

Heatwave in the euro area? How climate change is turning up the temperature on the ECB's one size fits all policy*

Hamza Bennani[†]

University of Nantes

Etienne Farvaque

University of Lille

July 22, 2024

Abstract

Climate change, through temperature anomalies, is likely to have an asymmetric effect on prices and economic activity within the euro area. In this paper, we aim to measure the monetary stress for each member country resulting from these types of asymmetric shocks. For that purpose, we first measure how inflation and GDP per capita respond to temperature anomalies in several euro area countries. We then simulate the temperature-induced changes in inflation and GDP per capita over the period 2025-2100. The significant divergences in these temperature-induced variables call for different monetary policy needs within the currency union, hence the existence of a temperature-induced monetary stress that is likely to worsen over time. Our results provide evidence that climate change constitutes a challenge to the sustainability of the currency union and to the one-size-fits-all ECB's policy.

Keywords: temperature anomalies, currency union, monetary stress, euro area.

JEL classification: E02, E58, Q54.

*Thanks to David-Jan Jansen, Matthias Neuenkirch, Laura Pagenhardt, Peter Tillman, Jana Wittich, and seminar participants at the university of Krakow, the university of Auckland, the university of Canterbury, the Reserve Bank of New-Zealand, the ECB climate changer centre, the 2024 European Public Choice Society and the 40th International Symposium on Money, Banking and Finance for helpful comments on earlier versions of the article. All remaining errors are ours.

[†]Corresponding author: Nantes University, IAE Erdre, Chemin la censive du tertre 44322 Nantes, France. email: hamza.bennani@univ-nantes.fr.

1 Introduction

Central banks have been placed, *nolens volens*, at the forefront of the fight against climate change. There have been calls to include this objective as one of their explicit goals, and arguments have been made for central banks to exclude some assets from their operations, to favor "greener" industries and activities (Liebich et al., 2023), and to act as leader, not follower, on the subject (Campiglio et al., 2018). The European Central Bank, among other central banks, has recently adopted a climate action plan following the conclusion of its review of monetary policy strategy published in 2021.

However, on a day-to-day basis, climate change also implies that central banks will face different types of demand and supply shocks with significant implications in terms of price stability and economic activity (Chen et al., 2021). For instance, on the supply side, events such as droughts will likely increase food price volatility while, on the demand side, hot weather may reduce households demand in the retail sector which may push prices down. The prevalence of supply shocks over demand shocks (or the opposite) is paramount for the conduct of monetary policy. Indeed, while central banks can manage demand-side shocks given that there is no trade-off between stabilizing prices and output (Mankiw et al., 2005), they tend to struggle when confronted with supply-side shocks. In monetary unions, the challenges faced by central banks will be even harder to tackle, as shocks induced by climate change may not strike the whole area similarly, creating both upward and/or downward pressures on prices within the currency union.¹ In this context, the central bank is likely to face asymmetric responses to temperature anomalies, defined as deviations with regard to the historical averages. This raises a crucial issue since a single monetary policy is, by definition, not designed for spatially differentiated shocks.² Climate change will, however, give a new twist to the issue, as its macroeconomic consequences will not be spread out homogeneously within the monetary union, making it harder for a common central bank to address its asymmetric effects.

¹Extreme temperatures are found to be either inflationary (Kim et al., 2021; Makkonen et al., 2021) or deflationary (Faccia et al., 2021).

²With the exception of the recently introduced "full allotment policy", which allows the ECB some flexibility to provide more/less liquidity to individual countries.

In this article, we consider this issue in the context of the euro area, and we analyze the consequences of climate change on the cost and standard of living for its member countries. We highlight the monetary stress stemming from the physical risks related to climate change (and thus do not deal with the transition risk, which raises different issues for heterogeneous countries). More precisely, we consider the case of temperature anomalies that climate change will engender, and how they will affect the macroeconomic situation of the euro area member countries. Temperature anomalies allow us to take the case of one of the consequences of climate change that may be considered as the closest to a uniform change, compared to natural disasters for example. As a consequence, our results can be considered as a low-case benchmark. Nevertheless, as we expose, even this low-case reference is likely to increase significantly the stress of living in a monetary union, that is, the divergence between the required monetary policy rate for a member country to achieve its price stability objective and the policy rate required for other countries. In other words, as much as temperature anomalies have different effects on inflation and growth for euro area member countries, they modify the benefits of the trade-off when deciding to be part of a currency union.

To measure the temperature-induced monetary stress in the euro area, we first assess how the European central bank's (ECB) macroeconomic objectives, price stability and economic growth, are affected by temperature anomalies in euro area countries using the method of local projections. Second, we use the coefficients estimated in the first step along with climate projections obtained from the sixth Intergovernmental Panel on Climate Change (IPCC) latest report to compute the temperature-induced changes in inflation and GDP per capita for the period 2025-2100 for euro area member countries. The climate-economy relationship that we assess in the first step is crucial to projections of variables from anticipated climate change over the next 100 years. However, the identification of effects from temperature anomalies requires strong assumptions about adaptation and mitigation as well as the persistence of temperature responses of macroeconomic variables.³ Third, we estimate how these temperature-induced vari-

³This is explained by the fact that, in the case of climate change, the past cannot be a relevant guide

ables will modify the required monetary policy for each euro area member country in the future. Finally, we analyze the gap between the average monetary policy required by euro area countries and the country-specific required monetary policy, that is, the temperature-induced monetary stress. Our findings reveal that there are significant differences between euro area countries in the way macroeconomic variables respond to temperature anomalies, hence the significant divergences in the temperature-induced changes in inflation and GDP per capita over the period 2025-2100 within the currency union. This might be explained by the different size and composition of the economies composing the euro area, as well as the resilience of institutions and physical infrastructure. As a consequence, the magnitude of the required monetary policy changes to face these temperature-induced shocks differs among euro area countries. These discrepancies in the temperature-induced counterfactual rates give rise to a monetary stress that worsens over time, in particular when the climate scenario is the most pessimistic. Overall, the existence of a (growing) temperature-induced monetary stress within the euro area represents a challenge for the sustainability of the currency union and the *one size fits all* ECB's policy. Specifically, the differences in the required monetary policy among euro area countries make it difficult for the central bank to achieve its mandate of price stability, which will exacerbate welfare disparities within the euro area and, ultimately, fuel anti-EU sentiment

The following section exposes the related literature. Section 3 analyzes the impact of temperature anomalies on the macroeconomic objectives of the ECB, inflation and economic growth. Section 4 measures the monetary stress of living in a monetary union under temperature-induced changes in inflation and GDP per capita over the period 2025-2100. We further analyze several extensions to our main scenario in Section 5. The final section concludes the analysis.

for the future since the climate-economy relationships might change over time. Yet, in this paper, we only consider risks stemming from the physical side of climate change and we do not deal with the, arguably more important, transition risk - as euro area countries tend to have very different energy mixes. Again, this means that our results tend to underestimate the importance the issue we highlight.

2 Literature review

This research stands at the crossroads of two strands of literature : the impact of temperature anomalies on macroeconomic variables and the monetary stress of living in a currency union.

The first literature deals with the impact of temperature anomalies on inflation and GDP growth. Interestingly, while studies looking at the impact of climate change on GDP date back to the 2000s, those investigating the nexus between climate change and inflation are more recent. As a case in point, [Faccia et al. \(2021\)](#) analyse the impact of country-specific summer temperature anomalies on inflation for 34 advanced economies and 15 emerging and developing economies over the period 1980-2018. They find evidence that extreme temperatures have long-lasting effects on inflation, in particular, for emerging market economics, when the shock occurs in the summer. Following this line of thought, [Mukherjee and Ouattara \(2021\)](#) assess the response of inflation to temperature shocks for a set of developed and developing countries over a relatively long period (1961-2014). Their findings suggest that temperature shocks lead to persistent inflationary pressures for developing countries. Using a sample of countries with different level of development and monetary regimes, [Kabundi et al. \(2022\)](#) find that the impact of temperature shocks on inflation depends on these factors. Specifically, inflation tends to decline in advanced economies following a temperature shock in the medium term, while in the short term, inflation is generally well anchored thanks to central banks' credibility. [Natoli \(2023\)](#) constructs temperature shocks from the 1970s up to the end of 2019 to explore their effects on the US economy. He finds that unfavorable temperature surprises have a significant negative effect on the consumer price index. ([Lucidi et al., 2024](#)) focus on the relation between temperature shocks, energy prices, and inflation in the euro area, showing that temperature changes reduce energy demand from European households, thus reducing inflation pressures.

These different results highlighted by the literature might be explained by the numerous channels through which temperature anomalies affect inflation. On the supply side,

the decline of agricultural productivity from droughts can lead to higher food prices, while the negative impact of heat on labor productivity, through increased mortality and morbidity for instance, can shrink the level of prices (Deryugina and Hsiang, 2014; Somanathan et al., 2021). On the demand side, higher temperature anomalies can discourage open air activities, which could reduce time allocated to outdoor leisure and shop retail sales and thus, put downward pressure on consumer price levels (Tran, 2022).

Regarding economic growth, Dell et al. (2012a) construct temperature and precipitation data for each country over the period 1950-2003 to analyze how changes in these climate variables affect economic growth. They find that only poor countries are negatively affected by higher temperatures. Burke et al. (2015) find increased temperature to have a negative effect on GDP growth but do not find differentiated impacts between rich and poor countries. Colacito et al. (2019) find that seasonal temperatures, particularly summer ones, have significant and systematic effects on the U.S. economy. Kahn et al. (2021) find evidence that a positive (or negative) climate shock has a long-term negative effect on per capita GDP growth, with marginal effects larger in low-income countries. De Bandt et al. (2021) evaluate the impact of temperature change on 126 low and middle income countries over the period 1960-2017. They find that a 1°C increase in temperature lowers annual growth in real GDP per capita by 0.74 to 1.52 percentage points. Berg et al. (2023) also find an impact of high temperatures on GDP. They show that the sign of the impact differs from one country to another, and in particular between developing countries (for which they find a positive impact) and the developed ones (for which a negative impact is found). The negative relationship between higher temperatures and economic output can be explained by several mechanisms. At the microeconomic level, temperature affects GDP through the heat stress channel that impacts physical and cognitive labor productivity. For example, Graff Zivin and Neidell (2014) show substantial reductions in labor supply on hot days in the industries with high exposure to weather, while Seppanen et al. (2006) document that performance at office tasks decreases at high temperature. At the macroeconomic level, channels such as damages to capital stocks, or changes in investment behavior explain the negative nexus between

the growth rate of GDP and temperatures anomalies (Fankhauser and Tol, 2005; Moore and Diaz, 2015; Acevedo et al., 2020). Finally, Carlsmith and Anderson (1979) and Burke and Leigh (2010) suggest that political and social instability that follow from higher temperature may impede economic growth through lower factor accumulation and productivity growth, respectively.

The second literature to which our research is related with is the one on the stress of living in a monetary union. This one is relatively scarce. The expression of monetary stress has been coined first by Clarida et al. (1998) and used since by several authors who have explored the issue. In this literature, researchers estimate Taylor rules for the euro area and calculate the (implicit) policy weights for the different member countries. As an illustration, Sturm and Wollmershäuser (2008) study the appropriateness of the single monetary policy by calculating the country-specific monetary stress for the euro area countries. They conclude that economic cycles in the euro area will only converge if the smaller member countries are given more weight than is proportional. Following this line of thought, Quint (2016) shows that monetary policy stress within the euro area, in particular between the peripheral countries (Greece, Ireland, and Spain) and the rest of the euro area members, has been decreasing prior to the recent financial crisis

3 The impact of temperature anomalies on macroeconomic variables

3.1 Methodology

We estimate the response of euro area macroeconomic variables, inflation and GDP per capita, to temperature anomalies. We follow the literature (Faccia et al., 2021; Kabundi et al., 2022; Natoli, 2023; Cevik and Jalles, 2023) and use local projections à la Jordà (2005) for the period 1996-2021. This approach is more flexible since it does not impose the dynamic restrictions embedded in vector autoregressions for instance. Finally, we use Newey and West (1994) standard errors to control for heteroskedasticity and serial correlation in the idiosyncratic error term, ϵ .

For inflation, we estimate the following specification:

$$\ln(P_{c,m+h}) - \ln(P_{c,m-1}) = \alpha + \beta_c^h Temp_anomaly_{c,m} + \sum_{n=1}^6 \gamma_n^h \delta \ln(P_{c,m-n}) + X_{c,m} + \epsilon_{c,m} \quad (1)$$

where $\ln(P_{c,m+h}) - \ln(P_{c,m-1})$ reflects the cumulative change in prices between horizons $m+h$ and $m-1$, which is defined as the difference in the natural logarithms of $P_{c,m}$.⁴ c is the country index, m stands for the time index with monthly frequency and the horizon h takes values between 0 and 24. We include 6 lags of the dependent variable to remove potential autocorrelation in the error term. $Temp_anomaly_{c,m}$ represents the temperature anomaly, which we define more precisely below. Finally, $X_{c,m}$ is a set of control variables including price expectations and unemployment expectations over the next 12 months and a dummy variable that takes the value 1 when in recession and 0 otherwise.

To estimate the response of GDP per capita to temperature anomalies, the following specification is estimated:

$$\ln(Y_{c,q+h}) - \ln(Y_{c,q-1}) = \alpha + \beta_c^h Temp_anomaly_{c,q} + \sum_{n=1}^2 \gamma_n^h \delta \ln(Y_{c,q-n}) + X_{c,m} + \epsilon_{c,q} \quad (2)$$

where $\ln(Y_{c,q+h}) - \ln(Y_{c,q-1})$ is the cumulative change in real GDP per capita between horizons $q+h$ and $q-1$. The right-hand variables are similar to eq. (1) except that the time index q is at a quarterly frequency. $X_{c,m}$ has the same definition as above. As a result, the horizon h takes values between 0 and 8 while we include 2 lags of the dependent variable in the model.

In both models, impulse response functions are defined by the sequence of the coefficients of interest, the β^h , that measure by how much prices and GDP per capita react following an increase in temperature anomaly by 1°C for every country c at every horizon h .

⁴The use of a log transformation makes the interpretation of the unit root in the level variables straightforward (Fomby et al., 2013).

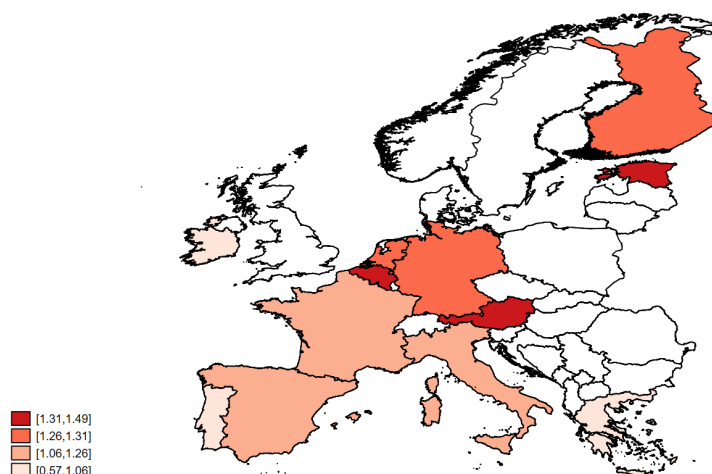
3.2 Data

To study the effect of climate shocks on economic variables, the literature usually uses the concept of temperature anomalies, comparing temperatures to the average ones known in a specific reference period. [Hansen and Lebedeff \(1987\)](#) suggest that temperature anomalies are more suited to measure the impact of climate change given the difficulty to measure absolute temperatures, due to the fact that they vary considerably over short distances. Following this line of thought, we retrieve temperature data at the country level from the [World Bank Climate Change Knowledge Portal](#). To measure temperature anomalies, we follow the Food and Agriculture Organization of the United Nations which considers the period 1950-1980 as reference. As a result, the temperature anomaly of country c in month m , $Temp_anomaly_{c,m}$, is measured as:

$$Temp_anomaly_{c,m} = Temp_{c,m} - \overline{Temp}_{c,m} \quad (3)$$

where $Temp_{c,m}$ is the monthly average temperature of country c in month m and $\overline{Temp}_{c,m}$ the average temperature of country c in month m during the reference period 1950-1980. [Figure 1](#) shows the average monthly temperature anomaly of euro area countries in the period 1996-2021. Northern and core European countries have had the highest monthly average temperature anomaly throughout that period, followed by Southern European countries. Hence, the maps reveals a large degree of heterogeneity among euro area countries which may create an issue for the definition of a single monetary policy, given the macroeconomic consequences that temperature anomalies have.

Figure 1: Average monthly temperature anomaly in euro area countries (1996-2021)



As a next step, since our objective is to measure the monetary stress induced by temperature anomalies in the euro area, we focus on the two variables of interest for the ECB, namely, inflation and output. Specifically, we use monthly data of the harmonized index of consumer prices (HICP) for our sample of 12 euro area countries in the period 1996-2021.⁵ The advantage of using the HICP is that they are based on harmonised statistical methods, which makes cross-country comparisons possible. For output, we follow the literature and we rely on the quarterly chained volume estimates of GDP per capita to measure the impact of temperature anomalies on economic activity (Dell et al., 2012b; Colacito et al., 2019; Newell et al., 2021; Kalkuhl and Wenz, 2020). Hence, to estimate eq. (2), we sum the monthly temperature anomalies to obtain a quarterly variable. Finally, price and unemployment expectations over the next 12 months are obtained from the business and consumer surveys conducted by the Directorate General for Economic and Financial Affairs of the European Commission. All data are taken from Eurostat. Table 1 in the Appendix provides the summary statistics of our variables of interest.

⁵Austria, Belgium, Estonia, Finland, France, Germany, Greece, Ireland, Italy, Netherlands, Portugal and Spain.

3.3 Results

Figures 2 and 3 show the responses of national inflation rates and GDP per capita, respectively, to an increase in the anomaly of the monthly mean temperature from its historical average by 1°C up to two years after the shock. Both estimates are carried out on the full sample, going from January 1996 to December 2021.

Regarding the impulse response functions (IRFs) of inflation, on the one hand, the most striking result is that the effect of temperature anomalies is not uniformly spatially distributed over the euro area countries. Countries from the South of Europe (Greece, Italy, Portugal and Spain) and the periphery (Estonia) are significantly and negatively affected by temperature anomalies. Specifically, after 24 months, the effect peaks to -0.2 percentage points (pp) for Estonia, -0.4 pp for Greece, -0.3 pp for Italy, Portugal and Spain. On the other hand, the response of inflation for countries from the core, such as Austria, Belgium, France, Germany and the Netherlands, is not significantly different from zero throughout the 24-month horizon. Interestingly, the positive trend of the IRF for Ireland might be explained by the fact that warming raises productivity in cooler countries (Burke et al., 2015).

The negative relationship between temperature anomalies and inflation observed for Southern European countries could be explained by at least three factors: (i) the reduction in the demand for heating during autumn and winter, (ii) the reduction in labor supply and productivity and (iii) the reduction in household demand in the retail and the real estate sectors (Starr, 2000; Ngai and Tenreyro, 2014). All these factors have been shown to induce downward pressures on prices (Auffhammer and Mansur, 2014; Dasgupta et al., 2021). Other factors, such as structural and demographic differences or fiscal and institutional capacity, may reflect the weaker capacity of Southern European countries to adapt to the consequences of temperature anomalies. Following this line of thought, we decompose the HICP into six categories following the European classification of individual consumption by purpose to highlight the transmission channels between temperature anomalies and inflation.⁶ The results suggest that prices related

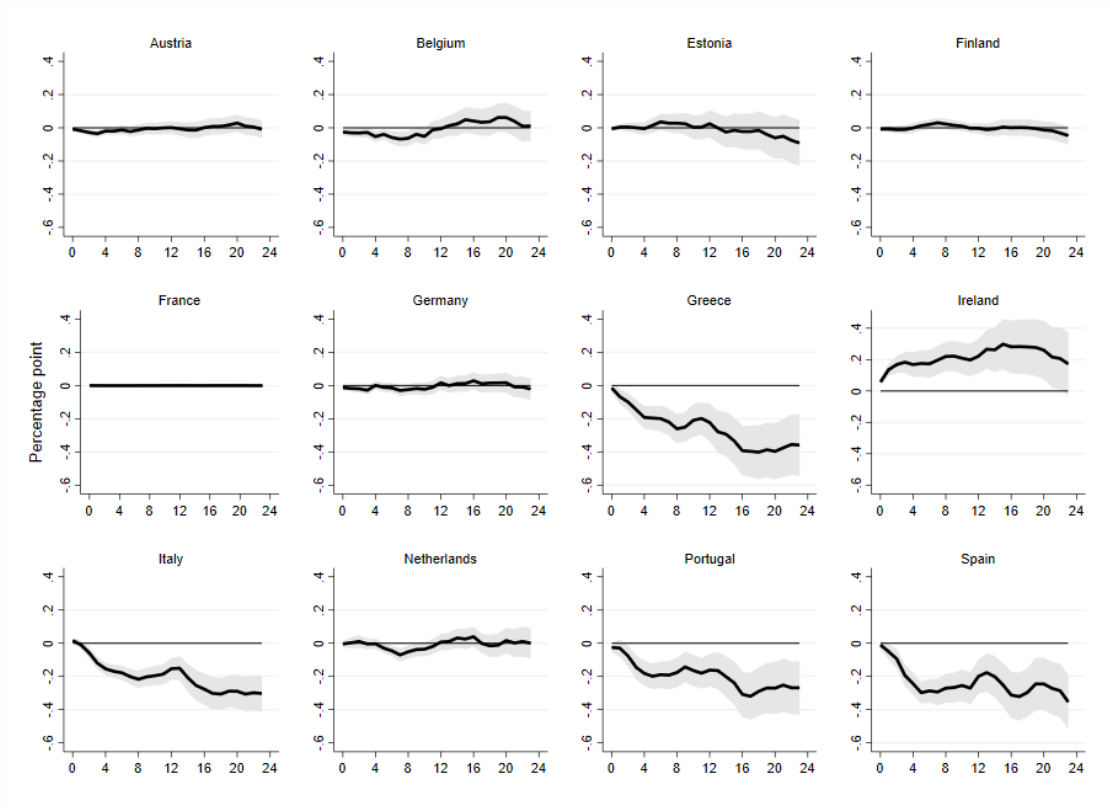
⁶The categories are (i) processed food including alcohol and tobacco, (ii) unprocessed food, (iii)

to energy, industrial goods and services are mainly driving the response of aggregate inflation to positive temperature anomalies, which confirms the transmission channels related to demand for heating, labor productivity and household demand.

These findings, of economically important size, are in line with studies that look at the effect of temperature anomalies on prices. For instance, using a panel covering 173 countries over the period 1970–2020, [Cevik and Jalles \(2023\)](#) find that following a temperature shock, headline inflation declines significantly until reaching its trough (3.5 pp) four years after the shock. [Natoli \(2023\)](#) finds that the consumer price index (CPI) in the United States decreases after a temperature shock. [Faccia et al. \(2021\)](#) show that for 48 advanced and emerging market economies, headline CPI falls following positive temperature anomalies during spring, while anomalies happening in summer have more persistent effect. Finally, [Kabundi et al. \(2022\)](#) find falling response of inflation to temperature shocks in advanced economies, in particular in the second year since the shock.

industrial goods, (iv) non-energy industrial goods, (v) energy and (vi) services.

Figure 2: Effect of temperature anomaly on inflation rate (1996m1, 2021m12)

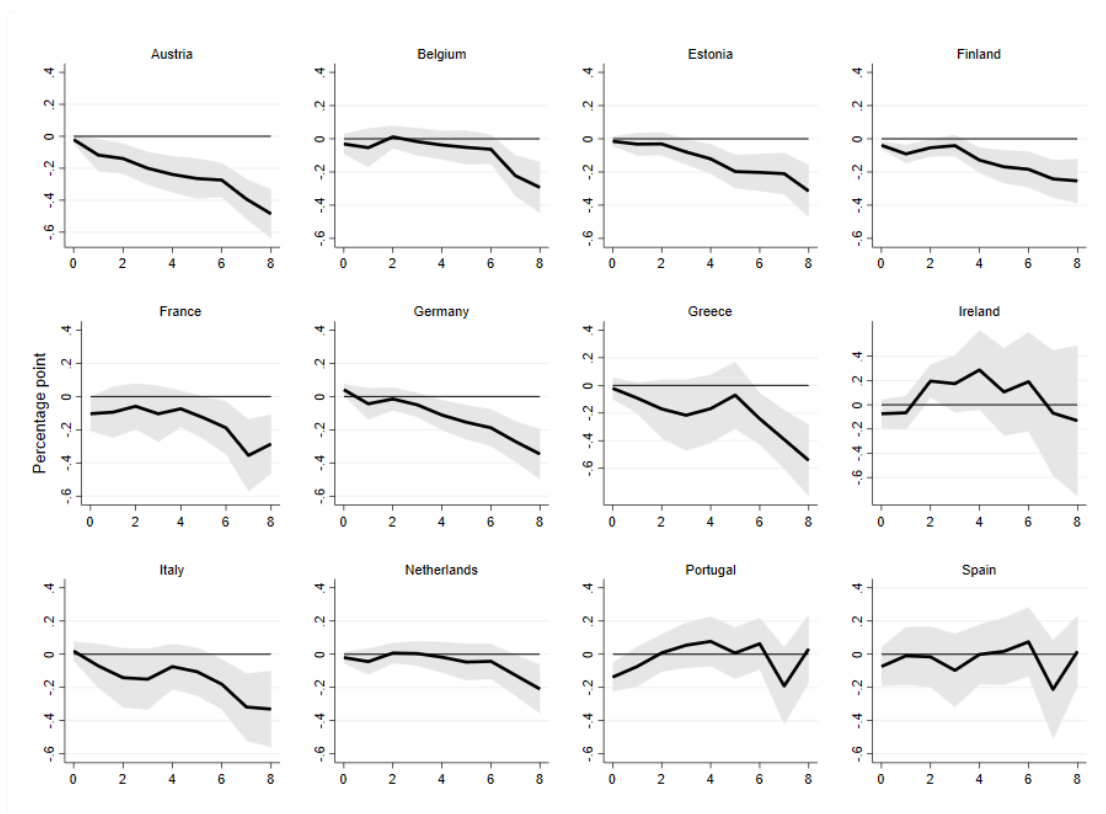


Note: The figures present impulse responses of national inflation rates to 1°C temperature anomaly. Time (horizontal axis) is in months. Gray-shaded areas indicate 68% confidence bands.

Figure 3 shows that temperature anomalies negatively and significantly affects GDP per capita in several European countries. The growth deceleration reaches a through 24-months after the shock, at which point real GDP per capita is lower in Austria (-0.5 pp), Belgium (-0.2 pp), Estonia (-0.4 pp), Finland (-0.2 pp), Germany (-0.4 pp), Greece (-0.5 pp) and Italy (-0.3 pp) than if the temperature anomaly had not happened. Again, these effects are economically important. To highlight the channel through which temperature anomalies affect economic activity, we replace GDP per capita in Eq. (2) with the index of industrial production. The IRFs indicate that industrial production decreases significantly two years after a positive temperature anomaly, in particular in Austria (-1 pp), Estonia (-0.8 pp), Germany (-1.1 pp) and Italy (-1 pp). This suggests

that the negative relationship observed between temperature anomalies and economic activity can be explained by the drop in labor productivity in the industrial sector. These findings are in accordance with the literature that looks at the temperature-GDP relationship. An illustration, multiple studies find that a temperature shock is associated with a lasting reduction in the growth rate of GDP per capita (Dell et al., 2012a; Acevedo et al., 2020; Casey et al., 2023b). Specifically, Berg et al. (2023) find negative GDP responses to temperature shocks for rich countries in the medium and long horizons. For the United States, Natoli (2023) shows that real GDP significantly declines in response to a positive temperature surprise, with the effect reaching a trough between 1 and 2 years after the shock.

Figure 3: Effect of temperature anomaly on GDP per capita (1996m1, 2021m12)



Note: Note: The figures present impulse responses of national GDP per capita to 1°C temperature anomaly. Time (horizontal axis) is in quarters. Gray-shaded areas indicate 68% confidence bands.

4 The temperature-induced monetary stress

4.1 Expected climate warming and macroeconomic variables

We project the impact of expected warming on inflation and GDP per capita by 2100, using the coefficient estimates of the cumulative temperature-anomaly effects obtained from models (1) and (2) and the projected temperatures published by the IPCC in its sixth assessment report.

We use the temperature projections modeled in the Shared Socioeconomic Pathways (SSP) using the latest climate modelling – the sixth Coupled Model Intercomparison Project (CMIP6) – to measure projected temperature anomalies. Projected temperature anomalies are estimated by assuming a linear increase from the historical average to country-specific median temperature projections to 2100 obtained from five SSP. These five SSP are based on narratives that the world could take in terms of population, economic growth, education, urbanisation and the rate of technological development: (i) a world of sustainability-focused growth and equality (SSP1); (ii) a middle of the road scenario (SSP2); (iii) a fragmented world of resurgent nationalism (SSP3); (iv) a world of ever-increasing inequality (SSP4); and (v) a world of rapid and unconstrained growth in economic output and energy use (SSP5).⁷ On the one hand, although SSP1 conveys optimistic trends for human development, SSP5 runs on the opposite side. However, while the latter assumes this will be driven by an energy-intensive economic framework, the former expects a shift toward sustainable practices. On the other hand, SSP3 and SSP4 are more pessimistic in their assessment of future economic and social developments. Finally, SSP2 represents a “middle of the road” scenario where trends broadly follow their historical patterns throughout the 21st century.

In line with the literature (Casey et al., 2023a; Dasgupta et al., 2021), we quantify the impact of future climate warming on inflation and GDP per capita by combining our estimated response function with the “middle of the road” scenario (SSP2). This approach, which assumes that future economies respond to temperature anomalies sim-

⁷For more details about the SSP narratives, see <https://www.carbonbrief.org/explainer-how-shared-socioeconomic-pathways-explore-future-climate-change/>.

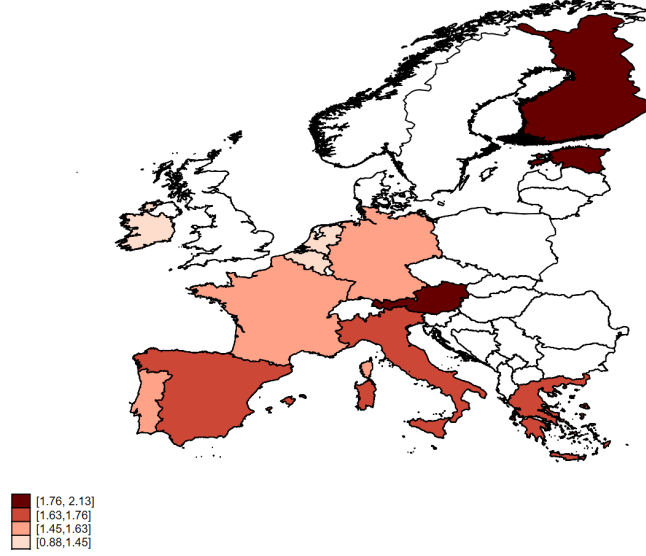
ilarly to today’s economies, should be taken with caution. Indeed, we consider that the impact coefficients estimated in our main analysis are stable over a future time period where there is no adaptation or mitigation. Moreover, we exclude from our analysis additional dimensions of rising temperatures that may also affect inflation and GDP per capita.⁸ Nevertheless, [Burke et al. \(2015\)](#) find that neither technological advances nor the accumulation of wealth and experience since 1960 has modified the relationship between productivity and temperature or induced notable adaptation to climate change. First, for each euro area country, we compute the projected temperature anomaly, $Temp_anomaly_{c,SSP2}^y$, as the anomaly of the projected annual temperature at year y for country c according to the SSP scenario 2, from its historical average (1995-2015):

$$Temp_anomaly_{c,y}^{SSP2} = Temp_{c,y}^{SSP2} - \overline{Temp}_{c,(1995-2015)} \quad (4)$$

where $Temp_{c,y}^{SSP2}$ is the temperature projection at year y using the SSP scenario 2 for country c , and $\overline{Temp}_{c,(1995-2015)}$ the historical annual average temperature for country c . [Figure 4](#) shows the projected average annual temperature anomaly between the two end points of our analysis, 2025 and 2100. The figure suggests that the countries that are most likely to experience the highest projected temperature anomaly according to the “middle of the road” scenario are Northern ones (Finland and Estonia) followed by Southern countries (Spain, Greece and Italy). Core European countries, in particular Belgium and the Netherlands, have the lowest projected temperature anomaly. Two things are worth noting here. First, the heterogeneity noted previously about the anomaly from the historical average is still present. However, and second, the countries that have known the largest historical anomalies are not necessarily the same who will suffer from large anomalies in the future.

⁸These dimensions are, for instance, sea level rise, natural disasters, and loss of biodiversity.

Figure 4: Projected average annual temperature anomaly (2015-2100)



Next, we combine projected temperature anomalies with the impact coefficients which depict the cumulative effect of temperature anomaly on our variables of interest two years after, and with the upper and lower 68% confidence band for each estimated response function.⁹ Hence, we compute the projected temperature-induced changes in yearly inflation and GDP per capita over the period 2025-2100 for each euro area country c at each year y using the SSP scenario 2 as follows:

$$\hat{\pi}_{c,y}^{SSP2} = \beta_c^{24} \times Temp_anomaly_{c,y}^{SSP2} \quad (5)$$

$$\hat{y}_{c,y}^{SSP2} = \beta_c^8 \times Temp_anomaly_{c,y}^{SSP2} \quad (6)$$

where $\hat{\pi}_{c,y}^{SSP2}$ and $\hat{y}_{c,y}^{SSP2}$ reflect the projected temperature-induced changes in inflation and GDP per capita over the period 2025-2100, respectively.

Figure 8 in the Appendix suggests that the magnitude of the effects of warming on inflation depends on the spatial location of countries. On the one hand, for Northern European countries (Austria, Belgium, France, Germany, Ireland, Netherlands), the projected temperature anomalies do not imply significant changes in inflation over time.

⁹Table 2 in the Appendix report the coefficients used for each euro area country.

On the other hand, Southern European countries experience a decrease in the level of prices over the next 100 years. Specifically, if climate projections are based on the “middle of the road” scenario, annual inflation is projected to decrease on average by 0.65 pp for Greece, 0.48 pp for Italy, 0.35 pp for Portugal and 0.40 pp for Spain.

Regarding the temperature-induced changes in GDP per capita, Figure 9 in the Appendix shows that the effect of projected warming is consistent among European countries, with only a few exceptions (Portugal and Spain). However, although there is a negative impact of projected warming on GDP per capita, its magnitude is different within euro area countries. Under the “middle of the road” scenario, the GDP per capita decrease goes from 0.84 pp (for Austria) to 0.12 pp (for Ireland).

4.2 A temperature-induced counterfactual policy rate

Since the objectives of the ECB is to maintain price stability and to ensure a balanced economic growth, we investigate the extent by which the policy rate should move in response to the persistent effect of temperature anomalies on inflation and GDP per capita. As a case in point, Natoli (2023) finds that the Fed reacts to temperature shocks by lowering policy rate.

We resort to a Taylor-type monetary rule which has been frequently used to measure ECB’s reaction function (Sauer and Sturm, 2007). Taylor (1993) suggests that the interest rate behavior could be described with the following rule:

$$i_t = \bar{\pi} + \phi(\pi_t - \bar{\pi}) + \gamma y_t + R \quad (7)$$

where i_t is the target level of the short-term nominal interest rate, π_t is the inflation rate and $\bar{\pi}$ the target level of inflation, hence, $\pi_t - \bar{\pi}$ can be described as the inflation gap. y_t is the output gap and R the equilibrium level of the real interest rate. With ϕ

and γ equal to 0.5 and R to 2 percent,¹⁰ the equation becomes:

$$\hat{i}_{c,y}^{SSP2} = 1.0 + 1.5\hat{\pi}_{c,y}^{SSP2} + 0.5\hat{y}_{c,y}^{SSP2} \quad (8)$$

where $\hat{\pi}_{c,y}^{SSP2}$ and $\hat{y}_{c,y}^{SSP2}$ reflect the projected temperature-induced changes in inflation and GDP per capita estimated in models (5) and (6), respectively. Given that the findings suggest a decrease in inflation and GDP per capita in response to projected temperature anomalies, this would imply significant downward move of the policy rate. However, asymmetries in the magnitude of the decline of inflation and GDP per capita observed in figures 8 and 9 will likely generate differences in the degree of policy rate fall among countries. In this context, eq. (8) allows to estimate the projected temperature-induced policy rate that should prevail for each euro area country during the period 2025-2100.

Figure 10 in the Appendix shows that most of the countries considered in our sample will need an accommodative monetary policy stance over the future, in particular Estonia, Greece and Italy. In contrast, other countries, such as Belgium or the Netherlands, do not require a significant change in the policy rate in response to the effect of projected temperature anomalies on inflation and GDP per capita. All in all, the large majority of countries in the sample (9 out of 12) will require a more accommodative monetary policy to face temperature anomalies in the future. However, the degree of monetary accommodation varies from one country to the other, which will make the monetary policy design task even more complex, as we will now measure.

4.3 A temperature-induced monetary policy stress

The divergent counterfactual policy rates observed in figure 10 imply that the single ECB monetary policy will not be appropriate for all member countries in the future. Hence, the “one-size fits all” policy will be even less relevant in the context of climate change. These divergences between the policy rates required by individual countries

¹⁰Even if the risks related to climate change may lower the equilibrium real interest rate, this doesn’t affect our empirical framework (Bylund and Jonsson, 2020).

in response to the projected temperature-induced changes in inflation and GDP per capita will fuel political pressure on the ECB, since its policy is usually evaluated from a national rather than a European perspective. Following the literature (Sturm and Wollmershäuser, 2008), we refer to these divergences as country-specific monetary stress. In this paper, we define the monetary policy stress for an individual country c as the difference between its temperature-induced counterfactual policy rate and the average of the counterfactual rates of the rest of the countries – excluding country c . We measure the monetary stress for each euro area country c over the projected year y , $MS_{c,y}^{SSP2}$, as:

$$MS_{c,y}^{SSP2} = \hat{i}_{c,y}^{SSP2} - \bar{i}_{-c,y}^{SSP2} \quad (9)$$

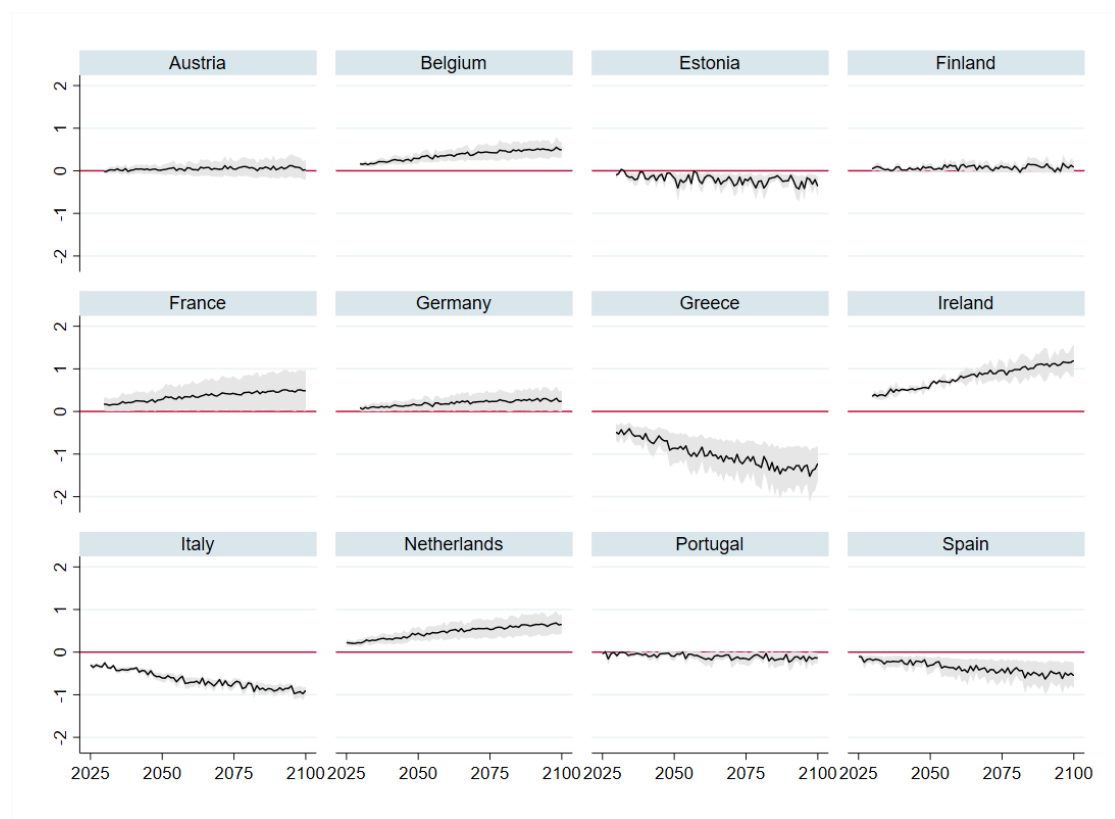
where $\hat{i}_{c,y}^{SSP2}$ is the counterfactual rate measured for country c at the projected year y and $\bar{i}_{-c,y}^{SSP2}$ the average of the counterfactual rates of euro area countries excluding country c . On the one hand, a positive value for $MS_{c,y}^{SSP2}$ implies that the required monetary policy for country c is more hawkish than what is required for the other countries. If, on the other hand, $MS_{c,y}^{SSP2}$ is negative, the required monetary policy for country c appears too accommodative for the other countries.

The results of the counterfactual exercises shown in Figure 5 are a reflection of the policy stress that euro area member countries are likely to face as a result of climate warming. The figure suggests a mixed picture in terms of monetary policy stress among euro area countries. While some countries from the South and the Periphery (Estonia, Greece, Italy) have a negative monetary stress, corresponding to a situation where they require a more accommodative monetary policy stance compared to the rest of the euro area, other countries have a positive monetary stress (Belgium, Ireland and the Netherlands), that is, they require a tighter monetary policy stance. Hence, by 2100, Estonia, Greece and Italy would require a policy rate lower by 100, 120 and 200 basis points, respectively, while Belgium, Ireland and the Netherlands would require a policy rate higher by 50, 90 and 65 basis points, respectively. Finally, only a few countries, most of them belonging to the core and the North (Austria, Finland, France, Germany, Portugal and Spain)

have a monetary policy stress that is not quantitatively different from 0.

These findings are in contradiction with the traditional view from the literature on currency unions, which considers that countries with similar shocks should form a union. Our analysis reveals that this view is questionable in front of one of the aspects that climate change brings with it, i.e., temperature anomalies. These shocks are interacted with the structure of the euro area economies, and it is this interaction that generates our measure of stress. In some part, our measure of stress may even suffer from an underestimation bias, which would make matters worse, in the sense that temperature anomalies would strongly reduce the welfare gains of the monetary union. Moreover, our results are quantitatively comparable to estimates of the cyclical stress measured by [Quint \(2016\)](#), revealing that the issue we underline cannot be discarded.

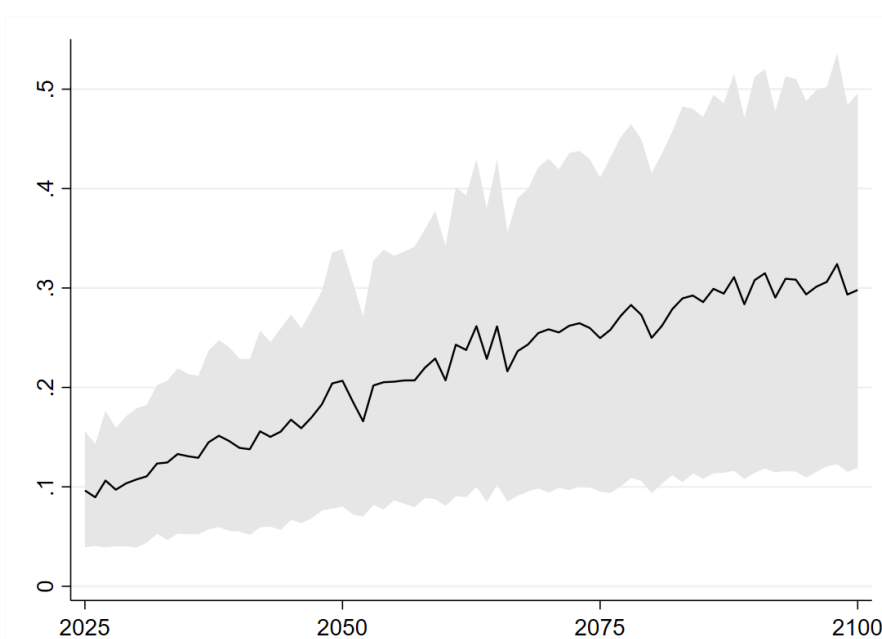
Figure 5: Monetary stress of euro area member countries (2025-2100)



Note: The bold line is the projected monetary stress obtained with the SSP2's scenario while the shaded area is the interval estimation of projected monetary stress obtained with the upper and lower 68% confidence bounds for each estimated response.

As a final step, we aggregate the country-specific stress indicators to the euro area level. For that purpose, we follow [Sturm and Wollmershäuser \(2008\)](#) and use a (i) GDP-weighting scheme and (ii) an absolute value to aggregate the individual stress measures. The aggregate stress measure is computed as $MS_{EA,y}^{SSP2} = \sum_c w_c |MS_{c,y}^{SSP2}|$, where w_c is the GDP-weight attributed to country c in the euro area. [Figure 6](#) shows that the aggregate stress measure is likely to worsen over time, with a magnitude comprised between 0.2 and 0.5 pp by 2100.

Figure 6: GDP-weighted aggregate monetary stress (2025-2100)



Note: The bold line is the projected GDP-weighted aggregate monetary stress obtained with the SSP2's scenario while the shaded area is the interval estimation of the projected GDP-weighted aggregate monetary stress obtained with the upper and lower 68% confidence bounds for each estimated response.

Overall, our results reveal that there are large differences in terms of monetary policy needs for euro area individual countries, and that these differences are likely to increase over time, as the [Figure 6](#) reveals. These heterogeneous monetary policy needs in response to climate warming will put an additional burden on the ECB's single monetary policy, and may constitute a challenge for the long-term sustainability of the euro area. Such results can only make more relevant the efforts made to mitigate the consequences

of climate change. Although they are often considered from a microeconomic point of view and, for what concerns central banks, from the financial stability side, our results show that they also have important macroeconomic side effects, making it more urgent to deal with climate change.

5 Extensions and Robustness

5.1 Alternative Shared Socioeconomic Pathways

The results shown in section 4 are based on the “middle of the road” scenario (SSP2) and are thus likely to be different if we consider alternative climate scenarios. This observation is even more relevant given the large differences in the projected changes in temperature across the scenarios shown in Figure 11 in the Appendix. The CMIP6 model projects that under the SSP1, SSP2 and SSP5 scenarios, average temperature in the long term would increase by 0.36°C, 1.82°C and 4.37°C, respectively. Specifically, for our sample of countries, under the “middle of the road” scenario, the strongest increase would be in Finland while the smallest one would happen in Ireland. Regarding the most optimistic (pessimistic) scenario, the SSP1 (SSP5), the maximum increase in temperature would also occur in Finland while the minimum one would be Belgium (Ireland).

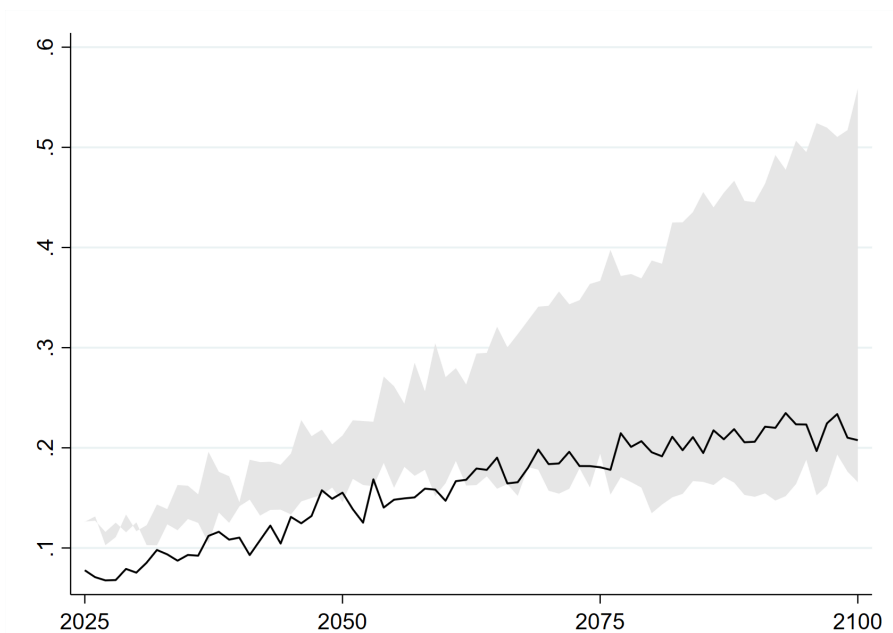
Against this background, we re-estimate eqs. (4)-(9) using the SSP1 and SSP5 scenarios to assess the interval of the temperature-induced changes in (i) inflation, (ii) GDP per capita, (iii) counterfactual policy rates and (iv) monetary stress among euro area countries.¹¹

The simulations of the temperature induced-changes in inflation and GDP per capita obtained with the alternative scenarios are in line with those obtained with the baseline one, although the magnitude of the reduction is different. Indeed, under the more aggressive (accommodating) emission scenario, the SSP5 (SSP1) scenario, the annual average reduction in inflation is expected to be 1.2 (0.65) pp for Greece and 0.8 (0.37)

¹¹To save some space, the figures are not displayed and are available upon request.

for Italy, 0.5 (0.19) for Portugal and 0.6 (0.27) for Spain. The same observations can be made for GDP per capita, for which the more dramatic scenario enlarges the range of reduction (from 1.28 to 0.22), while the most optimistic one reduces it (from 0.55 to 0.09). The interval of the decline of the counterfactual rate in most of the euro area countries is also consistent with the one obtained with the “middle of the road” scenario, but with a large range for South European countries such as Italy (from 0.22 to -0.61) or Greece (from -0.36 to -1.58), and a small one for Core European countries such as France (from 0.78 to 0.51) and Germany (from 0.76 to 0.45). Interestingly, when computing the temperature-induced monetary stress for individual countries, we observe that the degree of stress calculated with the SSP2 scenario is below those computed with the alternative scenarios. This confirms that the middle of the road scenario is the low-case one. This is confirmed by Figure 7, which shows the aggregate stress measures obtained with the three scenarios. For most of our sample period, the aggregate stress obtained with the SSP2 is lower than the interval of the stress obtained with the SSP1 and SSP5 scenarios.

Figure 7: GDP-weighted aggregate monetary stress (2025-2100)



Note: The bold line is the projected GDP-weighted aggregate monetary stress obtained with the SSP2 scenario while the shaded area is the interval estimation of the projected GDP-weighted aggregate monetary stress obtained with the SSP1 and SSP5 scenarios.

5.2 Controlling for precipitation anomalies and natural disasters

Beyond the impact of temperature anomalies on macroeconomics variables, the literature has also found that precipitation anomalies and natural disasters affect inflation and economic growth (Cantelmo (2022a); Kotz et al. (2023)), mainly because floods and/or droughts imply agricultural losses and destroy infrastructure. Following this line of thought, Kabundi et al. (2022) find droughts to be inflationary in advanced economies, Dell et al. (2012b) show evidence that changes in precipitation have small and negative effect on economic growth in rich and poor countries, Cantelmo (2022b)'s results suggest that natural disasters lower inflation since they behave as a negative demand shock.

We test the robustness of our findings by including precipitation anomalies and natural disasters of euro area countries in eqs. (1) and (2). We measure precipitation anomalies the same way as temperature anomalies, that is, by taking the difference of precipitations between a specific month comprised in the period 1996-2021 and the average precipitation

in the same month over the period 1950-1980. For natural disasters, we consider the EM-DAT dataset obtained from the Centre for Research on the Epidemiology of Disasters which defined natural disasters as “events which overwhelm local capacity, necessitating a request for external assistance at the national or international level”.

The IRFs show that even when controlling with precipitation anomalies and natural disasters, the impact of a 1°C temperature anomaly on inflation and GDP per capita is similar, in terms of magnitude and significance, to the baseline ones.¹² These results show that the effect of temperature anomalies on the macroeconomic variables is robust beyond the precipitation anomalies and the natural disasters that might occur at the same time.

5.3 Adaptation to temperature anomalies

There might be a gradual adaptation process of the economic system to higher temperatures. For instance, [Mendelsohn and Nordhaus \(1996\)](#) suggest that it is possible for agriculture to adapt to changes in climate by planting different crops. Therefore, we construct a new measure of temperature anomaly defined as the temperature deviation of a specific month from the monthly average temperature starting in 1980 and ending one year before, instead of the 1951-1980 average. For instance, temperature anomaly of January 1998 is measured as the difference between the temperature deviation of this month from the average temperature of January from 1980 until 1997. This procedure allows to consider possible adaptation to increasing warm temperatures recently.

We replace the temperature anomaly measured with eq. (3) with the new one and re-estimate models (1) and (2) accordingly. The IRFs depicting the impact of a 1°C temperature anomaly on inflation and GDP per capita are in line, in terms of magnitude and significance, with those of the baseline model. This shows that the potential adaptation process does not alter the impact of temperature anomaly on macroeconomic variables.

¹²To save some space, the IRFs are not shown and available upon request.

6 Conclusion

In this paper, we provide evidence of the existence of a temperature-induced monetary stress in the euro area. This stress appears as a result of the asymmetric effects of temperature anomalies on inflation and GDP per capita within the currency union. Those asymmetries imply that the monetary policy that individual countries need to achieve price stability will diverge over time, hence the presence of a temperature-induced monetary stress. Interestingly, we show that the degree of stress changes depending on the climate scenario and that it worsens when the climate scenario is more pessimistic. Given that global warming has become a present-day issue, and no longer a perspective, the issue we raise is an important one: higher temperatures will hit the euro area more and more, with the heterogeneous consequences we have underlined. The challenge this creates for monetary policy is thus a real one, potentially common to all monetary unions, and not only for the euro area. The “full allotment policy” that gives some degree of freedom to the ECB to face heterogeneous shock may thus become a conventional instrument, and other central banks may heed lessons from the Euro case.

References

- Acevedo, S., Mrkaic, M., Novta, N., Pugacheva, E., Topalova, P., 2020. The effects of weather shocks on economic activity: what are the channels of impact? *Journal of Macroeconomics* 65, 103207.
- Auffhammer, M., Mansur, E.T., 2014. Measuring climatic impacts on energy consumption: A review of the empirical literature. *Energy Economics* 46, 522–530.
- Berg, K.A., Curtis, C.C., Mark, N., 2023. GDP and Temperature: Evidence on Cross-Country Response Heterogeneity. Working Paper 31327. National Bureau of Economic Research.
- Burke, M., Hsiang, S.M., Miguel, E., 2015. Global non-linear effect of temperature on economic production. *Nature* 527, 235–239.

- Burke, P.J., Leigh, A., 2010. Do output contractions trigger democratic change? *American Economic Journal: Macroeconomics* 2, 124–157.
- Bylund, E., Jonsson, M., 2020. How does climate change affect the long-run real interest rate. *Economic Commentaries* 11, 90–108.
- Campiglio, E., Dafermos, Y., Monnin, P., Ryan-Collins, J., Schotten, G., Tanaka, M., 2018. Climate change challenges for central banks and financial regulations. *Nature Climate Change* 8, 462–464.
- Cantelmo, A., 2022a. Rare disasters, the natural interest rate and monetary policy. *Oxford Bulletin of Economics and Statistics* 84, 473–496.
- Cantelmo, A., 2022b. Rare disasters, the natural interest rate and monetary policy. *Oxford Bulletin of Economics and Statistics* 84, 473–496.
- Carlsmith, J.M., Anderson, C.A., 1979. Ambient temperature and the occurrence of collective violence: a new analysis. *Journal of personality and social psychology* 37, 337.
- Casey, G., Fried, S., Goode, E., 2023a. How long do rising temperatures affect economic growth? *FRBSF Economic Letter* 2023, 1–6.
- Casey, G., Fried, S., Goode, E., 2023b. Projecting the impact of rising temperatures: The role of macroeconomic dynamics. *IMF Economic Review* , 1–31.
- Cevik, M.S., Jalles, J.T., 2023. Eye of the Storm: The Impact of Climate Shocks on Inflation and Growth. *International Monetary Fund*.
- Chen, C., Pan, D., Huang, Z., Bleischwitz, R., 2021. Engaging central banks in climate change? the mix of monetary and climate policy. *Energy Economics* 103, 105531.
- Clarida, R., Gali, J., Gertler, M., 1998. Monetary policy rules in practice: Some international evidence. *European economic review* 42, 1033–1067.

- Colacito, R., Hoffmann, B., Phan, T., 2019. Temperature and growth: A panel analysis of the united states. *Journal of Money, Credit and Banking* 51, 313–368.
- Dasgupta, S., van Maanen, N., Gosling, S.N., Piontek, F., Otto, C., Schleussner, C.F., 2021. Effects of climate change on combined labour productivity and supply: an empirical, multi-model study. *The Lancet Planetary Health* 5, e455–e465.
- De Bandt, O., Jacolin, L., Thibault, L., 2021. Climate change in developing countries: global warming effects, transmission channels and adaptation policies .
- Dell, M., Jones, B.F., Olken, B.A., 2012a. Temperature shocks and economic growth: Evidence from the last half century. *American Economic Journal: Macroeconomics* 4, 66–95.
- Dell, M., Jones, B.F., Olken, B.A., 2012b. Temperature shocks and economic growth: Evidence from the last half century. *American Economic Journal: Macroeconomics* 4, 66–95.
- Deryugina, T., Hsiang, S.M., 2014. Does the environment still matter? Daily temperature and income in the United States. Technical Report. National Bureau of Economic Research.
- Faccia, D., Parker, M., Stracca, L., 2021. Feeling the heat: extreme temperatures and price stability. Working Paper Series 2626. European Central Bank.
- Fankhauser, S., Tol, R.S., 2005. On climate change and economic growth. *Resource and Energy Economics* 27, 1–17.
- Fomby, T., Ikeda, Y., Loayza, N.V., 2013. The growth aftermath of natural disasters. *Journal of applied econometrics* 28, 412–434.
- Graff Zivin, J., Neidell, M., 2014. Temperature and the allocation of time: Implications for climate change. *Journal of Labor Economics* 32, 1–26.

- Hansen, J., Lebedeff, S., 1987. Global trends of measured surface air temperature. *Journal of geophysical research: Atmospheres* 92, 13345–13372.
- Jordà, Ò., 2005. Estimation and inference of impulse responses by local projections. *American economic review* 95, 161–182.
- Kabundi, A., Mlachila, M., Yao, J., 2022. How persistent are climate-related price shocks? implications for monetary policy .
- Kahn, M.E., Mohaddes, K., Ng, R.N., Pesaran, M.H., Raissi, M., Yang, J.C., 2021. Long-term macroeconomic effects of climate change: A cross-country analysis. *Energy Economics* 104, 105624.
- Kalkuhl, M., Wenz, L., 2020. The impact of climate conditions on economic production. evidence from a global panel of regions. *Journal of Environmental Economics and Management* 103, 102360.
- Kim, H.S., Matthes, C., Phan, T., 2021. Extreme weather and the macroeconomy. Available at SSRN 3918533 .
- Kotz, M., Kuik, F., Lis, E., Nickel, C., 2023. The impact of global warming on inflation: averages, seasonality and extremes .
- Liebich, L., Nöh, L., Rutkowski, F., Schwarz, M., 2023. Unconventionally green: Monetary policy between engagement and conflicting goals. *Review of Economics* 74, 53–77.
- Lucidi, F.S., Pisa, M.M., Tancioni, M., 2024. The effects of temperature shocks on energy prices and inflation in the euro area. *European Economic Review* 166.
- Makkonen, A., Vallström, D., Uddin, G.S., Rahman, M.L., Haddad, M.F.C., 2021. The effect of temperature anomaly and macroeconomic fundamentals on agricultural commodity futures returns. *Energy Economics* 100, 105377.
- Mankiw, N.G., et al., 2005. Commentary: separating the business cycle from other economic fluctuations, in: *Proceedings-Economic Policy Symposium-Jackson Hole*, Federal Reserve Bank of Kansas City. pp. 187–192.

- Mendelsohn, R., Nordhaus, W., 1996. The impact of global warming on agriculture: Reply. *The American Economic Review* 86, 1312–1315.
- Moore, F.C., Diaz, D.B., 2015. Temperature impacts on economic growth warrant stringent mitigation policy. *Nature Climate Change* 5, 127–131.
- Mukherjee, K., Ouattara, B., 2021. Climate and monetary policy: do temperature shocks lead to inflationary pressures? *Climatic Change* 167, 32.
- Natoli, F., 2023. The macroeconomic effects of temperature surprise shocks. Bank of Italy *Temi di Discussione (Working Paper)* No 1407.
- Newell, R.G., Prest, B.C., Sexton, S.E., 2021. The gdp-temperature relationship: implications for climate change damages. *Journal of Environmental Economics and Management* 108, 102445.
- Newey, W.K., West, K.D., 1994. Automatic lag selection in covariance matrix estimation. *The Review of Economic Studies* 61, 631–653.
- Ngai, L.R., Tenreyro, S., 2014. Hot and cold seasons in the housing market. *American Economic Review* 104, 3991–4026.
- Quint, D., 2016. Is it really more dispersed? measuring and comparing the stress from the common monetary policy in the euro area. *International Economics and Economic Policy* 13, 593–621.
- Sauer, S., Sturm, J.E., 2007. Using taylor rules to understand european central bank monetary policy. *German Economic Review* 8, 375–398.
- Seppanen, O., Fisk, W.J., Lei, Q., 2006. Effect of temperature on task performance in office environment .
- Somanathan, E., Somanathan, R., Sudarshan, A., Tewari, M., 2021. The impact of temperature on productivity and labor supply: Evidence from indian manufacturing. *Journal of Political Economy* 129, 1797–1827.

Starr, M., 2000. The effects of weather on retail sales. Federal Reserve Board, Finance and Economics Discussion Series paper 2000-08 .

Sturm, J.E., Wollmershäuser, T., 2008. The stress of having a single monetary policy in europe .

Sturm, J.E., Wollmershäuser, T., 2008. The Stress of Having a Single Monetary Policy in Europe. KOF Working papers 08-190. KOF Swiss Economic Institute, ETH Zurich.

Taylor, J.B., 1993. Discretion versus policy rules in practice, in: Carnegie-Rochester conference series on public policy, Elsevier. pp. 195–214.

Tran, B., 2022. The impact of weather on retail sales. FRBSF Economic Letter 2022, 1–5.

Appendix

Table 1: Summary statistics

	Mean	Std. dev.	Min	Max
Germany				
HICP	0.126461	0.423501	-1.227020	1.356659
GDP per capita	0.309057	1.592359	-9.672119	8.539368
Temperature anomaly	1.284499	1.679170	-4.132187	5.827813
Precipitation anomaly	0.101220	21.686190	-54.666250	78.769690
Austria				
HICP	0.024748	2.260709	-39.128050	1.390839
GDP per capita	0.296922	1.861856	-12.231870	10.712220
Temperature anomaly	1.318159	1.655720	-3.661250	5.102812
Precipitation anomaly	3.241661	32.413380	-102.660600	96.295310
Belgium				
HICP	0.011303	2.812418	-47.050750	2.446167
GDP per capita	0.326605	1.787664	-12.101750	11.115110
Temperature anomaly	1.330062	1.561321	-3.833125	5.696875
Precipitation anomaly	1.775108	32.179720	-75.160310	99.691870
Spain				
HICP	0.012796	2.998084	-51.285400	2.381042
GDP per capita	0.281182	2.708262	-19.633420	15.390440
Temperature anomaly	1.146196	0.997020	-1.962500	3.500000
Precipitation anomaly	-2.276927	27.370290	-63.840310	108.235300
Estonia				
HICP	0.144475	3.468872	-60.166780	3.148224
GDP per capita	1.063276	2.082591	-12.554260	4.915771
Temperature anomaly	1.490302	2.190963	-5.308750	8.241250
Precipitation anomaly	4.713337	22.967050	-58.428440	61.001560
Finland				
HICP	-0.187060	5.658828	-99.645750	1.172516
GDP per capita	0.419912	1.450860	-7.183044	4.878906
Temperature anomaly	1.317258	2.221886	-4.997500	8.160625
Precipitation anomaly	4.499469	16.981960	-43.364380	47.790000
France				
HICP	-0.008669	2.384197	-41.585910	1.167877
GDP per capita	0.248480	2.273023	-14.089290	16.022890
Temperature anomaly	1.251871	1.345452	-3.248125	4.456250
Precipitation anomaly	-1.106198	26.712780	-63.429690	82.080940
Greece				
HICP	0.051066	2.627616	-41.545320	3.308563
GDP per capita	0.128369	2.264538	-14.432860	5.274170
Temperature anomaly	0.688572	1.225693	-3.768125	3.844687
Precipitation anomaly	-3.280126	30.360640	-103.445000	80.353440
Ireland				
HICP	-0.033541	3.165179	-55.219150	1.273010
GDP per capita	1.055818	3.327565	-5.769348	18.524960
Temperature anomaly	0.570184	0.944708	-3.554062	3.208125
Precipitation anomaly	6.903271	40.052590	-83.676880	166.898100
Italy				
HICP	0.006995	2.661163	-44.653050	2.471008
GDP per capita	0.084095	2.091149	-12.787110	13.271550
Temperature anomaly	1.154539	1.155080	-2.870000	3.715625
Precipitation anomaly	-2.835268	22.878910	-67.885310	106.188100
Netherlands				
HICP	0.016267	2.719922	-46.734040	1.608948
GDP per capita	0.372357	1.342679	-8.718018	6.181091
Temperature anomaly	1.268924	1.601832	-4.327188	6.062812
Precipitation anomaly	2.223001	27.979050	-68.455940	90.845000
Portugal				
HICP	-0.014441	3.024277	-52.215480	2.221558
GDP per capita	0.293284	2.369209	-16.392520	13.617250
Temperature anomaly	0.976378	0.960390	-1.791250	3.345938
Precipitation anomaly	-0.731156	53.603150	-112.838700	219.131900

Table 2: 2-year cumulative effect of temperature anomaly on inflation and GDP per capita

Country	Inflation	GDP per capita
Austria	0,0069743	-0,4695802
Belgium	-0,0002493	-0,2587495
Estonia	-0,1510064	-0,4326935
Finland	-0,0666084	-0,2465675
France	-0,0636513	-0,2011965
Germany	-0,0195247	-0,3843606
Greece	-0,3789182	-0,4510485
Ireland	0,0663101	-0,1377134
Italy	-0,2787566	-0,3133269
Netherlands	0,0096166	-0,1869576
Portugal	-0,2413174	0,1762825
Spain	-0,2386734	0,1618944

Figure 8: Temperature-induced changes in inflation for each euro area economy (2025-2100)



Notes: The bold line is the projected inflation rate obtained with the SSP2 scenario while the shaded area is the interval estimation of projected inflation rate obtained with the upper and lower 68% confidence bounds for each estimated response.

Figure 9: Temperature-induced changes in GDP per capita for each euro area economy (2025-2100)



Note: The bold line is the projected GDP per capita monetary stress obtained with the SSP2 scenario while the shaded area is the interval estimation of GDP per capita obtained with the upper and lower 68% confidence bounds for each estimated response.

Figure 10: Temperature-induced changes in policy rate for each euro area economy (2025-2100)



Notes: The bold line is the projected counterfactual policy rate obtained with the SSP2 scenario while the shaded area is the interval estimation of counterfactual rater obtained with the upper and lower 68% confidence bounds for each estimated response.

Figure 11: Projected changes in temperatures (2025-2100)

