



**HAL**  
open science

## Distribution and genomic variation of ammonia-oxidizing archaea in abyssal and hadal surface sediments

Blandine Trouche, Clemens Schauburger, Ferial Bouderkha, Jean-Christophe Auguet, Caroline Belser, Julie Poulain, Bo Thamdrup, Patrick Wincker, Sophie Arnaud-Haond, Ronnie Glud, et al.

### ► To cite this version:

Blandine Trouche, Clemens Schauburger, Ferial Bouderkha, Jean-Christophe Auguet, Caroline Belser, et al.. Distribution and genomic variation of ammonia-oxidizing archaea in abyssal and hadal surface sediments. *ISME Communications*, 2023, 3 (1), pp.133. 10.1038/s43705-023-00341-6 . hal-04388214

**HAL Id: hal-04388214**

**<https://hal.science/hal-04388214v1>**

Submitted on 19 Nov 2024

**HAL** is a multi-disciplinary open access archive for the deposit and dissemination of scientific research documents, whether they are published or not. The documents may come from teaching and research institutions in France or abroad, or from public or private research centers.

L'archive ouverte pluridisciplinaire **HAL**, est destinée au dépôt et à la diffusion de documents scientifiques de niveau recherche, publiés ou non, émanant des établissements d'enseignement et de recherche français ou étrangers, des laboratoires publics ou privés.



Distributed under a Creative Commons Attribution 4.0 International License

## ARTICLE OPEN



# Distribution and genomic variation of ammonia-oxidizing archaea in abyssal and hadal surface sediments

Blandine Trouche<sup>1,2</sup>, Clemens Schauburger<sup>2</sup>, Ferial Bouderkha<sup>1</sup>, Jean-Christophe Auguet<sup>3</sup>, Caroline Belser<sup>4</sup>, Julie Poulain<sup>4</sup>, Bo Thamdrup<sup>2</sup>, Patrick Wincker<sup>4</sup>, Sophie Arnaud-Haond<sup>3</sup>, Ronnie N. Glud<sup>2,5,6</sup> and Loïs Maignien<sup>1,7</sup>

© The Author(s) 2023

Ammonia-oxidizing archaea of the phylum Thaumarchaeota play a central role in the biogeochemical cycling of nitrogen in benthic sediments, at the interface between pelagic and subsurface ecosystems. However, our understanding of their niche separation and of the processes controlling their population structure in hadal and abyssal surface sediments is still limited. Here, we reconstructed 47 AOA metagenome-assembled genomes (MAGs) from surface sediments of the Atacama and Kermadec trench systems. They formed deep-sea-specific groups within the family *Nitrosopumilaceae* and were assigned to six *amoA* gene-based clades. MAGs from different clades had distinct distribution patterns along oxygen-ammonium counter gradients in surface sediments. At the species level, MAGs thus seemed to form different ecotypes and follow deterministic niche-based distributions. In contrast, intraspecific population structure, defined by patterns of Single Nucleotide Variants (SNV), seemed to reflect more complex contributions of both deterministic and stochastic processes. Firstly, the bathymetric range had a strong effect on population structure, with distinct populations in abyssal plains and hadal trenches. Then, hadal populations were clearly separated by trench system, suggesting a strong isolation-by-topography effect, whereas abyssal populations were rather controlled by sediment depth or geographic distances, depending on the clade considered. Interestingly, genetic variability between samples was lowest in sediment layers where the mean MAG coverage was highest, highlighting the importance of selective pressure linked with each AOA clade's ecological niche. Overall, our results show that deep-sea AOA genome distributions seem to follow both deterministic and stochastic processes, depending on the genomic variability scale considered.

ISME Communications; <https://doi.org/10.1038/s43705-023-00341-6>

## INTRODUCTION

Ammonia-oxidizing archaea (AOA) of the phylum Thaumarchaeota are widespread and abundant members of the ocean realm [1–3]. They are key contributors to the carbon and nitrogen cycles, as they are generally able to conserve energy from the aerobic oxidation of ammonia to nitrite, the first and limiting step in the nitrification process [4–6], a role first evidenced by the isolation of *Nitrosopumilus maritimus* SCM1 from the gravel (sediment) of a marine tropical fish tank [5]. Marine AOA belong to order Nitrosopumilales (NP), recently reclassified as family *Nitrosopumilaceae* in SILVA db v138.1 [7] and GTDB v207 [8, 9]. They form distinct clades, as delineated by *amoA* (ammonia monooxygenase subunit A) gene sequences [10], present in the water column and sediments [10, 11]. Hadopelagic waters of North Pacific trench systems are populated by clades *amoA*-NP-alpha and *amoA*-NP-gamma [12–15]. The *amoA*-NP-gamma clade, containing type strain *Nitrosopumilus maritimus* SCM1, seems to be widespread in oceans, irrespective of water depth, while *amoA*-NP-alpha populations appear most abundant in bathy- and abyssopelagic environments (1000–6000 m) [12, 15, 16]. By contrast, the

dominant clades reported in sediments of abyssal plains are *amoA*-NP-theta and *amoA*-NP-delta [16, 17]; however, data are scarce regarding AOA distribution in the deep sea, let alone in hadal sediments.

Studying benthic AOA along the abyssal-hadal depth gradient is of particular interest since these sediments are known to have very different microbial activity levels [18, 19], with generally higher activity in trenches due to increased accumulation of organic matter in the trenches by topographical funneling and mass-wasting events [20–22]. This results in different potential habitats for AOA due to variations in oxygen penetration depths between hadal sediments, where oxygen is depleted after a few centimeters [19, 23], and abyssal sediments, where it persists decimeters down [19, 24]. In addition to this difference in substrate influx and oxic zone thickness, hadal trenches are distinguishable from adjacent abyssal plains by the increased hydrostatic pressure, and their specific morphology that could contribute to biogeographic isolation.

Along this line, previous microbial diversity studies in Pacific trench systems have shown a remarkable similarity of

<sup>1</sup>Univ Brest, CNRS, Ifremer, UMR6197 Biologie et Ecologie des Ecosystèmes marins Profonds, F-29280 Plouzané, France. <sup>2</sup>Hadal & Nordsee, Department of Biology, University of Southern Denmark, Odense, Denmark. <sup>3</sup>MARBEC, Univ Montpellier, Ifremer, IRD, CNRS, Sète, France. <sup>4</sup>Génomique Métabolique, Genoscope, Institut François Jacob, CEA, CNRS, University of Evry, Université Paris-Saclay, 91057 Evry, France. <sup>5</sup>Department of Ocean and Environmental Sciences, Tokyo University of Marine Science and Technology, Tokyo, Japan. <sup>6</sup>Danish Institute for Advanced Study (DIAS), University of Southern Denmark, Campusvej 55, 5230 Odense, Denmark. <sup>7</sup>Marine Biological Laboratory, Josephine Bay Paul Center for Comparative Molecular Biology and Evolution, Woods Hole, MA, USA. ✉email: [blandine.trouche@orange.fr](mailto:blandine.trouche@orange.fr); [lois.maignien@univ-brest.fr](mailto:lois.maignien@univ-brest.fr)

Received: 31 March 2023 Revised: 20 November 2023 Accepted: 5 December 2023

Published online: 22 December 2023

hadobenthic communities along trench axes and between trench systems, but strong dissimilarity with their respective adjacent abyssal sites [25–27]. In the sediments of the Atacama and Kermadec trenches, sediment depth, in conjunction with redox stratification, remains the dominant structuring factor [27], in line with the strong stratification with sediment depth commonly reported for marine microbial communities [28–30], supporting the deterministic influence of environmental conditions in these systems.

Recently, reconstruction of metagenome-assembled genomes provided the opportunity to inspect finer-grained variations in genomic content in longitudinal or time series [31–34], a major step toward a better appraisal of the relative contribution of stochastic and deterministic processes on microbial population genomics. For example, while surface ocean cosmopolitan SAR11 populations were shown to be shaped by environmental selection [33], seafloor crustal fluid populations seem to be mainly structured by the stochastic forces of dispersal and drift [32]. Hwang and Girguis [34] leveraged similar tools to highlight different strategies of genetic diversification between ocean basins for the ubiquitous pelagic AOA lineage “*Candidatus Nitrosopelagicus brevis*”. However, population structure at the genomic level and the relative contribution of selection and drift have rarely been investigated in strongly stratified environments such as marine surface sediments, even less so at abyssal and hadal depths.

Previous studies have already demonstrated that different AOA clades adopt distinct ecological strategies, resulting in clear niche partitioning between different lineages, mostly in relation to the oxygen and ammonium concentration gradients and to pH [35–39]. AOA are thus ideal candidates to further investigate the relative contribution of additional environmental parameters such as geographic distance, water and sediment depth to their distribution, from lineage level to finer genomic variations. In this study, we characterized the diversity of AOA in abyssal and hadal sediments at the genome and at the population level to gain insights into the niche separation of these archaea and discuss the ecological and evolutionary processes likely at play. Building on a study of the general microbiome of the Atacama and Kermadec trenches in the South Pacific Ocean and their adjacent abyssal plains [27], we leveraged 56 metagenomes generated from the same samples to study the distribution of Thaumarchaeota clades in these sediments at higher taxonomic and genetic resolution.

## MATERIAL AND METHODS

### Sampling sites and slicing scheme

Samples were collected during two cruises in November 2017 and March 2018 as part of the HADES-ERC project. Two sites were sampled during the first cruise targeting the Kermadec trench, north of New Zealand, one in the trench axis using a multicorer (K6, 9555 m below sea level (mbsl)), and the other on the adjacent subducting plate using a boxcorer (K7, 6080 mbsl). The second set of samples originated from the Atacama trench, off the coast of Chile, with two trench axis sites (A10 and A3, 7770 and 7915 mbsl) and two sites located on the adjacent abyssal plain (A7, 5500 mbsl) or continental margin (A9, 4050 mbsl). All samples from the Atacama trench were collected using a multicorer. Triplicate cores were recovered for Atacama trench axis site A3 and the adjacent abyssal plain site A7. A map of the sampling sites is available in supplementary (Supplementary Fig. S1) and in Schauburger et al. [40] and Glud et al. [19].

The recovered sediment cores were sliced onboard immediately upon recovery into depth layers following a standard scheme (0–1, 1–3, 3–5, 5–10, 10–15, and 15–30 cm), as described in Trouche et al. [41]. In total, 60 samples were obtained from 10 cores. Details of the samples and sites can be found in Supplementary Table S1.

Sediment layers were classified as part of the oxic, nitrogenous, or ferruginous zones based on *in situ* oxygen profiles from the same locations [19], and the penetration depth of nitrate measured in parallel on board [42], as described in Schauburger et al. [27].

### DNA extraction, library construction and sequencing

DNA extractions were performed in a sterile shore lab, using approximately 10 g of sediment with the PowerMax Soil DNA Isolation Kit according to the manufacturer’s instructions (MO BIO Laboratories, Inc.; Qiagen, Hilden, Germany) with modifications: the elution buffer was left on the spin filter membrane for 10 min at room temperature before centrifugation in order to increase DNA yield. Each of the resulting 5-mL DNA solutions was stored at –80 °C.

Metagenomic libraries were prepared from 10 ng or less of DNA with the NEBNext Ultra II DNA Library prep kit (New England Biolabs, MA, USA). After quantification and quality control, library concentrations were normalized to 10 nM and applied to cluster generation according to the Illumina Cbot User Guide (Part #15006165). Sequencing of libraries was performed according to the Novaseq 6000 System User Guide Part #20023471 (Illumina, San Diego, CA, USA) in paired-end mode (2 × 150 bp). See Supplementary Material for the details of library preparation and sequencing carried out at Génoscope (Evry, France).

### Assembly and binning

The quality filtration of the demultiplexed metagenomic raw reads was carried out with Illumina-Utils python scripts [43] following recommendations by Minoche et al. [44]. Metagenomes were then split into ten co-assembly groups based on *de novo* comparison of the unassembled metagenomes using *k*-mer counts with Simka [45]. Composition of the co-assembly groups can be found in Supplementary Table S2. Most of the following steps were performed with the help of the Snakemake workflows [46] available with Anvi’o v7 [47, 48].

We co-assembled the samples using Megahit (v1.1 [49]) with preset meta-sensitive and minimum contig length of 1000 bp. Identification of Open Reading Frames (ORFs) in the contigs was run with Prodigal [50] and functional annotation obtained using Kofamscan [51], the COG (2020 release [52]) and arCOG databases [53].

After mapping of the short reads on the resulting contigs with bowtie2 [54, 55], automatic binning was performed with Concoct [56], restricting the number of bins to half the number of predicted bacterial genomes to prevent fragmentation errors. Archaeal bins were then inspected and successively refined manually twice using Anvi’o’s interactive interface [57]. Completeness and redundancy were estimated by Anvi’o based on the archaeal single-copy core gene collection [58].

Reconstructed Metagenome-Assembled Genomes (MAGs) were dereplicated based on pyANI with a minimum alignment fraction of 0.5, and a similarity threshold of 0.95. They were then once again run through the mapping steps of the workflow to obtain final coverage values. When detection (or breadth of coverage) was over 0.7, mean coverage values were used as a proxy for the relative abundance of the MAG; in other cases, it was set to 0. The lineage workflow from CheckM was applied to evaluate MAG quality (v1.1.3 [59]). We finally assigned MAG quality categories based on recommendations in the Genome Standards Consortium [60].

### External reference MAGs

To add context to our results, we included MAGs from other deep-sea studies to the phylogenetic and phylogenomic sections of our analysis. In particular, we retrieved 4 MAGs reconstructed by Zhong et al. [15] from the water column of the Mariana Trench (MTA1, MTA4, MTA5, MTA6), 9 MAGs reconstructed by Kerou et al. [17] from marine sediments at abyssal depths (NPMR\_NP\_delta\_1 to 3, NPMR\_NP\_theta\_1 to 5 and NPMR\_NP\_iota\_1) and 22 MAGs reconstructed by Zhou et al. [61] from sediments of Challenger’s Deep in the Mariana Trench and adjacent slope sites (Supplementary Table S3). They were run through the same steps as described above for gene calling and functional annotation.

### Phylogenetic placement of *amoA* genes

To identify the clades of ammonia-oxidizing archaea present in our metagenomes and MAGs, we extracted the sequences annotated as ammonia monooxygenase subunit A (*amoA*) by Kofam from our co-assemblies and from the external MAGs. We dereplicated them using CD-Hit [62] with 100% global sequence identity (100% overlap of the shorter sequence). We used a blastn search against the non-redundant NCBI nucleotide collection to confirm gene assignment and determine domain-level taxonomy [63]. We then aligned the sequences matching archaeal *amoA* genes using MAFFT with default parameters (v7.273 [64]) and placed them in the reference tree by Alves et al. [10] using EPA-ng [65]. We visualized this tree in R (v3.6.1) using packages ggtree and treeio [66, 67].

## Phylogenomic placement and taxonomic annotation of MAGs

Taxonomic assignment of the MAGs was performed using GTDB-tk v1.7.0 *classify\_wf* workflow [68] with the GTDB database (r202 [8, 69]). We used the concatenated alignment of 118 markers generated by the GTDB-tk *align* command, after masking of positions with over 0.5 gap frequency, to reconstruct a maximum likelihood tree in IQTREE (v2.0.3 [70, 71]) under the model WAG with 1000 ultrafast bootstrap replicates.

This method was used to generate a tree containing MAGs from this study, together with external reference MAGs and GTDB representative sequences for the Nitrososphaerales order (Nitrosopumilales in the accepted taxonomy). The tree was rooted by choosing genus *Pyrococcus* as an outgroup. We applied the same method to generate a tree of only MAGs from this study. We visualized these trees in R (v3.6.1) using packages *ggtree* and *treeio* [66, 67].

Clade identification was performed as described above based on *amoA* genes [10]. When the *amoA* gene was absent from the reconstructed genome, MAG cladistic classification was inferred from the phylogenomic tree.

## Single nucleotide and single amino acid variant analyses

During the mapping of the short reads on our MAG cluster representatives, we performed single nucleotide variants (SNVs) calling to investigate genomic variability using the *anvi\_profile* function from Anvi'o, with flags `--skip-SNV-profiling = false`, and `--profile-SCVs = true`. We then used command *anvi-gen-variability-profile* with engine NT (nucleotide) to compute tables listing all variable positions in samples where the MAG had a coverage over 10x. In addition, we required reported positions to have a coverage above 10x in every sample considered and a minimum departure from consensus of 0.1, departure from consensus being computed as the total number of reads not matching the consensus divided by the total number of mapped reads. Given these selection criteria, this analysis was done only for the four main clades for MAGs with coverage over 10x in at least 40 samples when possible or 20 samples for the abyssal clades. The MAG with coverage over 10x in the highest number of samples was chosen for illustration purposes for each of the main clades.

We used these nucleotide variability tables to estimate distances between metagenomes by computing the fixation index ( $F_{ST}$ ) according to Schloissnig et al. [72] with function *anvi-gen-fixation-index-matrix*, and determined a hierarchical clustering based on this index (*anvi-matrix-to-newick*). We then introduced the resulting tables and trees in R (v3.6.1) for the subsequent statistical analyses and visualization, which was done using packages *aplot*, *dplyr* [73], *ggplot2* [74], *ggtree* [66], *patchwork* [75], *tidyr* [76], *tidytree* [77], *treeio* [67] and *vegan* [78]. The fully reproducible workflow for this analysis is available at <https://loimai.github.io/abyssMG/>.

## RESULTS

### Reconstruction of AOA MAGs

The final dataset was composed of 56 metagenomic libraries with a mean of 159,868,532 raw reads (min 116,086,397, max 259,670,853). Sequencing failed for four libraries, corresponding to the deepest sediment layers of abyssal site A7's triplicate cores. On average, 96.6% of reads passed the quality filter and were input to the co-assembly (Supplementary Table S2).

We reconstructed a total of 47 *Nitrosopumilaceae* MAGs (taxonomy based on the Genome Taxonomy Database (GTDB), accepted taxonomy order Nitrosopumilales). Despite high sequencing depths, only two of these MAGs were of high quality, with completeness over 90% and redundancy under 5% (Supplementary Table S4). Eight other MAGs had completeness over 70% and redundancy under 7%. The remaining MAGs had lower completeness estimates, down to 28%, and redundancy below 10% with a mean of 3.48% except for two outliers (12.62% for A7D\_Bin\_00083 and 14.98% for A7D\_Bin\_00161) (Supplementary Table S4). The genome size of the ten MAGs over 70% complete varied between 0.91 and 1.3 Mbp, in accordance with previous reports of marine free-living Thaumarchaeota [79]. Mean GC content among MAGs was 33.4% (Supplementary Table S4).

Our co-assemblies contained *amoA* genes belonging to 7 *amoA*-NP clades, namely *amoA*-NP- gamma-2.1, -gamma.2.2,

-gamma-3, -alpha, -delta, -theta and -iota (Supplementary Fig. S2). Among our reconstructed MAGs, 10 contained *amoA* genes that were affiliated with six of these clades, excepting *amoA*-NP-gamma-3 (Supplementary Fig. S2). Eighteen MAGs were placed in genus *Nitrosopumilus* (*amoA*-NP-gamma-2.1) but were not closely related to the cultivated or enriched strains (Fig. 1). The two *amoA*-NP-gamma-2.2 MAGs (HAS\_Bin\_00039 and HKT\_Bin\_00022) also clustered apart from the representative *Nitrosarchaeum* genomes belonging to the same clade (Fig. 1). Ten MAGs from our study clustered together with the *amoA*-NP-delta MAGs reconstructed by Kerou et al. [17], two MAGs from Zhou et al. [61] and two GTDB representative genomes of genus *CSP1-1*. Fourteen MAGs formed a cluster with one GTDB representative genome of a genus named *DRGT01* and all Kerou et al. [17] *amoA*-NP-theta MAGs. Finally, three additional MAGs were sole representatives of their clades, with one *amoA*-NP-alpha MAG (A7D\_Bin\_00024), one *amoA*-NP-iota (A7D\_Bin\_00075) clustering with the MAG of the same clade reconstructed by Kerou et al. [17], and one unassigned MAG (A7S\_Bin\_00056).

### Distribution of the AOA MAGs

During the final mapping step of the workflow, between 0.36 and 5.27% of reads mapped to the AOA MAGs across samples (average 2.19%). We observed the presence of AOA in oxic horizons of all sites, with members of the *amoA*-NP-theta, -delta and -gamma-2.1 and 2.2 clades dominating the samples (Fig. 2). *amoA*-NP-gamma-2.1 MAGs were detected in the oxic surface sediments of all sites, generally decreasing in coverage with increasing sediment depth. *amoA*-NP-gamma-2.2 MAGs followed a similar trend, except that they had low or no coverage at both hadal and abyssal Kermadec sites K6 and K7, and at abyssal site A7 for HKT\_Bin\_00022. At both hadal sites A3 and A10, they were detected at relatively high coverage throughout the sediment column except between 5 and 10 cm, but including surrounding nitrogenous and ferruginous layers.

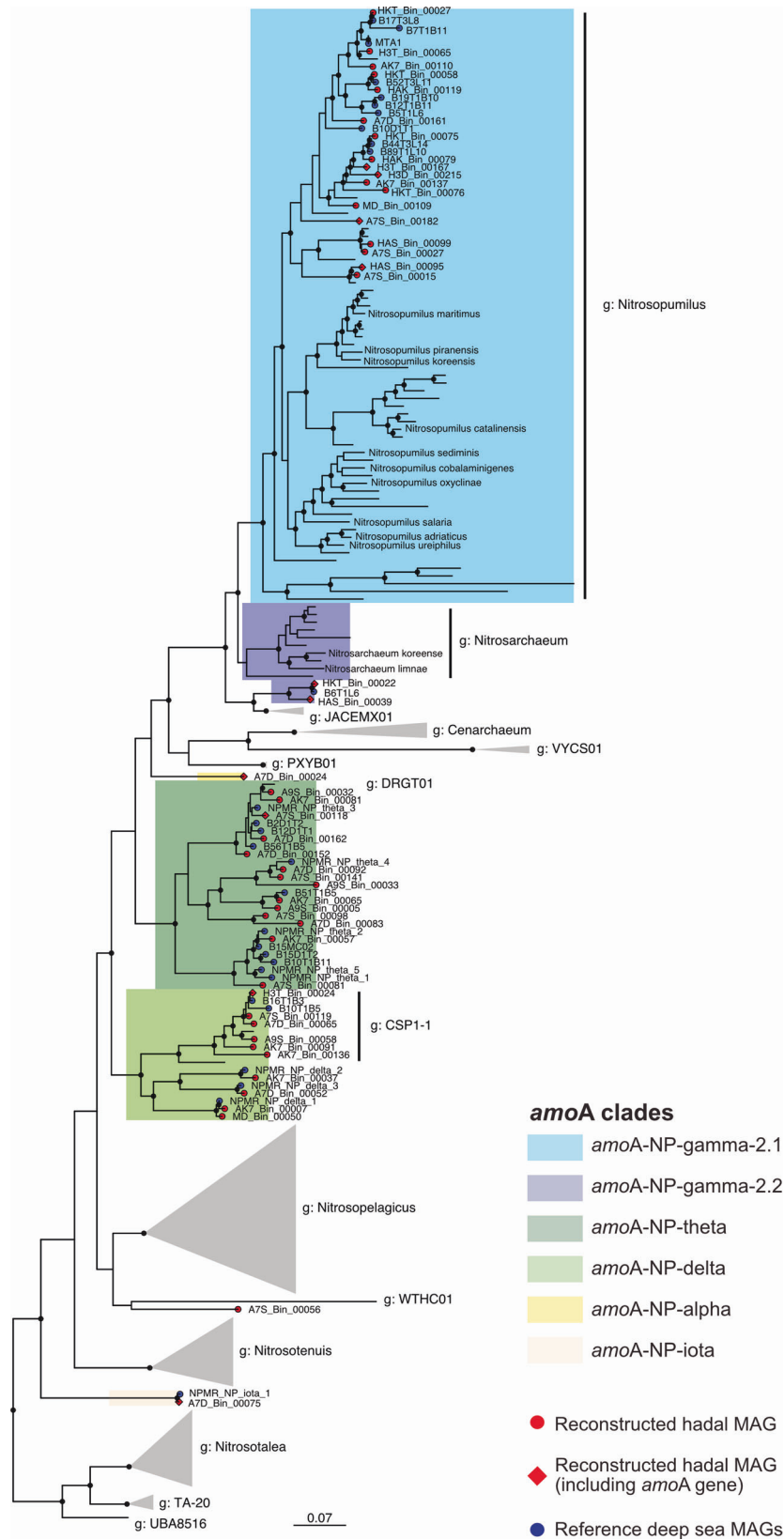
*amoA*-NP-delta and *amoA*-NP-theta were nearly exclusively abyssal clades. *amoA*-NP-delta MAGs were most present in upper to mid horizons of all abyssal sites, but some MAGs also recruited reads in the deeper sediment layers of site A10. *amoA*-NP-theta were only found at open ocean abyssal sites, increasing in coverage with sediment depth, though some populations were fairly rare and others dominated the deep horizons of sites A7 and K7, possibly highlighting distinct clusters. Finally, single representatives of clades *amoA*-NP-alpha and *amoA*-NP-iota were restricted to very specific sediment layers of abyssal site A7: surface and deeper layers, respectively.

### Population-level biogeography of AOA clades

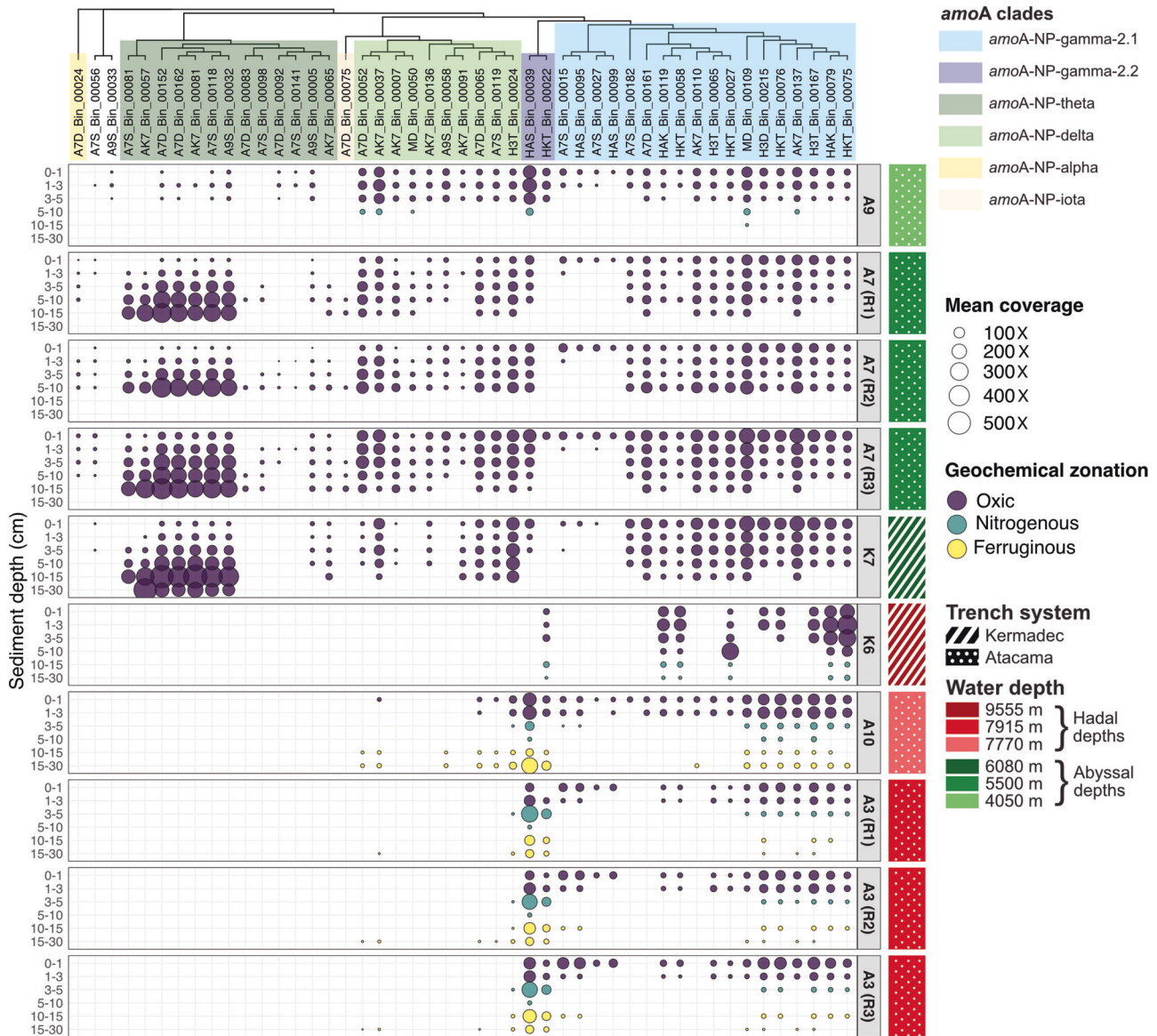
We then compared MAG population structure based on SNV patterns by computing  $F_{ST}$  indices as a measure of individual MAG genetic dissimilarity between samples. In general, sample clustering patterns were conserved within each clade and only results for single-clade representatives are shown (Fig. 3, see Supplementary Figs. S3–S6 for results based on other MAGs).

Variability profile comparisons of clade *amoA*-NP-gamma-2.1 led to a first-order separation of samples according to ocean realm (abyssal vs hadal, PERMANOVA test  $p = 0.02$ ) (Fig. 3A). In the hadal subset, samples clustered based on trench system (Kermadec vs. Atacama, Tukey HSD,  $p = 0.02$ ) and Atacama trench axis samples (A3 and A10 sites) grouping showed the influence of both sampling site and sediment horizon (PERMANOVA test  $p = 0.001$ ). In contrast, we did not observe a separation of samples originating from the Atacama and Kermadec regions in the abyssal subcluster, and these rather clustered according to the sediment layer, with an upper group (0 to 3–5 cm), and a lower group (3–5 to 15 cm) (Fig. 3A).

The observations were slightly different for clade *amoA*-NP-gamma-2.2 representative MAG (Fig. 3B). Separation between



**Fig. 1 Phylogenomic tree of family Nitrosopumilaceae (GTDB taxonomy, order Nitrosopumilales in accepted taxonomy).** This tree was subsetted from a phylogenomic tree of order Nitrososphaerales generated with GTDB r202, rooted using genus *Pyrococcus* as an outgroup (see Material and Methods for details). Nodes with Ultrafast bootstrap (1000 iterations) support >95% were marked in black solid points. The 47 MAGs presented in this study are shown with red diamonds or circles, depending on whether the *amoA* gene was identified or not, respectively. Blue circles correspond to 35 reference MAGs from three other deep-sea studies added to provide context to our results [15, 17, 61]. Colored shading indicates *amoA*-NP-clades for the groups of interest based on Alves et al. [10].



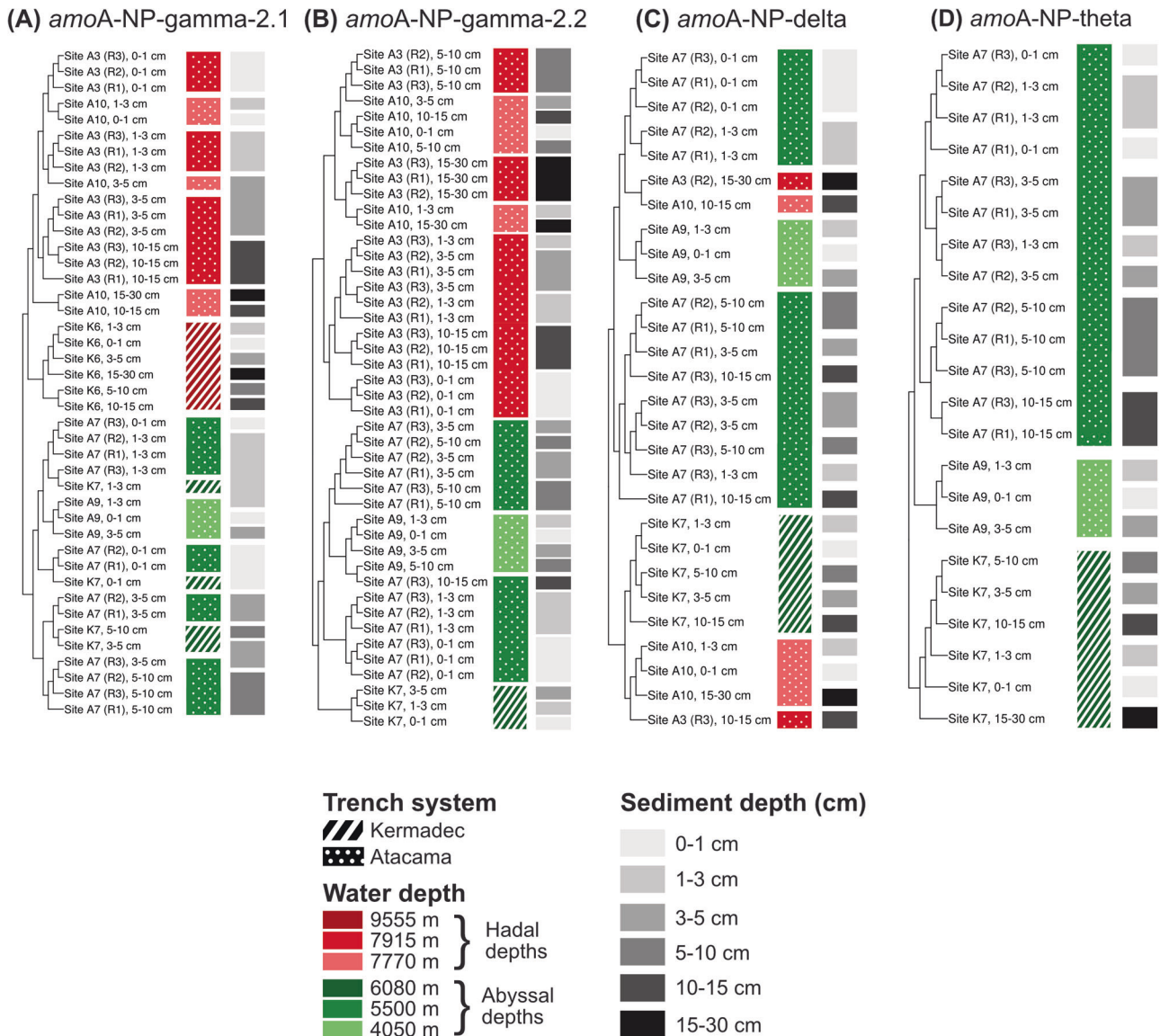
**Fig. 2** Mean coverage, used here as a proxy for relative abundance, of AOA MAGs in the samples they were reconstructed from. The size of the points is proportional to the mean coverage of the considered MAG in a given sample. Mean coverage was set to 0 in samples where detection (or breadth of coverage) was below 0.7. Bubbles are colored according to geochemical zonation of the sample (characterized in Schaubberger et al. [27]). Samples are grouped by site and replicate core when appropriate (color code on the right-hand side of the figure), and ordered vertically by increasing horizon depth. The top panel represents the ML phylogenomic tree of the reconstructed MAGs generated using GTDB toolkit and IQTREE, with *amoA* clades colored according to Alves et al. [10] and the results from Fig. 1.

hadal and abyssal samples remained (Tukey HSD,  $p = 0.0082$ ), but with no clear aggregation pattern at hadal depth apart from the replicate samples, though both site and horizon gave significant results to the PERMANOVA test ( $p < 0.006$ ). The low coverage of this MAG in Kermadec hadal samples (K6) prevented a comparison between trench axes. In contrast to *amoA*-NP-gamma-2.1, samples originating from different abyssal sites clustered apart (PERMANOVA test  $p < 0.002$ ). A similar clustering of Kermadec abyssal samples was detected for clades *amoA*-NP-delta and -theta (Fig. 3C, D, PERMANOVA test  $p = 0.001$  and  $0.03$  respectively). When *amoA*-NP-delta-affiliated MAGs were sufficiently covered in hadal samples, as illustrated in Fig. 3C, we observed an intriguing pattern of clustering of some of the deeper hadal samples with the upper layers of the Atacama abyssal sites. Finally, the *amoA*-NP-theta clade was the only one for which clustering seemed to be primarily linked with the sampling site (PERMANOVA test  $p = 0.03$ ).

In addition to these observations, we noted that replicate samples for sites A3 and A7 mostly clustered together for all clades. For all MAGs examined, there was also a clear link between clustering patterns based on  $F_{ST}$  and sediment depth, although this effect was nested within the wider environmental site characteristics (Fig. 3A, B) and will be further explored by focusing on site A7.

### Evolution of genetic variability of AOA with burial in the sediments

The influence of burial on AOA genome microdiversity during the sedimentation process can be difficult to disentangle from other environmental factors when considering multiple sampling stations. We therefore investigated changes in population structure down triplicate sediment cores from abyssal site A7, where biogeochemical conditions were identical and where all clades were present and persisted up to 10 cm below the seafloor.



**Fig. 3 Hierarchical clustering of samples based on the fixation index ( $F_{ST}$ ) computed using nucleotide-level variability profiles for clade representatives. A MAG HAK\_Bin\_00079, B MAG HAS\_Bin\_00039, C MAG H3T\_Bin\_00024, and D MAG A9S\_Bin\_00032. Hierarchical clustering based on ward linkage.**

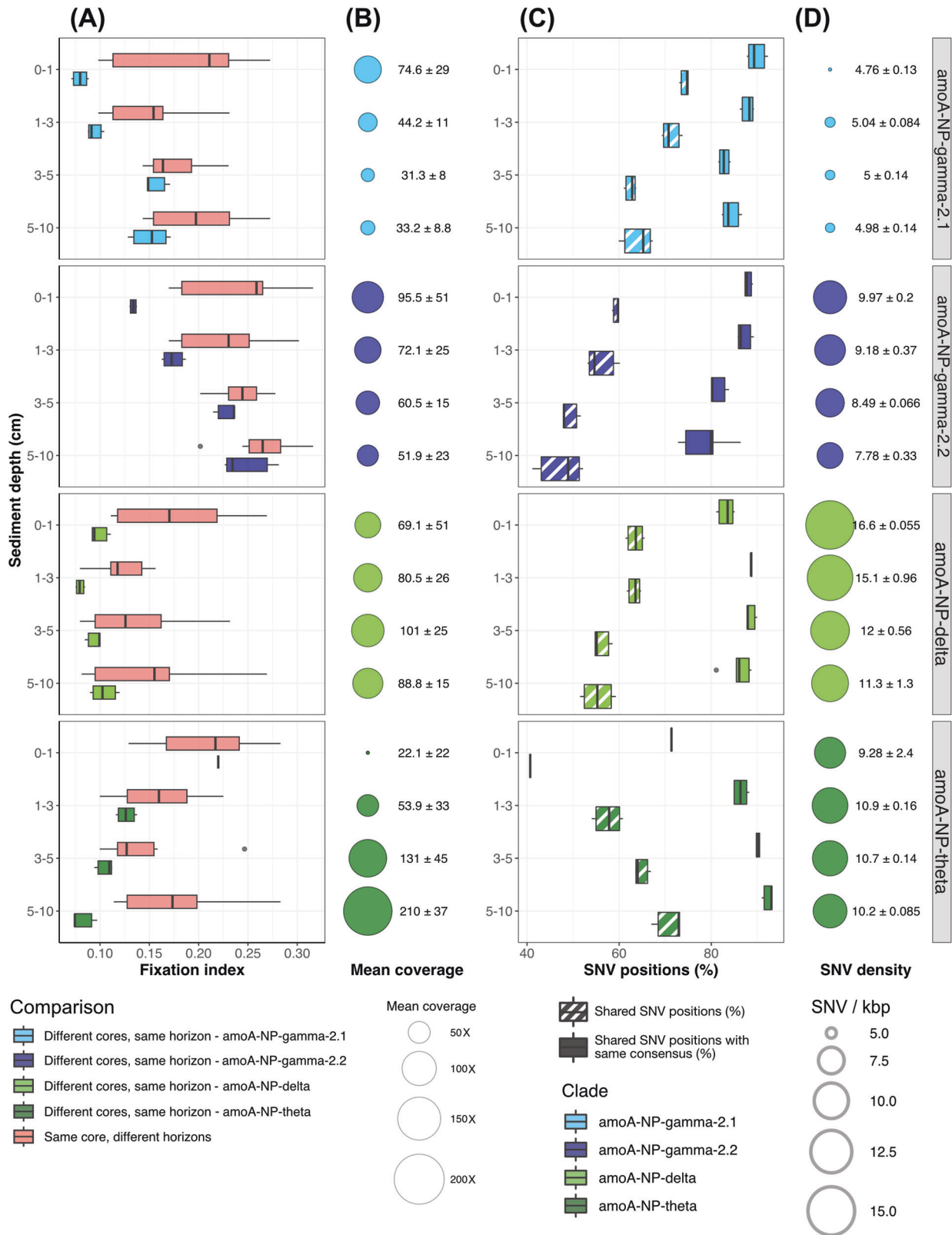
As before, we present results for one representative MAG for each clade but supplementary figures are provided (Supplementary Figs. S7–S9).

When comparing the genetic distance for each MAG between samples of the same sediment layer in replicate cores (hereafter inter-core comparison) and the distance between samples of the same core at different sediment depth (intra-core comparison), we observed that the mean inter-core distance was overall significantly lower than the mean intra-core distance (Kruskal–Wallis rank sum test,  $p < 5.8e^{-4}$ ) (Fig. 4A).

Though this pattern was general, the evolution of mean inter-core distance with sediment depth differed between clades. Indeed, it generally increased between the uppermost and lowest layers surveyed for clades *amoA*-NP-gamma-2.1 and -gamma-2.2, was overall stable for *amoA*-NP-delta, and decreased for *amoA*-NP-theta. More precisely, the lowest inter-core distances seemed to be reached at or near sediment layers where the considered MAG had the highest coverage: 0–1 cm for *amoA*-NP-gamma-2.1 and *amoA*-NP-gamma-2.2, 1–3 cm for *amoA*-NP-delta and 5–10 cm for *amoA*-NP-theta (Fig. 4A, B).

Based on the definition of the fixation index [72], a lower value can be attributed to either a lower variability between populations of the compared samples, and/or a higher within-sample variability. To distinguish between these possible influences, we further investigated the genetic variability of our MAGs in similar sediment layers of different cores (Fig. 4C, D).

The percentage of shared SNV positions, including those presenting the same consensus nucleotide (Fig. 4C), followed an opposite trend to the inter-core fixation index values for clades *amoA*-NP-gamma-2.1, -gamma-2.2 and -theta, and to a lesser extent *amoA*-NP-delta. In fact, fitting a linear regression to the evolution of the fixation index against the shared SNV, and shared SNV with the same consensus fractions yielded adjusted  $R^2$  between 0.81 and 0.97 with  $p$  values  $< 9.93e^{-10}$  for the first three clades (Supplementary Table S5). For *amoA*-NP-delta's representative MAG, the linear regression was less well fitted (adjusted  $R^2$  0.439 and 0.3647,  $p < 1e^{-3}$ ). On the other hand, downcore trends in SNV density evolution were not significant for clades *amoA*-NP-gamma-2.1 and *amoA*-NP-theta (Fig. 4D). For *amoA*-NP-gamma-2.2 and -delta, the difference in median was weakly significant



**Fig. 4 Analysis of downcore genetic variability at abyssal site A7.** **A** Downcore comparison of fixation index ( $F_{57}$ ) values between core triplicates of abyssal site A7, for each of the four main clades. Comparison between the same sediment layers from different cores is colored according to MAG *amoA* clade and comparison between different horizons of the same core in red. **B** MAG mean coverage in each sediment layer of the triplicate A7 cores, illustrated by circle size and clarified as mean ± standard deviation. **C** Percentage of single nucleotide variants (SNV) identified as variable positions in both samples when comparing similar sediment layers originating from different cores, and percentage of these shared SNVs presenting the same consensus nucleotide. **D** Mean SNV density in each sediment layer, summarized as mean ± standard deviation. MAGs considered for this analysis are the same as in Fig. 3: HAK\_Bin\_00079 for clade *amoA*-NP-gamma-2.1, HAS\_Bin\_00039 for clade *amoA*-NP-gamma-2.2, H3T\_Bin\_00024 for clade *amoA*-NP-delta, and A9S\_Bin\_00032 for clade *amoA*-NP-theta.



(Kruskal–Wallis rank sum test,  $p = 0.015$  and  $0.024$  respectively). In both cases, SNV density declined with sediment depth. Here raw SNV density values were considered since the application of a stringent filter of coverage during SNV discovery prevented differences in coverage to influence SNV detection rates. The highest proportion of shared SNV positions was reached by MAG HAK\_Bin\_00079 of clade *amoA*-NP-gamma-2.1 in the first sediment layer (75.04%). This MAG also had the lowest amount of SNVs detected, with a mean of 4.76 SNVs/kbp in horizon 0–1 cm (Fig. 4D). Overall, the strong correlation between fixation index and shared SNV fraction seemed to primarily link the observed  $F_{ST}$  patterns with variations in between-sample variability.

## DISCUSSION

Our working hypotheses motivating this study were, firstly, that hadal sediments would harbor distinct AOA clades adapted to these extreme depths, secondly, that large geographic distances between our sampling sites (~8000 km) would lead to distinct AOA distribution following a typical distance decay relationship observed elsewhere [41], and thirdly that the topology of hadal trenches may strongly limit dispersion, favoring genetic drift and leading to distinct distribution in different trenches. Our results highlight the importance of exploring different genomic diversity scales from species to populations in order to reveal ecological and evolutionary processes controlling AOA distribution in deep-sea sediments.

### Deep-sea-specific AOA clades are differently distributed along sedimentary redox gradients in abyssal and trench systems

Both shallow and hadopelagic waters are typically dominated by *amoA*-NP-gamma-2.1 AOA, comprising genus *Nitrosopumilus* [13, 15]. Here, we reconstructed 18 *amoA*-NP-gamma-2.1 MAGs. Though they were indeed placed in genus *Nitrosopumilus* (Fig. 1), they were not closely related to cultivated or enriched strains such as *Nitrosopumilus maritimus* [5], which were recovered from shallower environments [80–83]. They rather formed a deep-sea cluster, grouping together 18 MAGs from this study, 10 of the chosen reference deep-sea MAGs, and 8 GTDB MAGs also originating from deep-sea samples [14, 84–89]. Interestingly, some of these latter MAGs were deep-sea sponge-associated *Nitrosopumilaceae*, while others were free-living organisms, suggesting a stronger influence of water depth than free-living or host-associated lifestyle in separating this cluster from the shallower water cluster. Similarly, the recovered MAGs affiliated with typically abyssobenthic clades *amoA*-NP-theta and *amoA*-NP-delta clustered remarkably close to external reference MAGs from abyssal plains [17] and Challenger's Deep adjacent slopes [61] in our phylogenomic tree (Fig. 1), with very few representatives present in the GTDB [90–92].

Clades *amoA*-NP-gamma-2.1 and -gamma-2.2 were found to have a ubiquitous distribution in the upper layers of the sampling sites (Fig. 2). Though it is unclear how related pelagic and benthic *amoA*-NP-gamma-2.1 and -gamma-2.2 AOA are, their distribution pattern seemed to indicate a wide dispersal capability, most likely through the water column. The unexpected “resurgence” in coverage for *amoA*-NP-gamma-2.2 clade members in the ferruginous zone of trench axis sites A10 and A3 was puzzling. Nitric oxide dismutation (NO) has recently been proposed as a source of oxygen for AOA in anoxic environments [93]; however, geochemical characterization of the same study sites showed that both nitrate and nitrite, necessary for the reaction, are depleted at these depths [42]. Reactive iron and manganese oxides, which could have been alternative electron acceptors, were also shown to be depleted in these layers. Hence, as of now, the energy metabolism of these microorganisms remains enigmatic.

In contrast with the *amoA*-NP-gamma clades, it seemed that *amoA*-NP-delta and -theta clades were strictly benthic clades, with

the highest coverage observed here in different abyssal sediment layers (0–10 and 3–30 cm, respectively) (Fig. 2). This observation was in agreement with previous studies that showed that *amoA*-NP-theta *Nitrosopumilaceae* dominated subsurface AOA communities, while *amoA*-NP-delta exhibited little variation in abundance with sediment depth [16, 17, 24]. The *amoA*-NP-theta clade could be adapted to low-oxygen environments, since they are absent from hadal sediments where the oxic zone is much shallower and the low-oxygen niche could be absent [19]. Alternatively, they could have developed an affinity for low organic reactivity environments, another feature of abyssal sediments. As for the *amoA*-NP-delta clade, their presence at abyssal site A9 where oxygen levels are more comparable to those of hadal sites [19] discounts the low-oxygen hypothesis. They could be more sensitive to hydrostatic pressure and thus less capable of transitioning to the hadal zone, given that they have often been identified in estuarine environments [94, 95]. In any case, the presence of the same *amoA*-NP-delta MAGs on both sides of the Atacama trench at sites A7 and A9 but not in the trench axis hinted at a deterministic environmental influence rather than a lack of dispersal (Fig. 2).

Overall, our results show that abyssal and hadal sediments are populated by AOA specific to these deep-sea environments, and more particularly to different niches related to the redox gradient. It thus appears that lineage-level AOA distribution in the deep-sea follows a classical niche theory [96, 97], mostly controlled by environmental parameters. Consequently, AOA distribution may be strongly coupled with organic matter input to the seafloor, which depends on ocean surface primary productivity, oceanic depth, trench morphology and substrate funneling, etc.

### Relative contribution of geographic distance and environmental constraints to AOA genome- and population-level distribution

To gain further insights into the drivers of deep-sea sedimentary AOA distribution at finer evolutionary scales, we investigated their population-level biogeography by characterizing their genetic variability using within-MAG patterns of point mutations (SNVs). In contrast to clade and genome level patterns, we obtained strong evidence for water depth influence on population structure. For ubiquitous clades *amoA*-NP-gamma-2.1 and -gamma-2.2,  $F_{ST}$ -based clustering patterns delineated distinct populations along the bathymetric gradient, with a clear separation of abyssal from hadal samples (Fig. 3A, B). As was observed by Schaubberger et al. [27] with a metabarcoding dataset on these samples, oceanic depth and the parameters associated with the transition between abyssal and hadal realms had a stronger structuring influence than geographic distance or differences in primary productivity above both trenches. Results regarding *amoA*-NP-delta and theta were less conclusive due to the lack of coverage of these MAGs in hadal samples.

In addition to water depth, our results highlighted the imprint of geographic distance on genomic variability and population structure at abyssal depths. We indeed observed a separation of samples according to their sampling region for *amoA*-NP-gamma-2.2 and *amoA*-NP-delta and *amoA*-NP-theta in the abyssal cluster (Fig. 3B–D). Here we did not have the appropriate metadata to disentangle between potential stochastic processes (dispersal limitation, drift, etc.) and environmental filtering. However, this observation was not repeated for *amoA*-NP-gamma-2.1 in abyssal samples: populations found in similar sediment layers on both sides of the Atacama trench axis or separated by thousands of kilometers were more closely related than with populations found a few vertical centimeters apart in the same sediment core (Fig. 3A). Different processes may explain this distinct behavior: on the one hand, ecological niches of *amoA*-NP-gamma AOA are generally located close to the sediment surface or in overlying waters, a position that may favor their dispersal in the water

column compared to their more deeply entrenched counterparts. On the other hand, a strong purifying selection may filter for a small subset of pelagic populations able to adopt a benthic lifestyle. The relatively low SNV density observed in *amoA*-NP-gamma-2.1 (mean SNV density by sample 4.5 SNVs/kbp, compared to 8.7, 7.1 and 12.5 SNVs/kbp for *amoA*-NP-gamma-2.2, -delta and -theta, respectively) would argue for the latter explanation. The high dispersal capability and low genetic variability of clade *amoA*-NP-gamma-2.1 featured here across considerable geographic distance make it an interesting target to study the connectivity between benthic and pelagic populations in the future.

Finally, the potential for hadal trenches to act as a barrier to dispersal could only be evaluated with the MAGs from the *amoA*-NP-gamma-2.1 clade that had enough coverage in both trench systems. This clade clearly exhibited a clustering by trench, with separated grouping of Kermadec and Atacama trench axis samples (Fig. 3A). Such segregation may result from differences in sediment composition between trenches, by dispersal limitations leading to population-level ecological drift, or by the combination of both.

In addition, for all clades, the link between fixation index and sediment depth was clear but appeared nested within other influences (such as for the Atacama abyssal samples for clade *amoA*-NP-delta, Fig. 3C). This observation was in line with general observations of strong stratification of microbial communities with sediment depth in marine environments in general [28–30] and in the Atacama trench in particular [27]. Interestingly, our results suggested that niche structure, which determines the preferential sediment depth of the different AOA clades, is strongly correlated with their respective dispersal capacities, which in turn determines population structure. This was well illustrated by results from *amoA*-NP-gamma-2.1 members (Fig. 3A and Supplementary Fig. S3), generally living closer to the sediment surface and exhibiting long-range genomic homogeneity, while deeply entrenched *amoA*-NP-theta tended to display site-specific population structure (Fig. 3D and Supplementary Fig. S6).

### Vertical population structuring processes depend on ecological niche

Based on these latter observations, we specifically investigated the effect of sediment depth on AOA population structure. We thus focused our population analysis on triplicate cores taken from two multicorer casts, meters apart, at Atacama abyssal site A7. Previous studies have shown that geochemical gradients along sediment depth exert a strong and deterministic selection on community structure [27, 98–100]. We thus hypothesized that a similar pattern could emerge at the population level.

In our study, fixation indices between identical sediment layers in different cores were consistently lower than between different sediment layers in the same core (Fig. 4A). Hence, similarly to community assembly, population assembly seemed strongly controlled by downcore biogeochemistry rather than stochastic factors. In addition, this inter-core horizontal comparison was consistently at its lowest for sediment depths best fitting the niche of each clade (i.e., where coverage was highest): close to the surface for *amoA*-NP-gammas, between 3 and 10 cm for *amoA*-NP-delta, and below 5 cm for *amoA*-NP-theta. The highest proportions of shared SNVs and shared SNVs with the same consensus matched these  $F_{ST}$  minima (Fig. 4C). Together, these results support the hypothesis of a specific ecological niche for each clade where genetic variability is submitted to strong selective pressures.

This is most visible for the *amoA*-NP-theta clade, with the lowest fixation index values between samples of sediment layer 5–10 cm (Fig. 4A). Though we see a limited increase in SNV density with sediment depth that could suggest random within-sample diversification, it is actually associated with a strong increase in

the number of shared variable positions between samples and variable positions with the same consensus nucleotide (Fig. 4C). This strongly supports the influence of convergent selection. Contrastingly, for *amoA*-NP-gamma-2.1, -gamma-2.2 and -delta, we observed an increase in fixation index with increasing sediment depth (below 3 cm for *amoA*-NP-delta) (Fig. 4A), suggesting populations drifting apart with burial in the sediments either as a result of dispersal limitation or due to the decay of selective pressure while departing from the clade's optimum niche. These results illustrate the usefulness of metagenomic data in growing our understanding of microbial biogeography at multiple genomic scales.

### CONCLUSION

Here, we used metagenomic data to reconstruct 10 good-quality *Nitrosopumilaceae* MAGs, and 37 additional bins of varying completeness. We showed that at the genome level, they fall within deep-sea-specific clades, the distribution of which corresponds to distinct ecological niches: the predominance of *amoA*-NP-gamma clades in the surface layers of all sites contrasted with the positioning of *amoA*-NP-theta and delta in the deeper sediments of open ocean abyssal sites where oxygen persists. We also confirmed the strong structuring influence of the transition between hadal and abyssal realms, even at the genomic level. In the future, it will be particularly interesting to delve deeper into this genomic variability and the potential processes explaining its specificity to one or the other realm.

When investigating the downcore genetic variability of the reconstructed genomes, we found hints of the influence of purifying selective pressure in the layers best fitting the ecological niche (i.e., where genomes had the highest coverage), particularly visible for *amoA*-NP-theta. In other layers apparently offering less favorable conditions for life, signatures of stochastic processes such as drift were detected, as exemplified by *amoA*-NP-gamma clades below 3 cm. These findings build upon previous studies highlighting the vertical deterministic structuring of microbial communities in marine sediments [98–100] and demonstrate that stochastic processes, of increasing importance in deeper sediment layers and in the subseafloor [32], are already at play in the oxic zone of comparably young sediments.

### DATA AVAILABILITY

The dataset generated for this study has been submitted to the European Nucleotide Archive (ENA) under project PRJEB57745 as part of the larger eDNAbyss project (PRJEB39225). Details of the sample correspondence are provided in Supplementary Table S2. Assembled MAGs are available on ENA under study PRJEB60556. In addition, annotated contigs and profile databases, as well as scripts for the full bioinformatic workflow will be available upon publication at <https://loimai.github.io/abyssMG/>.

### REFERENCES

- Francis CA, Roberts KJ, Beman JM, Santoro AE, Oakley BB. Ubiquity and diversity of ammonia-oxidizing archaea in water columns and sediments of the ocean. *Proc Natl Acad Sci USA*. 2005;102:14683–8.
- Stahl DA, de la Torre JR. Physiology and diversity of ammonia-oxidizing archaea. *Annu Rev Microbiol*. 2012;66:83–101.
- Qin W, Zheng Y, Zhao F, Wang Y, Urakawa H, Martens-Habbena W, et al. Alternative strategies of nutrient acquisition and energy conservation map to the biogeography of marine ammonia-oxidizing archaea. *ISME J*. 2020;14:2595–609.
- Hooper AB, Vannelli T, Bergmann DJ, Arciero DM. Enzymology of the oxidation of ammonia to nitrite by bacteria. *Antonie Van Leeuwenhoek*. 1997;71:59–67.
- Könneke M, Bernhard AE, de la Torre JR, Walker CB, Waterbury JB, Stahl DA. Isolation of an autotrophic ammonia-oxidizing marine archaeon. *Nature*. 2005;437:543–6.
- Simon J, Klotz MG. Diversity and evolution of bioenergetic systems involved in microbial nitrogen compound transformations. *Biochim Biophys Acta*. 2013;1827:114–35.

7. Quast C, Pruesse E, Yilmaz P, Gerken J, Schweer T, Yarza P, et al. The SILVA ribosomal RNA gene database project: improved data processing and web-based tools. *Nucleic Acids Res.* 2012;41:D590–6.
8. Parks DH, Chuvochina M, Waite DW, Rinke C, Skarshewski A, Chaumeil PA, et al. A complete domain-to-species taxonomy for Bacteria and Archaea. *Nat Biotechnol.* 2020;38:1079–86.
9. Rinke C, Chuvochina M, Mussig AJ, Chaumeil PA, Davin AA, Waite DW, et al. A standardized archaeal taxonomy for the Genome Taxonomy Database. *Nat Microbiol.* 2021;6:946–59.
10. Alves RJE, Minh BQ, Urich T. Unifying the global phylogeny and environmental distribution of ammonia-oxidising archaea based on amoA genes. *Nat Commun.* 2018;9:1517. 17
11. Sintez E, Bergauer K, De Corte D, Yokokawa T, Herndl GJ. Archaeal amoA gene diversity points to distinct biogeography of ammonia-oxidizing *Crenarchaeota* in the ocean. *Environ Microbiol.* 2013;15:1647–58.
12. Nunoura T, Hirai M, Yoshida-Takashima Y, Nishizawa M, Kawagucci S, Yokokawa T, et al. Distribution and niche separation of planktonic microbial communities in the water columns from the surface to the hadal waters of the Japan trench under the Eutrophic Ocean. *Front Microbiol.* 2016;7:1261.
13. Nunoura T, Nishizawa M, Hirai M, Shimamura S, Harnvoravongchai P, Koide O, et al. Microbial diversity in sediments from the bottom of the challenger deep, the Mariana Trench. *Microbes Environ.* 2018;33:186–94.
14. Wang Y, Huang JM, Cui GJ, Nunoura T, Takaki Y, Li WL, et al. Genomics insights into ecotype formation of ammonia-oxidizing archaea in the deep ocean. *Environ Microbiol.* 2019;21:716–29.
15. Zhong H, Lehtovirta-Morley L, Liu J, Zheng Y, Lin H, Song D, et al. Novel insights into the Thaumarchaeota in the deepest oceans: their metabolism and potential adaptation mechanisms. *Microbiome.* 2020;8:78.
16. Zhao R, Dahle H, Ramirez GA, Jørgensen SL. Indigenous ammonia-oxidizing archaea in oxic subseafloor oceanic crust. *mSystems.* 2020;5:e00758-19.
17. Kerou M, Ponce-Toledo R, Zhao R, Abby SS, Hirai M, Nomaki H, et al. Genomes of Thaumarchaeota from deep sea sediments reveal specific adaptations of three independently evolved lineages. *ISME J.* 2021;15:2792–808.
18. Ichino MC, Clark MR, Drazen JC, Jamieson A, Jones DOB, Martin AP, et al. The distribution of benthic biomass in hadal trenches: a modelling approach to investigate the effect of vertical and lateral organic matter transport to the seafloor. *Deep Sea Res Part Oceanogr Res Pap.* 2015;100:21–33.
19. Glud RN, Berg P, Thamdrup B, Larsen M, Stewart HA, Jamieson AJ, et al. Hadal trenches are dynamic hotspots for early diagenesis in the deep sea. *Commun Earth Environ.* 2021;2:21.
20. Danovaro R, Della Croce N, Dell'Anno A, Pusceddu A. A depocenter of organic matter at 7800m depth in the SE Pacific Ocean. *Deep Sea Res Part Oceanogr Res Pap.* 2003;50:1411–20.
21. Kioka A, Schwestermann T, Moernaut J, Ikehara K, Kanamatsu T, McHugh CM, et al. Megathrust earthquake drives drastic organic carbon supply to the hadal trench. *Sci Rep.* 2019;9:1553.
22. Turnewitsch R, Falahat S, Stehlikova J, Oguri K, Glud RN, Middelboe M, et al. Recent sediment dynamics in hadal trenches: evidence for the influence of higher-frequency (tidal, near-inertial) fluid dynamics. *Deep Sea Res Part Oceanogr Res Pap.* 2014;90:125–38.
23. Wenzhöfer F, Oguri K, Middelboe M, Turnewitsch R, Toyofuku T, Kitazato H, et al. Benthic carbon mineralization in hadal trenches: assessment by in situ O<sub>2</sub> micro-profile measurements. *Deep Sea Res Part Oceanogr Res Pap.* 2016;116:276–86.
24. Vuillemin A, Wankel SD, Coskun ÖK, Magritsch T, Vargas S, Estes ER, et al. Archaea dominate oxic subseafloor communities over multimillion-year time scales. *Sci Adv.* 2019;5:eaaw4108.
25. Hiraoka S, Hirai M, Matsui Y, Makabe A, Minegishi H, Tsuda M, et al. Microbial community and geochemical analyses of trans-trench sediments for understanding the roles of hadal environments. *ISME J.* 2020;14:740–56.
26. Peoples LM, Grammatopoulou E, Pombrol M, Xu X, Osuntokun O, Blanton J, et al. Microbial community diversity within sediments from two geographically separated hadal trenches. *Front Microbiol.* 2019;10:347.
27. Schaubberger C, Glud RN, Hausmann B, Trouche B, Maignien L, Poulain J, et al. Microbial community structure in hadal sediments: high similarity along trench axes and strong changes along redox gradients. *ISME J.* 2021;15:3455–67.
28. Emerson S, Jahnke R, Bender M, Froelich P, Klinkhammer G, Bowser C, et al. Early diagenesis in sediments from the Eastern Equatorial Pacific, I. Pore water nutrient and carbonate results. *Earth Planet Sci Lett.* 1980;49:57–80.
29. Durbin AM, Teske A. Microbial diversity and stratification of South Pacific abyssal marine sediments. *Environ Microbiol.* 2011;13:3219–34.
30. Orcutt BN, Sylvan JB, Knab NJ, Edwards KJ. Microbial Ecology of the Dark Ocean above, at, and below the Seafloor. *Microbiol Mol Biol Rev.* 2011;75:361–422.
31. Anderson RE, Reveillaud J, Reddington E, Delmont TO, Eren AM, McDermott JM, et al. Genomic variation in microbial populations inhabiting the marine sub-seafloor at deep-sea hydrothermal vents. *Nat Commun.* 2017;8:1114.
32. Anderson RE, Graham ED, Huber JA, Tully BJ. Microbial populations are shaped by dispersal and recombination in a low biomass subseafloor habitat. *mBio.* 2022;13:e00354–22.
33. Delmont TO, Kiefl E, Kilinc O, Esen OC, Uysal I, Rappé MS, et al. Single-amino acid variants reveal evolutionary processes that shape the biogeography of a global SAR11 subclade. *eLife.* 2019;8:e46497.
34. Hwang Y, Girguis PR. Differentiated evolutionary strategies of genetic diversification in Atlantic and Pacific Thaumarchaeal populations. *mSystems.* 2022;7:e01477–21.
35. Erguder TH, Boon N, Wittebolle L, Marzorati M, Verstraete W. Environmental factors shaping the ecological niches of ammonia-oxidizing archaea. *FEMS Microbiol Rev.* 2009;33:855–69.
36. Schleper C. Ammonia oxidation: different niches for bacteria and archaea? *ISME J.* 2010;4:1092–4.
37. Hatzenpichler R. Diversity, physiology, and niche differentiation of ammonia-oxidizing archaea. *Appl Environ Microbiol.* 2012;78:7501–10.
38. Cao H, Auguet JC, Gu JD. Global ecological pattern of ammonia-oxidizing archaea. *PLoS ONE.* 2013;8:e52853.
39. Gubry-Rangin C, Kratsch C, Williams TA, McHardy AC, Embley TM, Prosser JI, et al. Coupling of diversification and pH adaptation during the evolution of terrestrial Thaumarchaeota. *Proc Natl Acad Sci USA.* 2015;112:9370–5.
40. Schaubberger C, Middelboe M, Larsen M, Peoples LM, Bartlett DH, Kirpekar F, et al. Spatial variability of prokaryotic and viral abundances in the Kermadec and Atacama Trench regions. *Limnol Oceanogr.* 2021;66:2095–109.
41. Trouche B, Brandt M, Belser C, Orejas C, Pesant S, Poulain J, et al. Diversity and biogeography of bathyal and abyssal seafloor bacteria and archaea along a Mediterranean—Atlantic Gradient. *Front Microbiol.* 2021;12:702016.
42. Thamdrup B, Schaubberger C, Larsen M, Trouche B, Maignien L, Arnaud-Haond S, et al. Anammox bacteria drive fixed nitrogen loss in hadal trench sediments. *Proc Natl Acad Sci USA.* 2021;118:e2104529118.
43. Eren AM, Vineis JH, Morrison HG, Sogin ML. A filtering method to generate high quality short reads using illumina paired-end technology. *PLoS ONE.* 2013;8:e66643.
44. Minoche AE, Dohm JC, Himmelbauer H. Evaluation of genomic high-throughput sequencing data generated on Illumina HiSeq and Genome Analyzer systems. *Genome Biol.* 2011;12:R112.
45. Benoit G, Peterlongo P, Mariadassou M, Drezen E, Schbath S, Lavenier D, et al. Multiple comparative metagenomics using multiset *k*-mer counting. *PeerJ Comput Sci.* 2016;2:e94.
46. Köster J, Rahmann S. Snakemake—a scalable bioinformatics workflow engine. *Bioinformatics.* 2012;28:2520–2.
47. Shaiber A, Willis AD, Delmont TO, Roux S, Chen LX, Schmid AC, et al. Functional and genetic markers of niche partitioning among enigmatic members of the human oral microbiome. *Genome Biol.* 2020;21:292.
48. Eren AM. Community-led, integrated, reproducible multi-omics with anvio. *Nat Microbiol.* 2021;6:3–6.
49. Li D, Liu CM, Luo R, Sadakane K, Lam TW. MEGAHIT: an ultra-fast single-node solution for large and complex metagenomics assembly via succinct de Bruijn graph. *Bioinformatics.* 2015;31:1674–6.
50. Hyatt D, Chen GL, LoCascio PF, Land ML, Larimer FW, Hauser LJ. Prodigal: prokaryotic gene recognition and translation initiation site identification. *BMC Bioinformatics.* 2010;11:119.
51. Aramaki T, Blanc-Mathieu R, Endo H, Ohkubo K, Kanehisa M, Goto S, et al. KofamKOALA: KEGG Ortholog assignment based on profile HMM and adaptive score threshold. *Bioinformatics.* 2020;36:2251–2.
52. Galperin MY, Wolf YI, Makarova KS, Vera Alvarez R, Landsman D, Koonin EV. COG database update: focus on microbial diversity, model organisms, and widespread pathogens. *Nucleic Acids Res.* 2021;49:D274–81.
53. Makarova K, Wolf Y, Koonin E. Archaeal Clusters of Orthologous Genes (arCOGs): an update and application for analysis of shared features between thermococcales, methanococcales, and methanobacteriales. *Life.* 2015;5:818–40.
54. Langmead B, Trapnell C, Pop M, Salzberg SL. Ultrafast and memory-efficient alignment of short DNA sequences to the human genome. *Genome Biol.* 2009;10:R25.
55. Danecek P, Bonfield JK, Liddle J, Marshall J, Ohan V, Pollard MO, et al. Twelve years of SAMtools and BCFtools. *GigaScience.* 2021;10:giab008.
56. Alneberg J, Bjarnason BS, de Bruijn I, Schirmer M, Quick J, Ijaz UZ, et al. Binning metagenomic contigs by coverage and composition. *Nat Methods.* 2014;11:1144–6.
57. Eren AM, Esen ÖC, Quince C, Vineis JH, Morrison HG, Sogin ML, et al. Anv'io: an advanced analysis and visualization platform for 'omics data. *PeerJ.* 2015;3:e1319.
58. Lee MD. GToTree: a user-friendly workflow for phylogenomics. *Bioinformatics.* 2019;35:4162–4.
59. Parks DH, Imelfort M, Skennerton CT, Hugenholtz P, Tyson GW. CheckM: assessing the quality of microbial genomes recovered from isolates, single cells, and metagenomes. *Genome Res.* 2015;25:1043–55.

60. The Genome Standards Consortium Bowers RM, Kyrpides NC, Stepanauskas R, Harmon-Smith M, Doud D, et al. Minimum information about a single amplified genome (MISAG) and a metagenome-assembled genome (MIMAG) of bacteria and archaea. *Nat Biotechnol.* 2017;35:725–31.
61. Zhou YL, Mara P, Cui GJ, Edgcomb VP, Wang Y. Microbiomes in the Challenger Deep slope and bottom-axis sediments. *Nat Commun.* 2022;13:1515.
62. Fu L, Niu B, Zhu Z, Wu S, Li W. CD-HIT: accelerated for clustering the next-generation sequencing data. *Bioinformatics.* 2012;28:3150–2.
63. Zhang Z, Schwartz S, Wagner L, Miller W. A greedy algorithm for aligning DNA sequences. *J Comput Biol.* 2000;7:203–14.
64. Katoh K. MAFFT: a novel method for rapid multiple sequence alignment based on fast Fourier transform. *Nucleic Acids Res.* 2002;30:3059–66.
65. Barbera P, Kozlov AM, Czech L, Morel B, Darriba D, Flouri T, et al. EPA-ng: massively parallel evolutionary placement of genetic sequences. *Syst Biol.* 2019;68:365–9.
66. Yu G, Smith DK, Zhu H, Guan Y, Lam TT. GGTREE: an R package for visualization and annotation of phylogenetic trees with their covariates and other associated data. *Methods Ecol Evol.* 2017;8:28–36.
67. Wang LG, Lam TTY, Xu S, Dai Z, Zhou L, Feng T, et al. Treeio: an R package for phylogenetic tree input and output with richly annotated and associated data. *Mol Biol Evol.* 2020;37:599–603.
68. Chaumeil PA, Mussig AJ, Hugenholtz P, Parks DH. GTDB-Tk: a toolkit to classify genomes with the Genome Taxonomy Database. *Bioinformatics.* 2020;36:1925–7.
69. Parks DH, Chuvochina M, Waite DW, Rinke C, Skarshewski A, Chaumeil PA, et al. A standardized bacterial taxonomy based on genome phylogeny substantially revises the tree of life. *Nat Biotechnol.* 2018;36:996–1004.
70. Hoang DT, Chernomor O, von Haeseler A, Minh BQ, Vinh LS. UFBoot2: improving the ultrafast bootstrap approximation. *Mol Biol Evol.* 2018;35:518–22.
71. Minh BQ, Schmidt HA, Chernomor O, Schrempf D, Woodhams MD, von Haeseler A, et al. IQ-TREE 2: new models and efficient methods for phylogenetic inference in the genomic era. *Mol Biol Evol.* 2020;37:1530–4.
72. Schloissnig S, Arumugam M, Sunagawa S, Mitreva M, Tap J, Zhu A, et al. Genomic variation landscape of the human gut microbiome. *Nature.* 2013;493:45–50.
73. Wickham H, François R, Henry L, Müller K, Vaughan D. dplyr: a grammar of data manipulation. 2023. <https://dplyr.tidyverse.org>, <https://github.com/tidyverse/dplyr>.
74. Wickham H. ggplot2: elegant graphics for data analysis. Cham: Springer International Publishing; 2016. <http://link.springer.com/10.1007/978-3-319-24277-4>. Accessed 11 Oct 2021.
75. Pedersen TL. patchwork. 2022. <https://patchwork.data-imaginist.com/>.
76. Wickham H. tidy: tidy messy data. 2021. <https://CRAN.R-project.org/package=tidy>.
77. Yu G, Jones B, Arendsee Z. tidytree: a tidy tool for phylogenetic tree data manipulation. 2022. <https://CRAN.R-project.org/package=tidytree>.
78. Oksanen J, Blanchet FG, Friendly M, Kindt R, Legendre P, McGlenn D, et al. vegan: community ecology package. 2020. <https://CRAN.R-project.org/package=vegan>.
79. Zhang S, Song W, Wemheuer B, Reveillard J, Webster N, Thomas T. Comparative genomics reveals ecological and evolutionary insights into sponge-associated *Thaumarchaeota*. *mSystems.* 2019;4:e00288–19.
80. Mosier AC, Allen EE, Kim M, Ferriera S, Francis CA. Genome sequence of “*Candidatus Nitrosopumilus salaria*” BD31, an ammonia-oxidizing Archaeon from the San Francisco Bay Estuary. *J Bacteriol.* 2012;194:2121–2.
81. Park SJ, Kim JG, Jung MY, Kim SJ, Cha IT, Ghai R, et al. Draft genome sequence of an ammonia-oxidizing Archaeon, “*Candidatus Nitrosopumilus sediminis*” AR2, from Svalbard in the Arctic Circle. *J Bacteriol.* 2012;194:6948–9.
82. Park SJ, Kim JG, Jung MY, Kim SJ, Cha IT, Kwon K, et al. Draft genome sequence of an ammonia-oxidizing Archaeon, “*Candidatus Nitrosopumilus koreensis*” AR1, from Marine Sediment. *J Bacteriol.* 2012;194:6940–1.
83. Bayer B, Vojvoda J, Reinthaler T, Reyes C, Pinto M, Herndl GJ. *Nitrosopumilus adriaticus* sp. nov. and *Nitrosopumilus piranensis* sp. nov., two ammonia-oxidizing archaea from the Adriatic Sea and members of the class Nitrososphaeria. *Int J Syst Evol Microbiol.* 2019;69:1892–902.
84. Mehrshad M, Amoozegar MA, Ghai R, Shahzadeh Fazeli SA, Rodriguez-Valera F. Genome reconstruction from metagenomic data sets reveals novel microbes in the Brackish Waters of the Caspian Sea. *Appl Environ Microbiol.* 2016;82:1599–612.
85. Tian RM, Sun J, Cai L, Zhang WP, Zhou GW, Qiu JW, et al. The deep-sea glass sponge *Lophophysema eversa* harbours potential symbionts responsible for the nutrient conversions of carbon, nitrogen and sulfur: potential symbionts in a glass sponge. *Environ Microbiol.* 2016;18:2481–94.
86. Tully BJ, Graham ED, Heidelberg JF. The reconstruction of 2,631 draft metagenome-assembled genomes from the global oceans. *Sci Data.* 2018;5:170203.
87. Tully BJ, Wheat CG, Glazer BT, Huber JA. A dynamic microbial community with high functional redundancy inhabits the cold, oxic seafloor aquifer. *ISME J.* 2018;12:1–16.
88. Haber M, Burgsdorf I, Handley KM, Rubin-Blum M, Steindler L. Genomic insights into the lifestyles of Thaumarchaeota inside sponges. *Front Microbiol.* 2021;11:622824.
89. Poff KE, Leu AO, Eppley JM, Karl DM, DeLong EF. Microbial dynamics of elevated carbon flux in the open ocean’s abyss. *Proc Natl Acad Sci USA.* 2021;118:e2018269118.
90. Kato S, Hirai M, Ohkuma M, Suzuki K. Microbial metabolisms in an abyssal ferromanganese crust from the Takuyo-Daigo Seamount as revealed by metagenomics. *PLoS ONE.* 2019;14:e0224888.
91. Hug LA, Thomas BC, Brown CT, Frischkorn KR, Williams KH, Tringe SG, et al. Aquifer environment selects for microbial species cohorts in sediment and groundwater. *ISME J.* 2015;9:1846–56.
92. Zhou Z, Liu Y, Xu W, Pan J, Luo ZH, Li M. Genome- and community-level interaction insights into carbon utilization and element cycling functions of *Hydrothermarchaeota* in hydrothermal sediment. *mSystems.* 2020;5:e00795–19.
93. Kraft B, Jehmlich N, Larsen M, Bristow LA, Könneke M, Thamdrup B, et al. Oxygen and nitrogen production by an ammonia-oxidizing archaeon. *Science.* 2022;375:97–100.
94. Hug LA, Thomas BC, Sharon I, Brown CT, Sharma R, Hettich RL, et al. Critical biogeochemical functions in the subsurface are associated with bacteria from new phyla and little studied lineages: N- and C-cycling organisms in the subsurface. *Environ Microbiol.* 2016;18:159–73.
95. Park SJ, Park BJ, Rhee SK. Comparative analysis of archaeal 16S rRNA and amoA genes to estimate the abundance and diversity of ammonia-oxidizing archaea in marine sediments. *Extremophiles.* 2008;12:605–15.
96. Vandermeer JH. Niche theory. *Annu Rev Ecol Syst.* 1972;3:107–32.
97. Cohan FM. What are bacterial species? *Annu Rev Microbiol.* 2002;56:457–87.
98. Petro C, Starnawski P, Schramm A, Kjeldsen K. Microbial community assembly in marine sediments. *Aquat Microb Ecol.* 2017;79:177–95.
99. Petro C, Zäncker B, Starnawski P, Jochum LM, Ferdelman TG, Jørgensen BB, et al. Marine deep biosphere microbial communities assemble in near-surface sediments in Aarhus Bay. *Front Microbiol.* 2019;10:758.
100. Starnawski P, Bataillon T, Ettema TJG, Jochum LM, Schreiber L, Chen X, et al. Microbial community assembly and evolution in seafloor sediment. *Proc Natl Acad Sci USA.* 2017;114:2940–5.

## ACKNOWLEDGEMENTS

Samples for this study were obtained during research cruises TAN1711 and SO261. We wish to thank all the participants of the cruises who aided in the sampling efforts: the captains, crews, chief scientists and scientific parties of the R/V Sonne (SO261; ship time provided by BMBF, Germany, awarded to Frank Wenzhoefer, Mathias Zabel, and Ronnie N. Glud) and R/V Tangaroa (TAN1711; ship time partly funded by Coasts & Oceans Centre of New Zealand’s National Institute of Water & Atmospheric Research (NIWA), awarded to Ashley A. Rowden and Ronnie N. Glud). Special thanks to Miriam Brandt (Ifremer, France), Daniela Zeppilli (Ifremer, France) and Mathias Zabel (Marum, Germany) for their technical assistance at sea.

## AUTHOR CONTRIBUTIONS

BTrouche, CS, BThamdrup, SA-H, RNG and LM designed the study. BTrouche, CS, CB, JP and SA-H carried out field and laboratory work. RNG supplied ship time to conduct the sampling in both trenches. BTrouche and FB performed the bioinformatic and statistical analyses. BTrouche, CS, BThamdrup, SA-H, RNG and LM contributed to data interpretation. BTrouche and LM drafted the manuscript, reviewed by CS, BThamdrup, SA-H and RNG, and all authors contributed to the final manuscript.

## FUNDING

This work was part of the “Pourquoi Pas les Abysses?” project funded by Ifremer and the project eDNAbyss (AP2016-228) funded by France Génomique (ANR-10-INBS-09) and Genoscope-CEA. It also benefited from a grant from the University of Western Brittany (UBO) through the Ecole Doctorale des Sciences de la Mer et du Littoral (EDSML). Finally, it received financial support from the Advanced ERC grant “Benthic diagenesis and microbiology of hadal trenches”, HADES-ERC; #669947 and the Danish National Research Foundation grant DNRF145 to establish the Danish Center for Hadal Research, both awarded to RNG.

## COMPETING INTERESTS

The authors declare no competing interests.

**ADDITIONAL INFORMATION**

**Supplementary information** The online version contains supplementary material available at <https://doi.org/10.1038/s43705-023-00341-6>.

**Correspondence** and requests for materials should be addressed to Blandine Trouche or Loïs. Maignien.

**Reprints and permission information** is available at <http://www.nature.com/reprints>

**Publisher's note** Springer Nature remains neutral with regard to jurisdictional claims in published maps and institutional affiliations.



**Open Access** This article is licensed under a Creative Commons Attribution 4.0 International License, which permits use, sharing, adaptation, distribution and reproduction in any medium or format, as long as you give appropriate credit to the original author(s) and the source, provide a link to the Creative Commons license, and indicate if changes were made. The images or other third party material in this article are included in the article's Creative Commons license, unless indicated otherwise in a credit line to the material. If material is not included in the article's Creative Commons license and your intended use is not permitted by statutory regulation or exceeds the permitted use, you will need to obtain permission directly from the copyright holder. To view a copy of this license, visit <http://creativecommons.org/licenses/by/4.0/>.

© The Author(s) 2023