



HAL
open science

Clinical characteristics and outcome of 318 families with familial monoclonal gammopathy: A multicenter Intergroupe Francophone du Myélome study

Charles Dumontet, Delphine Demangel, Perrine Galia, Lionel Karlin, Laurent Roche, Mathieu Fauvernier, Camille Golfier, Marie-charlotte Laude, Xavier Leleu, Philippe Rodon, et al.

► To cite this version:

Charles Dumontet, Delphine Demangel, Perrine Galia, Lionel Karlin, Laurent Roche, et al.. Clinical characteristics and outcome of 318 families with familial monoclonal gammopathy: A multicenter Intergroupe Francophone du Myélome study. *American Journal of Hematology*, 2023, 98 (2), pp.264-271. 10.1002/ajh.26785 . hal-04385861

HAL Id: hal-04385861

<https://hal.science/hal-04385861v1>






Submitted on 22 Feb 2024

HAL is a multi-disciplinary open access archive for the deposit and dissemination of scientific research documents, whether they are published or not. The documents may come from teaching and research institutions in France or abroad, or from public or private research centers.

L'archive ouverte pluridisciplinaire **HAL**, est destinée au dépôt et à la diffusion de documents scientifiques de niveau recherche, publiés ou non, émanant des établissements d'enseignement et de recherche français ou étrangers, des laboratoires publics ou privés.

RESEARCH ARTICLE

Clinical characteristics and outcome of 318 families with familial monoclonal gammopathy: A multicenter Intergroupe Francophone du Myélome study

Charles Dumontet^{1,2}  | Delphine Demangel¹  | Perrine Galia¹ | Lionel Karlin¹ | Laurent Roche¹ | Mathieu Fauvernier¹ | Camille Golfier¹ | Marie-Charlotte Laude¹  | Xavier Leleu³ | Philippe Rodon⁴ | Murielle Roussel⁵ | Isabelle Azaïs³ | Chantal Doyen⁶ | Borhane Slama⁷ | Salomon Manier⁸ | Olivier Decaux⁹ | Maroulio Pertesi^{10,11} | Marie Beaumont¹² | Denis Caillot¹³ | Eileen M. Boyle¹⁴ | Manuel Cliquennois¹⁵  | Pascale Cony-Makhoul¹⁶ | Anne-Violaine Doncker¹⁷ | Véronique Dorvaux¹⁸ | Marie Odile Petillon¹⁹ | Jean Fontan²⁰ | Bénédicte Hivert¹⁵ | Isabelle Leduc²¹ | Cécile Leyronnas²² | Margaret Macro²³ | Michel Maigre²⁴ | Clara Mariette²⁵ | Philippe Mineur²⁶ | Sophie Rigaudeau²⁷ | Bruno Royer²⁸ | Laure Vincent²⁹ | James Mckay¹⁰ | Emeline Perrial² | Laurent Garderet^{30,31} 

Correspondence

Charles Dumontet, 8 Avenue Rockefeller,
69008 Lyon, France.
Email: charles.dumontet@chu-lyon.fr

Funding information

Fédération Française pour la Recherche contre
le Myélome et les Gammopathies (FFRMG);
Institut National Du Cancer

Abstract

Familial forms of monoclonal gammopathy, defined as multiple myeloma (MM) or Monoclonal Gammopathy of Undetermined Significance (MGUS), are relatively infrequent and most series reported in the literature describe a limited number of families. MM rarely occurs in a familial context. MGUS is observed much more commonly, which can in some cases evolve toward full-blown MM. Although recurrent cytogenetic abnormalities have been described in tumor cells of sporadic cases of MM, the pathogenesis of familial MM remains largely unexplained. In order to identify genetic factors predisposing to familial monoclonal gammopathy, the Intergroupe Francophone du Myélome identified 318 families with at least two confirmed cases of monoclonal gammopathy. There were 169 families with parent/child pairs and 164 families with cases in at least two siblings, compatible with an autosomal transmission. These familial cases were compared with sporadic cases who were matched for age at diagnosis, sex and immunoglobulin isotype, with 10 sporadic cases for each

Where authors are identified as personnel of the International Agency for Research on Cancer/World Health Organization, the authors alone are responsible for the views expressed in this article and they do not necessarily represent the decisions, policy or views of the International Agency for Research on Cancer/World Health Organization.

For affiliations refer to page 269

This is an open access article under the terms of the [Creative Commons Attribution-NonCommercial-NoDerivs](https://creativecommons.org/licenses/by-nc-nd/4.0/) License, which permits use and distribution in any medium, provided the original work is properly cited, the use is non-commercial and no modifications or adaptations are made.

© 2023 The Authors. *American Journal of Hematology* published by Wiley Periodicals LLC.

familial case. The gender distribution, age and immunoglobulin subtypes of familial cases were unremarkable in comparison to sporadic cases. With a median follow-up of 7.4 years after diagnosis, the percentage of MGUS cases having evolved to MM was 3%. The median overall survival of the 148 familial MM cases was longer than that of matched sporadic cases, with projected values of 7.6 and 16.1 years in patients older and younger than 65 years, respectively. These data suggest that familial cases of monoclonal gammopathy are similar to sporadic cases in terms of clinical presentation and carry a better prognosis.

1 | INTRODUCTION

Multiple myeloma (MM) is the second most frequent hematological malignancy after lymphoma, with an estimated annual incidence of 4–6/100000 in the United States.¹ Occurrence of monoclonal gammopathy of undetermined significance (MGUS) is much more frequent, with an increasing incidence in elderly individuals. It has been estimated that up to 2% of patients older than 50 years have a detectable monoclonal component in their serum, with an estimated global risk of evolution to full-blown myeloma of 1% per year.¹ With a median age at diagnosis of 65 years in several series, the normalized incidence was found to be higher in males (sex ratio of 1.5). In a national hospital-based series, we recently reported that the median age at diagnosis in France was 72 years in males and 76 years in females.²

Familial predisposition is considered less frequent in the case of MM in comparison to other hematological malignancies. Kindreds of patients with chronic lymphocytic leukemia (CLL) have an increased risk of bearing clonal B cells. In the case of acute leukemia, there is an increased risk of disease up to three- to five-fold in first- and second-degree relatives. First-degree relatives of patients with Waldenström's disease (WM) have a 20-fold increased risk of developing this disease.³ In a study pooling 11 case-control studies, Schinasi et al. found that the risk of MM was elevated in association with having a first-degree relative with any lymphoproliferative disorder but was more pronounced (OR = 1.90) in patients with a first-degree relative with MM.⁴ Clay-Gilmour et al. reported an increased risk of monoclonal gammopathy in first-degree relatives of patients with MM or MGUS, with a 2.4-fold higher prevalence than expected.⁵ Kristinsson et al. estimated that first-degree relatives of patients with MM had a 2.1 increased risk of developing MM or MGUS.⁶ In a large retrospective analysis of patients with plasma cell disorder, defined as MM, MGUS or AL amyloidosis, Visram et al. found that 2.7% of patients reported having a family member with plasma cell disorder.⁷ These results suggest a shared genetic susceptibility to MM and MGUS, as supported by the fact that the MM polygenic risk score is also associated with the occurrence of MGUS.⁸

To better understand the prevalence and the characteristics of familial monoclonal gammopathy, we initiated a nationwide study of families with at least two cases of monoclonal gammopathy, defined as confirmed myeloma or MGUS (NCT02853214). This ongoing study has presently allowed us to identify 318 families with 837 afflicted family members (median number of 2.5 cases per family, range 2–9). A biological database

has been constituted including peripheral blood cells, serum and establishment of lymphoblastoid cell lines (success rate 92%). This biological resource has allowed us to initiate the identification of candidate genes of predisposition to familial monoclonal gammopathy, with the demonstration that mutations in *DIS3* are likely to be involved in a small number of families.⁹ In the present report, we present a description of the clinical characteristics of this cohort, including relationships between affected family members, disease characteristics and outcome.

2 | PATIENTS AND METHODS

Families with MM were identified in the context of a national prospective program initiated in France in 2007 (PHRC national INCA). Forty-seven centers from the Intergroupe Francophone du Myélome (IFM) participated in the recruitment of index cases. Healthy family members and members with unknown disease status were then solicited. Patients with unknown status underwent serum electrophoresis and immunoelectrophoresis to determine their status. All persons provided signed informed consent and the protocol was approved by the Comité de Protection des Personnes Sud Est IV. While the collection of new cases is still ongoing, the present study contains data on families identified between 2008 and 2019. For survival studies, the 148 patients with familial MM were compared with 1480 case-matched sporadic cases, chosen among a large database constituted by patients included in IFM trials. Sporadic cases were matched for sex, age at diagnosis and immunoglobulin subtype.

Since the primary aim of this project was the identification and characterization of genetic variants predisposing to monoclonal gammopathy in families with at least two cases (defined as myeloma and MGUS) with biological sampling (serum and peripheral blood cells in order to establish lymphoblastoid cell lines), clinical information was gathered retrospectively in a selected subgroup of families, and we did not have access to additional patient characteristics. MGUS was defined by the presence of a quantifiable monoclonal component in serum.

3 | STATISTICS

Descriptive analyses were performed to summarize the characteristics of the MGUS and MM cases (demographics and familial relationships,

monoclonal component, follow-up duration and vital status). Median, minimum and maximum values were computed for quantitative variables, and count and frequency for qualitative ones. In order to determine whether the prognosis of familial cases of MM was different from that of sporadic cases of myeloma, our familial cohort was compared with a large Intergroupe Francophone du Myélome (IFM) cohort of sporadic cases. All statistical analyses were performed using R software, version 4.0.2.¹⁰ To account for potential imbalance in the distribution of the individual's characteristics between the familial and sporadic cohorts, a propensity score matching was performed. The familial 'cases' consisted of 148 individuals with complete data and mainly IgG or IgA heavy chain. The sporadic 'controls' consisted of 6364 individuals with sporadic MM cases with complete data, either IgG or IgA heavy chain, and with age at diagnosis ranging from 35 to 90 years. The propensity score (PS) corresponded to the probability of belonging to familial cases given the value of baseline characteristics. This score was estimated for each familial or sporadic individual, from a penalized, generalized additive model (GAM), using *mgcv* package.¹¹ The logit of the PS was modeled as a function of sex, type of heavy chain, a sex-heavy chain interaction, a penalized spline of age, a penalized spline of the year of diagnosis, an interaction term of age multiplied by a penalized spline of the year of diagnosis, two penalized splines of age modeling the difference of the effect of age between female and male (the reference), and between IgA and IgG (the reference) heavy chain subtype. The splines of age and year were restricted cubic splines with 7 knots (age: based on the quantiles of age; year: evenly spaced between 2000 and 2019). The number of sporadic controls was much larger than that of familial cases, so each familial case was matched to 10 controls without replacement. Greedy matching was performed using calipers of width equal to 0.2 of the standard deviation of the logit of the PS, using the *Matching* package.^{12,13} Following the recommendations made by Austin, the balance of the distribution of the individuals' characteristics, between the two cohorts, was assessed before and after matching in three ways.¹⁴ First, absolute standardized differences, defined as $|\text{mean in cases} - \text{mean in controls}| / \text{standard deviation in cases}$, were computed to compare means or prevalence between the two cohorts. Second, variances were compared, using the ratio of the variance in cases divided by the weighted variance in controls. Third, quantile-quantile plots for age at diagnosis and year of diagnosis were drawn (overall, and by different stratifying variables). After matching, the survival was estimated using the Kaplan-Meier method, and absolute differences in survival between the matched cases and controls were computed using the Kaplan-Meier estimates. The survival curve for familial cases and sporadic controls were compared using a log-rank test that was stratified on the matching 11 uplets, this log-rank test was performed using the *coin* package.^{15,16} Percentile-based confidence intervals were computed based on 10 000 bootstrap samples. Each bootstrap sample was obtained by randomly sampling, with replacement, 148 matching uplets, to account for the dependency of the observations induced by the matching process. Median survival time for a given cohort was estimated by inverting the Kaplan-Meier survival curve.

4 | RESULTS AND DISCUSSION

There are relatively few reports in the literature on familial cases of myeloma. Grosbois et al. reported 15 families.¹⁷ In a review of the literature published in 1995, Crozes-Bony et al. identified 52 previously reported cases of familial myeloma.¹⁸ In a review of the literature, Roddie et al. identified 53 families.¹⁹ Eriksson reported that the risk of being diagnosed with MM was increased 5.6-fold in individuals who had a relative with MM.²⁰ In a large Swedish registry-based study, Altieri et al. found that MM cases tended to be clustered along with cases of CLL and NHL, with a standardized incidence ratio of 2.45.²¹

Over a 11-year period and thanks to the contribution of the AF3M patient advocacy group and the Intergroupe Francophone du Myélome (IFM) clinical trials group, a total of 318 families with at least two confirmed cases of monoclonal gammopathy were identified in France (Figure S1), including 265 individuals with MGUS and 241 patients with MM. As summarized in Table 1, these included 147 families with at least two cases of myeloma, 88 families with at least two cases of MGUS and 116 families with 1 case of MGUS and 1 case of MM. Additionally, this study identified 13 cases with amyloidosis (including 8 amyloidosis cases, 4 cases MM/amyloidosis and 1 case Waldenström/amyloidosis) and 55 cases with Waldenström's disease.

Familial relationships between affected individuals in 318 families are summarized in Table 1. One hundred seventy-five families had at least one parent and one child with monoclonal gammopathy, and 169 families had at least two siblings concerned. Altieri et al. suggested that the pattern of familial MM observed in the Swedish registry was consistent with an autosomal dominant mode of inheritance, in concordance with our observations.²¹ In our families, there were slightly more females with MGUS (54%) and more males with confirmed MM (52%).

Age at diagnosis of MGUS and MM was similar (65.3 and 64.4 years, respectively) in our familial series. Halvarsson et al. found a similar age at diagnosis for familial and sporadic cases of myeloma (66.0 vs. 68.4 years).²² In a report on eight African American families with familial MM, Jain et al. reported a median age at diagnosis of myeloma of 61 years.²³ In our series, there were 175 cases of parent/child pairs. In families with afflicted parents and children, the median ages at diagnosis for MM and MGUS in parents were respectively 73.5 years (80.5 years in males and 72.5 years in females) and 81 years (79.5 years in males and 84 years in females), while the median ages in children were 56 years (55.5 years in males and 56 years in females) and 58 years (56 years in males and 60 years in females). Our observations were thus consistent with a study from Deshpande et al. who observed that the onset of plasma cell dyscrasias tended to occur at a younger age in second-generation cases (50 vs. 71 years).²⁴

Data were available concerning the type of monoclonal component for 453 index cases (208 MM and 245 MGUS) with a majority of IgG components (69% of MM cases and 59% of MGUS cases). The light chain component was kappa in 70% of all MM cases and in 59% of all MGUS cases. Fourteen percent of all MM cases were light chain

TABLE 1 Familial relationships of index cases in 318 families with at least two cases of monoclonal gammopathy

	All families	≥2 cases MM	≥2 cases MGUS	Other (1 MM + 1 MGUS)	>1 case WM + other	>2 cases WM	Amyloidosis and 1 case MM/MGUS
Parent/child	175	63	27	48	16	15	6
Siblings	169	50	41	47	14	12	5
Cousins/uncles	31	14	6	8	1	2	0
Other	54	20	14	13	4	2	1
Total		147	88	116	35	31	12

TABLE 2 Diseases associated with familial monoclonal gammopathy

Disease	MM	MGUS	Other family members
Neoplasia			
Prostate cancer	2	1	1
Pheochromocytoma	1	0	0
Pancreatic cancer	0	0	5
Ovarian cancer	0	0	1
Breast cancer	3	2	6
Bladder cancer	0	1	1
Lung cancer	0	1	2
Stomach cancer	0	0	2
Colorectal cancer	1	1	2
Melanoma	1	0	0
Esophageal cancer	0	0	1
Mesothelioma	0	0	2
Uterine cancer	0	0	1
NHL	1	0	1
PV	0	1	0
CLL	1	0	1
AML	0	0	2
MDS	2	0	0
Autoimmune/inflammatory disease			
Basedow	1	0	0
Crohn's disease	0	0	1
RA	0	2	0
DLE	1	0	0

Abbreviations: AML, acute myeloid leukemia; CLL, chronic lymphocytic leukemia; DLE, diffuse lupus erythematosus; MDS, myelodysplastic syndrome; NHL, non-Hodgkin's lymphoma; PV, polycythemia vera; RA, rheumatoid arthritis.

disease. Only two exclusively light chain components were identified among MGUS cases, but this is probably an underestimation since not all patients underwent urine analyses or determination of serum-free light chains. Twenty-six percent of MGUS cases were IgM components. Overall, the characteristics of the monoclonal components in familial cases were unremarkable in comparison to sporadic cases.

Associated diseases were observed in patients with familial gammopathy and are listed in Table 2. Nonhematological cancers were identified in 8 cases of patients with MM, 6 cases of patients with MGUS and 24 other family members. These data do not show any

evidence of increased risk of associated neoplasia but are likely to be underestimated as they were obtained by declaration of one of the family members. Altieri et al. identified associations between familial cases of myeloma and rectal, stomach, cervical, prostate, bladder, endocrine glands and connective tissue malignancies.²¹ Frank et al. reported that sporadic cases of MM were reliably associated with the presence in a first-degree relative of colorectal, breast and prostate cancers, nonthyroid endocrine tumors, leukemia and cancer of unknown primary.²⁵ Grufferman et al. performed a study of family history of central nervous system diseases in a case-control study of

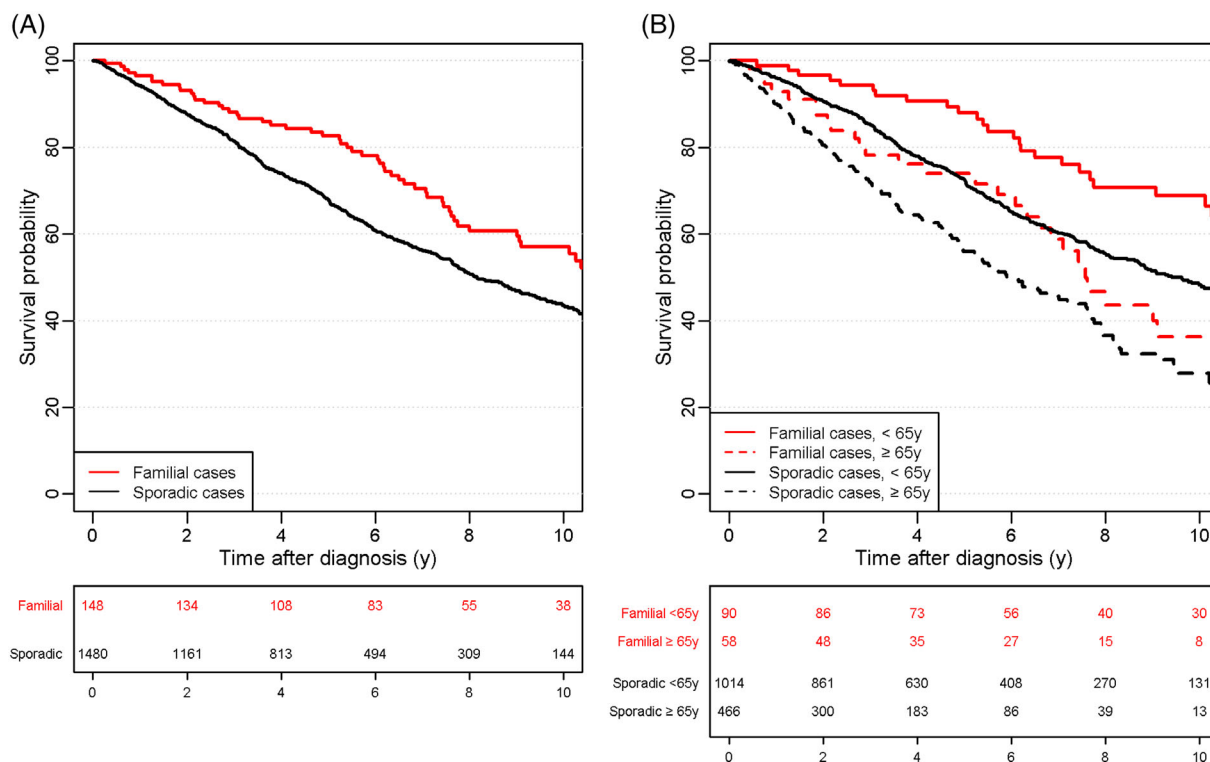


FIGURE 1 Overall survival curves of the 148 patients with familial forms of multiple myeloma (MM) and the 1480 case-matched sporadic controls with MM. (A) All patients, (B) according to age. [Color figure can be viewed at wileyonlinelibrary.com]

sporadic MM and observed a 4.4 relative risk of degenerative or demyelinating central nervous system disease in first-degree relatives of myeloma patients.²⁶ Lynch et al. reported a family with five cases of MM, three cases of monoclonal gammopathy of undetermined significance (MGUS) and five cases of prostate cancer in two generations.²⁷ Chang et al. reported an increased risk of follicular lymphoma in patients with familial myeloma.²⁸

With a median follow-up of 7.42 years since diagnosis, 14 of the 265 MGUS patients (5.3%) evolved from MGUS status to a confirmed diagnosis of hematological malignancy with 8 cases of MM (3%), 4 cases of NHL, 1 case of WM and 1 case of amyloidosis. The median age of MGUS patients who evolved was 62 years (range 45–87 years). Visram et al. reported a higher risk of progression to a plasma cell or a lymphoproliferative disorder in familial versus nonfamilial MGUS cases in spite of a 50% lower risk of death in familial MGUS patients. During follow-up, 23 patients (9.7%) of the patients in our series with MGUS died, including 12 who died at an age greater than 85. With a median follow-up of 6 years after diagnosis, 91 patients of the 241 MM patients (37.8%) had died, including 80 who died as a result of their disease. The results from the survival analyses that are presented hereafter were obtained using the data obtained from the 148 familial cases of MM and from the 1480 case-matched sporadic controls of MM (characteristics provided in Table S1). Overall survival time was found to be longer in the 148 familial MM cases than in the 1480 case-matched sporadic MM cases (Figure 1A, $p = .0017$). Median survival times were 11.3 and 8.2 years and 5-year survivals (95% confidence interval) were 82.6%

(76.0%–88.7%) and 68% (65.2%–70.5%), for familial and sporadic MM cases, respectively. In patients aged under 65 years at diagnosis (Figure 1B), median survival times were 16.1 and 9.4 years and 5-year survivals were 88.0% (80.3%–94.7%) and 72.6% (69.8%–75.3%), respectively. In MM patients aged 65 years and over, median survival times were 7.6 and 5.9 years and 5-year survivals were 73.9% (61.6%–85.7%) and 56% (50%–61.4%), respectively. Differences in 5-year survival familial versus sporadic MM cases were +15.3% (+7.5%–22.4%) for patients aged under 65 years and +18.0% (+5.7%–30.4%) for patients aged 65 years and over, showing that 5-year survival was greater for the familial MM cases than for the sporadic ones, whatever the age class. Overall, these data suggest that familial cases of MM are similar to sporadic cases in terms of age of onset with a better prognosis than sporadic cases. This result is in contrast to those reported in Waldenström's macroglobulinemia in which familial forms have been reported to carry a worse prognosis than sporadic forms²⁹ but is in keeping with the observation reported by Visram et al.⁷ In solid tumors, the impact of a familial versus a sporadic form appears to be highly dependent on the tumor type.^{30–32}

Familial predisposition to monoclonal gammopathy remains largely unexplained. Grass et al. studied the status of Paratarg-7, a target for monoclonal proteins in various types of lymphoid malignancies.³³ They found that paraproteins of affected members with familial MGUS/MM share family-typical hyperphosphorylated antigens. Halvarsson et al. analyzed 38 familial cases of myeloma for known sporadic MM risk alleles and observed risk alleles at CCAT1, suggesting a polygenic etiology for these familial cases.²² Genetic

predisposition to myeloma has been studied using GWAS approaches. Performing a meta-analysis of two GWAS studies, Morgan et al. identified SNPs robustly associated with MM risk.³⁴ Analysis of these SNPs in patients with MGUS showed that each SNP independently increased the risk of occurrence of MGUS, suggesting that MGUS occurrence is likely to be polygenic.³⁵ Went et al. identified 24 risk variants estimated to explain 16% of heritability of MM.³⁶ Clay-Gilmour et al. found that the 23 gene polygenic risk score developed for MM was similarly associated with MGUS, independently of age, sex or immunoglobulin isotype.⁸ Using a GWAS approach Li et al. observed that a genetic variation at 5q15 was associated with an increased hereditary risk of MM and suggested that this could be linked to a reduced expression of ELL2, a critical factor involved in B cell differentiation, associated with increased ribosomal gene expression.^{37,38} Collectively variants identified by GWAS explain approximately 15% of familial risk.^{39,40} We have recently shown that germline variants of Dis3, a gene previously found to be somatically mutated in approximately 12% cases of sporadic myeloma,⁴¹ were identified in 2.6% of families with multiple cases of monoclonal gammopathy.⁹ Additionally, familial cases may be due to exposure to common causative agents in the environment. In the case of myeloma, extensive analyses of environmental toxins have not conclusively shown the role of vinyl chloride,⁴² dioxin,⁴³ diesel,⁴⁴ alachlor⁴⁵ and benzene.⁴⁶ In our series, we did not have access to data regarding potential environmental factors.

Familial monoclonal gammopathy represents a small minority of all cases of monoclonal gammopathy. While our study was not designed to exhaustively identify all cases in France over the study period, the participation of a large majority of treatment centers thanks to the IFM group has identified an approximate number of 30 new families with monoclonal gammopathy each year, to be compared with over 6000 new cases of MM overall. Our results suggest that the biological and clinical characteristics of familial cases are similar to those of sporadic cases and in particular that the evolution and prognosis of familial cases are more favorable than that of sporadic cases. Importantly, this is in keeping with a similar observation recently published by Visram et al., showing that a familial history of plasma cell disorders was associated with improved survival in patients with MGUS, MM and systemic AL amyloidosis.⁷ In this large retrospective analysis, the crude hazard ratio for overall survival was 0.52 (95% CI 0.40–0.67) with a median survival for familial MM patients of 9.2 years as compared with 5.8 years in non-familial cases. Currently available data provide possible genetic predisposition hypotheses for a minority of all familial cases and additional collaborative studies on large cohorts are required to better understand the determinants of this disease.

AUTHOR CONTRIBUTIONS

All authors have read and approved this manuscript.

Charles Dumontet participated in the design of the study, data analysis, obtaining funding and writing the manuscript. Delphine Demangel, Perrine Massot and Emeline Perrial participated in patient accrual, obtaining and processing clinical data. Lionel Karlin, Camille Golfier, Marie-Charlotte Laudé, Xavier Leleu, Philippe Rodon, Murielle

Roussel, Isabelle Azaïs, Chantal Doyen, Borhane Slama, Salomon Manier, Olivier Decaux, Marie Beaumont, Denis Caillot, Manuel Cliquennois, Pascale Cony-Makhoul, Anne-Violaine Doncker, Véronique Dorvaux, Jean Fontan, Bénédicte Hivert, Isabelle Leduc, Cécile Leyronnas, Margaret Macro, Michel Maigre, Clara Mariette, Philippe Mineur, Sophie Rigaudeau, Bruno Royer and Laure Vincent participated in patient accrual. Laurent Roche and Mathieu Fauvernier performed the case-control analysis. Maroulio Pertesi, James McKay and Laurent Garderet participated in the design of the study, data analysis and writing of the manuscript.

AFFILIATIONS

¹Hospices Civils de Lyon, Lyon, France

²CRCL, UMR INSERM 1052/CNRS 5286/University of Lyon-France, Lyon, France

³Hematology Department, CHU Poitiers, Poitiers, France

⁴Hematology Department, CH Périgueux, Périgueux, France

⁵IUC-Oncopôle, Toulouse, France

⁶UCL Mont-Godinne, Louvain, Belgium

⁷Clinical Hematology Department, CH Avignon, Avignon, France

⁸Hematology Department, CHRU, Lille, France

⁹Hematology Department, CHU Rennes, Inserm UMR1236, Rennes, France

¹⁰Genetic Cancer Susceptibility, International Agency for Research on Cancer, Lyon, France

¹¹Department of Laboratory Medicine, Hematology and Transfusion Medicine, Lund, Sweden

¹²Hematology Department, CHU Dunkerque, Dunkerque, France

¹³Clinical Hematology Department, Hôpital F. Mitterrand, CHU Dijon, Dijon, France

¹⁴Perlmutter Cancer Center, NYU Langone Health, New York, New York, USA

¹⁵Hospitals Organization of Catholic Institute, Lille, France

¹⁶CH Annecy Genevois, Pringy, France

¹⁷Private Hospital Sévigné, Cesson-Sévigné, France

¹⁸Clinical Hematology Department, CHR Metz-Thionville, Metz-Thionville, France

¹⁹Intergroupe Francophone du Myélome, France

²⁰Hematology Department, CHU Besançon, Besançon, France

²¹Hematology Department, CH d'Abbeville, Abbeville, France

²²Daniel Hollard Institute-GHM-Grenoble, Grenoble, France

²³Hematology Department, CHU Caen, Caen, France

²⁴Internal Medicine Department, CH Chartres, Chartres, France

²⁵Hematology Department, CHU Grenoble, Grenoble, France

²⁶Clinical Hematology Department, Grand Hôpital de Charleroi, Charleroi, Belgium

²⁷Hematology Department, CH Versailles, Versailles, France

²⁸Clinical Hematology and Cell Therapy Department, Amiens, France

²⁹Clinical Hematology Department, CHU Montpellier, France

³⁰HU PITIE SALPETRIERE APHP, Paris, France

³¹Centre de Recherche Saint-Antoine-Team Hematopoietic and Leukemic Development, Sorbonne Université-INSERM, UMR_S 938, Paris, France

FUNDING INFORMATION

This work was supported by the French National Cancer Institute (INCA), Intergroupe Francophone du Myélome (IFM), the Fédération Française pour la Recherche contre le Myélome et les Gammopathies (FFRMG) and we warmly thank the Association Française des Malades du Myélome Multiple (AF3M) for their active participation in the accrual of families.

CONFLICT OF INTEREST

None of the authors have any disclosures.

DATA AVAILABILITY STATEMENT

Data available on request due to privacy/ethical restrictions

ORCID

Charles Dumontet  <https://orcid.org/0000-0003-1875-134X>

Delphine Demangel  <https://orcid.org/0000-0001-6550-2827>

Marie-Charlotte Laude  <https://orcid.org/0000-0001-9967-706X>

Manuel Cliquennois  <https://orcid.org/0000-0002-4544-7661>

Laurent Garderet  <https://orcid.org/0000-0002-6138-8112>

REFERENCES

- Kyle RA, Therneau TM, Rajkumar SV, Larson DR, Plevak MF, Melton LJ 3rd. Incidence of multiple myeloma in Olmsted County, Minnesota: trend over 6 decades. *Cancer*. 2004;101(11):2667-2674.
- Dumontet C, Couray-Targe S, Teisseire M, Karlin L, Maucort-Boulch D. Real life management of patients hospitalized with multiple myeloma in France. *PLoS One*. 2018;13(5):e0196596.
- Kristinsson SY, Bjorkholm M, Goldin LR, McMaster ML, Turesson I, Landgren O. Risk of lymphoproliferative disorders among first-degree relatives of lymphoplasmacytic lymphoma/Waldenstrom macroglobulinemia patients: a population-based study in Sweden. *Blood*. 2008;112(8):3052-3056.
- Schinasi LH, Brown EE, Camp NJ, et al. Multiple myeloma and family history of lymphohaematopoietic cancers: results from the international multiple myeloma consortium. *Br J Haematol*. 2016;175(1):87-101.
- Vachon CM, Kyle RA, Therneau TM, et al. Increased risk of monoclonal gammopathy in first-degree relatives of patients with multiple myeloma or monoclonal gammopathy of undetermined significance. *Blood*. 2009;114(4):785-790.
- Kristinsson SY, Bjorkholm M, Goldin LR, et al. Patterns of hematologic malignancies and solid tumors among 37,838 first-degree relatives of 13,896 patients with multiple myeloma in Sweden. *Int J Cancer*. 2009;125(9):2147-2150.
- Visram A, Vachon C, Baughn LB, et al. Family history of plasma cell disorders is associated with improved survival in MGUS, multiple myeloma, and systemic AL amyloidosis. *Leukemia*. 2021;36:1058-1065.
- Clay-Gilmour AI, Hildebrandt MAT, Brown EE, et al. Coinherited genetics of multiple myeloma and its precursor, monoclonal gammopathy of undetermined significance. *Blood Adv*. 2020;4(12):2789-2797.
- Pertesi M, Vallee M, Wei X, et al. Exome sequencing identifies germline variants in DIS3 in familial multiple myeloma. *Leukemia*. 2019;33(9):2324-2330.
- Team RC. *A Language and Environment for Statistical Computing*. R Foundation for Statistical Computing. <https://www.R-project.org/>; 2020.
- Wood SN. *Generalized Additive Models: An Introduction with R*. Chapman and Hall/CRC; 2017.
- Austin PC. Optimal caliper widths for propensity-score matching when estimating differences in means and differences in proportions in observational studies. *Pharm Stat*. 2011;10:150-161.
- Sekhorn JS. Multivariate and propensity score matching software with automated balance optimization: the matching package for R. *J Stat Softw*. 2011;42(7):1-52.
- Austin PC. A tutorial and case study in propensity score analysis: an application to estimating the effect of in-hospital smoking cessation counseling on mortality. *Multivar Behav Res*. 2011;46(1):119-151.
- Austin PC. The use of propensity score methods with survival or time-to-event outcomes: reporting measures of effect similar to those used in randomized experiments. *Stat Med*. 2014;33(7):1242-1258.
- Hothorn T, Hornik K, van de Wiel MA, Zeileis A. Implementing a class of permutation tests: the coin package. *J Stat Softw*. 2008;28(8):1-23.
- Grosbois B, Jegou P, Attal M, et al. Familial multiple myeloma: report of fifteen families. *Br J Haematol*. 1999;105(3):768-770.
- Crozes-Bony P, Palazzo E, Meyer O, De Bandt M, Kahn MF. Familial multiple myeloma. Report of a case in a father and daughter. Review of the literature. *Rev Rhum Engl ed*. 1995;62(6):439-445.
- Roddie PH, Dang R, Parker AC. Multiple myeloma in three siblings. *Clin Lab Haematol*. 1998;20(3):191-193.
- Eriksson M, Hallberg B. Familial occurrence of hematologic malignancies and other diseases in multiple myeloma: a case-control study. *Cancer Causes Control*. 1992;3(1):63-67.
- Altieri A, Chen B, Bermejo JL, Castro F, Hemminki K. Familial risks and temporal incidence trends of multiple myeloma. *Eur J Cancer*. 2006;42(11):1661-1670.
- Halvarsson BM, Wihlborg AK, Ali M, et al. Direct evidence for a polygenic etiology in familial multiple myeloma. *Blood Adv*. 2017;1(10):619-623.
- Jain M, Ascensao J, Schechter GP. Familial myeloma and monoclonal gammopathy: a report of eight African American families. *Am J Hematol*. 2009;84(1):34-38.
- Deshpande HA, Hu XP, Marino P, Jan NA, Wiernik PH. Anticipation in familial plasma cell dyscrasias. *Br J Haematol*. 1998;103(3):696-703.
- Frank C, Fallah M, Chen T, et al. Search for familial clustering of multiple myeloma with any cancer. *Leukemia*. 2016;30(3):627-632.
- Grufferman S, Cohen HJ, Delzell ES, Morrison MC, Schold SC Jr, Moore JO. Familial aggregation of multiple myeloma and central nervous system diseases. *J Am Geriatr Soc*. 1989;37(4):303-309.
- Lynch HT, Ferrara K, Barlogie B, et al. Familial myeloma. *N Engl J Med*. 2008;359(2):152-157.
- Chang ET, Smedby KE, Hjalgrim H, et al. Family history of hematopoietic malignancy and risk of lymphoma. *J Natl Cancer Inst*. 2005;97(19):1466-1474.
- Steingrimsdottir V, Lund SH, Turesson I, et al. Population-based study on the impact of the familial form of Waldenström macroglobulinemia on overall survival. *Blood*. 2015;125(13):2174-2175.
- Roehl KA, Loeb S, Antenor JA, Corbin N, Catalona WJ. Characteristics of patients with familial versus sporadic prostate cancer. *J Urol*. 2006;176(6 Pt 1):2438-2442. discussion 2442.
- Lee M, Reilly M, Lindstrom LS, Czene K. Differences in survival for patients with familial and sporadic cancer. *Int J Cancer*. 2017;140(3):581-590.
- Fang WL, Chang SC, Lan YT, et al. Molecular and survival differences between familial and sporadic gastric cancers. *Biomed Res Int*. 2013;2013:396272.
- Grass S, Preuss KD, Thome S, et al. Paraproteins of familial MGUS/multiple myeloma target family-typical antigens: hyperphosphorylation of autoantigens is a consistent finding in familial and sporadic MGUS/MM. *Blood*. 2011;118(3):635-637.

34. Morgan GJ, Johnson DC, Weinhold N, et al. Inherited genetic susceptibility to multiple myeloma. *Leukemia*. 2014;28(3):518-524.
35. Weinhold N, Johnson DC, Rawstron AC, et al. Inherited genetic susceptibility to monoclonal gammopathy of unknown significance. *Blood*. 2014;123(16):2513-2517.
36. Went M, Sud A, Forsti A, et al. Identification of multiple risk loci and regulatory mechanisms influencing susceptibility to multiple myeloma. *Nat Commun*. 2018;9(1):3707.
37. Li N, Johnson DC, Weinhold N, et al. Genetic predisposition to multiple myeloma at 5q15 is mediated by an ELL2 enhancer polymorphism. *Cell Rep*. 2017;20(11):2556-2564.
38. Ali M, Ajore R, Wihlborg AK, et al. The multiple myeloma risk allele at 5q15 lowers ELL2 expression and increases ribosomal gene expression. *Nat Commun*. 2018;9(1):1649.
39. Chubb D, Weinhold N, Broderick P, et al. Common variation at 3q26.2, 6p21.33, 17p11.2 and 22q13.1 influences multiple myeloma risk. *Nat Genet*. 2013;45(10):1221-1225.
40. Mitchell JS, Li N, Weinhold N, et al. Genome-wide association study identifies multiple susceptibility loci for multiple myeloma. *Nat Commun*. 2016;7:12050.
41. Weissbach S, Langer C, Puppe B, et al. The molecular spectrum and clinical impact of DIS3 mutations in multiple myeloma. *Br J Haematol*. 2015;169(1):57-70.
42. Heineman EF, Olsen JH, Pottern LM, Gomez M, Raffn E, Blair A. Occupational risk factors for multiple myeloma among Danish men. *Cancer Causes Control*. 1992;3(6):555-568.
43. Bertazzi A, Pesatori AC, Consonni D, Tironi A, Landi MT, Zocchetti C. Cancer incidence in a population accidentally exposed to 2,3,7,8-tetrachlorodibenzo-para-dioxin. *Epidemiology*. 1993;4(5):398-406.
44. Lee WJ, Baris D, Jarvholm B, Silverman DT, Bergdahl IA, Blair A. Multiple myeloma and diesel and other occupational exposures in Swedish construction workers. *Int J Cancer*. 2003;107(1):134-138.
45. Lee WJ, Hoppin JA, Blair A, et al. Cancer incidence among pesticide applicators exposed to alachlor in the Agricultural Health Study. *Am J Epidemiol*. 2004;159(4):373-380.
46. Sonoda T, Nagata Y, Mori M, Ishida T, Imai K. Meta-analysis of multiple myeloma and benzene exposure. *J Epidemiol*. 2001;11(6):249-254.

SUPPORTING INFORMATION

Additional supporting information can be found online in the Supporting Information section at the end of this article.

How to cite this article: Dumontet C, Demangel D, Galia P, et al. Clinical characteristics and outcome of 318 families with familial monoclonal gammopathy: A multicenter Intergroupe Francophone du Myélome study. *Am J Hematol*. 2023;98(2):264-271. doi:[10.1002/ajh.26785](https://doi.org/10.1002/ajh.26785)