



HAL
open science

Comparing Self-Healing Properties of Polarized Weakly-Diffracting Beams

Ravel C. M. Pimenta, Gabriel Soriano, Konstantinos D Paschaloudis, Mauro Ettorre, Myriam Zerrad, Claude Amra

► **To cite this version:**

Ravel C. M. Pimenta, Gabriel Soriano, Konstantinos D Paschaloudis, Mauro Ettorre, Myriam Zerrad, et al.. Comparing Self-Healing Properties of Polarized Weakly-Diffracting Beams. 2023 IEEE Conference on Antenna Measurements and Applications (CAMA 2023), Nov 2023, Gênes, Italy. 10.1109/cama57522.2023.10352856 . hal-04385146

HAL Id: hal-04385146

<https://hal.science/hal-04385146v1>

Submitted on 14 Mar 2024

HAL is a multi-disciplinary open access archive for the deposit and dissemination of scientific research documents, whether they are published or not. The documents may come from teaching and research institutions in France or abroad, or from public or private research centers.

L'archive ouverte pluridisciplinaire **HAL**, est destinée au dépôt et à la diffusion de documents scientifiques de niveau recherche, publiés ou non, émanant des établissements d'enseignement et de recherche français ou étrangers, des laboratoires publics ou privés.

Comparing Self-Healing Properties of Polarized Weakly-Diffracting Beams

Ravel C. M. Pimenta*, Gabriel Soriano*, Konstantinos D. Paschaloudis†,
Mauro Ettore†, Myriam Zerrad*, Claude Amra*,

*Aix Marseille Univ, CNRS, Centrale Marseille, Institut Fresnel,
Marseille, France, pimenta@fresnel.fr

†Univ Rennes, CNRS, IETR (Institut d'Électronique et des Technologies du numéRique)-UMR 6164,
F-35000 Rennes, France, mauro.ettore@univ-rennes1.fr

Abstract—In this work, the self-healing properties of radially and linearly polarized weakly-diffractive beams are compared. The so-called self-healing degree is used as a metric. The studied system is composed of a circular radiating aperture and its radiated fields are perturbed by a circular metallic disk. The analysis is conducted by employing a spectral Green's function approach and a Physical Optics framework to investigate the impact of different obstacle positions and sizes.

Index Terms—component, formatting, style, styling, insert

I. INTRODUCTION

Bessel beams [1] are electromagnetic beams that do not undergo diffraction while propagating in free space. These beams, mathematically described by Bessel functions, can be understood as the combination of plane waves with wavevectors lying on a cone [2]. Additionally, Bessel beams present the property of reconstructing their initial intensity profile after encountering an obstacle, a property known as self-healing [3].

In real life scenarios, weakly-diffractive Bessel beams are generated using finite apertures, which limit their non-diffractive behavior to a defined range, known as the non-diffractive range (NDR). The NDR is situated within the Fresnel region [2] and the self-healing property is also verified within this region. Examples of a Bessel beam launchers were reported in [2], [4].

This research investigates polarized weakly-diffractive Bessel beams radiated by circular apertures, in the case of partial obstruction. Different obstacle positions are considered to provide a comprehensive assessment. The studied vector weakly-diffractive beams [5] have two different polarizations: linear and radial. Considering the coordinate system (x, y, z) and $\rho = \sqrt{x^2 + y^2}$, the linearly and the radially polarized field distributions over the apertures can be written as equations 1 and 2, respectively [6]:

$$\vec{E}(\rho, z = 0) = -iBk_1J_0(k_1\rho)\hat{x} - B\frac{k_1^2}{k_z}J_1(k_1\rho)\hat{z} \quad (1)$$

$$\vec{E}(\rho, z = 0) = i2Ak_1J_1(k_1\rho)\hat{\rho} - A\frac{k_1^2}{k_z}J_0(k_1\rho)\hat{z} \quad (2)$$

where \vec{E} is the electric field, J_n is the Bessel function of first kind and n -th order, k_1 is the transverse propagation constant, and A and B are arbitrary amplitude coefficients.

It is assumed that the beams are transverse magnetic with respect to the z coordinate (TM _{z}).

II. THEORETICAL DEVELOPMENT

A system composed of one radiating aperture and a circular metallic disk is our object of study. The obstacle is placed parallel to the source and our analysis will be restricted to the components of the field that are transverse to the direction of propagation. The problem is analyzed resorting to a scattered-field formulation [5]. Therefore, we divide the fields in three categories: incident (\vec{E}^{in}), scattered (\vec{E}^s), and total (\vec{E}^{tot}). While the incident fields are radiated by the apertures with the obstacle absent, the scattered fields are the ones radiated by the currents over the obstacle surface radiating in free space. The total fields are then defined as the sum of incident and scattered fields. Furthermore, the currents induced over the obstacle surface due to the source are derived using a Physical Optics approach [7]. We use the equivalence theorem and image principle to derive the currents over the radiating aperture [8]. The radiated fields, both incident and scattered, are derived using a spectral free space Green function approach [9].

To evaluate the self-reconstruction properties, we employ the self-healing degree as a metric. Aiello et al. [3] were the first to propose a degree of self-healing as a means to quantify the self-reconstruction ability of general beams. In their publication, this metric was used to evaluate the self-reconstruction properties of a Gaussian beam. This approach involves comparing the amplitudes of the original beam with those of the obstructed one, rather than comparing their intensities. This degree, denoted as D_{sh} , can be understood as a relative distance between the incident and total fields in a defined region, S . This region is limited by the obstacle dimensions and lies on the plane transverse to the direction of propagation. The self-healing degree is written as:

$$D_{sh} = 1 - \frac{\|E_t^{in} - E_t^{tot}\|}{\|E_t^{in}\| + \|E_t^{tot}\|} \quad (3)$$

$$\|f\| = \left(\int_S f^*(x, y, z)f(x, y, z) dS \right)^{1/2} \quad (4)$$

where the subscript t indicates the tangential component.

III. NUMERICAL RESULTS

The source center is positioned on the origin of the coordinate system and the obstruction is placed parallel to the source. The formulation used is frequency independent. The dimensions of the problem are expressed in terms of the wavelength (λ) and the aperture radius is set to 25λ . We define case A as the one in which the aperture radiates a linearly polarized beam while case B is the one related to the radially polarized one. For each case, the obstacle is placed at different positions, whether axially aligned with the radiating apertures or not. Note that the transverse propagation constant is selected to minimize diffraction [10]. As a result, k_1 in case A is different from k_1 in case B.

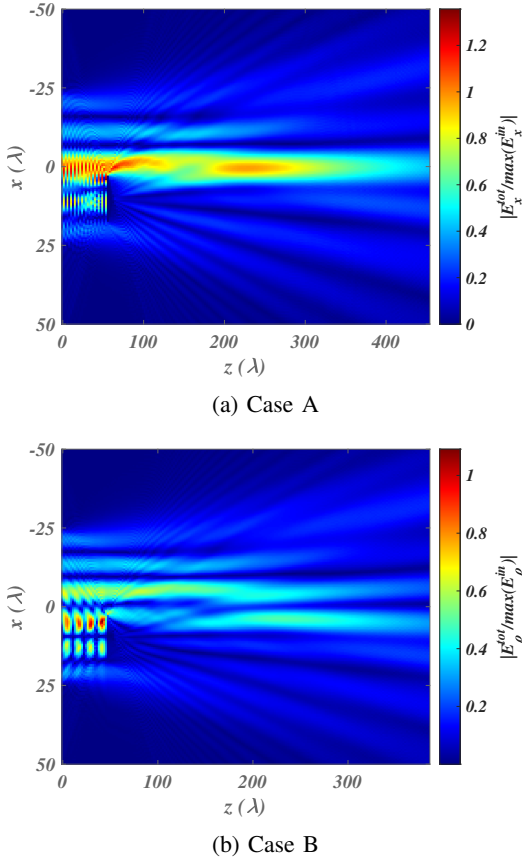


Fig. 1: Amplitude of the normalized total electric field propagating along z in arbitrary units. The fields are normalized by the maximum amplitude of the incident field. The obstruction is placed at $(x = 10\lambda, y = 0, z = 57\lambda)$, the chosen aperture radius is 25λ , and the NDR is 453λ for (a) and 385λ for (b).

The total electric fields along z in both cases is shown in Fig. 1, where we notice a shadow region immediately after the obstruction. The minimum distance required for the beam to reconstruct itself is known as the shadow distance [11]. The self-healing degree as functions of the obstacle radius and the distance of its center from the z -axis is depicted on Fig. 2, where r_o is the obstruction radius and r_a is the aperture

radius. The self-healing degree is evaluated at $z = 226.5\lambda$ and $z = 453\lambda$ for cases A and B.

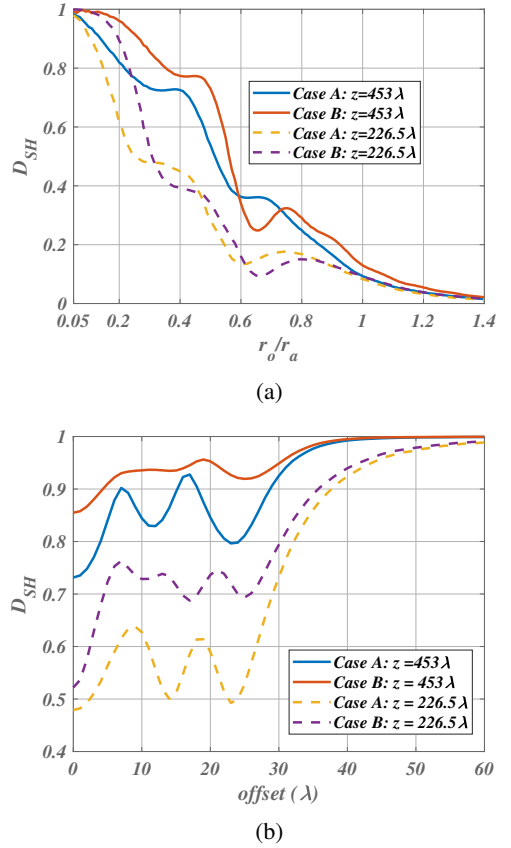


Fig. 2: Self-healing degree relation to the obstacle radius (r_o) and the distance of the obstacle's center to the z -axis is depicted in (a) and (b) respectively. In both cases, the obstacle is placed at $z = 113\lambda$ and the self-healing degree is evaluated at $z = 226.5\lambda$ (dashed line) and at $z = 453\lambda$ (solid line). The chosen aperture radius, r_a , is 25λ .

In Fig. 2a, the obstacle is axially aligned to the aperture and placed $z = 113\lambda$. We observe that the self-healing degree decreases as the obstruction size increases. Case B exhibits a higher self-healing degree when compared to A considering the same evaluation distance. This is not valid only for $0.6r_a \leq r_o \leq 0.85r_a$ at $z = 226.5\lambda$, and $0.6r_a \leq r_o \leq 0.7r_a$ at $z = 453\lambda$.

In Fig. 2b, the obstacle is placed $z = 113\lambda$ and we evaluate its impact on self-healing degree as a function of its distance from the z -axis (offset), with $r_o = 0.3r_a$. We observe that, again, Case B exhibits a superior self-healing degree when compared to case A when evaluated at the same distance. Furthermore, there is a common region for both cases, ranging from $5\lambda \leq \text{offset} \leq 25\lambda$, where the self-healing degree shows an oscillatory behavior.

IV. CONCLUSION

We have reported the evaluation of the self-healing degree of TM_z linear and radially polarized weakly-diffracting vector

beams, studying their response to obstacle radius and distance from the z -axis. As expected, larger obstacles reduced self-healing, while increasing the offset generally improved it, though with oscillations for offsets between 15λ and 25λ . Finally, it's worth mentioning that radial polarization demonstrated a higher self-healing degree in the situations we considered.

V. ACKNOWLEDGMENT

Research funded by the National Research Agency (ANR) LinkAll (ANR-21-CE25-0014) project.

REFERENCES

- [1] J. Durnin, "Exact solutions for nondiffracting beams. I. The scalar theory," *J. Opt. Soc. Am. A.*, vol. 4, no. 4, pp. 651-654, Apr. 1987.
- [2] M. Ettore and A. Grbic, "Generation of Propagating Bessel Beams Using Leaky-Wave Modes," *IEEE Trans. Antennas Propag.*, vol. 60, no. 8, pp. 3605-3613, Aug. 2012.
- [3] Andrea Aiello, Girish S. Agarwal, Martin Paúr, Bohumil Stoklasa, Zdeněk Hradil, Jaroslav Řeháček, Pablo de la Hoz, Gerd Leuchs, and Luis L. Sánchez-Soto, "Unraveling beam self-healing," *Opt. Express* 25, pp. 19147-19157, Aug. 2017.
- [4] S. C. Pavone, M. Ettore, M. Casaletti, and M. Albani, "Transverse circular-polarized Bessel beam generation by inward cylindrical aperture distribution," *Opt. Express*, vol. 24, no. 10, pp. 11103-11111, May. 2016.
- [5] R. C. M. Pimenta, G. Soriano, K. D. Paschaloudis, M. Ettore, M. Zerrad and C. Amra, "Self-Healing Analysis of Distorted Weakly-Diffracting Vector Beams," 17th EuCAP, pp. 1-3, 2023.
- [6] Z. Bouchal and M. Olivik, "Non-diffractive vector Bessel beams", *Journ. Mod. Opt.*, vol. 42, no. 8, pp. 1555-1566, 1995.
- [7] R. F. Harrington, *Time-harmonic Electromagnetic Fields*, 2nd ed., USA: Wiley-IEEE Press, 2001.
- [8] G. Borgiotti, "Maximum power transfer between two planar apertures in the Fresnel zone," in *IEEE Transactions on Antennas and Propagation*, vol. 14, no. 2, pp. 158-163, March 1966
- [9] D. Cavallo, "Connected array antennas : analysis and design," Ph.D. dissertation, TU/e, Eindhoven, 2011.
- [10] F. Alsolamy, W. A. Alomar, and A. Grbic, "Cylindrical vector beams for wireless power transfer," *IEEE Trans. Antennas Propag.*, vol. 69, no. 3, pp. 1716-1727, March 2021.
- [11] D. McGloin and K. Dholakia, "Bessel beams: diffraction in a new light," *Contemporary Physics*, 46, pp. 15-28, 2005