



**HAL**  
open science

## Glacier-wide summer surface mass-balance calculation : hydrological balance applied to the Argentière and Mer de Glace drainage basins (Mont Blanc)

Alessandra Viani, C. Vincent, Antoine Rabatel, B. Bacchi, J. Revuelto, D. Six, I. Zin, Thomas Condom, Jean-Emmanuel Sicart

### ► To cite this version:

Alessandra Viani, C. Vincent, Antoine Rabatel, B. Bacchi, J. Revuelto, et al.. Glacier-wide summer surface mass-balance calculation : hydrological balance applied to the Argentière and Mer de Glace drainage basins (Mont Blanc). *Journal of Glaciology*, 2018, 64 (243), pp.119 - 131. 10.1017/jog.2018.7. hal-04381107

**HAL Id: hal-04381107**

**<https://hal.science/hal-04381107>**

Submitted on 9 Jan 2024

**HAL** is a multi-disciplinary open access archive for the deposit and dissemination of scientific research documents, whether they are published or not. The documents may come from teaching and research institutions in France or abroad, or from public or private research centers.

L'archive ouverte pluridisciplinaire **HAL**, est destinée au dépôt et à la diffusion de documents scientifiques de niveau recherche, publiés ou non, émanant des établissements d'enseignement et de recherche français ou étrangers, des laboratoires publics ou privés.

# Glacier-wide summer surface mass-balance calculation: hydrological balance applied to the Argentière and Mer de Glace drainage basins (Mont Blanc)

A. VIANI,<sup>1,2</sup> T. CONDOM,<sup>1</sup> C. VINCENT,<sup>3</sup> A. RABATEL,<sup>3</sup> B. BACCHI,<sup>2</sup> J. E. SICART,<sup>1</sup> J. REVUELTO,<sup>4</sup> D. SIX,<sup>3</sup> I. ZIN<sup>1</sup>

<sup>1</sup>University of Grenoble Alpes, CNRS, IRD, Institut des Géosciences de l'Environnement (IGE) - UMR 5001, Grenoble, France

<sup>2</sup>Department of Civil Engineering, Architecture, Land, Environment and Mathematics (DICATAM), University of Brescia, Brescia, Italy

<sup>3</sup>University of Grenoble Alpes, CNRS, Institut des Géosciences de l'Environnement (IGE) - UMR 5001, Grenoble, France

<sup>4</sup>Météo-France - CNRS, CNRM UMR 3589, Centre d'Études de la Neige (CEN), Grenoble, France

Correspondence: Alessandra Viani <[vianialessandra@gmail.com](mailto:vianialessandra@gmail.com)>

**ABSTRACT.** We present the glacier-wide summer surface mass balances determined by a detailed hydrological balance (*sSMBhydro*) and the quantification of the uncertainties of the calculations on the Argentière and Mer de Glace-Leschaux drainage basins, located in the upper Arve watershed (French Alps), over the period 1996–2004. The spatial distribution of precipitation within the study area was adjusted using in situ winter mass-balance measurements. The *sSMBhydro* performance was assessed via a comparison with the summer surface mass balances based on in situ glaciological observations (*sSMBglacio*). Our results show that the *sSMBhydro* has an uncertainty of  $\pm 0.67$  m w.e.  $a^{-1}$  at Argentière and  $\pm 0.66$  m w.e.  $a^{-1}$  at Mer de Glace-Leschaux. Estimates of the Argentière *sSMBhydro* values are in good agreement with the *sSMBglacio* values. These time series show almost the same inter-annual variability. From the marked difference between the *sSMBhydro* and *sSMBglacio* values for the Mer de Glace-Leschaux glacier, we suspect a significant role of groundwater fluxes in the hydrological balance. This study underlines the importance of taking into account the groundwater transfers to represent and predict the hydro-glaciological behaviour of a catchment.

**KEYWORDS:** Glacier hydrology, glacier mass balance, mass-balance reconstruction, mountain glaciers

## 1. INTRODUCTION

The role of mountains in sustaining the social and economic wellbeing of millions of people is well known and unquestioned since snow fields and glaciers provide indispensable water resources for municipal and industrial water supplies, irrigation, hydropower production and other environmental services (e.g., Viviroli and Weingartner, 2004; Barnett and others, 2005; Viviroli and others, 2007, 2011).

Glaciers are considered as one of the most reliable indicators of climate variations, having either an anthropogenic or natural origin (Oerlemans, 1986; Haeberli, 1995, 2005; Johannesson, 1997). Changes in melt rates impact runoff dynamics and mainly regulate summer stream flows (Jansson and others, 2003; Dahlke and others, 2012). Therefore, in highly glacierized catchments, glacier melt provides an important contribution to the river discharge, particularly during the summer (Verbunt and others, 2003; Koboltschnig and others, 2008; Jost and others, 2012). The retreat of glaciers could lead to increased hazards, such as outbursts of glacier lakes, destabilization of slopes and floods. Furthermore, glaciers have been the biggest source of the observed sea-level rise since 1900 (Vaughan and others, 2013) and they will potentially contribute more strongly to sea-level rise within the 21st century than the ice sheets (Church and others, 2013). For this reason, it is important to have a good understanding of the summer glacier surface mass-balance evolution in order to improve

the knowledge of the interaction between glaciers, climate and hydrology. In addition, the assessment of meltwater runoff is crucial for both water supply and hydropower applications.

The determination of the glacier mass balances can be obtained using different methods, such as geodetic, glaciological and energy balance methods (Cogley and others, 2011). There are several studies on modelling of glacier surface mass balance, in the context of providing future projections of runoff from specific glaciers (Immerzeel and others, 2012) and all glaciers worldwide (Marzeion and others, 2012). These models are often calibrated/validated against glaciological and/or altimetric measurements of glacier mass balance. If such models are used to calculate future runoff, they may be erroneous, as they are not accounting for inter-basin transfer (i.e. subterranean fluxes).

The current study shows the importance of considering the groundwater fluxes. The method proposed is to estimate the glacier-wide summer surface mass balance using the hydrological method in two glacierized catchments. Our attention is focused on the Argentière and Mer de Glace-Leschaux glaciers, located in the upper part of the Arve watershed at Chamonix (French Alps). To this end, the glacier-wide summer surface mass balance is obtained using observed runoff data and the quantification of each term of the hydrological balance equation, as well as their uncertainties during the summer season (June, July, August, September, hereafter

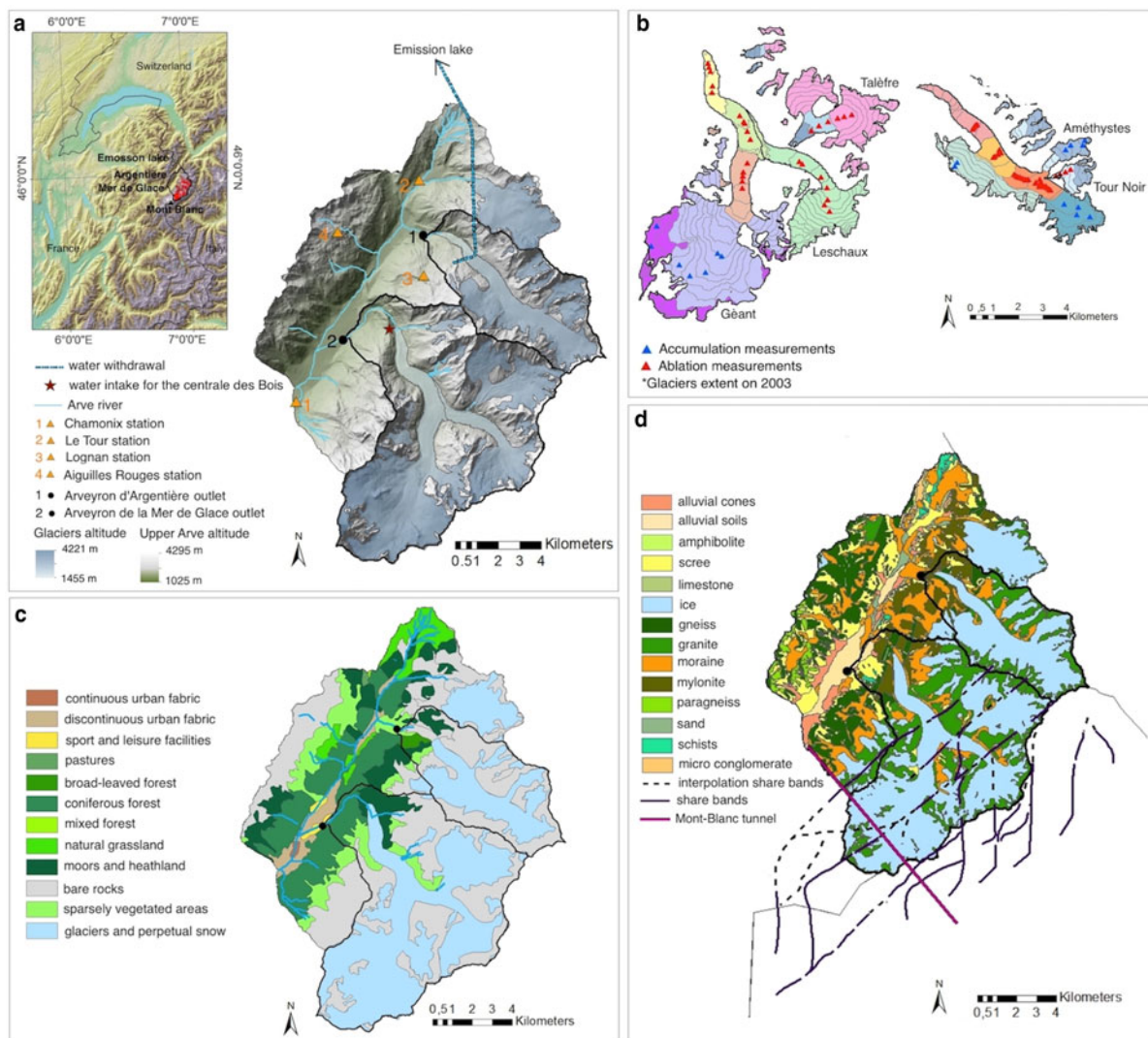
denoted as JJAS) over the period 1996–2004. Meteorological data are taken from the SAFRAN (Système d'Analyse Fournissant des Renseignements Adaptés à la Nivologie) (see Section 3.2) reanalysis due to the lack of in situ measurements. An adjusted precipitation dataset (adjusted SAFRAN) has been produced on the base of the SAFRAN reanalysis (original SAFRAN) taking into account the observed accumulation measurements at each glacier surface. The performance of the summer surface mass-balance estimations based on hydrological data (*sSMBhydro*) is evaluated by comparing them with the glacier-wide summer surface mass balances based on in situ glaciological observations (*sSMBglacio*), over the period 1996–2004.

This paper will first describe the study sites (Section 2) and the available data (Section 3). Then, we will focus on the methodology (Section 4). The estimation of the glacier-wide summer surface mass balances obtained with

hydrological and glaciological methods (Section 5) and their comparison (Section 6) will be analysed in detail.

## 2. STUDY SITE

The Arve River is an alpine river with a glacial regime that flows mainly through France in the region of Haute-Savoie. Rising in the Graian Alps, close to the Swiss border, it receives water from many glaciers of the Mont Blanc massif before flowing into the Rhône River. The Arve catchment covers a surface area of 2083 km<sup>2</sup>. This study focuses on the upper Arve catchment at Chamonix (Fig. 1a), located between the Mont Blanc and Aiguilles Rouges massifs. Its surface area is highly glacierized (35% of the total area, in 2003) with three main glaciers located in the eastern part: Glacier du Tour, Glacier d'Argentière and Glacier de la Mer de Glace-Leschaux, covering areas of 8.2, 11.4 and



**Fig. 1.** (a) Location and altimetry of the upper Arve watershed, Arveyron d'Argentière and Arveyron de la Mer de Glace catchments and their respective glaciers (in 2003). The black points and orange triangles respectively indicate the location of the hydrological gauging stations of the two catchments considered and the network of the snow depth gauging stations. The star locates the water intake of the centrale des Bois hydroelectric plant. (b) Mer de Glace-Leschaux (left) and Argentière glaciers (right) with all their tributaries in 2003 (Gardent and others, 2014; Rabatel and others, 2016). The triangles represent the network of the in situ surface mass-balance measurements in both the accumulation (blue) and ablation (red) areas. The different coloured areas indicate the glacier divisions for the computation of the glacier-wide winter glaciological surface mass balance (see Section 4.2). (c) Land cover map of the study area (CLC 06 (Corine Land Cover 2006) (EEA (European Environment Agency), 2007)). (d) Geological map provided by BRGM (Bureau de Recherches Géologiques et Minières). The solid and dotted purple lines respectively represent the main shear zones and their interpolation (Rossi and Rolland, 2014). The pink line indicates the location of the Mont Blanc road tunnel. In figures (c) and (d), the glacier extents are indicative only.

31.6 km<sup>2</sup> in 2003, respectively (Gardent and others, 2014; Rabatel and others, 2016). Here, we focus on the glaciers that belong to the GLACIOCLIM (Les GLACIers, un Observatoire du CLIMat) observatory (<https://glacioclim.osug.fr>, Six and Vincent (2014)): Glacier d'Argentière, monitored since 1976, and Glacier de la Mer de Glace-Leschaux, monitored since 1979 (Fig. 1b, Table 1). All the tributaries of these glaciers are considered in the present study. The main tributaries are Glacier des Améthystes (1.3 km<sup>2</sup>) and Glacier du Tour Noir (1.2 km<sup>2</sup>) for Argentière and Glacier de Talèfre (7.7 km<sup>2</sup>) for Mer de Glace-Leschaux (Fig. 1b). In 2003, the overall surface area of the Argentière glacier with its tributaries was 15.7 km<sup>2</sup>, while that of Mer de Glace-Leschaux and its tributaries was 42.3 km<sup>2</sup>. The hypsometric curves of the glaciers and their tributaries are shown in Fig. 2.

In the upper Arve catchment, two main glacierized catchments can be identified: Arveyron d'Argentière (32.2 km<sup>2</sup>) and Arveyron de la Mer de Glace (79.4 km<sup>2</sup>) (Table 2). The lowest point reached by the Arveyron de la Mer de Glace catchment is at 1060 m a.s.l. and the highest is at 4295 m a.s.l. (Fig. 2a). The elevation range of the Arveyron d'Argentière catchment is between 1363 and 4079 m a.s.l. (Fig. 2a). The largest part of the Arveyron d'Argentière catchment faces southwest (19.2%), while that of the Arveyron de la Mer de Glace faces northwest (17.9%). Nine percent of the area of both catchments faces southward. The extent of the forested and vegetated areas of the Arveyron de la Mer de Glace catchment is slightly higher (1.4%) than that of the Arveyron d'Argentière (Fig. 1c, Table 2). Upstream of the Arveyron d'Argentière gauging station (at 2060 m a.s.l.), water from the Argentière main glacier is collected by a subterranean tunnel carved into the rock, managed by Electricité d'Emosson S.A. and directed toward Emosson lake (Switzerland) for electricity production (Fig. 1a). Within the Arveyron de la Mer de Glace catchment, there is a subterranean hydroelectric power plant (centrale des Bois, 1075 m a.s.l.) managed by EDF (Electricité De France) using part of the water of the sub-glacial river of the Mer de Glace-Leschaux glacier (Fig. 1a). The outflow of this hydroelectric plant is located upstream of the Arveyron de la Mer de Glace hydrological gauging station.

The major rock types present in the Mont Blanc and Aiguilles Rouges massifs, and thus also in the two glacierized catchments considered here, are granite and gneiss (Fig. 1d). These crystalline rocks underwent several episodes of ductile and brittle tectonic deformation (Corbin and Oulianoff,

1930; Jamier, 1975). The results are fissure and fracture systems in a N-S and NE-SW direction that primarily stretch across the southern part of the upper Arve watershed (Fig. 1d) (Dubois, 1992; Rossi and Rolland, 2014). It is also noticeable that there is a significant amount of alluvial soils and scree in the lowest part of the Arveyron de la Mer de Glace catchment.

### 3. DATA

#### 3.1. DEM, glacier surfaces, land cover and geology

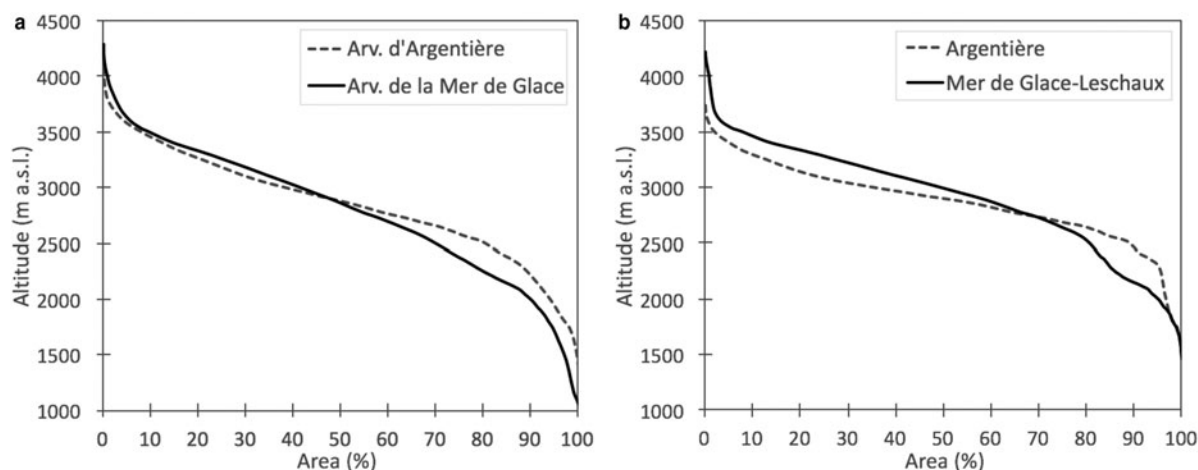
The RGE ALTI DEM provided by the French National Geographic Institute (IGN, Institut Géographique National, France) with a horizontal resolution of 5 m is used to extract topographic information (elevation, slope and aspect) for the study area in 2012 and to calculate the potential solar radiation based on a hemispherical viewshed algorithm (Rich and others, 1994; Fu and Rich, 1999, 2002). In addition, glacier shapes obtained using Landsat and ASTER images in 2003 and 2012 (Gardent and others, 2014; Rabatel and others, 2016) are used to calculate changes in the glacier surface area, assuming an annual linear change between the two dates. The land cover is investigated using the 2006 Corine Land Cover map, generated with an automatic classification for the whole of Europe (EEA, 2007). Finally, the 1 : 50000 geological map provided by BRGM is used to investigate the lithology of the study area.

#### 3.2. Meteorological data

Because of the lack of long-term meteorological records at high altitudes close to glaciers, atmospheric temperature and precipitation data are taken from the SAFRAN reanalysis, available at an hourly timescale over the 1958–2013 period at 300 m altitude steps from 1200 m to 3600 m a.s.l., at the scale of the Mont Blanc massif. SAFRAN (Durand and others, 1999, 2009) is a meteorological analysis system performing a spatialisation of the observed weather data available over the considered elevations and aspects of 23 different massifs within the French Alps. SAFRAN provides near-surface atmospheric variables (temperature, precipitation rate and phase, incoming shortwave and longwave radiations, wind speed and relative humidity) combining in situ and remotely sensed observations with a prior estimation (called 'guess') provided by the results of the ARPEGE (Action Recherche Petite Echelle Grande Echelle) French

**Table 1.** Main characteristics of the two glaciers considered and their main tributaries. The surface areas, elevations and equilibrium-line altitude (ELA) were obtained using satellite images (Rabatel and others, 2013). The number of measurement sites in the ablation and accumulation areas are also listed (Six and Vincent, 2014)

	Argentière	Mer de Glace-Leschaux
Massif	Mont Blanc	Mont Blanc
Main glacier tributaries	Améthystes, Tour Noir	Talèfre
Glacier surface area in 2003 in km <sup>2</sup> (in % of the glacier drainage basin area)	15.7 (48.8)	42.3 (53.3)
Glacier surface area in 2012 in km <sup>2</sup> (in % of the glacier drainage basin area)	14.6 (45.2)	40.0 (50.4)
Min elevation in 2003 (in 2012) (m a.s.l.)	1455 (1627)	1465 (1538)
Max elevation in 2003 (in 2012) (m a.s.l.)	3738 (3738)	4221 (4221)
Aspect	North-South	North-South
No. of stakes (accumulation area)	9	7
No. of stakes (ablation area)	30	31
Mean ELA main glacier (1984–2014) (m a.s.l.)	2772	2890



**Fig. 2.** Hypsometric curves for the (a) Arveyron d'Argentière and Arveyron de la Mer de Glace catchments and (b) Argentière and Mer de Glace-Leschaux glaciers (with all of their tributaries) in 2003.

**Table 2.** Main characteristics and land covers (CLC 06, (EEA, 2007)) of the two glacierized catchments considered

	Arv. d'Argentière	Arv. de la Mer de Glace
Surface area (km <sup>2</sup> ).	32.2	79.4
Min elevation (m a.s.l.).	1363	1060
Max elevation (m a.s.l.).	4079	4295
Median altitude (m a.s.l.).	2877	2863
Mean slope (degree).	30	30
Sport and leisure facilities in km <sup>2</sup> (in %).	–	0.04 (0.10)
Broad-leaf forest in km <sup>2</sup> (in %).	0.7 (2.2)	–
Coniferous forest in km <sup>2</sup> (in %).	0.02 (0.07)	3.0 (3.7)
Moors and heathland in km <sup>2</sup> (in %).	2.2 (6.7)	3.5 (4.4)
Bare rocks in km <sup>2</sup> (in %).	14.6 (45.3)	24.7 (31.1)
Sparsely vegetated areas in km <sup>2</sup> (in %).	0.6 (2.0)	3.5 (4.4)
Glaciers and perpetual snow in km <sup>2</sup> (in %).	14.2 (43.8)	44.7 (56.3)

meteorological model (Courtier and others, 1991) or from the ECMWF (European Centre for Medium-range Weather Forecasts) analyses through appropriate downscaling operators (Hagemann and others, 2009). The altitude parameters (air temperature, wind, humidity and cloudiness) are analysed by the Optimal Analysis (OI) method (Durand, 1985), a linear regression that uses a flexible statistical scheme, which allows an estimate of every analysed parameter with different possible adjacent data. In a first stage, air temperature, wind and humidity variables are interpolated horizontally using Bichard polynomials and vertically on analysis locations. Afterwards, the preliminary estimated variables are modified using observed values to fit daily meteorological conditions better (for further details see Durand and others, 1993).

In this study, only the Mont Blanc massif is considered since it covers the whole study area.

### 3.3. Glaciological data

Available point measurements of the summer (*psSMB*) and winter (*pwSMB*) surface mass balances over the accumulation and ablation areas of the Argentière and Mer de Glace-Leschaux glaciers and their main tributaries (Tour Noir, Améthystes and Talèfre glaciers) since 1995 are used (Six and Vincent, 2014) (Fig. 1b). The *psSMB* measurements, made at the end of September/beginning of October, are

obtained from the difference between the point measurements of the annual and winter surface mass balances. The point winter surface mass balances are measured at the end of April/middle of May by drilling cores, based on snow layering (stratigraphy) and density, giving the amount of snow accumulated and its water equivalent. The point annual surface mass balances are determined from wood stakes inserted in the ice. The glacier-wide annual surface mass balances (*aSMBglacio*) of the two considered glaciers quantified by GLACIOCLIM (Vincent and others, 2009, 2014) are also used. Available over the period 1979–2012, they are calculated using the linear model (Lliboutry, 1974; Vincent and others, 2017) adjusted by the geodetic method.

### 3.4. Snow cover

The MOD10A1 products (snow cover and fractional snow cover) with 500 m grid resolution, available from MODIS (MODerate resolution Imaging Spectroradiometer) satellite sensors since 2000, are used to investigate the extent of the snow cover (Hall and others, 2006). These data are based on a snow mapping algorithm that uses the Normalized Difference Snow Index (NDSI). The NDSI is a spectral band ratio that takes advantage of the spectral differences of snow in short-wave infrared and visible MODIS spectral bands to distinguish snow from clouds and other nonsnow-covered conditions (Salomonson and Appel, 2004).

Furthermore, point snow depth measurements provided by four stations (Fig. 1a) located within the study area at different elevations (Chamonix at 1025 m a.s.l., Le Tour at 1470 m a.s.l., Lognan at 1970 m a.s.l. and Aiguilles Rouges Nivose at 2365 m a.s.l.), belonging to the Météo-France observation network, are used to estimate the amount of winter snow contributing to the summer discharge over the 1996–2004 period.

### 3.5. Hydrological data

The analyses presented in this study are carried out using the total discharge dataset for both Arveyron d'Argentière (available over the period 1955–2004) and Arveyron de la Mer de Glace (available over the period 1950–2014) catchments, available at daily time step and provided by EDF. Because of the water withdrawals below the Argentière glacier, the total discharge of the Arveyron d'Argentière was obtained by adding the data measured at the extraction point to the stream discharge values registered by the gauging station located at the outlet of the catchment. The discharge values of the Arveyron de la Mer de Glace catchment are provided by the gauging station at its outlet. In the Argentière drainage basin, the available data are mainly concentrated from the end of May–October as the sensors are removed during winter.

Finally, it should be noted that the common period covered by all of the datasets (except for the MODIS images) ranges from 1996 to 2004 over the summer season.

## 4. METHODS

### 4.1. Hydrological method

The simulated glacier-wide summer surface mass balances are obtained by calculating the hydrological balance equation (Eqn (1)) of each glacier drainage basin over the summer season (JJAS).

$$-sSMB_{hydro} = -Q_{in-situ\ JJAS} + P_{tot\ JJAS} - ETA_{JJAS} - S_{JJAS} + \Delta S_{JJAS} \tag{1}$$

$$\Delta S_{JJAS} = \Delta M_{snow\ JJAS} - \Delta C_{JJAS} \tag{2}$$

$$\Delta C_{JJAS} = 0 \tag{3}$$

where *sSMB<sub>hydro</sub>* is the simulated glacier-wide summer surface mass balance, *Q<sub>in-situ JJAS</sub>*, *P<sub>tot JJAS</sub>*, *ETA<sub>JJAS</sub>* and *S<sub>JJAS</sub>* are the runoff, the total amount of precipitation over the entire catchment considered, the actual evapotranspiration of the overall catchment and the sublimation of the overall ice and snow surfaces of the catchment considered, respectively, over the JJAS period. *ΔS<sub>JJAS</sub>* (Eqn (2)) represents the storage variation of the catchment during the summer, including the contribution given by the melting of snow

(*ΔM<sub>snow JJAS</sub>*) accumulated during the wintertime (October–May) outside of the glacierized areas and the groundwater (*ΔC<sub>JJAS</sub>*). The latter is assumed to be equal to zero (Eqn (3)). The glacier storage variation is included in the glacier-wide summer surface mass-balance term. All quantities are in m<sup>3</sup> s<sup>-1</sup>. A semi-distributed approach is used: each catchment has been divided into 10 elevation bands. We have added another band to the nine bands based on the SAFRAN division, in order to take the area of the catchments located above 3750 m a.s.l. into account (see the details of the elevation range of the bands in Table 3).

The summer (JJAS) potential evapotranspiration (*ETP*) of glacierized catchments is obtained as the product of the reference evapotranspiration (*ET<sub>0</sub>*) and the crop coefficient value (*K<sub>c</sub>*), according to the FAO method (FAO, 1998). *ET<sub>0</sub>* is calculated using the formula proposed by Oudin and others (2005), based on the mean daily air temperature and calculated extra-terrestrial radiation (Morton, 1983). Four reference *K<sub>c</sub>* values (FAO, 1998), one for each summer month, are adopted for the different types of soil (Table 4). The summer *ETP* (m<sup>3</sup> a<sup>-1</sup>) is then calculated as follows:

$$ETP_{JJAS} = \left( \sum_{b=1}^{10} \left( \sum_{m=6}^9 \left( \sum_{n=1}^N (K_c(n,m)A(n,b) ET_0(m,b)) \right) \right) \right)_n \tag{4}$$

where the indexes *b*, *m* and *n* represent the bands of altitude, summer months and different types of land cover, respectively. *A* is the area, *K<sub>c</sub>* is the crop coefficient and *ET<sub>0</sub>* is the reference evapotranspiration value calculated using the SAFRAN daily temperature. Thus, the summer *ETP* volume for the catchments considered in this work is obtained as the sum of the summer potential evapotranspiration associated with the 10 bands of altitude (Eqn (4)). Evapotranspiration above the summer 0 °C isotherm (3750 m a.s.l.) is considered to be negligible. The glacier evaporation is considered negligible as it is usually small compared with the other terms of the hydrological balance equation (Paterson, 1994). Due to the frequent precipitation events during the summer season over the upper Arve catchment (60% of the summer days over the 1996–2004 period), the actual evapotranspiration (*ETA*) is expected to be equal to the potential evapotranspiration on most days (Konzelmann and others, 1997) (Eqn (5)).

$$ETA_{JJAS} = ETP_{JJAS} \tag{5}$$

Three temperature time series (mean, maximum and minimum) from the SAFRAN reanalysis were used to calculate the *ETA* in order to know its range of interannual variability.

**Table 3.** Values of the central altitude of the bands and the Y multiplication factors used in Eqn (6)

Band of altitude	1	2	3	4	5	6	7	8	9	10
Central altitude band (m a.s.l.)	1200	1500	1800	2100	2400	2700	3000	3300	3600	4025
Y [-]	0	0	0	0	0.220	0.415	0.610	0.805	1.000	0

The elevation ranges of each band are the following: Band 1 [1050–1350 m a.s.l.], Band 2 [1350–1650 m a.s.l.], Band 3 [1650–1950 m a.s.l.], Band 4 [1950–2250 m a.s.l.], Band 5 [2250–2550 m a.s.l.], Band 6 [2550–2850 m a.s.l.], Band 7 [2850–3150 m a.s.l.], Band 8 [3150–3450 m a.s.l.], Band 9 [3450–3750 m a.s.l.] and Band 10 [3750–4300 m a.s.l.].

**Table 4.** Reference  $K_c$  values for each type of land cover, for each summer month (JJAS), used in Eqn (4)

Land cover type	June	July	August	September
Urban fabrics	1.00	1.00	1.00	1.00
Sport and leisure facilities	1.00	1.00	1.00	1.00
Forest	1.20	1.20	1.20	1.18
Moors and heathland	0.50	0.50	0.50	0.50
Bare rocks	0.30	0.30	0.30	0.30
Sparsely vegetated areas	0.36	0.36	0.36	0.36

Six and others (2009) have shown that, during the summer season, sublimation is  $<0.12 \text{ mm w.e. d}^{-1}$  on the Saint-Sorlin glacier, located in the French Alps. Based on this result and in light of the relatively small distance ( $\sim 100 \text{ km}$  as the crow flies) to the Arve watershed, we assumed that sublimation is negligible compared with the other fluxes in our study area. Therefore, the  $S_{JJAS}$  in Eqn (1) is set to zero.

The contribution of solid precipitation accumulated during the wintertime ( $\Delta M_{snow}$ ) to the summer discharge is calculated by considering the melting of the available snowpack that exists on 1 June outside of the glacierized areas. The presence of the snowpack and its thickness are quantified from the SAFRAN winter (October–May) snowfall data, MODIS images and in situ snow depth measurements. The following formula is used:

$$\Delta M_{snow JJAS} = \sum_{b=1}^{10} (Y(b) P_{snow ONDJFMAM}(b)) \quad (6)$$

where the index  $b$  represents the elevation bands (Table 3),  $P_{snow ONDJFMAM}$  is the amount of winter (October–May) solid precipitation from the SAFRAN reanalysis (in mm w.e.) and  $Y$  is a multiplication factor indicating the percentage of the snow present on 1 June that can melt (in %). We assumed that there is negligible melt above the mean summer  $0^\circ\text{C}$  isotherm (at 3750 m a.s.l.). MODIS images

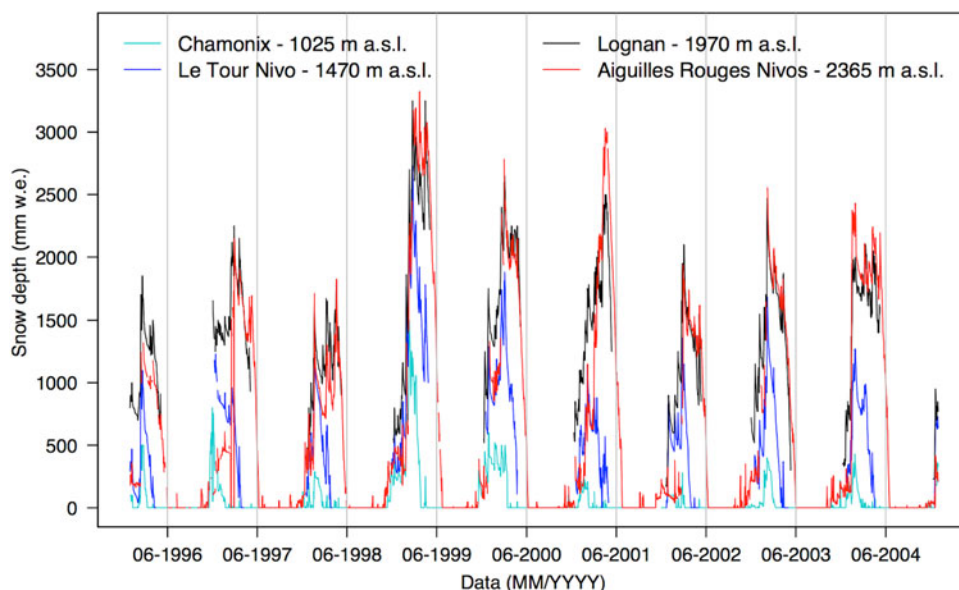
are used to identify the range of altitude characterized by the presence of snow on 1 June outside of the glacierized areas. The available point measurements of snow depth (Fig. 3) are used to validate the observation from the MODIS images and to quantify the snow depth at 1 June (in case of the presence of snow) in the part of the catchments up to 2550 m a.s.l. over the period 1996–2004. Once the altitude bands with snow on 1 June are identified, the  $Y$  is obtained by assuming a linear change with altitude and the complete melting of the existing percentage of snow. We estimate that the areas below 2350 m a.s.l. and above 3750 m a.s.l. do not represent a source of summer discharge ( $Y_{1,2,3,4,10} = 0$ ) due to the absence of snow below 2350 m a.s.l. at the beginning of June and the absence of snow melt above 3750 m a.s.l. over the 1996–2004 period due to low temperatures (Table 3). The contributing areas to the summer snow melt range from 2350 to 3750 m a.s.l., i.e. from the 5th to the 9th band of altitude (Table 3). On the basis of the in situ measurements the  $Y$  value at the 5th band is estimated equal to 0.22 while it is set to 1 at the 9th band. Doing a linear interpolation between these two extreme values of  $Y$ , we obtained  $Y$  values equal to 0.415, 0.610 and 0.805 respectively for the 6th, 7th and 8th bands of altitude (Table 3).

## 4.2. Glaciological method

In order to know the performance of the simulated glacier-wide summer surface mass balances using the hydrological method ( $sSMB_{hydro}$ ) (Eqn (1)), we compared these balances with the ‘observed’ glacier-wide summer glaciological surface mass balances ( $sSMB_{glacio}$ ) quantified for the Argentière and Mer de Glace-Leschaux glaciers (and their tributaries) as follows:

$$sSMB_{glacio} = aSMB_{glacio} - wSMB_{glacio} \quad (7)$$

where  $aSMB_{glacio}$  is the glacier-wide annual glaciological surface mass balance and  $wSMB_{glacio}$  is the glacier-wide winter glaciological surface mass balance.  $wSMB_{glacio}$  is



**Fig. 3.** Evolution of the point-scale snow depth measurements over the period 1996–2004, registered by four Météo-France meteorological stations at different altitudes. Grey vertical lines indicate 1 June of each year.

obtained as follows. First, the glaciers are divided into different zones: seven for Argentière and nine for Mer de Glace-Leschaux, respectively ranging from 1.4 to 3.7 km<sup>2</sup> and 0.8 to 14.9 km<sup>2</sup> based on altitude, potential solar radiation and exposure (Fig. 1b). Then, for the years when some *pwSMB* measurements are missing (20% of the cases for Argentière and 27% for Mer de Glace-Leschaux), each missing stake measurement is estimated using a linear function with the next best fitting neighbouring stake. The fitting stake is chosen among the different neighbouring stakes on the base of the value of the determination coefficient (*R*<sup>2</sup>, that ranges from 0.70 to 0.97). Second, for each glacier and for each year, the complete *pwSMB* dataset is interpolated with quadratic curves as a function of altitude (Réveillet and others, 2017). *wSMB<sub>glacio</sub>* (in m w.e. a<sup>-1</sup>) is calculated as the sum of the products between the *pwSMB* values at the mean altitude of the zone considered and its area, normalized by the area of the whole glacier considered in the year considered, to take the evolution of the glacier surface into account.

### 4.3. SAFRAN precipitation adjustment

Given that the SAFRAN reanalysis only partially represents the spatial variability of the meteorological conditions within a massif (Durand and others, 2009; Vionnet and others, 2016; Birman and others, 2017), we propose a correction of the SAFRAN precipitation values based on the comparison with the *pwSMB* measurements (Gerbaux and others, 2005; Dumont and others, 2012; Réveillet and others, 2017). Glacier winter surface mass-balance observations have often been used to either replace precipitation measurements or to validate precipitation estimates at high altitudes (Bucher and others, 2004; Carturan and others, 2012). To capture the spatial variability in the amount of precipitation for the Arveyron d'Argentière and the Arveyron de la Mer de Glace catchments, the correction is done separately for the upper reaches of the two glacierized catchments over the 1996–2004 period. Below the mean altitude reached by the winter 0 °C isotherm (at 2550 m a.s.l.), the SAFRAN values are not modified because melting processes can occur and therefore the winter surface mass-balance measurements can underestimate the winter solid

precipitation. Conversely, SAFRAN values for higher elevation bands (from 2550 to 4300 m a.s.l.) are increased by an amount that is given by the difference between the trend lines for the SAFRAN winter precipitation and the *pwSMB* measurements, located in the accumulation zone of the glaciers or at least above 2550 m, obtained using quadratic functions that best fit the data (Fig. 4). The same precipitation adjustment is applied over the winter and the summer seasons.

In this study, we therefore, consider two SAFRAN precipitation datasets: the original one (hereafter called 'original SAFRAN') and the adjusted one (hereafter called 'adjusted SAFRAN').

### 4.4. Uncertainty in the simulated and 'observed' glacier-wide summer surface mass balances

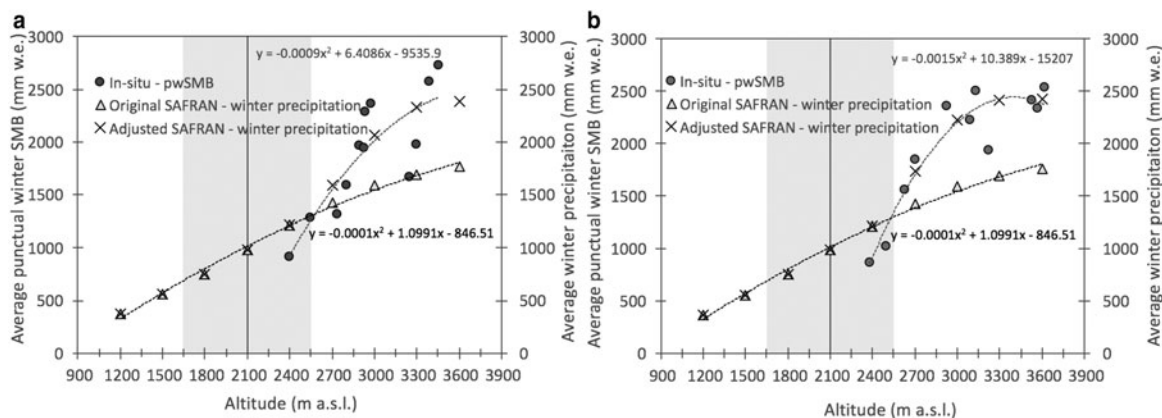
The standard uncertainty of the *sSMB<sub>hydro</sub>* ( $\sigma_{sSMBhydro}$ ), at the 68% level of confidence, is obtained as follows, assuming the errors are random and independent:

$$\sigma_{sSMBhydro} = \sqrt{\sigma_{Q_{in-situ}}^2 + \sigma_{P_{tot}}^2 + \sigma_{ETA}^2 + \sigma_{\Delta M_{snow}}^2} \quad (8)$$

where  $\sigma_{Q_{in-situ}}$ ,  $\sigma_{P_{tot}}$ ,  $\sigma_{ETA}$  and  $\sigma_{\Delta M_{snow}}$  are, respectively, the standard uncertainties on the in situ runoff data, the total amount of summer precipitation, the actual evapotranspiration and the melting of the winter snow terms, all over the JJAS period, at the 68% level of confidence.  $\sigma_{Q_{in-situ}}$  is quantified using the formulation described in the Manual on Stream Gauging (WMO, 2010), in ISO 1088 (2007a) and ISO 748 (2007b) and adapted to the gauging stations of our study. A 10% standard uncertainty was assumed reliable and conservative.

$\sigma_{P_{tot}}$  and  $\sigma_{\Delta M_{snow}}$  are obtained by multiplying the daily standard uncertainty of the original SAFRAN massif precipitation ( $\sigma_p$ ) for the summer and winter days, respectively.  $\sigma_p$  (in mm d<sup>-1</sup>) is calculated as follows, considering the winter season:

$$\sigma_p = \frac{\sqrt{\sigma_{wPSAFRAN}^2 + \sigma_{pwSMB}^2}}{\text{winter days}} \quad (9)$$



**Fig. 4.** Evolution with altitude of the point winter surface mass balance (*pwSMB*) of the (a) Argentière and (b) Mer de Glace-Leschaux glaciers and the winter precipitation of the SAFRAN reanalysis, averaged over the period 1996–2004. The dotted lines represent the trend lines of the original SAFRAN winter precipitation and the *pwSMB* obtained using quadratic functions. The black crosses show the adjusted SAFRAN winter precipitation values. The grey area represents the altitude range reached by the 0 °C isotherm during winter (over the period 1996–2004).



where  $\sigma_{wPSAFRAN}$  and  $\sigma_{pwSMB}$  are the standard uncertainties of the original winter SAFRAN precipitation and the  $pwSMB$  data, respectively.  $\sigma_{wPSAFRAN}$  is taken as equal to the difference between the trend lines of the SAFRAN winter precipitation and the  $pwSMB$  measurements at the median altitude of the considered catchments (Table 2).  $\sigma_{pwSMB}$  is considered as equal to the mean deviation of  $pwSMB$  for the considered glacier from its quadratic trend line above the winter 0 °C isotherm, over the period 1996–2004. These uncertainties are also applied to the adjusted SAFRAN precipitation values.

$\sigma_{ETA}$  is quantified as half the range of the maximum to minimum  $ETA$  difference over the period 1996–2004.

The standard uncertainty of the  $sSMBglacio$  ( $\sigma_{sSMBglacio}$ ), at the 68% level of confidence, is calculated as follows:

$$\sigma_{sSMBglacio} = \sqrt{\sigma_{aSMBglacio}^2 + \sigma_{wSMBglacio}^2} \quad (10)$$

where  $\sigma_{aSMBglacio}$  and  $\sigma_{wSMBglacio}$  are the standard uncertainties of the  $aSMBglacio$  and the  $wSMBglacio$ , respectively.  $\sigma_{wSMBglacio}$  is taken as equal to the mean of the deviation of the  $pwSMB$  data for the considered glacier from the quadratic line fitted to  $pwSMB$  with their elevation, over the period

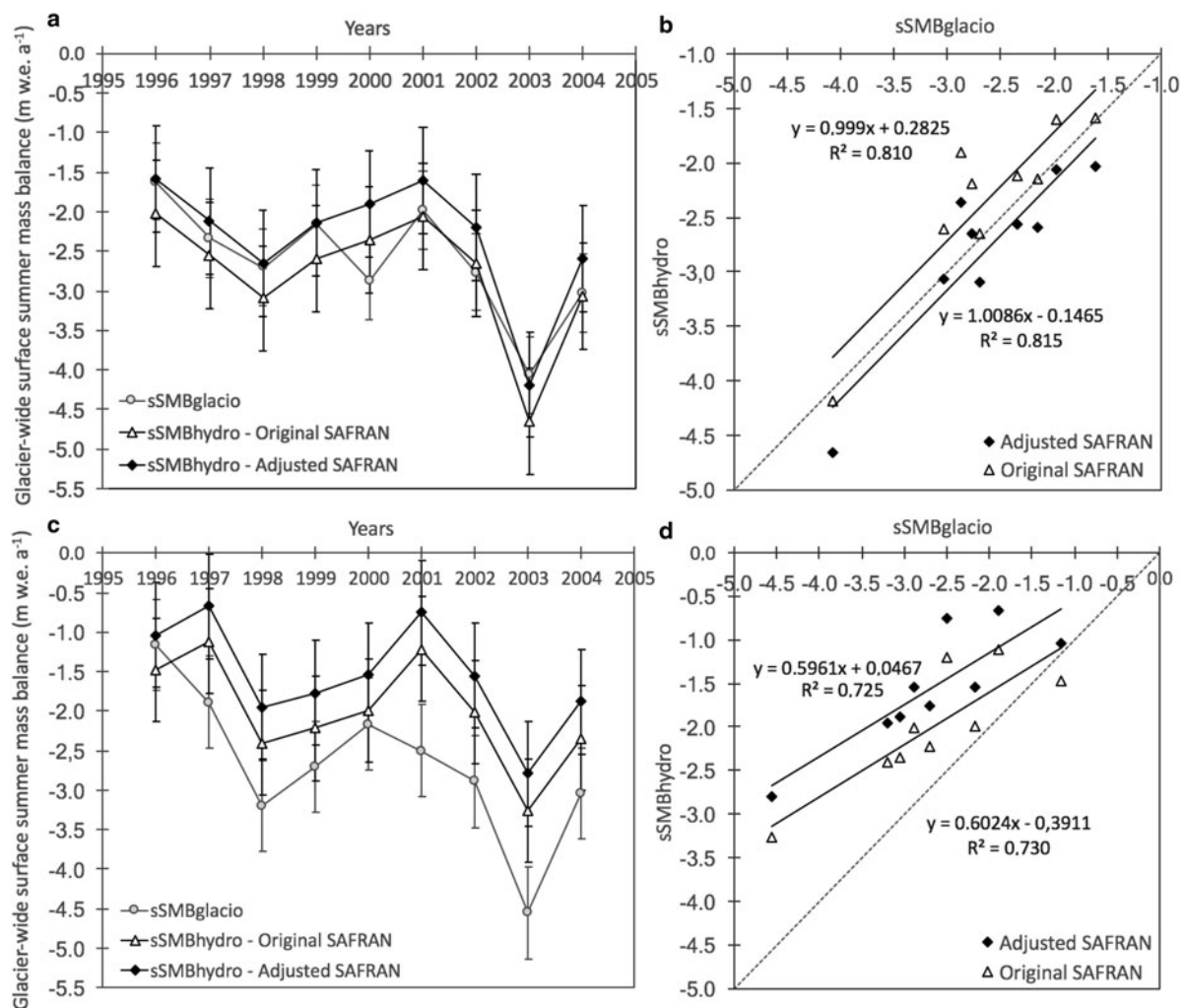
1996–2004. For the  $\sigma_{aSMBglacio}$  value of both glaciers, we used the error quantified by Berthier and others (2014) for the glaciological mass balance of the Argentière glacier, that is equal to  $\pm 0.40$  m w.e.  $a^{-1}$ .

It is important to note that the approach for the uncertainty estimation used in this paper is characterized by a significant degree of subjectivity, so one has to have in mind that the uncertainties could be slightly larger or slightly smaller.

## 5. RESULTS

### 5.1. Glacier-wide summer surface mass balance from in situ glaciological measurements

Looking at the evolution of the  $sSMBglacio$  (Fig. 5a, c), it can be seen that the two glaciers considered here (with their tributaries) are characterized by almost the same interannual variability over the period 1996–2004. The mass loss of the Mer de Glace-Leschaux glacier (including all its tributaries) is slightly greater than that of the Argentière glacier (also including all its tributaries) over the entire period considered ( $-2.68$  m w.e.  $a^{-1}$  vs  $-2.62$  m w.e.  $a^{-1}$ ), but the average difference between the two series can be considered within their measurement uncertainties ( $\pm 0.49$  m w.e.  $a^{-1}$  for



**Fig. 5.** Comparison between the ‘observed’ glacier-wide summer surface mass balances ( $sSMBglacio$ ) and the quantified balances ( $sSMBhydro$ ) using the original and adjusted SAFRAN data for (a) the Argentière (including its tributaries) and (c) Mer de Glace-Leschaux (including its tributaries) glaciers over the period 1996–2004. Vertical bars represent the standard uncertainties. Correlations between the  $sSMBglacio$  dataset and the two estimates of  $sSMBhydro$  for (b) the Argentière and (d) Mer de Glace-Leschaux glaciers over the 1996–2004 are also presented. The dashed lines presented in (b) and (d) represent the bisector.

**Table 5.** Average values of the ‘observed’ (*sSMBglacio*) and simulated (*sSMBhydro*) glacier-wide summer surface mass balances of the Argenitière (including its tributaries) and Mer de Glace-Leschaux (including its tributaries) glaciers over the period 1996–2004

Glacier	<i>sSMBglacio</i> m w.e. a <sup>-1</sup>	<i>sSMBhydro</i> m w.e. a <sup>-1</sup>	
		Original SAFRAN	Adjusted SAFRAN
Argenitière	-2.62 ± 0.49	-2.79 ± 0.67	-2.33 ± 0.67
Mer de Glace-Leschaux	-2.68 ± 0.58	-2.00 ± 0.66	-1.55 ± 0.66

Argenitière and ±0.58 m w.e. a<sup>-1</sup> for Mer de Glace-Leschaux) (Table 5). The amount of water provided by the two glaciers can be considered as similar and therefore these glaciers appear to be characterized by the same glaciological behaviour.

In addition, the *wSMBglacio* data for both glaciers, used to calculate *sSMBglacio* (Eqn (7)), reproduce similar interannual variations over the study period. The winter budget is equal to +1.77 m w.e. a<sup>-1</sup> for Argenitière and +1.71 m w.e. a<sup>-1</sup> for Mer de Glace-Leschaux. The difference between these two series is smaller than their uncertainty (±0.29 m w.e. a<sup>-1</sup> for Argenitière and ±0.42 m w.e. a<sup>-1</sup> for Mer de Glace-Leschaux).

## 5.2. Glacier-wide summer surface mass balance from hydrological data

Hereafter we present a quantification of each term of the hydrological balance equation (Eqn (1)) using both the original and adjusted SAFRAN reanalysis during the summer season (JJAS) over the period 1996–2004 for the Arveyron d’Argenitière and Arveyron de la Mer de Glace catchments.

Over the period 1996–2004, the highest amounts of summer total precipitation occur in the 7th (between 2850 and 3150 m a.s.l.) and 8th band (between 3150 and 3450 m a.s.l.) of altitude for the Arveyron d’Argenitière and Arveyron de la Mer de Glace catchments, respectively. Over this period, the discharge produced by the total summer precipitation for the two considered catchments is similar in relation to their size. Over the study period, the average contribution to the outflow given by the total precipitation (original SAFRAN) equals 2.55 m<sup>3</sup> s<sup>-1</sup> (i.e. 0.84 m w.e. a<sup>-1</sup>) and 6.20 m<sup>3</sup> s<sup>-1</sup> (i.e. 0.82 m w.e. a<sup>-1</sup>) for the Arveyron d’Argenitière and Arveyron de la Mer de Glace catchments, respectively. On average, the multiplication factors used for the SAFRAN precipitation adjustment are 1.3 for Arveyron d’Argenitière and 1.4 for Arveyron de la Mer de Glace. For comparison, these values are slightly lower than those quantified by Gerbaux and others (2005) (1.5) for the Argenitière and Saint-Sorlin glaciers, Gottardi (2009) (1.6) for solid precipitation on the French Alps and Dumont and others (2012) (1.64) for the Saint-Sorlin glacier. It should be noted that the values for this factor depend on the calibration period and the site considered. On average, over the study period, the discharges produced by total summer precipitation obtained from the adjusted SAFRAN are 20% (i.e. 0.51 m<sup>3</sup> s<sup>-1</sup>) and 24% (i.e. 1.50 m<sup>3</sup> s<sup>-1</sup>) higher than those obtained using the original SAFRAN reanalysis for the Arveyron d’Argenitière and Arveyron de la Mer de Glace catchments, respectively. The difference of these rates is due

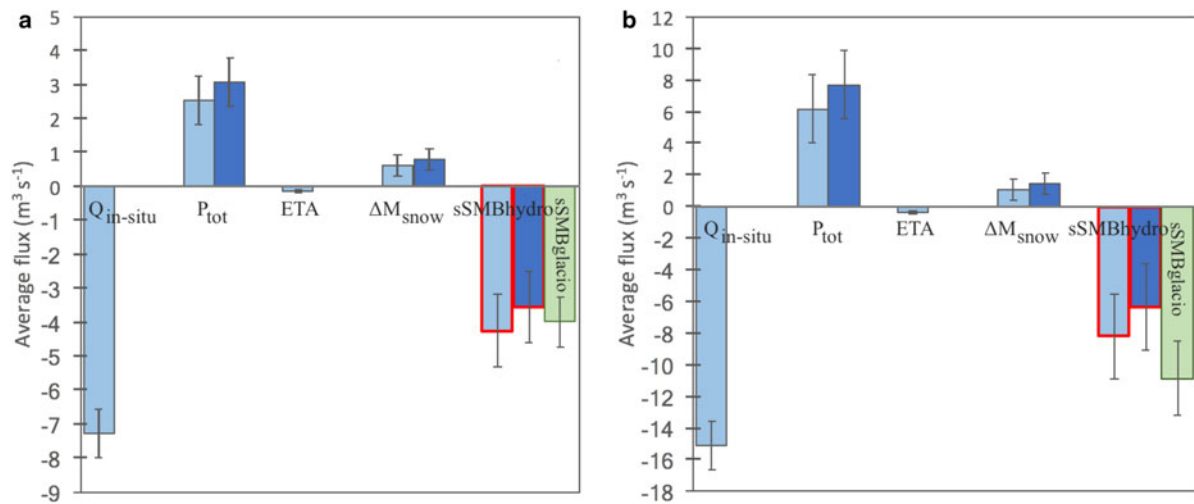
to the different spatial distribution of precipitation over the two considered catchments.

The highest values of summer *ETA* (Eqn (5)) are produced in the 4th band of altitude (between 1950 and 2250 m a.s.l.) for both the Arveyron d’Argenitière (0.03 m<sup>3</sup> s<sup>-1</sup>) and Arveyron de la Mer de Glace (0.09 m<sup>3</sup> s<sup>-1</sup>) catchments. It is interesting to note that, on average, the *ETA* rate (m w.e. a<sup>-1</sup>) is 27.2% (i.e. 0.031 m w.e. a<sup>-1</sup>) higher for Arveyron de la Mer de Glace, over the period 1996–2004. This could be because this catchment is characterized by a greater expanse of forested area related to Arveyron d’Argenitière (3.7% vs 2.3%, respectively) and by a wider expanse of lower areas with higher temperature. The difference between the *ETA* for the two catchments remains constant over the whole period.

Over the study period, on average, the contribution to the discharge given by the winter snow melt (Eqn (6)) outside of the glacierized area during the summer months is estimated (original SAFRAN) to be equal to 0.6 m<sup>3</sup> s<sup>-1</sup> (i.e. 0.42 m w.e. a<sup>-1</sup>) and 1.1 m<sup>3</sup> s<sup>-1</sup> (i.e. 0.31 m w.e. a<sup>-1</sup>) for the Arveyron d’Argenitière and Arveyron de la Mer de Glace catchments, respectively. These values increase by 30% (i.e. 0.18 m<sup>3</sup> s<sup>-1</sup>) for Arveyron d’Argenitière and 34% (i.e. 0.36 m<sup>3</sup> s<sup>-1</sup>) for Arveyron de la Mer de Glace when the adjusted SAFRAN precipitation amounts are used instead of the original data.

After quantifying all the contributions, the glacier-wide summer surface mass balance based on hydrological data (Eqn (1)) can be estimated for each glacier using the original and adjusted SAFRAN reanalysis (Fig. 6). Ice and snow melt from glacierized areas are clearly one of the main contributors to summer runoff. On average, the contributions of the *sSMBhydro* to the discharge, using the original (adjusted) SAFRAN values, are estimated to be 58% (49%) for Arveyron d’Argenitière and 54% (42%) for Arveyron de la Mer de Glace. The amount of water loss through evapotranspiration represents ~6% (5%) of the summer total precipitation calculated using the original (adjusted) SAFRAN values for both the Arveyron d’Argenitière and Arveyron de la Mer de Glace catchments. The contribution given by the summer total precipitation calculated with the original (adjusted) SAFRAN values represents 35% (42%) of the discharge for the Arveyron d’Argenitière catchment and 41% (51%) for the Arveyron de la Mer de Glace catchment. The snow melt runoff (outside the glacier) represents 9% (11%) and 7% (9%) of the total summer discharge, respectively, for the Arveyron d’Argenitière and Arveyron de la Mer de Glace catchments. The observed inter-annual variations in summer discharge from the two catchments are almost similar over the period 1996–2004 (not shown here).

The standard uncertainties of the terms involved in the hydrological balance equation are listed in Table 6. The average standard uncertainties for *sSMBhydro* are equal to ±1.06 m<sup>3</sup> s<sup>-1</sup> (i.e. ±0.67 m w.e. a<sup>-1</sup>) for Argenitière and ±2.71 m<sup>3</sup> s<sup>-1</sup> (i.e. ±0.66 m w.e. a<sup>-1</sup>) for Mer de Glace-Leschaux. The greatest errors affecting *sSMBhydro*, in terms of m<sup>3</sup> s<sup>-1</sup>, are introduced by precipitation and discharge measurements, i.e. 0.71 m<sup>3</sup> s<sup>-1</sup> and 0.73 m<sup>3</sup> s<sup>-1</sup> for Argenitière and 2.14 m<sup>3</sup> s<sup>-1</sup> and 1.51 m<sup>3</sup> s<sup>-1</sup> for Mer de Glace-Leschaux (Fig. 6 and Table 6). The daily standard uncertainty estimated for precipitation is almost the same as that quantified by Quintana-Seguí and others (2008) for the SAFRAN precipitation over France (2.3 mm d<sup>-1</sup> for the Arveyron d’Argenitière and 2.4 mm d<sup>-1</sup> for the Arveyron de la Mer de Glace vs 2.4 mm d<sup>-1</sup>).



**Fig. 6.** Hydrological balance for the (a) Arveyron d'Argentière and (b) Arveyron de la Mer de Glace catchments. Light and dark blue bars represent the average summer flux of the variables involved in the hydrological balance equation (in situ stream outflow ( $Q_{in-situ}$ ), total precipitation ( $P_{tot}$ ), actual evapotranspiration ( $ETA$ ) and snow melt runoff ( $\Delta M_{snow}$ )) calculated using the original and adjusted SAFRAN reanalysis, respectively, over the period 1996–2004. Red contours highlight the two  $sSMB_{hydro}$  estimates for the glaciers considered. Green bars represent the  $sSMB_{glacio}$  values. Vertical black lines represent the standard uncertainties.

## 6. DISCUSSION

For the Argentière glacier, a small difference can be noted when comparing the average  $sSMB_{hydro}$  and  $sSMB_{glacio}$  values over the 1996–2004 period (Fig. 6a). The simulated values using the original SAFRAN reanalysis are more negative than the  $sSMB_{glacio}$  values by 12% ( $-2.79$  m w.e.  $a^{-1}$  vs  $-2.62$  m w.e.  $a^{-1}$ ) while those obtained from the adjusted SAFRAN are less negative by 6% ( $-2.33$  m w.e.  $a^{-1}$  vs  $-2.62$  m w.e.  $a^{-1}$ ) (Table 5). The evolution of the  $sSMB_{hydro}$  values over the considered period is in good agreement with the  $sSMB_{glacio}$  values, showing almost the same inter-annual variability (Fig. 5a). The correlations between the  $sSMB_{glacio}$  dataset and the two estimates of  $sSMB_{hydro}$  are significant at 99% confidence interval according to the Pearson's test ( $R^2 > 0.81$ ) (Fig. 5b). We can conclude that the difference between the  $sSMB_{glacio}$  calculation and the two  $sSMB_{hydro}$  estimates for the Argentière glacier is comprised in their measurement uncertainties, equal to  $\pm 0.49$  m w.e.  $a^{-1}$  on the former and  $\pm 0.67$  m w.e.  $a^{-1}$  on the latter (Table 5). As a consequence, the two estimates of the

summer surface mass balance using the hydrological and glaciological data are in good agreement.

In the case of the Mer de Glace-Leschaux glacier, the  $sSMB_{hydro}$  values quantified from the original and adjusted SAFRAN data are less negative than the  $sSMB_{glacio}$  values by 24% ( $-2.00$  m w.e.  $a^{-1}$  vs  $-2.68$  m w.e.  $a^{-1}$ ) and 41% ( $-1.55$  m w.e.  $a^{-1}$  vs  $-2.68$  m w.e.  $a^{-1}$ ), respectively (Table 5). As for the Argentière glacier, the correlations between the  $sSMB_{glacio}$  dataset and the two estimates of  $sSMB_{hydro}$  for Mer de Glace-Leschaux are significant at 99% confidence (Pearson's test) ( $R^2 > 0.72$ ) (Fig. 5d). In this case, although the uncertainty ranges overlap ( $\pm 0.66$  m w.e.  $a^{-1}$  on the  $sSMB_{hydro}$  data and  $\pm 0.58$  m w.e.  $a^{-1}$  on the  $sSMB_{glacio}$  data) (Fig. 5c), the marked difference between the  $sSMB_{hydro}$  and  $sSMB_{glacio}$  values probably also results from another source. It could be attributed to the presence of aquifers and subterranean fluxes in the Arveyron de la Mer de Glace catchment that prevents the transfer of the totality of the liquid water to the outlet of the catchment. Thus, we can hypothesize that the groundwater term (see Eqn (3)) cannot

**Table 6.** Standard uncertainties ( $\sigma$ ) ( $m^3 s^{-1}$  and m w.e.  $a^{-1}$ ) for the variables involved in the hydrological balance equation ( $Q_{in-situ}$ ,  $P_{tot}$ ,  $ETA$ ,  $\Delta M_{snow}$ ), the simulated glacier-wide summer surface mass balance ( $sSMB_{hydro}$ ) obtained in the case of the original and the adjusted SAFRAN reanalysis, the glacier-wide winter surface mass balance ( $wSMB_{glacio}$ ), the glacier-wide annual surface mass balance ( $aSMB_{glacio}$ ) and the 'observed' glacier-wide summer surface mass balance ( $sSMB_{glacio}$ )

	Arv. d'Argentière / Argentière				Arv. De la Mer de Glace / Mer de Glace-Leschaux			
	Original SAFRAN		Adjusted SAFRAN		Original SAFRAN		Adjusted SAFRAN	
	$m^3 s^{-1}$	m w.e. $a^{-1}$	$m^3 s^{-1}$	m w.e. $a^{-1}$	$m^3 s^{-1}$	m w.e. $a^{-1}$	$m^3 s^{-1}$	m w.e. $a^{-1}$
$\sigma_{Q_{in-situ}}$	0.73	0.24	–	–	1.51	0.20	–	–
$\sigma_{P_{tot}}$	0.71	0.23	0.71	0.23	2.14	0.28	2.14	0.28
$\sigma_{ETA}$	0.03	0.02	–	–	0.08	0.02	–	–
$\sigma_{\Delta M_{snow}}$	0.30	0.20	0.30	0.20	0.68	0.20	0.68	0.20
$\sigma_{sSMB_{hydro}}$	1.06	0.67	1.06	0.67	2.71	0.66	2.71	0.66
$\sigma_{aSMB_{glacio}}$	0.20	0.40	/	/	0.54	0.40	/	/
$\sigma_{wSMB_{glacio}}$	0.22	0.29	/	/	0.86	0.42	/	/
$\sigma_{sSMB_{glacio}}$	0.75	0.49	/	/	2.36	0.58	/	/

be neglected in the Arveyron de la Mer de Glace catchment. We might expect that the measured discharge from the Arveyron de la Mer de Glace catchment underestimates the real water production of the catchment, leading to an underestimation of the *sSMBhydro* value for the Mer de Glace-Leschaux glacier. By observing the network of fractures located in the upper Arve watershed (Fig. 1d), we can notice that they are mainly concentrated in the Arveyron de la Mer de Glace catchment. They are NE-SW and N-S oriented and can drive the subterranean fluxes southward, outside of the topographic catchment. The abundance of open fractures actually leads to a relatively higher permeability of the ground, compared with that of undisturbed crystalline rocks (Kilchmann, 2001). The real existence of deep large groundwater fluxes within the Mont Blanc massif has already been demonstrated through studies carried out on water inflows during the drilling of the Mont Blanc road tunnel (Maréchal, 1998, 2000, 2012; Rolland and others, 2003). The zones characterized by high water inflows are accompanied by a decrease in the water temperature, due to the large cold water infiltration from the glaciers. The water inflows are also recharged by snow melt at the beginning of summer on the Glacier du Géant and more probably on the Glacier de Toule (Maréchal, 2000), which are located in the Arveyron de la Mer de Glace catchment. On the other hand, observing the geological map (Fig. 1d), it can be noted that in the lower part of the Arveyron de la Mer de Glace catchment there is a significant amount of alluvial soils that do not exist in the Arveyron d'Argentière catchment, which likely facilitates the movement of groundwater into local shallow aquifers.

The adjustment of precipitation does not lead to a clear improvement of the computation of the *sSMBhydro* (Figs 5 and 6). For the Argentière glacier the two estimates of the summer surface mass balance, with and without precipitation adjustment, are respectively a little higher and a little lower than what the glaciological data suggest. In the case of Mer de Glace glacier, it seems that the adjustment leads in the wrong direction compared with the glaciological values. This simply means that this catchment might lose an important water amount through groundwater flows. Since SAFRAN reanalysis yields an underestimation of winter precipitation, the adjustment is made to reproduce the observed spatial distribution of the winter accumulation.

## 7. CONCLUSION

The comparison between the glaciological summer mass balances and the runoff measurements shows that the water provided by the two glaciers, including snow and ice melt, can be considered as the main contributor of summer runoff. After the quantification of all components of the summer hydrological balance equation for each study catchment, it can be seen that the contributions of the simulated glacier-wide summer surface mass balance obtained using the original and adjusted SAFRAN data to the discharge are estimated to be 58% and 49% for the Arveyron d'Argentière catchment and 54% and 42% for the Arveyron de la Mer de Glace catchment. In the two catchments, the volume of evapotranspiration remains small and does not strongly impact the hydrological balance.

The spatial distribution of precipitation within the considered catchments is adjusted using in situ winter mass balance measurements. The multiplication factors applied to the original SAFRAN data, estimated from the point winter glaciological

surface mass-balance measurements, revealed that the precipitation amount that falls over the Arveyron de la Mer de Glace catchment is slightly higher than that over the Arveyron d'Argentière catchment on average (1.4 vs 1.3, respectively).

The standard uncertainty of the Argentière glacier-wide summer surface mass balance based on hydrological data are equal to  $\pm 0.67$  m w.e.  $a^{-1}$  over the 1996–2004 period. The differences between the glacier-wide summer glaciological surface mass balance and the two estimates of the hydrological glacier-wide summer surface mass balance, computed with and without adjusted precipitation values, are not significant and can be justified by the measurement uncertainties. In addition, the summer mass balances quantified from the hydrological and glaciological data show almost the same interannual variability. In the case of the Mer de Glace-Leschaux glacier, the average error of the glacier-wide summer surface mass balance based on hydrological data are equal to  $\pm 0.66$  m w.e.  $a^{-1}$ . The two estimates of the glacier-wide summer surface mass balance based on hydrological data are less negative than the summer mass balances quantified from glaciological data. This difference cannot be explained by the measurement uncertainties alone and therefore it can be hypothesized that in the Arveyron de la Mer de Glace catchment the groundwater term of the hydrological balance equation cannot be neglected and that the measured discharge underestimates the real water production of the catchment. The presence of aquifers and subterranean fluxes could prevent the transfer of all of the liquid water to the outlet, leading to an underestimation of the glacier-wide summer surface mass balance for Mer de Glace-Leschaux. Further investigations are needed in order to quantify these subterranean water fluxes.

The precipitation adjustment does not improve the computation of the glacier-wide summer surface mass balance based on the hydrological data, for both Argentière and Mer de Glace glaciers. The results point out the important loss of water through groundwater flows in the Arveyron de la Mer de Glace catchment. Substantially, the adjustment of the SAFRAN reanalysis allows for a better reproduction of the spatial distribution of the winter accumulation.

In essence, this study underlines the importance of estimating the groundwater fluxes and taking them into account when they are not negligible, for a comprehensive assessment of the present and future hydro-glaciological behaviour of a catchment.

## ACKNOWLEDGEMENTS

This study was conducted in the context of a research project to develop a flood forecasting system in the Arve catchment (funded by the SM3A). The authors acknowledge the French glacier observatory GLACIOCLIM (<https://glacioclim.osug.fr>) and the Labex OSUG@2020 (Investissements d'avenir – ANR10 LABX56). We thank CNRM/CEN (Météo-France and CNRS) for providing the SAFRAN reanalysis data and in situ snow depth data; Frederic Gottardi (EDF/DTG) for providing the hydrological data. We are grateful to R. Ranzi, O. Laarman and C. Coulaud for fruitful discussions and to S. Morin for his constructive and useful comments. We thank all those who collected data from field measurements on the two glaciers as well as meteorological and snow observations used for this study. Finally, we are very grateful to the two anonymous reviewers for their comments and

suggestions that have improved greatly the quality of the manuscript.

## REFERENCES

- Barnett TP, Adam JC and Lettenmaier DP (2005) Potential impacts of a warming climate on water availability in snow-dominated regions. *Nature*, **438**(7066), 303–309 (doi: 10.1038/nature04141)
- Berthier E and 10 others (2014) Glacier topography and elevation changes derived from pléiades sub-meter stereo images. *Cryosphere*, **8**(6), 2275–2291 (doi: 10.5194/tc-8-2275-2014)
- Birman C and 7 others (2017) Precipitation analysis over the French Alps using a variational approach and study of potential added value of ground-based radar observations. *J. Hydrometeorol.*, **18**, 1425–1451 (doi: 10.1175/JHM-D-16-0144.1)
- Bucher K, Kerschner H, Lumasegger M, Mergili M and Rastner P (2004) Spatial Precipitation Modelling for the Tyrol Region. Institut für Geographie, Univ. Innsbruck, S 1-5 <http://tirolatlas.uibk.ac.at>
- Carturan L, Fontana GD and Borga M (2012) Estimation of winter precipitation in a high-altitude catchment of the Eastern Italian Alps: validation by means of glacier mass balance observations. *Geogr. Fis. Dinam. Quat.*, **35**(1), 37–48 (doi: 10.4461/GFDQ.2012.35.4)
- Church JA and 13 others (2013) Sea level change. In Stocker TF, Qin D, Plattner G-K, Tignor M, Allen SK, Boschung J, Nauels A, Xia Y, Bex V and Midgley PM eds. *Climate change 2013: the physical science basis. Contribution of working group I to the fifth assessment report of the intergovernmental panel on climate change*. Cambridge University Press, Cambridge, United Kingdom and New York, NY, USA, 1137–1216 (doi: 10.1017/CBO9781107415324.026)
- Cogley JG and 10 others (2011) Glossary of Glacier Mass Balance and Related Terms, IHP-VII Technical Documents in Hydrology No. 86, IACS Contribution No. 2, UNESCO-IHP, Paris
- Corbin P and Oulianoff N (1930) Notice explicative de la Carte Géologique du Massif du Mont Blanc (partie française) à l'échelle du 1/20 000 - Feuille Vallorcine. *Notice+Carte Géologique Au 1/20 000*
- Courtier P, Freyder C, Geleyn JF, Rabier F and Rochas M (1991) The arpegge project at Météo-France. In *Proceedings of the ECMWF Seminar on Numerical Methods in Atmospheric Models*, Vol. 2, 9–13 September 1991. Reading, England, European Centre for Medium Range Weather Forecasts, 193–323
- Dahlke HE, Lyon SW, Stedinger JR, Rosqvist G and Jansson P (2012) Contrasting trends in floods for two sub-Arctic catchments in northern Sweden - does glacier presence matter? *Hydrol. Earth System Sci.*, **16**(7), 2123–2141 (doi: 10.5194/hess-16-2123-2012)
- Dubois JD (1992) *Typologie des aquifères du cristallin: exemple des massifs des Aiguilles rouges et du Mont-blanc (France, Italie et Suisse)*. Ph.D. Thesis No. 950. École polytechnique fédérale de Lausanne. 324 pp
- Dumont M, Durand Y, Arnaud Y and Six D (2012) Variational assimilation of albedo in a snowpack model and reconstruction of the spatial mass-balance distribution of an alpine glacier. *J. Glaciol.*, **58**(207), 151–164 (doi: 10.3189/2012JoG11J163)
- Durand Y (1985) The use of satellite data in the French high resolution analysis. In *ECMWF Workshop on High Resolution Analysis*, 24–26 June 1985. Reading, England, European Centre for Medium Range Weather Forecasts, 89–128
- Durand Y and 5 others (1993) A meteorological estimation of relevant parameters for snow models. *Ann. Glac.*, **18**, 65–71
- Durand Y, Giraud G, Brun E, Mérimond L and Martin E (1999) A computer-based system simulating snowpack structures as a tool for regional avalanche forecasting. *J. Glaciol.*, **45**(151), 469–484 (doi: 10.1109/CBMS.2009.5255250)
- Durand Y and 5 others (2009) Reanalysis of 44 yr of climate in the French Alps (1958–2002): methodology, model validation, climatology, and trends for air temperature and precipitation. *J. Appl. Meteorol. Climatol.*, **48**(3), 429–449 (doi: 10.1175/2008JAMC1808.1)
- EEA (2007) CLC2006 technical guidelines, *EEA Technical Report No. 2007/17*, 1–70 (doi: 10.2800/12134)
- FAO (1998) Crop evapotranspiration - guidelines for computing crop water requirements. *FAO Irrigation and Drainage Paper* (No. 56) (doi: 10.1016/j.eja.2010.12.001)
- Fu P and Rich PM (1999) Design and implementation of the Solar Analyst: an ArcView extension for modeling solar radiation at landscape scales. Proceedings of the Nineteenth Annual ESRI User Conference
- Fu P and Rich PM (2002) A geometric solar radiation model and its applications in agriculture and forestry. Proceedings of the Second International Conference on Geospatial Information in Agriculture and Forestry. I-357-364 (doi: 10.1016/S0168-1699(02)00115-1)
- Gardent M, Rabatel A, Dedieu JP and Deline P (2014) Multitemporal glacier inventory of the French Alps from the late 1960s to the late 2000s. *Glob. Planet. Change*, **120**, 24–37 (doi: 10.1016/j.gloplacha.2014.05.004)
- Gerbaux M, Genthon C, Etchevers P, Vincent C and Dedieu JP (2005) Surface mass balance of glaciers in the French Alps: distributed modeling and sensitivity to climate change. *J. Glaciol.*, **51**(175), 561–572 (doi: 10.3189/172756505781829133)
- Gottardi F (2009) *Estimation statistique et réanalyse des précipitations en montagne. Utilisation d'ébauches par types de temps et assimilation des données d'enneigement. Application aux grands massifs montagneux français*. Hydrologie. Institut National Polytechnique de Grenoble - INPG. Français
- Haeberli W (1995) Glacier fluctuations and climate change detection. *Geogr. Fis. Dinam. Quat.*, **18**, 191–199
- Haeberli W (2005) Mountain glaciers in global climate-related observing systems. In Huber UM, Bugmann HKM, Reasoner MA eds. *Global change and mountain regions. Advances in global change research*, **23**, 169–175. Springer, Dordrecht.
- Hagemann S, Arpe K and Bengtsson L (2009) Validation of the hydrological cycle of ERA-40, *ERA-40 Project Report Series No. 24*, 1–42
- Hall DK, George AR and Vincent VS (2006) Updated daily. MODIS/Terra Snow Cover Daily L3 Global 500 m Grid V005. Boulder, Colorado USA: National Snow and Ice Data Center. Digital media
- Immerzeel WW, Beek LPH, Konz M, Shrestha AB and Bierkens MFP (2012) Hydrological response to climate change in a glacierized catchment in the Himalayas. *Clim. Change*, **110**, 721–736 (doi: 10.1007/s10584-011-0143-4)
- International Organization for Standardization (2007a) *Hydrometry – velocity-area methods using current-meters – collection and processing of data for determination of uncertainties in flow measurement*. ISO 1088, Geneva
- International Organization for Standardization (2007b) *Measurement of liquid flow in open channels using current-meters or floats*. ISO 748, Geneva
- Jamier D (1975) Etude de la fissuration, de l'hydrologie et de la géochimie des eaux profondes des massifs de l'Arpille et du Mont Blanc. *Tectonics. Université de Lausanne, French*
- Jansson P, Hock R and Schneider T (2003) The concept of glacier storage: a review. *J. Hydrol.*, **282**(1–4), 116–129 (doi: 10.1016/S0022-1694(03)00258-0)
- Johannesson T (1997) The response of two Icelandic glaciers to climatic warming computed with a degree-day glacier mass-balance model coupled to a dynamic glacier model. *J. Glaciol.*, **43**(144), 321–327
- Just G, Moore RD, Menounos B and Wheate R (2012) Quantifying the contribution of glacier runoff to streamflow in the upper Columbia River Basin, Canada. *Hydrol. Earth System Sci.*, **16**(3), 849–860 (doi: 10.5194/hess-16-849-2012)

- Kilchmann S (2001) *Typology of recent groundwaters from different aquifer environments based on geogenic tracer elements*. Ph.D. Thesis No. 2411. École polytechnique fédérale de Lausanne, 254pp
- Koboltschnig GR, Schoner W, Zappa M, Kroisleitner C and Hubert H (2008) Runoff modelling of the glacierized alpine upper salzach basin (Austria): multi-criteria result validation. *Hydrol. Process.*, **22**, 3950–3964 (doi: 10.1002/hyp.7112)
- Konzelmann T, Calanca P, Müller G, Menzel L and Lang H (1997) Energy balance and evapotranspiration in a high mountain area during summer. *J. Appl. Meteorol.*, **36**, 966–973 (doi: 10.1175/1520-0450(1997)036<0966:EBAEIA>2.0.CO;2)
- Lliboutry L (1974) Multivariate statistical analysis of glacier annual balances. *J. Glaciol.*, **13**(69), 371–392 (doi:10.1017/S0022143000023169)
- Maréchal JC (1998) *Les circulations d'eau dans les massifs cristallins alpins et leurs relations avec les ouvrages souterrains*. Ph.D. Thesis No. 1796. École polytechnique fédérale de Lausanne, 1–296
- Maréchal JC (2000) Massif du Mont-Blanc: identification d'une structure géologique majeure. *La Houille Blanche, Société Hydrotechnique de France*, **6**, 78–86
- Maréchal JC (2012) Les tunnels alpins: observatoires de l'hydrogéologie des grands massifs montagneux. *La Houille Blanche, Société Hydrotechnique de France*, **1**, 44–50 (doi: 10.1051/lhb/2012007)
- Marzeion B, Jarosch AH and Hofer M (2012) Past and future sea-level change from the surface mass balance of glaciers. *Cryosphere*, **6**, 1295–1322 (doi: 10.5194/tc-6-1295-2012)
- Morton FI (1983) Operational estimates of areal evapotranspiration and their significance to the science and practice of hydrology. *J. Hydrol.*, **66**, 1–76
- Oerlemans J (1986) Glaciers as indicators of a carbon dioxide warming. *Nature*, **320**(6063), 607–609 (doi: 10.1038/320607a0)
- Oudin L and 6 others (2005) Which potential evapotranspiration input for a lumped rainfall-runoff model? Part 2 - towards a simple and efficient potential evapotranspiration model for rainfall-runoff modelling. *J. Hydr.*, **303**(1–4), 290–306 (doi: 10.1016/j.jhydrol.2004.08.026)
- Paterson WSB (1994) *The physics of glaciers*, 3<sup>th</sup> edn. Butterworth-Heinemann, Oxford
- Quintana-Seguí and 8 others (2008) Analysis of near-surface atmospheric variables: validation of the SAFRAN analysis over France. *J. Appl. Meteorol. Climatol.*, **47**(1), 92–107 (doi: 10.1175/2007JAMC1636.1)
- Rabatel A, Letréguilly A, Dedieu JP and Eckert N (2013) Changes in glacier equilibrium-line altitude in the western Alps from 1984 to 2010: evaluation by remote sensing and modeling of the morpho-topographic and climate controls. *Cryosphere*, **7**(5), 1455–1471 (doi: 10.5194/tc-7-1455-2013)
- Rabatel A, Dedieu JP and Vincent C (2016) Spatio-temporal changes in glacier-wide mass balance quantified by optical remote sensing on 30 glaciers in the French Alps for the period 1983–2014. *J. Glaciol.*, **62** (236), 1153–1166 (doi: 10.1017/jog.2016.113)
- Réveillet M, Vincent C, Six D and Rabatel A (2017) Which empirical model is best suited to simulate glacier mass balances? *J. Glaciol.*, **63**(237), 39–54 (doi: 10.1017/jog.2016.110)
- Rich PM, Dubayah R, Hetrick WA and Saving SC (1994) Using watershed models to calculate intercepted solar radiation: applications in ecology. *Am. Soc. Photogrammetry Remote Sens. Tech. Papers*, **1**, 524–529
- Rolland Y, Cox S, Boullier AM, Pennacchioni G and Mancktelow N (2003) Rare earth and trace element mobility in mid-crustal shear zones: insights from the Mont Blanc Massif (Western Alps). *Earth Planet. Sci. Lett.*, **214**(1–2), 203–219 (doi: 10.1016/S0012-821X(03)00372-8)
- Rossi M and Rolland Y (2014) Stable isotope and Ar/Ar evidence of prolonged multiscale fluid flow during exhumation of orogenic crust: example from the mont blanc and Aar Massifs (NW Alps). *Tectonics*, **33**(9), 1681–1709 (doi: 10.1002/2013TC003438)
- Salomonson VV and Appel I (2004) Estimating fractional snow cover from MODIS using the normalized difference snow index. *Remote Sens. Environ.*, **89**(3), 351–360 (doi: 10.1016/j.rse.2003.10.016)
- Six D and Vincent C (2014) Sensitivity of surface mass balance and equilibrium-line altitude to climate change in the French Alps. *J. Glaciol.*, **60**(223), 867–878 (doi: 10.3189/2014JG14J014)
- Six D, Wagnon P, Sicart JE and Vincent C (2009) Meteorological controls on snow and ice ablation for two very contrasted months on Saint-Sorlin Glacier (France). *Ann. Glaciol.*, **50**, 66–72 (doi: 10.3189/172756409787769537)
- Vaughan DG and 13 others (2013) Observations: Cryosphere. In *Climate Change 2013: The Physical Science Basis. Contribution of Working Group I to the Fifth Assessment Report of the Intergovernmental Panel on Climate Change*. Stocker TF, Qin D, Plattner G-K, Tignor M, Allen SK, Boschung J, Nauels A, Xia Y, Bex V and Midgley PM eds. Cambridge University Press, Cambridge, United Kingdom and New York, NY, USA, pp. 317–382 (doi: 10.1017/CBO9781107415324.012)
- Verbunt M and 5 others (2003) The hydrological role of snow and glaciers in alpine river basins and their distributed modeling. *J. Hydrol.*, **282**(1–4), 36–55 (doi: 10.1016/S0022-1694(03)00251-8)
- Vincent C, Soruco A, Six D and Meur ELE (2009) Glacier thickening and decay analysis from 50 years of glaciological observations performed on Glacier d'Argentière, Mont Blanc area, France. *Ann. Glaciol.*, **50**(50), 73–79 (doi: 10.3189/172756409787769500)
- Vincent C, Harter M, Gilbert A, Berthier E and Six D (2014) Future fluctuations of Mer de Glace, French Alps, assessed using a parameterized model calibrated with past thickness changes. *Ann. Glaciol.*, **55**(66), 15–24 (doi: 10.3189/2014AoG66A050)
- Vincent C and 9 others (2017) Common climatic signal from glaciers in the European Alps over the last 50 years. *Geophys. Res. Lett.*, **44**, 1376–1383 (doi: 10.1002/2016GL072094)
- Vionnet V and 5 others (2016) Numerical weather forecasts at kilometer scale in the French Alps: evaluation and application for snowpack modeling. *J. Hydrometeorol.*, **17**, 2591–2614 (doi: 10.1175/JHM-D-15-0241.1)
- Viviroli D and Weingartner R (2004) The hydrological significance of mountains: from regional to global scale. *Hydrol. Earth System Sci.*, **8**(6), 1017–1030 (doi: 10.5194/hess-8-1017-2004)
- Viviroli D, Dürr HH, Messerli B, Meybeck M and Weingartner R (2007) Mountains of the world, water towers for humanity: typology, mapping, and global significance. *Water Resour. Res.*, **43**(7), 1–13 (doi: 10.1029/2006WR005653)
- Viviroli D and 15 others (2011) Climate change and mountain water resources: overview and recommendations for research, management and policy. *Hydrol. Earth Syst. Sci.*, **15**(2), 471–504 (doi: 10.5194/hess-15-471-2011)
- World Meteorological Organization (2010) *Manual on stream gauging*. Vol. I: Fieldwork. WMO-No. 1044, World Meteorological Organization, Geneva

MS received 23 August 2017 and accepted in revised form 15 January 2018