



HAL
open science

Modeling urban waters using TONIC model in large metropolitan areas: comparison between Lyon (France) and Ho Chi Minh City (Vietnam)

Julien Némery, H el ene Hc Castebrunet, Violeta A. Montoya-Coronado, Tq Thuong, A. Michel, Gislain Lipeme Kouyi, Pascal Molle, At Nguyen, P. D. Nguyen, Xt Bui, et al.

► To cite this version:

Julien N emery, H el ene Hc Castebrunet, Violeta A. Montoya-Coronado, Tq Thuong, A. Michel, et al.. Modeling urban waters using TONIC model in large metropolitan areas: comparison between Lyon (France) and Ho Chi Minh City (Vietnam). International symposium on water sustainability and green technologies, Nov 2022, Ho Chi Minh City, Vietnam. . <hal-04377213>

HAL Id: hal-04377213

<https://hal.science/hal-04377213v1>

Submitted on 7 Jan 2024

HAL is a multi-disciplinary open access archive for the deposit and dissemination of scientific research documents, whether they are published or not. The documents may come from teaching and research institutions in France or abroad, or from public or private research centers.

L'archive ouverte pluridisciplinaire **HAL**, est destin ee au d ep ot et  a la diffusion de documents scientifiques de niveau recherche, publi es ou non,  emanant des  tablissements d'enseignement et de recherche fran ais ou  trangers, des laboratoires publics ou priv es.



Distributed under a Creative Commons CC BY-NC-SA 4.0 - Attribution - Non-commercial use - ShareAlike - International License

Modeling urban waters using TONIC model in large metropolitan areas: comparison between Lyon (France) and Ho Chi Minh City (Vietnam)

Introduction

- In a context of climate change and densification of urban centers, large cities have to deal with water management (storm overflows, pollutants loads, impacts on the environment). To make cities more resilient to global change, alternative management through **Nature-Based Solution (NBS)** seems inevitable to achieve environmental and socio-economic goals (Masi et al 2018).

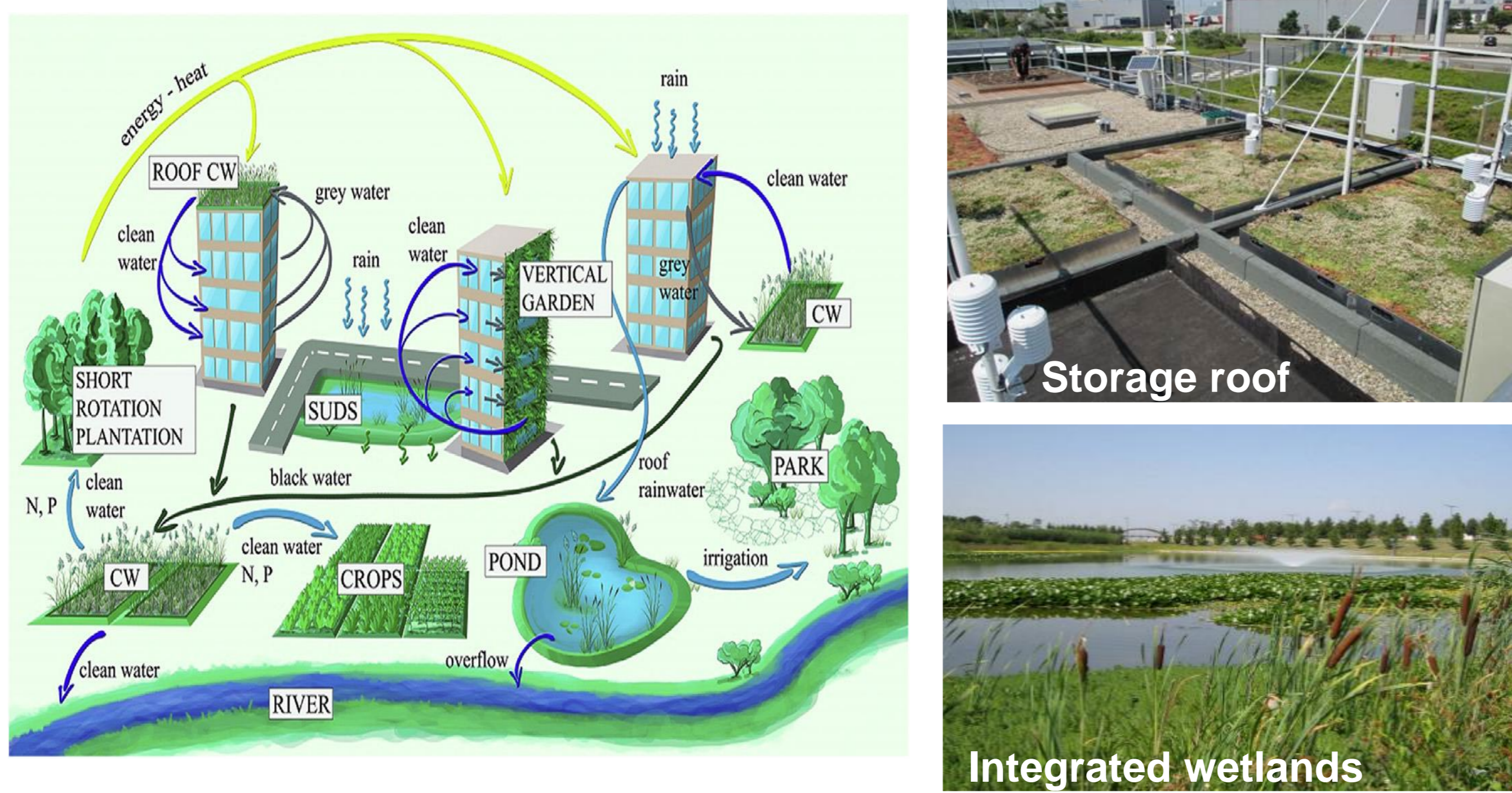


Figure 1 : Rethink the future management of urban waters (illustration Masi et al 2018)

- The aim of the study is to compare **CSO mitigation** in two contrasted large cities by means of **testing scenarios of disconnection with NBS**
- Lyon City** : is drained mainly by a centralized urban water system. Today, the city of Lyon is invested in the development of alternative urban water management by promoting rainwater management at the source through NBS. The city plans to convert 400 ha of impervious area to permeable one by 2026.
- Ho Chi Minh City** : the economic capital of Vietnam is in full demographic and economic expansion. The deterioration of water quality is extreme due to a lack of wastewater management strategy. Ho Chi Minh City plans to implement the centralized urban water management system. The relevance of this extremely expensive centralized sewer system choice has to be investigated. Such a system is not necessarily adapted to the particular conditions of this megacity in tropical monsoon zone.

Modelling approach

- The TONIC model (**Tools for green resilient Cities**) is a simplified hydrological and hydraulic model developed in the laboratory DEEP (**INSA Lyon France**) to provide to municipalities a decision support tool for selecting urban water management strategies based on the implementation of NBS for stormwater management (Figure 2).
- The implementation of the model requires description of the watershed (percentage of impervious surface), geometry of the sewer system (diameter, length, slope, number, dimensions of CSO structures or an operating law) and inputs data (population, water per capita, rainfall, infiltration rate).
- The TONIC model works in two phases i) the production phase: simulates the wastewater, runoff water and infiltrated water from surrounding soil ii) the transfer phase that routes the total discharge into the pipes. After a calibration step, the outputs model allows to get the total discharge within the sewer pipes and the total volume and number of spills.

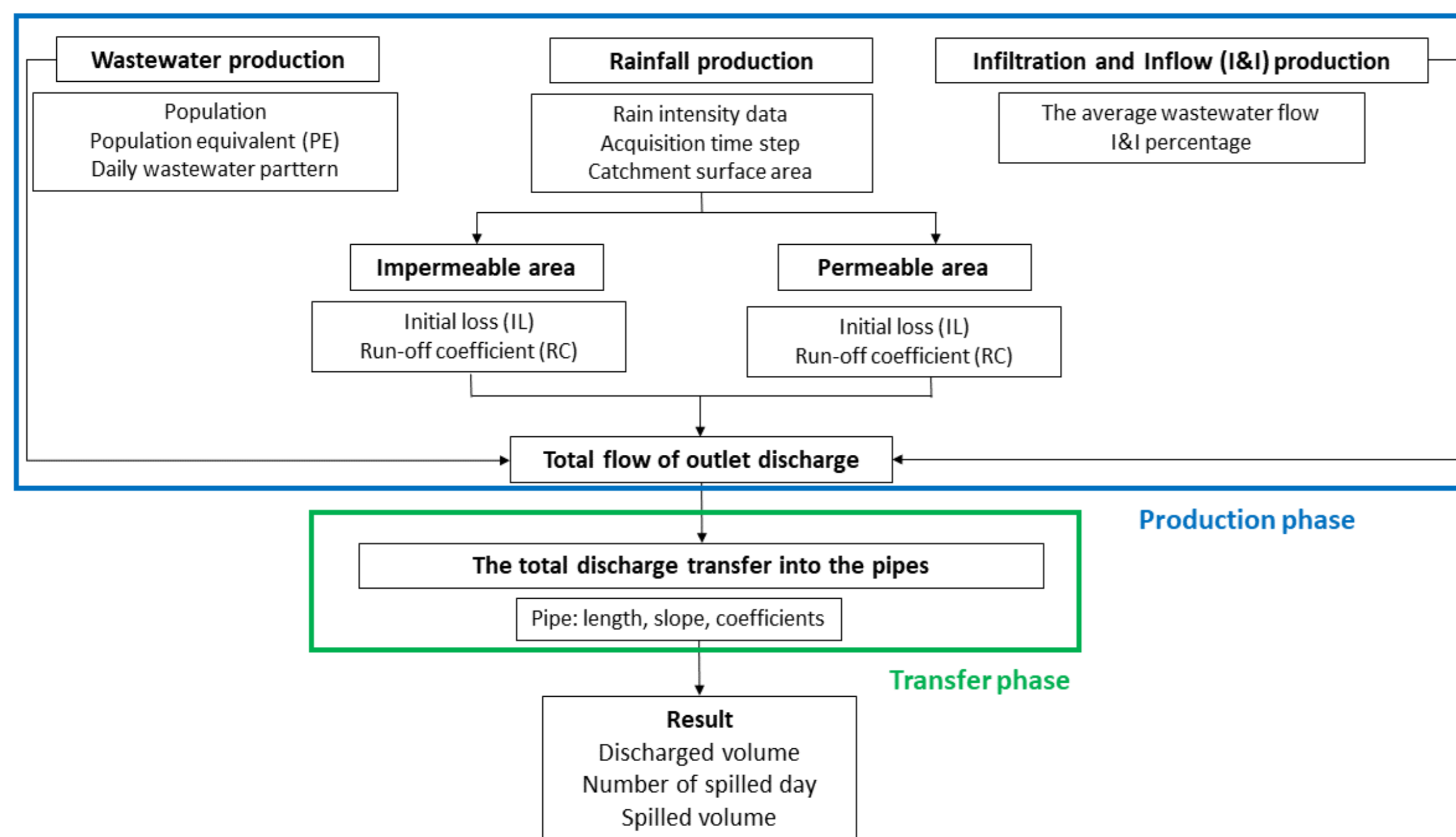


Figure 2 : Flowchart of the TONIC model (from Montoya-Coronado PhD)

References :

- Nguyen TTN et al (2020) Nutrient budgets in the Saigon–Dongnai River basin: Past to future inputs from the developing Ho Chi Minh megacity (Vietnam). *River Research and Application* 36(6) : 974-990
- Masi F et al (2018) The role of constructed wetlands in a new circular economy, resource oriented, and ecosystem services paradigm. *Journal of Environmental Management* 216: 275-284
- Montoya-Coronado V. (2023) Development of a methodology for disconnecting urban water at the scale of a catchment area. PhD INSA Lyon

Némery J¹, Castebrunet H², Montoya-Coronado V.A², Thuong TQ⁴, Michel A², Lipeme-Kouyi G², Molle P³, Nguyen AT¹, Nguyen PD⁴, Bui XT⁴, Gratiot N¹, Descloitre M¹, Baduel C¹, Caracciolo R¹, Séchet P⁵

¹ IGE University Grenoble Alpes/CNRS/IRD/Grenoble-INP, France
² DEEP INSA Lyon, France
³ INRAe Lyon, France
⁴ Centre Asiatique de Recherche sur l'Eau/HCMUT, Ho Chi Minh City, Vietnam
⁵ LEGI University Grenoble Alpes/CNRS/Grenoble-INP, France

Two contrasted metropolitan areas



Ho Chi Minh City today



Lyon City today

Year	2016	2025	2040	2050
Population (M. inh.)	8,4	11	17,2	23
Number of WWTPs	2	4	12	12
Treatment capacity (10 ³ m ³ day ⁻¹)	171	1,253	2,813	2,813
% connected	10%	57%	82%	61%

Table 1 : Present and future urban water management in HCMC (Nguyen et al 2020)

Year	2020	2030
Population (M. inh.)	1,4	1,5-1,6
Number of WWTPs	12	12
Treatment capacity (10 ³ m ³ day ⁻¹)	1,005	1,005 + NBS
% connected	99%	Runoff disconnection

Table 2 : Present and future urban water management in Lyon (Source Grand Lyon and Insee for population in 2030)

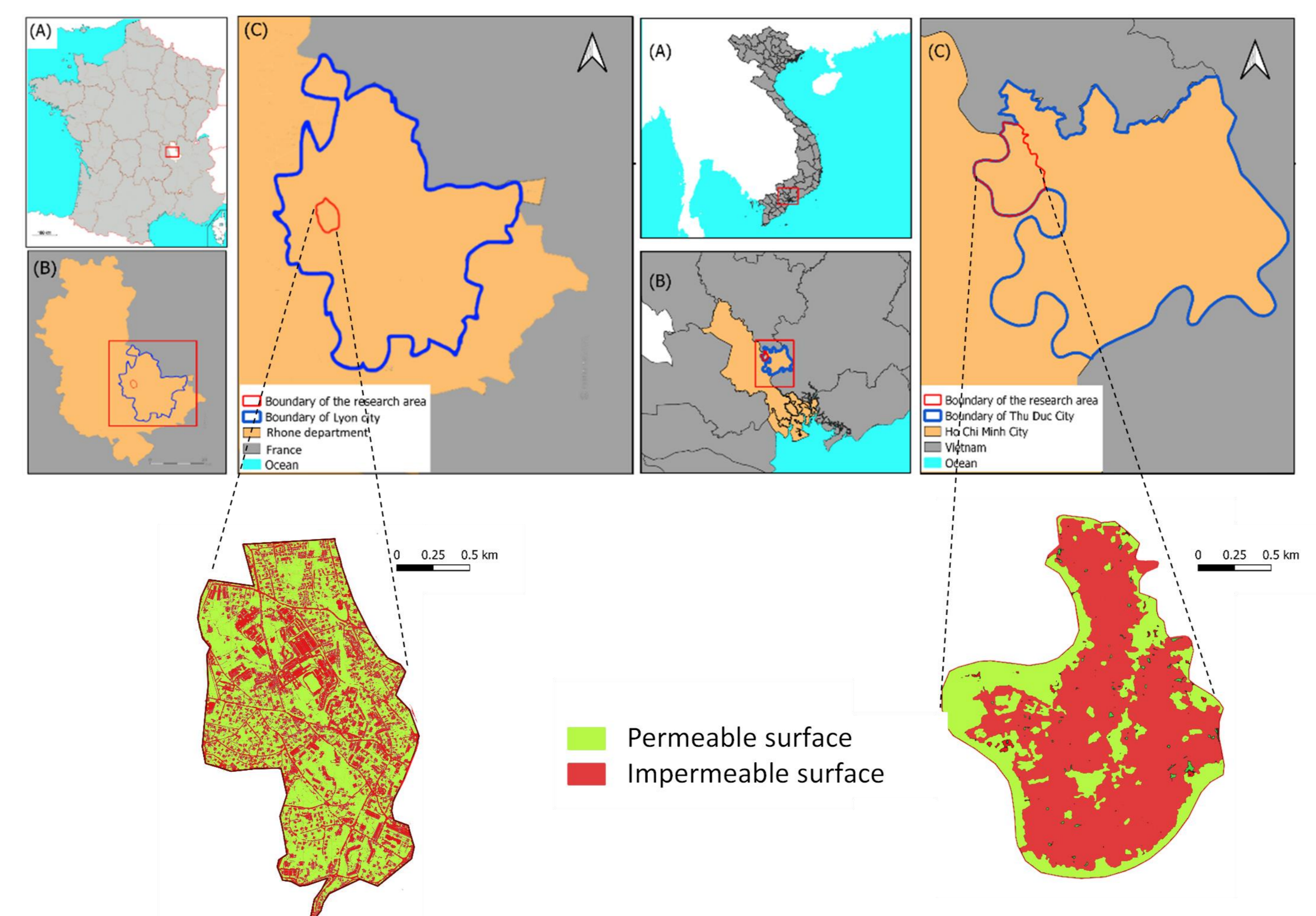


Figure 3 : Map of A) France, and Ecully basin in Lyon City (area, 245 ha, 18 000 inhabitants, impermeable area : 45 %, combined sewage system, one overflow, slope 0,02 m/m, pipe diameter 1m) and B) Vietnam and Thu Duc sub-basin in Ho Chi Minh City (area : 294 ha, 14 827 inhabitants, impermeable area : 69 %, combined sewage system, five overflows, slope 0,001 m/m, pipe diameter 0,8 m)

Results

Table 3 : Scenario of reduction of 10, 20 and 30 % of the impermeable surfaces using NBS.

Scenario	Ecully (245 ha) Annual precipitation : ~800 mm				Thu Duc (294 ha) Annual precipitation : ~1 800 mm			
	Baseline scenario	- 10%	- 20 %	- 30%	Baseline scenario	- 10%	- 20 %	- 30%
Impermeable surface (%)	45	40	36	33,5	69	62	55	48
Total Volume (10 ³ m ³)	1 289	1 258	1 233	1 218	338	314	291	268
Spill Volume (10 ³ m ³)	44	35	28	24	35	27	20	13
Frequency of spill (day)	26	25	22	20	38	35	26	18

Conclusion

- The effort to remove 30% of impervious surfaces seems promising and contributes to reduce up to 50% of combined sewer overflows
- On the basis of the assumptions considered, the level of effort is comparable in two contrasted cities.
- TONIC model seems to be a promising decision support tool for managers and stakeholders to test some scenarios of disconnection and NBS implementation.

