



HAL
open science

A global LC–MS 2 -based methodology to identify and quantify anionic phospholipids in plant samples

Manon Genva, Louise Fougère, Delphine Bahammou, Sébastien Mongrand,
Yohann Boutté, Laetitia Fouillen

► To cite this version:

Manon Genva, Louise Fougère, Delphine Bahammou, Sébastien Mongrand, Yohann Boutté, et al.. A global LC–MS 2 -based methodology to identify and quantify anionic phospholipids in plant samples. The Plant Journal, 2024, 117 (3), pp.956-971. 10.1111/tpj.16525 . hal-04377185v2

HAL Id: hal-04377185

<https://hal.science/hal-04377185v2>

Submitted on 7 Jan 2024

HAL is a multi-disciplinary open access archive for the deposit and dissemination of scientific research documents, whether they are published or not. The documents may come from teaching and research institutions in France or abroad, or from public or private research centers.

L'archive ouverte pluridisciplinaire **HAL**, est destinée au dépôt et à la diffusion de documents scientifiques de niveau recherche, publiés ou non, émanant des établissements d'enseignement et de recherche français ou étrangers, des laboratoires publics ou privés.

TECHNICAL ADVANCE

A global LC–MS²-based methodology to identify and quantify anionic phospholipids in plant samples

Manon Genva^{1,2}, Louise Fougère¹, Delphine Bahammou¹, Sébastien Mongrand¹, Yohann Boutté¹ and Laetitia Fouillen^{1,*} 

¹University of Bordeaux, CNRS, Laboratoire de Biogenèse Membranaire (LBM), UMR 5200, F-33140, Villenave d'Ornon, France, and

²Laboratory of Chemistry of Natural Molecules, Gembloux Agro-Bio Tech, University of Liège, Passage des Déportés 2, 5030 Gembloux, Belgium

Received 30 May 2023; revised 10 October 2023; accepted 21 October 2023.

*For correspondence (e-mail laetitia.fouillen@u-bordeaux.fr).

SUMMARY

Anionic phospholipids (PS, PA, PI, PIPs) are low-abundant phospholipids with impactful functions in cell signaling, membrane trafficking and cell differentiation processes. They can be quickly metabolized and can transiently accumulate at defined spots within the cell or an organ to respond to physiological or environmental stimuli. As even a small change in their composition profile will produce a significant effect on biological processes, it is crucial to develop a sensitive and optimized analytical method to accurately detect and quantify them. While thin-layer chromatography (TLC) separation coupled with gas chromatography (GC) detection methods already exist, they do not allow for precise, sensitive, and accurate quantification of all anionic phospholipid species. Here we developed a method based on high-performance liquid chromatography (HPLC) combined with two-dimensional mass spectrometry (MS²) by MRM mode to detect and quantify all molecular species and classes of anionic phospholipids in one shot. This method is based on a derivatization step by methylation that greatly enhances the ionization, the separation of each peak, the peak resolution as well as the limit of detection and quantification for each individual molecular species, and more particularly for PA and PS. Our method universally works in various plant samples. Remarkably, we identified that PS is enriched with very long chain fatty acids in the roots but not in aerial organs of *Arabidopsis thaliana*. Our work thus paves the way for new studies on how the composition of anionic lipids is finely tuned during plant development and environmental responses.

Keywords: anionic phospholipids, plant lipids, tandem mass spectrometry, methylation, phosphoinositides, technical advance.

INTRODUCTION

Lipids are not only essential building blocks of cellular membranes but they also play key regulatory functions in a high variety of biological processes (Cai et al., 2016; Dubois & Jaillais, 2021; Noack & Jaillais, 2020). Among these, the role of lipids in cellular processes is receiving more and more attention, especially in organisms like plants that should quickly adapt to environmental changes (Boutté & Jaillais, 2020; Noack & Jaillais, 2020; Wang et al., 2016). Plant lipids display a high structural diversity of molecules among which anionic phospholipids, despite being low abundant, are widely recognized for their role in most membrane-related processes including cell growth, cell division, signalling, membrane trafficking, cell polarity or stress response (Dubois &

Jaillais, 2021; Noack & Jaillais, 2017, 2020; Platre et al., 2019; Pokotylo et al., 2018). Lipids modulate the physicochemical properties of plant membranes, notably their charge, curvature, and the clustering of specific lipids and proteins into membrane domains (Noack & Jaillais, 2020). In addition, anionic phospholipids establish a membrane lipid identity to precisely target membrane processes by allowing the recruitment of specific proteins or effectors such as small GTPases of the ADP ribosylation factor (ARF), the Rab or the Rho families or their activators (the guanine nucleotide exchange factors GEF) or inactivators (the GTPase activating protein GAP) (Dubois & Jaillais, 2021; Naramoto et al., 2009; Noack & Jaillais, 2017, 2020; Platre et al., 2019). Additionally, anionic phospholipids are key molecules in cell signalling, which is

enabled by their fast biosynthesis, degradation or consumption to produce secondary messengers (Noack & Jaillais, 2020). Accumulation of anionic phospholipid species at specific sub-domains of membrane compartments is tightly regulated by enzymes that either produce or degrade them, including kinases, phosphatases, and phospholipases. Thus, the localization or the accumulation of a particular anionic phospholipid species can be only transient before it gets metabolized into another species. Anionic phospholipids (Figure 1) contain a negatively charged polar head and include phosphatidic acid (PA), which plays a central role in the biosynthesis of all phospholipid species in plants (Dubois & Jaillais, 2021; Dubots et al., 2012), as well as phosphatidylserine (PS), phosphatidylinositol (PI) and their phosphorylated forms called the phosphoinositides. The latter comprises plants mono- and bis-phosphorylated forms and are, respectively, named as monophosphate phosphoinositides (PIPs) and bisphosphate phosphoinositides (PIP₂) (Dubois & Jaillais, 2021). Of note, while phosphatidylinositol-3,4,5-triphosphate (PtdIns(3,4,5)P₃) is described in animal cells, it is apparently absent in plants (Heilmann & Heilmann, 2015; Molnár et al., 2016).

The study of anionic phospholipids in plants is complicated because of their low abundance which requires the development of highly sensitive analytical methods. Indeed, PI, PA, and PS, respectively, account for approximately 7%, 2%, and 1% of total phospholipids in *A. thaliana* leaves while the phosphoinositides account for less than 1% (Noack & Jaillais, 2020). Moreover, anionic phospholipids are

categorized into structurally distinct classes (i.e., PA, PS, PI, PIP, and PIP₂) which all include a wide variety in fatty acyl chains both in length and saturation degree, leading to high differences in the hydrophobicity of the molecules that need to be analyzed (Ogiso et al., 2008; Wang et al., 2016). A cost-efficient method was previously developed in which anionic phospholipids were separated by thin-layer chromatography (TLC) according to their characteristic head groups and, after separation, the associated fatty acids were analyzed using gas chromatography (GC) (Heilmann & Heilmann, 2013; König et al., 2007). However, this method does not have the ability to separate individual molecular species as only the different classes of anionic phospholipids can be separated according to their polar head. Besides, it is not known where PS migrates in this method.

Importantly, little variations in the profile of anionic phospholipid species can lead to significant modulation of biological processes (Wang et al., 2016). Hence, there is an urgent need for the development of highly sensitive analytical methods for the comprehensive analysis of individual molecular species of each class of anionic phospholipids, notably from plant tissues. Ideally, this analytical method should be able to detect all anionic phospholipid species in one shot. Mass spectrometry methods, by direct infusion or in combination with chromatography techniques, have emerged as reference methods for the analysis of phospholipids from plant samples (Cai et al., 2016; Lee et al., 2013; Wang et al., 2016; Wei et al., 2018). Among the different available chromatography methods, separation on reverse-

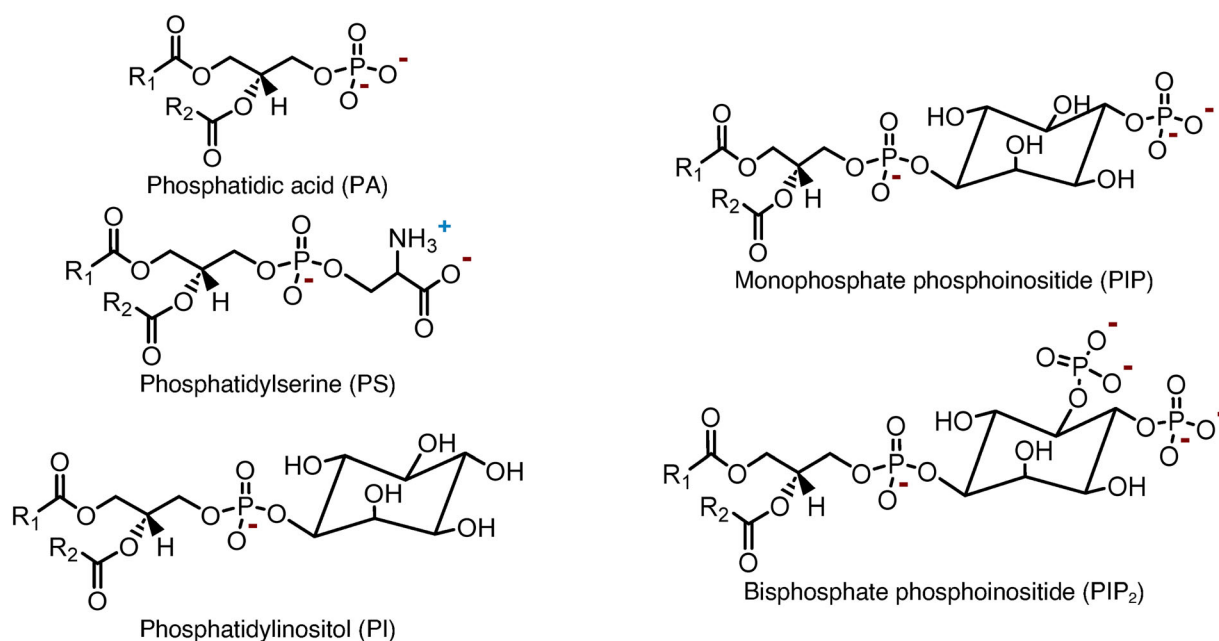


Figure 1. Structure of the anionic phospholipid classes. All anionic phospholipids are composed of a phosphate group attached to a glycerol backbone containing two esterified fatty acyl chains. Phosphatidic acid (PA) has the simplest structure. Phosphatidylserine (PS) and phosphatidylinositol (PI) refer to anionic phospholipids containing a serine or an inositol moiety linked to the phosphate group, respectively. PI that has one or two additional phosphate groups linked to the inositol are, respectively, named as monophosphate phosphoinositide (PIP) and bisphosphate phosphoinositide (PIP₂).

phase columns by (ultra)-high-performance liquid chromatography ((U)HPLC) is commonly performed. However, while the analysis of non-anionic phospholipids (PC, PE, ...) with high sensitivity requires little sample preparation and shows high sensitivity and selectivity (Grison et al., 2015; Huang et al., 2019), difficulties remain as for the anionic phospholipids. Indeed, these molecules show low stability during MS analysis, which results in low analysis sensitivity, peak resolution problems, and, therefore, makes their analysis complicated (Lee et al., 2013; Wei et al., 2018). More specifically, the greatest peak tailing problems are encountered during the analysis of PA which is therefore very tricky to quantify in plant samples at physiological concentrations. Additionally, while phosphoinositide molecules can be analyzed by mass spectrometry methods without any derivatization, this comes with problems of recovery, stability, and ion yields (Morioka et al., 2022). This makes their analysis very tricky when they are present at very low concentrations in plant samples. Different strategies have, therefore, been proposed to overcome these analytical problems, such as the addition of phosphoric acid to HPLC solvents, but these tips could not completely overcome peak resolution and sensitivity problems (Ogiso et al., 2008). More recently, different studies highlighted the high potential of anionic phospholipid derivatization and notably the methylation of hydroxyl groups, for their enhanced analysis by mass spectrometry (Cai et al., 2016; Canez et al., 2016; Wei et al., 2018; Zhang et al., 2019). By methylating the phosphate groups of anionic phospholipids, their negative charge would be neutralized (Wasslen et al., 2014; Wei et al., 2018), resulting in a significantly increased analysis sensitivity and peak resolution (Huang et al., 2019; Lee et al., 2013; Wasslen et al., 2014; Wei et al., 2018). Different methylation strategies have been proposed, among which the use of trimethylsilyldiazomethane (TMSD) has now emerged (Yin et al., 2022) and was already used to comprehensively analyze PIP molecular species in plant membrane fractions (Ito et al., 2021). However, no method has been developed and applied yet for the simultaneous analysis and quantification of all anionic phospholipid species following their methylation from plant samples.

In this study, we aimed at filling this gap by developing a biphasic extraction with chemical modification to a targeted HPLC–MS/MS method for the simultaneous profiling of all species of anionic phospholipids (PA, PS, PI, PIP, and PIP₂) from plant samples.

RESULTS AND DISCUSSION

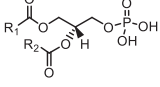
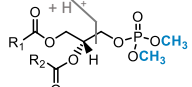
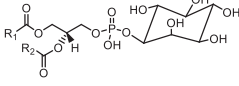
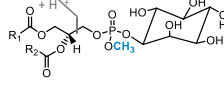
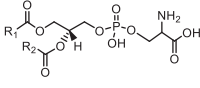
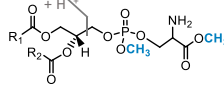
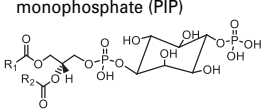
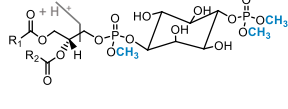
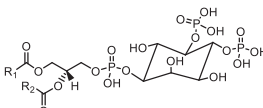
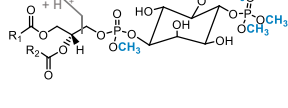
Optimization of HPLC and MS parameters for the profiling of methylated anionic phospholipids

Commercial mixtures of each investigated lipid class (PA, PS, PI, PIP, and PIP₂) were methylated and analyzed by direct infusion mass spectrometry for the confirmation of

target adducts and fragments, as well as for the optimization of MS parameters (Declustering Potential DP, Collision Energy CE and Collision cell exit potential CXP) for their enhanced detection and fragmentation. It was decided to work in the positive ionization mode and ammonium formate was added to the solvents as it was shown to improve molecule ionization. Results in Table 1 present the optimized MS ionization and fragmentation conditions. Besides, these results confirmed that the number of methyl groups added during the methylation reaction is specific to the polar head group and therefore to each anionic phospholipid class, as previously described (Lee et al., 2013). Indeed, while PIs were methylated once during the derivatization procedure, PAs and PSs were methylated twice; and PIPs and PIP₂s were methylated 3 and 5 times, respectively. Our results also highlighted that the ionization occurs differently for the investigated anionic phospholipid classes as the main adducts were not the same for all molecules; the main detected adducts for PA and PI species were ammonium adducts; while protonated PS, PIP, and PIP₂ dominated the mass spectrum. Contrariwise, the fragmentation pattern was similar for each molecule as the primary detected fragments corresponded to the loss of the polar head group for all anionic phospholipids, which was in agreement with previous studies (Lee et al., 2013; Pi et al., 2016; Wasslen et al., 2014).

We then optimized the chromatographic resolution of the method using mixes of standard molecules for each of the investigated anionic phospholipid classes. These standards were first submitted to the methylation reaction, and the most appropriate analytical conditions were selected following analysis. We notably investigated the use of different stationary phases and of different solvents, with or without the addition of ammonium formate that may enhance ionization of the molecules. We first studied the use of C4, C8, and C18 columns with gradients of solvents previously described in the literature for the analysis of phospholipids with these stationary phases (Buré et al., 2013; Ito et al., 2021; Platré et al., 2018). We selected the C18 column that allowed the best peak separation and the nicest peak resolution while methods with C8 and C4 columns resulted in poorer peak separation and resolution. We then tested different solvents and modified the gradients to further improve the chromatographic resolution of the method with this column. We also confirmed that the addition of ammonium formate in solvents effectively improves the sensitivity of the analysis. Finally, we optimized the elution gradient with the selected solvents. The use of a C18 column, with a gradient of methanol: water (3:2) and isopropanol: methanol (4:1) allowed the best separation of the target methylated anionic phospholipids. Moreover, the addition of ammonium formate in solvents increased the analysis sensitivity and was therefore retained. Results presented in Figure 2a illustrate the

Table 1 Optimized electrospray ionization—MS/MS analysis parameters for the analysis of methylated anionic phospholipids in the positive mode. For each anionic phospholipid class, the skeletal structure is presented before and after the methylation reaction; as well as the main precursor ion, the fragmentation pattern, and the optimized conditions for their analysis by mass spectrometry

Lipid class	Number of additional methyls	Precursor ion	Fragment ion	Declustering potential (V)	Collision Energy (V)	Collision cell exit potential (V)
Phosphatidic acid (PA) 	2	$[M + NH_4]^+$	$[M + H-126]^+$ 	10	26	19
Phosphatidylinositol (PI) 	1	$[M + NH_4]^+$	$[M + H-274]^+$ 	10	31	25
Phosphatidylserine (PS) 	2	$[M + H]^+$	$[M + H-213]^+$ 	10	34	24
Phosphatidylinositol monophosphate (PIP) 	3	$[M + H]^+$	$[M + H-382]^+$ 	10	32	24
Phosphatidylinositol bisphosphate (PIP ₂) 	5	$[M + H]^+$	$[M + H-490]^+$ 	10	45	32

chromatographic resolution of the method and notably the great peak shape for all investigated methylated anionic phospholipids. In comparison, poorer peak resolution, with mainly peak tailing and low sensitivity, was highlighted when non-methylated anionic phospholipids were analyzed using the same chromatographic parameters (Figure 2b). Notably, the peak asymmetry factor has been determined and shows that methylated PA, PI, and PS species all have a great peak symmetry, with mean values of 0.99 for each of these three species when analyzed following methylation (Figure 2c). In comparison, the peak asymmetry factor of these same PA, PI and PS species when analyzed without being methylated beforehand confirmed the bad peak symmetry for PA (1.70) and PS (1.56) species, while the peak shape was good for PIs (0.95). Furthermore, the peak asymmetry factor of methylated PIPs (1.02) and PIP₂s (1.16) also illustrates the greatest resolution of their peaks while these lipids could not be detected without the methylation step (Figure 2c).

As the ionization temperature is a determinant parameter when it comes to increase the sensitivity by mass

spectrometry (Gao et al., 2016), we investigated the effect of the ionization temperature on the analysis of methylated anionic phospholipids. Mixes of standard molecules were thus analyzed by HPLC–MS/MS with the developed method and the optimized mass parameters, but with increasing ionization temperatures ranging from 200 to 600°C. Results presented in Figure 3 showed that while methylated PAs and PIs requested lower temperatures for their ionization (respectively, 200 and 250°C), higher temperatures allowed the optimal ionization of methylated PIPs and PIP₂ (respectively, 350 and 400°C), and PS species requested the highest ionization temperature (500°C). Our results therefore point out that the optimal ionization temperature highly differs between the investigated methylated lipid classes. In this view, choosing the optimal ionization temperature for all anionic phospholipid classes in the context of developing a single one-shot analysis for all these species by mass spectrometry is not possible. It was therefore chosen to select an ionization temperature of 350°C that was the best compromise to enhance sensitivity for all species and that was, in addition, close to the optimal ionization

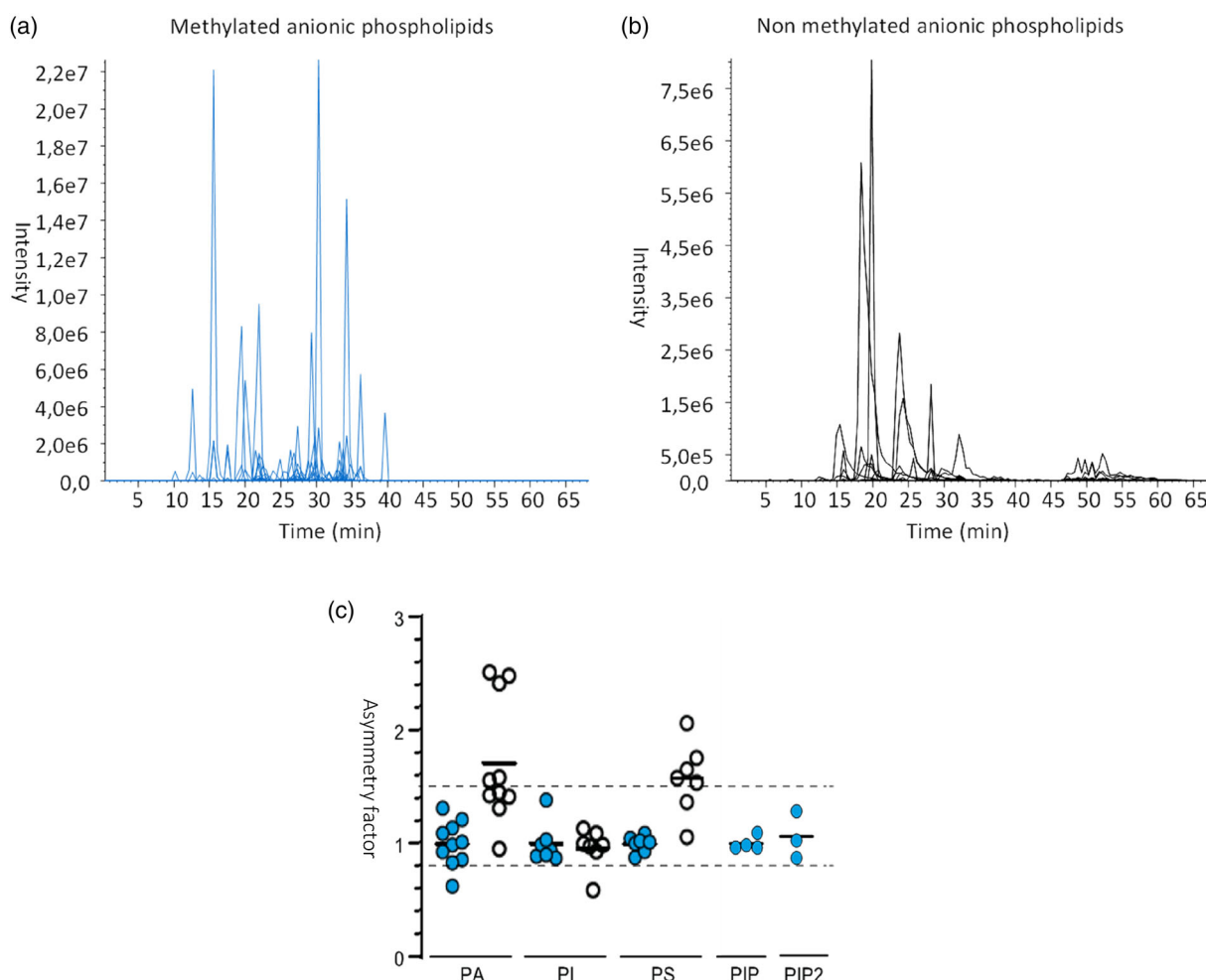


Figure 2. Presentation of the chromatographic resolution of the developed method. Samples containing mixtures of PA, PI, PS, PIP, and PIP₂ standards analyzed with the developed HPLC-MS/MS method following methylation (a) and without methylation (b). (c) For PA, PI, and PS species, comparison of the peak asymmetry factor when samples were analyzed following (blue circles) or without (white circles) methylation. For PIP and PIP₂, only the peak asymmetry factors are shown when samples were methylated, due to that no peaks were detected in the absence of methylation.

temperature of phosphoinositides species (PIP and PIP₂). From all anionic phospholipids, the latter are present in the lowest quantities in plant samples (Noack & Jailais, 2020) and therefore request the highest optimization of their analytical parameters so that they can be accurately detected and quantified.

Optimization of the methylation reaction conditions: evaluation of the impact of time and temperature

Different reaction conditions have been reported in the literature for the methylation of lipids using TMS-diazomethane, and notably the duration of the methylation and temperatures (Li et al., 2021). There was therefore a need in our method to optimize the reaction kinetics to select the best methylation conditions. In this context, we investigated the impact of the methylation time (ranging from 2 to 120 min) and of the reaction temperature (at 0, 23, and 40°C) on the methylation efficiency. The latter

was determined by considering the percentage of the main methylated species on all reported species in the mixture following methylation.

First, the study of reaction temperature showed an increase in methylation efficiency between 0°C and 23°C, but low differences between 23°C and 40°C (Figure 4a). In light of these results, a temperature of 23°C was selected. In addition, results highlighted low differences in methylation efficiency in function of reaction time at the chosen temperature (Figure 4b), suggesting that the methylation reaction is almost instantaneous. Still, a slight decrease in methylation efficiency was noticed at 120 min of reaction for PI, PIP, and PIP₂ molecules, which was due to the increase in forms that were over-methylated. It is likely that methylation begins to occur on the inositol head groups of PIs, PIPs, and PIP₂ as this was not highlighted with PA and PS species. With regard to these results, we decided to select a reaction time of 10 min at 23°C. Besides, results

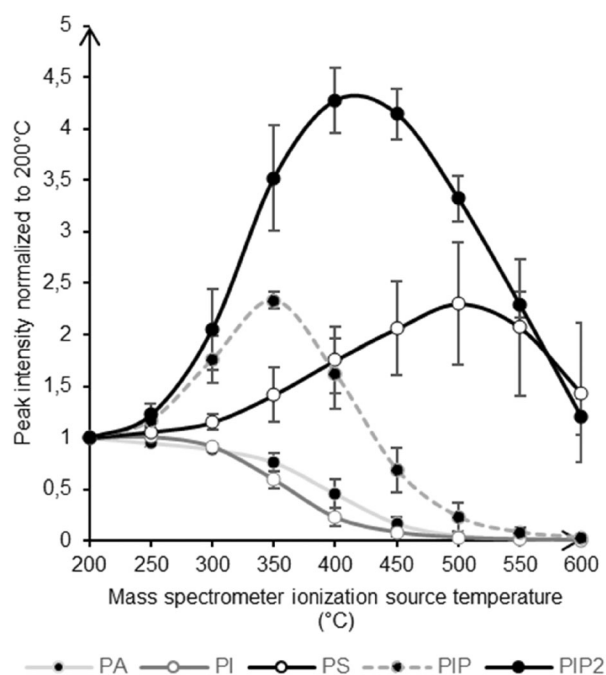


Figure 3. Optimization of the ionization temperature for the analysis of anionic phospholipids. Evaluation of the impact of the ionization temperature (200–600°C) on mass spectrometry signal intensity for PA, PI, PS, PIP, and PIP₂ lipids. The signal was normalized to that recorded at an ionization temperature of 200°C ($n = 3$).

also highlighted that, following methylation, the percentage of the main methylated form highly depends on the anionic phospholipid class that is methylated (Figure 4c). Indeed, while high differences were observed between the different investigated lipid classes, low differences were highlighted for lipids of the same class with different fatty acyl chains (Table S1).

Analytical performance of the method

In order to confirm the high added value of the developed method and to evaluate its analytical performance, pure standards of anionic phospholipids were selected and analyzed at different concentrations with or without the methylation step. For these methylated and non-methylated species, the limit of detection (LOD) and limit of quantification (LOQ) were determined, as well as the linearity of the response and the peak width at 50% height.

Results presented in Table 2 firstly demonstrate the high sensitivity of the developed method for all anionic phospholipid species investigated with LOD ranging from 0.27 to 11.82 fmol and LOQ ranging from 0.54 to 23.63 fmol, depending on the investigated lipids. The lowest LOD and LOQ values were obtained for the analysis of PA and the highest for PI(4,5)P₂. With regard to the literature (Lee et al., 2013; Wei et al., 2018), these results show the improved sensitivity of our method as LODs of 7.5, 20, and 200 fmol were previously obtained for the analysis of PA,

PS, and PI using supercritical fluid chromatography coupled to a MS/MS analysis (Lee et al., 2013). Our method also demonstrates a highly increased sensitivity for the analysis of PA as compared to what has been previously reported by direct infusion MS (Wei et al., 2018). Moreover, our results confirmed that methylation of anionic phospholipids highly increases the sensitivity (Table 2 and Figures 5; Figures S1 and S2). The LOQ of PA was 128 times lower when the molecule was methylated in comparison with the non-methylated compound. For PS and PI species, the methylation allowed to decrease the LOQ by 4 and 32 times, respectively. PI4P and PI(4,5)P₂ could not be detected without being methylated before analysis. PA and PS peak shape was also greatly improved by phospholipid methylation as the peak width at 50% height was decreased by more than 60% in comparison to not methylated samples. Additionally, the linear range was very wide for all anionic phospholipid species, with coefficients of determination (R^2) higher than 0.99 for lipids that were methylated before analysis, and low coefficients of variation (Relative Standard Deviations RSDs). It should be noted that the retention time of the different classes of anionic phospholipids is not affected in the same way following methylation. Notably, methylated PAs and PSs are eluted before their non-methylated corresponding forms; while it is the opposite for PI species. However, there are already many differences in the chromatographic characteristics of PA/PS and PI when these lipids are analyzed unmethylated. Indeed, while methylation greatly improved the sensitivity of their analysis, non-methylated PI species can still be analyzed without being methylated with a correct peak resolution. On the other hand, the analysis of PS and PA lipids is very tricky and results in a poor peak resolution with notably peak tailing problems, which are resolved by methylation before analysis. The differences observed between PA/PS and PI species may therefore originate from the intrinsic structural differences between these classes of lipids and also from the peak tailing problems with the analysis of non-methylated PAs and PSs.

Application of the method to plant samples

To validate our method, we performed the extraction and the quantification of anionic phospholipids on seven different biological materials from three different plant species that were either monocots or dicots. For the dicot plants, we chose *Arabidopsis thaliana* in which we sampled 4 weeks old leaves, 7 days old seedlings either taken as a whole or split into aerial organs (cotyledons and primary leaves) from one side and root organs on the other side, as well as Landsberg *erecta* suspension cells 10 days old after sub-culturing. We also sampled 4 weeks old leaves of the dicot *Nicotiana benthamiana*. For the monocot plants, we chose to sample 1-week-old leaves from *Zea mays*. Approximately 30 mg of fresh-weight plants were used for each analysis.

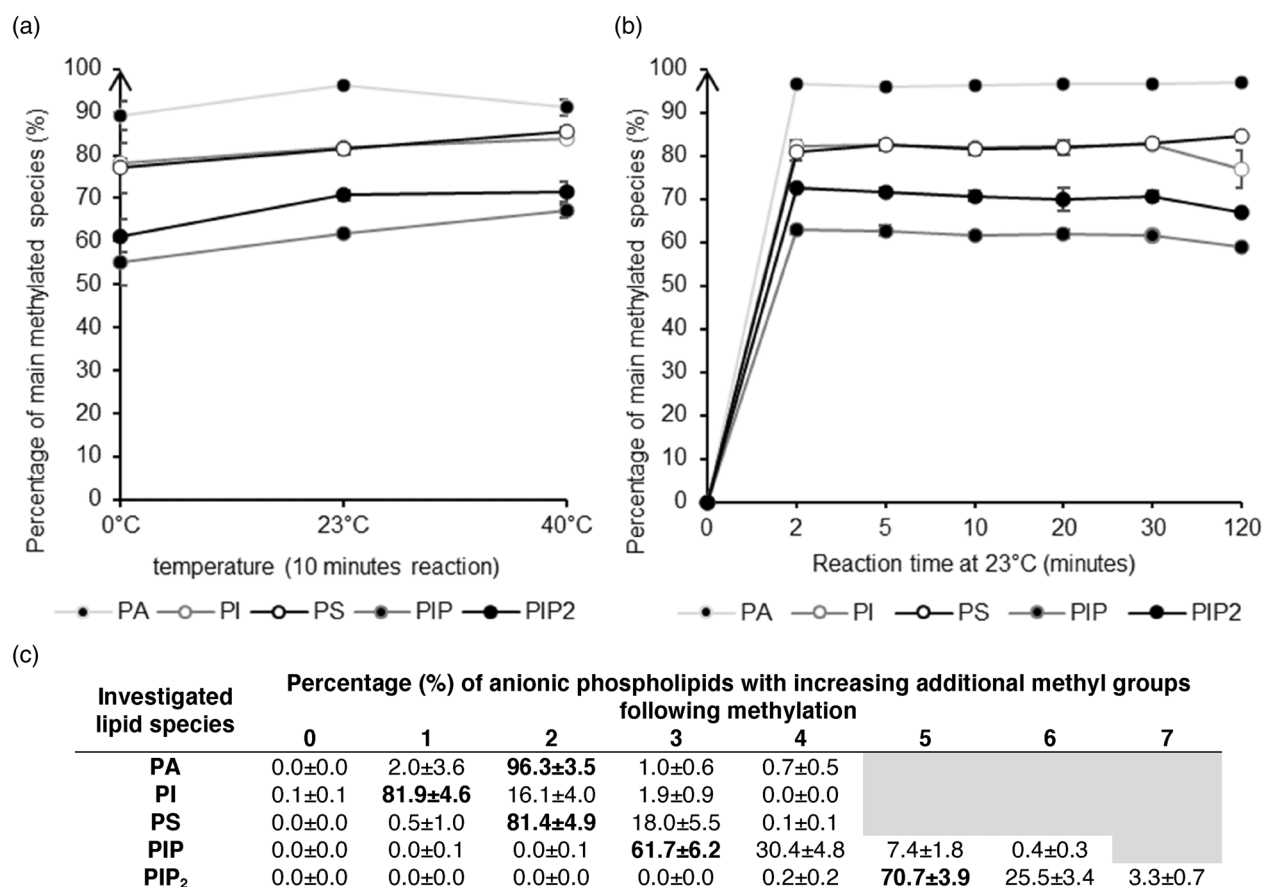


Figure 4. Optimization of the methylation reaction conditions. Impact of the methylation temperature at a constant reaction time of 10 min (a) and of the reaction time at a constant temperature of 23°C (b) on the percentage of the main methylated species for each analyzed class of anionic phospholipids ($n = 3$). Monomethylated species were considered for PI; bismethylated species were considered for PA and PS. For the analysis of PIP and PIP₂, species methylated 3 and 5 times were, respectively, considered. For a reaction time of 10 min at 23°C, the percentage of the investigated anionic lipid species methylated at various times is presented (c; $n = 3$). See Table S1 for complete data.

Interestingly, results presented in Figure 6, Figures S3–S5, first illustrate the low variability of the results regarding the analysis of different biological replicates. Indeed, when looking at the main species of each anionic phospholipid class analyzed from mature leaves of *Arabidopsis thaliana*, we observed a very low mean RSDs of 3.92, 4.33, 4.14, and 7.17% for PA (34:2, 34:3, 36:4, and 36:5), PI (34:2 and 34:3), PIP (34:2, 34:3) and PIP₂ (34:2, 34:3) species, respectively. Slightly higher RSD were observed for the analysis of PS species (36:4, 36:5) with a mean value of 18.60%.

When comparing the anionic lipids extracted from mature leaves of *A. thaliana*, *N. benthamiana*, and *Z. mays* (Figure 7), we observed a very similar PA composition with PA 34:2 and 34:3 being the primary major molecular species and PA 36:4 and 36:5 secondary major species. Similarly, PI has PI 34:2 and 34:3 as primary major species, but does not have secondary major species as for PA (Figure 7). These results are similar to what was published previously for the fatty acid content of PA and PI in *A. thaliana* (Devaiah et al., 2006). Our results further show that the

phosphoinositide family consisted of monophosphate phosphoinositides PIP 34:2 and 34:3 in all 3 leaf samples, with the notable presence of PIP 32:0 and 34:4 in *Z. mays* leaves, and bis-phosphate phosphoinositides PIP₂ 34:2 and 34:3 in all samples (Figure 7). These results are similar to what was previously published for the phosphoinositide pool extracted from the *Arabidopsis* rosette leaves and analyzed by TLC coupled to GC (Devaiah et al., 2006; König et al., 2007). The PIP and PIP₂ molecular species are the same as the ones detected in the pool of PI, which indicates that PIP and PIP₂ are derived from PI and are not further edited, except for the PIP of the monocot *Z. mays* where some acyl-chain editing could occur according to the profiles obtained in this study. In contrast to PA, PI, and phosphoinositides, the PS molecular species are much more diverse in the mature leaves of *A. thaliana*, *N. benthamiana*, and *Z. mays* (Figure 7). In the *A. thaliana* mature leaves, the major species were PS 36:4 and 36:5 while several additional species were also detected in *N. benthamiana* such as PS 38:3, 36:3, and 34:3. Interestingly

Table 2 Analytical performance of the method. For each anionic phospholipid species analyzed during analytical method validation, the retention time, limits of detection (LOD) and of quantification (LOQ), linearity domain, coefficient of determination (R^2), and peak width at 50% height are presented. Those data were presented for lipids that were methylated before analysis, as well as for species that were not methylated before analysis. The LOD and LOQ corresponded to the lowest concentration giving a signal/noise (S/N) higher than 3 and 10, respectively. “/” means no detectable signal. Calibration curves are presented in Figures S1 and S2

Lipid species	Methylated or not	Retention time (min)	LOD (pg / fmol)	LOQ (pg / fmol)	LOQ fold decrease by methylation	Linearity domain (pg)	R^2	Mean % RSD of calibration curve	Width at 50% height
PA 18:0/18:1	Methylated	38.6	0.19 / 0.27	0.38 / 0.54	128	0.38–1562	0.9956	2.30	0.34
	Unmethylated	54.0	12.21 / 17.37	48.83 / 69.46		48.83–12 500	0.9974	8.22	2.73
PS 16:0/18:1	Methylated	24.4	3.05 / 4.00	12.21 / 16.02	4	12.21–3125	0.9958	2.46	0.53
	Unmethylated	26.4	24.41 / 32.03	48.83 / 64.08		48.83–3125	0.9895	6.26	1.40
PS 18:0/18:2	Methylated	27.0	3.05 / 3.87	12.21 / 15.49	4	12.21–3125	0.9979	2.45	0.48
	Unmethylated	28.9	24.41 / 30.97	48.83 / 61.96		48.83–3125	0.9888	6.49	1.25
PI 16:0/18:1	Methylated	26.1	3.05 / 3.64	6.10 / 7.29	32	6.10–3125	0.9913	5.25	0.51
	Unmethylated	23.7	97.66 / 116.67	195.31 / 233.32		195.31–12 500	0.9882	11.54	0.61
PI 17:0/14:1	Methylated	15.4	3.05 / 3.84	6.10 / 7.67	32	6.10–3125	0.9973	5.19	0.40
	Unmethylated	13.6	97.66 / 122.84	195.31 / 245.67		195.31–12 500	0.9970	10.64	0.46
PI4P 17:0/20:4	Methylated	25.0	3.05 / 3.20	6.10 / 6.40	/	6.10–3125	0.9906	4.52	0.72
	Unmethylated	/	/	/	/	/	/	/	/
PI(4,5)P ₂ 17:0/20:4	Methylated	24.7	12.21 / 11.82	24.41 / 23.63	/	24.41–3125	0.9878	3.75	0.49
	Unmethylated	/	/	/	/	/	/	/	/

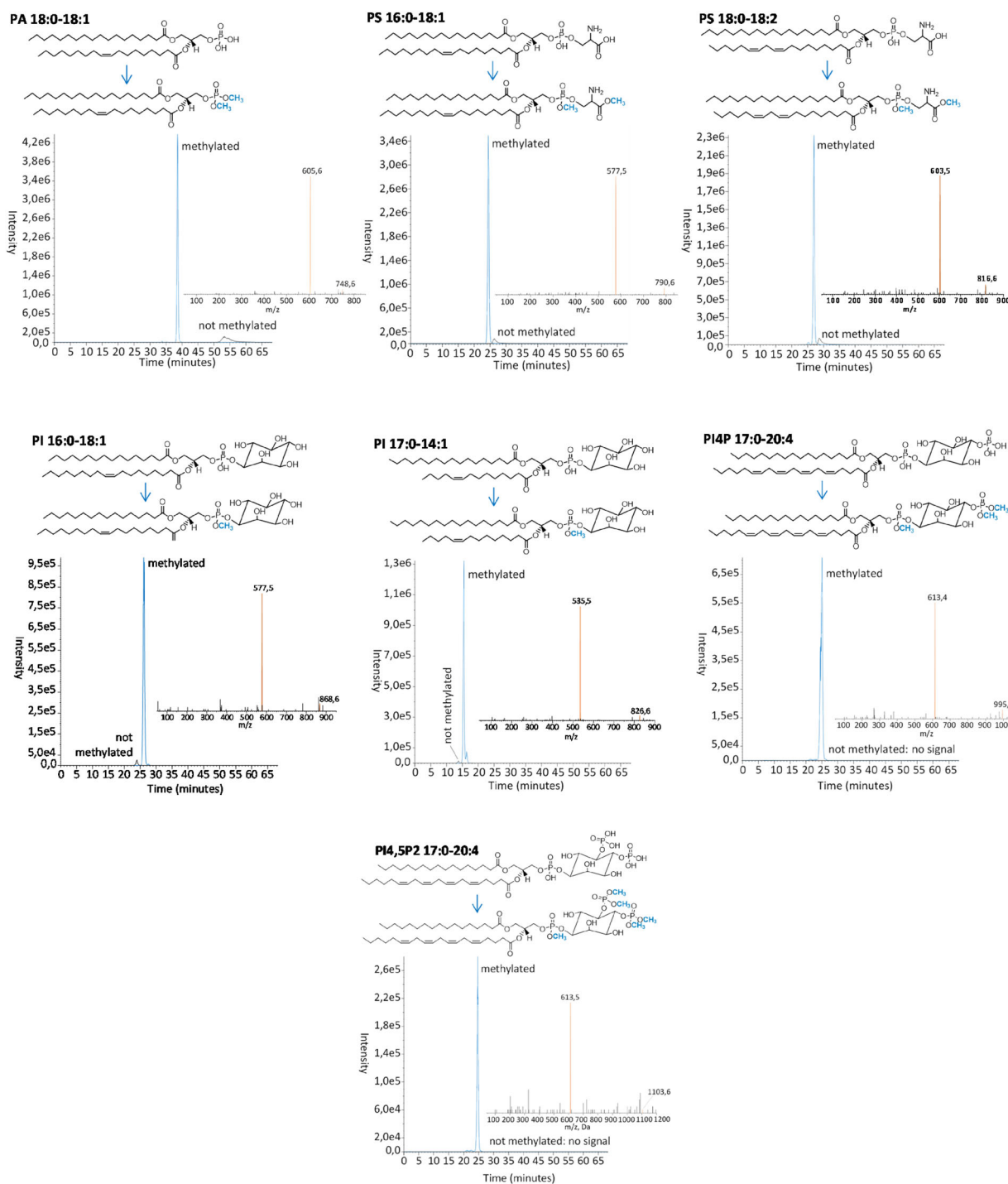


Figure 5. Presentation of the main species following methylation of each anionic phospholipid analyzed during analytical method validation. Chromatograms show comparisons of the HPLC-MS signal before and after derivatization. The peak in blue corresponds to the signal of the main species analyzed following sample methylation while the signal in black corresponds to the unmethylated species of unmethylated samples at the same concentration. Of note, signals were below the limit of detection for unmethylated PI4P and PI(4,5)P₂ lipids. Mass spectra show fragments of the target adducts for each molecule. The main fragment targeted for MS/MS analysis was highlighted in orange.

and in contrast to the dicots species, the monocot *Z. mays* clearly displays very long chain fatty acids (VLCFA) in the PS pool up to PS 42:2 and 42:3.

However, the molecular species of anionic phospholipids found in mature leaves might not be representative of the whole plant, and might, in other words, differ from

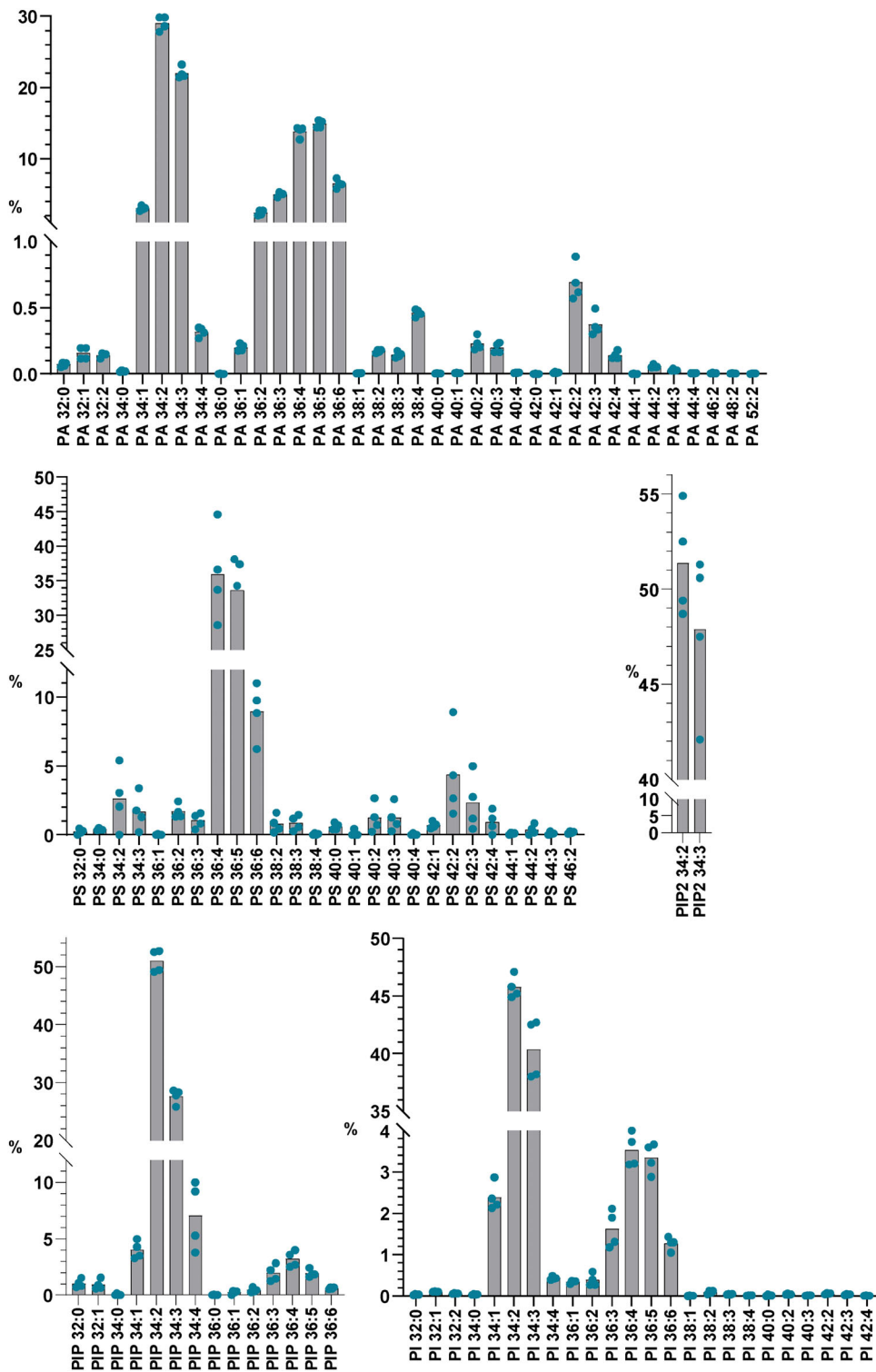


Figure 6. Composition of anionic phospholipids in *Arabidopsis thaliana* leaves. Data are expressed in % of total detected species. $n = 4$ biological replicates, the dots show the dispersion of data. See Figures S3 and S4 for data relative to other plant species and organs.

one organ to another. We therefore analyzed the composition of the anionic lipids found in different organs of *A. thaliana*. For that purpose, we chose to analyze the

composition of the anionic lipids in either the aerial part (cotyledons and primary leaves) or the roots of 7-day old dissected seedlings. As a reference, we also analyzed

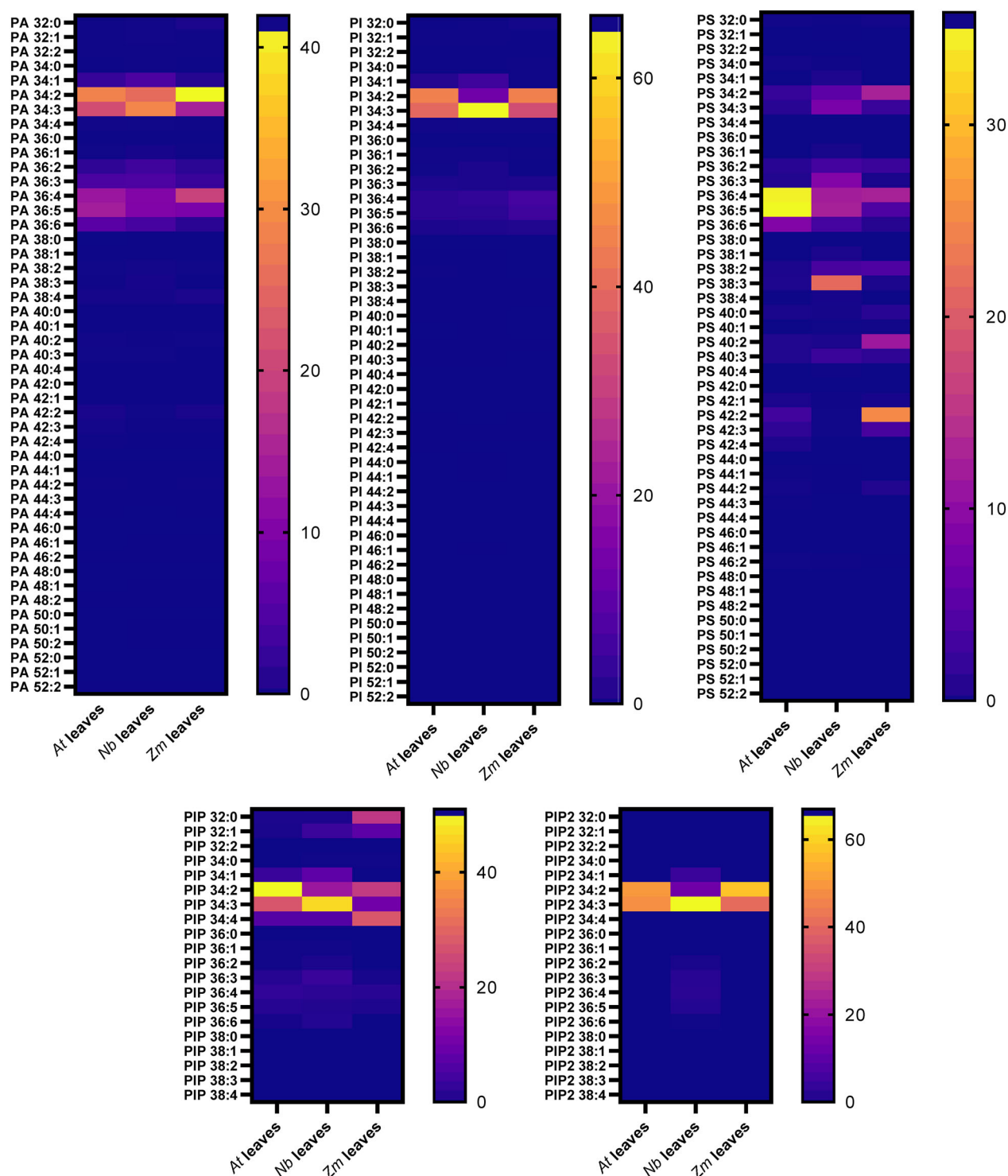


Figure 7. Heatmap presenting the proportions in anionic phospholipids analyzed with the developed method in leaves from different plant species. *At*: *Arabidopsis thaliana*; *Nb*: *Nicotiana benthamiana*; *Zm*: *Zea mays*. Data are expressed in % and are means from 4 to 5 measurements.

7 days old whole seedlings that were not dissected and, for the comparison, we put the results previously obtained in Figure 7 (mature leaves). We additionally analyzed the content of undifferentiated *Arabidopsis* suspension cell

culture as this would be a great comparison between cells embedded within a differentiated organ and cells immortalized that grow in a liquid media. However, it should be noted that the analysis of the different plant organs was

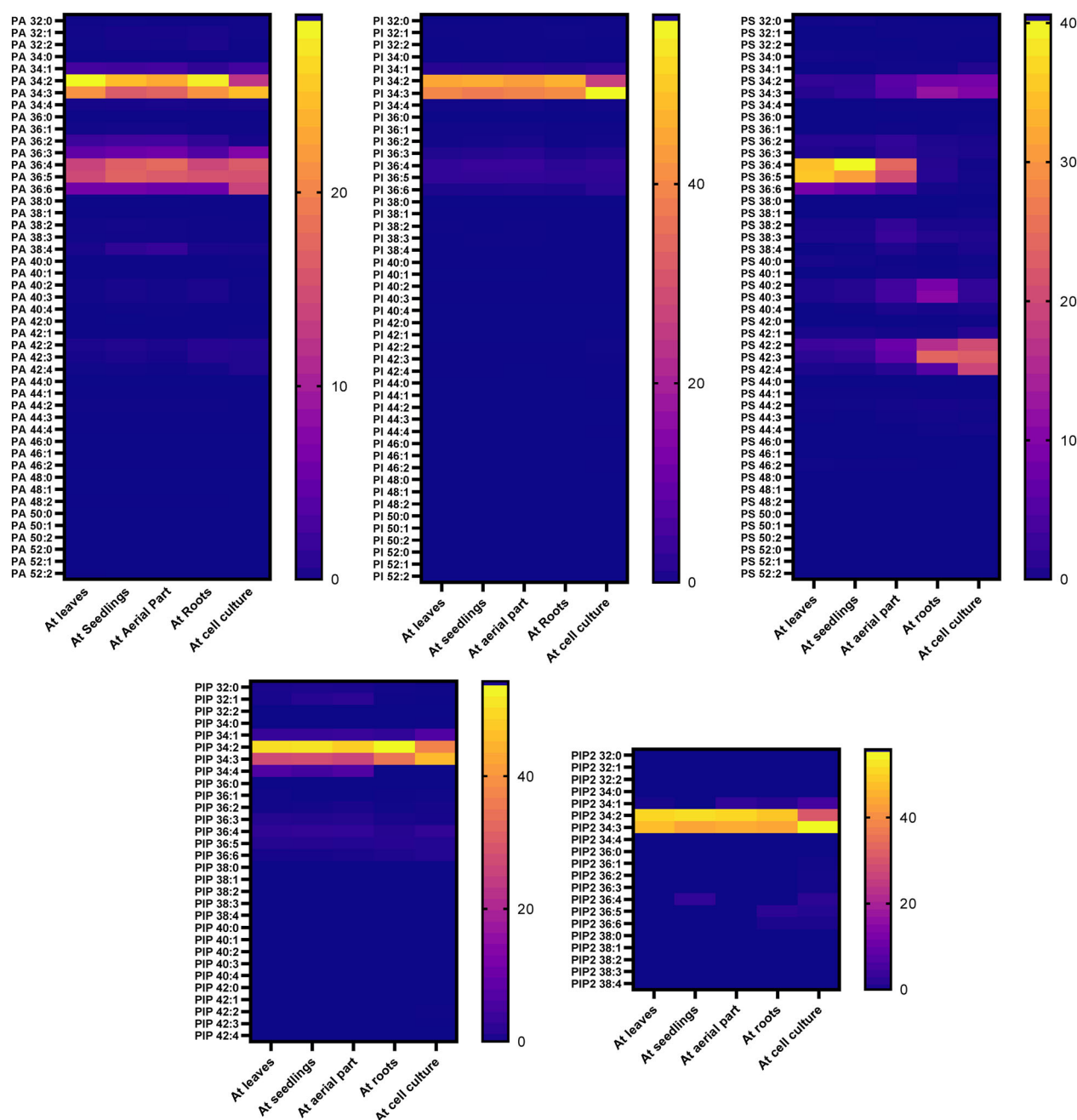


Figure 8. Heatmap presenting the proportions in anionic phospholipids analyzed with the developed method in different organs of *Arabidopsis thaliana*. At: *Arabidopsis thaliana*. Aerial part corresponds to cotyledons and primary leaves. Data are expressed in % and are means from 4 to 5 measurements.

made in the Columbia-0 (Col-0) ecotype while the cell culture is coming from the Landsberg *erecta* (*Ler*) ecotype. Thus, the differences observed might also be due to the ecotype background. Interestingly, our results show that PA, PI, PIP, and PIP₂ composition was basically similar to what we observed in *A. thaliana* leaves in Figure 7 (Figure 8). However, the PS content strikingly differs among the different *A. thaliana* organs (Figure 8). Indeed, the roots were particularly enriched in VLCFA-containing PS

(42:2, 42:3, and to a lesser extent 40:2 and 40:3) as compared to the aerial organs. In whole seedlings, VLCFA-containing PS was not easily visible. This is probably due to the dilution of membranes coming from the roots in the total pool of membranes coming from the aerial organs, as the latter is much more abundant than in the roots. It is interesting to note that the cell culture also displays a VLCFA-containing PS profile, similar to the root samples. Our results are consistent with other previously published

studies on roots or whole seedlings (Devaiah et al., 2006; Platre et al., 2018).

General discussion

The poor chromatographic resolution of anionic phospholipids, as well as their low abundance in biological matrices and weak stability during MS analysis, are the main factors making the analysis of these lipids complicated (Noack & Jaillais, 2020). Furthermore, their distribution into structurally different classes (i.e., PA, PS, PI, PIP, and PIP₂) with a high diversity in fatty acyl chain length and saturation degree inside each class makes the analysis even more complex. Previous studies already pointed out the high potential of lipid methylation, notably using TMS-diazomethane, as a derivatization procedure that increases the molecule stability during its ionization and fragmentation (Clark et al., 2011; Lee et al., 2013; Wasslen et al., 2014), therefore, increasing the sensitivity of their analysis by mass spectrometry. However, to the best of our knowledge, the present method is the first developed analytical method for the profiling and accurate quantification of all anionic phospholipids classes from plant tissues in one shot.

In our approach, we indeed propose an effective strategy for the methylation of all anionic phospholipid species from plant samples using TMS-diazomethane, as well as a highly sensitive method for their analysis by HPLC–MS/MS. This was achieved by optimizing the methylation reaction conditions, HPLC analytical separation, and MS ionization and fragmentation parameters. Our results showed a great improvement in analysis sensitivity and resolution, with an improved peak shape, in comparison with the analysis of the same lipids without any methylation step during the sample preparation procedure. In particular, methylation largely enhanced the sensitivity of the analysis of PA and PS species, which presented very large peaks when being analyzed without methylation. Large peaks can hardly be quantified due to their bad peak shapes and therefore be a source of high variation in the obtained signal. Our method now solves this issue and allows the detection of PA and PS with a high accuracy. Given the low abundance of anionic phospholipids, this parameter is crucial in the confidence we grant to the results. The increase in the accuracy or the confidence threshold with our method is even more important for the phosphoinositides PIP and PIP₂ as their abundance is even lower than PA or PS (Noack & Jaillais, 2020). We also confirmed the applicability of our method to the analysis of plant biological samples with a low variability for all analyzed anionic phospholipid classes and for all plant matrices investigated, including leaves of three different plant species (*A. thaliana*, *N. benthamiana*, and *Z. mays*) and different *A. thaliana* organs.

The anionic phospholipids require a very precise, sensitive and accurate method of quantification as they are highly effective at very low quantities in membranes and accumulate at defined spots of the endomembrane system in a transient manner where they are quickly metabolized in other lipid forms. Here we provide a HPLC–MS/MS method that not only confirmed previous published results on the composition of individual classes of anionic phospholipids, but also substantially improved their detection and quantification altogether in one shot. Additionally, our results provide new evidence toward the differential fatty acid composition of PS in roots versus aerial organs. The presence of VLFCA in PS seems quite specific to the plant kingdom as already described in several publications using TLC–GC (Yamaoka et al., 2011, 2021) or LC–MS/MS without derivatization of lipids (Devaiah et al., 2006; Maneta-Peyret et al., 2014). Of note, animal PS mostly contains 18:0–20:4 fatty acids (Lorent et al., 2020). The results on our plant samples suggest that PS is regulated during its synthesis or is subjected to acyl-chain editing after its synthesis to fulfill different functions according to the physiological need of a given organ. Indeed, it has been shown previously that the subcellular localization of PS at either the plasma membrane or endosomes varies during root cell differentiation and that this gradient of localization tunes auxin signalling through the nano-clustering of the small GTPase ROP6 (Platre et al., 2019). Therefore, measuring the level of anionic lipids, including PS, and their fatty acid content with a high level of precision and accuracy during cell differentiation or in different membrane compartments of the cell is important and may be a leverage to understand the regulation of signalling during development. Lastly, the development of our method opens the way to the implementation of analytical strategies for the quantification of other lipids classes in plant samples, and notably for the analysis of lyso forms of anionic phospholipids, which are phospholipids containing one single fatty acyl chain. As these lipids are known to accumulate under a wide range of biological conditions, and notably in response to biotic and abiotic stresses (Hou et al., 2016; Okazaki & Saito, 2014), the improvement of analytical methods for their more accurate and sensitive quantification would assuredly contribute to a better understanding of their roles in plant cell processes.

EXPERIMENTAL PROCEDURES

Chemicals and reagents

HPLC-grade methanol, chloroform, isopropanol, and formic were purchased from Sigma-Aldrich. TMS-diazomethane (2 M in hexane) was purchased from Fischer. The following lipids used for the experiments were all purchased from Avanti Polar Lipids: egg PA, soybean PS, brain PI4P, brain PI(4,5)P₂, and soybean PI. The following synthetic standard molecules were also bought from Avanti Polar Lipids: PA 18:0/18:1 and 15:0/18:1, PI 17:0/14:1 and

16:0/18:1, PS 18:0/18:2, 16:0/18:1 and 17:0/17:0, PI4P 17:0/20:4 and PI(4,5)P₂ 17:0/20:4. All lipids were stored at -20°C before sample preparation. The internal standards were added in the samples at a final concentration of 0.1 $\mu\text{g}/\text{ml}$.

Lipid extraction and derivatization procedure

725 μl of a MeOH:CHCl₃:1 M HCl (2:1:0.1; by volume) solution and 150 μl water were added to the samples in Eppendorf tubes which were then grinded three times for 30 sec using a TissueLyser II (Qiagen®, Courtaboeuf, France) after addition of metal beads. Following the addition of the internal standard when appropriate and of 750 μl CHCl₃ and 170 μl HCl 2 M, the samples were vortexed and centrifuged (1500 $\text{g}/5$ min). The lower phase was washed with 708 μl of the upper phase of a mix of MeOH:CHCl₃:0.01 M HCl (1:2:0.75; by volume). Samples were vortexed and centrifuged (1500 $\text{g}/3$ min) and the washing was repeated once. Then, samples were kept overnight at -20°C .

The organic phase was transferred to a new Eppendorf tube and the methylation reaction was carried out with 50 μl of TMS-diazomethane (2 M in hexane). After 10 min of reaction at 23°C , the reaction was stopped by adding 6 μl of glacial acetic acid. 700 μl of the upper phase of a mix of MeOH:CHCl₃:H₂O (1:2:0.75; by volume) was added to each sample which was then vortexed and centrifuged (1500 $\text{g}/3$ min). The upper phase was removed and the washing step was repeated once. Finally, the lower organic phases were transferred to a new Eppendorf tube. Following the addition of 100 μl MeOH:H₂O (9:1; by volume), the samples were concentrated under a gentle flow of air until only a drop remained. 80 μl of methanol were then added to the samples, which were submitted to ultrasounds for 1 min, before adding 20 μl water, and were submitted to 1 more min of sonication. The samples were finally transferred to HPLC vials for analysis.

HPLC-MS/MS analysis

Analysis of methylated and unmethylated anionic phospholipids was performed using a high-performance liquid chromatography system (1290 Infinity II, Agilent, Santa Clara, CA, USA) coupled to a QTRAP 6500 mass spectrometer (Sciex, Framingham, MS, USA). The chromatographic separation of anionic phospholipids was performed on a reverse-phase C18 column (SUPELCOSIL™ ABZ PLUS; 10 cm x 2.1 mm, 3 μm , Merck, Darmstadt, Germany) using methanol: water (3:2) as solvent A and isopropanol: methanol (4:1) as solvent B at a flow rate of 0.2 ml/min. All solvents were supplemented with 0.1% formic acid and 10 mM ammonium formate. Ten microliters of samples was injected and the percentage of solvent B during the gradient elution was the following: 0–20 min, 45%; 40 min, 60%; 50 min, 80%; 52 min, 100%; 61 min, 100%; 61.1–68 min, 45%. The column temperature was kept at 40°C . Nitrogen was used for the curtain gas (set to 35), gas 1 (set to 40), and gas 2 (set to 40). Needle voltage was at +5500 V with needle heating at 350°C ; the declustering potential (DP) was +10 V. The collision gas was also nitrogen; collision energy (CE) was set between 26 and 45 eV according to the lipid classes (Table 1). The dwell time was set to 5 ms. Mass spectrometry analysis was performed in the positive ionization mode.

Method development

The optimization of mass spectrometer parameters for the analysis of anionic phospholipids, and more specifically of the DP, CE, and collision cell exit potential (CXP), was performed by direct infusion mass spectrometry using methylated mixes of standards (egg PA, soy PS, brain PI4P, brain PI(4,5)P₂, soy PI). For each sample, 0.1 mg of lipid was methylated as described above and resuspended in 1 mL of methanol:H₂O 8:2 containing 0.2% of formic

acid and 6.5 mM ammonium formate for ionization, before being directly infused at a flow rate of 5 $\mu\text{l}/\text{min}$ in to the QTRAP 6500 mass spectrometer (Sciex).

The optimization of the chromatographic analysis of anionic phospholipid was performed using a mixture containing 0.01 mg of each mix of a standard molecule (egg PA, soybean PS, brain PI4P, brain PI(4,5)P₂, soybean PI). The mixture was methylated as described above and injected by HPLC-MS/MS using different HPLC columns, solvents, and solvent gradients. The chromatographic conditions allowing the most optimal chromatographic resolution for targeted anionic phospholipids were selected, as well as the optimized mass spectrometer analysis parameters. Investigated anionic phospholipid species were the following: PA (32:0, 32:1, 32:2, 34:0, 34:1, 34:2, 36:1, 36:2, 38:4, 38:5, 38:6, 40:6), PI (34:1, 34:2, 34:3, 36:1, 36:2, 36:3, 36:4, 36:5), PS (34:1, 34:2, 34:3, 36:1, 36:2, 36:3, 36:4, 36:5, 36:6), PIP (32:0, 34:0, 34:1, 36:1, 36:2, 36:3, 36:4, 38:2, 38:3, 38:4, 38:5, 40:4) and PIP₂ (32:0, 34:0, 34:1, 36:1, 36:2, 36:3, 36:4, 38:3, 38:4, 38:5, 40:4, 40:5). See Table S2 for the list of MRM information (Q1 and Q3 mass, DP, CE, and CXP).

The optimization of ionization temperature for the analysis of anionic phospholipids was performed using the same mixture containing 0.01 mg of each mix of standard molecule methylated as described above. These were analyzed with the selected optimal chromatographic conditions but with increasing ionization temperatures (200–250–300–350–400–450–500–550–600 $^{\circ}\text{C}$). All analyses were repeated three times. The most optimal ionization temperature was determined for each anionic phospholipid class. See Table S2 for the list of MRM information (Q1 and Q3 mass, DP, CE, and CXP).

The impact of time and temperature on the methylation reaction has been studied by performing the methylation reaction on the same mixture of standards as detailed before, but by investigating different methylation temperatures (0–23 and 40°C) and reaction duration (0–2–5–10–20–30–120 min). All analyses were repeated three times. See Table S3 for the list of MRM information (Q1 and Q3 mass, DP, CE, and CXP).

Method validation

For the validation of the developed method, synthetic standard molecules were used (18:0/18:1 PA, 17:0/14:1 PI, 16:0/18:1 PI, 18:0/18:2 PS, 16:0/18:1 PS, 17:0/20:4 PI4P and 17:0/20:4 PI(4,5)P₂). Methylated 17:0/17:0 PS was used as the internal standard. See Table S4 for the list of MRM information (Q1 and Q3 mass, DP, CE and CXP).

The limit of detection (LOD), limit of quantification (LOQ), and linearity domain of each of these anionic phospholipids were determined following methylation with the optimized methylation conditions; as well as without any methylation. Methylated 17:0/17:0 PS was used as an internal standard at a concentration of 0.1 $\mu\text{g}/\text{ml}$ in all of these samples. LOD and LOQ corresponded to the injected quantity giving a signal-to-noise ratio (S/N) of 3 and 10, respectively. For the assessment of the linearity domain, increasing quantities of methylated and non-methylated synthetic standard molecules were prepared and analyzed by HPLC-MS/MS with the developed method. The peak asymmetry factor was determined by dividing, at 10% peak height, the peak duration from the peak top to its end point by the peak duration from the peak starting point until the peak top, as previously described (Kantz et al., 2019). All analyses were repeated three times.

Application of the method to biological material

The extraction and semi-quantification of anionic phospholipids were carried out using the developed method for the analysis of different biological materials: (i) leaves from 4-week-old

A. thaliana; (ii) leaves from 4-week-old *N. benthamiana*; (iii) leaves from 1-week-old *Z. mays* cultivated on soil; (iv) entire seedlings, (v) aerial part and (vi) roots from *A. thaliana* seedlings cultivated *in vitro* for 7 days on MS plates; (vii) *A. thaliana* var. *Landsberg erecta* suspension cells were collected 10 days following subculture. Approximately 30 mg of fresh mass was used for each analysis and 15:0/18:1 PA was used as the internal standard. All analyses were repeated 4–5 times. See Table S5 for the list of MRM information (Q1 and Q3 mass, DP, CE and CXP).

Data analysis

HPLC-MS data were treated using the Analyst (AB Sciex 1.6.2) and MultiQuant (AB Sciex 3.0.3) softwares.

ACKNOWLEDGMENTS

We thank Bordeaux-Metabolome platform for lipid analysis (<https://www.biomemb.cnrs.fr/en/lipidomic-plateform/>) supported by Bordeaux-Metabolome Facility-MetaboHUB (grant no. ANR-11-INBS-0010 to SM and LF).

Manon Genva thanks the National Fund for Scientific Research (FNRS, Belgium, through grant 2022/V 3/5/053-40010130-JG/JN-2724) and the University of Liège for mobility grants. This work was supported by the French National Research Agency (project ANR PRC PlayMobil, grant no. ANR-19-CE20-0016 to YB, LF and SM, LF and project ANR PRC CALIPSO grant no. ANR-18-CE13-0025 to YB and LF). Louise Fougère thanks the MESRI fellowship for her PhD. We thank Louise Vilain for manuscript proofreading. The authors declare no conflicts of interest.

AUTHOR CONTRIBUTIONS

LF conceptualized the study and the analytical flowchart. All authors performed the extraction and derivatization methods on lipid standards and biological samples. MG and LF performed the LC-MS² analysis. All authors wrote and corrected the manuscript.

DATA AVAILABILITY STATEMENT

The mass spectrometry lipidomic data have been deposited in the public repository Zenodo (<https://zenodo.org>) under [10.5281/zenodo.7984763](https://zenodo.org/record/10.5281/zenodo.7984763).

SUPPORTING INFORMATION

Additional Supporting Information may be found in the online version of this article.

Figure S1. Presentation of the calibration curves for methylated anionic phospholipids species. Each point corresponds to the mean of 3 repetitions.

Figure S2. Presentation of the calibration curves for non-methylated anionic phospholipids species. Each point corresponds to the mean of 3 repetitions. Of note, no signal was detected for non-methylated PIP and PIP₂ lipids.

Figure S3. Composition of anionic phospholipids in *Nicotiana benthamiana* leaves (a) and *Zea mays* leaves (b). Data are expressed in %, $n = 4$ –5 biological replicates, and the dots show the dispersion of data.

Figure S4. Composition of *Arabidopsis thaliana* anionic phospholipids in 7 days old seedlings (a), aerial part (cotyledons and primary leaves) (b), roots (c), and suspension cells 10 days after subculturing (d). Data are expressed in %, $n = 5$ biological replicates and the dots show the dispersion of data.

Figure S5. Presentation of representative chromatograms from the analysis of lipids from leaves of 4-week-old *A. thaliana* plants with the developed methods following methylation (in blue) and without being methylated (in black).

Table S1. For a reaction time of 10 min at 23°C, presentation of the percentage of the investigated anionic lipid species methylated various times ($n = 3$).

Table S2. List of MRM information (Q1 and Q3 mass, DP, CE, and CXP) used for the analysis of anionic PL commercial mixes in the context of the optimization of chromatographic separation and ionization temperature.

Table S3. List of MRM information (Q1 and Q3 mass, DP, CE, and CXP) used for the analysis of anionic PL commercial mixes in the context of the optimization of the methylation reaction conditions.

Table S4. List of MRM information (Q1 and Q3 mass, DP, CE, and CXP) mass used for the confirmation of the analytical performance of the method.

Table S5. List of MRM information (Q1 and Q3 mass, DP, CE, and CXP) used for the analysis of plant samples.

REFERENCES

- Boutté, Y. & Jaillais, Y. (2020) Metabolic cellular communications: feedback mechanisms between membrane lipid homeostasis and plant development. *Developmental Cell*, **54**, 171–182.
- Buré, C., Ayciriex, S., Testet, E. & Schmitter, J.-M. (2013) A single run LC-MS/MS method for phospholipidomics. *Analytical and Bioanalytical Chemistry*, **405**, 203–213.
- Cai, T., Shu, Q., Liu, P., Niu, L., Guo, X., Ding, X. *et al.* (2016) Characterization and relative quantification of phospholipids based on methylation and stable isotopic labeling. *Journal of Lipid Research*, **57**, 388–397.
- Canez, C.R., Shields, S.W.J., Bugno, M., Wasslen, K.V., Weinert, H.P., Willmore, W.G. *et al.* (2016) Trimethylation enhancement using 13C-diazomethane (13C-TrEnDi): increased sensitivity and selectivity of phosphatidylethanolamine, phosphatidylcholine, and phosphatidylserine lipids derived from complex biological samples. *Analytical Chemistry*, **88**, 6996–7004.
- Clark, J., Anderson, K.E., Juvin, V., Smith, T.S., Karpe, F., Wakelam, M.J.O. *et al.* (2011) Quantification of PtdInsP3 molecular species in cells and tissues by mass spectrometry. *Nature Methods*, **8**, 267–272.
- Devaiah, S.P., Roth, M.R., Baughman, E., Li, M., Tamura, P., Jeannotte, R. *et al.* (2006) Quantitative profiling of polar glycerolipid species from organs of wild-type *Arabidopsis* and a PHOSPHOLIPASE D α 1 knockout mutant. *Phytochemistry*, **67**, 1907–1924.
- Dubois, G.A. & Jaillais, Y. (2021) Anionic phospholipid gradients: an uncharacterized frontier of the plant endomembrane network. *Plant Physiology*, **185**, 577–592.
- Dubots, E., Botté, C., Boudière, L., Yamaryo-Botté, Y., Jouhet, J., Maréchal, E. *et al.* (2012) Role of phosphatidic acid in plant galactolipid synthesis. *Biochimie*, **94**, 86–93.
- Gao, F., McDaniel, J., Chen, E., Rockwell, H., Lynes, M., Tseng, Y.-H. *et al.* (2016) Monoacylglycerol analysis using MS/MSALL quadrupole time of flight mass spectrometry. *Metabolites*, **6**, 25.
- Grison, M.S., Brocard, L., Fouillen, L., Nicolas, W., Wewer, V., Dörmann, P. *et al.* (2015) Specific membrane lipid composition is important for plasmodesmata function in *Arabidopsis*. *Plant Cell*, **27**, 1228–1250.
- Heilmann, M. & Heilmann, I. (2013) Mass Measurement of Polyphosphoinositides by Thin-Layer and Gas Chromatography. In: *Methods in Molecular Biology*. Humana Press Inc., pp. 25–32.
- Heilmann, M. & Heilmann, I. (2015) Plant phosphoinositides—complex networks controlling growth and adaptation. *Biochimica et Biophysica Acta (BBA) – Molecular and Cell Biology of Lipids*, **1851**, 759–769.
- Hou, Q., Ufer, G. & Bartels, D. (2016) Lipid signalling in plant responses to abiotic stress. *Plant, Cell & Environment*, **39**, 1029–1048.
- Huang, Q., Lei, H., Dong, M., Tang, H. & Wang, Y. (2019) Quantitative analysis of 10 classes of phospholipids by ultrahigh-performance liquid chromatography tandem triple-quadrupole mass spectrometry. *Analyst*, **144**, 3980–3987.

- Ito, Y., Esnay, N., Platre, M.P., Wattlelet-Boyer, V., Noack, L.C., Fougère, L. et al. (2021) Sphingolipids mediate polar sorting of PIN2 through phosphoinositide consumption at the trans-Golgi network. *Nature Communications*, **12**, 4267.
- Kantz, E.D., Tiwari, S., Watrous, J.D., Cheng, S. & Jain, M. (2019) Deep neural networks for classification of LC-MS spectral peaks. *Analytical Chemistry*, **91**, 12407–12413.
- König, S., Mosblech, A. & Heilmann, I. (2007) Stress-inducible and constitutive phosphoinositide pools have distinctive fatty acid patterns in *Arabidopsis thaliana*. *The FASEB Journal*, **21**, 1958–1967.
- Lee, J.W., Nishiumi, S., Yoshida, M., Fukusaki, E. & Bamba, T. (2013) Simultaneous profiling of polar lipids by supercritical fluid chromatography/tandem mass spectrometry with methylation. *Journal of Chromatography A*, **1279**, 98–107.
- Li, P., Gawaz, M., Chatterjee, M. & Lämmerhofer, M. (2021) Targeted profiling of short-, medium-, and long-chain fatty acyl-coenzyme As in biological samples by phosphate methylation coupled to liquid chromatography–tandem mass spectrometry. *Analytical Chemistry*, **93**, 4342–4350.
- Lorent, J.H., Levental, K.R., Ganesan, L., Rivera-Longworth, G., Sezgin, E., Doktorova, M. et al. (2020) Plasma membranes are asymmetric in lipid unsaturation, packing and protein shape. *Nature Chemical Biology*, **16**, 644–652.
- Maneta-Peyret, L., Lai, Y.-S., Stefano, G., Fouillen, L., Brandizzi, F. & Moreau, P. (2014) Phospholipid biosynthesis increases in RHD3-defective mutants. *Plant Signaling & Behavior*, **9**, e29657.
- Molnár, G., Fendrych, M. & Friml, J. (2016) Plasma membrane: negative attraction. *Nature Plants*, **2**, 16102.
- Morioka, S., Nakanishi, H., Yamamoto, T., Hasegawa, J., Tokuda, E., Hikita, T. et al. (2022) A mass spectrometric method for in-depth profiling of phosphoinositide regioisomers and their disease-associated regulation. *Nature Communications*, **13**, 83.
- Naramoto, S., Sawa, S., Koizumi, K., Uemura, T., Ueda, T., Friml, J. et al. (2009) Phosphoinositide-dependent regulation of VAN3 ARF-GAP localization and activity essential for vascular tissue continuity in plants. *Development*, **136**, 1529–1538.
- Noack, L.C. & Jaillais, Y. (2017) Precision targeting by phosphoinositides: how PIs direct endomembrane trafficking in plants. *Current Opinion in Plant Biology*, **40**, 22–33.
- Noack, L.C. & Jaillais, Y. (2020) Functions of anionic lipids in plants. *Annual Review of Plant Biology*, **71**, 71–102 Available at: [Accessed March 29, 2023].
- Ogiso, H., Suzuki, T. & Taguchi, R. (2008) Development of a reverse-phase liquid chromatography electrospray ionization mass spectrometry method for lipidomics, improving detection of phosphatidic acid and phosphatidylserine. *Analytical Biochemistry*, **375**, 124–131.
- Okazaki, Y. & Saito, K. (2014) Roles of lipids as signaling molecules and mitigators during stress response in plants. *The Plant Journal*, **79**, 584–596.
- Pi, J., Wu, X. & Feng, Y. (2016) Fragmentation patterns of five types of phospholipids by ultra-high-performance liquid chromatography electrospray ionization quadrupole time-of-flight tandem mass spectrometry. *Analytical Methods*, **8**, 1319–1332.
- Platre, M.P., Bayle, V., Armengot, L. et al. (2019) Developmental control of plant rho GTPase nano-organization by the lipid phosphatidylserine. *Science (1979)*, **364**, 57–62.
- Platre, M.P., Noack, L.C., Doumane, M., Bayle, V., Simon, M.L.A., Maneta-Peyret, L. et al. (2018) A combinatorial lipid code shapes the electrostatic landscape of plant Endomembranes. *Developmental Cell*, **45**, 465–480.e11.
- Pokotylo, I., Kravets, V., Martinec, J. & Ruelland, E. (2018) The phosphatidic acid paradox: too many actions for one molecule class? Lessons from plants. *Progress in Lipid Research*, **71**, 43–53.
- Wang, Y.-S., Yao, H.-Y. & Xue, H.-W. (2016) Lipidomic profiling analysis reveals the dynamics of phospholipid molecules in *Arabidopsis thaliana* seedling growth. *Journal of Integrative Plant Biology*, **58**, 890–902.
- Wasslen, K.V., Canez, C.R., Lee, H., Manthorpe, J.M. & Smith, J.C. (2014) Trimethylation enhancement using diazomethane (TrEnDi) II: rapid in-solution concomitant quaternization of glycerophospholipid amino groups and methylation of phosphate groups via reaction with diazomethane significantly enhances sensitivity in mass spectrometry analyses via a fixed, permanent positive charge. *Analytical Chemistry*, **86**, 9523–9532.
- Wei, F., Wang, X., Ma, H., Lv, X., Dong, X. & Chen, H. (2018) Rapid profiling and quantification of phospholipid molecular species in human plasma based on chemical derivatization coupled with electrospray ionization tandem mass spectrometry. *Analytica Chimica Acta*, **1024**, 101–111.
- Yamaoka, Y., Shin, S., Lee, Y., Ito, M., Lee, Y. & Nishida, I. (2021) Phosphatidylserine is required for the Normal progression of cell plate formation in *Arabidopsis* root meristems. *Plant & Cell Physiology*, **62**, 1396–1408.
- Yamaoka, Y., Yu, Y., Mizoi, J., Fujiki, Y., Saito, K., Nishijima, M. et al. (2011) PHOSPHATIDYLSERINE SYNTHASE1 is required for microspore development in *Arabidopsis thaliana*. *The Plant Journal*, **67**, 648–661.
- Yin, Y., Raboanatahiry, N., Chen, K., Chen, X., Tian, T., Jia, J. et al. (2022) Class A lysophosphatidic acid acyltransferase 2 from *Camelina sativa* promotes very long-chain fatty acids accumulation in phospholipid and triacylglycerol. *Plant Journal*, **112**, 1141–1158.
- Zhang, T.-Y., Li, S., Zhu, Q.-F., Wang, Q., Hussain, D. & Feng, Y.-Q. (2019) Derivatization for liquid chromatography-electrospray ionization-mass spectrometry analysis of small-molecular weight compounds. *TrAC Trends in Analytical Chemistry*, **119**, 115608.