



HAL
open science

Assessing Time Series Correlation Significance: A Parametric Approach with Application to Physiological Signals

Johan Medrano, Abderrahmane Kheddar, Sofiane Ramdani

► **To cite this version:**

Johan Medrano, Abderrahmane Kheddar, Sofiane Ramdani. Assessing Time Series Correlation Significance: A Parametric Approach with Application to Physiological Signals. *Biomedical Signal Processing and Control*, 2024, 94, pp.106235. 10.1016/j.bspc.2024.106235 . hal-04373781

HAL Id: hal-04373781

<https://hal.science/hal-04373781v1>

Submitted on 5 Jan 2024

HAL is a multi-disciplinary open access archive for the deposit and dissemination of scientific research documents, whether they are published or not. The documents may come from teaching and research institutions in France or abroad, or from public or private research centers.

L'archive ouverte pluridisciplinaire **HAL**, est destinée au dépôt et à la diffusion de documents scientifiques de niveau recherche, publiés ou non, émanant des établissements d'enseignement et de recherche français ou étrangers, des laboratoires publics ou privés.

1 Assessing Time Series Correlation Significance: A Parametric
2 Approach with Application to Physiological Signals

3 Johan Medrano^{1,*}, Abderrahmane Kheddar^{2,3}, and Sofiane Ramdani³

4 ¹The Wellcome Centre for Human Neuroimaging, UCL Queen Square Institute of
5 Neurology, London, WC1N 3AR, UK

6 ²CNRS-AIST Joint Robotics Laboratory, IRL3218, Tsukuba 305-8560, Japan

7 ³CNRS-University of Montpellier LIRMM, UMR5506, Interactive Digital Human,
8 Montpellier, France

9 *Corresponding author: johan.medrano@ucl.ac.uk

10 **Abstract**

11 Correlation coefficients play a pivotal role in quantifying linear relationships between ran-
12 dom variables. Yet, their application to time series data is very challenging due to temporal
13 dependencies. This paper introduces a novel approach to estimate the statistical significance
14 of correlation coefficients in time series data, addressing the limitations of traditional methods
15 based on the concept of effective degrees of freedom (or effective sample size, ESS). These effec-
16 tive degrees of freedom represent the independent sample size that would yield comparable test
17 statistics under the assumption of no temporal correlation. We propose to assume a parametric
18 Gaussian form for the autocorrelation function. We show that this assumption, motivated by a
19 Laplace approximation, enables a simple estimator of the ESS that depends only on the tempo-
20 ral derivatives of the time series. Through numerical experiments, we show that the proposed
21 approach yields accurate statistics while significantly reducing computational overhead. In ad-
22 dition, we evaluate the adequacy of our approach on real physiological signals, for assessing the
23 connectivity measures in electrophysiology and detecting correlated arm movements in motion

1 capture data. Our methodology provides a simple tool for researchers working with time series
2 data, enabling robust hypothesis testing in the presence of temporal dependencies.

3 **1 Introduction**

4 Correlation coefficients, such as Pearson’s or Spearman’s, are fundamental tools for assessing
5 linear relationships between random variables. Although originally not designed for dependent
6 samples, these coefficients are widely used with time series in diverse fields. Notable examples
7 can be found in neuroimaging, where Pearson’s correlation coefficient is used to construct func-
8 tional brain networks from functional Magnetic Resonance Imaging (fMRI) data (Fox et al.,
9 2005; Van Dijk et al., 2010), electrophysiology data (Zhang et al., 2021; Naira et al., 2019; Ji
10 et al., 2019; Zhong et al., 2022) or to relate brain signals to other behavioral parameters, such
11 as movement data (Lu et al., 2021). In this paper, we address the estimation of the statistical
12 significance of correlation coefficients for time series.

13 Fisher’s variance-stabilizing transformation is useful to obtain simple bounds and significance
14 of a correlation coefficient r . Under the null hypothesis that two sets of n independent data
15 points are uncorrelated, the null distribution of the Fisher-transformed variable $z = \operatorname{arctanh}(r)$
16 is approximately normally distributed with mean 0 and standard deviation $1/\sqrt{n-3}$. In other
17 words, we have

$$\sqrt{n-3} \operatorname{arctanh}(r) \sim \mathcal{N}(0, 1) \tag{1}$$

18 In real time-series data, the assumption of pairwise independence underlying traditional
19 correlation coefficient tests often falters due to dependencies between consecutive observations.
20 When data exhibit temporal dependencies, Eq. (1) is overconfident and fails to account for the
21 loss of degrees of freedom due to temporal correlations. A pivotal solution, pioneered by Bartlett
22 in 1935 (Bartlett, 1935), adjusts for this change of degrees of freedom by introducing a number
23 of “effective degrees of freedom”, or “effective sample size” (ESS), representing the independent
24 sample size producing comparable test statistics. Under the null hypothesis that two sets of n
25 dependent data points, with ESS ν ($\nu \leq n$), are uncorrelated, we can simply rewrite Eq. (1) to

1 obtain the approximate distribution as:

$$\sqrt{\nu - 3} \operatorname{arctanh}(r) \sim \mathcal{N}(0, 1) \quad (2)$$

2 This enables hypothesis testing even when actual samples show temporal dependencies.

3 The approach pioneered by Bartlett, that had various extensions, e.g., (Bartlett, 1946; Bayley
4 and Hammersley, 1946; Quenouille, 1947; Pyper and Peterman, 1998; Afyouni et al., 2019), relies
5 on estimating the ESS from the sum of the product of the autocorrelation functions (ACFs) of
6 the time series. Let ρ_k and γ_k be the autocorrelation at lag k of two time series, resp. x and y ,
7 of n samples each. The ESS of the correlation coefficient between x and y is (Quenouille, 1947):

$$\nu = n \left(\rho_0 \gamma_0 + 2 \sum_{k=1}^{n-1} \frac{(n-k)}{n} \rho_k \gamma_k \right)^{-1} \quad (3)$$

8 While this estimator of the ESS has been widely adopted, it requires computing the sample
9 ACF which can be computationally demanding and can also yield inaccurate estimates of the
10 ESS due to accumulating noise (in the sum of Eq. (3)).

11 In this work, we assume a parametric form for the ACF to simplify the computation and
12 estimation of the ESS. In particular, we show that the sum in Eq. (3) converges to an integral
13 which can be analytically solved under a Gaussian (Laplace) approximation. The resulting
14 expression relates the ESS to the average second spectral moment, also called roughness, of the
15 pair of time series to correlate. Importantly, the roughness of a series can be estimated from
16 the variance of its temporal derivatives. This scaffolds the central result of this work: for two
17 processes x and y of length n with temporal derivatives \dot{x} and \dot{y} , the number of effective degrees
18 of freedoms ν is approximately:

$$\nu = n \sqrt{\frac{\operatorname{var}(\dot{x}) + \operatorname{var}(\dot{y})}{2\pi}} \quad (4)$$

19 We show that this formula yields accurate estimation of the ESS and effectively provides a
20 computationally effective method to evaluate the significance of correlation coefficients.

21 This article is organized as follows. First, we present the key contributions of our work, which
22 encompass the derivation of the asymptotic expression for ESS, a straightforward approximation
23 for Gaussian autocorrelation, and the introduction of an estimator based on the variance of
24 the temporal derivatives of the processes. Then, we validate our approach through numerical

1 experiments, demonstrating its effectiveness and its computational efficacy. Finally, we apply our
 2 methodology to real data to (i) highlight the significance of power-based connectivity measures
 3 in electrophysiology, and (ii) distinguish correlated and uncorrelated arm captured motion data.

4 **2 A parametric estimator of the effective sample size**

5 Our work builds on estimating the ESS using a Gaussian approximation to the ACF. In this
 6 section we show that the ESS converges to an integral; then that a Laplace approximation of this
 7 integral relates the ESS to the signals roughness; and finally, that common roughness estimators
 8 can be used to build an estimator of the ESS.

9 This work focuses on estimating the ESS for the correlation of smooth, wide-sense stationary
 10 (WSS) stochastic processes. A smooth WSS stochastic process x is defined by convolving white
 11 noise w with a smooth (C^∞), square-integrable function $K : \mathbb{R} \rightarrow \mathbb{R}^+$, in other word:

$$x(t) = \int K(t-s)w(s)ds \quad (5)$$

12 For clarity and brevity, we reuse the same notation throughout this paper. By default x
 13 and y are two smooth WSS stochastic processes with zero mean, variances resp. σ_x and σ_y ,
 14 and autocorrelations functions ρ and γ . For simplicity, we restrict our result section to the case
 15 where both x and y have the same autocorrelation, i.e., $\rho = \gamma$. This restriction is moreover
 16 motivated in Section 2.2.

17 **2.1 Asymptotic expression for the ESS**

18 This section introduces an asymptotic form for the ESS. We consider Eq. (3) for the ESS in
 19 the case of infinitely large n and infinitely small sampling interval of the ACF. Under these
 20 conditions, the sum in Eq. (3) converges to

$$\lim_{n \rightarrow +\infty} \frac{n}{\nu} = \int_{-\infty}^{+\infty} \rho(\tau)\gamma(\tau)d\tau \quad (6)$$

21 This yields a new asymptotic ESS expression, ν_∞ :

$$\nu_\infty = n \left(\int_{-\infty}^{+\infty} \rho(\tau)\gamma(\tau)d\tau \right)^{-1} \quad (7)$$

1 The resulting integral formulation is pivotal in deriving analytical expressions for the ESS
2 of stochastic processes with known ACF. As for processes with known autocorrelation function,
3 we can directly evaluate Eq. (7). In the next section, we develop a generic approximation based
4 on a Laplace approximation of the integral.

5 **2.2 Closed-form expression under a Laplace approximation**

6 A general approach to approximate the integral in the asymptotic ESS expression is to use
7 Laplace’s method. In this section, we derive a general approximation to asymptotic ESS
8 (Eq. (7)), based on a Laplace approximation of the integral (Eq. (6)). In brief, Laplace’s method
9 is used to approximate the integral of a arbitrary function with a unique global maximum using
10 a simpler, Gaussian function around its peak (Penny et al., 2011). Typically in physiological
11 signals, ACFs have a mode at lag 0 and decrease to 0 for large lags, although they might exhibit
12 long-range correlations. Thus, the area under the curve of the product of two such ACFs is ex-
13 pected to be contained around 0, with an attenuation of long-range correlations. This justifies
14 using Laplace’s method to approximate the asymptotic ESS expression.

15 To derive the expression under Laplace approximation, note that the second-order expansion
16 of the ACFs ρ and γ around their mode at $\tau = 0$ is similar to processes with Gaussian ACFs

$$\hat{\rho}(\tau) = \exp(-\frac{1}{2}|\rho''(0)|\tau^2) \qquad \hat{\gamma}(\tau) = \exp(-\frac{1}{2}|\gamma''(0)|\tau^2) \qquad (8)$$

17 where $\rho''(0)$ and $\gamma''(0)$ are the second spectral moment of the processes, i.e., the second-order
18 derivatives of the ACFs at 0. The second spectral moment is a universal measure of “roughness”
19 in the literature of stochastic processes (Friston et al., 2008; Cox and Miller, 2017). From this
20 Gaussian form, we can explicitly evaluate the integral in Eq. (7):

$$\int_{-\infty}^{\infty} \hat{\rho}(\tau)\hat{\gamma}(\tau)d\tau = \sqrt{\frac{2\pi}{|\rho''(0)| + |\gamma''(0)|}} \qquad (9)$$

21 By substituting Eq. (9) in Eq. (7), the ESS under a Laplace approximation is

$$\nu_{\infty} = n\sqrt{\frac{|\rho''(0)| + |\gamma''(0)|}{2\pi}} \qquad (10)$$

22 To summarise, we can use a Laplace (Gaussian) approximation to approximate the ESS. This is

1 equivalent to fitting the ACF using a one-parameter family of Gaussian functions parameterised
 2 by their second spectral moment, or roughness. This allows to derive a simple expression for
 3 the ESS that only involves the second spectral moment of each process.

4 **Remark 1.** *When $\rho''(0) = \gamma''(0)$, Eq. (10) reduces to $n\sqrt{|\rho''(0)|/\pi}$. When $\rho''(0) \neq \gamma''(0)$, the*
 5 *ESS of the pair of signals given by Eq. (10) is similar to that of a fictive pair of signals with equal*
 6 *roughness $(|\rho''(0)| + |\gamma''(0)|)/2$. Thus, there is no need to consider furthermore the case with*
 7 *heterogeneous roughness, as it can be mathematically reduced to the case with a (homogeneous)*
 8 *roughness given by the arithmetic mean of the original roughnesses.*

9 2.3 Estimating the second spectral moment

10 A well-established result from stochastic process theory is that the roughness can be conveniently
 11 estimated from the variance of the first-order temporal derivatives of the process (Cox and
 12 Miller, 2017; Adler, 2010; Worsley, 1996). In this section, we leverage this result to construct
 13 an estimator of the asymptotic ESS.

14 Let x and y be two processes with autocorrelation functions ρ and γ and temporal derivatives
 15 \dot{x} and \dot{y} . The second spectral moments $|\rho''(0)|$ and $|\gamma''(0)|$ can be estimated from the variance
 16 of the temporal derivatives of the process, i.e., $|\rho''(0)| = \text{var}(\dot{x})$ and $|\gamma''(0)| = \text{var}(\dot{y})$. Plugging
 17 in Eq. (10), we obtain an estimator of the ESS:

$$\nu_\infty = n\sqrt{\frac{\text{var}(\dot{x}) + \text{var}(\dot{y})}{2\pi}} \quad (11)$$

18 By construction, this new parametric estimator for the ESS depends only on the variance of
 19 the temporal derivatives of the time series. As such, its consistency and unbiasedness derive
 20 directly from those of the variance estimators (from direct application of the continuous mapping
 21 theorem).

22 **Remark 2.** *The second spectral moment is also related to the expected number of zero-crossings*
 23 *of a process by Rice's formula (Rice, 1944). For didactic purposes, we show an alternative ESS*
 24 *estimator based on Rice's formula in Appendix A.*

1 **3 Numerical validation**

2 We conduct numerical experiments on Gaussian processes with Gaussian autocorrelation func-
3 tions (GPGA) to assess the validity and limitations of our approach. The numerical results are
4 organised in four parts. First, we evaluate the quality of fitting the squared autocorrelations
5 from the process roughness. Second, we compare the quality of the estimates of the ESS, cor-
6 responding to the integral of the squared ACFs, with existing methods. Then, we compare the
7 statistics yielded by our method with existing ones. Finally, we investigate the computational
8 performance of our approach.

9 **3.1 Assessment of parametric autocorrelation function estimates**

10 The method we present leverages the analytical evaluation of the ESS of a pair of stochastic
11 processes from their roughness, estimated from the variance of the temporal derivatives. Here,
12 we verify whether this method can accurately estimate the ACF of the process, when the ACF
13 is known to be Gaussian.

14 We generate 2000 sample paths from GPGA with different roughness levels. We then retrieve
15 the squared autocorrelation using the variance of the derivatives. To sample a sample path from
16 a GPGA with roughness r , we convolve a unit white Gaussian noise sample with a Gaussian
17 kernel of variance $2/r$ as per (Friston et al., 2008). We then apply Eq. (4) to determine its
18 second spectral moment from the variance of the process temporal derivatives.

19 Figure 1 illustrates that low roughness results in significant biases in squared sample auto-
20 correlation functions, leading to ESS underestimation. This bias becomes clear in Figure 1(f),
21 where the grey curves diverge significantly from their expected near-zero values. This figure
22 underscores the merit of predetermining the functional form of the ACF, thereby filtering out
23 spurious long-term correlations. Furthermore, our method consistently aligns more closely with
24 the theoretical ACF relatively to the direct sample squared ACF.

25 In conclusion, explicitly formulating the functional form of the ACF filters out errant long-
26 term correlations otherwise amplified by traditional ESS estimators based on sample autocor-
27 relations. This leads to more accurate and consistent ACF estimates across varying roughness
28 scales. However, we note that the variance of the squared ACF appears to be inversely propor-
29 tional to roughness. This issue is further investigated in subsequent sections.

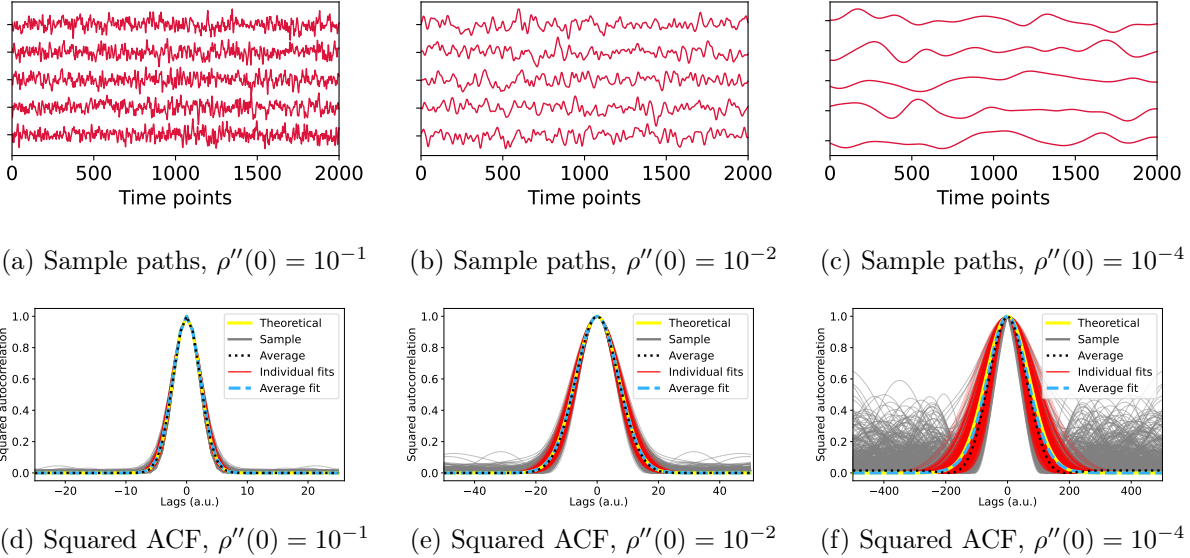


Figure 1: Sample paths and squared autocorrelation functions for roughness values $\rho''(0)$. Rows one and two display, respectively, samples of Gaussian processes for different roughness values and their squared autocorrelation functions. Notably, the squared ACF plays a crucial role in ESS estimation. The plots showcase various ACF estimations: theoretical (plain yellow), sample (plain grey), average of sample (dotted black), Gaussian fit based on estimated roughness (plain red), and Gaussian fit based on average roughness (dashed blue). The bias in sample ACFs, evident in the grey curves, increases as roughness decreases due to increasing random long-range correlations. On the other hand, the Gaussian fits (plain red) remain unbiased at large lags, ensuring the ACF retains its Gaussian form.

1 3.2 Assessment of parametric ESS estimates

2 This section deals with the influence of the roughness estimator's variance on the variance of
3 the estimated sum of squared autocorrelation and that of the ESS. We also examine how these
4 relate to the length of series.

5 We sampled 1000 sample paths from GPGA, adjusting roughness between 10^{-6} and 1. Each
6 sample path's roughness is then estimated. Using this roughness estimate, we compute the
7 ESS using Eq. (11). Furthermore, we determine the ACF of the process using the inverse
8 Fourier transform of the sample path's power spectral density (PSD). The latter is estimated
9 either through the FFT or the Welch periodogram with a 256-point window having 128-point
10 overlap (Welch, 1967). The ESS is then obtained from the ACF using Eq. (3). We replicate this
11 procedure for series lengths of 500, 1000, and 2000 points. For comparison, the ESS is normalized
12 by series length, yielding an ESS factor. Figure 2 contrasts estimated and theoretical roughness,
13 as well as the ESS factors from various methods against those from theoretical roughness.

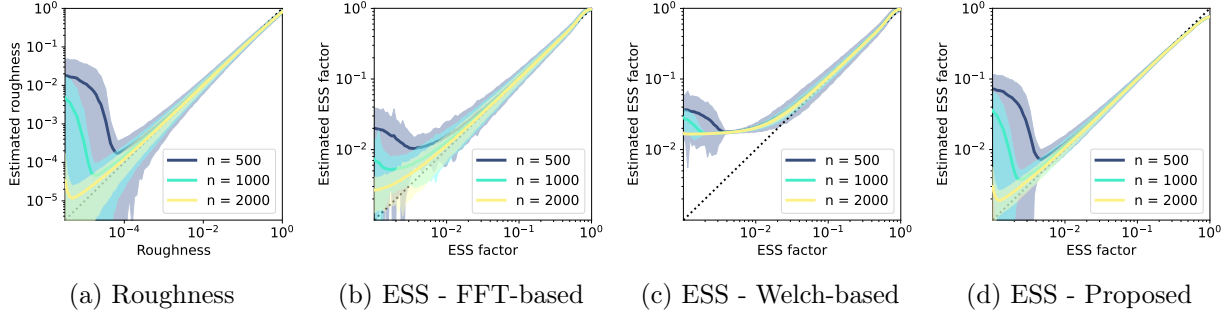


Figure 2: a) Estimated roughness as a function of the process roughness, for series of 500 points (dark blue), 1000 points (light blue), and 2000 points (yellow). b-d) Estimated ESS factor as a function of the process true ESS, computed from Eq. (10), for series of 500 points (dark blue), 1000 points (light blue), and 2000 points (yellow) for the FFT-based (b), Welch-based (c), and proposed approaches (d). Shaded areas correspond to the 95% confidence intervals.

1 From Figure 2(a), it is clear that roughness estimates share a similar trend. For minuscule
2 roughness values, bias emerges. Extended series better approximate low roughness, hinting that
3 biases result from series that are too short relative to their roughness. As expected from their
4 relationship (Eq. (7)), ESS factors derived from roughness mirror this trend.

5 Interestingly, ESS factors from both FFT and Welch-based squared ACF methods also ex-
6 hibit similar biases. The Welch periodogram’s bias appears even at elevated ESS factors due
7 to its fixed window size. From a statistical standpoint, biases and high variances are expected
8 when approaching a near-zero sample size.

9 Conclusively, our method offers a closer ESS estimate to true values than traditional methods,
10 especially for low ESS factors corresponding to low roughness. This confirms the ability of our
11 method to derive the ESS from process temporal derivative variances, showing at superior
12 correlation coefficient statistic accuracy, which we confirm in the subsequent section.

13 3.3 Statistics under the null hypothesis

14 We have previously demonstrated the efficiency of the proposed method in fitting the squared
15 autocorrelation function of a process and its superior accuracy in ESS estimation across varied
16 roughness scales. Now, we assess how this improved ESS estimation influences the computa-
17 tion of probabilities under the null hypothesis, i.e., the p -value, especially under two distinct
18 roughness scales.

19 We set our method against those reliant on the sum of squared autocorrelation, where ACF
20 is computed via FFT or the Welch periodogram. We generated 5000 pairs of 2000-points-long

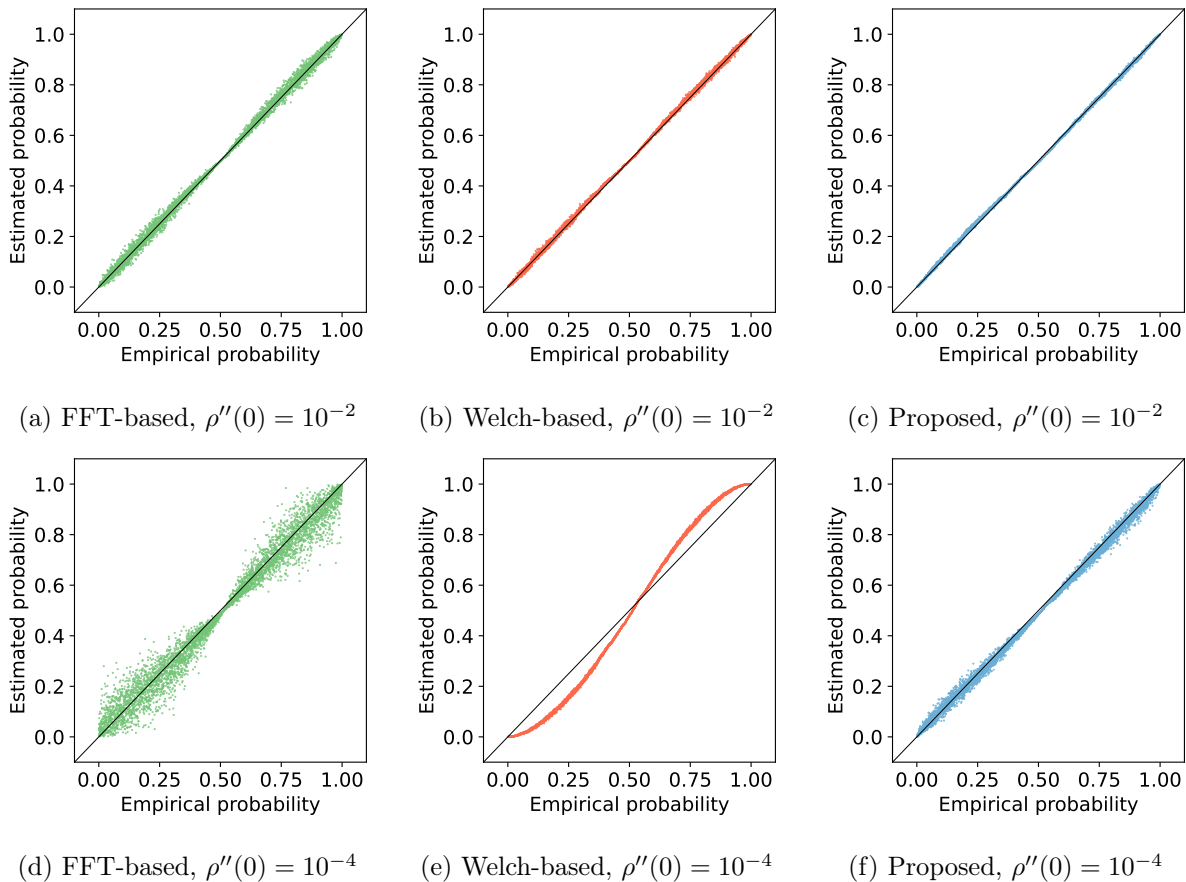


Figure 3: Estimated probability against empirical probability for the different approaches. The first row illustrates a roughness of 10^{-2} , while the second showcases 10^{-4} . Each column represents different estimation methods: FFT-based (green), Welch-based (red), and our method (blue).

1 sample paths from processes with specified roughness and determined their correlation coefficient.
 2 cent. Being inherently uncorrelated, these sample paths effectively sample the null distribution
 3 of GPGA at that roughness. Consequently, the empirical probability of each sample correlation
 4 coefficient converges to its probability under the null hypothesis. Each sample's empirical prob-
 5 ability can be compared with the probability yielded by any of the methods. These results are
 6 represented as probability-probability plots in Figure 3 for roughness values of 10^{-2} and 10^{-4} .

7 At a roughness of 10^{-2} , the methods show comparable statistical outputs. The FFT-based
 8 p -values display more dispersion than both proposed and Welch-based methods, which are
 9 markedly analogous. Reducing roughness to 10^{-4} modifies the statistics for each method. Both
 10 our method and the FFT-based exhibit increased p -value variability. In contrast, the Welch
 11 method displays pronounced bias with minimal variability.

1 The trends in Figure 3 are more comprehensible when compared with the ESS estimates
2 presented in Figure 2. The transition from a roughness of 10^{-2} to 10^{-4} equates to a shift from
3 an ESS factor of roughly 10^{-1} to 10^{-2} . Such changes mirror the variances and biases seen in our
4 ESS estimates, which directly affect p -value computation. Given that our method consistently
5 provides superior ESS estimations across roughness values, it is hence inferred to offer enhanced
6 statistics.

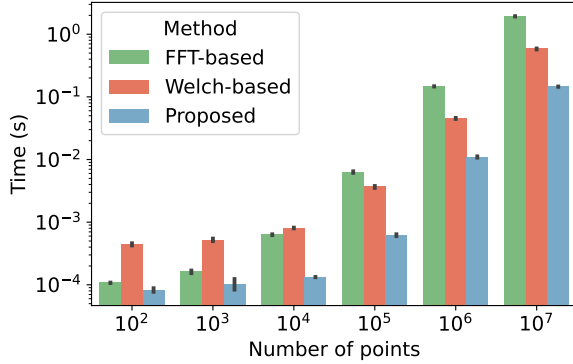
7 In summary, our numerical analyses confirm the paramountcy of a parametric autocorrelation
8 function, where the unique parameter is estimated via the process’s second spectral moment.
9 This method circumvents biases introduced by random long-range dependencies, resulting in
10 more accurate sample p -values for correlation coefficients. In subsequent sections, we advocate
11 for GPGA’s aptness in real-world applications, such as neuroimaging data connectivity analysis
12 and movement trajectory correlations.

13 **3.4 Comparison of computational performance**

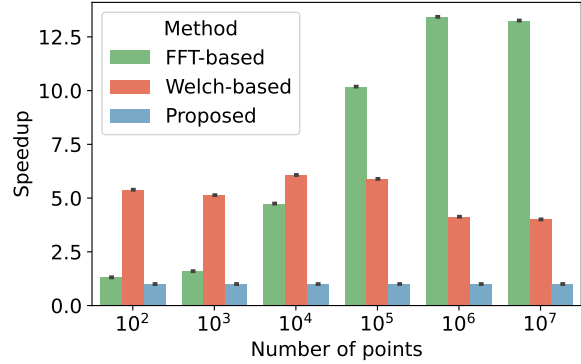
14 In this section, we evaluate the performance gain of our approach. The main difference with
15 existing methods is that we avoid explicit evaluation of the ACF by using a parametric ACF,
16 which only requires to estimate the average series roughness.

17 To evaluate the impact of series length on the computation time and speedup, we generate
18 pairs of sample paths from a GPGA process with roughness 10^{-3} having varying length, from
19 100 to 10^7 points with 10 fold increments. For each pairs of paths, we compute the ESS using
20 FFT-based and Welch-based computation of the ACFs, and with our approach. The FFT-based
21 ACF is obtained using `numpy`’s `fft` and `ifft` functions (Harris et al., 2020). The Welch-based
22 ACF is computed using `scipy`’s `welch` function from the `signal` package with a window length
23 of 256 points (100 points for the 100 points series) and `numpy`’s `ifft` (Virtanen et al., 2020).
24 Our approach uses `numpy`’s `diff` and `var` to compute the variance of the temporal derivatives
25 of the process. The results are obtained on a laptop equipped with an 12-core Intel Xeon W-
26 10855M CPU and 32Gb of RAM running Ubuntu 22.04 and Python 3.8. For each approach,
27 we computed the timings from 100 loops and present the mean and standard deviation across 7
28 different runs.

29 We report the results on Figure 4. The average computation times obtained by the proposed
30 approach are significantly below that of FFT-based and Welch-based methods. This result is
31 consistent across all different number of points. Looking at the speedup confirms the compu-



(a) Computation times



(b) Speedup of proposed approach

Figure 4: a) Comparison of the computation time for varying number of points from 100 to 10^7 . b) Speedup of our approach, obtain as the average computation time of each method divided by the average computation time of the proposed method. For instance, a speedup of 5 means that our approach divides by 5 the average computation time.

1 tational advantage of the proposed approach. In average across different number of points, the
 2 proposed approach is 7.4 times faster than an FFT-based approach. This speedup is negligible
 3 for short time series (resp. 1.3 and 1.6 for 100 and 1000 points) but significant for long time se-
 4 ries (10.2 to 13.4 for 10^5 to 10^7). The speedup from Welch-based approach is relatively constant
 5 across time series length due to the fixed window length, with an average speedup of 5.1.

6 To sum-up, our proposed approach, based on the temporal derivatives of the time series,
 7 gives a significant speedup as compared to other approaches based on the computation of the
 8 ACF. This computational argument motivates using a parametric Gaussian form of the ACF in
 9 applications where timing is critical or where large amounts of data have to be processed; for
 10 instance, when evaluating correlations of brain activity between a large number of brain regions.

11 4 Application to physiological signals

12 4.1 Use-case 1: Evaluating power-based connectivity from electro- 13 physiology data

14 4.1.1 Context and motivation

15 Electroencephalography (EEG) captures the electric potentials on the scalp. Its low-cost and
 16 high-temporal-resolution make EEG a particularly appealing neuroimaging technique to eval-

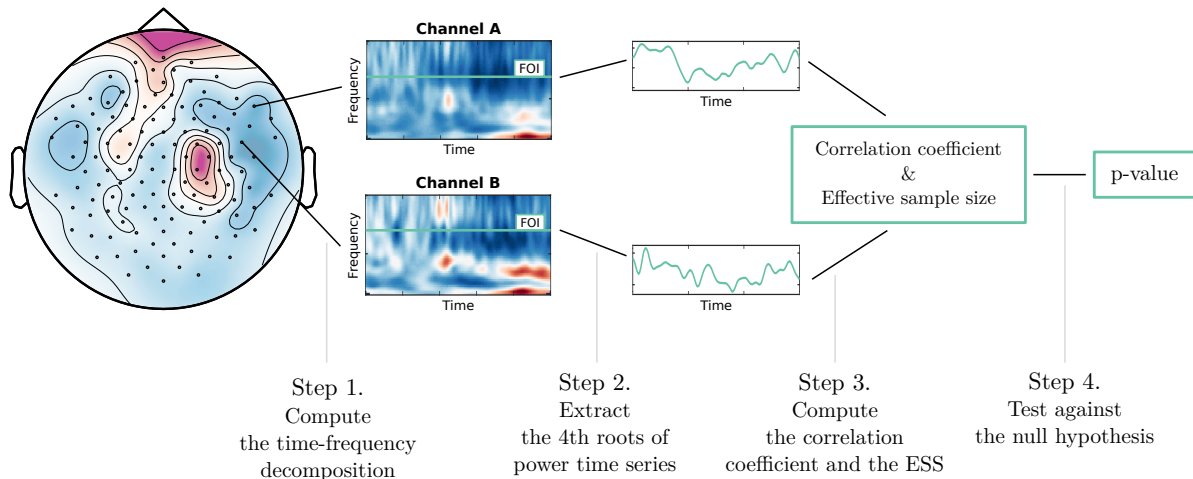


Figure 5: Procedure to assess the connectivity of two EEG channels at a particular frequency of interest (FOI).

1 uate the functional connectivity between brain regions. A standard approach, power-based
 2 connectivity analysis, measures functional connectivity by evaluating the correlation between
 3 the time-frequency power of the signal at two different locations (Cohen, 2014). Several methods
 4 exist to perform power-based connectivity analysis, but the correlation between wavelet-based
 5 time-frequency representations is particularly interesting within the scope of this work.

6 The time course of power can be obtained using a continuous wavelet transform with a Morlet
 7 wavelet. A Morlet wavelet combines a Gaussian kernel with a complex sinusoid at a specified
 8 frequency. Therefore, a continuous wavelet transform with a Morlet wavelet introduces a form of
 9 temporal smoothing with a Gaussian kernel. Intuitively, if the width of the Gaussian smoothing
 10 kernel is large enough relative to the autocorrelation of the signal, the resulting time series will
 11 have roughly a Gaussian autocorrelation. In this case, one can consider testing the strength
 12 of the correlation between two power time series under the null hypothesis that the signals
 13 are two uncorrelated GPGA. The overall procedure is illustrated in Figure 5. This approach
 14 allows a more efficient analysis of connectivity significance without relying on computationally
 15 demanding methods.

16 This section aims at gaining some insight on whether the null hypothesis of uncorrelated
 17 GPGA processes might yield appropriate statistics. In contrast to the numerical experiments
 18 section, we cannot sample from the null distribution of correlation coefficient between band-
 19 power time series. Thus, we can only investigate a few characteristics of the data to assess the

1 validity of our approach. Indeed, this section echoes the first step of statistical analysis in real
2 world application, where statisticians have no access to the data generative distribution and
3 shall assess the suitability of their model.

4 **4.1.2 Data presentation and preprocessing**

5 We analyse a dataset containing EEG recordings of a subject listening to continuous, naturalistic
6 speech (Di Liberto et al., 2015; Crosse et al., 2016). The subject listened to a classic work read
7 by an English speaker. EEG signals were recorded from a single participant with a Biosemi
8 system having 128 channels and a sampling rate of 512 Hz. Prior to analysis, the data has been
9 filtered between 1 and 15 Hz and downsampled to 128Hz. We then computed the time-frequency
10 representation of the EEG signals using a continuous wavelet transform. We used Morlet wavelet
11 with 7 cycles to produce time-frequency representation with a sufficient temporal smoothness
12 to fall under our Gaussian assumptions. Finally, we take the fourth root of the power to make
13 the data marginally Gaussian (Hawkins and Wixley, 1986).

14 **Remark 3.** *Note that selecting the number of cycles in the wavelet effectively selects the degree*
15 *of smoothness of the signal. This shows that the number of cycles is related to the ESS. In*
16 *Appendix B, we give a formula giving the ESS as a function of the number of cycles.*

17 **4.1.3 Adequacy of GPGA assumptions for wavelet-based EEG power**

18 Here, we show that our approach yields appropriate statistics for power-based connectivity anal-
19 ysis. We first look at whether the signals have an approximately Gaussian autocorrelation and
20 whether our approach provides a good fit of the squared autocorrelation function. We compare
21 results given by FFT-based and Welch-based approaches with our approach, and analyse the
22 results in the light of our numerical results. Finally, we compare the ESS and 97.5% quantile
23 given by all three approaches with real data and sample GPGA sample paths with matching
24 roughness.

25 Figure 6 summarizes the properties of the data. In particular, we show a time-frequency plot
26 (Fig. 6 (a) and (b)) and some samples power time series at different frequencies. Intuitively,
27 the time course of power at lower frequencies is smoother than for higher frequencies. This is
28 confirmed by looking at the roughness of the signals across channels, whose mean increase with
29 frequency (Fig. 6 (d)). In addition, we display (Fig. 6 (c)) the marginal distribution of the signals

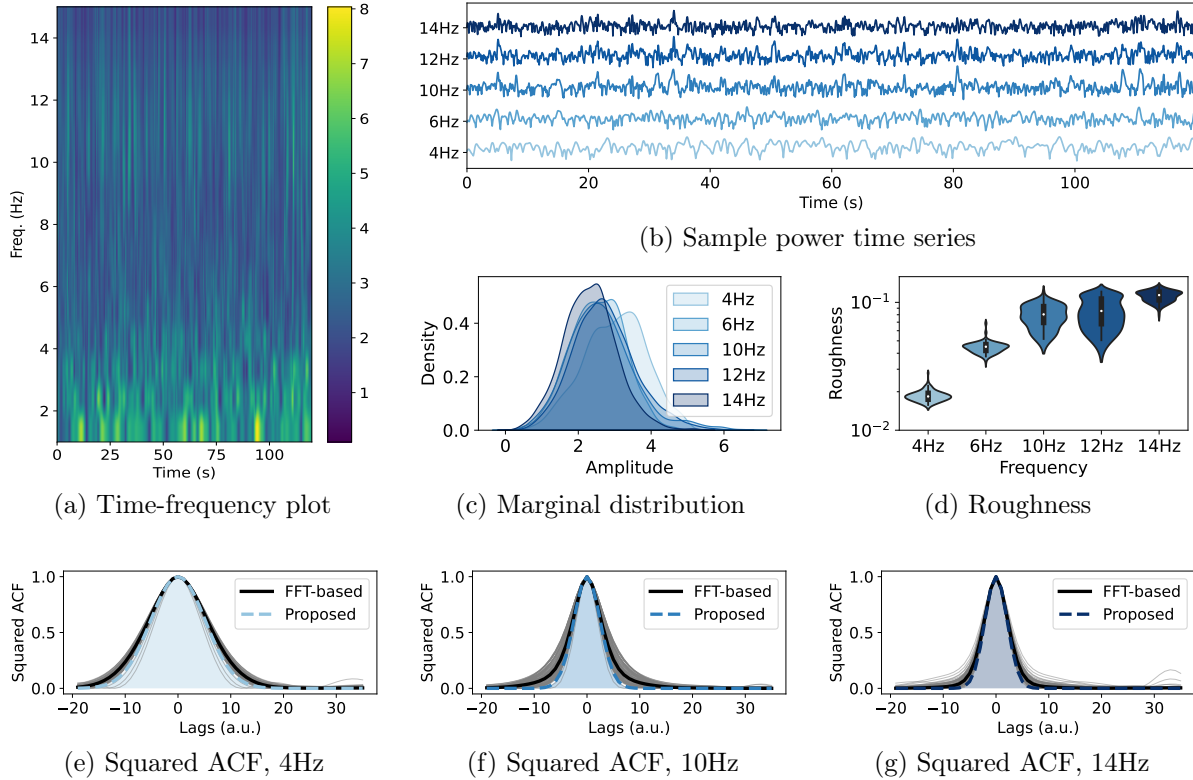


Figure 6: (a) Time-frequency plot of the fourth root of power for channel A9. (b) Sample fourth-root of power time series at different frequencies. (c) Marginal distribution of fourth-root of power time series across channels. (d) Roughness across channels at different frequency. (e-g) Squared ACF at 4 Hz, 10 Hz, and 14 Hz. Gray lines indicate different channels, the black line indicates the mean squared ACF across channels, the dotted blue line indicates the mean fit using the proposed approach, and the filled blue area shows the area that is integrated in the denominator of the ESS expression.

1 across channels to inspect its normality – a key element in mandating using Pearson’s correlation
 2 coefficient instead of Spearman’s rank correlation. Finally, we inspect (Fig. 6 (e), (f), and (g))
 3 the squared ACF at 4 Hz, 10 Hz, and 14 Hz, and compare it against the Gaussian fit obtained
 4 from the signals roughness. We observe that the squared ACF is roughly Gaussian, despite a
 5 slower decrease (lower kurtosis) which might come from autocorrelations inherent to the nature
 6 of the signal. Overall, these results suggest that GPGA might provide a good approximation
 7 for the data and that our approach gives appropriate statistics.

1 4.1.4 Assessment of ESS and quantiles for wavelet-based EEG power

2 To confirm these results, we evaluate the ESS factor for all possible between-channel pairs
3 connectivity at each given frequency. In addition, for each signal we generate a random GPGA
4 sample path with matching length and roughness, and compute the ESS factor for all pairs of
5 random sample paths. This gives us a hint on how the ESS factor would behave if the sample
6 paths were effectively sampled from the null hypothesis, i.e., GPGA with matching length
7 and roughness. We complement this analysis by looking at the 97.5% quantile of both real
8 and simulated data, under the null hypothesis. Any correlation coefficient greater than the
9 97.5% quantile – or lower than its opposite – would be effectively considered as significant with
10 $p < 0.05$. The 97.5% quantile is computed by the inverse Fisher transform of the 97.5% quantile
11 of the Gaussian distribution:

$$Q_{97.5\%} = \tanh(1.96/\sqrt{\nu_\infty}) \quad (12)$$

12 The ESS factor and 97.5% quantile for both real and simulated data are presented on Figure 7.

13 We observe that the ESS factor for real EEG signal increases with frequency. This is expected
14 as the roughness of power time series increases with the frequency, as shown in Figure 6. This
15 increased ESS factor results in a decreased 97.5% quantile. Indeed, as the effective sample
16 size increases and statistical power increases, we can arbitrate on the rejection of the null
17 hypothesis at lower values of correlation coefficient. This is conform to the role played by the
18 ESS in Eq. (12).

19 Interestingly, we see that both FFT-based and Welch-based approaches give lower values of
20 ESS, and higher 97.5% quantile value, than our proposed approach. This effect is the strongest at
21 10 Hz and 12 Hz. Comparing each figure with its analogous generated under GPGA assumptions,
22 we see that under GPGA assumptions all three methods yield approximately the same values
23 of ESS factor and 97.5% quantile. Because these differences are stronger at 10 Hz and 12 Hz,
24 i.e., in the well-identified alpha band, we hypothesis that task-related modulations of the power
25 task cause variations in the autocorrelation of the power; which induce variability and shift in
26 the ESS factor and related quantiles. Note that the size of this effect on the 97.5% quantile is
27 relatively small (less than 0.02). We argue that this is negligible in most cases, especially given
28 the variability of the sample estimates of the roughness or ACFs.

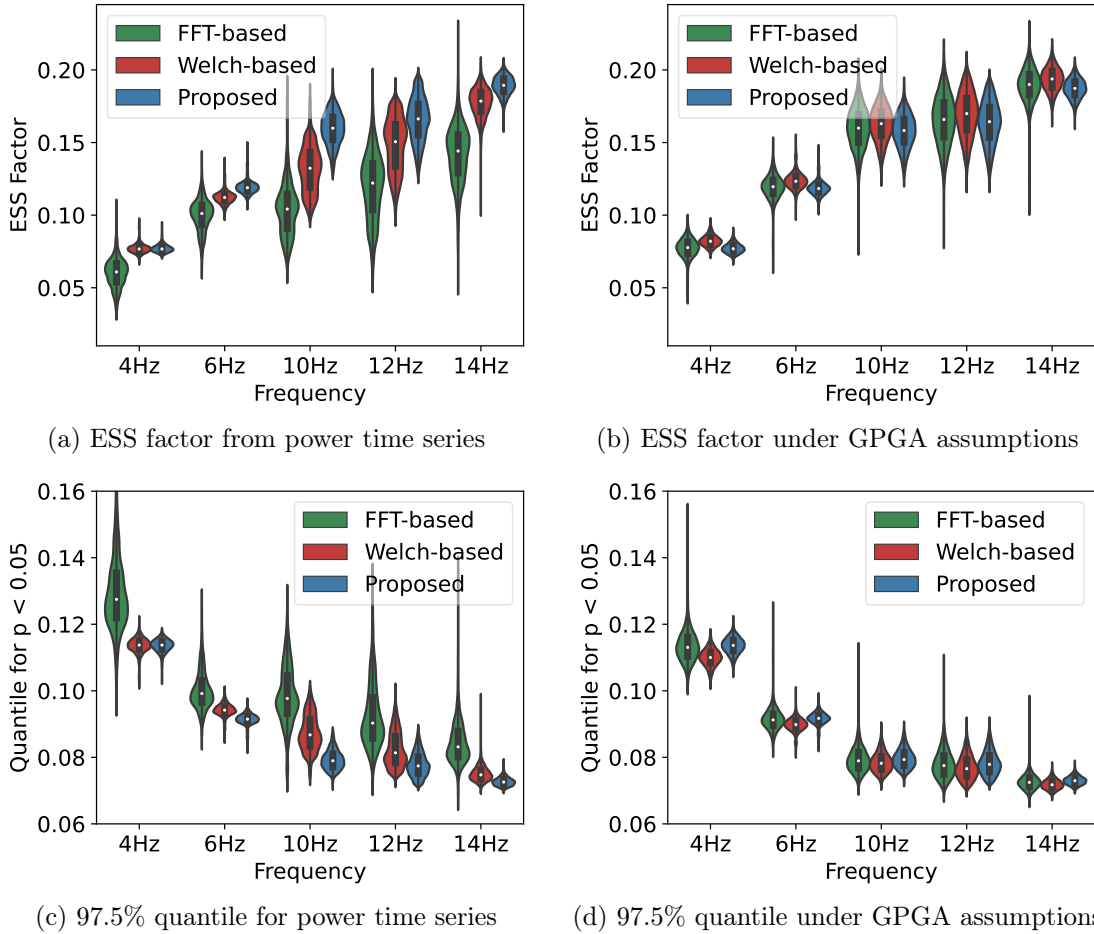


Figure 7: (a) Distribution of the ESS factor evaluated with the FFT-based (green), the Welch-based (red), and our approach (blue) for pair of power time series at a given frequency. (b) Similar to (a) for random GPGA sample paths with roughness matching that of every pair of signals at a given frequency. (c) Distribution of the 97.5% quantile obtained from the ESS of each pair of real time series. (d) Similar to (c) for random GPGA sample paths with matching roughness.

1 4.2 Use-case 2: Detecting correlation between random movement tra- 2 jectories

3 This section investigates the suitability of our approach for biological signals. We analyse the
 4 statistics of movement trajectories as recorded by a motion capture system. The signals analysed
 5 in the present section are in nature complementary to the time course of EEG power analysed in
 6 the previous section. This is because they possess a very low roughness and are not marginally
 7 Gaussian. Thus, we aim at evaluating our proposed approach on less ‘well-behaved’ biological
 8 signals.

1 The motion capture data analysed in this section comes from a single subject performing
2 self-paced unilateral elbow flexion/extension. The data was acquired during a study on the
3 EEG correlates of arm movements. The experimental procedure conformed the Declaration of
4 Helsinki and was approved by the local ethics committee. The subject was instructed to move
5 continuously in a self-paced pseudo-random manner for 40 runs (one per side) of 23.5 seconds.
6 The position of body segments was recorded using an XSens Awinda suit at a 60 Hz rate and
7 the elbow flexion angle was obtained as the angle between the upper arm and forearm.

8 We computed the marginal distribution, squared ACF, and roughness of each trial. In
9 addition, we computed the ESS factors and the 97.5% quantile for the correlation coefficient
10 between every possible pair of trials. Similarly to the previous section, we generated for each
11 trial a random GPGA sample path with matching roughness, and computed the same quantities
12 as for the real data. Results are presented in Figure 8.

13 Looking first at the statistics of the joint trajectories, we see that the joint angle distribution
14 is not Gaussian, nor even unimodal. In practice, this would motivate to use Spearman’s corre-
15 lation coefficient instead of Pearson’s. Additionally, we observe that the squared ACFs display
16 correlations for lags around 200 points, that are not matching the Gaussian profile. On the
17 other hand, the main peak of the squared ACF seem well approximated by the Gaussian fit.
18 We also observe that the signal roughness is quite low, with an average roughness of 3.7×10^{-3} .

19 Interestingly, the ESS factors and 97.5% quantiles computed for both the real joint trajecto-
20 ries and random GPGA processes are relatively similar, with differences being much smaller than
21 the spread of the values. This result highlight that overall, the ESS of pairs of joint trajectories
22 from this dataset are quite similar to that of GPGA with matching roughness. Consequently,
23 quantiles are also relatively similar. This comparative results shows that, despite being not
24 marginally Gaussian and having long-range autocorrelations not fitting to the Gaussian profile,
25 the significance of the correlation between joint trajectories from this dataset could be accurately
26 computed under GPGA assumptions.

27 5 Conclusion and future directions

28 In this work, we considered the problem of testing for significant correlation between autocor-
29 related time series. Several works have proposed to use an ESS to correct the test distribution.
30 The ESS correspond to the size of a sample of independent observations that would produce the

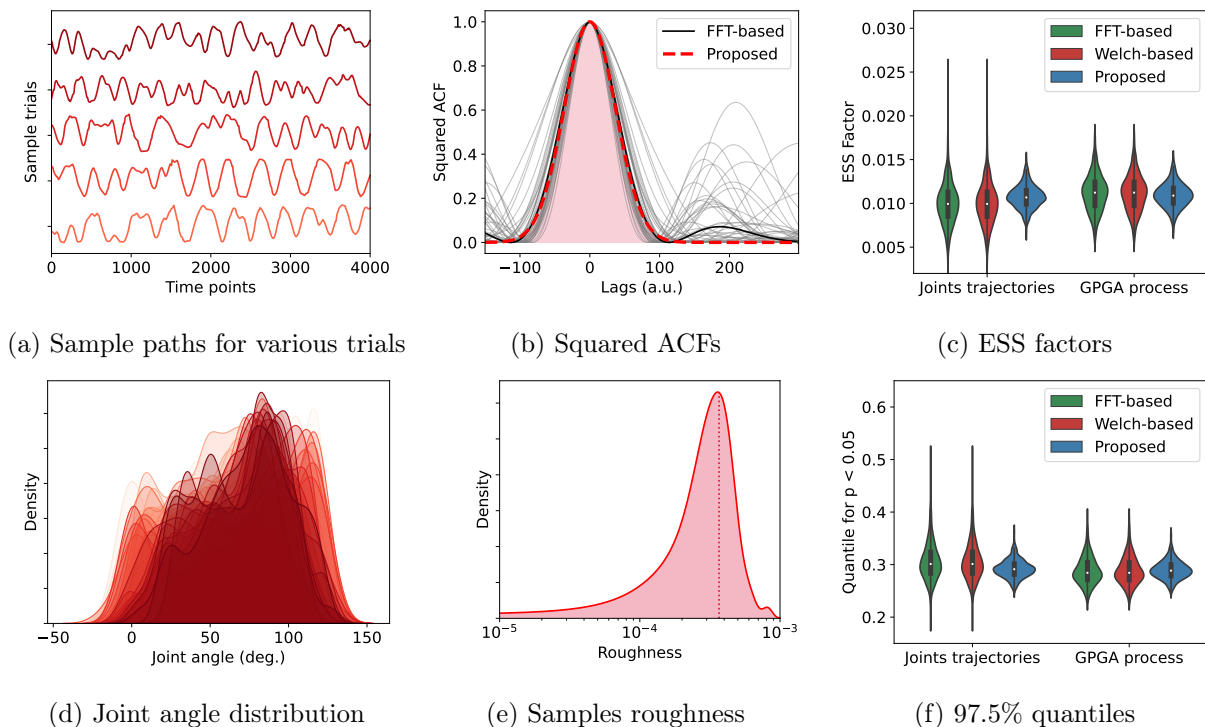


Figure 8: (a) Sample joint trajectories. (b) Squared ACFs computed from the FFT of the trials (gray), their average (black), and the Gaussian fit obtained from the average sample roughness (dashed red). The area under the curve (red) corresponds to the inverse of the mean ESS factor for the proposed approach. (c) ESS factors computed from joint trajectories and random GPGA sample paths with matching roughness, for all possible pairs of trials. (d) Marginal distribution of the joint angle for all trials. (e) Kernel density plot of the distribution of the roughness over trials. (f) 97.5% quantile computed from joint trajectories and random GPGA sample paths with matching roughness, for all possible pairs of trials.

1 same statistics. These approaches require to estimate the autocorrelation function, which can
 2 be problematic when testing correlation between two unique and smooth series.

3 Here, we derive the asymptotic expression of the ESS. This asymptotic expression can be used
 4 with parametric forms of ACF to analytically derive the ESS of a given process. In particular,
 5 we show that the expression for the ESS takes a simple form when considering a Gaussian
 6 approximation of the ACF. This simple expression depends on the second-order derivatives of
 7 the autocorrelation function at its mode, which is a measure of the roughness of the process
 8 and relates to several of its statistical properties. Roughness can be easily estimated from the
 9 variance of the first-order temporal derivatives of the process.

10 We conducted numerical experiments to validate the proposed method. We observe that our

1 approach retrieves the statistics of correlation coefficients under the null hypothesis that signals
2 are GPGA. For this particular type of process, our approach outperforms classical approaches,
3 yielding robust estimate of the statistics under a large range of roughness. In addition, our
4 approach shows relatively higher computational performances compared to alternative methods.

5 In a second part, we show that some data issued from biological signals satisfy GPGA
6 assumptions. Our approach seem adequate to test for significant correlations between brain
7 regions, when used with power-based connectivity analysis of electrophysiological data. Our
8 method also applies well to random joint trajectories, as measured from a motion capture
9 system.

10 Overall, obtained results suggest that our approach yields accurate and robust statistics
11 under assumptions that can be found in real biological signal. More generally, we claim that
12 using a parametric form of autocorrelation can yield more accurate statistics, without being
13 overly restrictive on the form of the process. In particular, we think that more advanced methods
14 for parameter estimation could allow better estimation of the autocorrelation function. However,
15 as often with parametric approaches, there is no one-size-fits-all form of the autocorrelation
16 function, and the statistician holds the responsibility to evaluate the adequacy of the model for
17 the data under study.

18 In addition to correlation coefficients, our approach can be straightforwardly extended to
19 linear regression. A pivotal assumption of linear regression is the independence of residuals.
20 An assumption often violated in time series data due to inherent temporal dependencies. The
21 parametric ESS estimators derived here can be seamlessly adapted to assess the significance
22 of regression coefficients in linear regression models applied to time series data. Thus, our
23 approach not only fortifies the foundation of correlation analysis in time series but also extends
24 its robustness to the broader landscape of linear regression.

1 Supporting Information

2 The Wellcome Centre for Human Neuroimaging is supported by core funding from Wellcome
3 [203147/Z/16/Z]. This research was partly supported by a grant from the French Ministère de
4 l'Éducation Nationale, de l'Enseignement Supérieur et de la Recherche.

5 Declaration of Generative AI and AI-assisted technologies in 6 the writing process

7 During the preparation of this work the author(s) used OpenAI ChatGPT 4 in order to improve
8 the readability and phrasing. After using this tool/service, the author(s) reviewed and edited
9 the content as needed and take(s) full responsibility for the content of the publication.

10 References

- 11 Adler, R. J. (2010) *The geometry of random fields*. SIAM.
- 12 Afyouni, S., Smith, S. M. and Nichols, T. E. (2019) Effective degrees of freedom of the pearson's
13 correlation coefficient under autocorrelation. *NeuroImage*, **199**, 609–625.
- 14 Bartlett, M. (1935) Some aspects of the time-correlation problem in regard to tests of signifi-
15 cance. *Journal of the Royal Statistical Society*, **98**, 536–543.
- 16 Bartlett, M. S. (1946) On the theoretical specification and sampling properties of autocorrelated
17 time-series. *Supplement to the Journal of the Royal Statistical Society*, **8**, 27–41.
- 18 Bayley, G. and Hammersley, J. (1946) The " effective " number of independent observations in
19 an autocorrelated time series. *Supplement to the Journal of the Royal Statistical Society*, **8**,
20 184–197.
- 21 Cohen, M. X. (2014) *Analyzing neural time series data: theory and practice*. MIT press.
- 22 — (2019) A better way to define and describe morlet wavelets for time-frequency analysis.
23 *NeuroImage*, **199**, 81–86.
- 24 Cox, D. R. and Miller, H. D. (2017) *The theory of stochastic processes*. Routledge.

- 1 Crosse, M. J., Di Liberto, G. M., Bednar, A. and Lalor, E. C. (2016) The multivariate temporal
2 response function (mtrf) toolbox: a matlab toolbox for relating neural signals to continuous
3 stimuli. *Frontiers in human neuroscience*, **10**, 604.
- 4 Di Liberto, G. M., O’sullivan, J. A. and Lalor, E. C. (2015) Low-frequency cortical entrainment
5 to speech reflects phoneme-level processing. *Current Biology*, **25**, 2457–2465.
- 6 Fox, M. D., Snyder, A. Z., Vincent, J. L., Corbetta, M., Van Essen, D. C. and Raichle, M. E.
7 (2005) The human brain is intrinsically organized into dynamic, anticorrelated functional
8 networks. *Proceedings of the National Academy of Sciences*, **102**, 9673–9678.
- 9 Friston, K. J., Trujillo-Barreto, N. and Daunizeau, J. (2008) Dem: a variational treatment of
10 dynamic systems. *Neuroimage*, **41**, 849–885.
- 11 Harris, C. R., Millman, K. J., van der Walt, S. J., Gommers, R., Virtanen, P., Cournapeau, D.,
12 Wieser, E., Taylor, J., Berg, S., Smith, N. J., Kern, R., Picus, M., Hoyer, S., van Kerkwijk,
13 M. H., Brett, M., Haldane, A., del Río, J. F., Wiebe, M., Peterson, P., Gérard-Marchant, P.,
14 Sheppard, K., Reddy, T., Weckesser, W., Abbasi, H., Gohlke, C. and Oliphant, T. E. (2020)
15 Array programming with NumPy. *Nature*, **585**, 357–362. URL: [https://doi.org/10.1038/
16 s41586-020-2649-2](https://doi.org/10.1038/s41586-020-2649-2).
- 17 Hawkins, D. M. and Wixley, R. (1986) A note on the transformation of chi-squared variables to
18 normality. *The American Statistician*, **40**, 296–298.
- 19 Ji, L., Wang, H., Zheng, T., Hua, C. and Zhang, N. (2019) Correlation analysis of eeg alpha
20 rhythm is related to golf putting performance. *Biomedical Signal Processing and Control*, **49**,
21 124–136.
- 22 Lu, Y., Wang, H., Qi, Y. and Xi, H. (2021) Evaluation of classification performance in human
23 lower limb jump phases of signal correlation information and lstm models. *Biomedical Signal
24 Processing and Control*, **64**, 102279.
- 25 Naira, C. A. T., Jos, C. et al. (2019) Classification of people who suffer schizophrenia and healthy
26 people by eeg signals using deep learning. *International Journal of Advanced Computer
27 Science and Applications*, **10**.
- 28 Penny, W. D., Friston, K. J., Ashburner, J. T., Kiebel, S. J. and Nichols, T. E. (2011) *Statistical
29 parametric mapping: the analysis of functional brain images*. Elsevier.

- 1 Pyper, B. J. and Peterman, R. M. (1998) Comparison of methods to account for autocorrelation
2 in correlation analyses of fish data. *Canadian Journal of Fisheries and Aquatic Sciences*, **55**,
3 2127–2140.
- 4 Quenouille, M. H. (1947) Notes on the calculation of autocorrelations of linear autoregressive
5 schemes. *Biometrika*, **34**, 365–367.
- 6 Rice, S. O. (1944) Mathematical analysis of random noise. *The Bell System Technical Journal*,
7 **23**, 282–332.
- 8 Van Dijk, K. R., Hedden, T., Venkataraman, A., Evans, K. C., Lazar, S. W. and Buckner, R. L.
9 (2010) Intrinsic functional connectivity as a tool for human connectomics: theory, properties,
10 and optimization. *Journal of neurophysiology*, **103**, 297–321.
- 11 Virtanen, P., Gommers, R., Oliphant, T. E., Haberland, M., Reddy, T., Cournapeau, D.,
12 Burovski, E., Peterson, P., Weckesser, W., Bright, J., van der Walt, S. J., Brett, M., Wilson,
13 J., Millman, K. J., Mayorov, N., Nelson, A. R. J., Jones, E., Kern, R., Larson, E., Carey,
14 C. J., Polat, İ., Feng, Y., Moore, E. W., VanderPlas, J., Laxalde, D., Perktold, J., Cimrman,
15 R., Henriksen, I., Quintero, E. A., Harris, C. R., Archibald, A. M., Ribeiro, A. H., Pedregosa,
16 F., van Mulbregt, P. and SciPy 1.0 Contributors (2020) SciPy 1.0: Fundamental Algorithms
17 for Scientific Computing in Python. *Nature Methods*, **17**, 261–272.
- 18 Welch, P. (1967) The use of fast fourier transform for the estimation of power spectra: a method
19 based on time averaging over short, modified periodograms. *IEEE Transactions on audio and*
20 *electroacoustics*, **15**, 70–73.
- 21 Worsley, K. (1996) An unbiased estimator for the roughness of a multivariate gaussian random
22 field. *Montreal: Department of Mathematics and Statistics, University of McGill*.
- 23 Zhang, S., Chen, D., Ranjan, R., Ke, H., Tang, Y. and Zomaya, A. Y. (2021) A lightweight so-
24 lution to epileptic seizure prediction based on eeg synchronization measurement. *The Journal*
25 *of Supercomputing*, **77**, 3914–3932.
- 26 Zhong, L., He, S., Yi, F., Li, X., Wei, L., Zeng, C., Huang, Z. and Li, Z. (2022) Spatio-
27 temporal evaluation of epileptic intracranial eeg based on entropy and synchronization: A
28 phase transition idea. *Biomedical Signal Processing and Control*, **77**, 103689.

1 **A Link with Rice’s formula**

2 The second spectral moment is related to the average number of zero-crossings N_0 of the process
3 by Rice’s formula (Rice, 1944) (for derivation, see (Cox and Miller, 2017, Ch. 7.4, Example 7.9)):

$$N_0 = n\sqrt{|\rho''(0)|}/\pi \tag{13}$$

4 This expression can be used to express the ESS in terms of expected number of zero-crossings.
5 We observe that

$$\nu_\infty = \sqrt{\pi}N_0 \tag{14}$$

6 This gives a simple way to estimate the ESS of empirical time series from the mean number of
7 zero-crossings.

8 **B Analytical ESS for Wavelet-based correlations**

9 This section concerns testing correlations in band-limited power using time-frequency representa-
10 tions, particularly with Morlet wavelets, which align well with the ESS theory for quasi-Gaussian
11 autocorrelation processes.

12 Morlet wavelets, defined as the product of a complex sinusoid with a Gaussian, provide a
13 time-frequency representation of a time series through the wavelet transform. Specifically, a
14 wavelet w is given by (Cohen, 2019):

$$w = \exp(-j2\pi ft - t^2/(2\sigma^2)) \tag{15}$$

15 where t is time, f is frequency, and σ is tied to the number of cycles N_c as $\sigma = N_c/2\pi f$.

16 For signals with a rapidly decaying autocorrelation compared to the Gaussian kernel width
17 in the wavelet, the time-frequency representation remains relatively smooth. Considering a time
18 series derived from the log-power (or other normalisation function) of a wavelet transform at a
19 given frequency, the autocorrelation ρ is approximately Gaussian with second-spectral moment

$$|\rho''(0)| \approx \frac{\pi^2 f^2}{N_c^2} \tag{16}$$

1 To determine the significance of the correlation between band-limited power, the number
2 of cycles in Morlet wavelets can be adjusted, providing a direct assessment of the ESS for the
3 correlations. If two series, derived from the same number of cycles but different frequencies f_1
4 and f_2 , are correlated, their ESS is:

$$\nu_\infty = \frac{n}{N_c} \sqrt{\frac{\pi}{2}} \sqrt{f_1^2 + f_2^2} \quad (17)$$

5 For $f_1 = f_2 = f$, the ESS is simply $\nu_\infty = \sqrt{\pi}nf/N_c$. Importantly, the chosen number of cycles
6 determines the ESS of power correlations.