

Communication from the Scientific Standardization Committees of the International Society on Thrombosis and Haemostasis on vascular endothelium-related biomarkers in disseminated intravascular coagulation

Toshiaki Iba, Jerrold H. Levy, Jecko Thachil, Sophie Susen, Marcel Levi, Ecaterina Scarlatescu

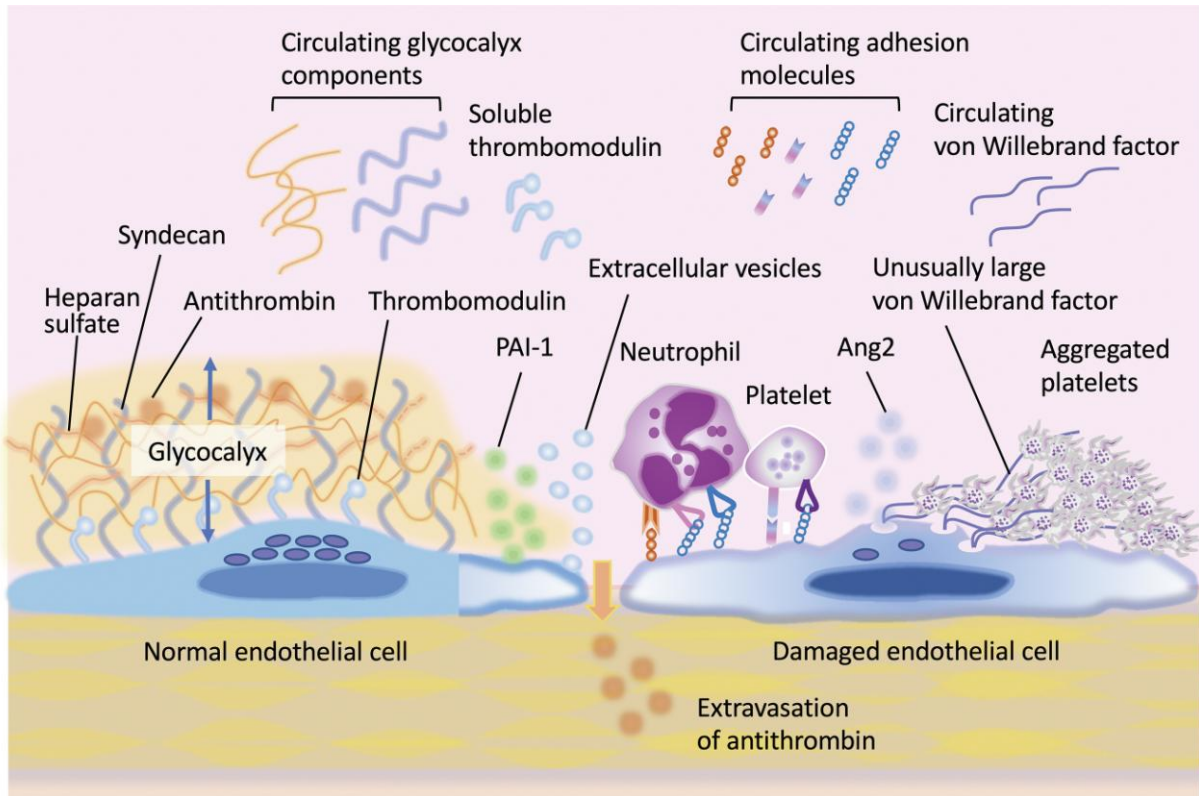


Table 1. ISTH overt DIC, ISTH SIC, and JSTH DIC scoring systems.

Item	Score	ISTH overt-DIC	ISTH SIC	JSTH DIC (infection)
		Range	Range	Range
Platelet count ($\times 10^9/L$)	3	–	–	≤ 5
	2	< 50	< 100	$> 5, \leq 80$
	1	$\geq 50, < 100$	$\geq 100, < 150$	$> 8, \leq 120$
	+1			$\geq 30\%$ decrease in 24h
FDP (D-dimer) ($\mu g/mL$)	3	Strong increase	–	≥ 40
	2	Moderate increase	–	$\geq 20, < 40$
	1	–	–	$\geq 10, < 20$
Prothrombin Time (PT ratio)	2	≥ 6 seconds	> 1.4	≥ 1.67
	1	≥ 3 seconds, < 6 seconds	$> 1.2, \leq 1.4$ (PT INR)	$\geq 1.25, < 1.67$ (PT ratio)
Fibrinogen (g/mL)	1	< 100	–	–
Antithrombin activity (%)	1	–	–	≤ 70
TAT, SF, or PF1+2	2			≥ 2 -fold or more
SOFA score	2	–	≥ 2	–
	1	–	1	–
Total score for DIC or SIC		≥ 5	≥ 4	≥ 6

DIC, disseminated intravascular coagulation; ISTH, International Society on Thrombosis and Haemostasis; JSTH, Japanese Society on Thrombosis and Hemostasis; PF1+2, prothrombin fragment 1+2; SF, soluble fibrin; SIC, sepsis-induced coagulopathy; SOFA, sequential organ failure assessment; TAT, thrombin-antithrombin complex.

Total SOFA score is the sum of 4 items (respiratory SOFA, cardiovascular SOFA, hepatic SOFA, and renal SOFA).