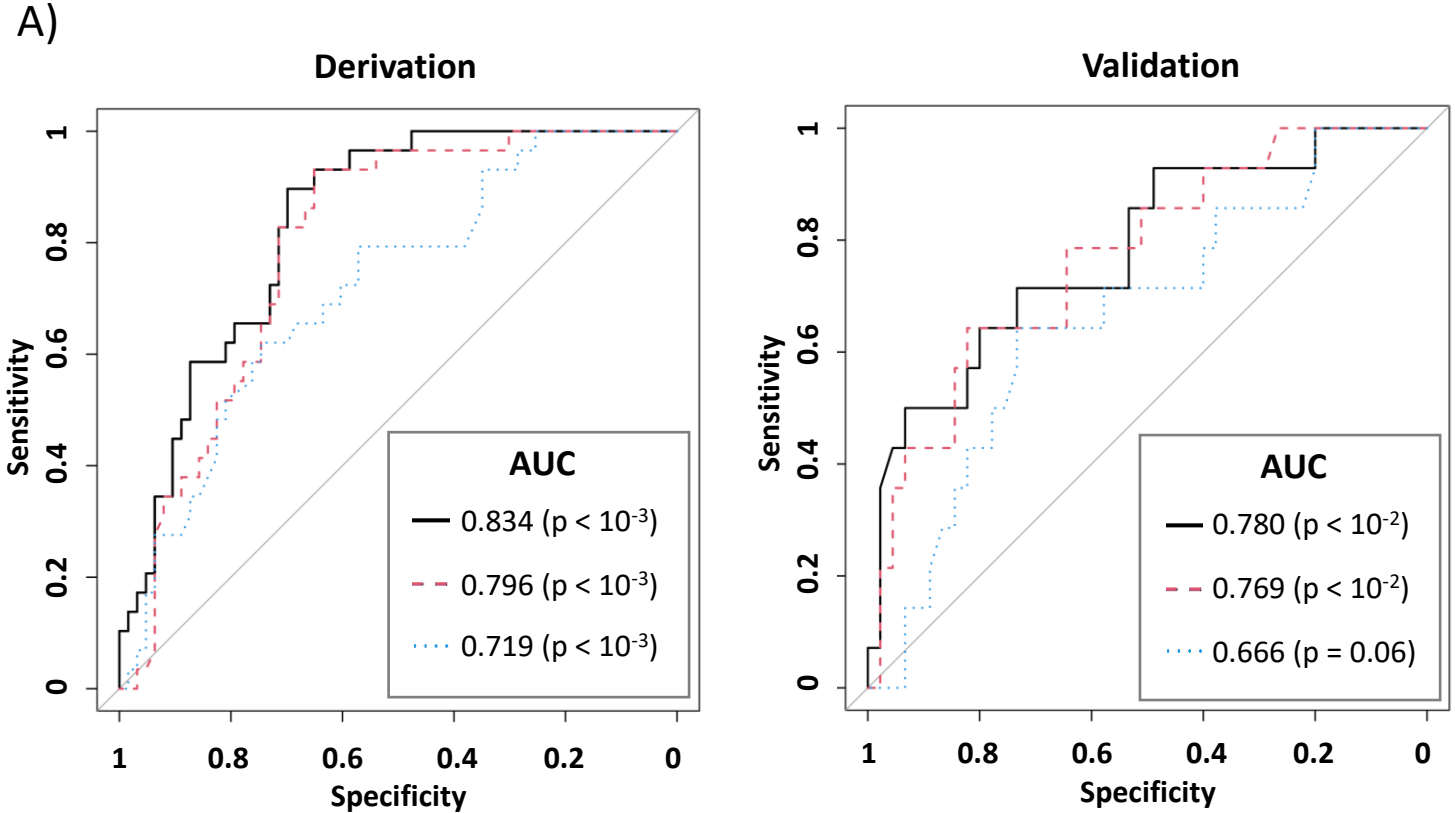


Figure 2



— CERES score: $- 1.04 * \text{platelets (G/l)} + 5.12 * \text{FiO2 (\%)} + 10.4 * \text{endocan (ng/ml)}$

- - 2-variables score: $- 1.09 * \text{platelets (G/l)} + 4.11 * \text{FiO2 (\%)}$

... Platelets

B)

Score	Derivation (n = 92)		Validation (n = 59)	
	Se	Sp	Se	Sp
140	1.00	0.48	0.93	0.44
171	0.97	0.59	0.86	0.51
205	0.93	0.65	0.71	0.60
216	0.90	0.70	0.71	0.62
232	0.83	0.71	0.71	0.73
240	0.72	0.73	0.64	0.73
260	0.66	0.79	0.57	0.80
263	0.62	0.81	0.57	0.80
287	0.59	0.87	0.57	0.82
322	0.48	0.89	0.50	0.89
333	0.45	0.90	0.50	0.93