



**HAL**  
open science

## With or without him? Experimental evidence on cash grants and gender-sensitive trainings in Tunisia

Jules Gazeaud, Nausheen Khan, Eric Mvukiyehe, Olivier Sterck

### ► To cite this version:

Jules Gazeaud, Nausheen Khan, Eric Mvukiyehe, Olivier Sterck. With or without him? Experimental evidence on cash grants and gender-sensitive trainings in Tunisia. *Journal of Development Economics*, 2023, 165, pp.103169. 10.1016/j.jdeveco.2023.103169 . hal-04364356

**HAL Id: hal-04364356**

**<https://hal.science/hal-04364356>**

Submitted on 26 Dec 2023

**HAL** is a multi-disciplinary open access archive for the deposit and dissemination of scientific research documents, whether they are published or not. The documents may come from teaching and research institutions in France or abroad, or from public or private research centers.

L'archive ouverte pluridisciplinaire **HAL**, est destinée au dépôt et à la diffusion de documents scientifiques de niveau recherche, publiés ou non, émanant des établissements d'enseignement et de recherche français ou étrangers, des laboratoires publics ou privés.

# With or Without Him?

## Experimental Evidence on Cash Grants and Gender-Sensitive Trainings in Tunisia

Jules Gazeaud, Nausheen Khan, Eric Mvukiyehé, and Olivier Sterck\*

### Abstract

Is it possible to stimulate women’s income-generating activities by relaxing their financial and human capital constraints? Does involving husbands help or hinder the effort? We examine these questions using a three-arm randomized-controlled trial with 2000 women in Tunisia. Women in the two treatment arms were offered a large cash grant (worth USD768 in PPP terms) and a gender-sensitive financial training. In one of the treatment arms, women were additionally encouraged to bring their male partner to the training. Two years after the program, we show that the treatments stimulated women’s income-generating activities, but only when partners were not involved, and with no downstream effects on women’s agency. Independently of partners’ participation, impacts on household living standards were overwhelmingly positive, suggesting that the program was highly cost-effective. Overall, our results highlight the difficulty of stimulating women’s agency in traditional societies, and suggest that involving men in women’s empowerment programs can backfire.

*JEL Classification:* J16, L25, L26, O12

*Keywords:* Cash Transfers, Financial Training, Gender Roles, Employment

---

\*Jules Gazeaud: J-PAL MENA, The American University in Cairo and CERDI, Université Clermont Auvergne. E-mail: jgazeaud@povertyactionlab.org; Nausheen Khan: World Bank. E-mail: nkhan8@worldbank.org; Eric Mvukiyehé: Duke University. E-mail: eric.mvukiyehé@duke.edu; Olivier Sterck: ODID, University of Oxford and IOB, University of Antwerp. E-mail: olivier.sterck@uantwerpen.be. We thank the editor and the two anonymous referees for their very valuable comments. We thank colleagues and participants at numerous seminars and conferences for helpful feedback and suggestions. We are grateful to Arthur Alik-Lagrange, Diego Angel-Urdinola, Rabah Arezki, Mahdi Barouni, Simone Bertoli, Anush Bezhanyan, Theophile Bougna, Bruno Crepon, Carlo Del Ninno, Laura Derksen, Alison Fahey, Andrew Foster, Ugo Gentilini, Xavier Giné, Alvaro Gonzalez, Afef Haddad, Mary Hallward-Driemeier, Jesko Hentschel, Marcus Holmlund, Jason Kerwin, Elena Lanchovichina, Daniel Lederman, Arianna Legovini, Florian Leon, John Loeser, Fareeba Mahmood, David McKenzie, Lili Mottaghi, Khalid Ahmed Ali Moheydeen, Yuko Okamura, Laura Ralston, Aminur Rahman, Imran Rasul, Emma Riley, Lea Rouanet, Tony Verheijen, Jan von der Goltz, Damien de Walque, Nahla Zeitoun, and numerous seminar participants for their inputs and support at various stages of the research. We thank Sarah Elven, Samih Ferrah, Joe St Clair, and Varada Shrotri for wonderful research assistance. During survey implementation, we were privileged to work with BJKA Consulting, including Samy Kallel (Director General) and an excellent team of enumerators. We are particularly indebted to Samir Ben Zineb for fieldwork coordination. Finally, we express our deepest gratitude to all households that participated to our surveys. This research would have not been possible without their collaboration. We gratefully acknowledge financial support from the World Bank through the Jobs Multi-Donors Trust Fund, the Umbrella Facility for Gender Equality (UFGE), the MNA Gender Innovation Lab (MNAGIL), and the i2i Multi-Donors Trust Fund. Gazeaud acknowledges the support received from the *Agence Nationale de la Recherche* of the French government through the program the program “*Investissements d’avenir*” (ANR-10-LABX-14-01). This impact evaluation study received Institutional Review Board (IRB) clearance from *IRB Solutions*, under protocol #2020/11/17 and was registered on the AEA RCT Registry under registration number AEARCTR-0007136. Computational reproducibility was verified by DIME Analytics.

Should husbands be involved in cash grant and training programs aiming at stimulating women’s income generating activities (IGAs)<sup>1</sup>? Including or excluding husbands should have no impact on outcomes according to the unitary model of the household, which assumes that households have only one set of preferences and that information flows without frictions within the household (Chiappori and Mazzocco 2017). However, recent evidence shows that the unitary model is inconsistent with empirical observations. Spouses have different preferences and are willing to adopt costly strategies to hide their income, savings, or behavior from their partner or to control a greater share of resources (Anderson and Baland 2002; Castilla and Walker 2013; Schaner 2015; Boltz et al. 2019; Castilla 2019; Mani 2020). Information does not flow seamlessly within the household (Nyqvist and Jayachandran 2017; Apedo-Amah et al. 2020; Conlon et al. 2021; Rehman 2023) and spouses behave differently when outcomes or behavior are hidden from their partner (Ashraf 2009; Ashraf et al. 2014; Munro 2018). Furthermore, spouses tend to under-contribute to public goods in experimental games (Hoel 2015) and misallocate inputs within family farms (Udry 1996), leading to inefficient outcomes.

In light of this evidence, excluding husbands from programs aiming at promoting women’s IGAs may increase women’s privacy and agency and lead to different outcomes, especially in contexts where women face a high risk of expropriation by other household members (De Mel et al. 2009; Jakiela and Ozier 2016; Riley 2020) and strong gender norms dictating the roles women can or cannot play (Field et al. 2010; Alesina et al. 2013; Bertrand et al. 2015; Delecourt and Fitzpatrick 2021) . On the other hand, involving men in carefully designed programs might strengthen women’s agency if the intervention can rebalance power, information, or preferences within the household. Previous research in Côte d’Ivoire shows that women participating in gender dialogue groups were less likely to report economic abuse (Gupta et al. 2013). Bursztyn et al. (2020) also show that new information correcting beliefs on gender norms can empower women in labor markets.

We test these two opposite predictions using a randomized controlled trial (RCT) of

---

<sup>1</sup>In this paper, the terms *employment* and *income-generating activities (IGAs)* are used interchangeably and encompass both self-employment and wage-employment. Labor markets include markets for both self-employment and wage-employment.

a cash grant and gender-sensitive training program targeted at women in Tunisia. The RCT had two treatment arms. First, 1,000 women received an unrestricted cash grant worth USD 768 in PPP terms in 2018 (TND 634). This amount is large, about four times the median monthly income of respondents at baseline. These women also received a one-day financial training, which we label as *gender sensitive* because it included specific videos and exercises aiming to stimulate women’s agency. While the cash grant was unrestricted, women were encouraged to invest the money in an IGA or in human capital to enhance their prospects in the labor markets.

The second treatment arm aimed at involving women’s partners in the program to encourage gender dialogue and address some of the gender-specific barriers in the labor markets. A subset of cash grant recipients were encouraged to bring their male partners to the gender-sensitive financial training. The objective of the joint training was to actively engage male partners in the training program, in order to minimize resentment or backlash in response to women’s empowerment and maximize impacts on women’s IGAs.

We study the impacts of the treatments after two years. Results show that the cash grant and training program had positive impacts on women’s likelihood of having an IGA (+3.3 p.p.) and on their income (+60%), but only for women who had to attend the training alone. The involvement of partners in the training appears to have backfired: compared to women who had to attend the training alone, women who could invite their male partner are significantly less likely to have an IGA,<sup>2</sup> they earn lower incomes, and they work fewer hours. We find no significant effects on an index of women’s agency, which suggests that improvements in women’s employment are not enough to empower them. While we find no significant effect on the IGAs of household heads, we find that other members in the households of treated women have more IGAs when the partners were not invited to the training. The cash grants and training program also had significant positive effects on participation in livestock farming (+4.7 p.p.) and small-scale agriculture (+2.5 p.p.), two occupations traditionally undertaken by women at home. This latter result

---

<sup>2</sup>This result is observed for both wage- and self-employment.

does not depend on male partners' participation in the program.

This evidence suggests that husbands' involvement in women's cash grant and training programs can affect how investments are made within households and be detrimental to the promotion of women's IGAs. At least two mechanisms could explain these results. First, men's involvement in the training may reduce women's privacy over the cash grant, giving them less agency to invest the grant in their own activities or that of other household members. Second, men involved in the training may have felt part of the program, giving them more legitimacy to influence how cash grants were spent. Given strong gender norms and the difficulty to hide income in this context, we conjecture that the second explanation is more plausible.

Beyond labor market outcomes, the impacts of the cash grant and training program were overwhelmingly positive, but without significant differences between the two treatment arms. The program had positive effects on household living standards, as measured by food consumption (+10.7%) and asset ownership (+0.13 SD). Women in the treatment groups were also more satisfied with their lives (+0.18 SD), and had better mental health (+0.07 SD), and better access to finance (+0.41 SD). Overall, the program was highly cost-effective: we estimate that its material benefits exceed program costs after only 1.2 years.

Our paper makes three main contributions to the academic literature. First, our finding that partners' involvement in the program backfired highlights the importance of considering intra-household dynamics and spousal information asymmetries (Baland and Ziparo 2018). While most of the studies in this literature have been conducted in the context of lab or lab-in-the-field experiments (Munro 2018), our paper exploits a large-scale RCT of a program providing cash grants and trainings in Tunisia. Our study complements the studies of Bulte et al. (2017, 2018) in Vietnam, which also evaluated a training program targeting women alone versus with their husband. Contrary to our study, their experiment did not include cash grants to relax financial constraints and, while their studies find that inviting male partners had little marginal impact, our experiment shows that involving men may backfire. Second, our study provides addi-

tional evidence that programs including large cash grants can have positive effects and be highly cost-effective, thereby complementing the literature on the impact of large one-off grants in developing economies (see e.g., Haushofer and Shapiro 2016, Crépon et al. 2020, Kondylis et al. 2021). Finally, and more generally, our study relates to the literature on the gender-specific constraints that women face, which limit their participation in labor markets (see Duflo 2012 and Jayachandran 2021 for reviews). The limited and ambiguous results on women’s IGAs call for further research on how to empower women in contexts where strong social norms shape women’s opportunities and labor market outcomes (see e.g., Bertrand et al. 2015, Bursztyn et al. 2020, and Field et al. 2021).

## 1 Context and Interventions

Our experiment was implemented in Jendouba, one of the poorest governorates in Tunisia. The Jendouba governorate is administratively divided into 95 Imadas (localities), 15 of which are classified as urban, and 80 of which are classified as rural. Our RCT targeted 2,000 women in the 80 rural Imadas. These women were recruited from the treatment and control groups of another experiment, which evaluated the impact of a public-works program (The World Bank 2017).<sup>3</sup>

The labor markets in rural Jendouba are highly segregated by gender. Female workers are typically working in agriculture as casual laborers (harvesting, weeding, sowing) (United Nations General Assembly 2013; Zuccotti et al. 2018), or they are involved in small-scale kitchen gardens and livestock farming at home (Massin et al. 2016). By contrast, men tend to work in sectors requiring physical strength, such as construction work. Men are also in charge of specific tasks in agriculture, such as operating machines, transport, and portage. About 18% of households reported owning land at baseline and 49% of households were owning livestock (usually goats or chickens). About half of the women with an IGA at endline reported being self-employed (typically operating small shops or doing home production such as sewing), whereas the other half reported being wage employed or casual workers (mostly working in others’ farms, with a few working

---

<sup>3</sup>See Appendix A for details on this prior program and its impact evaluation.

as cleaning ladies).

Between September 2018 and January 2019, the 2,000 women of our study sample were randomly assigned to one of two treatment arms or to a control group. The design of the experiment is represented in Appendix Figure A.1.

### ***Treatment 1: Cash Grant and Gender-Sensitive Training***

One thousand women were offered a cash grant of TND 634 (USD 768 in PPP terms, USD 240 in nominal terms). This amount is relatively large: about four times the median monthly income of respondents with an IGA at baseline; and enough to purchase two goats.

The cash grants were unrestricted: the money could be spent on anything (Siu et al. 2023). Before receiving the cash grants, women had to participate in a gender-sensitive financial training which aimed at stimulating women’s agency. The one-day training aimed at encouraging women to invest their money productively in physical capital (e.g., starting an IGA) or human capital (e.g., paying for vocational training of their choice). The training covered three main modules: i) financial planning and budgeting, ii) savings, and iii) debt management. Each module included a series of videos, exercises, and guided discussions. Details about the training, including photos and links to the training material, are provided in Appendix A.

Women had to open a bank account or get a pre-paid ATM card to receive the cash grants (see Appendix A for more information). The unrestricted grants were delivered, in one lumpsum, to these accounts. The take-up of the cash grant intervention was very high (95%): 949 out of the 1,000 randomly selected women participated in the training sessions and received the cash grants.

### ***Treatment 2: Joint Training with Male Partners***

Half of the 1,000 women receiving cash grants (i.e., 500 women) were invited to bring their male partners to the financial training described above. Partners were asked to sit next to each other and do the exercises together. The six videos played during the training show two partners discussing, arguing about, and agreeing upon budget management and

investments (see Appendix Figure A.3). The opinions of the women in the video were presented by the trainers as the best practice. Partners were invited to reflect together on the content of the videos and share their joint experience with the group.

The rationale for adding this component was to encourage gender dialogue and joint decision-making between the partners, in order to limit expropriation of grants by male partners and other household members, and mitigate any negative perceptions or resentments that male partners may have as a result of the cash grant program. Previous research by Gupta et al. (2013) in Côte d’Ivoire found that women participating in gender dialogue groups were less likely to report economic abuse.

The take-up rate of the joint training was also high (88%): 444 women attended the training with their partner and 34 women attended the training alone, out of 502 women randomly selected into this treatment group.<sup>4</sup>

## 2 Hypotheses

Our paper tests two series of hypotheses, which are based on our pre-analysis plan (Gazeaud et al. 2021).

The first set of hypotheses is based on the naive assumption that the two treatment arms achieve their intended objectives. Previous research on cash grants to micro-entrepreneurs found positive impacts on a wide variety of business outcomes (De Mel et al. 2008; Fafchamps et al. 2014; McKenzie 2017). Training programs also generate positive impacts, but effect sizes are relatively small (McKenzie 2021). In light of this evidence, we hypothesize that the cash grant and training program relaxes women’s financial and human capital constraints, and that this is sufficient to stimulate women’s IGAs (H1.1) and enhance women’s agency (H1.2). In line with the findings of Gupta et al. (2013), we also hypothesize that the joint training with partners is fostering gender dialogue and empowering women participants (H1.3) which should in turn stimulate their IGAs (H1.4).

---

<sup>4</sup>We find no significant difference in the take-up of the cash grant intervention across the two treatment arms (p-value = 0.66).



The second series of hypotheses recognizes that relaxing financial and human capital constraints may be insufficient because women face gender-specific constraints, including high risk of expropriation by other household members (De Mel et al. 2009; Jakiela and Ozier 2016; Riley 2020). In contrast with Gupta et al. (2013), the joint training might reduce women’s privacy and agency over the grant and affect how the money is invested, inverting H1.3 and H1.4. The cash grants to women could have impacts beyond recipient women and directly impact household IGAs and household well-being (H2.1). The effect of the cash grant and training program on the IGAs of the household head and other household members might depend on partners’ participation in the training (H2.2). The program could also encourage migration if cash grants relax liquidity, credit, and risk constraints to migration (Gazeaud et al. 2023) (H2.3).

### 3 Empirical strategy

#### 3.1 Data

Baseline data were collected between April 2016 and January 2017, which is 12 to 18 months before the distribution of cash grants. The endline survey was conducted between December 2020 and March 2021, which is between 2 and 2.5 years after the distribution of cash grants. Of the female participants, 91.2% were successfully surveyed at endline (N=1,824).<sup>5</sup>

The baseline and endline questionnaires included questions on household composition, economic activities, assets, consumption, women’s agency, subjective well-being, mental health, migration, economic shocks, and coping strategies. Data collection was carried out in person and coordinated by a professional survey firm recruited by the World Bank.

---

<sup>5</sup>At endline, we also sought to interview the male partners of the 1,000 women who received cash grant and training program. We successfully interviewed 83% of these (N=830) and use the data to construct one measure of women’s agency. For male partners, we do not reject the hypothesis that attrition rates are equal in the two treatment groups (17.1% and 16.9% respectively).

### 3.2 Estimation of intent-to-treat effects

We estimate the intent-to-treat (ITT) effect of the cash grant and training program using a regression of the following form:

$$y_{i,t} = \beta_0 + \beta_1 T_i + \delta^T X_{i,t-1} + \mu_e + \varepsilon_{i,t} \quad (1)$$

where  $y_{i,t}$  is the outcome of interest for unit  $i$  at endline  $t$  (where  $i$  is an individual or a household depending on the outcome);  $T_i$  is a dummy indicating whether the unit  $i$  was randomly offered the cash grant and training program;  $X_{i,t-1}$  is a vector of control variables measured at baseline;  $\mu_e$  are enumerator fixed effects; and  $\varepsilon_{i,t}$  is the disturbance term for the regression. The ITT effect of the cash grant and training program is given by the coefficient  $\beta_1$ . The vector of control variables  $X_{i,t-1}$  is selected using the double LASSO method of Chernozhukov et al. (2017).<sup>6</sup>

To test whether the cash grant and training program is more effective when partners are invited to the training, we estimate the following ITT specification:

$$y_{i,t} = \beta_0 + \beta_1 T_{i1} + \beta_2 T_{i2} + \delta^T X_{i,t-1} + \mu_e + \varepsilon_{i,t} \quad (2)$$

where  $T_{i1}$  is a dummy indicating whether the unit  $i$  was randomly offered the cash grant and training program without partners' involvement;  $T_{i2}$  is a dummy indicating whether the unit  $i$  was randomly offered the cash grant and the joint training with male partners; and  $y_{i,t}$ ,  $X_{i,t-1}$ ,  $\mu_e$  and  $\varepsilon_{i,t}$  are defined as above. The ITT effects of the cash grant and training program without and with partners are given by the coefficients  $\beta_1$  and  $\beta_2$  respectively. We then test  $H_0: \beta_1 = \beta_2$  to study the significance of the marginal effect of joint participation into the training.

---

<sup>6</sup> We follow the approach outlined in Derksen et al. (2021) to select variables for the double LASSO procedure. We control for baseline levels of outcome variables when possible (McKenzie 2012). As our impact evaluation builds on the sample of a previous experiment, we control for women's treatment status in that prior experiment in all regressions (see Appendix A for details on this prior cash-for-work program and its impact evaluation). Results are similar without control variables and enumerator fixed effects.

### 3.3 Outcomes

In the main analysis, we consider 37 outcomes of interest, which are classified into five categories.

1. IGAs: To study impacts on female participants, we consider dummy variables identifying whether they had an IGA at the time of the survey and before the COVID-19 pandemic, several measures of income and profit, the number of business employees, and hours worked. We also study various measures of involvement in agriculture and livestock ownership. To study impacts on other household members, we consider whether the household head and other household members have IGAs, and a measure of their income.
2. Women’s empowerment and well-being: We consider two indices of women’s agency (one using data from women and one using data from their male partners) and an index of women’s access to finance. We also consider three subjective measures of current, past, and future life satisfaction, one measure of perceived relative wealth, and a general measure of mental health (the Mental Health Inventory-5, or MHI-5).
3. Household living standards: We study three aggregate measures of consumption (total, food, and non-food consumption), an index of asset ownership, and an index of asset purchases.
4. Shocks and coping strategies: We consider four variables, identifying whether households faced economic shocks or other shocks, and whether they used extreme coping strategies in response to these shocks.
5. Migration: We study a dummy equal to one if the household has moved to a different Imada, a dummy equal to one if at least one household member has migrated since 2019, and a dummy equal to one if at least one household member reported being likely or very likely to migrate to another city or governorate in the next 12 months.

The construction of these outcome variables is detailed in Appendix Table A.1. Descriptive statistics are shown in Appendix Table A.2.

### 3.4 Internal validity

We discuss four threats to the identification of causal impacts: imbalances between the treatment and control groups, spillovers, attrition, and multiple testing.

**Balance** The treatment and control groups are well balanced across a series of baseline demographic and economic characteristics (Appendix Table A.2). For all but one variable analyzed, the magnitude of the differences between the treatment and control groups is smaller than 0.1 standard deviations of the control group, which indicates good balance (Imbens and Rubin 2015, p. 310). Only two out of 75 differences are statistically significant at conventional thresholds. The p-values of omnibus F-tests of joint significance are above 0.90 for both treatment arms.

**Spillovers** Important spillovers between the treatment and control groups are unlikely given the relatively small scale of the program—only 0.3% of the rural population of Jendouba received a cash grant.

**Attrition** Attrition could be an issue in this study, especially since the endline survey took place 4 years after the baseline survey.

The overall attrition rate in our study is 8.8% (Appendix Table A.3), which is relatively low and on par with comparable studies in other developing country contexts. The attrition rate in the control group is 11.2%, which is significantly larger than the attrition rate of 6% and 6.8% observed in the two treatment groups. Differential attrition is mainly driven by higher migration rates in the control group. While the survey firm made its best efforts to track all households—even those that migrated within Tunisia—not all of them could be traced because some households had moved abroad, or because neighbors and community leaders did not know where the households had moved. The attrition differential is in itself an interesting result, which contrasts with the findings of Gazeaud et al. (2023) (more on this in Section 4). However, it could also undermine the internal validity of our analysis. We study whether the baseline characteristics of households are balanced across the control and the treatment groups after dropping attrited observations

(Appendix Table A.4). Reassuringly, we find no evidence of serious imbalance, which suggests that the control group is a credible comparison group even if attrition is slightly higher in this group.

As a robustness check, we implement three methods that aim to address selection bias due to differential attrition.<sup>7</sup> First, we use Inverse Probability Weighting (IPW), using baseline characteristics to estimate respondents' probability to participate in the endline survey, and then using the inverse of these probabilities as weight in the regressions. Second, we follow Lee (2009) and exclude 5% (48 observations) of the treatment group such as to fully close the attrition differential. Following Behaghel et al. (2015), we exclude the most-difficult-to-track respondents in the treatment group by exploiting the fact that respondents that are hard to track are typically interviewed much later than other respondents in the same village.<sup>8</sup> Finally, we follow Kling and Liebman (2004) and estimate treatment effect bounds (KL bounds thereafter) by imputing to the attrited observations the mean outcome of their respective treatment arm plus or minus  $x$  SD. Following Baird et al. (2019), Özler et al. (2021), and Brune et al. (2022), we consider  $x = 0.1$  and  $x = 0.25$ , and recognize that the latter assumption is considered as quite extreme (Blattman et al. 2020; Özler et al. 2021).

Results are overall robust to using IPW, the trimming procedure of Behaghel et al. (2015), and the moderate KL bounds ( $\pm 0.1$  SD). This suggests that attrition is unlikely to drive our conclusions (Appendix Table A.5). Some results, e.g. the estimated impacts on labor market outcomes and agriculture, become less salient with the more extreme KL bounds ( $\pm 0.25$  SD).

**Multiple testing** In the main analysis, we estimate 148 parameters of interest (37 outcomes and four t-tests per outcome). To address multiple testing concerns, we report sharpened  $q$ -values that control the false discovery rate (Anderson 2008). Overall,  $p$ -

---

<sup>7</sup>For these tests, we focus on  $T_i$  as we find no differential attrition between  $T_{i1}$  and  $T_{i2}$ .

<sup>8</sup>Appendix Figure A.4 shows the distribution of interview dates relative to the median interview date in their Imadas. While 82% of interviews were done within 10 days of the median interview date, a series of interviews were done much later, typically because respondents were much more difficult to find and interview. For the treatment group, we trim 5% (48 observations) of the upper tail of this distribution in order to fully close the attrition differential.

values and  $q$ -values are similar, suggesting that our inferences are robust to corrections for multiple testing.

## 4 Results

We study impacts on IGAs in Table 1, on women’s empowerment and well-being in Table 2, and on household living standards, shocks, and migration in Table 3. Results with disaggregated indices are shown in Appendix E.

**IGAs** Results show that the cash grant and training program had a positive effect on female IGAs (H1.1), but only for women who could not invite their male partners to the training. Compared to the control group, women who received the cash grant and the training without their partner were 3.3 percentage points more likely to have an IGA at endline. This effect is larger—3.9 percentage points—if we consider a dummy variable identifying women who had an IGA before the COVID-19 pandemic (in March 2020, i.e. 1.5 years after the intervention).

However, we find no effect on these outcomes if male partners are invited to the training. The gender dialogue intervention seems to have backfired: women who received the cash grant and the joint training with their partner were 4.1 percentage points less likely to have an IGA than women who could participate to the training alone ( $q$ -value = 0.050). The effect is larger—5.7 percentage points—for IGAs before the COVID-19 pandemic ( $q$ -value = 0.017). These effects remain statistically significant if we consider wage- and self-employment separately.<sup>9</sup> Compared to women who had to attend the training alone, women in the joint training treatment group have lower total income ( $q$ -value = 0.027) and work fewer hours on average ( $q$ -value = 0.037).

Overall, the impact of the cash grant and training program on women’s IGAs seems limited and far from being transformative. In fact, one of the most salient results of Table 1 is the very low percentage of women having an IGA in the control group (7.5%).

---

<sup>9</sup>In contrast to Bauchet et al. (2015) and Bandiera et al. (2017), we find no clear evidence of substitution effect between different types of IGAs for women in the two treatment groups.

The effect on the IGAs of household heads is positive but too small to be statistically significant at conventional levels, even in the joint training arm. However, we find evidence that the cash grants were used to promote the IGAs of other household members (H2.1). The cash grant and training program significantly increased the number of other household members with an IGA (+28%), especially when the partner was not involved in the program (+49%), which is consistent with H2.2. This suggests that women might be able to optimally invest in the activities of other household members, provided their partners are not involved in the training.<sup>10</sup>

The effect of participation in the cash grant and training program on total household income is positive, with no significant difference between the two treatment groups. While women’s income is significantly higher when they are invited to participate in the training alone, the income of household heads is higher with the joint training (this latter effect is not statistically significant at conventional level). The two effects partly balance each other out. This suggests that participating in the training alone versus the joint training generates some substitution effect between women’s and men’s IGAs, which we only imperfectly capture for men’s IGAs (perhaps because the data on men’s IGAs are collected from women).

These results suggest that women had more leeway to invest the grant in their own IGAs – be it wage- or self-employment – if their partner was not involved in the training. Men’s involvement may have reduced women’s privacy over the cash grant.<sup>11</sup> Men involved in the training sessions may have also felt more part of the program, giving them more legitimacy to influence how cash grants were spent. Due to data limitations, we are unable to test these mechanisms. However, given strong gender norms and the difficulty for women to hide income in this context, we conjecture that the second explanation is more plausible. This interpretation is in line with the model of Lowe and McKelway (2021), which assumes that intra-household decision rights are not clearly delineated,

---

<sup>10</sup>We only collected data on hours worked for women participants.

<sup>11</sup>Another version of this mechanism is that women attending the training alone may have been able to describe the requirements of the cash grants to their partners in a way that would favor their activities (e.g., presenting the transfers as conditional on investments in their own business or in a female-operated business).

and that interventions that make household decision-making more joint can give “veto power” to the spouse. Our findings are also consistent with a model with information asymmetries in the couple, in which the household can either invest in an IGA with returns known to the men, or invest in the woman’s IGA, but only her knows the expected returns. If the husband is involved in the training, he chooses to invest in the activity with known returns. If the husband is not involved, she selects the best investment opportunity. Formally testing the relevance of these mechanisms is a fruitful area for future research.

The effects of the cash grant and training program on agricultural and livestock farming—two activities traditionally done by women—are salient (H1.1).<sup>12</sup> Households that received the cash grant and training program are 2.5 percentage points (+40%) more likely to report agriculture as an IGA. While we find some evidence of change in agricultural practices, agricultural techniques remain traditional, with almost no use of fertilizers and pesticide. Agriculture is mostly small-scale: for households reporting an agricultural IGA, the average production in the 2019 agricultural season was 61kg, and the value of the production was TND 192 (USD 219 in PPP terms). Households who own land have an average area of 0.85 hectares. The impacts on the quantity and value of agricultural production are positive and highly significant.

Households that received a cash grant are also 4.7 percentage points (+25%) more likely to report livestock farming as an IGA. Households in the treatment groups have more goats, and are significantly more likely to have purchased goats, chickens, and mules since January 2019 (Appendix Table A.7). The joint participation into the training had no significant marginal effect on agriculture and livestock farming.

**Women’s empowerment and well-being** We find no significant effect on an index of women’s agency. Coefficients are negative but insignificant at conventional levels. We assess impacts on each of the 16 questions used to construct the women’s agency index

---

<sup>12</sup>We note that only 19% of households in the control group reported agriculture or livestock as an IGA. Many more households have a few animals or cultivate a small plot of land but do not consider their involvement in subsistence agriculture as an IGA. For example, 39% of households in the control group have goats and 53% of households have chickens.



in Appendix Table A.8. A first set of 11 questions captures whether women are involved in decision-making related to household finances (e.g., expenditure on food, livestock, or land). A large majority of women report being involved in these decisions, even in the control group, suggesting that the margin for improvement is limited. The five other questions examine whether women have agency to take personal decisions related to personal purchases, occupation, and social participation. A majority of women do not take these personal decisions alone, regardless of their treatment status. Estimated effects are insignificant for all but one of the 16 questions and the only significant coefficient is small and negative. Overall, these results suggest that hypotheses H1.2 and H1.3 are not verified: the interventions did not affect women’s agency. Consequently, hypotheses H1.4 is irrelevant in our context. These results also suggest that the mechanism through which partners’ involvement in the training backfired is not related to a persistent negative effect of the joint training on women’s agency.

We find strong evidence that the cash grant and training program improved women’s access to finance. The treatment effect on a standardized index is 0.41 standard deviations. Women in the treatment group are not only more likely to have a bank account (which was a requirement to get the cash grant), they also have higher levels of savings, borrowed money, and repaid their debt (Appendix Table A.9).

Women who received the cash grant and training program also report higher life satisfaction. The positive effect is identified not only for current life satisfaction (+0.18 SD), but also for life satisfaction one year before the endline survey (+0.16 SD), and expected life satisfaction three years after the survey (+0.10 SD). It is worth noting that self-reported life satisfaction is very low: only 2.4 on average in the control group on a Cantrill’s ladder ranging from 1 to 10. The recipients of the cash grant and training program characterize their relative wealth as higher than that of other households of their community (+0.15 SD). The impacts on women’s agency, access to finance, and well-being, are similar in the two treatment arms, suggesting that partners’ involvement in the training had no marginal effect on these outcomes.

We also find a positive and significant effect of the cash grants on women’s mental

health, as measured using the MHI-5 scale (+0.07 SD). We find suggestive evidence that this positive impact is mainly driven by women who attended the training alone, but the difference between the two treatment arms is statistically insignificant at conventional levels.

**Household living standards, shocks, and migration** The cash grant and training intervention had a positive impact on living standards (H2.1). The effect on total consumption per capita is positive and statistically significant (+7.6%). The positive effect on consumption is largely driven by the positive effect on food consumption per capita (+10.7%).

Households that received the cash grants also have more assets. The estimated effect on an asset index is +0.13 SD. Positive effects are observed on a wide range of assets, including ownership of motorcycles, televisions, generators, ventilators, tables, mattresses, and the number of rooms in the house (Appendix Table A.10).<sup>13</sup> The effects on measures of living standards are very similar in the two treatment arms, suggesting that partners' involvement in the training had no marginal effect on living standards.

These effects on women's well-being and mental health and on household consumption and assets are broadly consistent with the effects on total household income. In general, effects are positive and the magnitudes of impacts are higher when women are invited to the training alone, but the differences between the two treatment arms are not statistically significant.

The recipients of cash grants are 2.5 percentage points more likely to report having suffered from an economic shock in the two years preceding the survey (job loss, bad business, or loss of livelihood). This effect is quite large (+156%) given that this type of negative shock is extremely rare in the control group. This result suggests that some women used part of the grant to invest in an IGA, but these activities did not survive until the endline survey. We also find suggestive evidence that the grants help households

---

<sup>13</sup>We find no effect on the variable "Asset index (bought since 2019)". Two main reasons may explain this discrepancy. First, the cash grant was delivered between September 2018 and January 2019, implying that asset purchases done immediately after receiving the cash might be excluded from this variable. Second, recall issues leading to attenuation bias are more likely with this variable, because respondents might not accurately remember when they bought the assets.

cope with shocks without having to take extreme decisions such as skipping meals or taking children out of school.

Finally, we find that households in the treatment groups are 3 percentage points less likely to have moved to a different Imada at endline (H2.3). This result suggests that the opportunity cost of migrating may have increased thanks to the cash grants and the better livelihood opportunities and higher living standards that resulted from the program. We also examine a variable indicating whether some household members had left their household and migrated individually since January 2019, that is, about two years before the endline survey. We find small and non-significant effects. However, the program positively impacted migration intentions.

**Cost-benefit analysis** We use two approaches to assess the cost-effectiveness of the cash grant and training program (Appendix Table A.6). First, we follow Banerjee et al. (2015) and compare the cost of the program with the net present value of the ITT on consumption and assets, assuming that effects on consumption are permanent. Using a social discount rate of 5%, we find that the material benefits of the cash grant and training program are 17 times higher than its cost. While the confidence interval is large [2.5 – 31.3], we note that even its lower bound is above 1.

Recognizing that the approach of Banerjee et al. (2015) is based on a rather optimistic assumption – that the ITT effect on consumption is permanent – we also estimate how long the ITT effect on consumption should last to fully cover the program costs. We find that only 1.2 years of benefits are needed to obtain a positive benefit-cost ratio, which shows that the program is highly cost-effective, even in the short-run.

## 5 Conclusion

Our study assessed the potential of a program of capital injections and gender-sensitive financial training to empower women and address gender-specific barriers in the labor markets.

Our results are mixed. On the one hand, we find that households as a whole massively

benefited from the cash grant and gender-sensitive training program, which is consistent with the literature on the impact of large one-off grants in developing economies (see e.g., Haushofer and Shapiro 2016, Crépon et al. 2020, Kondylis et al. 2021). We identified positive effects on a broad range of outcomes, including food consumption, asset ownership, investments in agriculture and livestock farming, and employment of other household members. We also find that women in the treatment groups are more satisfied with their lives, have better mental health, and have greater access to finance. Our estimates suggest that the program is highly cost-effective. These results demonstrate the potential of cash transfer and training programs to stimulate economic activity and reduce household poverty.

On the other hand, the program had only limited impacts on women’s employment and no impact on women’s agency. Involving male partners in the training backfired and reduced women’s participation in IGAs, women’s income, and women’s hours worked. This latter result contrasts with the findings of Bulte et al. (2017, 2018), who found limited marginal impact of involving men in a business training program. Further research is needed to explore both the theoretical underpinnings driving this effect, and how generalizable the effect may be.

Overall, our paper confirms the importance of redistribution mechanisms within households (Bernhardt et al. 2019). Our study also highlights the difficulty of challenging gender roles and stimulating women’s employment in traditional societies, and that attempting to do so can backfire. This highlights the need to carefully develop and test unproven interventions that directly target gender norms.

## References

- Abadie, A., Chingos, M. M., and West, M. R. (2018). Endogenous stratification in randomized experiments. *Review of Economics and Statistics*, 100(4):567–580.
- Alesina, A., Giuliano, P., and Nunn, N. (2013). On the origins of gender roles: Women and the plough. *The Quarterly Journal of Economics*, 128(2):469–530.
- Anderson, M. L. (2008). Multiple inference and gender differences in the effects of early intervention: A reevaluation of the abecedarian, perry preschool, and early training projects. *Journal of the American Statistical Association*, 103(484):1481–1495.
- Anderson, S. and Baland, J.-M. (2002). The economics of ROSCAs and intrahousehold resource allocation. *The quarterly journal of economics*, 117(3):963–995.
- Apedo-Amah, M., Djebbari, H., and Ziparo, R. (2020). Gender, information and the efficiency of household production decisions: An experiment in rural Togo. *IZA Discussion Paper*.
- Ashraf, N. (2009). Spousal control and intra-household decision making: An experimental study in the philippines. *American Economic Review*, 99(4):1245–77.
- Ashraf, N., Field, E., and Lee, J. (2014). Household bargaining and excess fertility: an experimental study in zambia. *American Economic Review*, 104(7):2210–37.
- Baird, S., McIntosh, C., and Özler, B. (2019). When the money runs out: Do cash transfers have sustained effects on human capital accumulation? *Journal of Development Economics*, 140:169–185.
- Baland, J.-M. and Ziparo, R. (2018). Intra-household bargaining in poor countries. *Towards gender equity in development*, 69(1).
- Bandiera, O., Burgess, R., Das, N., Gulesci, S., Rasul, I., and Sulaiman, M. (2017). Labor markets and poverty in village economies. *The Quarterly Journal of Economics*, 132(2):811–870.
- Banerjee, A., Duflo, E., Goldberg, N., Karlan, D., Osei, R., Parienté, W., Shapiro, J., Thuysbaert, B., and Udry, C. (2015). A multifaceted program causes lasting progress for the very poor: Evidence from six countries. *Science*, 348(6236).
- Bauchet, J., Morduch, J., and Ravi, S. (2015). Failure vs. displacement: Why an innovative anti-poverty program showed no net impact in South India. *Journal of Development Economics*, 116:1–16.

- Behaghel, L., Crépon, B., Gurgand, M., and Le Barbanchon, T. (2015). Please call again: Correcting nonresponse bias in treatment effect models. *Review of Economics and Statistics*, 97(5):1070–1080.
- Bernhardt, A., Field, E., Pande, R., and Rigol, N. (2019). Household matters: Revisiting the returns to capital among female microentrepreneurs. *American Economic Review: Insights*, 1(2):141–60.
- Bertrand, M., Kamenica, E., and Pan, J. (2015). Gender identity and relative income within households. *The Quarterly Journal of Economics*, 130(2):571–614.
- Blattman, C., Fiala, N., and Martinez, S. (2020). The long-term impacts of grants on poverty: Nine-year evidence from Uganda’s youth opportunities program. *American Economic Review: Insights*, 2(3):287–304.
- Boltz, M., Marazyan, K., and Villar, P. (2019). Income hiding and informal redistribution: A lab-in-the-field experiment in Senegal. *Journal of Development Economics*, 137:78–92.
- Brune, L., Karlan, D., Kurdi, S., and Udry, C. (2022). Social protection amidst social upheaval: Examining the impact of a multi-faceted program for ultra-poor households in yemen. *Journal of Development Economics*, 155:102780.
- Bulte, E., Lensink, R., and Vu, N. (2017). Do gender and business trainings affect business outcomes? experimental evidence from Vietnam. *Management Science*, 63(9):2885–2902.
- Bulte, E. H., Lensink, R., and Winkel, A. B. (2018). The impact of a gender and business training on income hiding: An experimental study in Vietnam. *Journal of Economic Behavior & Organization*, 148:241–259.
- Bursztyn, L., González, A. L., and Yanagizawa-Drott, D. (2020). Misperceived social norms: Women working outside the home in Saudi Arabia. *American Economic Review*, 110(10):2997–3029.
- Castilla, C. (2019). What’s yours is mine, and what’s mine is mine: Field experiment on income concealing between spouses in India. *Journal of Development Economics*, 137:125–140.
- Castilla, C. and Walker, T. (2013). Is ignorance bliss? The effect of asymmetric information between spouses on intra-household allocations. *American Economic Review*, 103(3):263–268.

- Chernozhukov, V., Chetverikov, D., Demirer, M., Duflo, E., Hansen, C., and Newey, W. (2017). Double/debiased/neyman machine learning of treatment effects. *American Economic Review*, 107(5):261–65.
- Chiappori, P.-A. and Mazzocco, M. (2017). Static and intertemporal household decisions. *Journal of Economic Literature*, 55(3):985–1045.
- Conlon, J. J., Mani, M., Rao, G., Ridley, M. W., and Schilbach, F. (2021). Learning in the household. *National Bureau of Economic Research No. w28844*.
- Crépon, B., El Komi, M., and Osman, A. (2020). Is it who you are or what you get? comparing the impacts of loans and grants for microenterprise development. *Unpublished Working Paper*.
- De Mel, S., McKenzie, D., and Woodruff, C. (2009). Are women more credit constrained? experimental evidence on gender and microenterprise returns. *American Economic Journal: Applied Economics*, 1(3):1–32.
- De Mel, S., McKenzie, D. J., and Woodruff, C. (2008). Returns to Capital in Microenterprises: Evidence from a Field Experiment. *Quarterly Journal of Economics*, 123(4):1329–1372.
- Delecourt, S. and Fitzpatrick, A. (2021). Childcare matters: Female business owners and the baby-profit gap. *Management Science*.
- Derksen, L., Kerwin, J., Reynoso, N. O., and Sterck, O. (2021). Appointments: A more effective commitment device for health behaviors. *arXiv preprint arXiv:2110.06876*.
- Duflo, E. (2012). Women empowerment and economic development. *Journal of Economic Literature*, 50(4):1051–79.
- Fafchamps, M., McKenzie, D. J., Quinn, S., and Woodruff, C. (2014). Microenterprise Growth and the Flypaper Effect: Evidence from a Randomized Experiment in Ghana. *Journal of Development Economics*, 106:211–226.
- Field, E., Jayachandran, S., and Pande, R. (2010). Do traditional institutions constrain female entrepreneurship? A field experiment on business training in India. *American Economic Review*, 100(2):125–29.
- Field, E., Pande, R., Rigol, N., Schaner, S., and Moore, C. T. (2021). On her own account: How strengthening women’s financial control impacts labor supply and gender norms. *American Economic Review*, 111(7):2342–75.

- Gazeaud, J., Mvukiyehe, E., and Sterck, O. (2021). Enhancing female entrepreneurship through cash grants: Evidence from a randomized controlled trial in Tunisia. *AEA RCT Registry*.
- Gazeaud, J., Mvukiyehe, E., and Sterck, O. (2023). Cash transfers and migration: Theory and evidence from a randomized controlled trial. *Review of Economics and Statistics*, 105(1):143–157.
- Gupta, J., Falb, K. L., Lehmann, H., Kpebo, D., Xuan, Z., Hossain, M., Zimmerman, C., Watts, C., and Annan, J. (2013). Gender norms and economic empowerment intervention to reduce intimate partner violence against women in rural Côte d’Ivoire: a randomized controlled pilot study. *BMC international health and human rights*, 13(1):1–12.
- Haushofer, J. and Shapiro, J. (2016). The Short-term Impact of Unconditional Cash Transfers to the Poor: Experimental Evidence from Kenya. *The Quarterly Journal of Economics*, 131:1973–2042.
- Hoel, J. B. (2015). Heterogeneous households: A within-subject test of asymmetric information between spouses in Kenya. *Journal of economic behavior & organization*, 118:123–135.
- Imbens, G. W. and Rubin, D. B. (2015). *Causal inference in statistics, social, and biomedical sciences*. Cambridge University Press.
- Jakiela, P. and Ozier, O. (2016). Does Africa need a rotten kin theorem? Experimental evidence from village economies. *The Review of Economic Studies*, 83(1):231–268.
- Jayachandran, S. (2021). Social norms as a barrier to women’s employment in developing countries. *IMF Economic Review*, pages 1–20.
- Kling, J. R. and Liebman, J. B. (2004). Experimental analysis of neighborhood effects on youth. *SSRN working paper 600596*.
- Kondylis, F., Loeser, J. A., et al. (2021). Intervention size and persistence. *The World Bank Policy Research Working Papers No. 9769*.
- Lee, D. S. (2009). Training, wages, and sample selection: Estimating sharp bounds on treatment effects. *The Review of Economic Studies*, 76(3):1071–1102.
- Lowe, M. and McKelway, M. (2021). Coupling labor supply decisions: An experiment in india. *Available at SSRN 3979351*.
- Mani, A. (2020). Mine, yours or ours? the efficiency of household investment decisions: An experimental approach. *The World Bank Economic Review*, 34(3):575–596.



- Massin, P., Ferchichi, A., Kharrat, M., Farhat, N., and Guenther, N. (2016). Référentiel du développement agricole durable en Tunisie. *Ministère de l’Agriculture, des Ressources Hydrauliques et de la Pêche et Agence de la Vulgarisation et de la Formation Agricoles (AVFA)*.
- McKenzie, D. (2012). Beyond baseline and follow-up: The case for more t in experiments. *Journal of development Economics*, 99(2):210–221.
- McKenzie, D. (2021). Small business training to improve management practices in developing countries: re-assessing the evidence for ‘training doesn’t work’. *Oxford Review of Economic Policy*, 37(2):276–301.
- McKenzie, D. J. (2017). Identifying and Spurring High-Growth Entrepreneurship: Experimental Evidence from a Business Plan Competition. *American Economic Review*, 107(8):2278–2307.
- Munro, A. (2018). Intra-household experiments: A survey. *Journal of Economic Surveys*, 32(1):134–175.
- Nyqvist, M. B. and Jayachandran, S. (2017). Mothers care more, but fathers decide: Educating parents about child health in Uganda. *American Economic Review*, 107(5):496–500.
- Özler, B., Çelik, Ç., Cunningham, S., Cuevas, P. F., and Parisotto, L. (2021). Children on the move: Progressive redistribution of humanitarian cash transfers among refugees. *Journal of Development Economics*, 153:102733.
- Rehman, O. U. (2023). Spousal communication and information sharing: Evidence from migrants and their spouses. *Journal of Development Economics*, page 103148.
- Riley, E. (2020). Resisting social pressure in the household using mobile money: Experimental evidence on microenterprise investment in Uganda. *Working Paper*.
- Schaner, S. (2015). Do opposites detract? Intrahousehold preference heterogeneity and inefficient strategic savings. *American Economic Journal: Applied Economics*, 7(2):135–174.
- Siu, J., Sterck, O., and Rodgers, C. (2023). The freedom to choose: Theory and quasi-experimental evidence on cash transfer restrictions. *Journal of Development Economics*, 161:103027.
- The World Bank (2017). *Public Works and Welfare: A Randomized Control Trial of the Community Works and Local Participation Project in Rural Tunisia*. The World Bank: Endline Report.

- Udry, C. (1996). Gender, agricultural production, and the theory of the household. *Journal of Political Economy*, 104(5):1010–1046.
- United Nations General Assembly (2013). Report of the Working Group on the issue of discrimination against women in law and in practice. *Human Rights Council Twenty-third session Agenda item 3A/HRC/23/50/Add.2*.
- Zuccotti, C. V., Geddes, A. P., Bacchi, A., Nori, M., and Stojanov, R. (2018). Rural migration in Tunisia. Drivers and patterns of rural youth migration and its impact on food security and rural livelihoods in Tunisia. *Food and Agriculture Organization of the United Nations*.

Table 1 – Treatment effects on income generating activities (IGAs)

			Eq (1)	Eq (2)		(7) N	
	(1) Control Mean	(2) Control SD	(3) Treatment	(4) T1: Cash & Training Alone	(5) T2: Cash & Joint Training		(6) p-value T1 = T2
<b>Women's IGAs</b>							
Has an IGA <sup>†</sup>	0.075	0.264	0.013 (0.012) [0.340]	0.033** (0.016) [0.072]	-0.008 (0.013) [0.617]	0.017 [0.050]	1,824
Had an IGA before COVID	0.091	0.288	0.011 (0.013) [0.483]	0.039** (0.017) [0.059]	-0.018 (0.014) [0.285]	0.002 [0.017]	1,824
Business profit (in Dinars) <sup>†</sup>	9.505	66.500	0.358 (2.860) [0.748]	3.033 (3.905) [0.508]	-2.337 (2.985) [0.508]	0.175 [0.243]	1,824
Business employees <sup>†</sup>	0.010	0.271	0.003 (0.012) [0.731]	0.000 (0.011) [0.776]	0.005 (0.017) [0.716]	0.769 [0.716]	1,824
Total income (in Dinars) <sup>†</sup>	35.893	149.039	7.932 (6.866) [0.302]	21.637** (9.691) [0.059]	-5.885 (6.993) [0.483]	0.006 [0.027]	1,824
Total hours worked (last 7 days) <sup>†</sup>	2.785	10.130	-0.118 (0.433) [0.726]	0.659 (0.574) [0.302]	-0.841* (0.457) [0.106]	0.009 [0.037]	1,824
<b>IGAs of other household members</b>							
Household head has an IGA	0.341	0.474	0.025 (0.020) [0.285]	0.021 (0.025) [0.483]	0.029 (0.025) [0.302]	0.796 [0.726]	1,824
Number of other HH members with an IGA	0.140	0.400	0.039* (0.020) [0.095]	0.069** (0.028) [0.045]	0.008 (0.022) [0.716]	0.043 [0.082]	1,824
Household head income (in Dinars)	133.822	230.264	9.389 (10.103) [0.440]	3.771 (12.148) [0.716]	15.040 (12.447) [0.289]	0.422 [0.508]	1,824
Other HH members income (in Dinars)	64.950	198.728	6.671 (8.672) [0.508]	11.155 (10.818) [0.360]	2.133 (10.417) [0.731]	0.462 [0.536]	1,824
<b>Agriculture</b>							
Household has an agricultural IGA	0.062	0.241	0.025** (0.011) [0.059]	0.027* (0.014) [0.092]	0.022* (0.013) [0.127]	0.745 [0.716]	1,824
Used chemicals	0.018	0.156	0.021** (0.009) [0.059]	0.019* (0.011) [0.130]	0.023* (0.013) [0.100]	0.742 [0.716]	1,824
Quantity produced (in Kg)	1.666	20.371	6.077*** (1.859) [0.012]	7.115*** (2.639) [0.031]	5.032** (2.259) [0.059]	0.517 [0.582]	1,824
Value of the production (in Dinars)	8.736	76.197	12.383*** (4.604) [0.031]	15.454** (6.305) [0.045]	9.289* (5.402) [0.128]	0.398 [0.483]	1,824
<b>Livestock</b>							
HH has a livestock IGA <sup>†</sup>	0.187	0.390	0.047*** (0.016) [0.019]	0.047** (0.020) [0.050]	0.047** (0.019) [0.045]	0.989 [0.776]	1,824
Total stock (in Dinars) <sup>†</sup>	463.197	656.976	38.218 (29.484) [0.264]	38.743 (36.050) [0.340]	37.688 (36.017) [0.354]	0.980 [0.776]	1,824
Bought since January 2019 (in Dinars)	32.235	196.140	29.751*** (9.275) [0.013]	24.685** (10.868) [0.059]	34.855*** (11.775) [0.019]	0.435 [0.508]	1,824

Notes: This table reports the intent-to-treat effects of the interventions on women's IGAs, other household members' IGAs, agriculture, and livestock. Columns 1 and 2 report the mean and standard deviation of the outcome variables in the control group. Column 3 reports the effect of the cash grant and training program ( $\beta_1$  in Equation 1). Columns 4 and 5 report the effect of the cash grant and training program with and without the male partner ( $\beta_1$  and  $\beta_2$  in Equation 2). Column 6 reports the p-value for the null hypothesis that the effect of the cash grant and training program is the same with and without the male partner ( $\beta_1 = \beta_2$  in Equation 2). Outcomes denoted with <sup>†</sup> are available at baseline and used as control. Regressions also include enumerator fixed effects and a vector of control variables selected using the double LASSO method of Chernozhukov et al. (2017). As our impact evaluation builds on the sample of a previous experiment, we control for women's treatment status in that prior experiment in all regressions. Robust standard errors are reported in parentheses. FDR q-values are reported in brackets. \*\*\* p<0.01, \*\* p<0.05, \* p<0.1.

Table 2 – Treatment effects on women’s empowerment and well-being

	(1) Control Mean	(2) Control SD	Eq (1)		Eq (2)		(7) N
			(3) Treatment	(4) T1: Cash & Training Alone	(5) T2: Cash & Joint Training	(6) p-value T1 = T2	
<b>Women’s empowerment</b>							
Women’s agency index	-0.000	1.000	-0.044 (0.038) [0.302]	-0.033 (0.046) [0.549]	-0.056 (0.046) [0.285]	0.646 [0.657]	1,824
Partners’ views index	-0.001	0.999	.	.	-0.030 (0.054) [0.617]	.	830
<b>Women’s financial index</b>	0.000	1.000	0.408*** (0.087) [0.001]	0.408*** (0.133) [0.018]	0.408*** (0.088) [0.001]	0.998 [0.776]	1,824
<b>Women’s wellbeing</b>							
<i>Cantrill’s ladder</i>							
Current life satisfaction	2.356	1.470	0.269*** (0.062) [0.001]	0.276*** (0.075) [0.007]	0.261*** (0.078) [0.011]	0.867 [0.746]	1,824
Life satisfaction one year ago	2.411	1.494	0.239*** (0.060) [0.003]	0.268*** (0.075) [0.008]	0.209*** (0.073) [0.023]	0.508 [0.576]	1,824
Predicted life satisfaction in three years	3.411	2.125	0.221*** (0.081) [0.029]	0.255*** (0.098) [0.037]	0.187* (0.099) [0.098]	0.544 [0.590]	1,824
Relative wealth	2.821	1.656	0.244*** (0.067) [0.007]	0.269*** (0.083) [0.012]	0.218*** (0.082) [0.033]	0.588 [0.622]	1,824
Mental health (MHI-5 score)	43.154	19.500	1.405* (0.783) [0.115]	2.119** (0.940) [0.059]	0.686 (0.952) [0.545]	0.178 [0.243]	1,824

Notes: This table reports the intent-to-treat effects of the interventions on women’s empowerment and well-being. Columns 1 and 2 report the mean and standard deviation of the outcome variables in the control group. Column 3 reports the effect of the cash grant and training program ( $\beta_1$  in Equation 1). Columns 4 and 5 report the effect of the cash grant and training program with and without the male partner ( $\beta_1$  and  $\beta_2$  in Equation 2). Column 6 reports the p-value for the null hypothesis that the effect of the cash grant and training program is the same with and without the male partner ( $\beta_1 = \beta_2$  in Equation 2). *Women’s agency index*: index constructed from the answers of the woman to 16 questions about her role in the decision-making of personal and household decisions (standardized average). *Partner views index*: index constructed from the answers of the partner to 73 questions on women’s agency, spouses communication, and his perceptions of gender roles, women abilities for economic activities, gender-based violence, reproductive health, and women autonomy (standardized average). *Woman financial index*: standardized average of nine questions on woman financial access and financial situation. *Cantrill’s ladder* ranges from 1 to 10 (where 10 is the top of the ladder). *Mental health*: the MHI-5 score is based on responses across five categories (happiness, peacefulness, nervousness, downheartedness, depression) with higher values indicating better mental health (0-100 point scale). Outcomes denoted with † are available at baseline and used as control. Regressions also include enumerator fixed effects and a vector of control variables selected using the double LASSO method of Chernozhukov et al. (2017). As our impact evaluation builds on the sample of a previous experiment, we control for women’s treatment status in that prior experiment in all regressions. Robust standard errors are reported in parentheses. FDR q-values are reported in brackets. \*\*\*  $p < 0.01$ , \*\*  $p < 0.05$ , \*  $p < 0.1$ .

Table 3 – Treatment effects on living standards, shocks, and migration

	(1) Control Mean	(2) Control SD	Eq (1)		Eq (2)		(7) N
			(3) Treatment	(4) T1: Cash & Training Alone	(5) T2: Cash & Joint Training	(6) p-value T1 = T2	
<b>Household living standards</b>							
Total consumption per capita (in Dinars per day) <sup>†</sup>	8.428	6.472	0.638** (0.266) [0.050]	0.745** (0.335) [0.059]	0.544* (0.321) [0.130]	0.601 [0.627]	1,824
Food consumption per capita (in Dinars per day) <sup>†</sup>	3.582	3.004	0.385*** (0.116) [0.011]	0.420*** (0.144) [0.020]	0.349** (0.140) [0.045]	0.666 [0.667]	1,824
Non-food consumption per capita (in Dinars per day) <sup>†</sup>	3.757	2.750	0.080 (0.120) [0.576]	0.080 (0.149) [0.622]	0.080 (0.144) [0.617]	1.000 [0.776]	1,824
Asset index (stock) <sup>†</sup>	0.000	1.000	0.126*** (0.038) [0.011]	0.148*** (0.049) [0.018]	0.105** (0.043) [0.047]	0.425 [0.508]	1,824
Asset index (bought since 2019)	-0.000	1.000	0.009 (0.042) [0.731]	0.026 (0.052) [0.632]	-0.009 (0.049) [0.746]	0.539 [0.590]	1,824
<b>Shocks and coping mechanisms</b>							
Economic shock <sup>†</sup>	0.016	0.125	0.025*** (0.007) [0.011]	0.020** (0.009) [0.059]	0.030*** (0.010) [0.019]	0.401 [0.483]	1,824
Other shock <sup>†</sup>	0.250	0.433	-0.002 (0.019) [0.768]	-0.019 (0.022) [0.483]	0.016 (0.023) [0.576]	0.189 [0.258]	1,824
Extreme coping strategy <sup>†</sup>	0.123	0.328	-0.028** (0.013) [0.060]	-0.018 (0.015) [0.294]	-0.038** (0.015) [0.045]	0.236 [0.295]	1,824
Other coping strategy <sup>†</sup>	0.152	0.359	0.009 (0.015) [0.616]	-0.023 (0.018) [0.270]	0.041** (0.020) [0.082]	0.005 [0.023]	1,824
<b>Migration</b>							
Household migration (since baseline)	0.094	0.295	-0.030** (0.012) [0.045]	-0.030** (0.014) [0.075]	-0.029** (0.014) [0.082]	0.953 [0.776]	2,000
Individual migration (since 2019) <sup>†</sup>	0.190	0.393	0.002 (0.018) [0.748]	-0.001 (0.022) [0.776]	0.006 (0.022) [0.726]	0.797 [0.726]	1,824
Expected likelihood of future migration	0.054	0.226	0.033*** (0.011) [0.018]	0.016 (0.012) [0.272]	0.050*** (0.014) [0.008]	0.033 [0.069]	1,824

Notes: This table reports the intent-to-treat effects of the interventions on household living standards, shocks, and migration. Columns 1 and 2 report the mean and standard deviation of the outcome variables in the control group. Column 3 reports the effect of the cash grant and training program ( $\beta_1$  in Equation 1). Columns 4 and 5 report the effect of the cash grant and training program with and without the male partner ( $\beta_1$  and  $\beta_2$  in Equation 2). Column 6 reports the p-value for the null hypothesis that the effect of the cash grant and training program is the same with and without the male partner ( $\beta_1 = \beta_2$  in Equation 2). *Asset index*: standardized index using the method of Filmer and Pritchett (2001) on a set of 21 assets. *Economic shocks*: dummy equal to one in case of job loss, failed business or loss of livelihood in the last 24 months. *Other shocks*: dummy equal to one in case of death/disease of a household member or theft in the last 24 months. *Extreme coping strategy*: dummy equal to one if the household reduced the number of meals, took children out of school or fostered children to friends to face a shock. *Other coping strategy*: dummy equal to one if the household took debts, received help, sold assets, or used savings to face a shock. *Household migration*: dummy equal to one if the household has moved to a different imada (value of one is imputed for attrited households who could not be surveyed because they migrated). *Individual migration*: dummy equal to one if at least one household member has migrated since 2019. *Expected likelihood of future migration*: dummy equal to one if at least one household member is likely or very likely to migrate to another city or governorate in the next 12 months. Outcomes denoted with <sup>†</sup> are available at baseline and used as control. Regressions also include enumerator fixed effects and a vector of control variables selected using the double LASSO method of Chernozhukov et al. (2017). As our impact evaluation builds on the sample of a previous experiment, we control for women’s treatment status in that prior experiment in all regressions. For individual migration (since 2019), the equivalent variable in the baseline is “individual migration (since 2015)”. Robust standard errors are reported in parentheses. FDR q-values are reported in brackets. \*\*\* p<0.01, \*\* p<0.05, \* p<0.1.

# Online Appendix

## A Interventions and Design

**CWLP program** Between 2012 and 2016, 40 rural Imadas took part in a project of Community Works and Local Participation (CWLP) implemented by the Ministry of Vocational Training and Employment (MFPE) with the technical support of the World Bank (The World Bank 2017). The CWLP program was implemented as a cluster RCT: 40 Imadas were randomly selected to benefit from public works and 40 Imadas were placed in a pure control group. In treatment Imadas, 35 households were randomly selected to participate in the cash-for-work program and 15 households were chosen as control. Our baseline data are the endline data of the CWLP evaluation. We built our impact evaluation on the CWLP evaluation for three reasons: facilitate sampling, minimize costs, and allow for the evaluation of the long-term effects of the CWLP. Our interventions were cross-randomized without stratifying by the CWLP treatment status. 710 households of our study sample had been randomly selected to benefit from the CWLP cash-for-work program while 1290 were part of the control groups. We studied heterogeneous treatment effects by treatment status in the CWLP evaluation and found no significant interactions.

**Cash grants** The World Bank worked closely with the Ministry of Vocational Training and Employment (MFPE) and Tunisia’s Center of Arab Women for Training and Research (CAWTAR) to distribute unrestricted cash grants to 1,000 women. Women were directly contacted and informed about the program (and the invitation of their partner to the training if they were selected in the second treatment arm). The program was not advertised in public.

The cash grants were worth TND 634, which is equivalent to USD 768 in PPP terms, USD 240 in nominal terms, and about four times the median monthly income of respondents with an IGA at baseline (TND 176). When the cash grants were delivered in 2018, the price of a goat was about TND 300 dinars, and the price of a young cow was between TND 1000 and TND 1200 (data from preparatory fieldwork). The cash grant amount was determined based on the minimum wage, the price of livestock and the cost of living among the target group in rural Tunisia. We revised the manuscript to provide these pieces of information.

While the grant was unrestricted (Siu et al. 2023), women were encouraged to either invest the money in physical capital (e.g., starting a micro-enterprise) or human capital (paying for vocational training of their choice). Those randomized into treatment received the cash grant in their bank account without any additional restrictions. However, more than 80% of women contacted to receive a grant reported not having a bank or postal account. These women were invited to open a bank or postal account as soon as possible and provide account information at the training session. An official invitation was provided to them by the CAWTAR to facilitate this operation. In practice, many women opted for prepaid ATM cards, which have low transaction costs but limited validity (typically one year). Most participants were able to open an account on time, but others did not. Just after the training sessions, local coordinators and

supervisors continued the work on guiding project beneficiaries to open accounts and collect missing information. At the end of this process, the details of 939 bank or postal accounts were collected, which represents 99% of the women trained (and 94% of the target population). Ten participants could not open a bank account (typically because they did not have an ID card). For these ten women, it was agreed with the bank team to proceed with the payment in cash (the payment was video recorded).

**Training** The cash grants were conditional on attending a one-day training session. CAW-TAR and the World Bank co-developed the trainer’s guide and the training material. The training covered three modules: i) Financial Planning and Budgeting Module, ii) Savings Module, iii) Debt Management Module. Each module included a series of definition, videos, exercises, and debates. Links to videos are provided in Figure A.3. The first module of the training was devoted to financial planning and budgeting (2 hours). The trainers drew the attention of the participants to the difference between the different financial objectives (investment in an income generating activity, investment in human capital, consumption, coping with unforeseen situations). The participants were invited to choose a financial objective and prepare a plan and a budget for its achievement. A practical case was also presented. The second module was focusing on savings (1.5 hours). The trainers presented the different savings services available locally, their characteristics, and modes of use. Scenarios were presented to the participants, who had to choose the savings products most suited to their needs. The last module was devoted to the debt management (1.5 hours). The trainers presented the different sources of funding available locally to meet the needs of participants’ businesses. They also provided information about how to get a loan and how to calculate the cost of credit. Under the supervision of the CAWTAR team, 8 trainers delivered 61 training sessions. An additional training session was facilitated by the field coordinator of the World Bank for women who could not attend their scheduled session. In total 949 women and 444 men attended the training (see photos in Figure A.2). There were 22 participants on average per session. Costs of transportation to the training venue were reimbursed at the end the training.

**Joint Training** 500 randomly selected women were invited to bring their male partner to the training. Couples were asked to sit together and do the exercises together (this demand was not strictly enforced if partners preferred to sit apart). The content of the training was similar for women randomly selected in and out of the joint training with male partners. The videos shown during the training were specifically designed to stimulate gender dialogue (Figure A.3). Each video presents two partners discussing, arguing, and agreeing upon their opposite opinions with regard to household budget management, including the definition of financial objectives and the selection of expenses, investments, savings products. The opinions of the female were presented by the trainers as the best practice.

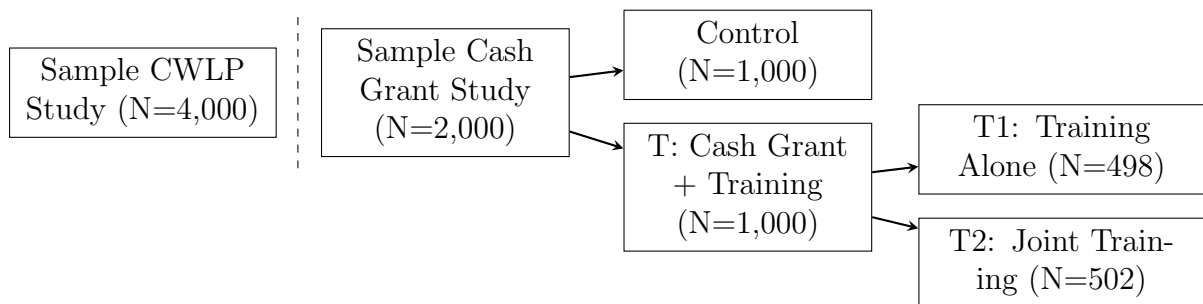


Figure A.1 – Experimental Design

Notes: Women in the cash grant study were recruited from the treatment and control groups of the Community Works and Local Participation (CWLP) randomized experiment, which evaluated the impact of a public-works program. Out of the 2,000 women in the cash grant study, 710 had been assigned to the treatment group of the CWLP program. Random assignment in the cash grant study was not stratified based on prior exposure to the CWLP program.



in Balta (1).jpg



(a) Training session in Balta

in Balta (2).jpg



(b) Training session in Balta

in Bouaouen.jpg



(c) Training session in Bouaouen

in Bousalem (3).jpg



(d) Training session in Bousalem

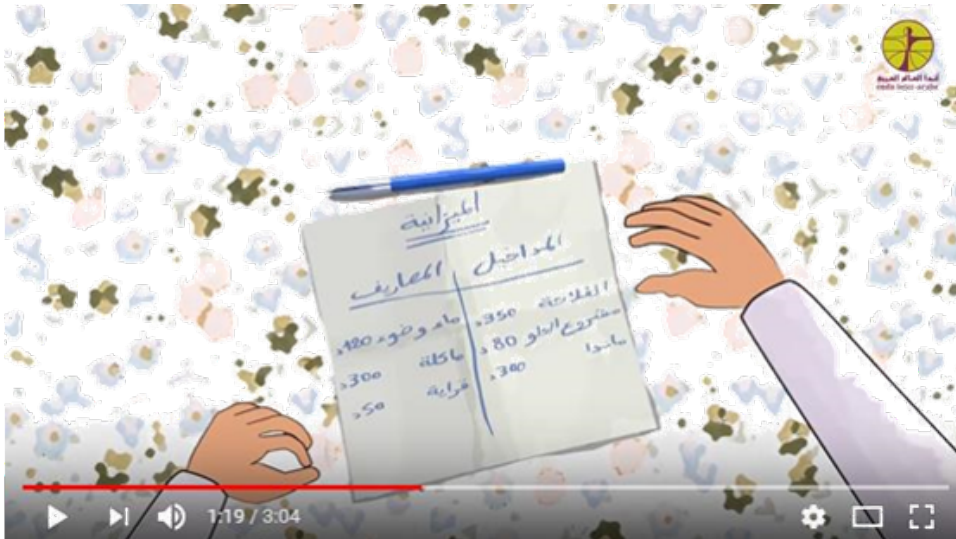
in Ghardima (1).jpg



(e) Training session in Ghardima



(a) Video 1: How to spend the household money wisely ? (Youtube [link](#)) - Script: A couple is doing shopping at the market. The husband is keen to buy a new traditional hat. The husband argues that it is a good deal because the price is low (5 TND). Yet, the wife thinks otherwise and argue that buying the hat would go against the principles of good household budgeting. Indeed, she explains that they already have a hat which, while old, still works fine and, despite the fact that they have money (50 TND), it would be better to invest their savings in their primary livelihood which is agriculture. She reminds the husband of their objective to buy a plot of land and they will be able to reach this objective if they continue to save. She also gives the example of her sister's husband, who managed to purchase a plot of land while keeping the same old hat for years. The husband is convinced by these arguments and does not proceed with the superfluous purchase.



(b) Video 2: Why budgeting? (Youtube [link](#)) - Script: The husband finds his wife analyzing bills and budget tables and asks what she is doing. She explains that she is organizing their bills (water, electricity, school fees) and calculating the income of the household from different sources (agriculture, bakery sales, allocations). The husband questions the utility of doing this tedious work. The wife explains that working on the budget of the household will allow them to reduce expenses and save more money which, ultimately, will allow them to buy a tractor. The husband then recognize the importance of budgeting. At the end of the video, the wife refuse to buy something from a hawker. The husband is impressed by the financial discipline of the wife.

Figure A.3 – Video material presented during training sessions (continued)

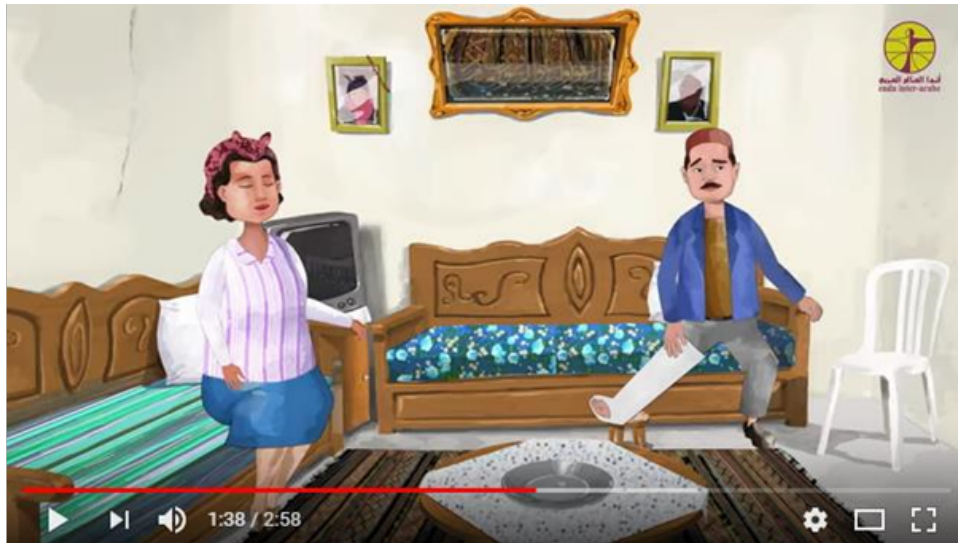


(c) Video 3: How to prepare a budget ? (Youtube [link](#)) - Script: The video provides an overview of the key steps that should be followed to prepare a rigorous household budget. The video explains that budgeting is essential. Every household has financial objectives, whatever their level of income and their expenses. Budgeting is also very important to be able to pay important bills on time and fulfil important objectives. While budgeting may seem a difficult topic, it actually relies on only three essential parameters: prioritization, planning, and financial discipline. The video review these three steps in details, encouraging households to use a notebook to facilitate budgeting and keep records.



(d) Video 4: Why is it important to save money? (Youtube [link](#)) - Script: The video starts with the son who asks to buy a second-hand PlayStation at a fair price. He claims this is a good investment as he is currently spending quite a lot of money when going to the shop to play. His mother reject the demand, arguing that she saved money for him and his sister to pay for their education and cope with unexpected shocks. Three days after, the son says that his mother was right about the PlayStation. However, he asks a new computer for him and his sister, in order to be able to work on their school homework. The mother accepts the demand. The conclusion is that savings is an important tool to realize the financial objectives of the household.

Figure A.2 – Video material presented during training sessions (continued)



(e) Video 5: Saving for emergency situations (Youtube [link](#)) - Script: At the beginning of the video, the husband falls down and breaks his leg while doing DIY. After coming back from the hospital, the husband and wife thank god for what happened and congratulate themselves for having saved enough money for this emergency. Their son ask them to buy chocolate with the money they have kept to purchase the drugs of his father. His mother refuse and argue that it is not the right moment to do superfluous expenses. The conclusion of the video is that savings is very important to be able to cope with unexpected shocks.



(f) Video 6: How to borrow money? (Youtube [link](#)) - Script: In this video, the husband is looking for a microfinance institution to obtain a credit. The husband claims that all institutions there is no need to visit multiple institutions because they are all similar. The wife disagrees with the approach. She explains that it is important to visit multiple institutions and select the one that fits best with what they are looking for (e.g. advice, training, low cost). While debating, they meet their neighbor who just came out of a microfinance branch. He argues that he did a tour of all microfinance institutions and concluded that this one is the cheapest. The wife is pleased to hear the testimony of the neighbor, which confirms her vision. The video concludes that it is very important to compare and select a microfinance institution based on financial and non-financial criteria.

Figure A.2 – Video material presented during training sessions (continued)

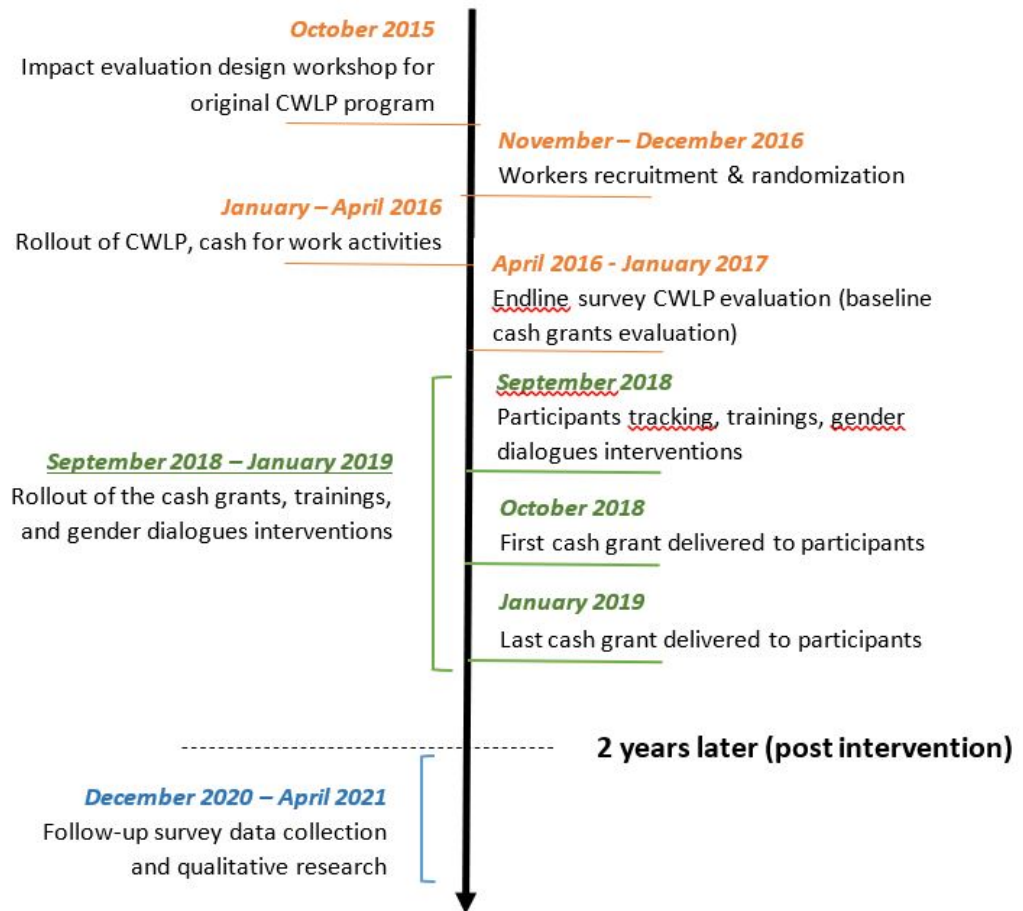


Figure A.3 – Timeline

## B Variables

Table A.1 – Description of the variables analyzed

<b>Women’s IGAs</b>	
Has an IGA	Dummy equal to one if the woman currently has an IGA. The question asked was: “Do you currently have a job or an income-generating activity?”
Had an IGA before COVID	Dummy equal to one if the woman currently has an IGA or if she report having an IGA before the COVID pandemic started (in March 2020). The question asked was: “Did you had an income generating activity before the COVID-19 crisis hit Tunisia (ie in March 2020)?”
Business profit	Business profit in the last 30 days. Positive values have been winsorized at the 10% level (this corresponds to 5 observations).
Business employees	Number of employees in the woman’s business.
Total income	Sum of business profit and income from wage employment in the last 30 days. Positive values have been winsorized at the 10% level (this corresponds to 15 observations).
Hours worked	Hours worked in wage- and self-employment.
<b>IGAs of other household members</b>	
Household head has an IGA	Dummy variable equal to one if the household head has an IGA.
Number of other HH members with IGA	Count variable indicating the number of other household members with an IGA.
Household head income	Income of the household head. Positive values have been winsorized at the 10% level (this corresponds to 61 observations).
Other HH members’ income	Incomes of the other household members. Positive values have been winsorized at the 10% level (this corresponds to 24 observations).
<b>Agriculture</b>	
Household has an agricultural IGA	Dummy equal to one if the household has an agricultural IGA.
Used chemicals	Dummy equal to one if the household has used fertilizers or pesticides since January 2019.
Quantity produced	Quantity of output produced during the 2019 agricultural season in kilos. Positive values have been winsorized at the 10% level (this corresponds to 8 observations).
Value of the production	Value of the production for the 2019 agricultural season in Dinars. Positive values have been winsorized at the 10% level (this corresponds to 11 observations).
<b>Livestock</b>	
HH has a livestock IGA	Dummy equal to one if the household has a livestock IGA.
Total stock	Total value of goats, chickens, cows and mules owned by households. Expressed in Dinars.
Bought since January 2019	Total value of goats, chickens, cows and mules bought since January 2019 by households. Expressed in Dinars.
<b>Women’s empowerment</b>	
women’s agency index	Index constructed from the answers of the woman to questions on her involvement in the decision-making of 11 household decisions (how to spend money from IGA; what food to buy and consume; purchase of furniture of the house; purchase and sale of livestock; purchase of plots of land; purchase of large pots/pans; gifts for relatives who marry/have children; large household purchases; making daily household purchases; borrowing money; lending money) and questions on her involvement regarding five personal decisions (personal purchases; occupation; place of work; working hours; participation in groups). Each question had three possible answers: husband, wife, both. For household decisions, we constructed dummies equal to one if the wife is involved in each decision. For personal decisions, we constructed dummies equal to one if the wife take each decision alone.
Partners’ views index	Index constructed from the answers of the partner to 73 questions on women’s agency, spouses communication, and his perceptions of gender roles, women abilities for economic activities, gender-based violence, reproductive health, and women autonomy (standardized average).
<b>Women financial index</b>	
	Standardized average of nine questions on woman financial access and financial situation. The questions are: dummy variables indicating whether the woman has a bank account, saved money since January 2019, lent money since January 2019, borrowed money since January 2019, and repaid debt since January 2019, as well as variables indicating the amount on the bank account, the amount saved since January 2019, the amount borrowed since January 2019, and the total amount of debt. The positive values of the following outcome variables have all been winsorized at the 10% level: total amount of debt, amount borrowed since January 2019, amount saved since January 2019, and savings in the bank account.

## Women well-being

Current life satisfaction	Response to the question: "Please imagine a ladder with steps numbered from 1 at the bottom to 10 at the top. The top of the ladder represents the best possible life for you and the bottom of the ladder represents the worst possible life for you. On which step of the ladder would you say you personally feel you stand at this time?"
Life satisfaction one year ago	Response to the question: "Please imagine a ladder with steps numbered from 1 at the bottom to 10 at the top. The top of the ladder represents the best possible life for you and the bottom of the ladder represents the worst possible life for you. On which step of the ladder would you say you personally feel you stood one year back?"
Predicted life satisfaction in three years	Response to the question: "Please imagine a ladder with steps numbered from 1 at the bottom to 10 at the top. The top of the ladder represents the best possible life for you and the bottom of the ladder represents the worst possible life for you. On which step do you think you will stand about three years from now?"
Relative wealth	Response to the question: "Please imagine a wealth ladder. I want you to compare your wealth situation against other household of this Imada. Imagine a ladder with 10 steps, poorer household of this Imada being on first step and wealthier on the 10th step. At which step are you now?"
Mental health (MHI-5 score)	The MHI-5 score is based on the responses (scores) to five questions: "During the past month, how much of the time have you felt: A. Happy (1 = never; 6 = always); B. Peaceful (1 = never; 6 = always); C. Nervous (1 = always; 6 = never); D. Downhearted (1 = always; 6 = never); E. Depressed (1 = always; 6 = never)". The MHI-5 is computed by adding the scores of the five questions and then transforming the raw score to a 0-100 point scale: $MHI-5 \text{ score} = 100 \times ((\text{score A} + \text{score B} + \text{score C} + \text{score D} + \text{score E}) - 5) / 25$ . Higher values indicate better mental health.

## Household living standards

Total consumption per capita	Sum of household food consumption and non-food consumption per capita. Expressed in Dinars per day. Positive values have been winsorized at the 10% level (this corresponds to 182 observations).
Food consumption per capita	Sum of household expenses in 11 domains (bread, farine, flour, orge, sorgho; pasta, rice, semolina; fish/sea product; meat; eggs and diary; vegetables; fruits; oil; drinks; spices; tobacco, coffee, tea). Expressed in Dinars per day. Positive values have been winsorized at the 10% level (this corresponds to 178 observations).
Non-food consumption per capita	Sum of household expenses in eight domains (medical expenditures; leisure; clothes; transportation; electricity, gas, water, firewood; communication; soap, detergent, cosmetics; other services; schooling). Expressed in Dinars per day. Positive values have been winsorized at the 10% level (this corresponds to 179 observations).
Asset index (stock)	Standardized index using the method of Filmer and Pritchett (2001) for questions on household stocks of 21 assets (rooms; mattress; radio; regular cell-phone; smartphone; refrigerator; bicycle; motorcycle; chair; generator; ventilator; AC; mat; head lamp; table; equipped living room; library; dresser; electronic iron; sewing machine; TV).
Asset index (bought since 2019)	Standardized index using the method of Filmer and Pritchett (2001) for questions on household purchases of 21 assets since January 2019 (rooms; mattress; radio; regular cell-phone; smartphone; refrigerator; bicycle; motorcycle; chair; generator; ventilator; AC; mat; head lamp; table; equipped living room; library; dresser; electronic iron; sewing machine; TV).

## Shocks and coping mechanisms

Economic shock	Dummy equal to one in case of job loss, failed business or loss of livelihood in the last 24 months.
Other shock	Dummy equal to one in case of death/disease of a household member or theft in the last 24 months.
Extreme coping strategy	Dummy equal to one if the household reduced the number of meals, took children out of school or fostered children to friends to face a shock.
Other coping strategy	Dummy equal to one if the household took debts, received help, sold assets, or used savings to face a shock.

## Migration

Household migration (since baseline)	Dummy equal to one if the household has moved to a different Imada. We impute the value of one for attrited households who could not be tracked because they migrated.
Individual migration (since 2019)	Dummy equal to one if at least one household member has migrated since 2019.
Expected likelihood of future migration	Dummy equal to one if at least one household member is likely or very likely to migrate to another city or governorate in the next 12 months.

## C Internal validity: supplementary tables

Table A.2 – Descriptive statistics and balance

	(1)	(2)	(3)	T-test p-values			Normalized differences		
	Control group	Treatment group 1	Treatment group 2	(1)-(2)	(1)-(3)	(2)-(3)	(1)-(2)	(1)-(3)	(2)-(3)
<b>Respondent variables</b>									
Age	43.110 (10.535)	42.556 (11.179)	42.761 (10.854)	0.348	0.549	0.769	0.051	0.033	-0.019
Completed secondary school	0.181 (0.385)	0.181 (0.385)	0.155 (0.363)	0.990	0.215	0.284	0.001	0.068	0.068
Born in this Imada	0.756 (0.430)	0.721 (0.449)	0.731 (0.444)	0.142	0.294	0.718	0.080	0.057	-0.023
Married	0.757 (0.429)	0.743 (0.437)	0.775 (0.418)	0.554	0.442	0.238	0.032	-0.042	-0.075
Status in the household									
Head	0.083 (0.276)	0.080 (0.272)	0.076 (0.265)	0.859	0.624	0.785	0.010	0.027	0.017
Spouse of the head	0.716 (0.451)	0.711 (0.454)	0.729 (0.445)	0.835	0.594	0.521	0.011	-0.029	-0.041
Daughter of the head	0.163 (0.370)	0.169 (0.375)	0.157 (0.365)	0.781	0.780	0.629	-0.015	0.015	0.031
Other	0.038 (0.191)	0.040 (0.197)	0.038 (0.191)	0.838	0.988	0.850	-0.011	0.001	0.012
Had an IGA in the last month	0.052 (0.222)	0.054 (0.227)	0.038 (0.191)	0.857	0.229	0.222	-0.010	0.067	0.077
Attended a professional training	0.090 (0.286)	0.090 (0.287)	0.086 (0.280)	0.982	0.780	0.793	-0.001	0.015	0.017
Randomly assigned to prior CWLP program	0.361 (0.481)	0.343 (0.475)	0.355 (0.479)	0.502	0.807	0.710	0.037	0.013	-0.023
<b>Household demographics</b>									
Household size	4.609 (1.707)	4.558 (1.619)	4.711 (1.749)	0.581	0.278	0.152	0.031	-0.059	-0.091
Number of adults (18-65)	2.906 (1.579)	2.876 (1.595)	2.962 (1.514)	0.726	0.510	0.378	0.019	-0.036	-0.056
Number of children (<18)	1.279 (1.422)	1.211 (1.315)	1.317 (1.370)	0.371	0.624	0.213	0.050	-0.027	-0.079
Number of elders (>65)	0.424 (0.941)	0.472 (0.997)	0.432 (0.943)	0.363	0.872	0.519	-0.049	-0.009	0.041
<b>Household living conditions</b>									
Daily consumption per capita (in Dinars)	8.122 (13.260)	7.338 (12.525)	6.551 (11.290)	0.273	0.023	0.296	0.061	0.128	0.066
Has dirt floor	0.100 (0.300)	0.120 (0.326)	0.104 (0.305)	0.227	0.828	0.397	-0.065	-0.012	0.054
Has thatched or steel roof	0.064 (0.245)	0.070 (0.256)	0.050 (0.218)	0.645	0.272	0.173	-0.025	0.061	0.086
Owns land	0.146 (0.352)	0.144 (0.350)	0.155 (0.360)	0.907	0.660	0.631	0.006	-0.024	-0.030
Has livestock	0.472 (0.499)	0.480 (0.500)	0.468 (0.499)	0.773	0.887	0.709	-0.016	0.008	0.024
Walking distance (in minutes, one way)									
Water source	27.591 (34.179)	28.492 (34.613)	28.758 (35.706)	0.632	0.538	0.905	-0.026	-0.033	-0.008
Primary school	30.394 (23.116)	31.426 (24.127)	31.993 (24.254)	0.422	0.214	0.711	-0.044	-0.068	-0.023
Food market	40.900 (31.069)	42.987 (32.515)	42.262 (33.892)	0.228	0.437	0.730	-0.066	-0.042	0.022
Headquarter	61.409 (31.175)	63.818 (33.048)	62.681 (32.563)	0.168	0.463	0.584	-0.075	-0.040	0.035
Public transportation station	21.254 (20.686)	23.308 (22.683)	23.106 (21.742)	0.080	0.108	0.886	-0.095	-0.087	0.009
Omnibus F-test p-value	.	.	.	0.910	0.921	0.971	.	.	.
Observations	1,000	498	502	1,498	1,502	1,000	1,498	1,502	1,000

This table reports the balance checks for key variables measured at baseline. Columns 1-3 report the means (and standard deviations in parenthesis) of the different experimental groups. Columns 4-6 report the p-values for T-tests of equality of means between any two of the experimental groups. Columns 7-9 report the standardized differences between any two of the experimental groups (that is the difference in means in units of standard deviation).



Table A.3 – Attrition

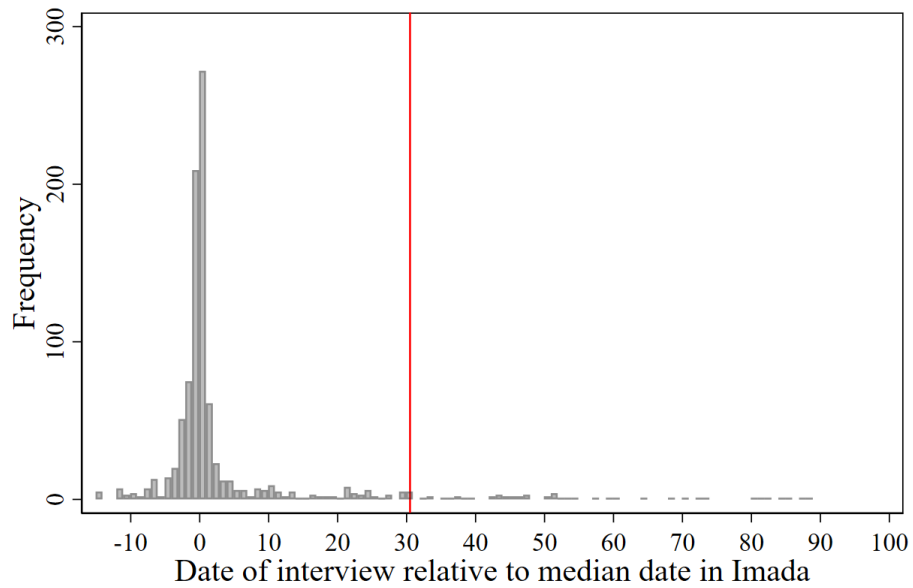
	(1)	(2)	(3)	T-test p-values			Normalized differences		
	Control group	Treatment group 1	Treatment group 2	(1)-(2)	(1)-(3)	(2)-(3)	(1)-(2)	(1)-(3)	(2)-(3)
Attrition	0.112 (0.316)	0.060 (0.238)	0.068 (0.252)	0.001	0.006	0.629	0.185	0.155	-0.031
Attrition reason									
Migrated	0.063 (0.243)	0.038 (0.192)	0.028 (0.165)	0.046	0.004	0.364	0.113	0.169	0.057
Death	0.010 (0.100)	0.002 (0.045)	0.016 (0.125)	0.088	0.319	0.020	0.104	-0.052	-0.148
Refusals	0.021 (0.143)	0.012 (0.109)	0.008 (0.089)	0.220	0.063	0.517	0.070	0.109	0.041
Other	0.018 (0.133)	0.008 (0.089)	0.016 (0.125)	0.131	0.773	0.252	0.088	0.016	-0.073
Observations	1,000	498	502	1,498	1,502	1,000	1,498	1,502	1,000

Notes: Columns 1-3 report the attrition rate for each of the experimental group. Columns 4-6 report the p-values for T-tests of differential attrition rates across experimental groups. Columns 7-9 report the standardized differences in attrition rates between experimental groups (that is the difference in means in units of standard deviation).

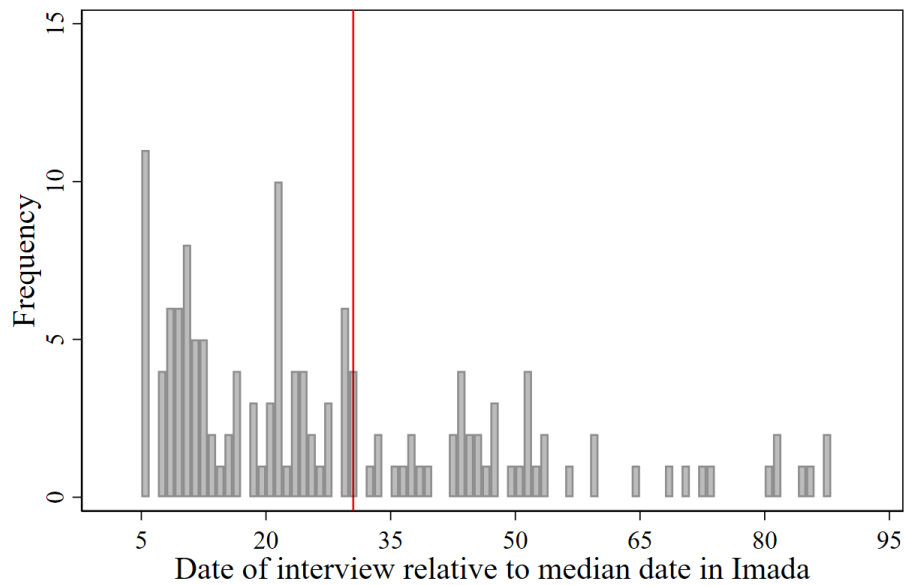
Table A.4 – Balance table after dropping attrited households

	(1)	(2)	(3)	T-test p-values			Normalized differences		
	Control group	Treatment group 1	Treatment group 2	(1)-(2)	(1)-(3)	(2)-(3)	(1)-(2)	(1)-(3)	(2)-(3)
<b>Respondent variables</b>									
Age	43.243 (10.315)	42.630 (11.121)	42.880 (10.702)	0.312	0.543	0.726	0.057	0.035	-0.023
Completed secondary school	0.167 (0.373)	0.177 (0.382)	0.145 (0.353)	0.619	0.307	0.183	-0.028	0.059	0.087
Born in this Imada	0.764 (0.425)	0.716 (0.452)	0.733 (0.443)	0.055	0.214	0.559	0.109	0.071	-0.038
Married	0.769 (0.422)	0.756 (0.430)	0.782 (0.413)	0.600	0.590	0.352	0.030	-0.031	-0.061
Status in the household									
Head	0.084 (0.278)	0.083 (0.277)	0.079 (0.270)	0.943	0.732	0.811	0.004	0.020	0.016
Spouse of the head	0.730 (0.444)	0.722 (0.448)	0.739 (0.439)	0.768	0.705	0.556	0.017	-0.022	-0.039
Daughter of the head	0.151 (0.358)	0.152 (0.359)	0.143 (0.351)	0.969	0.703	0.713	-0.002	0.022	0.024
Other	0.035 (0.184)	0.043 (0.202)	0.038 (0.193)	0.472	0.739	0.741	-0.040	-0.019	0.022
Had an IGA in the last month	0.053 (0.224)	0.053 (0.225)	0.037 (0.187)	0.969	0.176	0.212	-0.002	0.079	0.082
Attended a professional training	0.082 (0.275)	0.092 (0.289)	0.081 (0.273)	0.545	0.949	0.562	-0.034	0.004	0.038
Randomly assigned to prior CWLP program	0.387 (0.487)	0.355 (0.479)	0.372 (0.484)	0.238	0.575	0.587	0.068	0.032	-0.036
<b>Household demographics</b>									
Household size	4.650 (1.718)	4.579 (1.619)	4.754 (1.759)	0.463	0.291	0.113	0.042	-0.060	-0.104
Number of adults (18-65)	2.909 (1.590)	2.868 (1.588)	2.972 (1.521)	0.650	0.479	0.303	0.026	-0.041	-0.067
Number of children (<18)	1.340 (1.451)	1.241 (1.322)	1.363 (1.376)	0.220	0.776	0.168	0.071	-0.016	-0.090
Number of elders (>65)	0.401 (0.942)	0.470 (1.004)	0.419 (0.944)	0.209	0.740	0.421	-0.071	-0.019	0.053
<b>Household living conditions</b>									
Daily consumption per capita (in Dinars)	8.299 (13.477)	7.326 (12.529)	6.672 (11.524)	0.196	0.027	0.406	0.075	0.130	0.054
Has dirt floor	0.097 (0.296)	0.115 (0.320)	0.105 (0.306)	0.287	0.646	0.602	-0.060	-0.026	0.034
Has thatched or steel roof	0.061 (0.239)	0.064 (0.245)	0.049 (0.216)	0.811	0.378	0.323	-0.014	0.051	0.065
Owns land	0.149 (0.355)	0.138 (0.344)	0.149 (0.355)	0.584	0.999	0.630	0.031	-0.000	-0.032
Has livestock	0.479 (0.500)	0.481 (0.500)	0.466 (0.499)	0.940	0.654	0.647	-0.004	0.026	0.030
Walking distance (in minutes, one way)									
Water source	27.803 (34.103)	28.730 (34.763)	29.442 (36.328)	0.636	0.411	0.760	-0.027	-0.047	-0.020
Primary school	30.369 (23.014)	31.044 (23.916)	31.774 (24.473)	0.613	0.296	0.644	-0.029	-0.059	-0.030
Food market	41.186 (31.136)	42.810 (32.487)	41.674 (33.564)	0.369	0.789	0.599	-0.051	-0.015	0.034
Headquarter	61.678 (30.943)	63.222 (32.757)	62.423 (32.575)	0.392	0.679	0.709	-0.048	-0.023	0.024
Public transportation station	21.134 (20.554)	23.245 (22.654)	23.035 (21.515)	0.083	0.111	0.885	-0.098	-0.090	0.009
Omnibus F-test p-value	.	.	.	0.693	0.916	0.984	.	.	.
Observations	888	468	468	1,356	1,356	936	1,356	1,356	936

Notes: This table reports the balance checks after dropping attrited households. Columns 1-3 report the mean (and standard deviations in parenthesis) of the different experimental groups. Columns 4-6 report the p-values for T-tests of equality of means between any two of the experimental groups. Columns 7-9 report the standardized differences between any two of the experimental groups (that is the difference in means in units of standard deviation).



(a) **Panel A:** All interviews in the Treatment group



(b) **Panel B:** Hard-to-reach respondents

Figure A.4 – Distribution of Interview dates Relative to the Median Interview Date in the Imada

Notes: These figures show the distribution of interview dates relative to the median interview date in their Imadas. Red lines delimit the threshold for exact trimming.

Table A.5 – Treatment effects, accounting for attrition

	(1) Main specification	(2) IPW	(3) Behaghel et al. (2015)'s exact trimming	(4) KL bounds +/- .10 SD	(5) .10 SD	(6) KL bounds +/- .25 SD	(7) .25 SD
				Lower bound	Upper bound	Lower bound	Upper bound
<b>Women's IGAs</b>							
Has an IGA	0.013 (0.012)	0.013 (0.012)	0.011 (0.012)	0.008 (0.011)	0.017 (0.011)	0.001 (0.011)	0.023** (0.011)
Had an IGA before COVID	0.011 (0.013)	0.012 (0.013)	0.010 (0.013)	0.005 (0.012)	0.015 (0.012)	-0.002 (0.012)	0.022* (0.012)
Business profit (in Dinars)	0.358 (2.860)	0.595 (2.901)	0.434 (2.937)	-0.802 (2.623)	1.347 (2.623)	-2.414 (2.631)	2.959 (2.630)
Business employees	0.003 (0.012)	0.003 (0.012)	0.003 (0.012)	-0.002 (0.011)	0.007 (0.011)	-0.008 (0.011)	0.013 (0.011)
Total income (in Dinars)	7.932 (6.866)	7.396 (7.031)	6.847 (6.912)	4.709 (6.356)	9.911 (6.353)	0.807 (6.377)	13.812** (6.370)
Total hours worked (last 7 days)	-0.118 (0.433)	-0.121 (0.452)	-0.229 (0.426)	-0.332 (0.398)	-0.332 (0.397)	-0.577 (0.399)	0.237 (0.398)
<b>IGAs of other household members</b>							
Household head has an IGA	0.025 (0.020)	0.021 (0.021)	0.019 (0.021)	0.017 (0.019)	0.033* (0.019)	0.006 (0.019)	0.045** (0.019)
Number of other HH members with an IGA	0.039* (0.020)	0.039* (0.020)	0.042** (0.021)	0.031* (0.019)	0.046** (0.019)	0.020 (0.019)	0.057*** (0.019)
Household head income (in Dinars)	9.389 (10.103)	4.655 (10.203)	3.007 (10.094)	5.511 (9.302)	13.584 (9.305)	-0.324 (9.330)	19.419** (9.334)
Other HH members income (in Dinars)	6.671 (8.672)	7.144 (8.763)	6.964 (8.796)	3.236 (7.955)	9.825 (7.948)	-1.788 (7.980)	14.848* (7.973)
<b>Agriculture</b>							
Household has an agricultural IGA	0.025** (0.011)	0.024** (0.011)	0.026** (0.011)	0.020** (0.010)	0.029*** (0.010)	0.014 (0.010)	0.036*** (0.010)
Used chemicals	0.021** (0.009)	0.023** (0.009)	0.022** (0.009)	0.017** (0.008)	0.024*** (0.008)	0.013 (0.008)	0.029*** (0.008)
Quantity produced	6.077*** (1.859)	5.912*** (1.806)	6.283*** (1.909)	5.454*** (1.704)	6.653*** (1.706)	4.566*** (1.708)	7.542*** (1.709)
Value of the production	12.383*** (4.604)	12.247*** (4.378)	11.710** (4.601)	10.678** (4.221)	13.778*** (4.230)	8.282* (4.232)	16.174*** (4.241)
<b>Livestock</b>							
HH has a livestock IGA	0.047*** (0.016)	0.051*** (0.016)	0.053*** (0.016)	0.040*** (0.015)	0.055*** (0.015)	0.030** (0.015)	0.065*** (0.015)
Total stock (in Dinars)	38.218 (29.484)	38.345 (29.959)	52.938* (29.750)	24.497 (27.072)	46.305* (27.085)	7.342 (27.128)	62.445** (27.220)
Bought since January 2019 (in Dinars)	29.751*** (9.275)	25.134** (10.460)	31.697*** (9.165)	26.200*** (8.505)	33.049*** (8.498)	21.198** (8.529)	38.051*** (8.521)
<b>Women agency index</b>							
	-0.044 (0.038)	-0.036 (0.039)	-0.047 (0.038)	-0.065* (0.035)	-0.035 (0.035)	-0.088** (0.035)	-0.011 (0.035)
<b>Women financial index</b>							
	0.408*** (0.087)	0.414*** (0.091)	0.439*** (0.092)	0.380*** (0.080)	0.436*** (0.080)	0.338*** (0.080)	0.478*** (0.080)
<b>Women well-being</b>							
Cantrill's ladder:							
Current life satisfaction	0.269*** (0.062)	0.243*** (0.062)	0.254*** (0.062)	0.237*** (0.057)	0.289*** (0.057)	0.197*** (0.057)	0.321*** (0.057)
Life satisfaction one year ago	0.239*** (0.060)	0.231*** (0.060)	0.221*** (0.060)	0.203*** (0.055)	0.255*** (0.055)	0.167*** (0.055)	0.294*** (0.055)
Predicted life satisfaction in three years	0.221*** (0.081)	0.196** (0.081)	0.194** (0.082)	0.177** (0.074)	0.249*** (0.075)	0.122 (0.075)	0.303*** (0.075)
Relative wealth	0.244*** (0.067)	0.232*** (0.068)	0.217** (0.068)	0.210*** (0.062)	0.267*** (0.062)	0.166*** (0.062)	0.311*** (0.062)
MHI-5 score	1.405* (0.783)	1.464* (0.790)	0.981 (0.792)	1.049 (0.718)	1.717** (0.718)	0.563 (0.721)	2.204*** (0.721)
<b>Household living standards</b>							
Total consumption per capita	0.638** (0.266)	0.629** (0.269)	0.709*** (0.271)	0.528** (0.245)	0.751*** (0.245)	0.361 (0.246)	0.915*** (0.245)
Food consumption per capita	0.385*** (0.116)	0.395*** (0.118)	0.409*** (0.118)	0.328*** (0.106)	0.432*** (0.106)	0.249** (0.107)	0.509*** (0.107)
Non-food consumption per capita	0.080 (0.120)	0.082 (0.122)	0.122 (0.122)	0.026 (0.110)	0.117 (0.110)	-0.043 (0.111)	0.186* (0.111)
Asset index (stock)	0.126*** (0.038)	0.126*** (0.038)	0.132*** (0.038)	0.106*** (0.035)	0.142*** (0.035)	0.079** (0.035)	0.168*** (0.035)
Asset index (bought since 2019)	0.009 (0.042)	0.010 (0.042)	0.021 (0.041)	-0.010 (0.038)	0.022 (0.038)	-0.034 (0.038)	0.046 (0.038)
<b>Shocks and coping mechanisms</b>							
Economic shock	0.025*** (0.007)	0.024*** (0.007)	0.027*** (0.008)	0.022*** (0.007)	0.027*** (0.007)	0.018*** (0.007)	0.031*** (0.007)
Other shock	-0.002 (0.019)	-0.002 (0.019)	0.002 (0.019)	-0.010 (0.017)	0.004 (0.017)	-0.021 (0.017)	0.015 (0.017)
Extreme coping strategy	-0.028** (0.013)	-0.029** (0.013)	-0.029** (0.013)	-0.034*** (0.012)	-0.024** (0.012)	-0.042*** (0.012)	-0.017 (0.012)
Other coping strategy	0.009 (0.015)	0.008 (0.016)	0.011 (0.016)	0.002 (0.014)	0.014 (0.014)	-0.007 (0.014)	0.023 (0.014)
<b>Migration</b>							
Individual migration (since 2019)	0.002 (0.018)	0.002 (0.018)	-0.001 (0.018)	-0.004 (0.017)	0.009 (0.017)	-0.014 (0.017)	0.019 (0.017)
Expected likelihood of future migration	0.033*** (0.011)	0.030*** (0.011)	0.033*** (0.011)	0.029*** (0.010)	0.037*** (0.010)	0.022** (0.010)	0.043*** (0.010)
<b>Observations</b>	1824	1,824	1,776	2000	2000	2000	2000

Notes: This table reports the results from three methods to test the sensitivity of our results to attrition. Column 1 reports the estimates from Tables 1-3 for reference. Column 2 reports the results weighting the households by their inverse probability of responding to the survey (Inverse Probability Weighting or IPW). Column 3 uses the approach proposed by Behaghel et al. (2015) to identify the observations that should be trimmed in the treatment group to fully close the attrition differential. We exploit the fact that respondents that are hard to track are typically interviewed much later than other respondents in the same village, and we trim the 48 observations in the treatment group with the latest interview dates relative to the median interview date in their village. Columns 4-7 replace outcome values for the attrited households with semi-extreme values as in Kling and Liebman (2004). Columns 4-5: missing treatment and control observations are set to have a 0.20 SD difference in their outcomes (that is we impute mean + 0.10 SD for missing treatment and mean - 0.10 SD for missing controls, and vice versa). Columns 6-7: missing treatment and control observations are set to have a 0.50 SD difference in their outcomes. Robust standard errors are reported in parentheses. \*\*\* p<0.01, \*\* p<0.05, \* p<0.1.

## D Cost-benefit analysis

Table A.6 – Cost-benefit analysis

<b>Panel A: Program costs per household (in 2021 Tunisian Dinars)</b>		
	<b>Estimate</b>	
(1) Direct cash grant costs (including bank charges)	734	
(2) Cost of trainers (wages, transportation, per-diem)	101	
(3) Transportation costs to training (participants)	18	
(4) Other training costs (venue, coffee breaks)	18	
(5) Other costs (coordination, targeting, communication, printing)	158	
(6) Total costs	1,025	
(7) Total costs, inflated to year 2 at 5% annual discount rate	1,130	
<b>Panel B: Benefits per household (in 2021 Tunisian Dinars)</b>		
	<b>Estimate</b>	<b>Confidence interval (95%)</b>
<b>Consumption</b>		
(8) Year 2 ITT effect on yearly consumption	893	[138 - 1,648]
(9) Assumed ITT effect on yearly consumption in year 1	893	[138 - 1,648]
(10) Assumed ITT effect on onward consumption in perpetuity (5% discount rate)	17,411	[2,684 - 32,138]
(11) Total (ITT effect on total post-treatment consumption)	19,197	[2,959 - 35,435]
<b>Assets</b>		
(12) Year 2 ITT effect on animals	38	[-20 - 96]
(13) Year 2 ITT effect on household assets	75	[22 - 128]
(14) Total (ITT effect on total assets)	107	[25 - 189]
(15) Total benefits (ITT effect on total post-treatment consumption + assets)	19,309	[3,057 - 35,560]
<b>Panel C: Cost-benefit ratios</b>		
	<b>Estimate</b>	<b>Confidence interval (95%)</b>
<b>Main estimate</b>		
(16) Benefits-cost ratio (15)/(7)	17.1	[2.7 - 31.5]
(17) Number of years, such that total benefit = total cost	1.1	
<b>Sensitivity analysis</b>		
(18) Benefit-cost ratio, at discount rate of 7%	12.6	[2.0 - 23.1]
(19) Benefit-cost ratio, at discount rate of 10%	9.2	[1.5 - 16.9]

Notes: The program costs reported in Lines (1) to (6) were provided by CAWTAR, the NGO in charge of implementation in 2018. IMF estimates of inflation are used to express values in 2021 Tunisian Dinars. In Line (7), we inflate the total costs to year 2 using a social discount rate of 5% per year. In Line (8), the Year 2 ITT effect on yearly consumption is obtained by estimating equation (1) with a measure of household yearly consumption. The ITT effect on yearly consumption in year 1 (Line 9) is assumed to be equal to the ITT effect on yearly consumption in year 2 (line 8). In Line (10), we assume a social discount rate of 5% to estimate the value of perpetuity of the ITT effect on yearly consumption ( $= -883/\ln(0.95)$ ). In Line (12), the ITT effect on the value of animals is taken from Table 1. In Line (13), the ITT effect on the value of household assets is estimated using equation (1) with a measure of the value of household assets. The unit-value of each asset is estimated using the median replacement value reported in the baseline survey, subject to data availability. In Line (14), the ITT effect on the total value of assets is estimated using equation (1) with a measure of the total value of assets, which is equal to the sum of the value of animals and household assets. In Line (15), the ITT effect on the total value of post-treatment consumption and assets is estimated using equation (1) with a measure of total benefits equal to the sum of the total value of post-treatment consumption and the value of assets.

## E Impact on disaggregated outcomes

Table A.7 – Treatment effects on IGAs (disaggregated results)

	(1) Control Mean	(2) Control SD	Eq (1)		Eq (2)		(7) N
			(3) Treatment	(4) T1: Cash & Training Alone	(5) T2: Cash & Joint Training	(6) p-value T1 = T2	
<b>Woman wage employment</b>							
Is wage employed	0.039	0.195	0.005 (0.009)	0.020* (0.012)	-0.010 (0.010)	0.018	1824
Income from wage employment	27.417	110.614	6.452 (5.407)	18.276** (7.767)	-5.459 (5.539)	0.003	1824
Hours worked	1.099	6.333	-0.059 (0.267)	0.378 (0.372)	-0.499** (0.251)	0.011	1,824
<b>Woman self-employment</b>							
Is self-employed	0.045	0.208	0.010 (0.010)	0.029** (0.013)	-0.009 (0.010)	0.006	1824
Business profit (in Dinars)	9.505	66.500	0.358 (2.860)	3.033 (3.905)	-2.337 (2.985)	0.175	1,824
Hours worked	1.213	6.545	-0.061 (0.276)	0.421 (0.384)	-0.547** (0.260)	0.007	1,824
<b>Income</b>							
Total household income	234.665	359.814	25.171* (14.845)	36.422** (18.393)	13.830 (17.603)	0.268	1,824
Woman income (in Dinars)	35.893	149.039	7.932 (6.866)	21.637** (9.691)	-5.885 (6.993)	0.006	1,824
Household head income (in Dinars)	133.822	230.264	9.389 (10.103)	3.771 (12.148)	15.040 (12.447)	0.422	1,824
Other HH members income (in Dinars)	64.950	198.728	6.671 (8.672)	11.155 (10.818)	2.133 (10.417)	0.462	1,824
<b>Livestock (stock)</b>							
Total value in Dinars	463.197	656.976	38.218 (29.484)	38.743 (36.050)	37.688 (36.017)	0.980	1,824
Goats	258.559	431.242	36.880* (19.345)	39.527 (24.182)	34.214 (22.569)	0.840	1,824
Chicken	22.149	35.132	2.590 (1.767)	2.405 (2.621)	2.776 (1.700)	0.889	1,824
Cows	144.144	359.364	3.237 (17.691)	-0.798 (20.631)	7.295 (23.442)	0.759	1,824
Mules	38.345	69.964	-2.684 (2.949)	-0.735 (3.761)	-4.656 (3.404)	0.338	1,824
<b>Livestock (bought since January 2019)</b>							
Total value in Dinars	32.235	196.140	29.751*** (9.275)	24.685** (10.868)	34.855*** (11.775)	0.435	1,824
Goats	14.414	76.189	18.845*** (4.716)	14.885*** (5.524)	22.835*** (6.850)	0.327	1,824
Chicken	2.337	12.980	3.276** (1.579)	2.206* (1.280)	4.353 (2.654)	0.428	1,824
Cows	14.640	172.225	6.326 (7.069)	6.512 (8.341)	6.140 (7.847)	0.962	1,824
Mules	0.845	11.230	1.304* (0.729)	1.083 (0.961)	1.527* (0.922)	0.710	1,824

Notes: This table reports the intent-to-treat effects of the interventions on IGAs, disaggregating the results from Table 1. Columns 1 and 2 report the mean and standard deviation of the outcome variables in the control group. Column 3 reports the effect of the cash grant and training program ( $\beta_1$  in Equation 1). Columns 4 and 5 report the effect of the cash grant and training program with and without the male partner ( $\beta_1$  and  $\beta_2$  in Equation 2). Column 6 reports the p-value for the null hypothesis that the effect of the cash grant and training program is the same with and without the male partner ( $\beta_1 = \beta_2$  in Equation 2). Robust standard errors are reported in parentheses. \*\*\* p<0.01, \*\* p<0.05, \* p<0.1.

Table A.8 – Treatment effects on woman empowerment (disaggregated results)

	(1)	(2)	Eq (1)		Eq (2)		(7)
	Control	Control	(3)	(4)	(5)	(6)	N
	Mean	SD	Treatment	T1: Cash & Training Alone	T2: Cash & Joint Training	p-value T1 = T2	
<b>Woman sample</b>							
<b>Woman agency index</b>	-0.000	1.000	-0.044 (0.038)	-0.033 (0.046)	-0.056 (0.046)	0.646	1,824
Woman involved in the following <b>household decisions</b> :							
How to spend money from IGA	0.805	0.520	-0.029 (0.019)	-0.034 (0.023)	-0.025 (0.024)	0.745	1,824
What food to buy and consume	0.821	0.502	-0.007 (0.019)	-0.015 (0.022)	0.002 (0.023)	0.513	1,824
Purchase of furniture of the house	0.859	0.492	-0.022 (0.020)	-0.026 (0.024)	-0.018 (0.024)	0.770	1,824
Purchase and sale of livestock	0.784	0.549	-0.043** (0.020)	-0.041* (0.025)	-0.045* (0.024)	0.884	1,824
Purchase of plots of land	0.785	0.550	-0.025 (0.020)	-0.025 (0.024)	-0.026 (0.024)	0.971	1,824
Purchase of large pots/pans	0.877	0.490	-0.019 (0.020)	-0.018 (0.024)	-0.021 (0.024)	0.932	1,824
Gifts for relatives who marry/have children	0.849	0.504	-0.020 (0.020)	-0.021 (0.024)	-0.020 (0.024)	0.972	1,824
Large household purchases	0.780	0.517	-0.018 (0.020)	-0.016 (0.024)	-0.020 (0.024)	0.901	1,824
Making daily household purchases	0.807	0.505	0.009 (0.019)	0.014 (0.023)	0.003 (0.023)	0.681	1,824
Borrowing money	0.794	0.546	-0.023 (0.020)	-0.014 (0.024)	-0.032 (0.024)	0.525	1,824
Lending money	0.783	0.540	-0.008 (0.020)	0.007 (0.024)	-0.022 (0.024)	0.294	1,824
Woman decides for the following <b>personal decisions</b> :							
Personal purchases	0.402	0.618	-0.031 (0.024)	-0.013 (0.030)	-0.050* (0.029)	0.270	1,824
Occupation	0.388	0.614	-0.027 (0.024)	-0.011 (0.030)	-0.042 (0.029)	0.359	1,824
Place of work (home vs outside)	0.364	0.608	-0.034 (0.025)	-0.023 (0.031)	-0.044 (0.029)	0.539	1,824
Working hours	0.364	0.608	-0.031 (0.025)	-0.025 (0.031)	-0.038 (0.029)	0.694	1,824
Participation in groups	0.337	0.592	-0.030 (0.024)	-0.019 (0.030)	-0.041 (0.028)	0.508	1,824
<b>Partner sample</b>							
<b>Partner views index</b>	-0.001	0.999			-0.030 (0.054)		830
Perspectives on gender role index	-0.000	0.999			0.004 (0.053)		830
Perspectives on women abilities index	-0.000	0.999			-0.049 (0.055)		830
Perception of gender based violence index	-0.004	1.002			-0.102 (0.069)		830
Perspectives on reproductive health index	-0.002	0.999			0.073 (0.060)		830
Woman agency index	0.001	0.999			0.031 (0.057)		830
Quality of communication between spouses index	-0.001	0.999			-0.014 (0.053)		830

Notes: This table reports the intent-to-treat effects of the interventions on woman empowerment, disaggregating the results from Table 2. Columns 1 and 2 report the mean and standard deviation of the outcome variables in the control group. Column 3 reports the effect of the cash grant and training program ( $\beta_1$  in Equation 1). Columns 4 and 5 report the effect of the cash grant and training program with and without the male partner ( $\beta_1$  and  $\beta_2$  in Equation 2). Column 6 reports the p-value for the null hypothesis that the effect of the cash grant and training program is the same with and without the male partner ( $\beta_1 = \beta_2$  in Equation 2). Robust standard errors are reported in parentheses. \*\*\*  $p < 0.01$ , \*\*  $p < 0.05$ , \*  $p < 0.1$ .

Table A.9 – Treatment effects on woman financial index and mental health (disaggregated results)

	(1) Control Mean	(2) Control SD	Eq (1)	Eq (2)		(6) p-value T1 = T2	(7) N
			(3) Treatment	(4) T1: Cash & Training Alone	(5) T2: Cash & Joint Training		
<b>Woman financial index<sup>†</sup></b>	0.000	1.000	0.408*** (0.087)	0.408*** (0.133)	0.408*** (0.088)	0.998	1,824
Total amount of debt <sup>†</sup>	816.824	1219.833	-67.440 (52.933)	-91.344 (63.373)	-43.385 (64.516)	0.504	1,824
Borrowed money since January 2019 <sup>†</sup>	0.305	0.461	0.057*** (0.020)	0.035 (0.024)	0.079*** (0.025)	0.129	1,824
Amount borrowed since January 2019 <sup>†</sup>	372.196	840.155	-2.394 (35.997)	-20.791 (43.000)	16.069 (44.658)	0.462	1,824
Repaid debt since January 2019 <sup>†</sup>	0.070	0.255	0.025** (0.012)	0.020 (0.015)	0.030* (0.016)	0.559	1,824
Saved money since January 2019 <sup>†</sup>	0.007	0.082	0.014*** (0.005)	0.013* (0.007)	0.015** (0.007)	0.763	1,824
Amount saved since Jan 2019 <sup>†</sup>	6.926	139.211	10.504 (8.081)	14.018 (11.924)	6.965 (7.201)	0.532	1,824
Has a bank account	0.044	0.205	0.086*** (0.011)	0.077*** (0.014)	0.094*** (0.014)	0.331	1,824
Savings on the bank account	0.338	5.806	4.552*** (1.476)	5.646** (2.312)	3.449** (1.488)	0.387	1,824
Lent money since January 2019 <sup>†</sup>	0.011	0.106	0.009* (0.006)	0.005 (0.007)	0.013* (0.007)	0.363	1,824
<b>MHI-5 score</b>	43.154	19.500	1.405* (0.783)	2.119** (0.940)	0.686 (0.952)	0.178	1,824
How much of the time during the past month have you felt:							
A. Nervous (1 = always; 6 = never)	3.264	1.435	0.063 (0.056)	0.099 (0.067)	0.028 (0.068)	0.347	1,824
B. Downhearted (1 = always; 6 = never)	3.249	1.464	0.077 (0.056)	0.092 (0.068)	0.061 (0.067)	0.676	1,824
C. Depressed (1 = always; 6 = never)	3.426	1.394	0.084 (0.054)	0.130** (0.064)	0.036 (0.067)	0.203	1,824
D. Happy (1 = never ; 6 = always)	2.925	1.245	0.101** (0.051)	0.139** (0.063)	0.063 (0.062)	0.283	1,824
E. Peaceful (1 = never ; 6 = always)	2.855	1.097	0.058 (0.049)	0.099 (0.062)	0.017 (0.058)	0.230	1,824

Notes: This table reports the intent-to-treat effects of the interventions on a financial index, disaggregating the results from Table 2. Columns 1 and 2 report the mean and standard deviation of the outcome variables in the control group. Column 3 reports the effect of the cash grant and training program ( $\beta_1$  in Equation 1). Columns 4 and 5 report the effect of the cash grant and training program with and without the male partner ( $\beta_1$  and  $\beta_2$  in Equation 2). Column 6 reports the p-value for the null hypothesis that the effect of the cash grant and training program is the same with and without the male partner ( $\beta_1 = \beta_2$  in Equation 2). *MHI-5 score*: The MHI-5 is computed by adding the scores of the five question and then transforming the raw score to a 0-100 point scale:  $MHI-5 \text{ score} = 100 \times ((\text{score A} + \text{score B} + \text{score C} + \text{score D} + \text{score E}) - 5) / 25$ . Outcomes denoted with <sup>†</sup> are available at baseline (and used as control). Regressions also include enumerator fixed effects and a vector of control variables selected using the double LASSO method of Chernozhukov et al. (2017). As our impact evaluation builds on the sample of a previous experiment, we control for women's treatment status in that prior experiment in all regressions. Robust standard errors are reported in parentheses. \*\*\* p<0.01, \*\* p<0.05, \* p<0.1.



Table A.10 – Treatment effects on household asset index (disaggregated results)

	(1) Control Mean	(2) Control SD	Eq (1)		Eq (2)		(7) N
			(3) Treatment	(4) T1: Cash & Training Alone	(5) T2: Cash & Joint Training	(6) p-value T1 = T2	
<b>Asset index (stock)<sup>†</sup></b>	0.000	1.000	0.126*** (0.038)	0.148*** (0.049)	0.105** (0.043)	0.425	1,824
Rooms	2.274	1.352	0.123** (0.049)	0.127** (0.062)	0.119** (0.058)	0.907	1,824
Mattress	4.012	1.976	0.138 (0.085)	0.229** (0.103)	0.047 (0.106)	0.138	1,824
Radio	0.232	0.523	0.011 (0.020)	0.004 (0.024)	0.018 (0.024)	0.600	1,824
Regular cell-phone	1.729	1.302	-0.008 (0.053)	-0.032 (0.065)	0.017 (0.062)	0.474	1,824
Smart-phone	0.564	1.019	0.058 (0.043)	0.093* (0.055)	0.023 (0.050)	0.250	1,824
Refrigerator	1.285	11.081	-0.373 (0.368)	-0.394 (0.385)	-0.352 (0.352)	0.498	1,824
Bicycle	0.052	0.232	0.006 (0.011)	-0.009 (0.012)	0.022 (0.015)	0.046	1,824
Motorcycle	0.050	0.217	0.019* (0.011)	0.010 (0.013)	0.029** (0.014)	0.228	1,824
Chair, bench	3.758	2.330	0.158 (0.098)	0.183 (0.116)	0.134 (0.121)	0.721	1,824
Generator	0.002	0.047	0.011*** (0.004)	0.009* (0.005)	0.013** (0.006)	0.635	1,824
Ventilator	0.101	0.407	0.029* (0.015)	0.023 (0.018)	0.035** (0.017)	0.533	1,824
AC	0.037	0.195	0.005 (0.010)	0.011 (0.013)	-0.001 (0.010)	0.390	1,824
Mat	0.845	0.846	0.095*** (0.036)	0.062 (0.047)	0.128*** (0.043)	0.206	1,824
Head lamp	0.280	0.462	-0.012 (0.020)	0.004 (0.024)	-0.028 (0.024)	0.263	1,824
Table	1.171	0.822	0.143*** (0.034)	0.160*** (0.045)	0.126*** (0.041)	0.500	1,824
Equipped living room (table, armchairs)	0.330	0.529	0.053** (0.022)	0.061** (0.029)	0.046* (0.025)	0.631	1,824
Library	0.267	0.445	0.034* (0.020)	0.058** (0.024)	0.010 (0.024)	0.090	1,824
Dresser	0.761	0.729	0.021 (0.029)	0.039 (0.036)	0.002 (0.035)	0.363	1,824
Electric iron	0.114	0.467	0.005 (0.017)	0.016 (0.021)	-0.007 (0.018)	0.227	1,824
Sewing machine	0.015	0.129	0.014* (0.008)	0.016 (0.012)	0.012 (0.008)	0.739	1,824
TV	0.840	0.385	0.042** (0.017)	0.029 (0.022)	0.054*** (0.019)	0.275	1,824

Notes: This table reports the intent-to-treat effects of the interventions on a household asset index, disaggregating the results from Table 3. Columns 1 and 2 report the mean and standard deviation of the outcome variables in the control group. Column 3 reports the effect of the cash grant and training program ( $\beta_1$  in Equation 1). Columns 4 and 5 report the effect of the cash grant and training program with and without the male partner ( $\beta_1$  and  $\beta_2$  in Equation 2). Column 6 reports the p-value for the null hypothesis that the effect of the cash grant and training program is the same with and without the male partner ( $\beta_1 = \beta_2$  in Equation 2). Outcomes denoted with <sup>†</sup> are available at baseline (and used as control). Regressions also include enumerator fixed effects and a vector of control variables selected using the double LASSO method of Chernozhukov et al. (2017). As our impact evaluation builds on the sample of a previous experiment, we control for women's treatment status in that prior experiment in all regressions. Robust standard errors are reported in parentheses. \*\*\*  $p < 0.01$ , \*\*  $p < 0.05$ , \*  $p < 0.1$ .

Table A.11 – Treatment effects on shocks, coping strategies, and migration (disaggregated results)

			Eq (1)		Eq (2)		(7) N
	(1) Control Mean	(2) Control SD	(3) Treatment	(4) T1: Cash & Training Alone	(5) T2: Cash & Joint Training	(6) p-value T1 = T2	
<b>Shocks in the last two years</b>							
<b>Economic shock<sup>†</sup></b>	0.016	0.125	0.025*** (0.007)	0.020** (0.009)	0.030*** (0.010)	0.401	1,824
Job loss, failed or bad business <sup>†</sup>	0.005	0.067	0.018*** (0.005)	0.016** (0.007)	0.020*** (0.007)	0.667	1,824
Loss of livelihood due to unexpected large expenses <sup>†</sup>	0.002	0.047	0.005 (0.003)	0.005 (0.004)	0.004 (0.004)	0.853	1,824
Loss of livelihood due to natural disasters <sup>†</sup>	0.009	0.095	0.002 (0.005)	-0.002 (0.005)	0.006 (0.006)	0.250	1,824
<b>Other shock<sup>†</sup></b>	0.250	0.433	-0.002 (0.019)	-0.019 (0.022)	0.016 (0.023)	0.189	1,824
Death of a household member <sup>†</sup>	0.041	0.197	0.002 (0.009)	0.010 (0.012)	-0.005 (0.011)	0.248	1,824
Disease of a household member <sup>†</sup>	0.220	0.461	-0.014 (0.019)	-0.041* (0.022)	0.013 (0.025)	0.043	1,824
Confiscation of fields <sup>†</sup>	0.000	0.000	0.000 (0.000)	0.000 (0.000)	0.000 (0.000)	.	1,824
Theft <sup>†</sup>	0.002	0.047	0.002 (0.003)	0.003 (0.003)	0.002 (0.004)	0.819	1,824
Other <sup>†</sup>	0.014	0.116	0.009 (0.006)	0.004 (0.007)	0.015* (0.008)	0.230	1,824
<b>Coping strategy to face the shock<sup>†</sup></b>							
<b>Extreme coping strategy<sup>†</sup></b>	0.123	0.328	-0.028** (0.013)	-0.018 (0.015)	-0.038** (0.015)	0.236	1,824
Reduced the number of meals <sup>†</sup>	0.111	0.315	-0.020 (0.012)	-0.011 (0.014)	-0.028* (0.015)	0.298	1,824
Took children out of school <sup>†</sup>	0.017	0.129	-0.011** (0.005)	-0.010* (0.006)	-0.012** (0.005)	0.688	1,824
Sending children to friends <sup>†</sup>	0.002	0.047	-0.001 (0.002)	0.000 (0.003)	-0.002 (0.002)	0.292	1,824
<b>Other coping strategy<sup>†</sup></b>	0.152	0.359	0.009 (0.015)	-0.023 (0.018)	0.041** (0.020)	0.005	1,824
Took debts (friends, neighbors, cooperatives) <sup>†</sup>	0.137	0.393	0.000 (0.017)	-0.016 (0.020)	0.016 (0.023)	0.206	1,824
Received help (community, NGO) <sup>†</sup>	0.014	0.125	-0.002 (0.005)	-0.003 (0.006)	-0.001 (0.006)	0.820	1,824
Received from family members outside the village <sup>†</sup>	0.026	0.159	0.000 (0.007)	-0.012* (0.007)	0.012 (0.010)	0.011	1,824
Sale of household goods, fields, cattle <sup>†</sup>	0.026	0.173	0.005 (0.008)	-0.003 (0.009)	0.012 (0.010)	0.199	1,824
Used the savings <sup>†</sup>	0.015	0.120	-0.001 (0.005)	0.001 (0.007)	-0.003 (0.006)	0.507	1,824

Notes: Notes: This table reports the intent-to-treat effects of the interventions on shocks and coping strategies, disaggregating the results from Table 3. Columns 1 and 2 report the mean and standard deviation of the outcome variables in the control group. Column 3 reports the effect of the cash grant and training program ( $\beta_1$  in Equation 1). Columns 4 and 5 report the effect of the cash grant and training program with and without the male partner ( $\beta_1$  and  $\beta_2$  in Equation 2). Column 6 reports the p-value for the null hypothesis that the effect of the cash grant and training program is the same with and without the male partner ( $\beta_1 = \beta_2$  in Equation 2). Outcomes denoted with <sup>†</sup> are available at baseline (and used as control). Regressions also include enumerator fixed effects and a vector of control variables selected using the double LASSO method of Chernozhukov et al. (2017). As our impact evaluation builds on the sample of a previous experiment, we control for women's treatment status in that prior experiment in all regressions. Robust standard errors are reported in parentheses. \*\*\* p<0.01, \*\* p<0.05, \* p<0.1.