



**HAL**  
open science

## SCA0Pest pesticide-free agroforestry cropping system: effects on weed communities

David Grandgirard, Michel-Pierre Faucon, Malaury François, Athéna  
Seyed-Esmail, Elena Garcia, Léo Simon, Gilles Salitot

► **To cite this version:**

David Grandgirard, Michel-Pierre Faucon, Malaury François, Athéna Seyed-Esmail, Elena Garcia, et al.. SCA0Pest pesticide-free agroforestry cropping system: effects on weed communities. 4th European Agroforestry Conference - Agroforestry as Sustainable Land Use, European Agroforestry Federation, May 2018, Nijmegen, Netherlands. hal-04358297

**HAL Id: hal-04358297**

**<https://hal.science/hal-04358297>**

Submitted on 25 Jan 2024

**HAL** is a multi-disciplinary open access archive for the deposit and dissemination of scientific research documents, whether they are published or not. The documents may come from teaching and research institutions in France or abroad, or from public or private research centers.

L'archive ouverte pluridisciplinaire **HAL**, est destinée au dépôt et à la diffusion de documents scientifiques de niveau recherche, publiés ou non, émanant des établissements d'enseignement et de recherche français ou étrangers, des laboratoires publics ou privés.



Distributed under a Creative Commons Attribution - NonCommercial - NoDerivatives 4.0  
International License

# SCA0PEST pesticide-free agroforestry cropping system: effects on weed communities

François M<sup>1</sup>, Seyed Esmail A<sup>2</sup>, Garcia E<sup>3</sup>, Faucon MP<sup>4</sup>, Grandgirard D<sup>4</sup>, Simon L<sup>4\*</sup>, Salitot G<sup>5</sup>

Correspondence author: [leo.simon@unilasalle.fr](mailto:leo.simon@unilasalle.fr)

(1) Université de Lorraine Campus Aiguillettes, 54506 Vandœuvre les Nancy, France. (2) Université Picardie Jules Verne, 80000 Amiens, France. (3) Université Caen Normandie, 14032 Caen, France. (4) Institut Polytechnique UniLasalle Beauvais, 60026 Beauvais, France. (5) Chambre d'agriculture de l'Oise, 60021 Beauvais, France.

## Abstract

SCA0Pest project tests a pesticides free agroforestry cropping system. The evolution of weed abundance, diversity and the ratios of weed/crops biomass have been assessed over 4 years within the cropping system and show that there are differences according to years, crops and farming practices. Weeds populations are gradually responding to changes in the system and related to management. Landscape seem to have an impact on the weed community structure as presence of grass strips don't.

**Keywords:** Pesticide-free, cropping system, weed management, agroforestry.

## Introduction

Intensive use of chemistry has simplified the cropping systems and led to the set-up of monoculture and soil tillage reduction (Chikowo et al., 2009, Letourneau et al., 2011). Although pesticides use contributed to end yield losses by stabilizing infestations, it remains responsible for: i) soil and water pollution (Pardo et al., 2010) or/and biodiversity loses (Petit et al., 2010; Perronne et al., 2014), ii) appearance of resistance (Valantin-Morison et al., 2008), or again iii) economic issues due to products cost increase. Therefore, alternatives for pest control appear by end 20th century and are multiple: to adapt seedling rate and date, intercropping, mechanical weeding, rotation lengthening and diversification, variety mixtures use (Chikowo et al., 2009; Deytieux et al., 2012; Letourneau et al., 2011).

SCA0PEST project as a PECS (Productive and Efficient Cropping Systems, Grandgirard et al., 2014) tests a pesticides free agroforestry cropping system. The project aims at observing weed communities' evolutions within the cropping system, evaluating effectiveness of the alternative agricultural practices chosen. To this end: i) longitudinal weed density evolution is followed, ii) weed contamination from grass strips is characterized and iii) weed communities (species and traits) is described.

## Material

By September 2013, the SCA0PEST PECS was set up within a 34ha and 5-years old alley cropping agroforestry matrix (N49°28'21", E2°03'55"). Each year, 6 over the 8 terms of the crop rotations are present on a 0.5ha acreage plot (P1 to P6) each and are separated by standard trees lines distant of 30m each other (Grandgirard D. & al 2014).

Crop rotation includes in order sunflower ("ToLuz"; *Helianthus annuus*) alfalfa association, 2 years alfalfa ("Luz1", "Luz2"; *Medicago sativa*), winter wheat ("blé1"; *Triticum aestivum*), oilseed rape ("Colza"; *Brassica napus*), spring barley ("OP"; *Hordeum vulgare*), field bean ("FevH"; *Vicia faba*) and winter wheat again ("blé2"). Experimental follow up are organised yearly according to the Res0pest project experimental standards (Cellier et al., 2014). They are dedicated to measurement of crops sanitary status, assessment of the spatiotemporal weeds and pests' pressures, and their consequences on yields and harvest quality (Grandgirard D. & al 2014). Each of the 6 plots has 8 measurement stations of 16m<sup>2</sup> every 20m lengthwise (fig1). Distance between grass strips and stations varies from 5 to 14m. Each station includes a 0.36m<sup>2</sup> quadrat. Weed characterization consist in 4 annual surveys during which i) all different species in the plot are inventoried and weed density is ii) estimated in each 16m<sup>2</sup> stations (Barralis method) and iii) precisely determined in each 0.36m<sup>2</sup> quadrat. Last survey includes a biomass sampling. Data analysis was done by using multivariate NMDS and PCA procedures and having recourse to Friedmann and Mann-Whitney post-hoc tests. All statistical analysis were performed using the R 3.3.1 package.

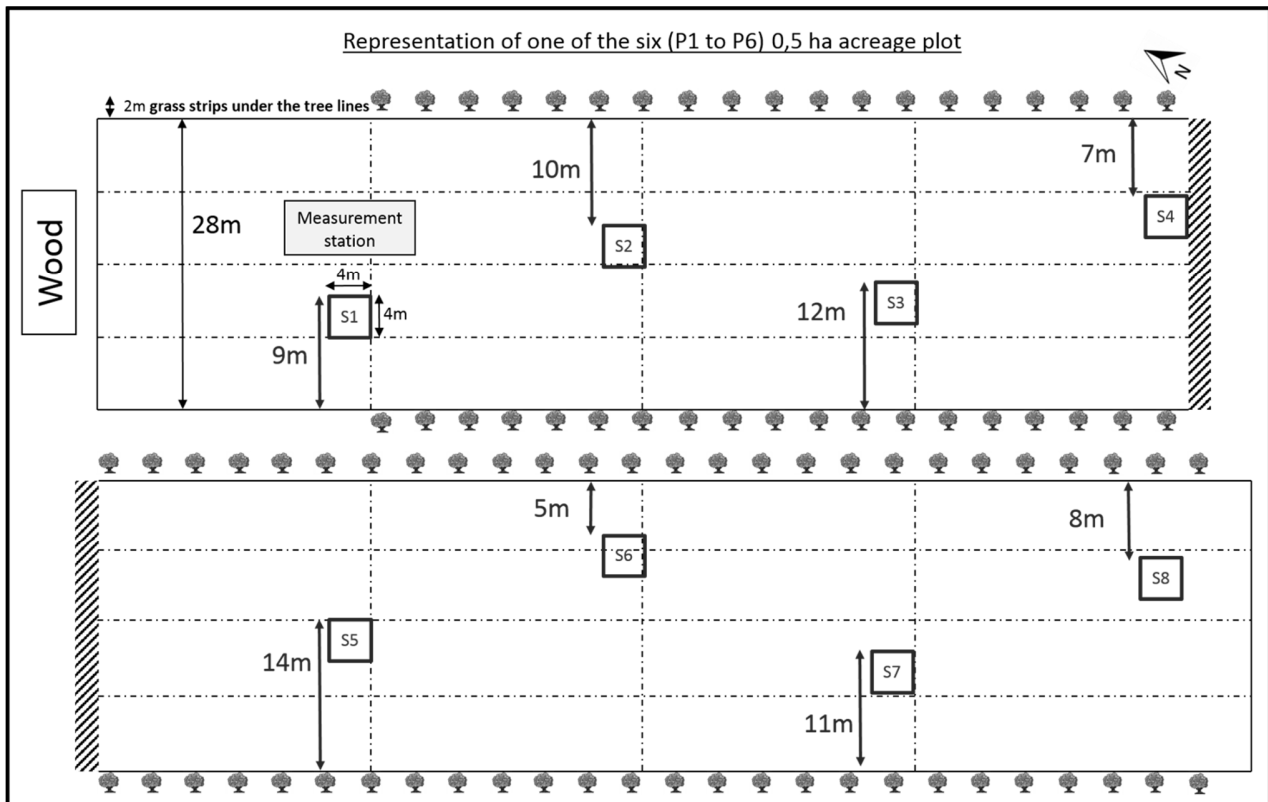


Figure 1: Schematic representation of a plot

## Results

**Crops effect on weed density, diversity and dry matter.** Friedman test on each plot followed by Mann-Whitney post-hoc paired test were used. Significant crop effect on weed density is observed on several plots. Weed density and dry biomass ratio on P1 plot are significantly higher for Luz1 compared to the years before and after. In the two plots (P1 and P6) where alfalfa cycle was completed (ToLuz – Luz1 – Luz2), weed biomass ratio decreases the second year of alfalfa (Luz2). OP always presents the lowest weed density. Cumulative histogram of weed species by crop (mixing plot and year) shows differences in floristic composition. NMDS (fig. 2) were realised for each year of study (2014 to 2017). Weed species composition differences between plots are stronger last year of study (2017). Weed species composition found in Luz1 and Luz2 seems to differ from other crops.

**Effects of cultural interventions.** Principal component analysis (PCA) showed links between group of cultural intervention variables and weed density, dry biomass ratio and diversity variables. Correlation and significance tests highlighted negative relations between weed density and the number of hoeing, total annual fertilization, cumulated fertilization, ammo nitrate fertilization; and positive relations with the number of grinding. Weed species richness is positively correlated with weed density but negatively correlated with the number of hoeing, total annual fertilization and cumulated fertilization. Weed dry biomass ratio is positively correlated with weed density and weed species richness.

**Grass strips and landscape effects.** Cumulative histograms of weed species in stations (S1 to S8) show a visual effect of wood distance (north-south gradient) but no effect of grass strips distance (middle-edges gradient).

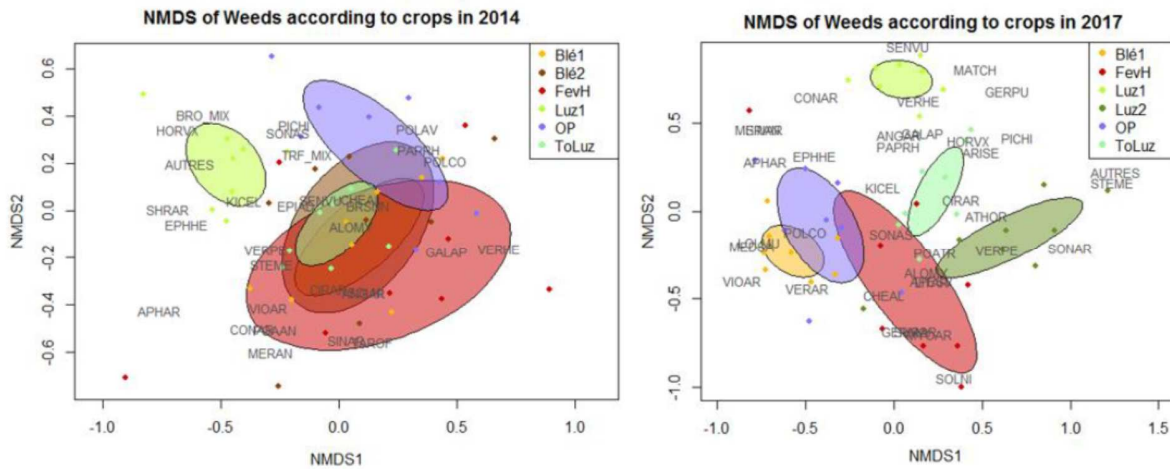


Figure 2: NMDS representations for years 2014 and 2017

## Discussion

Weed density and dry biomass ratio. Crops seem to influence weed density. Analysis did not show any year effect. Weed density differences depend on i) crop competitiveness potential (Chikowo et al., 2009), ii) specific technical managements (Valantin-Morison et al., 2008). First alfalfa year (Luz1) possess the greatest weed density as spring barley (OP) possess the lowest. Spring barley (OP) early sowed in the beginning of spring period often grow and develop before weed species. Sunflower alfalfa association (ToLuz) sowed later during spring period allow more weed species to install, increasing weed density the following year (Luz1). PCA and correlation test showed that certain agricultural practices influence more weed populations than others. Ploughing, hoeing and nitrogen fertilization were correlated with low weed density levels. In four years of study, global weed density did not seem to have negatively evolved. All the agricultural practices and solutions set up to compensate lack of pesticides use seem to maintain control on weed infestation.

Weed species richness. Global cropping system weed diversity remain high (70 different species). First four years of study did not prove weed biodiversity increase. Agroforestry and grass strips constitute habitat for animal and vegetal species (Marshall et al., 1995) increasing cropping system biodiversity. This should be considered in species richness calculation. Diversified crop rotation, agroforestry and lack of pesticides use enhance weed species richness compared to more simple cropping systems. (Petit et al., 2010, Marshall et al., 1995). Four years of study do not permit to know how weed communities will evolve on the long term. Weed species composition and biological traits.

Grass strips and landscape effects. Marshall et al. (1995) suggest that weed species presence depends on specific habitats within and around the field. Some species found in the grass strips were never found in the cultivated parts. Only few species were regularly found in both field and grass strips. Few species found in the field were never found in grass strips. At plot scale, distance from wood (landscape effect) influence more floristic composition than distance to grass strips.

## Conclusion

First results of pesticide free agroforestry Sca0pest cropping system effects on weed communities did not show negative evolution in four years of study. Crop rotation and technical management seem efficient enough to avoid pesticides use. Weed diversity did not show neither positive nor negative evolution. Grass strips floristic diversity (lot of species not found in the fields) has not being precisely characterized but surely contribute to increase global species richness of the cropping system. Moderate grass strips management (one mowing per year) seem to prevent weed species from spreading into the field. Weed floristic composition changed and adapted in the different plots under cumulated effects of crops, cultural interventions and year.

## References

- Chikowo R & al (2009) Integrated Weed Management systems allow reduced reliance on herbicides and long-term weed control. *Agriculture, Ecosystems and Environment*. Vol.5 pp 237-242.
- Deytieux V & al (2012) Is Integrated Weed Management efficient for reducing environmental impacts of cropping systems? A case study based on life cycle assessment. *European Journal of Agronomy*. Vol.36 pp 55-65.
- Garnier E & al (2012) A trait-based approach to comparative functional plant ecology: concepts, methods and applications for agroecology. A review. *Agronomy for Sustainable Development*. Vol.32 pp 365-399.
- Grandgirard, D & al (2014) SCA0PEST, a pesticide-free agroforestry cropping system: its ex-ante performances evaluation. 2nd European Agroforestry Conference, At Cottbus, Germany.
- Letourneau, D.K & al (2011) Does plant diversity benefit agroecosystems? A synthetic review. *Ecological Application*. Vol.21 pp 9-21.
- Marshall, E.J.P (1995) Factors affecting field weed and field margin flora on a farm in Essex, UK. *Landscape and Urban Planning*. Vol.31, pp 205-216.
- Navas M.L (2012) Trait-based approaches to unravelling the assembly of weed communities and their impact on agro-ecosystem functioning. *Weed Research*. Vol.52 pp 479-488.
- Pardo G & al (2010) Using a farming system model to evaluate cropping system prototypes: Are labour constraints and economic performances hampering the adoption of Integrated Weed Management? *European Journal of Agronomy*. Vol.33 pp 24-32.
- Perronne, R & al (2014) The interspecific variation of functional traits in weeds: diversified ecological strategies within arable fields. *Acta Botanica Gallica: Botany Letters*. Vol.161 pp 243-252.
- Petit, S & al (2010) Weeds in agricultural landscapes. A review. *Agronomy for Sustainable Development*. Vol.31 pp 309-317.
- Valantin-Morison M & al (2008) Comment maîtriser la flore adventice des grandes cultures à travers les éléments de l'itinéraire technique? *Innovations Agronomiques*. Vol.3 pp 27-41.
- Violle C & al (2007) Let the concept of trait be functional! *Oikos*. Vol.116 pp 882-892.