



HAL
open science

Bayesian Optimization for the Inverse Problem in Electrocardiography

Alejandro Lopez-Rincon, David Rojas-Velazquez, Johan Garssen, Sander van der Laan, Daniel Oberski, Alberto Tonda

► **To cite this version:**

Alejandro Lopez-Rincon, David Rojas-Velazquez, Johan Garssen, Sander van der Laan, Daniel Oberski, et al.. Bayesian Optimization for the Inverse Problem in Electrocardiography. IEEE Symposium Series on Computational Intelligence, Dec 2023, Mexico City, Mexico. hal-04358064

HAL Id: hal-04358064

<https://hal.science/hal-04358064v1>

Submitted on 21 Dec 2023

HAL is a multi-disciplinary open access archive for the deposit and dissemination of scientific research documents, whether they are published or not. The documents may come from teaching and research institutions in France or abroad, or from public or private research centers.

L'archive ouverte pluridisciplinaire **HAL**, est destinée au dépôt et à la diffusion de documents scientifiques de niveau recherche, publiés ou non, émanant des établissements d'enseignement et de recherche français ou étrangers, des laboratoires publics ou privés.

Bayesian Optimization for the Inverse Problem in Electrocardiography

1th Alejandro Lopez-Rincon

*Division of Pharmacology,
Utrecht University,
Department of Data Science,
Julius Center for Health Sciences
and Primary Care, University Medical
Center Utrecht
Utrecht, NL
a.lopezrincon@uu.nl*

2st David Rojas-Velazquez

*Division of Pharmacology,
Utrecht University,
Department of Data Science,
Julius Center for Health Sciences
and Primary Care, University Medical
Center Utrecht
Utrecht, NL
e.d.rojasvelazquez@uu.nl*

3th Johan Garssen

*Division of Pharmacology,
Utrecht University,
Global Centre of Excellence
Immunology Danone
Nutricia Research
Utrecht, NL
J.Garssen@uu.nl*

4th Sander W. van der Laan

*Central Diagnostics Laboratory,
Division Laboratory,
Pharmacy, and Biomedical genetics,
UMC Utrecht, Utrecht University
Center of Public Health Genomics
University of Virginia,
Charlottesville VA, USA
s.w.vanderlaan-2@umcutrecht.nl*

5th Daniel Oberski

*Department of Data Science,
Julius Center for Health Sciences
and Primary Care, University Medical
Center Utrecht
Dept of Methodology and Statistics
Utrecht University
Utrecht, NL
d.l.oberski@umcutrecht.nl*

6th Alberto Tonda

*UMR 518 MIAPS, INRAE,
Université Paris-Saclay,
Institut des Systèmes
Complexes de Paris
ÎledeFrance (ISC-PIF)
- UAR 3611 CNRS
Paris, FR
alberto.tonda@inrae.fr*

Abstract—The inverse problem in electrocardiography is an ill-posed problem where the objective is to reconstruct the electrical activity of the epicardial surface of the heart, given the electrical activity on the thorax’ surface. In the forward problem, the electrical propagation from heart to thorax is modeled by the volume conductor equation with Dirichlet boundary conditions in the heart’s surface, and null flux coming from the thorax. The inverse problem, however, does not have a unique solution. In order to find solutions for the inverse problem, techniques such as Tikhonov regularization are classically used, but they often deliver unrealistic solutions. As an alternative, we propose a novel approach, where a fixed solution of the volume conductor model with a source in a forward scheme is used to solve the inverse problem. The unknown values for parameters of the fixed solution can be found using optimization techniques. Due to the characteristics of the problem, where each single evaluation of the cost function is expensive, we use a specialized CMA-ES-based Bayesian optimization technique, that can deliver good results even with a reduced number of function evaluations. Experiments show that the proposed approach can deliver improved results for in-silico simulations.

Index Terms—inverse problems, bayesian optimization, ECGI

I. INTRODUCTION

The main cause of more than 17 million deaths annually in the world are heart-related diseases¹. Understanding the electrical activity of the heart to provide accurate and timely diagnosis is an important key to decrease the risk of death from

these diseases. To this aim, different signal analysis techniques such as electrocardiography (ECG), phonocardiography (PCG) and photoplethysmography (PPG) are commonly used [1].

Non-invasive electrocardiographic imaging (ECGI) is an increasingly used imaging modality that is based on the numerical reconstruction of cardiac electrical activity using body surface potential measurements and patient-specific heart and torso geometries [2]. ECGI is also known as the inverse problem of electrocardiography: since the problem is ill-posed, it does not have a unique solution, making each proposed solution unstable. Solutions to the problem can vastly differ with even the slightest noise or disturbance in the electrical and/or geometric input data [2]–[6]. Several solutions have been proposed for the inverse problem of electrocardiography, for example using ECG signal processing methods [4], [7], single/multi-layer approaches [2], [8], and machine learning [9]–[11]. One of the most common techniques used in practice, however, is still Tikhonov regularization [5], [6], [12], [13]. Despite the great number of approaches proposed, finding stable solutions for the inverse problem of electrocardiography remains, at the time of writing, an open problem.

In this work we propose a novel approach to tackling this problem, where a fixed solution of the volume conductor model with a source in a forward scheme is used to solve the inverse problem of electrocardiography. The unknown values for the parameters of the fixed solution are found using optimization techniques. Due to the characteristics of

¹https://www.who.int/health-topics/cardiovascular-diseases#tab=tab_1

the problem, where each single evaluation of the cost function is computationally expensive, we use a specialized CMA-ES-based Bayesian optimization technique, that can deliver good results even with a reduced number of function evaluations. Bayesian optimization already has a considerable number of success stories, when applied to medical issues such as assigning personalized dose to patients [14], individualized treatment rules [15], regenerative medicine [16], and deep brain stimulation [17], [18], among many others. The results obtained using Bayesian optimization were the motivation to use it as an alternative solution in the inverse problem of electrocardiography. An experimental evaluation shows that the proposed approach can deliver excellent results for benchmarks where traditional approaches fail.

II. BACKGROUND

In the following, we provide the reader with the minimal notions related to the inverse problem in electrocardiography and Bayesian optimization that are necessary to introduce the scope of the work.

A. Inverse problem in electrocardiography

Electrocardiography (ECG) is defined as the interpretation of the potentials recorded at the body's surface, typically using AgCl electrodes: the objective is to obtain a qualitative and quantitative representation of the electrical activity of the heart.

To achieve this objective, solutions to the so-called forward and inverse problems in ECG must be sought. The forward problem in ECG consists of calculating the potential distribution at the surface of the thorax (∂T) due to the electrical activity on the heart's surface (∂H) [3], whereas the inverse problem is to reconstruct the electrical activity in the epicardium ∂H from the measured electrical activity at the thorax ∂T [2], [4].

The inverse problem of electrocardiography is considered an ill-posed problem [3], with no unique solution [19]. In the inverse problem of electrocardiography, elements such as perturbation in the electrical and/or geometrical input data, even in small amounts, can lead to errors that negatively affect the accuracy of the reconstructed cardiac activity, making it unstable and highly oscillatory [2]–[4]. To solve this ill-posed problem, it is necessary to regularize the procedure to obtain physical and physiological results. These regularization techniques could facilitate the inversion by restricting the possible types of solutions using implicit constraints, such as electrical activity of the heart and/or body-surface potentials, which cause the model parameters to be uniquely computed from surface potentials [3], [20]. Some examples of the mentioned models are a multipolar array, one or two moving dipoles, multiple fixed location dipoles, the epicardial potential distribution, and isochrones of activation at the surface of the heart [3]. The most common regularization technique used in the inverse problem of electrocardiography is Tikhonov regularization: this technique seeks to achieve a good balance between the adjustment to the measures and *a priori* information about the solution [5], [13], [20]. Previous works focused

on using two-step algorithms with genetic programming [21] and particle swarm optimization [22], but these approaches require a considerable amount of function evaluations, which explode in number as the geometry becomes more dense. While effective on benchmarks, such approaches cannot be applied to real cases, where the number of evaluations they require would be impractical to perform, given the timeliness required by the application. Techniques that use a smaller amount of function evaluations, such as Bayesian optimization, could thus be more suitable for real-world applications.

B. Inverse Problem Formulation

From the geometry of the model, and the boundary conditions of null flux and measured potential at the thorax's surface, we construct an operator considering the following model, using the Finite Element Method (FEM) [23]:

$$\begin{cases} -\nabla \cdot (c\nabla u) = 0 & x \in H, \\ u = u_t & x \text{ on } \partial T, \\ \frac{\partial u}{\partial n} = 0 & x \text{ on } \partial T. \end{cases} \quad (1)$$

This formulation translates to a set of equations, where h , v and t denote nodes in the heart, volume (between heart and thorax), and thorax, respectively:

$$\begin{bmatrix} A_{hh} & A_{hv} & A_{ht} \\ A_{vh} & A_{vv} & A_{vt} \\ A_{th} & A_{tv} & A_{tt} \end{bmatrix} \begin{bmatrix} u_h \\ u_v \\ u_t \end{bmatrix} = \begin{bmatrix} 0 \\ 0 \\ 0 \end{bmatrix}. \quad (2)$$

Considering no overlapping nodes between the heart and the thorax, we can simplify the system to:

$$\begin{bmatrix} A_{vh} & A_{vv} & A_{vt} \\ 0 & A_{tv} & A_{tt} \end{bmatrix} \begin{bmatrix} u_h \\ u_v \\ u_t \end{bmatrix} = \begin{bmatrix} 0 \\ 0 \\ 0 \end{bmatrix}. \quad (3)$$

If we solve for u_h , then we can create operator O :

$$O = (A_{tt} - A_{tv}A_{vv}^{-1}A_{vt})^{-1}A_{tv}A_{vv}^{-1}A_{vh}, \quad (4)$$

$$Ou_h = u_t. \quad (5)$$

As mentioned, a classical approach to the solution of the inverse problem is to use Tikhonov regularization. Tikhonov regularization, considers the following functional:

$$\min(\|Ou_h - u_t\|^2 + \lambda\|C(u_h - u'_h)\|^2) \quad (6)$$

$$\lambda > 0$$

We applied the functional in the following form [24]:

$$u_h = [O^T O + \lambda C^T C]^{-1} [O^T u_T + \lambda C^T C u'_h], \quad (7)$$

where C is a constrained matrix. In our case we use the identity matrix ($C = I$) and set $\lambda = 0.001$.

C. Bayesian optimization

Machine learning algorithms often have several hyper-parameters that directly influence performance [25]. Hence, in recent years, different optimization algorithms have been proposed to automate parameter tuning, such as grid search, random search [26] or evolutionary algorithms [27], [28]. Although capable of achieving excellent results, these techniques typically require considerable computational effort to achieve such results, in particular due to the necessity of performing many function evaluations [29].

An alternative to these algorithms are optimization techniques that are designed to get high-quality results using only few function evaluations [25], [30]–[32]. Such algorithms are well-suited for problems where using only few evaluations is critical, for example robotics and machine learning [33]–[36]. A type of expensive optimization is Bayesian optimization. Bayesian optimization has two components: First, apply a Gaussian Process (GP) to the data as a prior probability distribution to infer values. This is known as Gaussian Process Regression. Next, use an acquisition function to evaluate those values and select the next point to evaluate [37], [38]. In this context, each time we modify a hyper-parameter in the algorithm, we consider the result as a sample from the GP. Using the GP as a surrogate model allows us to evaluate a simplified function in comparison to the original.

The acquisition function is described by a covariance matrix (or kernel), a mean, a variance, and the information already gathered on the model. To optimize the acquisition function, either a gradient-based algorithm technique like DIRECT in the BayesOpt library [39], or a global non-linear optimizer such as the evolution strategy with covariance matrix adaptation (CMA-ES) [40], [41] in the Limbo library [42] may be used.

In Bayesian optimization, we will have a set of observed samples $(x_0, y_0), (x_1, y_1), \dots, (x_n, y_n)$ where $y_i = f(x_i)$, X is the vector of inputs, and y the vector of outputs. The objective will be to predict the next point x^* that maximizes the acquisition function,

$$x^* = \operatorname{argmax} f(x). \quad (8)$$

Using a GP the predicted mean $\mu(x_*)$ and predicted variance $\sigma(x_*)$ of the point x_* are given by ([38], [43]):

$$\begin{aligned} \mu(x_*) &= k_*^T (K + \sigma_{noise}^2 I)^{-1} y \\ \sigma^2(x_*) &= k(x_*, x_*) - k_*^T (K + \sigma_{noise}^2 I)^{-1} k_* \end{aligned} \quad (9)$$

where $K = K(X, X)$ denotes the covariance matrix computed for each pair of observed inputs, σ_{noise}^2 is the noise level, I the identity matrix, k_* is the vector of covariances between the test point x_* and each of the n observed inputs. Examples of covariance functions include the exponential kernel (Eq. 11) and the Matérn 5/2 (Eq. 12) [37]:

$$K_{sq-exp}(x, x') = \theta_0^2 \exp(-\frac{1}{2}r^2) \quad (11)$$

$$K_{M52}(x, x') = \theta_0^2 \exp(-\sqrt{5}r)(1 + \sqrt{5}r + \frac{5}{3}r^2) \quad (12)$$

with r given by:

$$r^2 = \sum_{d=1}^D \theta_d^2 (x_d - x'_d)^2 \quad (13)$$

with $\theta_d \in [0,1]$ (parameterized) [31]. The values of θ_i are estimated by the log marginal likelihood,

$$\log P(y|x, \theta) = -\frac{1}{2} \log |K| - \frac{1}{2} y^T K^{-1} y - \frac{N}{2} \log 2\pi. \quad (14)$$

which gives a measure of how well the model adjusts to the data [38]. The log marginal likelihood is usually calculated using gradient methods [43], such as the LBFGS-B [44].

With a given covariance function k , a set of inputs X , a set of outputs y , and a σ_{noise}^2 noise level, we can optimize an acquisition function, such as an upper confidence bound (UCB) [31], [45]:

$$UCB(x) = \mu(x_*) + \kappa \sigma(x_*), \quad (15)$$

where κ is a parameter to tune the exploration-exploitation trade-off. The overall algorithm is summarized in Alg. 1.

Algorithm 1: Bayesian optimization algorithm.

```

Create  $n$  random initial points ;
for Number of Evaluations do
    Optimize  $\log P(y|x, \theta)$ ;
    Optimize acquisition function ;
    Evaluate selected point  $x_*$  in the original function
    ;
    Update sets  $X, y$  ;

```

III. PROPOSED APPROACH

In the inverse problem in electrocardiography, we considered the system in a quasi-static approach, thus each time step is solved independently [23]. We propose to tackle the IPE by applying Bayesian optimization, and speed up the computation by selecting only a subset of points of fixed size, including the ones with the best values obtained up to that moment. From Eq. 7, we have u'_h , that is considered as *a priori* information. Using the model for Multiple Dipole Source Position from [46], we modified to use it as a basis for cardiac sources.

$$u'_{hi} = \frac{1}{4\pi\zeta} \begin{bmatrix} s_0 & s_1 \end{bmatrix} \begin{bmatrix} \frac{N_x - u_{0x}}{r^3} & \frac{N_y - u_{0y}}{r^3} & \frac{N_z - u_{0z}}{r^3} \\ \frac{N_x - u_{1x}}{r^3} & \frac{N_y - u_{1y}}{r^3} & \frac{N_z - u_{1z}}{r^3} \end{bmatrix} \begin{bmatrix} v_x \\ v_y \\ v_z \end{bmatrix} \quad (16)$$

Thus, this would translate to identifying the values of 12 parameters $(\zeta, s_0, s_1, u_{0x}, u_{0y}, u_{0z}, u_{1x}, u_{1y}, u_{1z}, v_x, v_y, v_z)$, where ζ is the conductivity, s_0 is the dipole signal strength of dipole 0, s_1 is the dipole signal strength of dipole 1, u_{0x}, u_{0y}, u_{0z} is the dipole 0 position, u_{1x}, u_{1y}, u_{1z} is the dipole 1 position, v_x, v_y, v_z is the unit vector denoting the orientation of the dipole, and N_x, N_y, N_z are the position on the heart's surface at each point.

Then, having calculated u'_h as *a priori* information, we will solve the original functional in Eq. 7 for each time step (Alg. 2).

Algorithm 2: Bayesian optimization algorithm for the inverse problem in electrocardiography.

```

for Each Time Step do
  Create  $n$  random initial points to evaluate a source
  model equation;
  Generate  $n$  initial  $u_h$  and  $u_t$ ;
  for Number of Evaluations do
    Optimize  $\log P(y|x, \theta)$ ;
    Optimize acquisition function ;
    Evaluate selected point  $x_*$  in the source model equation
    ;
    Generate  $u_h$  and  $u_t$  ;
    Update sets  $X, y$  ;
  Solve Functional
   $\min(\|Ou_h - u_t\|^2 + \lambda\|C(u_h - u'_h)\|^2)$ ;

```

IV. RESULTS

We performed two experiments: one using simulated data with geometries from [47] and a monodomain model [23], [48] with a one-point source (Experiment 1), and a second one using real-world data from a Langendorf-perfused canine heart [49], [50] (Experiment 2). For Experiment 2, we modified the torso geometry to make it a close surface using Laplacian interpolation, as the provided geometry was non-compliant with the volume conductor model. Then, for both experiments, we generated the transfer matrix using the Garlekin boundary element method [51]. The coupled geometries of heart and torso are displayed in Fig. 1.

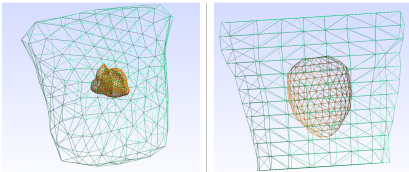


Fig. 1. Geometries used for the experiments. (Left) geometry of human torso and thorax for Experiment 1. (Right) Geometry of torso tank and heart cage for Experiment 2.

A. Experiment 1

For this experiment, we used a geometry of the thorax with 300 nodes, and 1,444 nodes on the heart’s surface. First, using the Monodomain model we put an impulse in the left ventricle. Next, we propagate the extracellular potential to the thorax (electrocardiography forward problem) for 200 time steps (Fig.2). Then, using Tikhonov regularization ($\lambda = 0.001$), we reconstruct the extracellular potential in the heart’s surface from the thorax’ potential (electrocardiography inverse problem), using only the Tikhonov functional and the Bayesian Optimization with a source model, as seen in Fig. 3.

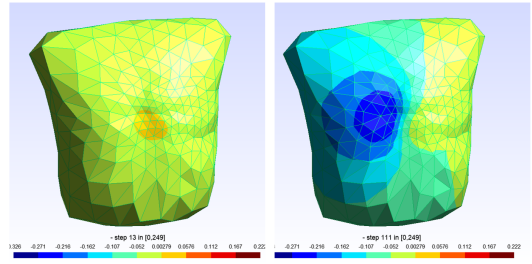


Fig. 2. Thorax simulated potentials at time steps 13 and 111, using the Monodomain Model with a laplace coupling with BEM.

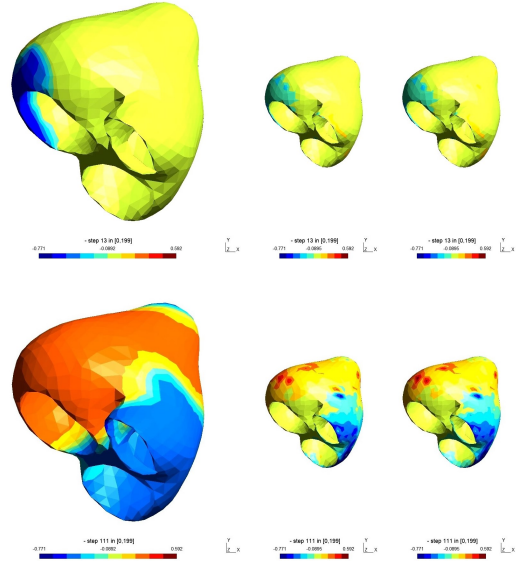


Fig. 3. Measurements of electrical activity in the heart’s surface using the Monodomain (Left), reconstruction with Tikhonov only (middle) and reconstruction using Bayesian Optimization (right), for time steps 13 and 111.

B. Experiment 2

In this experiment we have the real-world recordings from a Langendorf-perfused canine heart, for both the thorax’ surface and the cardiac cage. Thus, for this case we will close the geometry and interpolate the values in the thorax (Fig. 4) with a Laplace interpolation (229 nodes), and then try to reconstruct the activity measured by the cardiac cage (256 nodes). The activity in the heart is described by an anterior ventricular paced beat (avp) for 220 time steps. First, we build the transfer matrix, or operator using the Garlekin boundary element method. Then, we apply the Tikhonov functional and Bayesian Optimization with a source model and compare it to the actual recordings, as summarized by Fig. 5.

Finally, from the final results and knowing the ground truth, we can compute the error for the two approaches (Table I). The error is defined as:

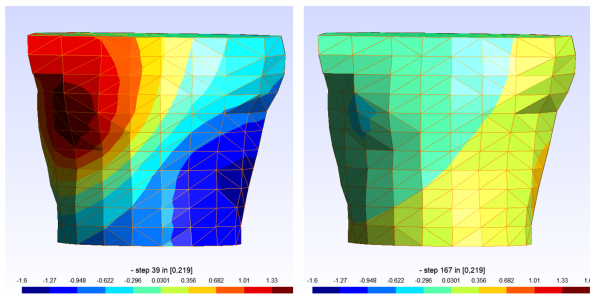


Fig. 4. Interpolated activity of the thorax (torso tank) for time steps 39 and 167.

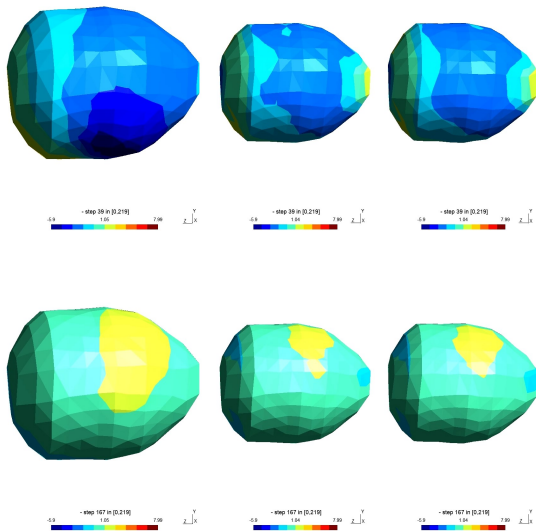


Fig. 5. Measurements of electrical activity in the cardiac cage (Left), reconstruction with Tikhonov only (middle) and reconstruction using Bayesian Optimization (right), for time step 39 and 167.

$$error = \frac{\sum_i^{nodes} \sum_j^{t_{total}} (u_h - u_{sim})_{i,j}^2}{\sum_i^{nodes} \sum_j^{t_{total}} (u_h)_{i,j}^2}, \quad (17)$$

TABLE I
SUMMARY OF ERROR IN THE 2 DIFFERENT EXPERIMENTS.

	Experiment 1	Experiment 2
Tikhonov	0.7157	0.3442
BO + Tikhonov	0.6881	0.3352

It is interesting to notice that the numerical value of the error depends on the number of nodes in the geometry, so error values reported for Experiment 1 (using a geometry with 1,444 nodes) and Experiment 2 (256 nodes) are not directly comparable. Still, the proposed approach outperforms the classic Tikhonov method for both experimental configurations. As the objective of solving the inverse problem is to find sources of

arrhythmia in the heart without invasive surgery, rule out acute myocardial infarction, or the extent of cardiomyopathy, even small gains in the error correspond to significant improvements from the point of view of patients' safety and comfort.

V. CONCLUSION

In this work, we presented a novel CMA-ES-based Bayesian optimization approach for solving the inverse problem in electrocardiography, a difficult ill-posed problem with unstable solutions but invaluable practical applications for medicine. Compared to previously proposed techniques, the presented algorithm requires fewer function evaluations to achieve the same quality of results, thus being more applicable to real-world scenarios. In addition, the given approach makes it possible to solve each time step independently, thus it can be efficiently parallelized. Simulated and real world data experiments show that the approach is not only faster, but provides better results than established techniques such as Tikhonov regularization.

Although further testing and validation are necessary, this approach could represent a step in the right direction to solve the inverse problem in electrocardiography in real time and with a better precision than the classical Tikhonov regularization. As of now, we have only used a source generation model, but next experiments will focus on using different functions that can approximate the electrical activity and the parameters can be found via Bayesian optimization as shown and more real data-based experiments. Finally, we expect to test further our methodology with other datasets available in the EDGAR repository [49].

ACKNOWLEDGMENT

This work is partly funded by the PlaqaAI project from the EWUU Alliance as part of the AI for Health Call.

REFERENCES

- [1] M. U. Khan, S. Aziz, K. Iqtidar, and R. Fernandez-Rojas, "Computer-aided diagnosis system for cardiac disorders using variational mode decomposition and novel cepstral quinary patterns," *Biomedical Signal Processing and Control*, vol. 81, p. 104509, 2023.
- [2] A. Kalinin, D. Potyagaylo, and V. Kalinin, "Solving the inverse problem of electrocardiography on the endocardium using a single layer source," *Frontiers in physiology*, vol. 10, no. 58, 2019.
- [3] R. M. Gulrajani, "The forward and inverse problems of electrocardiography," *IEEE Engineering in Medicine and Biology Magazine*, vol. 17, no. 5, pp. 84–101, 1998.
- [4] L. Bear, Y. S. Dogrusoz, J. Svehlikova, J. Coll-Font, W. Good, E. van Dam, R. S. Macleod, E. Abell, R. D. Walton, R. Coronel, M. Haissaguerre, and R. Dubois, "Effects of eeg signal processing on the inverse problem of electrocardiography," in *In 2018 Computing in Cardiology Conference (CinC)*, IEEE, Sept. 2018.
- [5] A. M. Gavgani and Y. S. Dogrusoz, "Use of genetic algorithm for selection of regularization parameters in multiple constraint inverse eeg problem," in *2011 Annual International Conference of the IEEE Engineering in Medicine and Biology Society*, pp. 985–988, IEEE, 2011.
- [6] M. J. Cluitmans, M. Clerx, N. Vandersickel, R. L. Peeters, P. G. Volders, and R. L. Westra, "Physiology-based regularization of the electrocardiographic inverse problem," *Medical & biological engineering & computing*, vol. 55, pp. 1353–1365, 2017.
- [7] A. S. Rababah, L. R. Bear, Y. S. Dogrusoz, W. Good, J. Bergquist, J. Stoks, R. MacLeod, K. Rjoob, M. Jennings, J. McLaughlin, *et al.*, "The effect of interpolating low amplitude leads on the inverse reconstruction of cardiac electrical activity," *Computers in biology and medicine*, vol. 136, p. 104666, 2021.

- [8] B. M. Horáček and J. C. Clements, "The inverse problem of electrocardiography: A solution in terms of single-and double-layer sources on the epicardial surface," *Mathematical biosciences*, vol. 144, no. 2, pp. 119–154, 1997.
- [9] A. Malik, T. Peng, and M. L. Trew, "A machine learning approach to reconstruction of heart surface potentials from body surface potentials," in *2018 40th Annual International Conference of the IEEE Engineering in Medicine and Biology Society (EMBC)*, pp. 4828–4831, IEEE, 2018.
- [10] B. Wood and P. Briesch, *Deep learning the inverse problem of electrocardiography*. The University of Auckland, 2021.
- [11] T. Peng, A. Malik, L. R. Bear, and M. L. Trew, "Impulse data models for the inverse problem of electrocardiography," *IEEE Journal of Biomedical and Health Informatics*, vol. 26, no. 3, pp. 1353–1361, 2021.
- [12] W. Schulze, D. Farina, Y. Jiang, and O. Dössel, "A kalman filter with integrated tikhonov-regularization to solve the inverse problem of electrocardiography," in *World Congress on Medical Physics and Biomedical Engineering, September 7-12, 2009, Munich, Germany: Vol. 25/2 Diagnostic Imaging*, pp. 821–824, Springer, 2009.
- [13] A. Karoui, L. Bear, P. Migerditichan, and N. Zemzemi, "Evaluation of fifteen algorithms for the resolution of the electrocardiography imaging inverse problem using ex-vivo and in-silico data," *Frontiers in physiology*, vol. 9, p. 1708, 2018.
- [14] D. Krishnamoorthy and F. J. Doyle III, "Personalized dose guidance using safe bayesian optimization," *arXiv preprint arXiv:2210.16944*, 2022.
- [15] Y. Zhao, D. Zeng, A. J. Rush, and M. R. Kosorok, "Estimating individualized treatment rules using outcome weighted learning," *Journal of the American Statistical Association*, vol. 107, no. 499, pp. 1106–1118, 2012.
- [16] M. Mehrian, Y. Guyot, I. Papantoniou, S. Olofsson, M. Sonnaert, R. Misener, and L. Geris, "Maximizing neotissue growth kinetics in a perfusion bioreactor: an in silico strategy using model reduction and bayesian optimization," *Biotechnology and bioengineering*, vol. 115, no. 3, pp. 617–629, 2018.
- [17] M. J. Connolly, E. R. Cole, F. Isbaine, C. De Hemptinne, P. A. Starr, J. T. Willie, R. E. Gross, and S. Miocinovic, "Multi-objective data-driven optimization for improving deep brain stimulation in parkinson's disease," *Journal of neural engineering*, vol. 18, no. 4, p. 046046, 2021.
- [18] K. H. Louie, M. N. Petrucci, L. L. Grado, C. Lu, P. J. Tuite, A. G. Lamperski, C. D. MacKinnon, S. E. Cooper, and T. I. Netoff, "Semi-automated approaches to optimize deep brain stimulation parameters in parkinson's disease," *Journal of NeuroEngineering and Rehabilitation*, vol. 18, no. 1, p. 83, 2021.
- [19] S. I. Kabanikhin, *Definitions and examples of inverse and ill-posed problems*. Walter de Gruyter GmbH & Co. KG, 2008.
- [20] B. J. Messinger-Rapport and Y. Rudy, "Regularization of the inverse problem in electrocardiography: A model study," *Mathematical Biosciences*, vol. 89, no. 1, pp. 79–118, 1988.
- [21] A. Lopez Rincon, M. Bendahmane, and B. Ainseba, "Two-step genetic algorithm to solve the inverse problem in electrocardiography for cardiac sources," *Computer Methods in Biomechanics and Biomedical Engineering: Imaging & Visualization*, vol. 2, no. 3, pp. 129–137, 2014.
- [22] A. Lopez, M. Cienfuegos, B. Ainseba, and M. Bendahmane, "Pso with tikhonov regularization for the inverse problem in electrocardiography," in *Artificial Evolution: 11th International Conference, Evolution Artificielle, EA 2013, Bordeaux, France, October 21-23, 2013. Revised Selected Papers 11*, pp. 256–270, Springer, 2014.
- [23] J. Sundnes, G. T. Lines, X. Cai, B. F. Nielsen, K.-A. Mardal, and A. Tveito, *Computing the electrical activity in the heart*, vol. 1. Springer Science & Business Media, 2007.
- [24] C. R. Johnson, "Adaptive finite element and local regularization methods for the inverse eeg problem," *Inverse Problems in Electrocardiology*, pp. 51–88, 2001.
- [25] I. Goodfellow, Y. Bengio, and A. Courville, *Deep Learning*. MIT Press, 2016.
- [26] J. Bergstra and Y. Bengio, "Random search for hyper-parameter optimization," *Journal of Machine Learning Research*, vol. 13, no. Feb, pp. 281–305, 2012.
- [27] A. L. Rincon, A. Tonda, M. Elati, O. Schwander, B. Piwowski, and P. Gallinari, "Evolutionary optimization of convolutional neural networks for cancer miRNA biomarkers classification," *Applied Soft Computing*, pp. 91–100, 2018.
- [28] S. R. Young, D. C. Rose, T. P. Karnowski, S.-H. Lim, and R. M. Patton, "Optimizing deep learning hyper-parameters through an evolutionary algorithm," in *Proceedings of the Workshop on Machine Learning in High-Performance Computing Environments*, p. 4, ACM, 2015.
- [29] P. Murugan, "Hyperparameters optimization in deep convolutional neural network/bayesian approach with gaussian process prior," *arXiv preprint arXiv:1712.07233*, 2017.
- [30] J. S. Bergstra, R. Bardenet, Y. Bengio, and B. Kégl, "Algorithms for hyper-parameter optimization," in *Advances in neural information processing systems*, pp. 2546–2554, 2011.
- [31] J. Snoek, H. Larochelle, and R. P. Adams, "Practical bayesian optimization of machine learning algorithms," in *Advances in neural information processing systems*, vol. 25, pp. 2951–2959, 2012.
- [32] M. Hoffman, B. Shahriari, and N. Freitas, "On correlation and budget constraints in model-based bandit optimization with application to automatic machine learning," in *Artificial Intelligence and Statistics*, pp. 365–374, 2014.
- [33] K. Chatzilygeroudis and J.-B. Mouret, "Using parameterized black-box priors to scale up model-based policy search for robotics," *arXiv preprint arXiv:1709.06917*, 2017.
- [34] R. Pautrat, K. Chatzilygeroudis, and J.-B. Mouret, "Bayesian optimization with automatic prior selection for data-efficient direct policy search," *arXiv preprint arXiv:1709.06919*, 2017.
- [35] K. Chatzilygeroudis, V. Vassiliades, and J.-B. Mouret, "Reset-free trial-and-error learning for robot damage recovery," *Robotics and Autonomous Systems*, vol. 100, pp. 236–250, 2018.
- [36] A. Cully, J. Clune, D. Tarapore, and J.-B. Mouret, "Robots that can adapt like animals," *Nature*, vol. 521, no. 7553, p. 503, 2015.
- [37] B. Shahriari, K. Swersky, Z. Wang, R. P. Adams, and N. de Freitas, "Taking the human out of the loop: A review of bayesian optimization," *Proceedings of the IEEE*, vol. 104, no. 1, pp. 148–175, 2016.
- [38] C. E. Rasmussen and C. K. Williams, *Gaussian processes for machine learning*, vol. 1. MIT press Cambridge, 2006.
- [39] R. Martinez-Cantin, "Bayesopt: A bayesian optimization library for nonlinear optimization, experimental design and bandits," *The Journal of Machine Learning Research*, vol. 15, no. 1, pp. 3735–3739, 2014.
- [40] N. Hansen and A. Ostermeier, "Completely derandomized self-adaptation in evolution strategies," *Evolutionary computation*, vol. 9, no. 2, pp. 159–195, 2001.
- [41] N. Hansen, S. D. Müller, and P. Koumoutsakos, "Reducing the time complexity of the derandomized evolution strategy with covariance matrix adaptation (cma-es)," *Evolutionary computation*, vol. 11, no. 1, pp. 1–18, 2003.
- [42] A. Cully, K. Chatzilygeroudis, F. Allocati, and J.-B. Mouret, "Limbo: A fast and flexible library for bayesian optimization," *arXiv preprint arXiv:1611.07343*, 2016.
- [43] E. Schulz, M. Speekenbrink, and A. Krause, "A tutorial on gaussian process regression with a focus on exploration-exploitation scenarios," *bioRxiv*, p. 095190, 2017.
- [44] R. Fletcher, *Practical methods of optimization*. John Wiley & Sons, 2013.
- [45] E. Brochu, V. M. Cora, and N. De Freitas, "A tutorial on bayesian optimization of expensive cost functions, with application to active user modeling and hierarchical reinforcement learning," *arXiv preprint arXiv:1012.2599*, 2010.
- [46] S. Namazifard and K. Subbarao, "Multiple dipole source position and orientation estimation using non-invasive eeg-like signals," *Sensors*, vol. 23, no. 5, p. 2855, 2023.
- [47] A. Van Oosterom and T. Oostendorp, "EcgSim: an interactive tool for studying the genesis of qrst waveforms," *Heart*, vol. 90, no. 2, pp. 165–168, 2004.
- [48] A. Lopez-Rincon, M. Bendahmane, and B. Ainseba, "On 3d numerical inverse problems for the bidomain model in electrocardiology," *Computers & Mathematics with Applications*, vol. 69, no. 4, pp. 255–274, 2015.
- [49] K. Aras, W. Good, J. Tate, B. Burton, D. Brooks, J. Coll-Font, O. Doesel, W. Schulze, D. Potyagaylo, L. Wang, et al., "Experimental data and geometric analysis repository—edgar," *Journal of electrocardiology*, vol. 48, no. 6, pp. 975–981, 2015.
- [50] J. A. Bergquist, W. W. Good, B. Zenger, J. D. Tate, L. C. Rupp, and R. S. MacLeod, "The electrocardiographic forward problem: A benchmark study," *Computers in biology and medicine*, vol. 134, p. 104476, 2021.
- [51] S. N. Fata, "Explicit expressions for three-dimensional boundary integrals in linear elasticity," *Journal of computational and applied mathematics*, vol. 235, no. 15, pp. 4480–4495, 2011.