



HAL
open science

Acoustic waveguide with a dissipative inclusion

Lucas Chesnel, Jérémy Heleine, Sergei A Nazarov, Jari Taskinen

► **To cite this version:**

Lucas Chesnel, Jérémy Heleine, Sergei A Nazarov, Jari Taskinen. Acoustic waveguide with a dissipative inclusion. 2023. hal-04357144v2

HAL Id: hal-04357144

<https://hal.science/hal-04357144v2>

Preprint submitted on 21 May 2023 (v2), last revised 20 Dec 2023 (v3)

HAL is a multi-disciplinary open access archive for the deposit and dissemination of scientific research documents, whether they are published or not. The documents may come from teaching and research institutions in France or abroad, or from public or private research centers.

L'archive ouverte pluridisciplinaire **HAL**, est destinée au dépôt et à la diffusion de documents scientifiques de niveau recherche, publiés ou non, émanant des établissements d'enseignement et de recherche français ou étrangers, des laboratoires publics ou privés.

Acoustic waveguide with a dissipative inclusion

LUCAS CHESNEL¹, JÉRÉMY HELEINE², SERGEI A. NAZAROV³, JARI TASKINEN⁴

¹ Inria, Ensta Paris, Institut Polytechnique de Paris, 828 Boulevard des Maréchaux, 91762 Palaiseau, France;

² Institut de Mathématiques de Toulouse CNRS UMR 5219, Université Paul Sabatier, F-31062 Toulouse Cedex 9, France;

³ Institute of Problems of Mechanical Engineering RAS, V.O., Bolshoi pr., 61, St. Petersburg, 199178, Russia;

⁴ Department of Mathematics and Statistics, University of Helsinki, P.O.Box 68, FI-00014 Helsinki, Finland.

E-mails: lucas.chesnel@inria.fr, jeremy.heleine@math.univ-toulouse.fr, srgnazarov@yahoo.co.uk, jari.taskinen@helsinki.fi

(May 21, 2023)

Abstract. We consider the propagation of acoustic waves in a waveguide containing a penetrable dissipative inclusion. We prove that as soon as the dissipation, characterized by some coefficient η , is non zero, the scattering solutions are uniquely defined. Additionally, we give an asymptotic expansion of the corresponding scattering matrix when $\eta \rightarrow 0^+$ (small dissipation) and when $\eta \rightarrow +\infty$ (large dissipation). Surprisingly, at the limit $\eta \rightarrow +\infty$, we show that no energy is absorbed by the inclusion. This is due to the so-called skin-effect phenomenon and can be explained by the fact that the field no longer penetrates into the highly dissipative inclusion. These results guarantee that in monomode regime, the amplitude of the reflection coefficient has a global minimum with respect to η . The situation where this minimum is zero, that is when the device acts as a perfect absorber, is particularly interesting for certain applications. However it does not happen in general. In this work, we show how to perturb the geometry of the waveguide to create 2D perfect absorbers in monomode regime. Asymptotic expansions are justified by error estimates and theoretical results are supported by numerical illustrations.

Key words. Acoustic waveguide, dissipation, perfect absorber, asymptotic analysis, scattering matrix, boundary layer phenomenon.

1 Introduction

We are interested in the propagation of acoustic waves in a waveguide of \mathbb{R}^d unbounded in one direction and which contains a bounded penetrable inclusion made of a dissipative material as represented in Figure 1. Generally speaking, an incident wave propagating in such a structure gives rise to a scattered field so that a part of the incoming energy is scattered at infinity while the other part is dissipated in the inclusion (see the identity (18)). The original motivation for this study comes from the design of perfect absorbers also known as Coherent Perfect Absorbers (CPA) or time-reversed lasers [13, 27, 42]. These are particular configurations where all the energy of the incident field is dissipated in the inclusion. Numerical and experimental strategies to construct such perfect absorbers have been proposed in the physical community, for example in [13, 32, 40, 24, 43] (see also references therein).

In this article, we wish to consider the mathematical properties of the corresponding problem. The first goal of this work is to prove that the scattering solutions are well-defined for the problem (1) below with the dissipation characterized by the parameter η and to prove results concerning the corresponding scattering matrix \mathbb{S}^η . More precisely we will establish that \mathbb{S}^η is symmetric for all

$\eta \in [0; +\infty)$. However \mathbb{S}^η is unitary only for $\eta = 0$, that is when there is no dissipation. This is directly related to the fact that for $\eta > 0$, some energy is dissipated in the inclusion. In order to get a perfect absorber, a natural idea might be to work with a large value of η , that is with what one might think be a very dissipative inclusion. However we will see that this is a wrong intuition because when η tends to $+\infty$, the dissipative inclusion behaves like a sound soft obstacle. As a consequence, \mathbb{S}^η converges to a unitary matrix and not to the zero matrix (what we would like to obtain a perfect absorber).

Below we compute an asymptotic expansion of the scattering solution u^η when η tends to zero (this is a rather direct result) and when η tends to $+\infty$ (this is the first main result of the paper). From this, we derive the desired expansions of \mathbb{S}^η . Let us mention that when η goes to $+\infty$, the field tends to zero inside the inclusion and becomes localized at its boundary. In other words, a boundary layer phenomenon appears, this is the so-called skin-effect. In order to capture it, it is necessary to work with an adapted structure for the asymptotic expansion. Such problems have already been studied in the literature (see [41, 33, 6]) and here we adapt existing techniques to our case. Very close to our topic, let us mention the article [19] (see also the related works [20, 16, 21, 4]). There the authors consider a problem similar to ours but set in a bounded domain with an impedance boundary condition which can be seen as a low order approximation of the Sommerfeld radiation condition in freespace. They propose and justify asymptotic models for highly dissipative inclusions. Their justifications mainly rely on proofs by contradiction. We will proceed a bit differently by giving a direct demonstration of the essential stability estimate of Theorem 6.1. Moreover, we will focus our attention on a waveguide problem and describe in detail consequences for the scattering matrix.

The second main outcome of this article is the justification of a method to create perfect absorbers in monomode regime. In this regime, \mathbb{S}^η is simply a complex number (reflection coefficient). As we will see, for a given geometry, studying the behaviour of $\eta \mapsto \mathbb{S}^\eta$ is not sufficient because in general $\eta \mapsto \mathbb{S}^\eta$ does not go through zero. What we will show is how, for any fixed parameter $\eta > 0$, to modify the shape of the waveguide to get a reflection coefficient equal to zero.

The outline is as follows. In Section 2, we start by presenting the setting. Then we prove results concerning the well-posedness of the scattering problem and establish some properties of the corresponding scattering matrix. Section 4 is dedicated to the derivation of an expansion of \mathbb{S}^η as η tends to zero (small dissipation). Then in Section 5, we give the formal procedure to compute an expansion of \mathbb{S}^η when η tends to $+\infty$. In Section 6, we prove an error estimate to justify the latter expansion. Possible generalizations and open questions are discussed in Section 7 while numerical illustrations of the results are presented in Section 8. In Section 9, we propose a strategy to construct 2D perfect absorbers in monomode regime by modifying the shape of the waveguide. Finally, in Section 10, we establish an important stability estimate which is the crucial ingredient of the justification of the asymptotic expansion of \mathbb{S}^η for large values of η . This is the most technical part of the work. The main results of this article are Theorem 4.1 (asymptotic of \mathbb{S}^η for small η), Theorem 5.1 (asymptotic of \mathbb{S}^η for large η) and the strategies of Section 9 to design perfect absorbers.

2 Problem setting

Let $\Omega := \mathcal{R} \cup \Pi$ be an acoustic waveguide of \mathbb{R}^d , $d \geq 2$, made of the bounded resonator $\mathcal{R} \subset \mathbb{R}^d := \{x = (x_1, \dots, x_d) \in \mathbb{R}^d \mid x_d < 0\}$ and of the half-cylinder $\Pi := \omega \times [0; +\infty)$ with bounded cross section $\omega \subset \mathbb{R}^{d-1}$ (see Figure 1). We assume that \mathcal{R}, Π are such that Ω is connected and that its boundary $\partial\Omega$ is Lipschitz. To model the dissipative inclusion, introduce \mathcal{O} a non empty open set with smooth boundary such that $\overline{\mathcal{O}} \subset \mathcal{R}$ and $b \in \mathcal{C}^\infty(\overline{\mathcal{O}})$ a positive function that we extend by zero in $\Omega \setminus \overline{\mathcal{O}}$. We consider the Neumann boundary value problem

$$\begin{cases} \Delta_x u^\eta + \lambda(1 + i\eta b)u^\eta = 0 & \text{in } \Omega \\ \partial_n u^\eta = 0 & \text{on } \partial\Omega, \end{cases} \quad (1)$$

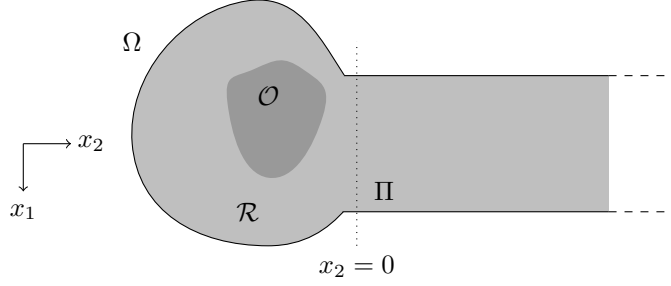


Figure 1: Example of waveguide Ω in \mathbb{R}^2 .

where Δ_x is the Laplace operator, ∂_n is the outward normal derivative and $\eta \geq 0$ is a scalar parameter. In what follows, we will study the dependence of the acoustic field u^η with respect to the dissipation parameter η . In order to describe the propagation of waves in Ω , we need to define the modes of the waveguide. To provide their expressions, first we introduce the eigenvalue problem for the Neumann Laplacian in the cross section ω , namely

$$\begin{cases} -\Delta_y \varphi = \lambda \varphi & \text{in } \omega \\ \partial_\nu \varphi = 0 & \text{on } \partial\omega. \end{cases} \quad (2)$$

Here and in what follows, we use the notation $y := (x_1, \dots, x_{d-1})$, $z := x_d$. Additionally in (2), ∂_ν stands for the outward normal derivative on $\partial\omega$. We denote by λ_j the corresponding eigenvalues and choose φ_j associated eigenfunctions such that

$$\begin{aligned} 0 = \lambda_0 < \lambda_1 \leq \lambda_2 \leq \dots \leq \lambda_j \leq \dots \rightarrow +\infty, \\ (\varphi_j, \varphi_k)_\omega = \delta_{j,k}, \quad j, k \in \mathbb{N} := \{0, 1, \dots\}. \end{aligned} \quad (3)$$

Above, $\delta_{j,k}$ stands for the Kronecker symbol and $(\cdot, \cdot)_\omega$ is the natural scalar product of the Lebesgue space $L^2(\omega)$. Let us fix

$$\lambda \in (\lambda_{J-1}; \lambda_J)$$

for some $J \in \mathbb{N}^* := \{1, 2, \dots\}$. Then for $j = 0, \dots, J-1$, we define the propagating waves

$$w_j^\pm(x) = (2|\alpha_j|)^{-1/2} e^{\pm i\alpha_j z} \varphi_j(y) \quad \text{with } \alpha_j := \sqrt{\lambda - \lambda_j}. \quad (4)$$

The normalization factors in (4) are introduced so that the scattering matrix defined after (5) is unitary for $\eta = 0$. The first goal of the article is to show the existence, for any $\eta \geq 0$, of solutions to the problem (1) of the form

$$u_j^\eta = \chi w_j^- + \chi \sum_{k=0}^{J-1} s_{jk}^\eta w_k^+ + \tilde{u}_j^\eta, \quad (5)$$

where $\mathbb{S}^\eta = (s_{jk}^\eta)_{0 \leq j, k \leq J-1} \in \mathbb{C}^{J \times J}$ is the scattering matrix and the remainder \tilde{u}_j^η decay exponentially at infinity. In (5), χ is a cut-off function depending only on the z variable such that $\chi(x) = 1$ for $z \geq 1$ and $\chi(x) = 0$ for $z \leq 0$. Note that the introduction of such a χ is necessary because a priori the waves (4) are not defined in the whole Ω . Indeed nothing guarantee that the φ_j extend outside of ω to a function such that (4) still solves the homogeneous Helmholtz equation.

The second goal of the article is to investigate the dependence of the scattering matrix \mathbb{S}^η with respect to η . Classical results guarantee that for $\eta = 0$, \mathbb{S}^η is unitary and symmetric. We will derive the remarkable result that when η tends to infinity, that is when one may think that the dissipation becomes large, \mathbb{S}^η has a limit \mathbb{S}^∞ which is also unitary and symmetric. As we will see, this result is the consequence of the appearance of a skin-effect phenomenon characterized by the concentration of the field u_j^η inside the inclusion to a neighbourhood of the boundary $\partial\mathcal{O}$.

3 Solvability and definition of the scattering matrix

First, we show the existence of solutions to the problem (1) of the form (5). We could work with a Dirichlet-to-Neumann operator to bound the domain Ω to recover compactness properties and apply Fredholm theory (see e.g. [22]). Instead we choose here to work with Kondratiev, or weighted Sobolev, spaces. For $\beta \in \mathbb{R}$, define $W_\beta^1(\Omega)$ as the completion of $\mathcal{C}_0^\infty(\Omega) := \{\varphi|_\Omega, \varphi \in \mathcal{C}_0^\infty(\mathbb{R}^d)\}$ for the norm

$$\|u; W_\beta^1(\Omega)\| = \|e^{\beta z}u; H^1(\Omega)\|. \quad (6)$$

Here $\mathcal{C}_0^\infty(\mathbb{R}^d)$ denotes the set of infinitely differentiable functions of \mathbb{R}^d which are compactly supported, β is the weight index and $H^1(\Omega)$ stands for the standard Sobolev space. Clearly, we have $W_0^1(\Omega) = H^1(\Omega)$ but for $\beta > 0$, the elements of $W_\beta^1(\Omega)$ decay exponentially at infinity. Let us mention that we use this norm notation with a semicolon instead of writing it as a subscript because below we will have to deal with different parameters and it will be easier to read this way. Let us fix the weight index such that

$$\beta \in (0; \sqrt{\lambda_J - \lambda}). \quad (7)$$

In this situation, all the evanescent modes of problem (1) belong to $W_\beta^1(\Omega)$. Now following [39, Ch. 5], [37], introduce the weighted space with detached asymptotics $W^{\text{out}}(\Omega)$ consisting of functions

$$u = \chi \sum_{j=0}^{J-1} a_j w_j^+ + \tilde{u}, \quad (8)$$

with $a := (a_0, \dots, a_{J-1}) \in \mathbb{C}^J$ and $\tilde{u} \in W_\beta^1(\Omega)$. We endow it with the norm

$$\|u; W^{\text{out}}(\Omega)\| = (|a|^2 + \|\tilde{u}; W_\beta^1(\Omega)\|^2)^{1/2}. \quad (9)$$

The space $W^{\text{out}}(\Omega)$ allows us to impose the classical radiation condition for Problem (1). Note that we have $W_\beta^1(\Omega) \subset W^{\text{out}}(\Omega) \subset W_{-\beta}^1(\Omega)$. For $u \in W^{\text{out}}(\Omega)$, the map $\phi \mapsto \mathbf{a}(u, \phi)$ with

$$\mathbf{a}(u, \phi) = \int_{\Omega} \nabla u \cdot \overline{\nabla \phi} - \lambda(1 + i\eta b)u\overline{\phi} dx$$

is well-defined in $W_\beta^1(\Omega)$. Although $u \notin W_\beta^1(\Omega)$ in general when $u \in W^{\text{out}}(\Omega)$, we will extend it as a map in $W_{-\beta}^1(\Omega)$. For $\phi \in \mathcal{C}_0^\infty(\overline{\Omega})$, applying Green's formula yields

$$\mathbf{a}(u, \phi) = - \int_{\Omega} (\Delta + \lambda(1 + i\eta b)) \left(\chi \sum_{j=0}^{J-1} a_j w_j^+ \right) \overline{\phi} dx + \mathbf{a}(\tilde{u}, \phi). \quad (10)$$

Note that above there is no boundary terms because χ is zero in the resonator and the w_j^+ satisfy the homogeneous Neumann boundary condition on $\partial\Omega \cap \partial\Pi$. Since the integrand in the first two integrals is compactly supported, we infer that there is a constant $C > 0$ independent of $\phi \in \mathcal{C}_0^\infty(\overline{\Omega})$ such that

$$|\mathbf{a}(u, \phi)| \leq C \|u; W^{\text{out}}(\Omega)\| \|\phi; W_{-\beta}^1(\Omega)\|. \quad (11)$$

By density of $\mathcal{C}_0^\infty(\overline{\Omega})$ in $W_{-\beta}^1(\Omega)$, we deduce that $\phi \mapsto \mathbf{a}(u, \phi)$ can be uniquely extended as a continuous map in $W_{-\beta}^1(\Omega)$. This discussion allows us to define the linear operator

$$\begin{aligned} \mathcal{A}_\beta^\eta : W^{\text{out}}(\Omega) &\rightarrow W_{-\beta}^1(\Omega)^* \\ u &\mapsto \mathcal{A}_\beta^\eta u \end{aligned} \quad (12)$$

where $\mathcal{A}_\beta^\eta u$ is the unique element of $W_{-\beta}^1(\Omega)^*$ such that

$$\langle \mathcal{A}_\beta^\eta u, \phi \rangle_\Omega = \mathbf{a}(u, \phi), \quad \forall \phi \in \mathcal{C}_0^\infty(\overline{\Omega}). \quad (13)$$

Here $W_{-\beta}^1(\Omega)^*$ stands for the space of continuous antilinear forms over $W_{-\beta}^1(\Omega)$ and $\langle \cdot, \cdot \rangle_{\Omega}$ denotes the (sesquilinear) duality pairing $W_{-\beta}^1(\Omega)^* \times W_{-\beta}^1(\Omega)$. Observe that from (10), for $v \in W_{-\beta}^1(\Omega)$, we have

$$\langle \mathcal{A}_{\beta}^{\eta} u, v \rangle_{\Omega} = - \int_{\Omega} (\Delta + \lambda(1 + i\eta b)) \left(\chi \sum_{j=0}^{J-1} a_j w_j^+ \right) \bar{v} dx + \mathfrak{a}(\tilde{u}, v). \quad (14)$$

From estimate (11), we see that $\mathcal{A}_{\beta}^{\eta} : W^{\text{out}}(\Omega) \rightarrow W_{-\beta}^1(\Omega)^*$ is continuous. Additionally, we have the following properties.

Proposition 3.1. *Assume that β satisfies (7).*

1) *The operator \mathcal{A}_{β}^0 is Fredholm of index zero. If its kernel is non empty, then $\ker \mathcal{A}_{\beta}^0 = \text{span}(v_1^{\text{tr}}, \dots, v_T^{\text{tr}})$ where $v_1^{\text{tr}}, \dots, v_T^{\text{tr}} \in W_{\beta}^1(\Omega)$ are the so-called trapped modes of the problem. In this situation, F belongs to the range of \mathcal{A}_{β}^0 if and only if there holds $F(v_{\tau}^{\text{tr}}) = 0$, $\tau = 1, \dots, T$.*

2) *The operator $\mathcal{A}_{\beta}^{\eta}$ is an isomorphism for all $\eta > 0$.*

Proof. 1) The first statement is a classical result, for the proof see e.g. [39, Ch. 5] and [37, 38]. In particular, the fact that trapped modes, if they exist, decay exponentially at infinity is a consequence of the conservation of energy.

2) Observing that $\mathcal{A}_{\beta}^{\eta} - \mathcal{A}_{\beta}^0 : W^{\text{out}}(\Omega) \rightarrow W_{-\beta}^1(\Omega)^*$ is a compact operator because \mathcal{O} is bounded, we deduce that $\mathcal{A}_{\beta}^{\eta}$ is also Fredholm of index zero. Now if u is an element of $\ker \mathcal{A}_{\beta}^{\eta}$, first by taking $\phi \in \mathcal{C}_0^{\infty}(\Omega)$ in (13), we obtain $\Delta_x u + \lambda(1 + i\eta b)u = 0$ in Ω . Using Green's formula in the truncated waveguide $\Omega_L := \{x \in \Omega : z < L\}$, with $L > 0$, then we can write

$$\begin{aligned} 0 &= ((\Delta_x + \lambda(1 + i\eta b))u, u)_{\Omega_L} - (u, (\Delta_x + \lambda(1 + i\eta b))u)_{\Omega_L} \\ &= 2i\lambda\eta \int_{\mathcal{O}} b|u|^2 dx + \int_{\omega} (\overline{u(x)} \partial_z u(x) - u(x) \overline{\partial_z u(x)}) \Big|_{z=L} dy. \end{aligned}$$

Using the decomposition (8) of u as well as the normalisation of the modes (4), by passing to the limit $L \rightarrow +\infty$, we get

$$2i\lambda\eta \int_{\mathcal{O}} b|u|^2 dx + i|a|^2 = 0.$$

Thus there holds $u = 0$ in \mathcal{O} and the theorem of unique continuation (see [5], [14, §8.3], [2] and the references therein) guarantees that $u \equiv 0$ in Ω . This shows the second assertion. \blacksquare

Proposition 3.2. *For $\eta \geq 0$, for $j = 0, \dots, J-1$, solutions u_j^{η} of the form (5) exist. Moreover, the scattering matrix \mathbb{S}^{η} appearing after (5) is uniquely defined.*

Proof. For $j = 0, \dots, J-1$ and $\eta \geq 0$, define F_j the element of $W_{-\beta}^1(\Omega)^*$ such that

$$F_j(v) = \int_{\Omega} (\Delta(\chi w_j^-) + \lambda(1 + i\eta b)(\chi w_j^-)) \bar{v} dx, \quad \forall v \in W_{-\beta}^1(\Omega). \quad (15)$$

Proposition 3.1 above ensures that for all $\eta \geq 0$, there is a solution $v_j^{\eta} \in W^{\text{out}}(\Omega)$ to the problem $\mathcal{A}_{\beta}^{\eta} v_j^{\eta} = F_j$. This is clear when $\eta > 0$ or when $\eta = 0$ with $\mathcal{A}_{\beta}^{\eta}$ being injective. In those situations, by setting $u_j^{\eta} := v_j^{\eta} + \chi w_j^-$, this guarantees the existence of the functions appearing in (5) and also shows that the scattering matrix \mathbb{S}^{η} is uniquely defined. For $\eta = 0$, in case of existence of a non empty kernel, to verify that the compatibility conditions $F(v_{\tau}^{\text{tr}}) = 0$, $\tau = 1, \dots, T$, are indeed satisfied, one integrates by parts in (15) and exploits the fact that trapped modes decay exponentially at infinity (they belong to $W_{\beta}^1(\Omega)$). Then u_j^{η} is defined up to some linear combination of the trapped modes. However the latter do not modify the value of the s_{jk}^{η} in (5) forming \mathbb{S}^{η} because they are exponentially decaying at infinity. \blacksquare

To set ideas, in case of existence of a non empty kernel for $\eta = 0$, we impose the additional conditions

$$\int_{\mathcal{O}} b u_j^0 \overline{v_\tau^{\text{tr}}} dx = 0, \quad \tau = 1, \dots, T, \quad (16)$$

so that u_j^0 becomes uniquely defined. Observe that it is always possible to impose relations (16) because the fact that the v_τ^{tr} are linearly independent and the theorem of unique continuation guarantee that the Gram matrix $((bv_j^{\text{tr}}, v_\tau^{\text{tr}})_{\mathcal{O}})_{1 \leq j, \tau \leq T}$ is invertible (recall that b is positive in $\overline{\mathcal{O}}$). Note that conditions (16) are one choice among others. We consider that specific one because it will simplify the asymptotic analysis below (see the comment after (21)).

Now we establish a simple identity for the scattering matrix \mathbb{S}^η which is a generalization of the conservation of energy. To proceed, introduce the symplectic (sesquilinear and anti-Hermitian) form q such that

$$q(v, v') = \int_{\omega} \left(\overline{v'(x)} \partial_z v(x) - v(x) \overline{\partial_z v'(x)} \right) \Big|_{z=L} dy$$

where $L > 0$ is given. Note that if v, v' are two functions which solve Problem (1), Green's formula ensures that the quantity $q(v, v')$ is independent of $L > 0$ (because the dissipative inclusion does not meet Π). Using the definition (4) of the modes, a direct calculus based on the orthogonality of the φ_j shows that we have the identities

$$q(w_j^\pm, w_k^\pm) = \pm i \delta_{j,k}, \quad q(w_j^\pm, w_k^\mp) = 0, \quad j, k = 0, \dots, J-1. \quad (17)$$

Proposition 3.3. *For all $\eta \geq 0$, the scattering matrix \mathbb{S}^η is symmetric. Moreover there holds*

$$\mathbb{S}^\eta \overline{\mathbb{S}^\eta}^\top + 2\lambda\eta \mathbb{B}^\eta = \mathbb{I}. \quad (18)$$

Here \mathbb{I} is the identity matrix of $\mathbb{C}^{J \times J}$ while $\mathbb{B}^\eta = (\mathbb{B}_{jk}^\eta)_{0 \leq j, k \leq J-1}$ denotes the positive definite Hermitian matrix such that

$$\mathbb{B}_{jk}^\eta = \int_{\mathcal{O}} b u_j^\eta \overline{u_k^\eta} dx. \quad (19)$$

Remark 3.4. *Identity (18) considered on the diagonal of the matrices can be interpreted as follows: the energy brought to the system by some incident wave is converted in some energy scattered at infinity and some energy dissipated in the inclusion.*

Remark 3.5. *Identity (18) shows that \mathbb{S}^η is unitary for $\eta = 0$ but not for $\eta > 0$.*

Proof. Green's formula in the truncated waveguide $\Omega_L := \{x \in \Omega : z < L\}$, with $L > 0$, gives

$$0 = ((\Delta_x + \lambda(1 + i\eta b))u_j^\eta, \overline{u_k^\eta})_{\Omega_L} - (u_j^\eta, (\Delta_x + \lambda(1 - i\eta b))\overline{u_k^\eta})_{\Omega_L} = q(u_j^\eta, \overline{u_k^\eta}).$$

Passing to the limit as $L \rightarrow +\infty$ in this identity and using relations (5), (17), we get $s_{jk}^\eta = s_{kj}^\eta$ which guarantees that \mathbb{S}^η is symmetric. On the other hand, performing the limit passage $L \rightarrow +\infty$ in

$$\begin{aligned} 0 &= ((\Delta_x + \lambda(1 + i\eta b))u_j^\eta, u_k^\eta)_{\Omega_L} - (u_j^\eta, (\Delta_x + \lambda(1 + i\eta b))u_k^\eta)_{\Omega_L} \\ &= 2i\lambda\eta \int_{\mathcal{O}} b u_j^\eta \overline{u_k^\eta} dx + q(u_j^\eta, u_k^\eta), \end{aligned}$$

we obtain

$$0 = 2i\lambda\eta \int_{\mathcal{O}} b u_j^\eta \overline{u_k^\eta} dx - i\delta_{j,k} + i \sum_{p=0}^{J-1} s_{jp}^\eta \overline{s_{kp}^\eta}.$$

This proves (18). To see that \mathbb{B} has the mentioned properties, we use that b is positive in $\overline{\mathcal{O}}$ and observe that the restrictions $u_0^\eta|_{\mathcal{O}}, \dots, u_{J-1}^\eta|_{\mathcal{O}}$ are linearly independent due to the theorem of unique continuation (the fact that $u_0^\eta, \dots, u_{J-1}^\eta$ are linearly independent functions in Ω can be established by taking the projections against the φ_j at $z = L$ for different $L > 0$). This is enough to guarantee that the Gram matrix \mathbb{B}^η generated by the scalar product of the L^2 -space on \mathcal{O} with weight b is positive definite and Hermitian. \blacksquare

4 Asymptotic of the scattering matrix for small η

Since \mathcal{A}_β^η is a small perturbation of \mathcal{A}_β^0 when $\eta \rightarrow 0^+$, the justification of the following asymptotic formula for \mathbb{S}^η is straightforward.

Theorem 4.1. *As η tends to zero, we have the expansion*

$$\mathbb{S}^\eta = \mathbb{S}^0 - \lambda\eta\mathbb{B}^0\mathbb{S}^0 + \tilde{\mathbb{S}}^\eta. \quad (20)$$

Here \mathbb{B}^0 is the positive definite Hermitian matrix introduced in (19) with $\eta = 0$ and the remainder $\tilde{\mathbb{S}}^\eta$ is such that $\|\tilde{\mathbb{S}}^\eta; \mathbb{C}^{J \times J}\| \leq c\eta^2$.

Proof. For the function u_j^η introduced in (5), we consider the ansatz

$$u_j^\eta = u_j^0 + \eta u_j' + \dots,$$

where dots stand for higher-order asymptotic terms. Inserting this expansion into (1) and extracting the terms of order η , we obtain the problem

$$\begin{cases} -\Delta_x u_j' - \lambda u_j' = i\lambda b u_j^0 & \text{in } \Omega \\ \partial_n u_j' = 0 & \text{on } \partial\Omega. \end{cases} \quad (21)$$

In case of existence of trapped modes, the compatibility conditions of Proposition 3.1 item 1) are fulfilled due to (16). This guarantees that Problem (21) always admits a solution $u_j' \in W^{\text{out}}(\Omega)$ with

$$u_j' = \chi \sum_{p=0}^{J-1} s'_{jp} w_p^+ + \tilde{u}_j', \quad \tilde{u}_j' \in W_\beta^1(\Omega).$$

To get the expression of the coefficients s'_{jp} , we can write

$$i\lambda(bu_j^0, u_k^0)_\mathcal{O} = - \lim_{L \rightarrow +\infty} ((\Delta_x + \lambda)u_j', u_k^0)_{\Omega_L} = - \lim_{L \rightarrow +\infty} q(u_j', u_k^0) = -i \sum_{p=0}^{J-1} s'_{jp} \overline{s_{kp}^0}.$$

Therefore if we set $\mathbb{S}' = (s'_{jp})_{0 \leq j, p \leq J-1}$, we obtain $-\mathbb{S}'\overline{\mathbb{S}^0}^\top = \lambda\mathbb{B}^0$. Since \mathbb{S}^0 is unitary, this implies $\mathbb{S}' = -\lambda\mathbb{B}^0\mathbb{S}^0$. ■

5 Asymptotic of the scattering matrix for large η

In the previous section, we studied the behaviour of \mathbb{S}^η as $\eta \rightarrow 0$. Now we are interested in the situation where $\eta \rightarrow +\infty$. In this case, we expect that the large index material (see (1)) makes the field tend to zero inside the inclusion \mathcal{O} . This leads us to consider the problem with mixed boundary conditions

$$\begin{cases} \Delta_x u^\infty + \lambda u^\infty = 0 & \text{in } \Omega_\bullet := \Omega \setminus \overline{\mathcal{O}} \\ \partial_n u^\infty = 0 & \text{on } \partial\Omega \\ u^\infty = 0 & \text{on } \partial\mathcal{O}. \end{cases} \quad (22)$$

As for (1) with $\eta = 0$ (see Proposition 3.1 item 1)), this problem admits the diffraction solutions

$$u_j^\infty = \chi w_j^- + \chi \sum_{k=0}^{J-1} s_{jk}^\infty w_k^+ + \tilde{u}_j^\infty, \quad (23)$$

where $s_{jk}^\infty \in \mathbb{C}$, $\tilde{u}_j^\infty \in W_\beta^1(\Omega)$. The scattering matrix $\mathbb{S}^\infty := (s_{jk}^\infty)_{0 \leq j, k \leq J-1} \in \mathbb{C}^{J \times J}$ is symmetric and unitary. Note that for Problem (22) there may exist trapped modes, that we denote by $m_1^{\text{tr}}, \dots, m_K^{\text{tr}} \in$

$W_\beta^1(\Omega_\bullet) \subset H^1(\Omega_\bullet)$ (the family is assumed to be linearly independent). In this case, we impose additionally the conditions

$$\int_{\partial\mathcal{O}} b^{-1/2} \partial_n u_j^\infty \overline{\partial_n m_k^{\text{tr}}} ds = 0, \quad k = 1, \dots, K, \quad (24)$$

so that u_j^∞ becomes uniquely defined. Remark that we can indeed have (24) because the Gram matrix $((b^{-1/2} \partial_n m_j^{\text{tr}}, \partial_n m_k^{\text{tr}})_{\partial\mathcal{O}})_{1 \leq j, k \leq K}$ is invertible since $\partial_n m_1^{\text{tr}}|_{\partial\mathcal{O}}, \dots, \partial_n m_K^{\text{tr}}|_{\partial\mathcal{O}}$ are linearly independent functions. To show this property, use again the theorem of unique continuation and the fact that the m_j^{tr} are linearly independent in Ω_\bullet . Again conditions (24) are one choice among others but we impose that specific one because it simplifies the asymptotic procedure below (see (32)).

To construct the asymptotics of the scattering solutions $u_0^\eta, \dots, u_{j-1}^\eta$ and of \mathbb{S}^η as $\eta \rightarrow +\infty$, outside the inclusion \mathcal{O} , we consider the ansatz

$$u_j^\eta = u_j^\infty + \eta^{-1/2} u_j' + \dots \quad \text{in } \Omega_\bullet. \quad (25)$$

Let us mention that we use the same notation as in the previous section for the correctors (u_j' and \mathbb{S}' below) but the objects are different. Since we expect the first term of the ansatz of u_j^η inside \mathcal{O} to be zero and since $\partial_n u_j^\infty$ cannot vanish on the entire surface $\partial\mathcal{O}$ due to the second boundary condition in (22) together with the theorem of unique continuation, we need to compensate for the jump of the normal derivative on $\partial\mathcal{O}$. To proceed, we employ the method of Vishik-Lyusternik [41] and construct a boundary layer in the vicinity of $\partial\mathcal{O}$. Introduce a system of curvilinear coordinates in a neighborhood \mathcal{V} of $\partial\mathcal{O}$ (recall that \mathcal{O} is smooth) such that n is the oriented distance to $\partial\mathcal{O}$, $n > 0$ in $\mathcal{O} \cap \mathcal{V}$, and s is some local coordinate on $\partial\mathcal{O}$. Observe that with this definition, on $\partial\mathcal{O}$, ∂_n stands for the normal derivative with a normal pointing to the interior of \mathcal{O} . The Laplace operator in the local coordinates writes

$$\Delta_x = \partial_n^2 + L(n, s, \partial_n, \partial_s), \quad (26)$$

where $L(n, s, \partial_n, \partial_s) = \ell_n(n, s) \partial_n + \ell_s(n, s) \partial_s + \ell_{sn}(n, s) \partial_n \partial_s + \ell_{ss}(n, s) \partial_s^2$. Here $\ell_n, \ell_s, \ell_{sn}, \ell_{ss}$ are smooth functions of $n \in [0; H]$, $H > 0$ and $s \in \partial\mathcal{O}$. Introducing the stretched normal coordinate

$$t := \eta^{1/2} n,$$

in view of (26), we have

$$\Delta_x + \lambda(1 + i\eta b(x)) = \eta(\partial_t^2 + i\lambda b(s)) + \dots \quad (27)$$

Here and in what follows, to simplify we write $b(s)$ for the value of $b(x)$ for $x \in \partial\mathcal{O}$ ($n = 0$). Inside \mathcal{O} , following the procedure presented in [41], we consider the expansion

$$u_j^\eta(x) = \eta^{-1/2} E(t, s) \partial_n u_j^\infty|_{\partial\mathcal{O}}(x) + \dots \quad (28)$$

where E is the solution of the ordinary differential equation (compare with (27))

$$\partial_t^2 E(t, s) + i\lambda b(s) E(t, s) = 0, \quad t \in (0; +\infty), \quad (29)$$

which decays as $t \rightarrow +\infty$ and such that $\partial_t E(t, s)|_{t=0} = 1$. A direct calculus yields

$$E(t, s) = \frac{\sqrt{2}}{(-1+i)\sqrt{\lambda b(s)}} \exp\left(\frac{-1+i}{\sqrt{2}} \sqrt{\lambda b(s)} t\right) = -\frac{1+i}{\sqrt{2\lambda b(s)}} \exp\left(\frac{-1+i}{\sqrt{2}} \sqrt{\lambda b(s)} t\right). \quad (30)$$

Note that the main terms in (25) and (28) have the same normal derivative on the surface $\partial\mathcal{O}$. Now we are going to set the correction term in the expansion (25) to make the two-term asymptotic approximation continuous on $\partial\mathcal{O}$. We see that u_j' must satisfy the problem

$$\left\{ \begin{array}{ll} \Delta_x u_j' + \lambda u_j' = 0 & \text{in } \Omega_\bullet \\ \partial_n u_j' = 0 & \text{on } \partial\Omega \\ u_j' = g_j'(x) := E(0, s) \partial_n u_j^\infty|_{\partial\mathcal{O}}(x) & \text{for } x \in \partial\mathcal{O}. \end{array} \right. \quad (31)$$

According to [39, Ch. 5] or Proposition 3.1 item 1), in case of absence of trapped modes for (22), Problem (31) admits a unique solution in $W^{\text{out}}(\Omega_\bullet)$ (this space is defined similarly to $W^{\text{out}}(\Omega)$, see (8)). In case of existence of linearly independent trapped modes $m_1^{\text{tr}}, \dots, m_K^{\text{tr}}$, a solution exists if and only if we have

$$\int_{\partial\mathcal{O}} g'_j \partial_n m_k^{\text{tr}} ds = 0, \quad k = 1, \dots, K \quad (32)$$

(note that we can impose that trapped modes be real valued). But thanks to our choice (24), these conditions are indeed satisfied. Therefore Problem (31) admits the solution

$$u'_j = \chi \sum_{k=0}^{J-1} s'_{jk} w_k^+ + \tilde{u}_j,$$

where $\tilde{u}'_j \in W_\beta^1(\Omega_\bullet)$ and the coefficients s'_{jk} compose the correction term \mathbb{S}' in the representation of the scattering matrix

$$\mathbb{S}^\eta = \mathbb{S}^\infty + \eta^{-1/2} \mathbb{S}' + \tilde{\mathbb{S}}^\eta. \quad (33)$$

These coefficients are computed in the usual way by writing

$$\int_{\partial\mathcal{O}} g'_j \overline{\partial_n u_k^\infty} ds = \lim_{L \rightarrow +\infty} \int_\omega (\overline{u_k^\infty} \partial_z u'_j - u'_j \overline{\partial_z u_k^\infty}) \Big|_{z=L} dy = \lim_{L \rightarrow +\infty} q(u'_j, u_k^\infty) = i \sum_{p=0}^{J-1} s'_{jp} \overline{s_{kp}^\infty}.$$

This gives

$$i\mathbb{S}'\overline{\mathbb{S}^\infty}^\top = -\frac{1+i}{\sqrt{2\lambda}} \mathbb{E} \quad \text{and so} \quad \mathbb{S}' = \frac{-1+i}{\sqrt{2\lambda}} \mathbb{E} \mathbb{S}^\infty \quad (34)$$

where \mathbb{E} is the positive definite Hermitian matrix of size $J \times J$ with entries

$$\mathbb{E}_{jk} = \int_{\partial\mathcal{O}} b^{-1/2} \partial_n u_j^\infty \overline{\partial_n u_k^\infty} ds. \quad (35)$$

The following assertion will be proved in the next section.

Theorem 5.1. *As η tends to $+\infty$, we have the expansion*

$$\mathbb{S}^\eta = \mathbb{S}^\infty + \eta^{-1/2} \frac{-1+i}{\sqrt{2\lambda}} \mathbb{E} \mathbb{S}^\infty + \tilde{\mathbb{S}}^\eta. \quad (36)$$

Here \mathbb{E} is the positive definite Hermitian matrix introduced in (35) and the remainder $\tilde{\mathbb{S}}^\eta$ is such that $\|\tilde{\mathbb{S}}^\eta; \mathbb{C}^{J \times J}\| \leq c\eta^{-3/4}$.

Remark 5.2. *As mentioned in the introduction, this shows that a very dissipative inclusion behaves as a sound soft obstacle and when η tends to $+\infty$, \mathbb{S}^η converges to the unitary scattering matrix associated to it.*

Remark 5.3. *In the energy identity $\mathbb{S}^\eta \overline{\mathbb{S}^\eta}^\top + 2\lambda\eta \mathbb{B}^\eta = \mathbb{I}$ (see (18)), one may think at first glance that the term $\lambda\eta \mathbb{B}^\eta$ becomes large when η goes to $+\infty$. However this is not true because according to the definition (19) of \mathbb{B}^η and the result of Remark 6.2, we have $\|\mathbb{B}^\eta; \mathbb{C}^{J \times J}\| \leq c\eta^{-3/4}$. This is in agreement with the expansion (36).*

6 Justification of asymptotics as $\eta \rightarrow +\infty$

The most technical and complicated part in this article is the derivation of an a priori estimate for the solutions of Problem (1) for large values of η . To proceed, we will work in an *ad hoc* weighted space with a composite structure as in [29] which combines the spaces of [1] and [25]. It will allow us to take into account the different behaviours of the u_j^η on each side of $\partial\mathcal{O}$. In addition to the

detached asymptotics at infinity together with the exponential factor as in the norm (6), we will include powers of the parameter η and the function

$$\varrho(x) = \min\{1, \text{dist}(x, \partial\mathcal{O})\}. \quad (37)$$

Note that the min with respect to one in this definition ensures that ϱ has an influence only in a neighbourhood of $\partial\mathcal{O}$. We formulate the important a priori estimate in Theorem 6.1 below but postpone its proof to the Appendix. In order to make the demonstration more comprehensible, we will make the assumption that trapped modes do not exist for Problem (22). The general case can be treated with marginal alterations that will be commented in item 5° of the Appendix.

To state our estimate, first we introduce the norms we will work with. For $u \in W_{\beta}^1(\Omega)$, set

$$\|u; W_{\beta, \eta}^1(\Omega)\| = (\|e^{\beta z} \nabla_x u; L^2(\Omega)\|^2 + \|e^{\beta z} (\varrho + \eta^{-1/2})^{-1} u; L^2(\Omega_{\bullet})\|^2 + \eta \|u; L^2(\mathcal{O})\|^2)^{1/2}. \quad (38)$$

Then for $u = \chi \sum_{j=0}^{J-1} a_j w_j^{\dagger} + \tilde{u}$ with $a = (a_0, \dots, a_{J-1}) \in \mathbb{C}^J$ and $\tilde{u} \in W_{\beta}^1(\Omega)$, we define

$$\|u; W_{\eta}^{\text{out}}(\Omega)\| = (|a|^2 + \|\tilde{u}; W_{\beta, \eta}^1(\Omega)\|^2)^{1/2}. \quad (39)$$

Observe that for all $\eta > 0$, the norms $W_{\beta}^1(\Omega)$ and $W_{\beta, \eta}^1(\Omega)$ (respectively $W^{\text{out}}(\Omega)$ and $W_{\eta}^{\text{out}}(\Omega)$) are equivalent. However the constants of equivalence depend on η and degenerate when η tends to $+\infty$. Below, for $F \in W_{-\beta}^1(\Omega)^*$, we shall also work with the norm

$$\|F; W_{-\beta, \eta}^1(\Omega)^*\| = \sup_{v \in W_{-\beta}^1(\Omega) \setminus \{0\}} \frac{|\langle F, v \rangle_{\Omega}|}{\|v; W_{-\beta, \eta}^1(\Omega)\|}.$$

Theorem 6.1. *Assume that Problem (22) does not have trapped modes. Then there is a constant $c > 0$ such that for all $F \in W_{-\beta}^1(\Omega)^*$, the function $u \in W^{\text{out}}(\Omega)$ satisfying $\mathcal{A}_{\beta}^{\eta} u = F$ is such that*

$$\|u; W_{\eta}^{\text{out}}(\Omega)\| \leq c \|F; W_{-\beta, \eta}^1(\Omega)^*\|, \quad (40)$$

for all $\eta \geq \eta_0$, where η_0 is given.

Now let us turn to the justification of the asymptotic expansion given in Theorem 5.1.

Proof of Theorem 5.1. Denote by u_{\bullet}^{η} (resp. $u_{\mathcal{O}}^{\eta}$) the restriction of u^{η} to the domain Ω_{\bullet} (resp. \mathcal{O}). In accordance with the formal procedure of Section 5, we define an asymptotic approximation \hat{u}_j^{η} of the function u_j^{η} appearing in (5) by setting

$$\hat{u}_j^{\eta} = \begin{cases} \hat{u}_{j\bullet}^{\eta} & \text{in } \Omega_{\bullet} \\ \hat{u}_{j\circ}^{\eta} & \text{in } \mathcal{O} \end{cases} \quad \text{with} \quad \begin{cases} \hat{u}_{j\bullet}^{\eta} & = u_j^{\infty} + \eta^{-1/2} u'_j \\ \hat{u}_{j\circ}^{\eta}(x) & = \eta^{-1/2} \chi_{\mathcal{O}}(x) E(\sqrt{\eta} n, s) \partial_n u_j^{\infty}|_{\partial\mathcal{O}}(s), \quad x \in \mathcal{O}. \end{cases} \quad (41)$$

Here the terms u_j^{∞} , u'_j , E are respectively introduced in (23), (31), (30). Moreover $\chi_{\mathcal{O}} \in \mathcal{C}^{\infty}(\overline{\mathcal{O}})$ is a cut-off function with support in $\overline{\mathcal{O}} \cap \mathcal{V}$ such that $\chi_{\mathcal{O}}(x) = 1$ for $n \in [0; d]$ with $d > 0$ (for the definition of \mathcal{V} and the local coordinates (n, s) , see before (26)).

Define the error $e_j^{\eta} := u_j^{\eta} - \hat{u}_j^{\eta}$. The function e_j^{η} is smooth on each side of $\partial\mathcal{O}$ and according to the boundary conditions in (22), (31), we have

$$\hat{u}_{j\bullet}^{\eta} = \hat{u}_{j\circ}^{\eta} \quad \text{on } \partial\mathcal{O}. \quad (42)$$

Moreover we observe that in the expansion of e_j^{η} at infinity, the incoming waves of u_j^{η} , \hat{u}_j^{η} cancel. These properties are sufficient to guarantee that e_j^{η} is an element of $W^{\text{out}}(\Omega)$. On the other hand, using that

$$\Delta_x \hat{u}_j^{\eta} + \lambda \hat{u}_j^{\eta} = 0 \quad \text{in } \Omega_{\bullet}$$

and defining the functions (see in particular (28) for the calculus of the second one)

$$f := -\Delta_x \hat{u}_{j_o}^\eta - \lambda(1 + i\eta b) \hat{u}_{j_o}^\eta, \quad g := \partial_n \hat{u}_{j_\bullet}^\eta|_{\partial\mathcal{O}} - \partial_n \hat{u}_{j_o}^\eta|_{\partial\mathcal{O}} := \eta^{-1/2} \partial_n u'_j, \quad (43)$$

we get

$$\mathcal{A}_\beta^\eta e_j^\eta = F \quad \text{where} \quad F(\psi) = \int_{\mathcal{O}} f \bar{\psi} dx + \int_{\partial\mathcal{O}} g \bar{\psi} ds, \quad \forall \psi \in W_{-\beta}^1(\Omega).$$

Let us estimate the $W_{-\beta,\eta}^1(\Omega)^*$ -norm of F . First, by using formulas (26), (29), we can write

$$\begin{aligned} |\eta^{-1/2} \chi_{\mathcal{O}}(x) (\Delta_x + \lambda(1 + i\eta b(x))) (E(\sqrt{\eta}n, s) \partial_n u_{j_\bullet}^\infty|_{\partial\mathcal{O}}(s))| &\leq ce^{-\delta\sqrt{\eta}n}, \\ |\eta^{-1/2} [\Delta_x, \chi_{\mathcal{O}}(x)] (E(\sqrt{\eta}n, s) \partial_n u_{j_\bullet}^\infty|_{\partial\mathcal{O}}(s))| &\leq ce^{-\delta\sqrt{\eta}d} \end{aligned}$$

with $\delta > 0$. Here $[\Delta_x, \chi_{\mathcal{O}}]$ stands for the commutator such that $[\Delta_x, \chi_{\mathcal{O}}]\varphi = \Delta_x(\chi_{\mathcal{O}}\varphi) - \chi_{\mathcal{O}}\Delta_x\varphi$. This allows us to write

$$\left| \int_{\mathcal{O}} f \bar{\psi} dx \right| \leq c \left| \int_{\mathcal{V} \cap \mathcal{O}} e^{-2\delta\sqrt{\eta}m} dx \right|^{1/2} \|\psi; L^2(\mathcal{O})\| \leq c\eta^{-3/4} \|\psi; W_{-\beta,\eta}^1(\Omega)\|. \quad (44)$$

Note that above the integral over $\mathcal{V} \cap \mathcal{O}$ gives a term of order $\eta^{-1/2}$. The additional factor $\eta^{-1/2}$ appears to compensate the term $\eta^{1/2}$ multiplying $\|\psi; L^2(\mathcal{O})\|$ in the norm (38). On the other hand, from the expression of g in (43), we can write

$$\left| \int_{\partial\mathcal{O}} g \bar{\psi} ds \right| \leq c\eta^{-1/2} \|\psi; L^2(\partial\mathcal{O})\|. \quad (45)$$

By working in local coordinates, rectifying the boundary $\partial\mathcal{O}$ and proceeding to an explicit calculus, one can establish the trace inequality (see e.g. [19, Lem. 5.2] or the proof of [18, Thm. 1.5.1.10])

$$\|\psi; L^2(\partial\mathcal{O})\|^2 \leq c_{\mathcal{O}} \|\psi; H^1(\mathcal{O})\| \|\psi; L^2(\mathcal{O})\|. \quad (46)$$

Using it in (45) and exploiting the definition of the norm (38), we obtain

$$\left| \int_{\partial\mathcal{O}} g \bar{\psi} ds \right| \leq c\eta^{-3/4} \|\psi; W_{-\beta,\eta}^1(\Omega)\|. \quad (47)$$

Gathering (44) and (47) leads to $\|F; W_{-\beta,\eta}^1(\Omega)^*\| \leq c\eta^{-3/4}$. From the uniform estimate (40) of Theorem 6.1, this implies

$$\|e_j^\eta; W_\eta^{\text{out}}(\Omega)\| = \|u_j^\eta - \hat{u}_j^\eta; W_\eta^{\text{out}}(\Omega)\| \leq c\eta^{-3/4}. \quad (48)$$

Finally we can take advantage of the use of the spaces with detached asymptotics: since the norm $\|e_j^\eta; W_\eta^{\text{out}}(\Omega)\|$ involves the moduli of the reflection coefficients e_j^η , this justifies the asymptotic expansion of the scattering matrix \mathbb{S}^η given in Theorem 5.1 as η tends to $+\infty$. \blacksquare

Remark 6.2. From (38)–(39), we see that estimate (40) implies in particular that the diffraction solutions u_j^η introduced in (5) are such that $\|u_j^\eta; L^2(\mathcal{O})\| \leq c\eta^{-1/2}$, where c is independent of $\eta \geq \eta_0$. But this is not optimal. Indeed using the error estimate (48) together with the definition of \hat{u}_j^η in (41), we get $\|u_j^\eta; L^2(\mathcal{O})\| \leq c\eta^{-3/4}$.

7 Possible generalizations and open questions

1°. Dirichlet boundary condition. The problem consisting of the partial differential equation of (1) supplemented with the Dirichlet boundary condition

$$u^\eta = 0 \quad \text{on } \partial\Omega$$

instead of the Neumann one can be studied in the same way. All formulas remain basically the same, the only change being that the first eigenvalue λ_1^D of the model Dirichlet problem on the cross-section ω is positive so that to study waves scattering phenomena in Ω , one needs to assume that $\lambda > \lambda_1^D > 0$.

2°. Smoothness of boundaries. Concerning the study of the properties of the operator \mathcal{A}_β^η in (12), one can allow the surface $\partial\mathcal{O}$ to be only Lipschitz. Besides, the analysis of the asymptotics of the scattering matrix as $\eta \rightarrow 0^+$ can also be done as above when $\partial\mathcal{O}$ is only Lipschitz. However to consider the situation $\eta \rightarrow +\infty$, the smoothness of $\partial\mathcal{O}$ is definitely needed. To explain this observation, consider the case $d = 2$ with \mathcal{O} coinciding with a rectangle. Then the solution u_j^∞ of Problem (22) has the singularities $cr^{2/3}\sin(2\theta/3)$, where $(r, \theta) \in \mathbb{R}_+ \times (0; 3\pi/2)$ are the polar coordinates associated with one corner of the rectangle (see [25] and [39, Ch. 2]). Notice that the opening of the corner in Ω_\bullet is $3\pi/2$. The singularity of the normal derivative $\partial_n u_j^\infty$ is of the form $cr^{-1/3}\sin(2\theta/3)$ and therefore Problem (31) has no solution belonging to $H_{\text{loc}}^1(\overline{\Omega_\bullet})$. As a consequence the asymptotic procedure of Section 5 fails. To compensate for these singularities one needs to construct two-dimensional power-law boundary layers in the vicinity of the corner points. Although similar boundary layers near angular and conical points of the boundaries have been studied in many papers, see [8, 34, 35, 6] and others, this particular boundary layer has not been examined yet even in the planar case, and determining its structure remains an open question. Note that the problem involved in the description of the above mentioned boundary layer near the corner points of the rectangle writes

$$-\Delta_\xi V - \lambda i B V = F \quad \text{in } \mathbb{R}^2, \quad (49)$$

where B is the function such that $B = b(P) > 0$ in the quadrant $\mathbb{K} := \{\xi \mid \xi_1 > 0, \xi_2 > 0\}$ and $B = 0$ in $\mathbb{R}^2 \setminus \mathbb{K}$. Here P stands for the considered corner point. Equation (49) has been obtained from (1) by the coordinate change $x \mapsto \xi = \eta^{1/2}(x - P)$ and the formal limit passage $\eta \rightarrow +\infty$.

3°. Impedance boundary condition. To model the fact that a part Γ of $\partial\Omega$ is dissipative, one can consider the following problem with an impedance boundary condition

$$\begin{cases} \Delta_x u^\eta + \lambda u^\eta = 0 & \text{in } \Omega \\ \partial_n u^\eta = i\eta b u^\eta & \text{on } \Gamma \\ \partial_n u^\eta = 0 & \text{on } \partial\Omega \setminus \Gamma. \end{cases} \quad (50)$$

Here Γ is a bounded $(d - 1)$ -dimensional submanifold of $\partial\Omega$ with a smooth boundary $\partial\Gamma$ and we assume that $b > 0$ on $\overline{\Gamma}$. Then results analogous to Theorem 4.1 and 5.1 hold for the corresponding scattering matrix. More precisely, when $\eta \rightarrow 0^+$, similarly to (20), we have $\mathbb{S}^\eta = \mathbb{S}^0 - \eta \mathbb{B}^0 \mathbb{S}^0 + \tilde{\mathbb{S}}^\eta$ where \mathbb{S}^0 stands for the scattering matrix of the Neumann problem (1) with $\eta = 0$ and \mathbb{B}^0 is the Hermitian positive matrix such that

$$\mathbb{B}_{jk}^0 = \int_\Gamma b u_j^0 \overline{u_k^0} ds.$$

On the other hand, when $\eta \rightarrow +\infty$, the asymptotic structure become much more involved. If Γ is a manifold without boundary (for example, Problem (50) is posed in the domain Ω_\bullet introduced in (22) and $\Gamma = \partial\mathcal{O}$), then we have the expansion

$$\mathbb{S}^\eta = \mathbb{S}^\infty + \eta^{-1} \mathbb{E} \mathbb{S}^\infty + \tilde{\mathbb{S}}^\eta \quad (51)$$

where \mathbb{S}^∞ is the scattering matrix of a mixed boundary value problem similar to (22) with the condition $u^\infty = 0$ on Γ (instead of $u^\infty = 0$ on $\partial\mathcal{O}$) and $\mathbb{E} = (\mathbb{E}_{jk})_{0 \leq j, k \leq J-1}$ is the Hermitian positive matrix such that

$$\mathbb{E}_{jk} = \int_\Gamma b^{-1} \partial_n u_j^\infty \overline{\partial_n u_k^\infty} ds. \quad (52)$$

However when $\overline{\Gamma} \cap \overline{\partial\Omega} \setminus \overline{\Gamma} \neq \emptyset$, the normal derivatives of the solutions (23) become strongly singular on $\partial\Gamma$ so that integrals (52) may diverge. As a consequence, one needs to add new boundary layers

near $\partial\Gamma$. To clarify this, consider again a waveguide $\Omega \subset \mathbb{R}^2$ and select a connected arc $\Gamma \subset \partial\Omega$. Denote by P^\pm the endpoints of Γ where the Dirichlet and Neumann conditions meet. At these points the quantities $\nabla_x u_j^\infty$ get singularities behaving as $|x - P^\pm|^{-1/2}$, see for example [39, Ch. 2]. Consequently the integrals (52) indeed diverge. Now assume in addition that $\partial\Omega$ is straight in a neighbourhood of $\partial\Gamma$. Then performing the coordinate change $x \mapsto \xi = \eta(x - P^\pm)$ and taking the limit $\eta \rightarrow +\infty$, one is led to consider the following problem

$$\begin{cases} -\Delta_\xi V = F & \text{in } \{\xi = (\xi_1, \xi_2) \in \mathbb{R}^2 \mid \xi_2 > 0\} \\ -\frac{\partial V}{\partial \xi_2}(\xi_1, 0) = 0 & \text{for } \xi_1 < 0, \quad -\frac{\partial V}{\partial \xi_2}(\xi_1, 0) = ib^\pm V(\xi_1, 0) & \text{for } \xi_1 > 0. \end{cases} \quad (53)$$

with $b^\pm := b(P^\pm) > 0$. The solvability and behaviour at infinity of solutions of Problem (53) can be studied directly by the approach of [33, 3]. Then the formal procedure for the construction of the asymptotics of the solutions to the original problem with a large parameter η can be adapted, with small modifications, from [34, 15].

4°. Monomode regime. Assume that $\lambda \in (0; \lambda_1)$ ($J = 1$) so that only the modes

$$w_0^\pm(x) = (2\sqrt{\lambda} \text{mes}_{d-1}(\omega))^{-1/2} e^{\pm i\sqrt{\lambda}z} \quad (54)$$

can propagate in the cylinder $\omega \times \mathbb{R}$. In this situation, the scattering matrix reduces to a scalar reflection coefficient that we still denote by $\mathbb{S}^\eta \in \mathbb{C}$. Furthermore, identity (18) of Proposition 3.3 writes

$$|\mathbb{S}^\eta|^2 + 2\lambda\eta \int_{\mathcal{O}} b |u^\eta|^2 dx = 1. \quad (55)$$

Here

$$u^\eta = w_0^- + \mathbb{S}^\eta w_0^+ + \tilde{u}^\eta \quad (56)$$

is the solution (5) with $j = 0$. Note that the waves (54) are defined everywhere in Ω . Therefore the cut-off function χ of (5) can be omitted in (56). Relation (55) imposes that $|\mathbb{S}^\eta| \in [0; 1)$ for $\eta > 0$. Moreover Theorems 4.1 and 5.1 guarantee that

$$\lim_{\eta \rightarrow 0^+} |\mathbb{S}^\eta| = \lim_{\eta \rightarrow +\infty} |\mathbb{S}^\eta| = 1.$$

Thus, the continuous function $\eta \mapsto |\mathbb{S}^\eta|$ has a global minimum at some $\eta_\star \in (0; +\infty)$. If $\mathbb{S}^{\eta_\star} = 0$, the device acts as a perfect absorber of the piston mode. However in general this minimum is not zero. We will explain in Section 9 how to modify the geometry to create perfect absorbers. To conclude with this discussion, let us give a remarkable formula (that we will not use in our study) for the derivative of the reflection coefficient with respect to the dissipation. The quantity $\partial_\eta u^\eta$ solves the problem

$$\begin{cases} -\Delta_x(\partial_\eta u^\eta) - \lambda(1 + i\eta b)(\partial_\eta u^\eta) = i\lambda b u^\eta & \text{in } \partial\Omega \\ \partial_n(\partial_\eta u^\eta) = 0 & \text{on } \partial\Omega \end{cases}$$

and admits the representation

$$\partial_\eta u^\eta = \partial_\eta \mathbb{S}^\eta w_0^+ + \widetilde{\partial_\eta u^\eta}.$$

Since we have $\overline{u^\eta} = w_0^+ + \overline{\mathbb{S}^\eta} w_0^- + \widetilde{\overline{u^\eta}}$, the Green formula together with relations (17) for $j = 0$ yield

$$-\lambda \int_{\mathcal{O}} b (u^\eta)^2 dx = -i \lim_{L \rightarrow +\infty} q(\partial_\eta u^\eta, \overline{u^\eta}) = \partial_\eta \mathbb{S}^\eta. \quad (57)$$

Notice that the integrand in (55) contains the factor $|u^\eta|^2$ while (57) involves $(u^\eta)^2$.

8 Numerics

In this section, we illustrate the results we have obtained above. To proceed, we compute numerically the scattering solutions u_j^η introduced in (5). We use a P2 finite element method in a domain obtained by truncating Ω . On the artificial boundary created by the truncation, a Dirichlet-to-Neumann operator with 15 terms serves as a transparent condition (see more details for example in [17, 22, 7]). Once we have computed u_j^η , we get easily the coefficients s_{jk}^η constituting the scattering matrix \mathbb{S}^η . The numerics have been made using the library `Freefem++` [23].

In Figure 2, we display the field u_0^η for different values of η in a geometrical setting where only one mode can propagate ($J = 1$). We also present the solution u_0^∞ introduced in (23) of the problem with a Dirichlet boundary condition on the obstacle. In accordance in particular with estimate (48), we see that u_0^η converges to u_0^∞ as η tends to $+\infty$. Interestingly, we observe that this result seems to hold true also in the situation where \mathcal{O} is a rectangle (see the right column) though this case does not enter our analysis (in our work \mathcal{O} has to be smooth, see item 2° of Section 7).

In Figure 3, the setting is the same as in Figure 2. Since we work in monomode regime, the scattering matrix \mathbb{S}^η reduces to a complex number (reflection coefficient). Let us remark that in this simple geometry, for $\eta = 0$, we have $u_0^0 = w_0^- + w_0^+$ so that $\mathbb{S}^0 = 1$. This is observed on line 2. As expected, we note that as η tends to $+\infty$, \mathbb{S}^η converges to \mathbb{S}^∞ (see lines 2 and 3). For the rectangular inclusion, we notice that there is one value of η such that $\mathbb{S}^\eta \approx 0$ (see lines 1 and 2, column 2). This particular phenomenon does not happen in general (see column 1).

In Figure 4, we display the eigenvalues of \mathbb{S}^η in the complex plane for different values of η . Here the spectral parameter λ has been chosen such that five modes can propagate (\mathbb{S}^η is of size 5×5). For $\eta = 0$, in this simple geometry we have $\mathbb{S}^0 = \text{Id}$ so that the five eigenvalues are equal to one. For $\eta > 0$, we observe that the modulus of the eigenvalues of \mathbb{S}^η is smaller than one. This was expected because for $\eta > 0$, \mathbb{S}^η is no longer unitary, and more precisely this is in agreement with identity (18). Finally, we see that when η tends to $+\infty$, the eigenvalues of \mathbb{S}^η converge to values on the unit circle. This corroborates the result of Theorem 5.1 which guarantees that \mathbb{S}^η tends to a unitary matrix.

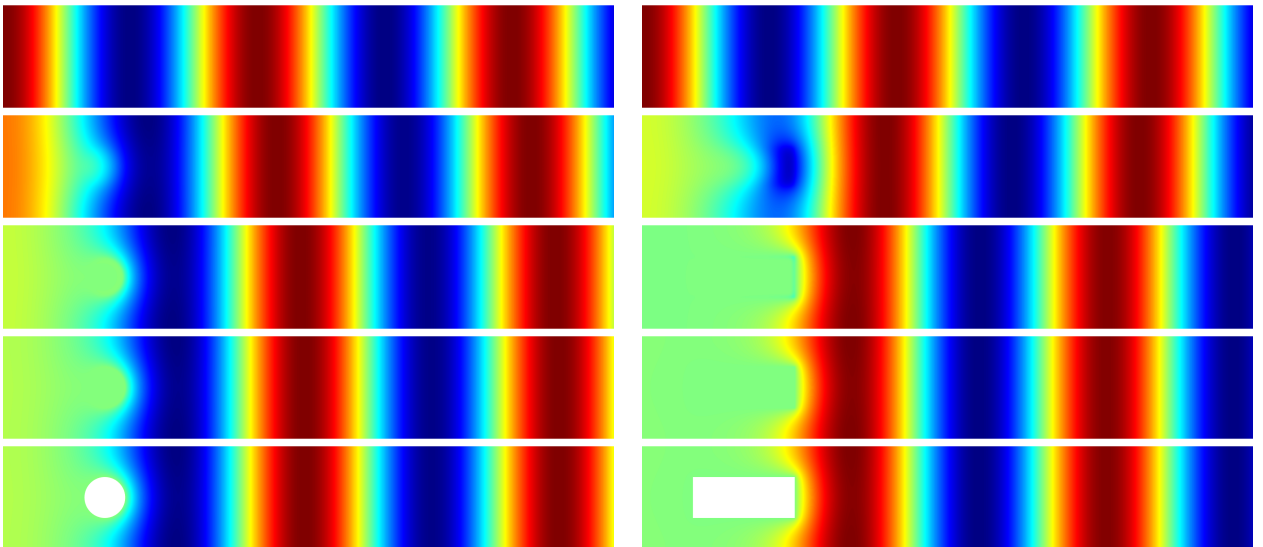


Figure 2: Line 1-4: real part of u_0^η for, respectively, $\eta = 0, 10, 1000, 10^{10}$. Last line: real part of u_0^∞ (solution of the problem with a Dirichlet boundary condition on the obstacle, see (23)). In the results of the left (resp. right) column, the inclusion \mathcal{O} is a disk (resp. a rectangle). Here the strip is of height one ($\lambda_1 = \pi$) and $\lambda = (0.8\pi)^2$ so that only one mode can propagate ($J = 1$).

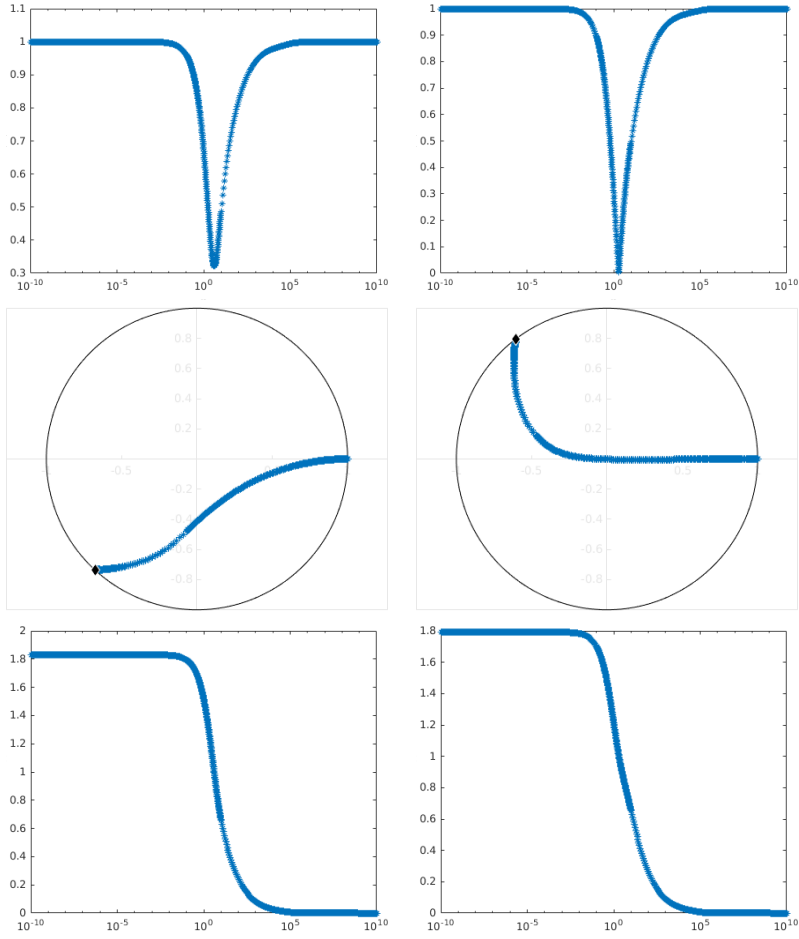


Figure 3: Same setting as in Figure 2 (monomode regime, circular inclusion on the left, rectangular inclusion on the right). Line 1: $|\mathbb{S}^\eta|$ with respect to $\eta \in (10^{-10}; 10^{10})$. Line 2: \mathbb{S}^η in the complex plane with respect to $\eta \in (10^{-10}; 10^{10})$. The black diamond on the unit circle represents the value of \mathbb{S}^∞ . Line 3: $|\mathbb{S}^\eta - \mathbb{S}^\infty|$ with respect to $\eta \in (10^{-10}; 10^{10})$.

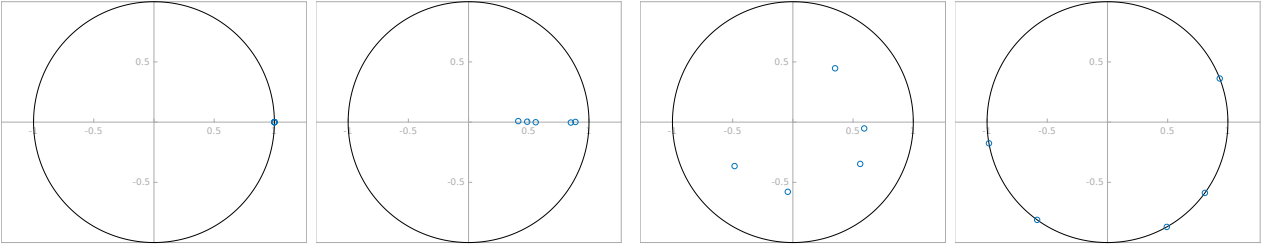


Figure 4: Eigenvalues of \mathbb{S}^η in the complex plane for $\eta = 10^{-10}, 10^{-1}, 5, 10^{10}$ (from left to right). Here the spectral parameter $\lambda = (4.8\pi)^2 \in ((4\pi)^2; (5\pi)^2)$ has been chosen such that five modes can propagate (\mathbb{S}^η is of size 5×5). The black circle represents the unit circle.

9 Perfect absorber in 2D

In this section, to simplify the presentation we work in 2D, though the ideas would work similarly in 3D, and to set ideas we assume that Ω coincides with $[0; +\infty) \times (0; 1)$ for $z \geq 0$. In this situation, we have $\lambda_1 = \pi^2$. We take $\lambda \in (0; \pi^2)$ ($J = 1$) so that only the plane modes w_0^\pm can propagate. As already said, in this circumstance, the scattering matrix reduces to a scalar reflection coefficient that we still denote by $\mathbb{S}^\eta \in \mathbb{C}$. Our goal here is to explain how to exhibit perfect absorbers, that is geometries where $\mathbb{S}^\eta \approx 0$. We have seen in item 4° of Section 7 that the function $\eta \mapsto |\mathbb{S}^\eta|$ always reaches a minimum on $[0; +\infty)$. But for given Ω, \mathcal{O} , in general this minimum is not zero. What we

prove below is that for any choice of Ω , \mathcal{O} , $\eta > 0$, one can perturb the boundary $\partial\Omega$ to get a reflection coefficient approximately equal to zero. For numerical studies, we refer the reader to [13, 32, 40, 24].

Once for all, we assume that Ω , \mathcal{O} and $\eta > 0$ are given. The key idea of the approach will be to glue Ω to a well-designed waveguide for which the reflection coefficient coincides with $\overline{\mathbb{S}^\eta}$. To obtain such a waveguide, we follow an idea proposed in [12] that we recall now.

9.1 Reaching any reflection coefficient

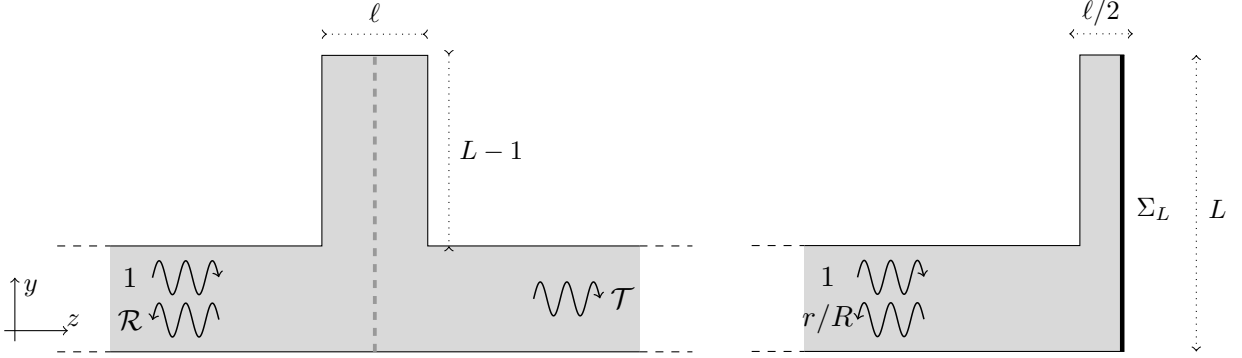


Figure 5: Geometries of \mathcal{G}_L (left) and \mathfrak{g}_L (right).

Set $\ell = \pi/\sqrt{\lambda}$ and for $L > 1$, define the waveguide (see Figure 5 left)

$$\mathcal{G}_L := \{(y, z) \in (0; 1) \times \mathbb{R} \cup [1; L) \times (-\ell/2; \ell/2)\}. \quad (58)$$

The value $\pi/\sqrt{\lambda}$ for the width of the bounded branch of \mathcal{G}_L is very important in the analysis we develop below. We consider the dissipationless problem

$$\begin{cases} \Delta_x v + \lambda v = 0 & \text{in } \mathcal{G}_L \\ \partial_n v = 0 & \text{on } \partial\mathcal{G}_L. \end{cases} \quad (59)$$

Let $\chi_l \in \mathcal{C}^\infty(\mathbb{R}^2)$ (resp. $\chi_r \in \mathcal{C}^\infty(\mathbb{R}^2)$) be a cut-off function equal to one for $z \leq -\ell$ (resp. $z \geq \ell$) and to zero for $z \geq -\ell/2$ (resp. $z \leq \ell/2$). Problem (59) admits a solution with the expansion

$$v = \chi_l (w_0^+ + \mathcal{R} w_0^-) + \chi_r \mathcal{T} w_0^+ + \tilde{v}, \quad (60)$$

where $\mathcal{R}, \mathcal{T} \in \mathbb{C}$ and where \tilde{v} decays exponentially as $O(e^{-\sqrt{\pi^2 - \lambda}|z|})$ for $z \rightarrow \pm\infty$. The reflection coefficient \mathcal{R} and transmission coefficient \mathcal{T} in (60) are uniquely defined and satisfy the relation of conservation of energy $|\mathcal{R}|^2 + |\mathcal{T}|^2 = 1$. They depend on L and below we also write $\mathcal{R}(L), \mathcal{T}(L)$ instead of \mathcal{R}, \mathcal{T} . For our purpose, we need to study the behaviour of $\mathcal{R}(L), \mathcal{T}(L)$ as functions of L . To proceed, we use the symmetry with respect to the (Oy) axis. Define the half-waveguide

$$\mathfrak{g}_L := \{(y, z) \in \mathcal{G}_L \mid z < 0\} \quad (61)$$

(see Figure 5 right). Introduce the problem with Neumann boundary conditions

$$\begin{cases} \Delta u + \lambda u = 0 & \text{in } \mathfrak{g}_L \\ \partial_n u = 0 & \text{on } \partial\mathfrak{g}_L \end{cases} \quad (62)$$

as well as the problem with mixed boundary conditions

$$\begin{cases} \Delta U + \lambda U = 0 & \text{in } \mathfrak{g}_L \\ \partial_n U = 0 & \text{on } \partial\mathfrak{g}_L \cap \partial\mathcal{G}_L \\ U = 0 & \text{on } \Sigma_L := (0; L) \times \{0\}. \end{cases} \quad (63)$$

Problems (62) and (63) admit respectively the solutions

$$\begin{aligned} u &= w_0^+ + r w_0^- + \tilde{u}, & \text{with } \tilde{u} &\in H^1(\mathfrak{g}_L), \\ U &= w_0^+ + R w_0^- + \tilde{U}, & \text{with } \tilde{U} &\in H^1(\mathfrak{g}_L), \end{aligned} \quad (64)$$

where $r, R \in \mathbb{C}$ are uniquely defined. Moreover, due to conservation of energy, one has

$$|r| = |R| = 1. \quad (65)$$

Direct inspection shows that if v is a solution of Problem (59) then we have $v(y, z) = (u(y, z) + U(y, z))/2$ in \mathfrak{g}_L and $v(y, z) = (u(y, -z) - U(y, -z))/2$ in $\mathcal{G}_L \setminus \overline{\mathfrak{g}_L}$ (up possibly to a term which is exponentially decaying at $\pm\infty$ if there are trapped modes at the given λ). We deduce that the scattering coefficients \mathcal{R}, \mathcal{T} appearing in the decomposition (60) of v are such that

$$\mathcal{R} = \frac{r + R}{2} \quad \text{and} \quad \mathcal{T} = \frac{r - R}{2}. \quad (66)$$

Remark that relations (66) rely only on the symmetry of the waveguide, not on the choice (58). Now in the particular geometry considered here, one observes that $U' := w_0^+ - w_0^- = i(2/\sqrt{\lambda})^{1/2} \sin(\sqrt{\lambda}z)$ is a solution to (62) for all $L > 1$. Note that this property is based on the fact that $\pi/(2\sqrt{\lambda})$, the width of the bounded branch of \mathfrak{g}_L , coincides with the quarter wavelength of the waves w_0^\pm . By uniqueness of the definition of the coefficient R in (64), we deduce that

$$R = R(L) = -1 \quad \text{for all } L > 1. \quad (67)$$

On the other hand, it is showed in [11, §3.2] that as $L \rightarrow +\infty$, $r(L)$ runs continuously on the unit circle $\mathcal{C}(0, 1)$ (remember the constraint (65)) and that we have $|r(L) - r^{\text{asy}}(L)| \leq C e^{-cL}$ for certain $c, C > 0$ where $L \mapsto r^{\text{asy}}(L)$ runs periodically on $\mathcal{C}(0, 1)$ with a period of $\pi/\sqrt{\lambda}$. Therefore from (66), we infer that as $L \rightarrow +\infty$, $\mathcal{R}(L)$ runs continuously on $\mathcal{C}(-1/2, 1/2)$, almost periodically with a period of $\pi/\sqrt{\lambda}$. This shows that by tuning L , we can get any reflection coefficient of $\mathcal{C}(-1/2, 1/2)$. For our analysis below, we need more and wish to attain any point of the unit disk. To proceed, let us define the shifted waveguide

$$\mathcal{G}_L^\sigma := \{(y, z) \mid (y, z - \sigma) \in \mathcal{G}_L\}. \quad (68)$$

Then Problem (59) set in \mathcal{G}_L^σ admits a solution with the expansion

$$v^\sigma = \chi_l (w_0^+ + \mathcal{R}^\sigma w_0^-) + \chi_r \mathcal{T}^\sigma w_0^+ + \tilde{v}^\sigma, \quad (69)$$

where \tilde{v}^σ decay exponentially at infinity. Clearly we have $v^\sigma(y, z) = e^{i\sqrt{\lambda}\sigma} v(y, z - \sigma)$, possibly up to some exponentially decaying terms if trapped modes exist, which shows in particular that $\mathcal{R}^\sigma = e^{2i\sqrt{\lambda}\sigma} \mathcal{R}$. Therefore this proves that by choosing carefully L and σ , for $\mathcal{R}^\sigma(L)$ we can get any value in the unit disk.

9.2 Association with the dissipative waveguide

Let us come back to our dissipative waveguide for which $\Omega, \mathcal{O}, \eta > 0$, and so \mathbb{S}^η , are given once for all. We want to modify its geometry to create a new device where the reflection coefficient is quasi null. Let us fix L and $\sigma > 0$ in (68) such that \mathcal{R}^σ , the reflection coefficient appearing in (69), satisfies $\overline{\mathcal{R}^\sigma} = \mathbb{S}^\eta$. For $\kappa \in \mathbb{N}$, then define the domain

$$\Omega^\kappa := \Omega \cup \mathcal{L}^\kappa \quad \text{with } \mathcal{L}^\kappa := [1; L) \times (-\ell/2 + 2\kappa\pi/\sqrt{\lambda} + \sigma; \ell/2 + 2\kappa\pi/\sqrt{\lambda} + \sigma). \quad (70)$$

The problem

$$\begin{cases} \Delta_x u^\kappa + \lambda(1 + i\eta b)u^\kappa = 0 & \text{in } \Omega^\kappa \\ \partial_n u^\kappa = 0 & \text{on } \partial\Omega^\kappa \end{cases}$$

admits a solution of the form

$$u^\kappa = w_0^- + R^\kappa w_0^+ + \tilde{u}^\kappa,$$

where as usual \tilde{u}^κ decays exponentially at infinity and where R^κ is the reflection coefficient of interest. Let us explain why by taking $\kappa \in \mathbb{N}$ large, we can make R^κ as small as we wish. To proceed, roughly speaking, we show that when $\kappa \in \mathbb{N}$ tends to infinity, u^κ gets closer and closer to some approximation \tilde{u}^κ for which the corresponding reflection coefficient is null. Introduce ζ a smooth cut-off function such that $\zeta = 1$ for $z \leq 0$ and $\zeta = 0$ for $z \geq 1$. Then define v^κ, ζ^κ such that $v^\kappa(y, z) = v^\sigma(y, z - 2\kappa\pi/\sqrt{\lambda})$, $\zeta^\kappa(y, z) = \zeta(y, z - \kappa\pi/\sqrt{\lambda})$ and set

$$\hat{u}^\kappa := (\zeta^\kappa u^\eta + (1 - \zeta^\kappa)\overline{v^\kappa})/\overline{\mathcal{T}^\sigma}$$

(here u^η is the one introduced in (56)). Note that since $\eta > 0$, there holds $|\mathcal{R}^\sigma| = |\mathbb{S}^\eta| < 1$ and so $\mathcal{T}^\sigma \neq 0$. At this stage, we need to comment on this choice for \hat{u}^κ . First observe that in the transition region $\kappa\pi/\sqrt{\lambda} \leq z \leq \kappa\pi/\sqrt{\lambda} + 1$, the main parts of u^η and $\overline{v^\kappa}$ are the same and coincide with $w_0^+ + \mathbb{S}^\eta w_0^-$. This is due to the fact that the behaviour of \hat{u}^κ at $+\infty$ matches the one of $\overline{v^\kappa}$ at $-\infty$. Second at $+\infty$, we have $\hat{u}^\kappa = w_0^- + \dots$ where ellipsis stand for exponentially decaying terms (the reflection coefficient for \hat{u}^κ is null). Therefore we find that $E^\kappa := u^\kappa - \hat{u}^\kappa$ is an outgoing function which solves

$$\begin{cases} \Delta_x E^\kappa + \lambda(1 + i\eta b)E^\kappa = F^\kappa & \text{in } \Omega^\kappa \\ \partial_n E^\kappa = 0 & \text{on } \partial\Omega^\kappa, \end{cases} \quad (71)$$

where the discrepancy F^κ is given by

$$F^\kappa = -(2\nabla\zeta^\kappa \cdot \nabla(u^\eta - \overline{v^\kappa}) + \Delta\zeta^\kappa(u^\eta - \overline{v^\kappa}))/\overline{\mathcal{T}^\sigma}.$$

Using that u^η and $\overline{v^\kappa}$ have the same propagating behaviours on the supports of $\nabla\zeta^\kappa, \Delta\zeta^\kappa$, one finds that the L^2 norm of F^κ tends to zero as $\kappa(\in \mathbb{N}) \rightarrow +\infty$. From an additional result of uniform stability for the solution of Problem (71) with respect to the source term as $\kappa \rightarrow +\infty$, finally we deduce that the scattering coefficient of E^κ , which is equal to R^κ , tends to zero as $\kappa(\in \mathbb{N}) \rightarrow +\infty$. We emphasize that this stability result is not trivial to establish but can be derived by adapting the approach presented in [29, Ch. 5, §5.6, Thm. 5.6.3]. This shows that we can create dissipative guides for which the reflection coefficient in monomode regime is as small as we wish.

9.3 Numerical illustrations and comments

Let us give numerical examples of perfect absorbers to illustrate the method. The tools are the same as in Section 8. In practice, for given $\Omega, \mathcal{O}, \eta > 0$, we start by computing \mathbb{S}^η . Then we find via an explicit calculus values of σ such that the circle $e^{-2i\sqrt{\lambda}\sigma}\mathcal{C}(-1/2, 1/2)$ in the complex plane passes through \mathbb{S}^η . If $\mathbb{S}^\eta = \alpha e^{i\beta}$ for some $\alpha \in [0; 1)$ and $\beta \in [0; 2\pi)$, one solution is to take

$$\sigma = \frac{\arccos(-\alpha) - \beta}{2\sqrt{\lambda}} + k\pi/\sqrt{\lambda}, \quad k \in \mathbb{Z}.$$

Then we fix $\kappa \in \mathbb{N}$ large enough in the definition of Ω^κ in (70) so that the resonator of Ω and the bounded branch \mathcal{L}^κ are separated. Note that since the evanescent modes decay exponentially, we do not need to take a large κ . Finally we vary L and identify the interesting geometries by looking at the peaks of the curve $L \mapsto -\ln |R^\kappa(L)|$.

In Figure 6, we display two situations where $R^\kappa \approx 0$. We indeed observe that the scattering field $u^\kappa - w_0^-$ is approximately exponentially decaying at infinity. Each column corresponds to a different value of η . For $\eta = 1000$, the dissipative inclusion behaves mainly as a Dirichlet obstacle (see again Theorem 5.1) so that $|\mathbb{S}^\eta|$ is closed to one. In this situation, it is harder to remove the reflection. In our approach, we observe that the tuning of L becomes more delicate, the device is less robust to geometric perturbations. In Figure 7, we present the curves $L \mapsto R^\kappa(L)$ in the complex plane. The lost of robustness for large η translates into a rapid passage of $L \mapsto R^\kappa(L)$ through zero.

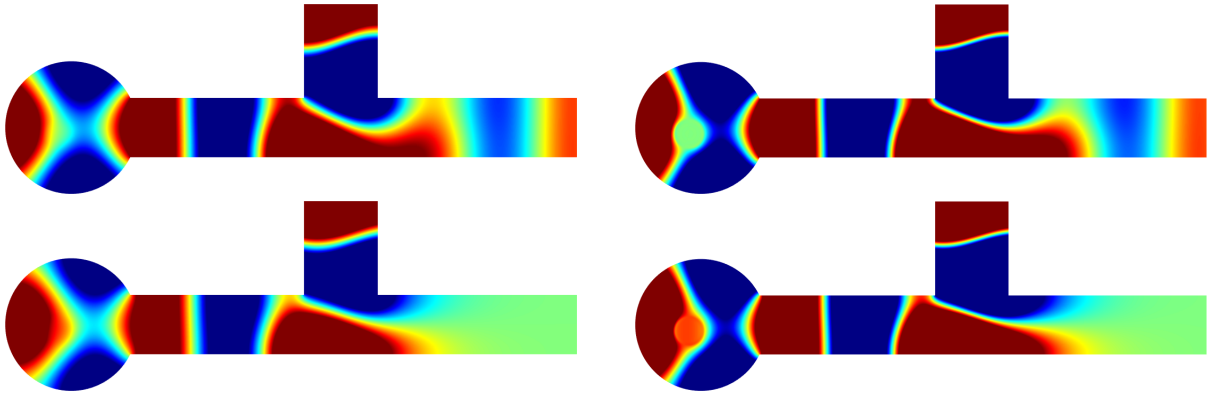


Figure 6: $\Re u^\kappa$ (first line) and $\Re (u^\kappa - w_0^-)$ (second line) in two situations where $R^\kappa \approx 0$. We take $\eta = 10$ for the left pictures and $\eta = 1000$ for the right pictures.

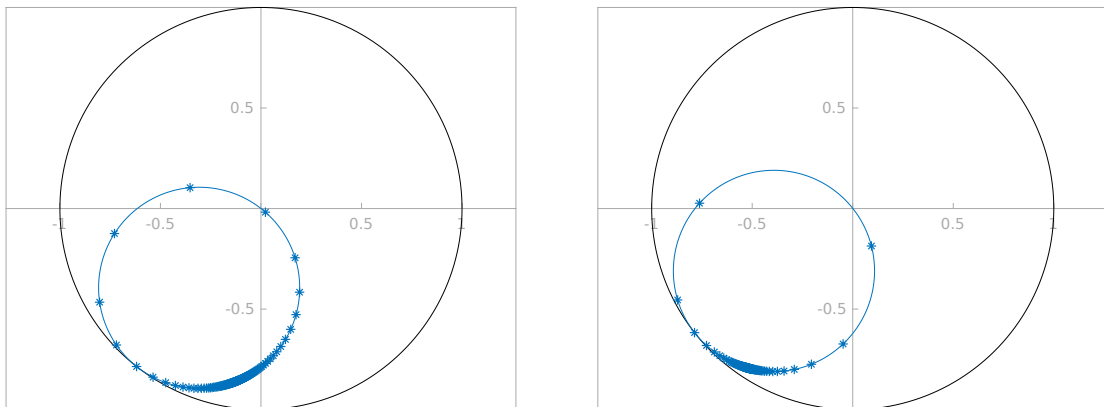


Figure 7: Curve $L \mapsto R^\kappa(L)$ in the complex plane for $L \in [0.5; 1.75]$. The geometry is the same as in Figure 6. For the left (resp. right) picture, we take $\eta = 10$ (resp. $\eta = 1000$). The black circle represents the unit circle.

In Figures 8, 9, we use a geometry different from the one introduced in §9.1 to get a dissipationless waveguide with a prescribed reflection coefficient. More precisely, we replace the bounded branch of width ℓ appearing in the definition of \mathcal{G}_L (see (58)) by a thin ligament. It is shown in [10, §4.1] that when the length of this thin ligament varies slightly around its resonance lengths $\pi(m + 1/2)/\sqrt{\lambda}$, $m \in \mathbb{N}$, the corresponding reflection coefficient approximately runs on $\mathcal{C}(-1/2, 1/2)$. Shifting the geometry in the z direction as we did in §9.1 then allows one to obtain approximately any reflection coefficient in the unit disk. Let us mention that a thin ligament of fixed length is resonant at a given wavenumber and generates large reflections only for tight bands of wavenumbers. Due to this property, a collection of ligaments of different lengths act separately at first order. In other words, their actions decouple. This is interesting to construct devices which perfectly absorb the energy of incident plane waves at different wavenumbers $\lambda_1, \dots, \lambda_N \in (0; \pi^2)$. Note that this would not be doable with the bounded branches of §9.1 whose actions do not decouple. Finally let us mention that the two mechanisms we propose above to get any reflection of $\mathcal{C}(-1/2, 1/2)$ need to be adapted to consider Dirichlet boundary conditions. The rest of the analysis would be completely similar but this first step requires to be studied (for example the thin ligament would have to be replaced by another type of resonator).

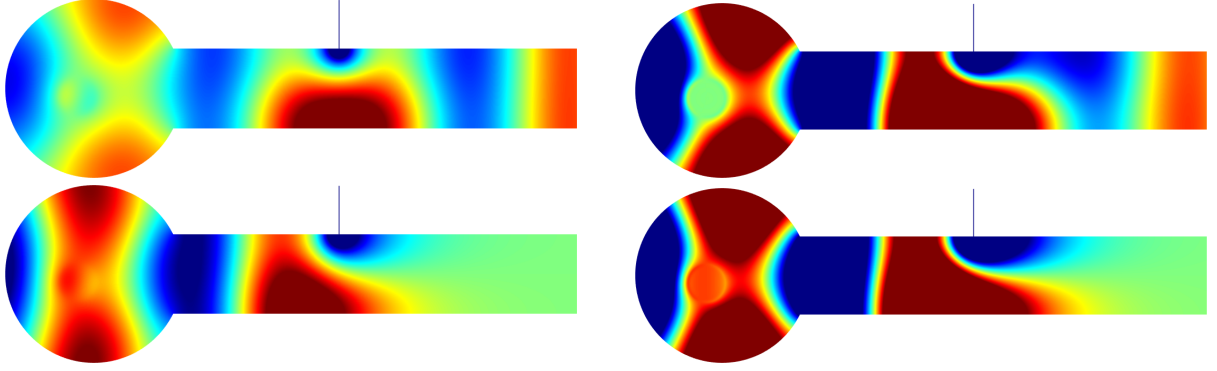


Figure 8: $\Re u^\kappa$ (first line) and $\Re (u^\kappa - w_0^-)$ (second line) in two situations where $R^\kappa \approx 0$. We take $\eta = 10$ for the left pictures and $\eta = 1000$ for the right pictures.

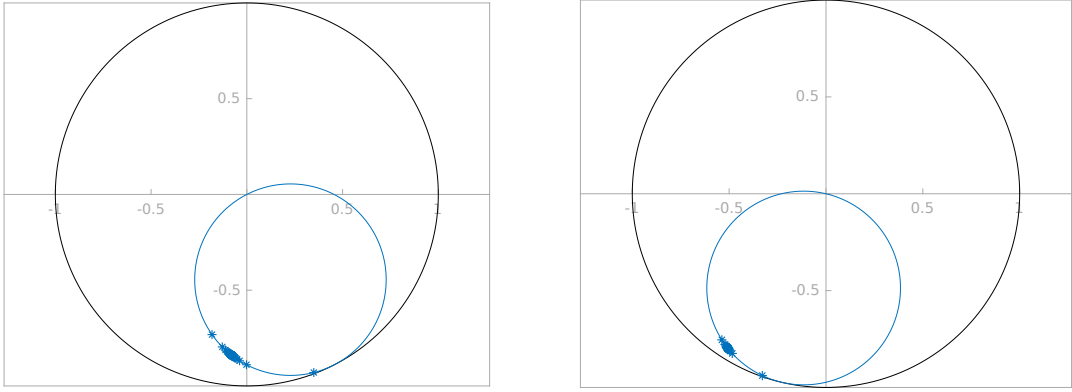


Figure 9: Curve $L \mapsto R^\kappa(L)$ in the complex plane for $L \in [0.125; 1.125]$. The geometry is the same as in Figure 8. For the left (resp. right) picture, we take $\eta = 10$ (resp. $\eta = 1000$). The black circle represents the unit circle.

10 Appendix

In this appendix, we give the proof of Theorem 6.1. To proceed, we start by presenting a few intermediate results.

1°. Hardy-type inequality. For $U \in \mathcal{C}_0^\infty([0; +\infty))$ and $\varepsilon > 0$, we can write

$$\begin{aligned}
\int_0^{+\infty} (r + \varepsilon)^{-2} |U(r)|^2 dr &= \int_0^{+\infty} (r + \varepsilon)^{-2} |U(0)|^2 dr + 2 \int_0^{+\infty} (r + \varepsilon)^{-2} \int_0^r \frac{dU(t)}{dt} U(t) dt dr \\
&\leq \frac{1}{\varepsilon} |U(0)|^2 + 2 \int_0^{+\infty} \left| \frac{dU(t)}{dt} \right| |U(t)| \int_t^{+\infty} (r + \varepsilon)^{-2} dr dt \\
&\leq \frac{1}{\varepsilon} |U(0)|^2 + 2 \int_0^{+\infty} \left| \frac{dU(t)}{dt} \right| (t + \varepsilon)^{-1} |U(t)| dt \\
&\leq \frac{1}{\varepsilon} |U(0)|^2 + 2 \int_0^{+\infty} \left| \frac{dU(t)}{dt} \right|^2 dt + \frac{1}{2} \int_0^{+\infty} (t + \varepsilon)^{-2} |U(t)|^2 dt.
\end{aligned}$$

Thus, we obtain

$$\int_0^{+\infty} (r + \varepsilon)^{-2} |U(r)|^2 dr \leq \frac{2}{\varepsilon} |U(0)|^2 + 4 \int_0^{+\infty} \left| \frac{dU(r)}{dr} \right|^2 dr. \quad (72)$$

This inequality holds also for $\varepsilon = 0$ in the case $U(0) = 0$. Then it coincides with the traditional Hardy inequality.

2°. Auxiliary problems. The analysis of Problem (22) with mixed boundary conditions leads to consider the following variational formulation

$$\left| \begin{array}{l} \text{Find } u^\infty \in \mathring{W}^{\text{out}}(\Omega_\bullet) \text{ such that} \\ (\nabla_x u^\infty, \nabla_x \varphi)_{\Omega_\bullet} - \lambda(u^\infty, \varphi)_{\Omega_\bullet} = F(\varphi), \quad \forall \varphi \in \mathcal{C}_0^\infty(\Omega_\bullet), \end{array} \right. \quad (73)$$

where $F \in \mathring{W}_{-\beta}^1(\Omega_\bullet)^*$. Here $\mathring{W}_{\pm\beta}^1(\Omega_\bullet)$ (resp. $\mathring{W}^{\text{out}}(\Omega_\bullet)$) denotes the subspace of $W_{\pm\beta}^1(\Omega_\bullet)$ (resp. $W^{\text{out}}(\Omega_\bullet)$) made of functions vanishing on $\partial\mathcal{O}$. The norms in these spaces are defined as in (6) (resp. (9)) with Ω replaced by Ω_\bullet . In particular, for $u^\infty = \chi \sum_{j=0}^{J-1} a_j w_j^+ + \tilde{u}^\infty$, we have

$$\|u^\infty; \mathring{W}^{\text{out}}(\Omega_\bullet)\| = (|a|^2 + \|\tilde{u}^\infty; W_\beta^1(\Omega_\bullet)\|^2)^{1/2}. \quad (74)$$

The Hardy inequality (72) with $\varepsilon = 0$, integrated over the surface $\partial\mathcal{O}$, together with the Dirichlet condition $u^\infty = \tilde{u}^\infty = 0$ on $\partial\mathcal{O}$, imply that the norm (74) is equivalent to the norm

$$\|u^\infty; \mathring{W}_\gamma^{\text{out}}(\Omega_\bullet)\| = (|a|^2 + \|\varrho^\gamma e^{\beta z} \nabla_x \tilde{u}^\infty; L^2(\Omega_\bullet)\|^2 + \|\varrho^{\gamma-1} e^{\beta z} \tilde{u}^\infty; L^2(\Omega_\bullet)\|^2)^{1/2} \quad (75)$$

for $\gamma = 0$. Here ϱ is the distance function introduced in (37). For the analysis below, we also introduce the space $\mathring{W}_{\beta,\gamma}^1(\Omega_\bullet)$ defined as the completion of $\mathcal{C}_0^\infty(\Omega_\bullet)$ for the norm

$$\|\varphi; \mathring{W}_{\beta,\gamma}^1(\Omega_\bullet)\| = (\|\varrho^\gamma e^{\beta z} \nabla_x \varphi; L^2(\Omega_\bullet)\|^2 + \|\varrho^{\gamma-1} e^{\beta z} \varphi; L^2(\Omega_\bullet)\|^2)^{1/2}. \quad (76)$$

In the following, we shall need to work with the following problem

$$\left| \begin{array}{l} \text{Find } v^\eta \in \mathring{H}^1(\Xi) \text{ such that} \\ -\Delta_x v^\eta - \lambda(1 + i\eta b)v^\eta = f \text{ in } \Xi, \end{array} \right. \quad (77)$$

where Ξ is a bounded domain such that $\bar{\Xi} \subset \Omega$ and $\bar{\mathcal{O}} \subset \Xi$. Additionally we will choose the “width” of the annulus $\Xi_\bullet = \Xi \setminus \bar{\mathcal{O}}$ small enough so that the first eigenvalue μ_0 of the mixed boundary value problem

$$\left| \begin{array}{l} -\Delta_x v = \mu v \text{ in } \Xi_\bullet \\ v = 0 \text{ on } \partial\Xi, \quad \partial_n v = 0 \text{ on } \partial\mathcal{O}, \end{array} \right. \quad (78)$$

is larger than λ (note that this is always possible). In (77), $\mathring{H}^1(\Xi)$ denotes the subspace of $H^1(\Xi)$ made of functions vanishing on $\partial\Xi$. The variational formulation of (77) writes

$$\left| \begin{array}{l} \text{Find } v^\eta \in \mathring{H}^1(\Xi) \text{ such that} \\ \mathbf{a}_\Xi(v^\eta, \phi) = F(\phi), \quad \forall \phi \in \mathring{H}^1(\Xi), \end{array} \right. \quad (79)$$

where $\mathbf{a}_\Xi(v^\eta, \phi) = (\nabla_x v^\eta, \nabla_x \phi)_\Xi - \lambda(v^\eta, \phi)_\Xi - i\eta(bv^\eta, \phi)_\mathcal{O}$ and $F \in \mathring{H}^1(\Xi)^*$. Using the Lax-Milgram lemma, one can show that Problem (79) is uniquely solvable. In particular, to show the coercivity of $\mathbf{a}_\Xi(\cdot, \cdot)$, one can write, for all $v \in \mathring{H}^1(\Xi)$,

$$\Re \mathbf{a}_\Xi(v, v) = \|\nabla_x v; L^2(\Xi)\|^2 - \lambda \|v; L^2(\Xi)\|^2, \quad \Im \mathbf{a}_\Xi(v, v) \geq c_b \eta \|v; L^2(\mathcal{O})\|^2, \quad c_b > 0,$$

and use the fact that $\|\nabla_x v; L^2(\Xi_\bullet)\|^2 \geq \mu_0 \|v; L^2(\Xi_\bullet)\|^2$ with $\mu_0 > \lambda$, to get

$$|\mathbf{a}_\Xi(v, v)| \geq c (\|v; H^1(\Xi)\|^2 + \eta \|v; L^2(\mathcal{O})\|^2), \quad \forall \eta \geq \eta_0 > 0. \quad (80)$$

This estimate together with the trace inequality (46) imply

$$|\mathbf{a}_\Xi(v, v)| \geq c \sqrt{\eta} \|v; L^2(\partial\mathcal{O})\|^2. \quad (81)$$

Using (81) in the Hardy inequality (72) with $\varepsilon = \eta^{-1/2} > 0$, we obtain

$$|\mathbf{a}_\Xi(v, v)| \geq c \|(\varrho + \eta^{-1/2})^{-1} v; L^2(\Xi_\bullet)\|^2. \quad (82)$$

Finally, combining the above relations leads to the following estimate for the solution $v^\eta \in \dot{H}^1(\Xi)$ of the problem (79)

$$\|v^\eta; \dot{H}_{\eta,0}^1(\Xi)\| \leq c \|F; \dot{H}_{\eta,0}^1(\Xi)^*\|, \quad (83)$$

where the constant $c > 0$ is independent of the functional $F \in \dot{H}^1(\Xi)^*$ and of $\eta \geq \eta_0 > 0$. Here the space $\dot{H}_{\eta,\gamma}^1(\Xi)$, with the new weight index $\gamma \in \mathbb{R}$, stands for the Sobolev space $\dot{H}^1(\Xi)$ endowed with the norm

$$\begin{aligned} \|\varphi; \dot{H}_{\eta,\gamma}^1(\Xi)\| &= \left(\|(\varrho + \eta^{-1/2})^\gamma \nabla_x \varphi; L^2(\Xi_\bullet)\|^2 + \eta^{-\gamma} \|\nabla_x \varphi; L^2(\mathcal{O})\|^2 \right. \\ &\quad \left. \|(\varrho + \eta^{-1/2})^{\gamma-1} \varphi; L^2(\Xi_\bullet)\|^2 + \eta^{1-\gamma} \|\varphi; L^2(\mathcal{O})\|^2 \right)^{1/2}. \end{aligned} \quad (84)$$

3°. Varying the weight index. Let us show that the estimate (83) is still valid for an open interval of indices γ centered at zero. Define the weight functions $R_{\pm\gamma}^\eta$ such that

$$R_{\pm\gamma}^\eta(x) = \begin{cases} (\varrho(x) + \eta^{-1/2})^{\pm\gamma} & \text{in } \Xi_\bullet \\ \eta^{\mp\gamma/2} & \text{in } \mathcal{O}. \end{cases} \quad (85)$$

Note that $R_{\pm\gamma}^\eta$ are piecewise smooth functions which are continuous at $\partial\mathcal{O}$. Set

$$V^\eta = R_\gamma^\eta v^\eta, \quad \Phi = R_{-\gamma}^\eta \phi. \quad (86)$$

Observe that V^η, Φ belong to $\dot{H}^1(\Xi)$ and that we have $\nabla_x R_{\pm\gamma}^\eta = 0$ in \mathcal{O} as well as

$$\begin{aligned} |\nabla_x R_{\pm\gamma}^\eta(x)| &\leq |\gamma| (\varrho(x) + \eta^{-1/2})^{\pm\gamma-1} |\nabla_x \varrho(x)| \\ &\leq C |\gamma| R_{\pm\gamma}^\eta(x) (\varrho(x) + \eta^{-1/2})^{-1} \quad \text{in } \Xi_\bullet. \end{aligned} \quad (87)$$

Using this estimate and the fact that there holds $v^\eta = R_{-\gamma}^\eta V^\eta$, one establishes the inequalities

$$\|v^\eta; \dot{H}_{\eta,\gamma}^1(\Xi)\| \leq c_\gamma \|V^\eta; \dot{H}_{\eta,0}^1(\Xi)\| \leq C_\gamma \|v^\eta; \dot{H}_{\eta,\gamma}^1(\Xi)\|, \quad (88)$$

where the constants c_γ, C_γ are independent of η and v^η . Making the substitution $v^\eta = R_\gamma^\eta V^\eta$, $\phi = R_{-\gamma}^\eta \Phi$ in the integral identity (79), we get

$$\mathfrak{a}_\Xi(V^\eta, \Phi) + \tilde{\mathfrak{a}}_\Xi(V^\eta, \Phi) = F(R_{-\gamma}^\eta \Phi), \quad \forall \Phi \in \dot{H}^1(\Xi),$$

with

$$\tilde{\mathfrak{a}}_\Xi(V^\eta, \Phi) = (\nabla_x V^\eta, \Phi R_{-\gamma}^\eta \nabla_x R_\gamma^\eta)_{\Xi_\bullet} + (V^\eta R_\gamma^\eta \nabla_x R_{-\gamma}^\eta, \nabla_x \Phi)_{\Xi_\bullet} + (V^\eta R_\gamma^\eta \nabla_x R_{-\gamma}^\eta, \Phi R_{-\gamma}^\eta \nabla_x R_\gamma^\eta)_{\Xi_\bullet}.$$

Exploiting (87) as well as (80)–(82), one finds

$$|\tilde{\mathfrak{a}}_\Xi(V^\eta, \Phi)| \leq C |\gamma| \|V^\eta; \dot{H}_{\eta,0}^1(\Xi)\| \|\Phi; \dot{H}_{\eta,0}^1(\Xi)\| \leq C |\gamma| |\mathfrak{a}_\Xi(V^\eta, V^\eta)|^{1/2} |\mathfrak{a}_\Xi(\Phi, \Phi)|^{1/2}.$$

Using again (88), this yields the following assertion

Proposition 10.1. *There exist $\eta_0 > 0$ and $\gamma_0 > 0$ such that for $\gamma \in (-\gamma_0, \gamma_0)$, the solution $v^\eta \in \dot{H}^1(\Xi)$ of Problem (79) with the functional $F \in \dot{H}^1(\Xi)^*$ satisfies the estimate*

$$\|v^\eta; \dot{H}_{\eta,\gamma}^1(\Xi)\| \leq c \|F; \dot{H}_{\eta,-\gamma}^1(\Xi)^*\|, \quad (89)$$

where the coefficient c does not depend on $\eta \geq \eta_0$ or γ .

A similar trick allows one to verify the next claim.

Proposition 10.2. *Assume that Problem (22) has no trapped mode solutions. Then there exists $\gamma_0 > 0$ such that, for $\gamma \in (-\gamma_0; \gamma_0)$, the integral identity for Problem (73) in the space $\dot{W}_\gamma^{\text{out}}(\Omega_\bullet)$ (see (75)), namely*

$$-\int_{\Omega_\bullet} (\Delta + \lambda) \left(\chi \sum_{j=0}^{J-1} a_j w_j^+ \right) \bar{\varphi} dx + (\nabla_x \tilde{u}^\infty, \nabla_x \varphi)_{\Omega_\bullet} - \lambda(\tilde{u}^\infty, \varphi)_{\Omega_\bullet} = F(\varphi) \quad (90)$$

for all $\varphi \in \dot{W}_{-\beta, -\gamma}^1(\Omega_\bullet)$, has a unique solution $u^\infty \in \dot{W}_\gamma^{\text{out}}(\Omega_\bullet)$ with the estimate

$$\|u^\infty; \dot{W}_\gamma^{\text{out}}(\Omega_\bullet)\| \leq c \|F; \dot{W}_{-\beta, -\gamma}^1(\Omega_\bullet)^*\|.$$

Here the constant c is independent of F and γ . Moreover, when $F \in \dot{W}_{-\beta, -\gamma}^1(\Omega_\bullet)^* \cap \dot{W}_{-\beta, 0}^1(\Omega_\bullet)^*$, this solution belongs to $\dot{W}^{\text{out}}(\Omega_\bullet)$ and therefore coincides with the unique solution in this space.

Let us mention that the result of Proposition 10.2 can be made stronger by methods of the general theory presented in [26, 30, 31] (see also [39, Ch. 8 § 4] and other papers) concerning elliptic boundary value problems in domains with piecewise smooth boundaries. More precisely, introduce the bounded operator $\mathcal{A}_{\beta, \gamma}^\infty : \dot{W}_\gamma^{\text{out}}(\Omega_\bullet) \rightarrow \dot{W}_{-\beta, -\gamma}^1(\Omega_\bullet)^*$ such that

$$\langle \mathcal{A}_{\beta, \gamma}^\infty u^\infty, \varphi \rangle_{\Omega_\bullet} = -\int_{\Omega_\bullet} (\Delta + \lambda) \left(\chi \sum_{j=0}^{J-1} a_j w_j^+ \right) \bar{\varphi} dx + (\nabla_x \tilde{u}^\infty, \nabla_x \varphi)_{\Omega_\bullet} - \lambda(\tilde{u}^\infty, \varphi)_{\Omega_\bullet} \quad (91)$$

for all $u^\infty \in \dot{W}_\gamma^{\text{out}}(\Omega_\bullet)$, $\varphi \in \dot{W}_{-\beta, -\gamma}^1(\Omega_\bullet)$. Then regarding the smooth surface $\partial\mathcal{O}$ as a $(d-1)$ -dimensional edge and applying the results of the above-mentioned references, one can establish the following assertion.

Theorem 10.3. *Assume that β satisfies (7) and that*

$$\gamma \in (-1; 1). \quad (92)$$

Then the operator $\mathcal{A}_{\beta, \gamma}^\infty : \dot{W}_\gamma^{\text{out}}(\Omega_\bullet) \rightarrow \dot{W}_{-\beta, -\gamma}^1(\Omega_\bullet)^*$ defined in (91) is Fredholm of index zero.

We emphasize that in contrast to Proposition 10.2, Theorem 10.3 does not require the absence of trapped modes. It is worth mentioning that the requirement $\gamma > -1$ in (92) guarantees that all smooth functions vanishing on $\partial\mathcal{O}$ and having compact support are contained in $\dot{W}_{\beta, \gamma}^1(\Omega_\bullet)$, while the restriction $\gamma < 1$ excludes from this space the functions with singularities of the order $O(\varrho^{-1})$ on $\partial\mathcal{O}$. Examples of such functions are Green's functions having a singular point on $\partial\mathcal{O}$ and integrated over $\partial\mathcal{O}$ with a smooth density. In the following, Proposition 10.2 will be sufficient for our needs.

4°. Proving the solvability of the original problem for large η . Introduce the bounded operator $\mathcal{B}_\beta^\eta : W_\eta^{\text{out}}(\Omega) \rightarrow W_{-\beta, \eta}^1(\Omega)^*$ (see the definition of these spaces in (39), (38)) such that

$$\langle \mathcal{B}_\beta^\eta u, v \rangle_\Omega = -\int_\Omega (\Delta + \lambda(1 + i\eta b)) \left(\chi \sum_{j=0}^{J-1} a_j w_j^+ \right) \bar{v} dx + \int_{\partial\Omega} \partial_n \left(\chi \sum_{j=0}^{J-1} a_j w_j^+ \right) \bar{v} dx + \mathbf{a}(\tilde{u}, v)$$

for all $u \in W_\eta^{\text{out}}(\Omega)$, $v \in W_{-\beta, \eta}^1(\Omega)$. Observe that the action of \mathcal{B}_β^η is the same as that of the operator $\mathcal{A}_\beta^\eta : W^{\text{out}}(\Omega) \rightarrow W_{-\beta}^1(\Omega)^*$ introduced in (14). However it is measured with different norms, this is why we give a different name. According to Proposition 3.1 item 2), as well (80), (82), we know that for all $\eta > 0$, \mathcal{B}_β^η is an isomorphism. Therefore to show Theorem 6.1, it remains to prove that \mathcal{B}_β^η is uniformly invertible for large η . To proceed, we will construct an ‘‘almost inverse’’ operator for \mathcal{B}_β^η , that is a linear and continuous mapping

$$\mathcal{T}_\beta^\eta : W_{-\beta, \eta}^1(\Omega)^* \rightarrow W_\eta^{\text{out}}(\Omega) \quad (93)$$

such that

$$\|\mathcal{B}_\beta^\eta \mathcal{T}_\beta^\eta - \text{Id}; W_{-\beta,\eta}^1(\Omega)^* \rightarrow W_{-\beta,\eta}^1(\Omega)^*\| \leq c\eta^{-\delta}. \quad (94)$$

Here Id is the identity mapping, δ is some positive number and c is independent of $\eta \geq \eta_0$ for some $\eta_0 > 0$. This will guarantee that $\mathcal{B}_\beta^\eta \mathcal{T}_\beta^\eta$ is an isomorphism for η large enough and ensure that $(\mathcal{B}_\beta^\eta)^{-1}$ is uniformly continuous as we will explain at the end of the proof.

To establish such a result, we apply a trick proposed in [28], see also [29, Ch. 5], [36, 9] and others for its usage. For a functional $F \in W_{-\beta,\eta}^1(\Omega)^*$, we set

$$\begin{aligned} F_\bullet^\eta(\varphi) &= F((1 - \zeta^\eta)\varphi), & \forall \varphi \in \dot{W}_{-\beta,0}^1(\Omega_\bullet) \\ F_\circ^\eta(\phi) &= F(\zeta^\eta\phi), & \forall \phi \in \dot{H}_{\eta,0}^1(\Xi), \end{aligned} \quad (95)$$

where ζ^η is a cut-off function which is equal to 1 in the $\eta^{-1/4}$ -neighborhood of $\bar{\mathcal{O}}$ and vanishes outside its $2\eta^{-1/4}$ -neighborhood.

First, since we have

$$\text{supp } F_\bullet^\eta \subset \{x \in \bar{\Omega} \mid \varrho(x) \geq \eta^{-1/4}\},$$

we know that $F_\bullet^\eta \in \dot{W}_{-\beta,\gamma}^1(\Omega_\bullet)^*$ for all $\gamma \in \mathbb{R}$. Additionally, for $\delta \geq 0$, using that $1 \leq \eta^\delta \rho^{4\delta}$ as well as $(\varrho + \eta^{-1/2})^{-1} \leq \varrho^{-1}$ on the support of $(1 - \zeta^\eta)$, we can write

$$\begin{aligned} |F_\bullet^\eta(\varphi)| &\leq c\|F; W_{-\beta,\eta}^1(\Omega)^*\| \|(1 - \zeta^\eta)\varphi; W_{-\beta,\eta}^1(\Omega)\| \\ &\leq C\eta^\delta \|F; W_{-\beta,\eta}^1(\Omega)^*\| \|\varphi; \dot{W}_{-\beta,4\delta}^1(\Omega_\bullet)\|. \end{aligned}$$

Thus for all $\delta \geq 0$, there holds

$$\|F_\bullet^\eta; \dot{W}_{-\beta,4\delta}^1(\Omega_\bullet)^*\| \leq C\eta^\delta \|F; W_{-\beta,\eta}^1(\Omega)^*\|. \quad (96)$$

Second, in view of the inclusion

$$\text{supp } F_\circ^\eta \subset \{x \in \Xi : \text{dist}(x, \mathcal{O}) \leq 2\eta^{-1/4}\}, \quad (97)$$

we can write

$$\begin{aligned} |F_\circ^\eta(\phi)| &\leq c\|F; W_{-\beta,\eta}^1(\Omega)^*\| \|\zeta^\eta\phi; W_{-\beta,\eta}^1(\Omega)\| \\ &\leq c\|F; W_{-\beta,\eta}^1(\Omega)^*\| \|\phi; \dot{H}_{\eta,0}^1(\Xi)\| \\ &\leq C\eta^{-\delta} \|F; W_{-\beta,\eta}^1(\Omega)^*\| \|\phi; \dot{H}_{\eta,-4\delta}^1(\Xi)\|. \end{aligned}$$

Above the small coefficient $\eta^{-\delta}$ appears for the following two reasons: in the definition (84) of the norm of the space $\dot{H}_{\eta,\gamma}^1(\Xi)$ with $\gamma = -4\delta$, the norms on the subdomain \mathcal{O} are multiplied by the factor $\eta^{4\delta} \geq c\eta^\delta$ and the norms on the subdomain Ξ_\bullet gain the weight $(\varrho(x) + \eta^{-1/2})^{-4\delta}$, which exceeds $c\eta^\delta$ for $x \in \Xi_\bullet \cap \text{supp } F_\circ^\eta$, according to (97). Thus for all $\delta \geq 0$, there holds

$$\|F_\circ^\eta; \dot{H}_{\eta,-4\delta}^1(\Xi)\| \leq C\eta^{-\delta} \|F; W_{-\beta,\eta}^1(\Omega)^*\|. \quad (98)$$

Now assume $\delta \geq 0$ to be small enough so that $4\delta \in [0; \gamma_0)$ where γ_0 is the smallest of the two weight indices appearing in Propositions 10.1 and 10.2 (recall that in this section we assume that trapped modes do not exist for Problem (22)). This guarantees the existence of solutions

$$u_\bullet^\eta \in \dot{W}_{-4\delta}^{\text{out}}(\Omega_\bullet) \quad \text{and} \quad u_\circ^\eta \in \dot{H}_{\eta,4\delta}^1(\Xi) \quad (99)$$

to the problems (73) with $F = F_\bullet^\eta$ and (79) with $F = F_\circ^\eta$ respectively. Moreover, we get the estimates

$$\begin{aligned} \|u_\bullet^\eta; \dot{W}_{-4\delta}^{\text{out}}(\Omega_\bullet)\| &\leq c\|F_\bullet^\eta; \dot{W}_{-\beta,4\delta}^1(\Omega_\bullet)^*\| \leq C\eta^\delta \|F; W_{-\beta,\eta}^1(\Omega)^*\|, \\ \|u_\circ^\eta; \dot{H}_{\eta,4\delta}^1(\Xi)\| &\leq c\|F_\circ^\eta; \dot{H}_{\eta,-4\delta}^1(\Xi)\| \leq C\eta^{-\delta} \|F; W_{-\beta,\eta}^1(\Omega)^*\|. \end{aligned} \quad (100)$$

Finally we define the function $\mathcal{T}_\beta^\eta F$ such that

$$\mathcal{T}_\beta^\eta F = \zeta_\bullet^\eta u_\bullet^\eta + \zeta_\circ u_\circ^\eta,$$

where the cut-off functions $\zeta_\bullet^\eta \in \mathcal{C}_0^\infty(\bar{\Omega})$ and $\zeta_\circ \in \mathcal{C}_0^\infty(\Xi)$ are such that

$$\zeta_\bullet^\eta(x) = \begin{cases} 1 & \text{for } \text{dist}(x, \mathcal{O}) \geq 2\eta^{-1/2} \\ 0 & \text{for } \text{dist}(x, \mathcal{O}) \leq \eta^{-1/2}, \end{cases} \quad \zeta_\circ(x) = 1 \text{ for } \text{dist}(x, \mathcal{O}) \leq d_\circ \quad (101)$$

Here we choose $d_\circ > 0$ such that the d_\circ -neighborhood of $\bar{\mathcal{O}}$ is contained in Ξ . However note that ζ_\circ is independent of η . Contrary to the pair $\zeta^\eta, 1 - \zeta^\eta$ introduced in (95), the cut-off functions $\zeta_\bullet^\eta, \zeta_\circ$ do not constitute a partition of unity because their supports overlap. This is a crucial ingredient in the method to obtain the desired estimate (94).

Observe first that by using (100) with $\delta = 0$, we obtain the equality

$$\|\mathcal{T}_\beta^\eta F; W_\eta^{\text{out}}(\Omega)\| \leq C \|F; W_{-\beta, \eta}^1(\Omega)^*\| \quad (102)$$

which will be useful at the end of the proof. Now let us estimate $\|\mathcal{B}_\beta^\eta \mathcal{T}_\beta^\eta - \text{Id}; W_{-\beta, \eta}^1(\Omega)^* \rightarrow W_{-\beta, \eta}^1(\Omega)^*\|$, that is the left-hand side of (94). A direct calculus yields, for all $v \in \mathcal{C}_0^\infty(\bar{\Omega})$,

$$\begin{aligned} & (\nabla_x(\zeta_\bullet^\eta u_\bullet^\eta + \zeta_\circ u_\circ^\eta), \nabla_x v)_\Omega - \lambda((1 + i\eta b)(\zeta_\bullet^\eta u_\bullet^\eta + \zeta_\circ u_\circ^\eta), v)_\Omega - F(v) \\ &= (\nabla_x u_\bullet^\eta, \nabla_x(\zeta_\bullet^\eta v))_{\Omega_\bullet} - \lambda(u_\bullet^\eta, \zeta_\bullet^\eta v)_{\Omega_\bullet} + I_\bullet^\eta(v) \\ & \mathbf{a}_\Xi(u_\circ^\eta, \zeta_\circ v) + I_\circ^\eta(v) - F(v), \end{aligned} \quad (103)$$

with

$$\begin{aligned} I_\bullet^\eta(v) &= (u_\bullet^\eta \nabla_x \zeta_\bullet^\eta, \nabla_x v)_{\Omega_\bullet} - (\nabla_x u_\bullet^\eta, v \nabla_x \zeta_\bullet^\eta)_{\Omega_\bullet} \\ I_\circ^\eta(v) &= (u_\circ^\eta \nabla_x \zeta_\circ, \nabla_x v)_\Xi - (\nabla_x u_\circ^\eta, v \nabla_x \zeta_\circ)_\Xi. \end{aligned} \quad (104)$$

Next we work on each of the terms of (103). First, by definition of $u_\bullet^\eta, u_\circ^\eta$, we observe that

$$\begin{aligned} & (\nabla_x u_\bullet^\eta, \nabla_x(\zeta_\bullet^\eta v))_{\Omega_\bullet} - \lambda(u_\bullet^\eta, \zeta_\bullet^\eta v)_{\Omega_\bullet} = F_\bullet^\eta(\zeta_\bullet^\eta v) = F((1 - \zeta^\eta)\zeta_\bullet^\eta v) = F((1 - \zeta^\eta)v) \\ & \mathbf{a}_\Xi(u_\circ^\eta, \zeta_\circ v) = F_\circ^\eta(\zeta_\circ v) = F(\zeta^\eta \zeta_\circ v) = F(\zeta^\eta v). \end{aligned} \quad (105)$$

Here we used that $(1 - \zeta^\eta)\zeta_\bullet^\eta = 1 - \zeta^\eta$ and $\zeta^\eta \zeta_\circ = \zeta^\eta$ due to the definition of the cut-off functions. Thus the sum of the terms (105) compensate $F(v)$ in (103). Therefore it remains only to estimate the quantities $I_\bullet^\eta(v), I_\circ^\eta(v)$ defined in (104).

First, from the definition of ζ_\circ in (101), we see that $\text{supp } |\nabla_x \zeta_\circ| \subset \{x \in \bar{\Xi} : \text{dist}(x, \mathcal{O}) \geq d_\circ\}$ so that the integration in $I_\circ^\eta(v)$ is performed at distance from \mathcal{O} . Using (84), (100), this allows us to write

$$\begin{aligned} |I_\circ^\eta(v)| &\leq c \|v; \dot{H}_{\eta, 0}^1(\text{supp } |\nabla_x \zeta_\circ|)\| \|u_\circ^\eta; \dot{H}_{\eta, 0}^1(\text{supp } |\nabla_x \zeta_\circ|)\| \\ &\leq c \|v; W_{-\beta, \eta}^1(\Omega)\| \|u_\circ^\eta; \dot{H}_{\eta, 4\delta}^1(\Xi)\| \\ &\leq c \eta^{-\delta} \|v; W_{-\beta, \eta}^1(\Omega)\| \|F; W_{-\beta, \eta}^1(\Omega)^*\|. \end{aligned} \quad (106)$$

Second, to assess the quantity $I_\bullet^\eta(v)$, we observe that according to (101), we have

$$\text{supp } |\nabla \zeta_\bullet^\eta| \subset \{x \in \Xi \mid \text{dist}(x, \mathcal{O}) \in [\eta^{-1/2}; 2\eta^{-1/2}]\}.$$

Therefore on $\text{supp } |\nabla \zeta_\bullet^\eta|$ the weight 1 which appears in $\dot{W}^{\text{out}}(\Omega_\bullet)$ is bounded by $2^{4\delta} \eta^{-2\delta}$ times $\varrho^{-4\delta}$ which is the weight in the norm of $\dot{W}_{-4\delta}^{\text{out}}(\Omega_\bullet)$ (see (75)). This allows us to write, using also (100),

$$\begin{aligned} |I_\bullet^\eta(v)| &\leq c \|v; W_{-\beta, \eta}^1(\Omega)\| \|\tilde{u}_\bullet^\eta; \dot{W}^{\text{out}}(\text{supp } |\nabla \zeta_\bullet^\eta|)\| \\ &\leq c \eta^{-2\delta} \|v; W_{-\beta, \eta}^1(\Omega)\| \|u_\bullet^\eta; \dot{W}_{-4\delta}^{\text{out}}(\Omega_\bullet)\| \\ &\leq c \eta^{-\delta} \|v; W_{-\beta, \eta}^1(\Omega)\| \|F; W_{-\beta, \eta}^1(\Omega)^*\|. \end{aligned} \quad (107)$$

Here we took into account the coincidence of \tilde{u}_\bullet^η and u_\bullet^η on $\text{supp}|\nabla\zeta_\bullet^\eta|$. Note above that the fact that $\text{supp}|\nabla\zeta_\bullet^\eta| \neq \text{supp}|\nabla\zeta^\eta|$ is essential to get the $\eta^{-\delta}$ at the end of the day.

Gathering (106) and (107), finally we obtain (94). It is time now to detail the final step. Denote by $\mathcal{R}_\beta^\eta : W_{-\beta,\eta}^1(\Omega)^* \rightarrow W_{-\beta,\eta}^1(\Omega)^*$ the remainder $\mathcal{R}_\beta^\eta := \mathcal{B}_\beta^\eta \mathcal{T}_\beta^\eta - \text{Id}$. From (94), we know that $\mathcal{T}_\beta^\eta (\text{Id} + \mathcal{R}_\beta^\eta)^{-1}$ is a right inverse for \mathcal{B}_β^η , i.e. we have $\mathcal{B}_\beta^\eta \mathcal{T}_\beta^\eta (\text{Id} + \mathcal{R}_\beta^\eta)^{-1} = \text{Id}$ for η large enough. Therefore for a given $F \in W_{-\beta}^1(\Omega)^*$, the function $u \in W_\eta^{\text{out}}(\Omega)$ satisfying $\mathcal{A}_\beta^\eta u = \mathcal{B}_\beta^\eta u = F$ is given by $u = \mathcal{T}_\beta^\eta (\text{Id} + \mathcal{R}_\beta^\eta)^{-1} F$. Using (102), finally we can write

$$\|u; W_\eta^{\text{out}}(\Omega)\| \leq c \|(\text{Id} + \mathcal{R}_\beta^\eta)^{-1} F; W_{-\beta,\eta}^1(\Omega)^*\| \leq C \|F; W_{-\beta,\eta}^1(\Omega)^*\|,$$

which completes the proof of Theorem 6.1.

5°. Trapped modes. In the statement of the uniform stability estimate of Theorem 6.1, we assumed that the limit Problem (22) does not have trapped modes. Let us explain how to proceed when this assumption is not met. To set ideas we assume that the space of trapped modes is of dimension K , spanned by some functions $m_1^{\text{tr}}, \dots, m_K^{\text{tr}} \in W_\beta^1(\Omega_\bullet) \subset H^1(\Omega_\bullet)$. First, as shown in Section 5, trapped modes do not affect the asymptotics of the scattering matrix because the diffraction solutions can be subject to the orthogonality conditions (24). However we need to comment the construction of the almost inverse operator \mathcal{T}_β^η in (93) which is used in deriving the a priori estimate. Since Problem (73) is no more uniquely solvable, we modify the representation of functions belonging to the space $W_\eta^{\text{out}}(\Omega)$ by setting

$$u = \eta^{1/2} \sum_{k=1}^K c_k M_k^{\text{tr}} + \chi \sum_{j=0}^{J-1} a_j w_j^+ + \tilde{u}, \quad (108)$$

where the M_k^{tr} are defined as follows:

$$M_k^{\text{tr}}(x) = \begin{cases} m_k^{\text{tr}}(x) + \eta^{-1/2} m'_k(x), & x \in \Omega_\bullet \\ \eta^{-1/2} \chi_{\mathcal{O}}(x) E(\sqrt{\eta}n, s) \partial_n m_k^{\text{tr}}|_{\partial\mathcal{O}}(s), & x \in \mathcal{O}. \end{cases}$$

Above $m'_k \in H^1(\Omega)$ are some functions supported in Ξ and satisfying the boundary condition

$$m'_k(x) = E(0, s) \partial_n m_k^{\text{tr}}|_{\partial\mathcal{O}}(s), \quad x \in \partial\mathcal{O},$$

so that there holds $M_k^{\text{tr}} \in H^1(\overline{\Omega})$. The coefficients c_1, \dots, c_K are needed to fulfil the compatibility conditions (24) in Problem (73) for u_\bullet^η (see (99)). The procedure is similar to the one employed in Section 5. The modification (108) requires the following new definition of the norm in the space $W_\eta^{\text{out}}(\Omega)$,

$$\|u; W_\eta^{\text{out}}(\Omega)\| = \inf \left\{ \eta^{1/2} \sum_{k=1}^K |c_k| + \sum_{j=0}^{J-1} |a_j| + \|\tilde{u}; W_{\beta,\eta}^1(\Omega)\| \right\},$$

where the infimum is taken over all representations (108). Notice that $M_k^{\text{tr}} \in W_{\beta,\eta}^1(\Omega)$ and therefore representation (108) is not unique. This is the very reason for the transition from the Hilbert norm (39) to the Banach norm (108). All other steps in the procedure remain the same.

References

- [1] M.S. Agranovich, M.I. Vishik. Elliptic problems with a parameter and parabolic problems of general type, *Uspekhi Mat. Nauk.* 19:3, 53–161, 1963 (English trans.: *Russ. Math. Surv.* 19, 53–157, 1964).
- [2] G. Alessandrini, L. Rondi, E. Rosset, S. Vessella. The stability for the Cauchy problem for elliptic equations, *Inverse problems*, 25:12, 123004, 2009.

- [3] N.Kh. Arutyunyan, S.A. Nazarov. On singularities of the stress function at the corner points of the transverse cross-section of a twisted bar with a thin reinforcing layer, *Prikl. Mat. Mekh.*, 47:1, 122–132, 1983. (English transl.: *J. Appl. Math. Mech.*, 47, 94–103, 1984)
- [4] G. Beck, S. Imperiale, P. Joly. Asymptotic modelling of skin-effects in coaxial cables, *SN Part. Diff. Equat. and Appl.*, 1:6, 1–34, 2020.
- [5] L. Bers, F. John, M. Schechter. *Partial differential equations*. John Wiley, New York, 1964.
- [6] F. Blanc, S.A. Nazarov. Asymptotics of solutions to the Poisson problem in a perforated domain with corners, *J. Math. Pures. Appl.*, 76:10, 893–911, 1997.
- [7] A.-S. Bonnet-Ben Dhia, G. Legendre. An alternative to Dirichlet-to-Neumann maps for waveguides, *C. R. Acad. Sci., Ser. I.*, 349:17-18, 1005–1009, 2011.
- [8] V.F. Butuzov. Asymptotic behavior of the solution of the equation $\mu^2 \Delta u - k^2(x, y)u = f(x, y)$ in a rectangular domain, *Differentsial'nye Uravneniya* 9, 1654–1660 (Russian. English transl. *Differential Equations* 9, 1275–1279, 1973).
- [9] L. Chesnel, X. Claeys, S.A. Nazarov. A curious instability phenomenon for a rounded corner in presence of a negative material, *Asymptotic Analysis*, 88, 43–74, 2014.
- [10] L. Chesnel, J. Heleine, S.A. Nazarov. Acoustic passive cloaking using thin outer resonators, *ZAMP*, 73:98, 2022.
- [11] L. Chesnel, S.A. Nazarov, V. Pagneux. Invisibility and perfect reflectivity in waveguides with finite length branches, *SIAM J. Appl. Math.*, 78:4, 2176–2199, 2018.
- [12] L. Chesnel, V. Pagneux. Simple examples of perfectly invisible and trapped modes in waveguides, *Quart. J. Mech. Appl. Math.*, 71:3, 297–315, 2018.
- [13] Y.D. Chong, L. Ge, H. Cao, A.D. Stone. Coherent perfect absorbers: time-reversed lasers, *Phys. Rev. Lett.* 105:5, 053901, 2010.
- [14] D. Colton, R. Kress. *Inverse acoustic and electromagnetic scattering theory*, 3rd ed. Vol. 93. Springer-Verlag, Berlin, pages xiv + 405, 2013.
- [15] M. Costabel, M. Dauge. A singularly perturbed mixed boundary value problem. *Comm. Partial Differential Equations*, 21:11-12, 1919–1949, 1996.
- [16] M. Duruflé, H. Haddar, P. Joly. Higher order generalized impedance boundary conditions in electromagnetic scattering problems, *C. R. Phys.*, 7:5, 533–542, 2006.
- [17] C. Goldstein. A finite element method for solving Helmholtz type equations in waveguides and other unbounded domains, *Math. Comput.*, 39:160, 309–324, 1982.
- [18] P. Grisvard. *Elliptic problems in nonsmooth domains*. Pitman, Boston, 1985.
- [19] H. Haddar, P. Joly, H.-M. Nguyen. Generalized impedance boundary conditions for scattering by strongly absorbing obstacles: the scalar case, *Math. Mod. Meth. Appl. S.*, 15:8, 1273–1300, 2005.
- [20] H. Haddar, P. Joly, H.-M. Nguyen. Generalized impedance boundary conditions for scattering problems from strongly absorbing obstacles: the case of Maxwell's equations, *Math. Mod. Meth. Appl. S.*, 10: 18, 1787–1827, 2008.
- [21] H. Haddar, A. Lechleiter. Asymptotic models for scattering from unbounded media with high conductivity, *Math. Model. Numer. Anal.*, 44:6, 1295–1317, 2010.
- [22] I. Harari, I. Patlashenko, D. Givoli. Dirichlet-to-Neumann maps for unbounded wave guides. *Journal of Computational Physics*, 143:1, 200–223, 1998.
- [23] F. Hecht. New development in FreeFem++. *J. Numer. Math.*, 20: 3-4, 251–265, 2012, <http://www3.freefem.org/>.
- [24] N. Jiménez, V. Romero-García, V. Pagneux, J.-P. Groby. Rainbow-trapping absorbers: Broadband, perfect and asymmetric sound absorption by subwavelength panels for transmission problems, *Scientific reports*, 7:1, 1–12, 2017.
- [25] V.A. Kondratiev. Boundary problems for elliptic equations in domains with conical or angular points. *Trudy Moskov. Mat. Obshch.* 16, 209–292, 1967 (English transl. *Trans. Moscow Math. Soc.* 16, 227–313, 1967).
- [26] V.A. Kondratiev. The smoothness of solution of Dirichlet's problem for second-order elliptic equations in a region with a piecewise-smooth boundary. *Differentsial'nye Uravneniya* 6, 1831–1843, 1970 (English transl. *Differential Equations* 6, 1392–1401, 1970)

- [27] S. Longhi. \mathcal{PT} -symmetric laser absorber, *Phys. Rev. A*, 82:3, 031801, 2010.
- [28] V.G. Maz'ya, S.A. Nazarov, B.A. Plamenevskii. On the asymptotic behavior of solutions of elliptic boundary value problems with irregular perturbations of the domain, *Probl. Mat. Anal.*, 8, Leningrad: Leningrad Univ., 72–153, 1981. (Russian)
- [29] V.G. Maz'ya, S.A. Nazarov, B.A. Plamenevsky. Asymptotic theory of elliptic boundary value problems in singularly perturbed domains, Vol. 1, 2. Basel: Birkhäuser Verlag, 435, 2000.
- [30] V.G. Maz'ya, B.A. Plamenevsky. On boundary value problems for a second order elliptic equation in a domain with edges. *Vestnik Leningrad. Univ. Mat. Mekh. Astronom.* 1, 102–108, 1975 (English transl. *Vestnik Leningrad Univ. Math.* 8, 99–106, 1980).
- [31] V.G. Maz'ya, B.A. Plamenevsky. Elliptic boundary value problems on manifolds with singularities. *Problemy Mat. Anal.*, vyp. 6, Izdat. Leningrad. Univ., Leningrad, 85–142, 1977.
- [32] A. Merkel, G. Theocharis, O. Richoux, V. Romero-García, V. Pagneux. Control of acoustic absorption in one-dimensional scattering by resonant scatterers, *Appl. Phys. Lett.*, 107:24, 244102, 2015.
- [33] S.A. Nazarov. Vishik-Lyusternik method for elliptic boundary-value problems in regions with conical points. 1. The problem in a cone, *Sibirsk. Mat. Zh.*, 22:4, 142–163, 1981 (English transl.: *Siberian Math. J.*, 22, 594–611, 1982).
- [34] S.A. Nazarov. Vishik-Lyusternik method for elliptic boundary-value problems in regions with conical points. 2. The problem in a bounded region, *Sibirsk. Mat. Zh.*, 22:5, 132–152, 1981. (English transl.: *Siberian Math. J.*, 22, 753–769, 1982).
- [35] S.A. Nazarov. Asymptotics of the solution of the Dirichlet problem for an equation with rapidly oscillating coefficients in a rectangle, *Mat. sbornik.*, 182:5, 692–722, 1991. (English transl.: *Math. USSR Sbornik.*, 73:1, 79–110, 1992)
- [36] S.A. Nazarov. Asymptotic conditions at a point, self-adjoint extensions of operators and the method of matched asymptotic expansions, *Trudy St.-Petersburg Mat. Obshch.*, 5, 112–183, 1996. (English transl.: *Trans. Am. Math. Soc. Ser. 2*, 193, 77–126, 1999)
- [37] S.A. Nazarov. Asymptotic expansions of eigenvalues in the continuous spectrum of a regularly perturbed quantum waveguide, *Theoretical and mathematical physics*, 167:2, 239–262, 2011 (English transl.: *Theoretical and mathematical physics*, 167:2, 606–627, 2011).
- [38] S.A. Nazarov. Enforced stability of a simple eigenvalue in the continuous spectrum. *Funkt. Anal. i Prilozhen*, 47:3, 37–53, 2013 (English transl.: *Funct. Anal. Appl.*, 47:3, 195–209, 2013).
- [39] S.A. Nazarov, B.A. Plamenevsky. Elliptic problems in domains with piecewise smooth boundaries. Berlin, New York: Walter de Gruyter. 1994.
- [40] V. Romero-García, G. Theocharis, O. Richoux, A. Merkel, V. Tournat, V. Pagneux. Perfect and broadband acoustic absorption by critically coupled sub-wavelength resonators, *Scientific reports*, 6:1, 1–8, 2016.
- [41] M.I. Vishik, L. A. Lyusternik. “Regular degeneration and boundary layer for linear differential equations with small parameter”, *Uspekhi Mat. Nauk*, 12:5(77), 3–122, 1957. (English transl. *Russ. Math. Surv. Transl.*, 2, 239–269, 1962.)
- [42] W. Wan, Y. Chong, L. Ge, H. Noh, A.S. Stone, H. Cao. Time-reversed lasing and interferometric control of absorption, *Science*, 331:6019, 889–892, 2011.
- [43] M. Yang, S. Chen, C. Fu, P. Sheng. Optimal sound-absorbing structures, *Mater. Horiz.*, 4:4, 673–680, 2017.