



HAL
open science

Borehole fibre-optic seismology inside the Northeast Greenland Ice Stream

Andreas Fichtner, Coen Hofstede, Lars Gebraad, Andrea Zunino, Dimitri Zigone, Olaf Eisen

► **To cite this version:**

Andreas Fichtner, Coen Hofstede, Lars Gebraad, Andrea Zunino, Dimitri Zigone, et al.. Borehole fibre-optic seismology inside the Northeast Greenland Ice Stream. *Geophysical Journal International*, 2023, 235 (3), pp.2430-2441. 10.1093/gji/ggad344 . hal-04357096

HAL Id: hal-04357096

<https://hal.science/hal-04357096>

Submitted on 20 Dec 2023

HAL is a multi-disciplinary open access archive for the deposit and dissemination of scientific research documents, whether they are published or not. The documents may come from teaching and research institutions in France or abroad, or from public or private research centers.

L'archive ouverte pluridisciplinaire **HAL**, est destinée au dépôt et à la diffusion de documents scientifiques de niveau recherche, publiés ou non, émanant des établissements d'enseignement et de recherche français ou étrangers, des laboratoires publics ou privés.

Borehole fibre-optic seismology inside the Northeast Greenland Ice Stream

Andreas Fichtner¹,^{ORCID} Coen Hofstede,² Lars Gebraad,¹ Andrea Zunino¹,^{ORCID}
Dimitri Zigone³^{ORCID} and Olaf Eisen^{2,3,4}

¹Department of Earth Sciences, ETH Zurich, Switzerland. E-mail: andreas.fichtner@erdw.ethz.ch

²Alfred Wegener Institute, Helmholtz Centre for Polar and Marine Research, Bremerhaven, Germany

³Institut Terre et Environnement de Strasbourg, Université de Strasbourg/CNRS, Strasbourg, France

⁴Department of Geosciences, University of Bremen, Bremen, Germany

Accepted 2023 September 2. Received 2023 August 30; in original form 2023 July 12

SUMMARY

Ice streams are major contributors to ice sheet mass loss and sea level rise. Effects of their dynamic behaviour are imprinted into seismic properties, such as wave speeds and anisotropy. Here, we present results from a distributed acoustic sensing (DAS) experiment in a deep ice-core borehole in the onset region of the Northeast Greenland Ice Stream, with focus on phenomenological and methodological aspects. A series of active seismic surface sources produced clear recordings of the *P* and *S* wavefield, including internal reflections, along a 1500 m long fibre-optic cable that was placed into the borehole. The combination of nonlinear traveltime tomography with a firn model constrained by multimode surface wave data, allows us to invert for *P* and *S* wave speeds with depth-dependent uncertainties on the order of only 10 ms⁻¹, and vertical resolution of 20–70 m. The wave speed model in conjunction with the regularly spaced DAS data enable a straightforward separation of internal upward reflections followed by a reverse-time migration that provides a detailed reflectivity image of the ice. While the differences between *P* and *S* wave speeds hint at anisotropy related to crystal orientation fabric, the reflectivity image seems to carry a pronounced climatic imprint caused by rapid variations in grain size. Further improvements in resolution do not seem to be limited by the DAS channel spacing. Instead, the maximum frequency of body waves below ~200 Hz, low signal-to-noise ratio caused by poor coupling, and systematic errors produced by the ray approximation, appear to be the leading-order issues. Among these, only the latter has a simple existing solution in the form of full-waveform inversion. Improving signal bandwidth and quality, however, will likely require a significantly larger effort in terms of both sensing equipment and logistics.

Key words: Glaciology; Arctic region; Tomography; Seismic anisotropy.

1 INTRODUCTION

Ice streams are gravitationally driven motion within ice sheets and a major contributor to their total mass balance. Greenlandic ice stream discharge amounts to roughly 500 Gt a⁻¹, thereby turning the Greenland Ice Sheet into currently the largest single contributor to sea level rise (King *et al.* 2020). Discovered rather recently by SAR imagery (Fahnestock *et al.* 1993), the Northeast Greenland Ice Stream (NEGIS) accounts for ~12 per cent of these 500 Gt a⁻¹, making it the largest active ice stream in Greenland (e.g. Rignot & Mouginot 2012; Khan *et al.* 2014).

The unambiguously observable acceleration of ice discharge from Greenland's marine-terminating outlet glaciers (e.g. Mouginot *et al.* 2019; Mankoff *et al.* 2019; King *et al.* 2020; Khan *et al.*

2022) attaches considerable relevance to numerical ice sheet models that aim to predict the effect of climate warming and the resulting consequences for sea level rise and human society (Church *et al.* 2013). The accuracy of these models is limited by our knowledge about the boundary conditions and the rheology of ice streams. A particularly important contributor to rheology is crystal orientation fabric (COF). On the one hand, COF is part of an internal feedback loop: it controls the macroscopic anisotropy of ice and the resulting flow pattern, which, in turn, modifies the COF (e.g. Alley 1992; Pettit *et al.* 2007; Martín *et al.* 2009). On the other hand, COF is affected by external factors, such as changes in dust load associated with a climatic transitions, volcanic ash deposition or basal microparticles (e.g. Diprinzio *et al.* 2005; Samyn *et al.* 2005; Durand *et al.* 2007).

COF and other rheologic properties may be measured directly in ice cores (e.g. Bennett 1968; Faria *et al.* 2013, 2014). However, deep ice core drilling is logistically demanding, usually of long duration and expensive. Furthermore, the *in situ* azimuthal orientation of the ice crystals in the horizontal plane is generally lost during the retrieval of the core. Indirect geophysical methods, for example, seismic and radar, constitute a potentially attractive alternative to direct measurements because COF may lead to both anisotropic wave propagation (e.g. Picotti *et al.* 2015; Gerber *et al.* 2023) and reflections from regions where the fabric changes rapidly compared to the wavelength (e.g. Diez & Eisen 2015; Diez *et al.* 2015). However, as radar observations mostly operate at small offsets between source and receiver, they can usually only provide information about the horizontal anisotropy, not the full fabric. Only passive or active seismic methods may provide the full COF. Examples may be found in Bentley (1972), Blankenship & Bentley (1987) and Horgan *et al.* (2011), who successfully estimated depth-dependent ice fabric based on surface seismic reflection data.

The emergence of fibre-optic sensing technologies, and of distributed acoustic sensing (DAS) in particular, opens new opportunities for the study of icy materials with elastic waves. In addition to dense spatial sampling at metre scale, DAS offers a large bandwidth, ranging from mHz to kHz under favourable coupling conditions (Lindsey *et al.* 2020; Paitz *et al.* 2021; Bernauer *et al.* 2021). The ease of trenching a fibre-optic cable in snow or ice makes DAS especially attractive for seismic studies on glaciers and ice sheets (e.g. Walter *et al.* 2020; Klaasen *et al.* 2021; Hudson *et al.* 2021; Klaasen *et al.* 2022; Fichtner *et al.* 2022, 2023; Zhou *et al.* 2023).

To infer ice stream properties with high vertical resolution, DAS measurements in deep boreholes would be desirable. Without the need to recover an ice core, they could provide nearly space-continuous access to physical properties at depth, and probe a larger and potentially more representative volume. In seismic reservoir monitoring and exploration, pioneering DAS applications in boreholes date back around one decade (e.g. Mateeva *et al.* 2013; Daley *et al.* 2013, 2014; Mateeva *et al.* 2014). In contrast, similar experiments on ice sheets are more recent (Booth *et al.* 2020; Brisbane *et al.* 2021).

Here, we present results from a DAS deployment in a deep ice-core borehole in an active ice stream. As part of the East Greenland Ice-Core Project (EastGRIP), the site is located in the onset region of the NEGIS, where surface flow velocities are around 50 m a^{-1} (Fig. 1). Reaching to 1500 m depth, the DAS recordings contain clearly distinguishable direct and reflected *P* and *S* waves originating from explosive sources at the surface. They provide a comprehensive picture of wave speed variations and seismic reflectivity within the ice stream.

The focus of this work is on phenomenological and methodological aspects that may guide future fibre-optic seismology projects in deep ice-core boreholes. These aspects include (i) the nature of the seismic wavefield excited by active sources, (ii) the depth- and frequency-dependent characteristics of noise, (iii) the nonlinear inversion for *P*- and *S*-wave speed profiles, (iv) reflectivity imaging and (v) the achievable resolution in relation to the major aleatoric and epistemic uncertainties. A detailed glaciological interpretation of the inversion results will later be based on these analyses, and will involve the integration of independent data, for example, from ice-core crystallography and radar soundings.

2 EXPERIMENTAL SETUP

On 2022 August 9, we lowered a Solifos BRUfield fibre-optic cable by hand into the EastGRIP borehole. The light-weight, loose-tube cable with a diameter of 38 mm contained four single-mode optical fibres and had a density of $\sim 1150 \text{ kg m}^{-3}$. Its short- and long-term tensile strengths were 1200 and 650 N, respectively.

At the time of the experiment, the borehole had reached a depth of $\sim 2420 \text{ m}$ by electromechanical ice-core deep drilling; around 240 m above the ice-bed interface, estimated from radio-echo sounding (Vallelonga *et al.* 2014). In deeper boreholes, drilling fluid is required to avoid borehole closure from overburden pressure. To avoid leakage of the fluid into the pore space of the firn column, a borehole casing is commonly used, reaching from the top of the borehole to below the firn-ice transition. The EastGRIP borehole is filled with a mix of two thirds ESTISOL 240 and one third COASOL (Sheldon *et al.* 2014) to $\sim 70 \text{ m}$ below the surface, approximately the depth where the borehole casing ends. At an average temperature of around -20°C , the drill fluid has a density of $\sim 940 \text{ kg m}^{-3}$ and a kinematic viscosity of $\sim 27 \text{ mm}^2 \text{ s}^{-1}$, that is, 27 times that of water at room temperature.

Owing to the high viscosity of the drill fluid, the cable would not sink by its own weight at an acceptable, or even notable, speed. An additional mass of 2 kg, attached to the cable end, was required in order to achieve a sinking speed of $\sim 0.2 \text{ m s}^{-1}$. To ensure that the tensile strength of the cable would not be exceeded, we tested every few hundred metres if the cable could still be pulled up by hand. In the absence of experience with similar experiments and trying to be conservative, we decided to stop at 1500 m depth, where we estimated the force required to retrieve the cable at $\sim 250 \text{ N}$.

Thanks to the slight inclination of the borehole of $\sim 3^\circ$ on average, the cable was likely resting on the borehole wall instead of hanging freely within the drill fluid. Consequently, the cable was mechanically coupled to the ice of the borehole wall, thereby making a significant contribution to the data quality. This effect may have been particularly important for *S* waves, which, in contrast to *P* waves, require frictional coupling to the solid. We will discuss coupling in more detail in Section 3.

To one of the fibres, we connected a Silixa iDAS interrogator with a gauge length of 10 m. We set the channel spacing and the sampling frequency to 2 m and 1 kHz, respectively. Recording during the experiment was continuous in order to avoid the technical complication of remote triggering. As illustrated in Fig. 2, we fired surface shots consisting of 200 g PETN in the form of a 20 m detonation cord, doubled to 10 m length and placed parallel with the shot line every ~ 200 to $\sim 250 \text{ m}$ along a straight line with an azimuth of -16.7° from true north (i.e. NNW), starting at the borehole.

3 PHENOMENOLOGY

As illustrated in Fig. 3, the most prominent signal in the DAS strain rate recordings is anthropogenic noise from the Diesel generator in the EastGRIP camp. Despite being concentrated around a frequency of $\sim 30 \text{ Hz}$, its large amplitude of up to 20 000 nanostrain s^{-1} completely overwhelms the explosion-generated near-surface signals, with amplitudes that are typically around two orders of magnitude smaller. Thin vertical stripes in Fig. 3, consisting of only few time samples, are most likely high-frequency optical noise that affects

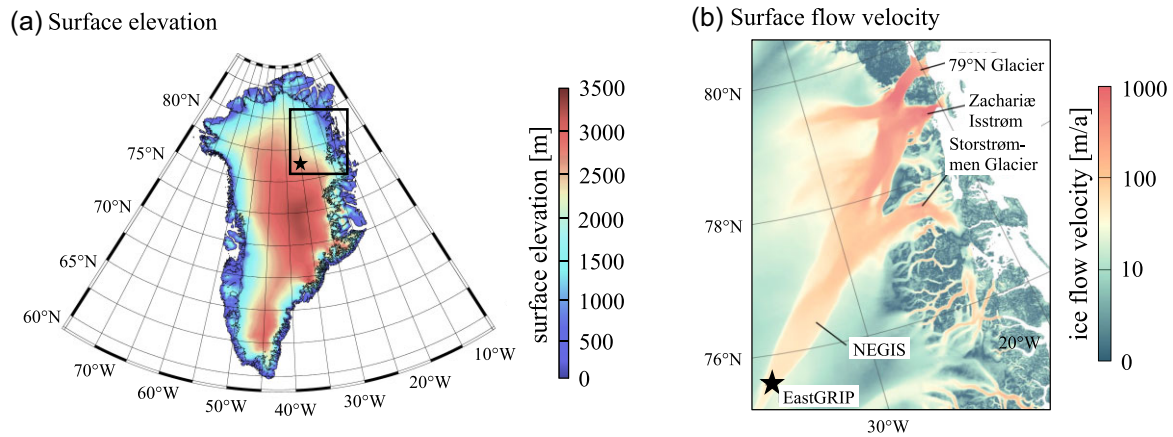


Figure 1. Geographic setting. (a) Surface elevation of the Greenland Ice Sheet, derived from CryoSat-2 data. The location of the EastGRIP drill site is marked by the black star. The area shown in panel (b) is outlined by the black rectangle. Figure modified from Helm *et al.* (2014). (b) Surface flow velocity of NEGIS (Joughin *et al.* 2018) with its outlet glaciers.

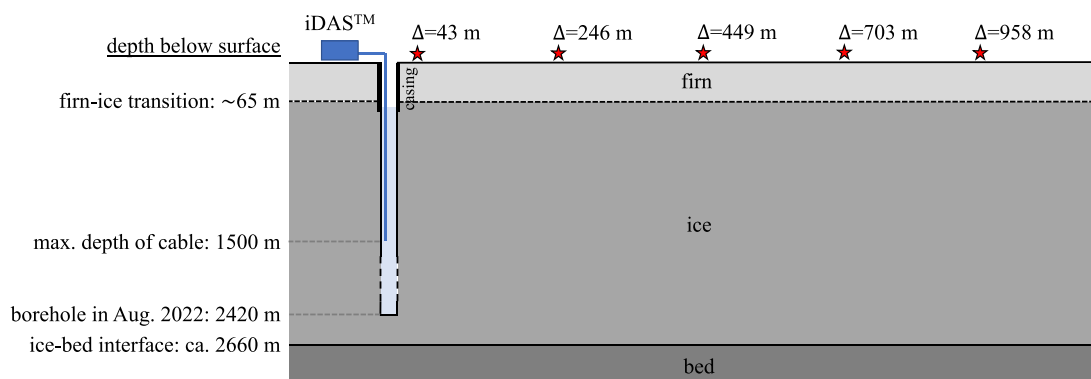


Figure 2. Schematic, not-to-scale, illustration of the experimental setup. The DAS cable, shown as blue line, reaches a maximum depth of 1500 m inside the 2620 m deep borehole. Shots, marked by red stars, were fired at distances Δ from the borehole every ~ 200 to ~ 250 m along a straight line. Drill core and seismological data independently locate the firn-ice transition around 65 m depth (Vallelonga *et al.* 2014; Fichtner *et al.* 2023). The ice-bed interface is approximately 2660 m below the surface (Vallelonga *et al.* 2014).

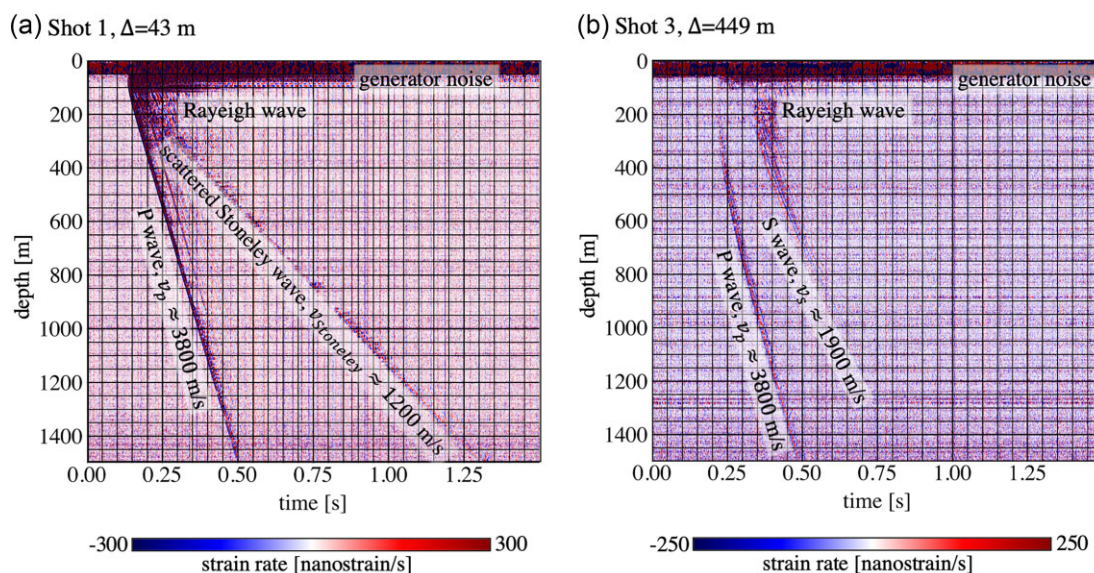


Figure 3. Raw strain rate recordings for shot 1 at a distance of $\Delta = 43$ m from (a) the borehole and (b) shot 3 at $\Delta = 449$ m. Major constituents of the wavefield, labelled in the figure, include near-surface generator noise, Rayleigh waves, P and S waves, as well as scattered Stoneley waves for shot 1, fired close to the borehole.

all channels simultaneously.

Below ~ 50 m depth, the amplitude of the generator noise diminishes quickly, revealing a dispersed Rayleigh wave train related to the active shot, which dominates the wavefield to around 100–200 m depth. For shot 1, fired at a distance of $\Delta = 43$ m from the borehole, direct P waves with a velocity of $v_p \approx 3800$ m s $^{-1}$ are clearly visible down to the end of the cable at 1500 m depth, as shown in Fig. 3(a). Mostly due to the downward-directed radiation pattern of a predominantly vertical single force (Kennett 2001; Aki & Richards 2002), direct P -wave amplitudes decay quickly for the other shots with increasing distance from the borehole. This effect is further amplified by the directional sensitivity of the distributed acoustic sensor. Beyond shot 5 at $\Delta = 958$ m, P waves cannot be detected with confidence.

Also as a consequence of the radiation pattern of an explosive source, S waves with a velocity of $v_s \approx 1900$ m s $^{-1}$ can be recorded only at larger offsets. They start to be clearly visible in shot 3 at $\Delta = 449$ m, shown in Fig. 3(b). Beyond shot 5 at $\Delta = 958$ m, visco-elastic attenuation and geometric spreading reduce the S -wave amplitudes below the noise level, which is around 50 nanostrain s $^{-1}$ for frequencies between ~ 50 –200 Hz, where body waves are most prominent.

The detailed amplitude spectra of the P waves from shot 1 are displayed in Fig. 4(a) as a function of depth. Beyond 300 Hz, the P -wave amplitude is comparable to the background noise, shown in Fig. 4(c). By virtue of the Nyquist theorem, this frequency-band limitation justifies the application of a low-pass filter with 300 Hz cut-off and the application of a sinc interpolation that converts the discretely sampled data into an effectively continuous signal that can be represented numerically with arbitrarily small temporal sampling. As explained in Section 4, the latter is important for the estimation of body-wave traveltimes shifts with an accuracy that is higher than the original sampling rate of 1 kHz.

Fig. 4(b) shows S -wave spectra from shot 3. As expected from the time–space domain representation in Fig. 3(b), S waves rise less prominently above the noise level than P waves. Lower amplitudes limit the exploitable frequency range to < 150 Hz. The spectral characteristics of the noise, recorded prior to the P -wave arrival and displayed in Fig. 4(c), are nearly independent of both depth and frequency beyond ~ 150 Hz. This suggests that the major noise source is the instrument itself. It follows that the instrumental and not the ambient/anthropogenic noise floor controls the detectability of the active-source signals.

Fig. 5 illustrates the depth dependence of the unfiltered direct P -wave amplitude, estimated as an integral of the signal power over the duration of the P wavelet, $A(z) = [\int \epsilon^2(z, t) dt]^{1/2}$, where $\epsilon(z, t)$ is the strain rate of the P wavelet at depth z for shot 1, fired next to the borehole. From 200 m downwards, where the wavefield is dominated by body waves, the amplitude closely follows the theoretical geometric spreading of $1/\text{distance}$ in a homogeneous medium. This is expected well below the firn-ice transition at ~ 65 m depth (Vallelonga *et al.* 2014; Fichtner *et al.* 2023), where the nearly linear shape of the P wave front suggests only minor variations in P wave speed. Most importantly, the P -wave amplitude decay proportional to $1/\text{distance}$ indicates that coupling of the cable to the surrounding ice did not vary strongly with depth. It indicates, furthermore, that visco-elastic attenuation of P waves is not obviously observable within the distance ranges considered here.

In Fig. 6, easily distinguishable upward reflections are visible around 620 and 850 m depth. The reflections at 620 and 1050 m define the boundaries of a depth interval where the number of internal reflections is low, compared to the depth intervals below and above.

This suggests strong vertical variations in reflectivity. Internal reflections are likely the reason why the direct P -wave amplitude decay in Fig. 5 is slightly faster than $1/\text{distance}$ below ~ 600 m depth. While the easily recognizable reflections enable straightforward reflectivity imaging, they also preclude estimations of the visco-elastic quality factor Q by amplitude ratio methods, because the observed energy loss is not plausibly dominated by visco-elastic attenuation.

In addition to the P wave, the recording of shot 1 also contains a wave front propagating at a plausible Stoneley wave speed of ~ 1200 m s $^{-1}$. The presence of an actual Stoneley wave would be surprising because the vertically oriented DAS cable has close to zero sensitivity to horizontally polarized wave motion. Furthermore, the shape of this wave front is not coherent with depth, and its amplitude varies strongly. In fact, the largest amplitudes occur at depths where strong P -wave reflections can be observed. This correlation suggests that we rather observe scattered waves excited by the interaction of the Stoneley wave with reflectivity changes in the ice, instead of the Stoneley wave itself.

4 TRAVELTIME DATA AND INVERSION

4.1 P - and S -wave traveltimes observations

The coherence of P and S waveforms as a function of depth permits the estimation of traveltimes using a matched-filter or template-matching approach (Turin 1960). As templates $w(t)$ we use stacks of time-shifted P and S waveforms, with the optimal time-shift determined by the maximum of the correlation between neighbouring traces. This template-matching procedure defines the traveltimes of a band-limited (finite-frequency) wave.

To reduce the influence of noise, we limit both the template and the traveltimes estimations to traces with a signal-to-noise ratio (SNR) above 3. Furthermore, we only include traveltimes when the correlation coefficient of the respective trace with the template $w(t)$ is above 0.7. This conservative restriction ensures that the template was actually detected in the noise-contaminated recording with high confidence. Since tight time constraints in the field did not allow us to properly time the shots, absolute traveltimes are only known up to an additive constant.

Fig. 7 summarizes the 1896 P and 333 S wave measurements in the form of reduced traveltimes $t_0 - \sqrt{h^2 + \Delta^2}/v_{p,s}^0$, where h is depth, $v_p^0 = 3800$ m s $^{-1}$ and $v_s^0 = 1900$ m s $^{-1}$. The actual origin time t_0 is unknown and set to a value that is convenient for visualization. In addition to smaller details with length scales below 100 m, the reduced P -wave traveltimes in Fig. 7 show a broad pattern of early arrivals centred around 800 m, suggesting higher than average P wave speed above that depth. Reduced S -wave traveltimes, in contrast, show a different behaviour, with a minimum roughly between 600–700 m followed by a faster increase, especially for shot 5. Hence, already a first visual inspection indicates that v_p and v_s behave differently as a function of depth.

Since wave speed variations in ice are expected to be small (in the percent range), measurement uncertainties must be considered with some care. Traveltimes uncertainties arising from the presence of quasi-random noise can be estimated by repeatedly measuring the cross-correlation time-shift between the template, $w(t)$, and a noise-contaminated version, $w(t) + n(t)$, that plays the role of an artificial data trace. For the noise, $n(t)$, we use 10 000 randomly selected snippets of actual data noise, recorded prior to the P -wave arrival.

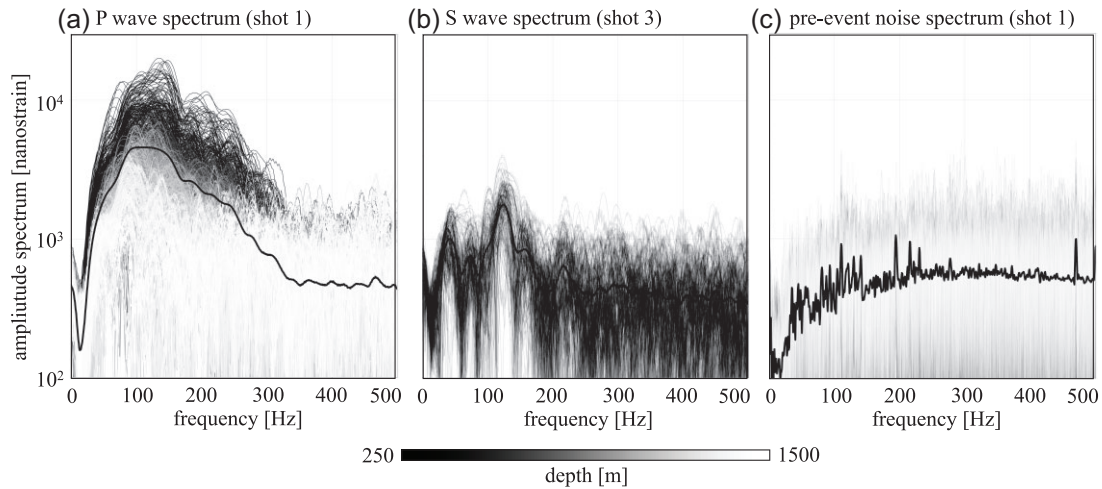


Figure 4. Amplitude spectra of (a) *P* waves, (b) *S* waves and (c) noise recorded prior to the *P*-wave arrival. The grey scale encodes the depth of an individual trace, starting at 250 m depth, where anthropogenic (generator) noise has largely decayed below a notable level. The thick black curve marks the average amplitude spectrum over all traces. For the *S* waves in panel 3, the maximum depth is 800 m, below which the *S* wave cannot be detected with reasonable confidence.

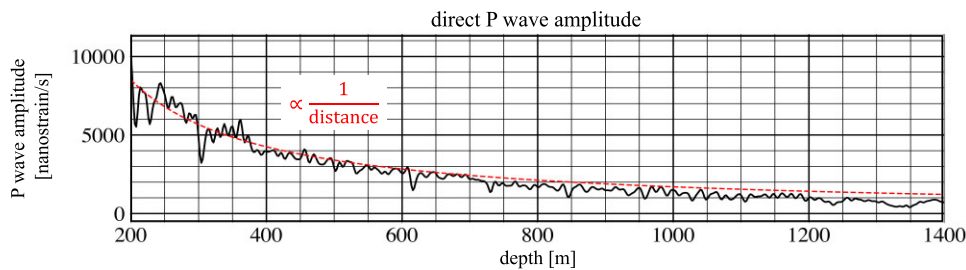


Figure 5. The depth-dependent amplitude of the direct *P* wave from shot 1 closely follows the theoretical geometric spreading of $1/\text{distance}$ in a homogeneous medium, which is plotted in red for comparison.

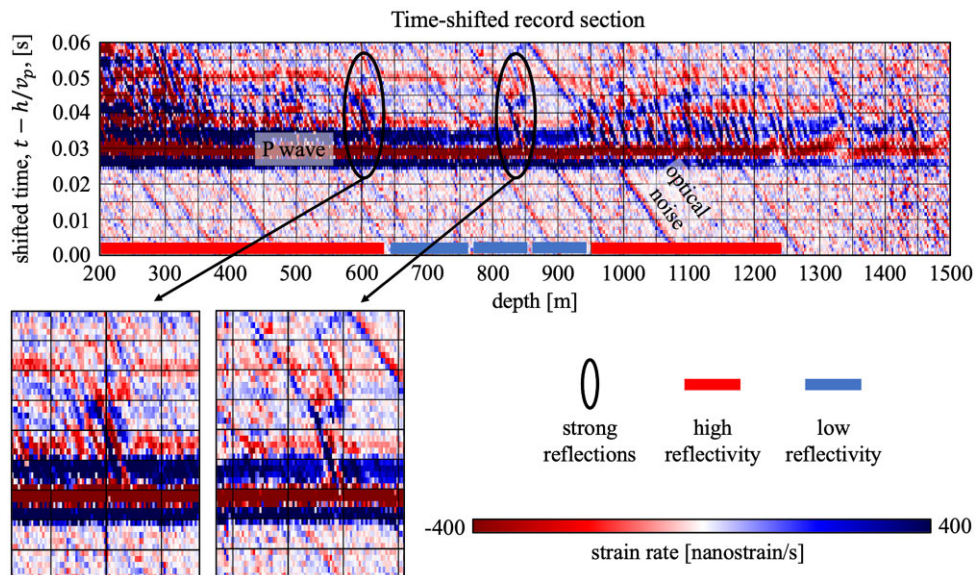


Figure 6. Time-shifted section of shot 1 fired close to the borehole at $\Delta = 43$ m. Each trace is shifted by h/v_p , where h is depth and $v_p = 3800 \text{ m s}^{-1}$ is an approximate average *P* wave speed. The section is centred around the direct *P*-wave arrival. Depth intervals where strong reflected waves are visible are marked by horizontal bars. Blue bars mark depth intervals where strong reflections are essentially absent. Black ellipses with zoomed panels indicate easily visible individual reflections. Optical noise has an apparent propagation speed of exactly $v_p = 3800 \text{ m s}^{-1}$ and corresponds to the purely vertical striping in Fig. 3.

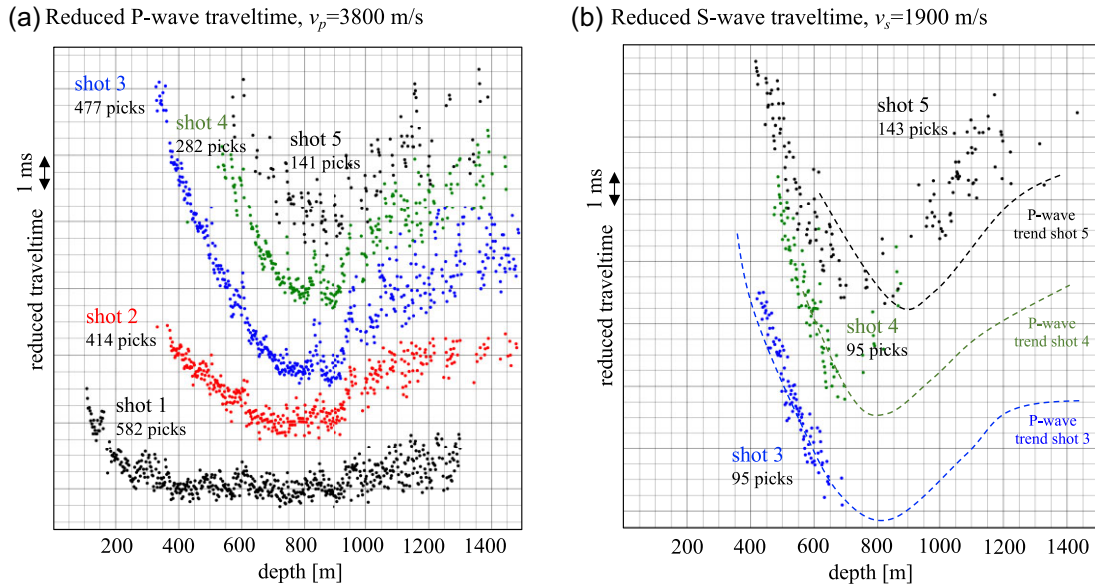


Figure 7. Traveltime measurements. (a) Reduced P -wave traveltime, $t_0 - \sqrt{h^2 + \Delta^2}/v_p^0$, with a P -wave reduction speed of $v_p^0 = 3800 \text{ m s}^{-1}$. The actual origin time t_0 for the different shots is unknown. Specific values for t_0 are selected here merely for the purpose of producing a useful summary plot. (b) Reduced S -wave traveltimes, similar to panel (a), with an S -wave reduction speed of $v_s^0 = 1900 \text{ m s}^{-1}$. For comparison, the P -wave traveltime trends from panel (a) are superimposed in the form of dashed lines for shots 3, 4 and 5.

A histogram of the resulting traveltimes for the P wavelet from shot 1 is shown in Fig. 8(a). The noise snippets were scaled to yield an average SNR of ~ 3.5 . As expected for noise from a multitude of sources, the distribution is unimodal and approximately Gaussian, thereby justifying the use of an L_2 misfit for traveltime inversion. The standard deviation of the errors, taken as the measurement uncertainty, is $\sigma_p = 0.21 \text{ ms}$. Fig. 8(b) shows the result of the uncertainty estimation for the S wavelet from shot 3, again with a scaled noise snippet that produces an SNR of ~ 3.5 . As can be seen in Fig. 3, the S wavelet has a significantly longer duration than the P wavelet. This leads to a more accurate traveltime measurement, with a standard deviation of $\sigma_s = 0.10 \text{ ms}$.

4.2 Nonlinear traveltime inversion

In order to avoid a mismatch between the traveltime measurement technique and the inversion method, the finite-frequency definition of traveltimes from Section 4.1 must in principle be matched by full-waveform modelling and an inversion procedure that employs the corresponding finite-frequency sensitivity kernels (e.g. Luo & Schuster 1991; Marquering *et al.* 1999; Dahlen *et al.* 2000). Because the computational cost would be prohibitive, we limit ourselves to forward modelling and inversion based on geometric ray theory. The consequence of this pragmatic simplification is a systematic error that is typically on the order of ~ 10 per cent of the measured traveltime differences for media with wave speed variations in the percent range (e.g. Baig & Dahlen 2004; Chaves *et al.* 2021). Conservatively honouring the hardly quantifiable modelling error, we continue with a traveltime uncertainty of 1 ms for both P and S waves.

Since the presence of noise combined with the radiation pattern effect do not permit reliable measurements of P - and S -wave traveltimes near the surface, the upper few hundred metres must be constrained independently prior to a traveltime inversion. For

this, we harness information from multimode Rayleigh and P -wave modes observed at EastGRIP during the landing of a cargo airplane (Fichtner *et al.* 2023). The firn model that explains the first three Rayleigh modes and the first two P -wave modes to within their observational errors is displayed in Fig. 9. Possibly due to enhanced compaction by human activity around the EastGRIP camp, the first metre is characterized by constant v_p and v_s . This is followed by an exponential behaviour, typical for firn layers (e.g. Brockamp & Pistor 1967; Kohnen & Bentley 1973), down to 100 m depth. Below 100 m, where the modal data gradually lose resolving power, v_p and v_s are initially set to 3720 and 1840 m s^{-1} , respectively.

Data from radar soundings on NEGIS, and around the EastGRIP camp in particular, constrain the topographic variations of layers within the ice stream to be on the order of only few metres over several kilometres distance (e.g. Franke *et al.* 2022; Mojtabavi *et al.* 2022). This justifies an inversion of the traveltime observations for a stratified, laterally homogeneous medium. To account for the dependence of ray paths on velocity structure, we employ the iterative, nonlinear L-BFGS algorithm (e.g. Nocedal 1980; Nocedal & Wright 1999; Fichtner 2021) for the minimization of the L_2 misfit between observed and calculated traveltimes. The resulting models for v_p and v_s as a function of depth are shown in Fig. 10, together with a preliminary chronology of the EastGRIP ice core (Mojtabavi *et al.* 2020).

For an approximate assessment of model uncertainties induced by the combination of observational and forward modelling errors in the P - and S -wave traveltimes, we repeat the nonlinear inversions with datasets to which we added random Gaussian errors with 1 ms standard deviation. This results in the ensemble of 30 alternative v_p and v_s models shown as blue curves in Fig. 10. The ensembles themselves already provide a visual impression of model uncertainties. A more quantitative uncertainty analysis in the form of wave speed standard deviations and interlayer correlations is displayed in Fig. 11 for v_p and Fig. 12 for v_s .

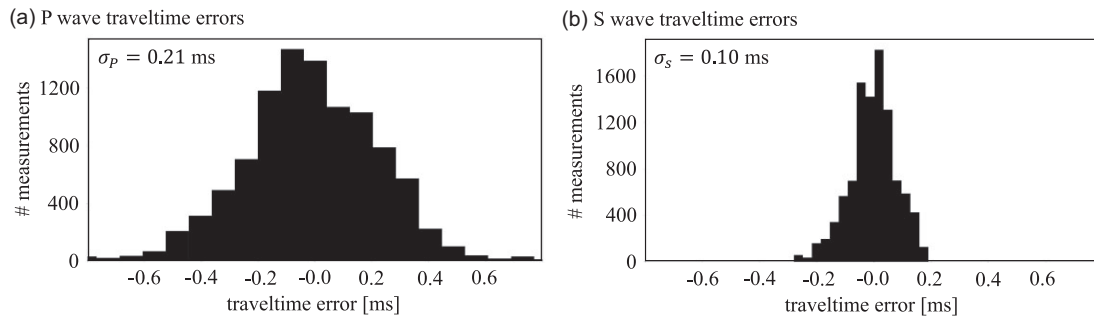


Figure 8. Statistical estimation of traveltime measurement uncertainties. (a) Histogram of 10 000 random realizations of P -wave traveltime estimates between the P -wave template from shot 1, $w(t)$, and its noise-contaminated version, $w(t) + n(t)$. The random noise snippet $n(t)$ is scaled to produce an average SNR of ~ 3.5 . The standard deviation of the errors, taken as the measurement uncertainty, is $\sigma_P = 0.21$ ms. (b) The same as in panel (a) but for the S -wave template from shot 3. The standard deviation is $\sigma_S = 0.10$ ms. Again, the noise snippets are scaled to produce an SNR of ~ 3.5 .

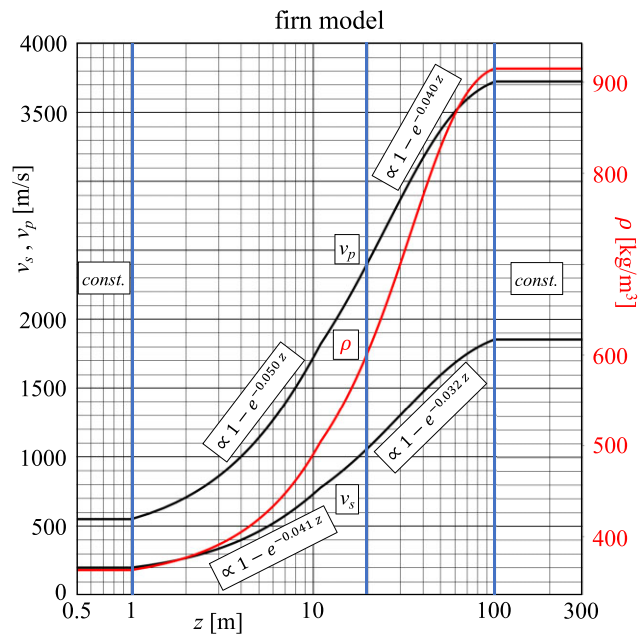


Figure 9. *A priori* P - and S -wave speed models (black) constrained by multimode Rayleigh and P -wave mode data collected during an airplane landing near the EastGRIP camp (Fichtner *et al.* 2023). Functional forms in the intervals 0–1, 1–11, 11–100 and >100 m are indicated for seismic wave speeds. Though not used in the traveltime inversion, the density profile (red) calculated from v_p (Kohnen 1972) is shown for a more complete characterization of the firn layer.

5 REVERSE-TIME MIGRATION AND REFLECTIVITY

Observations of upward reflected P waves, as shown in Fig. 6, complement the body-wave traveltimes by providing information on structural details that are smaller than the dominant wavelength of ~ 20 m. The spatial density of the DAS recordings facilitates the imaging of reflectivity in two ways. First, reflected waves can be separated from the incident wave by simple f - k filtering, in our case between velocities from -4000 to -3600 m s^{-1} , where the minus sign denotes upward propagation. Second, a 1-D reverse-time migration can be computed for each channel individually; and the results can be averaged in order to reduce the effect of noise in the reflectivity image.

Fig. 13 displays a scaled version of P -wave reflectivity obtained by this procedure. To compensate for the amplitude loss due to

geometric spreading, the value of the reflectivity image at some depth h is multiplied by h . The reflectivity distribution features two pronounced peaks at 620 and 850 m depth. As other, less prominent reflectivity peaks, they correspond to vertical discontinuities with a sharpness that is significantly smaller than the dominant P wavelength of ~ 20 m. Furthermore, the depth intervals from ~ 280 to ~ 370 m and from ~ 970 to ~ 1180 m are characterized by a rapid sequence of high-contrast layers.

6 DISCUSSION

The seismic wave speed models in Fig. 10 and the reflectivity image in Fig. 13 carry information on the internal structure and the dynamics of the NEGIS in the vicinity of the EastGRIP drill site. Examples include the variations of v_p and v_s in excess of 200 m s^{-1} . They suggest the presence of pronounced seismic anisotropy, which single ice crystal anisotropy suggests to be at approximately this level (e.g. Diez & Eisen 2015). Temperature variations that produce similar effects would have to reach ~ 200 K (Kohnen 1974), nearly 10 times of what is being observed in similarly deep boreholes on the Greenland Ice Sheet (Løkkegaard *et al.* 2022), but only close to the ice-bed interface. The more rapid changes of v_s compared to v_p hint at depth-dependent COF rotations predominantly in the horizontal plane that affect (quasi) S waves more strongly than mostly vertically propagating P waves (e.g. Diez & Eisen 2015). Complementing the dynamic information contained in seismic anisotropy, the reflectivity image seems to carry some climatic imprint. For instance, the high reflectivity interval between ~ 970 to ~ 1180 m corresponds to the Greenlandian, the first stage of the Holocene, where higher temperatures caused an increased atmospheric dust load (Fischer *et al.* 2007) and possibly palaeo-surface freeze-thaw that lead to larger and more variable grain sizes in the ice (e.g. Kerch 2016). A similarly clear correlation for other depth ranges is not obvious, indicating that a more quantitative interpretation of the fibre-optic sensing results requires a careful integration of complementary data, for example, from ice core crystallography, borehole logging and other surface-geophysical experiments, most notably radar sounding.

Our focus here is on methodological aspects that pertain to fibre-optic seismology for deep (>1000 m) boreholes on glaciers and ice sheets in general. This includes imaging resolution and its limits, the derivation of other glaciologically relevant material properties from uncertain v_p and v_s profiles, and suggestions for improved experimental and analysis procedures. We will discuss each of these aspects in the next subsection.

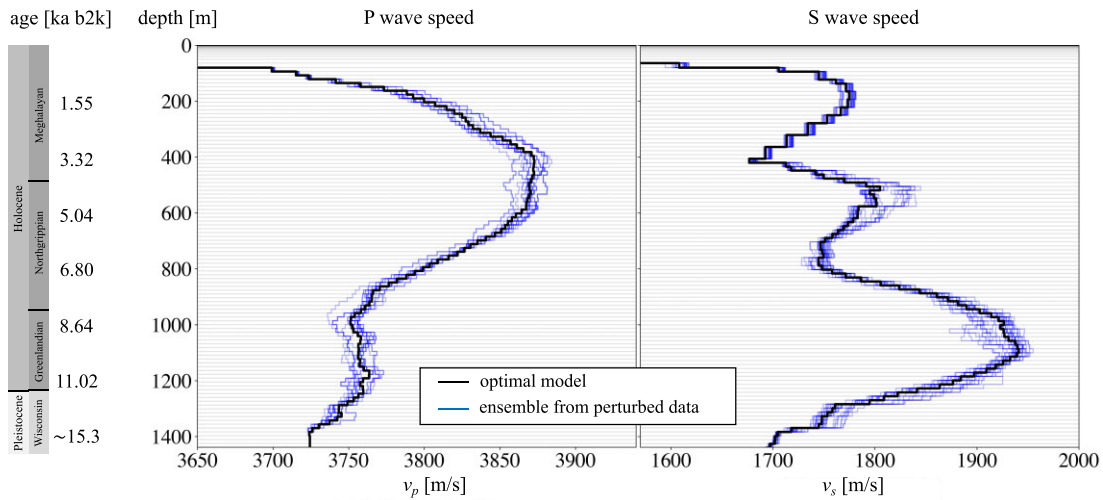


Figure 10. Models of v_p and v_s as a function of depth. The black curves mark the optimal models. Models shown in blue represent the ensemble obtained by inverting traveltimes contaminated by random Gaussian errors with 1 ms standard deviation. The variation within the model ensembles defines the formal model uncertainties shown in Figs 11 and 12. For reference, the preliminary chronology to the left, in ka before 2000 (b2k) is taken from Mojtavavi *et al.* (2020).

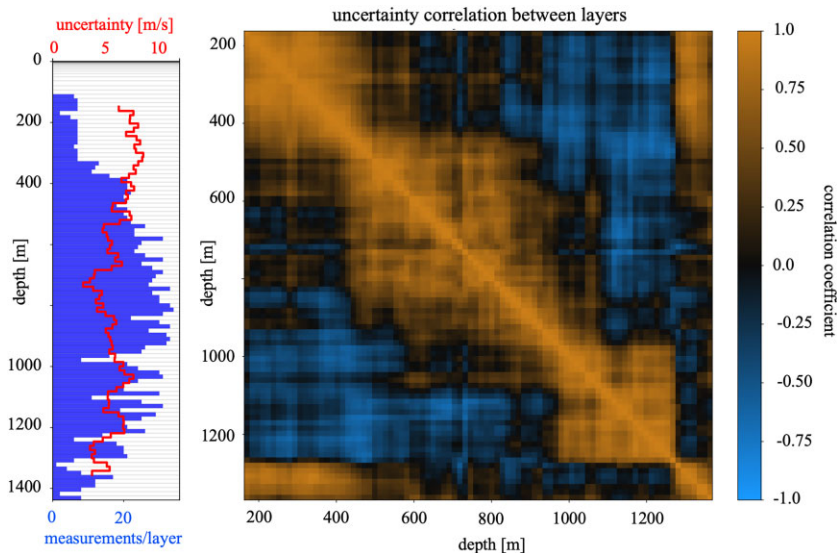


Figure 11. Uncertainty proxies for the v_p model. Model uncertainties correspond to the standard deviation of the v_p ensemble shown in Fig. 10. They are shown only in the depth range where the L-BFGS optimization produced significant deviations from the initial model, that is, where gradients are significantly non-zero. The number of measurements per layer, in blue, is shown for comparison. The correlation matrix in the right-hand panel is also derived from the v_p ensemble. It describes the mapping of observational errors into correlated model uncertainties, that is, the extent to which layers can be resolved individually.

6.1 Resolution and resolution limits

One of the fundamental questions prior to our experiment concerned the achievable resolution, *sensu lato*, of P - and S -wave speed variations, as well as its limiting factors. As shown in Fig. 11, the large number of P -wave traveltimes measurements (1896) constrains v_p between ~ 200 and ~ 1400 m with an uncertainty of around 5 m s^{-1} or 0.14 per cent, on average. This uncertainty is roughly 40 times smaller than the v_p variations within this depth interval. In contrast, the number of S -wave traveltimes measurements is only 333, resulting in significantly larger v_s uncertainties of $\sim 10 \text{ m s}^{-1}$ or 0.55 per cent over the much smaller interval from 500 to 1200 m.

These uncertainties are relative to the thickness of the layers in the velocity models, which we set to 15 m. This choice reflects

the achievable spatial resolution, for which the uncertainty correlations in Figs 11 and 12 serve as a useful proxy. The half-width of the interlayer correlations ranges between ~ 20 and ~ 70 m, depending on depth. Hence, a layer thickness of 15 m ensures that resolvable features can just be represented by the model parametrization.

Model uncertainties and correlation (resolution) lengths are primarily controlled by the combined measurement and modelling uncertainties. The estimated ~ 1 ms uncertainty of the traveltimes measurements translates into propagation distances of around 2 m for S waves and 4 m for P waves. Consequently, the selected 2 m channel spacing in our experiment is surely not among the limiting factors, unless measurement and modelling uncertainties can be reduced significantly.

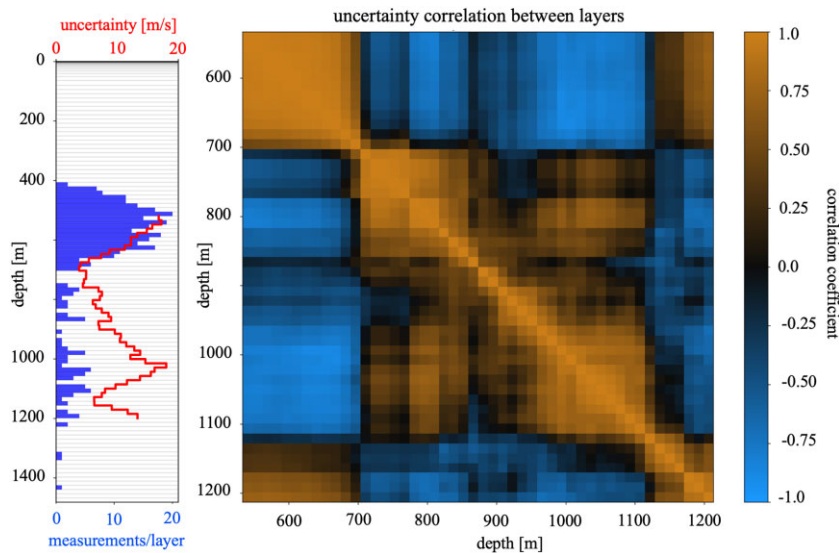


Figure 12. The same as in Fig. 11, but for v_s uncertainties.

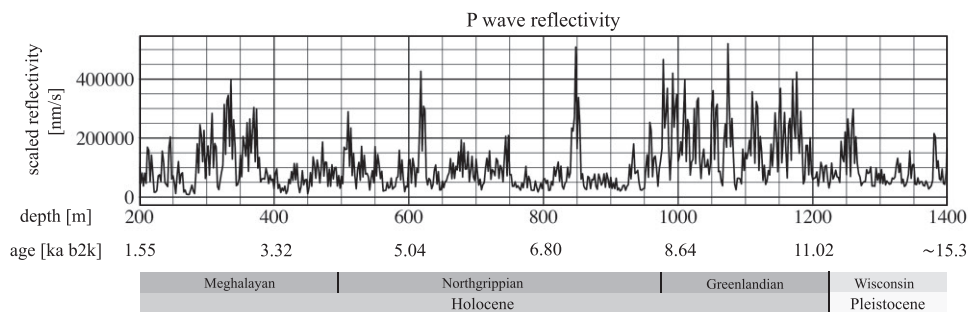


Figure 13. P -wave reflectivity as a function of depth, obtained by reverse-time migration of the P -wave reflections, summed over all channels between 200 and 1400 m depth. To compensate for geometric spreading, the results of the reverse-time migration at some depth h are multiplied by h . This results in the physical unit $\text{nanostain m s}^{-1} = \text{n m s}^{-1}$. The approximate age scale at the bottom is taken from Mojtabavi *et al.* (2020).

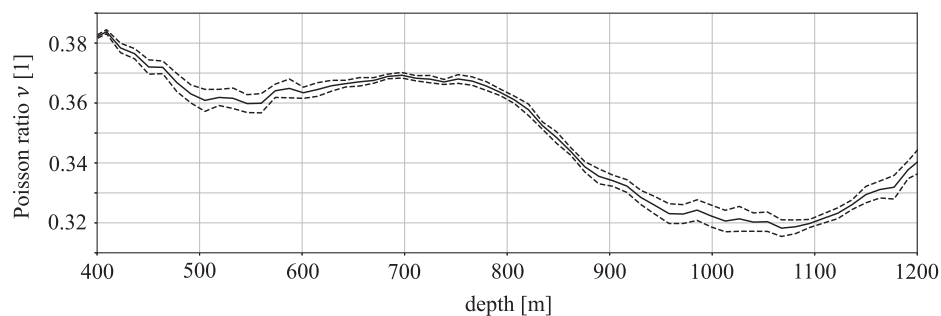


Figure 14. Effective Poisson ratio ν within the depth range where both v_p and v_s can be constrained with reasonable confidence. Standard deviations from the mean are shown as dashed curves.

A reduction of modelling uncertainties could be achieved through the replacement of ray theory by full-waveform modelling and inversion (e.g. Fichtner 2010; Virieux & Operto 2009; Liu & Gu 2012; Pearce *et al.* 2023), ideally taking anisotropy and visco-elastic attenuation into account. However, the minimum wavelength of around 10 m for both P and S waves implies propagation distances 200 wavelengths or more, which is still challenging with currently available computational resources.

Major contributors to measurement uncertainties are SNR and signal bandwidth. Nearly depth-independent spectra in Fig. 4(c)

suggest that the dominant noise is primarily of instrumental origin. The extent to which future technological developments may reduce instrumental noise without compromising the spatial resolution of DAS measurements is hard to predict at this point. Better coupling of the cable would almost certainly improve the SNR, but seems achievable without major efforts only by letting the cable freeze in after all other operations have ceased, which is not an option for deep glaciological boreholes.

Repeating the numerical experiment summarized in Fig. 8 with stretched and dilated wavelet templates, allows us to estimate the

effect of signal bandwidth on the measurement error statistics. (Dilating a wavelet by a factor n , increases its frequency content by the same factor.) Owing to the approximate frequency independence of the noise between 100 and 500 Hz, a frequency doubling of the wavelet reduces the measurement uncertainties roughly by a factor of 2. This could be achieved with smaller detonation charges at the expense of poorer signal detection or by lowering charges into the borehole, which risks to damage the cable. Non-explosive may be alternatives that remain to be tested.

While higher signal frequencies would also benefit the resolution of the reflectivity image, which is primarily wavelength-limited, it contradicts the need for stronger sources that increase the SNR and allow seismic energy to propagate above the noise level beyond 1500 m distance. Furthermore, depending on visco-elastic attenuation, higher frequencies may simply not propagate far enough.

6.2 Derived properties

The joint inversion for v_p and v_s enables the estimation of derived quantities, such as the effective Poisson ratio

$$\nu = \frac{v_p^2 - 2v_s^2}{2(v_p^2 - v_s^2)}. \quad (1)$$

Since v_p and v_s are not equally well constrained at all depths, ν and its standard deviation cannot be computed directly from eq. (1). Instead, we produce Gaussian distributed random samples of v_p and v_s , with means and standard deviations provided by the uncertainty estimates in Figs 11 and 12. This results in a collection of samples for ν , from which its mean and standard deviation can be computed. For the depth range where both v_p and v_s can be constrained with some confidence, ν is shown in Fig. 14.

While the procedure outlined above illustrates how uncertainties in v_p and v_s can be used and propagated accurately into derived inferences, it is important to note that the depth variations of the effective Poisson ratio ν carry the imprint of both anisotropy and the true Poisson ratio ν_0 , that is, the deformation ratio in orthogonal directions. Constraining ν_0 would require a complete model of anisotropy as a function of depth.

Similar to ν , other elastic parameters, such as the bulk or shear moduli may be constrained (e.g. Schlegel *et al.* 2019). This would, however, require information about density, which is not directly accessible with seismic traveltime data. Though density can be estimated from seismic wave speeds using scaling relations (Kohnen 1972; Diez *et al.* 2014), their uncertainties may be difficult to quantify.

6.3 Logistics and future experiments

In addition to any measures that reduce the data uncertainties listed in Section 6.1, future experiments may benefit from lowering the fibre-optic cable deeper into the borehole. Especially in the deeper part of the ice sheets, where strong shear is present, changes in fabric and crystal size change the rheological properties considerably and determine the overall dynamics of the ice. There is also a strong interest to record ice-bed events or other signals coming from fluid discharge that may help us to better understand the properties of the interface and the various processes that may affect the friction, which is key for modelling. Our main limitation was the tensile strength, which could be improved by choosing a more sturdy cable. The larger weight of such a cable would likely preclude any manual handling of the cable drums, and require not only a motorized

winch but more sophisticated transportation solutions inside the underground drilling trench, as well as increased transport weights for remote deployment.

The precise effect of a higher tensile strength on the sensitivity to seismic wave motion in the borehole is hard to estimate *a priori*. However, given that more tensile stress will be absorbed by the cable reinforcement, it is to be expected that sensitivity may decrease.

Irrespective of a particular cable type, sensitivity to deformation could be improved with better coupling. Fixing the cable behind a borehole casing is standard in seismic exploration but impractical in deep ice-core drilling, where a casing may only exist within the firn layer. One solution could be to let the cable freeze into the borehole after all other operations and *in situ* analyses have ceased. This would, however, require the non-trivial replacement of the drill fluid with water. For shallower depth, hot-water drill boreholes may be an alternative.

7 CONCLUSIONS

We presented initial results from a DAS experiment in a deep ice-core borehole inside an active ice stream. By far the most important conclusion at this stage is the logistic feasibility of such an experiment and the quality of the results. The application of nonlinear traveltime tomography and the use of a firn model constrained by multimode surface wave data, allow us to invert for v_p and v_s with depth-dependent uncertainties on the order of only 10 m s⁻¹, and vertical resolution of 20–70 m.

Although this resolution is on the same order of magnitude or even lower than that of standard crystallographic measurements along the ice core, the advantage of our approach is the *in situ* sensing of a larger volume. Especially for deeper depths closer to the ice-bed interface this is important, as single crystals often have 10 cm in diameter and thus span the whole ice core and might thus bias ice-core-based results. DAS-based results might thus yield results are more representative result for the bulk ice properties.

Thanks to the regularly spaced DAS data, upward reflections can be separated easily from the rest of the wavefield, and be used in a reverse-time migration that provides a detailed reflectivity image of the ice. Constraining visco-elastic attenuation with reasonable confidence does not seem to be possible, because scattering is likely to be the dominant contributor to energy loss in the direct body waves.

With current levels of data space uncertainties, a spatial resolution of v_p and v_s on the order of the DAS channel spacing in the metre range is clearly not achievable. Desirable improvements in this regard include (i) the simultaneous increase of the maximum frequency and the source strength, (ii) better coupling of the cable, (iii) a reduction of instrumental noise and (iv) the transition from ray-based to full-waveform modelling and inversion. While (i) contradicts itself to some extent, a similar effect may be reached by placing non-explosive, non-destructive sources inside the same or a nearby auxiliary borehole. Point (ii) may only be achievable by letting the cable freeze in, that is, by losing both the borehole and the cable. Realizing that technological progress in the direction of (iii) is difficult to plan and predict, this leaves (iv) as an option that is readily feasible.

It follows, in summary, that significant improvements beyond the methods presented here will likely require a significant jump in complexity and effort, with regards to both experimental and data analysis procedures. This, in turn, will require different project planning at all levels.

DATA STATEMENT

All DAS data used in this work and the ensemble of final models are available on the Earth Model website of the ETH Seismology and Wave Physics Group: www.swp.ethz.ch → Models. Field work impressions, including the DAS cable deployment, can be found on the YouTube Channel of the ETH Seismology & Wave Physics Group: <https://www.youtube.com/@seismologyandwavephysics-e6406>.

ACKNOWLEDGMENTS

AF and CH gratefully acknowledge support by the whole East-GRIP team, including the provision of all necessary infrastructure. This experiment would not have been possible without the immense technical support by Søren Børsting, Sverrir Hilmanson and Dorte-Dahl Jensen. Invaluable technical support, before and during the experiment, was provided by Silixa (Athena Chalari and support team) and Solifos (Andrea Fasciati). OE and DZ were supported by the CHIPS grant of the University of Strasbourg Institute for Advanced Studies. EastGRIP is directed and organized by the Centre for Ice and Climate at the Niels Bohr Institute, University of Copenhagen. It is supported by funding agencies and institutions in Denmark (A. P. Møller Foundation, University of Copenhagen), the United States (US National Science Foundation, Office of Polar Programs), Germany (Alfred Wegener Institute, Helmholtz Centre for Polar and Marine Research), Japan (National Institute of Polar Research and Arctic Challenge for Sustainability), Norway (University of Bergen and Trond Mohn Foundation), Switzerland (Swiss National Science Foundation), France (French Polar Institute Paul-Emile Victor, Institute for Geosciences and Environmental Research), Canada (University of Manitoba) and China (Chinese Academy of Sciences and Beijing Normal University). We thank Thomas Hudson and Adam Booth for their constructive reviews and help with improving the manuscript.

SUPPORTING INFORMATION

Supplementary data are available at *GJI* online.

raw data: <https://polybox.ethz.ch/index.php/s/oFv0MYz9KVrEeLO>

final model: <https://polybox.ethz.ch/index.php/s/YnlMDyVg7Fk9UwF>

Please note: Oxford University Press is not responsible for the content or functionality of any supporting materials supplied by the authors. Any queries (other than missing material) should be directed to the corresponding author for the paper.

REFERENCES

- Aki, K. & Richards, P., 2002. *Quantitative Seismology*, University Science Books.
- Alley, R.B., 1992. Flow-law hypotheses for ice-sheet modeling, *J. Glaciol.*, **129**, 245–256.
- Baig, A.M. & Dahlen, F.A., 2004. Statistics of traveltimes and amplitudes in random media, *Geophys. J. Int.*, **158**, 187–210.
- Bennett, H.F., 1968. *An investigation into velocity anisotropy through measurements of ultrasonic wave velocities in snow and ice cores from Greenland and Antarctica*, PhD thesis, University of Wisconsin, Madison.
- Bentley, C.R., 1972. Seismic-wave velocities in anisotropic ice: A comparison of measured and calculated values in and around the deep drill hole at Byrd Stations, Antarctica, *J. Geophys. Res.*, **77**, 4406–4420.
- Bernauer, F. et al., 2021. Rotation, strain, and translation sensors performance tests with active seismic sources, *Sensors*, **21**, doi:10.3390/s21010264.
- Blankenship, D.D. & Bentley, C.R., 1987. The crystalline fabric of polar ice sheets inferred from seismic anisotropy, *IAHS Publ.*, **170**, 17–28.
- Booth, A.D. et al., 2020. Distributed Acoustic Sensing of seismic properties in a borehole drilled on a fast-flowing Greenlandic outlet glacier, *Geophys. Res. Lett.*, **47**, doi:10.1029/2020GL088148.
- Brisbourne, A.M., Kendall, M., Kufner, S.-K., Hudson, T.S. & Smith, A.M., 2021. Downhole distributed acoustic profiling at the Skytrain Ice Rise, West Antarctica, *Cryosphere*, **15**, doi.org/10.5194/tc-15-3443-2021.
- Brockamp, B. & Pistor, P., 1967. Ein Beitrag zur seismischen Erforschung des Grönländischen Inlandeises, *Polarforschung*, **37**(6), 133–146.
- Chaves, C.A.M., Ritsema, J. & Koelemeijer, P., 2021. Comparing ray-theoretical and finite-frequency teleseismic traveltimes: implications for constraining the ratio of S-wave to P-wave velocity variations in the lower mantle, *Geophys. J. Int.*, **224**, 1540–1552.
- Church, J.A. et al., 2013. Sea level change, in *Climate Change 2013: The Physical Science Basis. Contribution of Working Group I to the Fifth Assessment Report of the Intergovernmental Panel on Climate Change*, Cambridge University Press, Cambridge, UK.
- Dahlen, F., S.-H. Hung & G.Nolet, 2000. Fréchet kernels for finite-frequency traveltimes—I. Theory, *Geophys. J. Int.*, **141**, 157–174.
- Daley, T.M., Pevzner, R., Shulakova, V., Kashikar, S., Miller, D.E., Goetz, J., Hennings, J. & Lueth, S., 2013. Field testing of fiber-optic distributed acoustic sensing, DAS) for subsurface seismic monitoring, *Leading Edge*, 936–942.
- Daley, T.M., White, D., Miller, D.E., Robertson, M., Freifeld, B., Herkenhoff, F. & Cocker, J., 2014. Simultaneous acquisition of distributed acoustic sensing VSP with multi-mode and single-mode optical cables and 3-component geophones at the Aquistore CO₂ storage site, *SEG Extended Abstr.*, **2014**, 5014–5018.
- Diez, A. & Eisen, O., 2015. Seismic wave propagation in anisotropic ice - Part I: elasticity tensor and derived quantities from ice-core properties, *Cryosphere*, **9**, 367–384.
- Diez, A. et al., 2015. Seismic wave propagation in anisotropic ice - Part 2: effects of crystal anisotropy in geophysical data, *Cryosphere*, **9**, 385–398.
- Diez, A., Eisen, O., Weikusat, J.E.I., Hofstede, C., Bohleber, P., Bohlen, T. & Polom, U., 2014. Influence of ice crystal anisotropy on seismic velocity analysis, *Ann. Glaciol.*, **55**, 97–106.
- Diprinzio, C.L., Wilen, L.A., Alley, R.B., Fitzpatrick, J.J., Spencer, M.K. & Gow, A.J., 2005. Fabric and texture at Siple Dome, Antarctica, *J. Glaciol.*, **51**, 281–290.
- Durand, G., 2007. Change in ice rheology during climate variations – implications for ice flow modelling and dating of the EPICA Dome C core, *Clim. Past*, **3**, 155–167.
- Fahnestock, M., Bindshadler, R., Kwok, R. & Jezek, K., 1993. Greenland Ice Sheet surface properties and ice dynamics from ERS-1 SAR imagery, *Science*, **262**, 1530–1534.
- Faria, S.H., Weikusat, I. & Azuma, N., 2013. The microstructure of polar ice. Part I: highlights from ice core research, *J. Struct. Geol.*, **61**, 2–20.
- Faria, S.H., Weikusat, I. & Azuma, N., 2014. The microstructure of polar ice. Part II: state of the art, *J. Struct. Geol.*, **61**, 21–49.
- Fichtner, A., 2010. *Full Seismic Waveform Modelling and Inversion*, Springer, Heidelberg.
- Fichtner, A., 2021. *Lecture Notes on Inverse Theory*, Cambridge Open Engage, doi:10.33774/coe-2021-qpq2j.
- Fichtner, A., Hofstede, C., Kennett, B.L.N., Nyman, N.F., Lauritzen, M.L., Zigone, D. & Eisen, O., 2023. Fiber-optic airplane seismology on the Northeast Greenland Ice Stream, *Seismic Record*, doi:10.1785/0320230004.
- Fichtner, A., Klaasen, S., Thrastarson, S., Cubuk-Sabuncu, Y., Paitz, P. & Jonsdottir, K., 2022. Fiber-optic observation of volcanic tremor through floating ice-sheet resonance, *Seismic Record*, **2**, 148–155.
- Fischer, H., Siggaard-Andersen, M.-L., Ruth, U., Röthlisberger, R. & Wolff, E., 2007. Glacial/interglacial changes in mineral dust and sea-salt records in polar ice cores: Sources, transport, and deposition, *Rev. Geophys.*, **45**, doi:10.1029/2005RG000192.

- Franke, S. *et al.*, 2022. Airborne ultra-wideband radar sounding over the shear margins & along flow lines at the onset region of the Northeast Greenland Ice Stream, *Earth Syst. Sci. Data*, **14**, 763–779.
- Gerber, T.A. *et al.*, 2023. Crystal orientation fabric anisotropy causes directional hardening of the Northeast Greenland Ice Stream, *Nat. Comm.*, **14**, doi:10.1038/s41467-023-38139-8.
- Helm, V., Humbert, A. & Miller, H., 2014. Elevation and elevation change of Greenland and Antarctica derived from CryoSat-2, *Cryosphere*, **8**, 1539–1559.
- Horgan, H.J., Anandakrishnan, S., Alley, R.B., Burkett, P.G. & Peters, L.E., 2011. Englacial seismic reflectivity: imaging crystal orientation fabric in West Antarctica, *J. Glaciol.*, **57**, 639–650.
- Hudson, T.S. *et al.*, 2021. Distributed Acoustic Sensing (DAS) for natural microseismicity studies: a case study from Antarctica, *J. geophys. Res.*, **126**, doi:10.1029/2020JB021493.
- Joughin, I., Smith, B.E. & Howat, I.M., 2018. A complete map of Greenland ice velocity derived from satellite data collected over 20 years, *J. Glaciol.*, **64**, doi:10.1017/jog.2017.73.
- Kennett, B. L.N., 2001. *The Seismic Wavefield I—Introduction and Theoretical Development*, Cambridge University Press.
- Kerch, J.K., 2016. *Crystal-orientation fabric variations on the cm-scale in cold Alpine ice: Interaction with paleo-climate proxies under deformation and implications for the interpretation of seismic velocities*. Doctoral thesis, Ruperto-Carola University of Heidelberg, Germany.
- Khan, S.A. *et al.*, 2022. Extensive inland thinning and speed-up of Northeast Greenland Ice Stream, *Nature*, **611**, doi:10.1038/s41586-022-05301-z.
- Khan, S.A. *et al.*, 2014. Sustained mass loss of the Northeast Greenland Ice Sheet triggered by regional warming, *Nat. Clim. Change*, **4**, doi:10.1038/nclimate2161.
- King, M.D. *et al.*, 2020. Dynamic ice loss from the Greenland Ice Sheet driven by sustained glacier retreat, *Comm. Earth Env.*, **1**, doi:10.1038/s43247-020-0001-2.
- Klaasen, S., Paitz, P., Lindner, N., Dettmer, J. & Fichtner, A., 2021. Distributed Acoustic Sensing in volcano-glacial environments – Mount Meager, British Columbia, *J. geophys. Res.*, **159**, doi:10.1029/2021JB022358.
- Klaasen, S., Thrastarson, S., Fichtner, A., Cubuk-Sabuncu, Y. & Jonsdottir, K., 2022. Sensing Iceland's most active volcano with a "buried hair", *EOS*, **103**, doi:10.1029/2022EO220007.
- Kohnen, H., 1972. Über die Beziehung zwischen seismischen Geschwindigkeiten und der Dichte in Firn und Eis, *Zeitschrift f. Geophys.*, **38**, 925–935.
- Kohnen, H., 1974. The temperature dependence of seismic waves in ice, *J. Glaciol.*, **13**, 144–147.
- Kohnen, H. & Bentley, C.R., 1973. Seismic refraction and reflection measurements at Byrd Station, Antarctica, *J. Glaciol.*, **12**, 101–111.
- Lindsey, N.J., Rademacher, H. & Ajo-Franklin, J.B., 2020. On the broadband instrument response of fiber-optic DAS arrays, *J. geophys. Res.*, **125**, doi:10.1029/2019JB018145.
- Liu, Q. & Gu, Y., 2012. Seismic imaging: from classical to adjoint tomography, *Tectonophysics*, **566–567**, 31–66.
- Løkkegaard, A. *et al.*, 2022. Greenland and Canadian arctic ice temperature profiles, *Cryosphere Discuss.*, **2022**, 1–24.
- Luo, Y. & Schuster, G.T., 1991. Wave-equation traveltimes inversion., *Geophysics*, **56**, 645–653.
- Mankoff, K.D. *et al.*, 2019. Greenland Ice Sheet solid ice discharge from 1986 through 2017, *Earth Syst. Sci. Data*, **11**, 769–786.
- Marquering, H., Dahlen, F.A. & Nolet, G., 1999. Three-dimensional sensitivity kernels for finite-frequency traveltimes: the banana-doughnut paradox, *Geophys. J. Int.*, **137**, 805–815.
- Martin, C., Gudmundsson, G.H., Pritchard, H.D. & Gagliardini, O., 2009. On the effects of anisotropic rheology on ice flow, internal structure, and the age-depth relationship at ice divides, *J. geophys. Res.*, **114**, doi:10.1029/2008JF001204.
- Mateeva, A. *et al.*, 2013. Distributed acoustic sensing for reservoir monitoring with VSP, *Leading Edge*, **32**, 1278–1283.
- Mateeva, A. *et al.*, 2014. Distributed acoustic sensing for reservoir monitoring with vertical seismic profiling, *Geophys. Prosp.*, **62**, 679–692.
- Mojtabavi, S. *et al.*, 2022. Origin of englacial stratigraphy at three deep ice core sites of the Greenland Ice Sheet by synthetic radar modelling, *J. Glac.*, **68**, 799–811.
- Mojtabavi, S. *et al.*, 2020. A first chronology for the East Greenland Ice-core Project, EGRIP over the Holocene and last glacial termination, *Clim. Past*, **16**, doi:10.5194/cp-16-2359-2020.
- Mouginot, J. *et al.*, 2019. Forty-six years of Greenland Ice Sheet mass balance from 1972–2018, *Proc. Natl. Acad. Sci. USA*, **116**, 9239–9244.
- Nocedal, J., 1980. Updating quasi-Newton matrices with limited storage, *Math. Comp.*, **35**, 773–782.
- Nocedal, J. & Wright, S.J., 1999. *Numerical Optimization*, Springer, New York.
- Paitz, P., Edme, P., Gräff, D., Walter, F., Doetsch, J., Chalari, A., Schmelzbach, C. & Fichtner, A., 2021. Empirical investigations of the instrument response for distributed acoustic sensing (DAS) across 17 octaves, *Bull. seism. Soc. Am.*, **111**, 1–10.
- Pearce, E., Booth, A.D., Rost, S., Sava, P., Konuk, T., Brisbourne, A., Hubbard, B. & Jones, I., 2023. Characterising ice slabs in firn using seismic full waveform inversion, a sensitivity study, *J. Glaciol.*, 1–15.
- Pettit, E.C., Thorsteinsson, T., Jacobson, H.P. & Waddington, E.D., 2007. The role of crystal fabric in flow near an ice divide, *J. Glaciol.*, **53**, 277–288.
- Picotti, S., Vuan, A., Carcione, J.M., Horgan, H.J. & Anandakrishnan, S., 2015. Anisotropy and crystalline fabric of Whillans Ice Stream, West Antarctica) inferred from multicomponent seismic data, *J. geophys. Res.*, **120**, 4237–4262.
- Rignot, E. & Mouginot, J., 2012. Ice flow in Greenland for the international polar year 2008-2009, *Geophys. Res. Lett.*, **39**, doi:10.1029/2012GL051634.
- Samyn, D., Svensson, A., Fitzsimins, S.J. & Lorrain, R.D., 2005. Ice crystal properties of amber ice and strain enhancement at the base of cold Antarctic glaciers, *Ann. Glaciol.*, **40**, 185–190.
- Schlegel, R. *et al.*, 2019. Comparison of elastic moduli from seismic diving-wave and ice-core microstructure analysis in antarctic polar firn, *Ann. Glaciol.*, **60**, 220–230.
- Sheldon, S.G. *et al.*, 2014. The investigation and experience of using ESTISOL™240 and COASOL™ for ice-core drilling, *Ann. Glac.*, **55**, 219–232.
- Turin, G.L., 1960. An introduction to matched filters, *IRE Trans. Inf. Theo.*, **6**, 311–329.
- Vallelonga, P. *et al.*, 2014. Initial results from geophysical surveys and shallow coring of the Northeast Greenland Ice Stream, BEGIS), *Cryosphere*, **8**, 1275–1287.
- Virieux, J. & Operto, S., 2009. An overview of full waveform inversion in exploration geophysics., *Geophysics*, **74**, WCC127–WCC152.
- Walter, F., Gräff, D., Lindner, F., Paitz, P., Köpfl, M., Chmiel, M. & Fichtner, A., 2020. Distributed acoustic sensing of microseismic sources and wave propagation in glaciated terrain, *Nat. Comm.*, **11**, doi:10.1038/s41467-020-15824.
- Zhou, W., Butcher, A., Brisbourne, A., Kufner, S.-K., Kendall, J.-M. & Stork, A., 2023. Seismic noise interferometry and distributed acoustic sensing, DAS: measuring the firn layer S-velocity structure on Rutford Ice Stream, Antarctica, *J. geophys. Res.*, **127**, doi:10.1029/2022JF006917.