



**HAL**  
open science

# Unmasking the Hidden Meaning: Bridging Implicit and Explicit Hate Speech Embedding Representations

Nicolás Benjamín Ocampo, Elena Cabrio, Serena Villata

► **To cite this version:**

Nicolás Benjamín Ocampo, Elena Cabrio, Serena Villata. Unmasking the Hidden Meaning: Bridging Implicit and Explicit Hate Speech Embedding Representations. EMNLP 2023 - Conference on Empirical Methods in Natural Language Processing, Dec 2023, Singapore, France. pp.6626-6637, 10.18653/v1/2023.findings-emnlp.441 . hal-04351644v1

**HAL Id: hal-04351644**

**<https://hal.science/hal-04351644v1>**

Submitted on 19 Dec 2023 (v1), last revised 17 Jul 2024 (v2)

**HAL** is a multi-disciplinary open access archive for the deposit and dissemination of scientific research documents, whether they are published or not. The documents may come from teaching and research institutions in France or abroad, or from public or private research centers.

L'archive ouverte pluridisciplinaire **HAL**, est destinée au dépôt et à la diffusion de documents scientifiques de niveau recherche, publiés ou non, émanant des établissements d'enseignement et de recherche français ou étrangers, des laboratoires publics ou privés.

# Unmasking the Hidden Meaning: Bridging Implicit and Explicit Hate Speech Embedding Representations

Nicolas Ocampo and Elena Cabrio and Serena Villata

Universite Côte d’Azur, CNRS, Inria, I3S, France

{nicolas-benjamin.ocampo,elena.cabrio,serena.villata}@univ-cotedazur.fr

## Abstract

Research on automatic hate speech (HS) detection has mainly focused on identifying explicit forms of hateful expressions on user-generated content. Recently, a few works have started to investigate methods to address more implicit and subtle abusive content. However, despite these efforts, automated systems still struggle to correctly recognize implicit and more veiled forms of HS. As these systems heavily rely on proper textual representations for classification, it is crucial to investigate the differences in embedding implicit and explicit messages. Our contribution to address this challenging task is fourfold. First, we present a comparative analysis of transformer-based models, evaluating their performance across five datasets containing implicit HS messages. Second, we examine the embedding representations of implicit messages across different targets, gaining insight into how veiled cases are encoded. Third, we compare and link explicit and implicit hateful messages across these datasets through their targets, enforcing the relation between explicitness and implicitness and obtaining more meaningful embedding representations. Lastly, we show how these newer representation maintains high performance on HS labels, while improving classification in borderline cases.

## 1 Introduction

The proliferation of hate speech (HS) on social media platforms has become a pressing concern in online social communities. While significant progress has been made in the development of HS detection methods, current SOTA models focus on detecting explicit HS, leaving implicit hate cases undetected (ElSherief et al., 2021; Ocampo et al., 2023). This issue is aggravated by the sheer volume of implicit hate speech content being spread across various online platforms, necessitating automated approaches to detect them effectively.

Implicit HS detection poses unique challenges compared to its explicit counterpart: it contains

coded, ambiguous or indirect language that does not immediately denote hate, but still disparages a person or a group based on protected characteristics such as race, gender, cultural identity, or religion (e.g., “*I think it is a bit late to think to look after the safety and the future of white people in South-Africa*” - the White Supremacy Forum Dataset (de Gibert et al., 2018)). The performance of current HS systems heavily relies on how coded language is represented and how well classifiers can capture the underlying semantic meaning of messages through embeddings. Hence, obtaining better text representation becomes crucial in effectively identifying implicit HS messages.

In this direction, the goal of our work is to bridge the gap between explicit and implicit messages, aiming to enhance the embedding representations of SOTA models. Our contribution is fourfold: *i*) We analyze the embedding representations of five benchmark datasets with veiled hateful content, examining the levels of explicitness and implicitness, through cross-evaluation using state-of-the-art transformer models. *ii*) We examine the embedding representations of implicit messages across different target groups. Through this analysis, we gain insights into how implicit HS messages are encoded based on their target groups. *iii*) We propose a novel approach to link explicit and implicit HS messages in the representation space. *iv*) We illustrate that the newer representation space preserves strong efficacy for HS labels, while also refining classification in borderline instances. Using contrastive learning techniques (Gunel et al., 2020; Rethmeier and Augenstein, 2021; Kim et al., 2022; Tian et al., 2020), we aim to push explicit and implicit messages effectively enforcing the uncovered relation between these two notions and thereby obtaining more meaningful representations than those obtained through fine-tuning learning methods.<sup>1</sup>

<sup>1</sup>The accompanying software can be found at: [https://github.com/benjaminocampo/bridging\\_ie\\_hs\\_embs](https://github.com/benjaminocampo/bridging_ie_hs_embs).

*NOTE: This paper contains examples of language which may be offensive to some readers. They do not represent the views of the authors.*

## 2 Related Work

HS detection has been extensively studied by the research community providing multiple resources, such as lexicons (Wiegand et al., 2018; Bassigiana et al., 2018), datasets (Zampieri et al., 2019; Basile et al., 2019; Davidson et al., 2017; Founta et al., 2018), and supervised methods (Park and Fung, 2017; Gambäck and Sikdar, 2017; Wang et al., 2020; Lee et al., 2019) (for a survey, see (Poletto et al., 2021)). These studies provide a solid starting point to examine the problem of abusive language, especially in social media messages. Lately, there has been growing interest in the detection of implicit HS, which provides additional challenges. Datasets specifically designed for implicit HS (Ocampo et al., 2023; Hartvigsen et al., 2022; ElSherief et al., 2021; Vidgen et al., 2021; Sap et al., 2020), more solid veiled detectors (Han and Tsvetkov, 2020), guided augmentation strategies (Nejadgholi et al., 2022; Roychowdhury and Gupta, 2023), and theoretical analysis (Jurgens et al., 2019; Waseem et al., 2017; Wiegand et al., 2021) have been recently proposed to advance in this direction.

However, little attention has been dedicated to effectively represent implicit messages through embeddings on these benchmarks. Embeddings play a crucial role in the performance of classifiers (Pavlopoulos et al., 2017; Kshirsagar et al., 2018; Ocampo et al., 2023), yet their application to capture the implicit nature of HS has been under-investigated. In this direction, (Kim et al., 2022) tackles cross-dataset underperforming issues on HS classifiers and proposes a contrastive learning method that encodes a hateful post and its corresponding implication close in representation space, closely depending on the annotated implications and without contra positioning explicitness with implicitness. (Bourgeade et al., 2023) captures topic-generic and topic-specific knowledge when trained on different data to improve generalization.

## 3 Implicit and Explicit HS Embeddings

### 3.1 Research Questions

We will focus on the behavior of SOTA models in cross-evaluation settings, specifically on datasets containing implicit hate. The study explores the models' behavior on different HS classes, including

both explicit and implicit hate. In particular, we target the following research questions (RQ):

**RQ1:** How do the models' embeddings capture the HS classes? Are explicit and implicit hateful messages encoded differently across different datasets? What is the extent of this variation?

**RQ2:** Does grouping the test sets by target result in similar encoding patterns for explicit HS and distinct encoding patterns for implicit HS in the embeddings? RQ2 builds upon the analysis conducted in RQ1, but with a focus on target groups.

**RQ3:** Can we link and bring explicit and implicit embedding representations closer together within the learned embedding space through their target groups?

**RQ4:** How do these newer embedding representations capture HS classes in comparison with RQ1?

### 3.2 Datasets

We carried out our analysis on the following standard datasets, containing implicit HS messages: Implicit Subtle Hate (ISHate) (Ocampo et al., 2023), Social Bias Inference (SBIC) (Sap et al., 2020), Implicit Hate Corpus (IHC) (ElSherief et al., 2021), Dynahate (DYNA) (Vidgen et al., 2021), and Toxigen (TOX) (Hartvigsen et al., 2022). We ensured that the definitions of HS were consistent across the datasets. Specifically, for the SBIC dataset, messages are considered as HS if labeled as offensive and target a specific group. As for the explicit-implicit HS labeling across all datasets, the provided implicit labels are used for IHC and ISHate datasets. For SBIC, DYNA, and TOX, we computed the percentage of HS implicit messages as the ones where none of the words of the Google profanity words resource was present<sup>2</sup>. The datasets were divided into train, dev, and test sets. Existing dataset splits were retained, while datasets without predefined splits were divided using a stratified splitting method with a 60% train, 20% dev, and 20% test ratio. Table 4 in Appendix shows the percentage of implicit/explicit instances per dataset.

### 3.3 Experimental Settings

Concerning our research questions (Section 3.1), to answer to **RQ1** we performed fine-tuning on two state-of-the-art models commonly used for HS detection: BERT and HateBERT (Caselli et al., 2021). Both models were fine-tuned on each dataset using

<sup>2</sup>List of swear words banned by Google: <https://github.com/RobertJGabriel/Google-profanity-words>

a two-label classification approach, distinguishing between non-HS and HS messages. To ensure robustness and account for randomness in the training process, we repeated the fine-tuning procedure five times, each time employing a different random seed. This allowed us to evaluate the performance of the models consistency. To assess the performance of the models, we cross-evaluate the benchmarks calculating the average F1-score across all fine-tuning runs. Additionally, we calculated the standard deviation to quantify the variability in performance observed across the different runs. Finally, we calculated the embeddings of these models using TSNE highlighting how explicit and implicit messages were encoded. We used the base versions size of these models with batch size of 32, weight decay of 0.01, 4 epochs, and a learning rate of  $2e-5$ . As for TSNE, we use perplexity of 30, and 1000 maximum iterations for convergence.

For **RQ2**, we grouped the embeddings per target in the plots. To ensure consistency across datasets, we standardized the target names, addressing label variations, e.g., we resolved differences like "asian" and "asian people" by using a unified label. Moreover, when a message targeted multiple offensive groups (e.g. Asians and Migrants), we selected the label corresponding to the predominant target (among MUSLIMS, WOMEN, JEWS, LGBTQ+, BLACK PEOPLE, WHITE PEOPLE, IMMIGRANTS, ASIAN, and DISEASE).

For **RQ3**, we aim to validate the potential linkage between explicit and implicit messages through their target groups. To achieve this, we employ contrastive learning techniques on the pre-trained and fine-tuned models. Contrastive learning involves defining pairs of positive and negative samples and training the model using a modified loss function. In our experimental settings, we designate pairs of implicit and explicit messages with the same target as positive samples. For each implicit ones, a randomly selected explicit message with the same target is paired. In cases where they are unavailable or when the implicit instance lacks a target label, we randomly assign any explicit message. Negative samples consist of pairs of HS and Non-HS instances. For every Non-HS instance, one HS instance is randomly selected. Using contrastive learning facilitates the training process by pushing positive pairs closer together while pushing negative pairs further apart within the embedding space.

The contrastive loss is defined as follows:

$$\text{loss\_cont} = \text{mean} \left( (1-l) \cdot s^2 + l \cdot (\max(0, m-s))^2 \right) \quad (1)$$

Where  $l$  represents the label pair (1 for positive pairs, 0 for negative pairs),  $s$  is the cosine similarity between paired messages, and  $m$  is the margin hyper-parameter. For classification, the cross-entropy loss is:

$$\text{loss\_clf} = - \sum_{i=0}^{N-1} (g_i \log(p_i) + (1-g_i) \log(1-p_i)) \quad (2)$$

Where  $g$  is the gold label (labels of the dataset on which the model is fine-tuned) and  $p$  is the prediction. The final loss is:

$$\text{total\_loss} = \text{loss\_cont} + \text{loss\_clf} \quad (3)$$

By combining them, we optimize both the model's understanding of embeddings and classification.

For **RQ4**, we fine-tuned both BERT and HateBERT using our enhanced embeddings (same settings of our initial RQs). Additionally, to gain more targeted diagnostic insights, models' accuracy was evaluated on three categories defined on the SBIC dataset (Non-HS, Explicit HS, and Implicit HS), and the HateCheck dataset (Röttger et al., 2021), a suite of functional tests for HS detection models.

### 3.4 Obtained Results and Discussion

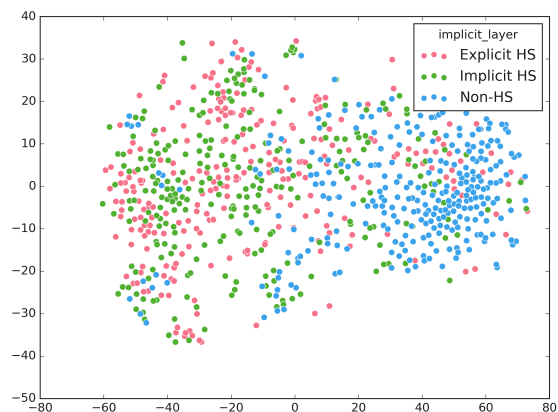


Figure 1: **RQ1**: TSNE embeddings of the SBIC test set using HateBERT fine-tuned on DYNA.

Regarding **RQ1**, Table 1a shows that training and evaluating HateBERT (BERT results can be found in the Appendix) on the same dataset yields

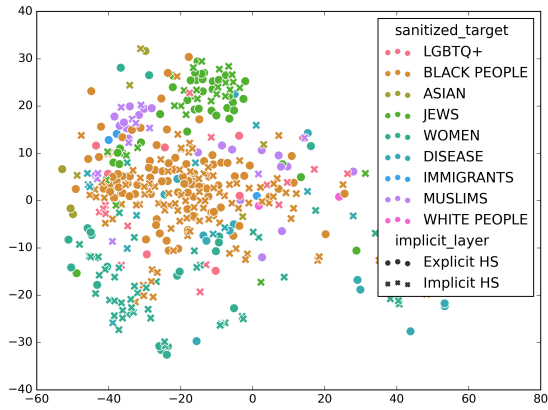
Train \ Test	IHC	SBIC	DYNA	ISHate	TOX
IHC	0,7618 ± 0,0027	0,6824 ± 0,0129	0,5679 ± 0,0522	0,6959 ± 0,0238	0,5896 ± 0,0119
SBIC	0,6385 ± 0,0310	0,8632 ± 0,0099	0,6355 ± 0,0399	0,7522 ± 0,0153	0,6998 ± 0,0086
DYNA	0,6717 ± 0,0310	0,7473 ± 0,0357	0,7860 ± 0,0111	0,7602 ± 0,0025	0,7526 ± 0,0075
ISHate	0,6188 ± 0,0052	0,7209 ± 0,0400	0,6190 ± 0,0064	0,8684 ± 0,0035	0,6034 ± 0,0045
TOX	0,5063 ± 0,0140	0,5428 ± 0,0133	0,4952 ± 0,0197	0,5900 ± 0,0195	0,7650 ± 0,0102

(a) Cross-evaluation results with HateBERT.

Train \ Test	IHC	SBIC	DYNA	ISHate	TOX
IHC	0,7433 ± 0,0107	0,6618 ± 0,0173	0,5415 ± 0,0092	0,6678 ± 0,0058	0,5843 ± 0,0153
SBIC	<b>0,6593 ± 0,0095</b>	0,8620 ± 0,0064	<b>0,6591 ± 0,0069</b>	<b>0,7583 ± 0,0086</b>	0,6742 ± 0,0208
DYNA	0,6520 ± 0,0102	0,7323 ± 0,0116	0,7831 ± 0,0030	0,7566 ± 0,0135	0,7147 ± 0,0075
ISHate	<b>0,6253 ± 0,0060</b>	0,6753 ± 0,0442	0,6165 ± 0,0116	0,8394 ± 0,0064	0,5973 ± 0,0210
TOX	<b>0,5354 ± 0,0210</b>	<b>0,5637 ± 0,0346</b>	<b>0,5202 ± 0,0098</b>	<b>0,6180 ± 0,0256</b>	0,7610 ± 0,0103

(b) Cross-evaluation results with Contrastive HateBERT. Bold values indicate improvements compared to Table 1a.

Table 1: HateBERT and Contrastive HateBERT cross-evaluation results with five different run seeds.

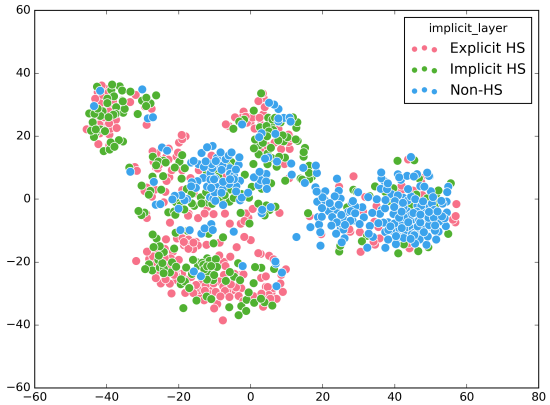
Figure 2: **RQ2**: TSNE embeddings of the SBIC test set using HateBERT fine-tuned on DYNA based on their target groups. Non-HS are excluded from the plot.

better results overall, as could be expected. However, even in cross-evaluation scenarios, reasonable performances are observed. Notably, among the most generalizable models, HateBERT trained on DYNA exhibits better generalization. We therefore selected HateBERT trained on DYNA as the best configuration and we plot the embeddings for the test sets of all the datasets, applying the TSNE algorithm. Figure 1 shows how explicit HS and non-HS messages are encoded with clear separation, resulting in a noticeable distance between them.<sup>3</sup> On the other hand, implicit HS instances tend to be intertwined with both non-HS and explicit HS messages. This pattern holds true across all 5 datasets.

As for the results for **RQ2**, Figure 2 shows ex-

<sup>3</sup>Due to space constraints, we show only the plots of the TSNE embeddings of the SBIC test set using HateBERT fine-tuned on DYNA. The plots showing the embeddings for all the other test sets can be found in the Appendix.

PLICIT and implicit text representations per target group highlighting how, in general, embeddings of explicit and implicit messages tend to be linked by their target groups in representation spaces. Finally, as for **RQ3**, Figure 3 demonstrates that the embedding representations of explicit and implicit instances starts to overlap across all datasets when using HateBERT trained on DYNA. Additionally, Figure 4 highlights that by leveraging the targets of HS using contrastive learning, explicit and implicit messages exhibit a similar representation.

Figure 3: **RQ3**: TSNE embeddings of the SBIC test set using HateBERT fine-tuned on DYNA and linking explicit and implicit instances.

As for **RQ4**, Table 1b illustrates that the novel representation enhances the F1-score for certain datasets, such as SBIC, TOX, and ISHate. Conversely, for other datasets like IHC and DYNA, the performance remains comparable to that of the non-contrastive approach. Table 2 shows higher capability of the contrastive

Test Case	HateBERT IHC	Contrastive IHC	HateBERT SBIC	Contrastive SBIC	HateBERT DYNA	Contrastive DYNA	HateBERT ISHate	Contrastive ISHate	HateBERT TOX	Contrastive TOX
counter_quote_nh	.486 ± .082	<b>.499 ± .085</b>	.276 ± .213	<b>.422 ± .114</b>	.857 ± .048	<b>.962 ± .027</b>	.379 ± .079	<b>.524 ± .160</b>	0 ± 0	<b>.010 ± .009</b>
counter_ref_nh	.576 ± .045	<b>.617 ± .086</b>	.240 ± .168	<b>.393 ± .144</b>	.882 ± .018	<b>.902 ± .037</b>	.387 ± .038	<b>.521 ± .187</b>	.177 ± .043	<b>.295 ± .117</b>
ident_pos_nh	.441 ± .020	.446 ± .136	.301 ± .076	<b>.361 ± .038</b>	.849 ± .021	.767 ± .099	.272 ± .071	<b>.350 ± .101</b>	.470 ± .126	<b>.575 ± .133</b>
negate_neg_nh	.502 ± .054	<b>.517 ± .134</b>	.120 ± .060	<b>.161 ± .104</b>	.448 ± .037	<b>.486 ± .040</b>	.164 ± .030	<b>.211 ± .106</b>	.087 ± .036	<b>.194 ± .077</b>
profanity_nh	.796 ± .036	.774 ± .076	.922 ± .099	<b>.994 ± .005</b>	1 ± 0	1 ± 0	.992 ± .004	<b>.996 ± .005</b>	.292 ± .101	<b>.456 ± .105</b>
slur_homonym_nh	.353 ± .061	<b>.413 ± .084</b>	.393 ± .162	<b>.513 ± .099</b>	.813 ± .030	.787 ± .073	.680 ± .056	<b>.827 ± .101</b>	.320 ± .051	<b>.473 ± .064</b>
slur_reclaimed_nh	.217 ± .045	<b>.277 ± .084</b>	.472 ± .196	<b>.711 ± .117</b>	.891 ± .018	.879 ± .044	.741 ± .070	<b>.802 ± .113</b>	.272 ± .031	<b>.346 ± .067</b>
target_group_nh	.710 ± .036	.700 ± .027	.623 ± .328	<b>.810 ± .072</b>	.968 ± 0	<b>.971 ± .021</b>	.448 ± .027	<b>.561 ± .085</b>	0 ± 0	<b>.006 ± .014</b>
target_indiv_nh	.538 ± .049	<b>.572 ± .104</b>	.655 ± .451	<b>.951 ± .028</b>	1 ± 0	1 ± 0	.782 ± .032	<b>.809 ± .061</b>	.003 ± .007	.003 ± .007
target_obj_nh	.637 ± .042	.622 ± .105	.923 ± .086	<b>.966 ± .037</b>	.969 ± .011	<b>.985 ± .015</b>	.735 ± .013	<b>.757 ± .073</b>	.006 ± .008	<b>.034 ± .035</b>

Table 2: Comparative accuracy performance of HateBERT vs Contrastive HateBERT trained in each dataset and evaluated across various test cases on HateCheck.

Train	Explicit	Implicit	Non-HS
IHC	0.8832	0.8842	0.4659
SBIC	0.8971	0.8440	0.8568
DYNA	0.6071	0.6665	0.8314
ISHate	0.5515	0.4676	0.8768
TOX	0.7938	0.8617	0.3439

Table 3: Contrastive HateBERT avg accuracy across Explicit, Implicit, and Non-HS (SBIC test set).

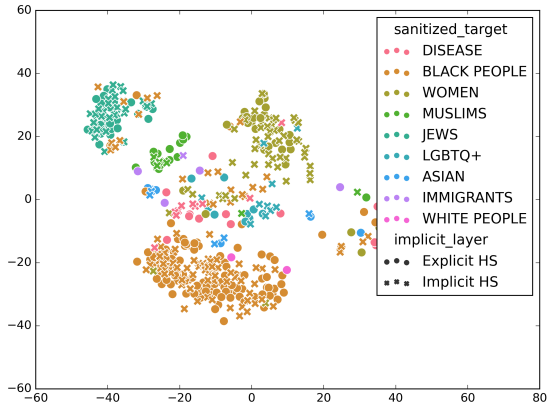


Figure 4: **RQ3**: TSNE embeddings of the SBIC test set using HateBERT fine-tuned on DYNA based on their target groups. Non-HS are excluded from the plot.

HateBERT in accurately classifying challenging Non-HS messages across all five datasets. A significant reduction in false positives is also observed in HateCheck categories such as quoted announcements (counter\_quote\_nh), direct references (counter\_ref\_nh), positive identifiers (ident\_pos\_nh), negated hateful remarks (negate\_neg\_nh), non-hateful profanity (profanity\_nh), reclaimed slurs (slur\_reclaimed\_nh), homonym slurs (slur\_homonym\_nh), as well as targeted abuse directed at individuals (target\_indiv\_nh), objects (target\_obj\_nh), and non-protected groups (target\_group\_nh). Additionally, Table 3 indicates that both Explicit and Implicit categories exhibit similarly high accuracy levels,

highlighting their nearly indistinguishable impact on the model’s aggregate performance. Also, the importance of the Non-HS category is underscored, varying with different training datasets, yet remaining a critical component.

Hence, our experiments emphasize the importance of studying implicit representations, as classical training strategies cannot encode them properly (RQ1). We showed that implicit and explicit messages share a connection conveying similar messages to the same target (RQ2) and how contrastive learning effectively forces that property by bridging explicit and implicit instances through their targets (RQ3), thereby obtaining more meaningful representations that the ones obtained through fine-tuning. Finally, we reduced biases in non-hateful implicit cases often misclassified due to trigger words or nuanced content. Our enhanced method maintains high performance on HS labels while improving classification in borderline cases, proving its robustness and precision (RQ4).

## 4 Conclusions

Our contribution in this study is fourfold: *i*) We studied how models’ embeddings capture HS w.r.t. explicitness and implicitness, *ii*) We showed how explicit and implicit HS messages result in similar encodings if grouped by their protected target, *iii*) We analyzed a contrastive learning method to force this property when representing implicit text. We prove our research hypothesis on 5 HS benchmarks, moving a step forward in bridging the gap between explicitness and implicitness, and *iv*) We show how the newer representation space maintains high performance on HS labels while improving classification in borderline cases. In future work, we’ll refine contrastive learning, delving into contextual pairing based on other semantic dependencies between explicit and implicit cues, aiming to sharpen nuanced hate speech detection.

## Limitations

In this study, we are aware of some key issues, one of which pertains to the selection of positive and negative samples in contrastive learning. The effectiveness of the algorithm heavily relies on the careful selection of these pairs. While our investigation demonstrates that explicit and implicit messages exhibit a relationship through their target groups across five distinct datasets, it is important to acknowledge that this assumption may not always hold true. Additionally, ensuring a clear separation between non-hateful and HS instances can be challenging due to the heterogeneity of each category.

Moreover, the efficacy of our approach is contingent upon the availability and alignment of target information across the datasets. While target information is commonly provided in benchmark datasets, different datasets may address various protected characteristics. Our approach assumes that there is some degree of overlap in terms of target groups among the selected datasets.

Furthermore, the selection of pairs when linking explicit and implicit messages can vary in terms of the number of combinations. However, it is important to note that as the number of pairs increases, the training requirements tend to grow significantly, resulting in slower training processes. This trade-off between the number of pairs and training efficiency should be carefully considered when implementing the approach.

## Ethics Statement

This paper uses a collection of HS examples extracted from linguistic resources commonly employed for HS detection, ensuring their independence from the authors' personal opinions. The datasets used in this study have been meticulously handled to address privacy concerns associated with user data. While we acknowledge the potential for misuse, we firmly believe that developing robust HS classifiers is essential in combating the proliferation of harmful content. In this regard, our work represents a significant contribution towards this objective and encourages further exploration and investigation within the scientific community.

## Acknowledgements

This work has been supported by the French government, through the 3IA Côte d'Azur Investments in the Future project managed by the National Re-

search Agency (ANR) with the reference number ANR- 19-P3IA-0002.

## References

- Valerio Basile, Cristina Bosco, Elisabetta Fersini, Debora Nozza, Viviana Patti, Francisco Manuel Rangel Pardo, Paolo Rosso, and Manuela Sanguinetti. 2019. [SemEval-2019 task 5: Multilingual detection of hate speech against immigrants and women in Twitter](#). In *Proceedings of the 13th International Workshop on Semantic Evaluation*, pages 54–63, Minneapolis, Minnesota, USA. Association for Computational Linguistics.
- Elisa Bassignana, Valerio Basile, and Viviana Patti. 2018. [Hurtlex: A Multilingual Lexicon of Words to Hurt](#). In Elena Cabrio, Alessandro Mazzei, and Fabio Tamburini, editors, *Proceedings of the Fifth Italian Conference on Computational Linguistics CLiC-it 2018*, pages 51–56. Accademia University Press.
- Tom Bourgeade, Patricia Chiril, Farah Benamara, and Véronique Moriceau. 2023. [What did you learn to hate? a topic-oriented analysis of generalization in hate speech detection](#). In *Proceedings of the 17th Conference of the European Chapter of the Association for Computational Linguistics*, pages 3495–3508, Dubrovnik, Croatia. Association for Computational Linguistics.
- Tommaso Caselli, Valerio Basile, Jelena Mitrović, and Michael Granitzer. 2021. [HateBERT: Retraining BERT for abusive language detection in English](#). In *Proceedings of the 5th Workshop on Online Abuse and Harms (WOAH 2021)*, pages 17–25, Online. Association for Computational Linguistics.
- Thomas Davidson, Dana Warmusley, Michael Macy, and Ingmar Weber. 2017. [Automated Hate Speech Detection and the Problem of Offensive Language](#). *Proceedings of the International AAAI Conference on Web and Social Media*, 11(1):512–515. Number: 1.
- Ona de Gibert, Naiara Perez, Aitor García-Pablos, and Montse Cuadros. 2018. [Hate speech dataset from a white supremacy forum](#). In *Proceedings of the 2nd Workshop on Abusive Language Online (ALW2)*, pages 11–20, Brussels, Belgium. Association for Computational Linguistics.
- Mai ElSherief, Caleb Ziems, David Muchlinski, Vaishnavi Anupindi, Jordyn Seybolt, Munmun De Choudhury, and Diyi Yang. 2021. [Latent hatred: A benchmark for understanding implicit hate speech](#). In *Proceedings of the 2021 Conference on Empirical Methods in Natural Language Processing*, pages 345–363, Online and Punta Cana, Dominican Republic. Association for Computational Linguistics.
- Antigoni Founta, Constantinos Djouvas, Despoina Chatzakou, Ilias Leontiadis, Jeremy Blackburn, Gianluca Stringhini, Athena Vakali, Michael Sirivianos,

- and Nicolas Kourtellis. 2018. [Large Scale Crowdsourcing and Characterization of Twitter Abusive Behavior](#). *Proceedings of the International AAAI Conference on Web and Social Media*, 12(1). Number: 1.
- Björn Gambäck and Utpal Kumar Sikdar. 2017. [Using convolutional neural networks to classify hate-speech](#). In *Proceedings of the First Workshop on Abusive Language Online*, pages 85–90, Vancouver, BC, Canada. Association for Computational Linguistics.
- Beliz Gunel, Jingfei Du, Alexis Conneau, and Ves Stoyanov. 2020. [Supervised contrastive learning for pre-trained language model fine-tuning](#). *CoRR*, abs/2011.01403.
- Xiaochuang Han and Yulia Tsvetkov. 2020. [Fortifying toxic speech detectors against veiled toxicity](#). In *Proceedings of the 2020 Conference on Empirical Methods in Natural Language Processing (EMNLP)*, pages 7732–7739, Online. Association for Computational Linguistics.
- Thomas Hartvigsen, Saadia Gabriel, Hamid Palangi, Maarten Sap, Dipankar Ray, and Ece Kamar. 2022. [ToxiGen: A large-scale machine-generated dataset for adversarial and implicit hate speech detection](#). In *Proceedings of the 60th Annual Meeting of the Association for Computational Linguistics (Volume 1: Long Papers)*, pages 3309–3326, Dublin, Ireland. Association for Computational Linguistics.
- David Jurgens, Libby Hemphill, and Eshwar Chandrasekharan. 2019. [A just and comprehensive strategy for using NLP to address online abuse](#). In *Proceedings of the 57th Annual Meeting of the Association for Computational Linguistics*, pages 3658–3666, Florence, Italy. Association for Computational Linguistics.
- Youngwook Kim, Shinwoo Park, and Yo-Sub Han. 2022. [Generalizable implicit hate speech detection using contrastive learning](#). In *Proceedings of the 29th International Conference on Computational Linguistics*, pages 6667–6679, Gyeongju, Republic of Korea. International Committee on Computational Linguistics.
- Rohan Kshirsagar, Tyrus Cukuvac, Kathy McKeown, and Susan McGregor. 2018. [Predictive embeddings for hate speech detection on Twitter](#). In *Proceedings of the 2nd Workshop on Abusive Language Online (ALW2)*, pages 26–32, Brussels, Belgium. Association for Computational Linguistics.
- Ju-Hyoung Lee, Jun-U Park, Jeong-Won Cha, and Yo-Sub Han. 2019. [Detecting context abusiveness using hierarchical deep learning](#). In *Proceedings of the Second Workshop on Natural Language Processing for Internet Freedom: Censorship, Disinformation, and Propaganda*, pages 10–19, Hong Kong, China. Association for Computational Linguistics.
- Isar Nejadgholi, Kathleen Fraser, and Svetlana Kiritchenko. 2022. [Improving generalizability in implicitly abusive language detection with concept activation vectors](#). In *Proceedings of the 60th Annual Meeting of the Association for Computational Linguistics (Volume 1: Long Papers)*, pages 5517–5529, Dublin, Ireland. Association for Computational Linguistics.
- Nicolas Ocampo, Ekaterina Sviridova, Elena Cabrio, and Serena Villata. 2023. [An in-depth analysis of implicit and subtle hate speech messages](#). In *Proceedings of the 17th Conference of the European Chapter of the Association for Computational Linguistics*, pages 1997–2013, Dubrovnik, Croatia. Association for Computational Linguistics.
- Ji Ho Park and Pascale Fung. 2017. [One-step and two-step classification for abusive language detection on Twitter](#). In *Proceedings of the First Workshop on Abusive Language Online*, pages 41–45, Vancouver, BC, Canada. Association for Computational Linguistics.
- John Pavlopoulos, Prodromos Malakasiotis, Juli Bakagianni, and Ion Androutsopoulos. 2017. [Improved abusive comment moderation with user embeddings](#). In *Proceedings of the 2017 EMNLP Workshop: Natural Language Processing meets Journalism*, pages 51–55, Copenhagen, Denmark. Association for Computational Linguistics.
- Fabio Poletto, Valerio Basile, Manuela Sanguinetti, Cristina Bosco, and Viviana Patti. 2021. [Resources and benchmark corpora for hate speech detection: a systematic review](#). *Language Resources and Evaluation*, 55(2):477–523.
- Nils Rethmeier and Isabelle Augenstein. 2021. [A primer on contrastive pretraining in language processing: Methods, lessons learned and perspectives](#). *CoRR*, abs/2102.12982.
- Paul Röttger, Bertie Vidgen, Dong Nguyen, Zeerak Waseem, Helen Margetts, and Janet Pierrehumbert. 2021. [HateCheck: Functional tests for hate speech detection models](#). In *Proceedings of the 59th Annual Meeting of the Association for Computational Linguistics and the 11th International Joint Conference on Natural Language Processing (Volume 1: Long Papers)*, pages 41–58, Online. Association for Computational Linguistics.
- Sumegh Roychowdhury and Vikram Gupta. 2023. [Data-efficient methods for improving hate speech detection](#). In *Findings of the Association for Computational Linguistics: EACL 2023*, pages 125–132, Dubrovnik, Croatia. Association for Computational Linguistics.
- Maarten Sap, Saadia Gabriel, Lianhui Qin, Dan Jurafsky, Noah A. Smith, and Yejin Choi. 2020. [Social bias frames: Reasoning about social and power implications of language](#). In *Proceedings of the 58th Annual Meeting of the Association for Computational Linguistics*, pages 5477–5490, Online. Association for Computational Linguistics.



- Yonglong Tian, Chen Sun, Ben Poole, Dilip Krishnan, Cordelia Schmid, and Phillip Isola. 2020. [What makes for good views for contrastive learning](#). *CoRR*, abs/2005.10243.
- Bertie Vidgen, Tristan Thrush, Zeerak Waseem, and Douwe Kiela. 2021. [Learning from the worst: Dynamically generated datasets to improve online hate detection](#). In *Proceedings of the 59th Annual Meeting of the Association for Computational Linguistics and the 11th International Joint Conference on Natural Language Processing (Volume 1: Long Papers)*, pages 1667–1682, Online. Association for Computational Linguistics.
- Kunze Wang, Dong Lu, Caren Han, Siqu Long, and Josiah Poon. 2020. [Detect all abuse! toward universal abusive language detection models](#). In *Proceedings of the 28th International Conference on Computational Linguistics*, pages 6366–6376, Barcelona, Spain (Online). International Committee on Computational Linguistics.
- Zeerak Waseem, Thomas Davidson, Dana Warmusley, and Ingmar Weber. 2017. [Understanding abuse: A typology of abusive language detection subtasks](#). In *Proceedings of the First Workshop on Abusive Language Online*, pages 78–84, Vancouver, BC, Canada. Association for Computational Linguistics.
- Michael Wiegand, Josef Ruppenhofer, and Elisabeth Eder. 2021. [Implicitly abusive language – what does it actually look like and why are we not getting there?](#) In *Proceedings of the 2021 Conference of the North American Chapter of the Association for Computational Linguistics: Human Language Technologies*, pages 576–587, Online. Association for Computational Linguistics.
- Michael Wiegand, Josef Ruppenhofer, Anna Schmidt, and Clayton Greenberg. 2018. [Inducing a lexicon of abusive words – a feature-based approach](#). In *Proceedings of the 2018 Conference of the North American Chapter of the Association for Computational Linguistics: Human Language Technologies, Volume 1 (Long Papers)*, pages 1046–1056, New Orleans, Louisiana. Association for Computational Linguistics.
- Marcos Zampieri, Shervin Malmasi, Preslav Nakov, Sara Rosenthal, Noura Farra, and Ritesh Kumar. 2019. [SemEval-2019 task 6: Identifying and categorizing offensive language in social media \(OffensEval\)](#). In *Proceedings of the 13th International Workshop on Semantic Evaluation*, pages 75–86, Minneapolis, Minnesota, USA. Association for Computational Linguistics.

## A Datasets Statistics and Details

Table 4 displays statistics related to the datasets used in our study, including IHC, SBIC, DYNA, TOX, and ISHate. The table presents the percentage of implicit and explicit instances per dataset, along with their distribution across set partitions, and target groups distribution.

## B Evaluation results with BERT

In this section we show the evaluation of the BERT and Contrastive BERT models for RQ1 and RQ4 specified in sections 3.1 and 3.3.

Table 5a demonstrates BERT’s efficacy in cross-evaluation contexts, mirroring the results seen with HateBERT. Among the models, SBIC stands out, displaying superior generalization capabilities. Conversely, Table 5b illustrates that while models like SBIC, IHC, and TOX reap advantages from contrastive learning, others experience a slight dip in performance, though maintaining an overall high-quality output.

Moving on to Table 6, it’s evident that a segment of the enhancement is attributed to the precise categorization of challenging Non-HS messages prevalent across all five datasets. This precision underscores a more conservative and meticulous approach in classifying a message as Hateful.

Finally, Table 7 highlights BERT’s consistent performance, boasting high accuracy in handling Non-HS instances for each dataset. This is achieved without compromising the emphasis on discerning between Explicit and Implicit labels, thereby ensuring that the model maintains a balanced focus on varied content nuances.

## C TSNE embeddings for RQ1, RQ2, and RQ3 in all datasets

This section presents the TSNE results for each research questions RQ1, RQ2, and RQ3, illustrated in Figures 5, 6, 7, and 8. These visualizations are generated from the embeddings captured by HateBERT, specifically trained on the DYNA dataset and evaluated on all datasets.

Datasets	Source	Size	% Implicit	% Explicit	% Hate Class
IHC	Twitter	21480	86,7017	13,2983	38,1238
SBIC	Social Media	144649	58,9586	41,0414	38,9667
DYNA	Human-Machine Adv.	41144	58,0654	41,9346	53,8961
ISHate	Social Media	53073	71,5686	28,4314	66,3313
TOX	GPT-3	9866	42,381	57,619	48,956

Table 4: Comparing toxic language datasets. % Hate Class, % Implicit, and % Explicit are the percent labeled as hate, implicit hate, and explicit hate, respectively.

Train \ Test	IHC	SBIC	DYNA	ISHate	TOX
IHC	0,7625 ± 0,0063	0,6891 ± 0,0072	0,5511 ± 0,0077	0,6824 ± 0,0068	0,6074 ± 0,0329
SBIC	0,6603 ± 0,0301	0,8568 ± 0,0092	0,6500 ± 0,0310	0,7581 ± 0,0167	0,6939 ± 0,0086
DYNA	0,6660 ± 0,0046	0,7412 ± 0,0098	0,7831 ± 0,0027	0,7515 ± 0,0039	0,7501 ± 0,0036
ISHate	0,6214 ± 0,0040	0,7480 ± 0,0058	0,6279 ± 0,0056	0,8635 ± 0,0029	0,6012 ± 0,0090
TOX	0,5455 ± 0,0091	0,5855 ± 0,0312	0,5193 ± 0,0204	0,6140 ± 0,0275	0,7824 ± 0,0094

(a) Cross-evaluation results with BERT.

Train \ Test	IHC	SBIC	DYNA	ISHate	TOX
IHC	0.7418 ± 0.0066	0.6877 ± 0.0157	0.5463 ± 0.0183	0.6748 ± 0.0117	<b>0.6141 ± 0.0100</b>
SBIC	<b>0.6630 ± 0.0049</b>	<b>0.8602 ± 0.0034</b>	0.6390 ± 0.0056	0.7493 ± 0.0093	0.6574 ± 0.0145
DYNA	0.6431 ± 0.0074	0.6973 ± 0.0241	0.6979 ± 0.0080	0.7414 ± 0.0124	0.7001 ± 0.0145
ISHate	0.6202 ± 0.0156	0.6808 ± 0.0398	0.6233 ± 0.0078	0.8350 ± 0.0097	0.5797 ± 0.0206
TOX	<b>0.5501 ± 0.0396</b>	0.5741 ± 0.0410	0.5611 ± 0.0264	0.6086 ± 0.0349	0.7645 ± 0.0103

(b) Cross-evaluation results with Contrastive BERT. Bold values indicate improvements compared to Table 5a.

Table 5: BERT and Contrastive BERT cross-evaluation results with five different run seeds.

Test Case	BERT IHC	Contrastive IHC	BERT SBIC	Contrastive SBIC	BERT DynaHate	Contrastive DynaHate	BERT ISHate	Contrastive ISHate	BERT ToxiGen	Contrastive ToxiGen
counter_quote_nh	.297 ± .095	<b>.410 ± .070</b>	.282 ± .143	<b>.414 ± .095</b>	.843 ± .057	<b>.870 ± .082</b>	.319 ± .044	<b>.434 ± .050</b>	.097 ± .051	<b>.109 ± .121</b>
counter_ref_nh	.329 ± .055	<b>.467 ± .049</b>	.201 ± .093	<b>.264 ± .073</b>	.848 ± .033	<b>.908 ± .018</b>	.410 ± .033	<b>.555 ± .072</b>	.380 ± .152	.359 ± .193
ident_pos_nh	.340 ± .039	<b>.406 ± .088</b>	.233 ± .085	<b>.361 ± .165</b>	.846 ± .044	.808 ± .137	.317 ± .060	<b>.454 ± .046</b>	.556 ± .130	<b>.624 ± .194</b>
negate_neg_nh	.346 ± .054	<b>.427 ± .132</b>	.048 ± .031	<b>.128 ± .077</b>	.406 ± .055	<b>.502 ± .062</b>	.093 ± .022	<b>.194 ± .098</b>	.218 ± .146	<b>.262 ± .176</b>
profanity_nh	.810 ± .054	<b>.822 ± .052</b>	.946 ± .115	<b>1 ± 0</b>	1 ± 0	1 ± 0	1 ± 0	1 ± 0	.780 ± .203	.688 ± .168
slur_homonym_nh	.513 ± .045	.500 ± .120	.520 ± .090	.513 ± .112	.860 ± .037	<b>.875 ± .057</b>	.880 ± .038	<b>.953 ± .038</b>	.667 ± .100	.667 ± .113
slur_reclaimed_nh	.165 ± .060	<b>.215 ± .094</b>	.398 ± .113	<b>.481 ± .081</b>	.815 ± .045	.815 ± .035	.694 ± .064	<b>.790 ± .049</b>	.430 ± .050	.420 ± .156
target_group_nh	.684 ± .031	<b>.716 ± .049</b>	.732 ± .267	<b>.771 ± .070</b>	.987 ± .013	<b>.992 ± .016</b>	.416 ± .031	<b>.529 ± .080</b>	.048 ± .036	<b>.084 ± .119</b>
target_indiv_nh	.557 ± .063	.498 ± .135	.797 ± .351	<b>.938 ± .038</b>	1 ± 0	1 ± 0	.695 ± .028	<b>.818 ± .077</b>	.142 ± .127	.074 ± .073
target_obj_nh	.677 ± .067	<b>.711 ± .111</b>	.988 ± .028	.978 ± .018	1 ± 0	1 ± 0	.785 ± .031	<b>.855 ± .056</b>	.228 ± .182	.218 ± .175

Table 6: Comparative accuracy performance of BERT vs Contrastive BERT trained in each dataset and evaluated across various test cases on HateCheck.

Train	Explicit	Implicit	Non-HS
IHC	0.8754	0.8678	0.5206
SBIC	0.8920	0.8348	0.8607
DYNA	0.5796	0.6113	0.8068
ISHate	0.5542	0.4387	0.9067
TOX	0.6892	0.7727	0.4408

Table 7: Contrastive BERT avg accuracy across Explicit, Implicit, and Non-HS (SBIC test set).

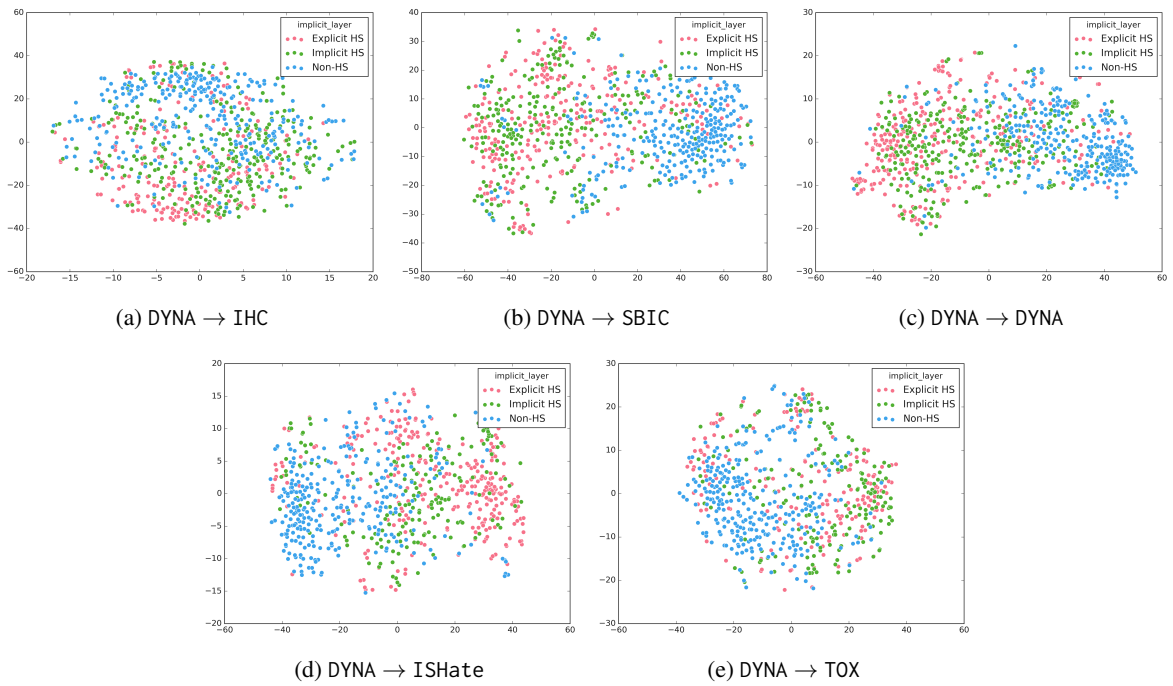


Figure 5: **RQ1**: TSNE embeddings of the test sets for all the datasets using HateBERT fine-tuned on DYNA.

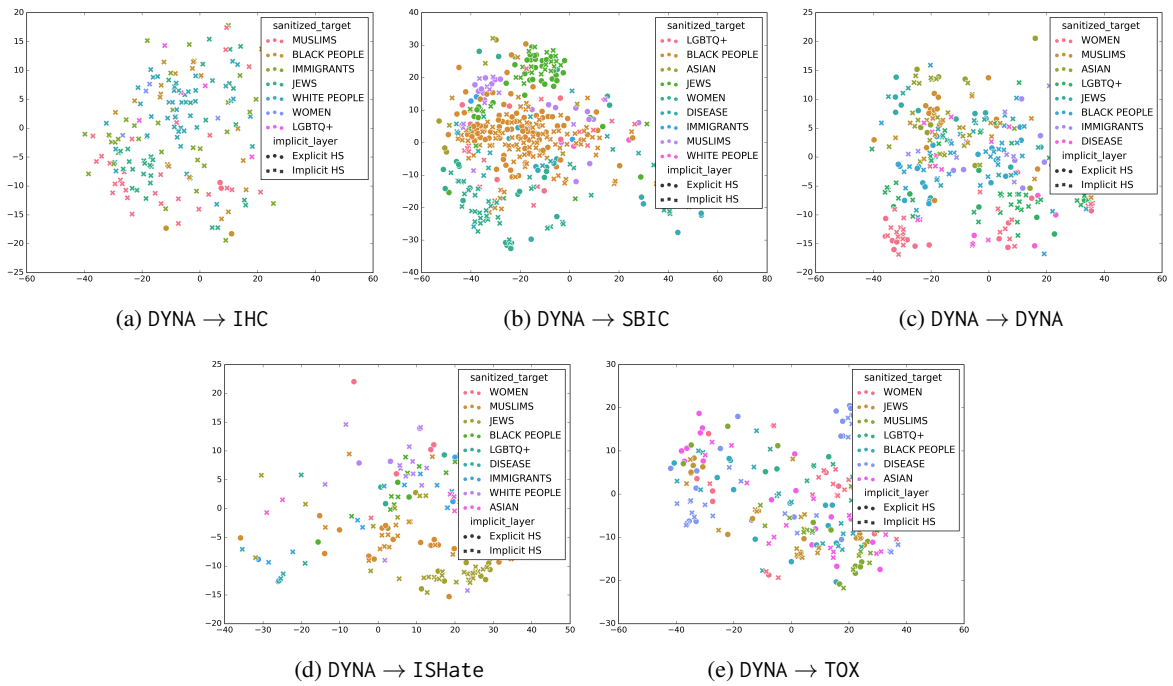


Figure 6: **RQ2**: TSNE embeddings of the test sets for all the datasets using HateBERT fine-tuned on DYNA based on their target groups. Non-hateful instances are excluded from these plots.

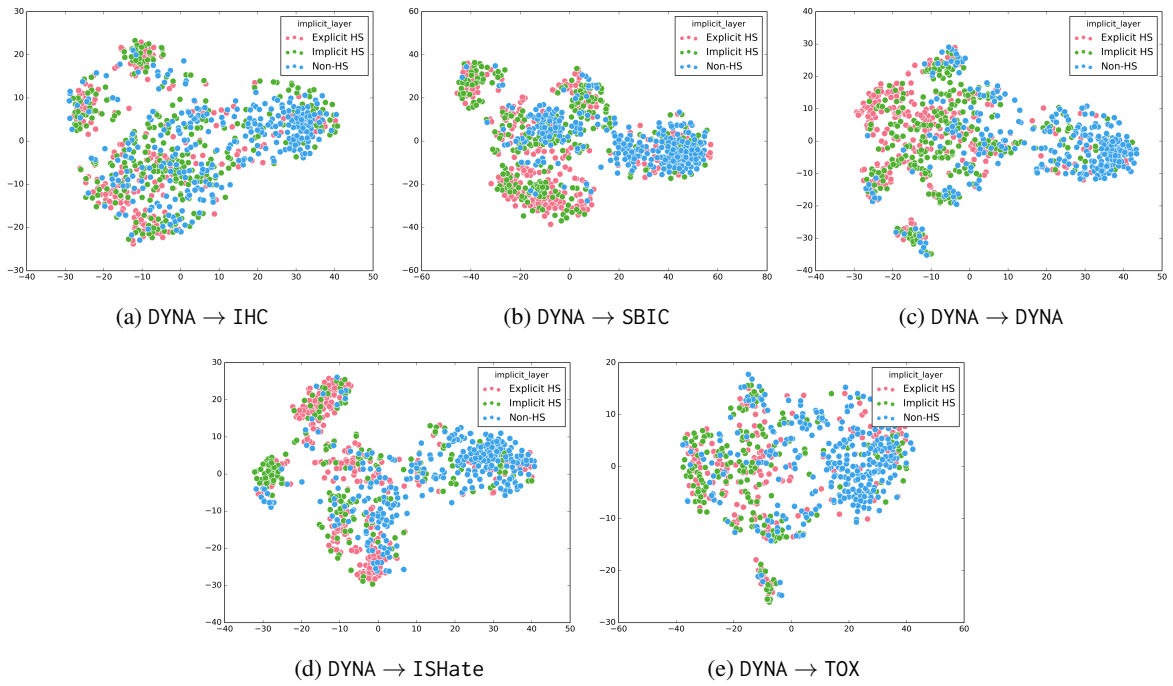


Figure 7: **RQ3**: TSNE embeddings of the test sets for all the datasets using HateBERT fine-tuned on DYNA and linking explicit and implicit instances

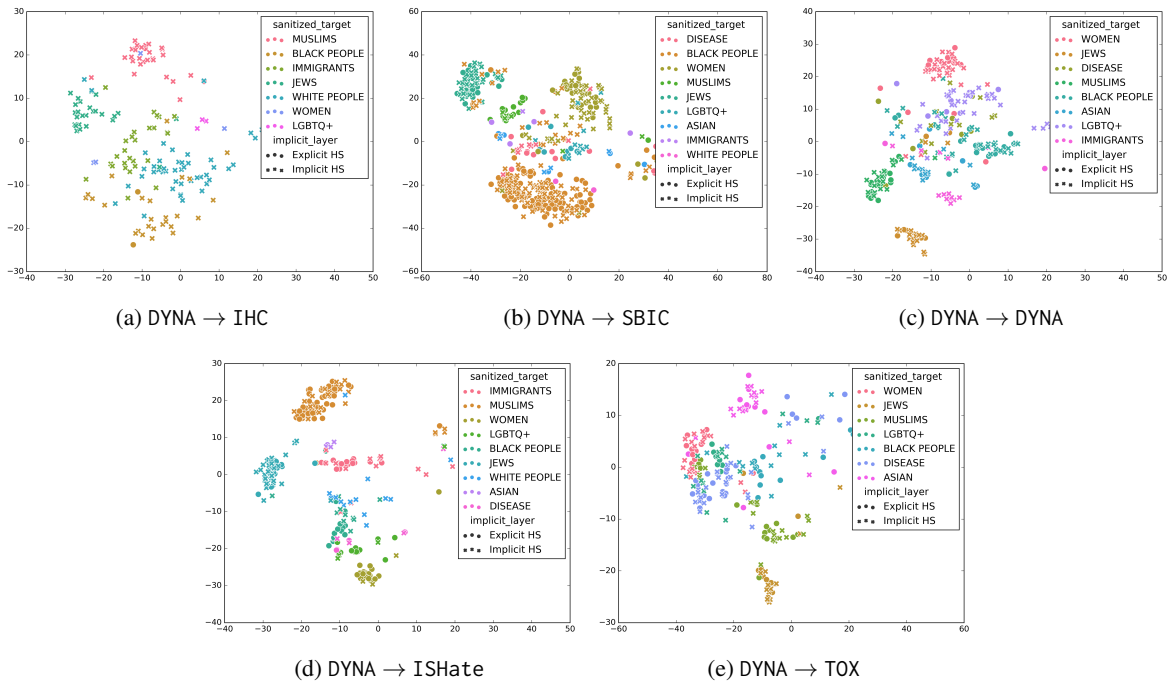


Figure 8: **RQ3**: TSNE embeddings of the test sets for all the datasets using HateBERT fine-tuned on DYNA based on their target groups. Non-hateful instances are excluded from these plots.