



**HAL**  
open science

## **Influence of FUT2/FUT3 polymorphism on human breastmilk oligosaccharide composition in the EDEN mother-child cohort**

Eric Venot, Sylvain Dechaumet, Blanche Guillon, Mikail Berdi, Sophie Cholet, Ghita Tajeddine, Manon Mutaner, Aline Meirhaeghe, Barbara Heude, Blandine De Lauzon-Guillain, et al.

### ► To cite this version:

Eric Venot, Sylvain Dechaumet, Blanche Guillon, Mikail Berdi, Sophie Cholet, et al.. Influence of FUT2/FUT3 polymorphism on human breastmilk oligosaccharide composition in the EDEN mother-child cohort. Journées scientifiques du Réseau Francophone de Métabolomique et Fluxomique, May 2023, Perpignan, France. hal-04351464

**HAL Id: hal-04351464**

**<https://hal.science/hal-04351464>**

Submitted on 18 Dec 2023

**HAL** is a multi-disciplinary open access archive for the deposit and dissemination of scientific research documents, whether they are published or not. The documents may come from teaching and research institutions in France or abroad, or from public or private research centers.

L'archive ouverte pluridisciplinaire **HAL**, est destinée au dépôt et à la diffusion de documents scientifiques de niveau recherche, publiés ou non, émanant des établissements d'enseignement et de recherche français ou étrangers, des laboratoires publics ou privés.

# Influence of FUT2/FUT3 polymorphism on human breastmilk oligosaccharide composition in the EDEN mother-child cohort.

Eric Venot<sup>1</sup>, Sylvain Dechaumet<sup>2</sup>, Blanche Guillon<sup>1</sup>, Mikail Berdi<sup>1</sup>, Sophie Cholet<sup>2</sup>, Ghita Tajeddine<sup>1</sup>, Manon Mutaner<sup>3</sup>, Aline Meirhaeghe<sup>3</sup>, Barbara Heude<sup>4</sup>, Blandine de Lauzon-Guillain<sup>4</sup>, Etienne Thevenot<sup>2</sup>, François Fenaille<sup>2</sup>, and Karine Adel-Patient<sup>1</sup>

## Context

**General goal :** Search for biomarkers associated with the prevention of infant food allergies



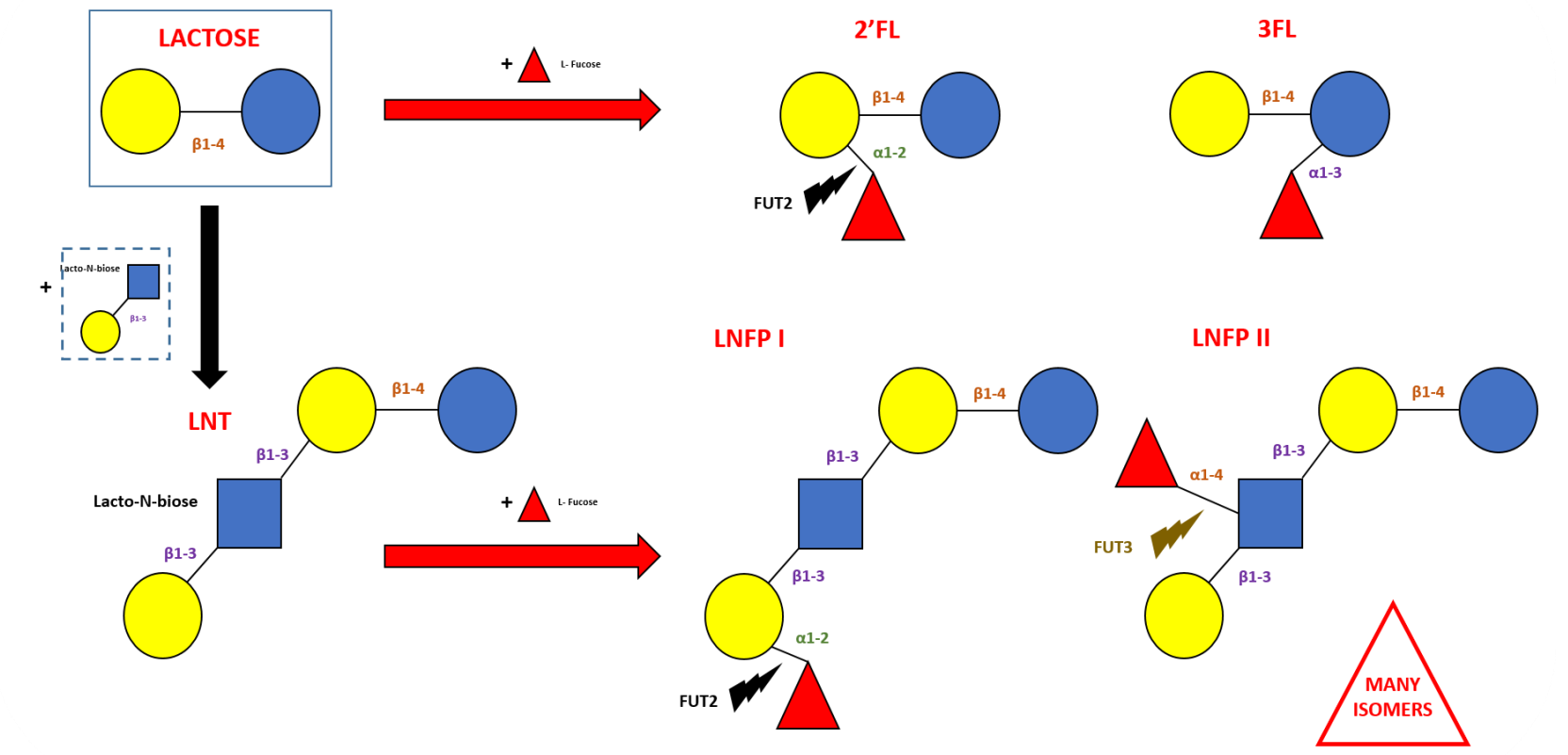
**Focus of this study :** Human Milk Oligosaccharide (HMO) composition of early breast milk

## Material & Methods

### HMO structures

HMOs are **complex glycans composed of 5 different monosaccharides** (D-galactose ●, D-glucose ●, L-Fucose ▲, N-Acetylglucosamine ■, Sialic Acid ◆) assembled from lactose core in highly **diverse structures of 3 to more than 20 sugar units**.

**Example of the synthesis of 5 HMOs (2'FL, 3FL, LNT, LNFP I & LNFP II) from Lactose core**



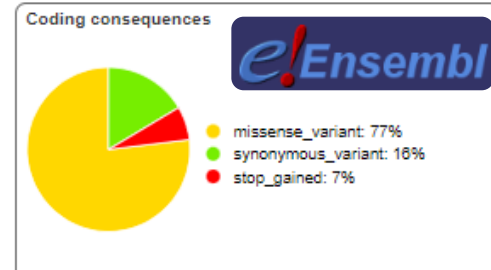
### EDEN Early Breast Milk samples



**317 samples of early breast milk** collected between 1 and 6 days after delivery in the **EDEN mother-child cohort** between 2003 and 2006.

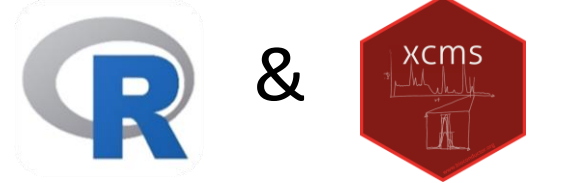
### Secretor/Lewis genotypes

- Maternal genetic predispositions** induce HMO synthesis differences (Lefebvre et al., 2020): **2 fucosyltransferase enzymes** production depends on mother **FUT2 (Secretor)** and **FUT3 (Lewis)** genes : - active **FUT2 (Secretor + )** ⇔ **2'FL & LNFP I** synthesis - active **FUT3 (Lewis + )** ⇔ **LNFP II** synthesis
- 220 out of the 317 EDEN cohort mothers were genotyped** : **62 SNPs** associated to **FUT2** and **FUT3** genes were extracted. After SNP quality filters, selection of non homozygous SNPs for all EDEN mothers and selection of representative SNPs in complete Linkage Disequilibrium with others, **17 SNPs** were kept.
- Ensembl Variant Effect Predictor** tool was also applied on the 62 SNPs.



### LC-HRMS analysis & HMO workflow

- The samples were analyzed by **Liquid Chromatography coupled to High Resolution Mass Spectrometry (Q-TOF™, res: 40000, PGC Hypercarb column)**
- HMO references:**
  - **19 commercial standards** analyzed
  - **m/z ratios of 8 953 HMO computed in silico** based on all possible monosaccharide combinations.
- specific in house HMO workflow** from mzML files developed with R & XCMS to detect m/z ratios corresponding to potential HMOs
  - ➔ **130 HMOs detected** after selection criteria including **18 HMOs annotated** based on commercial standard (including **2'FL, LNFP I & LNFP II**)



## Statistical analysis

- The **significance of the difference in intensity between genotype groups** was assessed by **univariate hypothesis testing with multiple testing correction FDR** (Benjamini et al., 1995), (phenomis R package (Thévenot et al., 2023)), with : - **Student t test** when minor allele-minor allele genotype was compared to the 2 others gathered. - **Analysis of variance** when the 3 different genotypes were considered.
- Hierarchical cluster analysis (HCA)** (ComplexHeatmap R package (Gu et al., 2016)) was performed on all samples and all (annotated and potential) HMOs.

## Results

### FUT2/FUT3 effects on HMO intensities

- HMO composition highly depending of FUT2 and FUT3 polymorphisms :**
  - FUT2** has an **impact on 78%** of the 130 detected HMOs (p-values limit : 0.001)
  - FUT3** effect is also important but weaker than FUT2 ones (**27%** of the HMOs impacted with 0.05 p-value limit)

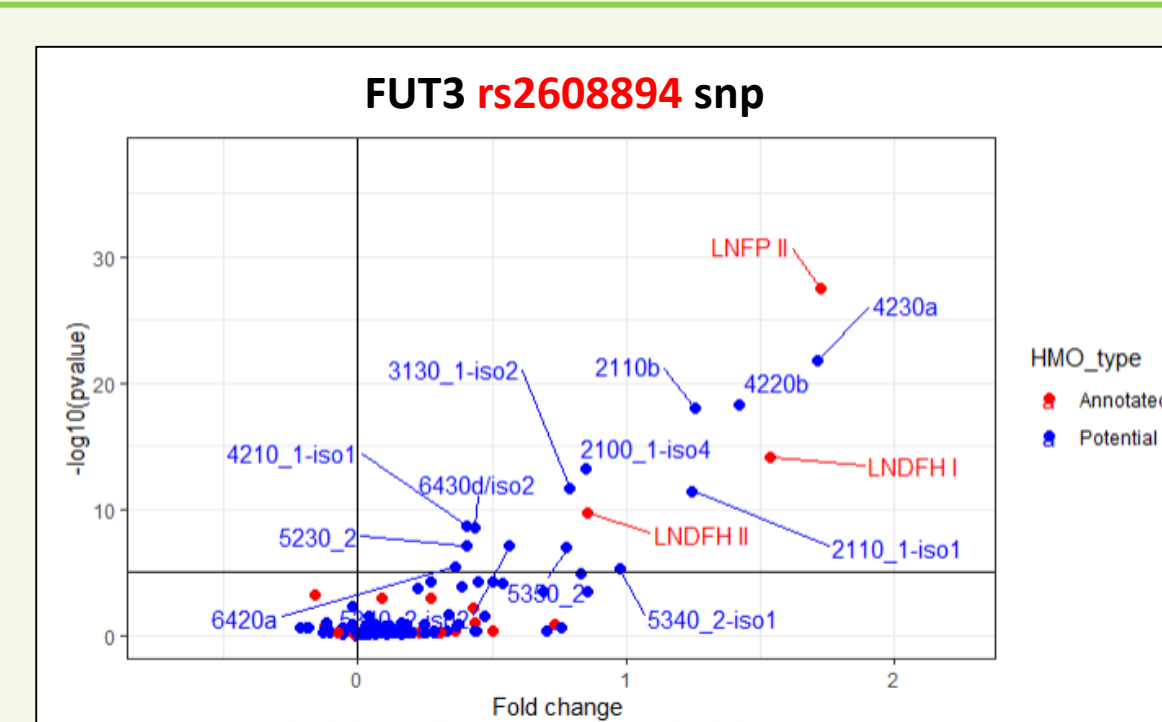
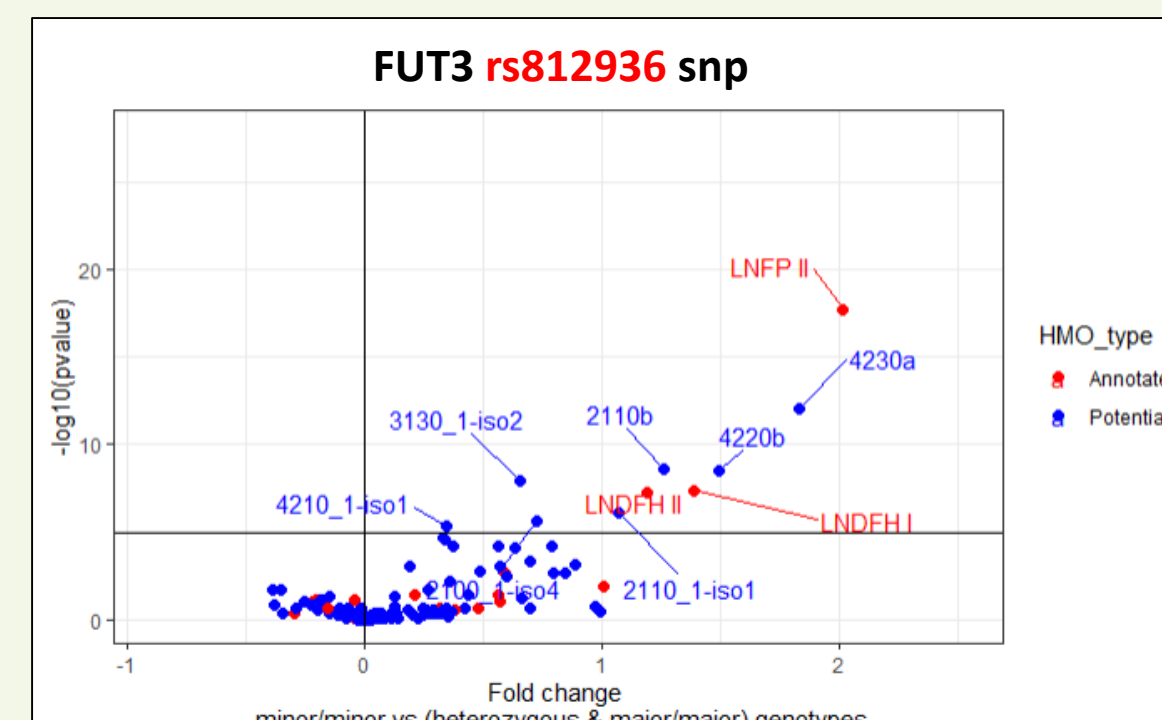
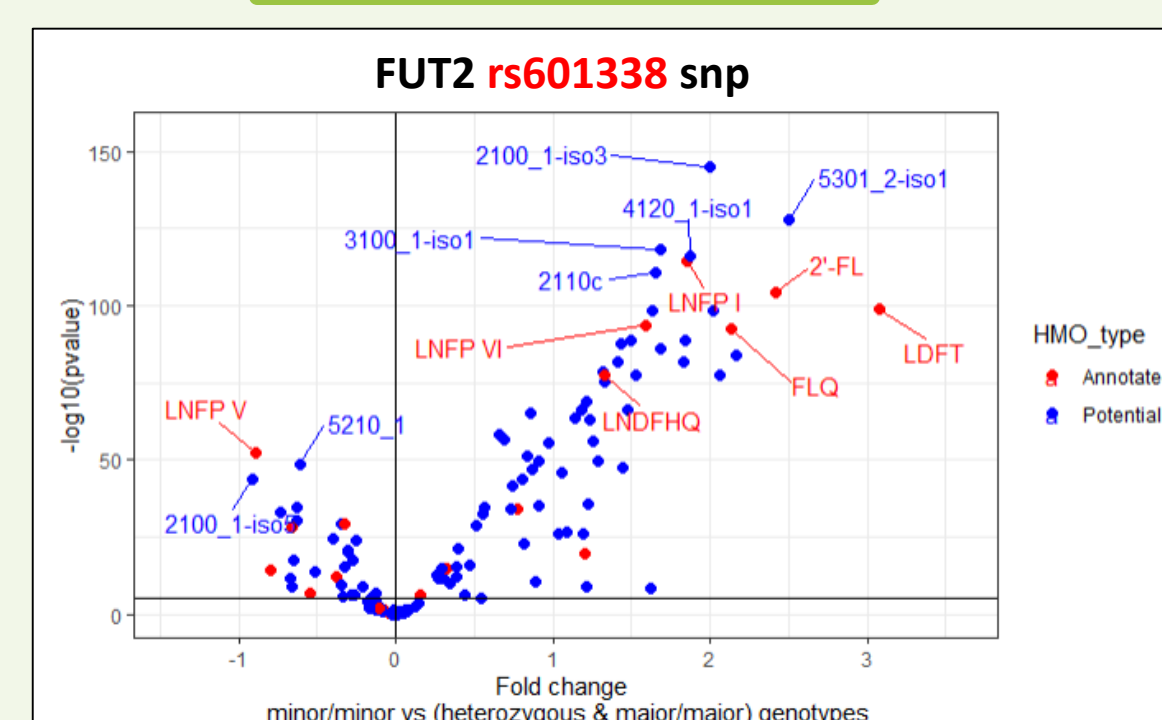
gene	snp	Ensembl Variant Effect Predictor type	Genotype distribution in 220 EDEN mothers			Considering the 3 genotypes separated			Considering the minor/minor genotype versus 2 other genotypes							
			minor/minor	minor/major	major/major	number of HMOs	median	pvalues	max	number of HMOs	median	pvalues	max	log10 difference	min	max
FUT2	rs601338*	stop_gained	46	114	60	101	1.23e-34	1.91e-145	7.06e-05	98	2.27e-26	1.76E-54	7.04e-05	0.78	-1	3.06
FUT3	rs812936*	missense variant	130	82	8	35	7.86e-04	1.95e-18	4.81e-02	24	6.60e-03	3.20e-10	4.39e-02	0.59	-0.44	2.2
FUT3	rs778986	missense variant	134	79	7	35	5.75e-04	2.07e-18	4.20e-02	24	6.60e-03	3.20e-10	4.39e-02	0.62	-0.44	2.2
FUT3	rs2608894	regulatory region variant - promoter	108	96	16	33	1.46e-05	2.71e-28	3.22e-02	29	1.51e-04	4.54e-12	4.82e-02	0.51	-0.2	1.88

- 2 SNPs** (\* in the table) mentioned in Lefebvre et al. paper (2020) **confirmed** in this study.
- 2 new SNPs with high impact detected** in this study (rs778986 & rs2608894)

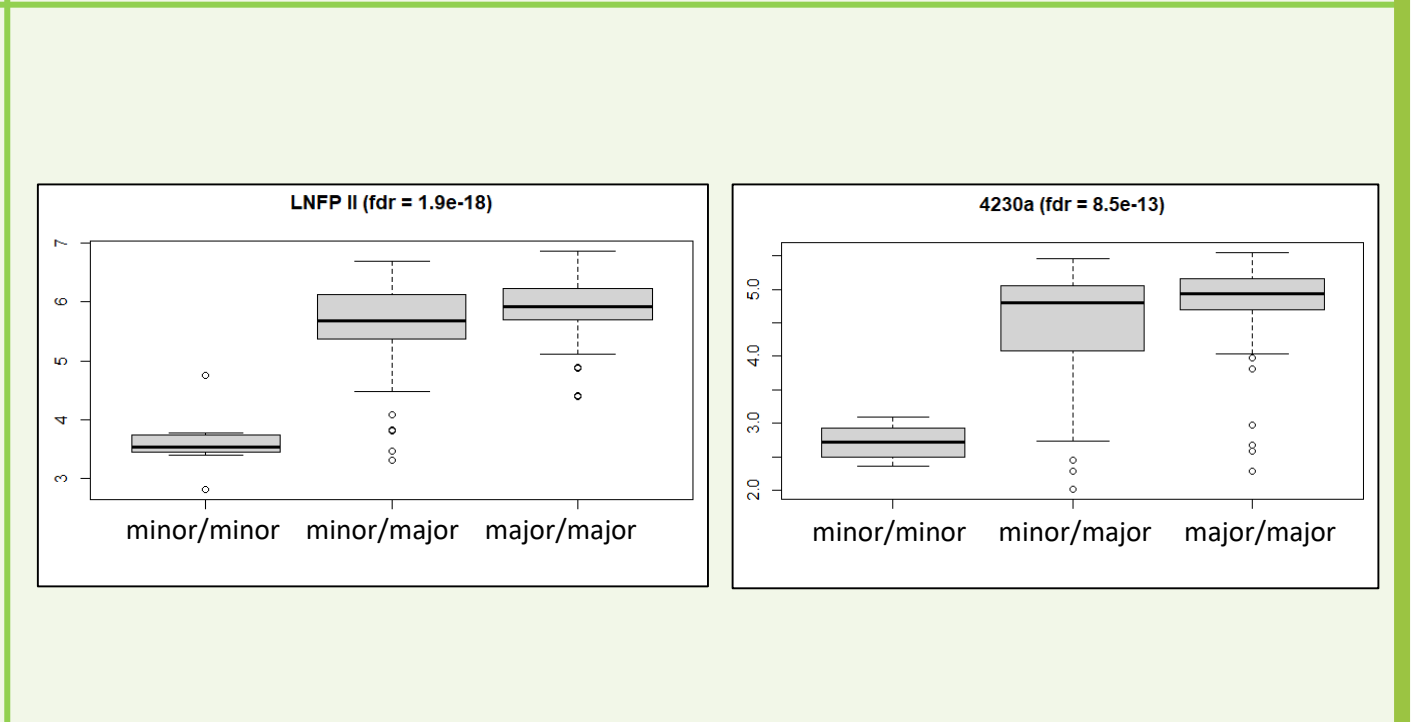
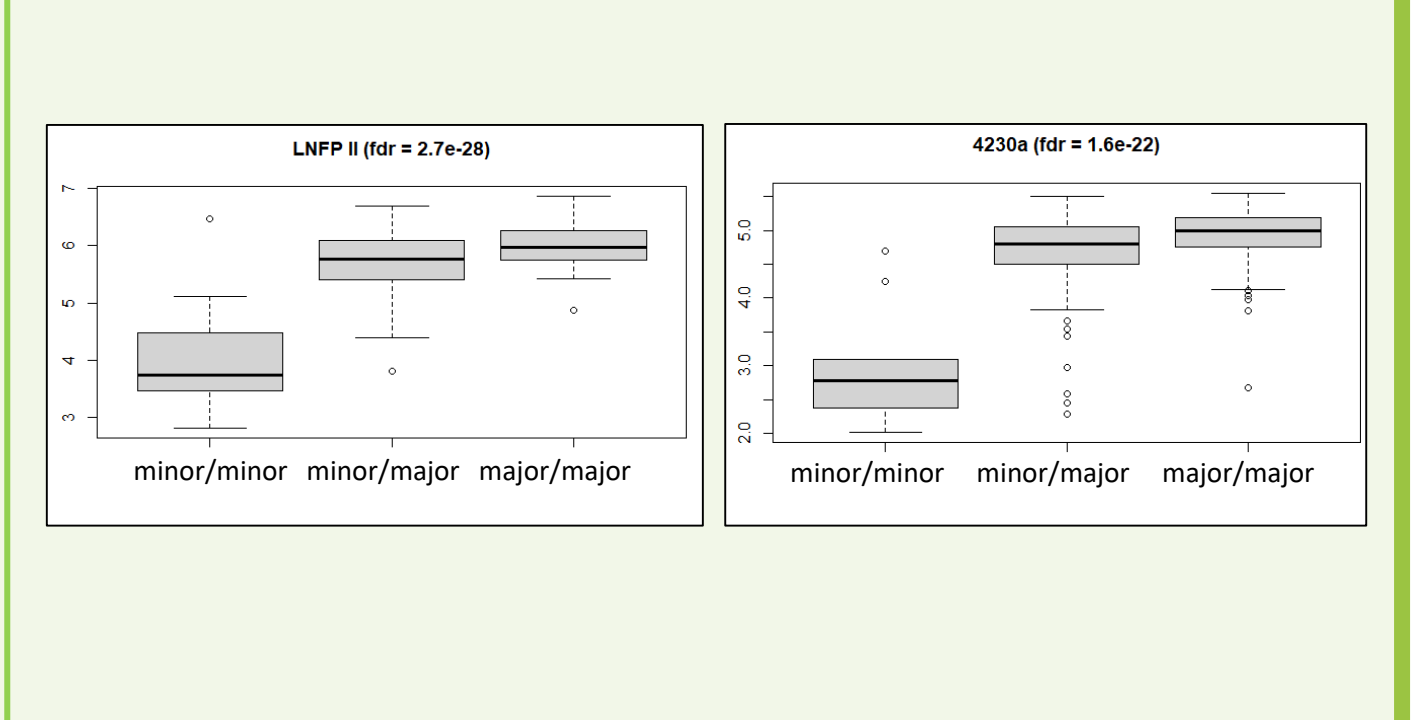
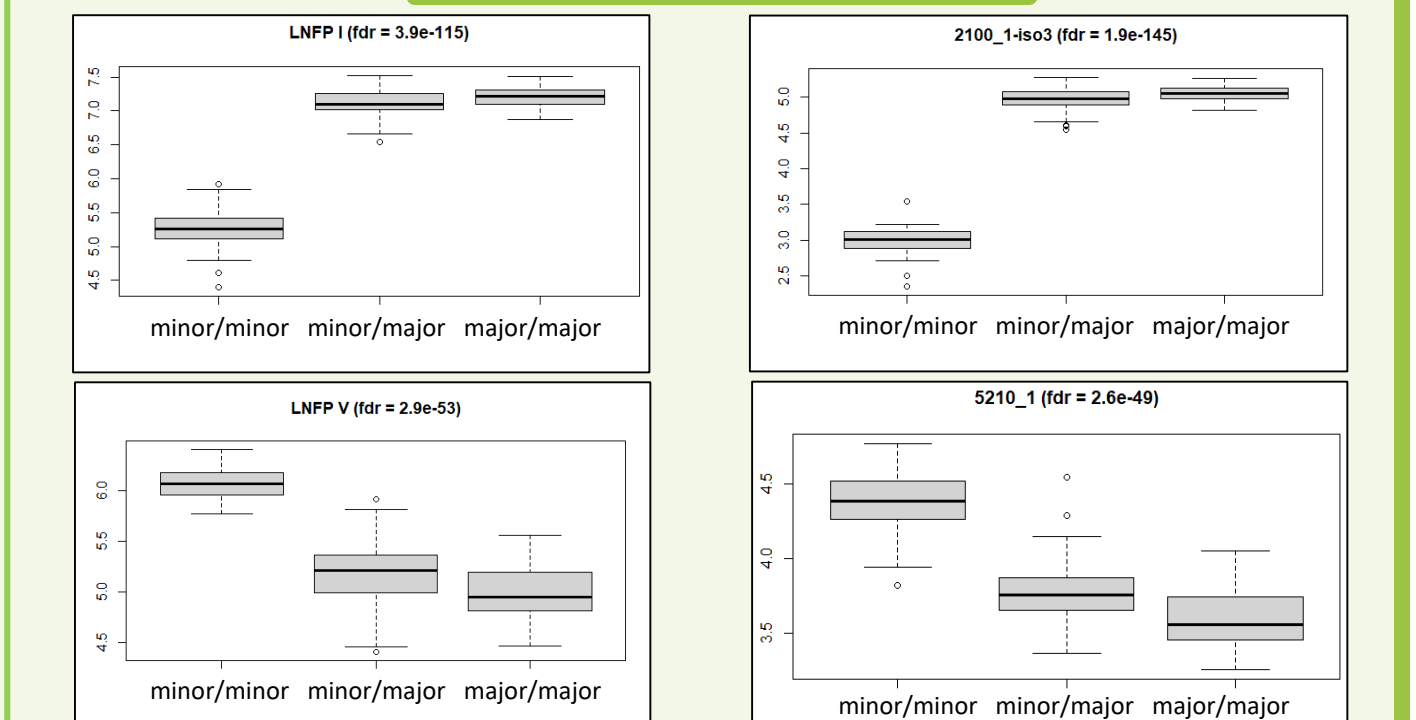
### New impacted HMOs identified

- Association between FUT2/FUT3 polymorphisms and several HMOs (2'FL, LNFP I, LNFP II...)** already described in the literature (Lefebvre et al., 2020) **found back in this study**.
- But **new potential HMOs with higher or similar association levels with FUT2/FUT3 polymorphisms were also identified**.

#### VolcanoPlots



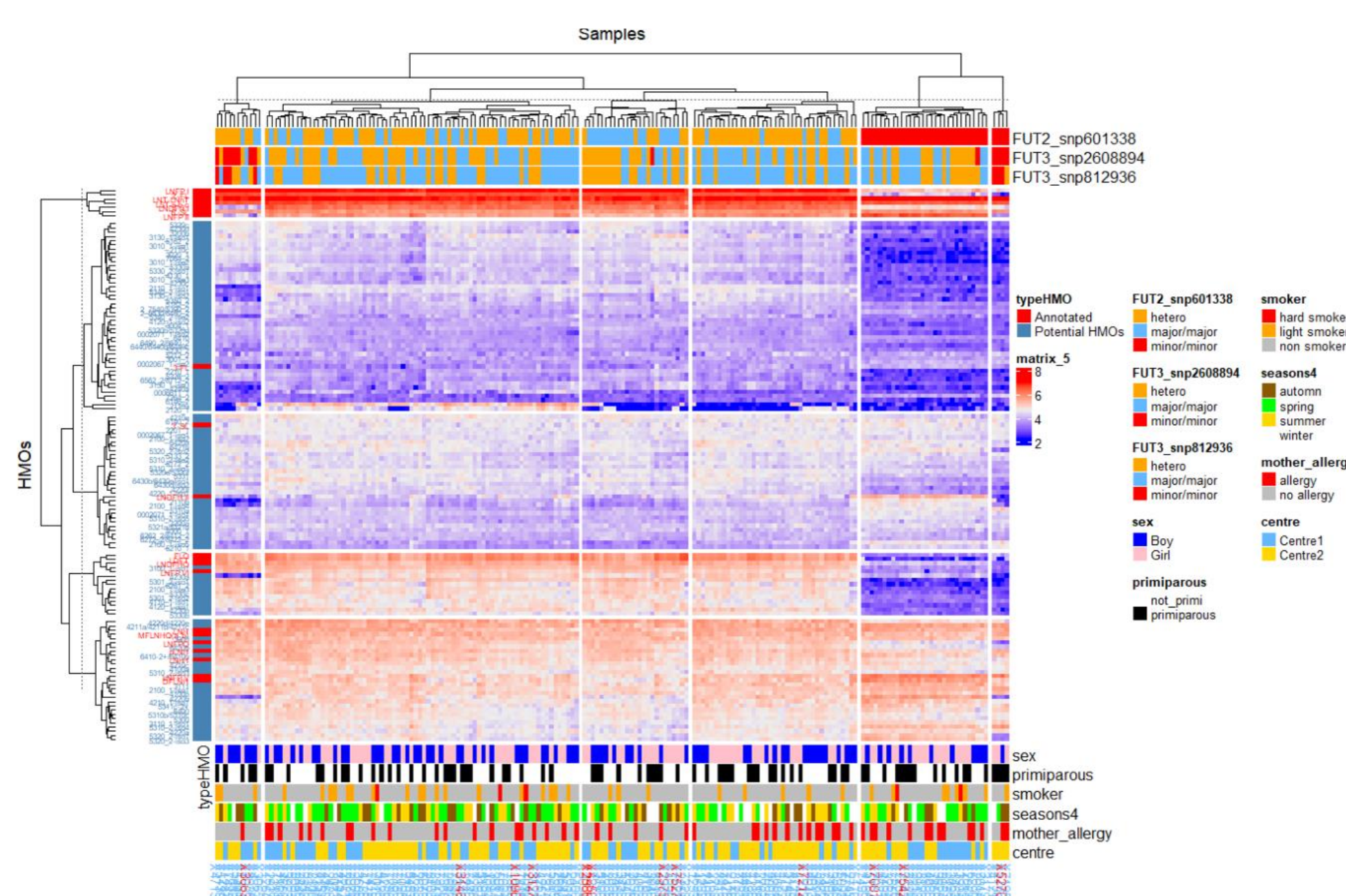
#### ANOVA results



### HCA results & different HMOs patterns identified

- specific HMO composition associated to FUT2/FUT3 polymorphisms**

- other patterns identified to be deeper characterized**



## Conclusion

- High impact of FUT2 & FUT3 polymorphisms on HMOs composition
- Results for 2 Lefebvre et al. SNPs confirmed and larger list of impacted HMOs identified
- Different clusters of HMOs identified

## What's next?

- Deeper insight into different HMOs clusters (HMOs mother profiling?)
- Assessment of **influence of environmental factors** on milk HMO composition & association between **HMO composition and health outcomes in childhood**

## References

- Lefebvre et al., 2020. Time of lactation and maternal Fucosyltransferase genetic polymorphisms determine the variability of Human milk oligosaccharides. *Frontiers in Nutrition*.
- Smith et al., 2006. XCMS: Processing mass spectrometry data for metabolite profiling using nonlinear peak alignment, matching and identification. *Analytical chemistry*.
- Benjamini et al., 1995. Controlling the False Discovery Rate: A Practical and Powerful Approach to Multiple Testing. *Journal of the Royal Statistical Society*.
- Thevenot et al., 2023. phenomis: Postprocessing and univariate analysis of omics data. *Scientific data*.
- Gu et al., 2016. Complex heatmaps reveal patterns and correlations in multidimensional genomic data. *Bioinformatics*.