

Intensity, cps

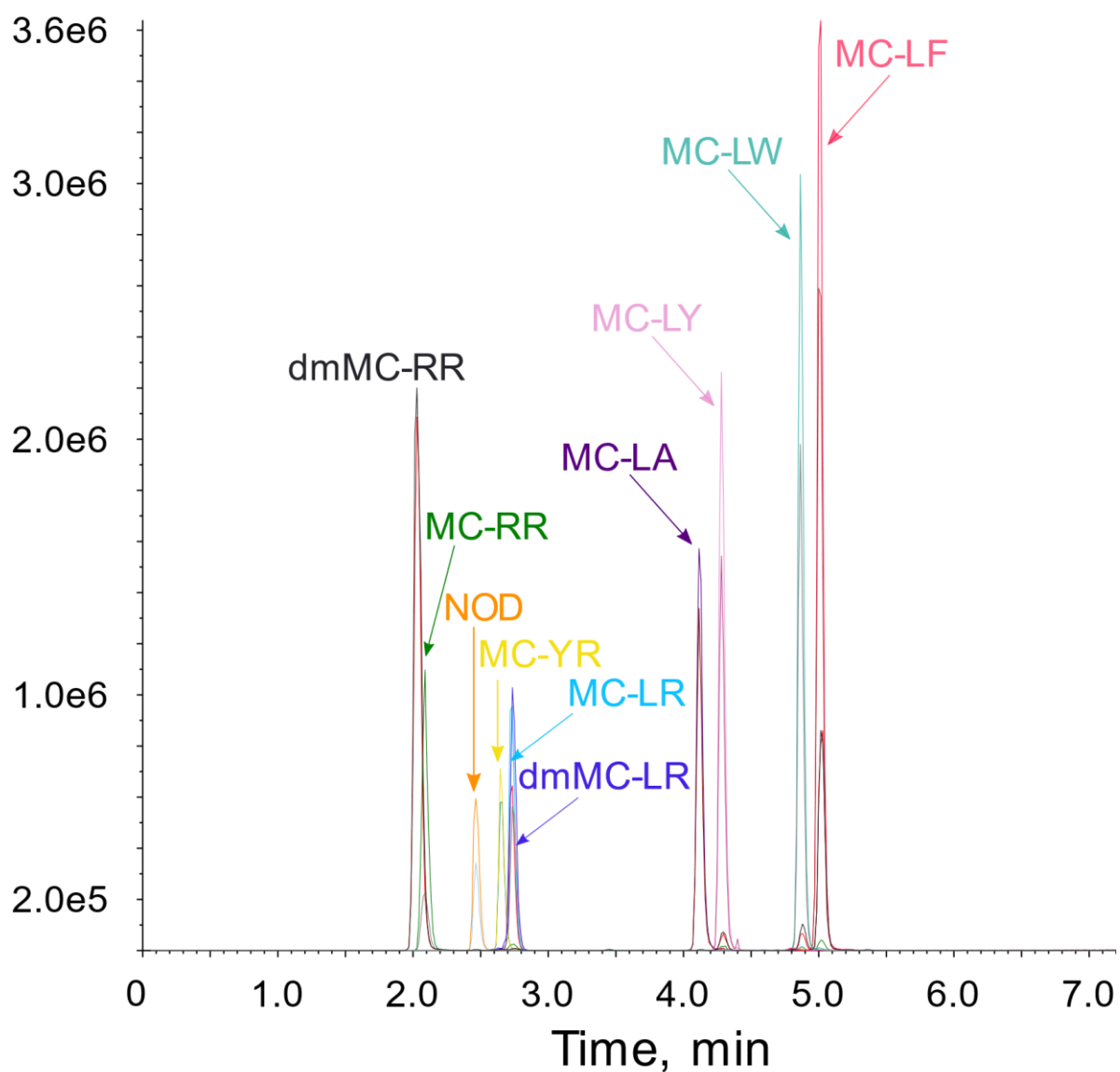


Figure S1: Chromatogram of the mix of the 10 toxins (9 MCs and NOD) using the multiple reaction monitoring transitions presented in Table 1.

Table S1: Limits of detection and quantification for intra- and extracellular matrices

Analytes	Intracellular		Extracellular			
	LD (pg on column)	LQ (pg on column)	LD (pg on column)	LQ (pg on column)	MDL* (ng/mL)	MQL* (ng/mL)
dmMC-RR	1.0	5.5	0.59	1.8	0.05	0.14
MC-RR	3.0	7.0	1.0	1.8	0.08	0.15
MC-YR	21	60	11	34	0.81	2.4
MC-LR	22	124	8.0	24	0.54	1.6
dmMC-LR	3.0	11	1.7	5.2	0.11	0.33
MC-LA	7.0	22	0.79	2.4	0.04	0.13
MC-LY	4.0	10	0.69	2.1	0.04	0.13
MC-LW	3.0	35	0.91	2.7	0.06	0.18
MC-LF	10	23	0.74	2.2	0.05	0.15
NOD	3.5	25	1.4	4.1	0.08	0.23

LD=Limit of detection; LQ=Limit of quantification; MDL=Method detection limit, MQL= Method quantification limit; *application of the corrective factors defined in Table 2.

Table S2: Accuracy obtained after applying the corrective factor for intracellular and extracellular matrices for each spiking level (mean \pm SD, n=3). Low, Medium and High spiking levels corresponded to 4, 18 and 80 LQs for the intracellular matrix and 4, 22 and 125 LQs for the extracellular matrix.

Variant	Spiking Level	Intracellular	Extracellular
		Accuracy \pm SD (%)	Accuracy \pm SD (%)
dmMC-RR	Low	97 \pm 4.9	91 \pm 29
	Medium	100 \pm 3.8	81 \pm 5.0
	High	100 \pm 3.5	99 \pm 9.3
MC-RR	Low	98 \pm 4.1	81 \pm 9.8
	Medium	100 \pm 5.0	84 \pm 5.5
	High	100 \pm 2.7	99 \pm 9.2
MC-YR	Low	116 \pm 4.7	134 \pm 6.4
	Medium	77 \pm 2.4	109 \pm 3.0
	High	99 \pm 3.8	105 \pm 2.6
MC-LR	Low	89 \pm 4.6	139 \pm 13
	Medium	73 \pm 3.1	112 \pm 4.2
	High	98 \pm 3.3	105 \pm 3.4
dmMC-LR	Low	117 \pm 8.1	97 \pm 14
	Medium	83 \pm 3.5	94 \pm 2.9
	High	99 \pm 4.9	101 \pm 4.9
MC-LA	Low	102 \pm 7.4	96 \pm 31
	Medium	96 \pm 4.2	92 \pm 6.7
	High	100 \pm 2.1	99 \pm 3.6
MC-LY	Low	106 \pm 10	105 \pm 26
	Medium	100 \pm 4.1	92 \pm 4.3
	High	100 \pm 4.3	100 \pm 3.6
MC-LW	Low	99 \pm 6.0	109 \pm 55
	Medium	98 \pm 2.4	83 \pm 9.5
	High	100 \pm 3.1	99 \pm 2.9
MC-LF	Low	99 \pm 6.9	112 \pm 44
	Medium	96 \pm 2.7	108 \pm 5.9
	High	100 \pm 2.9	103 \pm 5.5
NOD	Low	96 \pm 4.3	101 \pm 8.1
	Medium	95 \pm 3.6	94 \pm 6.6
	High	99 \pm 3.9	100 \pm 4.0

Table S3: Intra- and inter-day variabilities expressed as relative standard deviation (RSD) at low (intracellular: 4 LQs; extracellular: 4 LQs), medium (intracellular: 18 LQs; extracellular: 22LQs) and high (intracellular: 80 LQs; extracellular: 125 LQs) spiking levels (intra-day, n = 3; inter-day, n = 9).

Variant	Spiking Level	Intracellular		Extracellular	
		Intra-day (%)	Inter-day (%)	Intra-day (%)	Inter-day (%)
dmMC-RR	Low	3.0	5.0	3.3	32
	Medium	2.8	3.8	5.1	6.2
	High	2.0	3.5	11	9.4
MC-RR	Low	1.6	4.2	16	12
	Medium	4.4	5.0	3.5	6.6
	High	0.4	2.7	9.4	9.3
MC-YR	Low	4.5	4.1	8.4	5.4
	Medium	0.3	3.1	2.2	2.8
	High	1.1	3.8	1.7	2.5
MC-LR	Low	5.4	5.1	1.8	6.4
	Medium	3.6	4.2	2.0	3.8
	High	1.0	3.4	3.4	3.3
dmMC-LR	Low	2.4	6.9	4.6	7.8
	Medium	3.0	4.3	2.4	3.1
	High	0.5	5.0	7.5	4.8
MC-LA	Low	4.3	7.2	17	33
	Medium	1.4	4.4	8.3	7.3
	High	1.7	2.1	2.8	3.7
MC-LY	Low	3.0	10	2.7	25
	Medium	2.7	4.1	4.7	4.6
	High	3.5	4.3	4.2	3.6
MC-LW	Low	7.5	6.1	6.9	51
	Medium	0.9	2.5	2.8	11
	High	2.0	3.1	0.7	3.0
MC-LF	Low	2.6	6.9	3.6	17
	Medium	1.6	2.9	3.3	5.4
	High	0.9	2.9	4.1	5.4
NOD	Low	4.0	4.4	6.0	8.1
	Medium	0.5	3.8	1.1	6.9
	High	1.6	4.0	3.7	3.7