



**HAL**  
open science

## Prospective Multicenter Validation of a Simple Blood Test for the Diagnosis of Glut1 Deficiency Syndrome

Fanny Mochel, Domitille Gras, Marie-Pierre Luton, Manon Nizou, Donatella Giovannini, Caroline Delattre, Mélodie Aubart, Magalie Barth, Anne de Saint-Martin, Diane Doummar, et al.

### ► To cite this version:

Fanny Mochel, Domitille Gras, Marie-Pierre Luton, Manon Nizou, Donatella Giovannini, et al.. Prospective Multicenter Validation of a Simple Blood Test for the Diagnosis of Glut1 Deficiency Syndrome. *Neurology*, 2023, 100 (23), pp.e2360-e2373. 10.1212/WNL.0000000000207296 . hal-04347222

**HAL Id: hal-04347222**

**<https://hal.science/hal-04347222v1>**

Submitted on 15 Dec 2023

**HAL** is a multi-disciplinary open access archive for the deposit and dissemination of scientific research documents, whether they are published or not. The documents may come from teaching and research institutions in France or abroad, or from public or private research centers.

L'archive ouverte pluridisciplinaire **HAL**, est destinée au dépôt et à la diffusion de documents scientifiques de niveau recherche, publiés ou non, émanant des établissements d'enseignement et de recherche français ou étrangers, des laboratoires publics ou privés.



Distributed under a Creative Commons Attribution - NonCommercial - NoDerivatives 4.0 International License

# Prospective Multicenter Validation of a Simple Blood Test for the Diagnosis of Glut1 Deficiency Syndrome

Fanny Mochel, MD, PhD, Domitille Gras, MD, Marie-Pierre Luton,\* Manon Nizou,\* Donatella Giovannini,\* Caroline Delattre, Mélodie Aubart, MD, PhD, Magalie Barth, MD, Anne De Saint-Martin, MD, Diane Doummar, MD, Nouha Essid, MD, Alexa Garros, MD, Caroline Hachon Le Camus, MD, Célia Hoebeke, MD, Sylvie Nguyen The Tich, MD, PhD, Maximilien Perivier, MD, Serge Rivera, MD, Anne Rolland, MD, Agathe Roubertie, MD, PhD, Catherine Sarret, MD, PhD, Caroline Sevin, MD, Dorothee Ville, MD, Marc Sitbon, PhD, Jean-Marc Costa, PharmD, Roser Pons, MD, PhD, Angels Garcia-Cazorla, MD, PhD, Sandrine Vuillaumier, PhD, Vincent Petit, PhD, Odile Boespflug-Tanguy, MD, PhD, and Darryl C. De Vivo, MD, for the MetaGlut1 Study Group

## Correspondence

Prof. Mochel  
fanny.mochel@upmc.fr

*Neurology*® 2023;100:e2360-e2373. doi:10.1212/WNL.0000000000207296

## Abstract

### Background and Objective

GLUT1 deficiency syndrome (Glut1DS) is a treatable neurometabolic disease that causes a wide range of neurologic symptoms in children and adults. However, its diagnosis relies on an invasive test, that is, a lumbar puncture (LP) to measure glycorrachia, and sometimes complex molecular analyses of the *SLC2A1* gene. This procedure limits the number of patients able to receive the standard of care. We wished to validate the diagnostic performance of METAgut1, a simple blood test that quantifies GLUT1 on the erythrocyte surface.

### Methods

We performed a multicenter validation study in France, involving 33 centers. We studied 2 patient cohorts: a prospective cohort consisting of patients with a clinical suspicion of Glut1DS explored through the reference strategy, that is, LP and analyses of the *SLC2A1* gene, and a retrospective cohort that included patients previously diagnosed with Glut1DS. All patients were blind-tested with METAgut1.

### Results

We analyzed 428 patients in the prospective cohort, including 15 patients newly diagnosed with Glut1DS, and 67 patients in the retrospective cohort. METAgut1 was 80% sensitive and >99% specific for the diagnosis of Glut1DS. Concordance analyses showed a substantial agreement between METAgut1 and glycorrachia. In the prospective cohort, the positive predictive value of METAgut1 was slightly higher than that of glycorrachia. METAgut1 succeeded to identify patients with Glut1DS with *SCL2A1* mosaicism and variants of unknown significance.

## MORE ONLINE

### Class of Evidence

Criteria for rating therapeutic and diagnostic studies

[NPub.org/coe](https://www.ncbi.nlm.nih.gov/pmc/articles/PMC1081111/)

\*These authors contributed equally in supervision of data management.

From the Hôpital La Pitié-Salpêtrière (F.M., M-P.L., C.D.), Assistance-Publique Hôpitaux de Paris, Inserm U1127; Sorbonne University (D.Gras), Inserm U1127, CNRS UMR7225, Paris Brain Institute; U1141 Neurodiderot (D.Gras), équipe 5 InDev, Inserm, CEA, UP UNIACT, Neurospin, Joliot, DRF, CEA-Saclay; Metafora Biosystems (M.N., V.P.); Institut de Génétique Moléculaire de Montpellier (D.Giovannini), Univ. Montpellier, CNRS; Service de Neurologie Pédiatrique (M.A.), Hôpital Necker-Enfants Malades, Assistance-Publique Hôpitaux de Paris; Service de Génétique (M.B.), Centre Hospitalier Universitaire Angers; Service de Neuropédiatrie (A.D.S-M.), Hôpital de Haute-pierre, Strasbourg; Sorbonne Université (D.D.), Service de Neuropédiatrie-Pathologie du développement, Hôpital Trousseau AP-HP.SU, FHU I2D2, Paris; Service de Neurologie et Réanimation Pédiatrique (N.E.), APHP, Hôpital Raymond Poincaré, Garches; Service de Neurologie Pédiatrique (A.G.), Hôpital Nord, Grenoble; Service de Neurologie Pédiatrique (C.H.L.C.), et Unité de recherche clinique, module plurithématique sous axe pédiatrique CI 1436, Hôpital des enfants, CHU Toulouse; Service de Neurologie Pédiatrique (C.H.), Hôpital La Timone, Assistance-Publique Hôpitaux de Marseille; Service de Neuropédiatrie (S.N.T.T.), CRMR Epilepsies Rares, Hôpital Roger Salengro, Lille; Service de Neuropédiatrie et handicaps (M.P.), Hôpital pédiatrique Gatien de Clocheville, CHU de Tours; Pole Mère Enfant (S.R.), Centre Hospitalier de la Côte Basque, Bayonne; Service de Neuropédiatrie (A.R.), Hôpital Mère-Enfant, Nantes; Département de Neuropédiatrie, Centre d'Investigation Clinique Inserm (A.R.), INM, Univ Montpellier, INSERM U 1298, CHU Montpellier, CIC1411; Service de Pédiatrie (C.Sarret), Hôpital Estaing, CHU Clermont-Ferrand; Service de Neurologie Pédiatrique (C.Sevin), Hôpital Bicêtre, Assistance-Publique Hôpitaux de Paris; Service de Neurologie Pédiatrique (D.V.), Hôpital Femme Mère Enfant, Centre Hospitalier de Lyon; Institut de Génétique Moléculaire de Montpellier (M.S.), Univ. Montpellier, CNRS; Laboratoire Cerba (J-M.C.), Saint-Ouen l'Aumône, France; Department of Pediatrics (R.P.), Aghia Sofia Hospital, University of Athens, Greece; Department of Neurology (A.G-C.), Hospital Sant Joan de Déu, Barcelona, Spain; Service de Biochimie et Génétique (S.V.), Hôpital Bichat Claude Bernard, APHP, Paris; CRMR LeukoFrance Service de neuropédiatrie (O.B-T.), Hôpital Robert Debré, AP-HP, Paris; UMR1141, Neurodiderot Université de Paris, France; Department of Pediatrics (D.C.D.V.), Columbia University Irving Medical Center, New York.

Go to [Neurology.org/N](https://www.neurology.org/N) for full disclosures. Funding information and disclosures deemed relevant by the authors, if any, are provided at the end of the article.

The Article Processing Charge was funded by Metafora Biosystems.

Coinvestigators are listed at [links.lww.com/WNL/C767](https://links.lww.com/WNL/C767).

This is an open access article distributed under the terms of the Creative Commons Attribution-NonCommercial-NoDerivatives License 4.0 (CC BY-NC-ND), which permits downloading and sharing the work provided it is properly cited. The work cannot be changed in any way or used commercially without permission from the journal.

## Glossary

CAE = childhood absence epilepsy; EAOE = early absence onset epilepsy; **Glut1DS** = GLUT1 deficiency syndrome; **ID** = intellectual disability; **JAE** = juvenile absence epilepsy; **LP** = lumbar puncture; **PED** = paroxysmal exercise-induced dyskinesia; **SD** = standard deviation.

## Discussion

METAglut1 is an easily performed, robust, and noninvasive diagnostic test for the diagnosis of Glut1DS, which allows wide screening of children and adults, including those with atypical forms of this treatable condition.

## Classification of Evidence

This study provides Class I evidence that a positive METAglut1 test accurately distinguishes patients with suspected GLUT1 deficiency syndrome from other neurologic syndromes as compared with invasive and genetic testing.

GLUT1 deficiency syndrome (Glut1DS) is a rare and disabling neurologic disease that can be treated.<sup>1</sup> It is, therefore, of utmost importance to raise awareness about its diagnosis among the medical community. Glut1DS is caused by impaired glucose transport across the blood-brain barrier and into glial cells because of heterozygous, mostly de novo, variants in the *SLC2A1* gene encoding the glucose transporter GLUT1. GLUT1 is a membrane-bound glycoprotein that is particularly abundant in human erythrocytes and brain endothelial and glial cells. Its dysfunction limits brain glucose availability and leads to brain energy deficiency. Besides the classical severe infantile-onset epileptic encephalopathy, Glut1DS also manifests with a wide range of neurologic symptoms in children and adults, including epilepsy, permanent motor disorders, paroxysmal movement disorders, and cognitive impairment, either combined or isolated.<sup>1-3</sup> The early detection of Glut1DS is critical<sup>4</sup> because the disease is treatable with ketogenic diets<sup>5,6</sup> or novel experimental therapies.<sup>7</sup>

A recent work estimates the disease incidence in the general population to be higher than 1 in 24,000.<sup>8</sup> This number only takes into account patients presenting with epilepsy. Some patients present only with movement disorders and/or learning difficulties.<sup>9</sup> Given the number of patients currently identified in registries (e.g., approximately 500–1,000 patients in the United States, 150–200 patients in France, and 60–80 patients in Spain), it is highly likely that a large number of patients with Glut1DS have currently gone undiagnosed. These numbers highlight the importance of tackling underdiagnoses and medical wandering and urge the medical community to improve both awareness about the disease and diagnostic strategy. However, this is challenging for physicians because, on the one hand, the clinical spectrum is very protean, encouraging more frequent testing for Glut1DS, but on the other hand, the current diagnostic strategy relies, as a first step, on an invasive and strict procedure—that is, lumbar puncture (LP) performed in the fasting state with glycemia measured right before LP—followed by genetic analyses (targeted *SCL2A1* analysis or gene panels or whole-exome

sequencing). This diagnostic sequence limits the number of patients able to receive the standard of care.

Easy access to a blood biomarker for the early and fast diagnosis of Glut1DS could be determinant for patient outcome and of a major economic effect because earlier treatment is associated with greater patient's prognosis. METAglut1 is a simple test that relies on the quantification of GLUT1 on the erythrocyte surface.<sup>10</sup> It thus provides direct labeling of fresh red blood cells by flow cytometry, similar to routine flow cytometry-based assays in hematology and immunology performed by routine laboratory testing. Only a simple blood draw in an EDTA tube is needed, and it does not require the patient to fast beforehand. A pilot cohort of 30 patients estimated that METAglut1 was 77% sensitive and very specific for Glut1DS.<sup>11</sup> These encouraging results prompted us to evaluate the diagnostic performance of METAglut1. To this end, we conducted a multicenter validation study in France involving 33 centers.

## Methods

### Standard Protocol Approvals, Registrations, and Patient Consents

This study was registered and approved by ANSM (French Health Authority) and by the ethics committee CPP Ouest V de Rennes (France) under French national identifier ID-RCB 2017-A01473-50. The study was registered on ClinicalTrials.gov under identifier NCT03722212. Written informed consent was obtained from all participants (or guardians of participants) before being enrolled in the study (consent for research).

### Study Design

To assess whether METAglut1 has similar diagnostic performances compared with glycorrachia, we enrolled both a prospective cohort and a retrospective cohort through 33 French participating centers, involving more than 100 neurologists and neuropsychiatrists. The recruitment started in September 2018 and ended in March 2021.

The prospective cohort consisted of patients presenting with a clinical suspicion of Glut1DS and blind-tested with METAgglut1 along with the reference strategy, which consists of a LP for glycorrachia measurement completed by *SLC2A1* molecular analyses. In the case of an uncertain diagnosis because of potentially discordant results, we further assessed the patient status with an ex vivo functional glucose uptake assay performed on the patient red blood cells. Glycorrachia, lactatorrachia, glycemia, and *SLC2A1* molecular analyses were determined at each center under the current standard of care.

The retrospective cohort consisted of patients already diagnosed with Glut1DS based on the reference strategy (i.e., compatible clinical phenotype associated with pathogenic *SLC2A1* variants or hypoglycorrachia and *SCL2A1* variants of uncertain pathogenicity).

Both cohorts were tested with METAgglut1, blind to the patients' condition—clinical, biochemical, and molecular data were not available to the central laboratory performing the test.

## Participants

We enrolled both children and adults. Children were older than 3 months because early infantile red blood cells are 20% larger than adult cells with higher GLUT1 levels,<sup>12</sup> which is a confounding factor for the interpretation of GLUT1 expression.

For the prospective cohort, we used the following inclusion criteria: (1) patients with classical phenotypes of Glut1DS: (i) encephalopathy with drug-resistant epilepsy and microcephaly, (ii) early-onset absence epilepsy characterized by EEG, or (iii) generalized epilepsy with a personal or family history of paroxysmal exercise-induced dyskinesia; or (2) patients with atypical forms of Glut1DS defined as unexplained forms (i.e., the absence of argument for an infectious, inflammatory, or tumoral cause) of (1) childhood epilepsy occurring after the age of 4 years characterized by EEG or severe juvenile epilepsy occurring after 10 years characterized by EEG; (2) developmental delay or intellectual disability with a history of epilepsy not yet characterized or a history of drug-resistant epilepsy; (3) paroxysmal movement disorders (pyramidal, ataxic, dyskinetic, ocular), including abnormal movements triggered or aggravated by fasting, exercise, stress, or emotion; (4) permanent movement disorders (pyramidal, ataxic, or dyskinetic) with a history of epilepsy or learning disorders; and/or (5) the patient referred to pediatrics for repeated malaise of unknown origin.

For the retrospective cohort, patients already diagnosed with Glut1DS, based on pathogenic *SLC2A1* variants or hypoglycorrachia and likely pathogenic *SCL2A1* variants, were eligible. Patients suspected to have Glut1DS with a compatible phenotype, but inconsistent results for the aforementioned parameters (e.g., *SCL2A1* variants of uncertain

pathogenicity), and so-called possible Glut1DS were also eligible. For the latter patients, the glucose uptake assay was prescribed to confirm or rule out the diagnosis.

For all patients, exclusion criteria were (1) patients with brain imaging suggestive of a cause other than Glut1DS and (2) situations that could be confounding factors for the interpretation of GLUT1 expression on erythrocytes: (1) patients younger than 3 months; (2) patients with sickle cell anemia, as erythrocytes have higher levels of GLUT1<sup>13</sup>; and (3) patients having undergone a heterologous bone marrow transplant or who had a blood transfusion in the past 120 days because normal erythrocytes can bias the mean GLUT1 expression on the erythrocyte population measured by flow cytometry analysis.

## CSF Analyses

CSF glucose and lactate were measured at each center under routine care settings, after at least 4 hours of fasting, along with glycemia, which was measured immediately before the LP.

## *SLC2A1* Molecular Analyses

*SLC2A1* molecular analyses were performed either through direct Sanger sequencing and/or multiplex ligation-dependent probe amplification or through a gene panel tailored for epilepsy or movement disorders or through exome sequencing. Variants were interpreted by geneticists and classified as benign or likely benign (class 1 and 2), variants of unknown significance (VUS) (class 3), probably damaging (class 4), or pathogenic variants (class 5), based on in silico predictive algorithms (CADD, AlignGVGD, SIFT, Polyphen2, MutationTaster and Varsome) with Alamut Visual (Interactive Biosoftware, Rouen, France), frequency in international databases (gnomAD, dbSNP), and segregation data, according to ACMG guidelines.<sup>14</sup>

## Erythrocyte Analyses

METAgglut1 (METAFORE biosystems, Paris, France) is a CE-marked in vitro diagnostic medical device. The innovation stems from seminal work of academic laboratories and has been turned into an assay which has received the CE mark to facilitate implementation in routine testing laboratories. This test comprises a specially designed assay based on flow cytometry and software for automated computation. A soluble ligand that harbors the receptor-binding domain derived from the HTLV2 envelope glycoprotein (H2RBD) is currently the only reagent that recognizes specifically GLUT1 on red blood cells.<sup>15</sup> It thus provides direct labeling of fresh red blood cells by flow cytometry, similar to routine flow cytometry-based assays in hematology and immunology performed by routine testing laboratories. The sample preparation protocol is minimal, requiring only blood dilution before labeling, followed by washing. Multiple samples can be processed in parallel in a 2-hour run experiment, from sample preparation to results ready to be released. The software includes a series of quality controls of the samples and the run,

**Table 1** Clinical Characteristics of All Included Study Participants

| Demographic data  | Prospective cohort n = 549 | Retrospective cohort n = 87 |
|---|----------------------------|-----------------------------|
| Sex, Female, n (%)  | 251 (46%)                  | 43 (49%)                    |
| Age at inclusion in y, mean (SD)  | 11,6 (13,1)                | 13,2 (13,4)                 |
| Age at inclusion in classes, n (%)  |                            |                             |
| [3–24] mo   | 76 (14%)                   | 3 (4%)                      |
| [2–18] y  | 382 (69%)                  | 56 (64%)                    |
| ≥ 18 y  | 91 (17%)                   | 28 (32%)                    |
| Inclusion criteria (prospective cohort)   |                            |                             |
| Classical form, n (%)   | 156 (28%)                  | —                           |
| Encephalopathy with drug-resistant epilepsy and microcephaly                                  | 18 (12%)                   | —                           |
| Early-onset absence eEpilepsy (EOAE) characterized by EEG                                     | 136 (87%)                  | —                           |
| Generalized epilepsy with a personal or family history of PED                                 | 2 (1%)                     | —                           |
| Atypical form, n (%)  | 393 (72%)                  | —                           |
| Epilepsy (CAE, JAE, intellectual disability with a history of epilepsy drug-resistant or not) | 129 (33%)                  | —                           |
| Abnormal movement (permanent or paroxysmal)   | 129 (33%)                  | —                           |
| Epilepsy associated with abnormal movement  | 11 (3%)                    | —                           |
| Other associated atypical forms   | 124 (31%)                  | —                           |
| Inclusion criteria (retrospective cohort)   |                            |                             |
| Patients with confirmed Glut1DS diagnosis at inclusion  | —                          | 74 (85%)                    |
| Patients with pending diagnosis at inclusion (inconsistent biological or genetic data)        | —                          | 13 (15%)                    |
| Neurologic symptoms at inclusion (prospective) or at diagnosis (retrospective)                |                            |                             |
| Epilepsy, n (%)   | 352 (64%)                  | 29 (33%)                    |
| Atypical absences   | 124 (23)                   | 7 (8%)                      |
| Partial epilepsy (focal)  | 26 (5%)                    | 0                           |
| Myoclonic epilepsy  | 23 (4%)                    | 3 (3%)                      |
| Tonic/generalized clonic epilepsy   | 46 (8%)                    | 3 (3%)                      |
| Febrile epilepsy  | 8 (1%)                     | 1 (1%)                      |
| Atonic epilepsy   | 4 (1%)                     | 2 (2%)                      |
| Several types of associated epilepsy  | 120 (22%)                  | 12 (14%)                    |
| Not reported  | 1 (<1%)                    | 1 (1%)                      |

**Table 1** Clinical Characteristics of All Included Study Participants (*continued*)

| Demographic data                          | Prospective cohort n = 549 | Retrospective cohort n = 87 |
|---|----------------------------|-----------------------------|
| Paroxysmal movements, n (%)               | 83 (15%)                   | 17 (20%)                    |
| Dyskinesia                                | 42 (7%)                    | 8 (9%)                      |
| Episodic ataxia                           | 21 (4%)                    | 7 (8%)                      |
| Abnormal eye movements                    | 16 (3%)                    | 2 (2%)                      |
| Not reported                              | 4 (1%)                     | 0                           |
| Epilepsy with paroxysmal movements, n (%) | 47 (9%)                    | 28 (32%)                    |
| Not reported                              | 67 (12%)                   | 13 (15%)                    |

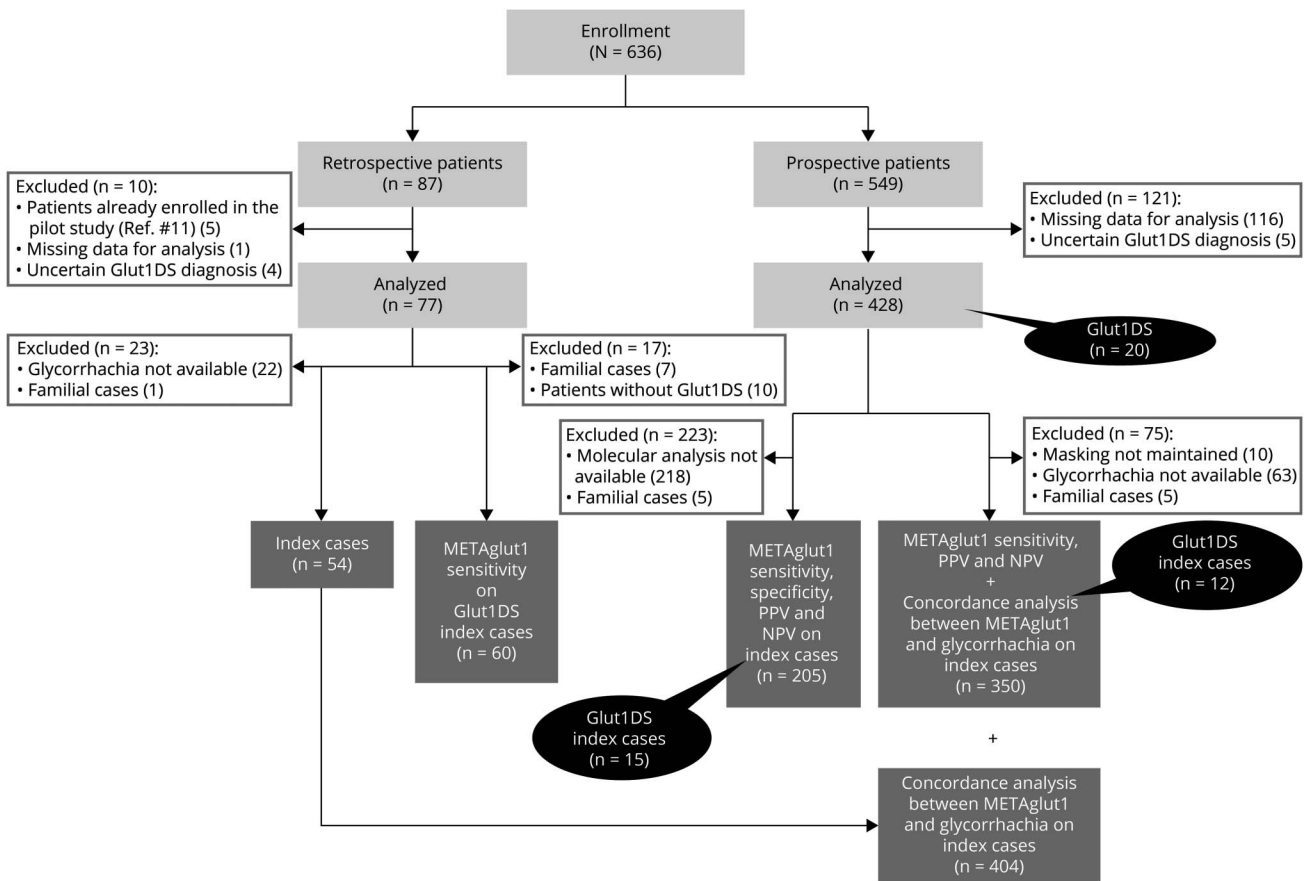
Abbreviations: CAE = childhood absence epilepsy; EOAE = early-onset absence epilepsy; JAE = juvenile absence epilepsy; N = number; PED = paroxysmal exercise-induced dyskinesia; SD = standard deviation.

minimizing time to verify and interpret the data. Altogether the workflow is efficient and ensures a quick turnaround time, which was approximately 48 hours during the study.

METAgglut1 was performed in a centralized testing laboratory (Laboratoire CERBA, Saint-Ouen l'Aumône, France), and all functional glucose uptake assays were performed at the *Institut de Génétique Moléculaire de Montpellier* (IGMM, CNRS, France). Both laboratories were blinded to patient's clinical diagnosis or any other biological data when performing the analyses. To avoid bias, the METAgglut1 result was also blinded to the investigator until the reference strategy was filed in the eCRF, that is, when the glycorrachia result was available and molecular analyses were prescribed. This procedure ensured proper and timely clinical management of patients with Glut1DS. Blood samples were collected in EDTA tubes and then sent and stored at 4°C until analyses. The METAgglut1 test was performed within 7 days after sampling by the same 4 trained technicians throughout the study. Results were expressed as differences of GLUT1 detection on the cell surface compared with its mean expression across at least 6 samples. Previous results have demonstrated that coefficients of variation were below 5% both in repeatability and reproducibility experiments, allowing for a deployment in routine testing laboratories.

When needed, a sensitive functional glucose uptake assay with red blood cells was performed as described.<sup>16</sup> Once implemented at IGMM, the assay was qualified before the start of the study and demonstrated a mean coefficient of variation of 6% (<8%). Briefly, blood samples were collected in ACD tubes and shipped and stored at 4°C until analyses. The assay was performed at precisely 7 days after sampling for every patient to minimize variability because of potential red blood cell lesions that would occur during storage. Glucose uptake was expressed as % of the mean of uptakes measured with 2–3

**Figure 1** Patient Groups Used for the Calculation of Diagnostic Performance



We enrolled 549 patients in the prospective cohort and 87 patients in the retrospective cohort. Within the prospective cohort, 121 participants had to be excluded from the analyses, mainly because METAgglut1 was the only available test for these patients ( $n = 116$ ), with neither available glycorrachia (lumbar puncture refused by the patients or their caregivers) nor molecular analyses, or because the final diagnosis remained uncertain ( $n = 5$ ). After excluding mainly patients for whom molecular analyses were not available ( $n = 218$ ) and a few familial cases ( $n = 5$ ), 205 index patients were used to compute the sensitivity, specificity, and positive and negative predictive values of METAgglut1. These performance criteria were also computed on 350 prospective patients with available glycorrachia, after excluding 5 familial cases and 10 patients for whom blinding was not maintained—for example, patients for whom glycorrachia was performed as a confirmatory test after METAgglut1 or molecular analyses. Concordance analyses between METAgglut1 and glycorrachia were performed on this same subgroup of patients. Within the retrospective cohort, 10 patients were excluded because of previous enrollment in the initial cohort ( $n = 5$ ), inconclusive or missing data ( $n = 1$ ), or uncertain Glut1DS diagnosis ( $n = 4$ ). From the 77 remaining patients, 60 index patients with Glut1DS were used for sensitivity analysis, after excluding 7 familial cases and revised Glut1DS diagnosis ( $n = 10$ ). The 54 index patients for whom glycorrachia was available from the retrospective cohort were used for concordance analyses between METAgglut1 and glycorrachia, after merging them with the prospective cohort of 350 index patients. PPV = positive predictive value; NPV = negative predictive value.

healthy blood donors taken as controls and stored for the same amount of time and in the same conditions. Healthy blood donor samples were provided by the French Blood Center (EFS, Saint-Denis, France) under agreement # 16/EFS/007.

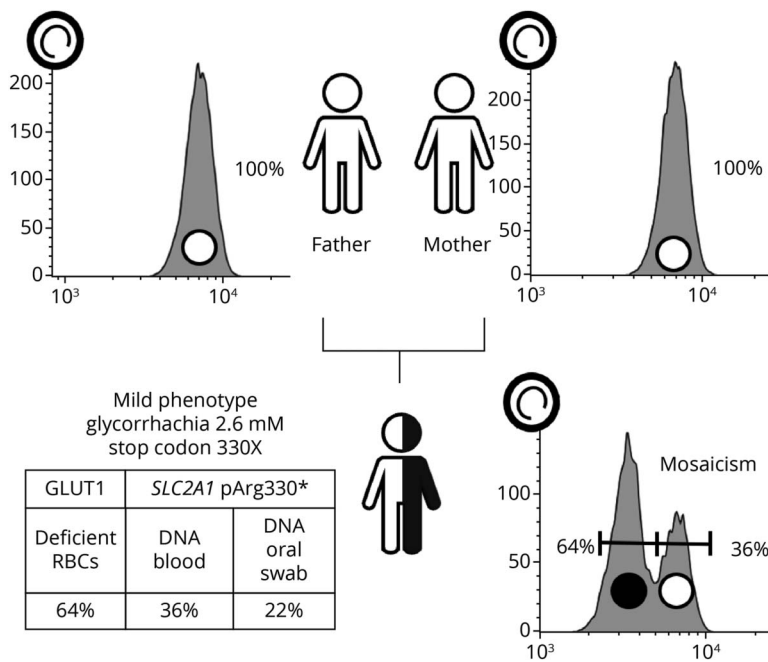
### Glut1DS Diagnosis

Criteria for Glut1DS followed the most recent recommendations published by an international Glut1DS working group<sup>17</sup> and were established by an international scientific committee (FM, RP, AGC, SVB, DCD). Glut1DS was confirmed in patients with a compatible clinical phenotype associated with glycorrachia below 2.2 mM (40 mg/dL) and a pathogenic or likely pathogenic *SLC2A1* variant. Nonetheless, because the normal range of glycorrachia slightly increases with age,<sup>18</sup> this feature may be more complex to interpret.

Therefore, particular attention was given to patients with glycorrachia comprised between 2.2 (40 mg/dL) and 3 mM (54 mg/dL) and any argument in favor of Glut1DS, such as typical symptoms, or a VUS in the *SLC2A1* gene. In the case of an uncertain diagnosis, an abnormal erythrocyte glucose uptake assay confirmed the diagnosis of Glut1DS. The glucose uptake assay positivity threshold was set at 74% of the controls, as previously reported.<sup>16</sup>

Because METAgglut1 is a blood test that can be used as a screening test to improve timely diagnosis, its positive and negative predictive values are critical. Thus, we decided to compare the diagnostic performances of glycorrachia and METAgglut1 using thresholds with high specificity. For CSF, hypoglycorrachia threshold positivity was set at 2.2 mM (40 mg/dL), because specificity diminishes drastically above

**Figure 2** Identification of a Case of Genetic Mosaicism With METAglut1



A 12-year-old adolescent patient presented with a moderate phenotype (myoclonic epilepsy, attention, and executive function deficit) and a glycorrachia of 2.6 mM (47 mg/dL). His red blood cells analyzed with METAglut1 showed an unusual feature with 2 distinct red blood cell populations. One population representing 36% of the patient red blood cells had a normal expression of GLUT1 while the other representing 64% of red blood cells had a distinct lower level of GLUT1 (53% of the controls). Parents of the child were healthy, with normal GLUT1 levels on red blood cells. On deeper sequencing analysis, it was confirmed that 36% of SLC2A1 copies in the patient's blood DNA and 22% in his oral swab DNA harbored a de novo premature stop codon in the SLC2A1 gene (pArg330\*).

this value,<sup>19,20</sup> along with a CSF/blood glucose ratio below 0.45 and lactatorrhachia below 1 mM (9 mg/dL). For METAglut1, the initial pilot study set a threshold of positivity at a 20% decrease of GLUT1 expression on erythrocytes as diagnostic for Glut1DS.<sup>11</sup> In other words, if a sample showed more than a 20% decrease in GLUT1 expression, it was specific of Glut1DS. This interpretation threshold was chosen a priori for METAglut1 diagnostic performances. *Post hoc* analyses showed that the assay was even more specific at the -24% cutoff. Performance assessment for METAglut1 was thus obtained at the latter refined interpretation threshold.

### Data Collection and Security

Data related to patient symptoms were collected within the eCRF on the patient's enrollment, allowing investigators to provide some more details following the specification of the summarized clinical presentation (inclusion criteria). Patients were last recruited in March 2021, and data collection ended in July 2021. A thorough data management plan was implemented with on-site monitoring, automated controls of eCRF, and recoding after queries and data reviewing.

### Statistical Analyses

Statistical analyses were performed on all patients selected in the study and whose data were declared usable during a data review and for whom the masking procedure was fulfilled. Statistical analyses were univariate descriptive or based on cross-tabulations. Data management and statistical analyses were performed using SAS V9.4 software (NC) by CEMKA (Bourg-la-Reine, France). The 95% confidence intervals were calculated for the main diagnostic performance criteria and

when their estimation was considered necessary. The Cohen kappa coefficient was used for concordance analyses, with null hypothesis kappa = 0 with a one-sided test.<sup>21</sup> Based on an estimated prevalence of 2% among eligible patients for this study, a number of 115 patients would lead to a power of 0.9 with a significance level of 0.05.

### Data Availability

The data that support the findings of this study are available from the corresponding authors on reasonable request. Permissions are required to gain access to the data resources, subject to a successful registration and application process.

## Results

### Patient Groups

We enrolled 549 patients in the prospective cohort: 28% presented with classical phenotypes and 72% had atypical clinical presentations. Sex ratio (determined from preexisting medical records) was close to 1/1, with 46% of females; 14% were infants between 3 months and 2 years, 69% were patients between 2 and 18 years, and 17% were adults. These demographic data were in line with the literature, with no bias toward sex, and a diagnosis that was made mostly in children with a mean age of 7 years.<sup>20</sup> In the retrospective cohort, we enrolled 87 previously diagnosed patients with Glut1DS. Ethnicity data were not available. Table 1 summarizes the clinical characteristics of all included participants. After data collection, review, and analysis by the scientific committee, the 636 enrolled patients were classified as patients either with Glut1DS or not.

**Table 2** Clinical and Biological Description of Patients With Glut1DS Not Detected by METAgut1

| Patient ID                    | Cohort | Age at inclusion (y) | Sex | CSF glucose mM* | Glut1 expression % | Glucose uptake % | SLC2A1 variant# Class                            | Age at onset and 1st symptom       | Epilepsy                                   | Permanent motor disorder | Paroxysmal movement disorder | Cognitive impairment                                    |
|-------------------------------|--------|----------------------|-----|-----------------|--------------------|------------------|--|------------------------------------|--|--------------------------|------------------------------|---|
| <b>01</b>                     | R      | 10.8                 | F   | <b>1.8 (32)</b> | 91                 | 164              | c.94G>C; p.(Val32Leu) <sup>27</sup><br>Class 4   | 0.5 y Epilepsy                     | Generalized tonic-clonic epilepsy          | Ataxia                   | Yes                          | Attention and executive function deficit                |
| <b>02 Family A index case</b> | P      | 18.2                 | F   | NA              | 99                 | <b>67</b>        | c.101A>G; p.(Asn34Ser) <sup>28</sup><br>Class 5  | 3 y Epilepsy                       | Generalized tonic-clonic epilepsy          | No                       | No                           | Moderate ID   |
| <b>03 Family A</b>            | P      | 2.7                  | M   | NA              | 98                 | <b>66</b>        | c.101A>G; p.(Asn34Ser) <sup>28</sup><br>Class 5  | 1 y Epilepsy                       | EAOE and generalized tonic-clonic epilepsy | No                       | No                           | Mild ID   |
| <b>04 Family A</b>            | P      | 6.9                  | M   | NA              | 101                | <b>70</b>        | c.101A>G; p.(Asn34Ser) <sup>28</sup><br>Class 5  | 5 y Epilepsy                       | Atonic seizures                            | No                       | No                           | Mild ID   |
| <b>05</b>                     | R      | 7.6                  | M   | <b>1.6 (29)</b> | 96                 | NA               | c.102T>G; p.(Asn34Lys)<br>Class 5                | 0.3 y Epilepsy                     | EAOE and focal epilepsy                    | No                       | No                           | Coordination and attention deficit                      |
| <b>06</b>                     | P      | 10.4                 | M   | <b>1.9 (34)</b> | 92                 | 105              | c.1300T>G; p.(Phe434Val)<br>Class 4              | 2 y Epilepsy                       | EAOE                                       | No                       | No                           | Mild ID   |
| <b>07</b>                     | R      | 16.7                 | M   | <b>1.9 (34)</b> | 113                | 112              | c.193T>C; p.(Trp65Arg)<br>Class 4                | 0.5 y Ocular movement              | No   | Dystonia                 | Yes                          | Mild ID   |
| <b>08</b>                     | P      | 56.1                 | F   | <b>2.1 (38)</b> | 107                | 100              | c.377G>A; p.(Arg126His) <sup>29</sup><br>Class 5 | 4 y Psychomotor delay              | No   | Dystonia and spasticity  | No                           | Mild ID   |
| <b>09</b>                     | R      | 21.2                 | M   | <b>1.8 (32)</b> | 91                 | <b>52</b>        | c.376C>T; p.(Arg126Cys) <sup>30</sup><br>Class 5 | 2 y Epilepsy                       | EAOE                                       | Spasticity               | Yes                          | Coordination, attention, and executive function deficit |
| <b>10</b>                     | R      | 17.6                 | F   | <b>2.1 (38)</b> | 89                 | 77               | c.376C>T; p.(Arg126Cys) <sup>30</sup><br>Class 5 | 0.5 y Ocular movement              | Focal epilepsy                             | Spasticity (mild)        | Yes                          | Coordination, attention, and executive function deficit |
| <b>11</b>                     | R      | 39.4                 | M   | NA              | 99                 | <b>65</b>        | c.499G>A; p.(Gly167Ser)<br>Class 4               | 5 y Malaises                       | No   | No                       | No                           | Attention and executive function deficit                |
| <b>12</b>                     | R      | 12.3                 | M   | NA              | 112                | 79               | c.493G>A; p.(Val165Ile) <sup>31</sup><br>Class 5 | 2.5 y Paroxysmal movement disorder | Atypic absences                            | No                       | Yes                          | Attention and executive function deficit                |

Continued



**Table 2** Clinical and Biological Description of Patients With Glut1DS Not Detected by METAgut1 (continued)

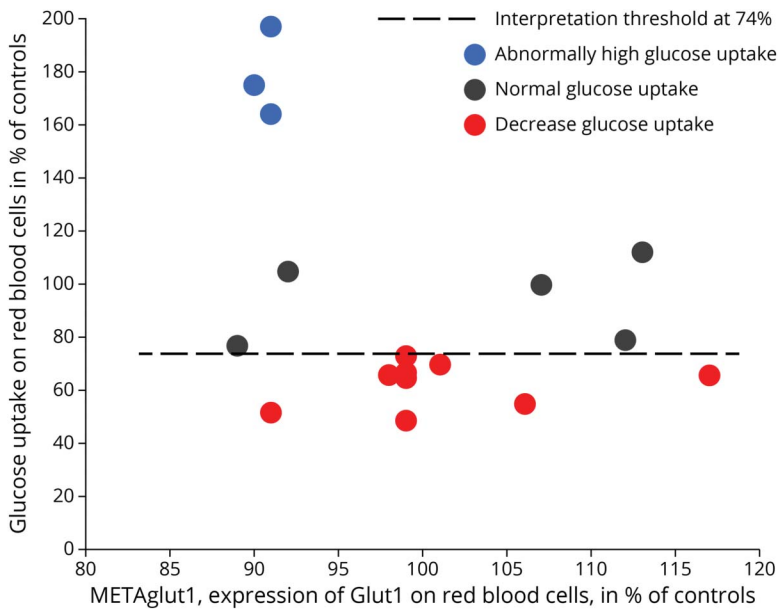
| Patient ID                    | Cohort | Age at inclusion (y) | Sex | CSF glucose mM* | Glut1 expression % | Glucose uptake % | SLC2A1 variant <sup>#</sup> Class             | Age at onset and 1st symptom      | Epilepsy                          | Permanent motor disorder | Paroxysmal movement disorder | Cognitive impairment  |
|-------------------------------|--------|----------------------|-----|-----------------|--------------------|------------------|---|-----------------------------------|-----------------------------------|--------------------------|------------------------------|---|
| <b>13 Family B</b>            | P      | 39.9                 | F   | NA              | 99                 | <b>49</b>        | c.539T>A; p.(Met180Lys) <sup>32</sup> Class 4 | 5 y Paroxysmal movement disorder  | No                                | Ataxia                   | Yes                          | Moderate ID   |
| <b>14 Family B index case</b> | P      | 32.8                 | F   | 2.4 (43)        | 99                 | <b>73</b>        | c.539T>A; p.(Met180Lys) <sup>32</sup> Class 4 | 13 y Paroxysmal movement disorder | No                                | Ataxia                   | Yes                          | Mild ID   |
| <b>15 Family B</b>            | P      | 67.8                 | M   | NA              | 106                | <b>55</b>        | c.539T>A; p.(Met180Lys) <sup>32</sup> Class 4 | 2 y Psychomotor delay             | No                                | Ataxia, dystonia         | Yes                          | Mild ID   |
| <b>16</b>                     | P      | 4.8                  | M   | <b>1.9 (34)</b> | 90                 | <i>175</i>       | c.884C>T; p.(Thr295Met) <sup>28</sup> Class 5 | 2 y Psychomotor delay             | No                                | No                       | No                           | Speech, coordination, attention, and executive function deficit |
| <b>17 Family C index case</b> | R      | 17.3                 | M   | NA              | 110                | NA               | c.940G>A; p.(Gly314Ser) <sup>33</sup> Class 5 | 6 y Paroxysmal movement disorder  | No                                | Dystonia                 | Yes                          | No  |
| <b>18 Family C</b>            | R      | 38.6                 | M   | NA              | 121                | NA               | c.940G>A; p.(Gly314Ser) <sup>33</sup> Class 5 | 4 y Paroxysmal movement disorder  | No                                | Dystonia                 | Yes                          | Coordination and attention deficit                              |
| <b>19</b>                     | P      | 11.9                 | F   | 2.3 (41)        | 91                 | <i>197</i>       | c.955G>C; p.(Ala319Pro) Class 4               | 3 y Malaise                       | No                                | Ataxia (mild)            | Yes                          | Coordination and attention deficit                              |
| <b>20</b>                     | R      | 3.7                  | F   | <b>1.3 (23)</b> | 117                | <b>66</b>        | c.929C>T; p.(Thr310Ile) <sup>34</sup> Class 5 | 3 y Epilepsy                      | Myoclonic epilepsy                | No                       | No                           | Coordination and attention deficit                              |
| <b>21</b>                     | R      | 3.4                  | M   | <b>1.9 (34)</b> | 87                 | NA               | c.376C>T; p.(Arg126Cys) <sup>30</sup> Class 5 | 0.5 y Malaise                     | Generalized tonic-clonic epilepsy | No                       | Yes                          | Coordination and attention deficit                              |

Abbreviations: EAOE = early absence onset epilepsy; F = female; ID = intellectual disability; M = male; NA = non available; in bold, abnormal values for CSF glucose and Glucose uptake; in italics, abnormally high glucose uptake; P = prospective; R = retrospective; y = year.

\* In (), values of CSF glucose in mg/dL.

# Previously reported variants.<sup>27-34</sup>

**Figure 3** Glucose Uptake Assay



Glucose uptake assay by red blood cells was performed on METAgglut1 false-negative patients. The glucose uptake assay interpretation threshold was set at 74% of controls. In 12 index patients with Glut1DS, 4 turned out to have an abnormally low glucose uptake, whereas 5 displayed a normal glucose uptake and 3 an abnormally high glucose uptake.

During the course of the study, a total of 15 index cases (8 with classical phenotypes and 7 with atypical phenotypes) and, overall, 20 patients with Glut1DS (i.e., 3 families of 2–3 patients) were newly diagnosed among the 428 prospective participants for whom glycorrachia and/or molecular analyses could be obtained (Figure 1). Among these 428 patients, 205 index patients for whom molecular analyses were available were used to compute the sensitivity and specificity of METAgglut1 as well as its positive and negative predictive values (Figure 1). Concordance analyses between METAgglut1 and glycorrachia were performed on a larger group of 350 prospective patients for whom both glycorrachia and METAgglut1 were available (Figure 1). Only index cases were used to compute diagnostic performances of the diagnostic test parameters because Glut1DS mostly occurs de novo and familial cases would have introduced bias because of the enrichment of certain *SLC2A1* variants.

Within the retrospective cohort of 87 patients, demographic data were comparable with those of the prospective cohort—a sex ratio of 1/1, 4% of infants between 3 months and 2 years, 64% of patients between 2 and 18 years, and 32% of adults. From the 77 patients with Glut1DS who were retained for analyses, 60 index patients were used for sensitivity analysis, and 54 index patients were used for concordance analyses between METAgglut1 and glycorrachia (Figure 1).

### Diagnostic Performance of METAgglut1

When using a threshold of 76% GLUT1 detection on erythrocytes, METAgglut1 sensitivity was found to be 85% (95% CI 76–94) in the retrospective cohort of 60 index

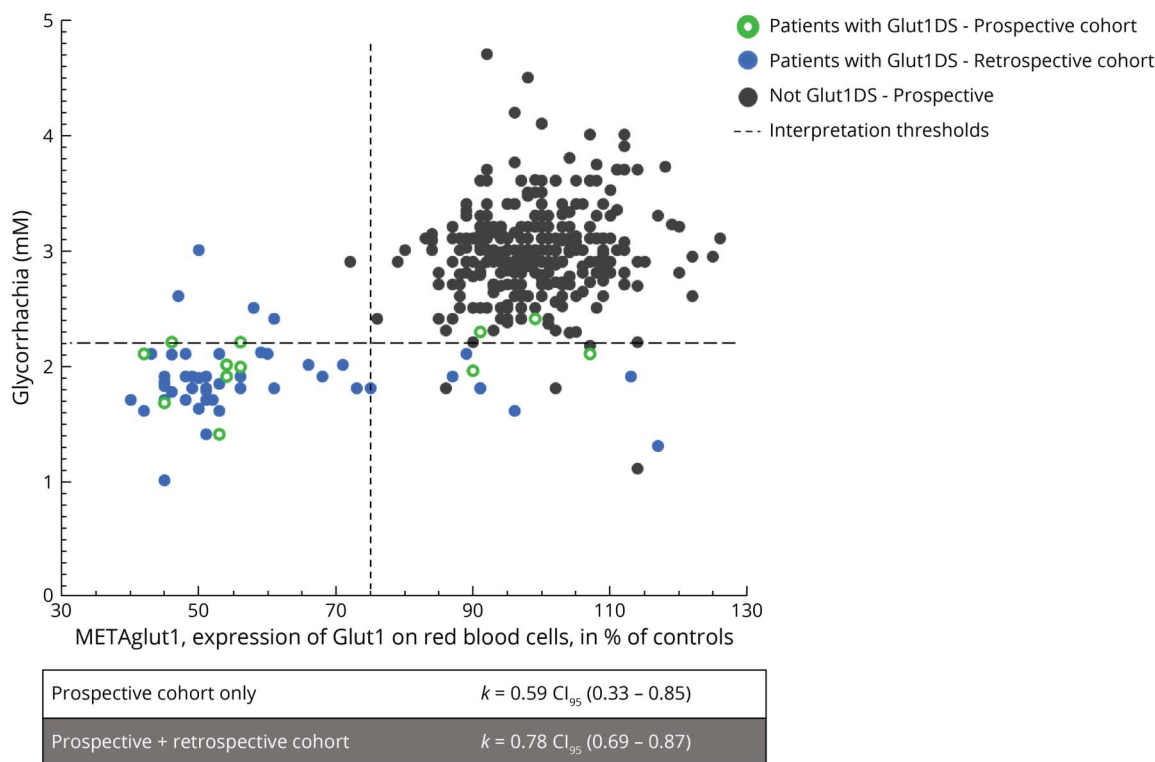
patients with Glut1DS. Sensitivity in the prospective group of 205 patients, including 15 index patients with Glut1DS, was 60% (35–85). Specificity was confirmed to reach 99% (98–100), and positive and negative predictive values were 90% (71–100) and 97% (95–99), respectively. A drop in GLUT1 detection greater than 28%, which was the case for most patients, was associated with a positive predictive value of 100%. Overall, METAgglut1 was 80% sensitive and >99% specific for the diagnosis of Glut1DS. Notably, METAgglut1 allowed us to detect a *SCL2A1* mosaicism in a 12-year-old adolescent patient presenting with a moderate phenotype (Figure 2).

Fifteen of 75 (20%) index patients with Glut1DS were negative for METAgglut1. All these patients presented with mild-to-moderate phenotypes (Table 2). The glucose uptake assay could be performed for 12 of these 15 false-negative patients, and 8 had a negative glucose uptake assay (Figure 3). Of note, 3 of these patients had glucose uptake kinetics that were remarkably higher than controls (>160%) while remaining within the normal range for METAgglut1 (Table 2). All pathogenic variants associated with METAgglut1 false-negative results were missense mutations (Table 2) while nonsense mutations, deletions, and premature stop codons were only found in the METAgglut1-positive patients (data not shown).

### Comparison of METAgglut1 Diagnostic Performance With Glycorrachia

In our study, the 2.2-mM (40 mg/dL) glycorrachia threshold matched the low-end value of glycorrachia in the non-Glut1DS population (Figure 4). When performing calculation on patients with both tests available, the diagnostic

**Figure 4** Concordance Analysis Between Glycorrhachia and METAgut1



All patients with both glycorrhachia and METAgut1 available at the time of completion of the study were used to draw the comparative distribution of the 2 biomarkers. The recommended interpretation thresholds are represented with dashed lines at 2.2 mM (40 mg/dL) for glycorrhachia and 76% of normal expression for METAgut1. The Cohen kappa coefficient was computed on the prospective cohort ( $n = 350$  patients) and the whole cohort—350 prospective patients and 48 retrospective patients—for whom both glycorrhachia and METAgut1 were available.

performances of METAgut1 were highly comparable with those of glycorrhachia with a sensitivity of 92% (84–99) for glycorrhachia vs 85% (75–95) for METAgut1 in the retrospective cohort, an equal sensitivity of 67% (40–93) in the prospective cohort, an equal negative predictive value of 99% (98–100), and a positive predictive value of 73% (46–99) for glycorrhachia vs 89% (68–100) for METAgut1. The diagnostic performance of the CSF/blood glucose ratio was similar to that of glycorrhachia. Furthermore, we observed a mean lactorrhachia of 1 mM (9 mg/dL) (range: 0.7–1.4 mM–6 to 12 mg/dL) for 90% of patients with Glut1DS, compared with a mean of 1.4 mM (12 mg/dL) (range: 0.8–1.9 mM–7 to 17 mg/dL) for 90% of patients without Glut1DS, supporting that CSF lactate is low-normal to low in Glut1DS.<sup>18</sup>

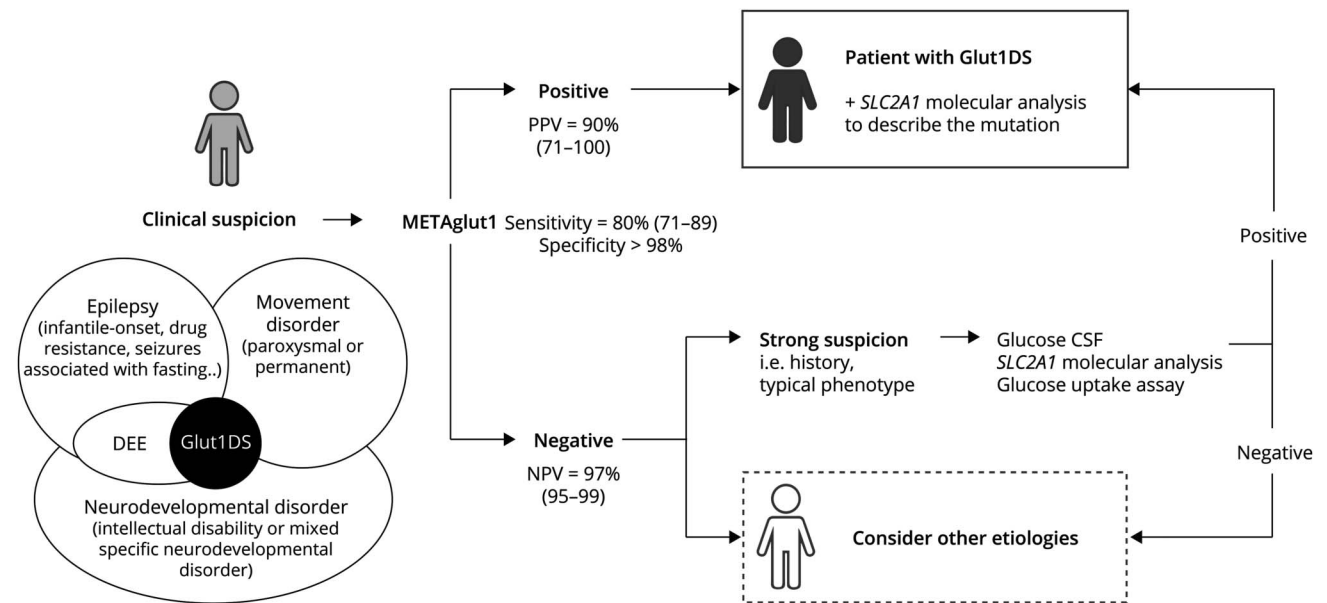
The small number of prospective patients, which is inherent to a rare disorder, did not allow us to perform statistical comparisons between the sensitivity of the 2 tests. Nevertheless, we applied a concordance analysis to further match the 2 diagnostic tests. METAgut1 and glycorrhachia were compared on the subset of 350 prospective patients for whom both tests were available. The 2 tests were in agreement, with a Cohen kappa coefficient of 0.59 (0.33–0.85; significantly better than 0 with  $p = 0.004$ ) (Figure 4). As Glut1DS is a rare disease, the large number of double negative cases (336) imbalances the matrix (6 double positives and 5 vs 3 single positives),

explaining the only moderate-to-strong agreement of 0.59 along with a wide 95% CI in the prospective cohort. Because both the prospective and retrospective cohorts have been analyzed by the same central laboratory unbeknownst of their status, we also performed concordance analyses in the cumulated cohort. The Cohen kappa coefficient then reached 0.78 (0.69–0.87; significantly better than 0 with  $p < 0.001$ ), which is considered as a substantial agreement (341 double negatives, 43 double positives, and 13 vs 7 single positives). The mean value falls close to the 0.8 threshold of Cohen kappa coefficient to state an almost perfect agreement. The low range of the 95% CI matched 0.7 that is classically considered as a good concordance, and its upper range encompassed values that are considered as an almost perfect agreement.

## Discussion

We demonstrated that the METAgut1 blood test can expedite the diagnosis of Glut1DS with 80% sensitivity and >99% specificity. Those values are comparable with the 77% sensitivity found in the pilot cohort.<sup>11</sup> Moreover, this multicenter prospective cohort allowed to estimate the positive and negative predictive values of METAgut1, which reached 90% (71–100) and 97% (95–100), respectively. We identified 20 patients with Glut1DS in the prospective cohort, which is in

**Figure 5** Proposed New Diagnostic Algorithm for Glut1DS Diagnosis in the Standard of Care



Positive and negative predictive values of METAgglut1 are those obtained from the prospective cohort, with all patients with confirmed Glut1DS, whether they had glycorrachia available. Glut1DS = Glut1 deficiency syndrome; DEE = developmental and epileptic encephalopathy; Se = sensitivity; Spe = Specificity; PPV = positive predictive value; NPV = negative predictive value; CSF = cerebrospinal fluid.

line with previous reports.<sup>22</sup> Indeed, the occurrence of Glut1DS within the so-called classical clinical forms has been estimated between 5% and 10%, whereas 1% to 2% of patients with Glut1DS are expected among the so-called atypical clinical forms.<sup>23</sup> Our study enrolled 156 patients with a classical phenotype, which would translate into an expected 7 to 16 patients among this population, and 393 patients with an atypical phenotype, corresponding to an expected 4 to 8 patients with Glut1DS. Thus, a total of 11–24 patients were expected in the prospective cohort, which compares very favorably with the 20 patients with Glut1DS whom we diagnosed in our study. Accordingly, the cohort used in this study can be validated as representative for Glut1DS.

Because hypoglycorrachia is a hallmark of Glut1DS and that LP is used as a first test in the current diagnostic strategy, we wished to compare glycorrachia levels with METAgglut1. In the retrospective and prospective cohorts, the diagnostic performances of both tests were highly similar in sensitivity, specificity, and positive and negative predicted values. They also demonstrated good concordance at the patient level. A slightly higher sensitivity was found for glycorrachia in the retrospective cohort compared with METAgglut1 (92% vs 85%, respectively). Such a bias was expected because most patients in this cohort were previously diagnosed based on hypoglycorrachia. Moreover, our study allowed us to determine the positive predictive value of glycorrachia, which appeared (even at the 2.2 mM/40 mg/dL threshold) to be lower than that of METAgglut1 (73% vs 89%, respectively).

Our study confirmed that 1 Glut1DS patient of 5 was negative for METAgglut1. Among these patients, we found that two-

thirds (8/12) were also negative for the glucose uptake assay, a very sensitive functional assay, which is considered the gold standard for assessing Glut1DS. Notably, the best cutoff values are equivalent for both erythrocyte tests, with approximately 74%–76% of the controls, and is likely because of similar biological parameters measured by the 2 assays. These findings highlight important diagnostic challenges in some patients with Glut1DS. A possible explanation for METAgglut1 false-negative results is that mutations are likely to bear different consequences on GLUT1 function in erythrocytes than they do on the blood-brain barrier, in part likely because of tissue-specific GLUT1 partners that can distinctively modulate the effect of the mutation on the erythrocyte surface. Because METAgglut1 relies on the quantification of GLUT1 presence on the erythrocyte surface by the H2RBD-specific ligand,<sup>24</sup> mutations that do not prevent either its binding or the transporter to be properly expressed on the cell surface, whether this stems from a problem of translation or folding or trafficking, are likely to remain undetected. This observation suggests that METAgglut1 false negatives reflect rather an altered glucose uptake kinetics than an effect on the actual presence of the protein on the cell surface. Accordingly, it appeared that all false-negative patients harbored missense mutations and presented with milder phenotypes. Although it is not a definitive conclusion, these mutations may only partially affect glucose transport, triggering moderate phenotypes in patients.

Our study validates prospectively and thoroughly a circulating biomarker against the reference diagnostic strategy that includes glycorrachia. The very good diagnostic performance of METAgglut1 in our multicenter cohort, which is the largest

reported for this disease, reinforces the clinical relevance of this test, which can be easily and rapidly used by prescribers. Unfortunately, this study did not allow us to formally establish the diagnostic time gained with METAgglut1 because most investigators opted to run both tests in parallel during inpatient clinics for practical reasons. With a typical turnaround of 48 hours, the test is robust with few retests necessary, thus warranting an easy adoption in routine clinical settings, notably in outpatient clinics. METAgglut1 can be proposed as a first-line investigation to test for Glut1DS without the constraints of a spinal tap, fasting, or expertise to interpret metabolic changes related to age.<sup>18</sup> Incidentally, but quite illustratively, this study led to diagnose a few patients with Glut1DS who, many years earlier, had a LP displaying hypoglycorrachia, but that went unnoticed, therefore leading to major delays in diagnosis and treatment. The specificity of METAgglut1 for Glut1DS is also of great added value, unlike hypoglycorrachia that can be also caused by hypoglycemia, meningitis, subarachnoid hemorrhage, or ventriculoperitoneal shunt systems. The high positive predictive value of METAgglut1 supports its use as a screening test for Glut1DS on patients because a positive result is actionable by triggering early treatment and, therefore, likely to greatly improve prognosis.<sup>4</sup> Furthermore, although next-generation sequencing (NGS) methodologies keep expanding worldwide, only a few countries can offer NGS as first-line investigations for the diagnosis of rare diseases, mainly in pediatrics. At best, the turnaround time is of several weeks to several months—as illustrated in our study with a large number of unavailable molecular analyses—which is not desirable for epileptic children with Glut1DS. Moreover, the interpretation of *SCL2A1* variants can be quite challenging, with frequent missense variants and a great proportion of VUS. In our study, METAgglut1 turned positive for 3 patients with *SCL2A1* VUS. Likewise, METAgglut1 can provide critical information regarding puzzling molecular analyses such as VUS or genetic mosaicism.

Glut1DS is an urgent diagnosis for patients, not to miss critical time where early treatments can be initiated to support brain development and function.<sup>25</sup> To this end, we suggest to perform METAgglut1 in any patient, after the age of 3 months, who presents with intellectual disability or mixed specific neurodevelopmental disorder, epilepsy (especially drug-resistant or ketogenic diet-responsive), deceleration of head growth, permanent movement disorders (cerebellar ataxia, dystonia, or spasticity), and/or paroxysmal movement disorders (Figure 5). If performed at an early symptomatic stage, this simple test will identify 80% of patients with Glut1DS right away among those with developmental and epileptic encephalopathy,<sup>26</sup> intellectual disabilities, or movement disorders. The high positive predictive value (90%) of METAgglut1 is of paramount importance for the diagnosis of Glut1DS and the initiation of dedicated treatments as soon as possible. Moreover, the good negative predictive value of the test (>95%) can be sufficient to rule out Glut1DS in most cases. However, in the case of a negative result but a strong

clinical suspicion, measurement of glycorrachia and/or *SLC2A1* molecular analyses are warranted to further explore the possibility of Glut1DS (Figure 5). Given the current estimated prevalence of Glut1DS, the availability of a simple blood test is a major milestone for patients with Glut1DS because their diagnosis and treatment will occur much faster.

## Acknowledgment

The authors thank warmly all the patients, their families, and the blood donors who participated in the study. This study was supported by French Health Authorities, through the Forfait Innovation, and we are very grateful to the French Health Ministry and Health Authority for their help. MS and DGi thank the Service Partenariat & Valorisation of CNRS DR13, the University of Montpellier MUSE program, and the IGMM direction for their constant support.

## Study Funding

This study was supported by French Health Authorities, through the Forfait Innovation, and has received funding from the European Union's Horizon 2020 research and innovation programme under grant agreement No 806038.

## Disclosure

F. Mochel serves on the scientific advisory board of Metafora biosystems; METAFORA biosystems is a startup that developed METAgglut1; D. Gras reports no disclosures relevant to the manuscript; MP. Luton reports no disclosures relevant to the manuscript; M. Nizou is an employee at Metafora biosystems; D. Giovannini reports no disclosures relevant to the manuscript; C. Delattre reports no disclosures relevant to the manuscript; M. Aubart reports no disclosures relevant to the manuscript; M. Barth reports no disclosures relevant to the manuscript; A. De Saint-Martin reports no disclosures relevant to the manuscript; D. Doummar reports no disclosures relevant to the manuscript; N. Essid reports no disclosures relevant to the manuscript; A. Garros reports no disclosures relevant to the manuscript; C. Hachon-Le Camus reports no disclosures relevant to the manuscript; C. Hoebcke reports no disclosures relevant to the manuscript; S. Nguyen The Tich reports no disclosures relevant to the manuscript; M. Périvier reports no disclosures relevant to the manuscript; S. Rivera reports no disclosures relevant to the manuscript; A. Rolland reports no disclosures relevant to the manuscript; A. Roubertie reports no disclosures relevant to the manuscript; C. Sarret reports no disclosures relevant to the manuscript; C. Sevin reports no disclosures relevant to the manuscript; D. Ville reports no disclosures relevant to the manuscript; M. Sitbon is the inventor of a patent describing the use of the H2RBD ligand for the evaluation of GLUT1 expression; he is the cofounder of Metafora biosystems and head of the scientific advisory board; JM. Costa is biologist at Cerba Healthcare, a testing laboratory implementing the Metaglut1 assay for the routine; R. Pons reports no disclosures relevant to the manuscript; A. Garcia-Cazorla reports no disclosures relevant to the manuscript; S. Vuillaumier-Barrot reports no disclosures relevant to the manuscript; V. Petit is a cofounder and CEO of

Metafora biosystems; O. Boespflug-Tanguy reports no disclosures relevant to the manuscript; and D. C. De Vivo serves on the scientific advisory board of Metafora biosystems. Go to [Neurology.org/N](https://www.neurology.org/N) for full disclosures.

## Publication History

Received by *Neurology* July 10, 2022. Accepted in final form March 2, 2023. Submitted and externally peer reviewed. The handling editor was Associate Editor Peter Hedera, MD, PhD.

## Appendix 1 Authors

| Name                            | Location  | Contribution   |
|---------------------------------|---|--|
| <b>Fanny Mochel, MD, PhD</b>    | Hôpital La Pitié-Salpêtrière, Assistance-Publique Hôpitaux de Paris, Inserm U1127, France   | Drafting/revision of the manuscript for content, including medical writing for content; major role in the acquisition of data; study concept or design; analysis or interpretation of data |
| <b>Domitille Gras, MD</b>       | Sorbonne University, Inserm U1127, CNRS UMR7225, Paris Brain Institute, Paris, France; 3.U1141 Neurodiderot, équipe 5 inDev, Inserm, CEA, UP UNIACT, Neurospin, Joliot, DRF, CEA-Saclay | Drafting/revision of the manuscript for content, including medical writing for content; major role in the acquisition of data; Study concept or design; analysis or interpretation of data |
| <b>Marie-Pierre Luton</b>       | Hôpital La Pitié-Salpêtrière, Assistance-Publique Hôpitaux de Paris, Inserm U1127, France   | Major role in the acquisition of data  |
| <b>Manon Nizou</b>              | Metafora Biosystems, Paris, France  | Major role in the acquisition of data  |
| <b>Donatella Giovannini</b>     | Institut de Génétique Moléculaire de Montpellier, Univ. Montpellier, CNRS, Montpellier, France  | Major role in the acquisition of data  |
| <b>Caroline Delattre</b>        | Hôpital La Pitié-Salpêtrière, Assistance-Publique Hôpitaux de Paris, Inserm U1127, France   | Major role in the acquisition of data  |
| <b>Mélodie Aubart, MD</b>       | Service de Neurologie Pédiatrique, Hôpital Necker-Enfants Malades, Assistance-Publique Hôpitaux de Paris, France  | Major role in the acquisition of data  |
| <b>Magalie Barth, MD</b>        | Service de Génétique, Centre Hospitalier Universitaire Angers, Angers, France   | Major role in the acquisition of data  |
| <b>Anne De Saint-Martin, MD</b> | Service de Neuropédiatrie, Hôpital de Haute-pierre, Strasbourg, France  | Major role in the acquisition of data  |
| <b>Diane Doummar, MD</b>        | Sorbonne Université, Service de Neuropédiatrie-Pathologie du développement, Hôpital Trousseau AP-HP.SU, FHU I2D2, Paris, France   | Major role in the acquisition of data  |
| <b>Nouha Essid, MD</b>          | Service de Neurologie et Réanimation Pédiatrique, APHP, Hôpital Raymond Poincaré, Garches, France   | Major role in the acquisition of data  |

## Appendix 1 (continued)

| Name                                   | Location  | Contribution   |
|--|---|--|
| <b>Alexa Garros, MD</b>                | Service de Neurologie Pédiatrique, Hôpital Nord, Grenoble, France   | Major role in the acquisition of data  |
| <b>Caroline Hachon Le Camus, MD</b>    | Service de Neurologie Pédiatrique, et Unité de recherche clinique, module plurithématique sous axe pédiatrique CI 1436, Hôpital des enfants, CHU Toulouse, Toulouse, France | Major role in the acquisition of data  |
| <b>Celia Hoebeke, MD</b>               | Service de Neurologie Pédiatrique, Hôpital La Timone, Assistance-Publique Hôpitaux de Marseille, France   | Major role in the acquisition of data  |
| <b>Sylvie Nguyen The Tich, MD, PhD</b> | Service de Neuropédiatrie, CRM R Epilepsies Rares, Hôpital Roger Salengro, Lille, France  | Major role in the acquisition of data  |
| <b>Maximilien Perivier, MD</b>         | Service de Neuropédiatrie et handicaps, Hôpital pédiatrique Gatien de Clocheville, CHU de Tours, Tours, France  | Major role in the acquisition of data  |
| <b>Serge Rivera, MD</b>                | Pole Mère Enfant, Centre Hospitalier de la Côte Basque, Bayonne, France   | Major role in the acquisition of data  |
| <b>Anne Rolland, MD</b>                | Service de Neuropédiatrie, Hôpital Mère-Enfant, Nantes, France  | Major role in the acquisition of data  |
| <b>Agathe Roubertie, MD, PhD</b>       | INM, Univ Montpellier, INSERM U 1298, CHU Montpellier, Département de Neuropédiatrie, Centre d'investigation clinique Inserm, CIC1411, Montpellier, France                  | Major role in the acquisition of data  |
| <b>Catherine Sarret, MD, PhD</b>       | Service de Pédiatrie, Hôpital Estaing, CHU Clermont-Ferrand, Clermont-Ferrand, France   | Major role in the acquisition of data  |
| <b>Caroline Sevin, MD</b>              | Service de Neurologie Pédiatrique, Hôpital Bicêtre, Assistance-Publique Hôpitaux de Paris, France   | Major role in the acquisition of data  |
| <b>Dorothee Ville, MD</b>              | Service de Neurologie Pédiatrique, Hôpital Femme Mère Enfant, Centre Hospitalier de Lyon, France  | Major role in the acquisition of data  |
| <b>Marc Sitbon, PhD</b>                | Institut de Génétique Moléculaire de Montpellier, Univ. Montpellier, CNRS, Montpellier, France  | Major role in the acquisition of data; analysis or interpretation of data              |
| <b>Jean-Marc Costa, PharmD</b>         | Laboratoire Cerba, Saint-Ouen l'Aumône, France  | Major role in the acquisition of data; analysis or interpretation of data              |
| <b>Roser Pons, MD, PhD</b>             | Department of Pediatrics, Aghia Sofia Hospital, University of Athens, Athens, Greece  | Drafting/revision of the manuscript for content, including medical writing for content |

## Appendix 1 (continued)

| Name                                  | Location  | Contribution   |
|---------------------------------------|---|--|
| <b>Angels Garcia-Cazorla, MD, PhD</b> | Department of Neurology, Hospital Sant Joan de Déu, Barcelona, Spain  | Drafting/revision of the manuscript for content, including medical writing for content   |
| <b>Sandrine Vuillaumier, PhD</b>      | Service de Biochimie et Génétique, Hôpital Bichat Claude Bernard, APHP, Paris, France   | Drafting/revision of the manuscript for content, including medical writing for content; major role in the acquisition of data; analysis or interpretation of data                          |
| <b>Vincent Petit, PhD</b>             | Metafora Biosystems, Paris, France  | Drafting/revision of the manuscript for content, including medical writing for content; Study concept or design  |
| <b>Odile Boesflug-Tanguy, MD, PhD</b> | CRMR Leukofrance service de neuropédiatrie Hôpital Robert Debré AP-HP Paris France; UMR1141 Neurodiderot Université de Paris Paris France | Drafting/revision of the manuscript for content, including medical writing for content; major role in the acquisition of data; study concept or design; analysis or interpretation of data |
| <b>Darryl C. De Vivo, MD</b>          | Department of Pediatrics, Columbia University Irving Medical Center, NY   | Drafting/revision of the manuscript for content, including medical writing for content; analysis or interpretation of data   |

## Appendix 2 Coinvestigators

Coinvestigators are listed at [links.lww.com/WNL/C767](https://links.lww.com/WNL/C767).

## References

- Leen WG, Klepper J, Verbeek MM, et al. Glucose transporter-1 deficiency syndrome: the expanding clinical and genetic spectrum of a treatable disorder. *Brain*. 2010; 133(3):655-670. doi: 10.1093/brain/awp336
- Pons R, Collins A, Rotstein M, Engelstad K, De Vivo DC. The spectrum of movement disorders in Glut-1 deficiency. *Mov Disord*. 2010;25(3):275-281. doi: 10.1002/mds.22808
- Gras D, Roze E, Caillet S, et al. GLUT1 deficiency syndrome: an update. *Revue Neurologique*. 2014;170(2):91-99. doi: 10.1016/j.neurol.2013.09.005
- Hao J, Kelly DI, Su J, Pascual JM. Clinical aspects of glucose transporter type 1 deficiency: information from a global registry. *JAMA Neurol*. 2017;74(6):727-732. doi: 10.1001/jamaneurol.2017.0298
- De Vivo DC, Trifiletti RR, Jacobson RI, Ronen GM, Behmand RA, Harik SI. Defective glucose transport across the blood-brain barrier as a cause of persistent hypoglycorrhachia, seizures, and developmental delay. *N Engl J Med*. 1991;325(10):703-709. doi: 10.1056/NEJM199109053251006
- Schwantje M, Verhagen LM, Hasselt PM, Fuchs SA. Glucose transporter type 1 deficiency syndrome and the ketogenic diet. *J Inherit Metab Dis*. 2020;43(2):216-222. doi: 10.1002/jimd.12175
- Hainque E, Gras D, Meneret A, et al. Long-term follow-up in an open-label trial of triheptanoin in GLUT1 deficiency syndrome: a sustained dramatic effect. *J Neurol Neurosurg Psychiatry*. 2019;90(11):1291-1293. doi: 10.1136/jnnp-2018-320283
- Symonds JD, Zuberi SM, Stewart K, et al. Incidence and phenotypes of childhood-onset genetic epilepsies: a prospective population-based national cohort. *Brain*. 2019; 142(8):2303-2318. doi: 10.1093/brain/awz195
- Hu Q, Shen Y, Su T, Liu Y, Xu S. Clinical and genetic characteristics of Chinese children with GLUT1 deficiency syndrome: case report and literature review. *Front Genet*. 2021;12:734481. doi: 10.3389/fgene.2021.734481
- Kinet S, Swanson L, Lavanya M, et al. Isolated receptor binding domains of HTLV-1 and HTLV-2 envelopes bind Glut-1 on activated CD4+ and CD8+ T cells. *Retrovirology*. 2007;4(1):31. doi: 10.1186/1742-4690-4-31
- Gras D, Cousin C, Kappeler C, et al. A simple blood test expedites the diagnosis of glucose transporter type 1 deficiency syndrome. *Ann Neurol*. 2017;82(1):133-138. doi: 10.1002/ana.24970
- Christensen RD, Jopling J, Henry E, Wiedmeier SE. The erythrocyte indices of neonates, defined using data from over 12,000 patients in a multihospital health care system. *J Perinatol*. 2008;28(1):24-28. doi: 10.1038/sj.jp.7211852
- Paikari A, Goyal A, Cousin C, Petit V, Sheehan VA. Association between GLUT1 and HbF levels in red blood cells from patients with sickle cell disease. *Blood*. 2019; 134(suppl 1):2265. doi: 10.1182/blood-2019-131058
- Richards S, Aziz N, Bale S, et al. Standards and guidelines for the interpretation of sequence variants: a joint consensus recommendation of the American college of medical genetics and genomics and the association for molecular pathology. *Genet Med*. 2015;17(5):405-424. doi: 10.1038/gim.2015.30
- Montel-Hagen A, Kinet S, Manel N, et al. Erythrocyte Glut1 triggers dehydroascorbic acid uptake in mammals unable to synthesize vitamin C. *Cell*. 2008;132(6): 1039-1048. doi: 10.1016/j.cell.2008.01.042
- Yang H, Wang D, Engelstad K, et al. Glut1 deficiency syndrome and erythrocyte glucose uptake assay. *Ann Neurol*. 2011;70(6):996-1005. doi: 10.1002/ana.22640
- Klepper J, Akman C, Armeno M, et al. Glut1 deficiency syndrome (Glut1DS): state of the art in 2020 and recommendations of the international Glut1DS study group. *Epilepsia Open*. 2020;5(3):354-365. doi: 10.1002/epi4.12414
- Leen WG, Willemsen MA, Wevers RA, Verbeek MM. Cerebrospinal fluid glucose and lactate: age-specific reference values and implications for clinical practice. *PLoS One*. 2012;7(8):e42745. doi: 10.1371/journal.pone.0042745
- Klepper J. GLUT1 deficiency syndrome in clinical practice. *Epilepsy Res*. 2012;100(3): 272-277. doi: 10.1016/j.eplepsyres.2011.02.007
- Akman CI, Yu J, Alter A, Engelstad K, De Vivo DC. Diagnosing glucose transporter 1 deficiency at initial presentation facilitates early treatment. *J Pediatr*. 2016;171: 220-226. doi: 10.1016/j.jpeds.2015.12.030
- Richard Landis J, Koch GG. The measurement of observer agreement for categorical data. *Biometrics*. 1977;33(1):59-174.
- Castellotti B, Ragona F, Freri E, et al. Screening of SLC2A1 in a large cohort of patients suspected for GLUT1 deficiency syndrome: identification of novel variants and associated phenotypes. *J Neurol*. 2019;266(6):1439-1448. doi: 10.1007/s00415-019-09280-6
- Larsen J, Johannesen KM, Ek J, et al. The role of SLC2A1 mutations in myoclonic astatic epilepsy and absence epilepsy, and the estimated frequency of GLUT1 deficiency syndrome. *Epilepsia*. 2015;56(12):e203-e208. doi: 10.1111/epi.13222
- Manel N, Kim FJ, Kinet S, Taylor N, Sitbon M, Battini JL. The ubiquitous glucose transporter GLUT-1 is a receptor for HTLV. *Cell*. 2003;115(4):449-459. doi: 10.1016/s0092-8674(03)00881-x
- Kramer J, Smith L. Ketogenic diet in glut 1 deficiency through the life cycle: pregnancy to neonate to preschooler. *Child Neurol Open*. 2021;8:2329048X2110346. doi: 10.1177/2329048X211034655
- Hirsch E, French J, Scheffer IE, et al. ILAE definition of the idiopathic generalized epilepsy syndromes: position statement by the ILAE task force on nosology and definitions. *Epilepsia*. 2022;63(6):1475-1499. doi: 10.1111/epi.17236
- Hully M, Vuillaumier-Barrot S, Le Bizet C, et al. From splitting GLUT1 deficiency syndromes to overlapping phenotypes. *Eur J Med Genet*. 2015;58(9):443-454.
- Wang D, Pascual JM, Yang H, et al. Glut-1 deficiency syndrome: clinical, genetic, and therapeutic aspects. *Ann Neurol*. 2005;57(1):111-118.
- Brockmann K, Wang D, Korenke CG, et al. Autosomal dominant glut-1 deficiency syndrome and familial epilepsy. *Ann Neurol*. 2001;50(4):476-485.
- Pascual JM, Van Heertum RL, Wang D, Engelstad K, De Vivo DC. Imaging the metabolic footprint of Glut1 deficiency on the brain. *Ann Neurol*. 2002;52(4): 458-464.
- Urbizu A, Cuenca-León E, Raspall-Chaure M, et al. Paroxysmal exercise-induced dyskinesia, writer's cramp, migraine with aura and absence epilepsy in twin brothers with a novel SLC2A1 missense mutation. *J Neurol Sci*. 2010;295(1-2):110-113.
- Juozapaitė S, Praninskiene R, Burnyte B, Ambrozaityte L, Skerliene B. Novel mutation in a patient with late onset GLUT1 deficiency syndrome. *Brain Dev*. 2017;39(4): 352-355.
- Weber YG, Storch A, Wuttke TV, et al. GLUT1 mutations are a cause of paroxysmal exertion-induced dyskinesias and induce hemolytic anemia by a cation leak. *J Clin Invest*. 2008;118(6):2157-2168.
- Klepper J, Fischbar J, Vera JC, Wang D, De Vivo DC. GLUT1-deficiency: barbiturates potentiate haploinsufficiency in vitro. *Pediatr Res*. 1999;46(6):677-683.