



**HAL**  
open science

## Electrochemical sensors for animal welfare

Ilaria Sorrentino, Claire Verplanck, Yohann R J Thomas Monday, Amélie  
Revaux

► **To cite this version:**

Ilaria Sorrentino, Claire Verplanck, Yohann R J Thomas Monday, Amélie Revaux. Electrochemical sensors for animal welfare. Eurosensors XXXV Conference, Sep 2023, Lecce, Italy. hal-04347214

**HAL Id: hal-04347214**

**<https://hal.science/hal-04347214>**

Submitted on 15 Dec 2023

**HAL** is a multi-disciplinary open access archive for the deposit and dissemination of scientific research documents, whether they are published or not. The documents may come from teaching and research institutions in France or abroad, or from public or private research centers.

L'archive ouverte pluridisciplinaire **HAL**, est destinée au dépôt et à la diffusion de documents scientifiques de niveau recherche, publiés ou non, émanant des établissements d'enseignement et de recherche français ou étrangers, des laboratoires publics ou privés.



# Electrochemical Sensors for Animal Welfare

*Ilaria Sorrentino, Claire Verplanck and Yohann R.J. Thomas*

Monday, September 11 2023

BIOMEDICAL SENSORS & DIAGNOSTICS I



# CEA : a public research organization



## 4 MAIN RESEARCH AREAS



Defense and national security



Nuclear and renewable energy



Fundamental research



Technology research

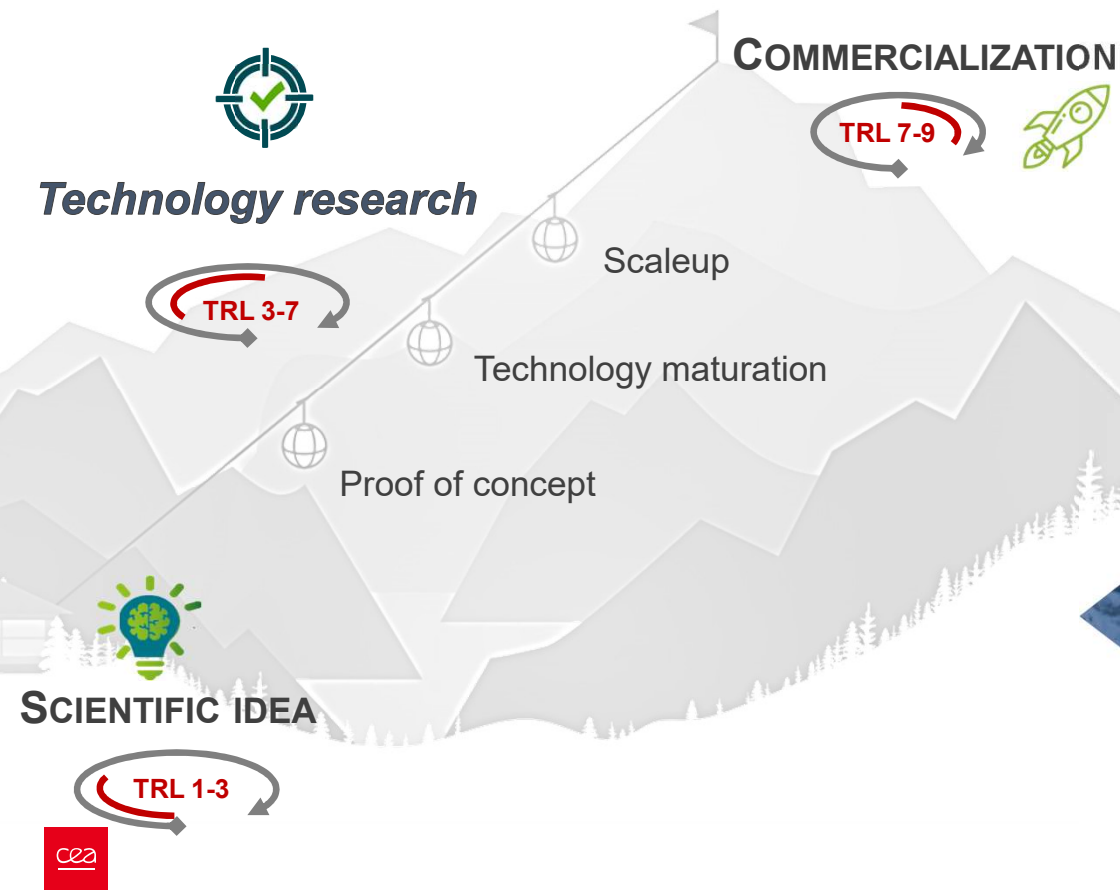


CEA-Leti  
Grenoble

CEA-Leti is one of the 3 technological research institutes of CEA

# Our mission: transfer technology to industry

Connect academic research directly to industrial R&D to catalyze innovation and shorten time-to-market for businesses.





# “3rd Innovative Public Research Organization Worldwide” 2012 -2020

**Derwent™**  
A Clarivate Analytics company



Since **1967**



**2,000** people

**Patents:**



- > 3,000 in portfolio
- 40% under license agreement

**Startups:**



- 68 created for 20 years (75% in activity)
- 3500 jobs created

**Cleanrooms:**



- 500 state-of-the-art equipment in 200 & 300 m<sup>2</sup>
- 10 000 square meters cleanroom

**Budget:**



- 315 M€
- 85% from R&D contracts

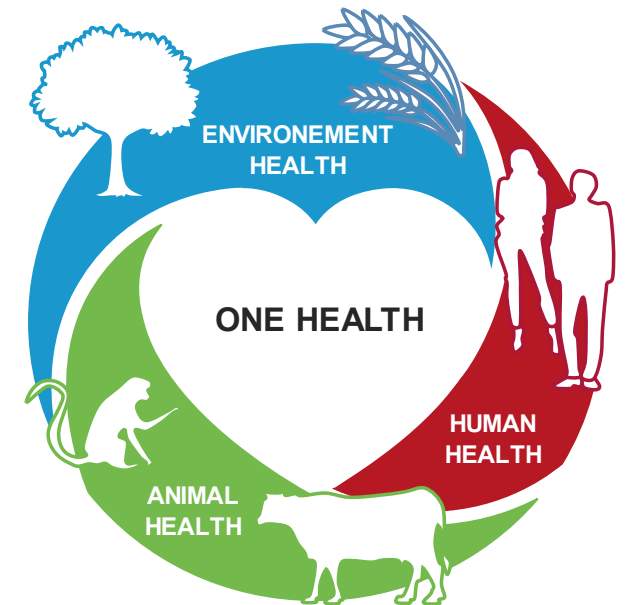
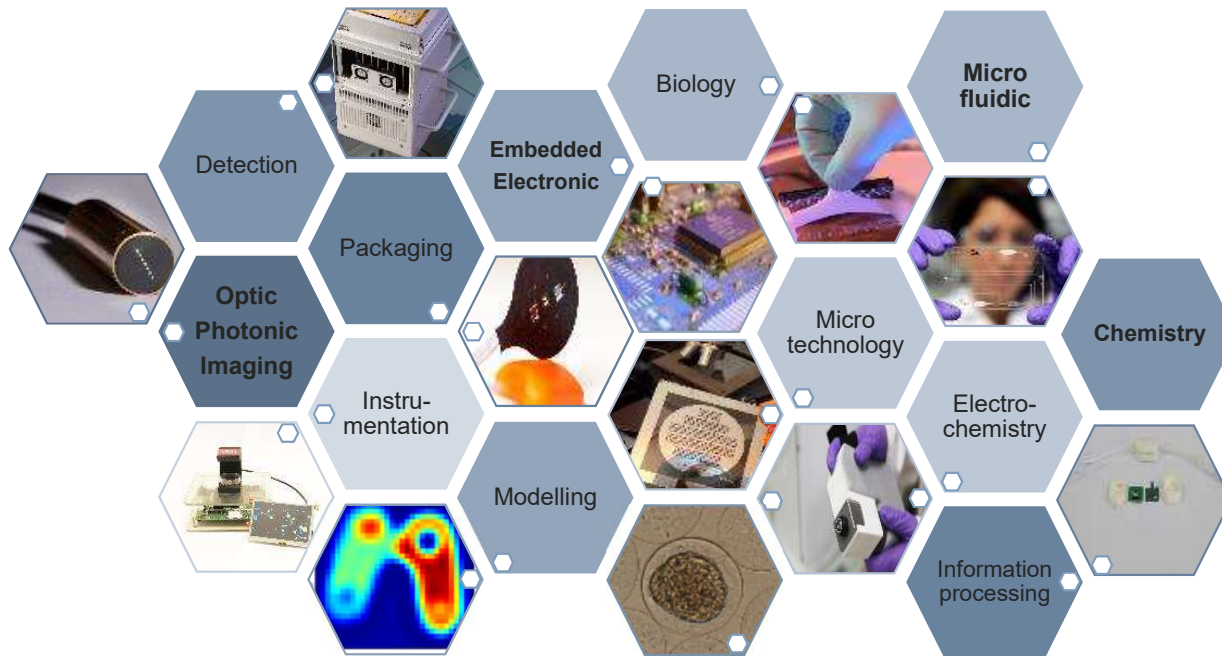


# Leti health

## Mission and Expertise

*Address societal needs in the fields of biology, healthcare, environment and security*

*Create & develop innovative solutions for our industrial partners*



*Multidisciplinary teams - One stop shop for completely integrated systems*



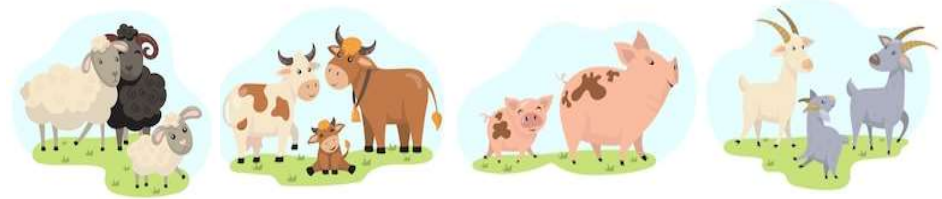


# WAIT4: Welfare Artificial Intelligence and new Technologies for Tracking key indicator Traits in animal facing challenges of the agro-ecological Transition



To be proactive for **animal welfare** (AW), we need to understand their **point of view** and **needs**

**Project goal:** Increasing research-based capacities to quantify and characterize AW in the **agro-ecological (AE)** perspective and revising **farming practices** and **decision-making tools** by considering interactions between the animal and its environment



Source: Website of the Chamber of Agriculture for Animal Welfare (France)











<https://bien-etre-animal.chambres-agriculture.fr>

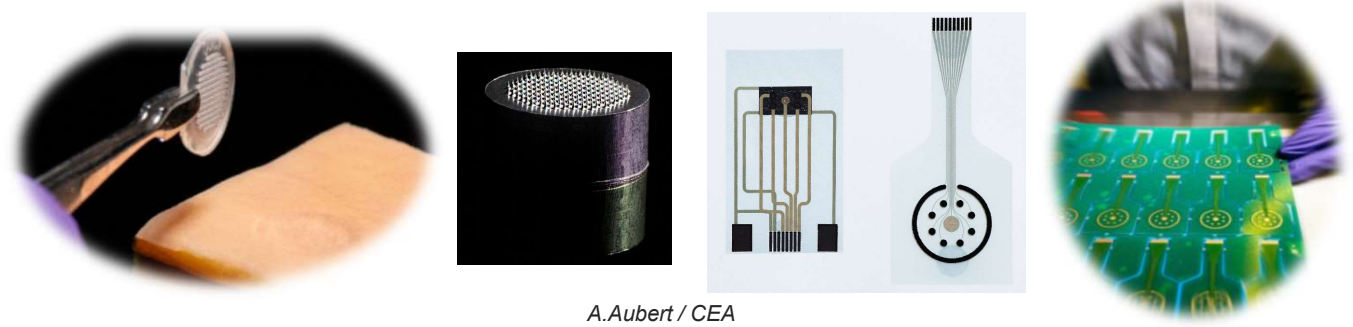


# WAIT4: Welfare Artificial Intelligence and new Technologies for Tracking key indicator Traits in animal facing challenges of the agro-ecological Transition



- WP1: Analysis of interactions between the animal and its environment, using artificial intelligence 
- WP2: Monitoring physiology for acute and mid-term adaptation to stress factors  
- WP3: Determining the impact of agro-ecological transition on animal welfare   
- WP4: Dissemination  

**CEA Objective:** Coupling hydrogel microneedles (MN) to electrochemical sensors in order to develop minimally invasive connected devices for real-time monitoring in animals Interstitial Fluid (ISF)



A.Aubert / CEA

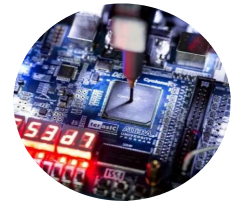
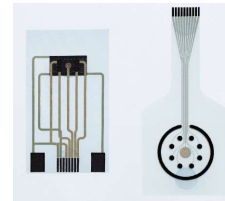
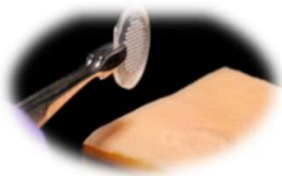




# WAIT4: Welfare Artificial Intelligence and new Technologies for Tracking key indicator Traits in animal facing challenges of the agro-ecological Transition



## WP2- New sensors of animal physiology



### Biomaterials

- Hydrogel formulation
- MN design
- Morphological and structural characterization

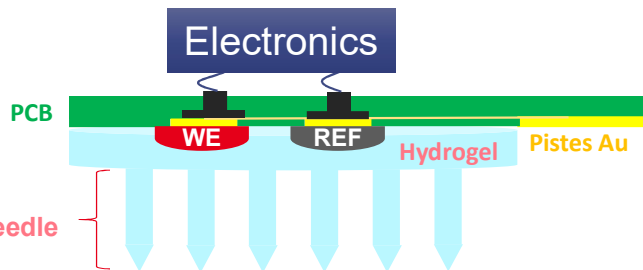
### Electrochemistry

- Formulation ISE ( $\text{Na}^+$ , pH) and REF
- Electrodes Design
- Calibration test on simple model solutions, complex and ISF sampling

### Electronics

- Set up communication protocol
- collect data
- send data

### Integration



- ✓ Sampling ISF (MN)
- ✓ Measuring in real time (Electrochemical sensors)
- ✓ Reporting data (Electronics)



# WAIT4: Physiological variables of interest



**Na<sup>+</sup> and pH:** concentration range (sensitivity & accuracy)

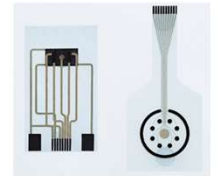
- **pH:** variation between 7.35 and 7.50 in blood (in cows)  
Desired sensitivity range 0.03 to 0.05 pH point
  - $\Delta E$  over full range < 9 mV
  - Sensitivity range < 3 mV
- **Na<sup>+</sup>** – cow and sow in plasma: 130-145 mmol/L  
Desired sensitivity range < 4-5 mmol/L
  - $\Delta E$  over full range < 3 mV
  - Sensitivity range < 1 mV



Very low values at the limit of possible detection



# Electrochemical sensors



## ADVANTAGES

**Multiparametric measurements with one platform**

**Ions:**  
Na<sup>+</sup>, K<sup>+</sup>, Ca<sup>2+</sup>, Mg<sup>2+</sup>,  
pH, NH<sub>4</sub><sup>+</sup>, NO<sub>3</sub><sup>-</sup>, Cl<sup>-</sup>  
...

**Metabolites:**  
glucose, lactate,  
NO...

**Conductivity**

**Complex fluids**

**Biological:**  
sweat, blood, plasma,  
...

**Aqueous:**  
Drinking water, rivers,  
swimming pools, ...

**Industrial**

**Adaptable to different substrates**

**Materials:**  
Silicon, polymers,  
papers, fabrics, ...

**Properties:**  
Flexible, stretchable,  
wearable, ...

**Fabrication processes adapted, collective**

**Other advantages**

**Continuous measurements**

**Miniaturization**

**Biocompatibility**

**Cytotoxicity**

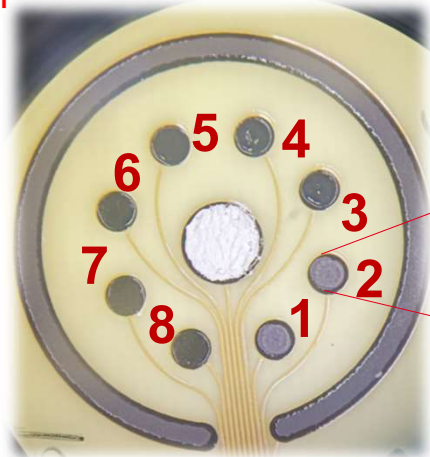
**Platform adapted to the application**



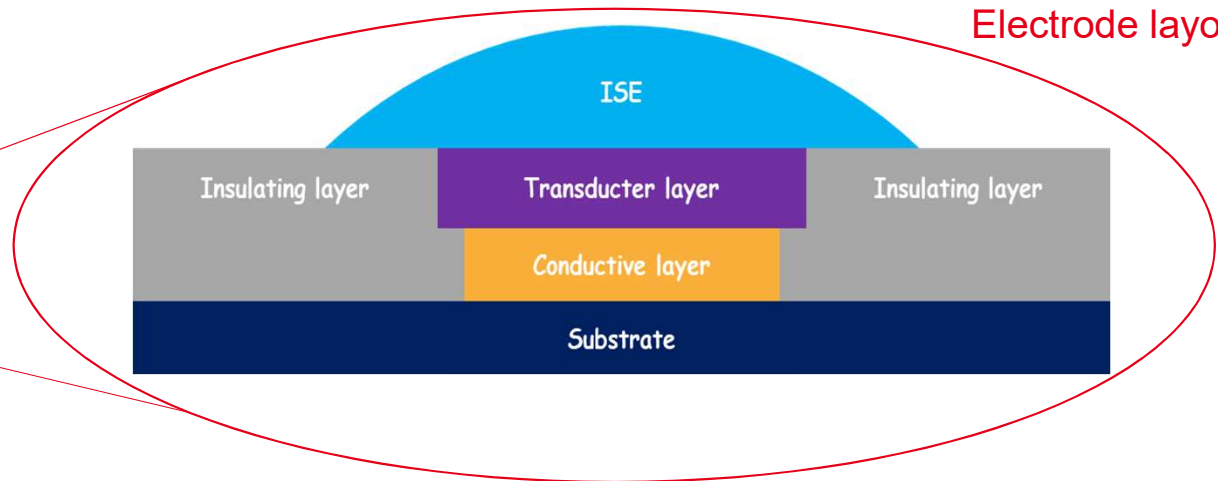
# WAIT4: Electrochemical Sensors

Multi-parameter electrochemical platform for monitoring physiological variables of interest like sodium, potassium and pH in **animals Interstitial Fluid (ISF)**

Multi-parameter electrochemical platform

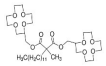


Electrode layout

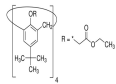


## ➤ Na<sup>+</sup>:

➤ Ion Selective Electrode (ISE) :3 ionophores



*Ionophore Na VI*



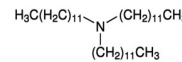
*Ionophore Na X*



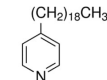
*Ionophore Na IV*

## ➤ pH :

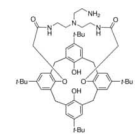
➤ Iridium Oxide: IrOx  
 ➤ ISE: 3 ionophores pH



*Hydrogen Ionophore I*



*Hydrogen Ionophore II*



*Hydrogen Ionophore V*

# Biosensor development - Experimental section

1. Sensing  $\text{Na}^+$



2. Sensing pH

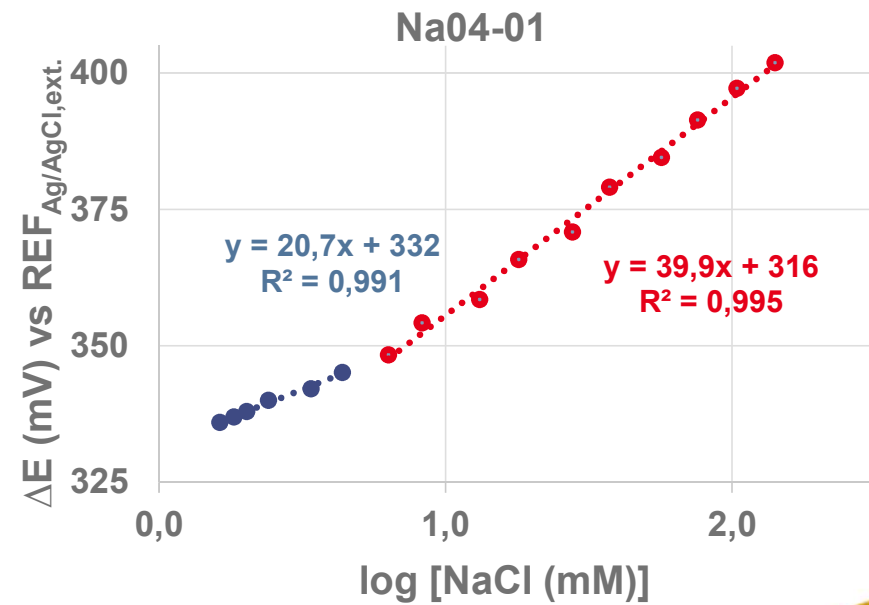
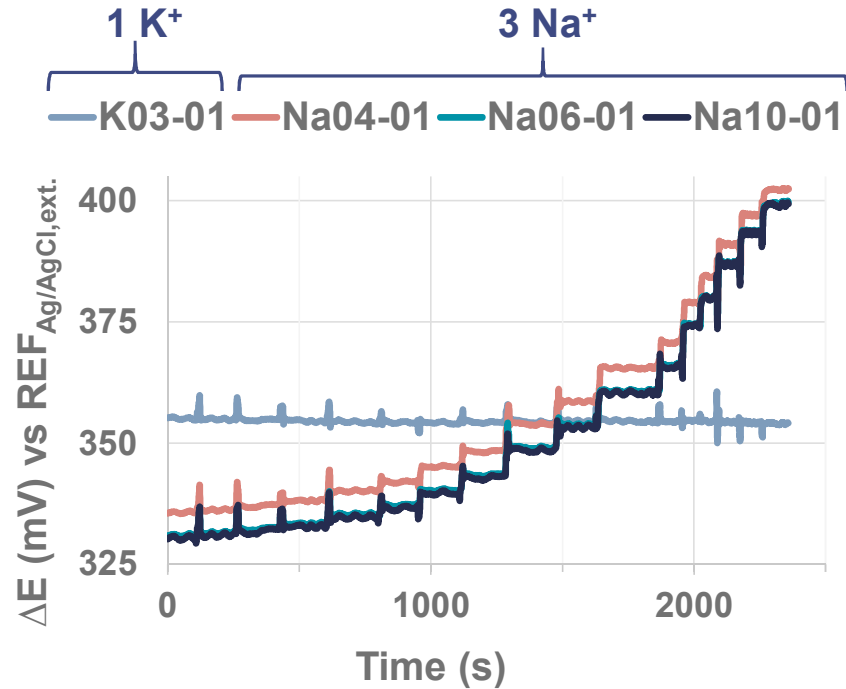
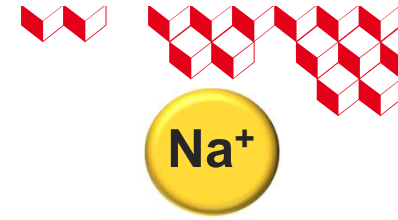


3. Multiparameter platform – Interference such as  $\text{K}^+$



# 1. Sensing Na<sup>+</sup>

Method of standard additions in complex buffer pH = 7,4



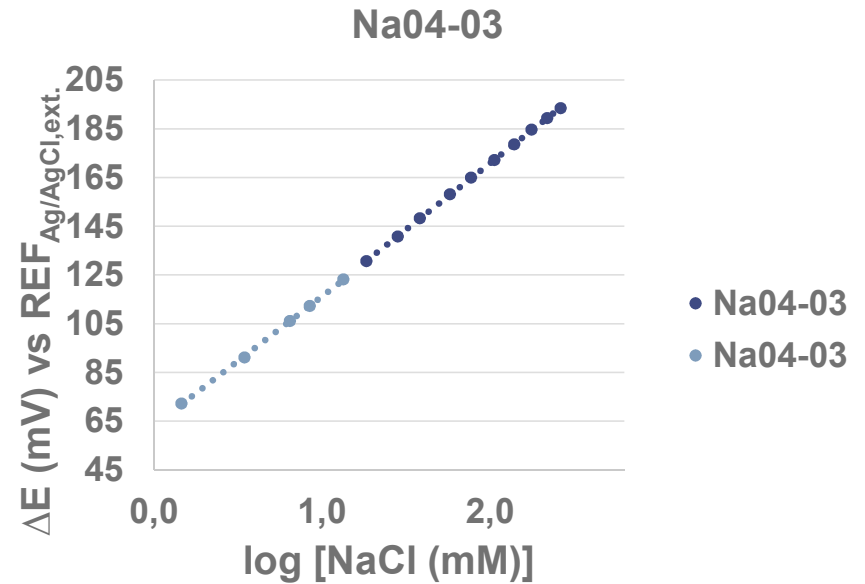
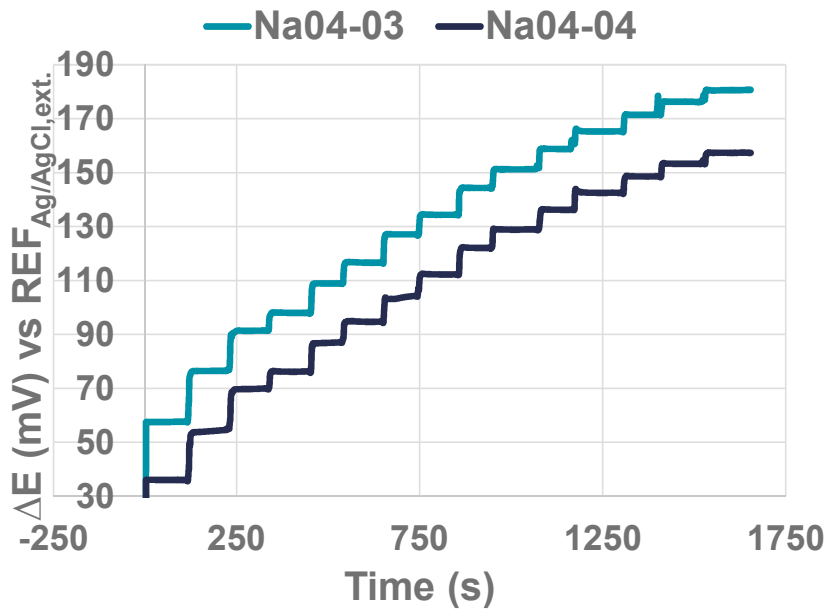
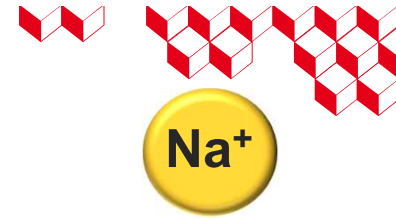
ISE	Na04-01
S (mV/dec)	39,9
R <sup>2</sup>	0,995
E <sub>0</sub> (mV)	315,6

Linearity between 6mM et 150mM



# 1. Sensing Na<sup>+</sup> - New formulations

Method of standard additions in complex buffer pH = 7,4



ISE	Na04-03	Na04-04
S (mV/dec)	55,0	54,4
R <sup>2</sup>	0,999	0,999
E <sub>0</sub> (mV)	46,8	27,1

linearity over the whole range (1.5mM-260mM)

The new ISE Na<sup>+</sup> formulations show improved sensitivity and a lower LOD

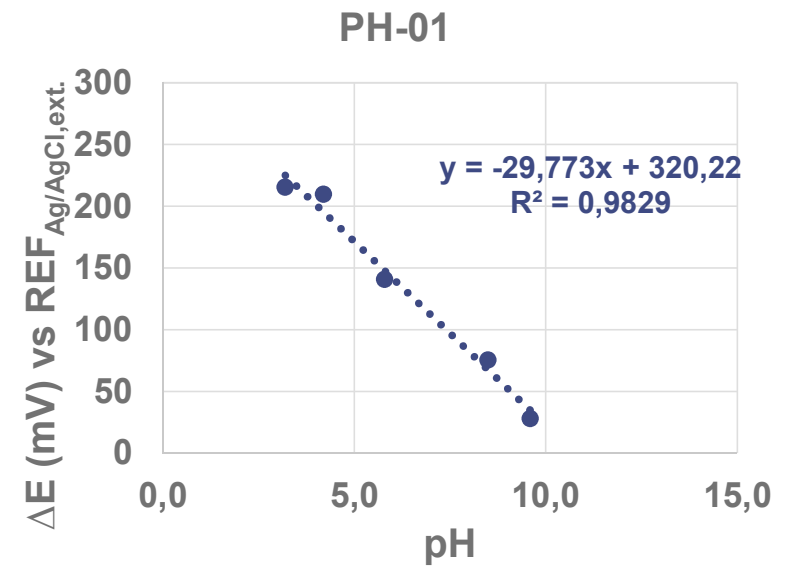
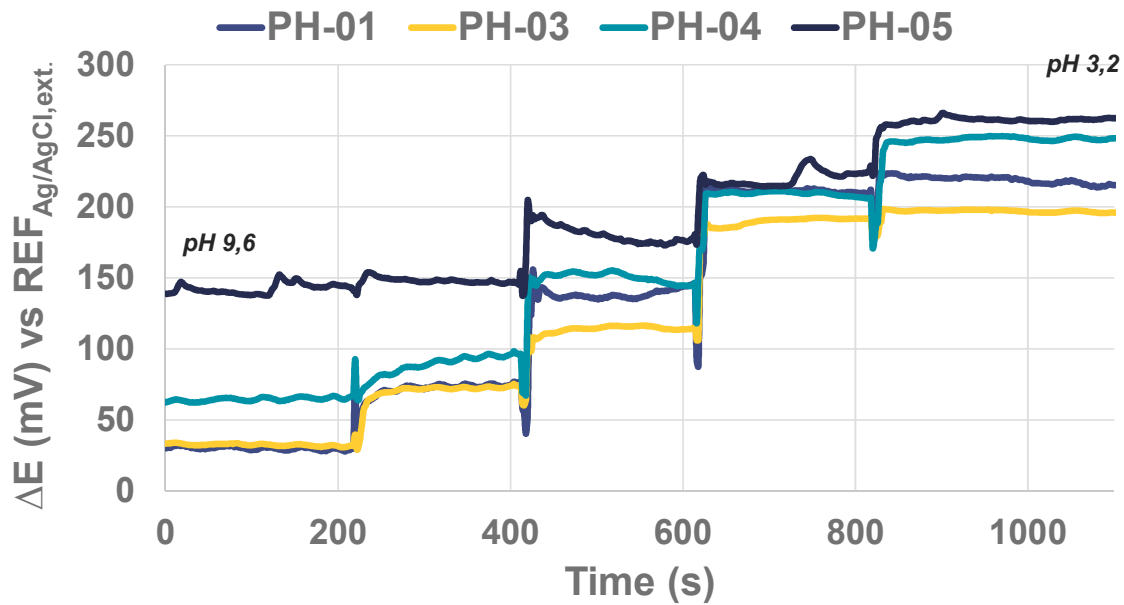
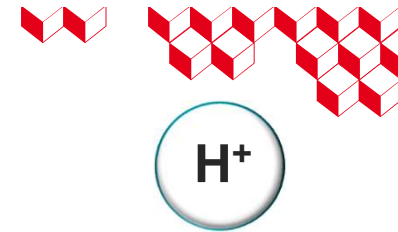




# 2. Sensing pH

Method of standard additions in complex buffer

Range pH:9-8-5-4-3 (+Aj Lactic acid)



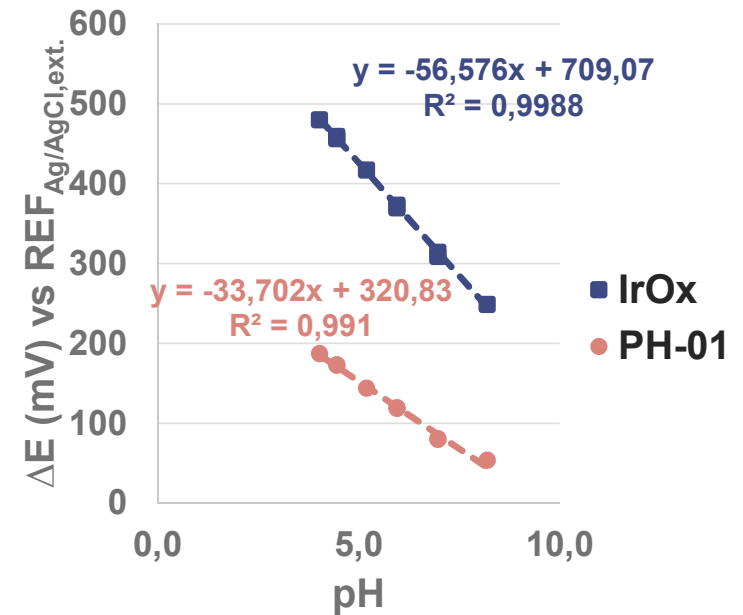
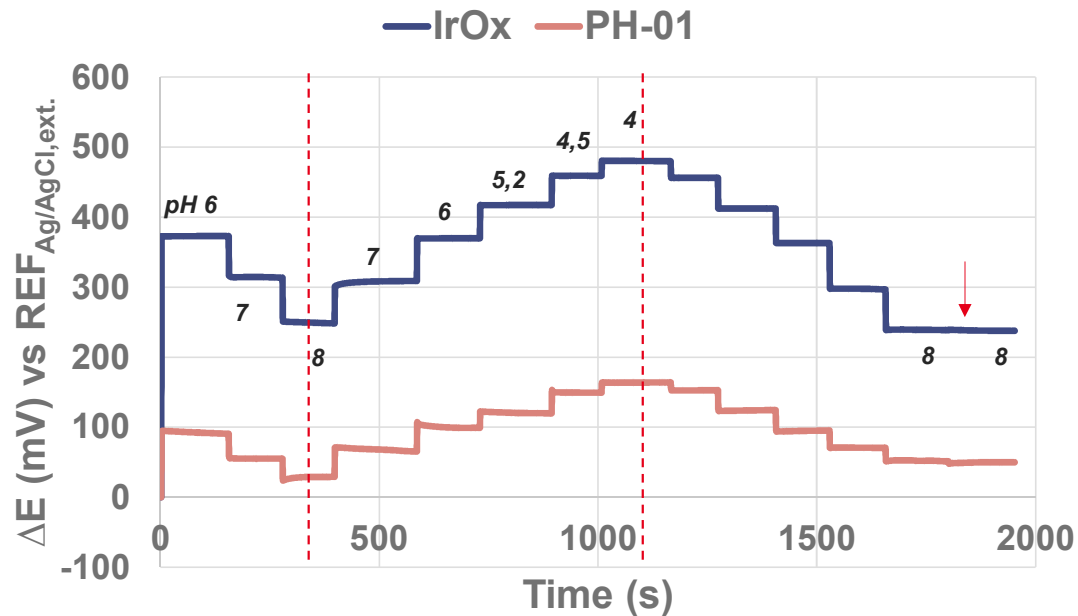
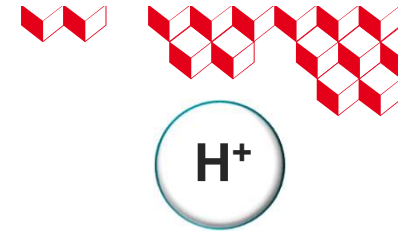
ISE	PH-01
S (mV/dec)	-29,8
R <sup>2</sup>	0,983
E <sub>0</sub> (mV)	320,2

**Not yet as sensitive as expected, needs to be optimised**



## 2. Sensing pH

Method of standard additions in complex buffer Range pH:4->8 (+Aj Lactic acid)



ISE	PH-01	IrOx
S (mV/dec)	-33,7	-56,6
R <sup>2</sup>	0,991	0,999
E <sub>0</sub> (mV)	320,2	709,4

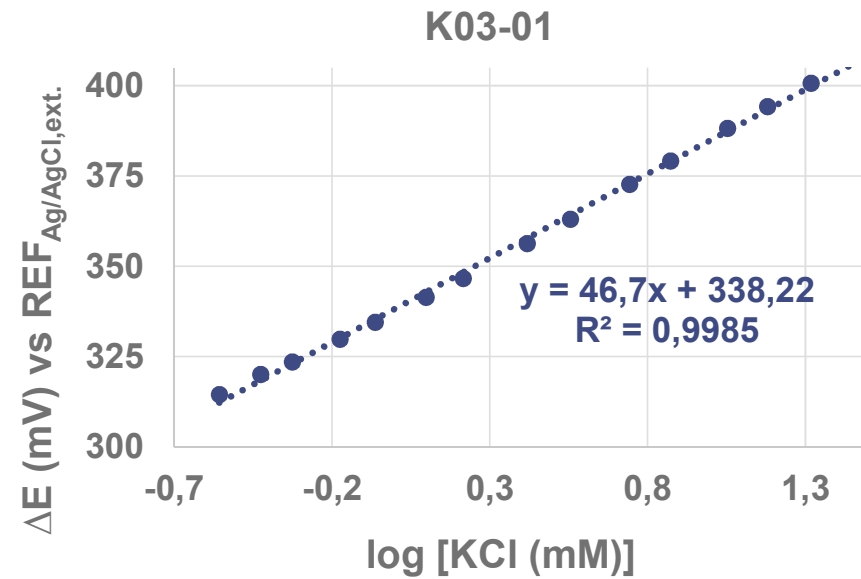
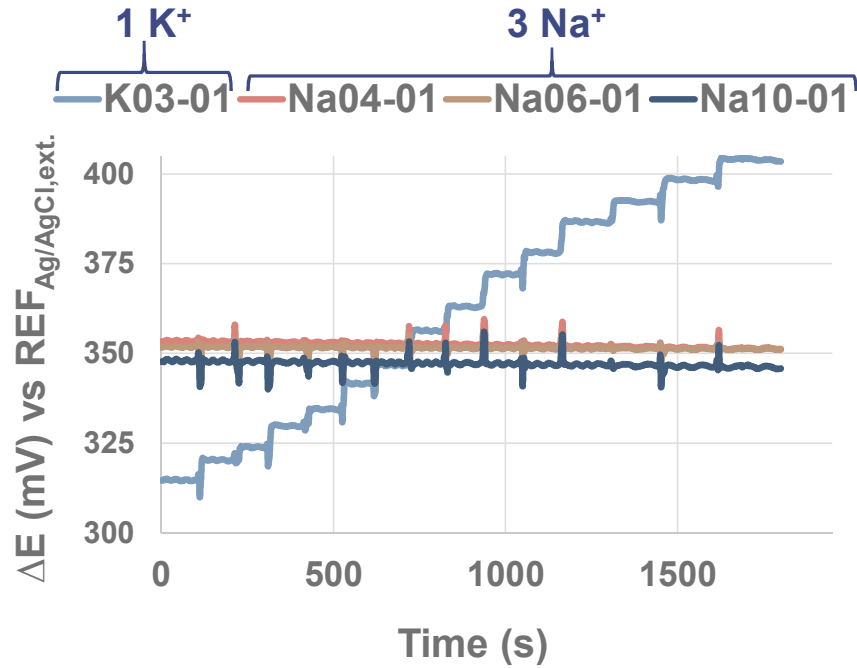
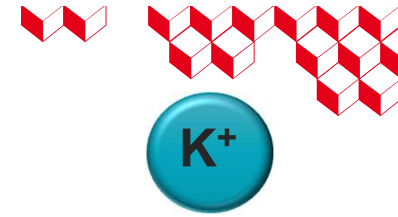
Comparing pH sensors IrOx and ISE (PH-01)

**IrOx shows higher sensitivity and stability** than ISE under the same conditions.



# 3. Interference - Sensing K<sup>+</sup>

Method of standard additions in complex buffer pH = 7,4

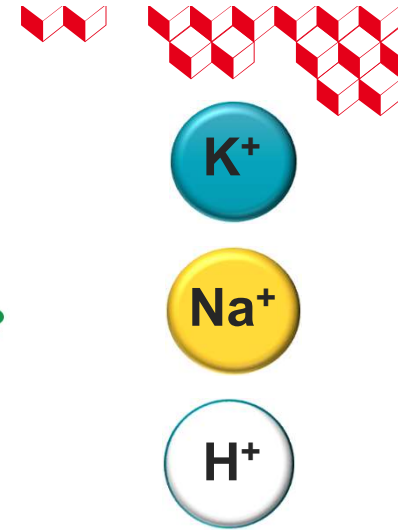
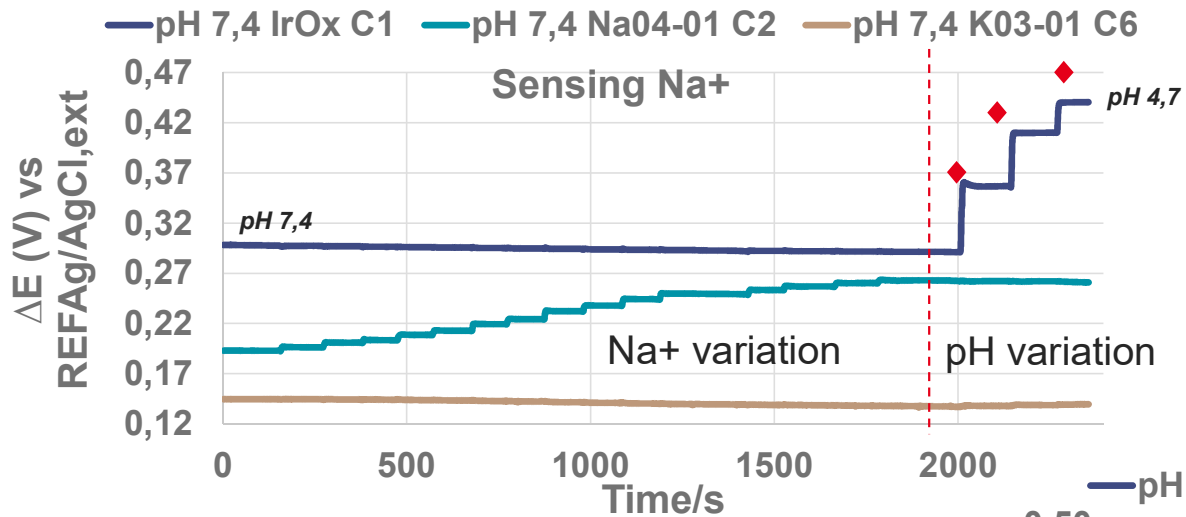


ISE	K03-01
S (mV/dec)	46,7
R <sup>2</sup>	0,998
E <sub>0</sub> (mV)	338,2

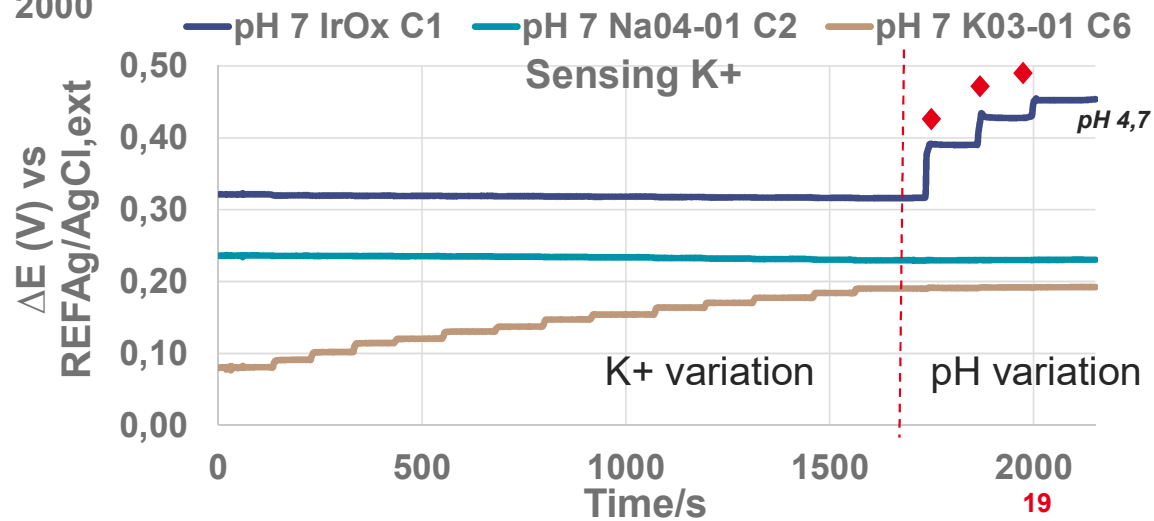
Linearity between 0,2mM et 28mM



## 2. Interference - Multiparameter platform



In multisensor experiments, **no interference** was observed between the detection of pH/K<sup>+</sup>/Na<sup>+</sup>



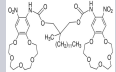
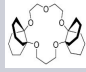
# Conclusions



In this study, we demonstrate that applying **our design** and **our fabrication strategy** of this platform enables the detection of **multiple parameters** involved in the **animal stress**



Multi-parameter electrochemical platform validation

Capteur	pH	K <sup>+</sup>	Na <sup>+</sup>
Formulation	IrOx	 <i>Ionophore K III</i>	 <i>Ionophore Na IV</i>



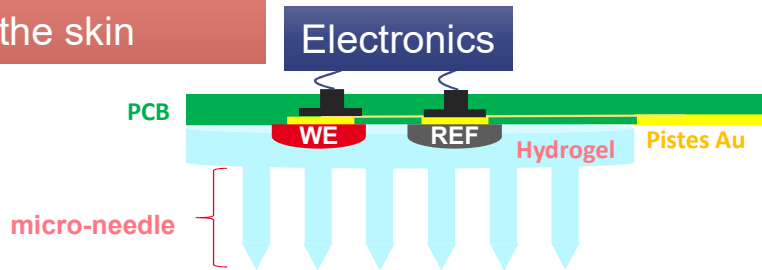
These are the first promising results of **potentiometric electrochemical detection** of Na<sup>+</sup>, pH and K<sup>+</sup> in **artificial ISFs**

# Future perspectives / challenges

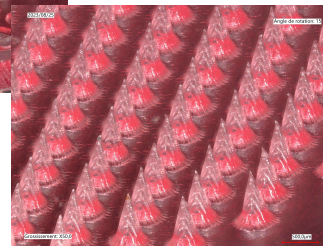
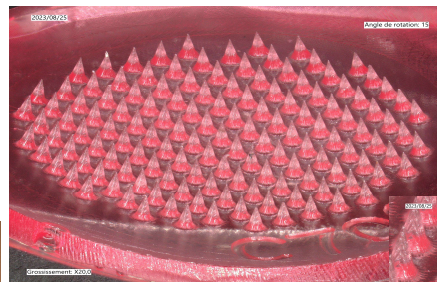
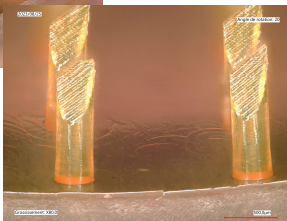
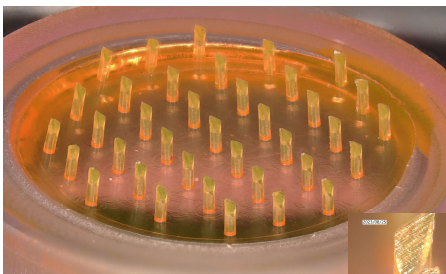
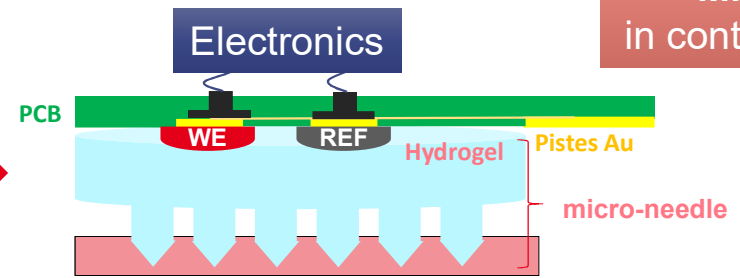
The next step will be the **integration** of **electrochemical platform** with the **micro-needle patches** to perform measurements of physiological parameters **minimally invasive** for the animals



Insertion of the dry MN patch in/onto the skin

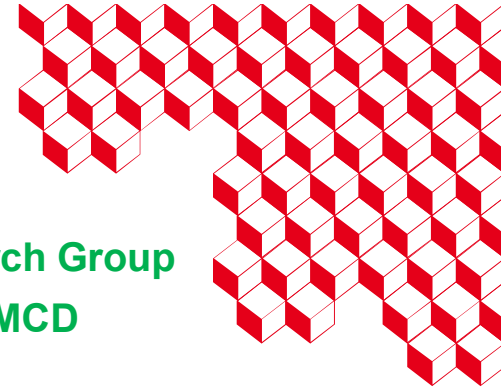


Swelling of the MN patch in contact with ISF





Research Group  
LMCD



*Merci*



This work was supported by a French government grant managed by the **Agence Nationale de la Recherche** under the **France 2030** program, reference ANR 22 PEA 0008

### WAIT4 institutional consortium



CEA-Leti, Grenoble, France

[cea-leti.com](http://cea-leti.com)

[ilaria.sorrentino@cea.fr](mailto:ilaria.sorrentino@cea.fr)

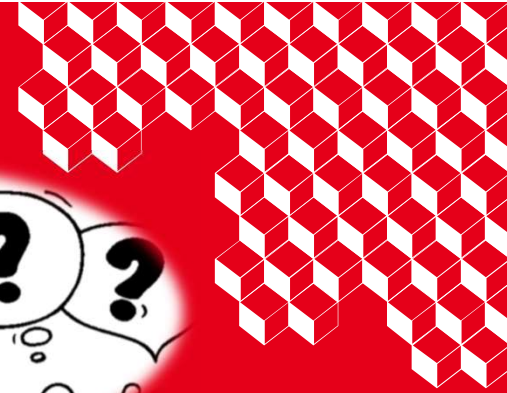
T. + 33 (0)4 38 78 24 17





leti

Q&A



**Ilaria Sorrentino**

**Electrochemical engineer**  
**CEA-Leti, Grenoble, France**

[ilaria.sorrentino@cea.fr](mailto:ilaria.sorrentino@cea.fr)

T. + 33 (0)4 38 78 24 17

***Amélie Revaux***

**Head of research unit**  
[amelie.revaux@cea.fr](mailto:amelie.revaux@cea.fr)

***Claire Verplanck***

**Project manager**  
[claire.verplanck@cea.fr](mailto:claire.verplanck@cea.fr)

