



Bee genome reconstruction through the sequencing of hive products

Kamila Canale Tabet, Elisa Simon, Emmanuelle Labarthe, Emilien Rottier,
Benjamin B. Basso, Fanny Mondet, Alain Vignal, Thibault Leroy

► To cite this version:

Kamila Canale Tabet, Elisa Simon, Emmanuelle Labarthe, Emilien Rottier, Benjamin B. Basso, et al.. Bee genome reconstruction through the sequencing of hive products. Apimondia 2023, Sep 2023, Santiago, Chile. hal-04338919

HAL Id: hal-04338919

<https://hal.science/hal-04338919>

Submitted on 12 Dec 2023

HAL is a multi-disciplinary open access archive for the deposit and dissemination of scientific research documents, whether they are published or not. The documents may come from teaching and research institutions in France or abroad, or from public or private research centers.

L'archive ouverte pluridisciplinaire **HAL**, est destinée au dépôt et à la diffusion de documents scientifiques de niveau recherche, publiés ou non, émanant des établissements d'enseignement et de recherche français ou étrangers, des laboratoires publics ou privés.

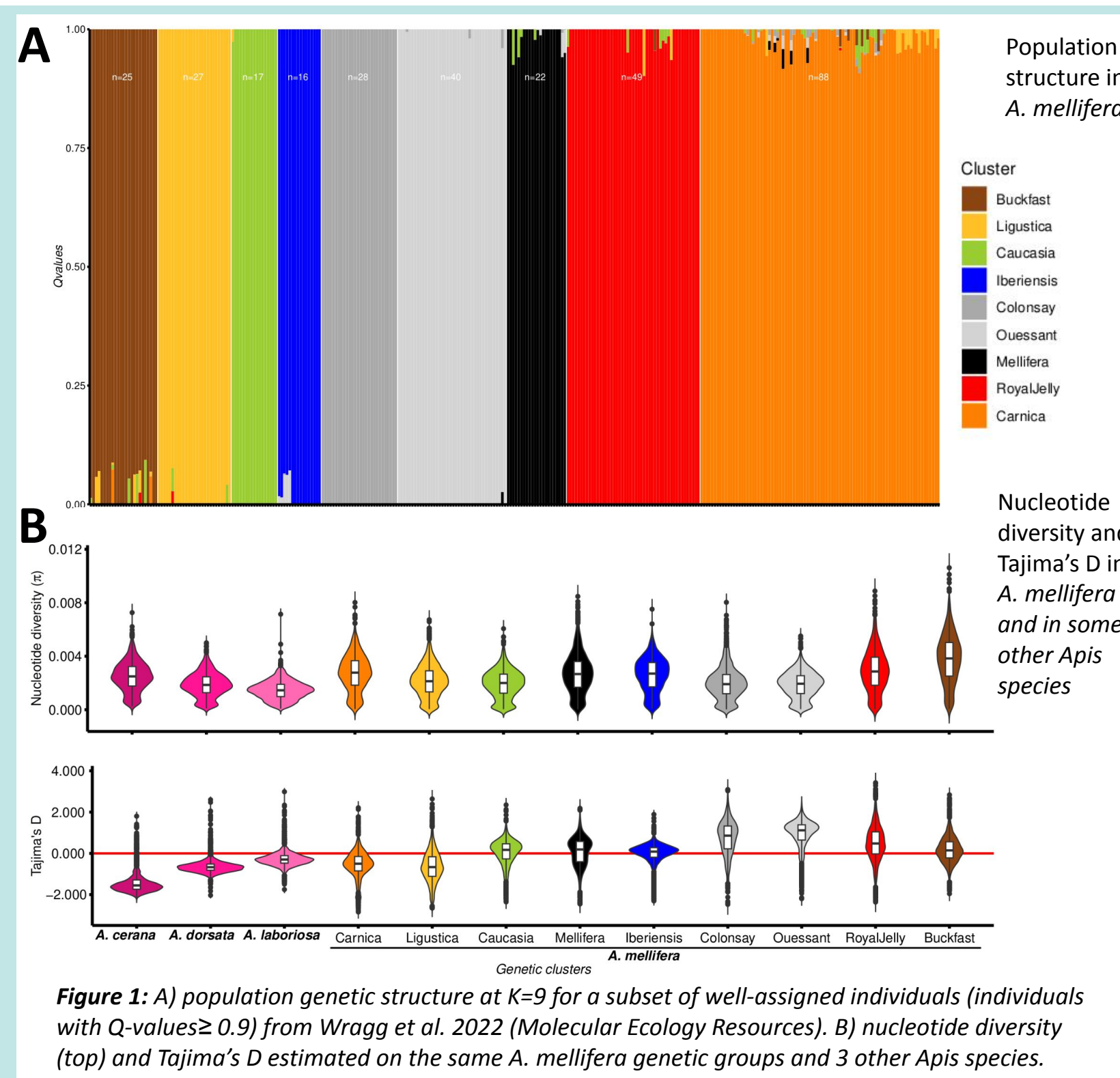
Bee genome reconstruction through the sequencing of hive products

Kamila Canale-Tabet¹ Elisa Simon¹, Emmanuelle Labarthe¹, Emilien Rottier², Benjamin Basso², Fanny Mondet², Alain Vignal¹, Thibault Leroy¹
¹ GenPhySE, INRAE, INP, ENVT, Université de Toulouse, Castanet-Tolosan, France
² INRAE, UR 406 Abeilles et Environnement, UMT PrADE, Avignon, France

BACKGROUND

Our research team located at INRAE in Toulouse, France specializes in the **description of the genetic diversity** of honey bees.

During the last decade, we have put considerable effort into **collecting and whole genome sequencing of hundreds of haploid males** to describe the population structure and diversity in Europe (Fig. 1).



Recently Bovo et al (Scientific Reports, 2020) sequenced **three honey samples** at high coverage allowing access to whole-genome sequences of the contributing honey bees.

These results support highly variable yields among the three samples, with **1 to 65% of reads effectively corresponding to bee DNA**.

CURRENT LIMITS

The sequencing of drones has many advantages, including a direct access to haplotypes. **Collecting drones however requires regular visits** to the hives, which can be an issue for large regional sampling. In addition, some campaigns could be difficult or **impossible to organize** for practical and/or geopolitical issues.

MAIN QUESTION

Does direct sequencing of honeys represent a good strategy for future large-scale population genomic investigations?

ADVANTAGES

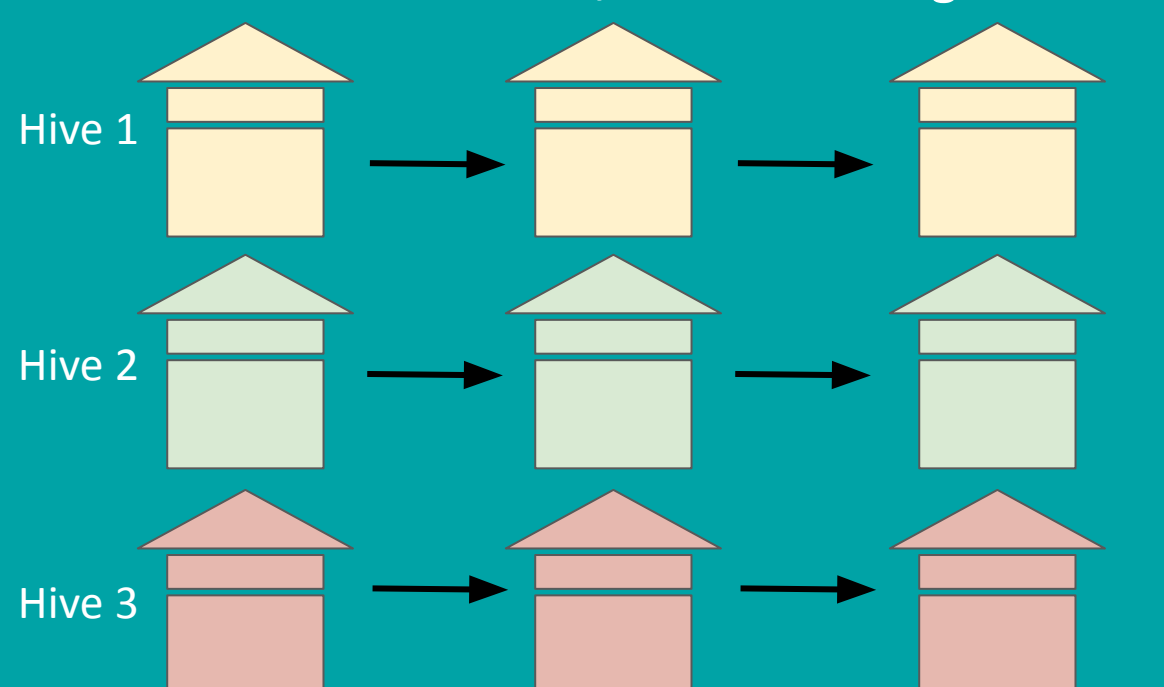
The direct sequencing of honey allows to:

- **Reduce the carbon footprints of our research** (especially associated with the sampling)
- Easy access to many samples given the importance of the honey market across the globe
- **Non-lethal sampling**
- **Access to some other genetic information** (pollinated plant species, microbiome, Varroa, ...)

PILOT STUDY

Transhumance of beehives

Black locust (*Robinia*) June 2023
 Sweet chestnut (*Castanea*) July 2023
 Lavender (*Lavandula*) August 2023



Comb honey

DNA extraction for each comb honey & QC

- Anonymizing the samples (full-blind study)
- Fine tune a DNA extraction protocol to yield high quality DNA from comb honey and also additional honeypot samples
- Overall DNA quantification using Nanodrop & Picogreen
- Bee DNA (specifically): PCR amplification of two mitochondrial and a nuclear DNA loci

High-throughput DNA sequencing

- First round of sequencing on a MiSeq instrument to estimate the proportion of bee DNA in honey
- Second round of sequencing on a NovaSeq instrument to obtain honey bee whole-genome sequences, after adjusting the sequencing effort to the estimated proportion of bee DNA in the sample (first round)

Data analysis

- Plant DNA: can we recover the origin of the honey using the sequencing reads from the plants?
- Varroa DNA: can we observe an increase of the proportion of varroa parasite sequencing reads during the season?
- Bee DNA: can we precisely discriminate the genetic makeup of the colonies using the reads from the bees present in honey?

PROSPECTS

Our pilot study is part of a larger project (called *Mallaurie*) including 100+ samples, with a larger honey diversity (different geographical origins and plant species, different *A. mellifera* subspecies, Fig. 2). Thanks to this larger diversity, we will perform a **metagenomic analysis of all DNAs present in honey**. This will allow us to propose a potential geographical origin of the honeys by comparing the sequencing results (plants and bees) from honey samples with the genetic structure described above (Fig. 1).



Fig. 2: Diversity of the honey samples to be included in our future investigations for the Mallaurie project (on this picture: honeys from Algeria, India, Nepal, Sweden, ...)

Interested to contribute to our study?

Do not hesitate to provide us a jar of your honey!