



**HAL**  
open science

## Atmospheric correction algorithm over coastal and inland waters based on the red and NIR bands: application to Landsat-8/OLI and VNREDSat-1/NAOMI observations

Dat Dinh Ngoc, Hubert Loisel, Lucile Duforêt-Gaurier, Cedric Jamet, Vincent Vantrepotte, Clemence Goyens, Huy Chu Xuan, Ngoc Nguyen Minh, Thao Nguyen Van

### ► To cite this version:

Dat Dinh Ngoc, Hubert Loisel, Lucile Duforêt-Gaurier, Cedric Jamet, Vincent Vantrepotte, et al.. Atmospheric correction algorithm over coastal and inland waters based on the red and NIR bands: application to Landsat-8/OLI and VNREDSat-1/NAOMI observations. *Optics Express*, 2019, 27 (22), pp.31676-31697. 10.1364/OE.27.031676 . hal-04338031

**HAL Id: hal-04338031**

**<https://hal.science/hal-04338031>**

Submitted on 21 Dec 2023

**HAL** is a multi-disciplinary open access archive for the deposit and dissemination of scientific research documents, whether they are published or not. The documents may come from teaching and research institutions in France or abroad, or from public or private research centers.

L'archive ouverte pluridisciplinaire **HAL**, est destinée au dépôt et à la diffusion de documents scientifiques de niveau recherche, publiés ou non, émanant des établissements d'enseignement et de recherche français ou étrangers, des laboratoires publics ou privés.



Distributed under a Creative Commons Attribution 4.0 International License



# Atmospheric correction algorithm over coastal and inland waters based on the red and NIR bands: application to Landsat-8/OLI and VNREDSat-1/NAOMI observations

DAT DINH NGOC,<sup>1,2,3,\*</sup> HUBERT LOISEL,<sup>1,2,3</sup> LUCILE DUFORÊT-GAURIER,<sup>3</sup> CEDRIC JAMET,<sup>2,3</sup> VINCENT VANTREPOTTE,<sup>2,3</sup> CLEMENCE GOYENS,<sup>4</sup> HUY CHU XUAN,<sup>1</sup> NGOC NGUYEN MINH,<sup>1</sup> AND THAO NGUYEN VAN<sup>5</sup>

<sup>1</sup>Space Technology Institute, Vietnam Academy of Science and Technology, 18 Hoang Quoc Viet, Cau Giay, Hanoi, Vietnam

<sup>2</sup>LOTUS, University of Science and Technology of Hanoi, 18 Hoang Quoc Viet, Cau Giay, Hanoi, Vietnam

<sup>3</sup>Univ. Littoral Côte d'Opale, Univ. Lille, CNRS, UMR 8187, LOG, Laboratoire d'Océanologie et de Géosciences, F 59000 Lille, France

<sup>4</sup>Royal Belgian Institute of Natural Sciences, Vautierstraat 29, 1000 Bruxelles, Belgium

<sup>5</sup>Institute of Marine Environment and Resources, Vietnam Academy of Science and Technology, 246 Da Nang, Ngo Quyen, Haiphong, Vietnam

\*[dndat@sti.vast.vn](mailto:dndat@sti.vast.vn)

**Abstract:** Water pixel extraction and correction of the atmospheric signal represent prerequisite steps prior to applying algorithms dedicated to the assessment of water quality of natural surface water bodies. The recent multiplication of medium spatial resolution sensors (10–60 m) provides the required constellation to monitoring bio-optical and biogeochemical parameters of surface waters at the relevant spatial-temporal scales. Here we present a new approach to identify water pixels and to extract the atmospheric contribution to the top of atmosphere signal measured by the NAOMI sensor on board the first Vietnamese satellite, VNREDSat-1. After verifying the TOA calibration of NAOMI through a vicarious calibration exercise, we adapt a recent water pixel extraction algorithm (WiPE) to NAOMI, and develop a new atmospheric correction algorithm (referred to as red-NIR) based on the use of the red and NIR bands (the only bands available for that purpose on NAOMI) and spectral relationships. The evaluation of red-NIR with a match-up data set gathering remote sensing reflectance,  $R_{rs}$ , measurements performed at the AERONET-OC stations in moderately turbid waters indicates excellent performance in the blue and green part of the spectrum (similar to the performances reached by the SeaDAS NIR-SWIR algorithms) and lower accuracy in the red. Intercomparison of simultaneous images collected by NAOMI and OLI over a more turbid water body shows an excellent agreement between the NAOMI- $R_{rs}$  estimated by the present processing, and the OLI- $R_{rs}$  estimated from the ACOLITE algorithm. This approach will allow sensors that do not have SWIR bands, such as SPOT-6 and -7, to be processed, making their data exploitation available for long-term temporal analyses.

© 2019 Optical Society of America under the terms of the [OSA Open Access Publishing Agreement](#)

## 1. Introduction

The tight societal and economical connections of Vietnam with the sea, mainly due to its 3260 km long coastline, makes this country very sensitive to natural and anthropogenic disasters. Vietnam is one of the countries that will be severely impacted by climate change through the modification of precipitation patterns and sea level rise [1,2]. The abrupt changes occurring in the Mekong Delta area [3–5], the recurrent flooding or pollution events observed in different provinces [6,7], the potential link between water quality and aquaculture activities [8], are,

among others, phenomena stressing the urgent need of a better regional monitoring of coastal and connected inland waters. In that context, satellite remote sensing represents a valuable technique for a better assessment of the status and evolution of Vietnamese coastal and inland waters. While standard ocean color observations provide relevant information about the bio-optical status of surface coastal waters at a daily coverage (in absence of clouds), their spatial resolution (between 300 m and 1 km) may not fully be adapted for the survey of specific areas such as sea harbors, aquaculture areas, industrial and urban coastal areas, and river outlets.

The recent radiometric improvement of medium spatial resolution (from 10 to 60 m) sensors now allows the monitoring of water surface quality at the required spatial resolution [9–16]. However, the relatively low revisit time (between 10 to 16 days under clear days) of these sensors is not adapted to monitor the complex physical and biological interactions occurring in coastal waters. Combining these sensors into a constellation allows the temporal resolution to be greatly increased, and thus the required time-scales to be better covered. For instance, the Sentinel-2 constellation provides a revisit time of 5 days at the equator in cloud-free conditions (instead of 10 days when the two Sentinel-2 are considered separately), and 2.9 days if combined with Landsat-8 [17]. To reduce the impact of cloud coverage on the surface water remote sensing monitoring, it is therefore essential to increase the number of observations. For that purpose, the first multi-spectral optical satellite in Vietnam, VNREDSat-1 has been launched on May 7, 2013. VNREDSat-1 [18] carries the NAOMI (New AstroSat Optical Modular Instrument) sensor [19], which is similar to SPOT-6 and -7, and which includes four multi-spectral bands and one panchromatic band at a spatial resolution of 10 and 2.5 m, respectively (Table 1). In order to use NAOMI images for aquatic applications over coastal and inland waters, water pixels have to be identified, while the top of atmosphere signal recorded by the sensor above these water surfaces has to be corrected from atmospheric effects. This is the objective of the present study.

**Table 1. Landsat-8/OLI and VNREDSat-1/NAOMI spectral bands and spatial resolutions.**

OLI			NAOMI		
Band	Wavelength (nm)	Resolution (m)	Band	Wavelength (nm)	Resolution (m)
1	433 - 453	30			
2	450 - 515	30	1	450 - 520	10
3	525 - 600	30	2	530 - 600	10
4	630 - 680	30	3	620 - 690	10
5	845 - 885	30	4	760 - 890	10
6	1560 - 1660	30			
7	2100 - 2300	30			
8	500 - 680	15	5	450 - 740	2.5
9	1360 - 1390	30			

The extraction of water pixels on NAOMI images is performed in the present study by adapting the recent water pixels extraction algorithm (WiPE) developed for Landsat-8 Operational Land Imager (OLI) and Sentinel-2 Multispectral Instrument (MSI) [20]. Numerous approaches have already been developed to perform atmospheric correction over water pixels delivered by medium spatial resolution sensors observations [9,21–27]. Depending on the number of NIR bands, and the availability of a SWIR band, such as on HSV (SPOT) or ETM+ (Landsat), the atmospheric correction procedures over water surfaces are based on different approaches. First, some directly apply a radiative transfer code such as 6S, combined with external information on the composition of the atmosphere, such as the aerosol optical thickness, the atmospheric profile, and the aerosol model. Others use the combination of radiative transfer calculations (6S) and the black target approach [28], as used by [29]. For the OLI sensor on Landsat-8 or

MSI on Sentinel-2 (A and B) the different existing approaches essentially differ according to the use or not of several near-infrared (NIR) or short-wave infrared (SWIR) bands, and by their inherent assumptions. Different validation exercises have recently been performed to evaluate their respective performances over coastal and inland waters [25,30–33]. However, despite these numerous inter-comparison exercises, a consensus on the best atmospheric correction method over coastal waters has not been reached yet. The purpose of the present paper is to develop a self-consistent (i.e. without any external input on aerosols) atmospheric correction algorithm (referred to as Red-NIR) for NAOMI, which has only one NIR band and no SWIR information. To reduce uncertainties related to the use of various in situ data sets, the performance of the present algorithm is evaluated using the ocean color component of the Aerosol Robotic Network (AERONET-OC) [34]. Because of the very limited number ( $N = 6$ ) of coincident in situ measurements and VNREDSat-1 overpass, the Red-NIR algorithm is applied to OLI which has four spectral bands in common with NAOMI (Table 1), and for which the number of available match-up data points ( $N = 67$ ) is more suitable for a validation exercise. A recent study emphasized that, among two current atmospheric correction algorithms developed for OLI (SeaDASS and ACOLITE), and tested over the AERONET-OC data set (i.e. over moderately turbid waters), SeaDAS performs better [33]. For that purpose, the performance of Red-NIR will be compared to that obtained from atmospheric correction algorithms implemented in SeaDAS and using different band combinations in the NIR and SWIR. The objective is here to show how the Red-NIR algorithm behaves in comparison with similar approaches using SWIR bands, and not to compare to all available atmospheric correction algorithms available for OLI. While the AERONET-OC match-up data set only allows evaluating Red-NIR over moderately turbid waters, the unique scene sampled almost simultaneously by VNREDSat-1 and Landsat-8 over turbid area will be used to assess its performance for higher turbidity levels. For that purpose, the ACOLITE [27] algorithm, which shows relatively good performances over highly turbid waters, will be used.

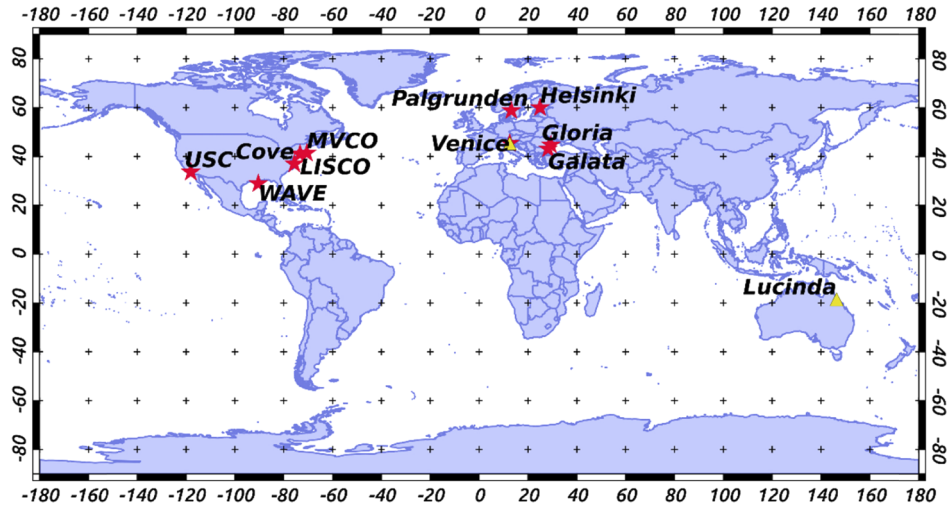
The radiometric in situ data set used in the algorithm development, and the match-up data set used for its validation are first presented. Due to the relatively low contribution of the water leaving radiance to the top of atmosphere (TOA) signal, it is essential to verify the absolute calibration of the sensor for ocean color applications, which has still not been performed for NAOMI over water surfaces. For that purpose, in situ remote sensing reflectance measurements performed at different stations of the AERONET network were propagated through the atmosphere using a radiative transfer code [35], and compared to the TOA reflectance measured by NAOMI. Then, the adaptation and validation of the WiPE algorithm to NAOMI is presented, and the new atmospheric correction method based on the use of the red and NIR bands available on NAOMI is described. Validation as described above is then provided.

## 2. The match-up and in situ data sets

### 2.1. Match-up data set

The match-up data set gathers 67 Landsat-8 scenes collected over 10 Aeronet-OC [34,36–37] stations, and 6 VNREDSat-1 scenes over Venice and Lucinda Aeronet-OC stations (Fig. 1). The Landsat-8 scenes were downloaded from the Glovis portal (<https://glovis.usgs.gov>) of U.S. Geological Survey (USGS), while the VNREDSat-1 scenes were received from the center for control and exploitation of small satellite at the Space Technology Institute (STI) of the Vietnam Academy of Science and Technology (VAST). In situ AERONET-OC [37] radiometric data were collected at three spectral bands centered at 443, 551, and 667 nm. The match-up data selection is based on the same criteria as those applied in [25] for coastal waters and high spatial resolution observations. After application of these match-up criteria 67 and 6 match-up data points remained for Landsat-8 (Table 2) and VNREDSat-1 (Table 3), respectively. This data set gathers relatively clear to eutrophic waters, with 26% of the in situ spectra presenting a maximum

at 443 nm, and 74% at 531 nm. This data set is then characteristic of clear to moderately turbid waters. The wind speed values recorded at the AERONET stations are generally lower than  $5 \text{ m s}^{-1}$ .



**Fig. 1.** AERONET-OC stations selected for validation of the algorithm from Landsat-8/OLI (red stars) and VNREDSat-1/NAOMI (yellow triangles) observations.

**Table 2.** Landsat-8/OLI match-up at Aeronet-OC stations.

AERONET station	Number of match-up	Date
COVE	02	26 <sup>th</sup> Oct, 2014; 16 <sup>th</sup> Dec 2015
Galata	04	21 <sup>st</sup> May, 2014; 10 <sup>th</sup> Sep, 2014; 28 <sup>th</sup> Aug, 2015; 18 <sup>th</sup> Dec, 2015
Gloria	10	2 <sup>nd</sup> May, 2013; 15 <sup>th</sup> Aug, 2013; 13 <sup>th</sup> Jan, 2014; 27 <sup>th</sup> Mar, 2014; 15 <sup>th</sup> Dec, 2014; 24 <sup>th</sup> Dec, 2014; 2 <sup>nd</sup> Jun, 2015; 31 <sup>st</sup> Oct, 2015; 27 <sup>th</sup> Dec, 2015; 19 <sup>th</sup> May, 2016
Helsinki	06	23 <sup>rd</sup> Aug, 2013; 22 <sup>nd</sup> May, 2014; 9 <sup>th</sup> Jul, 2014; 25 <sup>th</sup> May, 2015; 27 <sup>th</sup> May, 2016; 14 <sup>th</sup> Jul, 2016
LISCO	06	30 <sup>th</sup> Sep, 2013; 19 <sup>th</sup> Dec, 2013; 17 <sup>th</sup> Sep, 2014; 23 <sup>rd</sup> Jan, 2015; 30 <sup>th</sup> Mar, 2016; 15 <sup>th</sup> Apr, 2016
MVCO	05	23 <sup>rd</sup> Sep, 2013; 18 <sup>th</sup> Oct, 2013; 3 <sup>rd</sup> Apr, 2014; 30 <sup>th</sup> May, 2014; 6 <sup>th</sup> Jul, 2016
Palgrunden	08	5 <sup>th</sup> Jun, 2013; 23 <sup>rd</sup> Jul, 2013; 8 <sup>th</sup> Jun, 2014; 19 <sup>th</sup> Sep, 2014; 26 <sup>th</sup> May, 2015; 27 <sup>th</sup> Jun, 2015; 4 <sup>th</sup> Jul, 2015; 13 <sup>th</sup> Jun, 2016
USC	04	16 <sup>th</sup> May, 2014; 8 <sup>th</sup> Nov, 2014; 27 <sup>th</sup> Jan, 2015; 12 <sup>th</sup> Feb, 2015;
WAVE	05	19 <sup>th</sup> Jan, 2014; 15 <sup>th</sup> Aug, 2014; 18 <sup>th</sup> Oct, 2014; 19 <sup>th</sup> Nov, 2014; 7 <sup>th</sup> Feb, 2015
Venice	17	31 <sup>st</sup> Oct, 2013; 16 <sup>th</sup> Nov, 2013; 9 <sup>th</sup> Apr, 2014; 16 <sup>th</sup> Apr, 2014; 25 <sup>th</sup> Apr, 2014; 12 <sup>th</sup> Jun, 2014; 6 <sup>th</sup> Aug, 2014; 16 <sup>th</sup> Sep, 2014; 23 <sup>rd</sup> Sep, 2014; 2 <sup>nd</sup> Oct, 2014; 19 <sup>th</sup> Nov, 2014; 18 <sup>th</sup> Mar, 2015; 3 <sup>rd</sup> Apr, 2015; 1 <sup>st</sup> Jul, 2015; 14 <sup>th</sup> Apr, 2016; 7 <sup>th</sup> May, 2016; 19 <sup>th</sup> Jul, 2016

## 2.2. Radiometric in situ data set used for trans-spectral relationships

The atmospheric algorithm developed for VNREDSat-1 in the present study requires the use of spectral relationships between  $R_{rs}(865)$  and  $R_{rs}(655)$ , and  $R_{rs}(655)$  and  $R_{rs}(561)$  (see section 6.2).

**Table 3. VNREDSat-1/NAOMI match-up at Aeronet-OC stations.**

AERONET station	Number of match-up	Date
Lucinda	02	26 <sup>th</sup> Nov, 2016; 1 <sup>st</sup> Dec, 2016
Venice	04	18 <sup>th</sup> Mar, 2015; 23 <sup>rd</sup> Mar, 2015; 29 <sup>th</sup> Nov, 2016; 1 <sup>st</sup> Dec, 2016

For that purpose, a large in situ data-set of remote sensing reflectance has been gathered from radiometric measurements performed in the southern North Sea and English Channel [38,39], the Celtic Sea, the Ligurian Sea, the Adriatic Sea and in the Atlantic Ocean along the coasts of Portugal and French Guiana [40,41]. All measurements were performed using the TriOS-RAMSES hyper-spectral sensors. The measurement protocols and associated processing are fully described in [39] and [42]. This data set covers various optically contrasted coastal waters. While the clearest waters, characterized by a maximum of  $R_{rs}(\lambda)$  in the blue, represent about 39% of the data set, green (with a maximum of  $R_{rs}$  around 561 nm), turbid (maximum of  $R_{rs}$  in the red) and very turbid waters (with a maximum of  $R_{rs}$  at 700 nm) represent about 55.8, 2.4, and 2.8% of the total reflectance spectra, respectively. The suspended particulate matter (estimated based on [38] at 865 nm), SPM, concentration varies between 1.5 and 726.2  $\text{mg}\cdot\text{l}^{-1}$ , with a mean (median) and standard deviation value of  $36.8 (8.2) \pm 87.0 \text{ mg}\cdot\text{l}^{-1}$ .

### 3. Statistical indicators of model performance

Graphical comparisons of observations with model predictions are complemented with quantitative statistical metrics in order to evaluate model performance over the match-up data set. Statistical indicators that are typically utilized in the assessment of atmospheric correction model accuracy [25] are also calculated. These indicators include the root-mean-square difference (Eq. (1)), RMSD, the median percentage difference (Eq. (2)), MPD, and the mean bias (Eq. (3)), MB:

$$RMSD = \sqrt{\frac{\sum_{k=1}^N (R_{rs,Aeronet}^k - R_{rs,OLI}^k)^2}{N}} \quad (1)$$

$$MPD = \text{Median} \left( \left[ \frac{R_{rs,Aeronet}^k - R_{rs,OLI}^k}{R_{rs,Aeronet}^k} \right] 100 \right) \quad (2)$$

$$MB = \frac{\sum_{k=1}^N R_{rs,Aeronet}^k - R_{rs,OLI}^k}{N} \quad (3)$$

where  $k$  is the match-up index, and  $N$  is the numbers of selected match-up.

### 4. Verification of the TOA calibration of NAOMI/V1

The top of atmosphere (TOA) radiance of NAOMI,  $L_{TOA}(\lambda)$ , is calculated through Eq. (4).

$$L_{TOA}(\lambda) = \frac{DN(\lambda)}{\text{gain}(\lambda)} + \text{bias}(\lambda) \quad (4)$$

where  $DN(\lambda)$ ,  $\text{bias}(\lambda)$ ,  $\text{gain}(\lambda)$  are the digital number, the bias, and the gain spectral values provided for each NAOMI image. In a similar way, the top of atmosphere (TOA) radiance of OLI,  $L_{TOA}(\lambda)$  (in  $\text{W m}^{-2} \text{ sr}^{-1} \mu\text{m}^{-1}$ ), which will be used to test the present atmospheric correction algorithm due to the large match-up data set for OLI, is defined as follows:

$$L_{TOA}(\lambda) = M_L(\lambda)Q_{cal}(\lambda) + A_L(\lambda) \quad (5)$$

where  $M_L(\lambda)$  is the radiance multiplicative scaling factor (i.e. gain) for each band,  $Q_{cal}(\lambda)$  the Level-1 pixel value in digital number, and  $A_L(\lambda)$  the radiance additive scaling factor (i.e. offset) for each band.

The TOA reflectance,  $\rho_{TOA}(\lambda)$  for OLI and NAOMI are then calculated from  $L_{TOA}(\lambda)$  using Eq. (6):

$$\rho_{TOA}(\lambda) = \frac{\pi L_{TOA}(\lambda) d^2}{F_0(\lambda) \cos(\theta_0)} \quad (6)$$

where  $d$ ,  $F_0$ , and  $\theta_0$  are the Earth-Sun distance in Astronomical Units, the band average solar irradiance [43], and the sun zenith angle, respectively.

A comparison between measured and simulated NAOMI TOA reflectance is performed to check the radiometric calibration of the sensor. Simulations are carried out using the Ocean Successive Orders with Atmosphere - Advanced (OSOAA V1.4) radiative transfer code [35]. The OSOAA code simulates the propagation of the radiation through the Ocean-Atmosphere including coupling terms, and the interactions with the wind-ruffled sea surface. The code outputs ( $I_{out}$ ) are radiances normalized to an extraterrestrial solar irradiance set to  $\pi$ :

$$L_{TOA}(\lambda) = \frac{I_{out}(\lambda) F_0(\lambda)}{\pi} \quad (7)$$

Equation (6) and (7) lead to Eq. (8), that converts  $I_{out}$  into TOA reflectance to compare directly with NAOMI measurements:

$$\rho_{TOA}(\lambda) = \frac{d^2 I_{out}(\lambda)}{\cos(\theta_0)} \quad (8)$$

Simulations are carried out for the exact sun-sensor geometry of the considered scenes presented in Table 3 and for  $\lambda$  from 420 to 920 nm, with a 1 nm step. For each channel, the spectral TOA reflectance is convoluted with the spectral response function of NAOMI (Fig. 2) and is finally integrated to generate the simulated bandpass average.

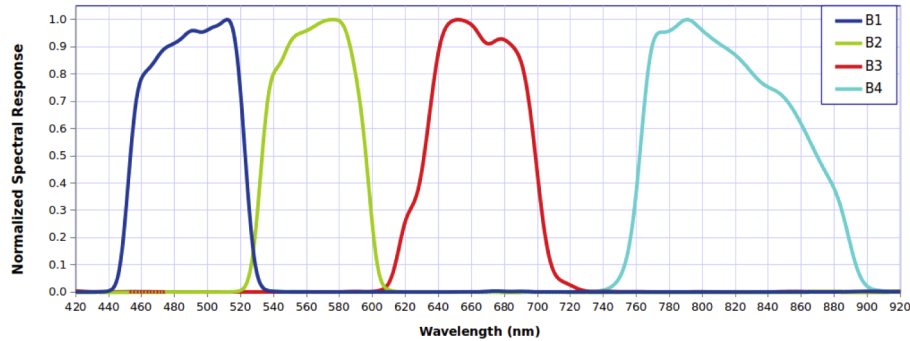


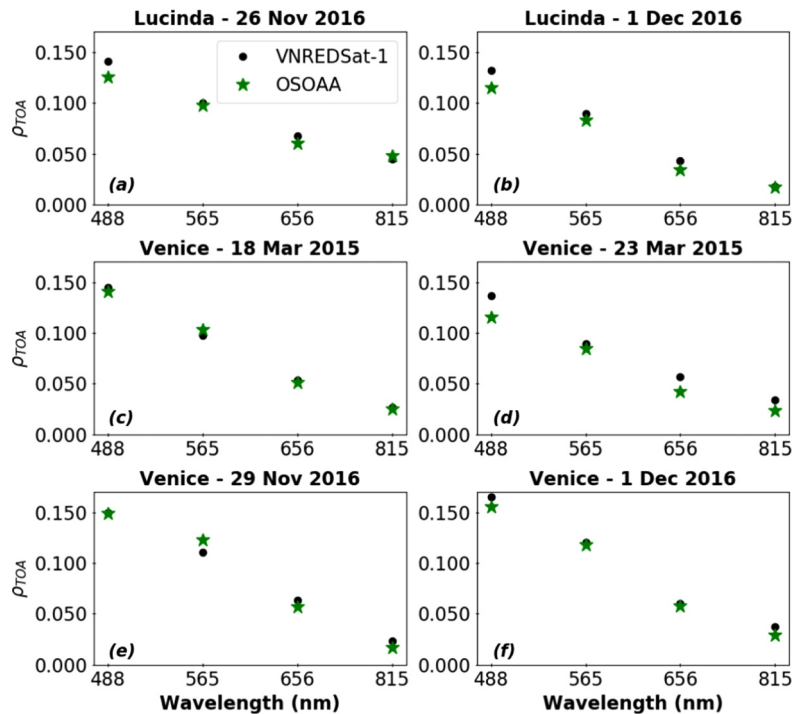
Fig. 2. VNREDSat-1 bands spectral response.

The comparison analysis is realized over the Venice (Italy) and Lucinda (Australia) Aeronet-OC sites. The AERONET-OC ground-based measurements (the atmospheric pressure  $P_0$  and the wind speed  $W$  at sea level, the aerosol optical thickness  $AOT(\lambda)$ , and the normalized water-leaving radiance  $L_{WN}(\lambda)$ ) are used as code inputs. Coastal aerosols are defined according to [44]. Note that the normalized water-leaving radiance and aerosol optical thickness (from 0.02 and 0.25 in the NIR depending on the image) from AERONET-OC are interpolated over the wavelength to provide inputs for the code with a 1 nm resolution. The wavy sea surface is modeled in OSOAA using the Cox-Munk wave slope probability density depending on the surface wind speed [45]. Reflection by individual whitecaps is neglected, which is adequate for the purpose of our study as the wind speed is low ( $W < 2 \text{ m}\cdot\text{s}^{-1}$ ). The pressure at sea level ( $P_0$ ) is used to derive the molecular optical thickness needed to simulate the Rayleigh scattering. Concerning the water body, the in-water part of the code has not been considered as the normalized water-leaving radiance,

measured at the AERONET-OC site and converted into reflectance (Eq. (5)), has directly been injected into OSOAA (considering a lambertian surface):

$$\rho_{\text{WN}}(\lambda) = \frac{\Pi}{F_0} L_{\text{WN}}(\lambda) \quad (9)$$

Figure 3 displays the NAOMI measured and simulated TOA reflectance. Considering the 6 match-up data points, the relative difference values calculated between the measured and simulated TOA reflectances, are 10% in the blue, 3.3% in the green, and 15% in the red. This number are similar to those reported for a similar exercise performed for the GOCI sensor for which the difference is between 1.05 and 8.14% [46]. The relative high value in the red is explained by the low absolute value of the signal, and to the signal over noise ratio of NAOMI. No specific relationship has been found between the aerosol optical thickness and these TOA relative differences. Supplementary match-up data points are however required to confirm these results and to derive statistically robust vicarious gains.



**Fig. 3.** Spectral values of the TOA reflectance measured on March 18, 2015 by VNREDSat-1 (black dots) and estimated from radiative transfer calculations ((green stars) over the different NAOMI match-up stations (Table 3) and using the measured normalized water-leaving radiance.

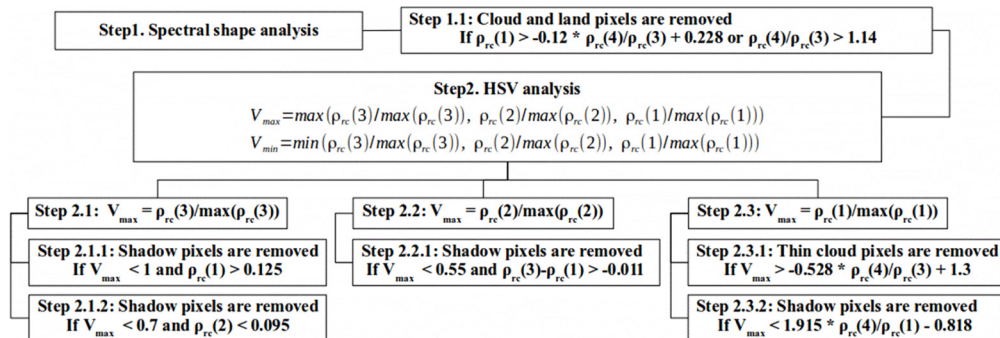
## 5. The water pixel extraction procedure for VNREDSat-1

Detection and extraction of surface water pixels is a prerequisite step prior to applying atmospheric correction algorithms dedicated to the estimation of  $R_{rs}(\lambda)$  from  $L_{\text{TOA}}(\lambda)$ . For that purpose, the water pixel extraction algorithm (WiPE) recently developed for the Landsat-8 OLI and Sentinel-2 MSI sensors [20] has been adapted to VNREDSat-1 for the present study. This algorithm which requires the Rayleigh-corrected reflectance spectrum,  $\rho_{\text{rc}}(\lambda)$ , as input parameter, is based on the application of two successive steps. First, different spectral criteria are applied to mainly



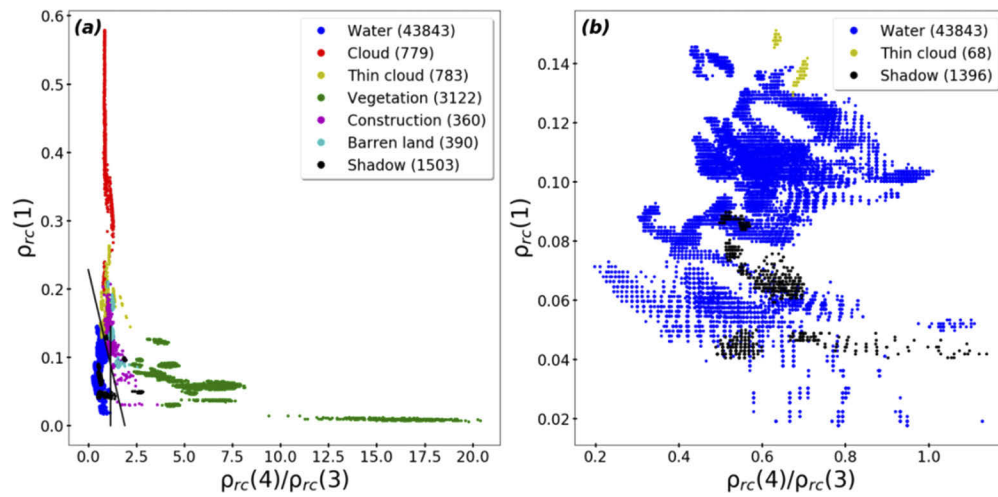
disregard clouds, vegetation, barren land, and construction pixels. Due to the complex radiative interactions occurring between thin clouds or cloud shadow and the overlaid water pixels, the identification of these two latter objects cannot properly be performed using the spectral shape analysis developed in the first step. For that purpose, the  $\rho_{rc}(\lambda)$  spectra are transferred into the Hue, Saturation Value (HSV) color space to improve the distinction between water pixels and thin cloud and shadow pixels over water areas. As the complete description of the WiPE algorithm and its performances are provided in [20], we only provide here the main modifications for the adaptation of WiPE to VNREDSat-1.

In the present study, 17 VNREDSat-1 images, collected over various bio-optical environments, similar to the ones described in [20], have been gathered for the development data set. This spectral database accounts for seven different objects: water (43,843 pixels), cloud (779 pixels), thin cloud (783 pixels), vegetation (3,122 pixels), construction (360 pixels), barren land (390 pixels), and shadow (1,503 pixels). Due to the lower number of spectral bands of NAOMI compared to OLI, the two different steps of the WiPE algorithm for NAOMI are based on a restricted number of spectral criteria (Fig. 4). The spectral analysis based on the development data set shows that if  $\rho_{rc}(1)$  is greater than  $-0.12 \rho_{rc}(4)/\rho_{rc}(3) + 0.228$  and if  $\rho_{rc}(4)/\rho_{rc}(3)$  is greater than 1.14 then cloud, some thin cloud and land pixels are removed (Fig. 5). In addition to removing the totality of the vegetation, cloud, barren land, and construction pixels, the application of this criteria also removed many thin clouds (91% of total thin clouds pixels) and some shadow pixels (7% of total shadow pixels). The remaining clouds shadow and thin cloud pixels may be partly removed by the HSV analysis where different criteria are applied depending on the wavelengths at which  $V_{max}$  is reached (Fig. 4). At the end of the whole processing 2% of thin clouds and 82% of cloud shadows remain on the development data-set. The large percentage of remaining cloud shadow pixels is due to the unavailability of SWIR bands, in contrast to the WiPE version developed for OLI [20].



**Fig. 4.** The logic flow of the water extraction pixel algorithm based on the combination of spectral shape analysis (step 1) and HSV analysis (step 2) for the NAOMI sensor. This flowchart requires the Rayleigh corrected reflectance at bands 1, 2, 3, and 4 as input parameters.

The WiPE algorithm adapted to NAOMI is validated using 5 images not included in the development data set and collected over contrasted areas (Table 4). For each image, a reference water pixel map (referred to as the reference WPM hereafter) was derived as in [20] using the QGIS software. The performance of the WiPE algorithm developed for NAOMI is then quantified using the Mean Absolute Percentage Difference (MAPD in %) calculated between the reference number of water pixels (WPM) and the number of water pixels generated by WiPE. The MAPD varies between 0.07% to 5.6% over the five validation scenes, the highest MAPD value (5.6%) being found for the scene collected over the Tonle Sap area (Fig. 6(c), 6(d)) which presents the highest cloud coverage (25%) and cloud shadow. The algorithm allows us to remarkably

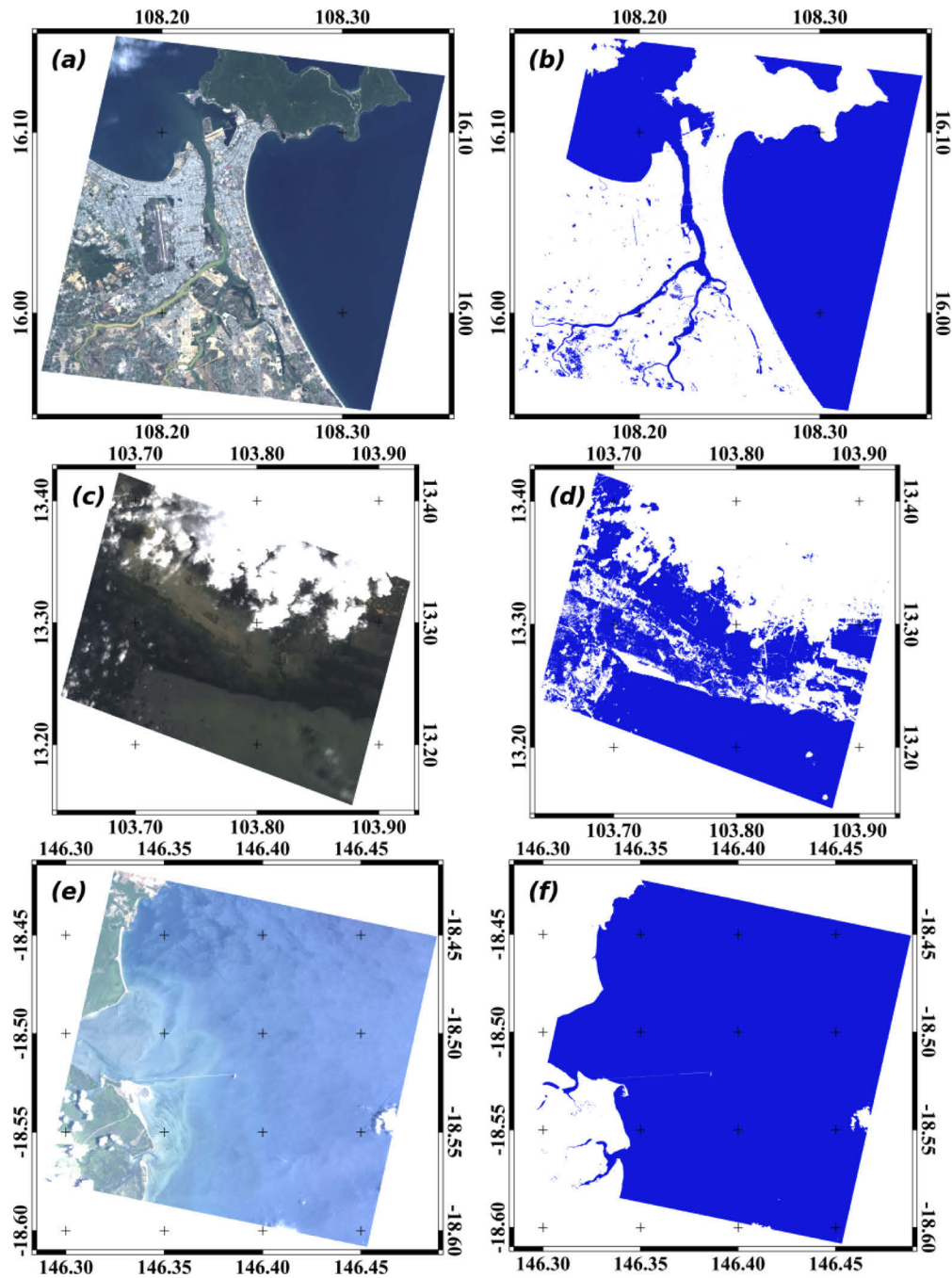


**Fig. 5.** (a) Scatter plots of  $\rho_{rc}(1)$  as a function of the  $\rho_{rc}(4)/\rho_{rc}(3)$  band ratio for the seven different objects of the development data set (each color corresponds to a different object as indicated). The black lines correspond to the limit adopted to remove vegetation, clouds, construction, barren land, and thin clouds (step 1.1). The number of pixels before (panel a) and after (panel b) the application of the criterion adopted in steps 1.1 are provided in each panel.

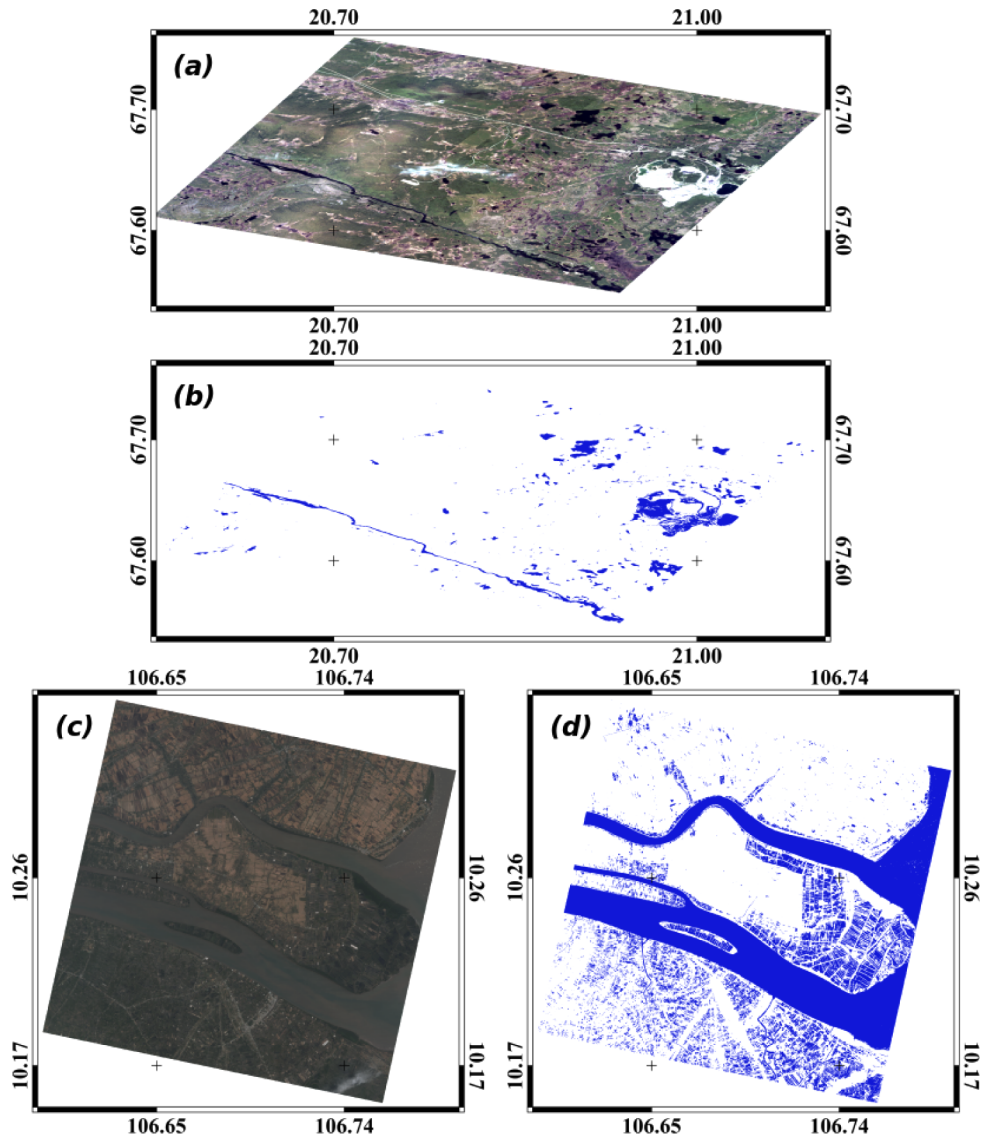
extract water pixels over very turbid waters, without confusion with land or clouds pixels, and also in complex environments such as aquaculture areas (Fig. 7(c), 7(d)), but seems however to underestimate the number of cloud shadow pixels. This latter pattern, which mainly explains why WiPE slightly over estimates the number of water pixels (Table 4), is due to the restricted number of pertinent bands to perform a proper correction based on the HSV analysis [20].

**Table 4. Performance of the WiPE algorithm developed for NAOMI/VNREDSat-1 images. The number of water pixels identified by WiPE and visual interpretation are used to calculate the Mean Absolute Percentage Difference (MAPD in %). The numbers are given for whole 5 considered scenes.**

Location	Date	WiPE [Pixels]	Visual interpretation [Pixels]	MAPD [%]
Danang-Vietnam	19 <sup>th</sup> May 2013	1,649,729	1,643,625	0.371
Tonlesap-Cambodia	13 <sup>rd</sup> Oct 2018	1,517,950	1,444,784	5.064
Lucinda-Australia	26 <sup>th</sup> Nov 2016	2,686,784	2,684,903	0.070
Puoltikasvaara-Sweden	28 <sup>th</sup> May 2013	200,552	200,772	0.110
Tien river estuary-Vietnam	15 <sup>th</sup> Apr 2015	968,041	964,653	0.351



**Fig. 6.** RGB VNREDSat-1 composite images over Danang-Vietnam (a), Tonlesap-Cambodia (c), and Lucinda-Australia (e). Results of the WiPE algorithm over the different selected images showing water pixels in blue, and other pixels in white (b, d, f). RGB VNREDSat-1 composite images over Puoltikasaara-Sweden (a-b), and the Tien river- Vietnam (c-d). Results of the WiPE algorithm over the different selected images showing water pixels in blue, and other pixels in white (b, d).



**Fig. 7.** RGB VNREDSat-1 composite images over Puoltikasvaara-Sweden (a-b), and the Tien river- Vietnam (c-d). Results of the WiPE algorithm over the different selected images showing water pixels in blue, and other pixels in white (b, d).

## 6. Atmospheric correction procedure based on Red-NIR band combination

### 6.1. Basics of atmospheric correction

The TOA reflectance can be written as shown in Eq. (10) [47–49]:

$$\rho_{TOA}(\lambda) = \rho_R(\lambda) + \rho_a(\lambda) + \rho_{Ra}(\lambda) + T(\lambda)\rho_g(\lambda) + t(\lambda)\rho_{wc}(\lambda) + t(\lambda)\rho_w(\lambda) \quad (10)$$

with  $\rho_R(\lambda)$ , the reflectance due to multiple scattering of a purely air molecules atmosphere;  $\rho_a(\lambda)$ , the reflectance of multiple scattering by aerosols in a pure aerosol atmosphere; and  $\rho_{Ra}(\lambda)$ , the interaction term in a real atmosphere containing both molecules and aerosols.  $T(\lambda)$  and  $t(\lambda)$  are the direct and diffuse transmittance of the atmosphere, respectively.  $\rho_g(\lambda)$ ,  $\rho_{wc}(\lambda)$ , and  $\rho_w(\lambda)$  are the reflectances due to sun glint, whitecaps, and in-water optically significant components, respectively. In the present study, the reflectance of whitecaps is estimated using the wind speed and the geometry [47,50,51]. The reflectance due to Rayleigh scattering in a purely molecular atmosphere is removed using the air pressure and the geometry [47]. Only glint-free images, identified from the geometry of observation and wind speed, are considered in this study. Correction of glitter images can however be performed following the different available methods using NIR and summarized in [52]. Finally, the atmospheric correction algorithm developed for NAOMI is based on the Rayleigh-corrected reflectance  $\rho_{rc}(\lambda)$  defined as follows:

$$\rho_{rc}(\lambda) = \rho_a(\lambda) + \rho_{Ra}(\lambda) + t(\lambda)\rho_w(\lambda) \quad (11)$$

The goal of the atmospheric correction is to determine  $\rho_a$  and  $\rho_{Ra}$  so the water-leaving reflectance,  $\rho_w$ , can be estimated as:

$$\rho_w(\lambda) = \frac{\rho_{rc}(\lambda) - \rho_a(\lambda) - \rho_{Ra}(\lambda)}{t(\lambda)} \quad (12)$$

with

$$t(\lambda) = t_0(\lambda)t_v(\lambda) = \exp\left[-\left(\frac{\tau_r}{2} + \tau_{oz}\right)/\cos(\theta_0)\right] \exp\left[-\left(\frac{\tau_r}{2} + \tau_{oz}\right)/\cos(\theta_v)\right] \quad (13)$$

$t(\lambda)$  is computed knowing the diffuse transmittance for the sun-sea ( $t_0$ ) and sea-sensor ( $t_v$ ) directions.  $\tau_r$  and  $\tau_{oz}$  are the band average Rayleigh and Ozone optical thickness and are estimated for a standard atmosphere and using the air pressure.  $\theta_0$ ,  $\theta_v$  are sun and sensor zenith angles, respectively. At first approximation, the aerosol transmittance is set to 1.0 in the present study. Over open ocean waters, the black pixel assumption in the NIR (i.e., the ocean being totally absorbent) is used to estimate the aerosol models and optical properties that are then used to estimate  $\rho_a$  and  $\rho_{Ra}$  [48]. Over optically-complex waters, this assumption is not valid anymore and it is necessary to deal with a non-zero  $\rho_w$  [21,53–58]. This is the purpose of the following section, where an atmospheric correction algorithm over coastal waters is developed taking into account the limited number of NAOMI spectral bands.

### 6.2. Description of the atmospheric correction scheme

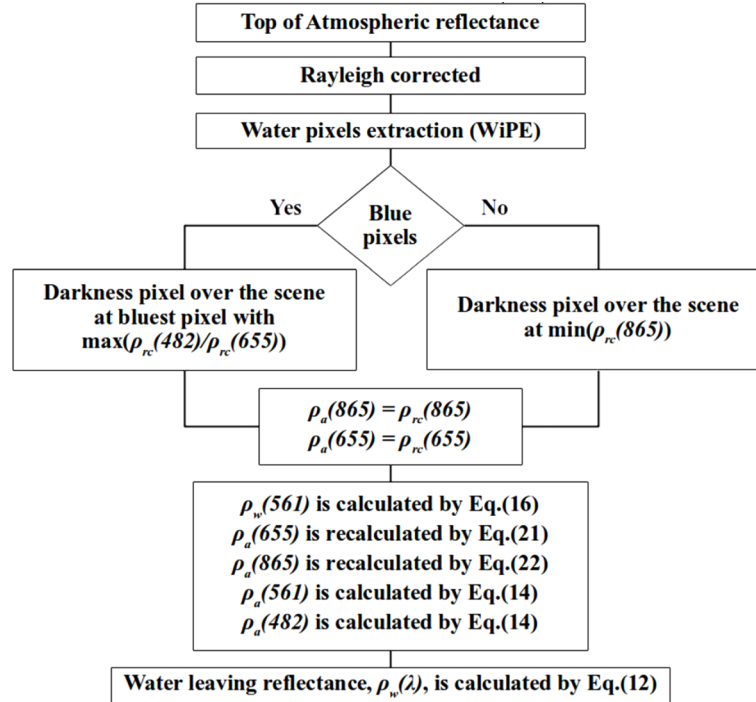
The atmospheric correction scheme presented here is decomposed into several steps (Fig. 8). The first step is to use the WiPE algorithm to identify the water pixels (section 5). Then the clearest water pixel is extracted over the region of interest. If blue pixels, defined as pixels for which  $\rho_{rc}(482) > \rho_{rc}(561) > \rho_{rc}(655)$ , exist, then the pixel with the combined maximum value of the  $\rho_{rc}(482)/\rho_{rc}(655)$  Rayleigh corrected reflectance ratio, and minimum  $\rho_{rc}(865)$  value is selected. If no pixel fulfills the first conditions, the one with the minimum  $\rho_{rc}(865)$  value is considered as the clearest pixel. Once the clearest pixel is extracted, we consider that  $\rho_a(865)$  is equal to  $\rho_{rc}(865)$  for this pixel, as  $\rho_{Ra}(865)$  can be ignored in first approximation. Knowing  $\rho_a(865)$  at

the clearest pixel, led to the determination of  $\rho_a(\lambda_L)$  at shorter wavelengths using the epsilon parameter [48]:

$$\rho_a(\lambda_L) = (\varepsilon_{655,865})^n \rho_a(865) \quad (14)$$

with  $n = \frac{865-\lambda_L}{865-655}$  and

$$\varepsilon_{655,865} = \frac{\rho_a(655)}{\rho_a(865)} \quad (15)$$



**Fig. 8.** The logical flow of the Red-NIR model. Note that the iterative procedure is performed by the use of Eqs. (21) and (22).

Combining Eqs. (14) and (15), a first guess of the water leaving reflectance in the green band (561 nm) can then be estimated as follows:

$$\rho_w(561) = \frac{\rho_{rc}(561) - \left(\frac{\rho_{rc}(655)}{\rho_{rc}(865)}\right)^{\frac{865-561}{865-655}} \rho_{rc}(865)}{t(561)} \quad (16)$$

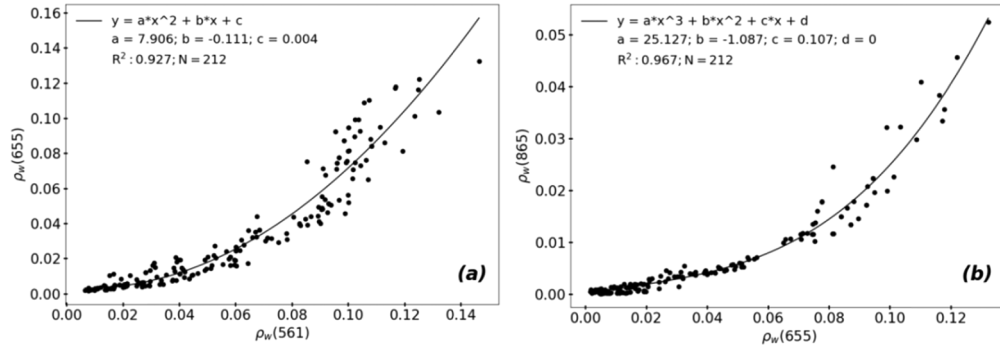
As mentioned previously, we considered at the first step that  $\rho_a(865)$  and  $\rho_a(655)$  were equal to  $\rho_{rc}(865)$  and  $\rho_{rc}(655)$  at the clearest pixel, respectively. At the second step, these values are re-calculated as we considered that the water leaving signal was negligible in the first step of the algorithm. The new values of  $\rho_a(655)$  and  $\rho_a(865)$  at the clearest pixel can be estimated as follows:

$$\rho_a(655) = \rho_{rc}(655) - t(655) \cdot \rho_w(655) \quad (17)$$

$$\rho_a(865) = \rho_{rc}(865) - t(865) \cdot \rho_w(865) \quad (18)$$

At this point, we only have a first guess of  $\rho_w(561)$ , that will be used to estimate  $\rho_w(665)$  using an empirical relationship developed from the in situ data set presented in section 2.2 (Fig. 9(a)):

$$\rho_w(665) = 7.91\rho_w^2(561) - 0.111\rho_w(561) + 0.00367 \quad (19)$$



**Fig. 9.** In situ (a)  $\rho_w(665)$  versus  $\rho_w(561)$  and (b)  $\rho_w(865)$  versus  $\rho_w(655)$ . The black curve represents the best fit to the data.

Similarly,  $\rho_w(865)$  is estimated from  $\rho_w(655)$  using the following empirical relationship (Fig. 9(b)):

$$\rho_w(865) = 25.1\rho_w^3(655) - 1.09\rho_w^2(655) + 0.107\rho_w(655) - 0.0000237 \quad (20)$$

The new values of  $\rho_a(655)$  and  $\rho_a(865)$ , considered equal to  $\rho_{rc}(655)$  and  $\rho_{rc}(865)$ , respectively, at the first step of the algorithm, can therefore be calculated knowing  $\rho_w(655)$  and  $\rho_w(865)$  as follows:

$$\rho_a(655) = \rho_{rc}(655) - t(655)(7.91\rho_w^2(561) - 0.111\rho_w(561) + 0.00367) \quad (21)$$

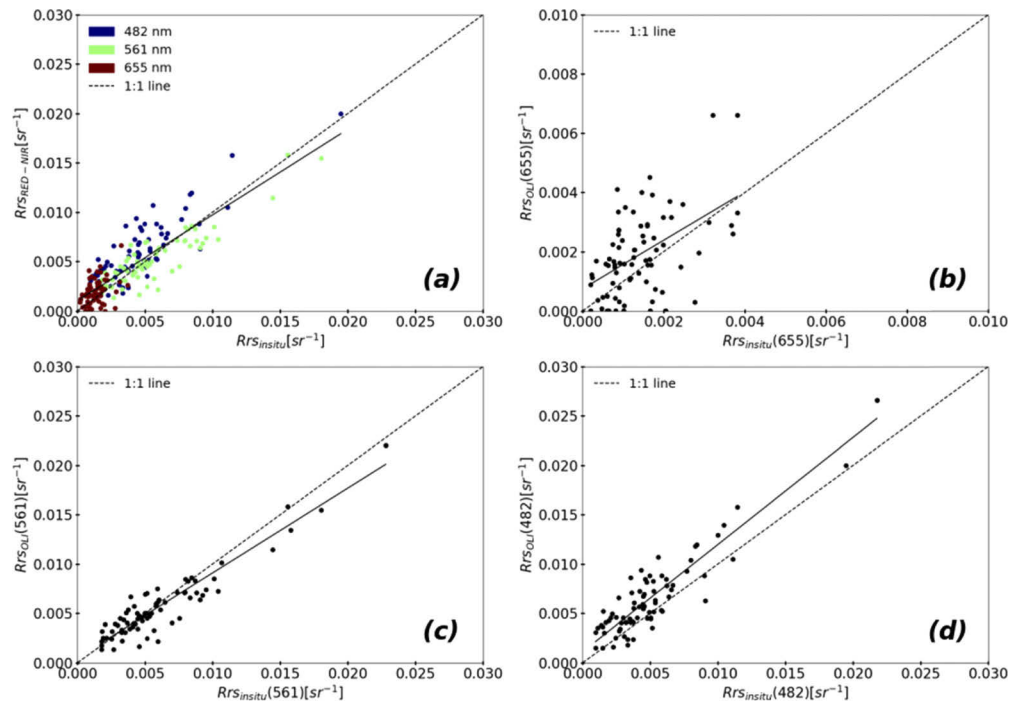
$$\rho_a(865) = \rho_{rc}(865) - t(865)(25.1\rho_w^3(655) - 1.09\rho_w^2(655) + 0.107\rho_w(655) - 0.0000237) \quad (22)$$

These two new values of  $\rho_a$  in the red and NIR are then used to update the atmospheric correction parameters  $\varepsilon_{i,j}$  for a given scene, implying that the aerosols optical thickness and types are even over the whole scene, which is similar to the approach developed by [54]. The  $\rho_a$  reflectances at the shorter bands  $\lambda_L$  are then calculated by using Eq. (14), as explained previously (Eq. (16) has been written to compute  $\rho_w(561)$ , however the same equation is used for  $\rho_w(482)$  where 561 should be replaced by 482). Finally, the water-leaving reflectances at the NAOMI spectral bands are estimated using Eq. (16), and the whole process is repeated one time when  $\rho_a(655)$  and  $\rho_a(865)$  are re-calculated from Eq. (17) and Eq. (18) using the new values of  $\rho_w(655)$  and  $\rho_w(865)$ , respectively. We verified, using the match-up data set, that this iterative procedure allows us to improve the  $R_{rs}(\lambda)$  retrieval.

## 7. Validation of the new atmospheric correction algorithm

### 7.1. Match-up exercise for OLI based on the NAOMI configuration

The performance of the Red-NIR algorithm is evaluated from the 67 match-up data points (Fig. 9 and Table 5). On average, considering the whole spectrum (Fig. 9(a)), the Red-NIR algorithm is able to assess  $R_{rs}(\lambda)$  with a RMSD of  $0.0017 \text{ sr}^{-1}$ , a MPD of 13.3%, and a MB of  $5.3 \cdot 10^{-4} \text{ sr}^{-1}$ . However, this average good pattern ( $r^2=0.75$ ) masks some important spectral differences. Among the three available visible bands, the green band presents the best  $R_{rs}$  retrieval accuracy (RMSD =  $0.0015 \text{ sr}^{-1}$ ; MPD = -3.21%; MB =  $-3.7 \cdot 10^{-4} \text{ sr}^{-1}$ ), whereas  $R_{rs}$  in the red is estimated with the lowest accuracy (RMSD =  $0.0012 \text{ sr}^{-1}$ ; MPD = 54%; MB =  $5.5 \cdot 10^{-4} \text{ sr}^{-1}$ ). This latter pattern is likely linked to uncertainties of Eq. (20) for low level of turbidity, and to the low level of signal at this band (lower than  $0.003 \text{ sr}^{-1}$ ) making the inversion more challenging. As a matter



**Fig. 10.** (a) Comparison of the Red-NIR-derived and measured  $R_{rs}(\lambda)$  values from the Landsat-8/OLI match-up data set ( $N = 67$ ) at (a) all bands, (b) 655 nm, (c) 561 nm, and (d) 482 nm. The solid line represents the best linear regression type-II fit to data and the dashed line represents the 1:1 line.

of fact, almost all data points have a  $R_{rs}(655)$  value lower than  $0.003 \text{ sr}^{-1}$ , which corresponds to suspended particulate matter concentration lower than about  $3.5 \text{ g} \cdot \text{m}^{-3}$  [59].

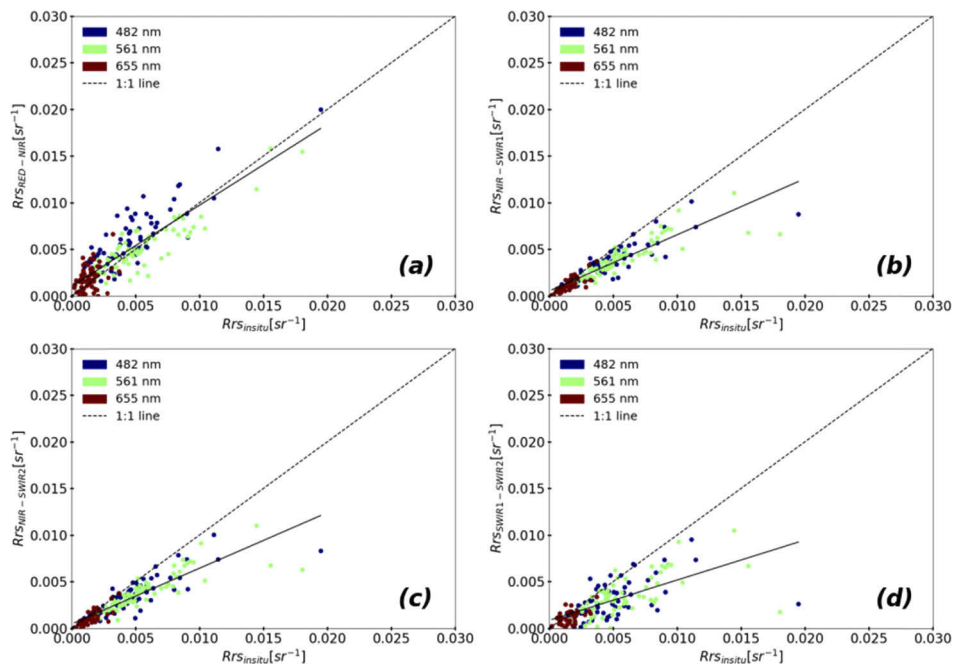
The performance of the Red-NIR algorithm is now compared to the ones achieved using the three different NIR and SWIR band combinations available in SeaDAS, which performances have been already tested for OLI in [25] (Table 5, Fig. 11). While the Red-NIR algorithm (Fig. 11(a)) provides better results when all bands are pulled together (Table 5), it is also clearly visible that the use of NIR-SWIR bands (Figs. 11(b), 11(c)) allows  $R_{rs}$  to be estimated with a much better accuracy in the red part of the spectrum. For instance, the RMSD value is 54% by the Red-NIR model, and -19% and -22% for the NIR-SWIR1 and NIR-SWIR2 SeaDAS combinations, respectively. For the blue and green bands, the Red-NIR algorithm and the NIR-SWIR1 combination provides about the same results, while the NIR-SWIR2 combination is slightly lower in terms of performance. Note however, that the scatter around the 1:1 line is always lower for the NIR-SWIR combinations (Figs. 11(b), 11(c)) than with the Red-NIR model (Fig. 11(a)). At last, the combination of two SWIR bands (Fig. 11(d)) always provides lower performances compared to the NIR-SWIR combinations, in agreement with the results of [25], but also when compared to the Red-NIR model.

The match-up data set allowed the performance of the Red-NIR model to be evaluated and compared with the SeaDAS algorithms only over slightly turbid waters. The performance of the WiPE + Red-NIR process for turbid to very turbid waters is illustrated by a scene sampled by OLI over the Hangzhou Bay in China on February 8, 2015 (Fig. 12). This scene clearly stresses the interest of WiPE (Fig. 12(b)) for the identification of water pixels over very turbid waters characterized by a maximum of  $R_{rs}(\lambda)$  in the NIR (not shown). This is consistent with recent



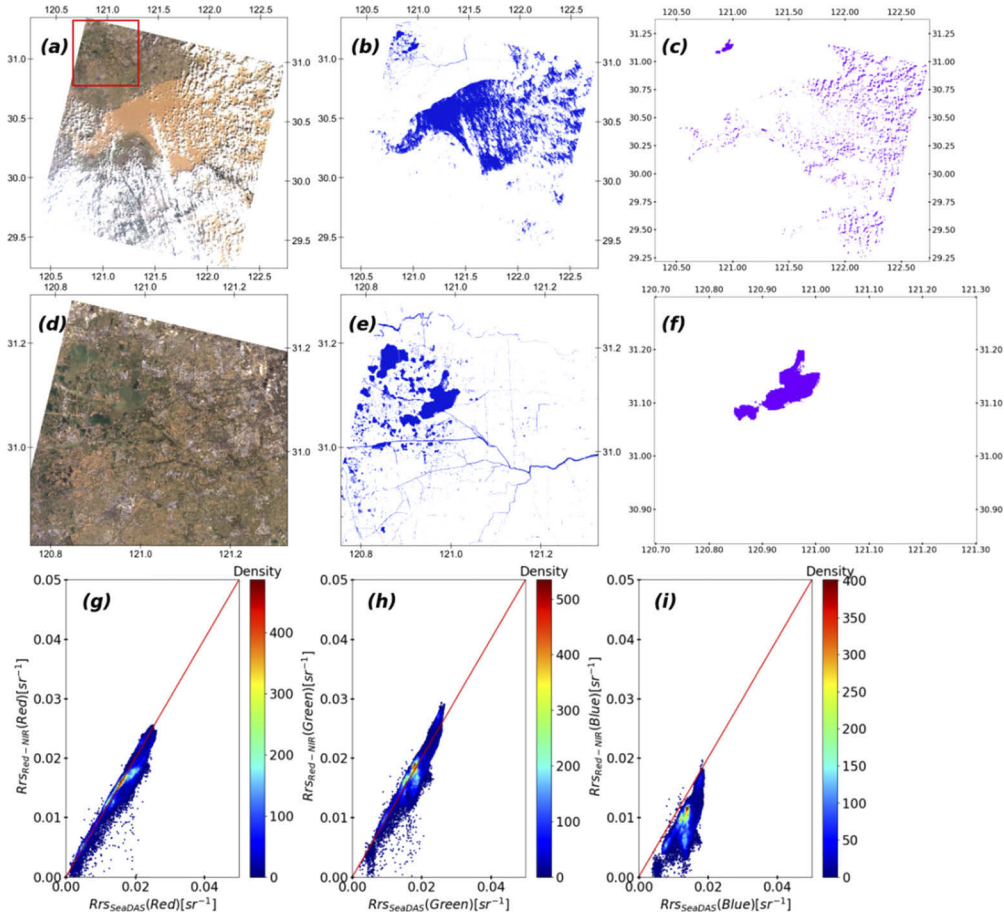
**Table 5. Statistical indicators of the performance of the Red-NIR model and the three SeaDAS atmospheric correction configurations in retrieving based on the 67 match-up data points.**

Models	Band [nm]	RMSD [ $\text{sr}^{-1}$ ]	MPD [%]	MB [ $\text{sr}^{-1}$ ]	Slope	Intercept	$R^2$
Red-NIR (655-865 nm)	RGB	1.721E-03	13.309	5.311E-04	8.62E-01	8.20E-05	0.748
	482	2.225E-03	28.246	1.411E-03	7.62E-01	5.54E-05	0.720
	561	1.483E-03	-3.214	-3.715E-04	1.04E+00	1.53E-04	0.794
	655	1.251E-03	54.100	5.532E-04	2.27E-01	8.84E-04	0.161
NIR-SWIR1 (865-1609 nm)	RGB	1.849E-03	-24.301	-1.104E-03	1.34E+00	4.38E-05	0.817
	482	1.975E-03	-22.961	-1.156E-03	1.27E+00	1.91E-04	0.729
	561	2.472E-03	-26.433	-1.707E-03	1.36E+00	2.57E-04	0.731
	655	4.968E-04	-19.014	-2.501E-04	8.10E-01	4.51E-04	0.687
NIR-SWIR2 (865-2201 nm)	RGB	1.930E-03	-26.037	-1.126E-03	1.33E+00	1.94E-04	0.802
	482	2.093E-03	-25.838	-1.277E-03	1.23E+00	4.64E-04	0.700
	561	2.548E-03	-27.277	-1.792E-03	1.34E+00	4.52E-04	0.718
	655	5.491E-04	-21.877	-3.094E-04	7.79E-01	5.29E-04	0.661
SWIR1-SWIR2 (1609-2201 nm)	RGB	3.263E-03	-42.272	2.003E-03	1.01E+00	1.70E-03	0.500
	482	3.843E-03	-40.271	-2.370E-03	4.58E-01	3.66E-03	0.207
	561	3.731E-03	-38.721	-2.631E-03	7.12E-01	3.52E-03	0.356
	655	1.802E-03	-50.437	-1.008E-03	1.94E-01	1.25E-03	0.199



**Fig. 11.** (a) Performance of the (a) Red-NIR, (b) NIR-SWIR1, (c) NIR-SWIR2, and (d) SWIR1-SWIR2 atmospheric correction algorithms for the estimation of  $R_{rs}(\lambda)$  at the blue, green and red Landsat-8/OLI nominal wavelengths for the 67 match-up data points. The solid line represents the best linear regression type-II fit to data and the dashed line represents the 1:1 line.

results showing that WiPE is able to assess water pixels over very turbid water surfaces [20], in contrast to other approaches such as the approach used in SeaDAS (Fig. 12(c)). A restricted inland area, characterized by a relatively high turbidity level with maximum  $R_{rs}(\lambda)$  values of about  $0.02 \text{ sr}^{-1}$  in the green or red channels (depending on the considered pixel), allows the Red-NIR  $R_{rs}(\lambda)$  and NIR1-SWIR  $R_{rs}(\lambda)$  estimations to be compared (Figs. 12(d), 12(e), 12(f)). For this level of turbidity, an excellent agreement between the two processings is found in the red (Fig. 12(g)) and green (Fig. 12(h)) bands, and systematic differences are observed in the blue, with higher  $R_{rs}$  values estimated by NIR1-SWIR than by Red-NIR (Fig. 12(i)).

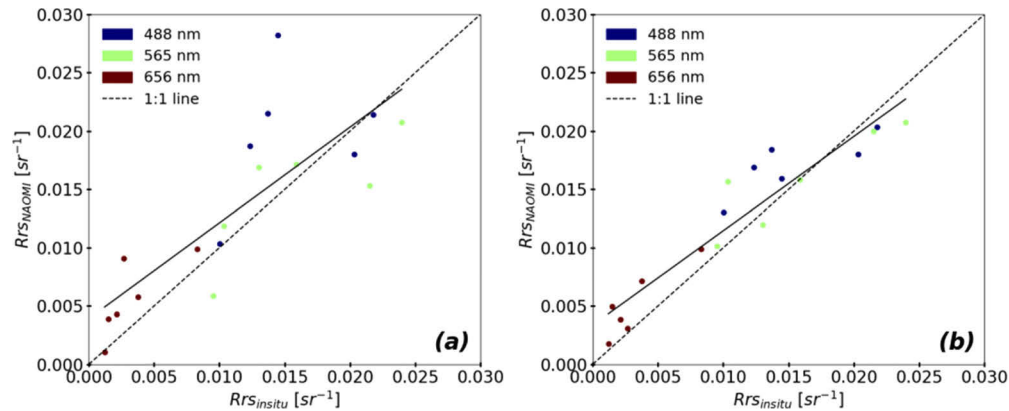


**Fig. 12.** (a) RGB OLI composite images over the Hangzhou Bay (China). Results of the (b) WiPE and (c) SeaDAS algorithms for the identification of the water pixels. (d), (e), and (f) same as (a), (b), and (c), respectively but over the area identified by the red square in (a). Scatter plots of the  $R_{rs}(\lambda)$ -Red-NIR vs.  $R_{rs}(\lambda)$  NIR-SWIR1 in the (g) red, (h) green, and (i) blue bands. The solid line represents the 1:1 line.

## 7.2. Match-up exercise for VNREDSat-1

The present algorithm is now validated based on the restricted match-up VNREDSat-1 data set presented in section 2.1. For that purpose, the in situ remote sensing reflectance values measured at the Venice (4 scenes) and Lucinda (2 scenes) are compared to the NAOMI- $R_{rs}(\lambda)$  at the center wavelength of NAOMI, using the spectral response function provided in Fig. 2. These latter bands are 488 nm, 565 nm, and 655 nm. Due to the restricted number of match-up data, the

statistical results have to be interpreted with caution. However, the similar patterns (about the same RMSD and MPD values) as the one previously described for OLI can be observed, with the best retrieval achieved at 565 nm (Table 6 and Fig. 13(a)). Accounting for the new TOA calibration factors, estimated from the exercise performed in section 4, slightly improves the  $R_{rs}$  retrieval, especially in the blue part of the spectrum (Fig. 13(b) and Table 6). This later result should however be interpreted with caution as more match-up data points are needed to confirm these TOA calibration factors.



**Fig. 13.** (a) Comparison of the Red-NIR derived and measured  $R_{rs}(\lambda)$  values from the VNREDSat-1 match-up data set (N = 6). The solid line represents the best linear regression type-II fit to data and the dashed line represents the 1:1 line. (b) Same as (a) but after the application of the TOA calibration factors estimated in Section 4.

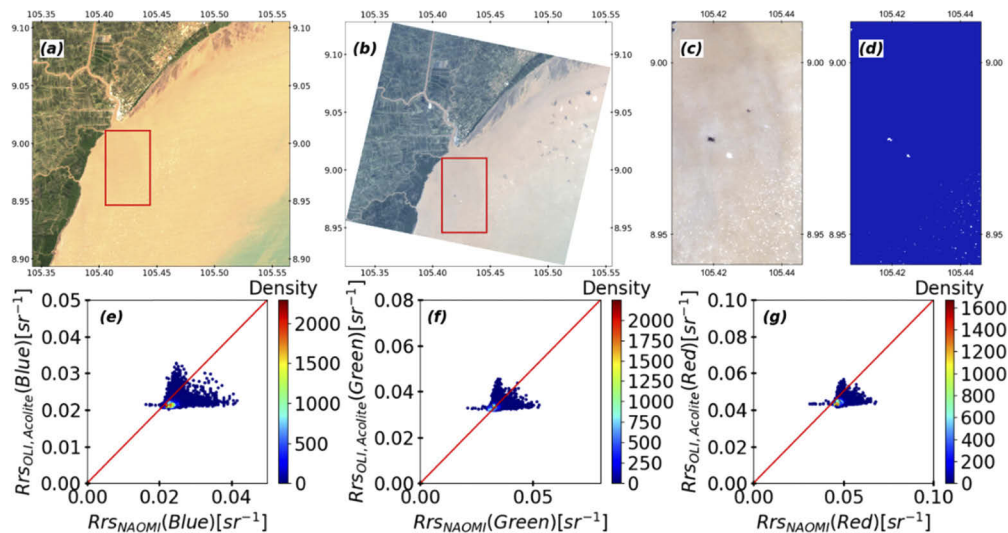
**Table 6.** Statistic table performs accuracy of  $R_{rs}[sr^{-1}]$  by applying RED-NIR processing on 06 VNREDSat-1 scenes based on match-up analysis.

Band	RMSD [ $sr^{-1}$ ]	MPD [%]	MB [ $sr^{-1}$ ]	Slope	Intercept
1 – Blue (488nm)	0.0032 [0.0032]	27.415 [-20.131]	4.264E-03 [-0.0017]	0.263 [0.434]	0.0102 [0.01]
2 – Green (565nm)	0.0016 [0.0027]	-2.687 [3.741]	-1.07E-03 [-8.7E-06]	0.879 [0.631]	0.00284 [0.006]
3 – Red (656 nm)	0.0008 [0.0022]	76.631 [-62.246]	2.399E-03 [-0.00185]	0.602 [1.007]	-0.000146 [0.002]

### 7.3. Intercomparison of NAOMI and OLI $R_{rs}$ products over one turbid area

One area over the Camau province in South Vietnam has been sampled nearly simultaneously (about 20 minutes of time interval) by OLI and NAOMI on January 8, 2015 (Fig. 14) allowing the inter-comparison of their respective estimated  $R_{rs}(\lambda)$ . Due to the failure of the previously tested SeaDAS algorithms, which would have required a specific action such as manually fixing the aerosols optical thickness, the OLI image was processed using ACOLITE [27]. Comparison over water pixels collected in this relatively turbid waters, characterized by  $R_{rs}(655)$  values around  $0.05 sr^{-1}$ , shows a good agreement at the three considered bands between the OLI- $R_{rs}(\lambda)$  values estimated by the dark spectrum fitting (DSF) atmospheric correction method in ACOLITE [27] and the NAOMI- $R_{rs}$  values estimated by the Red-NIR algorithm (Fig. 14(d), 14(e), 14(f)). The negatives and low MB ( $-0.0038 sr^{-1}$  in the blue,  $0.0001 sr^{-1}$  in the green, and  $0.002 sr^{-1}$  in the red) and MPD ( $-8.6\%$  in the blue,  $-0.05\%$  in the green, and  $-9.4\%$  in the red) values stress that

the Red-NIR slightly under-estimate  $R_{rs}(\lambda)$  in the visible compared to ACOLITE-DSF. If this pattern is confirmed from other images, it may be explained by the NAOMI TOA calibration factors, the adopted spectral relationships (Eq. (19) and Eq. (20)) which do not properly account for such high level of turbidity, and the aerosol transmittance which is fixed to 1.0 in the model. These three aspects should be addressed in the next version of the algorithm. The relatively narrow range of variability of the  $R_{rs}(\lambda)$  spectral values in the Fig. 14 density plots reflects the homogeneous distribution of SPM, mainly due to the calm conditions encountered during the acquisition day of the image (low wind speed, and low river outflow characteristics of the dry season). For this reason, the two algorithms provide very similar  $R_{rs}(\lambda)$  spatial distribution at the three considered wavelengths (not shown). The scatter points around the 1:1 lines are likely explained by the different spatial resolutions of the sensor and the presence of white-caps partly identified by WiPE (Fig. 14(c)).



**Fig. 14.** RGB (a) OLI and (b) NAOMI composite images over the Camau province (Vietnam). (c) Zoom on the red area of (a). (d) Results of the WiPE algorithm showing the detection of white-caps. Scatter plots of the  $R_{rs}(\lambda)$ -OLI-ACOLITE vs.  $R_{rs}(\lambda)$ -NAOMI-RED-NIR in the (d) red, (e) green, and (f) blue bands. The solid line represents the 1:1 line.

## 8. Concluding remarks

Due to the unavailability of SWIR bands on NAOMI, we developed a new atmospheric correction algorithm (Red-NIR) dedicated to the estimation of  $R_{rs}(\lambda)$  over coastal and inland waters. This iterative algorithm is based on the assumption of spatial homogeneity in the aerosol signal over the whole scene, and on the use of spectral relationships, similarly to the atmospheric correction algorithms of POLDER2 [60] and GOCI [61] between  $R_{rs}(\lambda)$  in the NIR and visible parts of the spectrum. The different results, based on match-up analysis (Figs. 10 and 12), emphasize that the WiPE-Red-NIR algorithm applied to NAOMI is well adapted for the monitoring of  $R_{rs}$  from clear to moderately turbid waters. Despite the absence of SWIR band on NAOMI, preliminary results based on the respective application of NIR-SWIR and ACOLITE/DSF [27] on simultaneous images collected by NAOMI and OLI over a more turbid water area, showed that these two algorithms performed similarly. Match-up exercise performed over very turbid waters should however be conducted in a near future to confirm this result, and to verify the performance of Red-NIR over such water areas. Specifically, we should test how the algorithm behaves for waters

presenting very different spectral behavior as the one described by Eq. (19) and (20). This study also stresses the need of additional match-up data points for a robust vicarious calibration of NAOMI.

## Funding

Vietnam Academy of Science and Technology (VT-CN.03/17-20, VT-UD.02/17-20); University of Science and Technology of Hanoi (LOTUS); National Space Science and Technology Program.

## Acknowledgment

We would like to thank USGS for free contributing Landsat-8/OLI images and Center for control and exploitation of small satellite, Space Technology Institute, Vietnam Academy of Science and Technology for contributing VNREDSat-1 images in this study. We also thank N. Pahlevan for kindly providing data with difference pair bands SeaDAS processing for the 67 Landsat-8/OLI scenes over the different AERONET-OC stations. The authors would like to thank all the PIs of the AERONET-OC stations. The authors also would like to thank the anonymous reviewers for their valuable comments and suggestion to improve the quality of the paper.

## References

1. "Climate change 2001: impacts, adaptation, and vulnerability," IPCC report (2001).
2. P. Schmidt-Thomé, T. H. Nguyen, T. L. Pham, J. Jarva, and K. Nuottimäki, "Climate change adaptation measures in Vietnam," *SpringerBriefs in Earth Sci.* (2015).
3. H. Loisel, A. Magin, V. Vantrepotte, D. Dessailly, D. D. Ngoc, P. Garnesson, S. Ouillon, J.-P. Lefebvre, X. Mériaux, and T. M. Phan, "Variability of suspended particulate matter concentration in coastal waters under the Mekong's influence from ocean color (MERIS) remote sensing over the last decade," *Remote Sens. Environ.* **150**, 218–230 (2014).
4. E. J. Anthony, G. Brunier, M. Besset, M. Goichot, P. Dussouillez, and V. L. Nguyen, "Linking rapid erosion of the Mekong River delta to human activities," *Sci. Rep.* **5**(1), 14745 (2015).
5. P. Marchesiello, N. M. Nguyen, N. Gratiot, H. Loisel, E. J. Anthony, D. C. San, T. Nguyen, R. Almar, and E. Kestenare, "Erosion of the coastal Mekong delta: Assessing natural against man induced processes," *Cont. Shelf Res.* (2019), <https://doi.org/10.1016/j.csr.2019.05.004>.
6. L. P. Melo de Almeida, R. Almar, B. Meyssignac, and N. T. Viet, "Contributions to coastal flooding events in southeast of Vietnam and their link with global mean sea level rise," *Geosciences (Basel, Switz.)* **8**(12), 437 (2018).
7. P. T. M. Hanh, D. T. Nghi, T. D. Lan, N. V. Quan, D. T. Ba, and P. H. Viet, "The status and distribution of PCBs along the coast of Vietnam," *Environ. Geochem. Health* **41**(1), 381–390 (2019).
8. H. Loisel, V. Vantrepotte, S. Ouillon, D. D. Ngoc, M. Herrmann, V. Tran, X. Mériaux, D. Dessailly, C. Jamet, T. Duhaut, H. H. Nguyen, and T. V. Nguyen, "Assessment and analysis of the chlorophyll-a concentration variability over the Vietnamese coastal waters from the MERIS ocean color sensor (2002–2012)," *Remote Sens. Environ.* **190**, 217–232 (2017).
9. Q. Vanhellemond and K. Ruddick, "Turbid wakes associated with offshore wind turbines observed with Landsat 8," *Remote Sens. Environ.* **145**, 105–115 (2014).
10. J. A. Concha and J. R. Schott, "Retrieval of color producing agents in Case 2 waters using Landsat 8," *Remote Sens. Environ.* **185**, 95–107 (2016).
11. T. Kutser, G. C. Pascual, C. Barbosa, B. Paavel, R. Ferreira, L. Carvalho, and K. Toming, "Mapping inland water carbon content with Landsat 8 data," *Int. J. Remote Sens.* **37**(13), 2950–2961 (2016).
12. L. Lymburner, E. Botha, E. Hestir, J. Anstee, S. Sagar, A. Dekker, and T. Malthus, "Landsat 8: providing continuity and increased precision for measuring multi-decadal time series of total suspended matter," *Remote Sens. Environ.* **185**, 108–118 (2016).
13. Z. Lee, S. Shang, L. Qi, J. Yan, and G. Lin, "A semi-analytical scheme to estimate Secchi-disk depth from Landsat-8 measurements," *Remote Sens. Environ.* **177**, 101–106 (2016).
14. J. A. Urbanski, A. Wochna, I. Bubak, W. Grzybowski, K. Lukawska-Matuszewska, M. Łącka, S. Śliwińska, B. Wojtasiewicz, and M. Zajaczkowski, "Application of Landsat 8 imagery to regional-scale assessment of lake water quality," *ITC J.* **51**, 28–36 (2016).
15. E. T. Slonecker, K. J. Daniel, and A. P. Brian, "The new Landsat 8 potential for remote sensing of colored dissolved organic matter (CDOM)," *Mar. Pollut. Bull.* **107**(2), 518–527 (2016).
16. Y. Li, Y. Zhang, K. Shi, Y. Zhou, Y. Zhang, X. Liu, and Y. Guo, "Spatiotemporal dynamics of chlorophyll-a in a large reservoir as derived from Landsat 8 OLI data: understanding its driving and restrictive factors," *Environ. Sci. Pollut. Res.* **25**(2), 1359–1374 (2018).

17. J. Li and D. P. Roy, "A global analysis of Sentinel-2A, Sentinel-2B and Landsat-8 data revisit intervals and implications for terrestrial monitoring," *Remote Sens.* **9**(9), 902 (2017).
18. C. D. Minh, "Space Technology Development of Vietnam in 2011-2012," Proceedings of APRSAF, 19 (2012).
19. P. Luquet, A. Chikouche, A. B. Benbouzid, J. J. Arnoux, E. Chinal, C. Massol, P. Rouchit, and S. de Zotti, "NAOMI instrument: a product line of compact & versatile cameras designed for high resolution missions in Earth observation," *Proceedings of the 7th ICSO* (2008).
20. D. D. Ngoc, H. Loisel, C. Jamet, V. Vantrepotte, L. Duforêt-Gaurier, C. D. Minh, and A. Mangin, "Coastal and inland water pixels extraction algorithm (WiPE) from spectral shape analysis and HSV transformation applied to Landsat 8 OLI and Sentinel-2 MSI," *Remote Sens. Environ.* **223**, 208–228 (2019).
21. F. Steinmetz, P.-Y. Deschamps, and D. Ramon, "Atmospheric correction in presence of sun glint: Application to MERIS," *Opt. Express* **19**(10), 9783–9800 (2011).
22. B. A. Franz, S. W. Bailey, N. Kuring, and P. J. Werdell, "Ocean color measurements with the Operational Land Imager on Landsat-8: implementation and evaluation in seaDAS," *J. Appl. Remote. Sens.* **9**(1), 096070 (2015).
23. C. Brockmann, R. Doerffer, M. Peters, K. Stelzer, S. Embacher, and A. Ruescas, "Evolution of the C2RCC neural network for Sentinel 2 and 3 for the retrieval of ocean colour products in normal and extreme optically complex waters," *Proceedings of Living Planet Symposium* (2016).
24. M. Main-Knorn, B. Pflug, J. Louis, V. Debaecker, U. Müller-Wilm, and F. Gascon, "Sen2Cor for Sentinel-2," *Proceedings Volume 10427, Image and Signal Processing for Remote Sensing XXIII* (2017).
25. N. Pahlevan, J. R. Schott, B. A. Franz, G. Zibordi, B. Markham, S. Bailey, C. B. Schaaf, M. Ondrusek, S. Greb, and C. M. Strait, "Landsat 8 remote sensing reflectance (Rrs) products: evaluations, intercomparisons, and enhancements," *Remote Sens. Environ.* **190**, 289–301 (2017).
26. L. De Keukelaere, S. Sterckx, S. Adriaensens, E. Knaeps, I. Reusen, C. Giardino, M. Bresciani, P. Hunter, C. Neil, D. Van der Zande, and D. Vaiciute, "Atmospheric correction of Landsat-8/OLI and Sentinel-2/MSI data using iCOR algorithm: validation for coastal and inland waters," *Eur. J. Remote. Sens.* **51**(1), 525–542 (2018).
27. Q. Vanhellefont, "Adaptation of the dark spectrum fitting atmospheric correction for aquatic applications of the Landsat and Sentinel-2 archives," *Remote Sens. Environ.* **225**, 175–192 (2019).
28. P. S. Chavez Jr., "An improved dark-object subtraction technique for atmospheric scattering correction of multispectral data," *Remote Sens. Environ.* **24**(3), 459–479 (1988).
29. D. Doxaran, P. Castaing, and S. J. Lavender, "Monitoring the maximum turbidity zone and detecting fine-scale turbidity features in the Gironde estuary using high spatial resolution satellite sensor (SPOT HRV, Landsat ETM+) data," *Int. J. Remote Sens.* **27**(11), 2303–2321 (2006).
30. V. S. Martins, C. C. F. Barbosa, L. A. S. de Carvalho, D. S. F. Jorge, F. L. Lobo, and E. M. L. M. Novo, "Assessment of atmospheric correction methods for Sentinel-2 MSI images applied to Amazon floodplain lakes," *Remote Sens.* **9**(4), 322 (2017).
31. S. Novoa, D. Doxaran, A. Ody, Q. Vanhellefont, V. Lafon, B. Lubac, and P. Gernez, "Atmospheric corrections and multi-conditional algorithm for multi-sensor remote sensing of suspended particulate matter in low-to-high turbidity levels coastal waters," *Remote Sens.* **9**(1), 61 (2017).
32. J. Wei, Z. Lee, R. Garcia, L. Zoffoli, R. A. Armstrong, Z. Shang, P. Sheldon, and R. F. Chen, "An assessment of Landsat-8 atmospheric correction schemes and remote sensing reflectance products in coral reefs and coastal turbid waters," *Remote Sens. Environ.* **215**, 18–32 (2018).
33. C. O. Ilori, N. Pahlevan, and A. Knudby, "Analyzing performances of different atmospheric correction techniques for Landsat 8: application for coastal remote sensing," *Remote Sens.* **11**(4), 469 (2019).
34. G. Zibordi, F. Mélin, and J.-F. Berthon, "A time-series of above-water radiometric measurements for coastal water monitoring and remote sensing product validation," *IEEE Geos. and Remote Sens. Lett.* **3**(1), 120–124 (2006).
35. M. Chami, B. Lafrance, B. Fougny, J. Chowdhary, T. Harmel, and F. Waquet, "OSOAA: a vector radiative transfer model of coupled atmosphere-ocean system for a rough sea surface application to the estimates of the directional variations of the water leaving reflectance to better process multi-angular satellite sensors data over the ocean," *Opt. Express* **23**(21), 27829–27852 (2015).
36. G. Zibordi, J.-F. Berthon, F. Mélin, D. D'Alimonte, and S. Kaitala, "Validation of satellite ocean color primary products at optically complex coastal sites: Northern Adriatic Sea, Northern Baltic Proper and Gulf of Finland," *Remote Sens. Environ.* **113**(12), 2574–2591 (2009).
37. G. Zibordi, B. Holben, I. Slutsker, D. Giles, D. D'Alimonte, F. Mélin, J.-F. Berthon, D. Vandemark, H. Feng, G. Schuster, B. E. Fabbri, S. Kaitala, and J. Seppälä, "AERONET-OC: A network for the validation of ocean color primary products," *J. Atmos. Ocean. Tech.* **26**(8), 1634–1651 (2009).
38. B. Nechad, K. G. Ruddick, and Y. Park, "Calibration and validation of a generic multisensor algorithm for mapping of total suspended matter in turbid waters," *Remote Sensing of Environment*. **114**(4), 854–866 (2010).
39. B. Lubac and H. Loisel, "Variability and classification of remote sensing reflectance spectra in the eastern English Channel and southern North Sea," *Remote Sens. Environ.* **110**(1), 45–58 (2007).
40. H. Loisel, X. Mériaux, A. Poteau, L. F. Artigas, B. Lubac, A. Gardel, J. Caillaud, and S. Lesourd, "Analyze of the inherent optical properties of French Guiana coastal waters for remote sensing applications," *J. Coast. Res.* **56**, 1532–1536 (2009).

41. V. Vantrepotte, H. Loisel, X. Mériaux, G. Neukermans, D. Dessailly, C. Jamet, E. Gensac, and A. Gardel, "Seasonal and inter-annual (2002-2010) variability of the suspended particulate matter as retrieved from satellite ocean color sensor over the French Guiana coastal waters," *J. Coast. Res.* **64**, 1750–1754 (2011).
42. C. Goyens, C. Jamet, and K. G. Ruddick, "Spectral relationships for atmospheric correction. I. Validation of red and near infra-red marine reflectance relationships," *Opt. Express* **21**(18), 21162–21175 (2013).
43. G. Thuillier, M. Hersé, D. Labs, T. Foujols, W. Peetermans, D. Gillotay, P. C. Simon, and H. Mandel, "The Solar Spectral Irradiance from 200 to 2400 nm as Measured by the SOLSPEC Spectrometer from the Atlas and Eureka Missions," *Sol. Phys.* **214**(1), 1–22 (2003).
44. E.P. Shettle and R.W. Fenn, "Models for the aerosols of the lower atmosphere and the effects of humidity variations on their optical properties", Report No. AFGL-TR-79-0214, Environmental Research Papers No.676, Bedford, MA: AF Geophysics Laboratory (1979).
45. C. Cox and W. Munk, "Measurement of the roughness of the sea surface from photographs of the Sun's glitter," *J. Opt. Soc. Am.* **44**(11), 838–850 (1954).
46. J. H. Ahn, Y. J. Park, W. Kim, B. Lee, and I. S. Oh, "Vicarious calibration of the geostationary ocean color imager," *Opt. Express* **23**(18), 23236–3258 (2015).
47. C. D. Mobley, J. Werdell, B. Franz, Z. Ahmad, and S. Bailey, "Atmospheric correction for satellite ocean color radiometry," A Tutorial and Documentation of the Algorithms Used by the NASA Ocean Biology Processing Group (2016).
48. H. R. Gordon and M. Wang, "Retrieval of water-leaving radiance and aerosol optical thickness over the oceans with SeaWiFS: a preliminary algorithm," *Appl. Opt.* **33**(3), 443–452 (1994).
49. H. Gordon, "Atmospheric correction of ocean color imagery in the earth observing system era," *J. Geophys. Res. Atmos.* **102**(D14), 17081–17106 (1997).
50. P. Koepke, "Effective reflectance of oceanic whitecaps," *Appl. Opt.* **23**(11), 1816–1824 (1984).
51. R. Frouin, M. Schwindling, and P.-Y. Deschamps, "Spectral reflectance of sea foam in the visible and near-infrared: In situ measurements and remote sensing implications," *J. Geophys. Res.* **101**(C6), 14361–14371 (1996).
52. S. Kay, J. D. Hedley, and S. Lavender, "Sun glint correction of high and low spatial resolution images of aquatic scenes: a review of methods for visible and near-infrared wavelengths," *Remote Sens.* **1**(4), 697–730 (2009).
53. S. W. Bailey, B. A. Franz, and P. J. Werdell, "Estimation of near-infrared water-leaving reflectance for satellite ocean color data processing," *Opt. Express* **18**(7), 7521–7527 (2010).
54. K. G. Ruddick, F. Ovidio, and M. Rijkeboer, "Atmospheric correction of SeaWiFS imagery for turbid coastal and inland waters," *Appl. Opt.* **39**(6), 897–912 (2000).
55. M. Wang, W. Shi, and L. Jiang, "Atmospheric correction using near-infrared bands for satellite ocean color data processing in the turbid western Pacific region," *Opt. Express* **20**(2), 741–753 (2012).
56. M. Wang and W. Shi, "The NIR-SWIR combined atmospheric correction approach for MODIS ocean color data processing," *Opt. Express* **15**(24), 15722–15733 (2007).
57. T. Schroeder, I. Behnert, M. Schaale, J. Fischer, and R. Doerffer, "Atmospheric correction algorithm for MERIS above case-2 waters," *Int. J. Remote Sens.* **28**(7), 1469–1486 (2007).
58. J. Brajarda, R. Santera, M. Crépon, and S. Thiria, "Atmospheric correction of MERIS data for case-2 waters using a neuro-variational inversion," *Remote Sens. Environ.* **126**, 51–61 (2012).
59. B. Han, H. Loisel, V. Vantrepotte, X. Mériaux, P. Bryère, S. Ouillon, D. Dessailly, Q. Xing, and J. Zhu, "Development of a semi-analytical algorithm for the retrieval of suspended particulate matter from remote sensing over clear to very turbid waters," *Remote Sens.* **8**(3), 211 (2016).
60. J.-M. Nicolas, P.-Y. Deschamps, H. Loisel, and C. Moulin, "ATBD, Atmospheric correction algorithms, POLDER2 Ocean Color," [https://polder-mission.cnes.fr/en/POLDER/SCIEPROD/oc\\_calib.htm](https://polder-mission.cnes.fr/en/POLDER/SCIEPROD/oc_calib.htm) (2005).
61. J. H. Ahn, Y. J. Park, J. H. Ryu, and B. Lee, "Development of atmospheric correction algorithm for Geostationary Ocean Color Imager (GOCI)," *Ocean Sci. J.* **47**(3), 247–259 (2012).