



HAL
open science

Decision support tool for stormwater disconnection support tool for stormwater disconnection

Violeta A. Montoya-Coronado, Pascal Molle, Damien Tedoldi, H el ene
Castebrunet, Gislain Lipeme Kouyi

► **To cite this version:**

Violeta A. Montoya-Coronado, Pascal Molle, Damien Tedoldi, H el ene Castebrunet, Gislain Lipeme Kouyi. Decision support tool for stormwater disconnection support tool for stormwater disconnection. MULTISOURCE, Jul 2022, Lyon, France. 2022. hal-04330254

HAL Id: hal-04330254

<https://hal.science/hal-04330254v1>

Submitted on 4 Jan 2024

HAL is a multi-disciplinary open access archive for the deposit and dissemination of scientific research documents, whether they are published or not. The documents may come from teaching and research institutions in France or abroad, or from public or private research centers.

L'archive ouverte pluridisciplinaire **HAL**, est destin ee au d ep ot et  a la diffusion de documents scientifiques de niveau recherche, publi es ou non,  emanant des  tablissements d'enseignement et de recherche fran ais ou  trangers, des laboratoires publics ou priv es.



Distributed under a Creative Commons Attribution - NonCommercial - NoDerivatives 4.0
International License

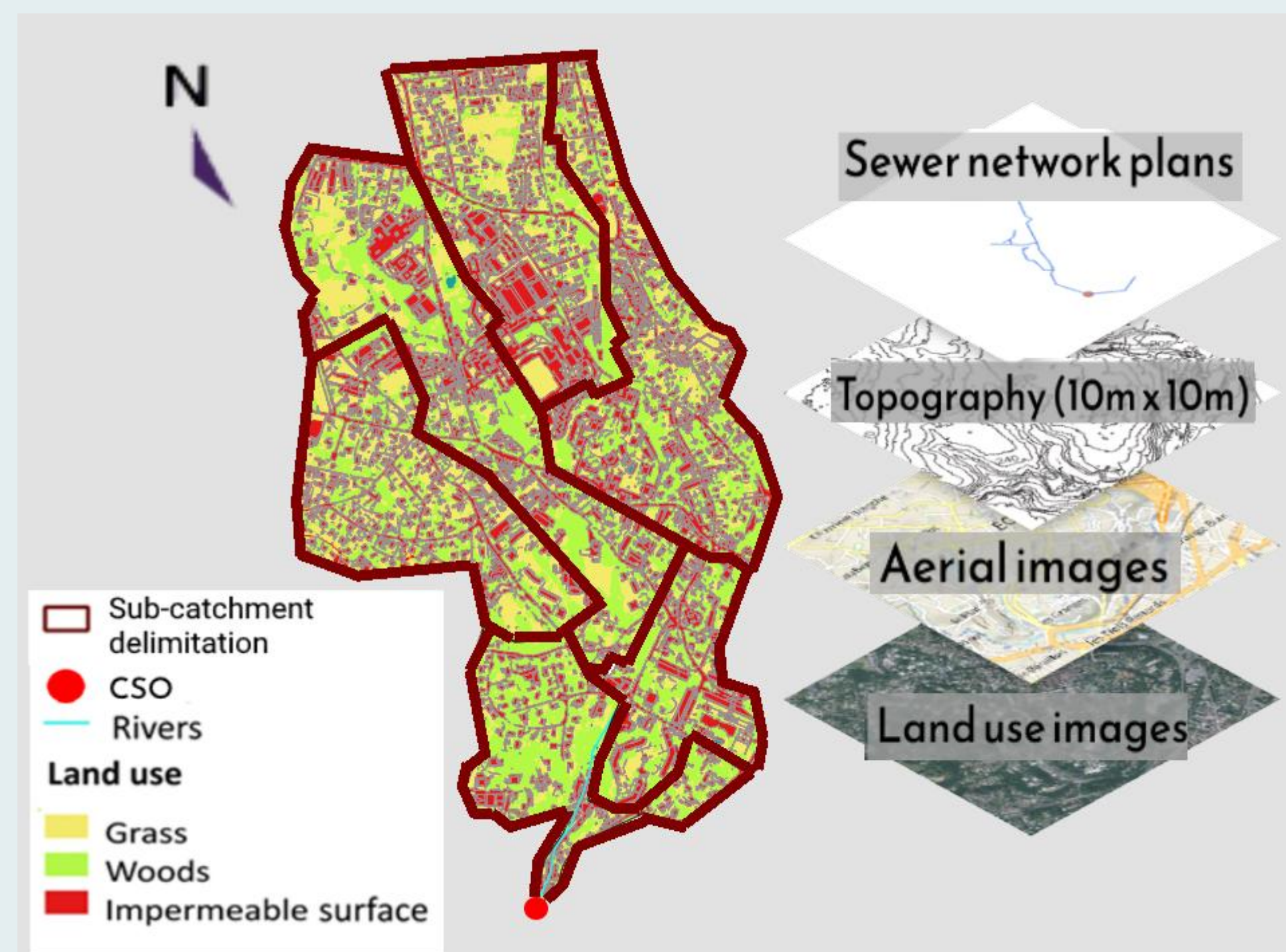


MULTISOURCE

Decision support tool for stormwater disconnection

The disconnection concept focuses on the principle of correcting the consequences of previous centralized urban water management by reintegrating water cycle in the city. Solutions are based on infiltration, storage and evapotranspiration for stormwater and local reuse for wastewater.

The main objective is to identify the sub-catchment(s) and its associated degree of disconnection to reduce combined sewer overflows (CSO) volume, frequency and pollutants loads.



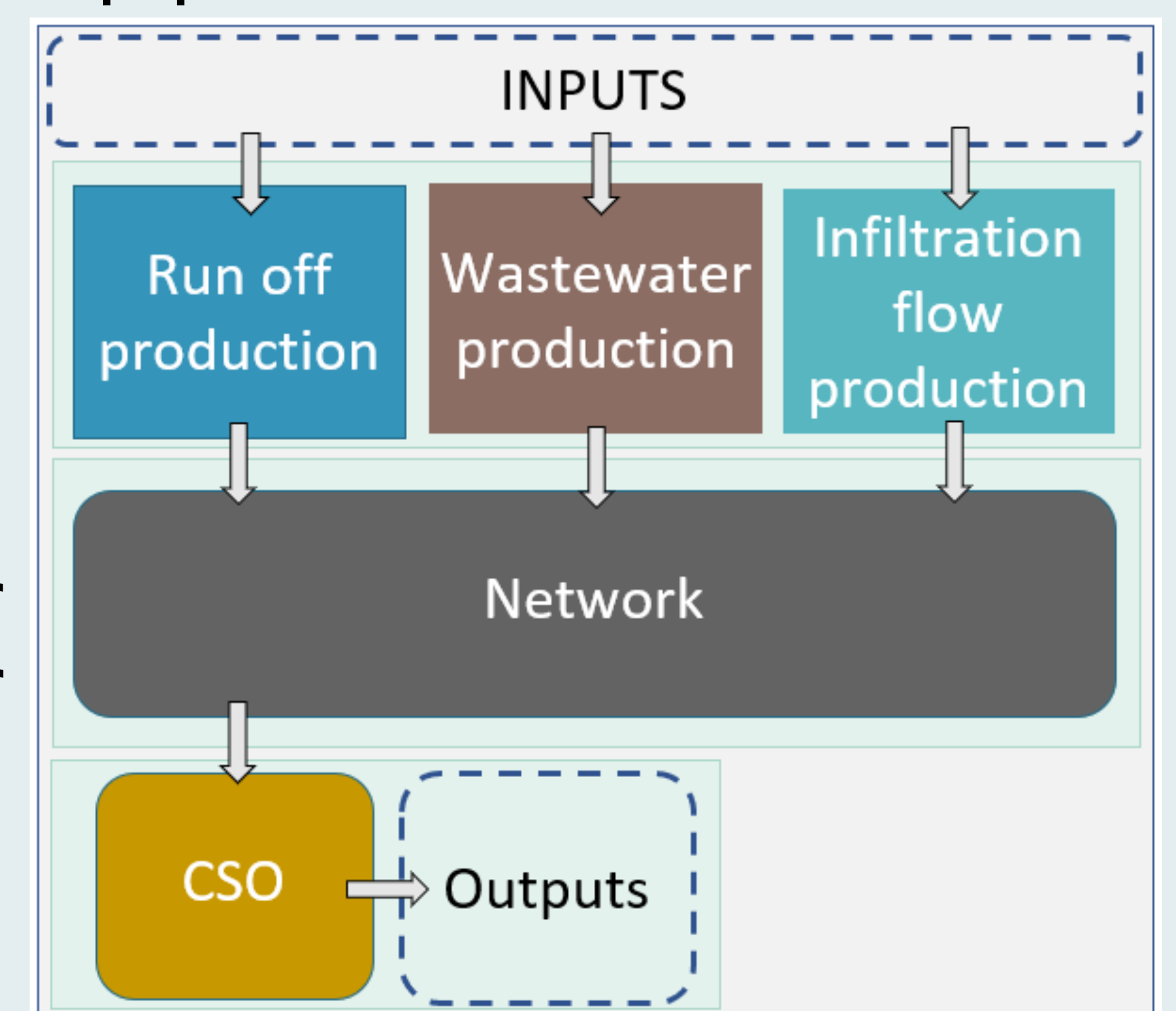
Ecully catchment delineation (All needed data available)

1) Delineation of (sub-)catchment areas according to available geographic information

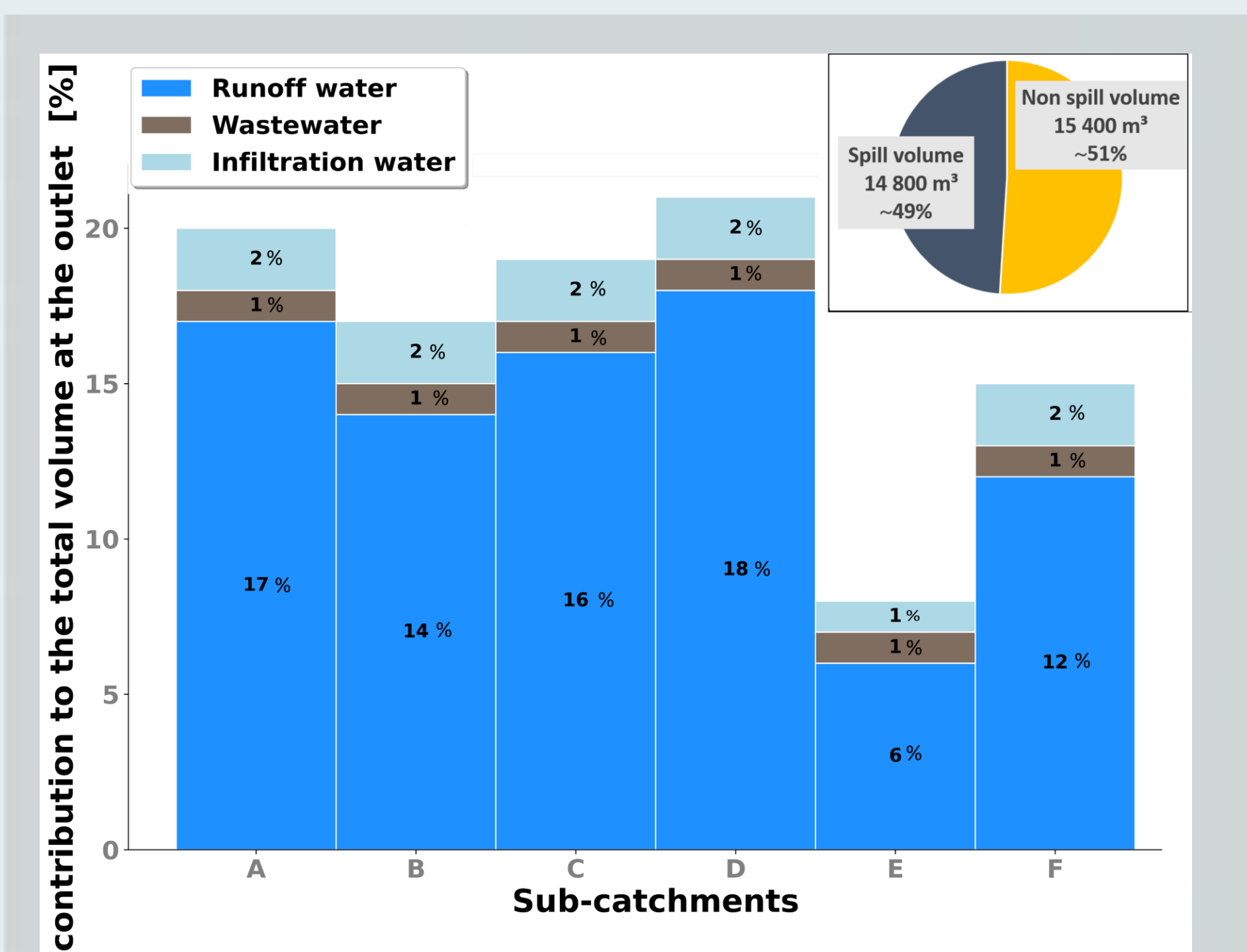
A preliminary **delineation of contributing areas to CSO** is made from aerial views (excluding natural or artificial frontiers). Whenever necessary, we propose to mimic the real sewer network by means of a fictive gravity line following the main roads direction. Boundaries between sub-catchments are defined considering the natural path flow direction (D8 method) or by the equidistance between two pipes.

2) Hydrological & hydraulic model for CSO simulation

Aims to represent the physical processes of runoff and discharges in urban areas provided by a combined sewer system. Is a semi-distributed model based on i) the rainfall-runoff model, ii) a linear reservoir as a transfer function, and iii) a spilled flow equation for CSO simulation. It provides indicators on CSO annual volume and frequency.



Model overview



Water balance during a rainfall event (06/08/2007); Ecully catchment.

3) Optimization of disconnection scenarios

Development of an algorithm allowing to indicate :

- i) **Where** disconnection would be suitable for CSO mitigation
- ii) **The volume** of runoff and/or wastewater that should be disconnected from the sewer system to fulfill local compliances.

Violeta A. Montoya-Coronado*, Pascal Molle**, Damien Tedoldi*, H el ene Castebrunet*, Gislain Lipeme Kouyi*
* UNIV LYON, INSA Lyon, Waste Water Environment and Pollution laboratory, Villeurbanne, France
**INRAE, Research Unit REVERSAAL, Villeurbanne, France



This project has received funding from the European Union's Horizon H2020 innovation action programme under grant agreement 101003527.

MultisourceEU

www.multisource.eu

Multisource-eu

info@multisource.eu