



**HAL**  
open science

# Stochastic model of cell migration over curved substrate

Gildas Carlin, Ian Manificier, Jean-Louis Milan

► **To cite this version:**

Gildas Carlin, Ian Manificier, Jean-Louis Milan. Stochastic model of cell migration over curved substrate. Centuri Day, Dec 2023, Marseille, France. hal-04319160

**HAL Id: hal-04319160**

**<https://hal.science/hal-04319160v1>**

Submitted on 2 Dec 2023

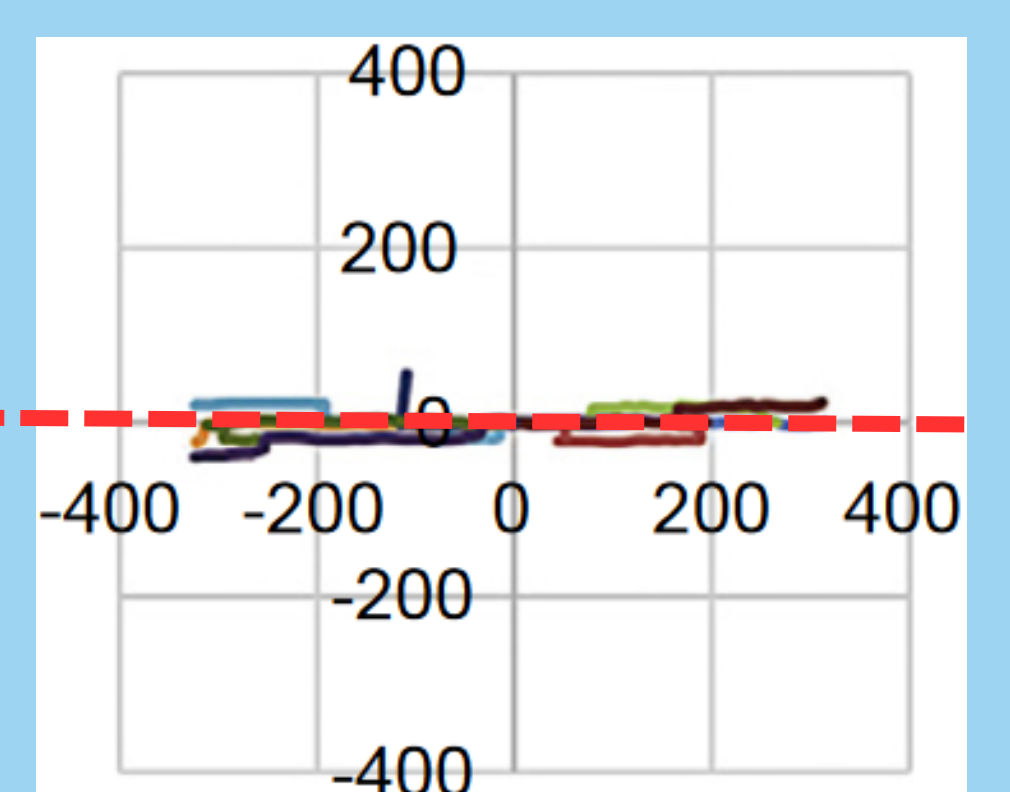
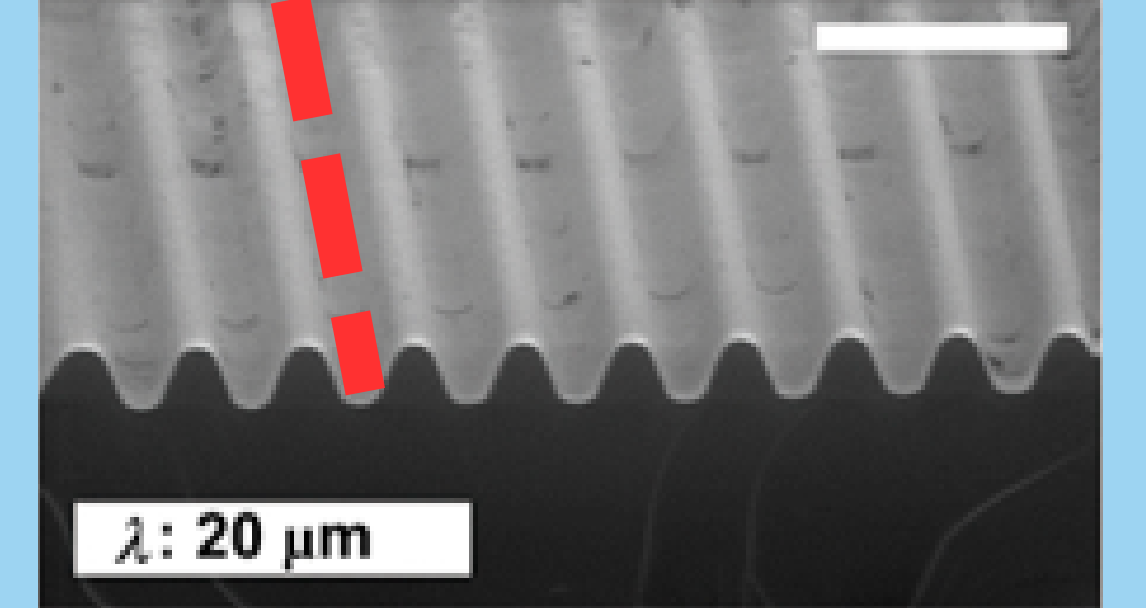
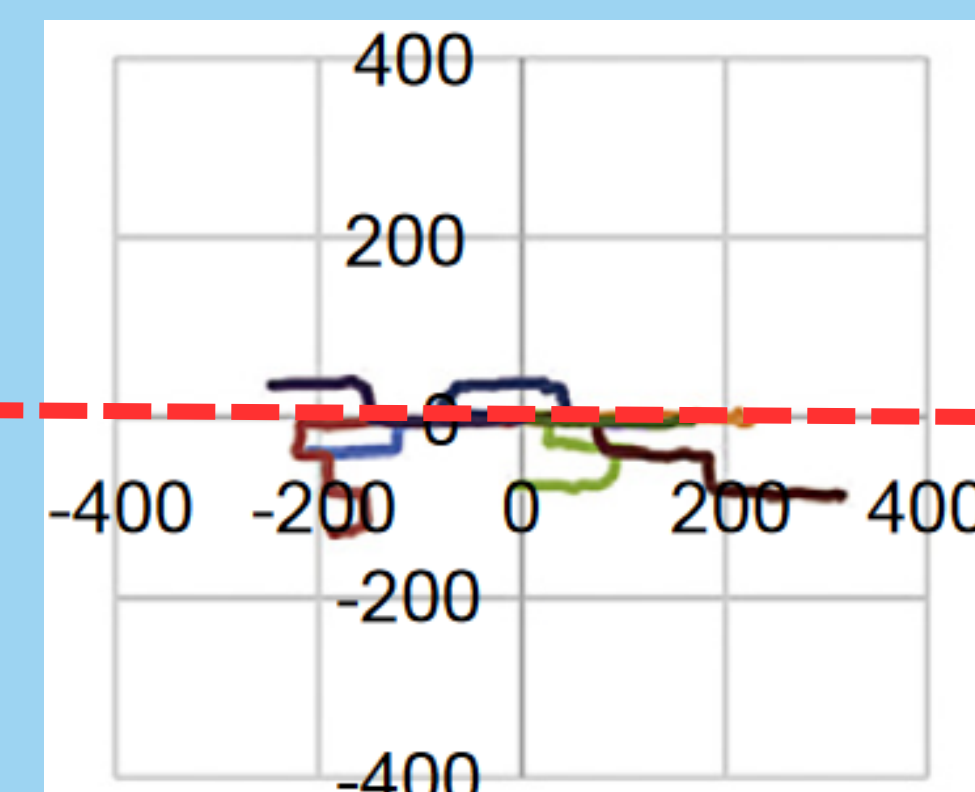
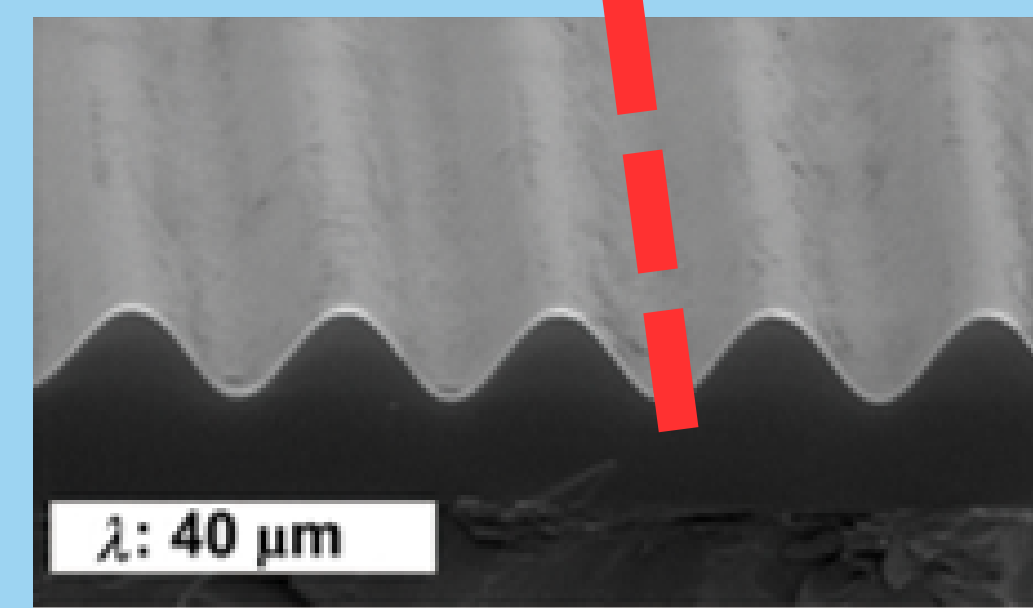
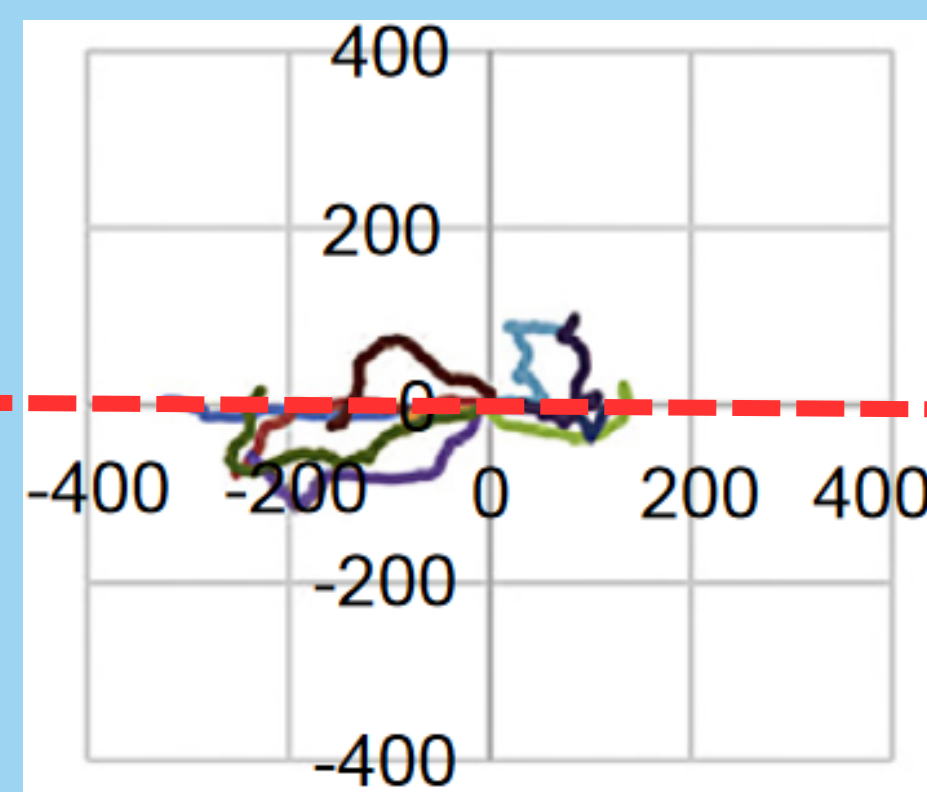
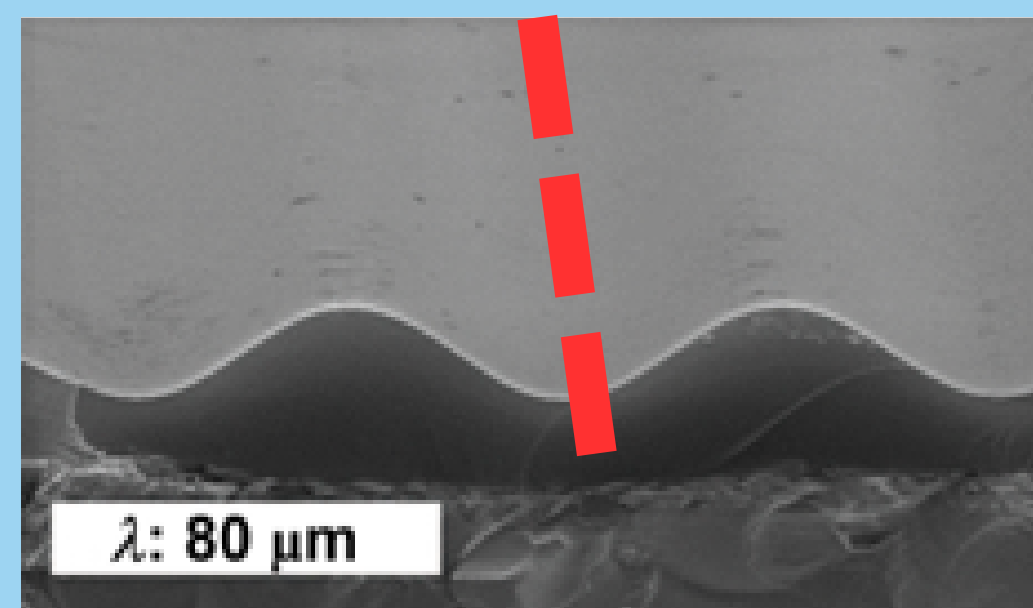
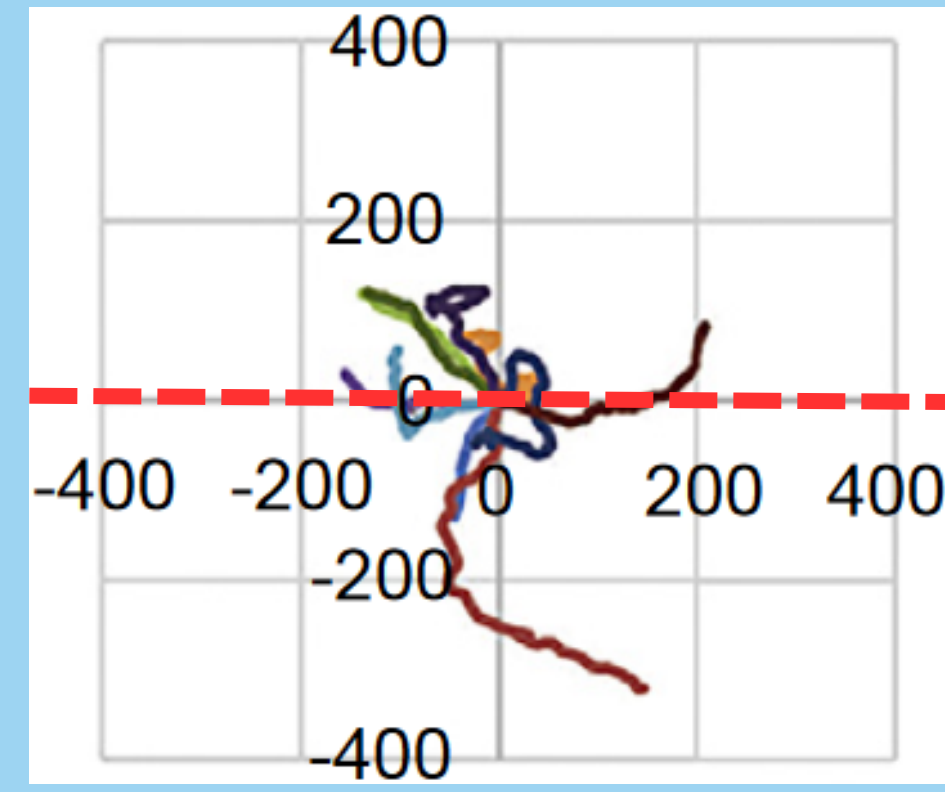
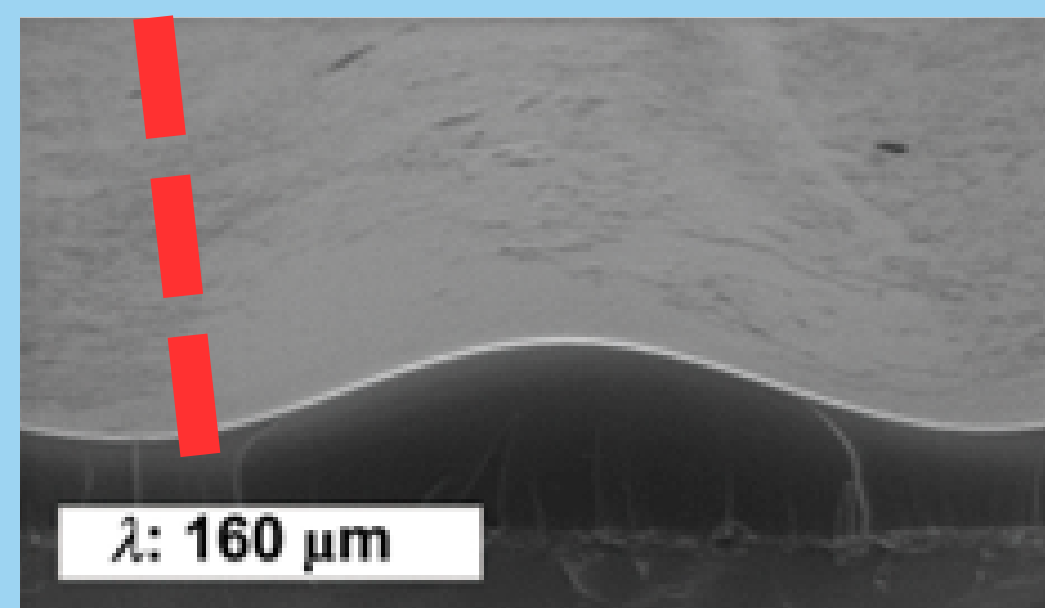
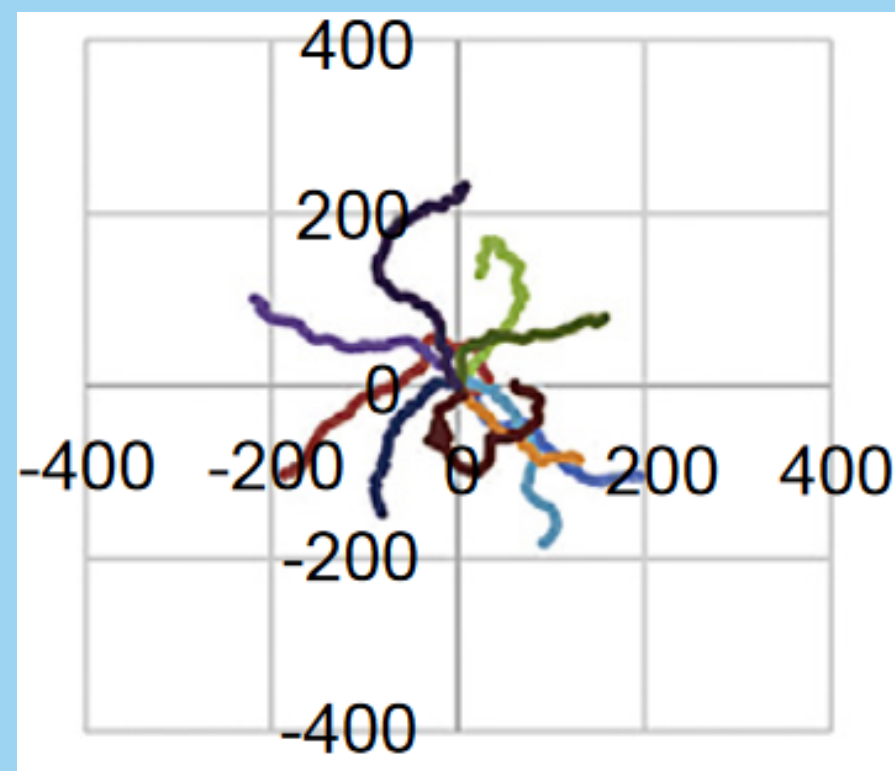
**HAL** is a multi-disciplinary open access archive for the deposit and dissemination of scientific research documents, whether they are published or not. The documents may come from teaching and research institutions in France or abroad, or from public or private research centers.

L'archive ouverte pluridisciplinaire **HAL**, est destinée au dépôt et à la diffusion de documents scientifiques de niveau recherche, publiés ou non, émanant des établissements d'enseignement et de recherche français ou étrangers, des laboratoires publics ou privés.

## Trajectories of T-cells on sinusoidal substrate

$$h(x, y) = A \cos\left(\frac{2\pi}{\lambda} x\right)$$

Flat substrate (control)



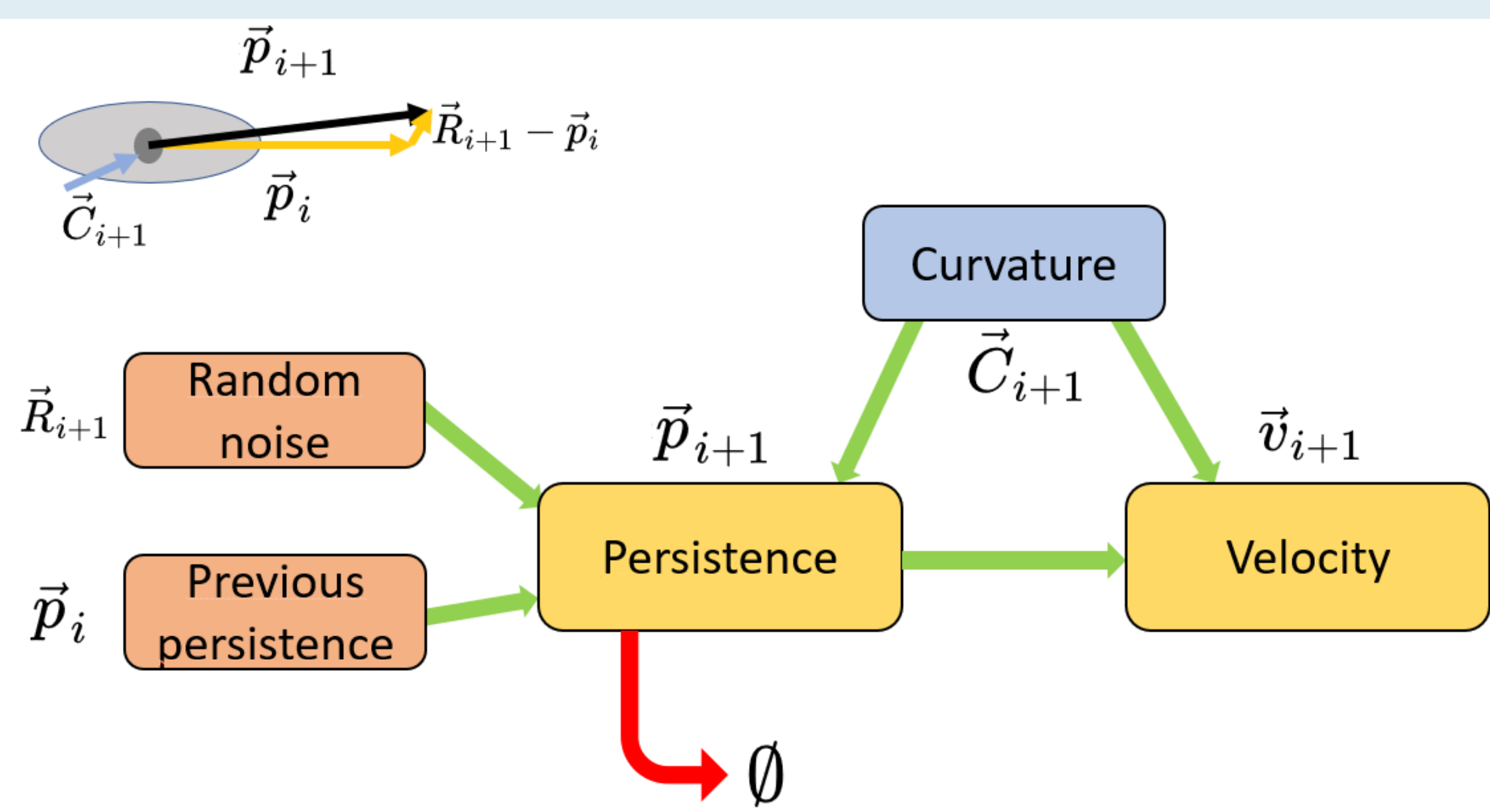
Scale bar : 50µm

The greater the curvature, the greater cell migration is contained in the valleys of the substrate [1]. The cell is triggered by cell-scale curvature, this phenomenon named "curvotaxis" leads cells toward concave areas [2].

## Does the curvature triggers inner signal pathways or limits mechanically cell migration?

### Development of a stochastic agent-based model

#### Cell Dynamic



$$\begin{cases} \tau \frac{d\vec{p}}{dt} = v_{\Delta t_r} \hat{\theta} - \vec{p} + \beta \vec{C} \\ \vec{v} = \vec{p} + (1 - \beta) \vec{C} \\ \frac{d\vec{x}}{dt} = \vec{v} \end{cases}$$

Every time step  $\Delta t_r$  :

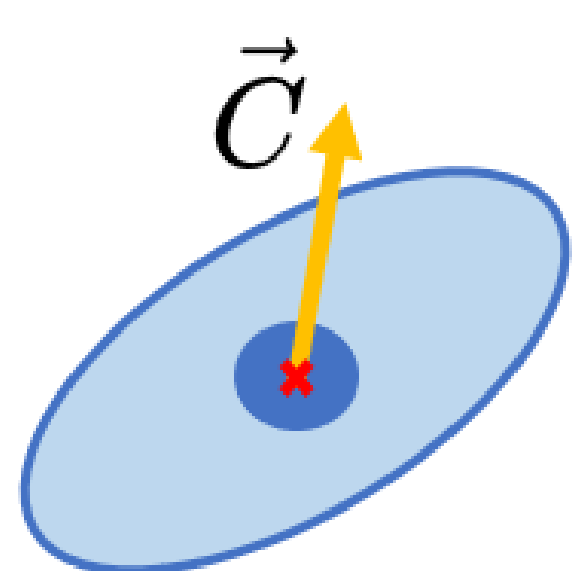
$v_{\Delta t_r}$  is drawn following  $\mathcal{U}_{[0, v_m]}$

$\arg(\hat{\theta})$  is drawn following  $\mathcal{U}_{[0, 2\pi]}$

#### What is the strategy of the cell to measure curvature ?

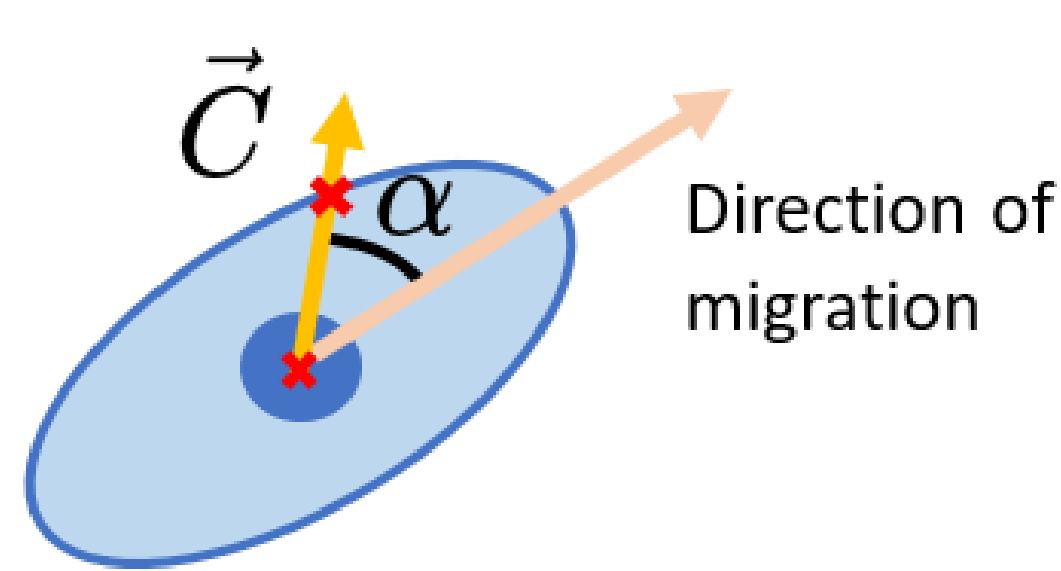
Mean curvature :  $H(x, y) = \frac{h_{,xx}}{2(1 + h_{,x}^2)^{3/2}}$

#### Local metric



$$\vec{C} = \gamma \text{grad} H$$

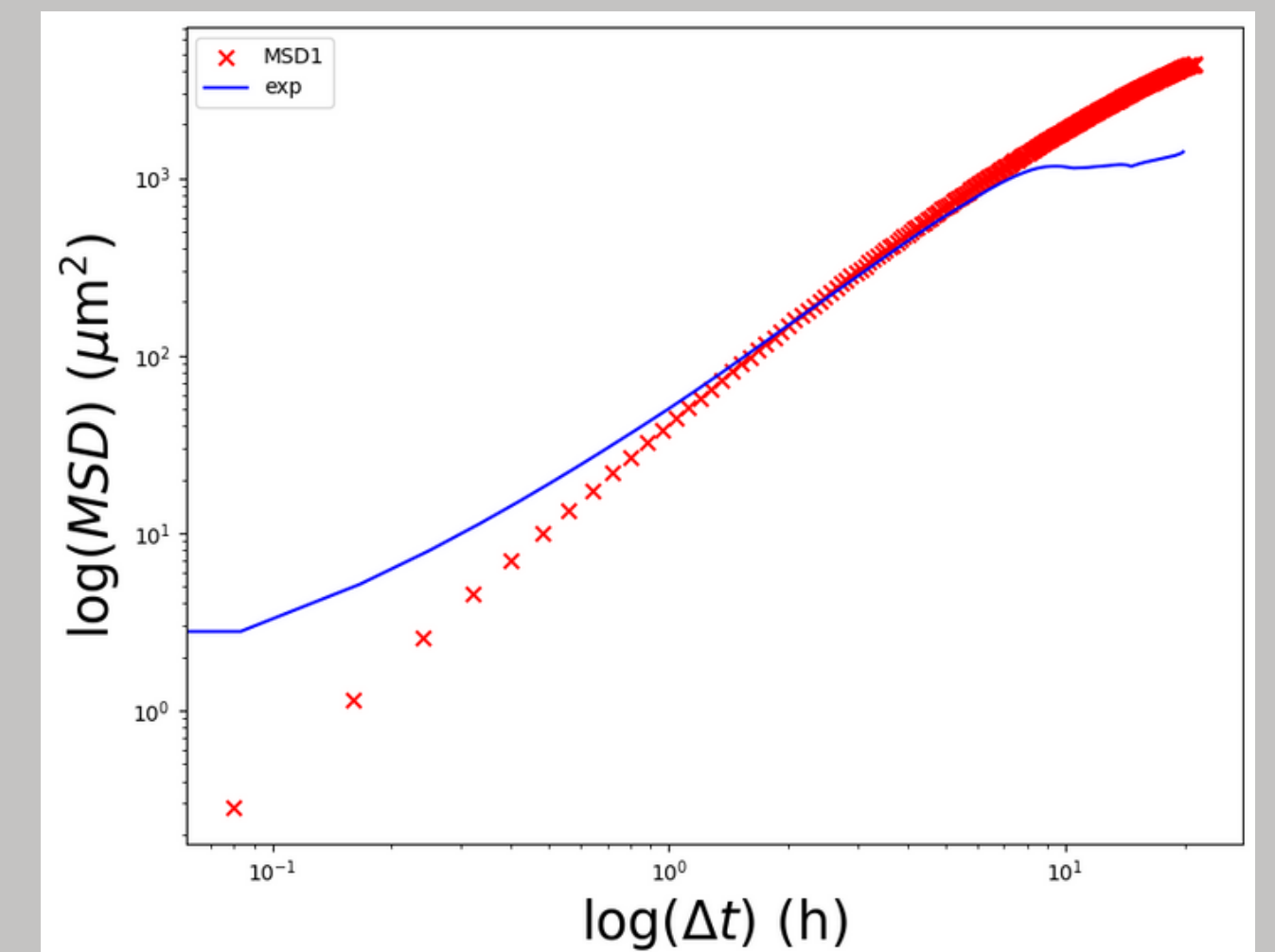
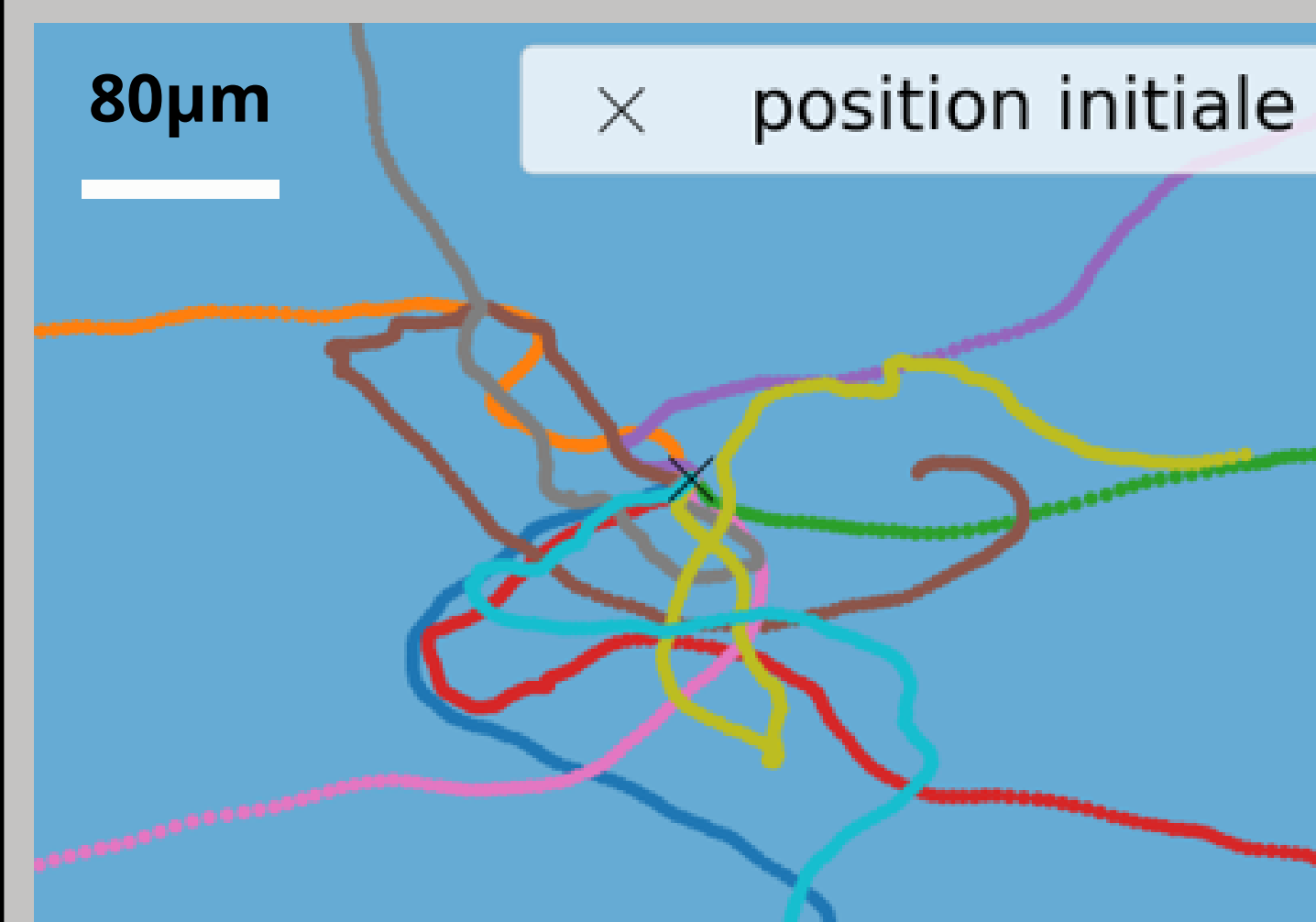
#### Cell-scale metric



$$\vec{C} = \max_{\alpha} \frac{|H_0 - H_{\hat{n}}|}{a} \hat{n}$$

### Results

#### Does the model behaves like cells ? a flat substrate study

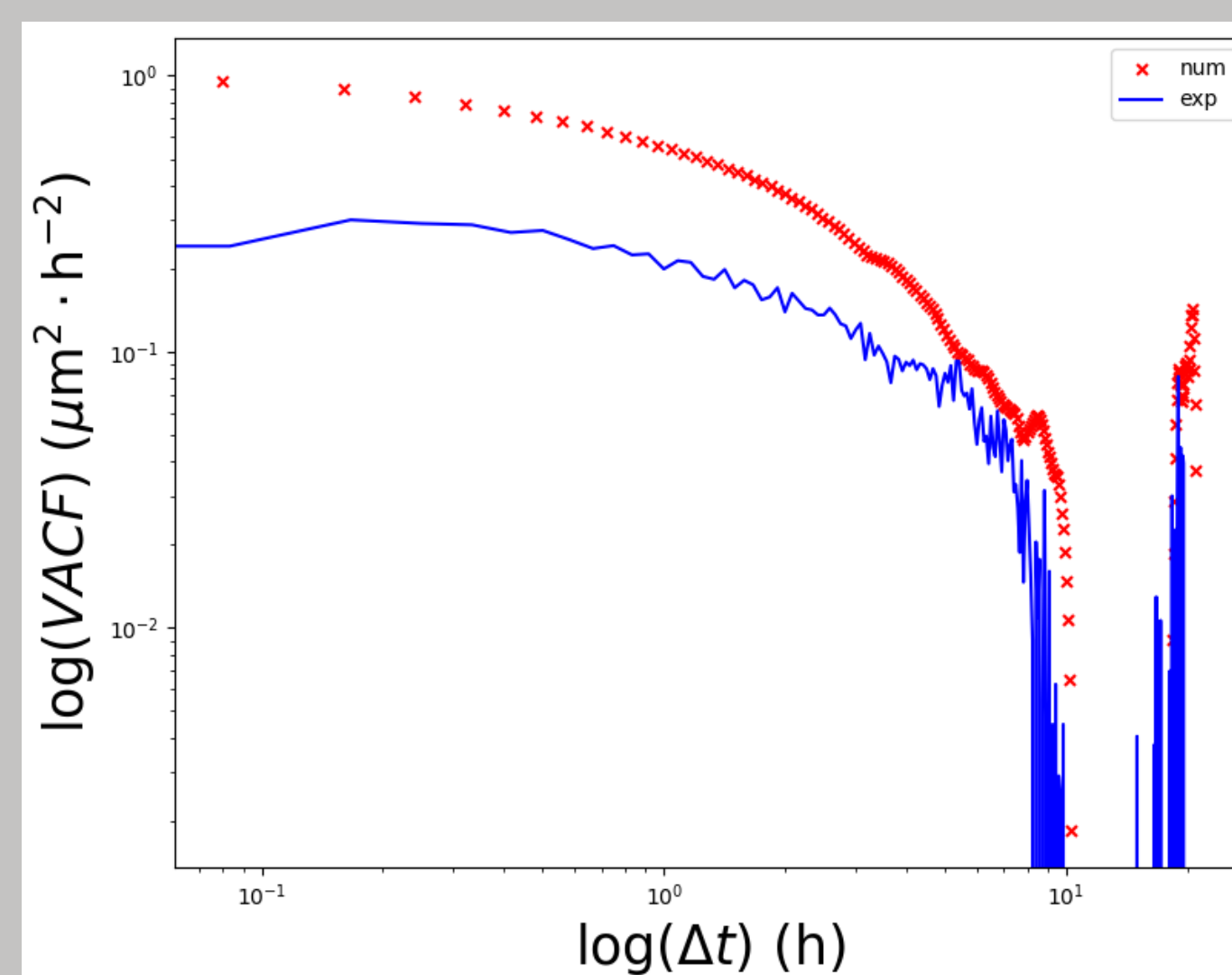


Validation of the model on flat substrate :

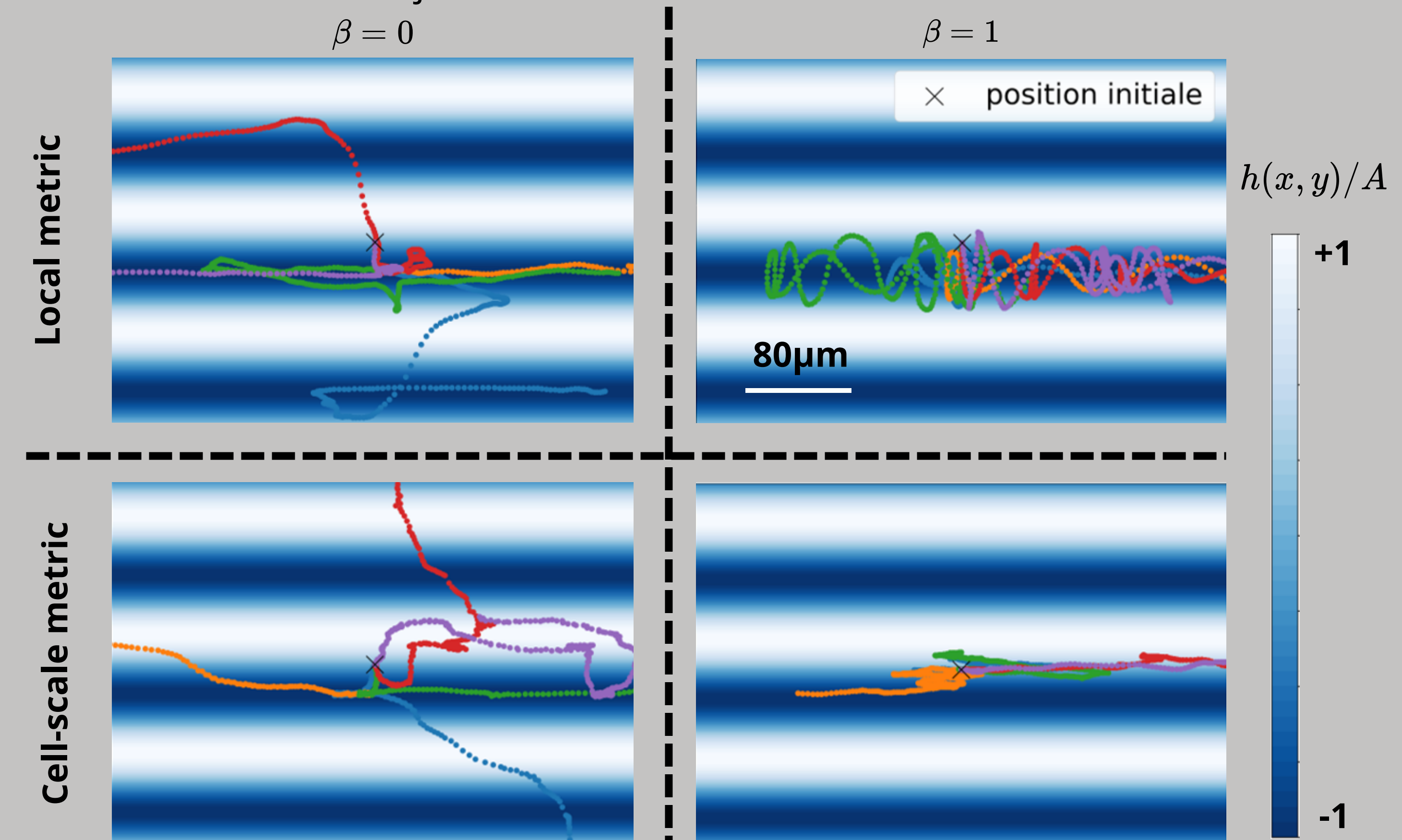
Mean Square Displacement (MSD) and Velocity Autocorrelation Function (VACF) are calculated (red curves) and compared with experimental data (blue curves) [3] --> **the model behaves like cells**

It gives parameters independant with curvature

$$\begin{aligned} \Delta t_r &= 0, 2h \\ \tau &= 2, 5h \\ v_m &= 50 \mu\text{m} \cdot h^{-1} \end{aligned}$$



#### Does the curvature activates signal pathways ( $\beta=1$ ) or not ( $\beta=0$ ) ? trajectories of cells on curved substrate



[1] K. H. Song, S. J. Park, D. S. Kim, and J. Doh. Sinusoidal wavy surfaces for curvature-guided migration of T lymphocytes. *Biomaterials*, 51 :151–160, 2015.

#### Ref.

[2] L. Pieuchot, J. Marteau, A. Guignandon, T. Dos Santos, I. Brigaud, P.-F. Chauvy, T. Cloatre, A. Ponche, T. Petithory, P. Rougerie, M. Vassaux, J.-L. Milan, N. T. Wakhloo, A. Spangenberg, M. Bigerelle, and K. Anselme. Curvotaxis directs cell migration through cell-scale curvature landscapes. *Nature Communications*, 9(1) :3995, 2018.

[3] G. Passucci, M. E. Brasch, J. H. Henderson, V. Zaburdaev, and M. L. Manning. Identifying the mechanism for superdiffusivity in mouse fibroblast motility. *PLoS Computational Biology*, 15(2) :e1006732, 2019.