



**HAL**  
open science

# Synthesis and characterization of CoCrNi and Fex(CoCrNi)<sub>1-X</sub> high entropy alloy thin films with unique atomic structures and enhanced mechanical properties

Arjun Bharath Curam, Vianney Mille, Grégory Abadias, Philippe Djemia,  
Christian Ricolleau, Matteo Ghidelli

## ► To cite this version:

Arjun Bharath Curam, Vianney Mille, Grégory Abadias, Philippe Djemia, Christian Ricolleau, et al.. Synthesis and characterization of CoCrNi and Fex(CoCrNi)<sub>1-X</sub> high entropy alloy thin films with unique atomic structures and enhanced mechanical properties. École d'été - Cargèse IESC - École HEA Métallurgie, Sep 2023, Cargèse, France. . hal-04308840

**HAL Id: hal-04308840**

**<https://hal.science/hal-04308840v1>**

Submitted on 27 Nov 2023

**HAL** is a multi-disciplinary open access archive for the deposit and dissemination of scientific research documents, whether they are published or not. The documents may come from teaching and research institutions in France or abroad, or from public or private research centers.

L'archive ouverte pluridisciplinaire **HAL**, est destinée au dépôt et à la diffusion de documents scientifiques de niveau recherche, publiés ou non, émanant des établissements d'enseignement et de recherche français ou étrangers, des laboratoires publics ou privés.

# Synthesis and characterization of CoCrNi and $\text{Fe}_x(\text{CoCrNi})_{1-x}$ high entropy alloy thin films with unique atomic structures and enhanced mechanical properties

Arjun Bharath Curam<sup>1,2\*</sup>, Vianney Mille<sup>1</sup>, Gregory Abadias<sup>3</sup>, Philippe Djemia<sup>1</sup>, Christian Ricolleau<sup>2</sup>, Matteo Ghidelli<sup>1</sup>

<sup>1</sup>LSPM-CNRS, Laboratoire des Sciences des Procédés et des Matériaux, Université Sorbonne Paris Nord

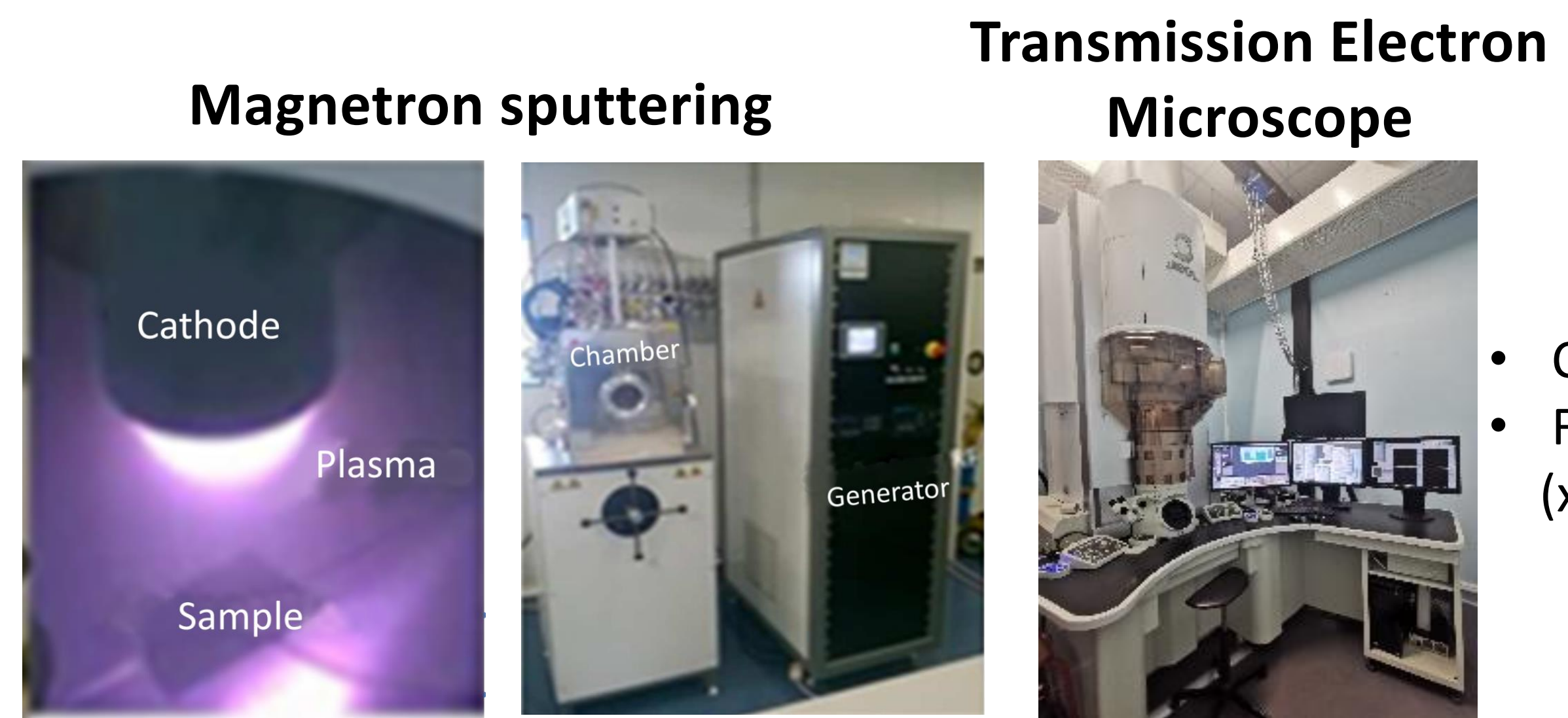
<sup>2</sup>MPQ, Laboratoire Matériaux Et Phénomènes Quantiques, Université Paris Cité

<sup>3</sup>Institut Pprime-CNRS, Université de Poitiers-ISA ENSMA

\* arjun.curam@lspm.cnrs.fr

## Context & Objective

Compositionally complex CoCrNi thin films have reported enhanced values of hardness (up to 10 GPa) and elastic modulus (up to 250 GPa), due to a peculiar nanotwinned structure and columnar grains with coherent twin boundaries [1]. The addition of Fe – to form  $\text{Fe}_x(\text{CoCrNi})_{1-x}$  – leads to a further enhancement of the mechanical properties (Hardness >11 GPa) due to the stabilization of the FCC phase and the formation of a Cr-rich  $\sigma$  phase [2] with a small grain size of ~20 nm [3]. However, studies on the film growth mechanisms and the relationship of atomic-microstructure and mechanical behaviour have been poorly explored. Here, we deposited CoCrNi and  $\text{Fe}_x(\text{CoCrNi})_{1-x}$  thin films with controlled thicknesses from 15 up to 700 nm, to investigate the effect Fe on the atomic structural evolution, the relationship with mechanical properties, while exploring early-stage film growth regime.

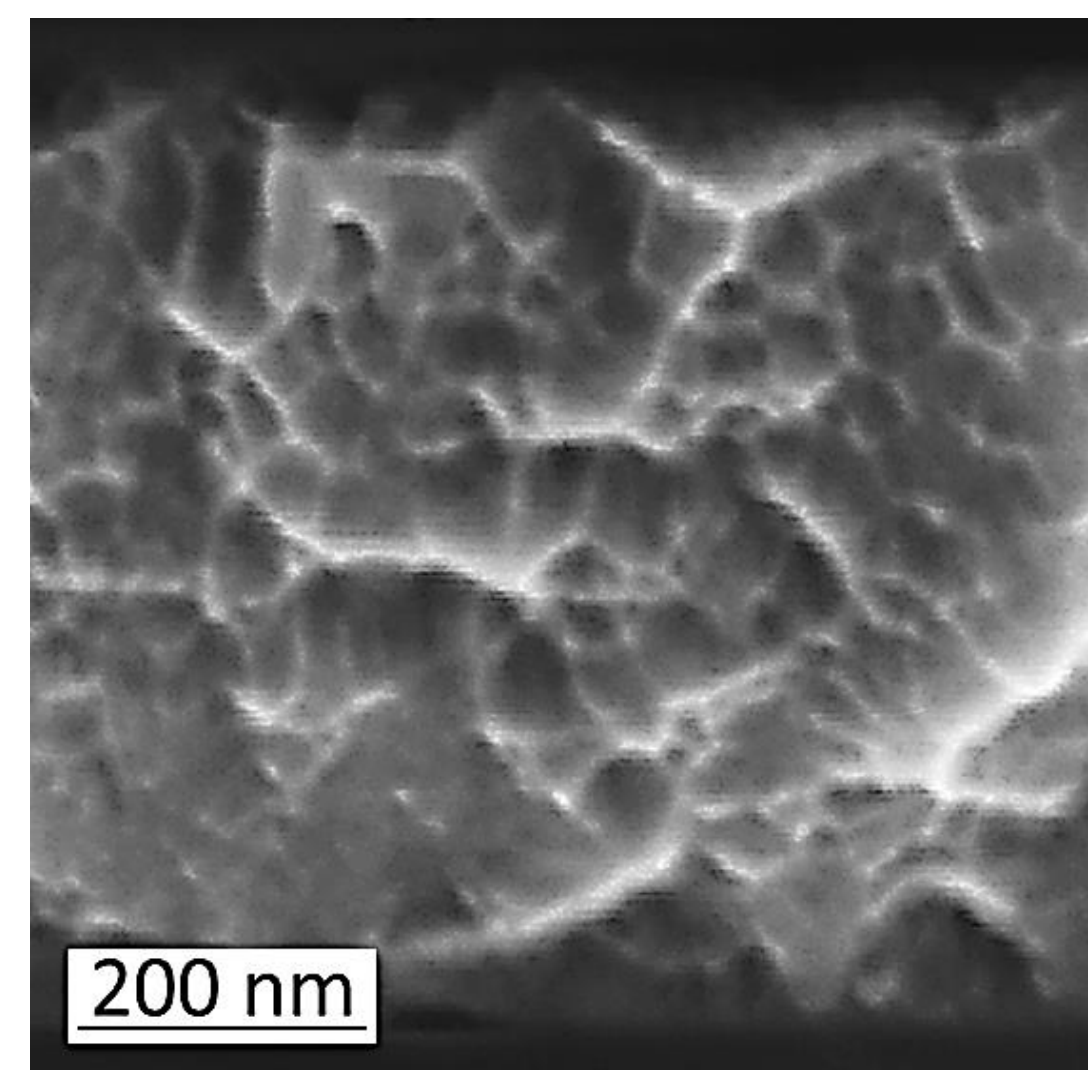
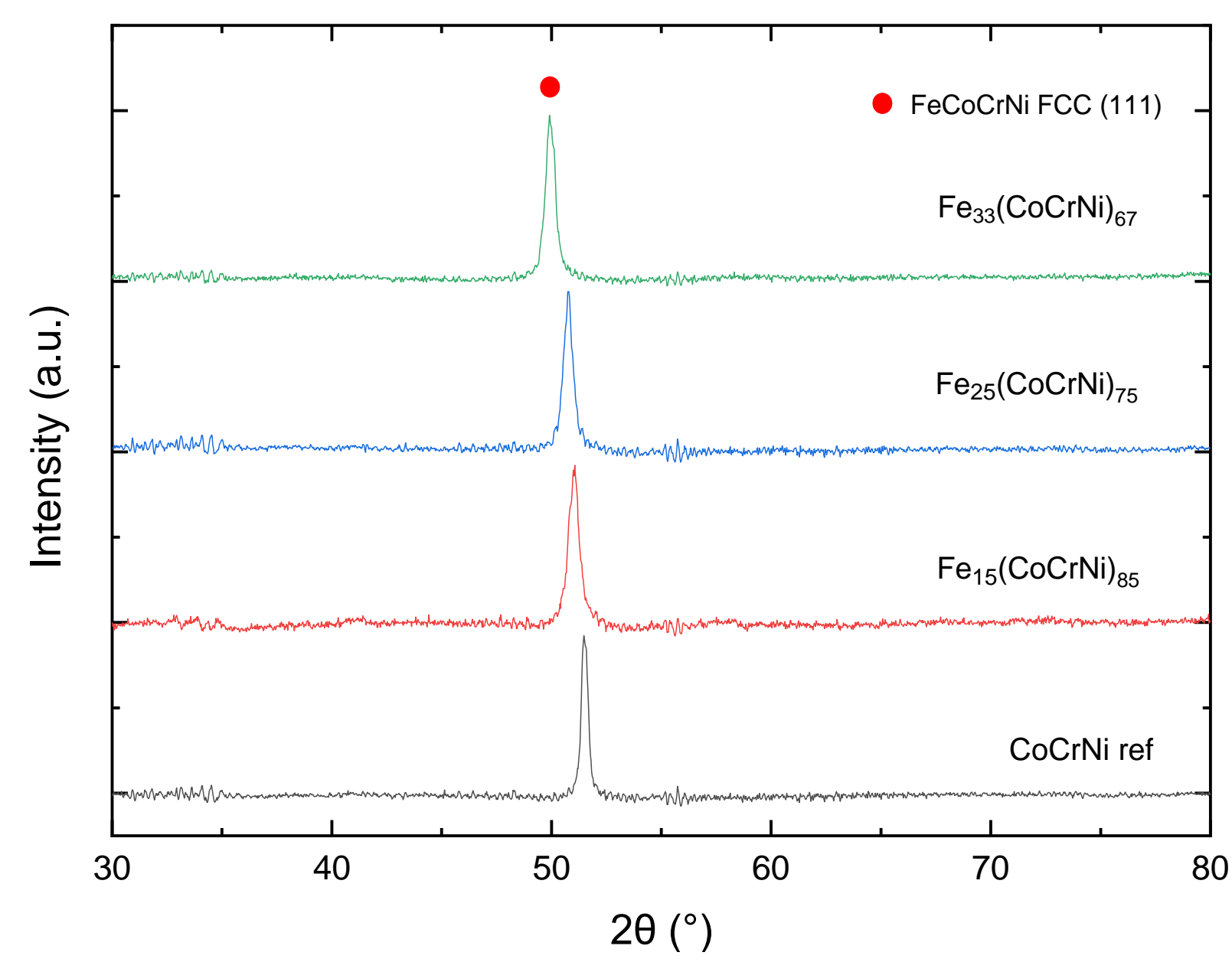


## Compositions

- CoCrNi
- $\text{Fe}_x(\text{CoCrNi})_{1-x}$  (x= 0, 15, 25, 33 at.%)

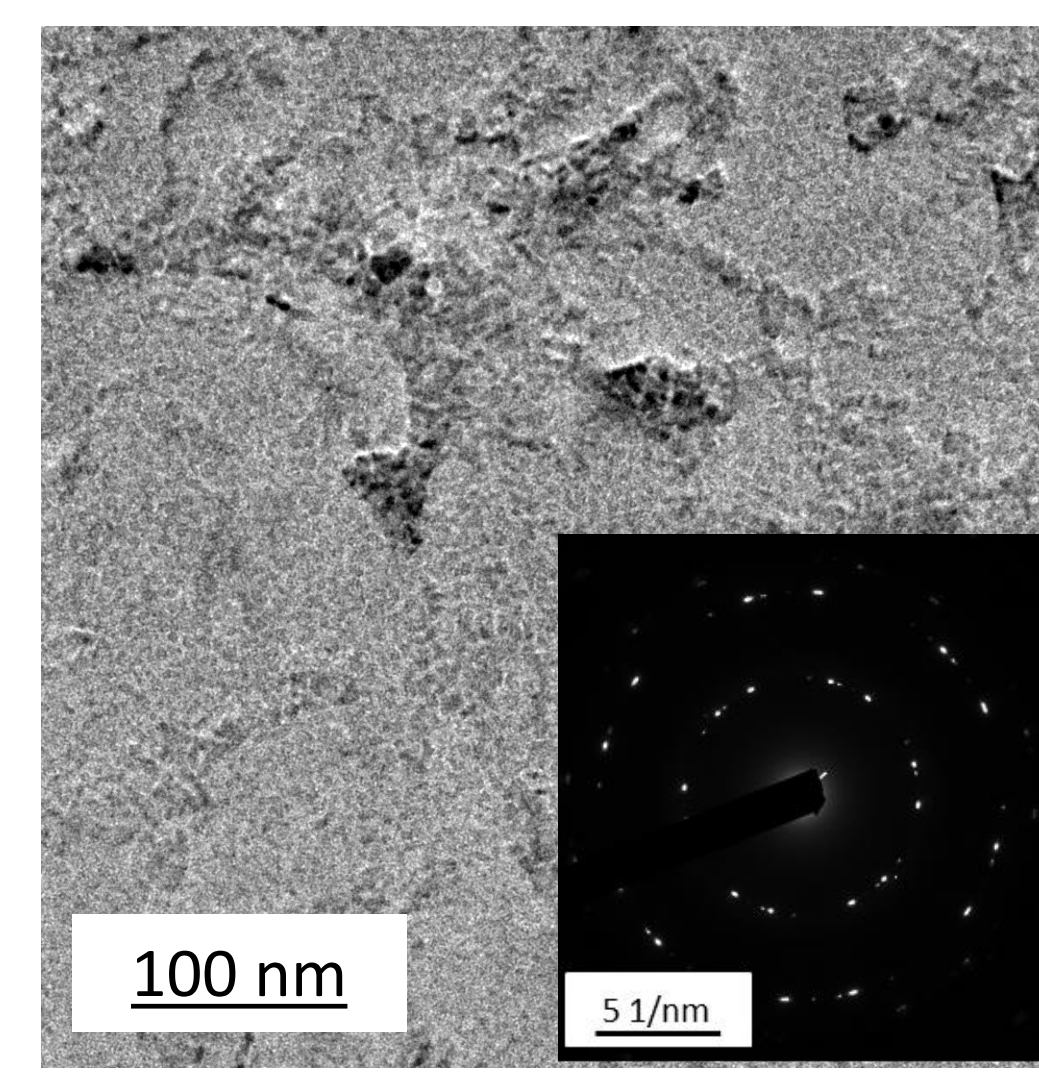
## Structural characterization

### X-Ray Diffraction (XRD) Co K $\alpha$ ( $\lambda = 1.7902 \text{ \AA}$ ) Scanning Electron Microscopy (SEM)

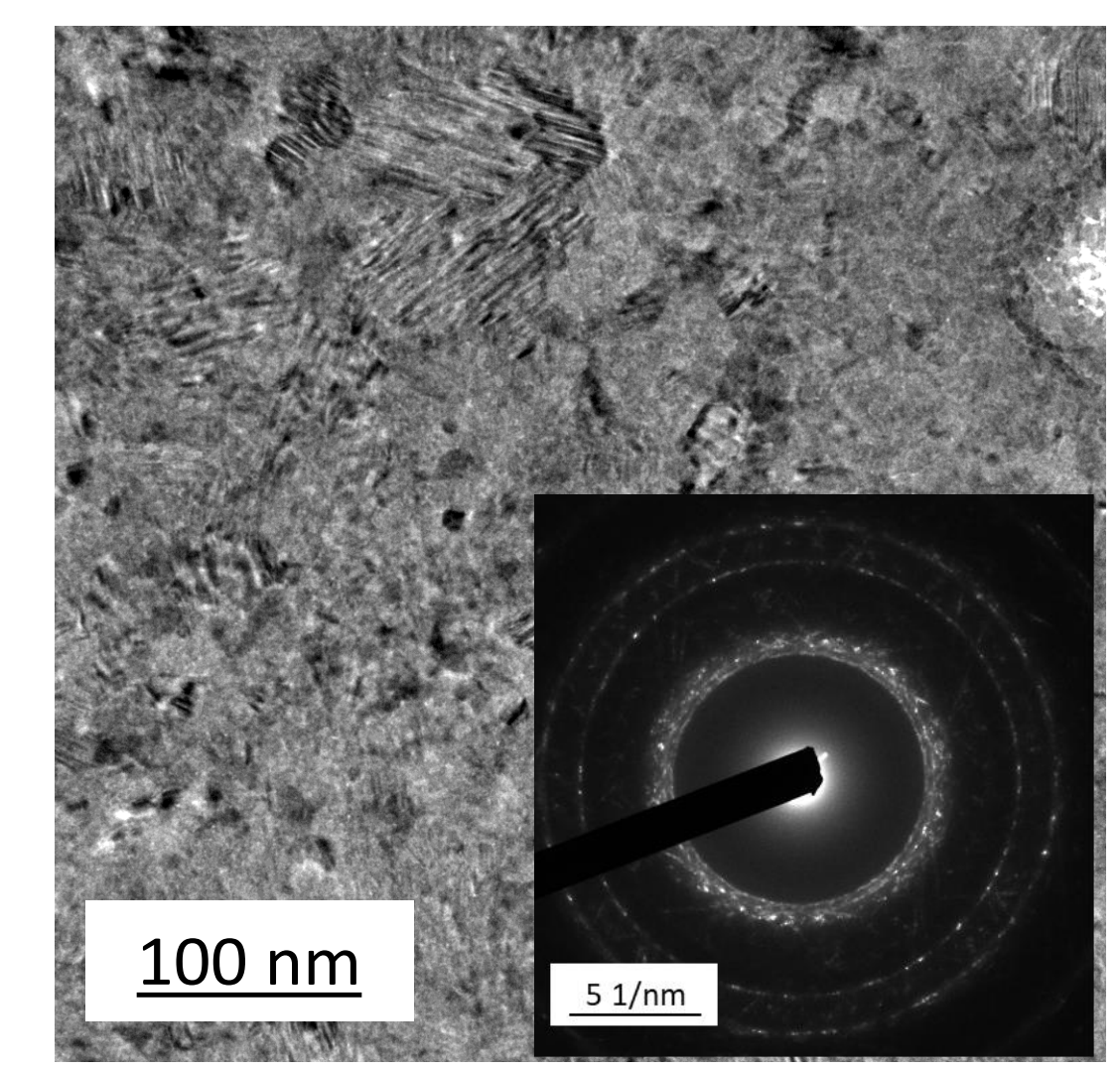


CoCrNi (630 nm)

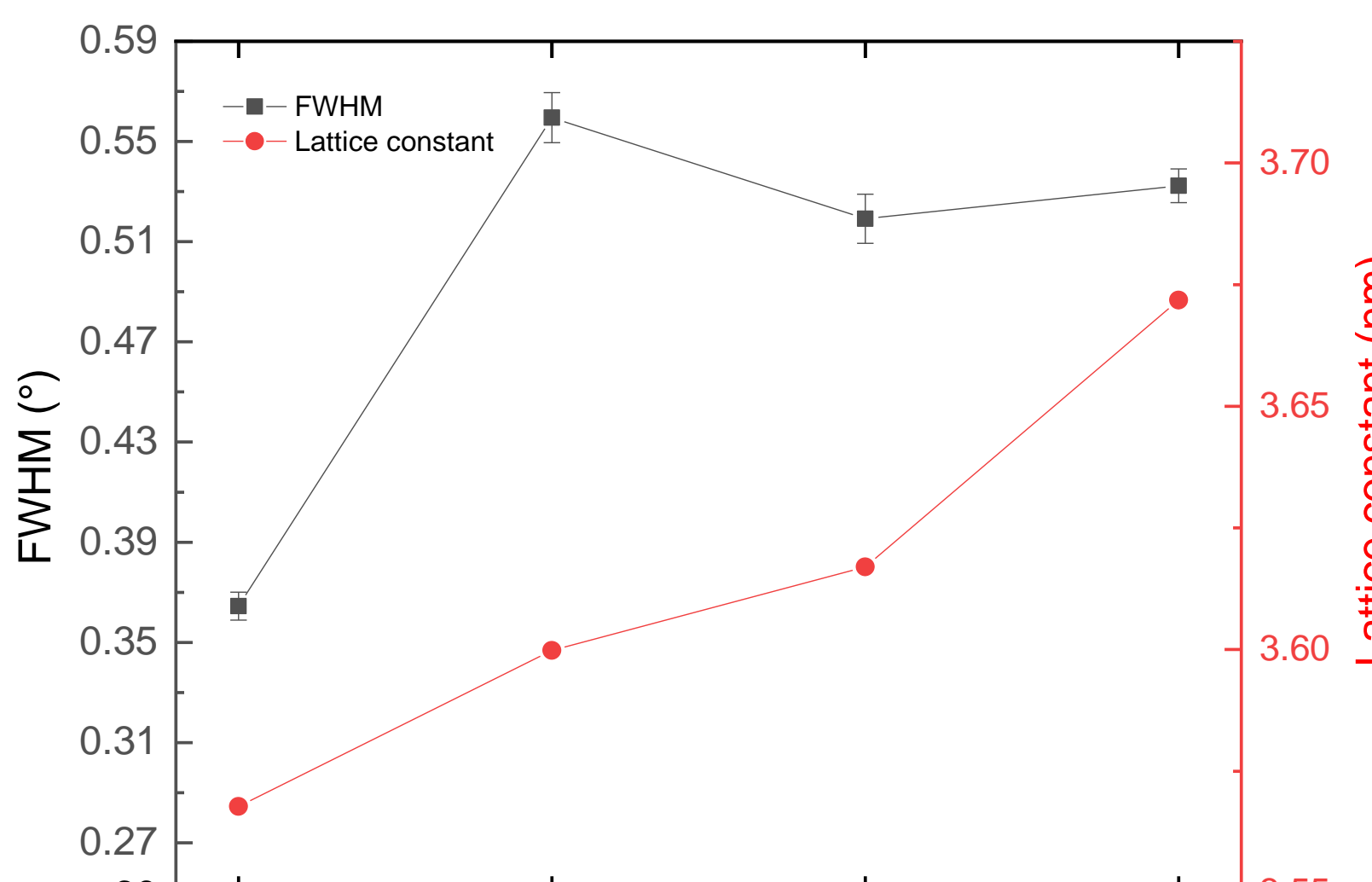
### Transmission Electron Microscopy (TEM)



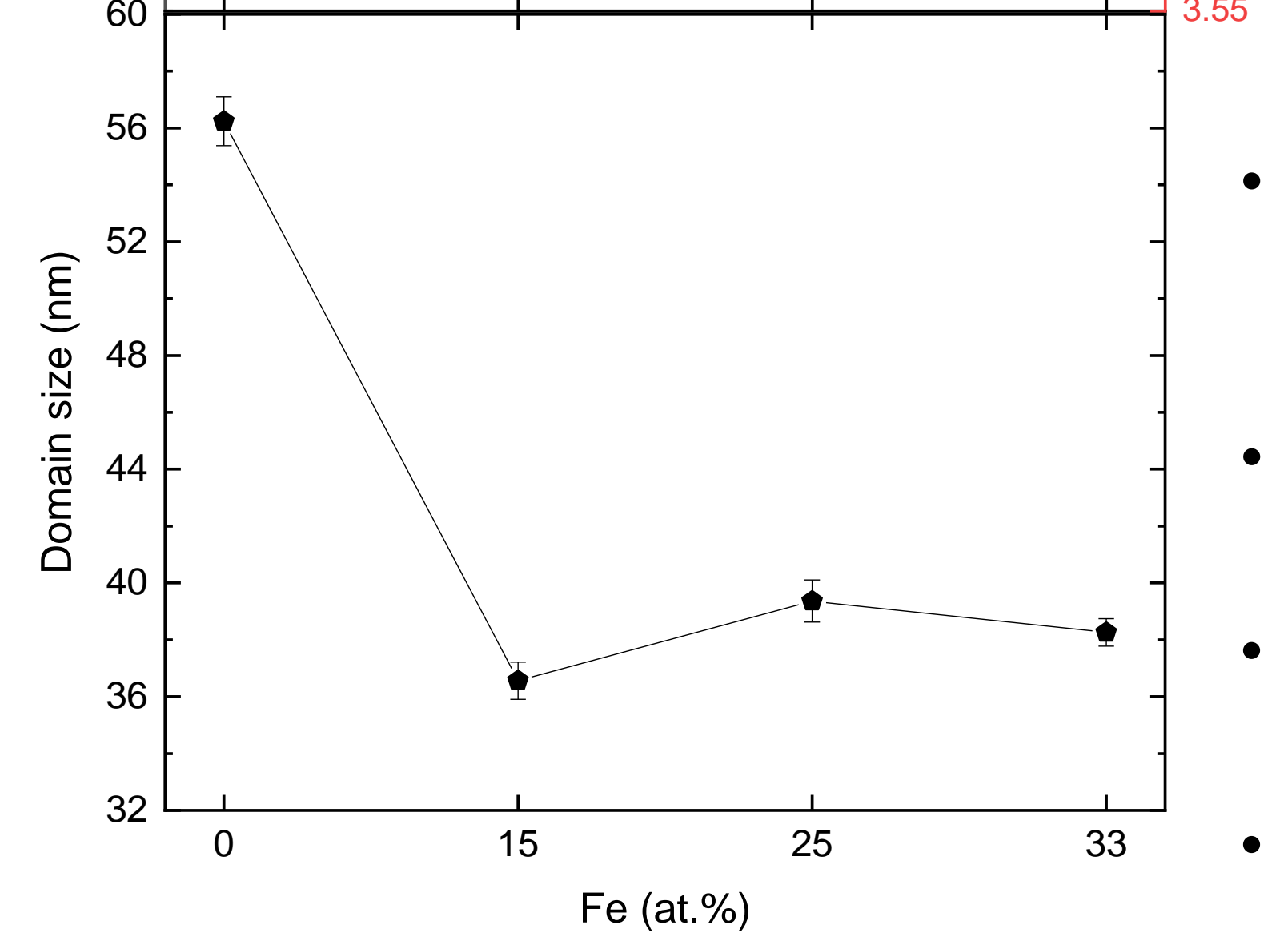
CoCrNi (15 nm)



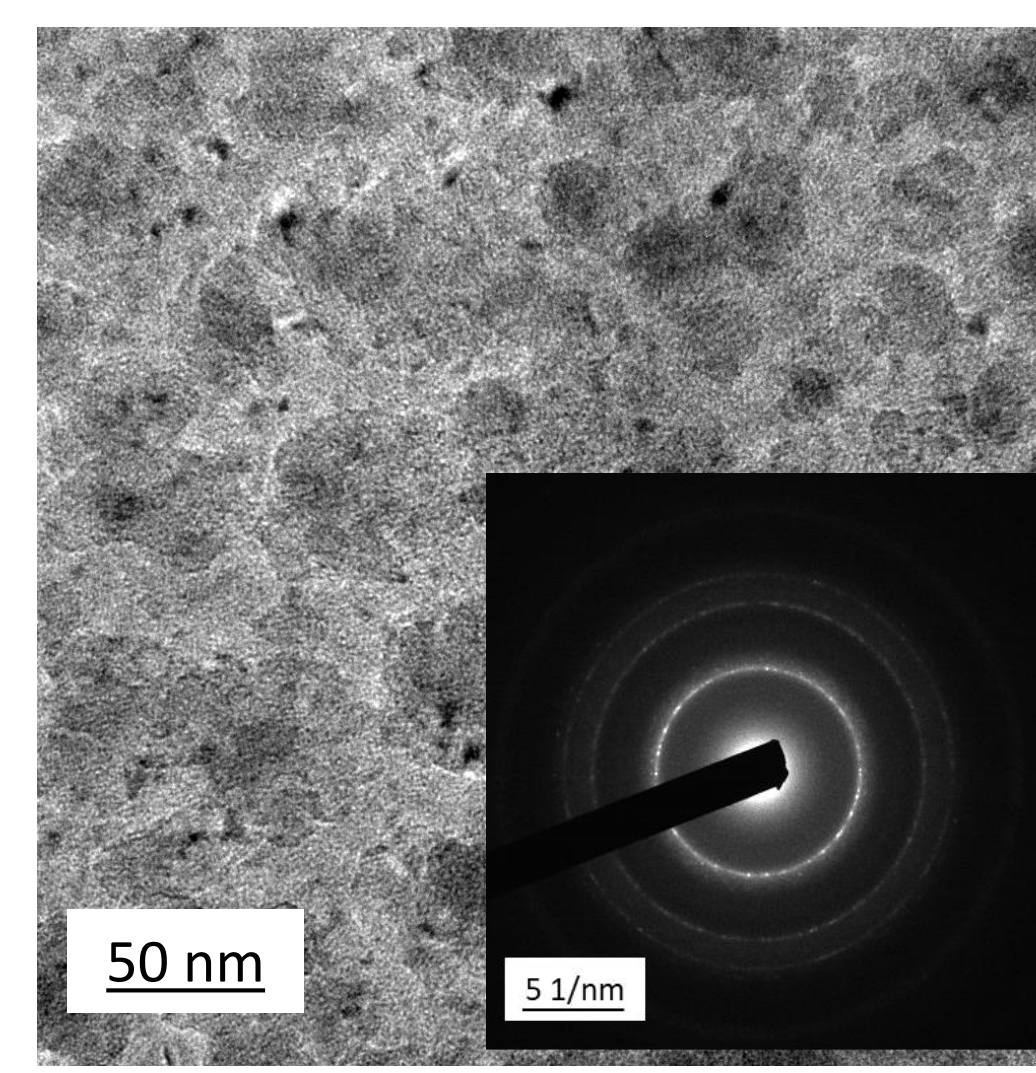
CoCrNi (40 nm)



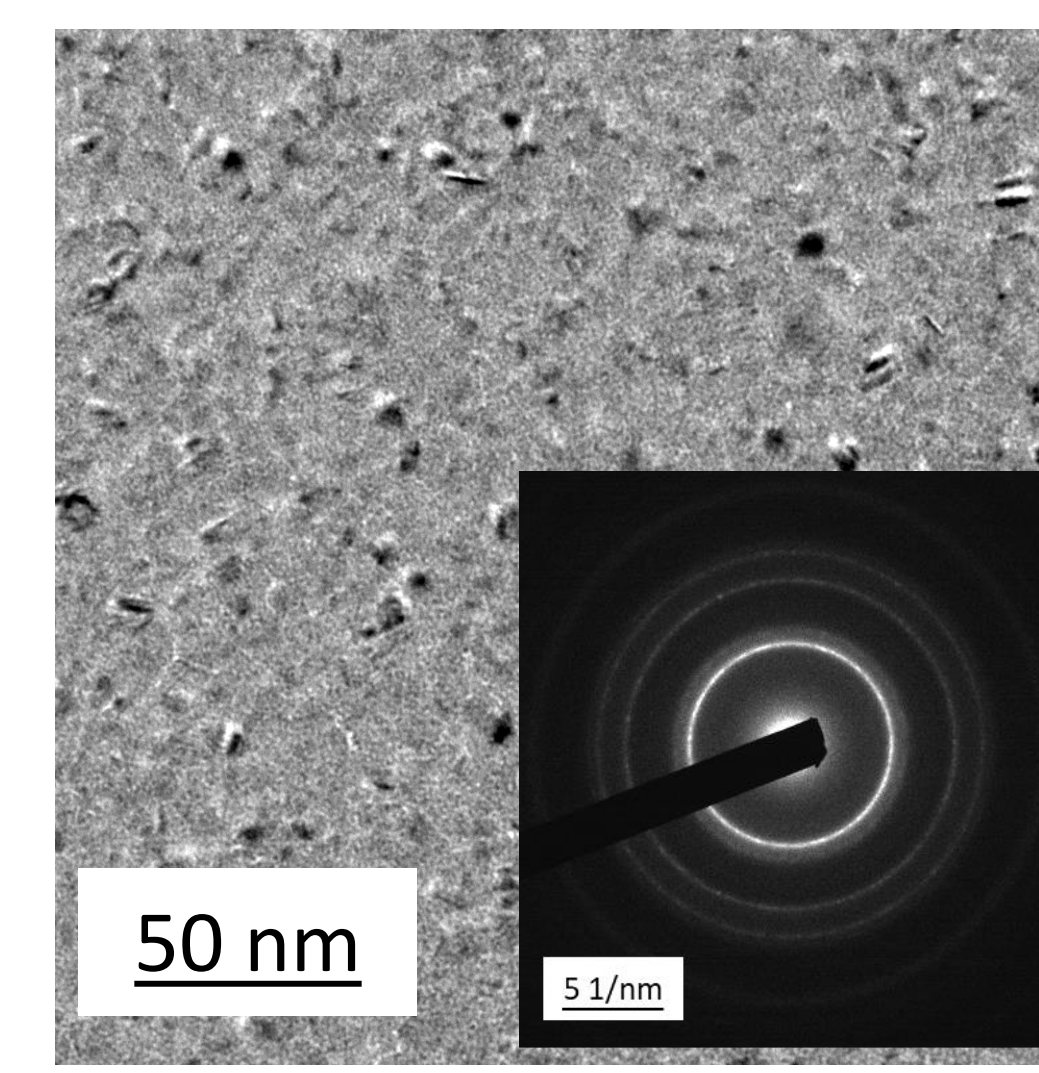
- CoCrNi  $\rightarrow$  Sharp FCC (111) peak
- Increase in Fe content  $\rightarrow$  FCC (111) peak shift to smaller angles, lattice constant increases
- Fe being the 2<sup>nd</sup> largest of these elements (atomic radius 156 pm) can enhance lattice distortion



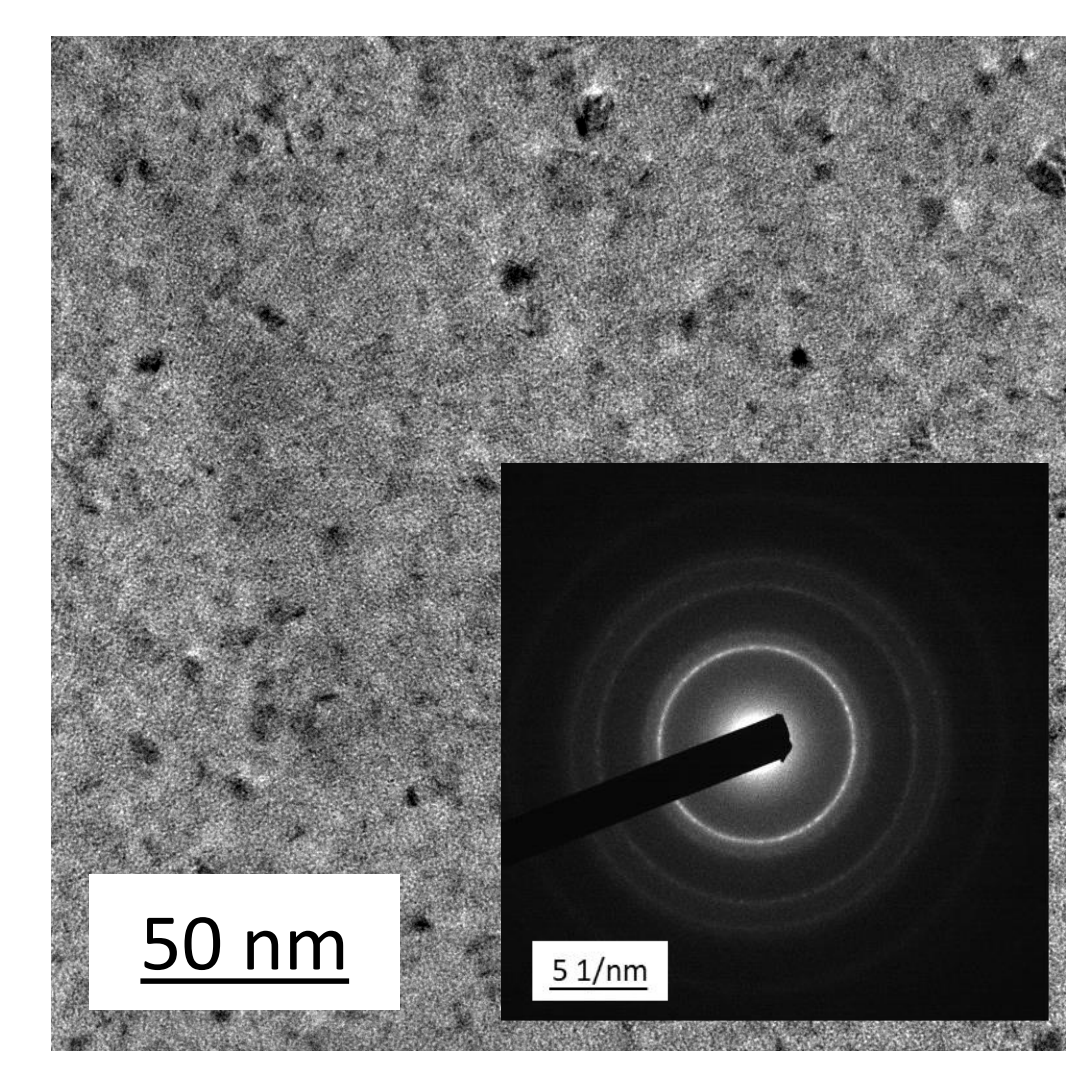
- HCP CoCrNi (15 nm)  $\rightarrow$  FCC/amorphous CoCrNi (40 nm)
- Possible appearance of stacking faults
- Nanocrystalline  $\text{Fe}_x(\text{CoCrNi})_{1-x}$  preferred FCC (111) orientation
- Addition of Fe results in smaller crystallite sizes



$\text{Fe}_{0.15}(\text{CoCrNi})_{0.85}$



$\text{Fe}_{0.25}(\text{CoCrNi})_{0.75}$



$\text{Fe}_{0.33}(\text{CoCrNi})_{0.67}$

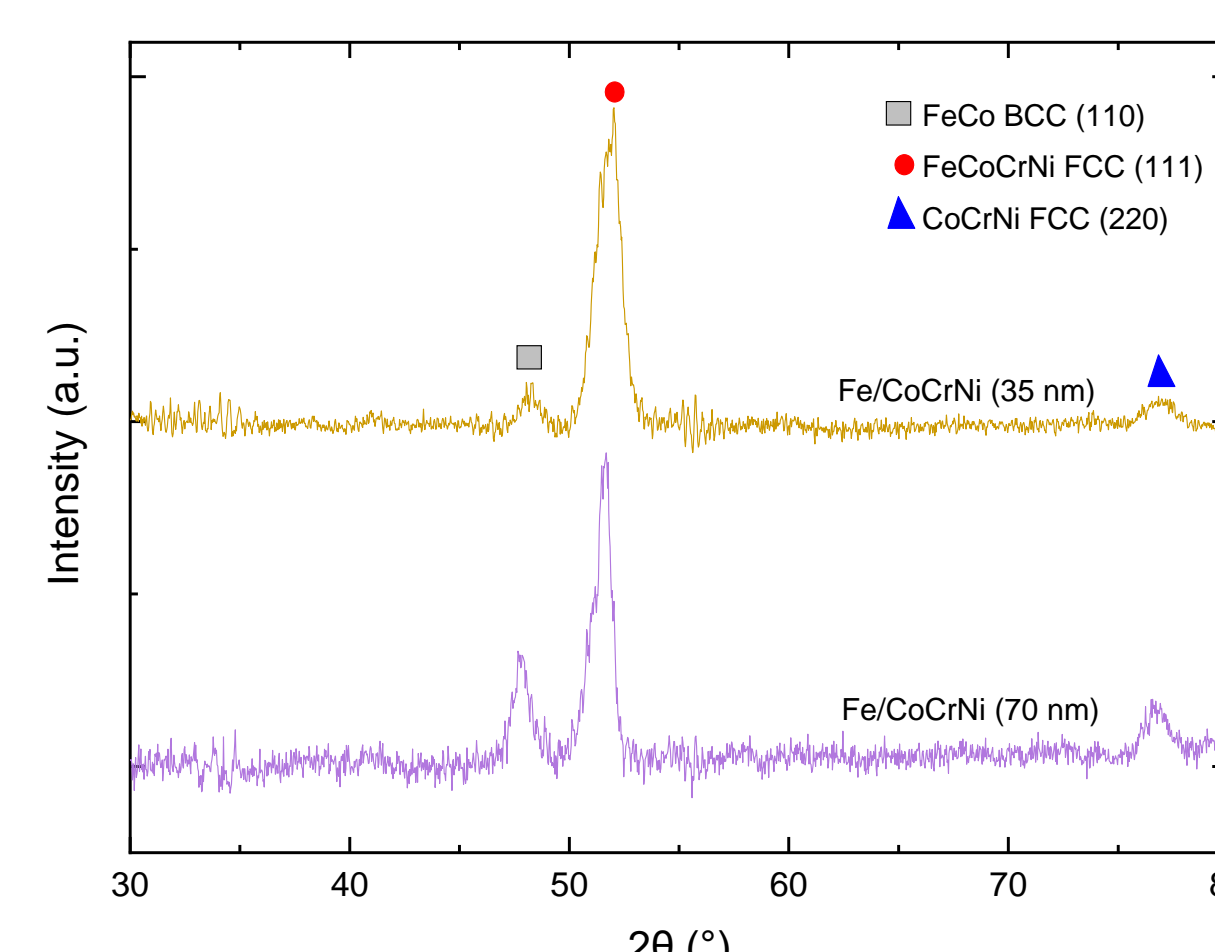
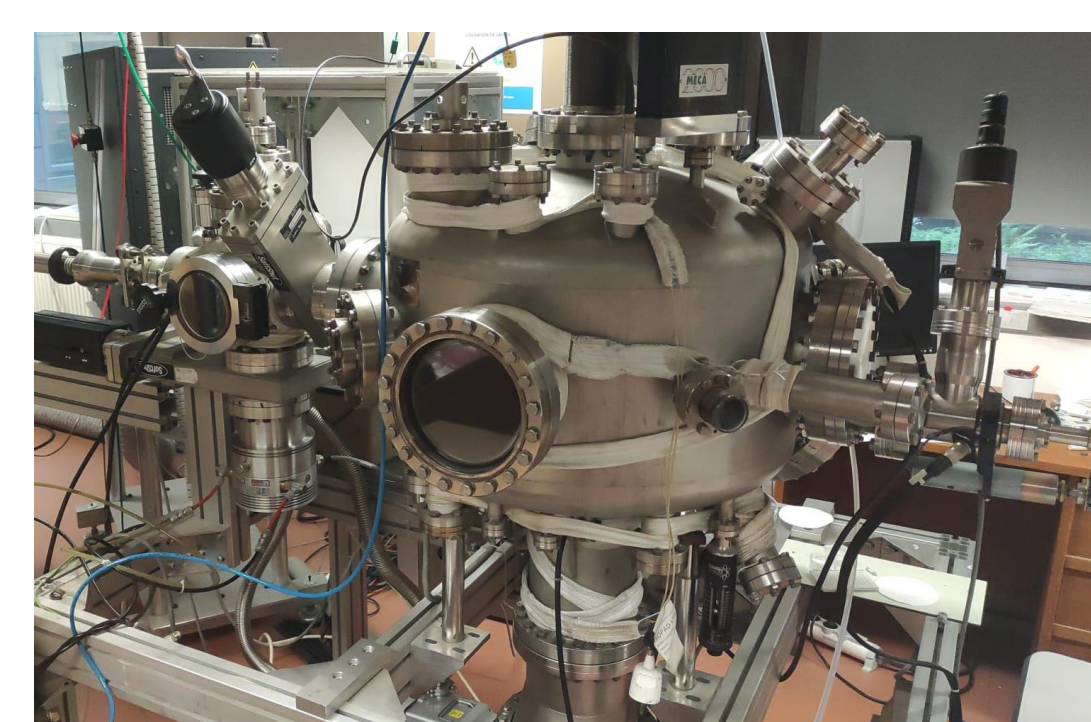
## Conclusion

- FCC (111) phase was confirmed with Fe addition up to 33 at.%
- The increase in E and H can be attributed to the small domain size (<20 nm) and the sharp FCC (111) texture
- Planar defects like Stacking Faults (SFs) and nanotwins may also be responsible for enhancing mechanical properties
- Ductile behaviour of CoCrNi on Kapton<sup>®</sup> polymer can be enhanced with Fe

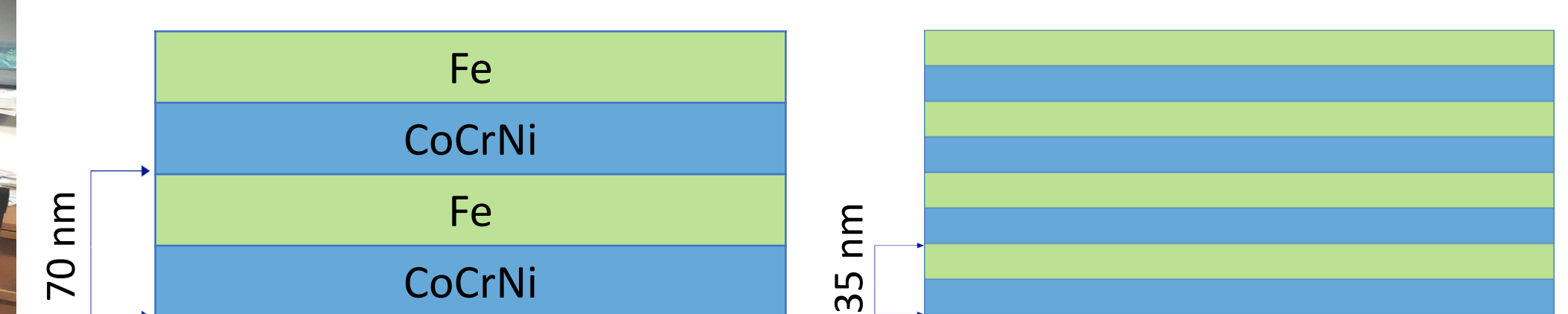
## Prospectives

- Deeper exploration of structural and mechanical properties
- Investigating microscale mechanical properties with in-situ SEM techniques

## Pulsed Laser Deposition



## Multilayers of Fe/CoCrNi



Total thickness: 700 nm

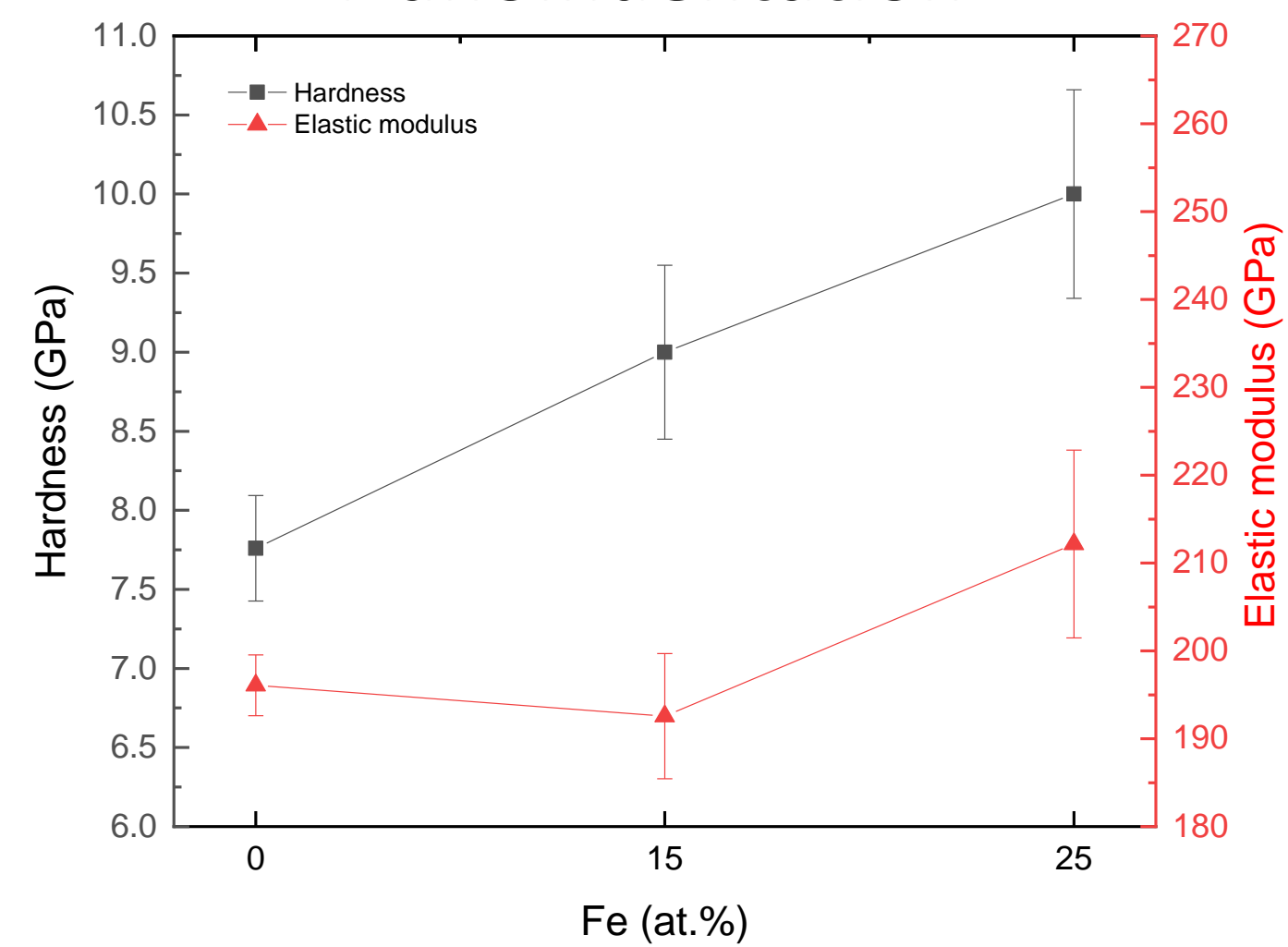
## Characterization of Fe/CoCrNi multilayers

- Observation of FeCo BCC (110) and CoCrNi FCC (220) peaks
- Effects of reducing bi-layer period (FWHM increases, Domain size decreases down to 8 nm, H enhanced up to 10 GPa)

- Pulsed laser deposition (PLD)  $\rightarrow$  synthesis of multicomponent nanoparticles and investigation of film growth regime.
- $\text{Pd}_x(\text{CoCrNi})_{1-x}$  can be studied and compared to  $\text{Fe}_x(\text{CoCrNi})_{1-x}$  thin films

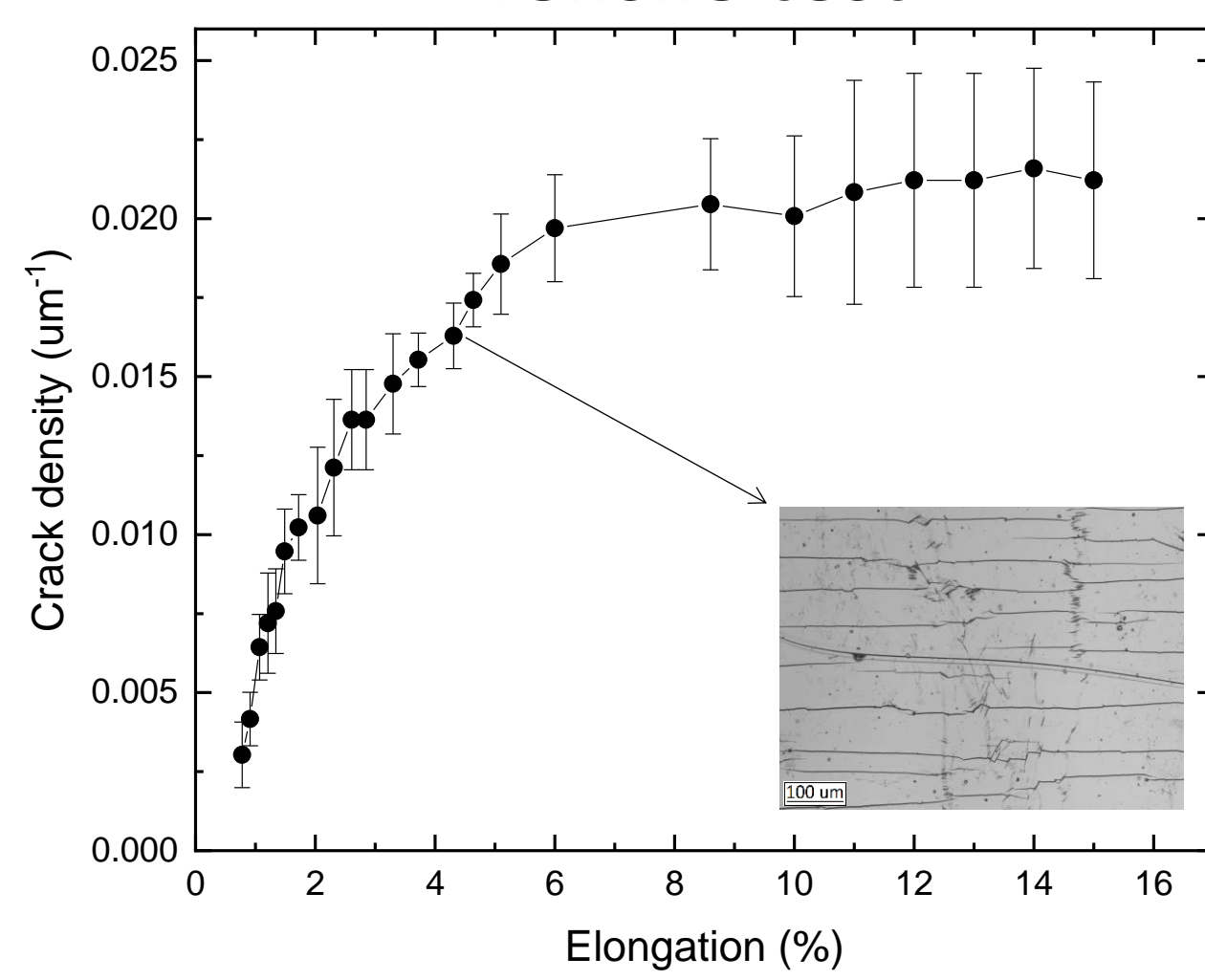
## Mechanical characterization

### Nanoindentation



Fe (at.%) 0  $\rightarrow$  25

### Tensile test



CoCrNi

- E, H increase up to 210 GPa, 10 GPa
- Tested on Kapton<sup>®</sup> polymer
- Presence of Stacking Faults, nanotwins
- Cracks initiate at 0.78%, buckling at 4.31%

## References

- [1] F. Cao, *et al.*, Surface and Coatings Technology, Volume **335**, 2018
- [2] M.K. Kini *et al.*, Surface & Coatings Technology **410** (2021)
- [3] P. Nagy, *et al.*, Materials **2022**, 15, 2319

## Acknowledgements

Dr. M. Ghidelli and Prof. C. Ricolleau acknowledge co-funding of A. Curam's PhD scholarship from École Doctorale Galilée (Université Sorbonne Paris Nord) and LABEX SEAM within the framework of the "NANO-HEAs" project, Grant # ANR-10-LABX-0096 and ANR-18-IDEX-0001. A. Curam thanks NAP MOSAIC (Université Sorbonne Paris Nord) for funding of the travel expenses.