



HAL
open science

Reviews and syntheses: A framework to observe, understand and project ecosystem response to environmental change in the East Antarctic Southern Ocean

Julian Gutt, Stefanie Arndt, David Keith Alan Barnes, Horst Bornemann,
Thomas Brey, Olaf Eisen, Hauke Flores, Huw Griffiths, Christian Haas, Stefan
Hain, et al.

► **To cite this version:**

Julian Gutt, Stefanie Arndt, David Keith Alan Barnes, Horst Bornemann, Thomas Brey, et al..
Reviews and syntheses: A framework to observe, understand and project ecosystem response to envi-
ronmental change in the East Antarctic Southern Ocean. *Biogeosciences*, 2022, 19 (22), pp.5313-5342.
10.5194/bg-19-5313-2022 . hal-04307135

HAL Id: hal-04307135

<https://hal.science/hal-04307135>

Submitted on 27 Nov 2023

HAL is a multi-disciplinary open access archive for the deposit and dissemination of scientific research documents, whether they are published or not. The documents may come from teaching and research institutions in France or abroad, or from public or private research centers.

L'archive ouverte pluridisciplinaire **HAL**, est destinée au dépôt et à la diffusion de documents scientifiques de niveau recherche, publiés ou non, émanant des établissements d'enseignement et de recherche français ou étrangers, des laboratoires publics ou privés.

See discussions, stats, and author profiles for this publication at: <https://www.researchgate.net/publication/365670843>

Reviews and syntheses Reviews and syntheses: A framework to observe, understand and project ecosystem response to environmental change in the East Antarctic Southern Ocean

Article in *Biogeosciences* · November 2022

DOI: 10.5194/bg-19-5313-2022

CITATIONS

0

READS

232

30 authors, including:



Stefanie Arndt

Alfred Wegener Institute Helmholtz Centre for Polar and Marine Research

40 PUBLICATIONS 488 CITATIONS

[SEE PROFILE](#)



Thomas Brey

Alfred Wegener Institute Helmholtz Centre for Polar and Marine Research

318 PUBLICATIONS 11,174 CITATIONS

[SEE PROFILE](#)



Olaf Eisen

Alfred Wegener Institute Helmholtz Centre for Polar and Marine Research & Unive...

194 PUBLICATIONS 3,626 CITATIONS

[SEE PROFILE](#)



Hauke Flores

Alfred Wegener Institute Helmholtz Centre for Polar and Marine Research

126 PUBLICATIONS 2,106 CITATIONS

[SEE PROFILE](#)

Some of the authors of this publication are also working on these related projects:



Antarctic sea-ice surface properties and seasonal changes [View project](#)



Contribution to BIOACID (Biological Impacts Of Ocean Acidification) [View project](#)



Reviews and syntheses: A framework to observe, understand and project ecosystem response to environmental change in the East Antarctic Southern Ocean

Julian Gutt¹, Stefanie Arndt¹, David Keith Alan Barnes², Horst Bornemann¹, Thomas Brey^{1,3}, Olaf Eisen^{1,4}, Hauke Flores¹, Huw Griffiths², Christian Haas¹, Stefan Hain¹, Tore Hattermann⁵, Christoph Held¹, Mario Hoppema¹, Enrique Isla⁶, Markus Janout¹, Céline Le Bohec^{7,8}, Heike Link⁹, Felix Christopher Mark¹, Sebastien Moreau⁵, Scarlett Trimborn¹, Ilse van Opzeeland^{1,3}, Hans-Otto Pörtner¹, Fokje Schaafsma¹⁰, Katharina Teschke^{1,3}, Sandra Tippenhauer¹, Anton Van de Putte^{11,12}, Mia Wege¹³, Daniel Zitterbart^{14,15}, and Dieter Piepenburg^{1,3,16}

¹Alfred Wegener Institute, Helmholtz Centre for Polar and Marine Research, 27570 Bremerhaven, Germany

²British Antarctic Survey, Cambridge, CB3 0ET, UK

³Helmholtz Institute for Functional Marine Biodiversity, Ammerländer Heerstraße 231, 26129 Oldenburg, Germany

⁴Geosciences, University of Bremen, 28359 Bremen, Germany

⁵Norwegian Polar Institute, Hjalmar Johansens gate 14, 9007, Tromsø, Norway

⁶Marine Geosciences Department, Institute of Marine Sciences-CSIC, Barcelona, 08003, Spain

⁷Département Ecologie, Physiologie et Ethologie, Université de Strasbourg, CNRS, IPHC UMR 7178, 67000, Strasbourg, France

⁸Département de Biologie Polaire, Centre Scientifique de Monaco, MC 98000, Monaco City, Monaco

⁹Department Maritime Systems, University of Rostock, 18059 Kiel, Germany

¹⁰Wageningen Marine Research, Ankerpark 27, 17871 AG Den Helder, the Netherlands

¹¹Royal Belgian Institute of Natural Sciences, Brussels, Belgium

¹²Marine Biology Lab, Université Libre de Bruxelles, Brussels, Belgium

¹³Mammal Research Institute, Department of Zoology and Entomology, University of Pretoria, Hatfield, Pretoria, 0002, South Africa

¹⁴Applied Ocean Physics and Engineering Department, Woods Hole Oceanographic Institution, Woods Hole, MA, 02543, USA

¹⁵Department of Physics, Friedrich-Alexander-Universität Erlangen-Nürnberg, 91054, Erlangen, Germany

¹⁶Institute for Ecosystem Research, University of Kiel, 24118 Kiel, Germany

Correspondence: Julian Gutt (julian.gutt@awi.de)

Received: 2 May 2022 – Discussion started: 18 May 2022

Revised: 12 September 2022 – Accepted: 22 October 2022 – Published: 23 November 2022

Abstract. Systematic long-term studies on ecosystem dynamics are largely lacking from the East Antarctic Southern Ocean, although it is well recognized that they are indispensable to identify the ecological impacts and risks of environmental change. Here, we present a framework for establishing a long-term cross-disciplinary study on decadal timescales. We argue that the eastern Weddell Sea and the adjacent sea to the east, off Dronning Maud Land, is a particularly well suited area for such a study, since it is based on

findings from previous expeditions to this region. Moreover, since climate and environmental change have so far been comparatively muted in this area, as in the eastern Antarctic in general, a systematic long-term study of its environmental and ecological state can provide a baseline of the current situation, which will be important for an assessment of future changes from their very onset, with consistent and comparable time series data underpinning and testing models and their projections. By establishing an Integrated East

Antarctic Marine Research (IEAMaR) observatory, long-term changes in ocean dynamics, geochemistry, biodiversity, and ecosystem functions and services will be systematically explored and mapped through regular autonomous and ship-based synoptic surveys. An associated long-term ecological research (LTER) programme, including experimental and modelling work, will allow for studying climate-driven ecosystem changes and interactions with impacts arising from other anthropogenic activities. This integrative approach will provide a level of long-term data availability and ecosystem understanding that are imperative to determine, understand, and project the consequences of climate change and support a sound science-informed management of future conservation efforts in the Southern Ocean.

1 Introduction

1.1 Background

Life in the Southern Ocean (SO) significantly contributes to global marine biodiversity and ecosystem services (Kennicutt et al., 2019; Steiner et al., 2021) and is, thus, of substantial importance for the global climate, biosphere and human well-being (Grant et al., 2013; Cavanagh et al., 2021). However, there is growing evidence that the Southern Ocean, like polar regions in general, is particularly sensitive to the impacts and risks of environmental change, as highlighted, e.g. in the *Sixth Assessment Report of the Intergovernmental Panel on Climate Change* (IPCC) (IPCC, 2022) and, specifically, in the *IPCC Special Report on the Ocean and Cryosphere in a Changing Climate* (Meredith et al., 2019) as well as the *Antarctic Climate Change and the Environment* (ACCE) report of the Scientific Committee on Antarctic Research (SCAR) (Turner et al., 2014). In a joint report the IPCC and the Intergovernmental Science-Policy Platform on Biodiversity and Ecosystem Services (IPBES) assessed the impact of climate change on global biodiversity in relation to land and ocean use and predicted that the proportion of climate-change-related biodiversity impacts will increase in the next decades (Smith et al., 2022). Due to the vast, remote and harsh nature of the environment in the Antarctic region, any comprehensive observation system requires international collaboration to establish and provide access to infrastructure and data.

Despite increased scientific interest and efforts, the scientific community has recognized major knowledge gaps regarding the vulnerability of SO biotas to anthropogenic impacts and risks, especially those driven by climate change (Flores et al., 2012; Vernet et al., 2019; Gutt et al., 2021). Such information is urgently needed to develop high-confidence projections of future ecosystem changes (Kennicutt et al., 2014; Pörtner et al., 2021) and to be able to support targeted action to mitigate or adapt to such changes, as also recently requested in the *Southern Ocean Action Plan*

in support of the *UN Decade of Ocean Science for Sustainable Development* (Janssen et al., 2022). SCAR also supports the Southern Ocean Observing System (SOOS) initiative, the SCAR Antarctic Biodiversity Portal (<https://www.biodiversity.aq>, last access: 23 August 2022), and has recently launched the scientific research programme Integrated Science to Inform Antarctic and Southern Ocean Conservation (Ant-ICON). Together, these actual and previous research efforts provide the best possible international scientific basis for climate-change detection and attribution, as well as for decision-making with respect to nature conservation in the Antarctic by the Commission for the Conservation of Antarctic Marine Living Resources (CCAMLR).

Long-term observatories have already been established in the Arctic and Antarctic, providing valuable information on mainly climate driven shifts in and drivers of biodiversity and biological processes. However, only a small number of them are located in the East Antarctic, the larger area of interest of the concept presented here. Moreover, they are all thematically rather narrow and mono-disciplinary in scope, and they were carried out independently from each other (see Sect. 4.1).

1.2 Knowledge gaps

For a comprehensive assessment of climate-change impacts and evidence-based action recommendations as well as the current scientific knowledge in terms of a quantification of physical–chemical ecosystem drivers, an understanding of ecosystem processes and of temporal shifts as well as the spatial heterogeneity of biodiversity is insufficient for a number of reasons. Firstly, the impacts of climate change and other anthropogenic activities are not uniform in space, time and across organisms (Rogers et al., 2020). Secondly, a whole-ecosystem response to external forcing and disturbances is generally difficult to assess in end-to-end observations and simulations (i.e. from primary production and its drivers to apex predators) (Walther et al., 2002) given that environmental stress cascading through the ecosystem is non-linear. Thirdly, advanced tools were not available, and important background information did not exist in the past. Fourthly, some modern research strategies and their implementation that address the following gaps of knowledge and knowledge transfer have not yet gained sufficient acceptance.

1. Synoptic surveys generating long-term and year-round data series and allowing an assessment of complex climate-induced changes (vs. natural variability) are lacking (IPCC, 2022).
2. Although concepts for standardized protocols, operating procedures and data integration do exist (see e.g. Miller et al., 2015; Piazza et al., 2019; Van de Putte et al., 2021), they have not been frequently and consequently implemented. They have to be urgently ap-

plied to acquire large-scale and long-term comparable biogeographic data.

- An integration of multi-disciplinary data derived from experiments as well as digital and genomic analyses in coupled atmosphere–ocean–cryosphere–biosphere models is still in its infancy. Such models, however, can provide deeper insights in ecosystem functioning and carbon sequestration under specific climate-change and protection scenarios (Gutt et al., 2018).
- The impacts of multiple and cascading stressors, e.g. how climate change amplifies fishing impacts or combined effects of sea-ice shrinking, ocean warming and ocean acidification, have so far only been poorly studied (Kennicutt et al., 2014; Gutt et al., 2015). Such knowledge is needed, however, for a sound understanding of whole-ecosystem functioning and to recognize synergistic effects.
- The awareness of the contributions of SO biotas to global ecosystem services is still insufficient among stakeholders and decision makers to assess their value in a global context.

1.3 Objectives

To address these knowledge gaps, we

- emphasize the urgent need of cross-disciplinary research and synoptic surveys related to environmental changes in sea ice and the water column, at the sea floor and the underside of floating ice shelves, developing the framework for a long-term research observatory in the eastern SO;
- lay out a conceptual framework for upcoming work, time and cost plans, hereafter called Integrated East Antarctic Marine Research (IEAMaR) observatory;
- justify its placement in the eastern Weddell Sea and western part of the sea off Dronning Maud Land (Fig. 1); and
- describe three scientific themes addressed by the long-term observations and complementary scientific studies to be performed at the observatory.

These objectives can be best addressed by establishing a collaborative IEAMaR long-term observatory in the eastern Weddell Sea and adjacent western part of the sea off Dronning Maud Land (DML), approx. south of 69° S between 16° W and 6° E (Figs. 1 and 2). Regular observational work should be conducted over a period of decades, and the observatory should provide a platform for an integrated cross-disciplinary Long-Term Ecological Research (LTER) programme to generate reliable fact-based evidence

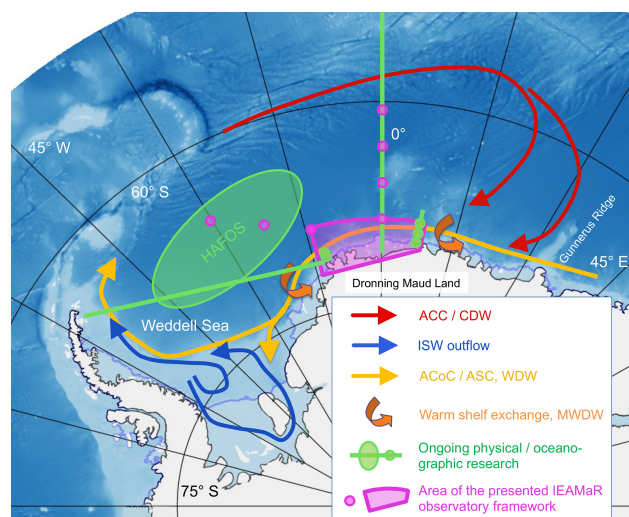


Figure 1. Possible location of the concept for an Integrated East Antarctic Marine Research (IEAMaR) observatory within the East Antarctic Southern Ocean. Arrows indicate large-scale advective water mass pathways. Deep water entering the Weddell Gyre from the ACC joins the southern limb of the gyre, of which the ACoC is also a part. After leaving the IEAMaR region, the water flow continues along the slope and shelves. Interaction with the broad shelves in the south leads to ISW, a predecessor of Antarctic Bottom Water. Small green circles indicate sites of ongoing mooring programmes. ACC/CDW: Antarctic Circumpolar Current/Circumpolar Deep Water; ISW: Ice Shelf Water; ACoC/ASC: Antarctic Coastal Current/Antarctic Slope Current; MWDW: Modified Warm Deep Water. Only the approximate location for the HAFOS (Hybrid Antarctic Float Observing System) area is indicated. Design: Tore Hattermann. Bathymetry: Dorschel et al. (2022).

for changes in SO ecosystems, as well as the role of anthropogenic causes, especially climate change driving these changes. The long-term observatory represents the location and logistic infrastructure of the intended observational work, while LTER refers to the scientific studies to be carried out there. Such a rigorous cross-disciplinary biodiversity exploratory approach (combination of observations and first-principle process studies) has been shown to be particularly suited to identify, describe, gauge, understand and project the processes driving temporal ecological changes and spatial habitat turnover in representative regions and habitats (Fischer et al., 2010). In addition, a separation of intrinsic oscillations in physical, geochemical and biological processes from extrinsic trends is necessary to attribute observed variability to climate change, inform stakeholders and educate future generations of polar researchers (Fig. 3). A detailed system understanding is to be enhanced through downscaling approaches, studying detailed key ecosystem functions (production, export and biogeochemical cycles) and species-specific processes, interactions and adaptations (species distribution and range shifts, behavioural and phenological adaptations, physiological acclimation, and genetic

mutations). Upscaling results from specific sites will improve our knowledge on regional biodiversity, including temporal shifts, and allow us to model coupled physical–biological projections, which is important for the large-scale assessments of the IPCC, IPBES and the *World Ocean Assessment* of the UN, as well as scientific advisory bodies, such as SCAR, CCAMLR and the Committee for Environmental Protection (CEP), with the latter two being part of the Antarctic Treaty System. Fishing in the wider Weddell Sea region is currently limited to exploratory fishing of Antarctic toothfish (*Dissostichus mawsoni*) off Dronning Maud Land. Although the intention was expressed some years ago to also conduct exploratory fisheries for Antarctic krill in this region, no krill is currently fished there. The IEAMaR area would overlap considerably with the proposed Weddell Sea marine protected area (WSMPA) and provide an important key hub for the required research and monitoring to be carried out according to a WSMPA management plan.

We argue that the IEAMaR observatory is urgently needed because the recent relative environmental stability of East Antarctica provides a reliable baseline for climate-related ecosystem parameters that can be used to underpin and calibrate projected biological changes caused by climatic and non-climatic drivers.

2 Overarching concept

2.1 Geographical and environmental justification

For the following reasons, the IEAMaR region is particularly suited for performing LTER to detect and understand ecological changes and predict the future developments of the coupled atmosphere–cryosphere–ocean–biosphere system in the East Antarctic SO on a decadal timescale (see also Lowther et al., 2022).

1. The region is characterized by high-latitude conditions, most of which are typical for the East Antarctic, including a coast shaped by a glaciated land mass and ice shelves, bounded by ice rises, rumples and small islands stabilizing the ice shelves (Matsuoka et al., 2015) but also leading to more complex circulation underneath them (e.g. Smith et al., 2020), frequent calving, transiting and grounding of icebergs, specific water masses and high inter-annual and intra-annual variation in the seasonal sea-ice cover and primary production. For examples of some most important environmental drivers of the marine ecosystem in the area under consideration, see Fig. 1 (currents), Fig. 2 (bathymetry) and Fig. 4 (sea ice, sea-surface temperature and chlorophyll *a*).
2. Large-scale oceanographic features potentially exposed to climate change impact this region (Fig. 1): the Weddell Gyre branches off the eastward-flowing Antarctic Circumpolar Current (ACC; van Heuven et al., 2011) and converges between Gunnerus Ridge (30° E) and the Ekström Ice Shelf (8° W), with the westward-flowing Antarctic Coastal Current (ACoC) near the coast and ice-shelf fronts and the Antarctic Slope Current (ASC) along the continental slope facilitating zonal connectivity and shaping the coastal environment. An overturning circulation (Jullion et al., 2014) with strong links to the carbon cycle (MacGilchrist et al., 2019) is associated with this circulation that is driven by winds and modulated buoyancy fluxes due to sea-ice melting, freezing and ice-shelf–ocean interactions.
3. Similar to most regions in the East Antarctic SO (east of 20° W), climate-driven changes in the wider IEAMaR region are currently insignificant or less pronounced than further north and along the Antarctic Peninsula (Turner and Comiso, 2017). However, there is evidence for some initial changes in the East Antarctic SO (Eayrs et al., 2021). Profound and widespread climate change (IPCC, 2021), with severe ecological impacts (IPCC, 2022), is projected under all climate scenarios. Both warming (Kusahara and Hasumi, 2013) and freshening (de Lavergne et al., 2014) of coastal waters are projected in the IEAMaR region, with interactions and feedbacks that may further enhance access of Warm Deep Water into the eastern (Hattermann, 2018) and southern Weddell Sea (WS; Hellmer et al., 2012; Daae et al., 2020) and melting of the Filchner–Ronne Ice Shelf (Timmermann et al., 2017) with unpredictable consequences for the marine ecosystem. Expected and already observed changes in the central and western Weddell Gyre include ocean acidification and a freshening of surface and deep waters (Jullion et al., 2013).
4. Sea ice, which shapes the entire marine ecosystem, has slightly increased in extent in the East Antarctic SO over the past decades, albeit with strong interannual variations. The unprecedented springtime retreats in 2016 and 2021/22 (Turner et al., 2017, 2022) and generally lower summer extent since 2016 and 2021/2022 (compared to the 1981/2010 long-term mean) may indicate the onset of a circum-Antarctic decline of sea-ice extent (Rackow et al., 2022). Increased upwelling, probably associated with the Southern Annular Mode, is the most reasonable explanation for changes in nutrient concentrations in the upper water column in the Weddell Gyre since the 1990s (Hoppema et al., 2015). This may explain an increase in sea-surface phytoplankton biomass between 1997 and 2020 (Pinkerton et al., 2021).
5. Previous studies have shown that the IEAMaR region houses a variety of habitats, which are representative of East Antarctic seas: neritic and oceanic pelagic, benthic, and sympagic communities, overdeepened basins (inner shelf depressions), flat shelf areas, a glaciated coast, a coastline formed by floating ice shelves with an almost

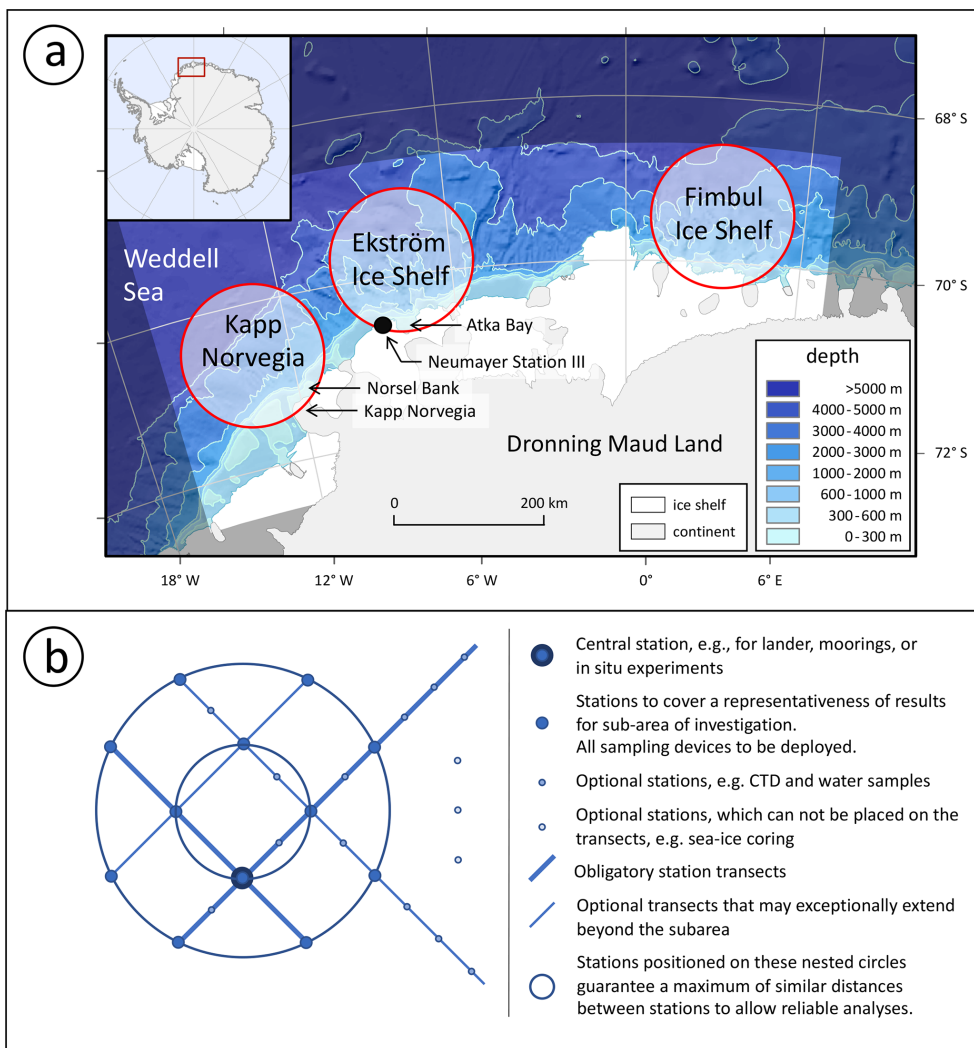


Figure 2. Spatial layout of a possible long-term Integrated East Antarctic Marine Research (IEAMaR) observatory. **(a)** Geographic position of the different components. The three circles represent three possible sub-areas, off the Fimbul and Ekström ice shelves as well as off Kapp Norvegia. The highlighted area shows the wider IEAMaR region, where large-scale data from methods like remote sensing and bathymetry are important for most other specific measurements. Bathymetric colour codes refer to the highlighted cutout; bathymetry: Arndt et al. (2013); continent and ice shelf: <https://www.npolar.no/quantarctica/> (last access: 23 August 2022). Design: Rebecca Konijnenberg, Hendrik Pehlke and Julian Gutt. **(b)** Schematic design of the positioning of stations/transects within each of the three IEAMaR sub-areas to be sampled.

unstudied underside and marine seabed and ice rises underneath, inlets in the ice shelves, iceberg grounding zones, fast ice, pack ice, and unusually shallow banks.

- For an East Antarctic region, the suggested area is comparatively well explored, as it has been subject to regular marine research expeditions for over 40 years, such as the European Polarstern Study initiative (EPOS; Hempel, 1993), the SCAR programme Ecology of the Antarctic Sea Ice Zone (EASIZ; Arntz and Clarke, 2002; Clarke et al., 2006), and German-led national programmes and expeditions such as the Hybrid Antarctic Float Observing System (HAFOS) and Continental Shelf Multidisciplinary Flux Study (COSMUS) as

well as the Norwegian expedition “Mind the gap: Bridging knowledge and decision-making across sectoral silos and levels of governance in ecosystem based management” (ECOGaps). Some of the ongoing studies are summarized by de Steur et al. (2019). The data gained during these investigations will provide a valuable knowledge base, which the long-term IEAMaR programme can build on. These studies have mostly been conducted during the austral summer, while only a few targeted multi-year dynamics, such as surveys in the Larsen A/B ice-shelf areas between 2007 and 2011, the Benthic Disturbance Experiment (BENDEX) starting in 2003, or the Lazarev Sea Krill Study (LAKRIS) expe-

dition (2004–2008). Data from the IEAMaR study area (Fig. 2) were compiled as a basis for the proposal for a Weddell Sea marine protected area (WSMPA; Teschke et al., 2020a, b). Basic circumpolar biogeographic and biodiversity knowledge was published in the biogeographic atlas of the Census of Antarctic Marine Life (De Broyer et al., 2014; Van de Putte et al., 2021).

7. The East Antarctic SO is relatively pristine with respect to noise, pollution, fisheries and tourism.

2.2 Methodological approach: observations, experiments and models

To address the presented objectives, a combination of observational work, experimental studies, data-integration and modelling, conducted at various spatial and temporal scales, will be applied.

The IEAMaR long-term observatory shall consist of a sensitive change-detection array at a number of sites/stations distributed along ecologically important gradients (Distributed Biological Observatory approach; Moore and Grebmeier, 2018) within up to three sub-areas (Fig. 2). Standardized ecosystem essential ocean variables, eEOVs, as described by Constable et al. (2016), and essential biodiversity variables (EBVs; Pereira et al., 2013) will be observed and compared at regular time intervals, e.g. species abundance and composition, reproduction and growth, and fishery and pollution pressure.

Such surveys are the core of the long-term observatory concept, integrating data from various complementary approaches and sources (autonomous long-term in situ monitoring, regular ship-based sampling, satellite-based remote sensing). Shipboard and autonomous data collections are suggested to take place at water depths ranging from the coastal shelf, including unusually shallow sites like the Norsel Bank off Kapp Norvegia (approx. 60 m), the slope between approx. 450 and 3000 m depth, influenced by the ACoC, to the deep sea, influenced by the Weddell Gyre. The concept envisages up to three sub-areas, since these should cover the different physical–chemical prerequisites and the biological heterogeneity within the wider study area, being partly representative for the East Antarctic SO (for an overview see Sect. 2.1; for details see the information provided by the three scientific themes in Sect. 3). Their final number, actual position and size of the sub-areas (Fig. 2) need to be defined after careful revision of environmental settings, spatial ecological heterogeneity and detailed requirements of the LTER concept. Thereby, environmental (physical and chemical) and biological information can be gained at a range of spatial and temporal resolutions to assess changes at scales of years to decades through regular ship-based surveys. These combined measurements can resolve the timing of interlinked, strongly seasonal processes and episodic extreme events by comple-

menting ship-based snapshot measurements with year-round high-frequency (hourly to weekly) observations of selected variables obtained through autonomous installations such as moorings, landers and satellites (e.g. physical measurements, environmental DNA analyses and chlorophyll *a*). Moreover, historical transects, such as the prime meridian, should be extended (Fig. 1).

Along the IEAMaR transects, shipboard work should be carried out at regular, if possible, yearly, intervals, using standardized sampling protocols during cruises of ice-going research vessels, such as RV *Polarstern* or others. Focus of observational work should be on the systematic sampling of four types of essential variables (EVs) implemented by the scientific community: essential climate (ECV), ocean (EOV), biodiversity (EBV) and ecosystem (EEV) variables (Van de Putte et al., 2021). This comprehensive approach would require the utilization of a wide range of sampling methods, including casts of conductivity, temperature, and depth (CTD) probes, pelagic and benthic catches, and video observations (for more details see Sect. 3 below), at fixed stations arranged in specific predefined patterns allowing for replicated sampling at different spatial scales (Fig. 2b for a possible design of the spatial arrangement of stations and transects), which is necessary to ensure temporal and spatial comparability as well as representativeness for a larger area. The shipboard work would complement the higher-resolution observations performed by autonomous platforms at selected core stations, to be placed at the centres of the long-term observation transects or at existing long-term observation transects (Weddell Sea/Kapp Norvegia, prime meridian), to allow for the technical maintenance of the autonomous platforms and contribute to the ground-truthing of remote-sensing and modelling studies. The platforms can include various systems, such as moorings, profilers, saildrones, sea-ice buoys, gliders, benthic landers, underwater fish observatories and time-lapse cameras, with the potential to grow into a network of autonomous observation devices. In addition, experimental work on specific objectives can be performed during the cruises, and top predators (seals and penguins) can be equipped with CTD-satellite trackers and biologging devices.

A nearby land- or ice-shelf-based research station can be used for technical supply of underwater equipment used during shipboard work, deployment and retrieval of long-range autonomous underwater vehicles and maintenance of autonomous observatories as well as coastal glaciologic studies. The use of lab facilities of the research station for experiments and routine collection of local biotas has advantages over shipboard work. From the base, field work including the sampling can be conducted by means of mobile sledge-based container systems, e.g. a diving hut and an aquarium container. The ice-shelf-associated fauna can be monitored by sensors and cameras attached to moorings and frozen in ice-shelf boreholes. Acquired data can be sent by cable to a recording station on the surface of the ice shelf where the data storage and energy supply are located. Neumayer Station III

would be well suited to serve as such a base, as well as for managing the observatory in the Ekström Ice Shelf sub-area.

As a suitable prerequisite, the bathymetry in this area is very well known – from swath sonar in the open ocean and also underneath the ice shelf from active seismic surveys (Oetting et al., 2022). Remote sensing data at large spatial and small temporal scales can be easily acquired from routine satellite observations of the IEAMaR area for a number of ecologically relevant variables, such as sea-ice concentrations, ice types, drifts and deformation, sea-ice thickness, polynya activity, and primary productivity. The systematic collection of satellite imagery can also be used to monitor penguin and seal abundance to understand how environmental stochasticity influences the distributions and numerical abundance of sentinel species (e.g. LaRue et al., 2022; see also Sect. 3.2.3). The cross-disciplinary studies at the IEAMaR observatory will benefit from meteorological routine measurements and glaciological data obtained from observations and from satellite ice-shelf altimetry, including basal melt rates at Neumayer Station III.

There are challenges regarding the implementation of the LTER programme. The research equipment to be used is mostly already available, indeed, but some devices need further technical development and targeted modification, e.g. regarding autonomous long-term recording of biological data with imaging methods or the application of genomic technologies (Brandt et al., 2016). Moreover, an adequate design of the replicate sampling (Fig. 2b) is of crucial importance for providing representative data that can be used for spatial upscaling and the intended spatial and temporal comparisons (Jurasinski and Beierkuhnlein, 2006). Existing approaches must be customized for the specific conditions of the study area and the type of data acquired (e.g. seabed imaging along transects). Last but not least, the extreme high-latitude Antarctic conditions have to be taken into account, since there is quite a high likelihood of time-series data losses occurring because sampling stations may not be accessible at regular intervals due to changing sea-ice conditions, and autonomous platforms (moorings or landers) are lost due to collisions with drifting icebergs.

2.3 Data management

For the cross-disciplinary approach, with various data to be integrated into an aggregated question-driven data product, an appropriate data management system is essential. It should address the specific properties of the Southern Ocean, be compatible in a global context, and make use of existing data platforms and standards. Its data, algorithms and tools should rigorously apply the principles of FAIR (findable, accessible, interoperable, and reusable; Wilkinson et al., 2016) and TRUST (transparency, responsibility, user community, and sustainability and technology; Lin et al. 2020; Van de Putte et al., 2021). It should be centred around essential variables (EOVs, EBVs, ECVs, EEVs and eEOVs), linked to

the International Polar Year (IPY data vision), and, more recently, follow the principles put forward by the polar data policies. Biodiversity data should follow the Darwin Core standard developed by the Biodiversity Information Standards consortium, which is also used by the Ocean Biodiversity Information System and Global Biodiversity Information Facility (Beja et al., 2021). This biodiversity standard originally focused on information on preserved specimens but is now capable of providing comprehensive metadata and links to other forms of data such as image repositories and molecular data.

3 Three long-term ecological research (LTER) themes

3.1 The physical–chemical environment: ecosystem drivers

3.1.1 Background

At the narrow continental shelf along the DML coast, the quasi-circumpolar westward-flowing water masses dominated by the ACoC and the ASC converge in the IEAMaR area into a coherent boundary current system (Nunez-Riboni and Fahrbach, 2009; Le Paih et al., 2020). While the interior basin is a large contiguous region of upwelling, the wind-driven downwelling over the eastern continental shelf maintains a pronounced slope front (Heywood et al., 1998) that protects the glaciated coast from Warm Deep Water (WDW), a regional derivative of Circumpolar Deep Water (CDW) that is brought southward in the eastern branches of the Weddell Gyre. Coastal waters are part of the fresh shelf regime (Thompson et al., 2018), where interactions with the adjacent ice shelves are controlled by a seasonal interplay between wind-driven downwelling of solar-heated surface water (Zhou et al., 2014) and cross-front exchanges of modified WDW (mWDW) at depth (Nøst et al., 2011; Hattermann et al., 2014).

Direct observations and estimates of basal melt rates of the ice shelves derived from satellite remote sensing yield a spatially heterogeneous as well as temporarily variable distribution of basal melt (Sun et al., 2019). These ice shelves are directly coupled to the regional ecosystem. In particular, upwelling of sediment-laden plumes as part of the overturning inside the ice-shelf cavities may be a major supplier of nutrients, trace metals (iron and other bio-essential elements), and inorganic and organic carbon. Cold ice-shelf cavities are usually identified by outflows of ice-shelf water plumes that are colder than the freezing temperature at surface pressure, which leads to platelet and potentially marine ice formation. Due to relatively fresh and hence buoyant continental shelf water masses, formation of dense High Salinity Shelf Water is absent along the DML coast, which is the driver of a vivid ice pump and marine ice formation in other regions of the Antarctic (Nicholls et al., 2009; Herraiz-Borreguero et

al., 2016). However, refreezing under the ice shelf (Hattermann et al., 2012), outflow of potentially supercooled ice-shelf water (ISW) (Nøst et al., 2011) and accretion of significant amounts of platelet ice beneath coastal landfast ice (Arndt et al., 2020) have been observed, and these could play a major role in the productivity of the whole Weddell Gyre (Kauko et al., 2021).

Over the recent decades, a slight increase in Antarctic sea-ice extent has been observed, with considerable spatial and temporal variabilities (Parkinson, 2019), even though the summer sea-ice minimum has been below the long-term trend in the past seven years, with a record low in February 2022 (Turner et al., 2022). However, the low sea-ice extent period is not yet long enough to conclude a regime shift or a change in long-term trends. Overall, the sea ice modulates surface momentum and buoyancy fluxes (Zhou et al., 2014) and affects the cycling of nutrient and gas exchanges between ocean and atmosphere (Vancoppenolle et al., 2013).

The present-day atmospheric and oceanic CO₂ levels are projected to reach much higher values towards the end of the century (Hoegh-Guldberg and Bruno, 2010; IPCC, 2022). As iron chemical speciation strongly depends on CO₂ (Liu and Millero, 2002), iron seawater chemistry will be altered under high CO₂ concentrations (Ye et al., 2020), with unknown effects for SO phytoplankton productivity (Pausch et al., 2022). Based on field observations, the increase in atmospheric CO₂ has already turned the Weddell Sea from a CO₂ source into a CO₂ sink due to elevated storage of CO₂ in the surface layer (Hoppema, 2004). However, the CO₂ exchange with the atmosphere is not well quantified for the entire high-latitude SO due to the paucity of data, especially from the winter season (Lenton et al., 2013). Warming-induced strengthening of the subpolar westerlies (Thompson et al., 2011) has caused stronger upwelling of carbon- and nutrient-rich deep water (Hoppema et al., 2015). It is presently unknown if such vertical water transport will continue in the future. There is currently insufficient data for reliable projections of the responses of Antarctic organisms to ocean acidification, together with changes in other environmental factors, such as warming, light and nutrient availability (Seifert et al., 2020).

Primary production in the upper water column and the sea ice is regulated by an interplay of mostly climate-sensitive environmental factors, including the seasonal sea-ice growth and melt, water-column stratification and associated light regimes (Arrigo et al., 2008), and the availability of nutrients and trace elements, especially iron (see e.g. McGillicuddy et al., 2015; Morley et al., 2020). In particular, trace metal data across the Weddell Sea are still sparse, with evidence of low concentrations of both iron and manganese (Balaguer et al., 2022). Meteorological features (e.g. storms) can produce sudden and massive particle pulses that may cover hundreds of square kilometres of the continental shelf with the sinking of tons of organic carbon in a few days (Isla et al., 2009) and cause strong temporal variations in sub-ice-shelf melting, thus increasing freshwater fluxes. Although degra-

dation processes in the upper water column are particularly intense in the Weddell Gyre (Usbeck et al., 2002), the organic matter that reaches the seabed is sufficient to sustain diverse and abundant benthic communities, which contribute substantially to the remineralization of organic matter (see also Sect. 3.2 and 3.3), especially in shelf regions (Brasier et al., 2021).

3.1.2 Objectives

To fill the current lack of understanding of observed and expected changes in the physical–chemical environment and their impacts on biogeochemical fluxes in the marine ecosystem, we shall address the following objectives (for closely related ecosystem services see Sect. 3.3).

- Monitor the shelf-slope boundary current system and slope front structure to detect changes in the physical environment to (a) improve process understanding and develop links to ecosystem dynamics and (b) assess the along-flow evolution and spatial connectivity of in- and outflow gateways of the eastern Weddell Sea.
- Understand basin-wide and climate-sensitive changes in ice-shelf–ocean interactions, such as spatio-temporal variability of basal melt rates underneath the Ekström Ice Shelf and production of platelet ice.
- Understand the atmosphere–sea-ice–ice-shelf variability and interaction, in particular drivers for pack-ice and fast-ice dynamics, seasonal surface evolution as an indicator of the under-ice light availability, and orographic changes of the cryosphere (e.g. ice-shelf freeboard height), which can impact the marine ecosystems.
- Quantify key variables that structure the main ecosystem compartments including sea-ice dynamics, water mass characteristics and sea-floor processes to allow separating extrinsic (anthropogenic) from intrinsic (system-immanent) impact drivers.
- Assess carbon, nutrient, and trace-element cycling within and among these ecosystem compartments under current and future climatic conditions to contribute to a better understanding of SO ecosystem functioning and their changes over time.

To integrate the above points into a holistic understanding of the physio-biogeochemical system, co-located and coordinated observations of multidisciplinary parameters are needed at a new set of distributed sites that are able to resolve the spatial connectivity in along-flow and across-gradient dimension. Also, existing long-term hydrographic, nutrients, iron, CO₂ and oxygen (and transient tracers) records must be continued (Fahrbach et al., 2011; van Heuven et al., 2011), while parameters and methods of measurement and analysis need to be reassessed and, where appropriate, be adapted to

allow for the detection of drivers of change (e.g. the importance of buoyancy fluxes from air–sea–ice interactions and the role of ocean eddies for cross-shelf exchange). This approach will also enable the detection of abrupt and extreme events (e.g. storms) and periodic processes (e.g. tides; Isla et al., 2006) that may be essential for the overall energy and matter flow but are often overlooked.

The time-series measurements at the long-term observatory shall monitor inflow and outflow of the eastern WS boundary current to enable discrimination between meridional overturning, lateral advection processes and water-mass transformations that connect local processes with the large-scale circulation. A quantification of the Antarctic Slope Undercurrent will help to determine its role in eastward transport of nutrients, trace elements, larvae, biotas, etc. beneath the westward-flowing Slope Current. On a basin-wide scale, these data shall complement the ongoing ARGO float programme in the interior WS and serve as an upstream gauge for the recently established observatories at the southern WS continental slope/shelf, beneath the Filchner Ice Shelf and at the Antarctic Peninsula. In particular, the Kapp Norvegia sub-area is a key location for observing the evolution downstream of the open ocean (Kauko et al., 2021), fast-ice and under-ice-shelf observatories at Fimbul Ice Shelf (Hattermann et al., 2012), as well as for monitoring changes that are expected to affect much of the southern WS. The IEAMaR stations in the coastal Ekström sub-area shall complement ongoing long-term observations of the fast-ice–shelf-ice–ocean interactions (including regular measurements of fast-ice properties, the water column beneath and the basal/surface mass budget of the adjacent shelf ice) and Perennial Acoustic Observatory in the Antarctic Ocean (PALAOA) in Atka Bay close to Neumayer Station III, adding to the understanding of the impact of ice-shelf–ocean interactions along the eastern coast of the IEAMaR region. Moreover, Neumayer Station III shall provide an in-reach laboratory for process studies, in particular when combined with long-term moorings beneath the ice shelf that are currently under development.

3.1.3 Methods

The major observing systems shall combine fixed moorings, drifting sea-ice observatories (e.g. Jackson et al., 2013; Nicolaus et al., 2021), benthic observatories, autonomous underwater vehicles (including gliders), regular ship-based observation work and satellite-based remote sensing. These will be complemented by atmospheric, biological, cryospheric and oceanographic long-term observatory infrastructure at and in the vicinity of Neumayer Station III. Long-term moorings shall be equipped with sediment traps and sensors for monitoring transport, bottom-water characteristics, WDW interface depth, and the upper ocean buoyancy budget, as well as biogeochemical parameters, e.g. dissolved O₂ (e.g. Bittig et al., 2018), turbidity (e.g. Boss et al., 2015), pCO₂

(e.g. Lai et al., 2018), photosynthetically active radiation and pH (e.g. Okazaki et al., 2017), fluorescence (as a proxy for chlorophyll and phytoplankton abundance), and other in situ tracers. Optical sensors will be used to measure nitrate (e.g. Sakamoto et al., 2017) and coloured dissolved organic matter. The use of the promising recent development of lab-on-chip sensors for assessing dissolved inorganic carbon, pH, nitrate, phosphate and iron (Nightingale et al., 2015) is also envisaged. Active acoustic techniques shall be used to determine depth profiles of currents, zooplankton and fish abundance. In addition, bio-optical platforms equipped with particle cameras and gel traps shall collect sinking particles to assess the flux of organic matter from the mixed layer to the sea floor.

For sea-ice monitoring, upward-looking sonar and acoustic Doppler current profilers (thickness and ice drift velocity) at the backbone moorings shall be combined with fixed electromagnetic induction (EM) stations (Brett et al., 2020) and monitoring of optical properties and relevant biogeochemical properties through fast ice. Drifting ice-tethered autonomous observatories will provide data on biogeochemical properties of sea ice and the water column, zooplankton, and fish distribution (see also Sect. 3.2.3) during their drift through the Weddell Gyre. Repeated airborne EM and broadband radar grids (Haas et al., 2021; Jutila et al., 2022) shall provide coincident snow and ice thickness and roughness information to characterize ice regimes of first- and second-year sea ice of different origin. Ice/ocean buoys shall provide year-round time series of meteorological parameters and air–sea–ice–ocean interactions in a larger geographical context, covering an extended set of ECVs (Lavergne et al., 2022), as well as ocean-surface stress and ocean-surface heat flux to support the cross-disciplinary concept of the IEAMaR long-term observatory.

Open-ocean observations of cryospheric components will be complemented by sea-ice coring for direct physical, biological, and chemical material collection, and direct data measurements should be conducted in all three sub-areas, primarily in Atka Bay, and preferably at the same or similar locations and at the same time of year on a regular basis from the ship, with helicopter support if necessary. Sampling shall be done on different ice types, including fast ice, seasonal ice, snow cover and platelet ice, where these exist, together with sub-sea-ice ocean properties from manual CTD casts (Arndt et al., 2020). The collection of oceanographic data by a mooring below the Ekström Ice Shelf since 2005 should be continued and extended. It is well protected from the regular iceberg traffic in front of the shelf (Oetting et al., 2022) and safer than those hung from the ice-shelf edge, which is subject to regular calving events. The mooring holds a passive acoustic recorder and a CTD and was operational until February 2022 when the ice shelf broke off and the cables were torn. This long-term data series is extremely valuable for understanding physical processes at the sub-surface of the ice shelf, as well as coastal oceanographic processes, includ-

ing the dynamics of pelagic species composition on a year-round basis and in relation to the environment. The service work carried out by the overwinterers of Neumayer Station III proves the potential longevity of such set ups – compensating for the cost of installation – which could never have been achieved by moorings deployed in front of the ice shelf where there is heavy iceberg traffic.

Satellite-based remote sensing shall be used to determine sea-ice variables (extent, concentration, thickness, snow cover, drift, age, surface temperature, surface albedo), sea-surface temperatures, glaciological variables (surface elevation, ice-flow velocity, basal melting; see e.g. Berger et al., 2017; Eisen et al., 2020), surface and total mass balance (e.g. Eisen et al., 2019), calving, and the spatio-temporal distribution of the biomass of pelagic primary producers (chlorophyll), as well as for systematic monitoring of seal and penguin abundances and distributions.

Shipborne air-chemistry and autonomous remote particle concentration measurements are also desirable. They can be tied to the data from the Neumayer air-chemistry observatory (Weller et al., 2006). Shipboard measurements will also allow the ground-truthing of the automated systems, ad hoc experiments and field studies. The latter encompasses CTD transects and concurrent sampling for radiotracers, trace metals and nutrients.

At the seabed, observations and samplings shall be conducted with grabs and corers to assess benthic–pelagic coupling processes (e.g. seasonal deposition and degradation of labile organic matter), sediment redox cycling, and early diagenetic processes, using rate measurements, as well as biomarker and stable isotope analysis. Sediment traps shall enable the determination of the dynamics of sinking rates and the relative importance of different types of particles at various temporal scales. Benthic geochemical observatories shall complement the oceanographic moorings, equipped with a similar suite of sensors to monitor conservative and reactive compounds in the nepheloid layer and currents. Benthic oxygen fluxes shall be determined using eddy-covariance technology and repeated sediment O₂ profiling. For additional methods to acquire biological data in the context of the flux of energy and biomass, see Sect. 3.2.3.

3.2 Organisms and ecosystems – adaptations, biodiversity and ecosystem functioning

3.2.1 Background

The projected sea-ice decline and water-column changes (Moline et al., 2004; Trimborn et al., 2017; Eayrs et al., 2021) will profoundly affect primary production and zooplankton composition, with cascading but so far largely unknown implications for the entire SO food web, including top predators and the benthic system (Atkinson et al., 2019; Hill et al., 2019; Steiner et al., 2021). In general, all organisms from different trophic guilds respond to environmental changes by

migration or extinction unless they can acclimatize because of phenotypic plasticity and genotypic adaptation through natural selection (Somero, 2012). The underlying genetic architecture of organismic adaptation is responsible for shifts in the ecological niche width of a species under changed conditions. Comprehensive process studies, which relate transcriptomic/proteomic responses and threshold temperatures to long-term ecophysiological parameters including growth performance (Windisch et al., 2014), are lacking so far for key species in the high-latitude SO. Such studies would contribute to addressing the general long-term objective of establishing the missing link between genotype and phenotype (Oellermann et al., 2015) and of understanding the role of population structure and temporal variation for the adaptability to environmental change (Lancaster et al., 2016).

The adaptation of single species to environmental change, and, therefore, shifts in their physiological and behavioural performance, has consequences for species interactions, biodiversity and functioning of communities (Gutt et al., 2018). This includes competition, predator–prey relationships, and responses to disturbances including extreme events in sea-ice dynamics, iceberg calving and scouring, spatio-temporal shifts in water masses, or weather-driven mass occurrence of phytodetritus at the sediment surface (Sañé et al., 2012).

It is generally known that biodiversity drives ecosystem functioning, such as productivity, energy transfer, and remineralization (Naem et al., 2012), as well as ecosystem stability. So far, the biodiversity–ecosystem-functioning (BEF) relationship and its climate sensitivity are virtually unknown for high-latitude SO pelagic and benthic systems, although such knowledge is essential to understand and predict developments in ecosystem structure and function in response to climate and other environmental change. Also, our knowledge of whole-community vulnerability or robustness is still very poor, especially for the slow-growing and immobile epibenthos (Gutt et al., 2018), which cannot respond to rapid environmental changes with immediate shifts in spatial distribution (Isla and Gerdes, 2019) but provides with its three-dimensional architecture specific micro-habitats for a rich associated fauna.

The Antarctic sea ice itself provides the habitat for a variety of unique taxa that contribute significantly to carbon flux and nutrient cycling in the SO (Monti-Birkenmeier et al., 2017; Steiner et al., 2021). Ice algae are an important source of carbon for pelagic and benthic communities (Meiners et al., 2018; Säring et al., 2022). Thus, the sea-ice cover critically controls ecosystem functions and services in the Weddell Sea. In addition, ice-associated biotas play an important role for the winter survival of various zooplankton taxa (Schaafsma et al., 2017; Kohlbach et al., 2018), and the sea-ice habitat constitutes an important shelter and nursery ground for Antarctic krill (Meyer et al., 2017; David et al., 2021). At the same time, sea ice, its associated communities, related biogeochemical processes and trophic in-

teractions are highly sensitive to climate-induced changes in structure, temporal dynamics and spatial extent.

Population sizes have been estimated for emperor penguins (*Aptenodytes forsteri*) (Fretwell et al., 2012) and Weddell seals (*Leptonychotes weddellii*) (LaRue et al., 2021), based on the analysis of satellite images. However, for most Weddell Sea meso-predators and top predators, population sizes are still unknown (Gurarie et al., 2017; Richter et al., 2018), which limits our ability to assess population health and trends, as well as predator responses to climate change. Filling this knowledge gap is especially important because the wider IEAMaR area is generally known as a likely important foraging ground for several Antarctic seal and penguin species (McIntyre et al., 2012; Bester et al., 2020; Wege et al., 2021a).

3.2.2 Objectives

The time-series observations of biodiversity and ecosystem variables, to be conducted in parallel with physical–chemical parameters (see Sect. 3.1), will address the following objectives.

- Identify key species, assemblages and functional groups (covering a range of ecologically important, trophic levels, habitats and traits, such as population size, reproduction, mortality, growth rates and competition) for monitoring and preparation for targeted LTER work.
- Assess the adaptive and acclimatory scope of ice-associated, pelagic and benthic key species: genetic diversity, ecophysiological plasticity, adaptive strategies and capacities, spanning the whole life-cycle over several generations.
- Determine changes in spatial distribution of selectively neutral and adaptive alleles (e.g. stress response) in populations of vulnerable species (genomics, transcriptomics).
- Determine changes in species spatial distribution and foraging habitats compared to known distributions and calculated *areas of ecological significance* (Hindell et al., 2020).
- Evaluate taxonomic and functional biodiversity of ice-associated, pelagic and benthic biotas, encompassing a wide range of organisms from microbes to top predators, and identify areas of ecological significance based on species others than top predators.
- Identify and understand relationships between biodiversity and ecosystem functioning, including climate feedbacks, such as energy flow, production, remineralization and species interactions.
- Assess the robustness or vulnerability of ecosystems in the IEAMaR region and the impact of multiple

drivers with respect to anthropogenic changes in biodiversity (including the establishment and spread of non-indigenous species).

Comprehensive knowledge on the structure and functioning of genes is the basis to assess the role of individuals in their population, community or ecosystem. In cases where the entire species-specific ecophysiology cannot be studied (yet) by biomolecular “-omics” studies, whole-organism *in situ* or *in vitro* experiments can provide valuable insights (Strobel et al., 2012). Therefore, the long-term IEAMaR work will survey ecophysiological parameters, gene expression and life cycles of ecological key taxa, such as phytoplankton, crustaceans (e.g. copepods, amphipods, isopods, euphausiids), fishes (mostly notothenioids), echinoderms, molluscs and selected sessile suspension feeders (e.g. sponges, ascidians, cnidarians and bryozoans). All such studies aim to determine the environmental plasticity of single organisms and species with their intra- and inter-specific variability and validate the results from experiments or single-species models (Somero, 2012). The results will allow for understanding the complex environmental conditions under which organisms can persist or become locally extinct.

A reliable ice cover is crucial for the reproduction of Antarctic krill, ice-breeding pinnipeds, and emperor penguins, as well as a potential winter retreat for some species, e.g. Antarctic minke whales (Meyer et al., 2017; Filun et al., 2020). Polynyas also play a major role as foraging areas (e.g. Malpress et al., 2017; Labrousse et al., 2019). For other meso- and top-predator species, availability of ice-free surface for breeding and access to productive foraging grounds are key long-term population drivers (Younger et al., 2016). The logistical challenges of systematic long-term *in situ* data collection limit our understanding of habitat use by top predators and their prey for many parts of the SO, including the continental slope areas that are home to adult Antarctic toothfish. The cross-disciplinary character of the IEAMaR observatory allows the combination of remote-sensed population assessments and continued studies of distribution, foraging ranges, and behaviour as well as passive acoustic monitoring studies of SO top predator species related to key environmental features (e.g. Van Opzeeland et al., 2010; Thomisch et al., 2016; Hindell et al., 2020; Houstin et al., 2021; Oosthuizen et al., 2021; Schall et al., 2021; Wege et al., 2020, 2021a, b).

The BEF relationship shall be investigated in detail to assess ecosystem stability versus vulnerability for the given biodiversity. For instance, analyses shall be carried out on whether a possible decline in species richness affects primary production, energy transfer and nutrient recycling through changes in functional redundancy at a community level. An increase in ecosystem functions (e.g. primary and secondary production) with decreasing biodiversity is expected if fast-growing species (e.g. pioneers) become dominant. Regional biodiversity may also increase with a shift towards

less polar conditions, if sub-Antarctic species (e.g. Patagonian toothfish) immigrate into the WS, displacing native high-Antarctic benthic species (e.g. Antarctic toothfish or *Trematomus* spp.) (Griffiths et al., 2017). However, high-Antarctic species are often eurybathic in their depth distribution and thus may preserve their climate envelopes by migrating to deeper waters (see Barnes and Kuklinski, 2010), a process that may be facilitated by boosted pelagic primary production due to sea-ice losses (Arrigo et al., 2008). Mobile pelagic species are foraging and travelling further southward from sub-Antarctic island colonies to forage at the ice edge of Southern Ocean waters, increasing competition potential with Antarctic species (e.g. Cristofari et al., 2018; Krüger et al., 2018; Reisinger et al., 2022a). Addressing these objectives demands investigations of patterns and processes of biodiversity in all their facets, such as species richness, evenness, functional diversity, dispersal, reproduction (including brood care of icefish; Purser et al., 2022), recruitment, growth, and mortality, as well as abundance and biomass. Analyses of such species-specific key traits shall be linked to first-principle process studies to understand the relationship of the sympagic, pelagic and benthic communities, including apex predators, with ecosystem functions and services (see also Sect. 3.3). Moreover, the effect of different spatial scales shall be taken into account, since reduced local biodiversity can lead to a higher spatial species patchiness and higher temporal species turnover with yet unknown consequences for ecosystem stability, resilience and function.

3.2.3 Methods

Information on key taxa shall be collected across various spatial scales at the IEAMaR observatory and adjacent pelagic transects (Fig. 1) by means of various methodological approaches and in parallel to the flux studies (see Sect. 3.1). Phytoplankton and pelagic primary consumers, such as krill, copepods, and young fish larvae, as well as secondary consumers, such as Antarctic silverfish *Pleuragramma antarctica*, shall be studied by CTD and rosette casts and pelagic net catches to assess species composition, abundance, population parameters, and feeding condition, and they shall be compared with data provided by acoustic systems. Benthic surveys shall primarily be conducted by means of minimally invasive methods (e.g. traps, corers, autonomous seabed and under-shelf ice sampling and acoustic as well as optical imaging, and scientific longline fishery) to minimize the anthropogenic impact of invasive sampling methods (e.g. bottom trawls).

Higher-order predator studies shall be continued by the instrumentation of animals with CTD-satellite trackers and biologging devices (e.g. Nachtsheim et al., 2019; Houstin et al., 2022), as well as physiological and nutritional studies. Population estimates and habitat distribution (e.g. LaRue et al., 2021; Wege et al., 2021b) of seal and penguin populations shall be monitored using a combination of air-

borne and Very High Resolution (VHR) satellite imaging, including autonomous year-round observations (Richter et al., 2018; Fretwell and Trathan, 2020). Images will focus on locations representative for the core stations established at regular intervals. Both biologging data and VHR imagery data shall be used to determine critical habitats. As more data become available, we can project distribution changes of these core habitats into the future using climate modelling (e.g. Reisinger et al., 2022a). Oceanographic conditions at emperor penguin foraging hotspots shall be studied using autonomous underwater vehicles that can be deployed from Atka Bay by actively following satellite-tagged specimens. Passive acoustic monitoring data shall be used for larger spatio-temporal scale soundscape studies (Menze et al., 2017) and to investigate how marine mammal occurrence relates to fluctuations in their ice-dominated habitats.

However, recurring sampling and archiving of organisms suitable for molecular analysis (e.g. every five years) shall also take place to ensure ground-truthing of non-invasive methods. A concept which allows a sound identification of ecological key species or functional groups and addresses the limitations of resources (time, taxonomic expertise, sorting effort) shall be developed. Using molecular (meta) barcoding, cryptic species shall be identified. Imaging surveys shall allow for detecting shifts in benthic community composition, species traits, interactions, diversity, biomass and size structure of populations. Existing semi-automated analyses of such images by deep-learning networks (e.g. Schönig et al., 2012) shall be adapted and improved for analysis of SO benthos. The analysis of eDNA shall allow for detecting whole-community changes in biodiversity. Quantitative information on all benthos fractions is important to separate short-term remineralization from long-term burial of carbon and other nutrients.

Once observational and analytical baselines have been established, advanced experimental field studies (e.g. in situ respirometry, <https://www.mbari.org/emerging-science-of-a-high-CO2low-ph-ocean-deep-water-foce/>, last access: 23 August 2022) and long-term video observations of local key species and assemblages within their natural habitats and a focus on interactions shall follow. In combination with on-site laboratory experiments (e.g. at Neumayer Station III), they will help to unravel life-history strategies, life-stage-specific spatial and temporal distributions, and their adaptive scope over generations. Furthermore, internal and external data loggers suitable for smaller marine organisms, such as fish and invertebrates, audio-visual loggers to study foraging behaviour of predators, and long-term tracking of their preferred water temperature and depth, but also of physiological parameters, such as heart rate, blood flow and tissue oxygenation, have come into reach. Semi-permanent moorings and lander systems (see Sect. 3.1) shall serve as a (power) base for those applications and allow for controlled deployment of traps and other gear. Otoliths of fishes shall be

used as an archive of temperature preference and utilized resources in fishes.

Autonomous bio-environmental observatories shall constitute an important pillar of the long-term IEAMaR observatory. By combining multiple sensors on bottom-moored, sea-ice-moored and free-drifting platforms, the spatio-temporal gaps between field campaigns will be closed with high-resolution data. These systems should merge existing state-of-the-art environmental sensors, such as CTDs, nutrient sensors, fluorometers, spectral radiometers and optical sediment traps, with the newest technology to monitor organisms beyond microbes. Examples for such sensors are camera systems; autonomous multi-frequency echosounders (e.g. acoustic zooplankton and fish profilers, wideband autonomous transceiver), which are able to record and transmit data and to receive real-time manipulation of the sampling programme; and automatic eDNA samplers and imaging profilers (e.g. underwater vision profiler).

The pelagic community will be sampled with an ultra-clean CTD and under-way filtration systems for phytoplankton, ship-mounted echosounders, rectangular midwater trawls for plankton and nekton, and multinets and imaging zooplankton profilers (e.g. Lightframe On-sight Key species Investigations, LOKI) for the mesofauna (e.g. Schnack-Schiel et al., 2008; Flores et al., 2014). Net catches will be used to ground-truth biomass and community data derived from continuous sampling with multi-frequency broadband echosounders as well as from autonomous observatories equipped with echosounders. The community under the sea ice will be sampled using under-ice trawls, alongside with physical parameters of the sea ice and underlying water (Castellani et al., 2022), and the sympagic in-ice community composition will be investigated on ice stations by ice core sampling (for sampling strategy see Sect. 3.1.3) using both molecular and morphological techniques (Miller et al., 2015; Monti-Birkenmeier, 2017). Trophic relationships, including match-mismatch phenomena, are to be studied by a variety of methods, such as analyses of gut content and of tissues for lipid composition and isotope ratios, of gonads for maturity, and entire specimens for body conditions.

3.3 Ecosystem services and human impacts

3.3.1 Background

Ecosystem services (ESs), i.e. the benefits that people obtain from ecosystem functions, also called *nature's contributions to people* to compensate for negative effects (Díaz et al., 2018), have received increased attention from stakeholders during recent years. The ES framework aligns economic considerations with nature conservation and thereby addresses diverse and powerful questions (Simpson, 2011). However, the quantification of ESs is one of the greatest challenges of current ecosystem science (Burkhard et al., 2012), especially due to the spatial and temporal variability of ecosys-

tems, particularly in the marine domain (Barbier, 2007). This challenge is aggravated by the fact that many seascapes are under-represented in global assessments (e.g. TEEB, 2012), including the SO, which has not yet been the subject of any detailed regional ES assessment (Grant et al., 2013). The fact that most ESs provided by the oceans, particularly remote marine areas such as the SO, seldom have on-site beneficiaries (for instance, markets for Antarctic fisheries products, such as toothfish, are mainly in Japan and North America; Catarci, 2004) adds to the complexity of the topic. Moreover, the introduction of a payment for ecosystem services (PES) has been discussed for Antarctic tourism (Verbitsky, 2018).

Regulating ESs provided by the SO including the WS are also beneficial to human populations on a global scale, e.g. regarding climate regulation, sea-level rise, carbon sequestration, oxygen production, remineralization of organic matter, and natural genetic heritage and biodiversity (Deininger et al., 2016; Pertierra et al., 2021; Steiner et al., 2021). The long-term IEAMaR concept shall primarily contribute to a better understanding of core ecosystem functions and services regarding two aspects: (1) improving carbon sequestration budgets and (2) contrasting direct human impacts (fishing) and nature conservation efforts.

A meta-analysis revealed that ocean acidification could negatively affect autotrophic organisms, mainly phytoplankton, at CO₂ levels above 1000 µatm and invertebrates above 1500 µatm (Hancock et al., 2020). Hence, Antarctic organisms are likely to be susceptible to ocean acidification and thereby likely to change their contribution to ecosystem services in the future. The SO, especially the coastal parts, is potentially a strong sink for anthropogenic carbon (Arrigo et al., 2008). However, it is also a highly dynamic and heterogeneous region (Gutt et al., 2013a; Tagliabue and Arrigo, 2016; Jones et al., 2017) that is poorly sampled in large areas (Arrigo et al., 2015). The supply of iron is considered to control how much CO₂ is biologically fixed by phytoplankton photosynthesis. There is, however, a lack of knowledge on the magnitude and the importance of different iron sources on phytoplankton productivity, including melting of sea ice and icebergs, dust deposition, and iron recycling by different grazers, with changes to be expected in the future (Trimborn et al., 2017; Böckmann et al., 2021). Furthermore, models of the export production and CO₂ uptake disagree on the processes that lead to the export of organic carbon today, let alone in the future (Laufkötter et al., 2016). These deficiencies in our understanding of biological processes induce large uncertainties in the projections of future primary production (Frölicher et al., 2016) and the oceanic carbon sink, thus hindering the quantification of an important ES from the SO. Research on carbon sequestration is closely linked to research on ecosystem functioning; as a result, this research theme overlaps partially with Sect. 3.1.

The WS is the last SO area where no or only limited fishing has taken place to date. Commercial krill fisheries are concentrated around the Antarctic Peninsula and the Scotia Sea,

where krill abundances are much higher than in the southern and eastern WS (Atkinson et al., 2019). Over almost the last 20 years, longline exploratory fishing for Antarctic toothfish has been carried out on the continental slope in the CCAMLR statistical area 48.6, i.e. off the ice shelf where Neumayer Station III is located and further eastwards (Teschke et al., 2016). Adult Antarctic toothfish are demersal top predators, which can grow to over 2 m in length and reach over 50 years in age. The climate sensitivity of these fish populations (Cheung et al., 2008) and of the marine ecosystems and food webs they are part of is a main reason for the plan to establish a marine protected area (MPA) in this region (Fig. 5; for the scientific justification of the eastern WSMPA phase 2 area, see Lowther et al., 2022). Regarding conservation of biodiversity, special attention has to be paid to rare habitats, since they are especially vulnerable. Examples are poorly researched polar marine habitats, such as the underside of ice shelves and floating glacier tongues or the unusually shallow and especially diverse Norsel Bank in the Kapp Norvegia sub-area. A hierarchical classification of benthic biodiversity has been carried out in the context of assessing protected areas in the Southern Ocean (Douglass et al., 2014), but, in general, an understanding of the mechanisms driving observed or projected changes remains largely unknown, including the role of the relatively high benthic biodiversity for the stability of the entire system.

3.3.2 Objectives

The objectives to quantify carbon sequestration as a major ecosystem service and facilitate the conservation of ecosystem functioning and services of the WS and DML coast are as follows:

- quantify the carbon sink, its change, and drivers and temporal change in the IEAMaR region by analysing oxygen production through primary production and the biologically and physically mediated transport of carbon from the ocean surface to seabed sediments;
- develop a robust understanding of biogeochemical processes from multidisciplinary high-resolution time-series data, which may also be used for model evaluation and development;
- identify key taxa of carbon and nutrient transfer, especially for carbon export, storage and remineralization, to improve future climate scenario projections;
- develop strategies to protect species assemblages based on the knowledge of key species and rare, unique, highly diverse or endemic habitats (including essential habitats for top predators);
- provide the scientific basis to protect environmental features and species (including their populations and life stages) on various geographical scales, which are key to

the functional integrity and viability of regional ecosystems processes;

- establish scientific reference areas to monitor the effects of climate change, fishing and other human activities;
- protect potential refugia for, inter alia, top predators, fish, and other ice-dependent and highly cold-adapted and sympagic species, to support their resilience and ability to adapt to the effects of climate change.

The long-term IEAMaR efforts shall provide the opportunity to study the year-round carbon flux into and out of the mixed layer in relation to meteorological (e.g. wind) and biological drivers (e.g. primary production and composition, abundance, growth, metabolism, and mortality of key grazers). They shall thus contribute to providing a circumpolar assessment of the biological carbon sink structure and the sequestration of CO₂ from the atmosphere for hundreds to thousands of years, including baseline and variability in carbon capture, storage and sequestration components by the sinking of faeces and phytodetritus, and potential changes in the eastern WS region (such as climate-change feedback strength). Moreover, they shall allow for separating the physical from biological processes that lead to a transfer of carbon to the ocean interior and seabed. The carbon flux to the sea floor further determines the redox state of sediments and is positively correlated with the efflux of nutrients and iron (Graham et al., 2015). This positive feedback is pronounced in shallow shelf seas where vertical pathways are short and pelagic–benthic coupling triggered by sedimentation events is enhanced. At least some benthic suspension feeders have significantly increased benthic carbon and silicate storage on the sea floor of the wider IEAMaR region over the last two decades (Gutt et al., 2013b; Barnes, 2015) and contributed to the remineralization of organic matter to be further quantified. IEAMaR data shall provide a sound basis for the development and validation of regional biogeochemical carbon budgets and models. They will also allow for the assessment of changes in the efficiency of carbon export to deeper waters and hence benthic carbon supply, as well as of the fate of other nutrients and the potential carbon sink role of the long-term IEAMaR sites that are representative for the mostly ice-covered high-latitude SO (see also Sect. 3.1).

With reference to the proposed WSMPA, the IEAMaR observatory shall provide the focal point for the research and monitoring activities required in a WSMPA management plan and is important for the regular review of the effectiveness of the WSMPA. To ensure synergistic effects for science and marine conservation policy, the location of the observatory is partly congruent with the proposed WSMPA (Fig. 5). After the adoption of the WSMPA by CCAMLR, the long-term IEAMaR work shall provide research-based long-term data on the natural development of the protected environments and biotas. The sympagic, pelagic and benthic habitats to be monitored because they are at least partly repre-

sentative for the East Antarctic SO rare and especially vulnerable habitats include the shelf-ice associated cryo-benthos (Watanabe et al., 2006; Gutt and Dieckmann, 2021) and benthic communities at unusually shallow sites that are thus exposed to unusual environmental conditions and disturbances (Raguá-Gil et al., 2004). LTER work at the IEAMaR observatory shall also provide insight into the biology, life cycle and trophic role of Antarctic toothfish. Since 2014, every year around 200 t of Antarctic toothfish is caught by fishing vessels operating in the CCAMLR research block 48.6_5 in front of the DML coast (Fig. 5). Combining the information obtained by these longline operations with data obtained by the IEAMaR will allow comparisons of the benthic habitats in this research block with similar habitats in unfished areas to study the physical disturbance and effects of longline fishing. The close proximity and partial overlap of the IEAMaR region with the CCAMLR research block also provide the opportunity to carry out further studies of local and regional food web and ecosystem effects caused by the annual removal of large quantities of *D. mawsoni* as a top demersal predator. Less consumption will certainly have impacts on its prey species and the entire seabed community. In addition to this predation release effect, changes to toothfish abundances caused by fisheries could also impact toothfish predators like Weddell seals and whales (sperm, killer and Arnoux beaked whale).

3.3.3 Methods

During the long-term observations and further complementary scientific work at the IEAMaR observatory, sea-surface $p\text{CO}_2$ in a coastal Antarctic region shall be assessed with high resolution. A $p\text{CO}_2$ sensor (Lai et al., 2018) will be part of a novel mooring design, which is protected against iceberg scouring and shall be deployed in a synoptic approach in combination with other instruments (see Sect. 3.1.3 and 3.2.3 above). Based on these combined data, the physical and biogeochemical carbon transport shall be based on the cross-disciplinary approach described in the sections above. The continuous time series at high-temporal resolution (hourly for sensors, biweekly for sediment traps) shall be used for the evaluation of global and regional biogeochemical models. The gained process understanding shall be used to improve parameterizations of biogeochemical processes in models, e.g. the mechanisms that lead to the formation and disaggregation of sinking particles. Sediment-core studies shall allow monitoring benthic remineralization rates and nutrient efflux in relation with benthic fauna composition, enabling the estimation of changes in the upward mixing of essential nutrients.

Once the Weddell Sea MPA has been approved, the development and implementation of a detailed research and monitoring plan is a task for the CCAMLR members. The then required WSMPA research and monitoring activities would be carried out in the IEAMaR area, making use of or being

supported by the observatory infrastructure (see Sect. 3.1 and 3.2), e.g. by monitoring the temporal variability of benthic fauna with time-lapse cameras. In addition, scientific sampling of the benthic and pelagic fish fauna shall be carried out in areas designated for this purpose. These studies will be designed to complement on the one hand the results of historical fish research carried out in the 1980s and 1990s, e.g. by the Alfred Wegener Institute, and on the other hand the data on toothfish, toothfish prey and bycatch species obtained in the commercial longline operations in the CCAMLR fisheries research block 48.6_5 (Fig. 5). This will contribute to both the development of a stock hypothesis of Antarctic toothfish in the larger Weddell Sea area and the research and monitoring required by the Weddell Sea MPA proposal. Advanced spatially explicit and dynamic ecological modelling that includes biotic and abiotic interactions will allow for an assessment of the effects of disturbances and environmental changes on ecosystem functions and services. A major challenge in such ecological modelling is that a spatial resolution that takes into account on the one hand the limitations of physical projections in downscaling approaches and on the other the small-scale nature of biological patterns must first be found.

4 Added value

4.1 Lessons learned from previous long-term studies in the Southern Ocean

Repeated sampling over decades off the West Antarctic Peninsula and in the Atlantic sector of the SO showed that Antarctic krill stocks (*Euphausia superba*) experienced climate-induced reductions; they partly shifted southward and have partly been replaced by salps (mainly *Salpa thompsoni*; Atkinson et al., 2019; Hill et al., 2019). However, the pelagic ecosystem off the western Antarctic Peninsula is different in that the shelf extends much further than in the East Antarctic SO investigation area. Therefore, it offers more iron sources and leads to an overall more productive ecosystem. In addition, the coastline is much more irregular and provides a special habitat heterogeneity. The Palmer LTER was established in this area in 1990 (Smith et al., 2013), at a time when climate was already changing rapidly in this Antarctic region. Surveys identified changes in pelagic food webs west of the Antarctic Peninsula (Ducklow et al., 2006), where benthic inshore biodiversity has partly increased as a result of long-term glacier retreat at King George Island (Sahade et al., 2015; Zwerschke et al., 2022). However, the trends detected in primary production and for higher trophic levels are inconsistent, largely due to the heterogeneity in sea-ice dynamics that in turn depend on variable meteorological conditions (e.g. Montes-Hugo et al., 2009; Lin et al., 2021), with consequences for oceanic CO_2 uptake (Brown et al., 2019). The early establishment of the Palmer LTER

and additional studies off the West Antarctic Peninsula allowed researchers to detect the impacts of climate change on various marine ecosystems, highlighting the importance of establishing the IEAMaR observatory as early as possible, before the onset of profound climate-change effects in the East Antarctic SO.

In the high-latitude East Antarctic SO, some extremely rare repeated surveys after several years provided insights into an unexpectedly rapid recruitment and growth but also mass mortality of sponges and/or ascidians, e.g. in McMurdo Sound (Ross Sea) (Dayton et al., 2013; Kim et al., 2019) and in the western Weddell Sea off the Larsen ice shelves (Gutt et al., 2011). These findings were related to changing phytoplankton bloom dynamics triggered by ice-shelf disintegration and calving icebergs in combination with altered sea-ice dynamics and iceberg scouring impacts (Gutt and Piepenburg, 2003; Cape et al., 2014; Dayton et al., 2019). New blooms and benthic growth spurred by regional ice-shelf losses can create new carbon sinks, with corresponding feedback ramifications for the climate (Peck et al., 2010; Barnes et al., 2018).

Off Dronning Maud Land, along the prime meridian, and in the Weddell Sea within the wider IEAMaR region, but also elsewhere within the East Antarctic SO, long-term observations have documented a warming trend in deep water properties (Smedsrud, 2005; Strass et al., 2020). The causes remain unclear (Fahrback et al., 2006). More recently, studies of the vertical (Cisewski and Strass, 2016) and horizontal ecosystem structure (Kauko et al., 2021), together with the installation of a multidisciplinary moored ocean observatory along a shelf-slope transect at 6° E (de Steur et al., 2019) revealed large interannual variability of phytoplankton blooms in the region.

Marine soundscapes of biological and physical origin have been monitored continuously since 2008 by the HAFOS network and the marine soundscape monitoring throughout the Weddell Sea area near Neumayer Station III by the Perennial Acoustic Observatory in the Antarctic Ocean (PALAOA). These data revealed rich marine mammal communities that fluctuate in composition throughout the year and are sensitive to environmental anomalies that may increase in frequency under future climate conditions (e.g. Schall et al. 2021; Roca et al., 2022). In addition, the long-term observations of the emperor penguin colony at Atka Bay provide continuous ground-truth calibration data for satellite remote sensing-based pan-Antarctic emperor penguin census studies (Richter et al., 2018). They also shed light on emperor penguin behaviour at sea and showed that juvenile emperor penguins spend the majority of their time outside of proposed and existing marine protected areas and venture as far north as the Antarctic Circumpolar Current (ACC), about 2000 km away from their breeding colony. These findings demonstrate that conservation efforts confined to the SO proper are insufficient to protect emperor penguins. Because of the low fecundity of emperor penguins, the successful recruitment

"Integrated East Antarctic Marine Research" observatory

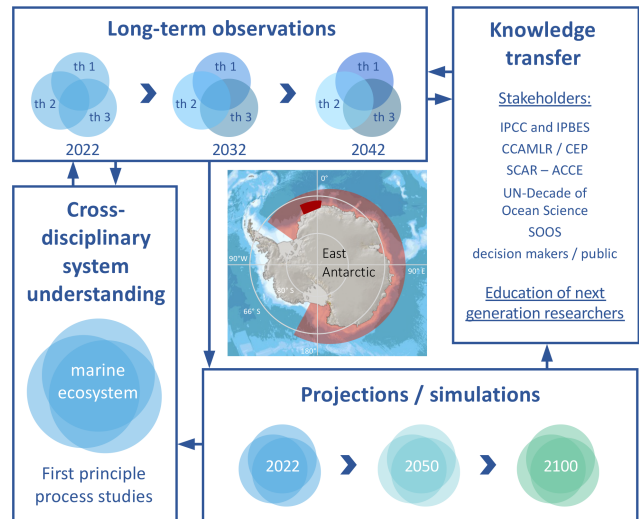


Figure 3. Relationships between approaches, objectives and potential stakeholders of presented Integrated East Antarctic Marine Research (IEAMaR) observatory. The dark red rectangle in the map in the centre indicates where the observatory can be placed within the East Antarctic coastal Southern Ocean (light red, transparent). IPCC: Intergovernmental Panel on Climate Change; IPBES: Intergovernmental Science-Policy Platform on Biodiversity and Ecosystem Services; CCAMLR: Commission for the Conservation of Antarctic Marine Living Resources; CEP: Committee for Environmental Protection; SCAR: Scientific Committee on Antarctic Research; ACCE: *Antarctic Climate Change and the Environment*; SOOS: Southern Ocean Observing System; th: ecological research theme. Bathymetry: Arndt et al. (2013).

of juvenile cohorts is critical for emperor penguin population dynamics (Houstin et al., 2021). Off Coats Land and off western DML southwest of Atka Bay, investigations on the benthos carried out at irregular intervals over three decades indicate trends in taxonomic composition and traits (Pineda-Metz et al., 2020), which are superimposed by variations in sampling approaches and a pronounced small-scale heterogeneity (Gutt et al., 2013a).

The circumpolar Retrospective Analysis of Antarctic Tracking Data of SCAR highlighted areas of ecological significance based on tracking data from 17 SO bird and mammal species over the past 30 years (Hindell et al., 2020; Ropert-Coudert et al., 2020). The study also predicted a long-term net loss of about a tenth of the areas of ecological significance by 2100. The habitat use of these predators indicates biodiversity patterns that require adequate representation in SO conservation and management planning (Reisinger et al., 2022b).

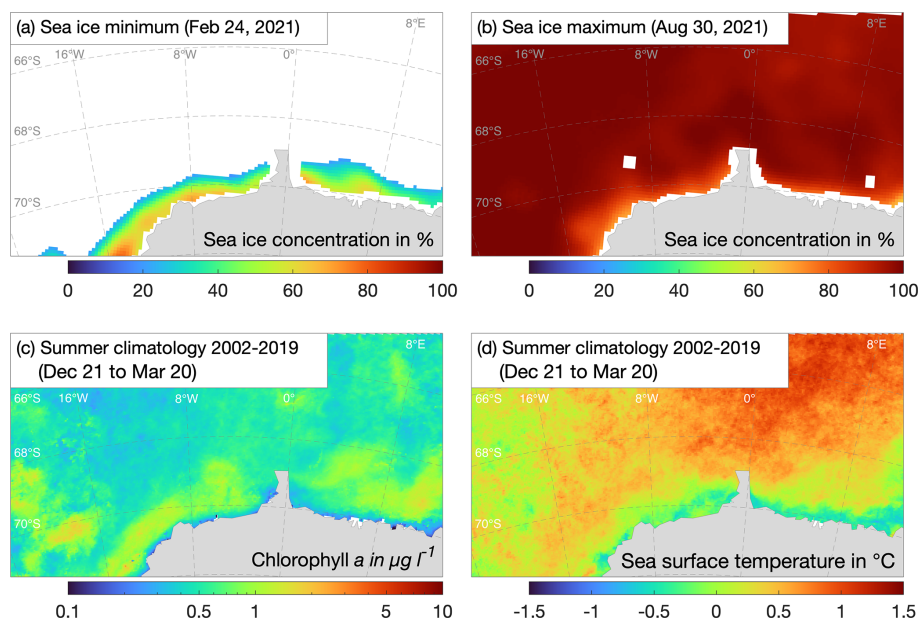


Figure 4. Sea-ice concentration for the minimum and maximum sea-ice extent in 2021, and the summer climatology, i.e. 21 December to 20 March, for the time period 2002–2019 for the sea-surface chlorophyll *a* concentration and temperature in the region of the Integrated East Antarctic Marine Research framework. Sea-ice concentration data were obtained from the EUMETSAT Ocean and Sea Ice Satellite Application Facility (OSI SAF, Lavergne et al., 2019). Sea-surface temperature and chlorophyll *a* concentration were obtained from the ocean colour data distribution site: <http://oceandata.sci.gsfc.nasa.gov/> (last access: 23 August 2022).

4.2 International integration

The ecological complexity to be tackled by the IEAMaR concept both demands and provides the potential for extensive international collaboration. The planned IEAMaR long-term observatory will also complement the work of similar observatories in the maritime Antarctic (e.g. Palmer LTER off the western Antarctic Peninsula) and in other regions in the high-latitude SO. Inter-comparability of methods and data among various LTER efforts shall be a priority in the implementation of the planned observation and activities in the IEAMaR region. In addition, this observatory can serve as a showcase project within the Southern Ocean Observing System (SOOS; Rintoul et al., 2012; Newman et al., 2019). In the first Antarctic and Southern Ocean Horizon Scan of SCAR (Kennicutt et al., 2014), the scientific community identified the need for a better understanding of systems, which can only be achieved by targeted long-term observations, measurements and analyses. The long-term IEAMaR work can significantly build upon the recently ended SCAR biology programmes Antarctic Thresholds – Ecosystem Resilience and Adaptation (AnT-ERA; Gutt et al., 2013c) and State of the Antarctic Ecosystem (Ant-ECO), as well as the ongoing programme Ant-ICON, and benefit from their networks of communication between experts. Moreover, the IEAMaR initiative shall underpin the efforts within CCAMLR to establish the WSMaPA (Teschke et al., 2020b), by providing key reference sites to establish the re-

quired WSMaPA research and monitoring plan, and enrich various national research programmes in the wider IEAMaR region. All data acquired during the IEAMaR work shall be stored in international data repositories with general scope or maintaining specific information for standard analyses. For example, surface $p\text{CO}_2$ data shall be submitted to the annual updates of the Surface Ocean CO_2 Atlas (SOCAT) (Bakker et al., 2016), which is widely used for studies on a regional and global scale. SOCAT, in turn, informs the Global Carbon Project for its annual update of the Global Carbon Budget. Biogeographic and biological trait data shall be made available through the SCAR Antarctic Biodiversity Portal (<https://www.biodiversity.aq>, last access: 23 August 2022), whilst a broad variety of other ecological data shall be published in the PANGAEA Data Publisher for Earth and Environmental Science (<https://www.pangaea.de>, last access: 23 August 2022). Genetic and biodiversity data can further be stored in the Barcode of Life Data System (<https://www.boldsystems.org>, last access: 23 August 2022).

The Southern Ocean and Antarctic continent are managed within the framework of the Antarctic Treaty System, which is based upon scientific understanding and environmental protection. Some of the societal needs and challenges may overlap with a global context, while others are and will remain unique (Van de Putte et al., 2021). In general, all information, including data and their interpretation shall contribute to international scientific assessment programmes, such as IPCC and IPBES, and other advisory bodies (Fig. 3).



Figure 5. Proposed regions for a Weddell Sea marine protected area (WSMPA) phase 1 and phase 2. Modified from the AWI fact sheet *Weddell Sea: 8 Reasons for a Marine Protected Area* (https://www.awi.de/fileadmin/user_upload/AWI/Ueberuns/Service/Presse/2021/1_Quartal/KM_Update_Infomaterial_WSMPA/Factsheet_Weddell_Sea_SinglePages.pdf, last access 23 August 2022). Map design by Yves Nowak, AWI.

4.3 Synergies

The long-term observational IEAMaR work will provide a unique opportunity to collect a comprehensive set of physical, geochemical, and biological key data, eEOVs and EBVs, from all three main marine ecosystem compartments (sea ice, water column and sea floor) on a regular basis. It shall employ a highly cross-disciplinary approach, integrating various research fields to gather physical–chemical information about marine environments, their exchange with other Earth system compartments, and investigate biological and ecological processes over a wide range of scales, from biomolecules to organisms to ecosystems and from weeks to decades (Constable et al., 2016; Gutt et al., 2018). Importantly, the integration of the research needed for the proposed WSMPA and the long-term IEAMaR concept shall bring fishery scientists and marine ecologists together, with experts from all the CCAMLR member states, to explore the benefits of cross-science approaches and international collaboration (Teschke et al., 2020b).

Long-term observational and other scientific work in the IEAMaR region, being representative of the Antarctic Coastal Current (ACoC) in combination with the Weddell Gyre, will benefit from the fact that this area has already been

sampled for decades. For example, Fimbul is (i) the southernmost part of the long-term hydrographic repeat section along the prime meridian between South Africa and Antarctica (e.g. van Heuven et al., 2011) and (ii) the eastern part of a hydrographic transect through the entire WS that starts off at Kapp Norvegia (Fig. 1; Strass et al., 2020). A novelty, and an added value, of the IEAMaR framework shall be the establishment of a coordinated and integrated ecological programme in the eastern SO, applying highly standardized protocols for the sampling of material, analyses and observations to make the results directly comparable with comparative studies over space and time. On a wider geographic scale, the long-term IEAMaR observatory in the eastern WS and DML coast shall be integrated with similar research performed in the Filchner–Ronne region in the southernmost WS (e.g. Hellmer et al., 2012; Daae et al., 2020) and with the above-mentioned three hydrographic transects in their entire lengths far to the north and west, respectively. Moreover, comparisons shall be possible between the currently still relatively stable East Antarctic IEAMaR sub-areas with the already drastically changing regions east and west of the Antarctic Peninsula (e.g. Lin et al., 2021).

The concept presented herein shall also be well suited to raise the awareness of the public, including school classes, for a healthy marine biosphere. Moreover, it shall provide perfect opportunities for education and training of a future generation of polar researchers through the generation of unique occasions for joint cross-disciplinary data analyses and thematically targeted fieldwork, which provides results that are highly relevant to society (Kennicutt et al., 2014; Xavier et al., 2019).

5 Conclusions

A major conclusion from global and regional assessments is that the detection of the impacts of climate change on ecosystems demands long-term ecological observations and an improved understanding of ecosystem functioning and its drivers (Rogers et al., 2020). Such studies can also provide insights into ecological processes in an applied context, e.g. climate-driven modifications of ecosystem services such as oxygen production and biological CO₂ uptake or potential changes resulting from other anthropogenic impacts. Closing knowledge gaps in this context would provide a sound and independent basis for the current discussion – especially on a global reduction of greenhouse gases, since transformation strategies, proposed for intensively used ecosystems and nature-based solutions, are hardly options for the Antarctic. Such studies can also provide valuable information on the effectiveness of the proposed WSMPA. The pressure from stakeholders to address such unanswered applied ecological questions should foster coordinated cross-disciplinary and international research, in which major advances are to be expected in more than single disciplines. The envisaged frame-

work for long-term studies in the IEAMaR region will also increase our knowledge about first-principle issues, e.g. on energy flow in food webs and on biodiversity patterns including their dynamics. The collected data are to be made publicly available for policy makers to facilitate appropriate actions and recommendations. Furthermore, the expected findings of IEAMaR studies shall be suitable for publication in textbooks and in public media.

The stand-alone feature of the IEAMaR concept lies in the particularly extensive integration of long-term physical, geochemical and biological research, which allows for gaining unique ecological insights. The profoundly enhanced system understanding will provide evidence for temporal variabilities of both environment and biodiversity, which can be attributed with high confidence to ongoing climate change or variability. The data will also feed into ecological projections in response to anthropogenic climate change, as well as fishing pressure. Both kinds of results are urgently demanded by forthcoming IPCC and IPBES reports and address some of the aims of the UN Sustainable Development Goals, especially no. 13 “Take urgent action to combat climate change and its impacts” and no. 14 “Conserve and sustainably use the oceans, seas and marine resources for sustainable development”. These initiatives and other assessments have the final aim to contribute through a healthy environment to the well-being of humans also in remote large areas such as the SO.

Data availability. The data (sets) used for the illustrations in some figures are referenced in the figure captions: bathymetry (water depth) in Fig. 1 (Dorschel et al., 2022); bathymetry in Figs. 2a and 3 (Arndt et al., 2013); and sea ice, chlorophyll, and temperature in Fig. 4 (Lavergne et al., 2019, and <http://oceandata.sci.gsfc.nasa.gov/>, last access: 23 August 2022). No additional data sets were used in this publication.

Author contributions. JG, DP and FCM contributed the most to the concept development, wrote the main part of the paper including conclusions, and contributed to Sects. 1–3. HG and AVdP contributed to the general concept and text; HOP to the international implementation; SA, OE, CHa, MH, TH, EI, MJ, SM, and STr mainly to Sect. 3.1; DKAB, CHe, HB, HF, CLB, HL, FM, FS, IvO, MW, and DZ to Sect. 3.2; and TB, SH, SM, KT, and ST to Sect. 3.3. All authors reviewed and finalized the paper.

Competing interests. At least one of the (co-)authors is a guest member of the editorial board of *Biogeosciences* for the special issue “The Weddell Sea and the ocean off Dronning Maud Land: unique oceanographic conditions shape circumpolar and global processes – a multi-disciplinary study (OS/BG/TC inter-journal SI)”. The peer-review process was guided by an independent editor, and the authors also have no other competing interests to declare.

Disclaimer. Publisher’s note: Copernicus Publications remains neutral with regard to jurisdictional claims in published maps and institutional affiliations.

Special issue statement. This article is part of the special issue “The Weddell Sea and the ocean off Dronning Maud Land: unique oceanographic conditions shape circumpolar and global processes – a multi-disciplinary study (OS/BG/TC inter-journal SI)”. It is not associated with a conference.

Acknowledgements. Thanks are due to Rebecca Konijnenberg, Hendrik Pehle and Yves Nowak (all AWI) for the design of Figs. 2 and 4.

Financial support. Stefanie Arndt, Heike Link and Christoph Held have received financial support from the Deutsche Forschungsgemeinschaft (DFG) in the framework of the priority programme 1158 “Antarctic Research with Comparative Investigations in Arctic Sea Ice Areas”.

The article processing charges for this open-access publication were covered by the Alfred Wegener Institute, Helmholtz Centre for Polar and Marine Research (AWI).

Review statement. This paper was edited by Carol Robinson and reviewed by Paul Dayton and Karen J. Heywood.

References

- Arndt, J. E., Schenke, H. W., Jakobsson, M., Nitsche, F. O., Buys, G., Goleby, B., Rebesco, M., Bohoyo, F., Hong, J., Black, J., Greku, R., Udintsev, G., Barrios, F., Reynoso-Peralta, W., Taisei, M., and Wigley, R.: The International Chart of the Southern Ocean (IBCSO) – digital bathymetric model, Version 1.0 – A new bathymetric compilation covering circum-Antarctic waters, *Geophys. Res. Lett.*, 40, 3111–3117, <https://doi.org/10.1002/grl.50413>, 2013.
- Arndt, S., Hoppmann, M., Schmithüsen, H., Fraser, A. D., and Nicolaus, M.: Seasonal and interannual variability of landfast sea ice in Atka Bay, Weddell Sea, Antarctica, *The Cryosphere*, 14, 2775–2793, <https://doi.org/10.5194/tc-14-2775-2020>, 2020.
- Arntz, W. E. and Clarke, A. (Eds.): *Ecological Studies in the Antarctic Sea Ice Zone*, Springer, Berlin, Germany, <https://doi.org/10.1007/978-3-642-59419-9>, 2002.
- Arrigo, K. R., Dijken, G., and Long, M.: Coastal Southern Ocean: A strong anthropogenic CO₂ sink, *Geophys. Res. Lett.*, 35, L21602, <https://doi.org/10.1029/2008GL035624>, 2008.
- Arrigo, K. R., van Dijken, G. L., and Strong, A. L.: Environmental controls of marine productivity hot spots around Antarctica, *J. Geophys. Res.-Oceans*, 120, 5545–5565, <https://doi.org/10.1002/2015JC010888>, 2015.
- Atkinson, A., Hill, S. L., Pakhomov, E. A., Siegel, Reiss, C. S., Loeb, V. J., Steinberg, D. K., Schmidt, K., Tarling, G. A., Ger-

- rish, L., and Sailley, S. F.: Krill (*Euphausia superba*) distribution contracts southward during rapid regional warming, *Nat. Clim. Change*, 9, 142–147, <https://doi.org/10.1038/s41558-018-0370-z>, 2019.
- Bakker, D. C. E., Pfeil, B., Landa, C. S., Metzl, N., O'Brien, K. M., Olsen, A., Smith, K., Cosca, C., Harasawa, S., Jones, S. D., Nakaoka, S., Nojiri, Y., Schuster, U., Steinhoff, T., Sweeney, C., Takahashi, T., Tilbrook, B., Wada, C., Wanninkhof, R., Alin, S. R., Balestrini, C. F., Barbero, L., Bates, N. R., Bianchi, A. A., Bonou, F., Boutin, J., Bozec, Y., Burger, E. F., Cai, W.-J., Castle, R. D., Chen, L., Chierici, M., Currie, K., Evans, W., Featherstone, C., Feely, R. A., Fransson, A., Goyet, C., Greenwood, N., Gregor, L., Hankin, S., Hardman-Mountford, N. J., Harlay, J., Hauck, J., Hoppema, M., Humphreys, M. P., Hunt, C. W., Huss, B., Ibáñez, J. S. P., Johannessen, T., Keeling, R., Kitidis, V., Körtzinger, A., Kozyr, A., Krasakopoulou, E., Kuwata, A., Landschützer, P., Lauvset, S. K., Lefèvre, N., Lo Monaco, C., Manke, A., Mathis, J. T., Merlivat, L., Millero, F. J., Monteiro, P. M. S., Munro, D. R., Murata, A., Newberger, T., Omar, A. M., Ono, T., Paterson, K., Pearce, D., Pierrot, D., Robbins, L. L., Saito, S., Salisbury, J., Schlitzer, R., Schneider, B., Schweitzer, R., Sieger, R., Skjelvan, I., Sullivan, K. F., Sutherland, S. C., Sutton, A. J., Tadokoro, K., Telszewski, M., Tuma, M., van Heuven, S. M. A. C., Vandemark, D., Ward, B., Watson, A. J., and Xu, S.: A multi-decade record of high-quality $f\text{CO}_2$ data in version 3 of the Surface Ocean CO_2 Atlas (SOCAT), *Earth Syst. Sci. Data*, 8, 383–413, <https://doi.org/10.5194/essd-8-383-2016>, 2016.
- Balaguer, J., Koch, F., Hassler, C., and Trimborn, S.: Iron and manganese co-limit the growth of two phytoplankton groups dominant at two locations of the Drake Passage, *Biol. Comm.*, 5, 207, <https://doi.org/10.1038/s42003-022-03148-8>, 2022.
- Barbier, E. B.: Valuing ecosystem services as productive inputs, *Econ. Policy*, 22, 177–229, <https://doi.org/10.1111/j.1468-0327.2007.00174.x>, 2007.
- Barnes, D. K. A.: Antarctic sea ice losses drive gains in benthic carbon drawdown, *Curr. Biol.*, 25, 789–790, <https://doi.org/10.1016/j.cub.2015.07.042>, 2015.
- Barnes, D. K. A. and Kuklinski, P.: Bryozoans of the Weddell Sea continental shelf, slope and abyss: did marine life colonize the Antarctic shelf from deep water, outlying islands or in situ refugia following glaciations?, *J. Biogeogr.*, 37, 1648–1656, <https://doi.org/10.1111/j.1365-2699.2010.02320.x>, 2010.
- Barnes, D. K. A., Fleming, A., Sands, C. J., Quartino, M. L., Deregibus, D., Chester, J., and Quartino, M. L.: Icebergs, sea ice, blue carbon and Antarctic climate feedbacks, *Philos. T. Roy. Soc. A*, 376, 20170176, <https://doi.org/10.1098/rsta.2017.0176>, 2018.
- Beja, J., Vandepitte, L., Benson, A., Van de Putte, A., Lear, D., De Pooter, D., Moncoiffé, G., Nicholls, J., Wambiji, N., Miloslavich, P., and Gerovasileiou, V.: Chapter Two – Data services in ocean science with a focus on the biology, in: *Ocean Science Data*, edited by: Manzella, G. and Novellino, A., Elsevier, 67–129, <https://doi.org/10.1016/B978-0-12-823427-3.00006-2>, 2021.
- Berger, S., Drews, R., Helm, V., Sun, S., and Pattyn, F.: Detecting high spatial variability of ice shelf basal mass balance, *Roi Baudouin Ice Shelf, Antarctica, The Cryosphere*, 11, 2675–2690, <https://doi.org/10.5194/tc-11-2675-2017>, 2017.
- Bester, M. N., Wege, M., Oosthuizen, W. C., and Bornemann, H.: Ross seal distribution in the Weddell Sea: fact and fallacy, *Polar Biol.*, 43, 35–41, <https://doi.org/10.1007/s00300-019-02610-4>, 2020.
- Bittig, H. C., Körtzinger, A., Neill, C., van Ooijen, E., Plant, J. N., Hahn, J., Johnson, K. S., Yang, B., and Emerson, S. R.: Oxygen optode sensors: principle, characterization, calibration, and application in the ocean, *Front. Mar. Sci.*, 4, 429, <https://doi.org/10.3389/fmars.2017.00429>, 2018.
- Böckmann, S., Koch, F., Meyer, B., Pausch, F., Iversen, M., Driscoll, R., Laglera, L. M., Hassler, C., and Trimborn, S.: Salp fecal pellets release more bioavailable iron to Southern Ocean phytoplankton than krill fecal pellets, *Curr. Biol.* 31, 2737–2746, <https://doi.org/10.1016/j.cub.2021.02.033>, 2021.
- Boss, E., Guidi, L., Richardson, M. J., Stemmann, L., Gardner, W., Bishop, J. K. B., Anderson, R. F., and Sherrell, R. M.: Optical techniques for remote and in-situ characterization of particles pertinent to GEOTRACES, *Prog. Oceanogr.*, 133, 43–54, <https://doi.org/10.1016/j.pocean.2014.09.007>, 2015.
- Brandt, A., Gutt, J., Hildebrandt, M., Pawlowski, J., Schwendner, J., Soltwedel, T., and Thomsen, L.: Cutting the umbilical: new technological perspectives in benthic deep-sea research, *J. Mar. Sci. Eng.* 4, 36, <https://doi.org/10.3390/jmse4020036>, 2016.
- Brasier, M. J., Barnes, D., Bax, N., Brandt, A., Christianson, A. B., Constable, A. J., Downey, R., Figuerola, B., Griffiths, H., Gutt, J., Lockhart, S., Morley, S. A., Post, A. L., Van de Putte, A., Saeedi, H., Stark, J. S., Sumner, M., and Waller, C. L.: Responses of Southern Ocean seafloor habitats and communities to global and local drivers of change, *Front. Mar. Sci.*, 8, 622721, <https://doi.org/10.3389/fmars.2021.622721>, 2021.
- Brett, G. M., Irvin, A., Rack, W., Haas, C., Langhorne, P. J., and Leonard, G. H.: Variability in the distribution of fast ice and the sub-ice platelet layer near McMurdo Ice Shelf, *J. Geophys. Res.-Oceans*, 125, 2019JC015678, <https://doi.org/10.1029/2019JC015678>, 2020.
- Brown, M. S., Munro, D. R., Feehan, C. J., Sweeney, C., Ducklow, H. W., and Schofield, O. M.: Enhanced oceanic CO_2 uptake along the rapidly changing West Antarctic Peninsula, *Nat. Clim. Chang.*, 9, 678–683, <https://doi.org/10.1038/s41558-019-0552-3>, 2019.
- Burkhard, B., Kroll, F., Nedkov, S., and Müller, F.: Mapping ecosystem service supply, demand and budgets, *Ecol. Indic.*, 21, 17–29, <https://doi.org/10.1016/j.ecolind.2011.06.019>, 2012.
- Cape, M. R., Vernet, M., Kahru, M., and Spreen, G.: Polynya dynamics drive primary production in the Larsen A and B embayments following ice shelf collapse, *J. Geophys. Res.-Oceans*, 119, 572–594, <https://doi.org/10.1002/2013JC009441>, 2014.
- Castellani, G., Veyssièrè, G., Karcher, M., Stroeve, J., Banas, S. N., Bouman, A. H., Brierley, S. A., Connan, S., Cottier, F., Große, F., Hobbs, L., Katlein, C., Light, B., McKee, D., Orkney, A., Proud, R., and Schourup-Kristensen, V.: Shine a light: Under-ice light and its ecological implications in a changing Arctic Ocean, *Ambio*, 51, 307–317, <https://doi.org/10.1007/s13280-021-01662-3>, 2022.
- Catardi, C.: World markets and industry of selected commercially exploited aquatic species with an international conservation profile, *FAO Fisheries Circular*, Food and Agriculture Organization (FAO), Rome, ISSN 0429-9329, 2004.
- Cavanagh, R., Melbourne-Thomas, J., Grant, S. M., Barnes, D. K. A., Hughes, K. A., Halfter, S., Meredith, M. P., Murphy, E. J., Trebilco, R., and Hill, S. L.: Future risk for Southern

- Ocean ecosystems: changing physical environments and anthropogenic pressures in an Earth system, *Front. Mar. Sci.*, 7, 615214, <https://doi.org/10.3389/fmars.2020.615214>, 2021.
- Cheung, W. W. L., Lam, V. W. Y., and Pauly, D.: Modelling present and climate-shifted distribution of marine fishes and invertebrates, *Fish. Cent. Res. Rep.*, 16, 1–72, 2008.
- Cisewski, B. and Strass, V. H.: Acoustic insights into the zooplankton dynamics of the eastern Weddell Sea, *Progr. Oceanogr.*, 144, 62–92, <https://doi.org/10.1016/j.pocean.2016.03.005>, 2016.
- Clarke, A., Arntz, W. E., and Smith, C. R. (Eds.): EASIZ: Ecology of the Antarctic Sea Ice Zone, *Deep-Sea Res. Pt. II*, 53, 803–1140, <https://doi.org/10.1016/j.dsr2.2006.05.001>, 2006.
- Constable, A. J., Costa, D. P., Schofield, O., Newman, L., Urban Jr, E. R., Fulton, E. A., Melbourne-Thomas, J., Ballerini, T., Boyd, P. W., Brandt, A., de la Mare, W. K., Edwards, M., Eléaume, M., Emmerson, L., Fennel, K., Fielding, S., Griffiths, H., Gutt, J., Hindell, M. A., Hofmann, E. E., Jennings, S., La, H.-S., McCurdy, A., Mitchell, B. G., Moltmann, T., Muelbert, M., Murphy, E., Press, A. J., Raymond, B., Reid, K., Reiss, C., Rice, J., Salter, I., Smith, D. C., Song, S., Southwell, C., Swadling, K. M., Van de Putte, A., and Willis, Z.: Developing priority variables (“ecosystem Essential Ocean Variables” – eEOVs) for observing dynamics and change in Southern Ocean ecosystems, *J. Mar. Syst.*, 161, 26–41, <https://doi.org/10.1016/j.jmarsys.2016.05.003>, 2016.
- Cristofari, R., Liu, X., Bonadonna, F., Cherel, Y., Pistorius, P., Le Maho, Y., Raynaud, V., Stenseth, N. C., Le Bohec, C., and Trucchi, E.: Climate-driven range shifts of the king penguin in a fragmented ecosystem, *Nat. Clim. Chang.*, 8, 245–251, <https://doi.org/10.1038/s41558-018-0084-2>, 2018.
- Daae, K., Hattermann, T., Darelus, E., Mueller, R. D., Naughten, K. A., Timmermann, R., and Hellmer, H. H.: Necessary conditions for warm inflow toward the Filchner Ice Shelf, Weddell Sea, *Geophys. Res. Lett.*, 47, e2020GL089237, <https://doi.org/10.1029/2020GL089237>, 2020.
- David, C. L., Schaafsma, F. L., van Franeker, J. A., Pakhomov, E. A., Hunt, B. P. V., Lange, B. A., Castellani, G., Brandt, A., and Flores, H.: Sea-ice habitat minimizes grazing impact and predation risk for larval Antarctic krill, *Polar Biol.*, 44, 1175–1193, <https://doi.org/10.1007/s00300-021-02868-7>, 2021.
- Dayton, P. K., Kim, S., Jarrell, S. C., Oliver, J. S., Hammerstrom, K., Fisher, J. L., O’Connor, K., Barber, J. S., Robilliard, G., Bary, J., Thurber, A. R., and Conlan, K.: Recruitment, growth and mortality of an Antarctic hexactinellid sponge, *Anoxyca lyx joubini*, *PLOS ONE*, 8, e56939, <https://doi.org/10.1371/journal.pone.0056939>, 2013.
- Dayton, P. K., Jarrell, S. C., Kim, S., Parnell, P. E., Thrush, S. F., Hammerstrom, K., and Leichter, J. J.: Benthic responses to an Antarctic regime shift: food particle size and recruitment biology, *Ecol. Appl.*, 29, e01823, <https://doi.org/10.1002/eap.1823>, 2019.
- De Broyer, C., Koubbi, P., Griffiths, H. J., Raymond, B., d’Udekem d’Acoz, C., Van de Putte, A. P., Danis, B., David, B., Grant, S., Gutt, J., Held, C., Hosie, G., Huettmann, F., Post, A., and Robert-Coudert, Y.: Biogeographic Atlas of the Southern Ocean, SCAR, Cambridge, ISBN 978-0-948277-28-3, 2014.
- de Lavergne, C., Palter, J. B., Galbraith, E. D., Bernardello, R., and Marinov, I.: Cessation of deep convection in the open Southern Ocean under anthropogenic climate change, *Nat. Commun.*, 4, 278–282, 2014.
- de Steur, L., Gutt, J., and Moreau, S.: Report from the workshop on the development of the Weddell Sea-Dronning Maud Land Regional Working Group, SOOS Report Series, 9, Zenodo, <https://doi.org/10.5281/zenodo.3941419>, 2019.
- Deiningner, M., Koellner, T., Brey, T., and Teschke, K.: Towards mapping and assessing antarctic marine ecosystem services – The weddell sea case study, *Ecosyst.*, 22, 174–192, <https://doi.org/10.1016/j.ecoser.2016.11.001>, 2016.
- Díaz, S., Pascual, U., Stenseke, M., Martín-López, B., Watson, R. T., Molnár, Z., Hill, R., Chan, K. M. A., Baste, I. A., Brauman, K. A., Polasky, S., Church, A., Lonsdale, M., Larigauderie, A., Leadley, P. W., van Oudenhoven, A. P. E., van der Plaats, F., Schröter, M., Lavorel, S., Aumeeruddy-Thomas, Y., Bukvareva, E., Davies, K., Demissew, S., Erpul, G., Failler, P., Guerra, C. A., Hewitt, C. L., Keune, H., Lindley, S., and Shirayama, Y.: Assessing nature’s contributions to people, *Science*, 359, 270–272, <https://doi.org/10.1126/science.aap8826>, 2018.
- Dorschel, B., Hehemann, L., Viquerat, S., Warnke, F., Dreutter, S., Schulze Tenberge, Y., Accetella, D., An, L., Barrios, F., Bazhenova, E. A., Black, J., Bohoyo, F., Davey, C., de Santis, L., Escutia Dotti, C., Fremand, A. C., Fretwell, P. T., Gales, J. A., Gao, J., Gasperini, L., Greenbaum, J. S., Henderson Jencks, J., Hogan, K. A., Hong, J. K., Jakobsson, M., Jensen, L., Kool, J., Larin, S., Larter, R. D., Leitchenkov, G. L., Loubrieu, B., Mackay, K., Mayer, L., Millan, R., Morlighem, M., Navidad, F., Nitsche, F.-O., Nogi, Y., Pertuisot, C., Post, A. L., Pritchard, H. D., Purser, A., Rebesco, M., Rignot, E., Roberts, J. L., Rovere, M., Ryzhov, I., Sauli, C., Schmitt, T., Silvano, A., Smith, J. E., Snaith, H., Tate, A., Tinto, K., Vandenbossche, P., Weatherall, P., Wintersteller, P., Yang, C., Zhang, T., and Arndt, J. E.: The International Bathymetric Chart of the Southern Ocean Version 2 (IBCSO v2), PANGAEA, <https://doi.org/10.1594/PANGAEA.937574>, 2022.
- Douglass, L. L., Turner, J., Grantham, H. S., Kaiser, S., Constable, A., Nicoll, R., Raymond, B., Post, A., Brandt, A., and Beaver, D.: A Hierarchical Classification of Benthic Biodiversity and Assessment of Protected Areas in the Southern Ocean, *PLOS ONE* 9, e100551, <https://doi.org/10.1371/journal.pone.0100551>, 2014.
- Ducklow, H. W., Baker, K., Martinson, D. G., Quetin, L. B., Ross, R. M., Smith, R. C., Stammerjohn, S. E., Vernet, M., and Fraser, W.: Marine pelagic ecosystems: the West Antarctic Peninsula, *Philos. T. Roy. Soc. B*, 362, 67–94, <https://doi.org/10.1098/rstb.2006.1955>, 2006.
- Eayrs, C., Li, X., Raphael, M. N., and Holland, D. M.: Rapid decline in Antarctic sea ice in recent years hints at future change, *Nat. Geosci.*, 14, 460–464, <https://doi.org/10.1038/s41561-021-00768-3>, 2021.
- Eisen, O., Berger, S., and Hoffmann, H.: Kottas-Kohnentraverse-Dichte 2018/2019, in: Expeditions to Antarctica: ANT-Land 2018/19 Neumayer Station III, Kohnen Station, Flight Operations and Field Campaigns, edited by: Fromm, T., Oberdieck, C., Heitland, T., and Köhler, P.: Berichte zur Polar- und Meeresforschung, 733, 1–143, https://doi.org/10.2312/BzPM_0733_2019, 2019.
- Eisen, O., Zeising, O., Steinhage, D., Berger, S., Hattermann, T., Pattyn, F., Trumpik, N., Wehner, I., Korger, I., and Stakemann, J.: MIMO-EIS – Monitoring melt where Ice Meets Ocean – Continuous observation of ice-shelf basal melt on Ekström Ice Shelf, Antarctica, in: Expeditions to Antarctica: ANT-Land 2019/20

- Neumayer Station III, Kohlen Station, Flight Operations and Field Campaigns, edited by: Fromm, T., Oberdieck, C., Matz, T., and Wesche, C.: *Berichte zur Polar- und Meeresforschung*, 745, 1–118, https://doi.org/10.2312/BzPM_0745_2020, 2020.
- Fahrbach, E., Hoppema, M., Rohardt, G., Schröder, M., and Wisotzki, A.: Causes of deep-water variation: Comment on the paper by L. H. Smedsrud “Warming of the deep water in the Weddell Sea along the Greenwich meridian: 1977–2001”, *Deep-Sea Res. Pt. I*, 53, 574–577, <https://doi.org/10.1016/j.dsr.2005.12.003>, 2006.
- Fahrbach, E., Hoppema, M., Rohardt, G., Boebel, O., Klatt, O., and Wisotzki, A.: Warming of deep and abyssal water masses along the Greenwich meridian on decadal time-scales: The Weddell gyre as a heat buffer, *Deep-Sea Res. Pt. II*, 58, 2509–2523, <https://doi.org/10.1016/j.dsr2.2011.06.007>, 2011.
- Filun, D., Thomisch, K., Boebel, O., Brey, T., Širović, A., Spiesecke, S., and Van Opzeeland, I.: Frozen verses: Antarctic minke whales (*Balaenoptera bonaerensis*) call predominantly during austral winter, *R. Soc. Open Sci.*, 7, 192112, <https://doi.org/10.1098/rsos.192112>, 2020.
- Fischer, M., Bossdorf, O., Gockel S., Hänsel, F., Hemp, A., Hessemöller, D., Korte, G., Nieschulze, J. Pfeiffer, S., Prati, D., Renner, S., Schöning, I., Schumacher, U., Wells, K., Buscot, F., Kalko, E. K. V., Linsenmair, K. E., Schulze, E.-D., and Weisser, W. W.: Implementing large-scale and long-term functional biodiversity research: The Biodiversity Exploratories, *Basic Appl. Ecol.*, 11, 473–485, <https://doi.org/10.1016/j.baae.2010.07.009>, 2010.
- Flores, H., Atkinson, A., Kawaguchi, S., Krafft, B. A., Milinevsky, G., Nicol, S., Reiss, C., Tarling, G. A., Werner, R., Bravo Rebolledo, E., Cirelli, V., Cuzin-Roudy, J., Fielding, S., van Franeker, J. A., Groeneveld, J. J., Haraldsson, M., Lombana, A., Marschoff, E., Meyer, B., Pakhomov, E. A., Van de Putte, A. P., Rombolá, E., Schmidt, K., Siegel, V., Teschke, M., Tonkes, H., Toullec, J. Y., Trathan, P. N., Tremblay, N., and Werner, T.: Impact of climate change on Antarctic krill, *Mar. Ecol. Progr. Ser.*, 458, 1–19, <https://doi.org/10.3354/meps09831>, 2012.
- Flores, H., Hunt, B. P. V., Kruse, S., Pakhomov, E. A., Siegel, V., van Franeker, J. A., Strass, V., van de Putte, A. P., Meesters, E. H. W. G., and Bathmann, U. V.: Seasonal changes in the vertical distribution and community structure of Antarctic macrozooplankton and micronekton, *Deep-Sea Res. Pt. I*, 84, 127–141, <https://doi.org/10.1016/j.dsr.2013.11.001>, 2014.
- Fretwell, P. T., LaRue, M. A., Morin, P., Kooyman, G. L., Wiencke, B., Ratcliffe, N., Fox, A. J., Fleming, A. H., Porter, C., and Trathan, P. N.: An Emperor Penguin Population Estimate: The First Global Synoptic Survey of a Species from Space, *PLOS ONE*, 7, e33751, <https://doi.org/10.1371/journal.pone.0033751>, 2012.
- Frölicher, T. L., Rodgers, K. B., Stock, C. A., and Cheung, W. W. L.: Sources of uncertainties in 21st century projections of potential ocean ecosystem stressors, *Global Biogeochem. Cy.*, 30, 1224–1243, <https://doi.org/10.1002/2015GB005338>, 2016.
- Graham, R. M., De Boer, A. M., van Sebille, E., Kohfeld, K. E., and Schlosser, C.: Inferring source regions and supply mechanisms of iron in the Southern Ocean from satellite chlorophyll data, *Deep-Sea Res. Pt. I*, 104, 9–25, <https://doi.org/10.1016/j.dsr.2015.05.007>, 2015.
- Grant, S. M., Hill, S. L., Trathan, P. N., and Murphy, E. J.: Ecosystem services of the Southern Ocean: trade-offs in decision-making, *Antarct. Sci.*, 25, 603–617, <https://doi.org/10.1017/S0954102013000308>, 2013.
- Griffiths, H. J., Meijers, A. J. S., and Bracegirdle, T. J.: More losers than winners in a century of future Southern Ocean seafloor warming, *Nat. Clim. Change*, 7, 749–755, 2017.
- Gurarie, E., Bengtson, J. L., Bester, M. N., Blix, A. S., Bornemann, H., Cameron, M., Nordøy, E. S., Plötz, J., Steinhage, D., and Boveng, P.: Distribution, density and abundance of Antarctic ice seals in Queen Maud Land and the eastern Weddell Sea, *Polar Biol.*, 40, 1149–1165, <https://doi.org/10.1007/s00300-016-2029-4>, 2017.
- Gutt, J. and Piepenburg, D.: Scale-dependent impact on diversity of Antarctic benthos caused by grounding of icebergs, *Mar. Ecol. Progr. Ser.*, 253, 77–83, 2003.
- Gutt, J., Barratt, I., Domack, E., d’Udekem d’Acoz, C., Dimmler, W., Grémare, A., Heilmayer, O., Isla, E., Janussen, D., Jorgensen, E., Kock, K.-H., Lehnert, L. S., López-González, P., Langner, S., Linse, K., Manjón-Cabeza, M. E., Meißner, M., Montiel, A., Raes, M., Robert, H., Rose, A., Sañé Schepisi, E., Saucède, T., Scheidat, M., Schenke, H.-W., Seiler, J., and Smith, C.: Biodiversity change after climate-induced ice-shelf collapse in the Antarctic, *Deep-Sea Res. Pt. II*, 58, 74–83, <https://doi.org/10.1016/j.dsr2.2010.05.024>, 2011.
- Gutt, J., Griffiths, H. J., and Jones, C. D.: Circum-polar overview and spatial heterogeneity of Antarctic macrobenthic communities, *Mar. Biodivers.*, 43, 481–487, <https://doi.org/10.1007/s12526-013-0152-9>, 2013a.
- Gutt, J., Böhmer, A., and Dimmler, W.: Antarctic sponge spicule mats shape macrobenthic diversity and act as a silicon trap, *Mar. Ecol. Progr. Ser.*, 480, 57–71, <https://doi.org/10.3354/meps10226>, 2013b.
- Gutt, J., Adams, B., Bracegirdle, T., Cowan, D., Cummings, V., di Prisco, G., Gradinger, R., Isla, E., McIntyre, T., Murphy, E., Peck, L., Schloss, I., Smith, C., Suckling, C., Takahashi, A., Verde, C., Wall, D. H., and Xavier, J.: Antarctic Thresholds – Ecosystem Resilience and Adaptation a new SCAR-Biology Programme, *Polarforsch.*, 82, 147–150, 2013c.
- Gutt, J., Bertler, N., Bracegirdle, T. J., Buschmann, A., Comiso, J., Hosie, G., Isla, E., Schloss, I. R., Smith, C. R., Tournadre, J., and Xavier, J. C.: The Southern Ocean ecosystem under multiple climate stresses – an integrated circumpolar assessment, *Glob. Chang. Biol.*, 21, 1434–1453, <https://doi.org/10.1111/geb.12794>, 2015.
- Gutt, J., Isla, E., Bertler, N., Bodeker, G. E., Bracegirdle, T. J., Cavanagh, R. D., Comiso, J. C., Convey, P., Cummings, V., De Conto, R., DeMaster, D., di Prisco, G., d’Ovidio, F., Griffiths, H. J., Khan, A. L., López-Martínez, J., Murray, A. E., Nielsen, U. N., Ott, S., Post, A., Ropert-Coudert, Y., Saucède, T., Schererm R., Schiaparelli, S., Schloss, I. R., Smith, C. R., Stefels, J., Stevens, C., Strugnell, J. M., Trimbom, S., Verde, C., Verleyen, E., Wall, D. H., Wilson, N. G., and Xavier, J. C.: Cross-disciplinarity in the advance of Antarctic ecosystem research, *Mar. Genom.*, 37, 1–17, <https://doi.org/10.1016/j.margen.2017.09.0062017>, 2018.
- Gutt, J. and Dieckmann, G.: The Southern Ocean: an extreme environment or just home of unique ecosystems?, in: *Life in extreme environments – Insights in biological capability*, Ecological Reviews, edited by: di Prisco, G., Edwards, H., Elster, J., and Huiskes, A., Cambridge Univer-

- sity Press, Cambridge, 218–233, ISBN 978-1-108-72420-3, <https://doi.org/10.1017/9781108683319>, 2021.
- Gutt, J., Isla, E., Xavier, J. C., Adams, B. J., Ahn, I.-Y., Cheng, C.-H.H., Coles, C., Cummings, V. J., di Prisco, G., Griffiths, H., Hawes, I., Hogg, I., McIntyre, T., Meiners, K. M., Pearce, D. A., Peck, L., Piepenburg, D., Reisinger, R. R., Saba, G. K., Schloss, I. R., Signori, C. N., Smith, C. R., Vacchi, M., Verde, C., and Wall, D. H.: Antarctic ecosystems in transition – life between stresses and opportunities, *Biol. Rev.*, 96, 798–821, <https://doi.org/10.1111/brv.12679>, 2021.
- Haas, C., Langhorne, P. J., Rack, W., Leonard, G. H., Brett, G. M., Price, D., Beckers, J. F., and Gough, A. J.: Airborne mapping of the sub-ice platelet layer under fast ice in McMurdo Sound, Antarctica, *The Cryosphere*, 15, 247–264, <https://doi.org/10.5194/tc-15-247-2021>, 2021.
- Hancock, A. M., King, C. K., Stark, J. S., McMinn, A., and Davidson, A. T.: Effects of ocean acidification on Antarctic marine organisms: A meta-analysis, *Ecol. Evol.*, 10, 4495–4514, <https://doi.org/10.1002/ece3.6205>, 2020.
- Hattermann, T., Nøst, O. A., Lilly, J. M., and Smedsrud, L. H.: Two years of oceanic observations below the Fimbul Ice Shelf, Antarctica, *Geophys. Res. Lett.* 39, L12605, <https://doi.org/10.1029/2012GL051012>, 2012.
- Hattermann, T., Smedsrud, L. H., Nøst, O. A., Lilly, J. M., and Galton-Fenzi, B. K.: Eddy-resolving simulations of the Fimbul Ice Shelf cavity circulation: Basal melting and exchange with open ocean, *Ocean Model*, 82, 28–44, <https://doi.org/10.1016/j.ocemod.2014.07.004>, 2014.
- Hattermann, T.: Antarctic thermocline dynamics along a narrow shelf with easterly winds, *J. Phys. Oceanogr.*, 48, 2419–2443, <https://doi.org/10.1175/JPO-D-18-0064.1>, 2018.
- Hattermann, T., Smedsrud, L. H., Nøst, O. A., Lilly, J. M., and Galton-Fenzi, B. K.: Eddy-resolving simulations of the Fimbul Ice Shelf cavity circulation: Basal melting and exchange with open ocean, *Ocean Model*, 82, 28–44, <https://doi.org/10.1016/j.ocemod.2014.07.004>, 2014.
- Hellmer, H. H., Kasuker, F., Timmermann, R., Deternmann, J., and Rae, J.: Twenty-first-century warming of a large Antarctic ice-shelf cavity by a redirected coastal current, *Nature*, 485, 225–228, <https://doi.org/10.1038/nature11064>, 2012.
- Hempel, G. (Ed.): Weddell Sea Ecology, Results of EPOS European “Polarstern” Study, Springer-Verlag, Berlin, ISBN 103642775977, 1993.
- Herranz-Borreguero, L., Lannuzel D., van der Merwe P., Treverrow A., and Pedro, J. B.: Large flux of iron from the Amery Ice Shelf marine ice to Prydz Bay, East Antarctica, *J. Geophys. Res.-Oceans*, 121, 6009–6020, <https://doi.org/10.1002/2016JC011687>, 2016.
- Heywood, K. J., Locarnini, R. A., Frew, R. D., Dennis, P. F., and King, B. A.: Transport and water masses of the Antarctic Slope Front system in the eastern Weddell Sea, *Ocean, ice and atmosphere: interactions at the Antarctic continental margin*, edited by: Jacobs, S. S and Weiss, R. F., *Antarct. Res. Ser.*, 75, American Geophysical Union, 203–214, 1998.
- Hill, S. L., Atkinson, A., Pakhomov, E. A., and Siegel, V.: Evidence for a decline in the population density of Antarctic krill *Euphausia superba* still stands, A comment on Cox et al., *J. Crustac. Biol.*, 39, 316–322, <https://doi.org/10.1093/jcobiol/ruz004>, 2019.
- Hindell, M. A., Reisinger, R. R., Ropert-Coudert, Y., Hückstädt, L. A., Trathan, P. N., Bornemann, H., Charrassin, J.-B., Costa, D. P., Danis, B., Lea, M.-A., Thompson, D., Torres, L. G., Van de Putte, A. P., Ainley, D. G., Alderman, R., Andrews-Goff, V., Arthur, B., Ballard, G., Bengtson, J., Bester, M. N., Boehme, L., Bost, C.-A., Boveng, P., Cleeland, J., Constantine, R., Crawford, R. J. M., Dalla Rosa, L., de Bruyn, P. J. N., Delord, K., Descamps, S., Double, M., Dugger, K., Emmerson, L., Fedak, M., Friedlaender, A., Gales, N., Goebel, M., Goetz, K. T., Guine, C., Goldsworthy, S. D., Harcourt, R., Hinke, J., Jerosch, K., Kato, A., Kerry, K. R., Kirkwood, R., Kooyman, G. L., Kovacs, K. M., Lawton, K., Lowther, A., Lydersen, C., Lyver, P., Makhado, A. B., Márquez, M. E. I., McDonald, B., McMahon, C., Muelbert, M., Nachtsheim, D., Nicholls, K., Nordøy, E. S., Olmastroni, S., Phillips, R. A., Pistorius, P., Plötz, J., Pütz, K., Ratcliffe, N., Ryan, P. G., Santos, M., Blix, A. S., Southwell, C., Staniland, I., Takahashi, A., Tarrow, A., Trivelpiece, W., Weimerskirch, H., Wienecke, B., Wotherspoon, S., Jonsen, I. D., and Raymond, B.: Tracking of marine predators to protect Southern Ocean ecosystems, *Nature*, 580, 87–92, <https://doi.org/10.1038/s41586-020-2126-y>, 2020.
- Hoegh-Guldberg, O. and Bruno, J. F.: The impact of climate change on the world’s marine ecosystems, *Science*, 328, 1523–1528, <https://doi.org/10.1126/science.1189930>, 2010.
- Hoppema, M.: Weddell Sea turned from source to sink for atmospheric CO₂ between pre-industrial time and present, *Glob. Planet. Change*, 40, 219–231, <https://doi.org/10.1016/j.gloplacha.2003.08.001>, 2004.
- Hoppema, M., Bakker, K., van Heuven, S. M. A. C., van Ooijen, J. C., and de Baar, H. J. W.: Distributions, trends and inter-annual variability of nutrients along a repeat section through the Weddell Sea (1996–2011), *Mar. Chem.*, 177, 545–553, <https://doi.org/10.1007/s10236-018-1131-2>, 2015.
- Houstin, A., Zitterbart, D. P., Heerah, K., Eisen, O., Planas-Bielsa, V., Fabry, B., and Le Bohec, C.: Juvenile emperor penguin range calls for extended conservation measures in the Southern Ocean, *bioRxiv*, preprint: <https://doi.org/10.1101/2021.04.06.438390>, 2021.
- Houstin, A., Zitterbart, D. P., Winterl, A., Richter, S., Planas-Bielsa, V., Chevallier, D., Ancel, A., Fournier, J., Fabry, B., and Le Bohec, C.: Biologging of emperor penguins – Attachment techniques and associated deployment performance, *PLOS ONE*, 17, e0265849, <https://doi.org/10.1371/journal.pone.0265849>, 2022.
- IPCC: Climate Change 2021: The Physical Science Basis, in: Contribution of Working Group I to the Sixth Assessment Report of the Intergovernmental Panel on Climate Change, edited by: Masson-Delmotte, V., Zhai, P., Pirani, A., Connors, S. L., Péan, C., Berger, S., Caud, N., Chen, Y., Goldfarb, L., Gomis, M. I., Huang, M., Leitzell, K., Lonnoy, E., Matthews, J. B. R., Maycock, T. K., Waterfield, T., Yelekçi, O., Yu, R., and Zhou, B., Cambridge University Press, <https://www.ipcc.ch/report/ar6/wg1/about/how-to-cite-this-report/> (last access: 21 November 2022), in press., 2021.
- IPCC, 2022: Climate Change 2022: Impacts, Adaptation, and Vulnerability, in: Contribution of Working Group II to the Sixth Assessment Report of the Intergovernmental Panel on Climate Change, edited by: Pörtner, H.-O., Roberts, D. C., Tignor, M., Poloczanska, E. S., Mintenbeck, K., Alegría, A., Craig, M., Langsdorf, S., Löschke, S., Möller, V., Okem, A., and Rama, B., Cambridge University Press, <https://report.ipcc.ch/ar6/wg2/>

- IPCC_AR6_WGII_FullReport.pdf, last access: 22 November 2022.
- Isla, E., Gerdes, D., Palanques, A., Teixidó, N., Arntz, W., and Puig, P.: Relationships between Antarctic coastal and deep-sea particle fluxes: implications for the deep-sea benthos, *Polar Biol.*, 29, 249, <https://doi.org/10.1007/s00300-005-0046-9>, 2006.
- Isla, E., Gerdes, D., Palanques, A., and Arntz, W. E.: Downward particle fluxes, wind and a phytoplankton bloom over a polar continental shelf: a stormy impulse for the biological pump, *Mar. Geol.*, 259, 59–72, <https://doi.org/10.1016/j.margeo.2008.12.011>, 2009.
- Isla, E. and Gerdes, D.: Ongoing ocean warming threatens the rich and diverse microbenthic communities of the Antarctic continental shelf, *Prog. Oceanogr.*, 178, 102180, <https://doi.org/10.1038/s41467-020-16093-z>, 2019.
- Jackson, K., Wilkinson, J., Maksym, T., Meldrum, D., Beckers, J., Haas, C., and MacKenzie, D.: A novel and low cost sea ice mass balance buoy, *J. Atmos. Ocean. Tech.*, 30, 2676–2688, <https://doi.org/10.1175/JTECH-D-13-00058.1>, 2013.
- Janssen, A. R., Badhe, R., Bransome, N. C., Bricher, P., Cavanagh, R., de Bruin, T., Elshout, P., Grant, S., Griffin, E., Grilly, E., Henley, S. F., Hofmann, E. E., Johnston, N. M., Karentz, D., Kent, R., Lynnes, A., Martin, T., Miloslavich, P., Murphy, E., Nolan, J. E., Sikes, E., Sparrow, M., Tacoma, M., Williams, M. J. M., Arata, J. A., Bowman, J., Corney, S., Lau, S. C. Y., Manno, C., Mohan, R., Nielsen, H., van Leeuwe, M. A., Waller, C., Xavier, J. C., and Van de Putte, A. P.: Southern Ocean Action Plan (2021–2030) in support of the United Nations Decade of Ocean Science for Sustainable Development, 69 pp., <https://doi.org/10.5281/zenodo.6412191>, 2022.
- Jones, E. M., Fenton, M., Meredith, M. P., Clargob, N. M., Ossebaar, S., Ducklow, H. W., Venables, H. J., and de Baar, H. J. W.: Ocean acidification and calcium carbonate saturation states in the coastal zone of the West Antarctic Peninsula, *Deep Sea Res. Pt. II*, 139, 181–194, <https://doi.org/10.1016/j.dsr2.2017.01.007>, 2017.
- Jullion, L., Naveira Garabato, A. C., Meredith, M. P., Holland, P. R., Courtis, P., and King, B. A.: Decadal freshening of the Antarctic Bottom Water exported from the Weddell Sea, *J. Climate*, 26, 8111–8125, <https://doi.org/10.1175/JCLI-D-12-00765.1>, 2013.
- Jullion, L., Naveira Garabato, A. C., Bacon, S., Meredith, M. P., Brown, P. J., Torres-Valdes, S., Speer, K. G., Holland, P. R., Dong, J., Bakker, D., Hoppema, M., Loose, B., Venables, H. J., Jenkins, W. J., Messias, M.-J., and Fahrbach, E.: The contribution of the Weddell Gyre to the lower limb of the global overturning circulation, *J. Geophys. Res.-Oceans*, 119, 3357–3377, <https://doi.org/10.1002/2013JC009725>, 2014.
- Jurasinski, G. and Beierkuhnlein, C.: Spatial patterns of biodiversity-assessing vegetation using hexagonal grids, *Biol. Environ.*, 106, 401–411, 2006.
- Jutila, A., King, J., Paden, J., Ricker, R., Hendricks, S., Polashenski, C., Helm, V., Binder, T., and Haas, C.: High-resolution snow depth on arctic sea ice from low-altitude airborne microwave radar data, *IEEE T. Geosci. Remote*, 60, 4300716, <https://doi.org/10.1109/TGRS.2021.3063756>, 2022.
- Kauko, H. M., Hattermann, T., Ryan-Keogh, T., Singh, A., de Steur, L., Fransson, A., Chierici, M., Falkenhaus, T., Hallfredsson, E. H., Bratbak, G., Tsagaraki, T., Berge, T., Zhou, Q., and Moreau, S.: Phenology and environmental control of phytoplankton blooms in the Kong Håkon VII Hav in the Southern Ocean, *Front. Mar. Sci.*, 8, 623856, <https://doi.org/10.3389/fmars.2021.623856>, 2021.
- Kennicutt II, M. C., Chown, S. L., Cassano, J. J., Liggett, D., Peck, L. S., Massom, R., Rintoul, S. R., Storey, J., Vaughan, D. G., Wilson, T. J., Allison, I., Ayton, J., Badhe, R., Baeseman, J., Barrett, P. J., Bell, R. E., Bertler, N., Bo, S., Brandt, A., Bromwich, D., Cary, S. C., Clark, M. S., Convey, P., Costa, E. S., Cowan, D., DeConto, R., Dunbar, R., Elfring, C., Escutia, C., Francis, J., Fricker, H. A., Fukuchi, M., Gilbert, N., Gutt, J., Havermans, C., Hik, D., Hosie, G., Jones, C., Kim, Y. D., Le Mahon, Y., Lee, S. H., Leppe, M., Leychenkov, G., Li, X., Lipenkov, V., Lochte, K., López-Martínez, J., Lüdecke, C., Lyons, W., Marensi, S., Miller, H., Morozova, P., Naish, T., Nayak, S., Ravindra, R., Retamales, J., Ricci, C. A., Rogan-Finnemore, M., Ropert-Coudert, Y., Samah, A. A., Sanson, L., Scambos, T., Schloss, I. R., Shiraiishi, K., Siegert, M. J., Simões, J. C., Storey, B., Sparrow, M. D., Wall, D. H., Walsh, J. C., Wilson, G., Winther, J. G., Xavier, J. C., Yang, H., and Sutherland, W. J.: A roadmap for Antarctic and Southern Ocean science for the next two decades and beyond, *Antarct. Sci.*, 27, 3–18, <https://doi.org/10.1017/S0954102014000674>, 2014.
- Kennicutt II, M. C., Bromwich, D., Liggett, D., Njåstad, B., Peck, L., Rintoul, S. R., Ritz, C., Siegert, M. J., Aitken, A., Brooks, C. M., Cassano, J., Chaturvedi, S., Chen, D., Dodds, K., Gollidge, N. R., Le Bohec, C., Leppe, M., Murray, A., Nath, P. C., Raphael, M. N., Rogan-Finnemore, M., Schroeder, D. M., Talley, L., Travouillon, T., Vaughan, D. G., Wang, L., Weatherwax, A. T., Yang, H., and Chown, S. L.: Sustained Antarctic Research: A 21st Century Imperative, *One Earth*, 1, 95–113, <https://doi.org/10.1016/j.oneear.2019.08.014>, 2019.
- Kim, S., Hammerstrom, K., and Dayton, P.: Epifauna community response to iceberg-mediated environmental change in McMurdo Sound, *Antarctica Mar. Ecol. Prog. Ser.*, 613, 1–14, <https://doi.org/10.3354/meps12899>, 2019.
- Kohlbach, D., Graeve, M., Lange, B. A., David, C., Schaafsma, F. L., van Franeker, J. A., Vortkamp, M., Brandt, A., and Flores, H.: Dependency of Antarctic zooplankton species on ice algae-produced carbon suggests a sea ice-driven pelagic ecosystem during winter, *Glob. Change Biol.*, 24, 4667–4681, <https://doi.org/10.1111/gcb.14392>, 2018.
- Krüger, L., Ramos, J. A., Xavier, J. C., Grémillet, D., González-Solís, J., Petry, M. V., Phillips, R. A., Wanless, R. M., and Paiva, V. H.: Projected distributions of Southern Ocean albatrosses, petrels and fisheries as a consequence of climatic change, *Ecography*, 41, 195–208, <https://doi.org/10.1111/ecog.02590>, 2018.
- Kusahara, K. and Hasumi, H.: Modeling Antarctic ice shelf responses to future climate changes and impacts on the ocean, *J. Geophys. Res.-Oceans*, 118, 2454–2475, <https://doi.org/10.1002/jgrc.20166>, 2013.
- Labrousse, S., Fraser, A. D., Sumner, M., Tamura, T., Pinaud, D., Wiennecke, B., Kirkwood, R., Ropert-Coudert, Y., Reisinger, R., Jonsen, I., Porter-Smith, R., Barbraud, C., Bost, C., Ji, R., and Jenouvrier, S.: Dynamic fine-scale sea icescape shapes adult emperor penguin foraging habitat in east Antarctica, *Geophys. Res. Lett.*, 46, 11206–11218, <https://doi.org/10.1029/2019GL084347>, 2019.
- Lai, C.-Z., DeGrandpre, M. D., and Darlington, R. C.: Autonomous optofluidic chemical analyzers for marine applica-

- tions: insights from the submersible autonomous moored instruments (SAM) for pH and $p\text{CO}_2$, *Front. Mar. Sci.*, 4, 438, <https://doi.org/10.3389/fmars.2017.00438>, 2018.
- Lancaster, L. T., Dudaniec, R. Y., Chauhan, P., Wellenreuther, M., Svensson, E. I., and Hansson, B.: Gene expression under thermal stress varies across a geographical range expansion front, *Mol. Ecol.*, 25, 1141–1156, <https://doi.org/10.1111/mec.13548>, 2016.
- LaRue, M., Salas, L., Nur, N., Ainley, D., Stammerjohn, S., Pennycook, J., Dozier, M., Saints, J., Stamatiou, K., Barrington, L., and Rotella, J.: Insights from the first global population estimate of Weddell seals in Antarctica, *Sci. Adv.*, 7, eabh3674, <https://doi.org/10.1126/sciadv.abh3674>, 2021.
- Laufkötter, C., Vogt, M., Gruber, N., Aumont, O., Bopp, L., Doney, S. C., Dunne, J. P., Hauck, J., John, J. G., Lima, I. D., Serfian, R., and Völker, C.: Projected decreases in future marine export production: the role of the carbon flux through the upper ocean ecosystem, *Biogeosciences*, 13, 4023–4047, <https://doi.org/10.5194/bg-13-4023-2016>, 2016.
- Lavergne, T., Sørensen, A. M., Kern, S., Tonboe, R., Notz, D., Aaboe, S., Bell, L., Dybkjær, G., Eastwood, S., Gabarro, C., Heygster, G., Killie, M. A., Brandt Kreiner, M., Lavelle, J., Saldo, R., Sandven, S., and Pedersen, L. T.: Version 2 of the EUMETSAT OSI SAF and ESA CCI sea-ice concentration climate data records, *The Cryosphere*, 13, 49–78, <https://doi.org/10.5194/tc-13-49-2019>, 2019.
- Lavergne, T., Kern, S., Aaboe, S., Derby, L., Dybkjær, G., Garric, G., Heil, P., Hendricks, S., Holfort, J., Howell, S., Key, J., Lieser, J. L., Maksym, T., Maslowski, W., Meier, W., Munoz-Sabater, J., Nicolas, J., Özsoy, B., Rabe, B., Rack, W., Raphael, M., de Rosnay, P., Smolyanitsky, V., Tietsche, S., Ukita, J., Vichi, M., Wagner, P., Willmes, S., and Zhao, X.: A New Structure for the Sea Ice Essential Climate Variables of the Global Climate Observing System, *B. Am. Meteorol. Soc.*, 103, 1502–1521, <https://doi.org/10.1175/BAMS-D-21-0227.1>, 2022.
- Le Paih, N., Hattermann, T., Boebel, O., Kanzow, T., Lüpkes, C., Rohardt, G., Strass, V., and Herbette, S.: Coherent seasonal acceleration of the Weddell Sea boundary current system driven by upstream winds, *J. Geophys. Res.-Oceans*, 125, e2020JC016316, <https://doi.org/10.1029/2020JC016316>, 2020.
- Lenton, A., Tilbrook, B., Law, R. M., Bakker, D., Doney, S. C., Gruber, N., Ishii, M., Hoppema, M., Lovenduski, N. S., Matear, R. J., McNeil, B. I., Metzl, N., Mikaloff Fletcher, S. E., Monteiro, P. M. S., Rödenbeck, C., Sweeney, C., and Takahashi, T.: Sea-air CO_2 fluxes in the Southern Ocean for the period 1990–2009, *Biogeosciences*, 10, 4037–4054, <https://doi.org/10.5194/bg-10-4037-2013>, 2013.
- Lin, D., Crabtree, J., Dillo, I., Downs, R. R., Edmunds, R., Giaretta, D., De Giusti, M., L'Hours, H., Hugo, W., Jenkyns, R., Khodiyar, V., Martone, M. E., Mokrane, M., Navale, V., Petters, J., Sierman, B., Sokolova, D. V., Stockhouse, M., and Westbrook, J.: The TRUST Principles for digital repositories, *Sci. Data*, 7, 144, <https://doi.org/10.1038/s41597-020-0486-7>, 2020.
- Lin, Y., Moreno, C., Marchetti, A., Ducklow, H., Schofield, O., Delage, E., Meredith, M., Li, Z., Eveillard, D., Chaffron, S., and Cassar, N.: Decline in plankton diversity and carbon flux with reduced sea ice extent along the Western Antarctic Peninsula, *Nat. Commun.*, 12, 4948, <https://doi.org/10.1038/s41467-021-25235-w>, 2021.
- Liu, X. and Millero, F. J.: The solubility of iron in seawater, *Mar. Chem.* 77, 43–54, [https://doi.org/10.1016/S0304-4203\(01\)00074-3](https://doi.org/10.1016/S0304-4203(01)00074-3), 2002.
- Lowther, A., von Quillfeldt, C., Assmy, P., De Steur, L., Deschamps, S., Divine, D., Elvevold, S., Forwick, M., Fransson, A., Fraser, A., Gerland, S., Granskog, M., Hallanger, I., Hattermann, T., Itkin, M., Hop., H., Husum, K., Kovacs, K., Lydersen, C., Matsuoka, K., Miettinen, A., Moholdt, G., Moreau, S., Myhre, P. I., Orme, L., Pavlova, O., and Tandberg, A. H.: A review of the scientific knowledge of the seascape off Dronning Maud Land, Antarctica, *Polar Biol.*, 45, 1313–1349, <https://doi.org/10.1007/s00300-022-03059-8>, 2022.
- MacGilchrist, G. A., Naveira Garabato, A. C., Brown, P. J., Jullion, L., Bacon, S., Bakker, D. C. E., Hoppema, M., Meredith, M. P., and Torres-Valdés, S.: Reframing the carbon cycle of the subpolar Southern Ocean, *Sci. Adv.*, 5, eaav6410, <https://doi.org/10.1126/sciadv.aav6410>, 2019.
- Malpress, V., Bestley, S., Corney, S., Welsford, D., Labrousse, S., Sumner, M., and Hindell, M.: Bio-physical characterisation of polynyas as a key foraging habitat for juvenile male southern elephant seals (*Mirounga leonina*) in Prydz Bay, East Antarctica, *PLOS ONE*, 12, e0184536, <https://doi.org/10.1371/journal.pone.0184536>, 2017.
- Matsuoka, K., Hindmarsh, R. C. A., Moholdt, G., Bentley, M. J., Pritchard, H. D., Brown, J., Conway, H., Drews, R., Durand, G., Goldberg, D., Hattermann, T., Kingslake, J., Lenaerts, J. T. M., Martín, C., Mulvaney, R., Nicholls, K. W., Pattyn, F., Ross, N. L., Scambos, T., and Whitehouse, P. L.: Antarctic ice rises and rumples: Their properties and significance for ice-sheet dynamics and evolution, *Earth-Sci. Rev.*, 150, 724–745, <https://doi.org/10.1016/j.earscirev.2015.09.004>, 2015.
- McGillicuddy, D. J., Sedwick, P. N., Dinniman, M. S., Arrigo, K. R., Bibby, T. S., Greenan, B. J. W., Hofmann, E. E., Klinck, J. M., Smith, W. O., Mack, S. L., Marsay, C. M., Sohst, B. M., and van Dijken, G. L.: Iron supply and demand in an Antarctic shelf ecosystem, *Geophys. Res. Lett.*, 42, 8088–8097, <https://doi.org/10.1002/2015GL065727>, 2015.
- McIntyre, T., Bornemann, H., Plötz, J., Tosh, C. A., and Bester, M. N.: Deep divers in even deeper seas: habitat use of male southern elephant seals from Marion Island, *Ant. Sci.*, 24, 561–570, <https://doi.org/10.1017/S0954102012000570>, 2012.
- Meiners, K. M., Vancoppenolle, M., Carnat, G., Castellani, G., Delille, B., Delille, D., Dieckmann, G. S., Flores, H., Fripiat, F., Grotti, M., Lange, B. A., Lannuzel, D., Martin, A., McMinn, A., Nomura, D., Peeken, I., Rivaro, P., Ryan, K. G., Stefels, J., Swadling, K. M., Thomas, D. N., Tison, J.-L., van der Merwe, P., van Leeuwe, M. A., Weldrick, C., and Yang, E. J.: chlorophyll *a* in Antarctic land fast sea ice: A first synthesis of historical ice core data, *J. Geophys. Res.-Oceans*, 123, 8444–8459, <https://doi.org/10.1029/2018JC014245>, 2018.
- Menze, S., Zitterbart, D. P., van Opzeeland, I., and Boebel, O.: The influence of sea ice, wind speed and marine mammals on Southern Ocean ambient sound, *R. Soc. Open Sci.*, 4, 160370, <https://doi.org/10.1098/rsos.160370>, 2017.
- Meredith, M., Sommerkorn, M., Cassotta, S., Derksen, C., Ekaykin, A., Hollowed, A., Kofinas, G., Mackintosh, A., Melbourne-Thomas, J., Muelbert, M. M. C., Ottersen, G., Pritchard, H., and Schuur, E. A. G.: Polar Regions, in: IPCC Special Report on the Ocean and Cryosphere in a Changing Climate, edited by: Pört-

- ner, H.-O., Roberts, D. C., Masson-Delmotte, V., Zhai, P., Tignor, M., Poloczanska, E., Mintenbeck, K., Alegria, A., Nicolai, M., Okem, A., Petzold, J., Rama, B., and Weyer, N. M., Cambridge University Press, Cambridge, UK and New York, NY, USA, 203–320. <https://doi.org/10.1017/9781009157964.005>, 2019.
- Meyer, B., Freier, U., Grimm, V., Groeneveld, J., Hunt, B. P., Kerwath, S., King, R., Klaas, C., Pakhomov, E., Meiners, K. M., Melbourne-Thomas, J., Murphy, E. J., Thorpe, S. E., Stammerjohn, S., Wolf-Gladrow, D., Auerswald, L., Götz, A., Halbach, L., Jarman, S., Kawaguchi, S., Krumpfen, T., Nehrke, G., Ricker, R., Sumner, M., Teschke, M., Trebilco, R., and Yilmaz, N. I.: The winter pack-ice zone provides a sheltered but food-poor habitat for larval Antarctic krill, *Nat. Ecol. Evol.*, 1, 1853–1861, <https://doi.org/10.1038/s41559-017-0368-3>, 2017.
- Miller, L. A., Fripiat, F., Else, B. G. T., Bowman, J. S., Brown, K. A., Collins, R. E., Ewert, M., Fransson, Gosselin, M., Lannuzel, D., Meiners, K. M., Christine Michel, C., Nishioka, J., Nomura, D., Papadimitriou, S., Russell, L. M., Sørensen, L. L., Thomas, D. N., Tison, J.-L., van Leeuwe, M. A., Vancoppenolle, M., Wolff, E. W., and Zhou, J.: Methods for biogeochemical studies of sea ice: The state of the art, caveats, and recommendations, *Elementa*, 3, 000038, <https://doi.org/10.12952/journal.elementa.000038>, 2015.
- Moline, M. A., Claustre, H., Frazer, T. K., Schofield, O., and Vernet, M.: Alteration of the food web along the Antarctic Peninsula in response to a regional warming trend, *Glob. Chang. Biol.*, 10, 1973–1980, <https://doi.org/10.1111/j.1365-2486.2004.00825.x>, 2004.
- Montes-Hugo, M., Doney, S. C., Ducklow, H. W., Fraser, W., Martinson, D., Stammerjohn, S. E., and Schofield, O.: Recent changes in phytoplankton communities associated with rapid regional climate change along the western Antarctic Peninsula, *Science*, 323, 1470–1473, <https://doi.org/10.1126/science.1164533>, 2009.
- Monti-Birkenmeier, M., Diociaiuti, T., Umani, S. F., and Meyer, B.: Microzooplankton composition in the winter sea ice of the Weddell Sea, *Antarct. Sci.*, 29, 299–310, <https://doi.org/10.1017/S0954102016000717>, 2017.
- Moore, S. E. and Grebmeier, J. M.: The Distributed Biological Observatory: Linking Physics to Biology in the Pacific Arctic Region, *Arctic*, 71, 1–7, 2018.
- Morley, S. A., Abele, D., Barnes, D. K. A., Cárdenas, C. A., Cotté, C., Gutt, J., Henley, S. F., Höfer, K. A. J., Hughes, K. A., Martin, S. M., Moffat, C., Raphael, M. N., Stammerjohn, S. E., Suckling, C. C., Tulloch, W. J. D., Waller, C. L., and Constable, A. J.: Global drivers on Southern Ocean ecosystems: changing physical environments and anthropogenic pressures in an Earth system, *Front. Mar. Sci.*, 7, 547188, <https://doi.org/10.3389/fmars.2020.547188>, 2020.
- Nachtsheim, D. A., Ryan, S., Schröder, M., Jensen, L., Oosthuizen, W. C., Bester, M. N., Hagen, W., and Bornemann, H.: Foraging behaviour of Weddell seals (*Leptonychotes weddellii*) in connection to oceanographic conditions in the southern Weddell Sea, *Prog. Oceanogr.*, 173, 165–179, <https://doi.org/10.1016/j.pocean.2019.02.013>, 2019.
- Naeem, S.: Chapter 4 Ecological consequences of declining biodiversity: a biodiversity–ecosystem function (BEF) framework for marine systems, in: *Marine Biodiversity and Ecosystem Functioning: Frameworks, methodologies, and integration*, edited by: Solan, M., Aspiden, R. J., and Pateron, D. M., Oxford University Press, Oxford, U.K., 34–51, <https://doi.org/10.1093/acprof:oso/9780199642250.001.0001>.
- Newman, L., Heil, P., Trebilco, R., Katsumata, K., Constable, A. J., van Wijk, E., Assmann, K., Beja, J., Bricher, P., Coleman, R., Costa, D., Diggs, S., Farneti, R., Fawcett, S., Gille, S. T., Hendry, K. R., Henley, S. F., Hofmann, E., Maksym, T., Mazloff, M., Meijers, A. J. S., Meredith, M. P., Moreau, S., Ozsoy, B., Robertson, R., Schloss, I. R., Schofield, O., Shi, J., Sikes, E. L., Smith, I. J., Swart, S., Wahlin, A., Williams, G., Williams, M. J. M., Herraiz-Borreguero, L., Kern, S., Lieser, J., Massom, R., Melbourne-Thomas, J., Miloslavich, P., and Spreen, G.: Delivering sustained, coordinated and integrated observations of the Southern Ocean for global impact, *Front. Mar. Sci.*, 6, 433, <https://doi.org/10.3389/fmars.2019.00433>, 2019.
- Nicholls, K. W., Østerhus, S., Makinson, K., Gammelsrød, T., and Fahrbach, E.: Ice-ocean processes over the continental shelf of the southern Weddell Sea, Antarctica: A review, *Rev. Geophys.*, 47, RG3003, <https://doi.org/10.1029/2007RG000250>, 2009.
- Nicolaus, M., Hoppmann, M., Arndt, S., Hendricks, S., Katlein, C., Nicolaus, A., Rossmann, L., Schiller, M. and Schwegmann, S.: Snow depth and air temperature seasonality on sea ice derived from snow buoy measurements, *Front. Mar. Sci.*, 8, 655446, <https://doi.org/10.3389/fmars.2021.655446>, 2021.
- Nightingale, A. M., Beaton, A. D., and Mowlem, M. C.: Trends in microfluidic systems for in situ chemical analysis of natural waters, *Sens. Act. B Chem.*, 221, 1398–1405, <https://doi.org/10.1016/j.snb.2015.07.091>, 2015.
- Nøst, O. A., Biuw, M., Tverberg, V., Lydersen, C., Hattermann, T., Zhou, Q., Smedsrud, L. H., and Kovacs, K. M.: Eddy overturning of the Antarctic Slope Front controls glacial melting in the Eastern Weddell Sea, *J. Geophys. Res.-Oceans*, 116, C11014, <https://doi.org/10.1029/2011JC006965>, 2011.
- Núñez-Riboni, I. and Fahrbach, E.: Seasonal variability of the Antarctic Coastal Current and its driving mechanisms in the Weddell Sea, *Deep-Sea Res. Pt. I*, 56, 1927–1941, <https://doi.org/10.1016/j.dsr.2009.06.005>, 2009.
- Oellermann, M., Strugnell, J., Lieb, B., and Mark, F. C.: Positive selection in octopus haemocyanin reveals functional links to temperature adaptation, *BMC Evol. Biol.*, 15, 133, <https://doi.org/10.1186/s12862-015-0411-4>, 2015.
- Oetting, A., Smith, E. C., Arndt, J. E., Dorschel, B., Drews, R., Ehlers, T. A., Gaedicke, C., Hofstede, C., Klages, J. P., Kuhn, G., Lambrecht, A., Läufer, A., Mayer, C., Tiedemann, R., Wilhelms, F., and Eisen, O.: Geomorphology and shallow sub-sea-floor structures underneath the Ekström Ice Shelf, Antarctica, *The Cryosphere*, 16, 2051–2066, <https://doi.org/10.5194/tc-16-2051-2022>, 2022.
- Okazaki, R. R., Sutton, A. J., Feely, R. A., Dickson, A. G., Alin, S. R., Sabine, C. L., Bunje, P. M. E., and Virmani, J. I.: Evaluation of marine pH sensors under controlled and natural conditions for the Wendy Schmidt Ocean Health XPRIZE, *Limnol. Oceanogr.-Meth.*, 15, 586–600, <https://doi.org/10.1002/lom3.10189>, 2017.
- Oosthuizen, W. C., Reisinger, R. R., Bester, M. N., Steinhage, D., Auel, H., Flores, H., Knust, R., Ryan, S., and Bornemann, H.: Habitat-based density models of pack ice seal distribution in the southern Weddell Sea, Antarctica, *Mar. Ecol. Prog. Ser.*, 673, 211–227, <https://doi.org/10.3354/meps13787>, 2021.

- Parkinson, C. L.: A 40-y record reveals gradual Antarctic sea ice increases followed by decreases at rates far exceeding the rates seen in the Arctic, *P. Natl. Acad. Sci. USA*, 116, 14414–14423, <https://doi.org/10.1073/pnas.1906556116>, 2019.
- Pausch, F., Koch, F., Hassler, C., Bracher, A., Bischof, K., and Trimborn, S.: Responses of a natural phytoplankton community from the Drake Passage to two predicted climate change scenarios, *Front. Mar. Sci.*, 9, 759501, <https://doi.org/10.3389/fmars.2022.759501>, 2022.
- Peck, L. S., Barnes, D. K. A., Cook, A. J., Fleming, A. H., and Clarke, A.: Negative feedback in the cold: Ice retreat produces new carbon sinks in Antarctica, *Glob. Change Biol.*, 16, 2614–2623. <https://doi.org/10.1111/j.1365-2486.2009.02071.x>, 2010.
- Pereira, H. M., Ferrier, S., Walters, M., Geller, G. N., Jongman, R. H. G., Scholes, R. J., Bruford, M. W., Brummitt, N., Butchart, S. H. M., ACardoso, A. C., Coops, N. C., Dulloo, E., Faith, D. P., Freyhof, J. R., Gregory, R. D., Heip, C., Höft, R., Hurtt, G., Jetz, W., Karp, D. S., McGeoch, M. A., Obura, D., Onoda, Y., Pettorelli, N., Reyers, B., Sayre, R., Scharlemann, J. P. M., Stuart, S. N., Turak, E., Walpole, M., and Wegmann, M.: Essential Biodiversity Variables, *Science*, 339, 277–278, <https://doi.org/10.1126/science.1229931>, 2013.
- Pertierra, L. R., Santos-Martin, F., Hughes, K. A., Avila, C., Caceres, C. O., De Filippo, D., Gonzalez, S., Grant, S. M., Lynch, H., Marina-Montes, C., Quesada, A., Tejedó, P., Tin, T., and Benayas, J.: Ecosystem services in Antarctica: Global assessment of the current state, future challenges and managing opportunities, *Ecosyst. Serv.*, 49, 101299, <https://doi.org/10.1016/j.ecoser.2021.101299>, 2021.
- Piazza, P., Cummings, V., Guzzi, A., Ian Hawes, Lohrer, A., Marini, S., Marriott, P., Menna, F., Nocerino, E., Peirano, A., Kim, S., and Schiaparelli, S.: Underwater photogrammetry in Antarctica: long-term observations in benthic ecosystems and legacy data rescue, *Polar Biol.*, 42, 1061–1079, <https://doi.org/10.1007/s00300-019-02480-w>, 2019.
- Pineda-Metz, S. E. A., Gerdes, D., and Richter, C.: Benthic fauna declined on a whitening Antarctic continental shelf, *Nat. Commun.*, 11, 2226, <https://doi.org/10.1038/s41467-020-16093-z>, 2020.
- Pinkerton, M. H., Boyd, P. W., Deppeler, S., Hayward, A., Höfer, J., and Moreau, S.: Evidence for the impact of climate change on primary producers in the Southern Ocean, *Front. Ecol. Evol.*, 9, 592027, <https://doi.org/10.3389/fevo.2021.592027>, 2021.
- Pörtner, H. O., Scholes, R. J., Agard, J., Archer, E., Arneeth, A., Bai, X., Barnes, D., Burrows, M., Chan, L., Cheung, W. L., Diamond, S., Donatti, C., Duarte, C., Eisenhauer, N., Foden, W., Gasalla, M. A., Handa, C., Hickler, T., Hoegh-Guldberg, O., Ichii, K., Jacob, U., Insarov, G., Kiessling, W., Leadley, P., Leemans, R., Levin, L., Lim, M., Maharaj, S., Managi, S., Marquet, P. A., McElwee, P., Midgley, G., Oberdorff, T., Obura, D., Osman, E., Pandit, R., Pascual, U., Pires, A. P. F., Popp, A., Reyes-García, V., Sankaran, M., Settele, J., Shin, Y. J., Sintayehu, D. W., Smith, P., Steiner, N., Strassburg, B., Sukumar, R., Trisos, C., Val, A. L., Wu, J., Aldrian, E., Parmesan, C., Pichs-Madruga, R., Roberts, D. C., Rogers, A. D., Díaz, S., Fischer, M., Hashimoto, S., Lavorel, S., Wu, N., and Ngo, H. T.: IPBES-IPCC co-sponsored workshop report on biodiversity and climate change, IPBES and IPCC, <https://doi.org/10.5281/zenodo.4782538>, 2021.
- Purser, A., Hehemann, L., Boehringer, L., Tippenhauer, S., Wege, M., Bornemann, H., Pineda-Metz, S. E. A., Flintrop, C. M., Koch, F., Hellmer, H. H., Burkhardt-Holm, P., Janout, M., Werner, E., Glemser, B., Balaguer, J., Rogge, A., Holtapfels, M., and Wenzhoefer, F.: A vast icefish breeding colony discovered in the Antarctic, *Curr. Biol.*, 32, 842–850, <https://doi.org/10.1016/j.cub.2021.12.022>, 2022.
- Rackow, T., Danilov, S., Goessling, H. F., Hellmer, H. H., Sein, D. V., Semmler, T., Sidorenko, D., and Jung, T.: Delayed Antarctic sea-ice decline in high-resolution climate change simulations, *Nat. Commun.*, 13, 637, <https://doi.org/10.1038/s41467-022-28259-y>, 2022.
- Raguá-Gil, J. M., Gutt, J., Clarke, A., and Arntz, W. E.: Antarctic shallow-water mega-epibenthos: shaped by circumpolar dispersion or local conditions?, *Mar. Biol.*, 144, 829–839, <https://doi.org/10.1007/s00227-003-1269-3>, 2004.
- Reisinger, R. R., Corney, S., Raymond, B., Lombard, A. T., Bester, M. N., Crawford, R. J. M., Davies, D., Bruyn, P. J. N., Dilley, B. J., Kirkman, S. P., Makhado, A. B., Ryan, P. G., Schoombie, S., Stevens, K. L., Tosh, C. A., Wege, M., Whitehead, T. O., Sumner, M. D., Wotherspoon, S., Friedlaender, A. S., Cotté, C., Hindell, M. A., Ropert-Coudert, Y., and Pistorius, P. A.: Habitat model forecasts suggest potential redistribution of marine predators in the southern Indian Ocean, *Divers. Distrib.*, 28, 142–159, <https://doi.org/10.1111/ddi.13447>, 2022a.
- Reisinger, R. R., Brooks, C. M., Raymond, B., Freer, J. J., Cotté, C., Xavier, J. C., Trathan, P. N., Bornemann, H., Charrassin, J. B., Costa, D. P., Danis, B., Hückstädt, L., Jonsen, I. D., Lea, M. A., Torres, L., Van de Putte, A., Wotherspoon, S., Friedlaender, A. S., Ropert-Coudert, Y., and Hindell, M.: Predator-derived bioregions in the Southern Ocean: Characteristics, drivers and representation in marine protected areas, *Biol. Conserv.*, 272, 109630, <https://doi.org/10.1016/j.biocon.2022.109630>, 2022b.
- Richter, S., Gerum, R., Schneider, W., Fabry, B., and Zitterbart, D. P.: A remote-controlled observatory for behavioural and ecological research: A case study on Emperor penguins, *Methods Ecol. Evol.* 9, 1–11, <https://doi.org/10.1111/2041-210X.12971>, 2018.
- Rintoul, S., Sparrow, M., Meredith, M., Wadley, V., Speer, K., Hofmann, E., Summerhayes, C., Urban, E., Bellerby, R., Ackley, S., Alverson, K., Ansoorge, I., Aoki, S., Azzolini, R., Beal, L., Belbeoch, M., Bergamasco, A., Biuw, M., Boehme, L., Budillon, G., Campos, L., Carlson, D., Cavanagh, R., Charpentier, E., Chul Shin, H., Coffin, M., Constable, A., Costa, D., Cronin, M., De Baar, H., De Broyer, C., De Bruin, T., De Santis, L., Butler, E., Dexter, P., Drinkwater, M., England, M., Fahrbach, E., Fanta, E., Fedak, M., Finney, K., Fischer, A., Frew, R., Garzoli, S., Gernandt, H., Gladyshev, S., Gomis, D., Gordon, A., Gunn, J., Gutt, J., Haas, C., Hall, J., Heywood, K., Hill, K., Hindell, M., Hood, M., Hoppema, M., Hosie, G., Howard, W., Joiris, C., Kaleschke, L., Kang, S., Kennicutt, M., Klepikov, A., Lembke-Jene, L., Lovenduski, N., Lytle, V., Mathieu, P., Moltmann, T., Morrow, R., Muelbert, M., Murphy, E., Naganobu, M., Naveira Garabato, A., Nicol, S., O'Farrell, S., Ott, N., Piola, A., Piotrowicz, S., Proctor, R., Qiao, F., Rack, F., Ravindra, R., Ridgway, K., Rignot, E., Ryabini, V., Sarukhanian, E., Sathyendranath, S., Schlosser, P., Schwarz, J., Smith, G., Smith, S., Southwell, C., Speich, S., Stambach, W., Stammer, D., Stansfield, K., Thiede, J., Thouvenot, E., Tilbrook, B., Wadhams, P., Wainer, I., Willmott Puig, V., Wijffels, S., Woodworth, P., Worby, T., and Wright, S.:

- The Southern Ocean observing system: Initial science and implementation strategy, SCAR and SCOR, ISBN 978-0-948277-27-6, 2012.
- Roca, I., Kaleschke, L., and Van Opzeeland, I.: Sea ice anomalies affect the acoustic presence of Antarctic pinnipeds in their breeding areas, *Front. Ecol. Environ.*, in press., 2022.
- Rogers, A. D., Frinault, B. A. V., Barnes, D. K. A., Bindoff, N. L., Downie, R., Ducklow, H. W., Friedlaender, A. S., Hart, T., Hill, S. L., Hofmann, E. E., Linse, K., McMahon, C. R., Murphy, E. J., Pakhomov, E. A., Reygondeau, G., Staniland, I. J., Wolf-Gladrow, D. A., and Wright, R. M.: Antarctic futures: An assessment of climate-driven changes in ecosystem structure, function, and service provisioning in the southern ocean, *Annu. Rev. Mar. Sci.*, 12, 87–120, <https://doi.org/10.1146/annurev-marine-010419-011028>, 2020.
- Ropert-Coudert, Y., Van de Putte, A., Reisinger, R., Bornemann, H., Charrassin, J.-B., Costa, D., Danis, B., Huckstadt, L., Jonsen, I., Lea, M.-A., Thompson, D., Torres, L., Trathan, P., Wotherpoon, S., Ainley, D., Alderman, R., Andrews-Goff, V., Arthur, B., Ballard, G., Bengtson, J., Bester, M., Blix, A. S., Boehme, L., Bost, C.-A., Boveng, P., Clelland, J., Constantine, R., Crawford, R., Dalla Rosa, L., de Bruyn, P. J. N., Delord, K., Descamps, S., Double, M. C., Emmerson, L., Fedak, M., Friedlaender, A., Gales, N., Goebel, M., Goetz, K., Guinet, C., Goldsworthy, S., Harcourt, R., Hinke, J., Jerosch, K., Kato, A., Kerry, K., Kirkwood, R., Kooyman, G., Kovacs, K., Lawton, K., Lowther, A., Lydersen, C., Lyver, P., Makhado, A., Márquez, M., McDonald, B., McMahon, C., Muelbert, M., Nachtsheim, D., Nicholls, K., Nordøy, E., Olmastroni, S., Phillips, R., Pistorius, P., Plötz, J., Pütz, K., Ratcliffe, N., Ryan, P., Santos, M., Southwell, C., Staniland, I., Takahashi, A., Tarroux, A., Trivelpiece, W., Wakefield, E., Weimerskirch, H., Wienecke, B., Xavier, J., Raymond, B., and Hindell, M.: The retrospective analysis of antarctic tracking data project, *Sci. Data*, 7, 1–11, <https://doi.org/10.1038/s41597-020-0406-x>, 2020.
- Sahade, R., Lager, C., Torre, L., Momo, F., Monien, P., Schloss, I., Barnes, D. K. A., Servetto, N., Tarantelli, S., Tatia, M., Zamboni, N., and Abele, D.: Climate change and glacier retreat drive shifts in an Antarctic benthic ecosystem, *Sci. Adv.*, 1, e1500050, <https://doi.org/10.1126/sciadv.1500050>, 2015.
- Sakamoto, C., M., Johnson, K. S., Coletti, L. J., and Jannasch, H. W.: Pressure correction for the computation of nitrate concentrations in seawater using an in situ ultraviolet spectrophotometer, *Limnol. Oceanogr.-Meth.*, 15, 897–902, <https://doi.org/10.1002/lom3.10209>, 2017.
- Sañe, E., Isla, E., Gerdes, D., Montiel, A., and Gili, J.-M.: Benthic macrofauna assemblages and biochemical properties of sediments in two Antarctic regions differently affected by climate change, *Cont. Shelf Res.*, 35, 53–63, <https://doi.org/10.1016/j.csr.2011.12.008>, 2012.
- Säring, F., Veit-Köhler, G., Seifert, D., Liskow, I., and Link, H.: Sea-ice-related environmental drivers affect meiofauna and macrofauna communities differently at large scales (Southern Ocean, Antarctic), *Mar. Ecol. Prog. Ser.*, 700, 13–37, <https://doi.org/10.3354/meps14188>, 2022.
- Schaafsma, F. L., Kohlbach, D., David, C., Lange, B. A., Graeve, M., Flores, H., and van Franeker, J. A.: Spatio-temporal variability in the winter diet of larval and juvenile Antarctic krill, *Euphausia superba*, in ice-covered waters, *Mar. Ecol. Prog. Ser.*, 580, 101–115, <https://doi.org/10.3354/meps12309>, 2017.
- Schall, E., Thomisch, K., Boebel, O., Gerlach, G., Woods, S. M., El-Gabbas, A., S., and Van Opzeeland, I.: Multi-year presence of humpback whales in the Atlantic sector of the Southern Ocean but not during El Niño, *Commun. Biol.*, 4, 790, <https://doi.org/10.1038/s42003-021-02332-6>, 2021.
- Schöning, T., Bergmann, M., Ontrup, J., Taylor, J., Dannheim, J., Gutt, J., Purser, A., and Nattkemper, T. W.: Semi-automated image analysis for the assessment of megafaunal densities at the Arctic deep-sea observatory Hausgarten, *PLOS ONE*, 7, e38179, <https://doi.org/10.1371/journal.pone0038179>, 2012.
- Seifert, M., Rost, B., Trimborn, S., and Hauck, J.: Meta-analysis of multiple driver effects on marine phytoplankton highlights modulating role of $p\text{CO}_2$, *Glob. Change Biol.*, 26, 6787–6804, <https://doi.org/10.1111/gcb.15341>, 2020.
- Simpson, R. D.: The “ecosystem service framework”: a critical assessment, in: *Valuation of Regulating Services of Ecosystems, Methodology and Applications* (1st ed.), edited by: Kumar, P. and Wood, M., Routledge, 40 et sqq., <https://doi.org/10.4324/9780203847602>, 2010.
- Smetsrud, L. H.: Warming of the deep water in the Weddell Sea along the Greenwich meridian: 1977–2001, *Deep-Sea Res.*, 52, 241–258, <https://doi.org/10.1016/j.dsr.2004.10.004>, 2005.
- Smith, E. C., Hattermann, T., Kuhn, G., Gaedicke, C., Berger, S., Drews, R., Ehlers, T. A., Franke, D., Gromig, R., Hofstede, C., Lambrecht, A., Läufer, A., Mayer, C., Tiedemann, R., Wilhelm, F., and Eisen, O.: Detailed seismic bathymetry beneath Ekström Ice Shelf, Antarctica: Implications for glacial history and ice-ocean interaction, *Geophys. Res. Lett.*, 47, e2019GL086187, <https://doi.org/10.1029/2019GL086187>, 2020.
- Smith, P., Arneft, A., Barnes, D. K. A., Ichii, K., Marquet, P. A., Popp, A., Pörtner, H. O., Rogers, A. D., Scholes, R. J., Strassburg, B., Wu, J., and Ngo, H.: How do we best synergize climate mitigation actions to co-benefit biodiversity?, *Glob. Change Biol.*, 28, 2555–2577, <https://doi.org/10.1111/gcb.16056>, 2022.
- Smith, R. C., Fraser, W. R., Stammerjohn, S. E., and Vernet, M.: Palmer Long-Term Ecological Research on the Antarctic Marine Ecosystem, in: *Antarctic Research Series*, edited by: Domack, E., Levente, A., Burnet, A., Bindschadler, R., Convey, P., and Kirby, M., American Geophysical Union, 131–144, <https://doi.org/10.1029/AR079p0131>, 2013.
- Somero, G. N.: The physiology of global change: linking patterns to mechanisms, *Annu. Rev. Mar. Sci.*, 4, 39–61, <https://doi.org/10.1146/annurev-marine-120710-100935>, 2012.
- Steiner, N., Bowman, J. Campbell, K.; Chierici, M., Eronen-Rasmus, E., Falardeau, M., Flores, H., Fransson, A., Herr, H., In-sley, S., Kauko, H., Lannuzel, D., Loseto, L., Lynnes, A., Majewski, A., Meiners, K., Miller, L., Michel, L., Moreau, S., Nacke, M., Nomura, D., Tedesco, L., van Franeker, J. A., van Leeuwe, M., and Wongpan, P.: Climate change impacts on sea-ice ecosystems and associated ecosystem services, *Elementa*, 9, 00007, <https://doi.org/10.1525/elementa.2021.00007>, 2021.
- Strass, V. H., Rohardt, G., Kanzow, T., Hoppema, M., and Boebel, O.: Multidecadal warming and density loss in the deep Weddell Sea, Antarctica, *J. Climate*, 33, 9863–9881, <https://doi.org/10.1175/JCLI-D-20-0271>, 2020.
- Strobel, A., Bennecke, S., Leo, E., Mintenbeck, K., Portner, H. O., and Mark, F. C.: Metabolic shifts in the Antarctic fish *Notothenia*

- rossii* in response to rising temperature and $p\text{CO}_2$, *Front. Zool.*, 9, 28, <https://doi.org/10.1186/1742-9994-9-28>, 2012.
- Sun, S., Hattermann, T., Pattyn, F., Nicholls, K. W., Drews, R., and Berger, S.: Topographic shelf waves control seasonal melting near Antarctic ice shelf grounding lines, *Geophys. Res. Lett.*, 46, 9824–9832, <https://doi.org/10.1029/2019GL083881>, 2019.
- Tagliabue, A. and Arrigo, K. R.: Decadal trends in air-sea CO_2 exchange in the Ross Sea (Antarctica), *Geophys. Res. Lett.*, 43, 5271–5278, <https://doi.org/10.1002/2016GL069071>, 2016.
- Teschke, K., Beaver, D., Bester, M. N., Bombosch, A., Bornemann, H., Brandt, A., Brtnik, P., de Broyer, C., Burkhardt, E., Dieckmann, G., Douglass, L., Flores, H., Gerdes, D., Griffiths, H. J., Gutt, J., Hain, S., Hauck, J., Hellmer, H., Herata, H., Hoppema, M., Isla, E., Jerosch, K., Kock, K.-H., Krause, R., Kuhn, G., Lemke, P., Liebschner, A., Linse, K., Miller, H., Mintenbeck, K., Nixdorf, U., Pehlke, H., Post, A., Schröder, M., Shust, K. V., Schwegmann, S., Siegel, V., Strass, V., Thomisch, K., Timmermann, R., Trathan, P. N., van de Putte, A., van Franeker, J., van Opzeeland, I. C., von Nordheim, H., and Brey, T.: Scientific background document in support of a CCAMLR MPA in the Weddell Sea (Antarctica) – Version 2016 – Part A: General context of the establishment of MPAs and background information on the Weddell Sea MPA planning area, WG-EMM-16/01, CCAMLR, Hobart, 112 pp., 2016.
- Teschke, K., Pehlke, H., Siegel, V., Bornemann, H., Knust, R., and Brey, T.: An integrated compilation of data sources for the development of a marine protected area in the Weddell Sea, *Earth Syst. Sci. Data*, 12, 1003–1023, <https://doi.org/10.5194/essd-12-1003-2020>, 2020a.
- Teschke, K., Brtnik, P., Hain, S., Herata, H., Liebschner, A., Pehlke, H., and Brey, T.: Planning marine protected areas under the CCAMLR regime – The case of the Weddell Sea (Antarctica), *Mar. Policy*, 124, 104370, <https://doi.org/10.1016/j.marpol.2020.104370>, 2020b.
- Thomisch, K., Boebel, O., Clark, C. W., Hagen, W., Spiesecke, S., Zitterbart, D. P., and Van Opzeeland, I.: Spatio-temporal patterns in acoustic presence and distribution of Antarctic blue whales *Balaenoptera musculus intermedia* in the Weddell Sea, *Endanger. Species Res.*, 30, 239–253, <https://doi.org/10.3354/esr00739>, 2016.
- Thompson, A. F., Stewart, A. L., Spence, P., and Heywood, K. J.: The Antarctic slope current in a changing climate, *Rev. Geophys.*, 56, 741–770, <https://doi.org/10.1029/2018RG000624>, 2018.
- Thompson, D. W. J., Solomon, S., Kushner, P. J., England, M. H., Grise, K. M., and Karoly, D. J.: Signatures of the Antarctic ozone hole in Southern Hemisphere surface climate change, *Nat. Geosci.*, 4, 741–749, <https://doi.org/10.1038/NNGEO1296>, 2011.
- Timmermann, R. and Goeller, S.: Response to Filchner–Ronne Ice Shelf cavity warming in a coupled ocean–ice sheet model – Part 1: The ocean perspective, *Ocean Sci.*, 13, 765–776, <https://doi.org/10.5194/os-13-765-2017>, 2017.
- Trimborn, S., Brenneis, T., Hoppe, C. J. M., Laglera, L. M., Norman, L., Santos-Echeandía, J., Völkner, C., Wolf-Gladrow, D., and Hassler, C. S.: Iron sources alter the response of Southern Ocean phytoplankton to ocean acidification, *Mar. Ecol. Prog. Ser.*, 578, 35–50, <https://doi.org/10.3354/meps12250>, 2017.
- Turner, J. and Comiso, J.: Solve Antarctica’s sea ice puzzle, *Nature*, 547, 275–277, <https://doi.org/10.1038/547275a>, 2017.
- Turner, J., Barrand, N. E., Bracegirdle, T. J., Convey, P., Hodgson, D., Jarvis, M., Jenkins, A., Marshall, G., Meredith, M. P., Roscoe, H., Shanklin, J., French, J., Goosse, H., Gutt, J., Jacobs, S., Kennicutt II, M. C., Masson-Delmotte, V., Mayewski, P., Navarro, F., Robinson, S., Scambos, T., Sparrow, M., Summerhayes, C., Speer, K., and Klepikov, A.: Antarctic climate change and the environment: an update, *Polar. Rec.*, 50, 237–259, <https://doi.org/10.1017/S0032247413000296>, 2014.
- Turner, J., Phillips, T., Marshall, G. J., Hosking, J. S., Pope, J. O., Bracegirdle, T. J., and Deb, P.: Unprecedented springtime retreat of Antarctic sea ice in 2016, *Geophys. Res. Lett.*, 44, 6868–6875, <https://doi.org/10.1002/2017GL073656>, 2017.
- Turner, J., Holmes, C., Caton Harrison, T., Phillips, T., Jena, B., Reeves-Francois, T., Fogt, R., Thomas, E. R., and Bajish, C. C.: Record low Antarctic sea ice cover in February 2022, *Geophys. Res. Lett.*, 49, e2022GL098904, <https://doi.org/10.1029/2022GL098904>, 2022.
- Usbeck, R., Rutgers van der Loeff, M., Hoppema, M., and Schlitzer, R.: Shallow remineralization in the Weddell Gyre, *Geochem. Geophys. Geosys.*, 3, 1–18, <https://doi.org/10.1029/2001GC000182>, 2002.
- Van de Putte, A. P., Griffiths, H. J., Brooks, C., Bricher, P., Sweetlove, M., Halfter, S., and Raymond, B.: From data to marine ecosystem assessments of the Southern Ocean: Achievements, challenges, and lessons for the future, *Front. Mar. Sci.*, 8, 637063, <https://doi.org/10.3389/fmars.2021.637063>, 2021.
- van Heuven, S. M. A. C., Hoppema, M., Huhn, O., Slagter, H. A., and de Baar, H. J. W.: Direct observation of increasing CO_2 in the Weddell Gyre along the Prime Meridian during 1973–2008, *Deep-Sea Res. Pt. II*, 58, 2613–2635, <https://doi.org/10.1016/j.dsr2.2011.08.007>, 2011.
- Van Opzeeland, I., Van Parijs, S., Bornemann, H., Frickenhaus, S., Kindermann, L., Klinck, H., Plötz, J., and Boebel, O.: Acoustic ecology of Antarctic pinnipeds, *Mar. Ecol. Prog. Ser.*, 414, 267–291, <https://doi.org/10.3354/meps08683>, 2010.
- Vancoppenolle, M., Meiners, K., Michel, C., Bopp, L., Brabant, F., Carnat, G., Delille, B., Lannuzel, D., Madec, G., Moreau, S., Tison, J.-L., and van der Merwe, P.: Role of sea ice in global biogeochemical cycles: emerging views and challenges, *Quat. Sci. Rev.*, 79, 207–230, <https://doi.org/10.1016/j.quascirev.2013.04.011>, 2013.
- Verbitsky, J.: Ecosystem services and Antarctica: The time has come?, *Ecosys. Serv.*, 29, 381–394, <https://doi.org/10.1016/j.ecoser.2017.10.015>, 2018.
- Vernet, M., Geibert, W., Hoppema, M., Brown, P., Haas, C., Hellmer, H. H., Jokat, W., Jullion, L., Mazloff, M., Bakker, D. C. E., Brearley, A., Croot, P., Hattermann, T., Hauck, J., Hillenbrand, C. D., Hoppe, J. C. M., Huhn, O., Koch, B. P., Lechtenfeld, O. J., Meredith, M. P., Naveira Garabato, A. C., Nöthig, E. M., Peeken, I., Polzin, K., Rutgers van der Loeff, M. M., Schmidtko, S., Schröder, M., Strass, V. H., Torres-Valdés, S., and Verdy, A.: The Weddell Gyre, Southern Ocean: Present knowledge and future challenges, *Rev. Geophys.*, 57, 623–708, <https://doi.org/10.1029/2018RG000604>, 2019.
- Walther, G. R., Post, E., Convey, P., Menzel, A., Parmesan, C., Beebee, T. J. C., Fromentin, J. M., Hoegh-Guldberg, O., and Bairlein, F.: Ecological responses to recent climate change, *Nature*, 416, 389–395, 2002.

- Watanabe, Y., Bornemann, H., Liebsch, N., Plötz, J., Sato, K., Naito, Y., and Miyazaki, N.: Seal-mounted cameras detect invertebrate fauna on the underside of an Antarctic ice shelf, *Mar. Ecol. Prog. Ser.*, 309, 297–300, <https://doi.org/10.3354/meps309297>, 2006.
- Wege, M., Salas, L., and LaRue, M.: Citizen science and habitat modelling facilitates conservation planning for crabeater seals in the Weddell Sea, *Divers. Distrib.*, 26, 1291–1304, <https://doi.org/10.1111/ddi.13120>, 2020.
- Wege, M., Bornemann, H., Blix, A. S., Nordøy, E. S., Biddle, L. C., and Bester, M. N.: Distribution and habitat suitability of Ross seals in a warming Ocean, *Front. Mar. Sci.*, 8, 1–15, <https://doi.org/10.3389/fmars.2021.659430>, 2021a.
- Wege, M., Salas, L., and LaRue, M.: Ice matters: Life-history strategies of two Antarctic seals dictate climate change eventualities in the Weddell Sea, *Glob. Change Biol.*, 27, 6252–6262, <https://doi.org/10.1111/gcb.15828>, 2021b.
- Weller, R., Levin, I., Wagenbach, D., and Minikin, A.: The air chemistry observatory at Neumayer Stations (GvN and NM-II) Antarctica, *Polarforschung* 76, 39–46, 2006.
- Wilkinson, M. D., Dumontier, M., Aalbersberg, I. J., Appleton, G., Axton, M., Baak, A., Blomberg, N., Boiten, J.-W., da Silva Santos, L. B., Bourne, P. E., Bouwman, J., Brookes, A. J., Clark, T., Crosas, M., Dillo, I., Dumon, O., Edmunds, S., Evelo, C. T., Finkers, R., Gonzalez-Beltran, A., Gray, A. J. G., Groth, P., Goble, C., Grethe, J. S., Heringa, J., 't Hoen, P. A. C., Hooft, R., Kuhn, T., Kok, R., Kok, J., Lusher, S. J., Martone, M. E., Mons, A., Packer, A. L., Persson, B., Rocca-Serra, P., Roos, M., van Schaik, R., Sansone, S.-A., Schultes, E., Sengstag, T., Slater, T., Strawn, G., Swertz, M. A., Thompson, M., van der Lei, J., van Mulligen, E., Velterop, J., Waagmeester, A., Wittenburg, P., Wolstencroft, K., Zhao, J., and Mons, B.: The FAIR Guiding Principles for scientific data management and stewardship, *Sci. Data*, 3, 160018, <https://doi.org/10.1038/sdata.2016.18>, 2016.
- Windisch, H. S., Frickenhaus, S., John, U., Knust, R., Pörtner, H.-O., and Lucassen, M.: Stress response or beneficial temperature acclimation: transcriptomic signatures in Antarctic fish (*Pachycara brachycephalum*), *Mol. Ecol.*, 23, 3469–3482, <https://doi.org/10.1111/mec.12822>, 2014.
- Xavier, J. C., Mateev, D., Capper, L., Wilmotte, A., and Walton, D. W. H.: Education and outreach by the Antarctic Treaty parties, observers and experts under the framework of the Antarctic Treaty Consultative Meetings, *Polar. Rec.*, 55, 241–244, <https://doi.org/10.1017/S003224741800044X>, 2019.
- Ye, Y., Völker, C., and Gledhill, M.: Exploring the iron-binding potential of the ocean using a combined pH and DOC parameterization, *Global Biogeochem. Cy.*, 34, e2019GB006425, <https://doi.org/10.1029/2019GB006425>, 2020.
- Younger, J. L., Emmerson, L. M., and Miller, K. J.: The influence of historical climate changes on Southern Ocean marine predator populations: a comparative analysis, *Glob. Change Biol.*, 22, 474–493, 2016.
- Zhou, Q., Hattermann, T., Nøst, O. A., Biuw, M., Kovacs, K. M., and Lydersen, C.: Wind driven spreading of freshwater beneath the ice shelves in the Eastern Weddell Sea, *J. Geophys. Res.-Oceans*, 119, 3818–3833, <https://doi.org/10.1002/2013JC009556>, 2014.
- Zwerschke, N., Sands, C. J., Roman-Gonzalez, A., Barnes, D. K. A., Guzzi, A., Jenkins, S., Muñoz-Ramírez, C., and Scourse, J.: Quantification of blue carbon pathways contributing to negative feedback on climate change following glacier retreat in West Antarctic fjords, *Glob. Change Biol.*, 28, 8–20, <https://doi.org/10.1111/gcb.15898>, 2022.