



HAL
open science

Allele mining of eukaryotic translation initiation factor genes in *Prunus* for the identification of new sources of resistance to sharka

David Tricon, Julie Faivre D'arcier, Jean-Philippe Eyquard, Shuo Liu, Stéphane Decroocq, Aurélie Chague, Weisheng Liu, Gulnara Balakishiyeva, Alamdar Mammadov, Timur Turdiev, et al.

► To cite this version:

David Tricon, Julie Faivre D'arcier, Jean-Philippe Eyquard, Shuo Liu, Stéphane Decroocq, et al.. Allele mining of eukaryotic translation initiation factor genes in *Prunus* for the identification of new sources of resistance to sharka. *Scientific Reports*, 2023, 13, 10.1038/s41598-023-42215-w . hal-04302686

HAL Id: hal-04302686

<https://hal.science/hal-04302686>

Submitted on 23 Nov 2023

HAL is a multi-disciplinary open access archive for the deposit and dissemination of scientific research documents, whether they are published or not. The documents may come from teaching and research institutions in France or abroad, or from public or private research centers.

L'archive ouverte pluridisciplinaire **HAL**, est destinée au dépôt et à la diffusion de documents scientifiques de niveau recherche, publiés ou non, émanant des établissements d'enseignement et de recherche français ou étrangers, des laboratoires publics ou privés.



Distributed under a Creative Commons Attribution 4.0 International License



OPEN

Allele mining of eukaryotic translation initiation factor genes in *Prunus* for the identification of new sources of resistance to sharka

David Tricon^{1,2,9}, Julie Faivre d'Arcier^{1,2,10}, Jean-Philippe Eyquard^{1,2}, Shuo Liu^{1,2,3}, Stéphane Decroocq^{1,2}, Aurélie Chague^{1,2}, Weisheng Liu³, Gulnara Balakishiyeva⁴, Alamdar Mammadov⁴, Timur Turdiev⁵, Tatiana Kostritsyna⁶, Bayram M. Asma⁷, Zeynal Akparov⁸ & Véronique Decroocq^{1,2}✉

Members of the eukaryotic translation initiation complex are co-opted in viral infection, leading to susceptibility in many crop species, including stone fruit trees (*Prunus* spp.). Therefore, modification of one of those eukaryotic translation initiation factors or changes in their gene expression may result in resistance. We searched the crop and wild *Prunus* germplasm from the Armeniaca and Amygdalus taxonomic sections for allelic variants in the *eIF4E* and *eFiso4E* genes, to identify alleles potentially linked to resistance to Plum pox virus (PPV). Over one thousand stone fruit accessions (1397) were screened for variation in *eIF4E* and *eFiso4E* transcript sequences which are in single copy within the diploid *Prunus* genome. We identified new alleles for both genes differing from haplotypes associated with PPV susceptible accessions. Overall, analyses showed that *eFiso4E* is genetically more constrained since it displayed less polymorphism than *eIF4E*. We also demonstrated more variations at both loci in the related wild species than in crop species. As the *eFiso4E* translation initiation factor was identified as indispensable for PPV infection, a selection of ten different *eFiso4E* haplotypes along 13 accessions were tested by infection with PPV and eight of them displayed a range of reduced susceptibility to resistance, indicating new potential sources of resistance to sharka.

Viral diseases represent an increasing problem in modern, intensive agriculture, and the situation is expected to intensify with global warming. Control measures against viral diseases include the use of virus-free seeds or rootstocks, chemical controls of virus-transmitting vectors, and deployment of virus-resistant cultivars based on dominant or recessive resistance mechanisms¹. While dominant resistance is, in general, an induced and race-specific resistance, recessive resistance in plant-virus interactions is more likely to derive from a passive mechanism due to the absence or to the inappropriate nature of a host factor specifically required by the virus to complete its life cycle². The corresponding dominant allele, also called susceptibility allele or (S)-gene, is conceptually envisioned as encoding a susceptibility factor needed by the virus (see review³). Up to now, resistant cultivars were based, in many cases, on dominant resistance (R)-genes which are an attractive option for breeders because they are easy to manipulate in breeding programs. However, they are not always available in the natural

¹INRAE, UMR 1332 BFP, Virologie, 71 Avenue Edouard Bourlaux, 33882 Villenave d'Ornon, France. ²UMR 1332 BFP, CS20032, Université de Bordeaux, 33882 Villenave d'Ornon, France. ³Liaoning Institute of Pomology, Tiedong Street, Xiongyue Town, Bayuquan District, Yingkou 115009, Liaoning, China. ⁴Institute of Molecular Biology and Biotechnologies, Ministry of Science and Education, 11 Izzat Nabiev Str., 1073 Baku, Azerbaijan. ⁵Institute of Plant Biology and Biotechnology, Timiryazev Str. 45, 050040 Almaty, Kazakhstan. ⁶International Higher School of Medicine, 1F Intergel'po Street, 720054 Bishkek, Kyrgyzstan. ⁷Department of Horticulture, Malatya Turgut Ozal University, Malatya 44210, Turkey. ⁸Genetic Resources Institute of ANAS, Azadlig Ave. 155, 1106 Baku, Azerbaijan. ⁹Present address: INRAE Unité de Recherches 1052 GAFL, 67 allée des Chênes, 84143 Montfavet, France. ¹⁰Present address: INRAE Unité Expérimentale Domaine des Jarres, 33210 Toulence, France. ✉email: veronique.decroocq@inrae.fr

diversity of crop species and their interspecific transfer from model plants to crop species proves difficult⁴. An alternative strategy is to employ recessive resistance based on the defect of a (*S*)-gene. Recent studies showed that this resistance mechanism is more easily transferred from model plants to crop species. Indeed, (*S*)-genes are constitutive host cell factors that are co-opted and required by the pathogen to complete or sustain its infectious cycle (ex. the translation initiation factors in⁵). They are thus expected to be highly conserved across plant genera and if a virus recruits them in a model plant, it likely uses them in its natural host crop species. This is the case of the eukaryotic translation initiation factors, eIF4E and its isoform, eIFiso4E (see review⁶). In consequence, the search for allelic variants of these genes that no longer exhibit a susceptible response, i.e., the type of host variant encountered in a compatible host/virus interaction, could potentially lead to new sources of resistance. This was demonstrated in various crop species such as tomato, melon and pepper. Allele mining by targeting (*S*)-genes in those crop species and natural populations has emerged as an important approach for cloning and characterizing new forms of disease resistance factors^{7–11}.

In stone fruit tree species, sharka is the most detrimental disease, with significant socio-economic impact, especially in Europe¹². The causative agent is a potyvirus of the species *Plum pox virus* (PPV)¹³. Few sources of resistance to this disease have been described but none of them in peach or diploid plum. Resistance to sharka was identified and documented in wild *Prunus armeniaca* (apricot)¹⁴ as well as in peach related species, such as *P. davidiana*¹⁵ and *P. dulcis* (almond)^{16,17}. Although significant effort was devoted to finding genes controlling resistance to PPV, their characterization and utilization have proven to be a long and arduous endeavor¹⁸. Moreover, those sources of resistance are rather limited, with one single origin per species¹⁹. Recent history has demonstrated the dangers of relying too heavily on such a limited resistant germplasm, especially when confronted with the diversity of the virus¹³. To diversify those sources of resistance to PPV and find new ones, other resistance mechanisms were identified in the model plant *Arabidopsis thaliana* that are linked/bound to factors of the translation initiation machinery, eIFiso4E and eIFiso4G1^{20,21}.

In eukaryotes, translation initiation factors are encoded by a small multi-gene family in which isoforms partly act redundantly. In plants, potyviruses have a specific requirement for a given protein, eIF4E/eIF4G or their isoforms eIFiso4E/eIFiso4G that depends on the host plant and on the virus²². For example, viruses of the species *Lettuce mosaic virus* (LMV) use eIF4E to infect *Lactuca sativa* (lettuce) but use eIFiso4E in the case of *Arabidopsis thaliana*²³. Previous studies showed that, in the case of PPV, the eIFiso4E factor is indispensable to viral infection both in *Arabidopsis thaliana* and the European hexaploid plum *P. domestica*^{20,24}. However, in the diploid plum *P. salicina*, an RNAi silenced *eIFiso4E* transgenic plant could not be obtained by 35S-overexpressing an intron-spliced-hairpin *eIFiso4E* construct²⁵. As *eIFiso4E* is a single-copy gene on the *Prunus* diploid genome, this is probably due to a lethal counter-effect of the eIFiso4E null allele on plant growth in diploid *Prunus* species. On the contrary, the silencing of one of the two copies of *eIFiso4G* displays durable and stable resistance to PPV, with no consequence onto plum tree growth²⁵.

Here, our goal was to investigate natural allelic variation in the *Prunus eIF4E* and *eIFiso4E* genes among the stone fruit cultivated germplasm (apricot, almond and peach crop species) as well as their wild related, ornamental and undomesticated species. Due to mRNA length constraints, we focused in this study on the *eIF4E* and isoform *eIFiso4E* genes (600 to 700 bp long, Table 1) and not on the *eIF4G* genes (> 2.5 kb). Our first objective was to evaluate and compare *eIF4E* and *eIFiso4E* genetic diversity within the cultivated and the wild *Prunus* germplasm, according to their species and to their regions of origin. Several haplotypes with various sites comprising amino acid substitutions, insertions and deletions with however no frame-shift or stop-codon, were identified in both *eIF4E* and *eIFiso4E* sequences. Because most of the crop species of *Prunus* are susceptible to sharka, we examined intraspecific relative to interspecific gene variability to test the hypothesis that more new alleles could be found in wild related, ornamental and undomesticated species. We secondly identified haplotypes of the *eIFiso4E* with variations in the coding sequence that could confer resistance to sharka. We assessed susceptibility to PPV for rare allelic variation of the eIFiso4E susceptible factor found in less than 5% of the sequences and identified new potential sources of resistance to sharka.

	Number of individuals		Coding sequence length (bp)		Amino acids length	
	<i>eIF4E</i>	<i>eIFiso4E</i>	<i>eIF4E</i>	<i>eIFiso4E</i>	<i>eIF4E</i>	<i>eIFiso4E</i>
Armeniaca main group	695	767	702	639-642-645	234	213-214-215
Apricot crop species	400	413	702	639-642-645	234	213-214-215
Wild apricots	220	268	702	639-642	234	213-214
Apricot related species	75	86	702	642	234	214
Amygdalus main group	189	182	702	642-645-648	234	214-215-216
Almond crop species	134	127	702	642-645-648	234	214-215-216
Almond related species	55	55	702	642-645-648	234	214-215-216
Persica main group	284	282	702	642-645-648	234	214-215-216
Peach crop species	252	248	702	642-645-648	234	214-215-216
Peach related species	32	34	702	642-645	234	214-215

Table 1. Number of accessions from which eIF4E and eIFiso4E sequences were retrieved. Length variations of sequences are indicated in base pairs (bp) and amino acids.

Results

Overall descriptions of the plant material of this study are reported in Fig. 1A,B and Table S1 (see below the “Plant material and sampling” section in “Materials and methods” for more details).

***eIF4E* and *eIFiso4E* coding and amino acid sequence lengths.** The *eIF4E* coding sequence was 702 base pairs long, from the start codon to the stop codon and the predicted protein was 234 amino acids long for all the accessions. Sequence length variations were observed for *eIFiso4E* due to the presence or the absence of triplets of nucleotides causing no frame shift. In consequence, the *eIFiso4E* coding sequence varies from 639 to 648 base pairs and the protein, from 213 to 216 amino acids (Table 1).

Polymorphism and heterozygosity among the *eIF4E* and *eIFiso4E* loci. Overall data and results are illustrated and reported in Fig. 2 and Tables S2 and S3. We surveyed a total of 1397 accessions from the *Prunus* genus (Table S1). Sequences obtained from messenger RNA reverse transcription were allocated to three main groups following the subgenera in the *Prunus* taxonomy: Armeniaca, Amygdalus and Persica (Fig. 1A). Subgroups include either (i) crop species (*P. armeniaca*, *P. dulcis*, *P. persica*), (ii) wild, undomesticated crop species (i.e. wild *P. armeniaca*) or (iii) wild related and ornamental species (species of the same group but distinct from the cultivated forms *P. armeniaca*, *P. dulcis* and *P. persica*). In this study, a haplotype corresponds to a set of linked/phased variants (alleles) located along the same chromosome and that are thus inherited together. Haplotypic richness was also calculated as the number of haplotypes per group or subgroup that differ from the reference haplotype (Tables S2 and S3).

At the *eIF4E* locus, all diversity parameters (substitutions/variations and heterozygosity) were the highest in the Amygdalus group compared to the Armeniaca and Persica groups (Fig. 2A, p -values < 0.0001 in Table S2B). Moreover, regardless of the main groups, wild related species showed a significantly higher haplotypic richness (p -values < 0.001) than crop species. Although data were not significantly different in few cases, the wild related species tend to display higher heterozygosity and a higher number of accessions with nucleotide substitutions and amino acid changes than the crop species (Table S2B).

At the *eIFiso4E* locus, the three main groups, i.e., Armeniaca, Amygdalus and Persica, showed significant differences for all parameters of diversity of *eIFiso4E* displayed in Table S3B (p -values < 0.0001). The Amygdalus group showed both the highest number of accessions with amino acid variation and haplotypic richness while the Armeniaca group had the highest number of accessions with heterozygosity and variations at the coding sequence level. The Persica group showed the lowest diversity for each criterion (Fig. 2B, Table S3B). Here also, wild related species for the three main groups showed significantly higher haplotypic richness than the crop species (p -values < 0.05 , Table S3B). Moreover, as for *eIF4E*, wild related species showed a significantly higher heterozygosity level than the crop species, except for the Amygdalus group. While the frequency of accessions with variations in coding sequences compared to the reference accession is not significantly different between the three Armeniaca subgroups, amino acid variations are significantly higher in wild apricots (p -value < 0.0001 , Table S3B). The most striking observation was for the Persica group in which wild related species showed a very significantly higher diversity than crop species (p -values < 0.0001 for all measured criteria in Table S3B).

Genetic diversity of *eIF4E* and *eIFiso4E* among the three *Prunus* groups. Nucleotide (π) and haplotype (Hd) diversities were both calculated across the *eIF4E* and *eIFiso4E* gene sequences for the Armeniaca, Amygdalus and Persica groups (Table 2A). While π is used to measure the degree of polymorphism within a population or group of accessions, Hd is a measure of the uniqueness of a particular haplotype in a given population or a group of accessions.

For both genes, π values were globally in the same range (10^{-3}) except for the wild apricots for *eIF4E* and for the peach crop species for *eIFiso4E* (10^{-4}). Similar ranges of nucleotide diversity have already been observed in whole genome sequences of apricot and peach crop and wild species^{26,27}. In *eIFiso4E*, Hd was in the same range of values (10^{-1}) as *eIF4E* except for the peach crop species subgroup (10^{-2}). For both genes, π and Hd values were higher in all wild related species subgroups compared to the crop species ones, except, the Hd value for *eIFiso4E* in the almond crop species where it was slightly higher than that of the wild related species. Moreover, the Amygdalus group showed the highest values while the lowest ones were observed in the Persica group except for Hd of *eIF4E* in the Armeniaca group. Additionally, peach crop species displayed a significant drop in both π and Hd for *eIFiso4E* values in comparison with its wild related species (Table 2A,B).

The Tajima's D statistics showed a negative value in all *Prunus* groups except for a slight neutral value at the *eIFiso4E* locus in wild apricots (e.g., 0.20376, Table 2A). The non-synonymous/synonymous substitution ratio, dn/ds , was found less than 1, showing evidence that synonymous mutations are more frequent than the non-synonymous ones, excepted in *eIF4E* for peach crop species ($dn/ds = 2.45652$, Table 2A). These ratio values also indicated that non-synonymous mutations were less prevalent on *eIFiso4E* compared to *eIF4E*, in particular in crop and wild related species of Armeniaca and Persica ($dn/ds_{eIFiso4E} < dn/ds_{eIF4E}$, Table 2A). Moreover, at the whole gene level in all groups and subgroups, for both *eIF4E* and *eIFiso4E* the RELAX and BUSTED tests did not reveal any evidence of gene-wide relaxed nor intensified selection, neither positive or negative selection in the phylogeny of the genetic diversity of the sequences (p -values > 0.05).

***eIF4E* and *eIFiso4E* haplotypes.** At the amino acid sequence level, a total of 49 *eIFiso4E* haplotypes differing from the PPV susceptible haplotypes of the Armeniaca, Amygdalus and Persica groups were identified, whereas 99 haplotypes were counted for *eIF4E* (Table 3A). It was shown previously that PPV infection requires a functional *eIFiso4E* translation initiation complex^{24,25}. In consequence, we will hereafter focus exclusively on *eIFiso4E* haplotype variation. Susceptibility to the virus is predominant in the *Prunus* germplasm, therefore,

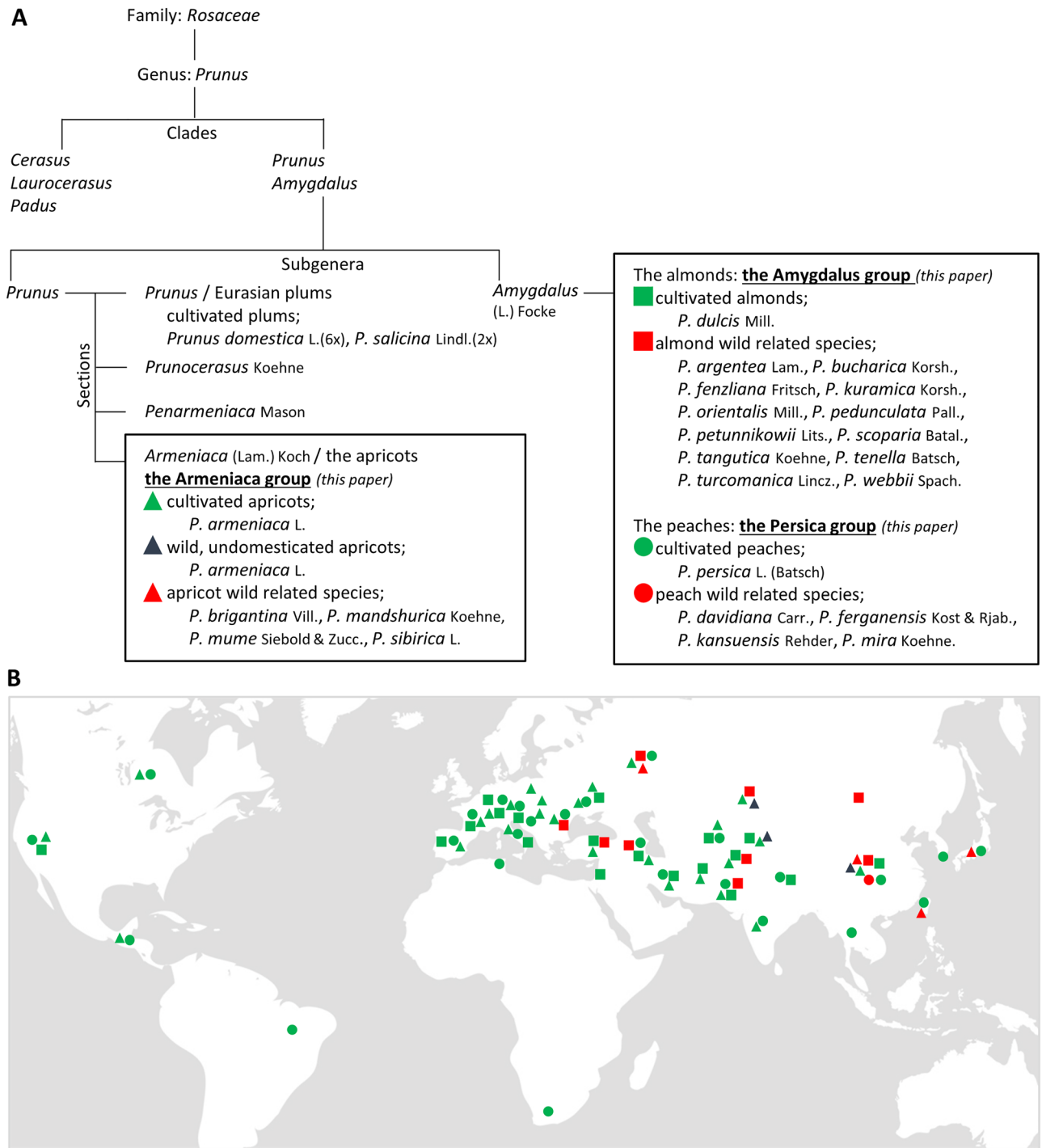


Figure 1. Taxonomy and geographic distribution of *Prunus* accessions. **(A)** Taxonomy and schematic phylogeny of the accessions used in this study. Classification follows previous classifications of Bortiri et al.⁴⁵ linked with Rehder⁴⁶ and Mason⁴⁷. Black squares localize the three main groups of this work in the *Prunus* genus: the Armeniaca, the Amygdalus and the Persica groups representing accessions related to apricots, almonds and peaches identified by triangles, squares and circles respectively. Green, red and blue colors refer to crop species, wild related species and wild/undomesticated apricots respectively. **(B)** Geographic distribution of the accessions used in this study according to their country of initial sampling (see Table S1). The world map can be downloaded under free license at <https://www.vecteezy.com/vector-art/10961532-world-map-vector-illustration-isolated-on-grey-background-flat-earth-globe-or-world-map>.

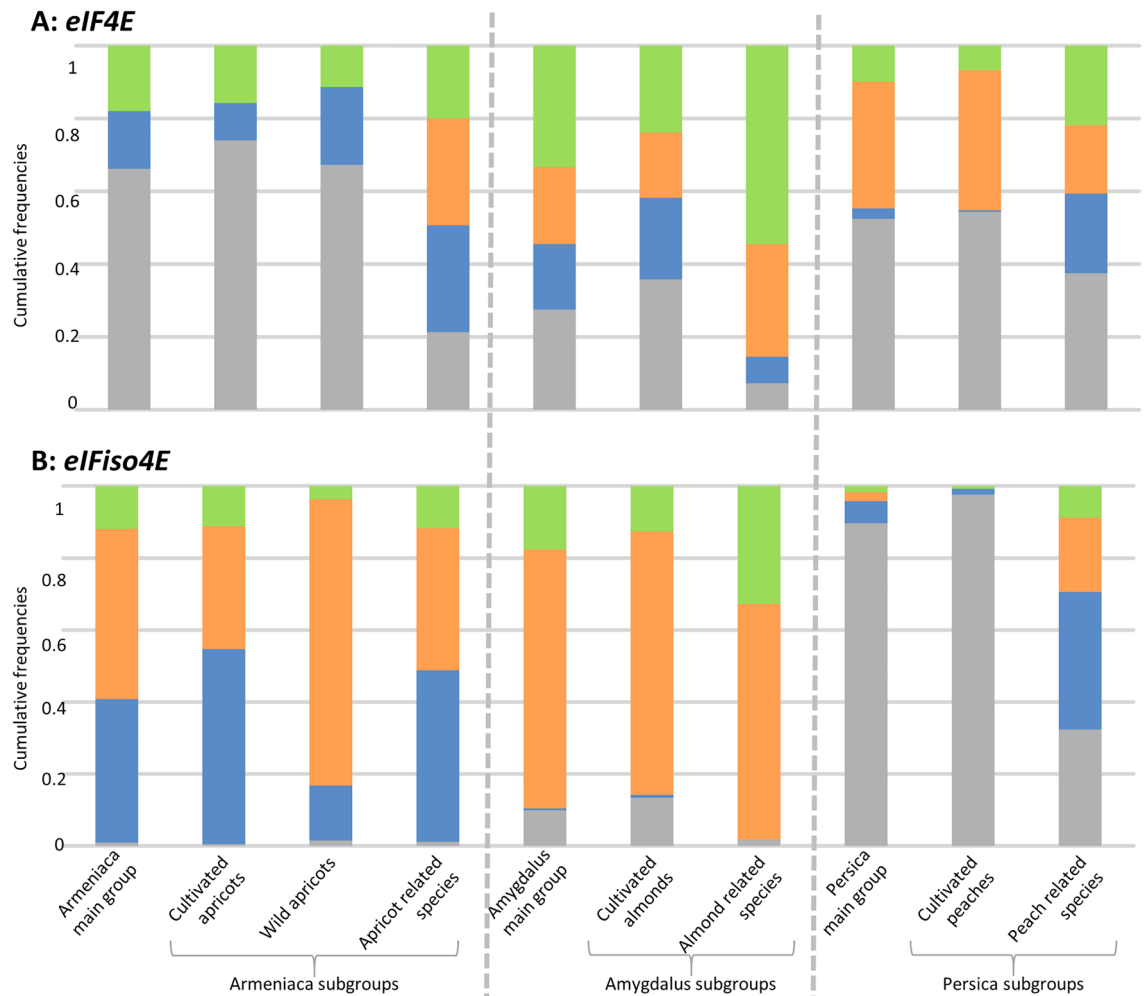


Figure 2. Stacked diagrams with cumulative frequencies of variations in *eIF4E* (A) and *eIFiso4E* (B) amino acid sequences within main groups and subgroups compared to their own main group reference sequence. Diagrams categorize frequencies following accessions; with identical sequences to the reference in grey, with at least one nucleotide substitution resulting in a synonymous variation in blue, with at least one amino acid variation (occurrence of presence > 5%) in orange and, with at least one rare amino acid variation (occurrence of presence < 5%) in green.

susceptibility alleles of *eIFiso4E* are expected to be more common than the rare resistant alleles among the *Prunus* germplasm.

Details of amino acid variations in haplotypes observed among the *Prunus* germplasm in the Armeniaca, Amygdalus and Persica groups are respectively depicted in Table S4A–C for *eIFiso4E*. As mentioned above, we did not comment data obtained for *eIF4E* (Table S5A–C). Indeed, we found that the *eIFiso4E* susceptible reference haplotypes are more prevalent than other haplotype frequencies to the reference in Persica (0.968085, Table S4C) and in Armeniaca (0.565189, Table S4A) as well as in Amygdalus (0.456054, Table S4B), if we overlook length polymorphism with the loss of one Alanine at position 28 (A28–) for *eIFiso4E*_Amy_P01.

Attention was first given to haplotypes found with a frequency lower than 5% in each main group (also called rare haplotypes) as reported in Table 3A. Rare haplotypes were identified both in the crop and the wild related species subgroups. *eIFiso4E* haplotypes differing from the susceptible reference were more often native of Asia (Central and Eastern Asia) and to the irano-caucasian region for Armeniaca (Table S4A) and Amygdalus with a Western European additional contribution for the latter (Table S4B). The few diverging Persica haplotypes came from Eastern Asia (Table S4C).

Several positions along the amino acid sequences were identified with at least one non-synonymous variation compared to the chosen reference sequence; 19, 20 and 8 positions for Armeniaca, Amygdalus and Persica groups respectively (Table 3B). *eIFiso4E* is a susceptibility gene for which a homozygous mutation can lead to recessive resistance to PPV²⁰, thus, we focused on homozygous variations over the *eIFiso4E* coding sequence. Among them, rare amino acid variations (occurrence < 5%) were selected under this threshold since resistance is less frequent than susceptibility in *Prunus* germplasm^{16,28} (Table 3A,B). We further looked for variations within the two interaction domains, domain I (DI) and domain II (DII), involved in the plant/virus compatible interaction as described by⁷ (Tables S4 and S5 and Fig. 3A: *eIFiso4E*, Fig. 3B: *eIF4E*; data not commented). Along the

A	π		Hd		dn/ds		Tajima's D	
	eIF4E	eIFiso4E	eIF4E	eIFiso4E	eIF4E	eIFiso4E	eIF4E	eIFiso4E
Armeniaca group	0.00126	0.0029	0.3789	0.8016	0.27891	0.11826	-2.28525	-1.6838
Apricot crop species	0.00116	0.00279	0.3198	0.8293	0.55307	0.08791	-2.28222**	-1.24793
Wild apricots	0.00078	0.00201	0.3210	0.6117	0.09455	0.18278	-1.71567	0.20376
Apricot related species	0.00286	0.00450	0.7417	0.8910	0.15252	0.07720	-1.57057	-1.28773
Amygdalus group	0.00503	0.00516	0.8160	0.9180	0.26722	0.15331	-2.05692*	-1.74178
Almond crop species	0.00255	0.00375	0.7308	0.8870	0.26898	0.13495	-2.10693*	-1.59196
Almond related species	0.00839	0.00634	0.9046	0.8537	0.32982	0.17519	-1.56449	-1.29035
Persica group	0.00142	0.00082	0.5752	0.1889	0.63500	0.03858	-1.90355*	-2.10157**
Peach crop species	0.00099	0.00022	0.5395	0.0438	2.45652	0.03191	-1.83100*	-1.97602*
Peach related species	0.00404	0.00313	0.7267	0.7401	0.16279	0.07125	-0.77135	-1.29487
B	eIF4E		eIFiso4E					
	Ratio of π	Ratio of Hd	Ratio of π	Ratio of Hd				
Amygdalus/Armeniaca	3.99206	2.15360	1.77931	1.14521				
Amygdalus/Persica	3.54225	1.41864	6.29268	4.85971				
Armeniaca/Persica	0.88732	0.65873	3.53659	4.24351				
Apricot related species/Apricot crop species	2.46552	2.31926	1.61290	1.07440				
Apricot related species/wild apricots	3.66667	2.31059	2.23881	1.45660				
Almond related species/Almond crop species	3.29020	1.23782	1.69067	0.96246				
Peach related species/Peach crop species	4.08081	1.34699	14.22727	16.89726				

Table 2. eIF4E and eIFiso4E genetic diversity parameters. A: Values of nucleotide diversity (π), haplotype diversity (Hd), ratio of substitution rate at non-synonymous to synonymous sites (dn/ds), and selection Tajima's D statistics with corresponding significance values (* for $p \leq 0.05$; ** for $p \leq 0.01$, calculated with DNAsp v.5.10.01 software in the main groups and subgroups). B: Ratios of π , Hd , and dn/ds between the main groups and between subgroups within the main groups.

eIFiso4E amino acid sequence, DI was delimited from position 46 to position 66 and DII from position 93 to position 96 (Fig. 3A). Additionally, we focused on variations impacting potentially the eIFiso4E 3D conformation and functionality that consequently may disturb the interaction with the viral protein but do not impact its role as a translation initiation factor. In the latter case, Meta-SNP, MutPred2 and PredictSNP online predictors were used to predict the impact of the variation(s) at the molecular and functional levels of the protein (Table S6A–C).

Regarding all the groups at the same time, one hot spots' region of rare amino acid variations was identified along the eIFiso4E sequences, in the N-terminal region, within the first forty amino acids of the sequence whereby up to 90% of the non-synonymous rare variations mapped in this region (Fig. 3A, Table S4). Other variations were scattered along the amino acid sequence.

The analysis of the selection pressure for each site performed by the FUBAR test identified one amino acid variation per group that was positively selected (p -values < 0.05): D149E for Armeniaca, A127P for Amygdalus and N94S in DII for Persica.

In the Armeniaca group, the eIFiso4E_Arm_P15 haplotype was the only one described with homozygous amino acid variations in the interaction domain I at positions 55 and 58 (K55N and Q58K, respectively) (Table 3A). It was identified within the US_108 accession (cv. Yanmei, *P. mume*) originating from Japan (Tables 3A,B, S4A, S6A). Together with the K55N amino acid variation, four other variations at positions 2, 144 and 181 (A2E, A2V, Q144H and I181N) were predicted to have an effect in protein conformation. However, they were found in heterozygous allelic forms in the eIFiso4E_Arm_P04, eIFiso4E_Arm_P06, eIFiso4E_Arm_P09 and eIFiso4E_Arm_P17 haplotypes, respectively (Table S6A).

In the Amygdalus group, three different variations in the interaction domains were identified; S65T (DI) in the heterozygous eIFiso4E_Amy_P16, N94S (DII) in the homozygous eIFiso4E_Amy_P22 and eIFiso4E_Amy_P24, and D96E (DII) in the homozygous eIFiso4E_Amy_P21 with a potential effect on protein conformation for the latter (Tables 3A,B, S4B, S6B). Homozygous variations in DII were found in the almond related species *P. petun-nikowii* (US_073 and US_189) for N94S and *P. tenella* (US_135) for D96E (Table S6B). Those three accessions came from Kazakhstan in central Asia (Table S1). Predictions of non-synonymous variations with a significant effect on protein conformation at other positions as R101G, T131I, T131P, K204I and R212L were all detected in heterozygous allelic forms (Tables S4B, S6B).

In the Persica group, four haplotypes were detected with the variation N94S in DII (Table S4C). This amino acid variation was found homozygous in eIFiso4E_Per_P01 and eIFiso4E_Per_P04 from the *P. persica* AZ_092 (Azerbaijan) and the *P. davidiana* CH_002 (China) accessions, respectively. It was also found heterozygous in the eIFiso4E_Per_P04 and eIFiso4E_Per_P07 haplotypes (Table S6C). One single non-synonymous variation, E187D,

A								
Number of variable haplotypes:	Armeniaca		Amygdalus		Persica		3 <i>Prunus</i> groups	
	eIF4E	eIFiso4E	eIF4E	eIFiso4E	eIF4E	eIFiso4E	eIF4E	eIFiso4E
Differing from the susceptible reference haplotype	41	17	44	24	14	8	99	49
With occurrence < 5%	41	16	42	20	13	8	96	44
With occurrence < 5% and homozygous	12	8	12	10	8	5	32	23
With amino acid variation(s) inside the interaction domains	12/ <u>12</u> (6)	1/ <u>1</u> (1)	21/ <u>20</u> (6)	4/ <u>4</u> (3)	3/ <u>3</u> (3)	3/ <u>3</u> (2)		
With amino acid variation(s) inside interaction domain I	2/ <u>2</u> (0)	1/ <u>1</u> (1)	0	1/ <u>1</u> (0)	0	0		
With amino acid variation(s) inside interaction domain II	10/ <u>10</u> (6)	0	21/ <u>20</u> (6/5)	3/ <u>3</u> (3)	3/ <u>3</u> (3)	3/ <u>3</u> (2)		
B								
Number of:	Armeniaca		Amygdalus		Persica			
	eIF4E	eIFiso4E	eIF4E	eIFiso4E	eIF4E	eIFiso4E		
Positions with non synonymous variations along the amino acid sequence	32	19	32	20	16	8		
Amino acid variations	34	22	40	24	16	9		
Amino acid variations with occurrence < 5%	34	21	34	19	15	9		
Homozygous amino acid variations with occurrence < 5%	13	14	15	10	10	6		
Amino acid variations inside the interaction domains	4/ <u>4</u> (1)	2/ <u>2</u> (2)	1/0 (1)	3/ <u>3</u> (2)	1/ <u>1</u> (1)	1/ <u>1</u> (1)		
Amino acid variations inside interaction domain I	2/ <u>2</u> (0)	2/ <u>2</u> (2)	0	1/ <u>1</u> (0)	0	0		
Amino acid variations inside interaction domain II	2/ <u>2</u> (1)	0	1/0 (1)	2/ <u>2</u> (2)	1/ <u>1</u> (1)	1/ <u>1</u> (1)		

Table 3. Number of variable haplotypes and amino acid variations along the eIF4E and eIFiso4E sequences. A: Variable haplotypes derived from the susceptible reference in the main groups regarding occurrence (< 5%), homozygosity and localization of amino acid variations inside the interaction domains (DI or DII) of the sequences. Numbers underlined, in brackets or in bold indicate the number of variable haplotypes with amino acid variations in the interaction domains respectively found with an occurrence < 5%, homozygous or homozygous with an occurrence < 5% B: Number of positions with non synonymous variations and number of amino acid variations along eIF4E and eIFiso4E sequences regarding occurrence (< 5%), homozygosity, and localization of the amino acid variations in the interaction domains (DI or DII) of the sequences. Numbers underlined, in brackets or in bold indicate the number of amino acid variations respectively found with an occurrence < 5%, homozygous or homozygous with an occurrence < 5%.

that could result in a significant change in protein conformation was identified homozygous in the haplotype eIFiso4E_Per_P06 from the CH_154_3 accession (*P. davidiana*, China) (Tables S1, S6C).

The variation A127P was observed in all the three *Prunus* groups regarding the reference sequences (Fig. 3A) and was found homozygous in the Amygdalus *P. orientalis* TR_114, TR_115 (eIFiso4E_Amy_P05) and *P. webbii* US_193 accessions (eIFiso4E_Amy_P18). In Armeniaca, it was present in the homozygous eIFiso4E_Arm_P03 with *P. armeniaca* KZ_230_3 while in Persica, it was found heterozygous in the *P. davidiana* FR_AVI_056 accession (eIFiso4E_Per_P08).

Based on the above criteria i.e. non-synonymous and homozygous variation(s) potentially affecting the protein conformation of eIFiso4E and prioritizing the interaction domains, we selected a list of accessions to test for resistance to PPV under controlled conditions in a high confinement greenhouse (Table 4). Amino acid variations G38R in Armeniaca, A31P and S157N in Amygdalus were also targeted as they were homozygous and/or rare variations.

In total, 13 accessions were phenotyped up to three successive vegetative cycles (Table 4). The presence/absence of viral particles was estimated by serological assays (ELISA) using a PPV-specific antibody. No virus was detected over three cycles for seven Amygdalus accessions: one almond crop species *P. dulcis* US_037 and six almond wild related species among which five representatives of *P. fenzliana* (AZ_203_5, AZ_205_4, AZ_210_1, AZ_210_2, AZ_215_1) and one *P. tenella* (US_135). One representative of the peach wild related species, *P. davidiana* CH_154_3 was also scored PPV negative (Fig. 4). Intermediate susceptibility levels were measured in Amygdalus for *P. dulcis* KR_019_6 and US_012 as well as in *P. webbii* US_193. Amygdalus *P. fenzliana* AZ_219_1 and Armeniaca *P. brigantina* US_009 were moderately to highly susceptible, respectively (Table 4, Fig. 4, Table S7). In total, seven accessions were resistant to sharka. They will be further studied in progenies from crosses of these resistant accessions with PPV susceptible accessions, to verify co-segregation between the newly identified allelic variations in eIFiso4E and resistance to sharka.

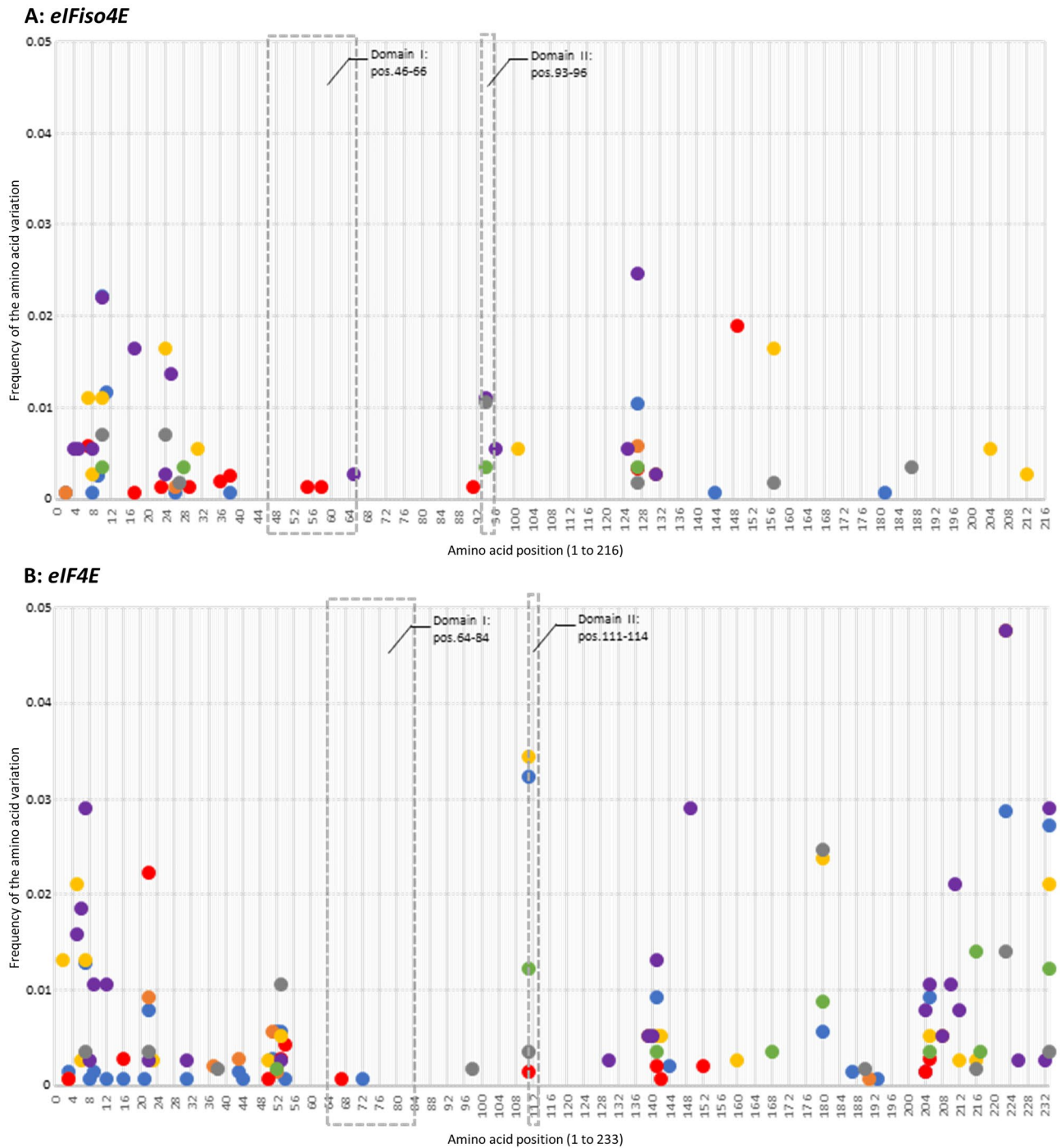


Figure 3. Frequency of rare amino acid variations (occurrence of presence < 5%) along eIFiso4E (A) and eIF4E (B) sequences. The interaction domains with the virus -Domain I and Domain II- are localized with their positions (pos.) on the sequences inside dotted grey rectangles. Each circle represents one amino acid variation retrieved at one specific position; each color refers to one subgroup as apricot crop species (blue), wild/undomesticated apricots (orange), apricot wild related species (red), almond crop species (yellow), almond wild related species (purple), peach crop species (green) and peach wild related species (grey).

Discussion

Because of their small genome size (a few kilobase pairs), viruses require (thus hijack) host proteins to complete their entire infectious cycle in the host plant, from viral RNA translation to virus movement, virion assembly and disassembly and viral replication²⁹. In the case of PPV, two previous studies demonstrated the central role of components from the translation initiation complex, eIFiso4F, in the PPV-compatible infection of stone fruit species (*Prunus* spp.)^{24, 25}. Previous studies identified resistance to PPV in *P. davidiana*, in crop almond (*P. dulcis*) and in crop apricot (*P. armeniaca*) through quantitative trait phenotyping^{16, 28, 30, 31}. One major locus

Accession name	Main group	Sub-group	Species	eIFiso4E haplotype	Homozygous amino acid variation in the interaction domains	Homozygous amino acid variation in other positions	Phenotyping results
KZ_230_3	Armeniaca	Wild apricots	<i>P. armeniaca</i>	eIFiso4E_Arm_P03		A127P	Not tested
US_009	Armeniaca	Apricot related species	<i>P. brigantina</i>	eIFiso4E_Arm_P14		G38R	Highly susceptible
US_108	Armeniaca	Apricot related species	<i>P. mume</i>	eIFiso4E_Arm_P15	DI: K55N/Q58K	L23V/A29T/S36I/F91L	Not tested
AZ_203_5	Amygdalus	Almond related species	<i>P. fenzliana</i>	eIFiso4E_Amy_P07 & P12		A28-/S157N	No virus detected
AZ_205_4	Amygdalus	Almond related species	<i>P. fenzliana</i>	eIFiso4E_Amy_P07		A28-/A31P/S157N	No virus detected
AZ_210_1	Amygdalus	Almond related species	<i>P. fenzliana</i>	eIFiso4E_Amy_P07		A28-/A31P/S157N	No virus detected
AZ_210_2	Amygdalus	Almond related species	<i>P. fenzliana</i>	eIFiso4E_Amy_P01 & P07		A28-/S157N	No virus detected
AZ_215_1	Amygdalus	Almond related species	<i>P. fenzliana</i>	eIFiso4E_Amy_P07		A28-/A31P/S157N	No virus detected
AZ_219_1	Amygdalus	Almond related species	<i>P. fenzliana</i>	eIFiso4E_Amy_P01 & P07		A28-/S157N	Moderately susceptible
KR_019_6	Amygdalus	Almond crop species	<i>P. dulcis</i>	eIFiso4E_Amy_P05		A28-/A127P	Weakly susceptible
TR_114	Amygdalus	Almond related species	<i>P. orientalis</i>	eIFiso4E_Amy_P18		A17V/A28-/A127P	Not tested
TR_115	Amygdalus	Almond related species	<i>P. orientalis</i>	eIFiso4E_Amy_P18		A17V/A28-/A127P	Not tested
US_012	Amygdalus	Almond crop species	<i>P. dulcis</i>	eIFiso4E_Amy_P12		A28-/S157N	Weakly susceptible
US_037	Amygdalus	Almond crop species	<i>P. dulcis</i>	eIFiso4E_Amy_P01 & P12		A28-/S157N	No virus detected
US_073	Amygdalus	Almond related species	<i>P. petunnikowii</i>	eIFiso4E_Amy_P24	DII: N94S	A28-	Not tested
US_135	Amygdalus	Almond related species	<i>P. tenella</i>	eIFiso4E_Amy_P21	DII: D96E	V10-/A28-	No virus detected
US_189	Amygdalus	Almond related species	<i>P. petunnikowii</i>	eIFiso4E_Amy_P22	DII: N94S	V5L/A8T/V10-/A28-	Not tested
US_193	Amygdalus	Almond related species	<i>P. webbii</i>	eIFiso4E_Amy_P18		A17V/A28-/A127P	Weakly susceptible
AZ_092	<i>Persica</i>	Peach crop species	<i>P. persica</i>	eIFiso4E_Per_P01	DII: N94S	V10-/A127G	Not tested
CH_002	<i>Persica</i>	Peach related species	<i>P. davidiana</i>	eIFiso4E_Per_P04	DII: N94S	E24D	Not tested
CH_154_3	<i>Persica</i>	Peach related species	<i>P. davidiana</i>	eIFiso4E_Per_P06		E187D	No virus detected

Table 4. List of selected accessions with eIFiso4E haplotypes derived from the reference sequence related to their main group. Haplotypes were selected following several criteria (i) a homozygous amino acid variation as a mandatory criterion, (ii) an amino acid variation in at least one interaction domain and/or with a significant predicted effect (see Table S6), (iii) a rare amino acid variation (occurrence < 5%) and (iv) accessions with budsticks available to be grafted. Accessions in italics were not phenotyped due to unsuccessful grafting. Amino acid variations in bold were predicted to have a significant effect on protein conformation/function. Other amino acid variations targeted in this study are underlined. The symbol "-" represents an amino acid deletion.

controlling resistance to sharka in apricot has been mapped on linkage group 1 and named PPVres^{18, 32, 33}. While the eIFiso4E gene maps on the upper end of the chromosome 1³⁰, it does not co-localize with PPVres. Therefore, finding eIFiso4E allelic variations impaired in Prunus-PPV interactions would provide new sources of resistance to sharka that could be combined with previously identified ones.

In the current study, the genetic diversity in the coding sequences of the recessive resistance gene eIFiso4E and of its counterpart, eIF4E, was analyzed in three *Prunus* crop species (apricots, almonds and peaches) and their wild related species from eleven geographic regions. The aim was to infer the evolutionary pattern of both genes involved in cellular translation initiation, to identify natural allele variations from susceptibility alleles and to evaluate the potential impact of these variations on *Prunus*/PPV interactions.

Polymorphism at both genes showed that the genetic diversity was globally higher among the wild related species than apricot, almond and peach crop species. Despite nucleotide variability presents in the 1,397 accessions screened here, none of them displayed null alleles due to frameshift variations causing truncated proteins. Low proportions of non-synonymous variations ($dn/ds < 1$ in the three main groups) likely indicated the removal of mutations that could be potentially deleterious or that could impair the proper functioning of the translation initiation complex. Likewise, Tajima's *D* statistics for the both loci showed negative values, thus demonstrating an absence of neutrality between the mean pairwise difference and the number of segregating sites, explained by an abundance of low frequency haplotypes and the dn/ds ratios. Interestingly, the eIFiso4E coding sequence appeared more constrained than eIF4E with a dn/ds ratio consistently lower for eIFiso4E than for eIF4E, except for the wild undomesticated apricots. That would indicate a higher cost of non-synonymous mutations at the eIFiso4E locus than eIF4E. This result is consistent with the hypothesis that non-functional or silenced eIFiso4E alleles are lethal or deleterious in diploid *Prunus* growth²⁵. Fitness cost of loss-of-function in eIFiso4E has been previously suspected for melon³⁴. The situation is different in wild apricots because of their self-incompatibility and thus an expected higher rate of heterozygosity would allow the occurrence of a higher number of non-synonymous mutations at the eIFiso4E locus.

Regarding the number of accessions with amino acid variations compared to those from the susceptible accessions, the estimators for: the haplotypic richness, the level of heterozygosity, the haplotype diversity (*Hd*)

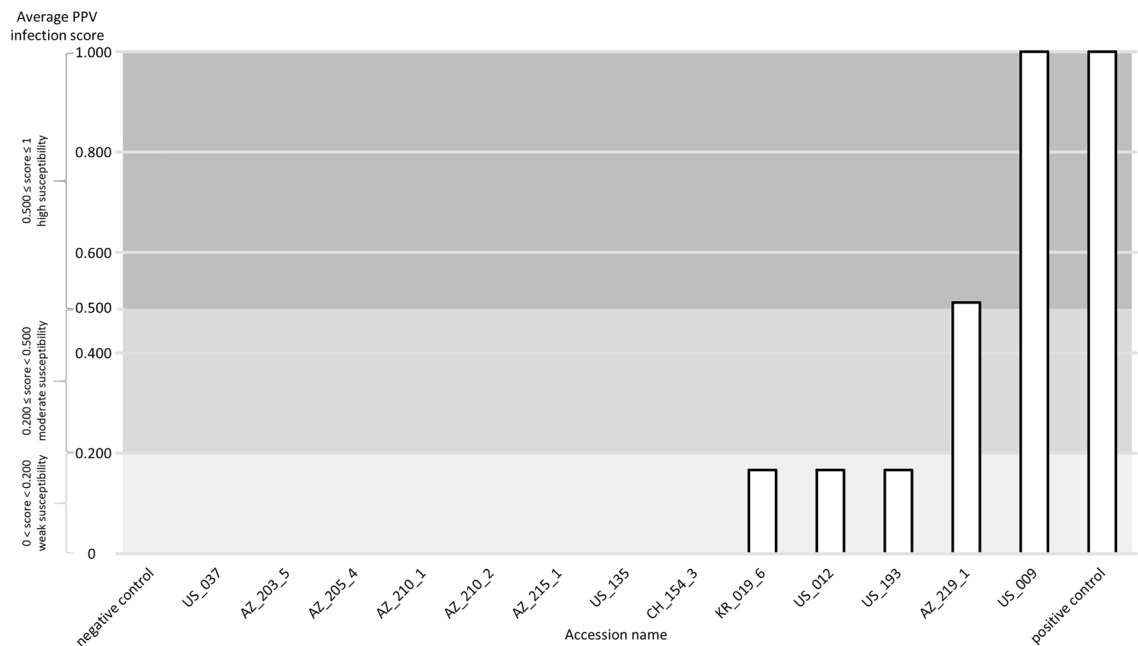


Figure 4. Average PPV infection score after successive cycles of phenotypic evaluation for the selected accessions (see Table 4). Resistance to PPV and the negative control are characterized by a null score (0). Three levels of susceptibility are categorized from a weak ($0 < \text{score} < 0.200$), then a moderate ($0.200 \leq \text{score} < 0.500$) to a high susceptibility score ($0.500 \leq \text{score} \leq 1$). The positive control is set to 1.

and the nucleotide diversity (π) were all significant strong indicators that *Prunus* related species actually constitute a reservoir of genetic diversity for alleles of interest. Three recent studies confirmed this view. In 2019, two consecutive studies showed that nucleotide diversity in peach wild related species was twice as much as that of peach landraces or peach improved cultivars^{26,35}. More recently in 2021, Groppi et al.²⁷ showed that undomesticated (wild) apricots from central Asia had global nucleotide diversity 1.5 times higher than cultivated European domesticated apricots.

When comparing genetic diversity within the *Prunoideae* subfamily, we observed that eIF4E genetic diversity was the highest for the *Amygdalus* group while that of the *eIFiso4E* locus was highest for the *Armeniaca* group. In contrast to these two loci, members of the *Persica* group displayed the lowest value of genetic diversity (π), the lowest frequency of amino acid variations and the lowest level of heterozygosity. Consequently, the identification of potential variations in candidate genes is more likely to be successful firstly in related species and secondly in *Amygdalus* and *Armeniaca* than in *Persica*. Those accessions we found exhibiting allelic variations that potentially affected the overall protein conformation or the plant-potyvirus interaction domain(s) were all tested for susceptibility to sharka and eight out of thirteen were resistant to PPV, among which six were from the almond wild related species, *P. fenzliana* (5) and *P. tenella* (1), and one was from a peach related species, *P. davidiana*. Only one of them were from crop species (almond, *P. dulcis*).

Provided that the observed resistance is indeed genetically controlled by the corresponding variations in the *eIFiso4E* coding sequence, our data provide new PPV resistant genitors. Regarding the amino acid variations; A28- and S157N are present in both susceptible (AZ_219_1, US_012, US_193) and resistant (AZ_203_5, AZ205_4, AZ210_1, AZ_210_2, AZ_215_1, US_037) accessions, thus, they are not correlated with the observed resistance phenotype. Nevertheless, further analyzes need to be performed for the amino acid variations V10- (US_135), A31P (AZ_205_4, AZ_210_1, AZ_215_1), D96E (US_135) and E187D (CH_154_3), all associated with PPV resistant accessions. Co-segregation between the above non-synonymous variations and response to PPV infection will have to be tested in F2 progenies because of the recessive nature of the resistance trait. Association between *eIF4E* variation and PPV infection was not tested here because previous studies demonstrated a role of the *eIFiso4F* complex in PPV infection but not for the *eIF4F* complex^{24,25}. However, those results were based on the infection of *eIFiso4E*- or *eIFiso4G*-silenced plum by the M and D PPV strains. This does not preclude a potential role of the *eIF4F* complex into the infection of cherry trees by more distinct strains such as PPV-C, thus providing further prospects to our *eIF4E* diversity sequence data.

Such investigation of genetic diversity in natural populations for one or several genes, also called EcoTILLING was developed as a non-transgenic reverse genetic approach in animals and plants to screen the natural diversity of targeted genes in many species³⁶. This strategy was successfully used to identify novel alleles for candidate genes involved in the resistance to diseases and specifically for the *eIF* susceptibility genes in melon¹⁰, pepper⁸ and barley³⁷. Our study reports the first screening of genetic diversity of two *eIF* genes in perennial fruit trees, i.e. *Prunus* species including both the crop and the wild (undomesticated and related species) germplasm. Novel *eIFiso4E* alleles in several *Prunus* species that could be associated with the resistance to PPV were identified; it provides initial insights on functional, genetic diversity and potential new sources of resistance to sharka.

Materials and methods

Plant material and sampling. The study includes a total of 1397 accessions from the *Prunus* genus (Table S1). Samples were allocated to three main groups following the subgenera in the *Prunus* taxonomy (Fig. 1A). The first group corresponds to representatives of the Armeniaca group ($n_{\text{Armeniaca}} = 892$) divided into three subgroups representing (i) apricot crop species (*Prunus armeniaca*) ($n_{\text{apricot_crop_species}} = 475$), (ii) wild, undomesticated apricots (*P. armeniaca*) ($n_{\text{wild_apricots}} = 315$) and (iii) apricot wild related and ornamental species ($n_{\text{apricots_related_species}} = 102$). The second main group was Amygdalus ($n_{\text{Amygdalus}} = 210$) divided between (i) almond crop species (*P. dulcis*) ($n_{\text{almond_crop_species}} = 138$) and (ii) almond wild related species ($n_{\text{almonds_related_species}} = 72$). The last main group was Persica ($n_{\text{Persica}} = 295$) composed of (i) peach crop species (*P. persica*) ($n_{\text{peach_crop_species}} = 260$) and (ii) peach related species ($n_{\text{peach_related_species}} = 35$). We acknowledge the highly valuable contribution of local collaborators and curators of the National repositories who undertook the formal identification of the plant material used in this study: M. Delmas assisted by J-M Audergon and H. Duval for the plant material held at the French GRC, J. Preece for the material issued by the ARS-USDA, B. Krska for the Czech Horticultural repository, B. M. Asma for the Turkish germplasm, G. Balakishiyeva and A. Mammadov for the *Prunus* species growing in Caucasia, T. Turdiev and T. Kostriysyna assisted by the late R. Karychev and W. Liu for the Chinese germplasm.

Apricots, almonds and peaches are crop species that comprise modern varieties, breeding genitors, ancient local varieties or landraces. Wild, undomesticated apricots correspond to accessions sampled away from the cultivated areas in the natural forest mountains of Central Asia. Wild related and ornamental species differ phylogenetically from the *P. armeniaca*, *P. dulcis* and *P. persica* crop species and were considered as related species of apricots, almonds and peaches, respectively. Accessions were sampled in different geographic areas; in orchards and different germplasm repositories, in private gardens, along the roads, or in natural forest mountains (Fig. 1B). For full details, see Table S1.

RNA extraction. Around 0.1 to 0.3 mg of fresh or lyophilized young leaves were collected in a 2 ml tube with two iron balls and then stored at -80°C . Samples were ground to obtain a uniform powder. Total RNAs were immediately extracted with the Macherey–Nagel NucleoSpin RNA plant extraction kit (<http://www.mn-net.com>). To increase the yield of total RNAs, the extraction procedure was modified by the addition of 1% of beta-mercaptoethanol and 1% w/v of PVP40 in the RAP extraction buffer. Only total RNAs with an absorbance ratio ($A_{260/280\text{ nm}}$) of 2 to 2.2 were used to pursue the analysis, otherwise RNAs were re-extracted. RNAs were then stored at -80°C .

Reverse transcription and gene amplification by PCR. cDNAs were synthesized from total RNAs in 96-well plates with the RevertAid H Minus Reverse Transcriptase and the oligo(dT)₁₈ primer according to the manufacturer's protocol (<http://www.thermoscientific.com>).

Two unique couples of specific primers for the amplification of the full-length open reading frames of the candidate genes were designed according to the published peach genome sequence in the Genomic Database for Rosaceae (GDR, <http://www.rosaceae.org>) and were used without primer sequence modification to perform all the polymerase chain reactions (PCRs) in the peach, almond, apricot and their related species genomes. The candidate genes are referenced as Prupe.4G072600.1 for *eIF4E* (coding sequence length: 705 bp), and Prupe.1G046600.1 for *eIFiso4E* gene (645 bp). For both genes and each accession, PCRs were performed in a final volume of 25 μL using the Taq DNA Polymerase from Qiagen (<http://www.qiagen.com>) with a modified mix proportions as followed; 10X Buffer/15 mM MgCl₂ (1X final), 25 mM MgCl₂ (to reach 2.5 mM final), dNTPs mix (0.25 mM final each), forward and reverse primers (0.5 μM final each), 5 U/ μL Taq Qiagen (0.625 U per reaction) and 2 μL of cDNAs matrix (20–50 ng/ μL). PCR cycling conditions were 3 min at 94°C for general denaturation followed by a one 3-step cycle repeated 40 times (denaturation for 30 s at 94°C , gene-specific primers' annealing temperature for 30 s and extension 40 s at 72°C) and a final extension for 10 min at 72°C . To perform PCR for *eIF4E*, primers' annealing temperature was optimized at 61°C with the forward primer 5'-CGCCAAGAAAAGA AAAGCGAG-3' and the reverse primer 5'-GCAAAGAACAATATACACATCA-3' and for *eIFiso4E* the annealing step was performed at 58°C with the forward primer 5'-AAACAACACAACCCCGACAG-3' and the reverse primer 5'-TCAAACATTGTATCGA-3'. PCR products were verified by electrophoresis with a 1.5% agarose gel and visually quantified by comparison with the MassRuler DNA ladder from ThermoScientific.

Allelic sequencing, phasing and alignment. PCR products were sequenced with the Sanger method by the Genewiz company, following recommendations available on the <http://www.genewiz.com> website. Quality of sequences was verified from the chromatograms using Chromas v.2.5.1 (<https://technelysium.com.au/wp/chromas/>). Sequences of accessions were all classified in a data file corresponding to the appropriate main group and subgroup in which they belonged (see “Plant material and sampling” section). As the *Prunus* species used in the current study are all diploid, each gene can have up to two alleles. In this case, heterozygous allelic forms with unphased genotypic data were rebuilt with the ELB algorithm method implemented in Arlequin v.3.5.2.2 as a pseudo-Bayesian approach to specifically estimate gametic phase in recombining sequences³⁸. Sets of phased alleles also called haplotypes were first aligned altogether using ClustalW Multiple Alignment method (1000 Bootstraps) using BioEdit v.7.1.3.0 software³⁹, then trimmed to deal with nothing else than the coding sequence from the start to the stop codons and finally translated into amino acid sequences.

Polymorphism detection and statistical analyses. For each main group and subgroup, amino acid sequences were compared to a reference haplotype corresponding to the sequence coming from a susceptible accession to PPV i.e., the apricot cultivar ‘Monique’ (*P. armeniaca*), the almond cultivar ‘Ai’ (*P. dulcis*) and the peach rootstock ‘GF305’ (*P. persica*) for the Armeniaca, Amygdalus and Persica groups and subgroups

respectively (see “Plant material and sampling” section). These sequences of reference were respectively called Arm_P00, Amy_P00 and Per_P00 (“P” for protein) with the prefix “eIF4E_” or “eIFiso4E_” (i.e. eIF4E_Arm_P00). For each new haplotype detected, the number after “P” was incremented (“P01”, “P02”, ...).

For both coding and amino acid sequences levels of homozygosity, heterozygosity, haplotypic richness and the presence of variations were evaluated and compared between groups and subgroups using Chi-square tests (χ^2 tests) statistical analyses performed by XLStat software v.2020.1.3. Frequencies of haplotypes and amino acid variations were also calculated and were called rare haplotypes and rare amino acid variations when their occurrences were less than 5%.

Genetic diversity parameters. Genetic diversity estimates were calculated using DNAsp v.5.10.01 software⁴⁰. The haplotype diversity (H_d), the nucleotide diversity (π), the ratio of non-synonymous to synonymous substitutions (dn/ds ratio) and the Tajima’s D statistic were calculated from allelic data for each main group and subgroup. The Datamonkey online database (<http://www.datamonkey.org>) was used to test the selection pressure on (i) the whole gene sequences with the RELAX test to analyze whether the strength of the selection has been relaxed or intensified along the phylogeny of the sequences and the BUSTED model (Branch-site Unrestricted Statistical Test for Episodic Diversification) to provide a gene-wide test for positive selection at at least one site on at least one phylogenetic branch, and (ii) at sequence sites with the FUBAR test (Fast Unconstrained Bayesian AppRoximation) for large data sets with a Bayesian approach to infer the dn/ds ratio on a per-site basis and detect positive or negative pervasive selection at the amino acid level assuming the selection pressure for each site is constant along the entire phylogeny⁴¹.

Predicting effects of amino acid variations on protein conformation/function. To predict the potential effect of amino acid variations on the protein conformation and/or function, three computational methods were used: (i) Meta-SNP (<https://snps.biofold.org/meta-snp/index.html>) a random forest-based binary classifier predictor combining predictions of four methods (SNAP2, SIFT, PANTHER, PhD-SNP) and four elements extracted from the PhD-SNP protein sequence profile based on training dataset derived from SwissVar⁴², (ii) MutPred2 (<http://mutpred.mutdb.org>) an algorithm able to quantify the pathogenicity of amino acid substitutions and describe how they can affect the protein function by modeling a broad repertoire of structural and functional alterations from amino acid sequence⁴³ and (iii) PredictSNP (<https://loschmidt.chemi.muni.cz/predictsnp1/>) a consensus classifier combining eight prediction methods (MAPP, PhD-SNP, PolyPhen-1/-2, SIFT, SNAP, nsSNPAnalyser, PANTHER) to provide a more accurate and robust alternative to the predictions based on accession integrated tools and weighted by the method-specific confidence scores⁴⁴. Even though these softwares based their predictions on mammal (mostly humans) databases (no such plant-specific predictors exist), they enabled the classification of amino acid variations found along the eIFiso4E protein for *Armeniaca*, *Amygdalus* and *Persica* accessions to select variable haplotypes for testing PPV infection in the greenhouse.

Phenotypic evaluation. Once the selection of accessions with variable haplotypes was established, phenotypic evaluation of PPV resistance was performed in a high confinement greenhouse following the protocol described in¹⁴. We used the same PPV Marcus isolate (PPV M20), maintained on GF305 indicator seedlings, for all tests because it is infecting equally and successfully accessions of the *Armeniaca*, *Amygdalus* and *Persica* groups, which is not the case of the other strains (D Dideron, C Cherry etc....)¹⁸. Indeed, although PPV M and PPV D are the most common and among them, PPV-D is considered as the most epidemiologically competitive and the most widespread worldwide, PPV-D isolates are less efficiently transmitted than PPV M in almond and peach¹³. Three technical replicates per accession were first inoculated with PPV M20 and then scored over three consecutive, vegetative cycles of observations with two rounds of measurements each by serological assays (ELISA). Technical replicates consist in the same accession grafted on three independent PPV-susceptible rootstocks. One vegetative cycle consists in a succession of 3 months of dormancy in a cold chamber followed by 3 months of growth in the greenhouse. To look for the presence of the virus in the leaves, viral particles were quantified by ELISA, providing optical density values (OD). When OD was at least twice higher than the OD value of the negative control (the non-infected cultivar GF305), the sample was considered as infected. In this case, a score of 1 was attributed to the sample. Otherwise, the score was 0. After each cycle, the average response score was calculated from the two ELISA measurements while at the end of the phenotyping tests, the global average score was obtained by averaging data from the three complete cycles. Accessions were considered resistant with a global score of 0. Three levels of susceptibility were then categorized with a weak ($0 < \text{score} < 0.200$), a moderate ($0.200 \leq \text{score} < 0.500$) and a high ($0.500 \leq \text{score} \leq 1$) score.

Statements. Most of the samples used in this study were collected before October 2014, in the frame of the FP7 IRSES-246795 “STONE” project. Appropriate permissions from responsible authorities for collecting and using *Prunus* samples from Central Asia, Caucasia and China were obtained by the local collaborators. The rest of the samples were kindly provided, with due authorizations, by the curators of the French INRAE Genetic Resources Centre (GRC, Bourran), the US ARS-USDA repository, the Lednice germplasm collection; further details are available on their respective databases.

Data availability

All the raw sequencing data generated during the current study were deposited in the SRA under project number ID: PRJNA918999. No voucher specimen was deposited in publicly available herbarium, however live samples are available through the National repositories: French Genetic Resources Centre, US ARS-USDA repository and Czech Horticultural repository of Lednice.

Received: 9 June 2023; Accepted: 6 September 2023

Published online: 14 September 2023

References

- Gómez, P., Rodríguez-Hernández, A. M., Moury, B. & Aranda, M. A. Genetic resistance for the sustainable control of plant virus diseases: Breeding, mechanisms and durability. *Eur. J. Plant Pathol.* **125**, 1–22. <https://doi.org/10.1007/s10658-009-9468-5> (2009).
- Fraser, R. S. S. The genetics of resistance to plant viruses. *Annu. Rev. Phytopathol.* **28**, 179–200. <https://doi.org/10.1146/annurev.py.28.090190.001143> (1990).
- Truniger, V. & Aranda, M. A. Recessive resistance to plant viruses. *Adv. Virus Res.* **75**, 119–159. [https://doi.org/10.1016/S0065-3527\(09\)07504-6](https://doi.org/10.1016/S0065-3527(09)07504-6) (2009).
- Harris, C. J., Slootweg, E. J., Govere, A. & Baulcombe, D. C. Stepwise artificial evolution of a plant disease resistance gene. *Proc. Natl. Acad. Sci.* **110**, 21189–21194. <https://doi.org/10.1073/pnas.1311134110> (2013).
- Le Gall, O., Aranda, M. A. & Caranta, C. Plant resistance to viruses mediated by translation initiation factors. In *Recent Advances in Plant Virology* (eds Caranta, C. et al.) 177–194 (Caister Academic Press, 2011).
- Wang, A. M. & Krishnaswamy, S. Eukaryotic translation initiation factor 4E-mediated recessive resistance to plant viruses and its utility in crop improvement. *Mol. Plant Pathol.* **13**, 795–803. <https://doi.org/10.1111/j.1364-3703.2012.00791.x> (2012).
- Charron, C. et al. Natural variation and functional analyses provide evidence for co-evolution between plant eIF4E and potyviral VPg. *Plant J.* **54**, 56–68. <https://doi.org/10.1111/j.1365-3113X.2008.03407.x> (2008).
- Ibiza, V. P., Canizares, J. & Nuez, F. EcoTILLING in *Capsicum* species: Searching for new virus resistances. *BMC Genomics* **11**, 631. <https://doi.org/10.1186/1471-2164-11-631> (2010).
- Jeong, H. J. et al. A survey of natural and ethyl methane sulfonate-induced variations of eIF4E using high-resolution melting analysis in *Capsicum*. *Mol. Breed.* **29**, 349–360. <https://doi.org/10.1007/s11032-011-9550-5> (2012).
- Nieto, C. et al. EcoTILLING for the identification of allelic variants of melon eIF4E, a factor that controls virus susceptibility. *BMC Plant Biol.* **7**, 34. <https://doi.org/10.1186/1471-2229-7-34> (2007).
- Poulicard, N., Pacios, L. F., Gallois, J. L., Piñero, D. & Garcia-Arenal, F. Human management of a wild plant modulates the evolutionary dynamics of a gene determining recessive resistance to virus infection. *Plos Genet.* **12**, e1006214. <https://doi.org/10.1371/journal.pgen.1006214> (2016).
- Cambra, M., Capote, N., Myrta, A. & Llácer, G. Plum pox virus and the estimated costs associated with sharka disease. *EPPO Bull.* **36**, 202–204 (2006).
- Rimbaud, L. et al. Sharka epidemiology and worldwide management strategies: Learning lessons to optimize disease control in perennial plants. *Annu. Rev. Phytopathol.* **53**, 357–378. <https://doi.org/10.1146/annurev-phyto-080614-120140> (2015).
- Decroocq, S. et al. New insights into the history of domesticated and wild apricots and its contribution to plum pox virus resistance. *Mol. Ecol.* **25**, 4712–4729. <https://doi.org/10.1111/mec.13772> (2016).
- Pascal, T., Kervella, J., Pfeiffer, F. G., Sauge, M. H. & Esmenjaud, D. Evaluation of the interspecific progeny *Prunus persica* cv Summergrand x *Prunus davidiana* for disease resistance and some agronomic features. *Acta Hort.* **465**, 185–192. <https://doi.org/10.17660/ActaHortic.1998.465.21> (1998).
- Pascal, T., Pfeiffer, F. & Kervella, J. Preliminary observations on the resistance to sharka in peach and related species. *Acta Hort.* **592**, 699–704. <https://doi.org/10.17660/ActaHortic.2002.592.98> (2002).
- Rubio, M., Martínez-Gómez, P., Dicenta, F. & Weber, W. E. Resistance of almond cultivars to plum pox virus (sharka). *Plant Breed.* **122**, 462–464. <https://doi.org/10.1046/j.1439-0523.2003.00872.x> (2003).
- Decroocq, S. et al. Selecting with markers linked to the PPVres major QTL is not sufficient to predict resistance to plum pox virus (PPV) in apricot. *Tree Genet. Genomes* **10**, 1161–1170. <https://doi.org/10.1007/s11295-014-0750-0> (2014).
- Zhebentyayeva, T., Reighard, G., Krška, B., Gorina, V. M. & Abbott, A. G. Origin of resistance to plum pox virus in apricot: Microsatellite (SSR) data analysis. *Plant Prot. Sci.* **38**, 117–121. <https://doi.org/10.17221/10333-PPS> (2002).
- Decroocq, V. et al. Multiple resistance traits control PPV infection in *Arabidopsis thaliana*. *Mol. Plant-Microbe Interact.* **19**, 541–549. <https://doi.org/10.1094/MPMI-19-0541> (2006).
- Nicaise, V. et al. Coordinated and selective recruitment of eIF4E and eIF4G factors for potyvirus infection in *Arabidopsis thaliana*. *FEBS Lett.* **581**, 1041–1046. <https://doi.org/10.1016/j.febslet.2007.02.007> (2007).
- Robaglia, C. & Caranta, C. Translation initiation factors: A weak link in plant RNA virus infection. *Trends Plant Sci.* **11**, 40–44. <https://doi.org/10.1016/j.tplants.2005.11.004> (2006).
- Nicaise, V. et al. The eukaryotic translation initiation factor 4E controls lettuce susceptibility to the potyvirus *Lettuce mosaic virus*. *Plant Physiol.* **132**, 1272–1282. <https://doi.org/10.1104/pp.102.017855> (2003).
- Wang, X. et al. Silencing of the Host Factor eIF(iso)4E Gene Confers plum pox virus resistance in plum. *PLoS ONE* **8**(1), e50627. <https://doi.org/10.1371/journal.pone.0050627> (2013).
- Rubio, J. et al. Silencing of one copy of the translation initiation factor eIFiso4G in Japanese plum (*Prunus salicina*) impacts susceptibility to plum pox virus (PPV) and small RNA production. *BMC Plant Biol.* **19**, 440. <https://doi.org/10.1186/s12870-019-2047-9> (2019).
- Cao, K. et al. Comparative population genomics identified genomic regions and candidate genes associated with fruit domestication traits in peach. *Plant Biotechnol. J.* **17**, 1954–1970. <https://doi.org/10.1111/pbi.13112> (2019).
- Groppi, A. et al. Population genomics of apricots unravels domestication history and adaptive events. *Nat. Commun.* **12**, 3956. <https://doi.org/10.1038/s41467-021-24283-6> (2021).
- Marandel, G., Pascal, T., Candresse, T. & Decroocq, V. The quantitative resistance to plum pox virus in *Prunus davidiana* P1908 is tightly linked to different components of the eukaryotic translation initiation complex. *Plant. Pathol.* **58**, 425–435. <https://doi.org/10.1111/j.1365-3059.2008.02012.x> (2009).
- García-Ruiz, H. Susceptibility genes to plant viruses. *Viruses* **10**, 484. <https://doi.org/10.3390/v10090484> (2018).
- Decroocq, V. et al. Analogues of virus resistance genes map to QTLs for resistance to sharka disease in *Prunus davidiana*. *Mol. Genet. Genomics* **272**, 680–689. <https://doi.org/10.1007/s00438-004-1099-0> (2005).
- Vilanova, S., Romero, C., Abbott, A. G., Llácer, G. & Badenes, M. L. An apricot (*Prunus armeniaca* L.) F2 progeny linkage map based on SSR and AFLP markers, mapping plum pox virus resistance and self-incompatibility traits. *Theor. Appl. Genet.* **107**, 239–247. <https://doi.org/10.1007/s00122-003-1243-y> (2003).
- Mariette, S. et al. Genome-wide association links candidate genes to resistance to plum pox virus in apricot (*Prunus armeniaca*). *New Phytol.* **209**, 773–784. <https://doi.org/10.1111/nph.13627> (2016).
- Zuriaga, E. et al. Genomic analysis reveals MATH gene(s) as candidate(s) for plum pox virus (PPV) resistance in apricot (*Prunus armeniaca* L.). *Mol. Plant Pathol.* **14**, 663–677. <https://doi.org/10.1111/mpp.12037> (2013).
- Rodríguez-Hernández, A. M. et al. Melon RNA interference (RNAi) lines silenced for Cm-eIF4E show broad virus resistance. *Mol. Plant Pathol.* **13**, 755–763. <https://doi.org/10.1111/j.1364-3703.2012.00785.x> (2012).
- Velasco, D., Hough, J., Aradhya, M. & Ross-Ibarra, J. Evolutionary genomics of peach and almond domestication. *G3 Genes Genomes Genet.* **6**, 3985–3993. <https://doi.org/10.1534/g3.116.032672> (2016).
- Barkley, N. A. & Wang, M. L. Application of TILLING and EcoTILLING as reverse genetic approaches to elucidate the function of genes in plants and animals. *Curr. Genomics* **9**, 212–226. <https://doi.org/10.2174/138920208784533656> (2008).

37. Hofinger, B. J. *et al.* An exceptionally high nucleotide and haplotype diversity and a signature of positive selection for the *eIF4E* resistance gene in barley are revealed by allele mining and phylogenetic analyses of natural populations. *Mol. Ecol.* **20**, 3653–3668. <https://doi.org/10.1111/j.1365-294X.2011.05201.x> (2011).
38. Excoffier, L. & Lischer, H. E. L. Arlequin suite ver 3.5: A new series of programs to perform population genetics analyses under Linux and Windows. *Mol. Ecol. Resour.* **10**, 564–567. <https://doi.org/10.1111/j.1755-0998.2010.02847.x> (2010).
39. Hall, T. A. BioEdit: A user-friendly biological sequence alignment editor and analysis program for Windows 95/98/NT. *Nucl. Acids Symp. Ser.* **41**, 95–98 (1999).
40. Librado, P. & Rozas, J. DnaSP v5: A software for comprehensive analysis of DNA polymorphism data. *Bioinformatics* **25**, 1451–1452. <https://doi.org/10.1093/bioinformatics/btp187> (2009).
41. Weaver, S. *et al.* Datamonkey 20: A modern web application for characterizing selective and other evolutionary processes. *Mol. Biol. Evol.* **35**, 773–777. <https://doi.org/10.1093/molbev/msx335> (2018).
42. Capriotti, E., Altman, R. B. & Bromberg, Y. Collective judgment predicts disease-associated single nucleotide variants. *BMC Genomics* **14**, S2. <https://doi.org/10.1186/1471-2164-14-S3-S2> (2013).
43. Pejaver, V. *et al.* Inferring the molecular and phenotypic impact of amino acid variants with MutPred2. *Nat. Commun.* **11**, 5918. <https://doi.org/10.1038/s41467-020-19669-x> (2020).
44. Bendl, J. *et al.* PredictSNP: Robust and accurate consensus classifier for prediction of disease-related mutations. *PLoS Comput. Biol.* **10**, e1003440. <https://doi.org/10.1371/journal.pcbi.1003440> (2014).
45. Bortiri, E. *et al.* Phylogeny and systematics of *Prunus* (Rosaceae) as determined by sequence analysis of ITS and the chloroplast *trnL-trnF* spacer DNA. *Syst. Bot.* **26**, 797–807, 711 <https://doi.org/10.1043/0363-6445-26.4.797> (2001).
46. Rehder, A. *A Manual of Cultivated Trees and Shrubs* 2nd edn. (MacMillan Publishing Company, 1940).
47. Mason, S. C. The pubescent-fruited species of *Prunus* of the southwestern states. *J. Agric. Res.* **1**, 147–149 (1913).

Acknowledgements

The authors wish to pay their respects to the late Dr Raul Karychev, former scientist of the Kazakh Research Institute of Horticulture and Viticulture (Almaty) who helped tremendously to initiate this work and did not have the chance to see its completion, even though he was an important contributor to this project.

We acknowledge the European FP7 IRSES-246795 “STONE”, the ANR-13-KBBE-0006 “COBRA” and the PRIMA FREECLIMB (# 1813-2) grants. S.L. was recipient of a Chinese Scholarship Council PhD grant. V.D. and S.L. thank the French Embassy in Beijing for accommodation and research support in China (Xu Guangqi program 2016–2018) and the Research Federation on Integrative Biology and Ecology of Bordeaux University for a travel grant. The authors wish to acknowledge all the people who helped in collecting the samples. We thank the curators of the French Genetic Resources Centre (Marine Delmas, INRAE Bourran), of the US ARS-USDA repository (John Preece) and of the Czech Horticultural repository of Lednice. We acknowledge the good and efficient care of the plants at the UMR BFP (INRAE) by Jean-Philippe Eyquard and Pascal Briard. We also thank Drs Tatiana Giraud (ESE, CNRS-Univ. Paris Saclay) and Albert G. Abbott (Forest Health Research and Education Center, Kentucky) for their critical review, useful recommendations and proofreading of this manuscript.

Author contributions

V.D. and D.T. conceived and designed the experiments. D.T., J.F.A. extracted RNA and performed sequences analyses; D.T. and S.D. performed the statistical analyses; J.-P.E. and A.C. performed the resistance tests; S.L., W.L., G.B., A.M., T.T., T.K., B.M.A. and Z.A. provided the plant material and/or actively participated to the sampling with appropriate authorizations. V.D. coordinated the project, she wrote the paper together with D.T.

Competing interests

The authors declare no competing interests.

Additional information

Supplementary Information The online version contains supplementary material available at <https://doi.org/10.1038/s41598-023-42215-w>.

Correspondence and requests for materials should be addressed to V.D.

Reprints and permissions information is available at www.nature.com/reprints.

Publisher's note Springer Nature remains neutral with regard to jurisdictional claims in published maps and institutional affiliations.



Open Access This article is licensed under a Creative Commons Attribution 4.0 International License, which permits use, sharing, adaptation, distribution and reproduction in any medium or format, as long as you give appropriate credit to the original author(s) and the source, provide a link to the Creative Commons licence, and indicate if changes were made. The images or other third party material in this article are included in the article's Creative Commons licence, unless indicated otherwise in a credit line to the material. If material is not included in the article's Creative Commons licence and your intended use is not permitted by statutory regulation or exceeds the permitted use, you will need to obtain permission directly from the copyright holder. To view a copy of this licence, visit <http://creativecommons.org/licenses/by/4.0/>.

© The Author(s) 2023