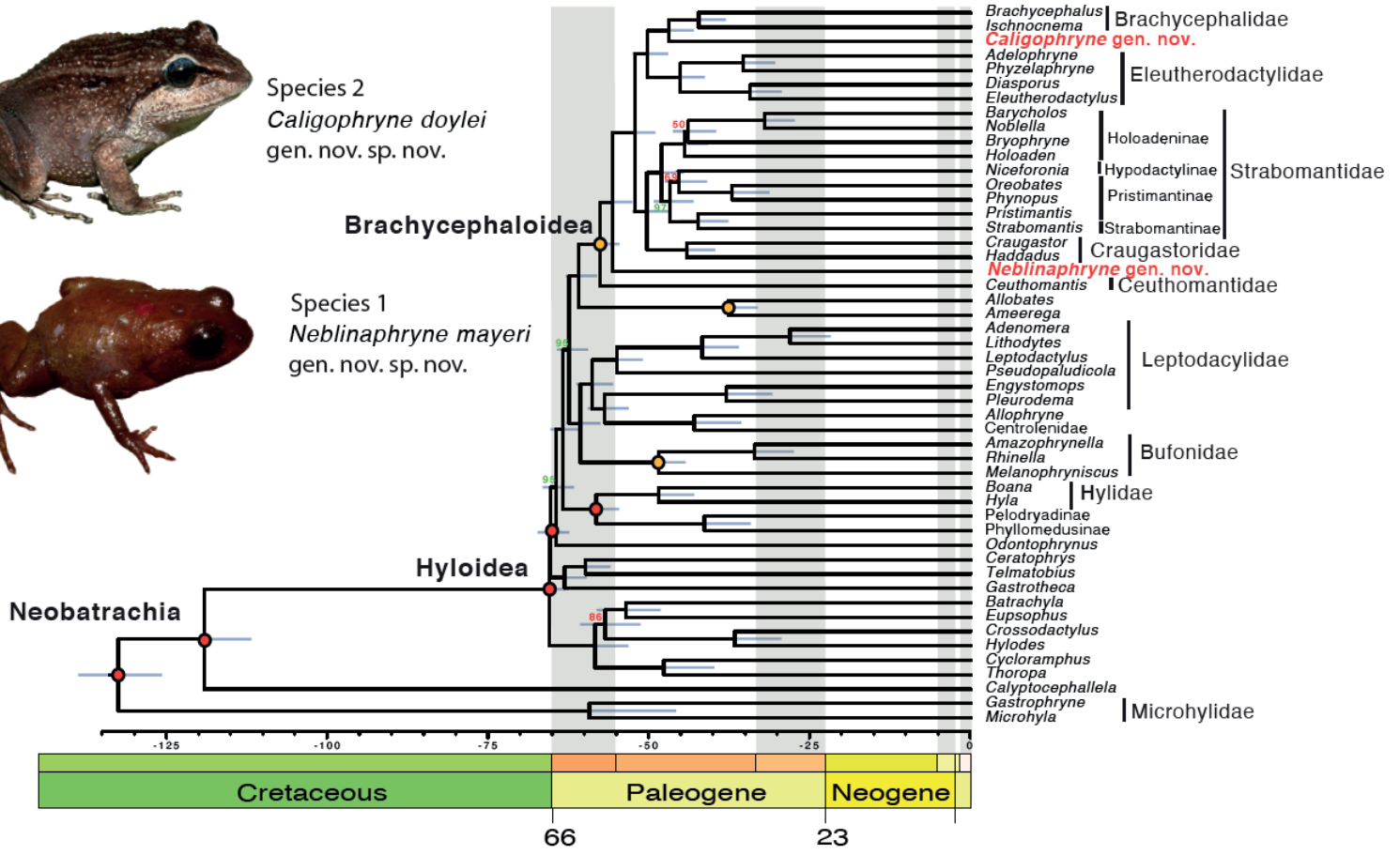




Species 2
Caligophryne doylei
gen. nov. sp. nov.



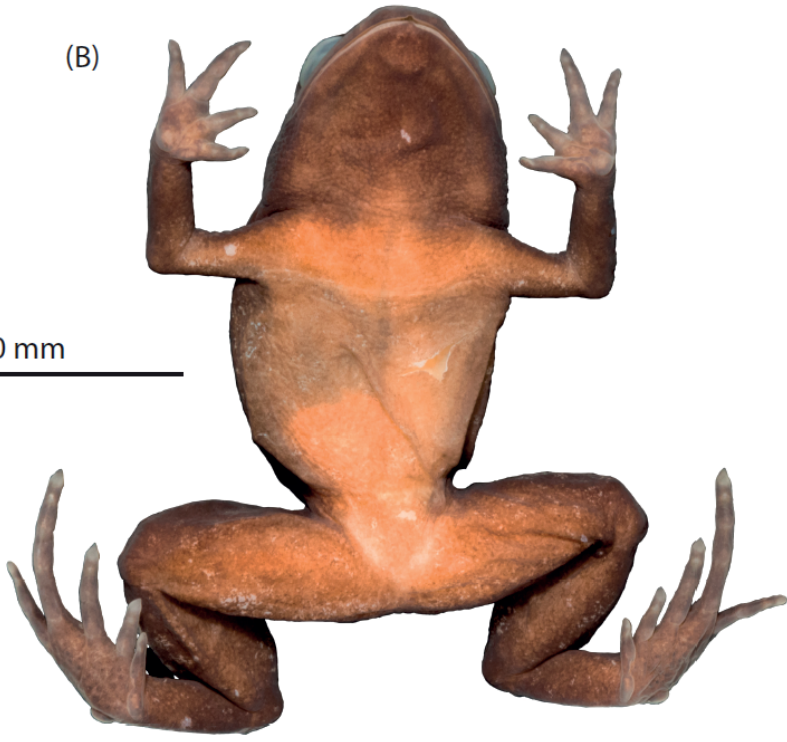
Species 1
Neblinaphryne mayeri
gen. nov. sp. nov.



(A)



(B)



10 mm



Neblinaphryne mayeri sp. nov.
MZUSP A159564 holotype
Female

1 mm



(C)



(D)



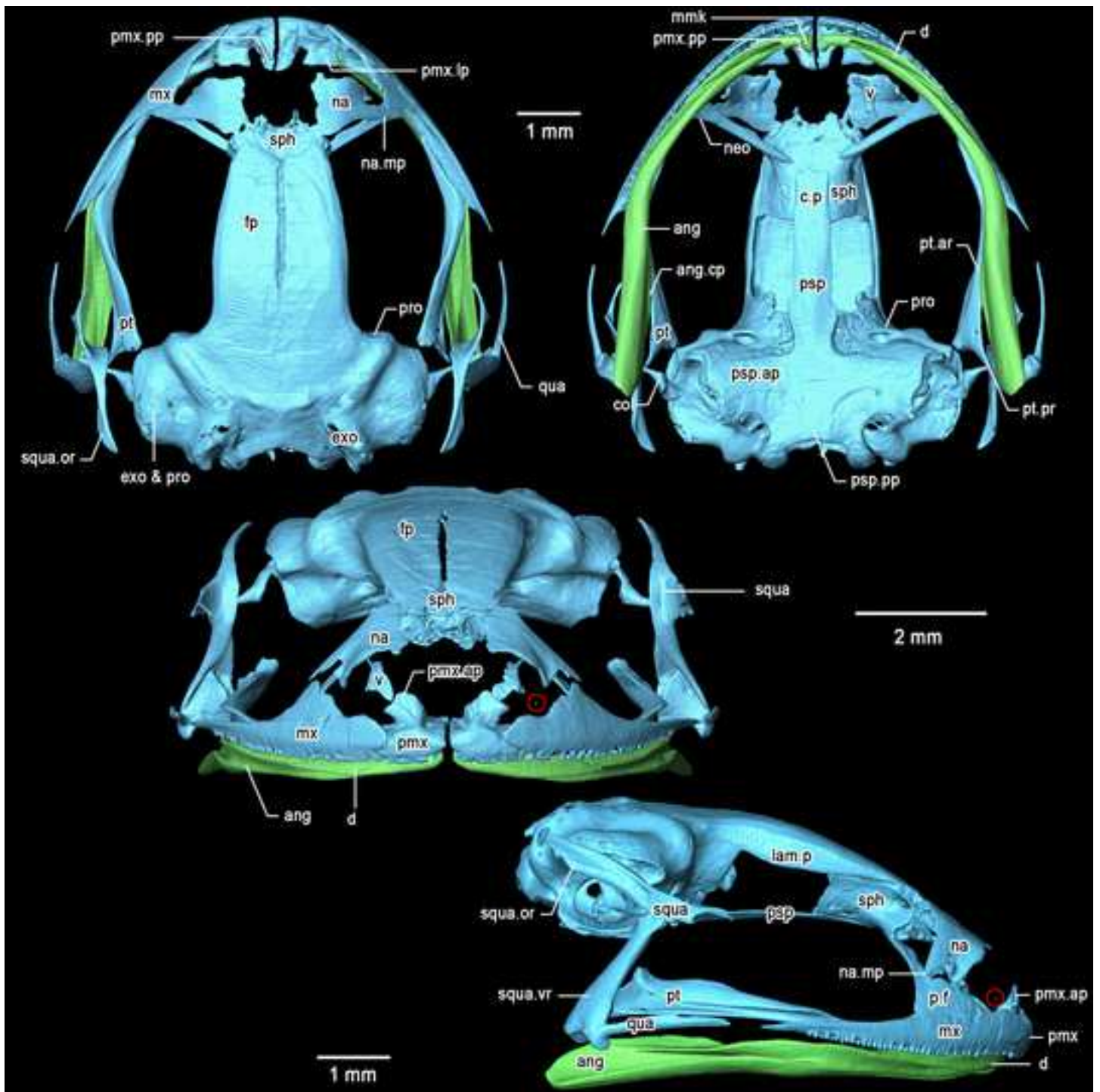
(E)

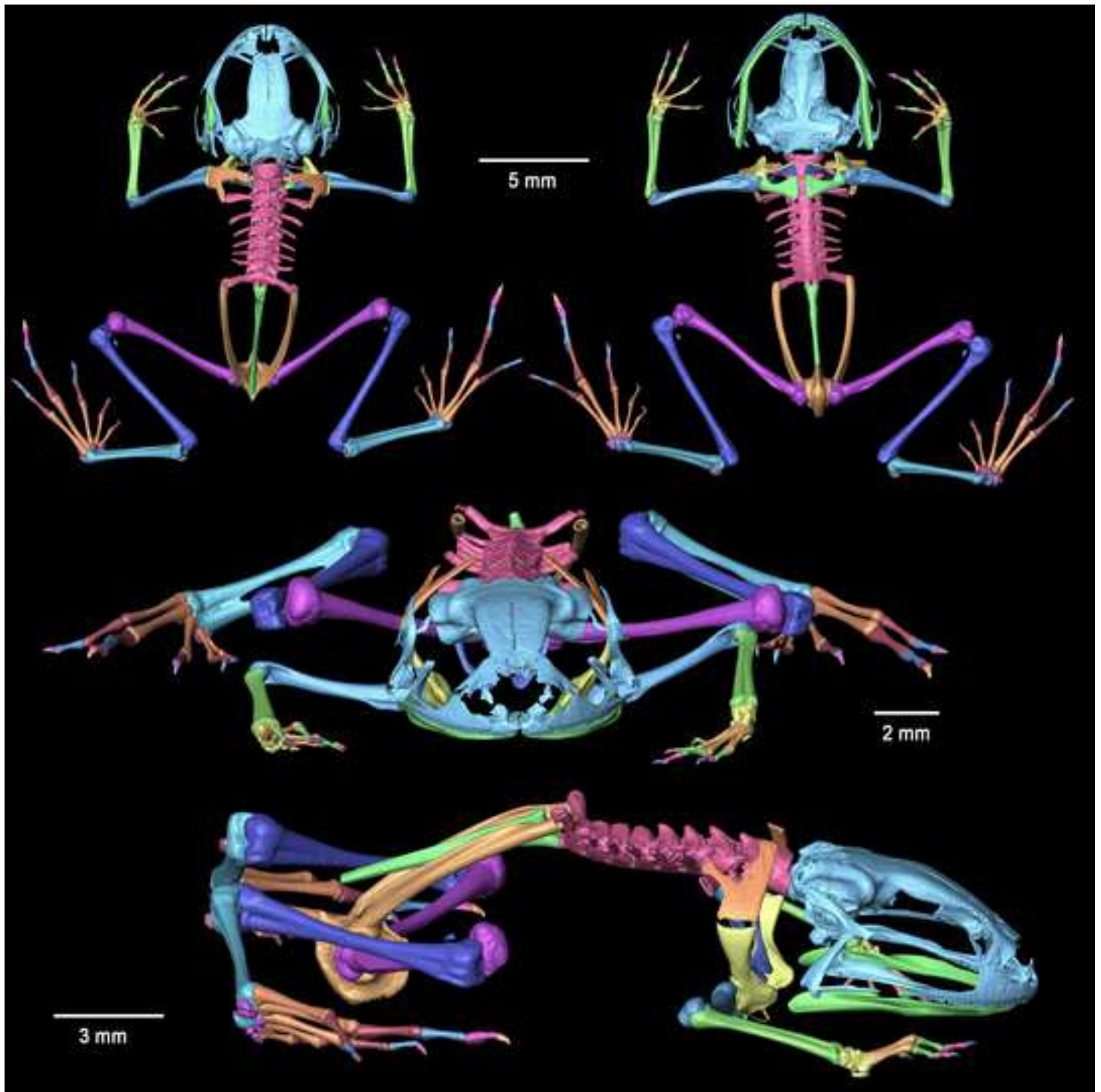


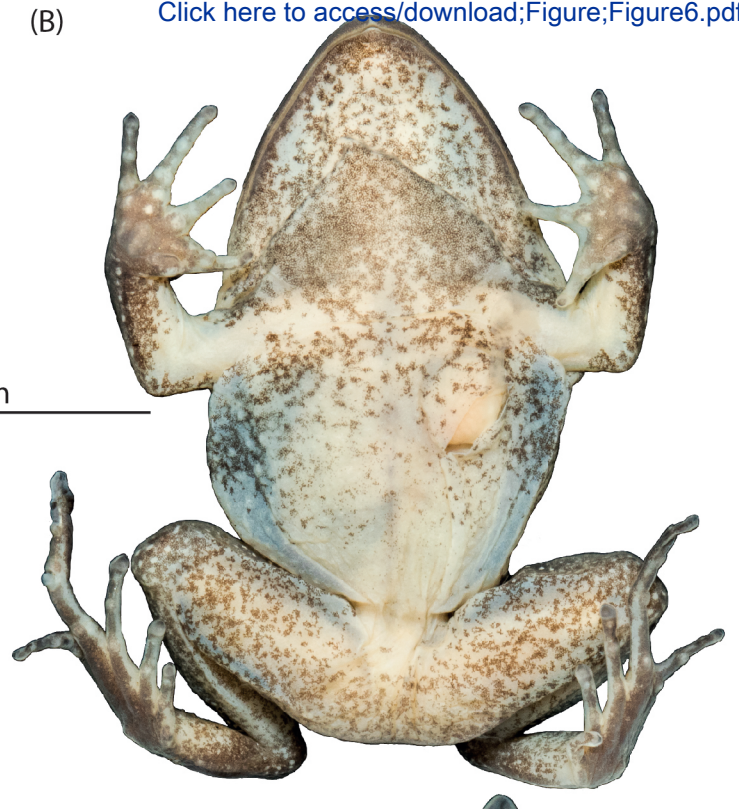
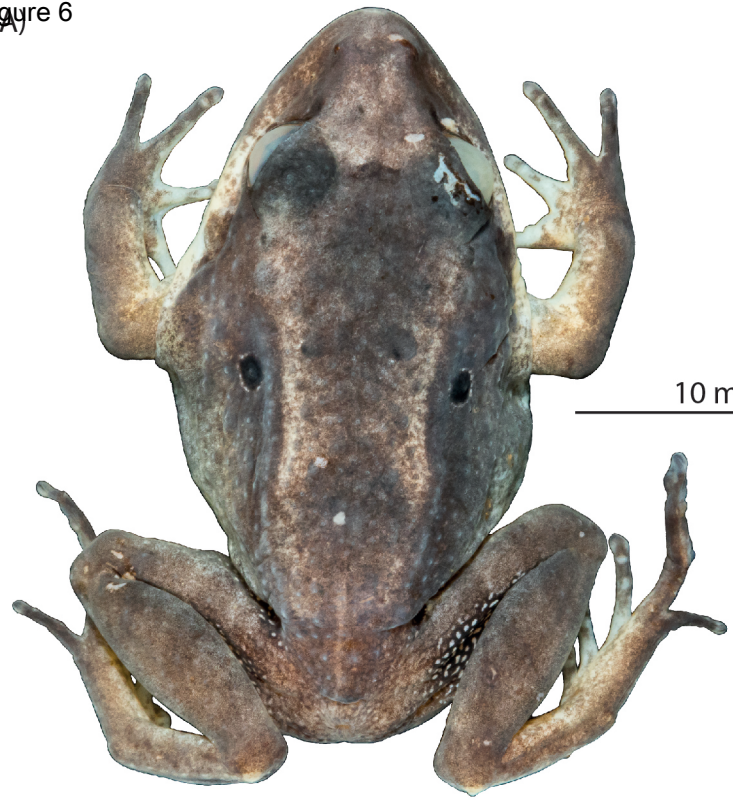
(F)



Neblinaphryne mayeri sp. nov.
MZUSP A159578 paratype
Female







Caligophryne doylei sp. nov.
MZUSP A159537 holotype
Male



