



**HAL**  
open science

## The Messinian Erosion Surface along the Eastern Sardinian Margin, Western Tyrrhenian: New Insights from Very High-Resolution Seismic Data (METYSS 4)

Romain Sylvain, Virginie Gaullier, Louise Watremez, Frank Chanier, Fabien Caroir, Fabien Graveleau, Johanna Lofi, Agnès Maillard, Françoise Sage, Isabelle Thinon, et al.

### ► To cite this version:

Romain Sylvain, Virginie Gaullier, Louise Watremez, Frank Chanier, Fabien Caroir, et al.. The Messinian Erosion Surface along the Eastern Sardinian Margin, Western Tyrrhenian: New Insights from Very High-Resolution Seismic Data (METYSS 4). European Geological Union, Apr 2023, Vienne, Austria. , 2023, 10.5194/egusphere-egu23-13909 . hal-04300285

**HAL Id: hal-04300285**

**<https://hal.science/hal-04300285v1>**

Submitted on 22 Nov 2023

**HAL** is a multi-disciplinary open access archive for the deposit and dissemination of scientific research documents, whether they are published or not. The documents may come from teaching and research institutions in France or abroad, or from public or private research centers.

L'archive ouverte pluridisciplinaire **HAL**, est destinée au dépôt et à la diffusion de documents scientifiques de niveau recherche, publiés ou non, émanant des établissements d'enseignement et de recherche français ou étrangers, des laboratoires publics ou privés.

# The Messinian Erosion Surface along the Eastern Sardinian Margin, Western Tyrrhenian: New Insights from Very High-Resolution Seismic Data (METYSS4)



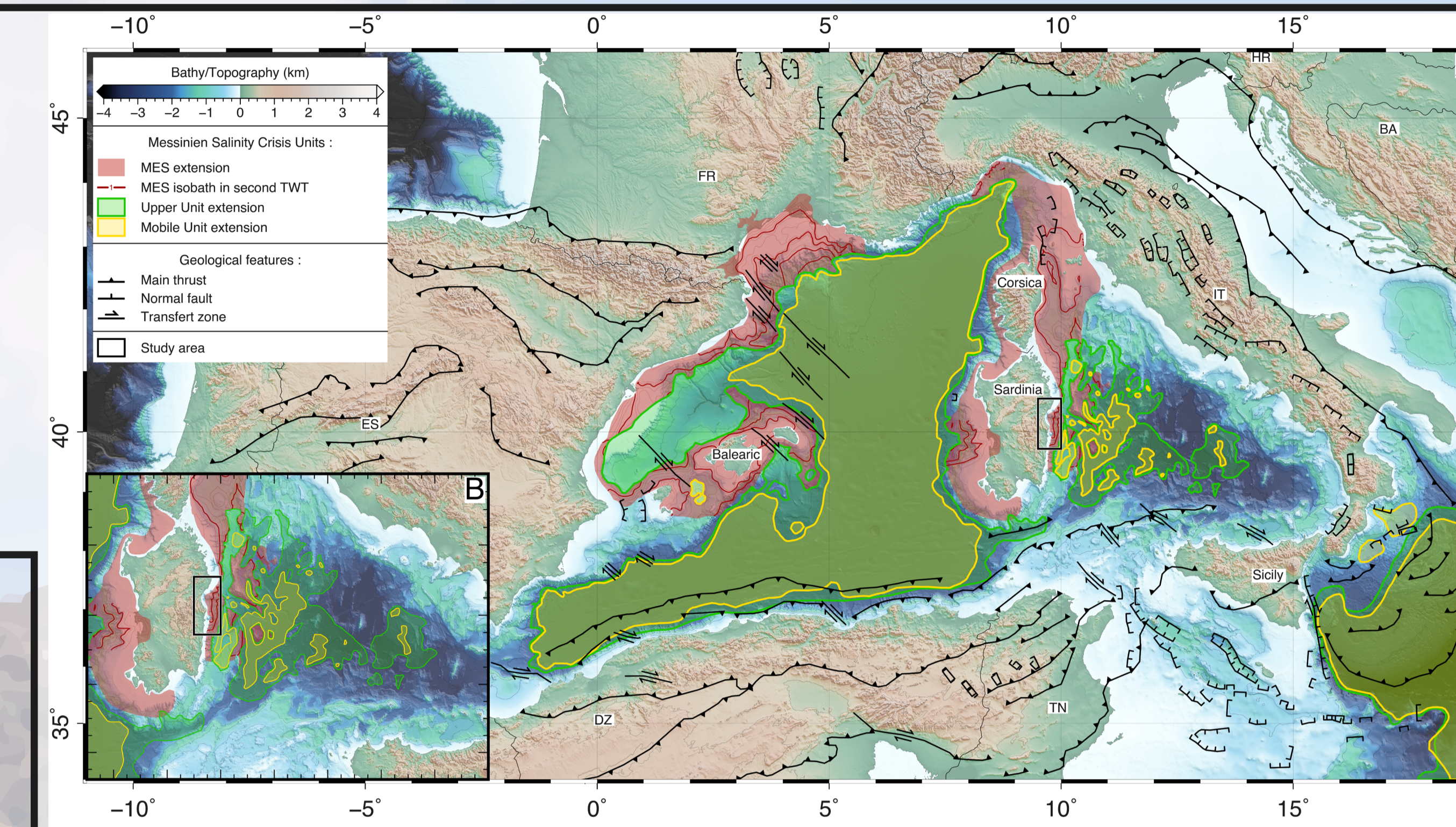
Romain SYLVAIN<sup>1</sup>, Virginie GAULLIER<sup>1</sup>, Louise WATREMEZ<sup>1</sup>, Frank CHANIER<sup>1</sup>, Fabien CAROIR<sup>2</sup>, Fabien GRAVELEAU<sup>1</sup>, Johanna LOFI<sup>3</sup>, Agnès MAILLARD<sup>4</sup>, Froïoise SAGE<sup>5</sup>, Isabelle THINON<sup>6</sup> and Gaia TRAVAN<sup>1</sup>

<sup>1</sup>Univ. Lille, CNRS, Univ. Littoral Côte d'Opale, IRD, UMR8187, LOG, Laboratoire d'Océanologie et de Géoscience, F59000 Lille, France; <sup>2</sup>Univ. Littoral Côte d'Opale, CNRS, Univ. Lille, IRD, UMR8187, LOG, Laboratoire d'Océanologie et de Géosciences, F62930 Wimereux, France; <sup>3</sup>Géosciences Montpellier, CNRS, Université de Montpellier, F34095 Montpellier, France; <sup>4</sup>Géosciences Environnement Toulouse GET, OMP, Université de Toulouse, CNRS, IRD, UMR 5563, F31400 Toulouse, France; <sup>5</sup>Université Côte d'Azur, CNRS, Observatoire de la Côte d'Azur, IRD, Géoazur, F06650 Valbonne, France; <sup>6</sup>French Geological Survey (BRGM), DGR/GBS, Orléans, France

## 1 - Introduction

The Eastern Sardinia margin consists in a hyper-extended rifted margin, located in the western Tyrrhenian Sea. This young back-arc basin (late Neogene) is related to the eastward migration of the Apennine-Calabria subduction from middle Miocene to Pliocene times (Jolivet and Faccenna, 2000; Romagny et al., 2020). The end of the rifting phase occurred during the late Tortonian. This area was affected by strong erosion during the Messinian Salinity Crisis (MSC, 5.96 - 5.33 Ma; Hsü et al., 1977) on the continental platform and slope and the deposits of evaporite series (MU and UU) associated with the sea level drop (> 1500

m) [Figure 1.A]. The Messinian Erosion Surface (MES) has already been studied in large fluvial systems (Lofi et al., 2005; Lofi, 2011, 2018; Tassy et al., 2014; Garcia-Castellanos et al., 2020) but not in small and diffuse drainage systems input like in the Gulf of Orsei (East-Sardinia) [Figure 1.B]. The MES was identified in the Cedrino Valley (Giresse et al., 2015), which flows into the Gulf and the East-Sardinia Basin (Lymer et al., 2018a, 2018b) but the relationship between onshore and offshore structures was never studied in this area. The «METYSS 4» cruise provided new very high-resolution seismic data on the continental shelf, allowing us to study this blind spot between onshore and offshore geology.



## 2 - Objectives of this study

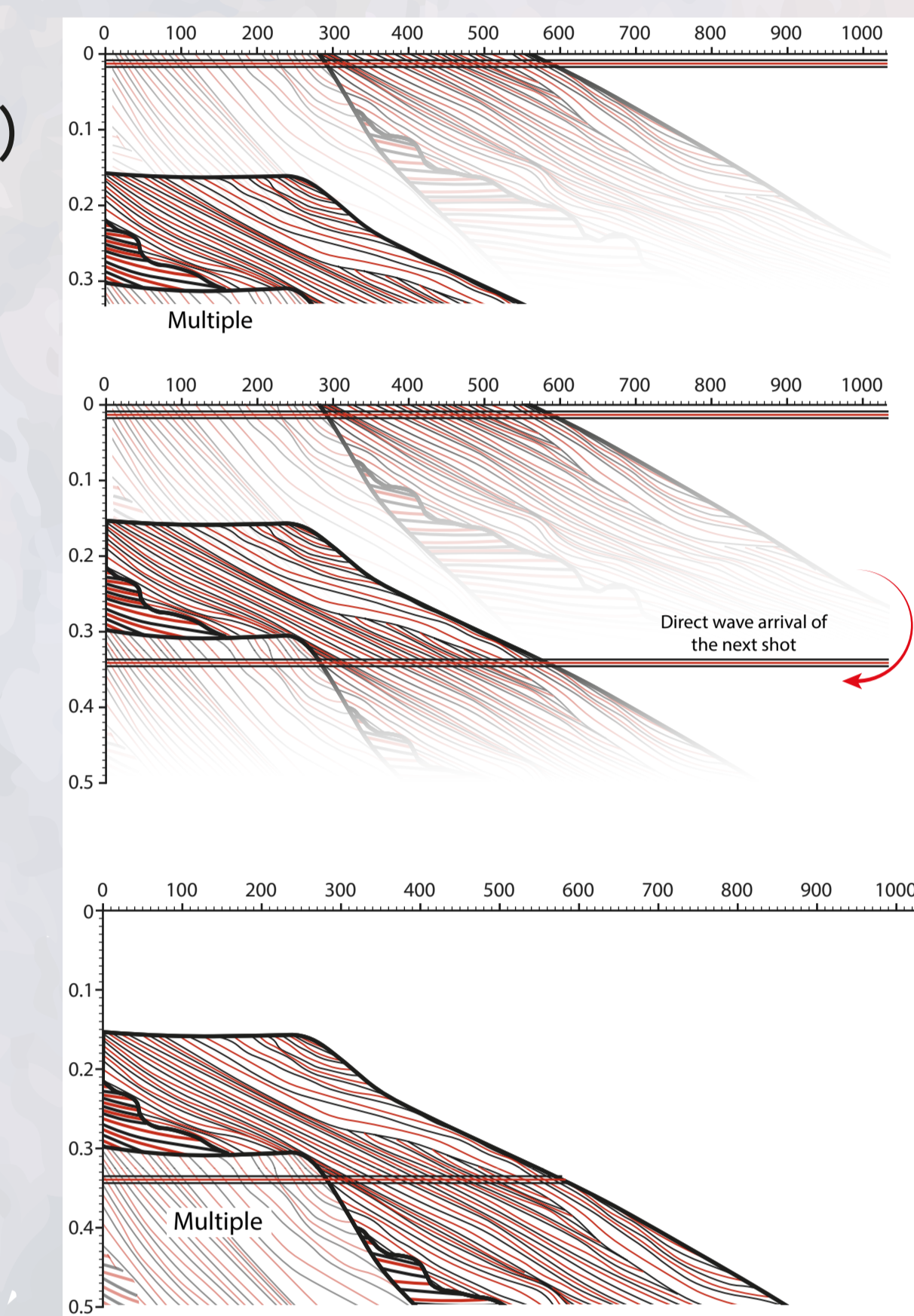
The aim of this study is to provide a new detailed map of the MES in order to: (1) characterize the Messinian fluvial network around the Gulf of Orsei; (2) compare it with the current hydrographic network; (3) establish the link between the continental MES and the offshore deepest units; (4) constrain the role of the Messinian topography and drainage network on the distribution of the Plio-Quaternary (PQ) deposits and subsequent present morphology of the margin.

## 3 - Dataset and processing

- METYSS 1 - 3 (2009 - 2011): Air-gun, multichannel (6)
  - 53 seismic profiles (2 400 km) [Figure 3.1.A]
- METYSS 4 (2019): Sparker, 300 J, single channel
  - 286 seismic profiles (2 030 km) [Figure 3.1.B]
  - Average spacing: 1 500 m

### Processing (METYSS 4):

- Bandpass filter (150, 500, 1 000, 1 500 Hz)
- Mute of the water column
- Divergence spreading correction
- Migration in the T-K domain (Stockwell, 1999)



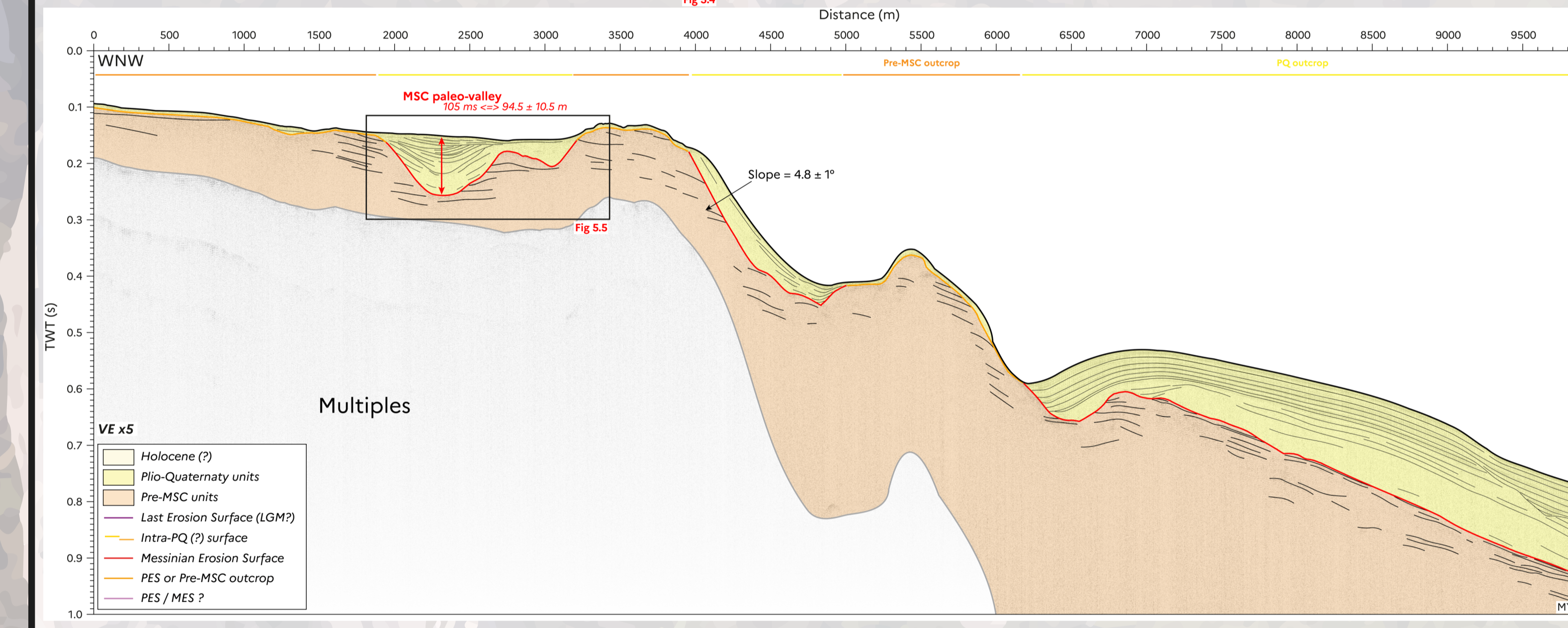
### Improving investigation depth (Figure 3.2):

- Developpement of «SeeDeeper» original method (Sylvain et al., in prep).
- Seismic trace may end where there still is signal of interest (short shot intervals : 0.333/0.533 ms) and at greater water depths (continental slope, canyons...).
- Use of the signal receive on the trace n+1 to increase investigation depth.
- Copying raw data and concatenating the copied data under raw data with a shift of 1 shot point.
- Bandpass filter (150, 500, 1000, 1500 Hz).
- Water column mute.

Figure 3.2 – Process to improve investigation depth.

## 4 - Interpretation of erosion surfaces

Figure 4.1 – Seismic profile MYS04\_140 in the Gulf of Orsei, near Cedrino river.



- MES from the continental shelf to the slope.
- Continental shelf incised by Messinian paleo-valley.

- Topographic high preserved (Figure 4.2). Characterized by a seismic facies of high amplitude, medium frequency, and semi-continuous reflectors.

- Thicker Plio-Quaternary deposits on the slope.

Figure 4.2 – Seismic profile MYS04\_205.

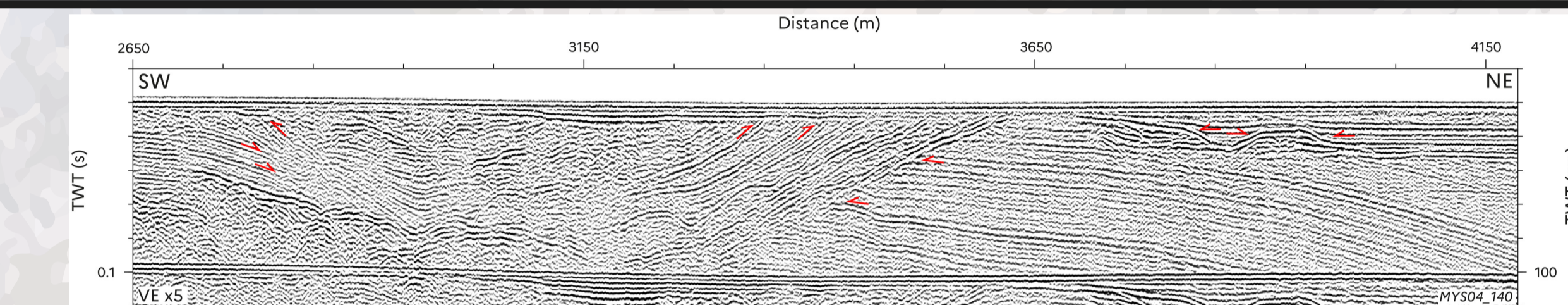


Figure 4.4 - Zoom on seismic section (Fig 4.1) without interpretation.

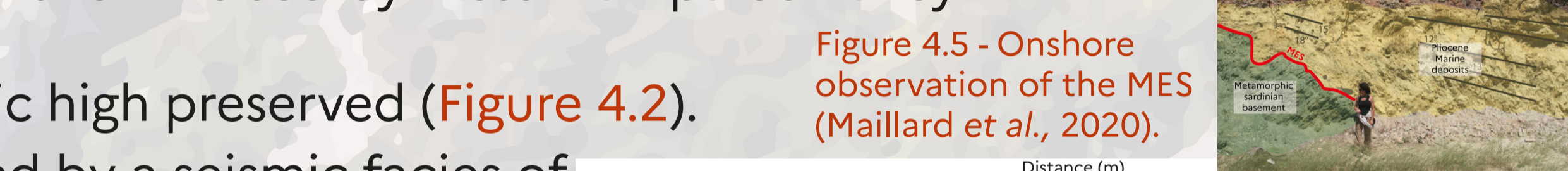


Figure 4.5 - Onshore observation of the MES (Maillard et al., 2020).

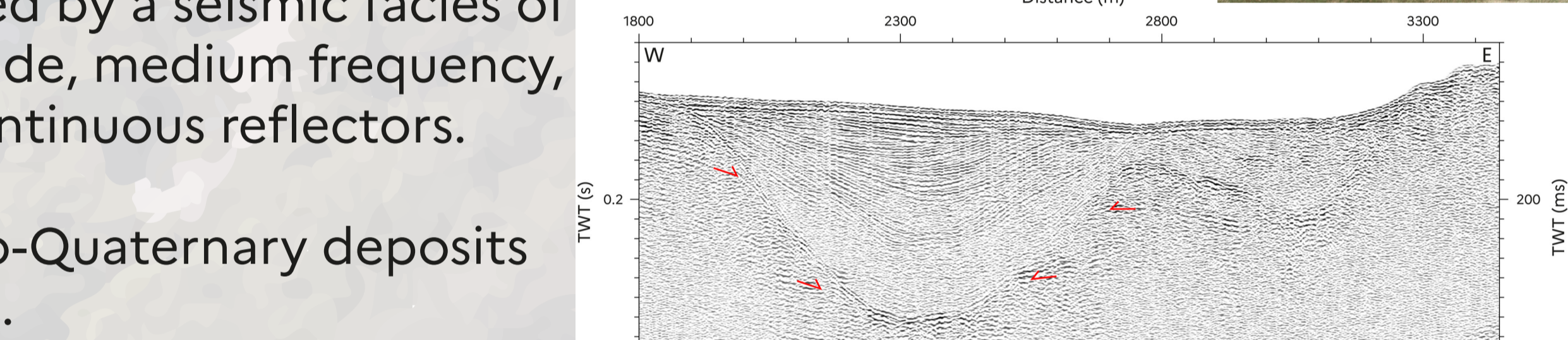


Figure 4.6 - Zoom on seismic section (Fig 4.3) without interpretation.

- MES observed from the continental shelf to the slope.
- Messinian paleo-valley.

- Topographic high preserved
- East-dipping normal faulting.

Figure 4.3 – Seismic profile MYS04\_196 in the southern most area.

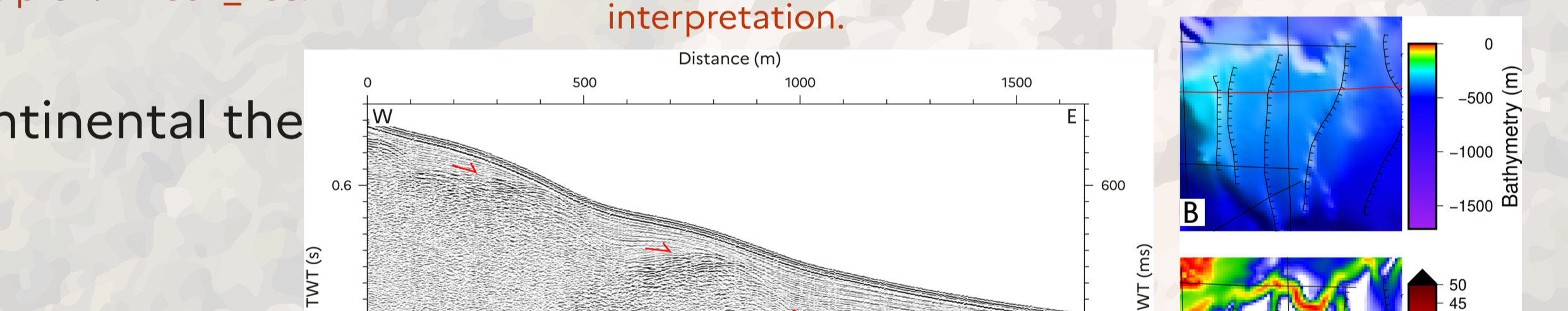
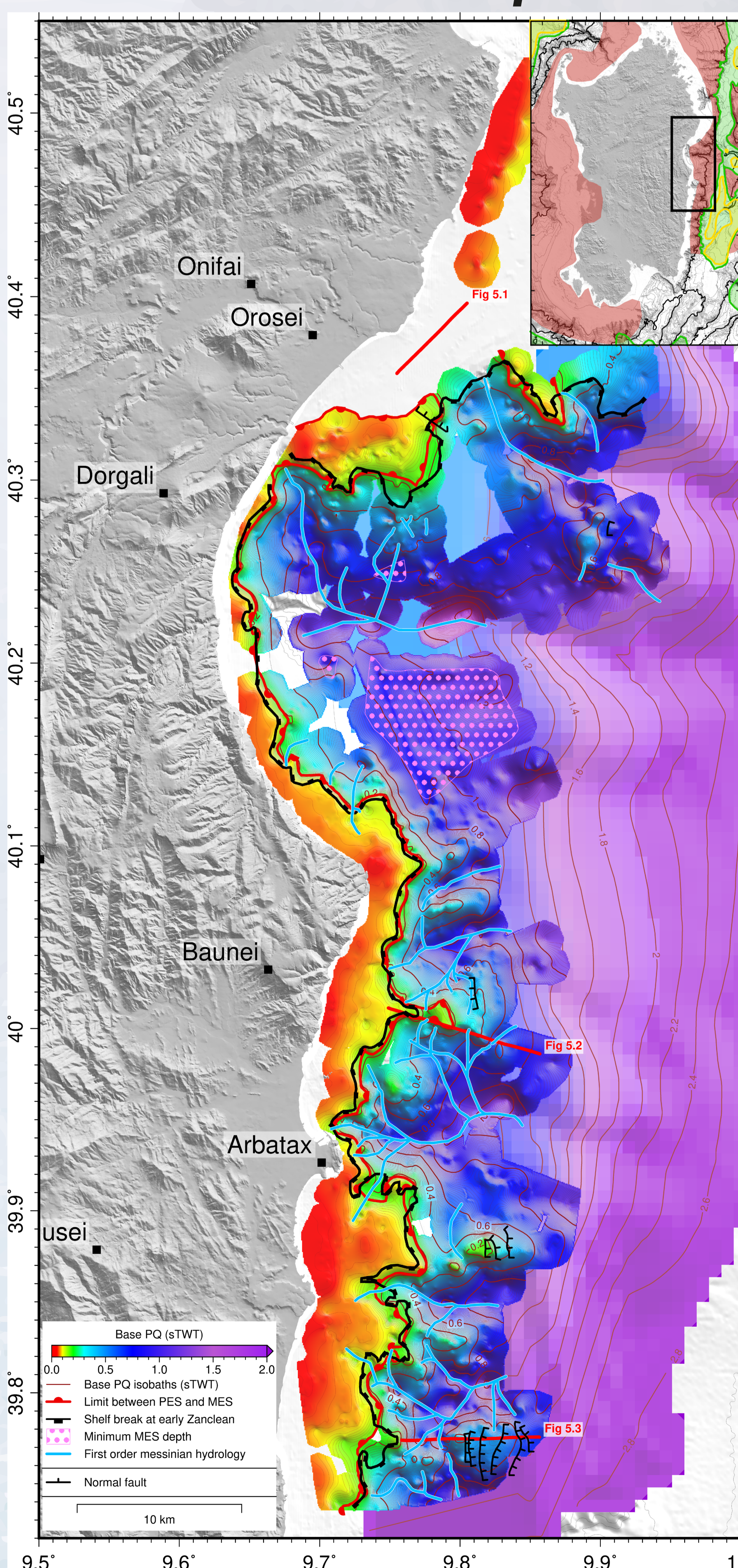


Figure 4.7 - (A) Zoom on seismic section (Fig 4.3) without interpretation. (B) Bathymetry map around the seismic section. (C) Slope map.

## 5 - Distribution of the Messinian Erosion Surface

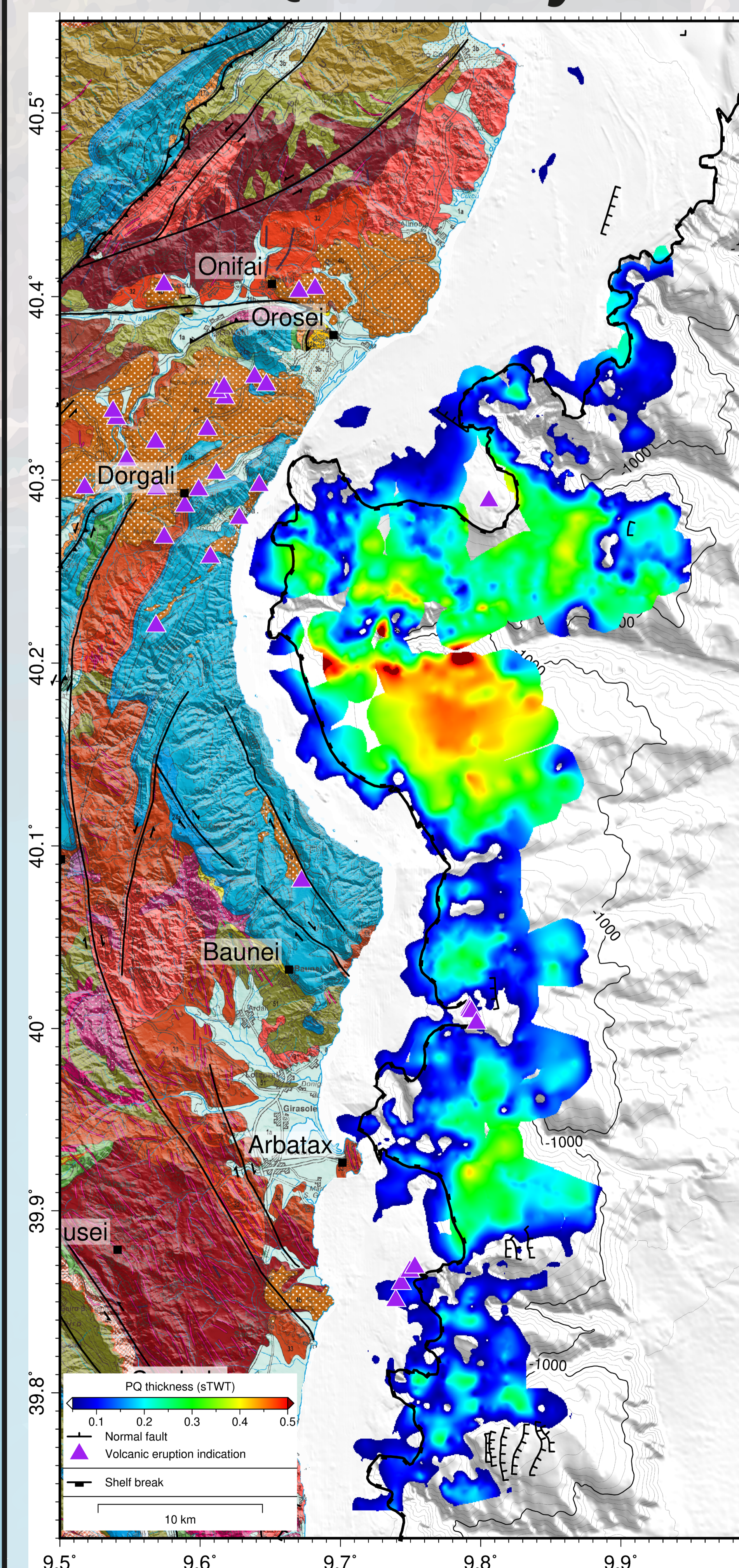


Several features are observed:

- Several messinian canyons well-identified (in blue; Figure 5).
- Major erosion surface on the continental slope (Figure 4.2 & 4.3).
  - Interpreted as the Messinian Erosion Surface and correlated to deeper surface from previous studies (Lymer et al., 2018a).
- Several erosion surfaces identified on the continental shelf (Figure 4.1).
  - Induced by either MSC or eustatism associated with glaciations.
  - We define a Polygenic Erosion Surface (PES) as the erosion surface under a thin layer of PQ or when pre-MSC units outcrop (Figure 4.2). The PES could have been first the MES that might have been reworked during later sea-level variations, because of its high position on the margin (Sylvain et al., in prep).
- East-dipping apparent normal faults cross-cutting the MES (Figure 4.3) also observed northward.
  - Post-MSC tectonic displacements (Sylvain et al., in prep).
  - 2 hypothesis :
    - (1) North-South regional crustal normal fault inherited from the rifting phase and post-rift reactivated.
    - (2) Local vertical movement (gravity).

Figure 5 – Detailed map of the Messinian Erosion Surface on the Eastern Sardinia continental shelf and slope. The previous MES map from (Lymer et al., 2018) is represented by only annotated contour and lower resolution grid.

## 6 - Plio-Quaternary sediments deposits and volcanism



### volcanism

- Holocene
- Pliocene - Marine deposits
- Quaternary basalt flow (2.75 - 2.5 Ma)
- Jurassic - Limestone
- Sardinia basement - Granit or Metamorphic

• From the seismic interpretation, we propose a Plio-Quaternary sedimentary thickness map on the upper part of the Eastern Sardinian continental slope (Figure 6).

• PQ deposits mostly located on the continental slope (Figure 4.2 & Figure 6) but the shelf break on the interfluvial and the sides of the canyons (Figure 6).

• Thicker deposits on the right flank of the Orsei Canyon. This area could be influenced by :
 

- Southward marine currents.
- More sediment inputs from the Cedrino River.
- Canyon/channel levee.
- Morphology of the Orsei Gulf and occurrence of the emerged calcareous cliff.

• Offshore Arbatax, no significant PQ deposits → pre-MSC units outcrop.
 

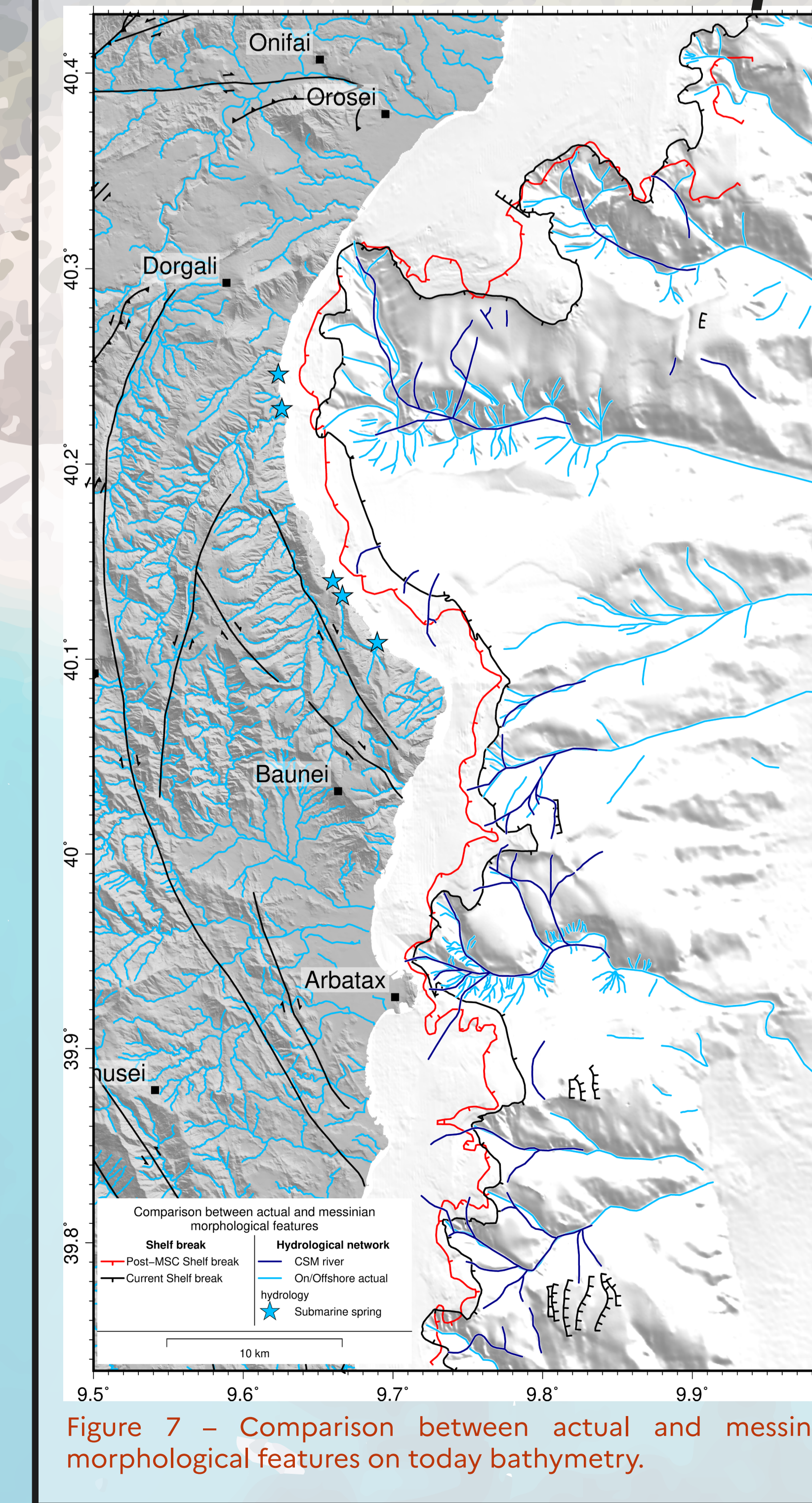
- Low sedimentation rate since the MSC (maximum average rate: 90-100 m/Ma). Consistent with previous studies on the Eastern-Sardinia Basin (30-200 m/Ma; Giresse et al., 2014).

• Several volcanic centers offshore identified in front of the volcanism outcrop on land, near the coastline.
 

- Correlated by global orientation (N-S to NE-SW) as the alkaline volcanic, onshore in the Gulf of Orsei dated late Pliocene 2.75 - 2.5 Ma in age (Beccaluva et al., 1983) associated with crustal fractures (Lustrino et al., 2002).

Figure 6 – Plio-Quaternary thickness map on the Eastern Sardinia continental shelf. Geological map from (Carmignani et al., 2016). Submarine spring location from (De Waele et al., 2009; Romano et al., 2018; Nicod, 2022).

## 7 - Discussion and perspectives



• We are able to map morphological features of Messinian times (Figure 5) to compare with actual ones (Figure 7).

• Setting up of the canyons during the MSC (?).
 

- First-order MSC hydrologic network presents strong similarity to present-day.
- Arbatax and Orsei Canyon are more meandering today than during Messinian.

• We show a spatial evolution of the shelf break → progradation of the margin.
 

- Occurrence of vertical motion of the shelf off the Orsei Gulf or only filling by an important sedimentation (aggradation)?
- The Orsei Canyon is closer to the coastline now → erosional process at the head of the canyon. This could require further exploration of this area to prevent coastline erosion hazards.

• Strong similarity between present-day and Messinian submarine river suggests no important deformation at regional scale since 5 Ma. However, we can observe local indications of small amplitude tectonic deformation corresponding to small-scale displacements along normal faults.

• This study is the first step to conclude on our objectives. We are going to focus on the link between onshore observation (Giresse et al., 2015) and deepest offshore studies (Lymer et al., 2018; Maillard et al., 2020). The results will be integrated to understand at local and larger scale the tectonic framework from the opening of the Tyrrhenian basin to present deformation.

**References**

Beccaluva, G., 1983. The volcanic activity in the Gulf of Orsei (Sardinia, Italy). *Journal of Volcanology and Geothermal Energy*, 1, 1-10.

Becker, J.S., 2009. *Global Multi-Resolution Topographic Relief Database*. <http://seamless.usgs.gov/>

Carmignani, A., 2016. *Geological map of the Eastern Sardinian margin*. *Geological Magazine*, 133, 1-10.

De Waele, J.J., 2009. *Submarine spring location*. *Journal of Marine Research*, 67, 1-10.

Giresse, S., 2014. *Geological map of the Eastern Sardinian margin*. *Geological Magazine*, 131, 1-10.

Lymer, C.K., 2018. *Geological map of the Eastern Sardinian margin*. *Geological Magazine*, 135, 1-10.

Maillard, A., 2020. *Geological map of the Eastern Sardinian margin*. *Geological Magazine*, 137, 1-10.

Romagny, J., 2020. *Geological map of the Eastern Sardinian margin*. *Geological Magazine*, 137, 1-10.

Sylvain, R., 2020. *Geological map of the Eastern Sardinian margin*. *Geological Magazine*, 137, 1-10.

Tassy, P., 2014. *Geological map of the Eastern Sardinian margin*. *Geological Magazine*, 131, 1-10.

Thinon, I., 2016. *Geological map of the Eastern Sardinian margin*. *Geological Magazine*, 133, 1-10.

Lymer, C.K., 2018. *Geological map of the Eastern Sardinian margin*. *Geological Magazine*, 135, 1-10.

Maillard, A., 2020. *Geological map of the Eastern Sardinian margin*. *Geological Magazine*, 137, 1-10.

Romagny, J., 2020. *Geological map of the Eastern Sardinian margin*. *Geological Magazine*, 137, 1-10.

Sylvain, R., 2020. *Geological map of the Eastern Sardinian margin*. *Geological Magazine*, 137, 1-10.

Tassy, P., 2014. *Geological map of the Eastern Sardinian margin*. *Geological Magazine*, 131, 1-10.

Thinon, I., 2016. *Geological map of the Eastern Sardinian margin*. *Geological Magazine*, 133, 1-10.

Lymer, C.K., 2018. *Geological map of the Eastern Sardinian margin*. *Geological Magazine*, 135, 1-10.

Maillard, A., 2020. *Geological map of the Eastern Sardinian margin*. *Geological Magazine*, 137, 1-10.

Romagny, J., 2020. *Geological map of the Eastern Sardinian margin*. *Geological Magazine*, 137, 1-10.

Sylvain, R., 2020. *Geological map of the Eastern Sardinian margin*. *Geological Magazine*, 137, 1-10.

Tassy, P., 2014. *Geological map of the Eastern Sardinian margin*. *Geological Magazine*, 131, 1-10.

Thinon, I., 2016. *Geological map of the Eastern Sardinian margin*. *Geological Magazine*, 133, 1-10.

Lymer, C.K., 2018. *Geological map of the Eastern Sardinian margin*. *Geological Magazine*, 135, 1-10.

Maillard, A., 2020. *Geological map of the Eastern Sardinian margin*. *Geological Magazine*, 137, 1-10.

Romagny, J., 2020. *Geological map of the Eastern Sardinian margin*. *Geological Magazine*, 137, 1-10.

Sylvain, R., 2020. *Geological map of the Eastern Sardinian margin*. *Geological Magazine*, 137, 1-10.

Tassy, P., 2014. *Geological map of the Eastern Sardinian margin*. *Geological Magazine*, 131, 1-10.

Thinon, I., 2016. *Geological map of the Eastern Sardinian margin*. *Geological Magazine*, 133, 1-10.

Lymer, C.K., 2018. *Geological map of the Eastern Sardinian margin*. *Geological Magazine*, 135, 1-10.

Maillard, A., 2020. *Geological map of the Eastern Sardinian margin*. *Geological Magazine*, 137, 1-10.

Romagny, J., 2020. *Geological map of the Eastern Sardinian margin*. *Geological Magazine*, 137, 1-10.

Sylvain, R., 2020. *Geological map of the Eastern Sardinian margin*. *Geological Magazine*, 137, 1-10.

Tassy, P., 2014. *Geological map of the Eastern Sardinian margin*. *Geological Magazine*, 131, 1-10.

Thinon, I., 2016. *Geological map of the Eastern Sardinian margin*. *Geological Magazine*, 133, 1-10.

Lymer, C.K., 2018. *Geological map of the Eastern Sardinian margin*. *Geological Magazine*, 135, 1-10.

Maillard, A., 2020. *Geological map of the Eastern Sardinian margin*. *Geological Magazine*, 137, 1-10.

Romagny, J., 2020. *Geological map of the Eastern Sardinian margin*. *Geological Magazine*, 137, 1-10.

Sylvain, R., 2020. *Geological map of the Eastern Sardinian margin*. *Geological Magazine*, 137, 1-10.

Tassy, P., 2014. *Geological map of the Eastern Sardinian margin*. *Geological Magazine*, 131, 1-10.

Thinon, I., 2016. *Geological map of the Eastern Sardinian margin*. *Geological Magazine*, 133, 1-10.

Lymer, C.K., 2018. *Geological map of the Eastern Sardinian margin*. *Geological Magazine*, 135, 1-10.

Maillard, A., 2020. *Geological map of the Eastern Sardinian margin*. *Geological Magazine*, 137, 1-10.

Romagny, J., 2020. *Geological map of the Eastern Sardinian margin*. *Geological Magazine*, 137, 1-10.

Sylvain, R., 2020. *Geological map of the Eastern Sardinian margin*. *Geological Magazine*, 137, 1-10.

Tassy, P., 2014. *Geological map of the Eastern Sardinian margin*. *Geological Magazine*, 131, 1-10.

Thinon, I., 2016. *Geological map of the Eastern Sardinian margin*. *Geological Magazine*, 133, 1-10.

Lymer, C.K., 2018. *Geological map of the Eastern Sardinian margin*. *Geological Magazine*, 135, 1-10.

Maillard, A., 2020. *Geological map of the Eastern Sardinian margin*. *Geological Magazine*, 137, 1-10.

Romagny, J., 2020. *Geological map of the Eastern Sardinian margin*. *Geological Magazine*, 137, 1-10.

Sylvain, R., 2020. *Geological map of the Eastern Sardinian margin*. *Geological Magazine*, 137, 1-10.

Tassy, P., 2014. *Geological map of the Eastern Sardinian margin*. *Geological Magazine*, 131, 1-10.

Thinon, I., 2016. *Geological map of the Eastern Sardinian margin*. *Geological Magazine*, 133, 1-10.

Lymer, C.K., 2018. *Geological map of the Eastern Sardinian margin*. *Geological Magazine*, 135, 1-10.

Maillard, A., 2020. *Geological map of the Eastern Sardinian margin*. *Geological Magazine*, 137, 1-10.

Romagny, J., 2020. *Geological map of the Eastern Sardinian margin*. *Geological Magazine*, 137, 1-10.

Sylvain, R., 2020. *Geological map of the Eastern Sardinian margin*. *Geological Magazine*, 137, 1-10.

Tassy, P., 2014. *Geological map of the Eastern Sardinian margin*. *Geological Magazine*, 131, 1-10.

Thinon, I., 2016. *Geological map of the Eastern Sardinian margin*. *Geological Magazine*, 133, 1-10.

Lymer, C.K., 2018. *Geological map of the Eastern Sardinian margin*. *Geological Magazine*, 135, 1-10.

Maillard, A., 2020. *Geological map of the Eastern Sardinian margin*. *Geological Magazine*, 137, 1-10.

Romagny, J., 2020. *Geological map of the Eastern Sardinian margin*. *Geological Magazine*, 137, 1-10.

Sylvain, R., 2020. *Geological map of the Eastern Sardinian margin*. *Geological Magazine*, 137, 1-10.

Tassy, P., 2014. *Geological map of the Eastern Sardinian margin*. *Geological Magazine*, 131, 1-10.

Thinon, I., 2016. *Geological map of the Eastern Sardinian margin*. *Geological Magazine*, 133, 1-10.

Lymer, C.K., 2018. *Geological map of the Eastern Sardinian margin*. *Geological Magazine*, 135, 1-10.

Maillard, A., 2020. *Geological map of the Eastern Sardinian margin*. *Geological Magazine*, 137, 1-10.

Romagny, J., 2020. *Geological map of the Eastern Sardinian margin*. *Geological Magazine*, 137, 1-10.

Sylvain, R., 2020. *Geological map of the Eastern Sardinian margin*. *Geological Magazine*, 137, 1-10.

Tassy, P., 2014. *Geological map of the Eastern Sardinian margin*. *Geological Magazine*, 131, 1-10.

Thinon, I., 2016. *Geological map of the Eastern Sardinian margin*. *Geological Magazine*, 133, 1-10.

Lymer, C.K., 2018. *Geological map of the Eastern Sardinian margin*. *Geological Magazine*, 135, 1-10.

Maillard, A., 2020. *Geological map of the Eastern Sardinian margin*. *Geological Magazine*, 137, 1-10.

Romagny, J., 2020. *Geological map of the Eastern Sardinian margin*. *Geological Magazine*, 137, 1-10.

Sylvain, R., 2020. *Geological map of the Eastern Sardinian margin*. *Geological Magazine*, 137, 1-10.

Tassy, P., 2014. *Geological map of the Eastern Sardinian margin*. *Geological Magazine*, 131, 1-10.

Thinon, I., 2016. *Geological map of the Eastern Sardinian margin*. *Geological Magazine*, 133, 1-10.

Lymer, C.K., 2018. *Geological map of the Eastern Sardinian margin*. *Geological Magazine*, 135, 1-10.

Maillard, A., 2020. *Geological map of the Eastern Sardinian margin*. *Geological Magazine*, 137, 1-10.

Romagny, J., 2020. *Geological map of the Eastern Sardinian margin*. *Geological Magazine*, 137, 1-10.

Sylvain, R., 2020. *Geological map of the Eastern Sardinian margin*. *Geological Magazine*, 137, 1-10.

Tassy, P., 2014. *Geological map of the Eastern Sardinian margin*. *Geological Magazine*, 131, 1-10.

Thinon, I., 2016. *Geological map of the Eastern Sardinian margin*. *Geological Magazine*, 133, 1-10.

Lymer, C.K., 2018. *Geological map of the Eastern Sardinian margin*. *Geological Magazine*, 135, 1-10.

Maillard, A., 2020. *Geological map of the Eastern Sardinian margin*. *Geological Magazine*, 137, 1-10.

Romagny, J., 2020. *Geological map of the Eastern Sardinian margin*. *Geological Magazine*, 137, 1-10.

Sylvain, R., 2020. *Geological map of the Eastern Sardinian margin*. *Geological Magazine*, 137, 1-10.

Tassy, P., 2014. *Geological map of the Eastern Sardinian margin*. *Geological Magazine*, 131, 1-10.

Thinon, I., 2016. *Geological map of the Eastern Sardinian margin*. *Geological Magazine*, 133, 1-10.

Lymer, C.K., 2018. *Geological map of the Eastern Sardinian margin*. *Geological Magazine*, 135, 1-10.

Maillard, A., 2020. *Geological map of the Eastern Sardinian margin*. *Geological Magazine*, 137, 1-10.

Romagny, J., 2020. *Geological map of the Eastern Sardinian margin*. *Geological Magazine*, 137, 1-10.

Sylvain, R., 2020. *Geological map of the Eastern Sardinian margin*. *Geological Magazine*, 137, 1-10.

Tassy, P., 2014. *Geological map of the Eastern Sardinian margin*. *Geological Magazine*, 131, 1-10.

Thinon, I., 2016. *Geological map of the Eastern Sardinian margin*. *Geological Magazine*, 133, 1-10.

Lymer, C.K., 2018. *Geological map of the Eastern Sardinian margin*. *Geological Magazine*, 135, 1-10.

Maillard, A., 2020. *Geological map of the Eastern Sardinian margin*. *Geological Magazine*, 137, 1-10.

Romagny, J., 2020. *Geological map of the Eastern Sardinian margin*. *Geological Magazine*, 137, 1-10.

Sylvain, R., 2020. *Geological map of the Eastern Sardinian margin*. *Geological Magazine*, 137, 1-10.

Tassy, P., 2014. *Geological map of the Eastern Sardinian margin*. *Geological Magazine*, 131, 1-10.

Thinon, I., 2016. *Geological map of the Eastern Sardinian margin*. *Geological Magazine*, 133, 1-10.

Lymer, C.K., 2018. *Geological map of the Eastern Sardinian margin*. *Geological Magazine*, 135, 1-10.

Maillard, A., 2020. *Geological map of the Eastern Sardinian margin*. *Geological Magazine*, 137, 1-10.

Romagny, J., 2020. *Geological map of the Eastern Sardinian margin*. *Geological Magazine*, 137, 1-10.

Sylvain, R., 2020. *Geological map of the Eastern Sardinian margin*. *Geological Magazine*, 137, 1-10.

Tassy, P., 2014. *Geological map of the Eastern Sardinian margin*. *Geological Magazine*, 131, 1-10.

Thinon, I., 2016. *Geological map of the Eastern Sardinian margin*. *Geological Magazine*, 133, 1-10.

Lymer, C.K., 2018. *Geological map of the Eastern Sardinian margin*. *Geological Magazine*, 135, 1-10.

Maillard, A., 2020. *Geological map of the Eastern Sardinian margin*. *Geological Magazine*, 137, 1-10.

Romagny, J., 2020. *Geological map of the Eastern Sardinian margin*. *Geological Magazine*, 137, 1-10.

Sylvain, R., 2020. *Geological map of the Eastern Sardinian margin*. *Geological Magazine*, 137, 1-10.

Tassy, P., 2014. *Geological map of the Eastern Sardinian margin*. *Geological Magazine*, 131, 1-10.

Thinon, I., 2016. *Geological map of the Eastern Sardinian margin*. *Geological Magazine*, 133, 1-10.

Lymer, C.K., 2018. *Geological map of the Eastern Sardinian margin*. *Geological Magazine*, 135, 1-10.

Maillard, A., 2020. *Geological map of the Eastern Sardinian margin*. *Geological Magazine*, 137, 1-10.

Romagny, J., 2020. *Geological map of the Eastern Sardinian margin*. *Geological Magazine*, 137, 1-10.

Sylvain, R., 2020. *Geological map of the Eastern Sardinian margin*. *Geological Magazine*, 137, 1-10.

Tassy, P., 2014. *Geological map of the Eastern Sardinian margin*. *Geological Magazine*, 131, 1-10.

Thinon, I., 2016. *Geological map of the Eastern Sardinian margin*. *Geological Magazine*, 133, 1-10.

Lymer, C.K., 2018. *Geological map of the Eastern Sardinian margin*. *Geological Magazine*, 135, 1-10.

Maillard, A., 2020. *Geological map of the Eastern Sardinian margin*. *Geological Magazine*, 137, 1-10.

Romagny, J., 2020. *Geological map of the Eastern Sardinian margin*. *Geological Magazine*, 137, 1-10.

Sylvain, R., 2020. *Geological map of the Eastern Sardinian margin*. *Geological Magazine*, 137, 1-10.

Tassy, P., 2014. *Geological map of the Eastern Sardinian margin*. *Geological Magazine*, 131, 1-10.

Thinon, I., 2016. *Geological map of the Eastern Sardinian margin*. *Geological Magazine*, 133, 1-10.

Lymer, C.K., 2018. *Geological map of the Eastern Sardinian margin*. *Geological Magazine*, 135, 1-10.

Maillard,