



HAL
open science

Comparative analysis of PDZ-binding motifs in the diacylglycerol kinase family

Boglarka Zambo, Gergo Gogl, Bastien Morlet, Pascal Eberling, Luc Negroni, Hervé Moine, Gilles Travé

► **To cite this version:**

Boglarka Zambo, Gergo Gogl, Bastien Morlet, Pascal Eberling, Luc Negroni, et al.. Comparative analysis of PDZ-binding motifs in the diacylglycerol kinase family. *FEBS Journal*, 2023, 10.1111/febs.16994 . hal-04300168

HAL Id: hal-04300168




<https://hal.science/hal-04300168>

Submitted on 24 Nov 2023

HAL is a multi-disciplinary open access archive for the deposit and dissemination of scientific research documents, whether they are published or not. The documents may come from teaching and research institutions in France or abroad, or from public or private research centers.

L'archive ouverte pluridisciplinaire **HAL**, est destinée au dépôt et à la diffusion de documents scientifiques de niveau recherche, publiés ou non, émanant des établissements d'enseignement et de recherche français ou étrangers, des laboratoires publics ou privés.

Comparative analysis of PDZ-binding motifs in the diacylglycerol kinase family

Boglarka Zambo¹ , Gergo Gogl¹, Bastien Morlet², Pascal Eberling², Luc Negroni², Hervé Moine²  and Gilles Travé¹ 

¹ Équipe Labellisée Ligue contre le cancer, Institut de Génétique et de Biologie Moléculaire et Cellulaire (IGBMC), INSERM U1258/CNRS UMR 7104/Université de Strasbourg, Illkirch, France

² Institut de Génétique et de Biologie Moléculaire et Cellulaire (IGBMC), INSERM U1258/CNRS UMR 7104/Université de Strasbourg, Illkirch, France

Keywords

DGK; diacylglycerol kinase; interactome; PDZ domain; PDZ-binding motif

Correspondence

B. Zambo, H. Moine and G. Travé, Institut de Génétique et de Biologie Moléculaire et Cellulaire (IGBMC), INSERM U1258/CNRS UMR 7104/Université de Strasbourg, Illkirch, France

Tel: +33 (0)3 69 48 51 49 (BZ); +33 (0)3 88 65 56 78 (HM); +33 (0)3 69 48 52 02 (GT)

E-mail: zambob@igbmc.fr; moine@igbmc.fr; travegi@igbmc.fr

(Received 16 August 2023, revised 26 September 2023, accepted 31 October 2023)

doi:10.1111/febs.16994

Diacylglycerol kinases (DGKs) control local and temporal amounts of diacylglycerol (DAG) and phosphatidic acid (PA) by converting DAG to PA through phosphorylation in cells. Certain DGK enzymes possess C-terminal sequences that encode potential PDZ-binding motifs (PBMs), which could be involved in their recruitment into supramolecular signaling complexes. In this study, we used two different interactomic approaches, quantitative native holdup (nHU) and qualitative affinity purification (AP), both coupled to mass spectrometry (MS) to investigate the PDZ partners associated with the potential PBMs of DGKs. Complementing these results with site-specific affinity interactomic data measured on isolated PDZ domain fragments and PBM motifs, as well as evolutionary conservation analysis of the PBMs of DGKs, we explored functional differences within different DGK groups. All our results indicate that putative PBM sequences of type II enzymes, namely DGK δ , DGK η , and DGK κ , are likely to be nonfunctional. In contrast, type IV enzymes, namely DGK ζ and DGK ι , possess highly promiscuous PBMs that interact with a set of PDZ proteins with very similar affinity interactomes. The combination of various interactomic assays and evolutionary analyses provides a useful strategy for identifying functional domains and motifs within diverse enzyme families.

Introduction

Diacylglycerol kinases (DGKs) are evolutionary conserved lipid kinases whose enzymatic function is to convert DAG to phosphatidic acid (PA) by phosphorylation. In cells, they participate in lipid turnover and regulate the spatiotemporal amounts of DAG and PA. Both lipids act as secondary messenger molecules and

play essential roles in mediating cell responses by recruiting and modulating the activity of DAG and PA-binding proteins [1]. All DGK family members are highly expressed in the brain and impaired functions of certain DGKs lead to neurological diseases such as epilepsy, obsessive compulsive disorder, schizophrenia,

Abbreviations

AP, affinity purification; CASK, calcium/calmodulin dependent serine protein kinase; DAG, diacylglycerol; DAGK, diacylglycerol kinase catalytic domain; DAGKa, diacylglycerol kinase catalytic domain accessory subdomain; DAGKc, diacylglycerol kinase catalytic domain catalytic subdomain; DGK, diacylglycerol kinase; DLG1, Disks large homolog 1; L27 domain, LIN-2, -7 homology domain; LIN7C, Lin-7 homolog C; MAGI3, membrane associated guanylate kinase, WW and PDZ domain containing 3; mGluR, metabotropic glutamate receptor; mGluR-LTD, metabolic glutamate receptor-mediated long-term depression; MMP3, matrix metalloproteinase 3; MMP5, matrix metalloproteinase 5; MS, mass spectrometry; nHU, native holdup; PA, phosphatidic acid; PBM, PDZ-binding motif; PSD-95, postsynaptic density protein 95/Disks large homolog 4; SNTA1, syntrophin alpha 1; SNTB1, syntrophin beta 1; SNTG1, syntrophin gamma 1; SNTG2, syntrophin gamma 2; SNX27, sorting nexin 27; SYNJ2BP, synaptojanin 2 binding protein; ZO-1, zonula occludens-1.

bipolar disorder, or fragile X syndrome [2–8]. They are therefore promising targets for new therapeutic approaches in these diseases and understanding their regulation is of great interest [9–11].

Mammals comprise 10 DGKs classified into five types (types I–V), with a diverse variety of highly conserved domains and motifs within each type (Fig. 1) [12]. All DGK enzymes contain a catalytic domain (DAGK) composed of a catalytic (DAGKc) and an accessory (DAGKa) subdomain, that is responsible for the phosphorylation activity and at least two atypical C1 domains that do not bind DAG, except for DGK β and DGK γ , and are responsible for plasma membrane targeting of these proteins [13,14]. In addition, there are a large variety of modular domains and functional motifs that are unique to certain types of DGKs [13]. These protein regions serve specific functions, such as activity regulation and subcellular localization of the different members of the family [12]. For example, five out of the 10 human DGKs contain putative PDZ-binding motifs (PBM, Fig. 1).

PDZ domains (named after three proteins that contain this domain, postsynaptic density protein (PSD-95), *Drosophila* disk large tumor suppressor disks large homolog 1 (DLG1), and Zonula occludens-1 protein ZO-1) can interact with PBMs generally located at the C terminus of their partner proteins. PDZ domain-containing proteins are thought to be involved in the organization and localization of supramolecular signaling complexes in the cells [15]. Among DGKs, type II (DGK δ , η and κ) and type IV (DGK ζ and ι) carry a putative C-terminal tail segment that conforms to the class I (DGK η , κ , ζ , ι) or class II (DGK δ) PBM consensus sequences (class I: [S/T-X- Φ - Φ], class II: [Φ -X- Φ - Φ], class III: [E/D-X- Φ - Φ] where Φ is any hydrophobic amino acid, X is any amino acid and Φ denotes the free COOH terminus, according to the Eukaryotic Linear Motif database [16]). Although PDZ–PBM interactions may be important in the regulation of all PBM-containing DGKs, only some PDZ-mediated interactions of the DGK ζ and ι enzymes have been characterized in depth so far.

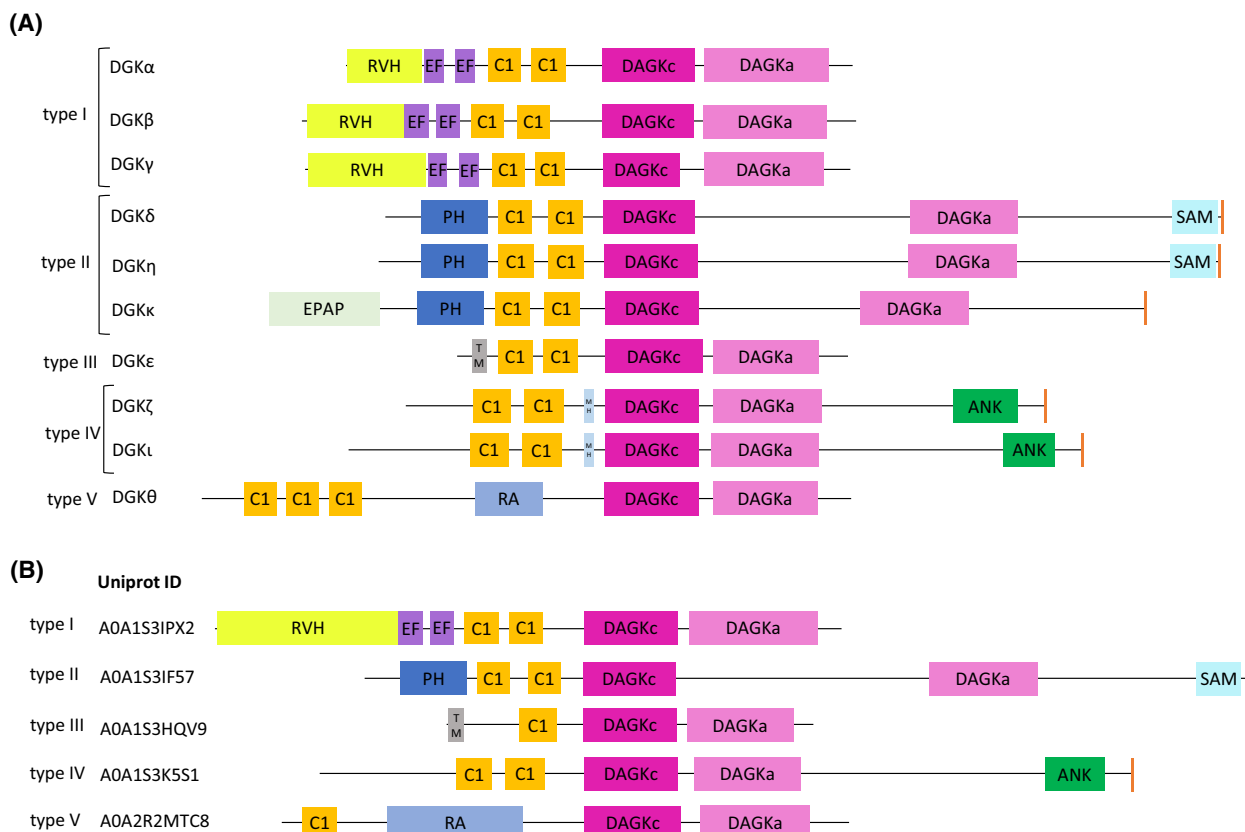


Fig. 1. Domain structure of DGKs in human and in brachiopods. (A) The domain structure of human DGKs. (B) The domain structure of brachiopod *Lingula unguis* DGKs. ANK, ankyrin repeat; C1, cysteine-rich C1 domain; EF, Ca²⁺-binding EF hand domain; EPAP, E-P-A-P repeat region; MH, MARCKS homology domain; orange C-terminal box, potential PBM; PH, pleckstrin homology domain; RA, Ras association domain; RVH, recovery homology domain; SAM, sterile alpha motif; TM, transmembrane helix.

It has been shown that the PBM of DGK ζ binds to the PDZ domains of syntrophins and together they form a ternary complex with dystrophin in cell bodies and dendrites in neurons [17]. Furthermore, DGK ζ , syntrophin, and the small GTPase Rac1 can form a signaling complex that mediates neurite outgrowth in neurons [18]. In skeletal muscle, syntrophins are important in the recruitment of DGK ζ to filamentous actin and Rac at lamellipodia and ruffles and the alteration of this interaction may contribute to disease pathogenesis in dystrophic muscle [19]. DGK ζ can also interact with all members of the multi-PDZ domain containing Disks-large (DLG) proteins and the interaction with the PSD-95/DLG4 is required for spine maintenance [20]. It has been also shown that the other member of the type IV DGKs, DGK ι can interact with PSD-95/DLG4, but it has been proposed that DGK ι acts rather presynaptically and regulates the presynaptic release probability during metabolic glutamate receptor-mediated long-term depression (mGluR-LTD) [21]. DGK ζ also binds by a PDZ-mediated manner to Sorting Nexin 27 (SNX27), whose function is the fast recycling of plasma membrane proteins from endosomes, and this interaction has been shown to participate in vesicle trafficking, antigen induced transcriptional activation, and metabolic reprogramming in T cells [22,23]. These data suggest that the PBMs of DGKs play a crucial role in the precise localization of the proteins in supramolecular complexes at specific subcellular regions, such as synaptic membranes, where they modulate receptor signaling events by converting DAG to PA locally, but we lack a comprehensive view of the PDZ binding repertoire of all PBM containing DGKs, which would be essential to elucidate their specific functions.

In this study, we comparatively analyze the functionality of the PBMs within the DGK family by using various interactomic approaches on SH-SY5Y neuroblastoma cell extracts to analyze neuronal specific complexes and evolutionary conservation analysis. Our results reveal that, despite conforming to the consensus, the PBMs of type II enzymes fail to bind PDZ domains, whereas the PBMs of the type IV kinases exhibit a remarkably promiscuous binding profile and show close functional similarity.

Results

Quantifying PBMs apparent equilibrium binding constants from cell extracts by nHU-MS

To screen for new partners and simultaneously quantify dissociation constants across the proteome, we used the nHU-MS approach, where a PBM bait is probed

against a whole cell lysate containing thousands of distinct preys [24]. As baits, we used biotinylated 10-mer C-terminal PBM peptides of the five type II and type IV DGK enzymes (Fig. 2) or biotin as control, both immobilized at 10 μ M final concentration, and measured the depletion ratio of full-length partners directly from neuroblastoma SH-SY5Y cell lysates after 2 h of incubation to ensure binding equilibrium. The measured relative prey concentration difference in the liquid phases of sample and control experiments can be converted to apparent affinities as we previously demonstrated [24]. In the experiment series, 4148 full-length endogenous proteins were detected, and a total of 10 429 affinity measurements were performed with the five PBMs (Table S1). Hyperbolic binding thresholds were applied to separate significantly depleted proteins from the background, considering both the enrichment values and the statistical variance of the measurements [25]. Significant binding, albeit with low affinity and statistical confidence, was found for DGK δ , DGK κ , and DGK η in 15, 14, and 19 partners, respectively, among which no PDZ domain-containing protein was found (Fig. 2A–C). For DGK ζ and DGK ι , we have detected 23 and 13 significant binders, out of which five were found to be PDZ domain-containing proteins (Fig. 2D, E). These five, namely SNX27, membrane associated guanylate kinase, WW and PDZ domain containing 3 (MAGI3), Lin-7 homolog C (LIN7C), calcium/calmodulin dependent serine protein kinase (CASK), and SYNJ2BP, were all shared partners of DGK ζ and DGK ι . By correlating the measured affinities for DGK ζ and DGK ι , which were statistically significant for DGK ζ , we found a significant correlation between the affinities of the two PBMs, suggesting that the two PBMs are functionally closely related (Fig. 2F).

Exploring additional interaction partners from cell extract by AP-MS

We proved before that nHU is a sensitive method to detect and quantify even weak and transient interactions [24]. However, as there is no enrichment of partners in this assay it can miss important interaction partners if they have low abundance, that is, below the detection threshold of total proteomic measurement. For this reason, we performed pulldown-based AP-MS experiments to verify that type II enzymes do not bind any PDZ proteins from the proteome, while type IVs are promiscuous binders. We used the biotinylated PBMs of DGK κ and DGK ζ from the two groups and used SH-SY5Y cell lysates as before (Fig. 3A,B). The relative amounts of 713 proteins were determined in the experiment series (Table S2). We identified 15 prey proteins

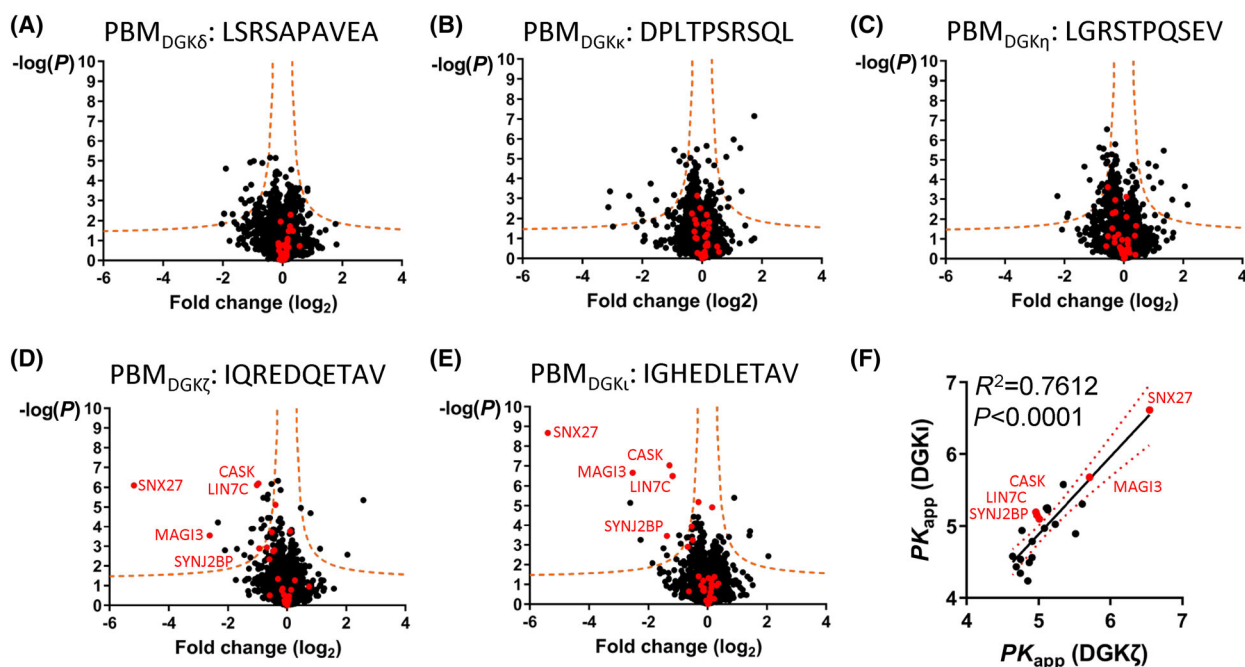


Fig. 2. Binding partners of the C-terminal PBMs of the different type II (δ , κ and η) and type IV (ζ and ι) DGKs determined by nHU-MS on SH-SY5Y cell lysates. (A–C) Volcano plots of nHU-MS with the PBM of type II DGKs, DGK δ (A), DGK κ (B) and DGK η (C). (D–E) Volcano plots of nHU-MS with the PBM of type IV DGK ζ (D) and DGK ι (E). In the case of binding, a depletion is expected in the volcano plots, so the binders appear on the left side of the plot. PDZ domain-containing proteins are labeled red on all plots. Orange dashed curves: significance thresholds. (F) Correlation between the apparent binding affinities measured for DGK ζ and DGK ι peptides. Red dotted line: 95% confidence interval. R^2 : Pearson correlation coefficient, P : P -value of two-tailed t -test, $PK_{app} = -\log_{10}(K_{app} [M])$.

for DGK ζ , and only one for DGK κ peptide bait in the AP-MS experiments above the hyperbolic significance threshold (Fig. 3A,B, Table S2). The sole potential partner detected for DGK κ peptide bait (TOMM22) does not contain any PDZ domain and is also enriched in the DGK ζ experiment indicating that it is most likely false positive. Overall, we detected 22 PDZ domain-containing proteins in the experiment series, of which 12 showed significant enrichment on the DGK ζ bait saturated resin. Among the PDZ partners identified by nHU-MS of DGK ζ , only CASK was not recognized as a significant partner in AP-MS. In addition to the PDZ domain, CASK contains heterotetramerization LIN-2, -7 homology domain (L27 domains), which are exclusively found in PDZ proteins leading to co-enrichment of multicomponent PDZ complexes, which may explain its binding in nHU-MS [26,27]. Furthermore, matrix metalloproteinase 3 and matrix metalloproteinase 5 have been found to bind according to AP-MS, but not in nHU-MS. These proteins also possess L27 domains, which could potentially contribute to their indirect copurification through stronger partner proteins that also contain L27 domains, such as DLG1.

Compared with nHU-MS experiment, there are more PDZ domain-containing proteins among

significant binders in the AP-MS with the DGK ζ peptide (5/23 in nHU and 12/15 in AP, Table S3). Between the enrichment values of proteins detected in AP-MS and the determined PK_d values by nHU-MS, we could not find a correlation ($PK_d = -\log_{10}(K_d [M])$, Fig. 3C). Given that the two methods measure different parameters of interactions, this result is not surprising [28]. However, we found a better agreement between fragmentomic affinities from the ProfAff database and the affinities measured by nHU-MS (see below, Fig. 3D). Overall, by combining the two different techniques, we demonstrated that type II enzymes are apparently unable to recruit PDZ-domains and we have determined the affinities and validated the key PDZ-mediated interactions of type IV enzymes in neuroblastoma cells (Fig. 3E, visualization by ProFeat-Map [29], site-specific affinities by ProfAff database [26]).

Correlative analysis of fragmentomic PDZ-binding profiles of different DGKs using the ProfAff database

Both nHU-MS and AP-MS measure interactions with full-length proteins across the proteome, yet the

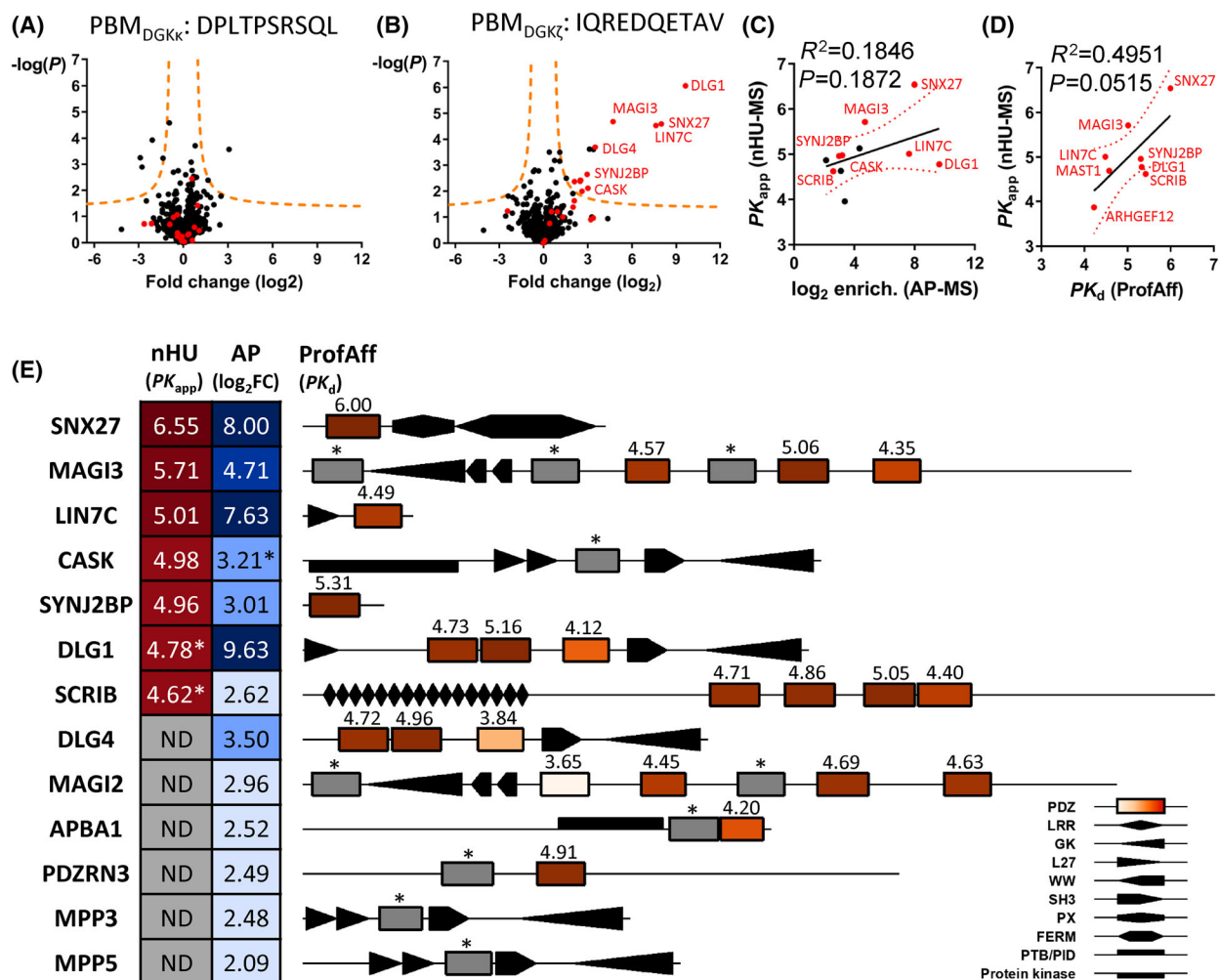


Fig. 3. Binding partners of the C-terminal PBMs of DGK κ (type II) and DGK ζ (type IV) determined by different interactomics approaches on SH-SY5Y cell lysates. (A) Partners detected for the DGK κ peptide by AP-MS. (B) Partners detected for the DGK ζ peptide by AP-MS. 15 significant binding partners were detected, among which 12 contain PDZ domains. (C) Comparison of measured enrichment values in AP-MS and the determined PK_{app} s in nHU-MS for the proteins detected by both methods. (D) Comparison of calculated affinities measured by nHU and domain affinities taken from the ProfAff database [26]. PDZ domain-containing proteins labeled red on panels A–D. (E) The domain structures of major PDZ domain-containing interactors of the DGK ζ PBM according to the interactomic assays performed in this study. Color codes from yellow to red indicates weaker to stronger affinity values (nHU, ProfAff) or from light blue to dark blue weaker or higher enrichment values (AP). Gray: Not detected (ND) or below threshold (*). Values over PDZ domains: PK_d s from ProfAff database [26]. Visualization: ProFeatMap [29].

utilized motifs are expected to bind only with PDZ domain-containing proteins in a direct manner. To compare the binding profiles of the PBMs of DGKs across the entire human PDZome in the most sensitive manner, we analyzed the recently measured PDZ–PBM affinity interactomic map (available on the ProfAff server [26]). These data consist of equilibrium binding constants of >65 000 PDZ–PBM interactions that were measured between purified PDZ domains and synthetic 10-mer C-terminal PBM peptides by high-throughput holdup method [26]. The binding

constants for DGK κ (type II) and DGK ζ (type IV) were determined against 97% of all the PDZ domains of the human proteome (258 out of 266, Table S4). For the DGK ζ peptide, 26% of the total measured PDZome showed binding above the detection threshold and several strong binding affinities were determined (13 PDZ domains showed $PK_d > 5$), while for the DGK κ peptide only 9% of the measured PDZome showed detectable binding and all interactions determined were below 5 PK_d (Fig. 4A). We have found only minor overlap between the identified binders

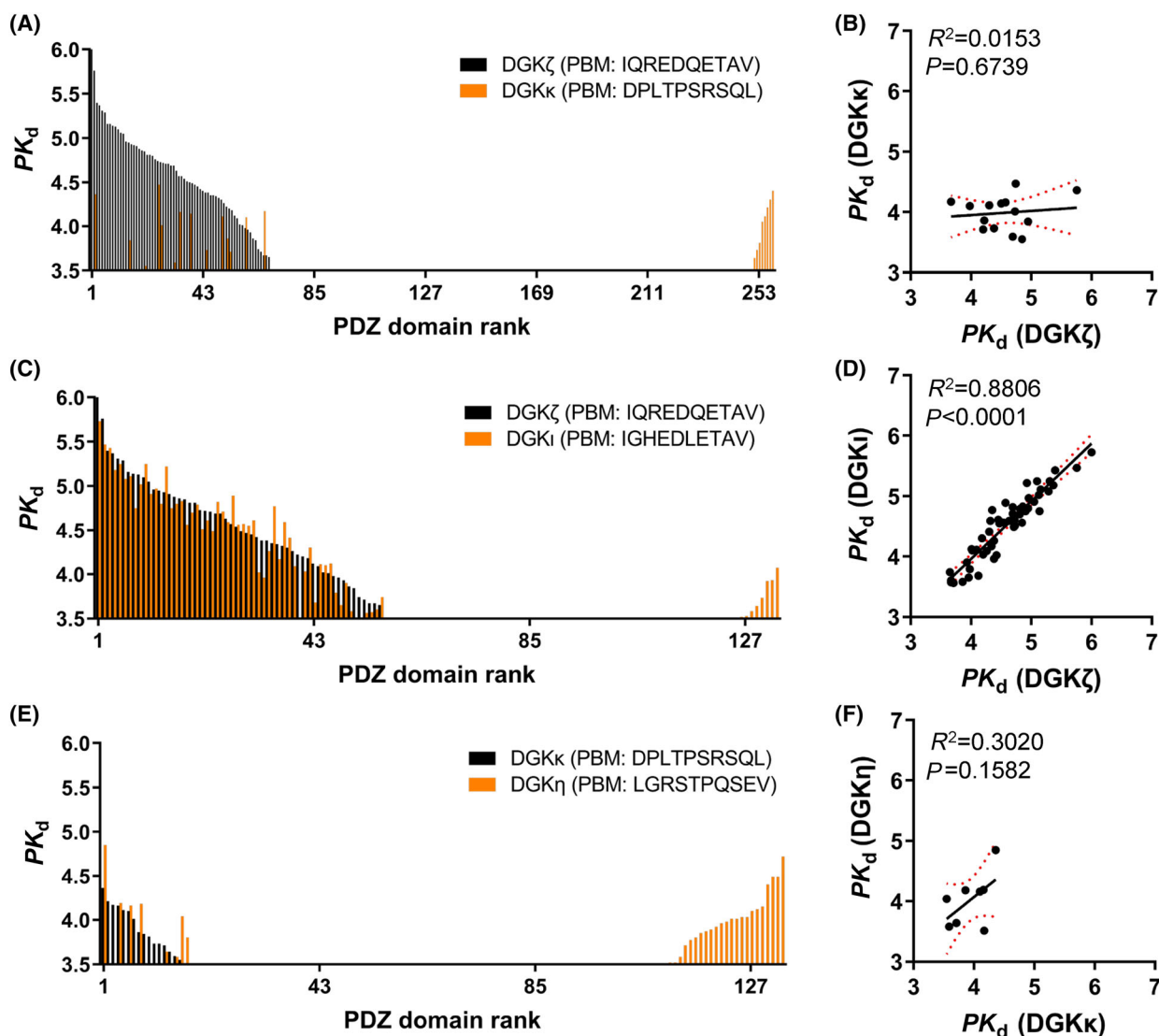


Fig. 4. Comparative analysis of PDZ domain-binding profiles of PBM-containing DGKs using the ProfAff database. (A) PK_d values measured between the PBMs of DGK ζ (black) and κ (orange) and different PDZ domains. (B) Correlation between the binding affinities measured for DGK ζ and κ peptides. (C) PK_d values measured between the PBMs of DGK ζ (black) and ι (orange) and different PDZ domains. (D) Correlation between the binding affinities measured for DGK ζ and ι peptides. (E) PK_d values measured between the PBMs of DGK κ (black) and η (orange) and different PDZ domains. (F) Correlation between the binding affinities measured for DGK κ and η peptides. PDZ domains are ranked from the strongest to the lowest affinity from left to right for the first DGK (black) and the remaining non-common binders for the second DGK (orange) were ranked from right to left according to their affinities. R^2 : Pearson correlation coefficient, P : P -value of two-tailed t -test, red dotted lines: 95% confidence intervals, $PK_d = -\log_{10}(K_d [M])$.

(Jaccard similarity = 0.18) and no significant correlation between the affinities of the binders for DGK ζ and DGK κ ($n = 14$ over 258, Pearson's correlation coefficient $R^2 = 0.015$, two-tailed t -test $P = 0.67$, Fig. 4B).

The binding profiles of DGK ι (type IV) and DGK η (type II) were also previously measured, albeit only using 133 PDZ domains. We found that DGK ζ and

DGK ι share highly similar binding profile, as they bind almost the same proteins (common binders $n = 53$, Jaccard similarity = 0.83, Fig. 4C) with almost the same binding constants (Pearson's correlation coefficient $R^2 = 0.88$, two-tailed t -test $P < 0.0001$, Fig. 4D). In the case of DGK η , we observed low binding affinities (all measured PK_d values were below 5) just as in the case of DGK κ (Fig. 4E). No overlap

between binders (common binders $n = 8$, Jaccard similarity = 0.2) or significant correlation between the affinities of the DGK κ and DGK η PDZ partners were identified ($R^2 = 0.30$, two-tailed t -test $P = 0.16$, Fig. 4F).

We compared the fragmentomic affinities of the DGK ζ peptide from the ProfAff database and the affinities obtained for full-length proteins in the nHU experiment (Fig. 3D,E). Due to the quantitative nature of the nHU experiment, even affinity values below the binding threshold may be meaningful, but due to the low affinities we lose statistical power. For this reason, we included even values below the binding threshold in the case of nHU. We used estimated composite affinities from fragmentomic affinities for multi-PDZ domain-containing proteins (such as DLGs or SCRIB, see further details in [Materials and Methods](#)) [26]. The statistical correlation between the affinity values of the full-length proteins and the isolated domains was just below the threshold of $\alpha = 0.05$, indicating a likely agreement ($R^2 = 0.50$, $P = 0.052$). Nonetheless, the lack of correlation can be attributed to the possibility that the full-length proteins in the native experiment may possess additional interaction sites that can influence binding, whereas isolated domains may behave differently when embedded in the full-length protein. Additionally, fragmentomic affinities were measured on individual domains that we combined in a simple manner to obtain a singular affinity for multi-PDZ proteins ([Materials and Methods](#)), but in reality, the actual affinities may depend on the individual domain affinities in a more intricate manner.

Overall, for the DGK ζ peptide, the nHU-MS allowed us to identify and quantify the interaction with seven full-length partners. With AP-MS, we expanded the partner count to a total of 12, including six partners that were also detected in nHU-MS and an additional six partners. Our highly sensitive fragmentomic holdup approach revealed and quantified 55 partners for the DGK ζ peptide and added 45 PDZ domain-containing proteins to the list of binders compared with the combined results of nHU-MS and AP-MS (Fig. 5A) providing more complete picture about the function of the protein (Fig. 5B).

Evolutionary conservation analysis of the PBM-like sequences in the DGK family

The PDZ domains are evolutionary highly conserved modules of the proteome, and their interactions can create significant selection pressure leading to

evolutionarily conserved PBMs [30]. Therefore, we investigated the degree of conservation of PBMs among DGK proteins, which may indicate their binding ability to PDZ proteins. We collected DGK sequences across all the phylogenetic tree by sampling all major taxa equally and taking the Lifemap tool as a guide [31]. First, 176 sequences were collected from 39 species of different taxa using the Uniprot database. The domain architecture in the DGK family is highly conserved in multicellular organisms (as an example, we present here the domain structures of DGKs from human and brachiopod *Lingula unguis*, Fig. 1A,B, respectively), thus we used domain structure identification to separate the different types and enzymes in the first round using the NCBI conserved domain database [32]. Then, with careful manual selection and annotation, all DGK δ and alternative transcripts (mainly isoform 2 of DGK η) were removed. DGK δ contains a class II PBM that seems highly variable among species, and the second isoform of DGK η does not contain the C-terminal PBM sequence. After selection, 114 sequences were kept from 37 species in total (54 type II and 60 type IV DGKs, Table S5). The classification was then validated by alignment and phylogram creation for all collected sequences, where the different types and enzymes were grouped together. Note that the annotation of the enzymes is not complete and there might be species containing the whole set of enzymes, but we were unable to identify them in the database.

Human homologous DGKs appear very early on in the evolutionary tree in the Eukarya superkingdom. Green plants (Viridiplantae) have DGK proteins with similar enzyme mechanism but with different domain architectures and there are only three types of plant DGKs, all without PBMs [33]. Type IV DGKs seem to be the more ancient, a protein with the typical domain structure already present in some fungi (Table S5). The five types of DGKs with the typical domain structure can first be distinguished in early metazoans (representative species of the evolutionary tree for type II and type IV DGKs in Fig. 6A,B, respectively). In Cnidaria there is already a type IV enzyme with a C-terminal PBM sequence closely resembling to the human DGK ζ sequence (YETAV). The DGK ζ and ι sequences can undoubtedly be identified in fish (Cypriniphysae). The PBM of the type IV enzyme in cartilaginous fish is identical to that in humans (QETAV). In contrast, the first type II enzyme can be identified in sponges (Porifera). From cartilaginous fish to marsupials, two types of type II DGK are already present that are similar to DGK ι (e.g. they typically have a SAM domain). One type of

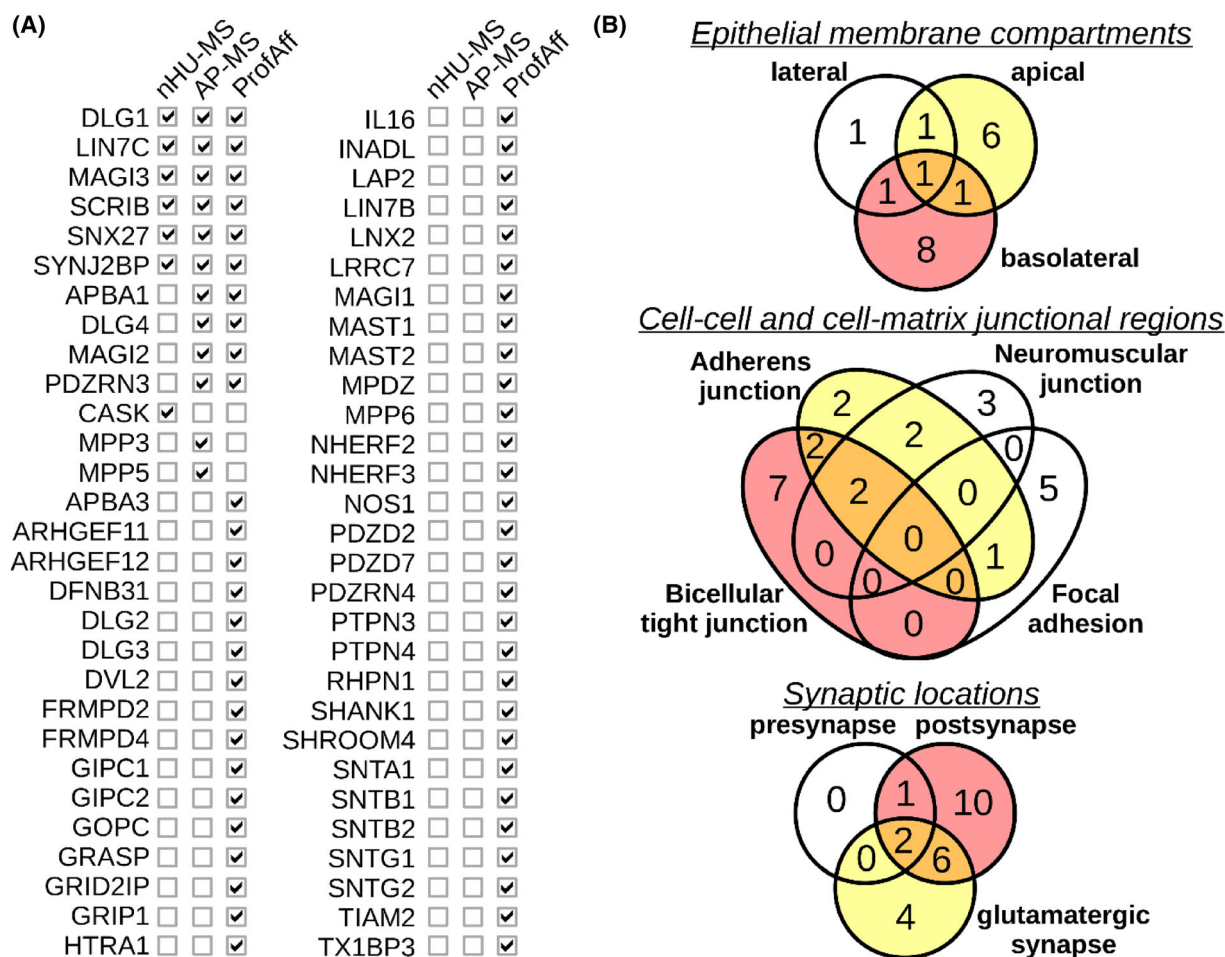


Fig. 5. Localization of PDZ interaction partners of DGK ζ to different subcellular regions in epithelial and neuronal cells. (A) Identified partners with the different interactomics assays. (B) Number of identified partners in different compartments. The most and the second most enriched ontologies are colored red and yellow, respectively. Cellular compartment analysis of the binders of the DGK ζ tail was performed with DAVID tool with standard parameters [34].

these enzymes forms a well-separated group during alignments, which does not form a common group with either ι or δ , but is clearly transcribed from a separate gene. It is likely that these enzymes are closer to the ancient DGK κ , and we therefore call them DGK κ -like enzymes. A DGK κ that is similar to human is firstly separable in Afrotheria. Human-like PBM sequences are identifiable in cartilaginous fish (TISEI, SMSEV), but they are highly variable among groups.

We used the sequences collected to create a sequence logo in case of the different types and enzymes (Fig. 6C,D). Sequence logos indicate that the PBMs of type IV enzymes are highly conserved, while the PBMs of type II enzymes show weak conservation between different animal groups, validating functional differences that we have also observed with the combination of interactomic assays.

Discussion

Promiscuity and evolutionary conservation of the PBMs in the DGK family

By using quantitative nHU-MS that is capable to determine equilibrium binding constants directly from cell extracts, we determined the affinities of several PDZ domain-containing full-length partners of DGK ζ and ι from SH-SY5Y cell lysates. Among the significant partners of type II enzymes DGK κ , η and δ , we have not seen any PDZ domain-containing proteins, suggesting that these enzymes cannot be recruited by PDZ domains. Besides PDZ-domain containing proteins, we detected several other partners above threshold that could potentially bind to the C-terminal end of these DGKs; however, we could not validate these

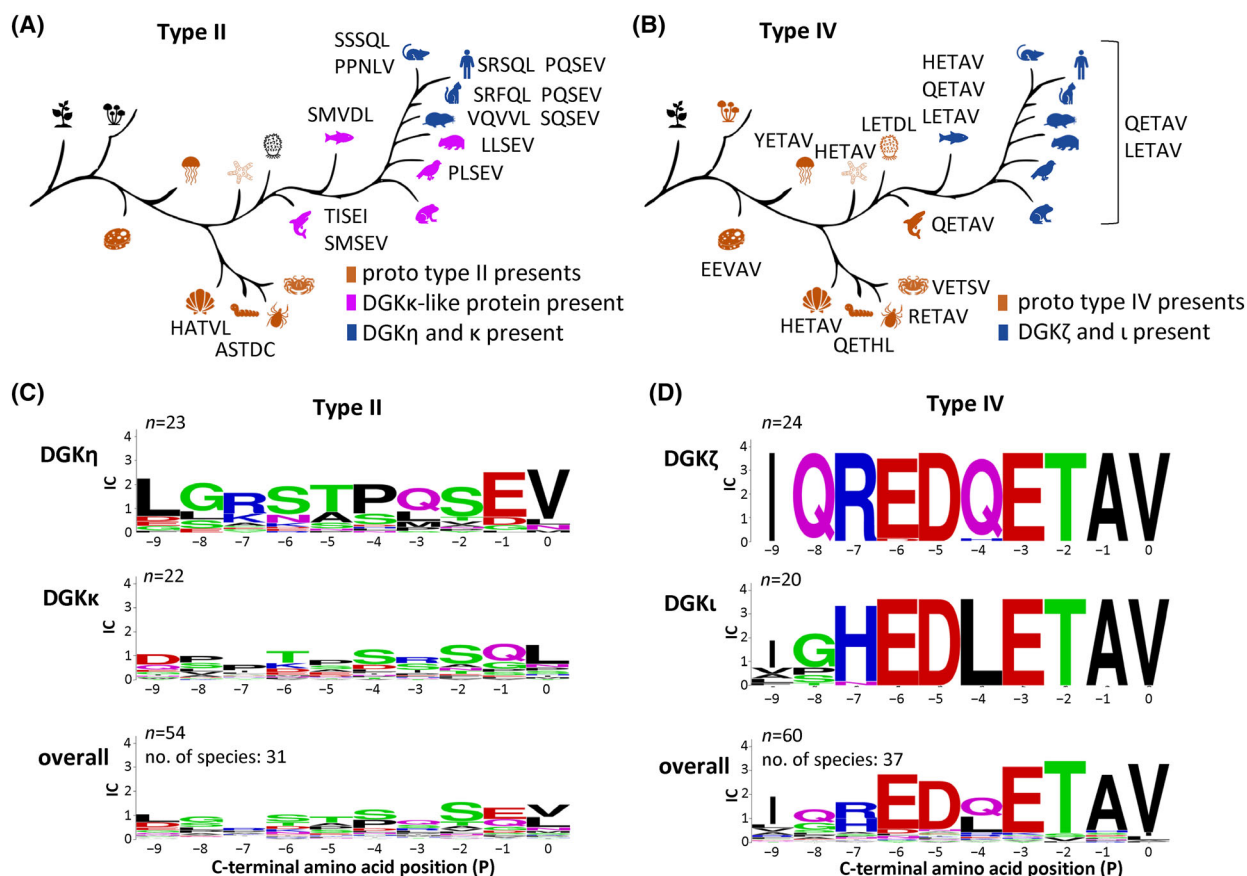


Fig. 6. Evolutional conservation analysis of the PBMs among type II and type IV DGKs. (A, B) The PBM of type II (A) and type IV (B) DGKs in representative species. DGK sequences were collected from all major clades from the evolutionary tree and classified to different enzyme groups by using domain identification and phylograms based on the alignment of full sequences. Representative taxa and species from left to right: Viridiplantae (green plants), Fungi incertae sedis (fungi with unidentified origin), *Amphimedon queenslandica* (sponge), *Nematostella vectensis* (starlet sea anemone), *Lingula unguis* (lamp shell), *Caenorhabditis elegans* (roundworm), *Ixodes scapularis* (black-legged tick), *Daphnia magna* (waterflea), *Strongylocentrotus purpuratus* (purple sea urchin), *Ciona intestinalis* (sea vase), *Callorhynchus milii* (ghost shark), *Danio rerio* (zebrafish), *Xenopus tropicalis* (western clawed frog), *Taeniopygia guttata* (zebra finch), *Vombatus ursinus* (common wombat), *Chrysochloris asiatica* (cape golden mole), *Felis catus* (cat), *Mus musculus* (house mouse), *Homo sapiens* (human). (C, D). Conservational sequence logos of PBMs in type II (C) and type IV (D) enzymes (created by WebLogo [35]). *n*: total number of sequences used for logo creation.

findings using AP-MS with the DGK κ peptide, potentially because these interactions are either aspecific or too weak and transient. In contrast, we identified several partners—most of them proteins containing the PDZ domain—for the DGK ζ peptide with AP-MS. We also performed a careful meta-analysis of our recent high-throughput affinity survey, mapping the PDZ interactomic landscapes of PBMs in the DGK family. The ProfAff database includes not only Boolean lists of interactions of the different DGK PBMs but also precisely quantified site-specific affinity constants, which allow us to explore the binding preferences by ranking all potential target proteins across the proteome, as well as to precisely quantify the similarities or differences between the various members of

the DGK family in multidimensional affinity spaces. Both in the fragmentomic holdup (from the ProfAff database) and in nHU, the binding profiles of the two type IV DGKs, DGK ζ and ι mediate highly similar affinities with PDZ domains. According to our results, type IV DGKs are highly promiscuous PDZ domain binders with many strong interactions, while type II DGKs do not have any strong binders in particular. We further validated our observations by evolutionary conservation analysis, where we found that the PBMs of type II DGKs are not conserved across species, while type IV showed high conservation. Overall, we demonstrated that the PBMs of type II DGKs are rather nonfunctional or form low affinity complexes, while the binding profiles of the PBMs of type IV

DGKs are highly similar, suggesting that in cells they may be the part of the same supramolecular complexes depending on the availability of the partner proteins.

In-depth description of the PDZ-mediated interactions of DGK ζ

Using a combination of approaches, we described the most relevant partners of the C-terminal tail of DGK ζ (Fig. 5A). We have found that 58 PDZ proteins show detectable binding out of the 150 PDZ proteins encoded in the human genome. Not surprisingly, most of these partners were identified in the fragment-based holdup method (ProfAff), because this approach systematically probes interactions with all human PDZ domains and is significantly more sensitive than the nHU assay due to its more precise analytical approach [26]. However, the presence of PDZ proteins in a specific cell type varies and therefore the complexes of DGK ζ with PDZ proteins will also likely vary across cell types [28]. Since neuronal activities of DGKs are of high importance, we studied in depth the interactions of DGK ζ in SH-SY5Y glioblastoma cell line.

With the nHU approach, we have determined several binding affinities with PDZ domain-containing proteins directly from SH-SY5Y cell extracts. Among them, the strongest affinities have been observed between SNX27, MAGI3, LIN7C, CASK, and SYN2BP and the DGK ζ peptide (Fig. 5A). Although fragmentomic studies revealed high affinity interactions with the PDZ domains of syntrophins (SNTG1, SNTA1, SNTB1, and SNTG2) and DLGs (DLG1 and DLG4), these partners were either not detected in the nHU or did not show significant binding (DLG1, $PK_{app} = 4.78$). It is important to note that interactions below significance threshold can be meaningful in nHU, because fold change values in these experiments are physical constants and interactions with weak affinities will result in small fold changes that can be challenging to measure statistically significantly [24]. Consequently, due to the lack of enrichment of interaction partners, nHU could fail to identify those with abundances below the detection threshold of MS. To detect these binding partners from cell extracts, we used AP-MS, where enrichment of partner proteins aids their identification at the expense of the loss of affinity information provided by nHU. Overall, the combination of these different techniques gives a picture of the most important partners for the tail of DGKs in glioblastoma cell lines, but the actual complexes with the tail of DGK ζ may differ in different cell types. For example, in neurons where syntrophins are highly expressed, these interactions may dominate complex formation with DGKs, however, in different

cell types, alternative proteins such as SNX27, MAGI1, or DLG1 may emerge as the predominant partners.

Nevertheless, considering all putative partners of DGK ζ —identified with any of our approaches—shows that it has a high preference to bind postsynaptic proteins, proteins found in glutamatergic synapse, proteins involved in cell–cell contacts, such as tight junctions or adherens junctions, that often also show strong polarization based on cellular compartment analysis (DAVID tool, Fig. 5B) [34]. Given the biological importance of these features, the strong evolutionary conservation of the tails of type IV DGKs is not surprising and it marks a clear contrast with the type II DGKs which apparently lack their ability to bind to the same targets through their C-terminal tails. Nonetheless, the involvement of type II DGKs in neuronal activities is equally crucial, albeit not mediated by PDZ domains.

Limitations of the study

Although here we conducted a series of interactomic studies supported by evolutionary analyses, there are still limitations to these types of experiments that need further elucidation. In this study, we focused on the neurologically important partners of DGKs and therefore used SH-SY5Y neuroblastoma cell line. To fully explore functionally important interactions in a given cell type, it may be necessary to perform these experiments with other, more adequate cellular extracts, such as differentiated primary neuron cultures or brain extracts. However, the main advantage of native holdup (nHU) over pulldown-based assays is that it measures intrinsic binding constants that do not vary between different cell extracts [24]. Yet, this assay is limited by the proteomic coverage of the mass spectrometry (MS) experiments since it does not rely on enrichments of the specific partner proteins. Further experiments with different cell extracts could allow the detection of other partners. Besides, all experiments were performed exclusively with C-terminal peptides of DGKs that can compromise some of our findings. For further exploration of the binding partners, additional experiments are needed with the full-length DGKs, preferably in their native cellular environment.

Materials and methods

Cell culturing and lysate preparation for AP-MS and nHU-MS

SH-SY5Y cells (purchased from ATCC, Manassas, VA, USA, #CTR-2266) were cultured in RPMI 1640 medium without HEPES (Gibco/Thermo Fisher Scientific, Waltham,

MA, USA, ref. 11872101) complemented with 10% FCS and 40 $\mu\text{g}\cdot\text{mL}^{-1}$ gentamycin and kept in a 37 °C incubator, diluted twice a week 1/5. The SH-SY5Y cell line was purchased from ATCC and the originally amplified and frozen cells were directly used for experiments. All experiments were performed with mycoplasma-free cells.

For cell lysate preparation, 5×10^6 cells were seeded onto a T-175 flask. When the cells reached confluence, they were placed on ice and washed once with sterile PBS. Then, 1 mL of ice-cold lysis buffer (50 mM Hepes-KOH pH 7.5, 150 mM NaCl, 1% Triton X-100, 1 \times cOmplete EDTA-free protease inhibitor cocktail, 2 mM EDTA, 5 mM TCEP, 10% glycerol) was added to them, and the cells were scraped from the surface of the flask and collected in 15-mL Falcon tubes. The lysate was sonicated 4 \times 20 s with 1-s-long pulses on ice and incubated on a roller mixer for 30 min at 4 °C, then centrifuged at 12 000 *g* for 20 min at 4 °C. The supernatant was kept and the total protein concentration was determined by standard Bradford method (Protein Assay Dye Reagent #5000006, Bio-Rad, Hercules, CA, USA) using a BSA calibration curve (#160069, MP Biomedicals, Santa Ana, CA, USA, diluted in lysis buffer) on a Bio-Rad SmartSpec 3000 spectrophotometer instrument. Lysates were diluted to 2 $\text{mg}\cdot\text{mL}^{-1}$ and were snap-frozen in liquid nitrogen and stored at -80 °C until the measurements.

Peptide synthesis

HPLC purified (> 95% purity) biotinylated 10-mer peptides of the five DGK proteins (DGK δ , DGK η , DGK κ , DGK ζ , DGK ι , gene names: DGKD, DGKH, DGKK, DGKZ, DGKI, respectively, Uniprot accession codes: Q16760-1, Q86XP1-1, Q5KSL6, Q13574-2, O75912, respectively) were chemically synthesized by an ABI 443A synthesizer with standard Fmoc strategy with the biotin group attached to the N terminus via a trioxatridecan-succinamic acid (ttds) linker and were purified with high-performance liquid chromatography (LC, > 95% purity). Predicted peptide masses were confirmed by MS. Peptide concentrations were determined based on their dry weight.

Native holdup

Native holdup with the peptide baits has been performed as described before [24]. Briefly, we saturated 25 μL streptavidin resin (Cytiva, Marlborough, MA, USA, Streptavidin Sepharose High Performance, ref. GE17-5113-01) with biotin (control) or peptides at 60 μM concentration in 6 resin volume holdup buffer containing 50 mM Tris (pH 7.5), 300 mM NaCl, and 1 mM TCEP (0.22 μM filtered) for 1 h at RT. According to our previous validation experiments, ~ 10 μM bait concentration can be achieved by mixing 25 μL of this bait-saturated streptavidin resin with 100 μL of cell lysate [24,26]. The remaining sites on the resin were fully depleted by adding 25 μL 1 mM biotin and incubated it for 10 min

at room temperature. Resins were washed three times with 10 resin volume holdup buffer. Then, the saturated streptavidin resins were mixed with 100 μL of SH-SY5Y cell lysate (2 $\text{mg}\cdot\text{mL}^{-1}$) and incubated by gentle rolling for 2 h at 4 °C. After the incubation, the resins were separated from the supernatants by brief centrifugation (15 s, 2000 *g*) and the supernatants were kept for label-free quantitative MS analyses.

Affinity purification (AP)

During the AP experiment, 25 μL streptavidin resin was mixed with 165 μL biotin or biotinylated peptide at a concentration of 63 μM and incubated for 1 h at room temperature in AP buffer (50 mM Tris pH8.5, 150 mM NaCl, 1 mM TCEP) to achieve resin saturation. The resins were washed once with 10 \times resin volume of AP buffer and depleted with 40 μL 1 mM biotin for 10 min at room temperature. Finally, resins were washed twice with 10 \times resin volume of AP buffer. After centrifugation of the resins (800 rpm, 2 min), the supernatant was completely removed and 1 mg (0.5 mL, 2 $\text{mg}\cdot\text{mL}^{-1}$) of cell lysate was added to each tube and incubated by gentle rolling for 2 h at 4 °C. The resins were then washed three times with 10 \times resin volume of Wash buffer (50 mM Tris pH8.5, 150 mM NaCl, 1 \times cOmplete EDTA-free protease inhibitor cocktail, 2 mM EDTA, 1% Triton-X, 1 mM TCEP) and three times with AP buffer. After centrifugation (800 rpm, 2 min), the supernatant was completely removed and the elution buffer (8 mM urea, 20 mM Tris pH8.5, 100 mM NaCl, 100 μM TCEP) was added at 3 \times resin volume and incubated for 30 min at room temperature mixing often. The samples were centrifuged at 2000 *g* for 1 min, and the supernatant was kept. Then the elution step was repeated and the two supernatants were mixed and centrifuged again 2000 *g* for 1 min to completely remove all the remaining resin. This final supernatant was kept for label-free quantitative MS analysis.

Sample digestion for MS

The samples were precipitated with 20% TCA overnight at 4 °C and centrifuged at 12 000 *g* for 10 min at 4 °C. Protein pellets were washed twice with 1 mL of cold acetone and air dried. The protein extracts were solubilized in 8 M urea, reduced with 5 mM TCEP for 30 min, and alkylated with 10 mM iodoacetamide for 30 min in the dark. Double digestion was carried out at 37 °C in 2 M urea with 1 μg endoproteinase Lys-C and 1 μg trypsin overnight. The peptide mixtures were then desalted on C18 spin-column and dried on Speed-Vacuum.

LC-MS/MS analysis

Samples were analyzed using an Ultimate 3000 nano-RSLC (Thermo Scientific, San Jose, CA) coupled in line with

LTQ-Orbitrap Elite (AP-MS) or Exploris (nHU-MS) mass spectrometers via nano-electrospray ionization source (Thermo Scientific). Peptide mixtures were injected in 0.1% TFA into a C18 Acclaim PepMap100 trap-column (75 μm ID \times 2 cm, 3 μm , 100 \AA , Thermo Fisher Scientific) for 3 min at 5 $\mu\text{L}\cdot\text{min}^{-1}$ with 2% ACN, 0.1% FA in H_2O and then separated in a C18 Accucore nano-column (75 μm ID \times 50 cm, 2.6 μm , 150 \AA , Thermo Fisher Scientific) at 220 $\text{nL}\cdot\text{min}^{-1}$ and 38 $^\circ\text{C}$ with a 90 min linear gradient from 5% to 30% buffer B (A: 0.1% FA in H_2O /B: 99% ACN, 0.1% FA in H_2O), regeneration at 5% B. The mass spectrometer was operated in positive ionization mode, in data-dependent mode with survey scans from m/z 350–1500 acquired in the Orbitrap at a resolution of 120 000 at m/z 400. The 20 most intense peaks from survey scans were selected for further fragmentation in the Linear Ion Trap with an isolation window of 2.0 Da and fragmented by CID with normalized collision energy of 35% (TOP20CID method). Unassigned and single charged states were excluded from fragmentation. The Ion Target Value for the survey scans (in the Orbitrap) and the MS2 mode (in the Linear Ion Trap) were set to 1E6 and 5E3, respectively, and the maximum injection time was set to 100 ms for both scan modes. Dynamic exclusion was set to 20 s after one repeat count with mass width at ± 10 ppm. The raw LC tandem MS data have been deposited to the ProteomeXchange via the PRIDE database with identifier PXD042853.

Data extraction from ProfAff database and analysis

For the comparative analysis of DGK PBM binding affinities, we collected the data from the ProfAff database described previously that contains equilibrium binding constants of PDZ-PBM interactions between purified PDZ domains and synthetic 10-mer C-terminal peptides [26]. To determine the Jaccard similarities, we used the built-in “compare” function of the website. For profile and affinity comparisons the retrieved data can be found in Table S4. To determine correlation between the datasets, we used linear regression fitting using only those affinity pairs where both motifs showed measurable affinity for the given PDZ domain in the database. The significance of the correlations was determined using two-sided Student's *t*-test using the null hypothesis that the slope is 0 and the 95% confidence intervals were depicted using the GRAPHPAD PRISM 7 software.

We calculated composite affinity values to estimate affinities for full-length proteins from domain affinities found in the ProfAff database in case of multi-PDZ domain-containing proteins as before [26]. This calculated value does not consider potentially important factors contributing to affinity, such as the formation of higher order multivalent complexes, but the lower limit of affinity can be estimated by the help of the formula [26].

Data analysis

For MS data analysis, proteins were identified by database searching using SequestHT (Thermo Fisher Scientific) with the Proteome Discoverer 2.4 software (PD2.4, Thermo Fisher Scientific) in the human fasta database downloaded from SwissProt. Precursor and fragment mass tolerances were set at 7 ppm and 0.6 Da, respectively, and up to two missed cleavages were allowed. Oxidation (M, +15.995 Da) was set as a variable modification and Carbamidomethylation (C, + 57.021 Da) as fixed modification. Peptides and proteins were filtered with a false discovery rate (FDR) at 1%. Label-free quantification was based on the extracted ion chromatography intensity of the peptides. All samples were measured in technical triplicate. The measured XIC intensities were normalized on median intensities of the entire dataset to correct for minor loading differences. For statistical tests and enrichment calculations, not detectable intensity values were treated with an imputation method, where missing values were replaced by random values similar to 10% of the lowest intensity values present in the entire dataset. Unpaired two tailed *t*-test, assuming equal variance, were performed on obtained \log_2 XIC intensities. The hyperbolic binding threshold for nHU-MS was calculated as follows

$$y = y_0 + \frac{-c}{(x-x_0)}$$

And for AP-MS as

$$y = y_0 + \frac{c}{(x-x_0)}$$

where *y* is the *P*-value threshold at the fold change of *x*, *c* is an empirically fixed curvature parameter at 1 for nHU-MS and 4 for AP-MS experiments, *y*₀ is the minimal *P*-value threshold and *x*₀ is the minimal fold change value for any given dataset. The minimal *P*-value was defined at $1.3 - \log_{10}(P\text{-value})$ and thus there is a > 95% probability that all identified interaction partners are true interaction partners. The minimal fold-change value cutoff was set at 1 σ and was determined by measuring the width of the normal distribution of all measured fold changes in a given experiment. Note that this threshold can only be interpreted for interaction partners with fold change values of $-x > x_0$ in the case of nHU-MS experiments or $x > x_0$ in the case of AP-MS experiments. nHU-MS data are available in Table S1 and AP-MS data are available in Table S2.

For further statistical analyses and visualizations, the GRAPHPAD PRISM 7 software was used. For domain structure and protein feature visualizations, ProFeatMap website tool was used [29]. Cellular compartment analysis was performed with the help of DAVID tool with standard parameters [34].

Collection of DGK sequences across the phylogenetic tree, classification and sequence logos

For the evolutionary conservation analysis of PBMs, DGK sequences were manually collected from all major clades of the phylogenetic tree using the Lifemap tool [31] as a guide and the Uniprot database. In total, 176 sequences were collected in the first round from 40 species. Careful manual selection was performed by removing all DGK δ and alternative transcripts without PBM. After the selection, 114 sequences were kept from which 54 identified as type II and 60 as type IV (Table S5). DGKs are classified into different types based on their domain structure, we used NCBI Conserved Domain Database Search [32] to identify the different types of DGKs and the different enzymes. For final validation, an alignment was performed using Clustal Ω multiple sequence alignment and a sequence phylogram was created using JALVIEW version 2.11.2.4. Sequence logos were created using WebLogo tool [35]. Note that DGK κ -like sequences were indicated as DGK κ during logo creation.

Acknowledgments

We are grateful for the help of the cell culture platform at IGBMC in this project. We thank to Goran Bich for his kind help in figure generation using the ProFeatMap. BZ was supported by Fondation pour la Recherche Médicale (FRM, SPF202005011975). GG was supported by the Post-doctorants en France program of the Fondation ARC and by the collaborative postdoctoral grant of the IGBMC. The project was supported by the Ligue contre le cancer (équipe labellisée 2015 to GT), the Agence Nationale de la Recherche (ANR-18-CE92-0017 to GT and ANR-18-CE12-0002-01 to HM), and Fondation Jérôme Lejeune to HM. This work of the Interdisciplinary Thematic Institute IMCBio, as part of the ITI 2021-2028 program of the University of Strasbourg, CNRS, and Inserm, was supported by IdEx Unistra (ANR-10-IDEX-0002), and by SFRI-STRAT'US project (ANR 20-SFRI-0012) and EUR IMCBio (ANR-17-EURE-0023) under the framework of the French Investments for the Future Program.

Conflict of interest

The authors declare no conflict of interest.

Author contributions

BZ, GG, HM, and GT conceptualized the study. BZ and GG designed and carried out the experiments and

all the analyses. Peptide syntheses were performed by PE. MS experiments were performed by BM and LN. GT and HM obtained funding for the experiments. BZ wrote the original draft of the paper. All authors reviewed the manuscript.

Peer review

The peer review history for this article is available at <https://www.webofscience.com/api/gateway/wos/peer-review/10.1111/febs.16994>.

Data availability statement

All data and materials needed to evaluate the conclusions in the paper are present in the paper and/or the Supplementary Materials and in public databases. Raw mass spectrometry data are available via ProteomeXchange with identifier PXD042853.

References

- 1 Sakane F, Hoshino F & Murakami C (2020) New era of diacylglycerol kinase, phosphatidic acid and phosphatidic acid-binding protein. *Int J Mol Sci* **21**, 1–36.
- 2 Ishisaka M & Hara H (2014) The roles of diacylglycerol kinases in the central nervous system: review of genetic studies in mice. *J Pharmacol Sci* **124**, 336–343.
- 3 Rodriguez De Turco EB, Tang W, Topham MK, Sakane F, Marcheselli VL, Chen C, Taketomi A, Prescott SM & Bazan NG (2001) Diacylglycerol kinase regulates seizure susceptibility and long-term potentiation through arachidonoyl-inositol lipid signaling. *Proc Natl Acad Sci U S A* **98**, 4740–4745.
- 4 Leach NT, Sun Y, Michaud S, Zheng Y, Ligon KL, Ligon AH, Sander T, Korf BR, Lu W, Harris DJ *et al.* (2007) Disruption of diacylglycerol kinase delta (DGKD) associated with seizures in humans and mice. *Am J Hum Genet* **80**, 792–799.
- 5 Usuki T, Takato T, Lu Q, Sakai H, Bando K, Kiyonari H & Sakane F (2016) Behavioral and pharmacological phenotypes of brain-specific diacylglycerol kinase δ -knockout mice. *Brain Res* **1648**, 193–201.
- 6 Alinaghi S, Alehabib E, Johari AH, Vafaei F, Salehi S, Darvish H & Ghaedi H (2019) Expression analysis and genotyping of DGKZ: a GWAS-derived risk gene for schizophrenia. *Mol Biol Rep* **46**, 4105–4111.
- 7 Baum AE, Akula N, Cabanero M, Cardona I, Corona W, Klemens B, Schulze TG, Cichon S, Rietschel M, Nöthen MM *et al.* (2008) A genome-wide association study implicates diacylglycerol kinase eta (DGKH) and several other genes in the etiology of bipolar disorder. *Mol Psychiatry* **13**, 197–207.

- 8 Tabet R, Moutin E, Becker JAJ, Heintz D, Fouillen L, Flatter E, Kr zel W, Alunni V, Koebel P, Dembélé D *et al.* (2016) Fragile X mental retardation protein (FMRP) controls diacylglycerol kinase activity in neurons. *Proc Natl Acad Sci U S A* **113**, E3619–E3628.
- 9 Geoffroy A, Habbas K, Zambo B, Schramm L, Duchon A, Flatter E, Fouillen L, Zumsteg J, Heintz D, Mandel J-L *et al.* (2020) Pioglitazone improves deficits of Fmr1-KO mouse model of fragile X syndrome by interfering with excessive diacylglycerol signaling. *bioRxiv*.
- 10 Habbas K, Cakil O, Zámbo B, Tabet R, Riet F, Dembele D, Mandel J, Hocquemiller M, Laufer R, Piguet F *et al.* (2022) AAV-delivered diacylglycerol kinase DGKk achieves long-term rescue of fragile X syndrome mouse model. *EMBO Mol Med* **14**, e14649.
- 11 Shirai Y & Saito N (2014) Diacylglycerol kinase as a possible therapeutic target for neuronal diseases. *J Biomed Sci* **21**, 28.
- 12 Sakane F, Imai S i, Kai M, Yasuda S & Kanoh H (2007) Diacylglycerol kinases: why so many of them? *Biochim Biophys Acta Mol Cell Biol Lipids* **1771**, 793–806.
- 13 Franks CE, Campbell ST, Purow BW, Harris TE & Hsu KL (2017) The ligand binding landscape of diacylglycerol kinases. *Cell Chem Biol* **24**, 870–880.
- 14 Mérida I, Andrada E, Gharbi SI & Ávila-Flores A (2015) Redundant and specialized roles for diacylglycerol kinases α and ζ in the control of T cell functions. *Sci Signal* **8**, re6.
- 15 Harris BZ & Lim WA (2001) Mechanism and role of PDZ domains in signaling complex assembly. *J Cell Sci* **114**, 3219–3231.
- 16 Kumar M, Gouw M, Michael S, Sámano-Sánchez H, Pancsa R, Glavina J, Diakogianni A, Valverde JA, Bukirova D, Signalyševa J *et al.* (2020) ELM-the eukaryotic linear motif resource in 2020. *Nucleic Acids Res* **48**, D296–D306.
- 17 Hogan A, Shepherd L, Chabot J, Quenneville S, Prescott SM, Topham MK & Gee SH (2001) Interaction of γ 1-syntrophin with diacylglycerol kinase- ζ : regulation of nuclear localization by PDZ interactions. *J Biol Chem* **276**, 26526–26533.
- 18 Yakubchik Y, Abramovici H, Maillet J-C, Daher E, Obagi C, Parks RJ, Topham MK & Gee SH (2005) Regulation of neurite outgrowth in N1E-115 cells through PDZ-mediated recruitment of diacylglycerol kinase ζ . *Mol Cell Biol* **25**, 7289–7302.
- 19 Abramovici H, Hogan AB, Obagi C, Topham MK & Gee SH (2003) Diacylglycerol kinase- ζ localization in skeletal muscle is regulated by phosphorylation and interaction with syntrophins. *Mol Biol Cell* **14**, 4499–4511.
- 20 Kim K, Yang J, Zhong XP, Kim MH, Kim YS, Lee HW, Han S, Choi J, Han K, Seo J *et al.* (2009) Synaptic removal of diacylglycerol by DGK ζ and PSD-95 regulates dendritic spine maintenance. *EMBO J* **28**, 1170–1179.
- 21 Yang J, Seo J, Nair R, Han S, Jang S, Kim K, Han K, Paik SK, Choi J, Lee S *et al.* (2011) DGK1 regulates presynaptic release during mGluR-dependent LTD. *EMBO J* **30**, 165–180.
- 22 Rincón E, Santos T, Ávila-Flores A, Albar JP, Lalioti V, Lei C, Hong W & Mérida I (2007) Proteomics identification of sorting nexin 27 as a diacylglycerol kinase ζ -associated protein: new diacylglycerol kinase roles in endocytic recycling. *Mol Cell Proteomics* **6**, 1073–1087.
- 23 Tello-Lafoz M, Rodríguez-Rodríguez C, Kinna G, Loo LS, Hong W, Collins BM, Teasdale RD & Mérida I (2017) SNX27 links DGK ζ to the control of transcriptional and metabolic programs in T lymphocytes. *Sci Rep* **7**, 16361.
- 24 Zambo B, Morlet B, Negroni L, Trave G & Gogl G (2022) Native holdup (nHU) to measure binding affinities from cell extracts. *Sci Adv* **8**, eade3828.
- 25 Keilhauer EC, Hein MY & Mann M (2015) Accurate protein complex retrieval by affinity enrichment mass spectrometry (AE-MS) rather than affinity purification mass spectrometry (AP-MS). *Mol Cell Proteomics* **14**, 120–135.
- 26 Gogl G, Zambo B, Kostmann C, Cousido-Siah A, Morlet B, Durbesson F, Negroni L, Eberling P, Jané P, Nominé Y *et al.* (2022) Quantitative fragmentomics allow affinity mapping of interactomes. *Nat Commun* **13**, 5472.
- 27 Bohl J, Brimer N, Lyons C & Vande Pol SB (2007) The stardust family protein MPP7 forms a tripartite complex with LIN7 and DLG1 that regulates the stability and localization of DLG1 to cell junctions. *J Biol Chem* **282**, 9392–9400.
- 28 Weimer K, Zambo B & Gogl G (2023) Molecules interact. But how strong and how much? *Bioessays* **45**, 2300007.
- 29 Bich G, Monsellier E, Travé G & Nominé Y (2023) ProFeatMap: a highly customizable tool for 2D feature representation of protein sets. *Bioinform Adv* **3**, vbad022.
- 30 Sakarya O, Conaco C, Egecioğlu Ö, Solla SA, Oakley TH & Kosik KS (2010) Evolutionary expansion and specialization of the PDZ domains. *Mol Biol Evol* **27**, 1058–1069.
- 31 de Vienne DM (2016) Lifemap: exploring the entire tree of life. *PLoS Biol* **14**, e2001624.
- 32 Marchler-Bauer A & Bryant SH (2004) CD-search: protein domain annotations on the fly. *Nucleic Acids Res* **32**, W327–W331.
- 33 Escobar-Sepúlveda HF, Trejo-Téllez LI, Pérez-Rodríguez P, Hidalgo-Contreras JV & Gómez-Merino FC (2017) Diacylglycerol kinases are widespread in higher plants and display inducible gene expression

in response to beneficial elements, metal, and metalloid ions. *Front Plant Sci* **8**, 129.

- 34 Huang DW, Sherman BT & Lempicki RA (2009) Systematic and integrative analysis of large gene lists using DAVID bioinformatics resources. *Nat Protoc* **4**, 44–57.
- 35 Crooks GE, Hon G, Chandonia JM & Brenner SE (2004) WebLogo: a sequence logo generator. *Genome Res* **14**, 1188–1190.

Supporting information

Additional supporting information may be found online in the Supporting Information section at the end of the article.

Table S1. Results of native holdup mass spectrometry measurements with the C-terminal PDZ-binding motifs of diacylglycerol kinases.

Table S2. Results of affinity purification mass spectrometry measurements with the C-terminal PDZ-binding motifs of DGK ζ and DGK κ .

Table S3. Comparison of pKapp (nHU-MS) and enrichment values (AP-MS) of significant partners for DGK ζ .

Table S4. Comparison of PDZ-binding profiles of different diacylglycerol kinases using the ProfAff database.

Table S5. Diacylglycerol kinase sequences used in evolutionary analyses.