



HAL
open science

Non-canonical functions of UHRF1 maintain DNA methylation homeostasis in cancer cells

Kosuke Yamaguchi, Xiaoying Chen, Brianna Rodgers, Fumihito Miura, Pavel Bashtrykov, Laure Ferry, Olivier Kirsh, Marthe Laisné, Frédéric Bonhomme, Catalina Salinas-Luypaert, et al.

► **To cite this version:**

Kosuke Yamaguchi, Xiaoying Chen, Brianna Rodgers, Fumihito Miura, Pavel Bashtrykov, et al.. Non-canonical functions of UHRF1 maintain DNA methylation homeostasis in cancer cells. 2023. hal-04295168

HAL Id: hal-04295168

<https://hal.science/hal-04295168>

Preprint submitted on 20 Nov 2023

HAL is a multi-disciplinary open access archive for the deposit and dissemination of scientific research documents, whether they are published or not. The documents may come from teaching and research institutions in France or abroad, or from public or private research centers.

L'archive ouverte pluridisciplinaire **HAL**, est destinée au dépôt et à la diffusion de documents scientifiques de niveau recherche, publiés ou non, émanant des établissements d'enseignement et de recherche français ou étrangers, des laboratoires publics ou privés.

Copyright

Non-canonical functions of UHRF1 maintain DNA methylation homeostasis in cancer cells

Kosuke Yamaguchi^{1,*}, Xiaoying Chen¹, Brianna Rodgers¹, Fumihito Miura², Pavel Bashtrykov³, Laure Ferry¹, Olivier Kirsh¹, Marthe Laisné¹, Frédéric Bonhomme⁴, Catalina Salinas-Luypaert⁵, Andrea Scelfo⁵, Enes Ugur⁶, Paola B. Arimondo⁴, Heinrich Leonhardt⁶, Masato T. Kanemaki⁷, Daniele Fachinetti⁵, Albert Jeltsch³, Takashi Ito², Pierre-Antoine Defossez^{1,*}

1: Université Paris Cité, CNRS, Epigenetics and Cell Fate, F-75013 Paris, France.

2: Department of Biochemistry, Kyushu University Graduate School of Medical Sciences, Fukuoka, Fukuoka, 812-8582, Japan.

3: Institute of Biochemistry and Technical Biochemistry, Department of Biochemistry, University of Stuttgart, Allmandring 31, 70569 Stuttgart, Germany.

4: Institut Pasteur, Université Paris Cité, Epigenetic Chemical Biology, UMR 3523, CNRS, 75724 Paris, France

5: Institut Curie, PSL Research University, CNRS, UMR 144, Paris, France.

6: Faculty of Biology and Center for Molecular Biosystems (BioSysM), Human Biology and BiImaging, Ludwig-Maximilians-Universität München, Munich 81377, Germany.

7: Department of Chromosome Science, National Institute of Genetics, Research Organization of Information and Systems (ROIS), Yata 1111, Mishima, Shizuoka, 411-8540, Japan.

* Authors for correspondence:

yamako0801@icloud.com, pierre-antoine.defossez@cns.fr

Abstract

DNA methylation is an essential epigenetic chromatin modification, and its maintenance in mammals requires the protein UHRF1. It is yet unclear if UHRF1 functions solely by stimulating DNA methylation maintenance by DNMT1, or if it has important additional functions. Using degron alleles, we show that UHRF1 depletion causes a much greater loss of DNA methylation than DNMT1 depletion. This is not caused by passive demethylation as UHRF1-depleted cells proliferate more slowly than DNMT1-depleted cells. Instead, bioinformatics, proteomics and genetics experiments establish that UHRF1, besides activating DNMT1, interacts with DNMT3A and DNMT3B and promotes their activity. In addition, we show that UHRF1 antagonizes active DNA demethylation by TET2. Therefore, UHRF1 has non-canonical roles that contribute importantly to DNA methylation homeostasis; these findings have practical implications for epigenetics in health and disease.

Introduction

DNA methylation is an essential epigenetic mark in mammals. The methylation of cytosines, mostly in the CpG context, ensures the proper regulation of imprinted and tissue-specific genes, silences repeated elements, and contributes to the function of key functional elements of the genome such as centromeres^{1,2}.

The DNA methylation pattern observed in mammalian tissues is the result of a dynamic process. First, most of the cytosine methylation brought by the gametes is erased in early development, in a process that involves active demethylation by the TET enzymes³. Then, the proper tissue- and cell-specific methyl marks are re-established in the embryo starting at the time of implantation. This re-establishment of DNA methylation depends on "de novo" methyltransferases, of which two exist in humans: DNMT3A and DNMT3B⁴.

Even after cells have acquired their proper DNA methylation pattern, the overall stability of this pattern depends on a dynamic equilibrium of gains and losses of cytosine methylation. There can be local losses of DNA methylation due to TET activity, compensated by de novo DNA methylation, in the cell types that do express DNMT3A or DNMT3B. In addition, there is a global remodeling of DNA methylation at the time of DNA replication. Indeed, at this point, the two parental strands of DNA carrying cytosine methylation are separated, and each is used as a template for the synthesis of a daughter strand, which is initially totally devoid of cytosine methylation. It follows that every CpG that was symmetrically methylated before replication becomes hemimethylated. The process whereby the hemimethylated sites return to a fully methylated state is called "maintenance DNA methylation", and it involves two key actors: DNMT1 and UHRF1⁵.

The first crucial participant in maintenance DNA methylation is the enzyme DNMT1⁶. Unlike the de novo methyltransferases, DNMT1 is expressed in every replicating cell, and it has higher DNA methyltransferase activity on hemimethylated than on unmethylated sites. This specificity of DNMT1 comes in part from intramolecular inhibitions, which have to be lifted for the enzyme to come into action⁷. Some of the molecular mechanisms contributing to lifting this inhibition after DNA replication have been uncovered, and they involve the protein UHRF1⁸⁻¹⁰.

UHRF1 has an SRA domain that binds DNA with a preference for hemimethylated CpGs¹¹. It also has a Tandem Tudor Domain (TTD) which, together with the adjoining PHD domain, binds histone H3K9me3¹². In addition, the TTD domain binds an H3K9me3-like motif within DNA Ligase 1 (LIG1), which ligates Okazaki fragments on the lagging strand^{13,14}. These different interactions contribute to the recruitment of UHRF1 to replicating chromatin, where it can then modify histones. Its Ubiquitin-Like (UbL) domain cooperates with its RING finger^{15,16}, which then targets histone H3 for mono-ubiquitination at two positions, H3K14 and H3K18¹⁷. The H3K14Ub/K18Ub then binds with high affinity to the RFTS domain of DNMT1, relieving the auto-inhibition¹⁸. In a similar fashion, UHRF1 also mono-ubiquitinates the PCNA-associated factor PAF15, which can then bind the RFTS, freeing the catalytic domain of DNMT1¹⁹. To summarize, there is incontrovertible evidence that UHRF1 is an upstream activator of DNMT1, yet these advances leave some important questions open.

One such question is whether UHRF1 controls DNA methylation only by acting on DNMT1, or whether it also impinges on other epigenetic actors. Besides its importance for the biology of normal cells, this question is especially relevant for cancer. Indeed, the DNA methylation pattern of cancer cells has characteristic abnormalities, marked by global hypomethylation and focal hypermethylation²⁰, and these abnormalities are likely caused, at least in part, by imperfect DNA methylation maintenance²¹. In parallel, most tumors express

high levels of UHRF1²², overexpression of UHRF1 is oncogenic²², and UHRF1 is necessary for colon cancer cells to maintain their DNA methylation pattern and survive^{23,24}. Therefore, UHRF1 is a key regulator of the cancer epigenome, and it is important to elucidate its role, both for basic research and for medical purposes.

Therefore, the questions we address in this paper are: how does UHRF1 control DNA methylation in human cancer cells? Does it only stimulate DNMT1 or does it have other functions? If yes, which one(s)?

The model we chose to investigate the question in is colorectal cancer, a prevalent disease in which the contribution of epigenetic is solidly established. Earlier studies have yielded valuable information^{23,25}, but some of their conclusions have suffered from technical limitations. In particular, the loss-of-function approaches have been imperfect: siRNA has effects that are asynchronous, limited in time, and sometimes partial; shRNA can be partial or select for cells with the least depletion; constitutional knock-outs can lead to adaptation; whereas inducible knock-outs have delayed kinetics. In contrast, degron alleles have emerged as very powerful tools for loss-of-function studies, permitting rapid, total, and synchronous depletion of proteins of interest in cells²⁶.

We have generated and validated degron alleles of UHRF1 and/or DNMT1 in human colorectal cancer cell lines. We then used genomics and bioinformatics to precisely describe the DNA demethylation dynamics in these cells, leading to the conclusion that UHRF1 maintains DNA methylation in cancer cells not only by stimulating DNMT1. Proteomics and genetics lead us to conclude that UHRF1 regulates DNMT3A, DNMT3B and TET2 activity in addition to regulating DNMT1. The tools we have developed will be valuable for future research efforts, and our results advance our understanding of cancer epigenetics, with potentially important therapeutic applications.

Results

Establishment of degron alleles for UHRF1 and DNMT1 in colorectal cancer cell lines

To investigate the respective roles of DNMT1 and UHRF1 in cancer cells, we chose as a model the human colorectal cell lines HCT116 and DLD1, as they have been widely used to study the genetic and epigenetic events that cause and sustain transformation. Both lines have an activated Kras and microsatellite instability but maintain a near-diploid karyotype. HCT116 cells have functional p53, whereas DLD1 cells have mutated p53²⁷.

In these cells, we utilized the Auxin-Inducible Degron (AID) system to perform precisely controlled, rapid, and synchronous loss-of-function experiments²⁶. To prevent unwanted degradation of the target proteins in basal conditions, we employed HCT116 with a doxycycline-inducible OsTIR1²⁸, while we used the recently optimized F74G variant of OsTIR1 in the DLD1 background^{29,30}.

Using Cas9-mediated knock-in, we introduced the tags into the endogenous UHRF1 and/or DNMT1 genes in the HCT116 and DLD1 cell lines, and both genes simultaneously in HCT116 (Fig. 1A-B, Fig. S1A). As UHRF1 can be inactivated by N-terminal modifications^{15,16}, we inserted the AID tag at the C-terminus along with the green fluorescent protein, mClover (Fig. 1A). In contrast, N-terminal tagging of DNMT1 can be used to generate a degron allele³¹. For this reason, we placed the AID tag at the N-terminus of DNMT1, accompanied by the red fluorescent protein mRuby2 (Fig. 1A). Three independent clones were generated for each construct and used in further experiments (Fig. 1C, Fig. S1B).

Characterization and validation of the tagged cell lines

Having obtained the lines of the desired genotypes, we then characterized them by growth assays, microscopy, and DNA methylation measurements. In the absence of auxin, the UHRF1-AID, DNMT1-AID, or UHRF1-AID/DNMT1-AID cells grew indistinguishably from the parental HCT116 or DLD1 cells (Fig. S1C-E). We next examined the localization of tagged UHRF1 and DNMT1. In fixed cells, both proteins were nuclear with some colocalizing foci (Fig. 1D). In live-cell microscopy, we found, as expected, that DNMT1 and UHRF1 had a dynamic nuclear distribution and formed colocalizing foci during S phase (Supplemental Movies 1-3).

We further verified the functionality of the tagged proteins by measuring DNA methylation levels in HCT116 derivatives by 3 independent methods: a restriction-enzyme-based assay (LUMA), liquid chromatography followed by tandem mass spectrometry (LC-MS/MS), and whole genome bisulfite sequencing (WGBS). These data showed no significant difference between parental and single AID-tagged cells in HCT116, yet the compound UHRF1-AID/DNMT1-AID line showed ~10% less DNA methylation than its wild-type counterpart (Fig. 1E). We also carried out LUMA in the DLD1 derivatives and found that the UHRF1-AID and DNMT1-AID cells had a small but significant reduction of DNA methylation (6% less than in the WT, Fig. S1F).

Collectively these results confirm that the tags added to UHRF1 and DNMT1 do not measurably affect cell viability, growth, or nuclear localization, and have minimal effects on DNA methylation, therefore validating their use for functional analyses.

The depletion of UHRF1 and/or DNMT1 is efficient and causes growth arrest

After validating these basal conditions, we next tested the effects of triggering the degradation of UHRF1 and/or DNMT1 in the AID-tagged cell lines. Western blotting revealed that, as early as two hours after treatment with auxin, UHRF1 and/or DNMT1 protein levels in

HCT116 and DLD1 cells became undetectable, and that this depletion persisted as long as auxin was present (Fig. 2A; Fig. S2A). We have noted in 3 independent clones that the degradation of DNMT1 and UHRF1 in the compound mutant cells is equally rapid but incomplete by ~ 8 hour after treatment with auxin, for reasons that are yet undetermined (Fig. 2A).

We then measured cell proliferation after auxin addition, using Incucyte videomicroscopy. The control cells (expressing OstTIR1 but having no AID-tagged protein) grew vigorously in the presence of auxin, as expected. However, cells depleted for UHRF1 and/or DNMT1 proliferated significantly slower than the control cells (Fig. 2B). This decrease in cell proliferation was markedly more pronounced after UHRF1 depletion than after DNMT1 depletion, and the compound UHRF1/DNMT1 depletion had a slightly stronger effect than the single UHRF1 depletion (Fig. 2B). Incucyte measurements detect confluency, which depends not only on the number of cells but on their size as well, so we also performed standard cell counting; these data confirmed the slower proliferation in UHRF1-depleted compared to DNMT1-depleted HCT116 cells (Fig. 2C). A similar trend was seen in DLD1 cells, where UHRF1 depletion led to a stronger inhibition of proliferation than DNMT1 depletion (Fig. S2B).

A previous study has reported that inducible DNMT1-KO in HCT116 cells caused mitotic catastrophe and apoptosis within 4 days³², so we sought to determine whether the decrease in cell proliferation may result from cell death. For this, we measured cell viability with trypan blue staining every four days after auxin treatment, but we did not detect any significant cell viability loss (Fig. S2C). Together these results indicate: that UHRF1 and/or DNMT1 depletion occurs effectively in the AID-tagged cell lines; that this depletion leads to profound growth retardation without detectable cell death; and that UHRF1 depletion has a more severe effect than DNMT1 depletion.

Genetic rescues identify the domains of UHRF1 and DNMT1 critical for supporting growth

We next investigated the mechanism underlying the growth retardation. For this, we used genetic rescue of the AID-tagged HCT116 cell lines with DNMT1 and UHRF1 variants bearing point mutations in their critical domains (Fig. 2D). All the mutant proteins were expressed at levels similar to, or slightly higher than, the corresponding endogenous protein (Fig. S2D-E).

For the UHRF1 rescue constructs, we observed that the exogenously expressed WT and TTD mutant rescued cell proliferation to a similar extent (Fig. 2E). In contrast, inactivating the UBL, PHD, SRA, or RING domain rendered UHRF1 non-functional for supporting growth (Fig. 2E).

The WT DNMT1 construct and its PBD mutant derivatives both rescued the cell proliferation (Fig. 2F). In contrast, the UIM mutant, H3K9me3 binding motif mutant, or catalytically inactive form of DNMT1 were all unable to rescue the slow growth phenotype.

To summarize, some but not all of the domains of UHRF1 and DNMT1 are required to support cell proliferation in HCT116 cells. The links between the proliferation defect and DNA methylation loss are explored in the following sections.

UHRF1 depletion induces a more severe DNA methylation loss than DNMT1 depletion

We then examined the dynamics of DNA methylation loss upon removal of UHRF1 and/or DNMT1. As above, we started our experiments with the HCT116 cells and used 3 independent methods that measure DNA methylation levels: LUMA, LC-MS/MS, and shallow-coverage WGBS (Fig. 3A).

LUMA showed that the parental cells (WT) displayed no change in DNA methylation over the course of a 12-day auxin treatment. In contrast, cells depleted of UHRF1 and/or DNMT1 progressively lost DNA methylation, as expected (Fig. 3A). Strikingly, UHRF1 depletion caused a markedly stronger loss than DNMT1 depletion; for instance, 6 days after treatment, the percentage of restriction-resistant sites was ~75% in WT cells, ~55% in DNMT1-depleted cells, and ~40% in UHRF1-depleted cells (Fig. 3A). The cells depleted for both UHRF1 and DNMT1 had a slightly stronger loss than the cells lacking UHRF1 only.

LC-MS/MS and WGBS results were fully consistent with the LUMA data (Fig. 3B-C). In addition, LUMA on DLD1 degron cells showed that UHRF1 depletion caused a more severe loss of methylation than DNMT1 depletion in this cellular background as well (Fig. S3A).

Lastly, we used LUMA after auxin treatment to verify which of the rescue constructs can maintain DNA methylation levels following degradation of the endogenous UHRF1 or DNMT1 proteins (Fig. S3B-C). The only mutant form of UHRF1 supporting DNA methylation maintenance was the TTD mutant (Fig. S3B), while the only mutant form of DNMT1 that retained activity towards DNA methylation was the PBD mutant (Fig. S3C). Therefore, for the 9 variants of UHRF1 and DNMT1 that we have tested, there is a one-to-one correspondence between the ability to support growth, and the ability to maintain DNA methylation.

Together these results further suggest that loss of DNA methylation underpins the growth retardation of the various degron lines treated with auxin. In addition, they show that UHRF1 depletion causes a more severe loss of DNA methylation than DNMT1 depletion, in parallel with a more severe growth retardation. Importantly, the slower growth of UHRF1-depleted cells rules out passive dilution of DNA methylation as an explanation for the greater loss of methylation they experience, when compared to DNMT1-depleted cells.

UHRF1 depletion decreases DNA methylation at DNMT1, DNMT3A, and DNMT3B target sites

Our previous data clearly suggested that the role of UHRF1 in DNA methylation homeostasis goes beyond its canonical function of promoting DNMT1 activity. To get deeper insight into the mechanism(s) underlying this phenomenon, we performed deep-coverage WGBS, focusing on the early time points after auxin addition (days 0, 2, 4), which showed interesting dynamics yet minimize secondary effects due to growth differences.

For our analysis, we segmented the genome into 1-kb bins. Four days after auxin addition, cells lacking DNMT1 showed ~600,000 tiles that had lost 25% or more DNA methylation relative to day 0. However, that number was over twice as great in the UHRF1-depleted cells, which showed more than 1.3 million demethylated tiles (Fig. 4A). The joint depletion of UHRF1 and DNMT1 had an effect similar to, but slightly stronger than, UHRF1 depletion alone. A similar analysis performed only 2 days after auxin addition yielded similar results, albeit with smaller numbers of demethylated tiles (Fig. S4A). The Venn diagrams of Fig. 4B and S4B illustrate that most of the tiles demethylated after DNMT1 depletion were also demethylated after UHRF1 depletion.

We then refined this analysis by looking at distinct genomic regions (Fig. S4C). The loss of DNA methylation in UHRF1 and/or DNMT1-depleted cells is pervasive and affects promoters, gene bodies, and intergenic regions. However, we noticed that gene bodies in particular experience greater loss of DNA methylation upon UHRF1 depletion than upon DNMT1 depletion (Fig. S4C).

Gene-body methylation involves the de novo methyltransferases DNMT3A and DNMT3B³³⁻³⁵, so the results prompted us to examine whether UHRF1 might have an effect on the targets of DNMT3A and DNMT3B, which are expressed in HCT116 cells.

In previous studies, kinetic DNA methylation studies performed with randomized oligonucleotides have determined systematically which flanking sequences are favored by DNMT1, DNMT3A, and DNMT3B *in vitro*, and the *in vitro* preferences are reflected in the cellular DNA methylation patterns^{36–40}. We have exploited these data in the following manner (Fig. 4C): for each of the enzymes, we created a table in which the 256 possible NNCGNN sequences are ranked by order of preference *in vitro*. In parallel, we ranked the 256 possible NNCGNN sequences by average methylation level in each point of our WGBS dataset. Then we calculated pairwise Pearson *r*-correlation coefficients between the *in vitro* preferences and the actual WGBS values. This bioinformatic approach quantifies how much the flanking sequence preferences of a particular enzyme match to the actual genome-wide methylation in cells.

Fig. 4C shows the results for 4 conditions: DNMT1-AID and UHRF1-AID cells, each before and 4 days after auxin addition. The data show that, before auxin is added, there is high correlation between the *in vitro* DNMT1 and DNMT3A preferences, and the actual average methylation levels in NNCGNN bins observed in cells, suggesting that these two enzymes have a strong contribution in shaping the methylome of HCT116 cells under our experimental conditions, which is not the case for DNMT3B (correlation score close to zero). When DNMT1 was depleted by auxin addition, its most preferred target sites were no longer among the most methylated ones, as the correlation coefficient dropped from 0.423 to 0.183. In contrast, the sites favored by DNMT3A were less affected, as the coefficient only marginally declined from 0.443 to 0.338. Therefore, DNMT1 depletion seems to affect preferentially DNMT1 target sites, as expected, providing a validation of our analysis.

After UHRF1 depletion, the preferred DNMT1 sites lost methylation as well, which was also expected. Notably, the drop was more profound after UHRF1 depletion (from 0.436 to -0.078) than after DNMT1 depletion. As DNMT1 is already completely depleted in the DNMT1-AID cells, this means that another activity contributing to methylation of the DNMT1 sites is also decreased in the UHRF1-AID cells. Interestingly, UHRF1 depletion also had a very strong effect on the DNMT3A sites, for which the correlation score went from 0.430 to 0.070, suggesting that the enzyme was no longer a major contributor to the DNA methylation pattern. The values for DNMT3B went from 0.040 to -0.451, indicative of a strong anticorrelation, and meaning that the best DNMT3 sites actually fell among the least methylated sites when UHRF1 was removed.

To summarize, this rich dataset shows that UHRF1 depletion leads to profound decreases of DNA methylation not just at the best DNMT1 target sites, but also at the best DNMT3A and DNMT3B target sites suggesting that UHRF1 also has a role in DNMT3A and DNMT3B mediated DNA methylation.

We obtained further support for this scenario by examining DNA methylation losses at H3K36me3-marked CpG islands, which are a well-described target of *de novo* methyltransferases in HCT116 cells³⁴. We extracted from our WGBS data the methylation values for CpG islands and ranked them in 10 bins according to their H3K36me3 content (Fig. 4D). CpG islands with low levels of H3K36me3 lost the same amount of DNA methylation after UHRF1 depletion or after DNMT1 depletion: the methylation difference between these two conditions was close to zero. In contrast, CpG islands with higher levels of H3K36me3 lost significantly more methylation when UHRF1 was removed than when DNMT1 was removed (Fig. 4D). As a control, we carried out the same analysis with H3K79me2, another histone mark that is also found in gene bodies but is not associated with *de novo* DNA methyltransferases (Fig. S4D). In that case we found no correlation between H3K79me2 levels and reliance on

UHRF1. This analysis shows that regions of the genome that are especially reliant on de novo methyltransferases to gain DNA methylation are also especially reliant on UHRF1 to maintain their DNA methylation.

Physical, functional, and genetic interactions between UHRF1 and the de novo methyltransferases

To test a possible physical association between UHRF1 and DNMT3A or DNMT3B, we performed a series of co-immunoprecipitation (co-IP) experiments. These experiments showed that UHRF1 indeed interacts with both DNMT3A and DNMT3B (Fig. 5A); furthermore the TTD domain was sufficient for interaction (Fig. 5A). We repeated these co-IP with full-length UHRF1 in the presence of Ethidium Bromide and obtained identical results, indicating that the interactions are not bridged by chromatin (Fig. S5A-B).

Work with UHRF1 deletion mutants showed that the TTD and PHD domain were necessary for interaction with DNMT3A and DNMT3B, whereas the UBL, SRA, and RING finger were not (Fig. 5B). As the experiments pointed to an important role of the TTD, we performed a last series of co-IP experiments, with a mutant form of UHRF1 that is full-length but has two mutations (Y188A/Y191A) that inactivate the hydrophobic pocket of the TTD. The mutations significantly reduced the capacity of UHRF1 to interact with both DNMT3A and DNMT3B (Fig. 5C). To summarize, we detect a physical interaction between UHRF1 and the two de novo methyltransferases in HCT116 cells, this interaction involves the TTD, and it is not indirectly mediated by chromatin.

We identified a further mechanistic link between UHRF1 and the de novo methyltransferases by a fully independent approach. We used a recently developed proteomic approach⁴¹ to characterize the "chromatome" of our cell lines at various time points after DNMT1 or UHRF1 depletion (Fig. S5C). One of the proteins that was less abundant in chromatin after UHRF1 removal than after DNMT1 removal was DNMT3B (Fig. S5D). We carried out western blotting on whole-cell lysates and found that UHRF1 depletion had no discernible effect on the amount of DNMT1 or DNMT3A, but that it led to a decrease of DNMT3B abundance, while DNMT1 depletion had no such effect (Fig. 5D). The decrease of DNMT3B on chromatin in the absence of UHRF1 is therefore mirrored in whole-cell extracts.

We then explored the genetic interactions between UHRF1, DNMT1, DNMT3A, and DNMT3B. For this, we generated CRISPR knockouts of DNMT3A and DNMT3B in the DNMT1-AID and UHRF1-AID lines (Fig. S5E), and observed their effects on DNA methylation levels. As expected, removing DNMT3A and DNMT3B from the DNMT1-AID line (D3AB DKO derivative) led to a greater loss of DNA methylation upon auxin treatment (Fig. 5E). In contrast, the D3AB DKO mutations did not make the loss of methylation more severe in the UHRF1-AID line (Fig. 5E). This important result suggests that UHRF1 does not act in parallel to, but instead upstream of, DNMT3A and DNMT3B, which is consistent with our co-IP results.

Lastly, these genetic experiments brought another crucial conclusion: the DNMT1-AID/DNMT3A KO/DNMT3B KO, which are completely devoid of DNMT activity upon auxin addition, still lose DNA methylation more slowly than the UHRF1-AID line treated with auxin (Fig 5E). Therefore, besides stimulating the activity of the DNA methyltransferases, UHRF1 must be preserving DNA methylation homeostasis by at least one other mechanism.

UHRF1 opposes active demethylation by TET2

To guide the next set of experiments, we went back to our WGBS data. The sequence preferences of TET1 and TET2 have been identified *in vitro*⁴², and we asked whether the

optimal target sites of these enzymes were particularly likely to lose methylation in the absence of DNMT1 or UHRF1. We used the same workflow described earlier in Fig. 4C, and calculated correlation coefficients between WGBS-derived methylation data and in vitro data for the TET enzymes (Fig. 6A).

We found that the optimal TET1 and TET2 sites became strongly hypomethylated upon DNMT1 removal (correlation coefficients of -0.330 and -0.451 respectively). However, the demethylation at these sites became even more marked after UHRF1 was removed (coefficients of -0.451 and -0.579 respectively). This result is compatible with heightened TET action upon UHRF1 removal, suggesting that UHRF1 might oppose TET activity.

We tested this possibility genetically, focusing on TET2, which is the more expressed enzyme in HCT116 cells. For this, we generated stable shTET2 derivatives of our UHRF1-AID, DNMT1-AID, and UHRF1-AID/DNMT1-AID HCT116 lines. The knockdown efficiency was ~80% at the mRNA level (Fig. 6B). We then measured DNA methylation by the LUMA assay in the various shCtrl and shTET2 lines, before and after auxin addition.

In the absence of auxin treatment, shTET2 led to a small but significant increase of DNA methylation, only in the DNMT1-AID and UHRF1-AID/DNMT1-AID lines (Fig. S6A). Upon 4 days of auxin treatment, the UHRF1-AID, DNMT1-AID, and compound UHRF1-AID/DNMT1-AID lines expressing non-targeting shRNA lost DNA methylation to various extents, with the cells lacking UHRF1 losing more DNA methylation than the cells lacking DNMT1 (Fig. 6C), which agrees with all of our previously presented data.

We then examined the effects of shTET2 combined with auxin treatment. In the DNMT1-AID line, the shTET2 did not rescue the DNA methylation loss, suggesting that active demethylation by TET2 is not the main contributor in this situation. In contrast, the shTET2 did significantly alleviate the DNA methylation loss experienced by UHRF1-AID or UHRF1-AID/DNMT1-AID cells (Fig. 6C). This key result establishes that TET2 activity contributes to DNA methylation loss when UHRF1 is absent, but not when DNMT1 is absent. Similar results were obtained after 8 days of auxin depletion (Fig. S6B). In addition, we measured cell proliferation in all the cell lines to eliminate possible confounding factors (Fig. S6C). In all cases, the shTET2 derivatives grew faster than the matched shControl line. Therefore, shTET2 does not preserve DNA methylation in UHRF1-depleted cells by preventing passive DNA methylation.

We therefore conclude that UHRF1 protects the genome against TET2 activity, which contributes to the more severe DNA hypomethylation seen in UHRF1-depleted cells, as compared to DNMT1-depleted cells, or even cells lacking all three DNMTs (See model in Fig. 7).

Discussion

Using degron tools, we have carried out a precise time-resolved analysis of DNA methylation loss upon removal of UHRF1, DNMT1, or both. Our genomics data coupled to genetic experiments show that, in addition to its well-described role as an activator of DNMT1, UHRF1 also interacts functionally with DNMT3A and DNMT3B. In addition, we show that UHRF1 opposes the DNA demethylating activity of TET2. Besides their conceptual importance, these findings may be relevant for developing novel cancer therapies.

A powerful tool to study UHRF1 and DNMT1 function

We generated colorectal cancer cell lines in which the endogenous copies of UHRF1 and/or DNMT1 are tagged with fluorescent markers as well as degron tags, allowing for their rapid and controlled depletion. These cell lines constitute a valuable resource for research into the dynamics and functions of these two essential epigenetic regulators.

In the absence of auxin, the fluorescently labeled UHRF1 and DNMT1 proteins appear fully functional (Fig. 1D and Supplemental Movies). This provides an ideal system with which to study the abundance, localization and dynamics of these two key epigenetic actors. For instance, a chemical screen to identify regulators of UHRF1 protein stability has previously been carried out with an exogenous UHRF1-GFP protein⁴³, and it may be worthwhile to repeat it on the endogenously tagged protein.

In addition, we chose the mClover/mRuby fluorescent protein pair because it can be used for FRET analysis⁴⁴. This opens up opportunities for future work, including high-content microscopy screens^{45,46} to identify chemical compounds or genes that regulate the colocalization of endogenous UHRF1 and DNMT1.

The proteins are rapidly, fully, and synchronously degraded upon auxin addition, allowing us to examine DNA demethylation dynamics upon removal of the key regulators. This question has been addressed in the past, for instance by using shRNA²³ or by transfecting the Cre protein into conditional KO cells⁴⁷. However our degron approach has unprecedented temporal resolution and population homogeneity, permitting more precise analyses.

Our system also lends itself to rescue experiments, allowing us to examine which domains of UHRF1 and DNMT1 are essential for their function. The results we obtained confirmed earlier results obtained with other systems, such as shRNA²³. However, the better kinetics and homogeneity of the degron system make it possible to consider more systematic screens, such as alanine scanning mutagenesis of the entire proteins in order to reveal new critical positions. This would be a useful complement to other approaches addressing the same question, such as high-density CRISPR scanning⁴⁸.

Lastly, the degron system is reversible upon auxin removal, and can be coupled to cell synchronization. These features will be valuable in designing future experiments addressing the roles of UHRF1 and DNMT1 in the different phases of the cell cycle.

Roles of UHRF1 and DNMT1 in cancer cell proliferation or viability

The addition of auxin to our AID-tagged cells leads to a rapid and extensive decrease in UHRF1 and/or DNMT1 protein abundance. This leads to a severe impairment of cell growth both in HCT116 and DLD-1 cells, yet the cells maintain viability.

These results are consistent with a recent report describing DNMT1-degron cells³¹, yet they contrast with earlier publications: most notably, the inducible deletion of the DNMT1 gene in HCT116 cells has been reported to cause a G2 arrest, eventually followed by escape and mitotic catastrophe³². Possible causes for this discrepancy with our observations might

include the removal of an uncharacterized important genetic element along with the targeted DNMT1 genomic sequence and/or the expression at low levels of a truncated DNMT1 protein that has negative consequences in the knockout cells. However, we cannot rule out the possibility that minute amounts of DNMT1 escaping degradation in our system are sufficient to promote survival.

Similarly, previous reports in which UHRF1 was depleted by siRNA or shRNA reached various conclusions as to the effects of the depletion^{23,25}. Removal of the protein by a CRISPR KO has been attempted, but only yielded hypomorphs⁴⁹, suggesting that the protein might be essential. In our study, we observed a strong cell proliferation defect after UHRF1 depletion compared with WT cells (Fig. 2B, C). This likely explains why UHRF1 KO have not yet been reported in cancer cells. It also suggests that caution should be exercised when carrying out and interpreting siRNA or shRNA experiments on UHRF1, as the least depleted cells will have a growth advantage over the most depleted ones.

The mechanisms underpinning the essentiality of UHRF1 and DNMT1 for long-term cancer cell proliferation have been suggested to be linked with their role in DNA methylation homeostasis²³. Our rescue experiments are compatible with this hypothesis, as mutants that rescue DNA methylation also rescue growth, and vice versa. However, the number of mutants we and others have examined is still limited, and the mutations studied, such as the RING finger inactivation, may affect other important functions in addition to DNA methylation maintenance. The tools we have developed may help reveal if the functions of DNMT1 and UHRF1 in cell proliferation and DNA methylation maintenance are indeed fully linked, or whether they can be dissociated.

Functional and physical interaction between UHRF1, DNMT3A and DNMT3B

There have been some indications in the past that UHRF1 might be connected to the de novo DNA methylation machinery⁵⁰⁻⁵² but our results now rigorously establish this connection, ground it in molecular detail, and determine its effects on DNA methylation genome-wide.

The physical interaction between proteins involves the TTD of UHRF1 and, more precisely still, its hydrophobic pocket. Our co-immunoprecipitations in the presence of Ethidium Bromide eliminate the possibility that the interaction is bridged by chromatin, however we cannot presently conclude whether the interaction is direct, or involves other unknown factors. We note that DNMT3A contains a histone-like TARK motif that is methylated on the lysine by G9A and GLP⁵³. This situation is reminiscent of other proteins directly bound by the TTD, namely histone H3 and DNA Ligase 1^{13,14}. Thus, one possibility for future exploration will be to test the possibility that UHRF1 interacts directly with the TARK motif of DNMT3A.

We find that depleting UHRF1 leads to decreased abundance of the DNMT3B protein, without affecting DNMT1 or DNMT3A (Fig. 5D). Additional experiments could be carried out in the future to identify the underlying mechanism which could be direct or indirect, for example depending on the fact that methylated nucleosomes appear to stabilize DNMT3B⁵⁴.

Lastly, we have carried out our experiments in human cancer cells, but it will be worthwhile in the future to clarify whether UHRF1 also promotes DNMT3A/DNMT3B activity in other systems, such as mouse embryonic stem cells.

UHRF1 inhibits TET2 activity

Our epistasis studies reveal that TET2 contributes to DNA demethylation more actively when UHRF1 is absent. This finding may at first sight appear discordant with a recent report, which

found that UHRF1 actually recruits the short form of TET1 to heterochromatin, where it catalyzes DNA hydroxymethylation⁵⁵. However, disparities in cellular systems, coupled to dissimilarities between TET1 and TET2, could contribute to the contrast between our results. Also, we note that the recruitment of TET1 by UHRF1 appears to be limited to the late S-phase, and could be counterbalanced by other processes in other phases of the cell cycle.

At this stage, we cannot say if the decreased TET2 action is due to an inhibition at the level of transcription, translation, stability, or activity of the protein. However, an interesting parallel might possibly be drawn with results obtained in mouse ES cells, where UHRF1 has been proposed to inhibit SETDB1 activity by binding hemimethylated DNA⁵⁶. A similar regulation might occur between UHRF1 and the TETs.

UHRF1 as a therapeutic target in cancer

Cancer cells have an aberrant epigenome, and this creates opportunities for anti-tumoral therapies⁵⁷. Among the various epigenetic marks, DNA methylation has been validated as a valuable target²⁰. The DNMT1 inhibitor 5-aza-cytidine is successfully used in the clinic against Myelodysplasia and Acute Myeloid Leukemia but has limitations such as high toxicity, rapid degradation, and emergence of resistance⁵⁸. The new generation of selective DNMT1 inhibitors that has been developed⁵⁹ may alleviate some of those issues, yet these molecules still trigger DNMT1 degradation⁶⁰, which might have unwanted side effects. Our data point out that an altogether different strategy may be viable, by targeting UHRF1 instead of DNMT1, which justifies drug design efforts currently ongoing in the community⁶¹⁻⁶⁴. As with any essential protein, one of the challenges will be to identify a therapeutic dosage window and/or appropriate delivery methods such that cancer cells are harmed while healthy cells are spared. It is possible that the high expression levels of UHRF1 in tumors^{22,23} will provide such a window. Altogether, our work reveals new, non-canonical functions of UHRF1, and open up avenues for further exploration of this key epigenetic regulator in normal cells and in disease.

Materials and Methods

Plasmid Construction

We utilized the pX330-U6-Chimeric_BB-CBh-hSpCas9 plasmid, obtained from Feng Zhang (Addgene #42230), as the basis for constructing CRISPR/Cas vectors. The construction process followed the protocol outlined by Ran et al.⁶⁵. To generate the mAID donor plasmids, we modified constructs of the Kanemaki lab (Addgene #72827 and #121180). In order to incorporate mRuby2, we replaced mCherry2 in the donor plasmid (Addgene #121180).

For the rescue experiments, wild-type (WT) UHRF1 and each of the point mutants (M8R/F46V, Y188A, DAEA, G448D, and H741A) were cloned into pLenti6.2/V5-DEST (Invitrogen). Likewise, WT DNMT1 and each of the point mutants (H170V, D381A/E382A/S392A, W464A/W465A, C1226W) were cloned into pSBbi-Bla (Addgene: #60526). To target DNMT3A and DNMT3B, we cloned the oligonucleotide sequences for gRNA into the lentiCRISPR v2-Blast vector (Addgene #83480). Additionally, we cloned the shRNA targeting TET2 into the pLKO.1-blast vector (Addgene #26655). Plasmids were generated using PCR, restriction enzymes, or Gibson Assembly Cloning techniques. All plasmids underwent sequencing prior to their utilization. The oligonucleotide sequences inserted into the lentiCRISPR v2-Blast vector and pLKO.1-blast vector are available in Supplementary File 1.

Cell Culture, Transfection, and Colony Isolation

The HCT116 cell line, which conditionally expresses OsTIR1 under the control of a tetracycline (Tet)-inducible promoter, was obtained from the RIKEN BRC Cell Bank (<http://cell.brc.riken.jp/en/>) and genotyped by Eurofins. HCT116 cell lines were cultured in McCoy's 5A medium (Sigma-Aldrich), supplemented with 10% FBS (Gibco), 2 mM L-glutamine, 100 U/mL penicillin, and 100 µg/mL streptomycin. The DLD1 cell line, which constitutively expresses OsTIR1 (F74A), was provided by the Kanemaki Lab. DLD1 cell lines were cultured in RPMI-1640 medium (Sigma-Aldrich), supplemented with 10% FBS (Gibco), 2 mM L-glutamine, 100 U/mL penicillin, and 100 µg/mL streptomycin. Both cell lines were maintained in a 37°C humid incubator with 5% CO₂.

To establish stable cell lines, cells were seeded in a 24-well plate and transfected with CRISPR/Cas and donor plasmids using Lipofectamine 2000 (Thermo Fisher Scientific). Two days post-transfection, cells were transferred and diluted into 10-cm dishes, followed by selection in the presence of 700 µg/ml G418 or 100 µg/ml Hygromycin B. After a period of 10-12 days, colonies were individually picked for further selection in a 96-well plate.

For the induction of AID-fused protein degradation in HCT116 cell lines, cells were seeded and incubated with 0.2 µg/mL doxycycline (Dox) and 20 µM auxinole for one day. Subsequently, the medium was replaced with fresh medium containing 0.2 µg/mL Dox and 500 µM indole-3-acetic acid (IAA), a natural auxin. Similarly, to induce AID-fused protein degradation in DLD1 cell lines, cells were seeded and incubated with regular medium for one day, followed by medium replacement with 1 µM 5-Ph-IAA.

Confocal microscopy analysis

Cells were fixed in 2% paraformaldehyde at room temperature for 10 min. After fixation, cells were permeabilized with 0.5% Triton X-100 in PBS for 10 min at 4°C, then washed with PBS. Cells were mounted with ProLong Diamond Antifade Mountant with DAPI (P36961, Thermo Fisher Scientific). Images were obtained using a Leica DMI6000 (Leica Microsystems).

Videomicroscopy analysis

For live cell imaging, cells were grown on 35 mm FluoroDish (World Precision Instruments) with 0.17 mm thick optical quality glass bottom and fitted with a 4-well silicone insert (Ibidi). Timelapse images were taken every 10 minutes for 20 hours using an inverted Eclipse Ti-E microscope (Nikon) equipped with a CSU-X1 (Yokogawa) spinning disk integrated in Metamorph software, and a 4-laser bench (Gataca systems). ~45 μm Z stacks were acquired (Z-step size: 3 μm) with a 60 \times CFI Plan Apo VC oil-immersion objective (numerical aperture 1.4). The microscope has a motorized Nano z100 piezo stage (Mad City Lab), a stage top incubator (Tokai Hit) and an EMCCD camera (Evolve, Photometrics). The images were 3D deconvolved using the NIS Elements software (Nikon).

Infection/ transfection for rescue experiments

The generation of lentiviral or Sleeping Beauty transposon vectors followed the methodology of "Plasmid Construction." Subsequently, the cell lines were either infected or transfected with WT, UHRF1-AID, DNMT1-AID, or UHRF1/DNMT1-AID. To ensure stable expression of the target genes or shRNA, the infected or transfected cells were incubated with 10 $\mu\text{g}/\text{mL}$ Blasticidin for a period of one week, allowing for the selection of stable cell populations.

Western blot analysis

Cells were harvested after trypsinization, washed twice with PBS, and lysed with RIPA buffer (Sigma-Aldrich) with protease inhibitor (1 mM phenylmethanesulfonyl fluoride and 1 x Complete Protease Inhibitor Cocktail; Roche), then sonicated with a Bioruptor (Diagenode). The sonicated samples were centrifuged at 16,000 g for 15 min, then the supernatants were subjected to the Bradford Protein Assay Kit (BioRad). Equivalent amounts of protein were resolved by SDS-PAGE and then transferred to a nitrocellulose membrane. The primary antibodies used for western blot analysis are listed in Supplementary File 2.

Cell proliferation assay

For cell proliferation studies, HCT116 cells were seeded at a density of 5,000 cells per well in a 96-well plate. They were then treated with 0.2 $\mu\text{g}/\text{mL}$ Dox and 20 μM auxinole for one day. Following this, the medium was replaced with fresh medium containing 0.2 $\mu\text{g}/\text{mL}$ Dox and 500 μM IAA. Throughout the experiment, images were captured every 2 hours using an IncuCyte ZOOM microscope (Essen Bioscience). The IncuCyte ZOOM software was utilized to determine the cell confluency (%) based on the acquired images.

To obtain cell count data and assess cell viability, trypan blue staining was performed after every 4 days of auxin treatment. The TC20 Automated Cell Counter (BioRad) was used to obtain the cell count data and calculate the cell viability rate.

DNA methylation analysis

LUMA and Pyrosequencing analyses were conducted following standard procedures. Whole-genome bisulfite sequencing (WGBS) libraries were prepared using the tPBAT protocol, as described by Miura et al^{66,67}. The library preparation involved using 100 ng of genomic DNA spiked with 1% (w/w) of unmethylated lambda DNA from Promega. Subsequently, sequencing was carried out by Macrogen Japan Inc. utilizing the HiSeq X Ten system.

To process the sequenced reads, BMap was employed to map them to the hg38 reference genome. The mapping information was then summarized using an in-house pipeline, which has been previously described⁶⁷. Custom scripts for this pipeline can be

accessed via GitHub at the following link: <https://github.com/FumihitoMiura/Project-2>. A summary of the mapping information can be found in Supplementary File 3.

Once the methyl reports data was obtained, methylKit was utilized to determine the methylation levels of individual CpG sites and identify differential methylated regions (DMRs). In this analysis, DMRs were defined as having a methylation difference greater than 25% and a q-value lower than 0.01.

Flanking sequence analysis

Genome-wide DNA methylation profiles were used to extract methylation level of individual CpG sites and their flanking sequences as described earlier⁶⁸. CpGs with sequences coverage ≥ 10 were included in the downstream analysis. Enzymes' flanking sequence profiles were combined from published data^{37-40,42}. Pearson r-values were determined with Microsoft Excel. Symmetrical preference profiles for DNMT3A and DNMT3B were generated by averaging the preferences of pairs of corresponding complementary flanks³⁶.

ChIP-seq analysis

ChIP-seq data for HCT116 cells was obtained from ENCODE. Upon downloading the data, we performed quality checks on the reads using FASTQC (v0.11.9, available at <https://www.bioinformatics.babraham.ac.uk/projects/fastqc>). Reads with low quality and adaptor sequences were removed using Trimmomatic with default settings (version 0.38). Subsequently, the reads were aligned to the hg38 reference genome using bowtie 2 (v2.4.5).

To calculate the histone read coverage within each CGI (CpG island), we utilized the BEDtools coverage function. Initially, CGIs with less than 4 read counts in the ChIP-seq data were excluded to avoid including randomly mapped regions. The read counts were then adjusted to counts per 10 million based on the total number of mapped reads per sample. Additionally, the counts were divided by the input read count to normalize the read counts. To prevent normalized counts from becoming infinite in regions where the input sample had zero reads, an offset of 0.5 was added to all windows before scaling and input normalization. Regions where the coverage was zero in all samples were removed from the analysis.

In order to statistically analyze differences in histone modification levels, we compared the normalized read depths across CGIs using a Wilcoxon rank sum test. This test allowed us to assess the significance of differences in histone modification levels between samples.

Chromatome analysis

We followed the protocol we have recently published⁴¹.

Transfection and co-immunoprecipitation with GFP trap beads

In a 10 cm dish with HCT116 cells at 60% confluency, 12 micrograms of GFP-tagged plasmid (GFP, hUHRF1, UBL, TTD, PHD, SRA, RING, Δ UBL, Δ TTD, Δ PHD, Δ SRA, Δ RING, hUHRF1-TTD-mut) and 12 micrograms of dsRed-tagged plasmid (DNMT3A, DNMT3B) were transfected using 60 μ L Lipofectamine 2000 (Thermo Fisher Scientific). After a 3-hour incubation with Lipofectamine, the medium was replaced with McCoy's 5A medium and incubated for 1 day. The transfected cells were then collected by trypsinization, washed twice with PBS, and subjected to co-immunoprecipitation.

Co-immunoprecipitation was carried out following the manufacturer's protocol for GFP-Trap Agarose (chromotek). The collected cells were suspended in 200 μ L lysis buffer (10 mM Tris/Cl pH 7.5, 150 mM NaCl, 0.5 mM EDTA, 0.5% NP-40, 2.5 mM MgCl₂, 1 mM PMSF,

Protease inhibitor cocktail (Roche)) and incubated on ice for 30 minutes. The lysed samples were centrifuged at 16,000 g for 10 minutes at 4°C. A portion of the supernatant was collected as input, and the remaining supernatant was combined with dilution buffer (10 mM Tris/Cl pH 7.5, 150 mM NaCl, 0.5 mM EDTA, 1 mM PMSF, Protease inhibitor cocktail (Roche)) to a final volume of 500 µL.

Subsequently, 30 µL of GFP-Trap Agarose, pre-equilibrated with dilution buffer, was added to each lysate sample. The samples were incubated overnight at 4°C with gentle rotation. The GFP-Trap Agarose was then washed 5 times with lysis buffer and boiled for 10 minutes with SDS-PAGE sample buffer to elute the bound proteins for further analysis.

RNA extraction and quantitative reverse transcription PCR (RT-qPCR)

Total RNA was extracted from cells with RNeasy Plus Mini kit (Qiagen) according to the manufacturer's instructions and quantified using Qubit RNA BR Assay kit on Qubit 2.0 Fluorometer (Thermo Fisher Scientific). For RT-qPCR, total RNA was reverse transcribed using SuperScript IV Reverse Transcriptase (Thermo Fisher Scientific) and random primers (Promega). RT-qPCR was performed using Power SYBR Green (Applied Biosystems) following to manufacture protocol with TET2 and internal control (TBP1 and PGK1) primers. RT-qPCR primer sequences are available in Supplementary File 1.

Data availability

The WGBS data has been submitted to GEO under reference GSE236026

The mass spectrometry proteomics data have been deposited to the ProteomeXchange Consortium via the PRIDE⁶⁹ partner repository with the dataset identifier PXD043254

References

1. Luo, C., Hajkova, P. & Ecker, J. R. Dynamic DNA methylation: In the right place at the right time. *Science* **361**, 1336–1340 (2018).
2. Greenberg, M. V. C. & Bourc'his, D. The diverse roles of DNA methylation in mammalian development and disease. *Nat. Rev. Mol. Cell Biol.* **20**, 590–607 (2019).
3. Yang, J., Bashkenova, N., Zang, R., Huang, X. & Wang, J. The roles of TET family proteins in development and stem cells. *Development* **147**, dev183129 (2020).
4. Gujar, H., Weisenberger, D. J. & Liang, G. The Roles of Human DNA Methyltransferases and Their Isoforms in Shaping the Epigenome. *Genes (Basel)* **10**, (2019).
5. Petryk, N., Bultmann, S., Bartke, T. & Defossez, P.-A. Staying true to yourself: mechanisms of DNA methylation maintenance in mammals. *Nucleic Acids Res* (2020) doi:10.1093/nar/gkaa1154.
6. Gowher, H. & Jeltsch, A. Mammalian DNA methyltransferases: new discoveries and open questions. *Biochem. Soc. Trans.* **46**, 1191–1202 (2018).
7. Kikuchi, A. *et al.* Structural basis for activation of DNMT1. *Nat Commun* **13**, 7130 (2022).
8. Sharif, J. *et al.* The SRA protein Np95 mediates epigenetic inheritance by recruiting Dnmt1 to methylated DNA. *Nature* **450**, 908–912 (2007).
9. Bostick, M. *et al.* UHRF1 plays a role in maintaining DNA methylation in mammalian cells. *Science* **317**, 1760–1764 (2007).
10. Mancini, M., Magnani, E., Macchi, F. & Bonapace, I. M. The multi-functionality of UHRF1: epigenome maintenance and preservation of genome integrity. *Nucleic Acids Research* **49**, 6053–6068 (2021).
11. Arita, K., Ariyoshi, M., Tochio, H., Nakamura, Y. & Shirakawa, M. Recognition of hemi-methylated DNA by the SRA protein UHRF1 by a base-flipping mechanism. *Nature* **455**, 818–821 (2008).
12. Arita, K. *et al.* Recognition of modification status on a histone H3 tail by linked histone reader modules of the epigenetic regulator UHRF1. *Proc. Natl. Acad. Sci. U.S.A.* **109**, 12950–12955 (2012).
13. Ferry, L. *et al.* Methylation of DNA Ligase 1 by G9a/GLP Recruits UHRF1 to Replicating DNA and Regulates DNA Methylation. *Mol. Cell* **67**, 550-565.e5 (2017).
14. Kori, S. *et al.* Structure of the UHRF1 Tandem Tudor Domain Bound to a Methylated Non-histone Protein, LIG1, Reveals Rules for Binding and Regulation. *Structure* (2018) doi:10.1016/j.str.2018.11.012.
15. DaRosa, P. A. *et al.* A Bifunctional Role for the UHRF1 UBL Domain in the Control of Hemi-methylated DNA-Dependent Histone Ubiquitylation. *Mol. Cell* **72**, 753-765.e6 (2018).
16. Foster, B. M. *et al.* Critical Role of the UBL Domain in Stimulating the E3 Ubiquitin Ligase Activity of UHRF1 toward Chromatin. *Mol. Cell* **72**, 739-752.e9 (2018).
17. Nishiyama, A. *et al.* Uhrf1-dependent H3K23 ubiquitylation couples maintenance DNA methylation and replication. *Nature* **502**, 249–253 (2013).
18. Ishiyama, S. *et al.* Structure of the Dnmt1 Reader Module Complexed with a Unique Two-Mono-Ubiquitin Mark on Histone H3 Reveals the Basis for DNA Methylation Maintenance. *Mol. Cell* **68**, 350-360.e7 (2017).
19. Nishiyama, A. *et al.* Two distinct modes of DNMT1 recruitment ensure stable maintenance DNA methylation. *Nat Commun* **11**, 1222 (2020).

20. Nishiyama, A. & Nakanishi, M. Navigating the DNA methylation landscape of cancer. *Trends Genet* **37**, 1012–1027 (2021).
21. Ming, X. *et al.* Kinetics and mechanisms of mitotic inheritance of DNA methylation and their roles in aging-associated methylome deterioration. *Cell Res.* (2020) doi:10.1038/s41422-020-0359-9.
22. Mudbhary, R. *et al.* UHRF1 overexpression drives DNA hypomethylation and hepatocellular carcinoma. *Cancer Cell* **25**, 196–209 (2014).
23. Kong, X. *et al.* Defining UHRF1 Domains that Support Maintenance of Human Colon Cancer DNA Methylation and Oncogenic Properties. *Cancer Cell* **35**, 633–648.e7 (2019).
24. Vaughan, R. M. *et al.* The histone and non-histone methyllysine reader activities of the UHRF1 tandem Tudor domain are dispensable for the propagation of aberrant DNA methylation patterning in cancer cells. *Epigenetics Chromatin* **13**, 44 (2020).
25. Cai, Y. *et al.* Critical threshold levels of DNA methyltransferase 1 are required to maintain DNA methylation across the genome in human cancer cells. *Genome Res.* **27**, 533–544 (2017).
26. Kanemaki, M. T. Ligand-induced degrons for studying nuclear functions. *Curr Opin Cell Biol* **74**, 29–36 (2022).
27. Barretina, J. *et al.* The Cancer Cell Line Encyclopedia enables predictive modelling of anticancer drug sensitivity. *Nature* **483**, 603–607 (2012).
28. Natsume, T., Kiyomitsu, T., Saga, Y. & Kanemaki, M. T. Rapid Protein Depletion in Human Cells by Auxin-Inducible Degron Tagging with Short Homology Donors. *Cell Rep* **15**, 210–218 (2016).
29. Yesbolatova, A., Natsume, T., Hayashi, K.-I. & Kanemaki, M. T. Generation of conditional auxin-inducible degron (AID) cells and tight control of degron-fused proteins using the degradation inhibitor auxinole. *Methods* **164–165**, 73–80 (2019).
30. Yesbolatova, A. *et al.* The auxin-inducible degron 2 technology provides sharp degradation control in yeast, mammalian cells, and mice. *Nat Commun* **11**, 5701 (2020).
31. Scelfo, A. *et al.* Tunable DNMT1 degradation reveals cooperation of DNMT1 and DNMT3B in regulating DNA methylation dynamics and genome organization. 2023.05.04.539406 Preprint at <https://doi.org/10.1101/2023.05.04.539406> (2023).
32. Chen, T. *et al.* Complete inactivation of DNMT1 leads to mitotic catastrophe in human cancer cells. *Nat Genet* **39**, 391–396 (2007).
33. Baubec, T. *et al.* Genomic profiling of DNA methyltransferases reveals a role for DNMT3B in genic methylation. *Nature* **520**, 243–247 (2015).
34. Masalmeh, R. H. A. *et al.* De novo DNA methyltransferase activity in colorectal cancer is directed towards H3K36me3 marked CpG islands. *Nat Commun* **12**, 694 (2021).
35. Janssen, S. M. & Lorincz, M. C. Interplay between chromatin marks in development and disease. *Nat Rev Genet* **23**, 137–153 (2022).
36. Emperle, M. *et al.* Mutations of R882 change flanking sequence preferences of the DNA methyltransferase DNMT3A and cellular methylation patterns. *Nucleic Acids Res* **47**, 11355–11367 (2019).
37. Adam, S. *et al.* DNA sequence-dependent activity and base flipping mechanisms of DNMT1 regulate genome-wide DNA methylation. *Nat Commun* **11**, 3723 (2020).
38. Gao, L. *et al.* Comprehensive structure-function characterization of DNMT3B and DNMT3A reveals distinctive de novo DNA methylation mechanisms. *Nat Commun* **11**, 3355 (2020).

39. Dukatz, M. *et al.* Complex DNA sequence readout mechanisms of the DNMT3B DNA methyltransferase. *Nucleic Acids Res* **48**, 11495–11509 (2020).
40. Dukatz, M. *et al.* DNA methyltransferase DNMT3A forms interaction networks with the CpG site and flanking sequence elements for efficient methylation. *J Biol Chem* **298**, 102462 (2022).
41. Ugur, E. *et al.* Comprehensive chromatin proteomics resolves functional phases of pluripotency and identifies changes in regulatory components. *Nucleic Acids Res* gkad058 (2023) doi:10.1093/nar/gkad058.
42. Adam, S. *et al.* Flanking sequences influence the activity of TET1 and TET2 methylcytosine dioxygenases and affect genomic 5hmC patterns. *Commun Biol* **5**, 92 (2022).
43. Ding, G. *et al.* Regulation of Ubiquitin-like with Plant Homeodomain and RING Finger Domain 1 (UHRF1) Protein Stability by Heat Shock Protein 90 Chaperone Machinery*. *Journal of Biological Chemistry* **291**, 20125–20135 (2016).
44. Lam, A. J. *et al.* Improving FRET dynamic range with bright green and red fluorescent proteins. *Nat Methods* **9**, 1005–1012 (2012).
45. de Almeida, M. *et al.* AKIRIN2 controls the nuclear import of proteasomes in vertebrates. *Nature* **599**, 491–496 (2021).
46. Schraivogel, D. *et al.* High-speed fluorescence image-enabled cell sorting. *Science* **375**, 315–320 (2022).
47. Ginno, P. A. *et al.* A genome-scale map of DNA methylation turnover identifies site-specific dependencies of DNMT and TET activity. *Nature Communications* **11**, 2680 (2020).
48. Ngan, K. C.-H. *et al.* Activity-based CRISPR scanning uncovers allostery in DNA methylation maintenance machinery. *Elife* **12**, e80640 (2023).
49. Tian, Y. *et al.* UHRF1 contributes to DNA damage repair as a lesion recognition factor and nuclease scaffold. *Cell Rep* **10**, 1957–1966 (2015).
50. Meilinger, D. *et al.* Np95 interacts with de novo DNA methyltransferases, Dnmt3a and Dnmt3b, and mediates epigenetic silencing of the viral CMV promoter in embryonic stem cells. *EMBO Rep* **10**, 1259–1264 (2009).
51. Zhang, J. *et al.* S phase-dependent interaction with DNMT1 dictates the role of UHRF1 but not UHRF2 in DNA methylation maintenance. *Cell Res.* **21**, 1723–1739 (2011).
52. Maenohara, S. *et al.* Role of UHRF1 in de novo DNA methylation in oocytes and maintenance methylation in preimplantation embryos. *PLoS Genet.* **13**, e1007042 (2017).
53. Chang, Y. *et al.* MPP8 mediates the interactions between DNA methyltransferase Dnmt3a and H3K9 methyltransferase GLP/G9a. *Nat Commun* **2**, 533 (2011).
54. Sharma, S., Carvalho, D. D. D., Jeong, S., Jones, P. A. & Liang, G. Nucleosomes Containing Methylated DNA Stabilize DNA Methyltransferases 3A/3B and Ensure Faithful Epigenetic Inheritance. *PLOS Genetics* **7**, e1001286 (2011).
55. Arroyo, M. *et al.* Isoform-specific and ubiquitination dependent recruitment of Tet1 to replicating heterochromatin modulates methylcytosine oxidation. *Nat Commun* **13**, 5173 (2022).
56. Sharif, J. *et al.* Activation of Endogenous Retroviruses in Dnmt1(-/-) ESCs Involves Disruption of SETDB1-Mediated Repression by NP95 Binding to Hemimethylated DNA. *Cell Stem Cell* **19**, 81–94 (2016).

57. Dawson, M. A. The cancer epigenome: Concepts, challenges, and therapeutic opportunities. *Science* **355**, 1147–1152 (2017).
58. Zeidan, A. M., Kharfan-Dabaja, M. A. & Komrokji, R. S. Beyond hypomethylating agents failure in patients with myelodysplastic syndromes. *Curr Opin Hematol* **21**, 123–130 (2014).
59. Pappalardi, M. B. *et al.* Discovery of a first-in-class reversible DNMT1-selective inhibitor with improved tolerability and efficacy in acute myeloid leukemia. *Nat Cancer* **2**, 1002–1017 (2021).
60. Chen, Q. *et al.* GSK-3484862 targets DNMT1 for degradation in cells. *NAR Cancer* **5**, zcad022 (2023).
61. Senisterra, G. *et al.* Discovery of Small-Molecule Antagonists of the H3K9me3 Binding to UHRF1 Tandem Tudor Domain. *SLAS Discov* **23**, 930–940 (2018).
62. Chang, L. *et al.* Discovery of small molecules targeting the tandem tudor domain of the epigenetic factor UHRF1 using fragment-based ligand discovery. *Sci Rep* **11**, 1121 (2021).
63. Kori, S. *et al.* Structure-based screening combined with computational and biochemical analyses identified the inhibitor targeting the binding of DNA Ligase 1 to UHRF1. *Bioorg Med Chem* **52**, 116500 (2021).
64. Liu, W. H. *et al.* Discovery and Mechanism of Small Molecule Inhibitors Selective for the Chromatin-Binding Domains of Oncogenic UHRF1. *Biochemistry* **61**, 354–366 (2022).
65. Ran, F. A. *et al.* Genome engineering using the CRISPR-Cas9 system. *Nat Protoc* **8**, 2281–2308 (2013).
66. Miura, F., Enomoto, Y., Dairiki, R. & Ito, T. Amplification-free whole-genome bisulfite sequencing by post-bisulfite adaptor tagging. *Nucleic Acids Res* **40**, e136 (2012).
67. Miura, F. *et al.* Highly efficient single-stranded DNA ligation technique improves low-input whole-genome bisulfite sequencing by post-bisulfite adaptor tagging. *Nucleic Acids Res* **47**, e85 (2019).
68. Adam, S., Klingel, V., Radde, N. E., Bashtrykov, P. & Jeltsch, A. On the accuracy of the epigenetic copy machine: comprehensive specificity analysis of the DNMT1 DNA methyltransferase. *Nucleic Acids Res* gkad465 (2023) doi:10.1093/nar/gkad465.
69. Deutsch, E. W. *et al.* The ProteomeXchange consortium at 10 years: 2023 update. *Nucleic Acids Res* **51**, D1539–D1548 (2023).

Acknowledgments

Work in the lab of Pierre-Antoine Defossez is supported by the Fondation ARC (PGA1 RF20180206807), Agence Nationale de la Recherche (ANR-15-CE12-0012-01), Institut National du Cancer (INCa PLBio 2015-1-PLBio-01-DR A-1), and Fondation pour la Recherche Médicale. This study was also supported by the LabEx "Who Am I?" #ANR-11-LABX-0071 and the Université de Paris IdEx #ANR-18-IDEX-0001 funded by the French Government through its "Investments for the Future" program. KY was supported by ARC foundation CDD Postdoctorant en France (Ref. No. PDF20181208337), Labex "Who Am I?" postdoctoral support, and a JSPS Postdoctoral Fellowship for Research Abroad (Ref. No. 202260432). The work of FM and TI was supported by Platform Project for Supporting Drug Discovery and Life Science Research (Basis for Supporting Innovative Drug Discovery and Life Science Research (BINDS)) from AMED under Grant Number JP20am0101103 (support number 2652). AJ was supported by Deutsche Forschungsgemeinschaft (DFG) JE252/48. DF has received support for this project by ARC labellisation program 2019. The authors greatly acknowledge the Cell and Tissue Imaging (PICT-IBiSA), Institut Curie, member of the French National Research Infrastructure France-BioImaging (ANR10-INBS-04).

We are very grateful to Allison Bardin and Raphael Margueron for useful advice. We thank the following colleagues for the gift of useful reagents: Alexis Gautreau, Olivier Bernard, Michaela Fontenay.

Author Contributions

KY, XC, BR and PAD designed and performed experiments,
KY, XC, BR, AS and ML established cell lines and rescue constructs for this study.
KY, XC, BR, LF, and ML performed biological experiments (WB, PCR, and cell culture).
KY, BR, LF, FB performed DNA methylation analysis (LUMA and LC-MS).
CSL performed microscopy analysis.
FM prepared WGBS libraries, then sequenced them with NGS.
PB and AJ conducted the analyses shown in Fig. 4C and 6A.
KY, PB, FM, OK performed bioinformatic analyses.
EU performed proteome analysis.
KY, PBA, HL, MTK, DF, AJ, TI, and PAD acquired funding.
KY and PAD supervised the project.
KY wrote the original draft of the manuscript. AJ, DF, BR and PAD reviewed and edited the draft.

Competing Interests Statement

The authors declare no competing financial interests.

Materials and correspondence

Requests should be addressed to
yamako0801@icloud.com
and
pierre-antoine.defossez@cnsr.fr

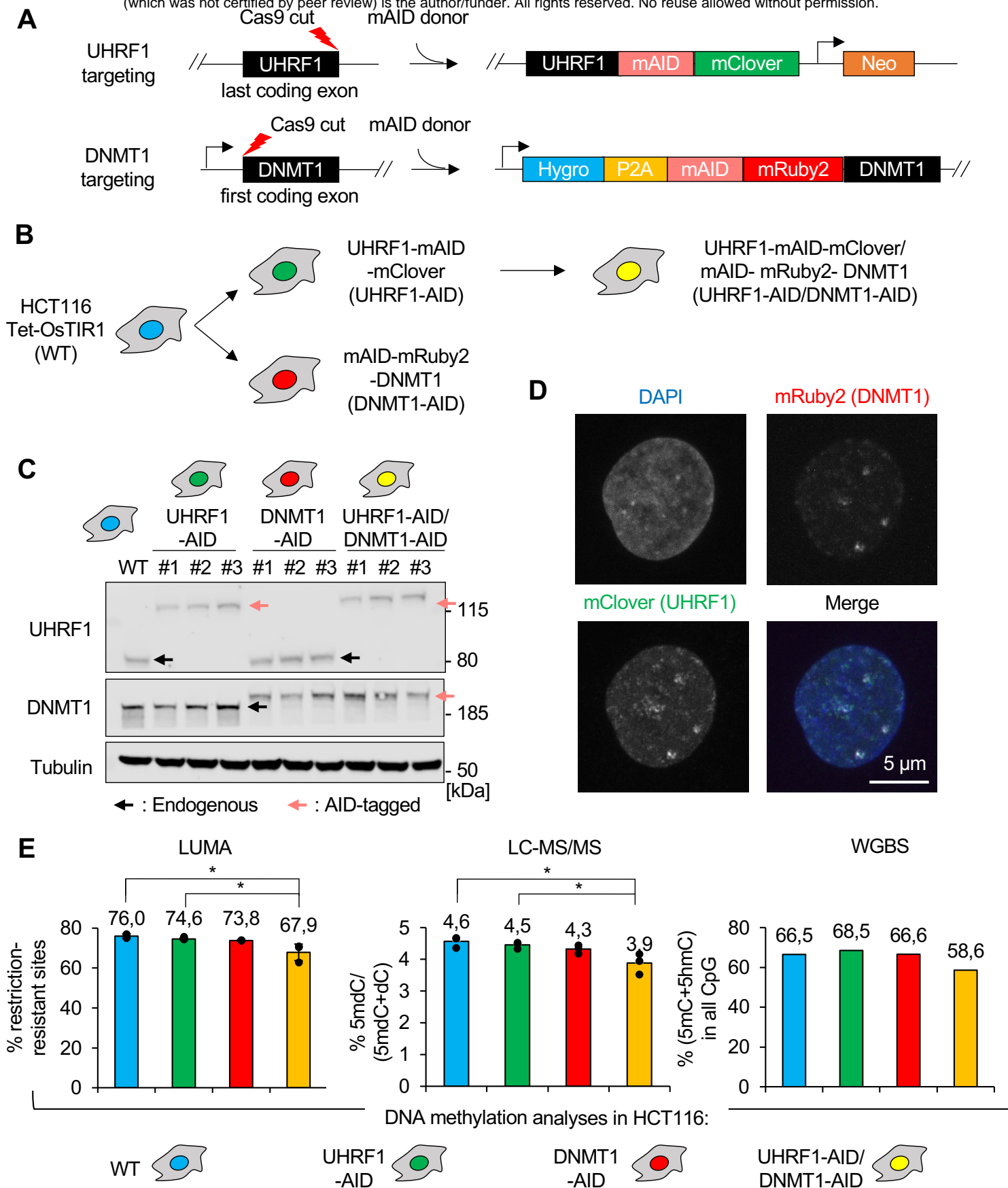


Figure 1. Establishment and validation of endogenous AID-tagged UHRF1 and/or DNMT1 HCT116 cells.

(A) Schematic of the CRISPR/Cas9 genome editing strategy to endogenously tag UHRF1 with mAID/mClover and DNMT1 with mAID/mRuby2. (B) Order of events for the generation of the different cell lines. (C) Immunoblot images for validation of endogenous AID-tagged UHRF1 and/or DNMT1 HCT116 cells. (D) Representative fluorescence images on UHRF1-AID/DNMT1-AID HCT116 cells showing that tagged UHRF1 and DNMT1 co-localize. (E) Quantification of the DNA methylation level in each HCT116 cell line with LUMA, LC-MS/MS, or WGBS. Tukey HSD test: * $p < 0.05$.

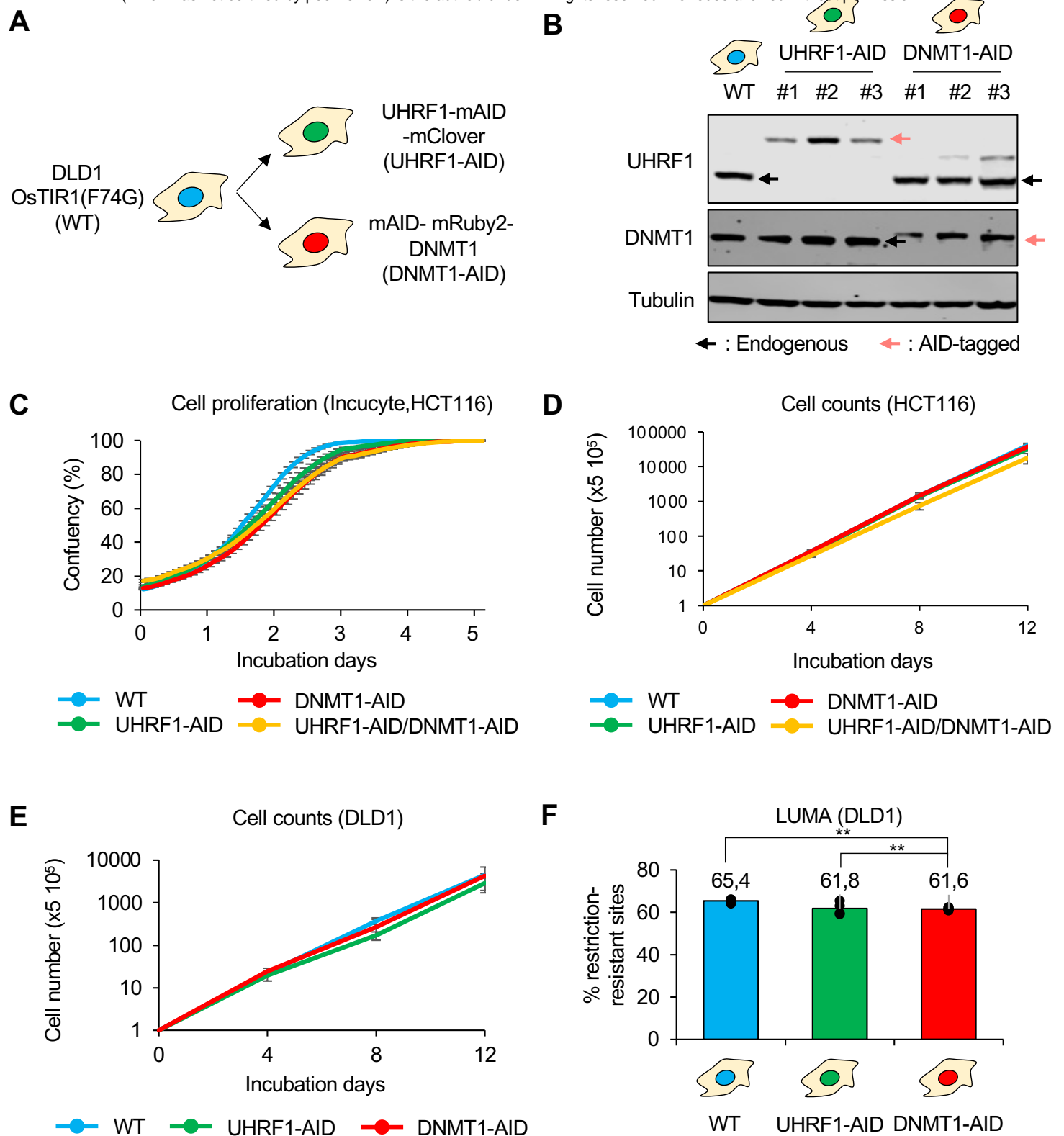


Figure S1. Establishment and validation of endogenous AID-tagged UHRF1 and DNMT1 DLD1 cells and further validations.

(A) Procedure followed to establish the UHRF1-AID and DNMT1-AID cells in the DLD1 background. (B) Immunoblot for validation of endogenous AID-tagged UHRF1 or DNMT1 DLD1 cells. (C) Cell proliferation data on HCT116 derivatives without auxin (Incucyte videomicroscopy). (D) Cell proliferation data on HCT116 derivatives without auxin (Cell counting). (E) Cell proliferation data on DLD1 derivatives without auxin (Cell counting). (F) Quantification of the DNA methylation level in DLD1 derivatives, without auxin (LUMA). Tukey HSD test: **p < 0.01.

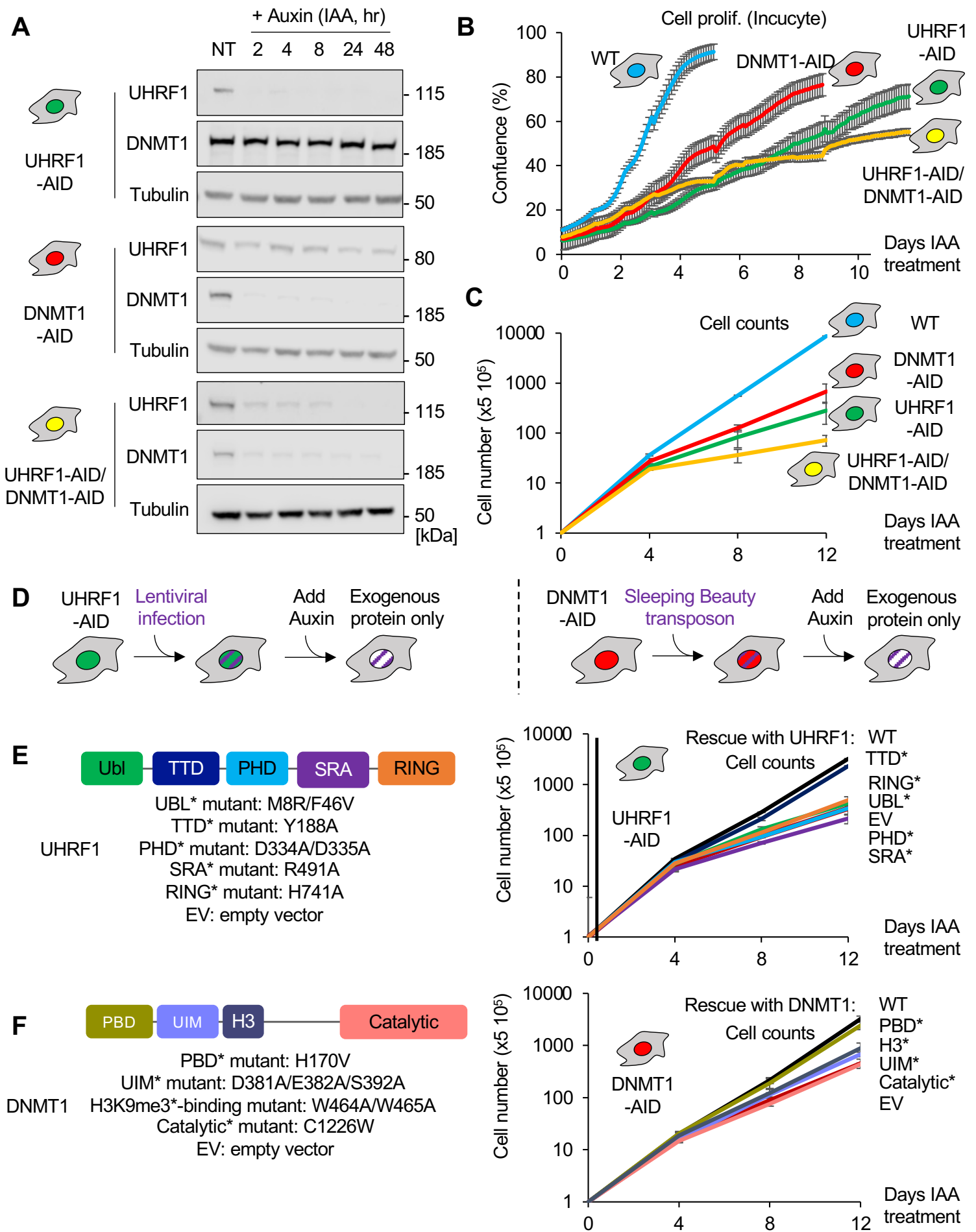


Figure 2. The depletion of UHRF1 and DNMT1 is efficient, negatively affects growth, and can be rescued genetically. (A) Immunoblot of HCT116 cells following treatment with Auxin (IAA) at the indicated time points (hours) and before treatment (NT). (B) Cell proliferation of the HCT116 derivatives in the continuous presence of auxin for the indicated durations (Incucyte videomicroscopy). Error bars represent the SEM of biological triplicates. (C) Cell proliferation of the HCT116 derivatives in the continuous presence of auxin for the indicated durations (cell counting). The error bars represent the SEM of biological triplicates. (D) Schematic of the rescue experiments. (E) UHRF1 domain map showing the mutants studied (left panel) and corresponding cell proliferation analysis (Cell count, right panel). Error bars represent the SEM of biological triplicates. (F) Same as panel E, but for DNMT1.

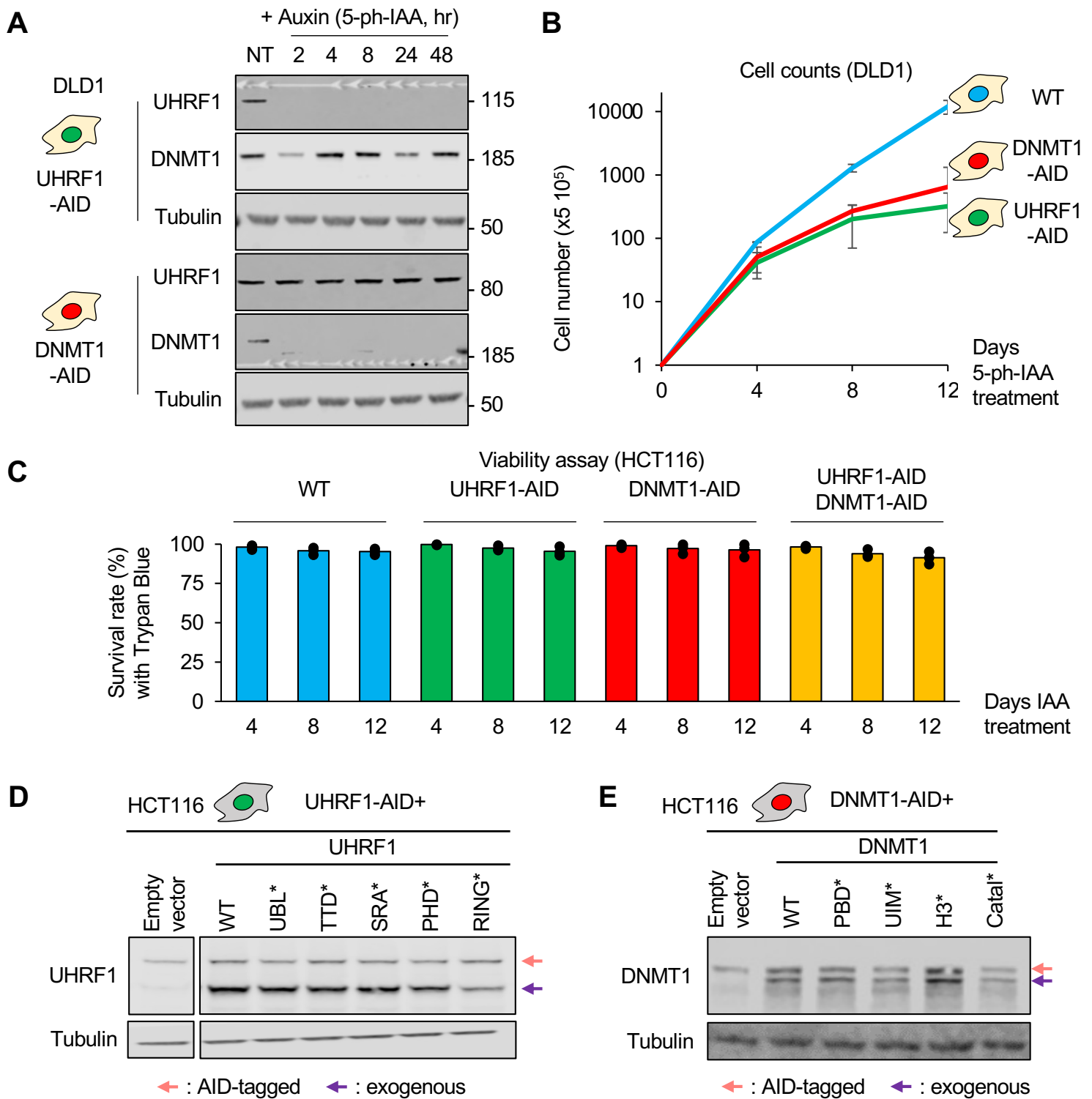


Figure S2. Growth of DLD1 derivatives after UHRF1 or DNMT1 degradation; additional controls on the HCT116 derivatives and the rescue experiment.

(A) Immunoblot of DLD1 cells following treatment with Auxin (5-ph-IAA) at the indicated time points (hours) and before treatment (NT). (B) Cell proliferation of DLD1 derivatives after auxin addition (Cell counting). Error bars represent the SEM of biological triplicates. (C) Cell viability of HCT116 derivatives following UHRF1 or DNMT1 degradation (trypan blue staining). Error bars represent the SEM of biological triplicates. (D) Immunoblot images for validation of exogenous UHRF1 rescue constructs. The pink arrow indicates endogenous UHRF1 tagged with AID and mClover. The purple arrow indicates exogenous UHRF1 tagged with V5. (E) Immunoblot images for validation of exogenous DNMT1 rescue constructs. Legend as in panel D.

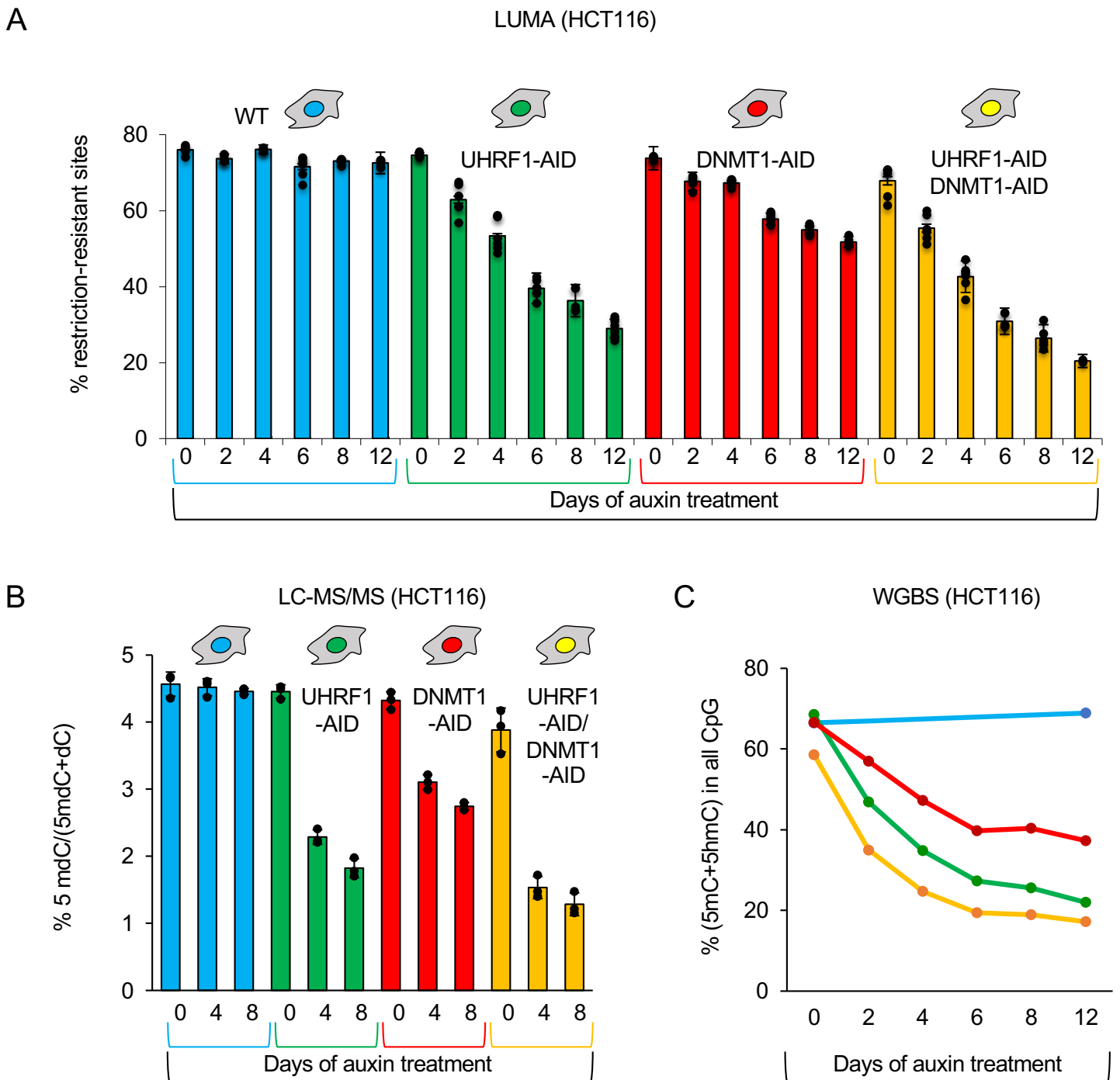


Figure 3. UHRF1-depleted cells show more severe DNA hypomethylation than DNMT1-depleted cells. (A) Global DNA methylation analysis in the indicated HCT116 derivatives after auxin treatment for the indicated duration (LUMA). Error bars represent the SEM of biological triplicates. (B) As in panel A, but the quantitation of 5-mC was done by LC-MS/MS. (C) As in panel A, but the quantitation of DNA methylation was done by WGBS.

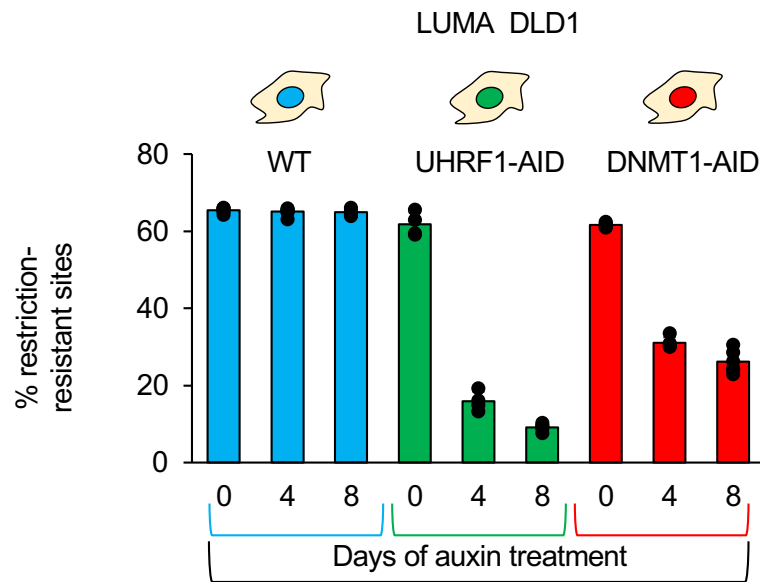
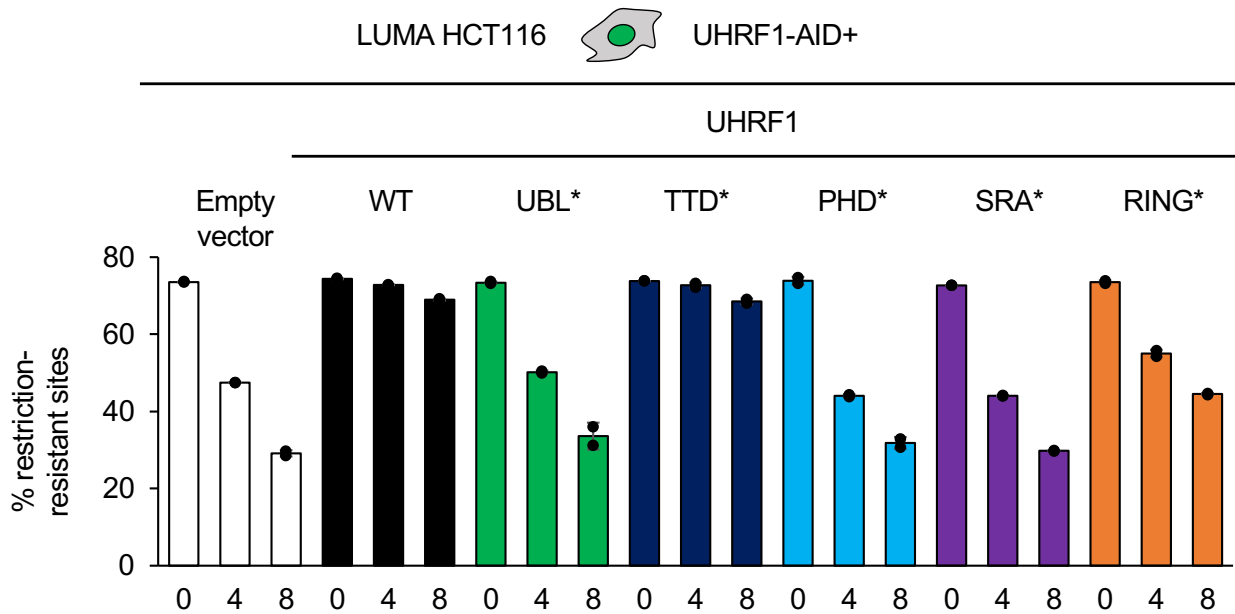
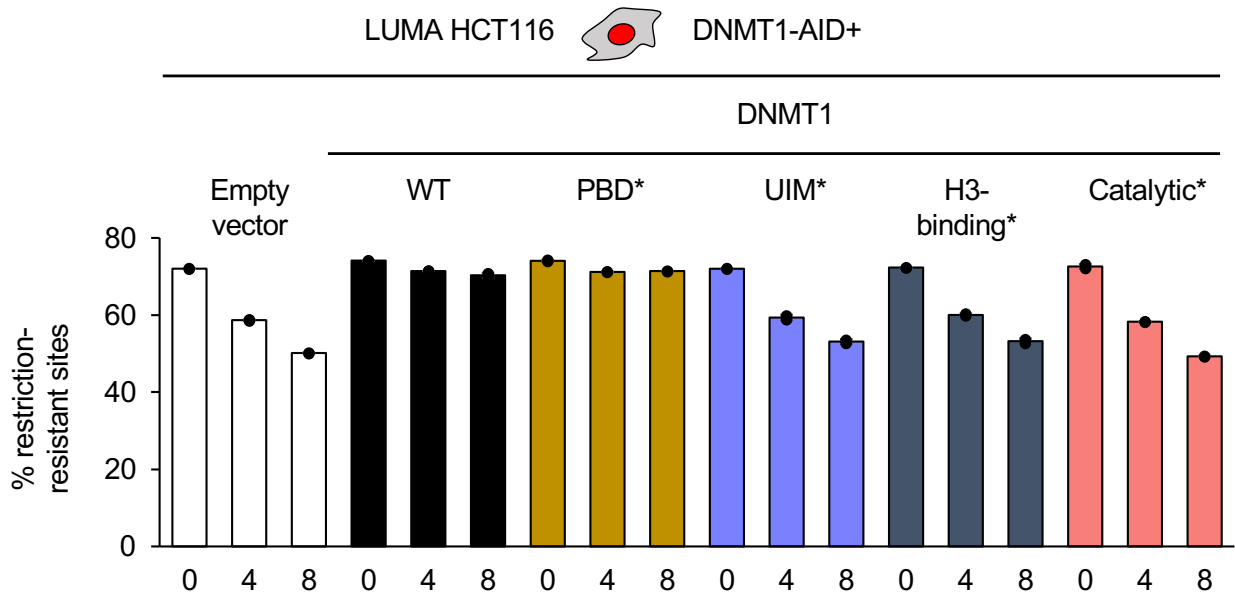
A**B****C**

Figure S3. Validation of the effects of UHRF1 and DNMT1 degradation on DNA methylation in DLD1 cells; identification of the domains essential for DNA methylation.

(A) Global DNA methylation analysis in the indicated DLD1 derivatives after auxin treatment for the indicated duration (LUMA). Error bars represent the SEM of biological triplicates.

(B) Global DNA methylation analysis in the indicated HCT116 UHRF1-AID rescue lines. Error bars represent the SEM of 3 independent experiments. (C) As in panel B, but for DNMT1-AID.

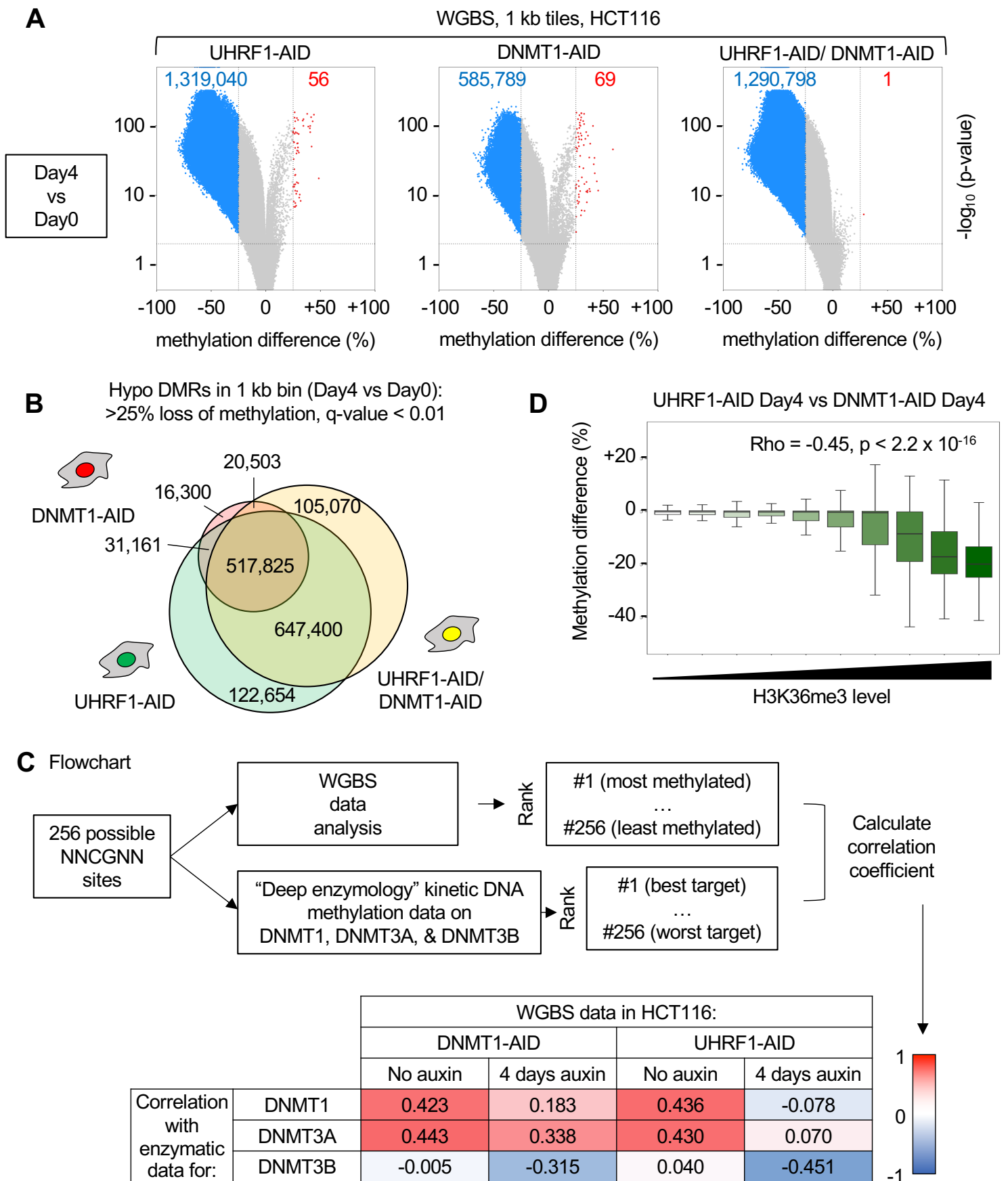


Figure 4. Greater loss of DNA methylation upon UHRF1 depletion than upon DNMT1 depletion; UHRF1 regulates DNA methylation at DNMT1, DNMT3A and DNMT3B sites.

(A) Volcano plot of differentially methylated regions (DMRs, 1kb bins) after 4 days of depletion of UHRF1 and/or DNMT1. Blue dots: hypomethylated regions (>25% loss of methylation, q-value < 0.01), red dots: hypermethylated regions (>25% gain of methylation, q-value < 0.01). Gray dots: no significant change. (B) Venn diagram of the hypomethylated regions in the indicated cell lines, 4 days after depletion of the proteins. (C) Workflow used to quantitatively compare WGBS methylation values to the in vitro preferences of DNMT1, DNMT3A and DNMT3B. (D) Higher levels of H3K36me3 correlate with larger losses of DNA methylation in CpG islands. The CGIs were ranked by H3K36me3 level in HCT116 cells and split into 10 equally sized bins. Lines = median; box = 25th–75th percentile; whiskers = 1.5 × interquartile range from box.

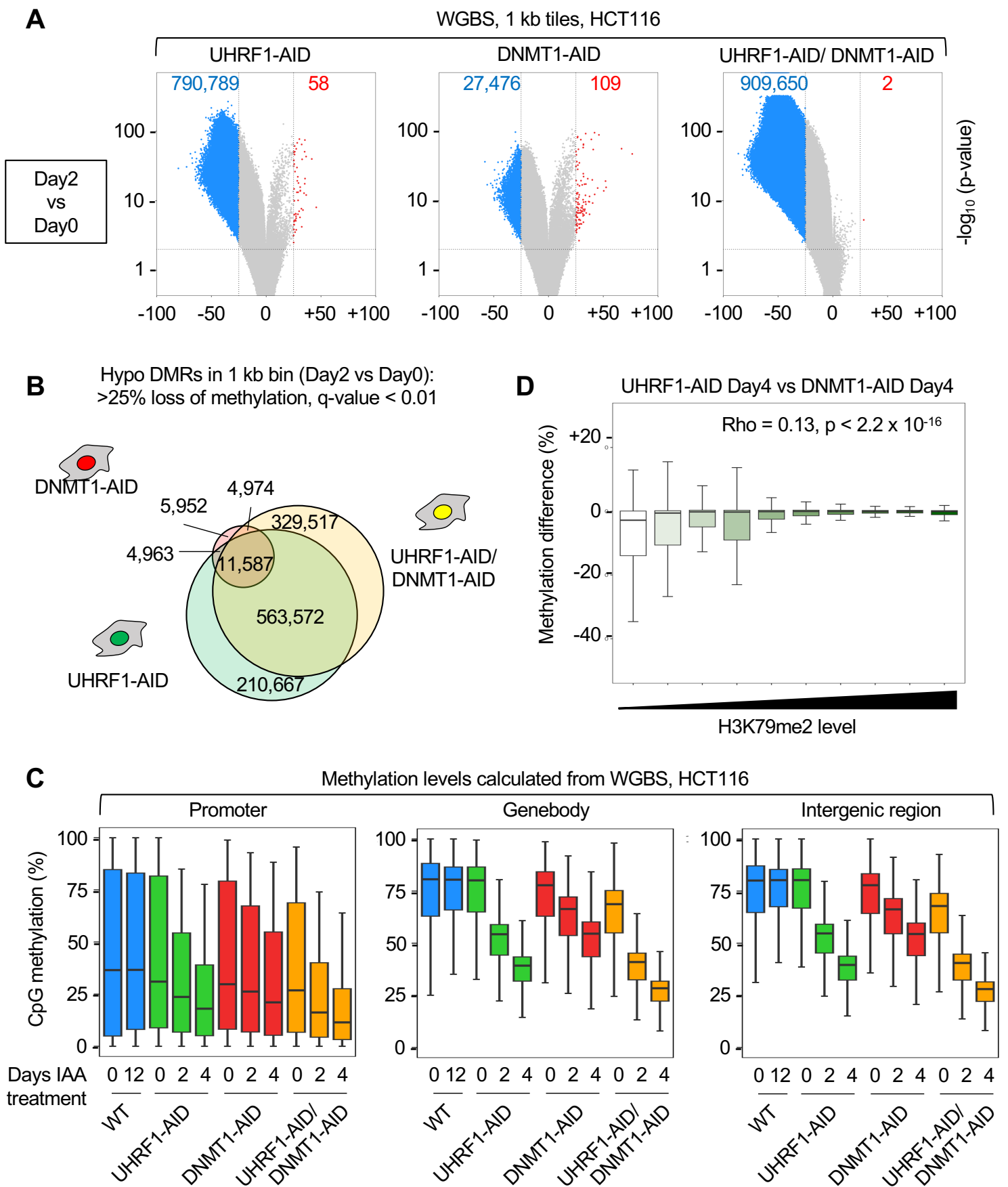


Figure S4. Greater loss of DNA methylation upon UHRF1 depletion than upon DNMT1 depletion; additional data.

(A) Volcano plot of differentially methylated regions (DMRs, 1kb bins) after 2 days of depletion of UHRF1 and/or DNMT1. Blue dots: hypomethylated regions (>25% loss of methylation, q-value < 0.01), red dots: hypermethylated regions (>25% gain of methylation, q-value < 0.01). Gray dots: no significant change. (B) Venn diagram of the hypomethylated regions in the indicated cell lines, 2 days after depletion of the proteins.

(C) Boxplots of CpG methylation (%) in the indicated regions and conditions. Promoters: from -200 to + 1000 bps from TSS; Gene bodies obtained from hg38 refFlat by removal of the promoter regions; Intergenic regions: the whole genome minus promoters and gene bodies.

(D) Lack of correlation between H3K79me2 levels and DNA methylation loss at CpG islands; legend as in Panel 4D.

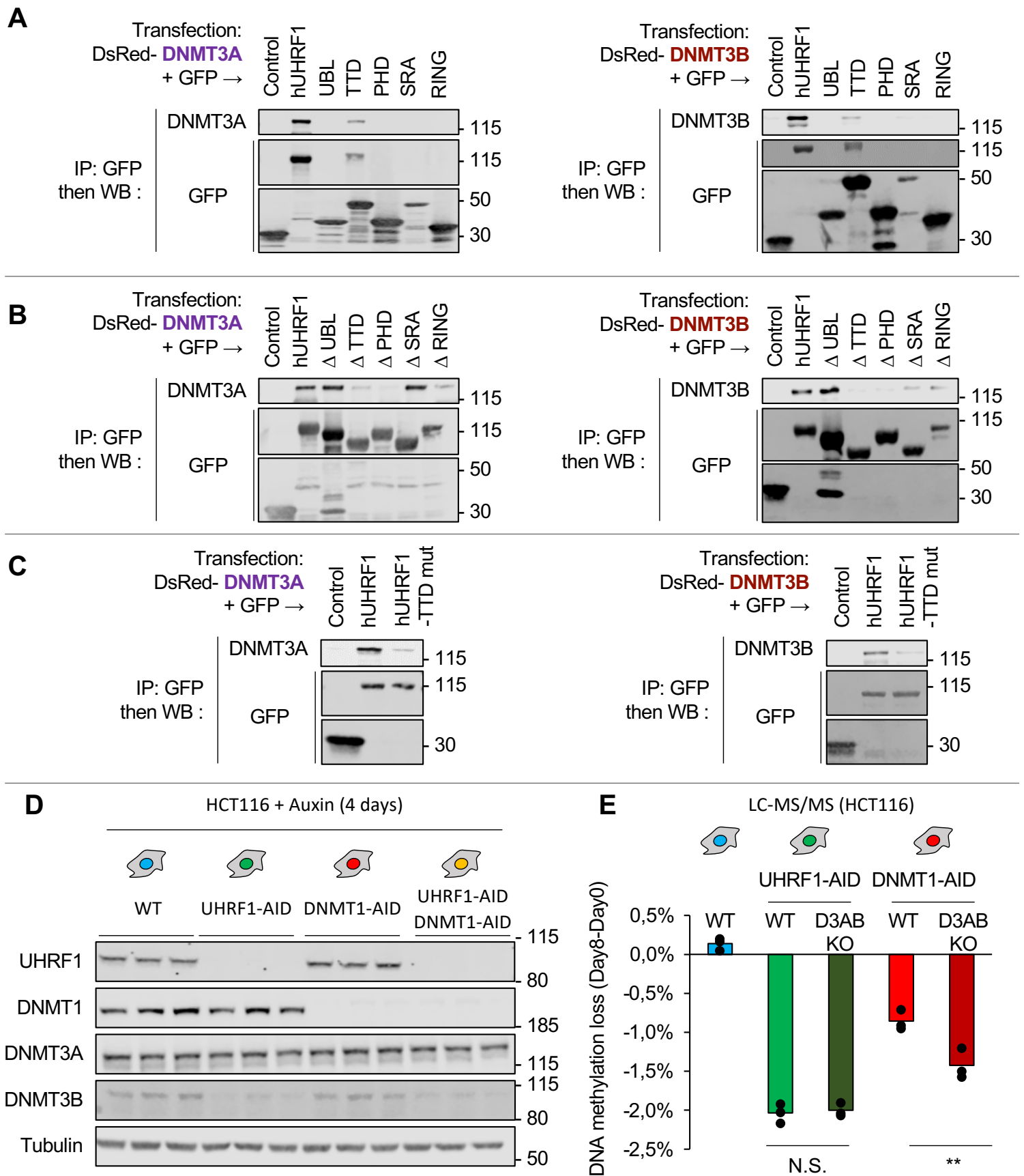


Figure 5. Physical and functional interaction between UHRF1, DNMT3A, and DNMT3B.

(A) Western blotting after the indicated co-immunoprecipitation experiments. hUHRF1: Full-length protein. The other names indicate isolated domains, as depicted in Figure 2E. (B) Same as in A, except we used truncated constructs in which the indicated domains were deleted from the full-length protein. (C) Same as in A, except we used a full-length UHRF1 protein with a point mutation in the Tandem Tudor Domain (Y188A). (D) Western blotting showing abundance of the indicated proteins in total cell extracts. (E) Quantitation of the loss of DNA methylation in the indicated cell lines after 8 days of protein depletion, by LC-MS/MS. Tukey HSD test: N.S. $p > 0.05$, ** $p < 0.01$.

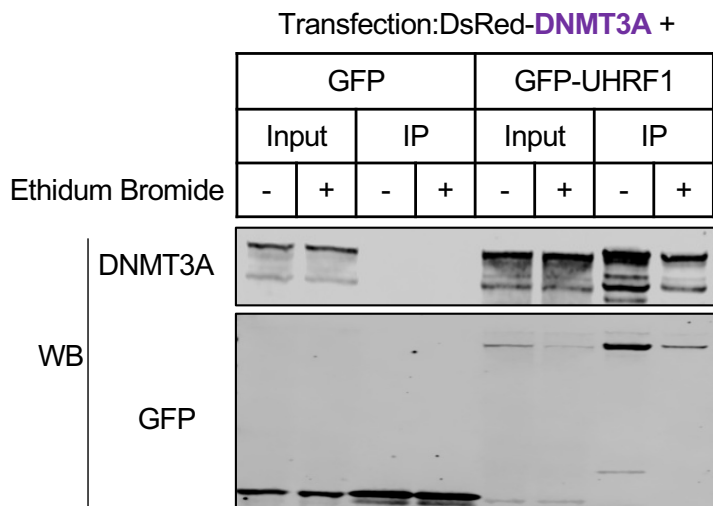
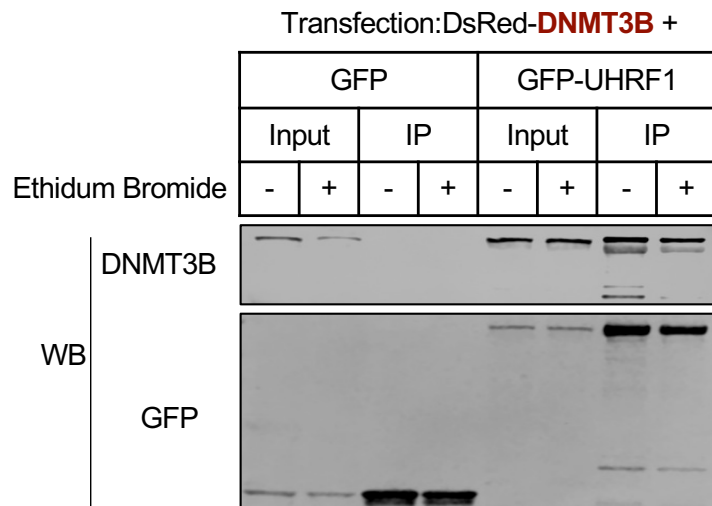
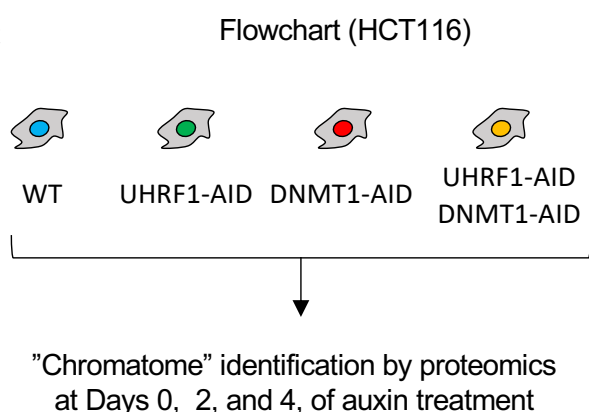
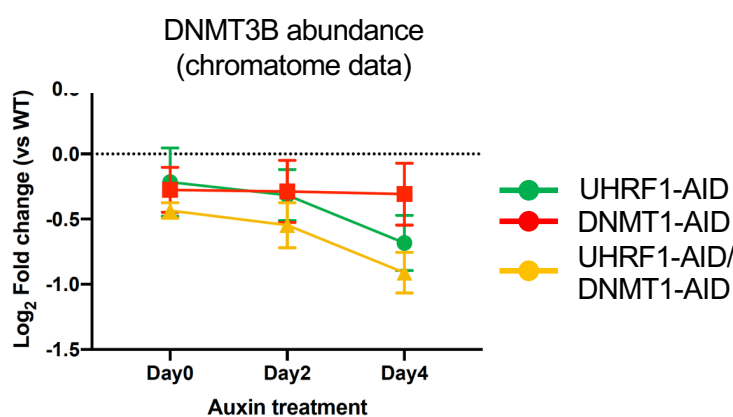
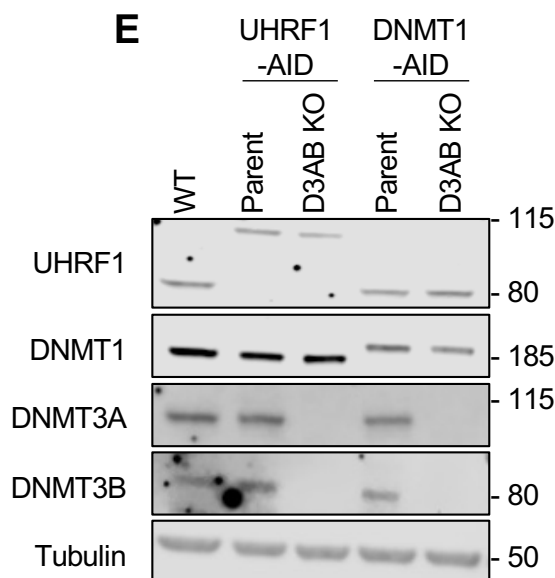
A**B****C****D****E**

Figure S5. Additional controls for the UHRF1/DNMT3A/DNMT3B interaction; chromatome experiments reveal the effect of UHRF1 depletion on DNMT3B abundance; validation of the DNMT3A/DNMT3B KOs
 (A-B) Western blotting after the indicated co-immunoprecipitation experiments, without or with Ethidium Bromide (20 ug/mL). (C) Flowchart of the chromatome experiments. (D) Illustration of the chromatome results for DNMT3B, which is less abundant upon UHRF1 depletion. (E) Validation by western blotting of the DNMT3A and DNMT3B CRISPR KOs in UHRF1-AID or DNMT1-AID HCT116 cells.

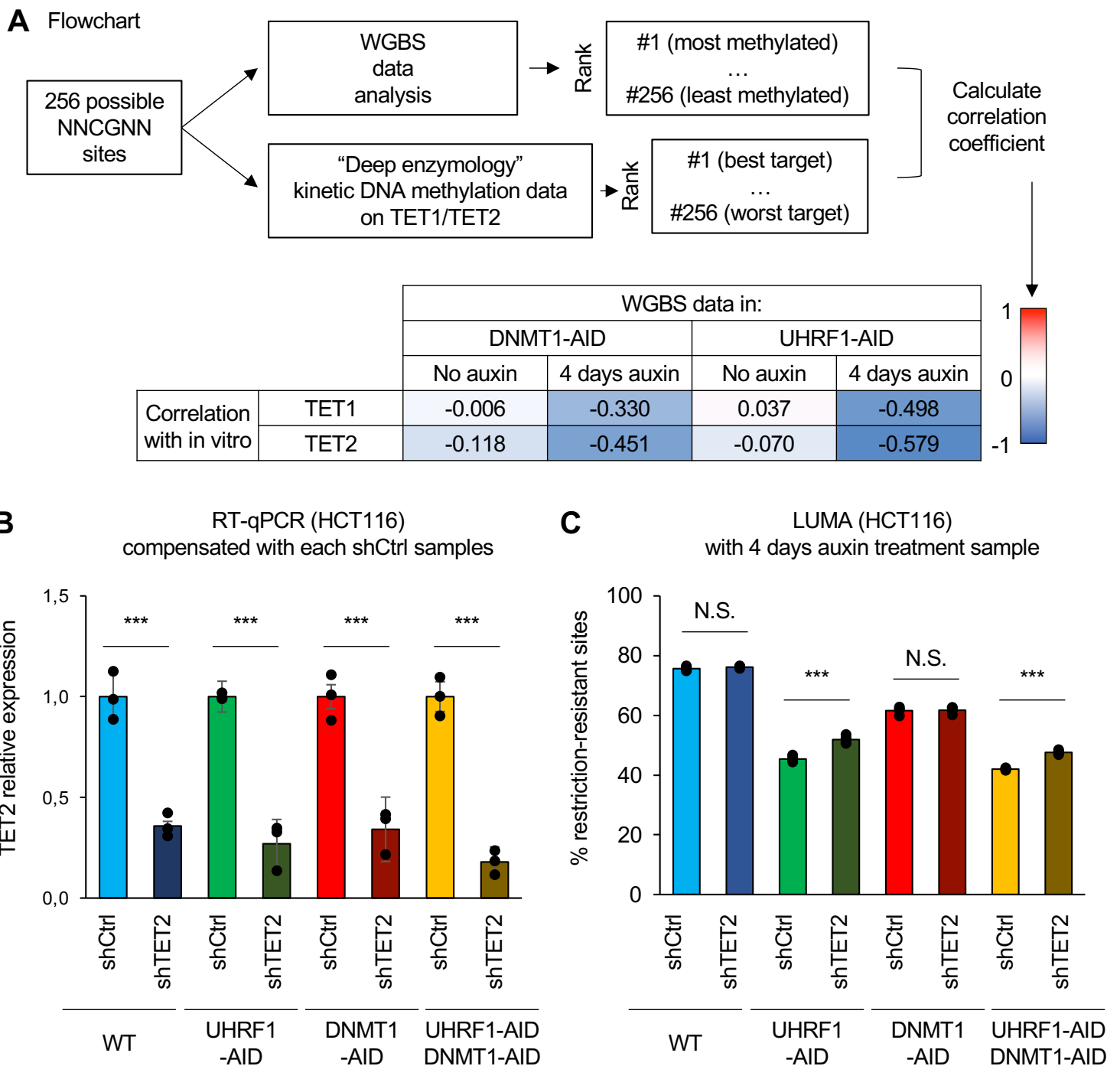


Figure 6. UHRF1 protects against active demethylation by TET2.

(A) Workflow used to quantitatively compare WGBS methylation values to the in vitro preferences of TET1 and TET2. (B) RT-qPCR analysis for validation of TET2 knockdown for HCT116 UHRF1 and/or DNMT1-AID cell lines. (C) Global DNA methylation analysis (LUMA) for HCT116 UHRF1 and/or DNMT1-AID cell lines combined with TET2 knockdown. Error bars represent the SEM of 3 independent experiments. Student t-test: N.S. $p > 0.05$, *** $p < 0.001$.

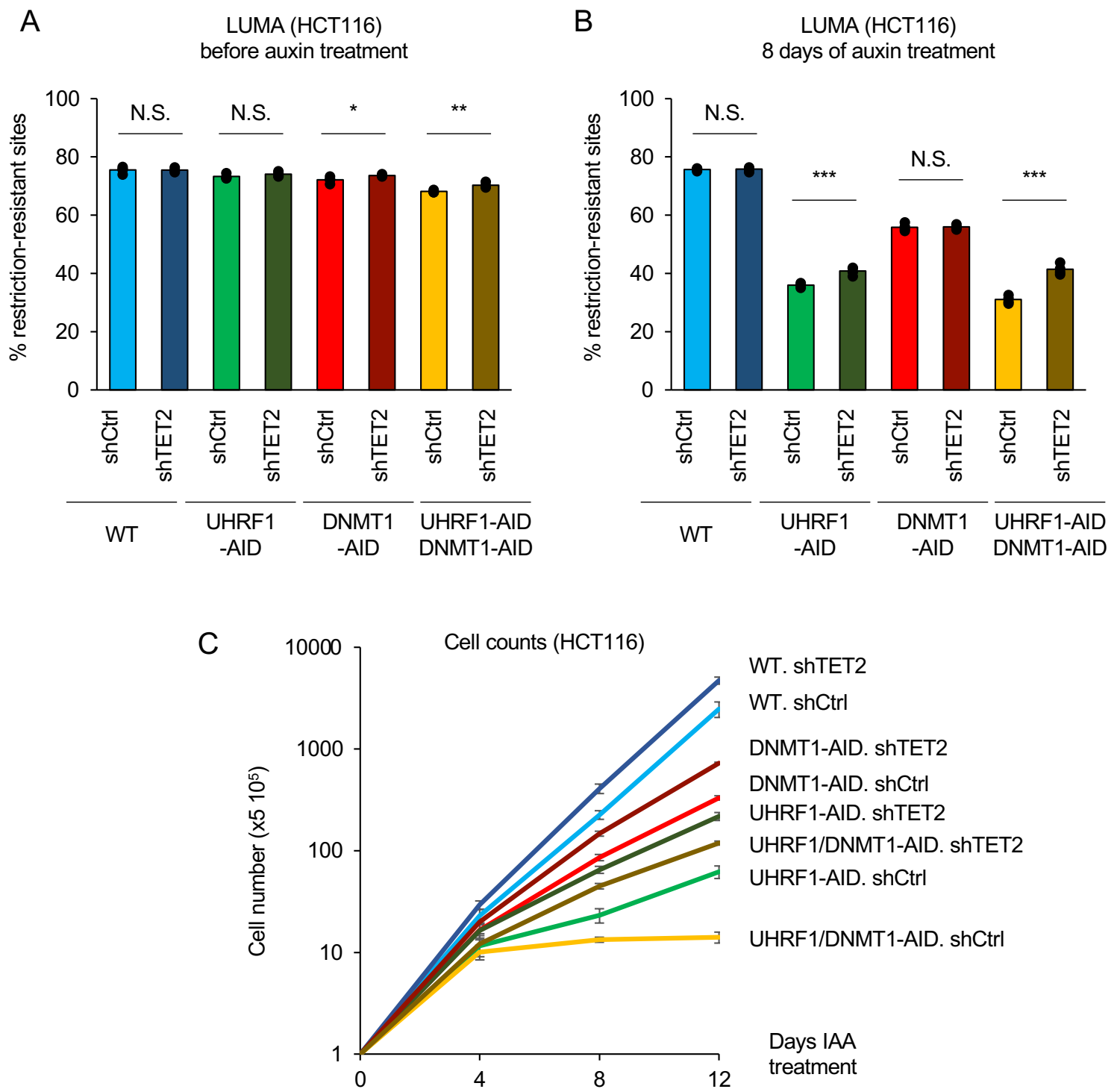
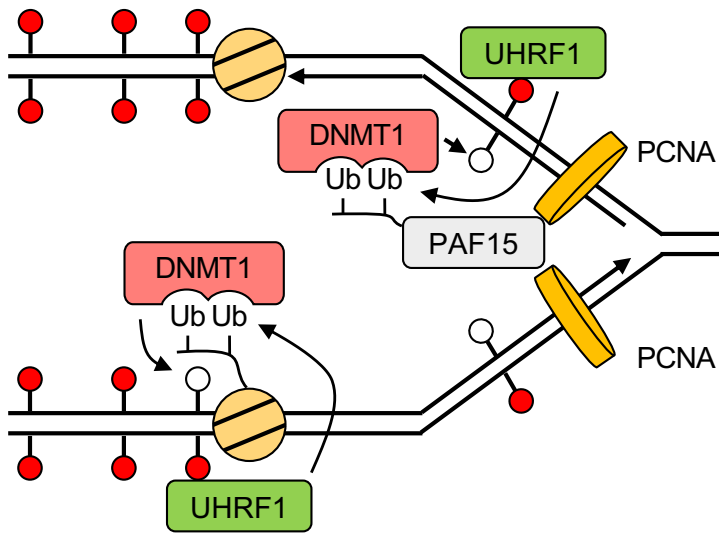


Figure S6. UHRF1 protects against active demethylation by TET2: additional data and controls.

(A) Global DNA methylation analysis (LUMA) for HCT116 UHRF1 and/or DNMT1-AID cell lines combined with TET2 knockdown, in the absence of auxin. Error bars represent the SEM of 3 independent experiments. Student t-test: N.S. $p > 0.05$, * $p < 0.05$, ** $p < 0.01$. (B) As in Panel A, but following 8 days of auxin treatment. (C) Growth curves of the indicated cell lines, in the presence of auxin (Cell counts).

UHRF1 canonical function:

DNA methylation maintenance by DNMT1 activation



UHRF1 non-canonical functions:

- De novo methylation through DNMT3A and DNMT3B
 - Inhibition of TET activity

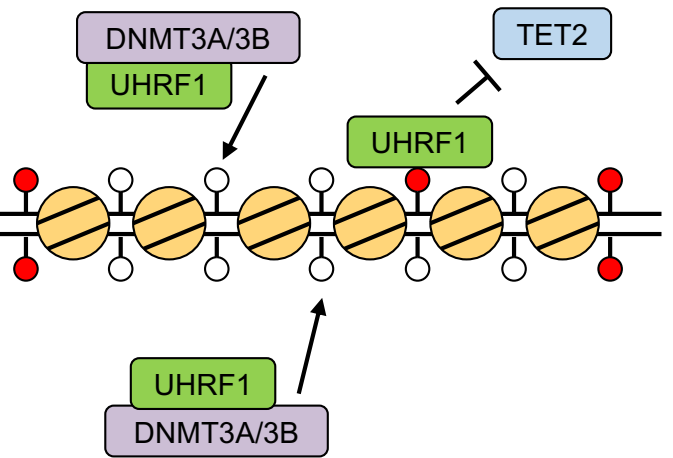


Figure 7. A revised and expanded model for UHRF1 functions in DNA methylation homeostasis.