



**HAL**  
open science

# Chemical and olfactory analysis of essential oils of *Hedychium gardnerianum*, *Hedychium flavescens*, *Pittosporum senacia* and *Psidium cattleianum* from Reunion Island

Marine Canton, Marina Thierry, Sylvain Antoniotti

► **To cite this version:**

Marine Canton, Marina Thierry, Sylvain Antoniotti. Chemical and olfactory analysis of essential oils of *Hedychium gardnerianum*, *Hedychium flavescens*, *Pittosporum senacia* and *Psidium cattleianum* from Reunion Island. *Journal of Essential Oil & Plant Composition*, 2023, 1 (3), pp.298-311. 10.58985/jeopc.2023.v01i03.39 . hal-04293587

**HAL Id: hal-04293587**

**<https://hal.science/hal-04293587>**

Submitted on 18 Nov 2023

**HAL** is a multi-disciplinary open access archive for the deposit and dissemination of scientific research documents, whether they are published or not. The documents may come from teaching and research institutions in France or abroad, or from public or private research centers.

L'archive ouverte pluridisciplinaire **HAL**, est destinée au dépôt et à la diffusion de documents scientifiques de niveau recherche, publiés ou non, émanant des établissements d'enseignement et de recherche français ou étrangers, des laboratoires publics ou privés.



Distributed under a Creative Commons Attribution 4.0 International License

1 **Chemical and olfactory analysis of essential oils of *Hedychium gardnerianum*,**  
2 ***Hedychium flavescens*, *Pittosporum senacia* and *Psidium cattleianum* from**  
3 **Reunion Island**

4 Marine Canton<sup>1</sup>, Marina Thierry<sup>1</sup> and Sylvain Antoniotti<sup>1,2,\*</sup>

5 <sup>1</sup> *Université Côte d'Azur*

6 *Institut d'Innovation et de Partenariats Arômes Parfums Cosmétiques*

7 *Espace J.-L. Lions, 4 traverse Dupont, 06130 Grasse, France*

8 <sup>2</sup> *Université Côte d'Azur, CNRS*

9 *Institut de Chimie de Nice*

10 *Parc Valrose, 06108 Nice cedex 2, France*

11 \*Correspondence: [sylvain.antoniotti@univ-cotedazur.fr](mailto:sylvain.antoniotti@univ-cotedazur.fr)

12

13 **ABSTRACT**

14 Four essential oils (EOs), rarely described in the literature, and never for  
15 samples originating from Reunion Island, were studied by gas  
16 chromatography with flame ionisation detector (GC-FID) and gas  
17 chromatography coupled with mass spectrometry and olfactometry  
18 (GC/MS-O). The chemical composition, as well as the main olfactory  
19 properties, of the following four EOs were determined: longose  
20 (*Hedychium gardnerianum*), yellow ginger (*Hedychium flavescens*), bois de  
21 joli coeur (*Pittosporum senacia*), and Chinese guava (*Psidium cattleianum*).  
22 The chemical compositions were found to be rich in mono- and  
23 sesquiterpene hydrocarbons. The main components of *H. gardnerianum*  
24 flowers EO was  $\beta$ -farnesene (12.1%),  $\alpha$ -cadinol (9.7%) and  $\alpha$ -farnesene  
25 (7.1%). The composition of essential oil from *Hedychium flavescens* leaves is  
26 reported for the first time with  $\beta$ - and  $\alpha$ -pinene (47.8 and 18.7%,  
27 respectively) as well as  $\beta$ -caryophyllene (17.5%) as the main compounds.  
28 The main components of *P. senacia* leaves EO and *P. cattleianum* floral tops  
29 EO was identified as nonane (36.2%) and  $\beta$ -caryophyllene (43.7%),  
30 respectively. With such a chemical composition, herbal, citrus, green, pine  
31 tree, and in some cases floral and woody odors were determined by  
32 GC/MS-O.

33 **Keywords:** natural complex substance • chemical composition • natural  
34 scent • olfactometry • joli coeur

35

36

37

## 38 INTRODUCTION

39 The genus *Hedychium* is part of the Zingiberaceae family and includes  
40 about 80 species distributed mainly in Asia. *H. gardnerianum* is a plant native to  
41 the Himalayas whose stem can be 2 meters long and its leaves 30 cm long. Its  
42 flowers can be pink or orange yellow [1-3]. It is considered an invasive plant on  
43 most of the Azores archipelago [1]. The rhizomes of the *Hedychium* species are  
44 known to be fleshy and aromatic. Some species are cultivated only to extract the  
45 fragrant essential oil from their rhizomes. Aerial parts of the *Hedychium* species  
46 can be used in the paper industry and its flowers as culinary ingredients [4].  
47 The bloom of the *Hedychium* species is very brief and usually occurs during the  
48 monsoon. The chemical profile of *Hedychium* sp. EO is reported as complex and  
49 comprising monoterpene and sesquiterpene derivatives. The compounds  $\alpha$ -  
50 pinene,  $\beta$ -pinene, eucalyptol, linalool and nerolidol, although quite ubiquitous,  
51 are described as markers of the genus *Hedychium* [4].

52 The genus *Pittosporum* belongs to the Pittosporaceae family and  
53 encompasses ca. 200 species [5]. Among these, *Pittosporum senacia* is a species  
54 found on Indian Ocean Islands. The chemical composition of EO from the  
55 whole plant from Mauritius was described in 2020 and 2021 by Jugreet et al. [5,  
56 6]. In their most recent article, the distillation yield for *P. senacia* was found to  
57 be 0.77%. The chemical composition mainly comprised monoterpene  
58 hydrocarbons (up to 71.9%), and particularly  $\beta$ -myrcene (62.2%). Other  
59 compounds found were germacrene D (7.8%), limonene (3.4%), and  $\beta$ -

60 phellandrene (2.9%). In an earlier article from 1998, EO from the leaves of *P.*  
61 *senecia corsii*, endemic to Madagascar, was studied [7]. With a distillation yield  
62 of 0.67%, 95% of the chemical composition of the EO was determined by GC-  
63 FID and GC/MS. With monoterpene hydrocarbons accounting for only 20.4%,  
64 including  $\beta$ -myrcene (6.3%),  $\alpha$ -terpinene (4.6%) and camphene (3%), the main  
65 compounds were found to be sesquiterpene hydrocarbons and derivatives  
66 (69.5%) such as  $\alpha$ -cadinol (19%),  $\alpha$ -muurolol (15.9%), and  $\delta$ -cadinene (11.3%). In  
67 the same study, the antimicrobial activity of this EO against *Staphylococcus*  
68 *aureus* was shown to outperform streptomycin, while it was in the same order  
69 of magnitude as streptomycin against *Streptococcus faecalis* [7].

70 The genus *Psidium* belongs to the Myrtaceae family which contains ca.  
71 5500 species [8, 9]. This genus is known for presenting rich essential oil bearing  
72 plants [9]. *Psidium cattleianum* is a species found in Oceania, Brazil, North  
73 America and the Caribbean [8]. The shrub is typically between 1 and 4 meters  
74 in height. The EO from the leaves of *P. cattleianum* has been described as having  
75 antifungal activities against *Candida spp.* and antibacterial activities against  
76 several strains such as *Staphylococcus aureus*, *Escherichia coli*, *Pseudomonas*  
77 *aeruginosa* in qualitative analyses with the antibiotic ampicillin as control [8].

78 The chemical composition of EO from *P. cattleianum* leaves has been  
79 studied with plants coming mainly from Brazil [8-12]. Older studies describe *P.*  
80 *cattleianum* EO harvested in Hawaii [13], Cuba [14], and California [15].

81 As part of a project dedicated to the chemical and sensory evaluation of plants  
82 from Reunion Island for applications in perfumery, the chemical composition  
83 and olfactory properties of four essential oils (EOs) for which literature data are  
84 scarce or non-existent were studied. The four species, from the Zingiberaceae,  
85 Pittosporaceae, and Myrtaceae botanical families illustrated in Figure 1 are  
86 listed hereafter:

87 - Longose (*Hedychium gardnerianum* Sheppard ex Ker-Gawl) – flowers,

88 - Yellow ginger (*Hedychium flavescens* Carey ex Roscoe) – leaves,

89 - Bois de joli coeur (*Pittosporum senacia* Putt.) – leaves,

90 - Chinese guava (*Psidium cattleianum* Afzel. Ex Sabine) – floral tops.

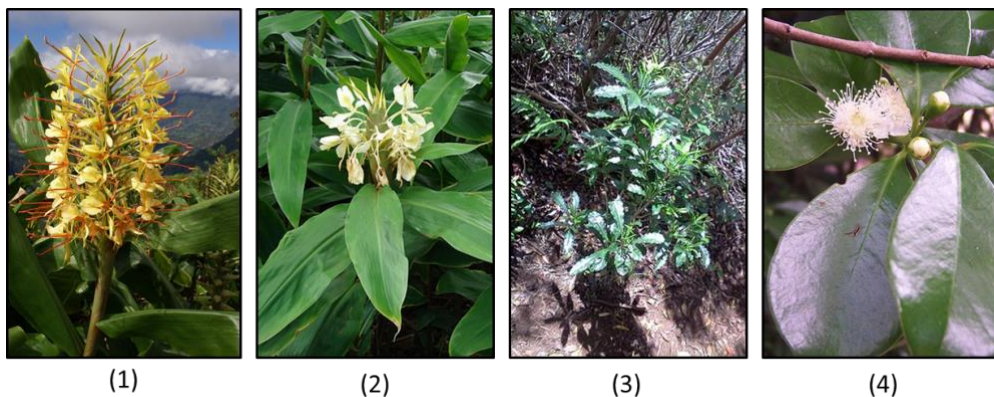
91 The aim of these studies was to determine the chemical composition of these  
92 essential oils and evaluate their olfactory profile for potential applications in  
93 perfumery.

## 94 MATERIAL AND METHODS

### 95 Plant materials

96 *H. gardnerianum*, *H. flavescens*, *P. senacia* and *P. cattleianum* were collected  
97 in 2020 on Reunion Island, in the wild between 800 and 1300 meters of altitude  
98 and their essential oils were obtained from OLICA (19 Rue Fangourin, Saint-  
99 Leu 97424, La Réunion, FRANCE).

100 The four pictures of the species in Figure 1 are licensed under the  
101 Creative Commons Attribution-Share Alike 3.0 Unported license without  
102 modification. Authors are (1) and (4) B. Navez, (2) Forest and Kim Starr, (3)  
103 Change-ecorce.



105 Figure 1. The four species studied: (1) *H. gardnerianum*, flowers; (2) *H. flavescens*,  
106 leaves; (3) *P. senacia*, leaves; (4) *P. cattleianum*, floral tops.

107

### 108 **GC/MS-FID analyses**

109 The analyses of the four EOs chemical composition were performed on  
110 an Agilent GC 7820 chromatograph coupled to an Agilent 5977B electron  
111 ionization mass spectrometer and equipped with a flame ionization detector.  
112 The column used was Agilent HP5-MS capillary column (30 m x 0.25 mm i.d.,  
113 film thickness 0.25  $\mu\text{m}$ ). The sample of EO was diluted to 1% v/v in ethyl  
114 acetate. One microliter of the sample was injected with a split ratio of 1/10.  
115 Carrier gas was helium with a flow rate of 1.2 mL/min. The temperatures of  
116 injector and source was 250 °C and 230 °C, respectively. The oven temperature

117 was programmed to stay 4 min at 40°C, then to rise from 40 to 200°C with an  
118 increase of 2 °C/min and finally from 200 to 270 °C with an increase of 8 °C/min.  
119 For the MS, ionization energy was 70 eV and the range was from 35 to 350 m/z.  
120 The FID detector was set at 270 °C with an air flow of 400 mL/min and a  
121 hydrogen flow of 40 mL/min.

## 122 **Characterization of the EOs**

123 GC/MS was used for identification and GC-FID for quantification. The  
124 identification of EO constituents was carried out by matching the retention  
125 index (RI) determined against a series of C7-C40 alkanes as well as by matching  
126 the EI-MS mass spectra obtained with various databases (NIST20, Wiley6n and  
127 internal database).

## 128 **GC/MS-O analyses**

129 GC/MS-O analyses were performed on a Perkin Elmer Clarus 690  
130 chromatograph coupled with a Perkin Elmer Clarus SQ8T mass selective  
131 detector and equipped with a Perkin Elmer sniffing port. The column was a  
132 Perkin Elmer Elite 5-MS (30m x 0.32mm i.d., film thickness 0.25µm). The sample  
133 of EO was diluted to 10% v/v in ethyl acetate. One microliter of the sample was  
134 injected with a split of 72 mL/min (inlet pressure: 23 psi). The split between the  
135 MS and the Olfactometry detector was 1:7 (v/v). The oven temperature was  
136 programmed to stay 2 min at 60 °C, to rise from 60 to 200 °C with an increase of  
137 5 °C/min, then from 200 to 280 °C with an increase of 8 °C/min and finally held  
138 at 280 °C for 5 min. The solvent delay was 5.5 min. Four panelists carried out



139 the GC/MS-O analysis in duplicate, on each of the four EOs. Compounds were  
140 annotated by matching the EI-MS mass spectra obtained with databases  
141 (NIST20).

## 142 RESULTS AND DISCUSSION

### 143 *Hedychium gardnerianum* and *Hedychium flavescens*

144 Essential oils obtained from the rhizomes of the two species *H. gardnerianum*  
145 and *H. flavescens* have been described in the literature [2-4, 16-18]. For example,  
146 Ray et al. (2018) studied 10 species of *Hedychium*, including *H. gardnerianum* and  
147 *H. flavescens*, cultivated under the same conditions in India [4]. After harvesting,  
148 the EO of each plant was collected from the rhizomes and analyzed by GC/MS  
149 and GC-FID. The distillation yield of *H. gardnerianum* and *H. flavescens* species  
150 was about 0.20%, which is lower than other species of the genus such as *H.*  
151 *thyrsiforme* (0.75%) and *H. gracile* (0.65%), and higher than others such as *H.*  
152 *flavum* (0.10%) and *H. greenii* (0.05%). The EO of *H. gardnerianum* was described  
153 as dark yellow and that of *H. flavescens* as dark brown. The chemical  
154 compositions of the two EOs were determined, accounting for 75.9% and 92.8%  
155 of oils of *H. gardnerianum* and *H. flavescens*, respectively. Both were composed  
156 mainly of monoterpene derivatives, mostly  $\beta$ -pinene and  $\alpha$ -pinene (28.03% and  
157 21.15% for *H. gardnerianum* and 29.76% and 13.17% for *H. flavescens*,  
158 respectively). Eucalyptol, one of the main compounds of *H. flavescens* (12.80%),  
159 was found in a much smaller fraction in *H. gardnerianum* (0.42%) [4].

160 The EO of *H. gardnerianum* flowers has been very little studied; to the best of  
161 our knowledge, only two papers published in 2002 and 2003 described the EO  
162 obtained from this part of the plant [1, 2] and EO extracted from the leaves of *H.*  
163 *flavescens* has never been described. Medeiros et al. (2003) studied the chemical  
164 composition of EO from *H. gardnerianum* flowers from three locations on San  
165 Miguel Island in the Azores [1]. The composition of these was determined using  
166 GC/MS analysis alone, accounting for 87%, 94% and 91% of the total EO from  
167 the three locations, respectively. Although they came from the same island,  
168 significant differences in the relative percentages of compounds were observed,  
169 although GC/MS alone can hardly provide reliable quantitative information.  
170 The main compounds of the three EOs were monoterpene hydrocarbons with  
171  $\alpha$ -pinene (8.38-18.13%),  $\beta$ -pinene (5.06-11.99%), p-cymene (3.85-8.16%),  $\gamma$ -  
172 terpinene (3.15-14.43%) and the sesquiterpene derivatives  $\alpha$ -cadinol (6.42-  
173 14.59%),  $\beta$ -caryophyllene (7.04-8.89%),  $\delta$ -cadinene (4.89-8.76%) and  $\tau$ -muurolol  
174 (2.64-5.86%). The chemical composition of EO from *H. gardnerianum* flowers  
175 from Fiji was studied by Smith et al. [2]. Up to 75% of its chemical composition  
176 was characterized by GC/MS-FID analyses.  $\beta$ -Caryophyllene (17.4%) and  $\beta$ -  
177 pinene (17.0%) were found to be the two main compounds.

#### 178 ***Hedychium gardnerianum* flowers EO analysis**

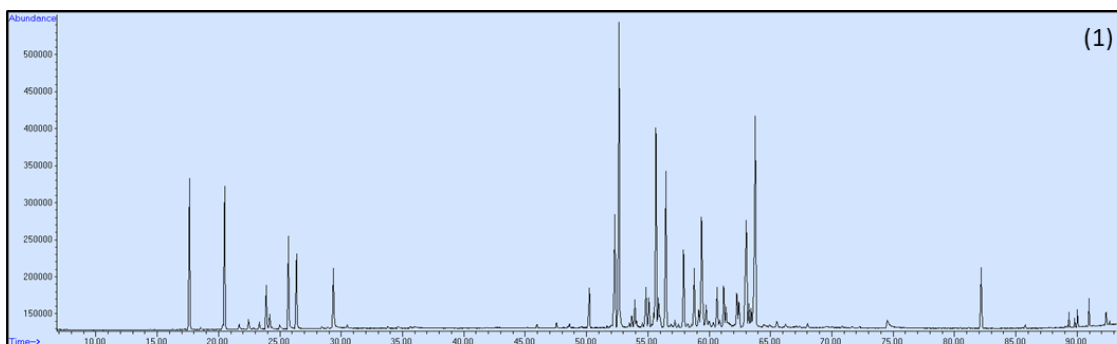
179 The sample of *H. gardnerianum* flowers EO was found to be chemically  
180 very complex (Figure 2). As shown in Table 1, a hundred compounds were  
181 detected by monodimensional gas chromatography and those identified

182 accounted for more than 87% of the EO. The sample was mainly composed of  
183 sesquiterpene derivatives including  $\beta$ -farnesene (12.05%),  $\alpha$ -cadinol (9.71%),  $\alpha$ -  
184 farnesene (7.09%),  $\tau$ -muurolol (5.89%) and  $\delta$ -cadinene (5.83%). The  
185 monoterpene derivatives identified accounted for ca. 20% with  $\alpha$ -pinene,  $\beta$ -  
186 pinene and humulene as main representatives (4.48%, 4.46% and 3.93%,  
187 respectively). The sample also contained diterpene derivatives including kaur-  
188 16-ene (2.42%).

189           Our results are in agreement with the article by Medeiros et al. (2003)  
190 concerning the study of the Eos of longose leaves and flowers (*H. gardnerianum*)  
191 from the island of San Miguel (Azores) [1]. In their study, the main compounds  
192 were  $\alpha$ -pinene,  $\beta$ -pinene, p-cymene,  $\gamma$ -terpinene,  $\beta$ -caryophyllene,  $\beta$ -cadinene  
193 and  $\alpha$ -cadinol. These compounds were all present in the sample studied herein.  
194 However,  $\beta$ -farnesene, the main compound in our sample, was identified to a  
195 much lesser extent (ca. 3%) in the study by Medeiros et al (2003). This could  
196 suggested a particular role of farnesene in plant defense particular to the  
197 Reunion Island territory for a compound known to be associated with insect  
198 attraction [19].

199

200



201

202 Figure 2. Chromatogram of *Hedychium gardnerianum* flowers essential oil.

203 **Table 1.** Chemical composition of *Hedychium gardnerianum* flowers essential oil.

Peak #	RT (min)	Area %	Compound	Formula	RI	RI litt.
1	17.625	4.48	<b><math>\alpha</math>-pinene</b>	C <sub>10</sub> H <sub>16</sub>	931	937
2	18.563	0.08	camphene	C <sub>10</sub> H <sub>16</sub>	945	952
3	20.344	0.15	sabinene	C <sub>10</sub> H <sub>16</sub>	971	974
4	20.493	4.46	<b><math>\beta</math>-pinene</b>	C <sub>10</sub> H <sub>16</sub>	973	979
5	21.682	0.21	$\beta$ -myrcene	C <sub>10</sub> H <sub>16</sub>	991	991
6	22.460	0.39	$\alpha$ -phellandrene	C <sub>10</sub> H <sub>16</sub>	1002	1005
7	22.853	0.04	3-carene	C <sub>10</sub> H <sub>16</sub>	1008	1011
8	23.339	0.24	$\alpha$ -terpinene	C <sub>10</sub> H <sub>16</sub>	1015	1017
9	23.892	1.46	<i>p</i> -cymene	C <sub>10</sub> H <sub>14</sub>	1022	1025
10	24.175	0.52	limonene	C <sub>10</sub> H <sub>16</sub>	1026	1030
11	24.363	0.08	eucalyptol	C <sub>10</sub> H <sub>16</sub> O	1029	1032
12	25.000	0.23	( <i>Z</i> )- $\beta$ -ocimene	C <sub>10</sub> H <sub>16</sub>	1038	1038
13	25.705	2.97	<b>(<i>E</i>)-<math>\beta</math>-ocimene</b>	C <sub>10</sub> H <sub>16</sub>	1048	1049
14	26.355	2.46	<b><math>\gamma</math>-terpinene</b>	C <sub>10</sub> H <sub>16</sub>	1057	1060
15	28.431	0.09	terpinolene	C <sub>10</sub> H <sub>16</sub>	1086	1088
16	28.888	0.06	methyl benzoate	C <sub>8</sub> H <sub>8</sub> O <sub>2</sub>	1093	1094
17	29.371	2.22	<b>linalool</b>	C <sub>10</sub> H <sub>18</sub> O	1100	1099

Peak #	RT (min)	Area %	Compound	Formula	RI	RI litt.
18	30.504	0.12	(E)-4.8-Dimethyl- nona-1,3,7-triene	C <sub>11</sub> H <sub>18</sub>	1116	1116
19	31.954	0.01	sabinol	C <sub>10</sub> H <sub>16</sub> O	1137	1143
20	33.804	0.09	endo-borneol	C <sub>10</sub> H <sub>18</sub> O	1164	1167
21	34.654	0.10	terpinen-4-ol	C <sub>10</sub> H <sub>18</sub> O	1176	1177
22	35.662	0.11	methyl salicylate	C <sub>8</sub> H <sub>8</sub> O <sub>3</sub>	1191	1192
23	41.904	0.06	bornyl acetate	C <sub>12</sub> H <sub>20</sub> O <sub>2</sub>	1285	1285
24	41.921	0.06	2-undecanone	C <sub>11</sub> H <sub>20</sub> O <sub>2</sub>	1285	1294
25	43.170	0.01	indole	C <sub>8</sub> H <sub>7</sub> N	1304	1295
26	45.202	0.05	δ-elemene	C <sub>15</sub> H <sub>24</sub>	1336	1338
27	45.945	0.16	α-cubebene	C <sub>15</sub> H <sub>24</sub>	1348	1351
28	47.567	0.19	α-copaene	C <sub>15</sub> H <sub>24</sub>	1374	1376
29	48.614	0.21	β-elemene	C <sub>15</sub> H <sub>24</sub>	1391	1391
30	49.628	0.04	α-gurjunene	C <sub>15</sub> H <sub>24</sub>	1407	1409
31	50.219	1.38	β-caryophyllene	C <sub>15</sub> H <sub>24</sub>	1417	1419
32	51.67	0.07	guaia-6,9-diene	C <sub>15</sub> H <sub>24</sub>	1442	1443
<b>33</b>	<b>52.281</b>	<b>3.93</b>	<b>humulene</b>	C <sub>15</sub> H <sub>24</sub>	1452	1454
<b>34</b>	<b>52.640</b>	<b>12.05</b>	<b>(6E)-β-farnesene</b>	C <sub>15</sub> H <sub>24</sub>	1458	1457
35	52.848	0.01	allo-aromadendrene	C <sub>15</sub> H <sub>24</sub>	1462	1461
36	53.484	0.18	γ-gurjunene	C <sub>15</sub> H <sub>24</sub>	1472	1473
37	53.680	0.45	γ-muurolene	C <sub>15</sub> H <sub>24</sub>	1476	1477
38	53.914	0.96	germacrene D	C <sub>15</sub> H <sub>24</sub>	1480	1481
39	54.061	0.21	α-curcumene	C <sub>15</sub> H <sub>22</sub>	1482	1483
40	54.537	0.17	Bicyclosesqui- phellandrene	C <sub>15</sub> H <sub>24</sub>	1490	1489
41	54.822	1.67	bicyclogermacrene	C <sub>15</sub> H <sub>24</sub>	1495	1495

Peak #	RT (min)	Area %	Compound	Formula	RI	RI litt.
42	55.070	1.05	$\alpha$ -muurolene	C <sub>15</sub> H <sub>24</sub>	1499	1499
43	55.461	0.43	$\beta$ -cadinene	C <sub>15</sub> H <sub>24</sub>	1506	1518
<b>44</b>	<b>55.646</b>	<b>7.09</b>	<b>(3E,6E)<math>\alpha</math>-farnesene</b>	C <sub>15</sub> H <sub>24</sub>	1509	1508
45	55.848	1.03	$\gamma$ -cadinene	C <sub>15</sub> H <sub>24</sub>	1513	1513
<b>46</b>	<b>56.449</b>	<b>5.83</b>	<b><math>\delta</math>-cadinene</b>	C <sub>15</sub> H <sub>24</sub>	1523	1524
47	56.891	0.09	cadina-1,4-diene	C <sub>15</sub> H <sub>24</sub>	1531	1532
48	57.186	0.24	$\alpha$ -cadinene	C <sub>15</sub> H <sub>24</sub>	1536	1538
49	57.476	0.12	$\alpha$ -calacorene	C <sub>15</sub> H <sub>20</sub>	1542	1542
<b>50</b>	<b>57.897</b>	<b>3.00</b>	<b>elemol</b>	C <sub>15</sub> H <sub>26</sub> O	1549	1549
51	58.246	0.18	204 161 121 105 93 69	-	1555	-
52	58.548	0.14	204 161 121 109 93 41	-	1561	-
<b>53</b>	<b>58.767</b>	<b>2.11</b>	<b>(E)-nerolidol</b>	C <sub>15</sub> H <sub>26</sub> O	1564	1564
54	59.140	0.59	202 69 41 79 93 109 55	-	1571	-
<b>55</b>	<b>59.372</b>	<b>4.33</b>	<b>222 161 119 105 91 81</b>	-	<b>1575</b>	-
56	59.444	0.55	spathulenol	C <sub>15</sub> H <sub>24</sub> O	1576	1576
57	59.735	0.75	caryophyllene oxide	C <sub>15</sub> H <sub>24</sub> O	1582	1581
58	60.000	0.19	204 161 119 105 91 81	-	1586	-
59	60.332	0.18	202 159 97 83 69 55	-	1592	-
60	60.622	1.41	220 121 107 93 88 67	-	1597	-
61	60.851	0.26	204 122 107 93 81 69	-	1602	-
62	61.179	1.46	humulene oxide	C <sub>15</sub> H <sub>24</sub> O	1608	1604
63	61.358	0.55	222 179 105 91 69 41	-	1611	-
64	62.25	1.35	220 119 93 81 67 41	-	1628	-
65	62.413	0.97	$\gamma$ -eudesmol	C <sub>15</sub> H <sub>26</sub> O	1631	1631
<b>66</b>	<b>63.024</b>	<b>5.89</b>	<b><math>\tau</math>-muurolol</b>	C <sub>15</sub> H <sub>26</sub> O	1642	1642
67	63.225	0.84	204 161 119 105 95	-	1646	-

Peak #	RT (min)	Area %	Compound	Formula	RI	RI litt.
68	63.411	0.67	$\beta$ -eudesmol	C <sub>15</sub> H <sub>26</sub> O	1649	1649
<b>69</b>	<b>63.749</b>	<b>9.71</b>	<b><math>\alpha</math>-cadinol</b>	C <sub>15</sub> H <sub>26</sub> O	1655	1653
70	64.460	0.16	200 157 142 123 93 69	-	1669	-
71	64.929	0.10	cadalene	C <sub>15</sub> H <sub>18</sub>	1677	1674
72	65.504	0.38	204 161 119 105 84 81	-	1688	-
73	66.212	0.12	220 177 159 131 117	-	1701	-
74	67.089	0.06	220 187 159 145 131	-	1719	-
75	68.005	0.21	oplopanone	C <sub>15</sub> H <sub>26</sub> O <sub>2</sub>	1736	1730
76	70.851	0.06	1-octadecene	C <sub>18</sub> H <sub>36</sub>	1792	1793
77	71.662	0.07	147 119 91 77 69 55	-	1808	-
78	72.253	0.10	187 159 119 107 93 77	-	1821	-
79	74.520	0.79	benzyl salicylate	C <sub>14</sub> H <sub>12</sub> O <sub>3</sub>	1867	1869
80	80.459	0.06	97 91 83 69 57 55	-	1993	-
81	81.149	0.05	(8 $\beta$ .13 $\beta$ )-kaur-16-ene	C <sub>20</sub> H <sub>32</sub>	2008	2012
<b>82</b>	<b>82.173</b>	<b>2.42</b>	<b>kaur-16-ene</b>	C <sub>20</sub> H <sub>32</sub>	2032	2041
83	85.762	0.11	Coronarlin E	C <sub>20</sub> H <sub>28</sub> O	2123	2136
84	87.726	0.03	207 91 83 77 69 57	-	2194	-
85	89.042	0.04	298 146 123 91 77	-	2259	-
86	89.229	0.04	281 109 96 81 67 55	-	2269	-
87	89.325	0.26	9-tricosene	C <sub>23</sub> H <sub>46</sub>	2274	2278
88	89.806	0.15	324 99 85 71 57 43	-	2299	-
89	90.032	0.34	298 174 146 131 109	-	2313	-
90	90.719	0.03	207 151 81 69 55 40	-	2358	-
91	90.956	0.52	314 190 162 95 81 55	-	2373	-
92	92.293	0.05	283 109 95 82 67 55	-	2470	-
93	92.346	0.16	281 111 97 83 69 57	-	2475	-

Peak #	RT (min)	Area %	Compound	Formula	RI	RI litt.
94	92.402	0.19	290 108 95 79 67 55	-	2479	-
95	92.658	0.04	327 113 99 85 71 57	-	2498	-
<b>Total identified</b>		<b>87.43</b>				
		%				
<b>Monoterpenes / Monoterpenoid s</b>		<b>20.28</b>				
		%				
<b>Sesquiterpenes / Sesquiterpenoid s</b>		<b>63.21</b>				
		%				

204 RT: retention time; RI: retention indices; RI litt. from NIST 2020 database. NI:

205 Not identified (12.55%). Bold: main compounds.

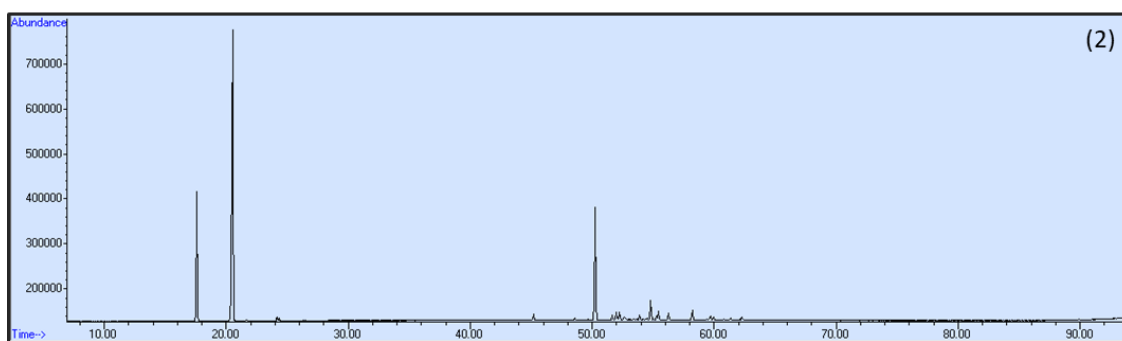
206

207 ***Hedychium flavescens* leaves EO analysis**

208 The EO sample of *H. flavescens* leaves was found to be relatively simple  
209 and to contain mainly three compounds:  $\beta$ -pinene (47.81%),  $\alpha$ -pinene (18.74%)  
210 and  $\beta$ -caryophyllene (17.47%), which together accounted for 84.02% of the  
211 sample (Figure 3). As shown in Table 2, in total, 96.26% of the EO was  
212 identified. In addition of these three compounds, monoterpene and  
213 sesquiterpene derivatives were found in smaller proportions such as the  
214 monoterpene hydrocarbons D-limonene (0.60%),  $\beta$ -myrcene (0.16%),  $\gamma$ -  
215 terpinene (0.05%) and sesquiterpene hydrocarbons bicyclogermacrene (2.65%),  
216 germacrene B (1.29%) and  $\beta$ -cadinene (1.14%).

217





218

219 Figure 3. Chromatogram of *Hedychium flavescens* leaves essential oil.

220 **Table 2.** Chemical composition of *Hedychium flavescens* leaves essential oil.

221

Peak #	RT (min)	Area %	Compound	Formula	RI	RI litt.
1	17.625	18.74	$\alpha$ -pinene	C <sub>10</sub> H <sub>16</sub>	931	937
2	18.553	0.04	camphene	C <sub>10</sub> H <sub>16</sub>	945	952
3	20.553	47.81	$\beta$ -pinene	C <sub>10</sub> H <sub>16</sub>	974	979
4	21.715	0.16	$\beta$ -myrcene	C <sub>10</sub> H <sub>16</sub>	991	991
5	23.562	0.05	$\alpha$ -terpinene	C <sub>10</sub> H <sub>16</sub>	1018	1017
6	24.093	0.02	<i>p</i> -cymene	C <sub>10</sub> H <sub>14</sub>	1025	1025
7	24.183	0.60	limonene	C <sub>10</sub> H <sub>16</sub>	1026	1030
8	24.352	0.42	eucalyptol	C <sub>10</sub> H <sub>18</sub> O	1029	1032
9	25.113	0.05	( <i>Z</i> )- $\beta$ -ocimene	C <sub>10</sub> H <sub>16</sub>	1040	1038
10	25.799	0.05	( <i>E</i> )- $\beta$ -ocimene	C <sub>10</sub> H <sub>16</sub>	1049	1049
11	26.391	0.05	$\gamma$ -terpinene	C <sub>10</sub> H <sub>16</sub>	1058	1060
12	28.483	0.03	$\alpha$ -terpinolene	C <sub>10</sub> H <sub>16</sub>	1087	1088
13	29.398	0.02	linalool	C <sub>10</sub> H <sub>18</sub> O	1100	1099
14	31.920	0.01	pinocarveol	C <sub>10</sub> H <sub>16</sub> O	1137	1138
15	34.619	0.02	terpinen-4-ol	C <sub>10</sub> H <sub>18</sub> O	1176	1177
16	35.661	0.03	1-dodecene	C <sub>12</sub> H <sub>24</sub>	1191	1190

Peak #	RT (min)	Area %	Compound	Formula	RI	RI litt.
17	45.195	0.90	$\delta$ -elemene	C <sub>10</sub> H <sub>18</sub> O	1336	1338
18	47.567	0.02	$\alpha$ -copaene	C <sub>11</sub> H <sub>18</sub>	1374	1376
19	48.606	0.24	$\beta$ -elemene	C <sub>15</sub> H <sub>24</sub>	1391	1391
20	49.650	0.06	$\beta$ -maaliene	C <sub>15</sub> H <sub>24</sub>	1408	1398
<b>21</b>	<b>50.269</b>	<b>17.47</b>	<b><math>\beta</math>-caryophyllene</b>	C <sub>15</sub> H <sub>24</sub>	1418	1419
22	51.215	0.33	$\gamma$ -elemene	C <sub>15</sub> H <sub>24</sub>	1434	1434
23	51.673	0.66	guaia-6,9-diene	C <sub>15</sub> H <sub>24</sub>	1442	1443
24	51.996	1.19	204 161 133 119 105	-	1447	-
25	52.257	1.20	humulene	C <sub>15</sub> H <sub>24</sub>	1452	1454
26	52.658	0.27	(3 <i>E</i> ,6 <i>E</i> )- $\alpha$ -farnesene	C <sub>15</sub> H <sub>24</sub>	1458	1457
27	52.683	0.27	allo-aromadendrene	C <sub>15</sub> H <sub>24</sub>	1459	1461
28	53.430	0.12	204 161 121 105 93 55	-	1471	-
29	53.659	0.08	204 161 133 119 105	-	1475	-
30	53.902	0.55	germacrene D	C <sub>15</sub> H <sub>24</sub>	1479	1481
31	54.202	0.02	204 189 147 122 108	-	1484	-
32	54.369	0.08	$\beta$ -selinene	C <sub>15</sub> H <sub>24</sub>	1487	1486
33	54.521	0.14	204 189 161 104 91	-	1490	-
<b>34</b>	<b>54.818</b>	<b>2.65</b>	<b>bicyclogermacrene</b>	C <sub>15</sub> H <sub>24</sub>	1495	1495
35	55.057	0.02	161 136 105 95 91 53	-	1499	-
36	55.298	0.45	204 147 107 93 81 67	-	1503	-
37	55.454	1.14	$\beta$ -cadinene	C <sub>15</sub> H <sub>24</sub>	1506	1518
38	56.277	0.89	204 161 136 121 105	-	1520	-
39	56.647	0.02	122 119 107 91 77	-	1527	-
40	57.524	0.03	$\alpha$ -calacorene	C <sub>15</sub> H <sub>20</sub>	1542	1542
41	58.010	0.02	106 91 79 41	-	1551	-
42	58.235	1.29	germacrene B	C <sub>15</sub> H <sub>24</sub>	1555	1557

Peak #	RT (min)	Area %	Compound	Formula	RI	RI litt.
43	59.428	0.07	spathulenol	C <sub>15</sub> H <sub>24</sub> O	1576	1576
44	59.706	0.49	caryophyllene oxyde	C <sub>15</sub> H <sub>24</sub> O	1581	1581
45	59.987	0.44	204 161 119 105 91 81	-	1586	-
46	60.843	0.08	161 105 93 81 77 67	-	1601	-
47	61.360	0.18	204 179 161 119 105	-	1610	-
48	62.099	0.07	204 161 119 105 91	-	1624	-
49	62.309	0.43	isospathulenol	C <sub>15</sub> H <sub>24</sub> O	1627	1638
50	63.668	0.01	204 161 121 91 81	-	1651	-
<b>Total identified</b>		<b>96.26 %</b>				
<b>Monoterpenes / Monoterpenoid s</b>		<b>68.08 %</b>				
<b>Sesquiterpenes / Sequiterpenoid s</b>		<b>28.16 %</b>				

222 RT: retention time; RI: retention indices; RI litt. from NIST 2020 database. NI:

223 Not identified (3.72%). Bold: main compounds.

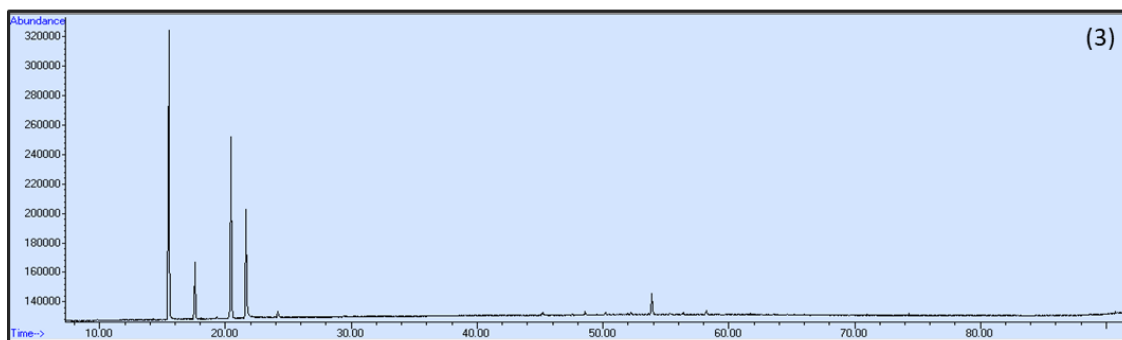
224

225 To our knowledge, the chemical composition of the EO obtained solely  
226 from the leaves of *H. flavescens* have not been published so far. In the most  
227 recent article on the EO of *H. flavescens* rhizomes, 78.05% of a sample obtained  
228 from a plant grown in India could be identified.[4] The main compounds  
229 described were  $\beta$ -pinene (24.77%) and  $\alpha$ -pinene (11.17%), both present in large  
230 proportions in our sample (47.81 and 18.74%, respectively), together with  $\beta$ -  
231 caryophyllene and bicyclogermacrene.

232 ***Pittosporum senacia* leaves EO analysis**

233 The relatively simple composition of the EO from *Pittosporum senacia*  
 234 leaves was determined for more than 99% of the total EO (Figure 4). As  
 235 presented in Figure 4. Chromatogram of *Pittosporum senacia* leaves essential oil.

236 **Table 3**, its chemical profile essentially contained four compounds: the  
 237 C9 linear alkane hydrocarbon nonane (36.24%) and three monoterpene  
 238 derivatives,  $\beta$ -pinene (25.11%),  $\beta$ -myrcene (19.19%) and  $\alpha$ -pinene (7.36%),  
 239 which together accounted for 87.9%. Moreover, the chemical profile included  
 240 monoterpene derivatives such as limonene (1.46%), (Z)- and (E)- $\beta$ -ocimene  
 241 (0.01% and 0.09%, respectively), sesquiterpene derivatives like germacrene D  
 242 (3.68%), humulene (0.40%), as well as other alkanes like decane (0.09%) and  
 243 undecane (0.56%).



244  
 245 Figure 4. Chromatogram of *Pittosporum senacia* leaves essential oil.

246 **Table 3.** Chemical composition of *Pittosporum senacia* leaves essential oil.

Peak #	RT (min)	Area %	Compound	Formula	RI	RI litt.
1	15.492	36.24	nonane	C <sub>9</sub> H <sub>20</sub>	900	900

Peak #	RT (min)	Area %	Compound	Formula	RI	RI litt.
2	17.233	0.03	$\alpha$ -thujene	C <sub>10</sub> H <sub>16</sub>	925	929
3	<b>17.578</b>	<b>7.36</b>	<b><math>\alpha</math>-pinene</b>	<b>C<sub>10</sub>H<sub>16</sub></b>	<b>930</b>	<b>937</b>
4	18.984	0.06	camphene	C <sub>10</sub> H <sub>16</sub>	951	952
5	<b>20.464</b>	<b>25.11</b>	<b><math>\beta</math>-pinene</b>	<b>C<sub>10</sub>H<sub>16</sub></b>	<b>973</b>	<b>979</b>
6	<b>21.675</b>	<b>19.19</b>	<b><math>\beta</math>-myrcene</b>	<b>C<sub>10</sub>H<sub>16</sub></b>	<b>991</b>	<b>991</b>
7	22.628	0.09	decane	C <sub>10</sub> H <sub>22</sub>	1004	1000
8	22.843	0.05	$\alpha$ -phellandrene	C <sub>10</sub> H <sub>16</sub>	1008	1005
9	23.605	0.07	$\alpha$ -terpinene	C <sub>10</sub> H <sub>16</sub>	1018	1017
10	24.131	0.06	<i>p</i> -cymene	C <sub>10</sub> H <sub>14</sub>	1026	1025
11	24.183	1.46	limonene	C <sub>10</sub> H <sub>16</sub>	1026	1030
12	25.145	0.01	( <i>Z</i> )- $\beta$ -ocimene	C <sub>10</sub> H <sub>16</sub>	1040	1038
13	25.818	0.09	( <i>E</i> )- $\beta$ -ocimene	C <sub>10</sub> H <sub>16</sub>	1050	1049
14	26.414	0.22	$\gamma$ -terpinene	C <sub>10</sub> H <sub>16</sub>	1058	1060
15	28.474	0.08	terpinolene	C <sub>10</sub> H <sub>16</sub>	1087	1088
16	29.383	0.56	undecane	C <sub>11</sub> H <sub>24</sub>	1100	1100
17	30.518	0.04	( <i>E</i> )-4,8-dimethyl-nona-1,3,7-triene	C <sub>11</sub> H <sub>18</sub>	1116	1116
18	35.662	0.05	1-dodecene	C <sub>12</sub> H <sub>24</sub>	1191	1190
19	36.632	0.05	decanal	C <sub>10</sub> H <sub>20</sub> O	1205	1206
20	45.180	0.81	$\delta$ -elemene	C <sub>15</sub> H <sub>24</sub>	1336	1338
21	45.941	0.03	$\alpha$ -cubebene	C <sub>15</sub> H <sub>24</sub>	1348	1351
22	47.279	0.05	$\alpha$ -ylangene	C <sub>15</sub> H <sub>24</sub>	1370	1372
23	47.557	0.12	$\alpha$ -copaene	C <sub>15</sub> H <sub>24</sub>	1374	1376
24	48.602	0.56	$\beta$ -elemene	C <sub>15</sub> H <sub>24</sub>	1391	1391
25	50.222	0.48	$\beta$ -caryophyllene	C <sub>15</sub> H <sub>24</sub>	1417	1419
26	50.795	0.15	$\beta$ -copaene	C <sub>15</sub> H <sub>24</sub>	1427	1432

Peak #	RT (min)	Area %	Compound	Formula	RI	RI litt.
27	51.134	0.15	$\gamma$ -elemene	C <sub>15</sub> H <sub>24</sub>	1433	1434
28	51.405	0.05	$\alpha$ -guaiene	C <sub>15</sub> H <sub>24</sub>	1437	1439
29	51.682	0.10	guaia-6,9-diene	C <sub>15</sub> H <sub>24</sub>	1442	1443
30	52.006	0.20	161 133 105 91 79 69	-	1447	-
31	52.242	0.40	humulene	C <sub>15</sub> H <sub>24</sub>	1451	1454
32	52.842	0.03	<i>cis</i> -muurola-4(15),5-diene	C <sub>15</sub> H <sub>24</sub>	1461	1463
<b>33</b>	<b>53.910</b>	<b>3.68</b>	<b>germacrene D</b>	C <sub>15</sub> H <sub>24</sub>	1479	1481
34	54.213	0.03	$\beta$ -selinene	C <sub>15</sub> H <sub>24</sub>	1485	1486
35	54.519	0.06	161 105 91 44	-	1490	-
36	54.720	0.07	161 105 91	-	1493	-
37	55.057	0.06	$\alpha$ -muurolene	C <sub>15</sub> H <sub>24</sub>	1499	1499
38	55.304	0.21	$\alpha$ -elemene	C <sub>15</sub> H <sub>24</sub>	1503	1462
39	55.834	0.11	$\gamma$ -cadinene	C <sub>15</sub> H <sub>24</sub>	1512	1513
40	56.407	0.39	cadina-1(10),4-diene	C <sub>15</sub> H <sub>24</sub>	1523	1524
41	56.650	0.03	122 43	-	1527	-
42	58.244	0.65	germacrene B	C <sub>15</sub> H <sub>24</sub>	1555	1557
43	60.289	0.10	1-hexadecene	C <sub>16</sub> H <sub>32</sub>	1591	1592
44	61.085	0.04	rosifoliol	C <sub>15</sub> H <sub>26</sub> O	1606	1600
45	63.633	0.09	$\tau$ -muurolol	C <sub>15</sub> H <sub>26</sub> O	1653	1642
46	70.847	0.03	1-octadecene	C <sub>18</sub> H <sub>36</sub>	1792	1793
<b>Total identified</b>			<b>99.09 %</b>			
<b>Monoterpenes / Monoterpenoids</b>			<b>53.78 %</b>			
<b>Sesquiterpenes / Sesquiterpenoids</b>			<b>8.19 %</b>			

247 RT: retention time; RI: retention indices; RI litt. from NIST 2020 database.

248 NI: Not identified (0.41%). Bold: main compounds.

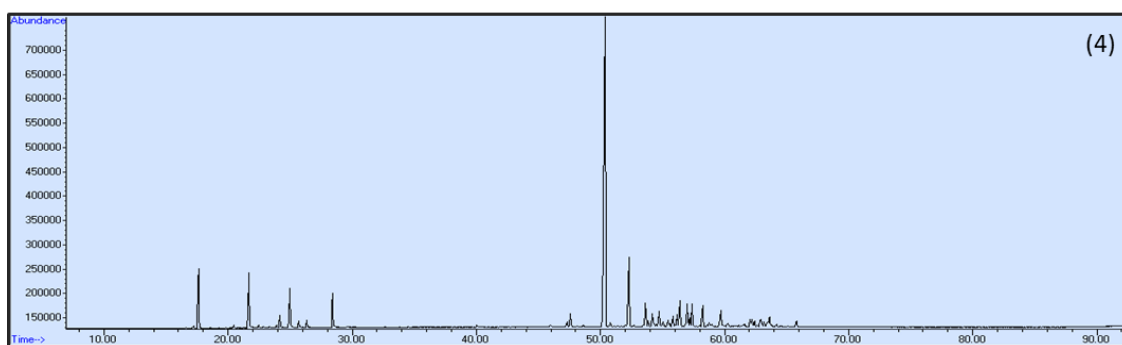
249 Many of the metabolites present in the study by B. S. Jugreet et al.  
250 published in 2021 on the EO of *P. senacia* (whole plant) from Mauritius [5], were  
251 also identified in our sample such as  $\beta$ -myrcene, germacrene D,  $\alpha$ -muurolene,  
252 limonene,  $\alpha$ -pinene,  $\alpha$ -thujene, p-cymene,  $\beta$ -ocimene,  $\beta$ -elemene,  $\beta$ -  
253 caryophyllene, and humulene. The alkanes nonane, decane, and undecane were  
254 not reported in the article by B. S. Jugreet et al. However, some alkanes,  
255 including nonane, have already been identified in the EO of the genus  
256 *Pittosporum*, such as in an endemic species of the Philippines, *P. resiniferum* [20].  
257 Interestingly, nonane, a compound described as insect attractant,[21] was found  
258 in 36.24% in our sample.

### 259 ***Psidium cattleianum* floral tops EO analysis**

260 In the most recent study, a distillation yield of 0.83% was reported for  
261 EO from *P. cattleianum* leaves [8]. A total of 68 compounds were observed  
262 within the oil, 60 of which could be identified.  $\beta$ -Caryophyllene was the main  
263 compound found in 14.7%, followed by eucalyptol (11.7%) and  $\gamma$ -muurolene  
264 (5.6%). The second most recent paper, published in 2019, describes the EO of  
265 the leaves of *P. cattleianum*. The EO was mainly composed of sesquiterpene and  
266 monoterpene derivatives (47.8% and 28.7%, respectively). A total of 46  
267 compounds were identified with  $\beta$ -caryophyllene (23.4%), caryophyllene oxide  
268 (11.4%) and  $\alpha$ -pinene (11.3%) as the main compounds [9]. Our results are in

269 agreement with this study (Figure 5), whose main compounds described were  
 270  $\beta$ -caryophyllene and  $\alpha$ -pinene at 23.42% and 11.31%, respectively,  
 271 caryophyllene oxide being present in 1.67%. Indeed, the chemical profile of the  
 272 EO sample from *P. cattleianum* floral tops was identified at 88.41%. As shown in  
 273 Table 4, nearly 70% of the composition was consisting in sesquiterpene  
 274 derivatives including the main compound,  $\beta$ -caryophyllene, present at 43.68%  
 275 In addition, fifteen monoterpene derivatives have been observed and identified.  
 276 The four main monoterpenes were  $\beta$ -myrcene (4.67%),  $\alpha$ -pinene (4.50%), (*Z*)- $\beta$ -  
 277 ocimene (3.23%) and terpinolene (2.98%).

278



279

280 Figure 5. Chromatogram of *Psidium cattleianum* leaves essential oil.

281 **Table 4.** Chemical composition of *Psidium cattleianum* leaves essential oil.

282

Peak #	RT (min)	Area %	Compound	Formula	RI	RI litt.
1	16.610	0.03	5,5-Dimethyl-1-vinylbicyclo[2,1,1]hexane	C <sub>10</sub> H <sub>16</sub>	916	921



Peak #	RT (min)	Area %	Compound	Formula	RI	RI litt.
2	17.214	0.15	$\alpha$ -thujene	C <sub>10</sub> H <sub>16</sub>	925	929
<b>3</b>	<b>17.611</b>	<b>4.50</b>	<b><math>\alpha</math>-pinene</b>	C <sub>10</sub> H <sub>16</sub>	931	937
4	18.920	0.01	camphene	C <sub>10</sub> H <sub>16</sub>	950	952
5	20.475	0.19	$\beta$ -pinene	C <sub>10</sub> H <sub>16</sub>	973	979
<b>6</b>	<b>21.677</b>	<b>4.67</b>	<b><math>\beta</math>-myrcene</b>	C <sub>10</sub> H <sub>16</sub>	991	991
7	22.467	0.24	$\alpha$ -phellandrene	C <sub>10</sub> H <sub>16</sub>	1002	1005
8	22.864	0.14	3-carene	C <sub>10</sub> H <sub>16</sub>	1008	1011
9	23.360	0.12	4-carene	C <sub>10</sub> H <sub>16</sub>	1015	1009
10	23.901	0.19	<i>p</i> -cymene	C <sub>10</sub> H <sub>14</sub>	1022	1025
11	24.181	1.07	limonene	C <sub>10</sub> H <sub>16</sub>	1026	1030
<b>12</b>	<b>24.984</b>	<b>3.23</b>	<b>(Z)-<math>\beta</math>-ocimene</b>	C <sub>10</sub> H <sub>16</sub>	1038	1038
13	25.710	0.56	(E)- $\beta$ -ocimene	C <sub>10</sub> H <sub>16</sub>	1048	1049
14	26.346	0.63	$\gamma$ -terpinene	C <sub>10</sub> H <sub>16</sub>	1057	1060
<b>15</b>	<b>28.421</b>	<b>2.98</b>	<b>terpinolene</b>	C <sub>10</sub> H <sub>16</sub>	1086	1088
16	40.039	0.23	linalyl acetate	C <sub>12</sub> H <sub>20</sub> O <sub>2</sub>	1257	1257
17	45.984	0.27	161 136 121 105 93 67	-	1349	-
18	47.293	0.44	$\alpha$ -ylangene	C <sub>15</sub> H <sub>24</sub>	1370	1372
19	47.581	1.18	$\alpha$ -copaene	C <sub>15</sub> H <sub>24</sub>	1374	1376
20	48.127	0.07	$\alpha$ -bourbornene	C <sub>15</sub> H <sub>24</sub>	1383	1384
21	48.598	0.12	204 121 108 93 81 55	-	1391	
22	49.495	0.03	tetradecene	C <sub>14</sub> H <sub>28</sub>	1405	1392
23	49.641	0.03	204 189 161 119 105	-	1408	-
<b>24</b>	<b>50.374</b>	<b>43.68</b>	<b><math>\beta</math>-caryophyllene</b>	C <sub>15</sub> H <sub>24</sub>	1420	1419
25	50.818	0.42	$\gamma$ -elemene	C <sub>15</sub> H <sub>24</sub>	1427	1434
26	51.387	0.07	aromadendrene	C <sub>15</sub> H <sub>24</sub>	1437	1440
27	51.672	0.10	204 161 133 119 105 91	-	1442	-

Peak #	RT (min)	Area %	Compound	Formula	RI	RI litt.
28	52.009	0.16	204 161 119 105 91 79	-	1447	-
<b>29</b>	<b>52.278</b>	<b>6.49</b>	<b>humulene</b>	C <sub>15</sub> H <sub>24</sub>	1452	1454
30	52.709	0.18	9-epi-caryophyllene	C <sub>15</sub> H <sub>24</sub>	1459	1466
<b>31</b>	<b>53.640</b>	<b>2.32</b>	<b>γ-muurolene</b>	C <sub>15</sub> H <sub>24</sub>	1475	1477
32	53.874	0.50	α-amorphene	C <sub>15</sub> H <sub>24</sub>	1479	1482
33	54.197	1.27	β-selinene	C <sub>15</sub> H <sub>24</sub>	1484	1486
34	54.307	0.29	204 133 119 107 93 79	-	1486	-
35	54.517	0.25	204 189 161 133 91	-	1490	-
36	54.727	1.70	204 161 133 119 105 93	-	1493	-
37	55.059	0.34	α-muurolene	C <sub>15</sub> H <sub>24</sub>	1499	1499
38	55.454	0.51	204 161 134 119 105	-	1506	-
39	55.575	0.26	122 109 93 79 69	-	1508	-
40	55.837	0.87	β-bisabolene	C <sub>15</sub> H <sub>24</sub>	1513	1509
41	56.175	0.88	γ-cadinene	C <sub>15</sub> H <sub>24</sub>	1519	1513
<b>42</b>	<b>56.401</b>	<b>2.38</b>	<b>cadina-1(10),4-diene</b>	C <sub>15</sub> H <sub>24</sub>	1523	1524
<b>43</b>	<b>57.015</b>	<b>2.35</b>	<b>204 189 161 133 105 91</b>	-	1533	-
44	57.184	0.74	204 189 161 133 105	-	1536	-
<b>45</b>	<b>57.385</b>	<b>2.06</b>	<b>selina-3,7(11)-diene</b>	C <sub>15</sub> H <sub>24</sub>	1540	1542
46	57.987	0.11	161 109 95 91 79 69	-	1551	-
47	58.238	1.84	germacrene B	C <sub>15</sub> H <sub>24</sub>	1555	1557
48	58.604	0.17	204 189 133 119 105	-	1562	-
49	58.749	0.33	nerolidol	C <sub>15</sub> H <sub>26</sub> O	1564	1564
50	58.978	0.19	204 161 123 111 69 55	-	1568	-
51	59.701	1.67	caryophyllene oxyde	C <sub>15</sub> H <sub>24</sub> O	1581	1581
52	60.284	0.44	204 161 119 105 91 79	-	1591	-
53	60.593	0.07	204 161 119 107 93 79	-	1597	-

Peak #	RT (min)	Area %	Compound	Formula	RI	RI litt.
54	60.746	0.10	161 133 121 93 82 77	-	1600	-
55	60.956	0.09	204 161 133 119 105 95	-	1603	-
56	61.162	0.17	147 138 109 96 93 67	-	1607	-
57	61.623	0.29	202 187 131 123 91	-	1616	-
58	62.084	0.71	204 161 119 105 91	-	1624	-
59	62.221	0.78	204 161 119 105 91	-	1627	-
60	62.424	0.54	204 179 161 119 105	-	1631	-
61	62.642	0.14	159 136 107 91 79 69	-	1635	-
62	62.969	1.09	$\tau$ -cadinol	C <sub>15</sub> H <sub>26</sub> O	1641	1640
63	63.198	0.36	204 161 119 105 93	-	1645	-
64	63.489	0.41	202 187 121 105 91	-	1651	-
65	63.630	0.87	$\tau$ -muurolol	C <sub>15</sub> H <sub>26</sub> O	1653	1642
66	64.190	0.20	204 189 161 133 107	-	1664	-
67	65.113	0.06	126 119 111 77 55	-	1681	-
68	65.807	0.49	eudesm-7(11)-en-4-ol	C <sub>15</sub> H <sub>26</sub> O	1694	1692
<b>Total identified</b>		<b>88.41 %</b>				
<b>Monoterpenes / Monoterpenoids</b>		<b>18.70 %</b>				
<b>Sesquiterpenes / Sequiterpenoids</b>		<b>69.99 %</b>				

283 RT: retention time; RI: retention indices; RI litt. from NIST 2020 database.

284 NI: Not identified (11.61%). Bold: main compounds.

285

### 286 Olfactory analysis

287 Olfactory evaluation of the four essential oils was performed by a panel

288 of 4 persons by GC/MS-O analysis. The objective was to obtain an overview of

289 the main contributors to the overall scent of each EO which was found to be  
 290 generally woody, a family of olfactory properties highly priced in modern  
 291 perfumery.

292 In Table 5, the main aroma-active compounds and their odor properties  
 293 are presented.

294 **Table 5.** Overview of the main contributors of the four EOs.

	RT (min)	RI <sub>apolar</sub>	Annotated compound	Scent description
<b><i>H. gardnerianum</i>, flowers EO</b>	9.55	1144	Sabinol*	Floral
	17.23	N.D.	Unknown**	Woody
	22.48	16.94	Unknown	Floral
<b><i>H. flavescens</i>, leaves, EO</b>	8.55	1093	Terpinolene	Woody
	17.35	1512	<i>trans</i> - $\alpha$ -bisabolene	Woody, rose
<b><i>P. senecia</i>, leaves, EO</b>	6.61	N.D.	$\beta$ -pinene	Pine, Green
	8.53	1092	Terpinolene	Woody
<b><i>P. cattleianum</i>, floral tops, EO</b>	6.42	979	$\beta$ -pinene	Pine, Green
	8.26	1078	Unknown**	Woody
	11.80	1261	Unknown	Citrus, spicy

295 \*Tentative assignation. \*\*No peak detectable.

296

297 *Hedychium gardnerianum* flowers EO presented three characteristic areas,  
 298 a woody area identified by 2 panelists out of 4, and two floral area for 2  
 299 panelists out of 4.

300 GC/MS-O analysis of EO from *Hedychium flavescens* leaves revealed a  
 301 main contributor with a fresh, woody and green scent which was annotated as

302  $\gamma$ -elemene. The presence of woody, earthy, and green area was highlighted by 5  
303 panelists out of 5, floral and rose area by 4 panelists out of 5 and mint, herbal,  
304 and citrus area by 2 panelists out of 5.

305 Main aroma-active compounds of *Pittosporum senacia* leaves EO were  
306 annotated as  $\beta$ -myrcene with a green, woody and spicy scent and as terpinolene  
307 with a moss and woody scent. The GC/MS-O analysis revealed herbal, and pine  
308 tree area for 5 panelists out of 5 as well as floral and citrus area for 5 panelists  
309 out of 5.

310 Finally, *Psidium cattleianum* floral tops EO showed three characteristic  
311 scents with  $\beta$ -myrcene and two unknown compounds, eluting at 8.9 min and  
312 13.25 min, respectively, both with floral scent. In addition of these markers,  
313 pine tree scent was found by 4 panelists out of 4, woody, and earthy area by 4  
314 panelists out of 4, floral area by 2 panelists out of 4, and citrus with  
315 mossy/earthy area by 2 panelists out of 4. In addition to these main  
316 contributors, others smaller contributors as linalool, with floral and fresh scent,  
317 was detected in each of the four EOs GC/MS-O analyses.

318

## 319 **CONCLUSION**

320 In general, the chemical composition of an EO varies according to many  
321 factors such as the year of harvest, the geographical area, the climate, the  
322 storage of the raw material, the duration of storage of the plant before  
323 extraction, the extraction process [22]. Two EOs from the same species may

324 therefore have a different chemical composition. Nevertheless, the chemical  
325 profile and chemical markers may be specific to a given plant or chemotype.  
326 The analysis and authentication tasks can be sometimes complicated by  
327 conformity or adulteration issues [23, 24].

328 In this context, the main goal of our work was to characterize for the first  
329 time the EOs of the four species harvested on Reunion Island and to compare  
330 their chemical profiles with those described in the literature with samples  
331 collected in other locations. We used two complementary analyses, gas  
332 chromatography coupled with mass spectrometry (GC/MS) and with flame  
333 ionization detector (GC-FID), to obtain the most complete description.

334 Additionally, an olfactory analysis was performed on these four EOs by gas  
335 chromatography coupled with mass spectrometry and olfactometry (GC/MS-  
336 O). The chemical composition of each essential oil was identified in more than  
337 87.43% for *H. gardnerianum* flowers, 96.26% for *H. flavescens* leaves, 99.09% for *P.*  
338 *senecia* leaves and 88.41% for *P. cattleianum* floral tops.

339 The chemical composition of *H. gardnerianum* EO, mostly composed of  
340 mono- and sesquiterpene hydrocarbons of low complexity, was found to be  
341 consistent with other EOs within natural variability due to differences in their  
342 geographical origin (islands from Atlantic, Pacific, and Indian oceans). The  
343 sample was mainly composed of sesquiterpene derivatives including  $\beta$ -  
344 farnesene (12.05%),  $\alpha$ -cadinol (9.71%),  $\alpha$ -farnesene (7.09%),  $\tau$ -muurolol (5.89%)

345 and  $\delta$ -cadinene (5.83%). The monoterpene derivatives identified accounted for  
346 about 20% (mostly  $\alpha$ -pinene,  $\beta$ -pinene and humulene).

347 For the EO from *H. flavescens* leaves, our study provided the first  
348 description of its chemical composition, which appeared to be rather simple  
349 and to contain mostly hydrocarbons. The main compounds were found to be  $\beta$ -  
350 pinene (47.81%),  $\alpha$ -pinene (18.74%) and  $\beta$ -caryophyllene (17.47%), which  
351 together accounted for 84.02% of the sample.

352 For the *P. senacia*, while  $\beta$ -myrcene was found to be an important  
353 constituent of the EO, as was the case for material from Madagascar and  
354 Mauritius, which are geographically close to French Reunion, the composition  
355 was different but consistent, and the striking difference was the presence of  
356 nonane. The oil primarily contained nonane (36.24%),  $\beta$ -pinene (25.11%),  $\beta$ -  
357 myrcene (19.19%) and  $\alpha$ -pinene (7.36%), together accounting for 87.9% of the  
358 composition.

359 Lastly, the composition of the *P. cattleianum* EO was very consistent with  
360 other studies, with 70% sesquiterpene derivatives including the main  
361 compound,  $\beta$ -caryophyllene, present at 43.68%.

362 With these compositions mostly based on mono- and sesquiterpene  
363 hydrocarbons, it came as no surprise that the panelists described the scent of  
364 these EOs as herbal, citrus, green, pine tree, and in some cases floral and  
365 woody.

366           With these results in hand, these endemic essential oils from Reunion  
367 could receive in the future further attention for applications in fragrance and  
368 cosmetic products. Future work could include the determination of odor impact  
369 molecules by aroma extract dilution analysis based on the GC-O studies  
370 presented herein.

#### 371 **AUTHOR CONTRIBUTIONS**

372 CONCEPTUALIZATION, M.C AND S.A.; METHODOLOGY, M.C AND S.A.;  
373 INVESTIGATION, M.C, M.T. AND S.A.; RESOURCES, S.A.; DATA  
374 CURATION, M.C, M.T. AND S.A.; WRITING – ORIGINAL DRAFT  
375 PREPARATION, M.C AND S.A.; WRITING – REVIEW & EDITING, M.C, M.T.  
376 AND S.A.; SUPERVISION, S.A.; PROJECT ADMINISTRATION, M.C, M.T.  
377 AND S.A.

#### 378 **ACKNOWLEDGEMENTS**

379           This work was supported by Université Côte d'Azur, CNRS and  
380 Technopole de la Réunion in the framework of the Insola Scent project (Sophie  
381 Afchain). We are grateful to Charlotte Richard and Julie Abdalla for  
382 contributing to the olfactory evaluation during GC-O analyses and Dr.  
383 Catherine Buchanan for proofreading.

#### 384 **CONFLICTS OF INTEREST**

385           The authors declare no conflict of interest.



- 387 [1] Medeiros, J.R., Campos, L.B., Mendonça, S.C., Davin, L.B. and Lewis, N.G.  
388 Composition and antimicrobial activity of the essential oils from invasive species of the  
389 Azores, *Hedychium gardnerianum* and *Pittosporum undulatum*. *Phytochemistry* 2003,  
390 64, 561-565.
- 391 [2] Ali, S., Sotheeswaran, S., Tuiwawa, M. and Smith, R.M. Comparison of the  
392 composition of the essential oils of *Alpinia* and *Hedychium* species-essential oils of Fijian  
393 plants, Part 1. *J. Essent. Oil Res.* 2002, 14, 409-411.
- 394 [3] Weyerstahl, P., Marschall, H., Thefeld, K. and Subba, G.C. Constituents of the  
395 essential oil from the rhizomes of *Hedychium gardnerianum* Roscoe. *Flavour Fragr. J.*  
396 1998, 13, 377-388.
- 397 [4] Ray, A., Sudipta, J., Basudeba, K., Ambika, S., Pratap, C.P., Sanghamitra, N. and  
398 Namita, M. Volatile metabolite profiling of ten *Hedychium* species by gas  
399 chromatography mass spectrometry coupled to chemometrics. *Ind. Crops Prod.* 2018,  
400 126, 135-142.
- 401 [5] Jugreet, B.S., Ibrahime, S.K., Zengin, G., Abdallah, H.H. and Mahomoodally, M.F.  
402 GC/MS profiling, in vitro and in silico pharmacological screening and principal  
403 component analysis of essential oils from three exotic and two endemic plants from  
404 Mauritius. *Chem. Biodiv.* 2021, 18, e2000921.
- 405 [6] Jugreet, B.S. and Mahomoodally, M.F. Essential oils from 9 exotic and endemic  
406 medicinal plants from Mauritius shows in vitro antibacterial and antibiotic potentiating  
407 activities. *S. Afr. J. Bot.* 2020, 132, 355-362.
- 408 [7] Mananjarasoa, E., Mananjarasoa, E., Rakotovao, M., Ramanoelina, A.R.P.,  
409 Andriantsiferana, M.H. and Ravaonindrina, N. Composition and antimicrobial activity of  
410 leaf oil of *Pittosporum senacia* var. *coursii* Cufodontis. *J. Essent. Oil Res.* 1998, 10, 459-  
411 462.
- 412 [8] Savoldi, T.L., Glamočlija, J., Soković, M., Gonçalves, J.E., Ruiz, S.P., Linde, G.A.,  
413 Gazim, Z.C. and Colauto, N.B. Antimicrobial activity of essential oil from *Psidium*  
414 *cattleianum* Afzel. ex Sabine leaves. *Blacpma* 2020, 19, 614-627.
- 415 [9] Vasconcelos, L.C., de Souza Santos, E., de Oliveira Bernardes, C., da Silva Ferreira,  
416 M.F., Ferreira, A., Tuler, A.C., Carvalho, J.A.M., Pinheiro, P.F. and Praça-Fontes, M.M.  
417 Phytochemical analysis and effect of the essential oil of *Psidium* L. species on the initial  
418 development and mitotic activity of plants. *Environ. Sci. Pollut. Res.* 2019, 26, 26216-  
419 26228.
- 420 [10] Scur, M.C., Pinto, F.G.S., Pandini, J.A., Costa, W.F., Leite, C.W. and Temponi, L.G.  
421 Antimicrobial and antioxidant activity of essential oil and different plant extracts of  
422 *Psidium cattleianum* Sabine. *Braz. J. Biol.* 2016, 76, 101-108.
- 423 [11] Castro, M.R., Victoria, F.N., Oliveira, D.H., Jacob, R.G., Savegnago, L. and Alves,  
424 D. Essential oil of *Psidium cattleianum* leaves: antioxidant and antifungal activity.  
425 *Pharm. Biol.* 2015, 53, 242-250.
- 426 [12] Marques, F.A., Wendler, E.R., Sales Maia, B.H.L.N., Coffani-Nunes, J.V.,  
427 Campana, J. and Guerrero, P.G. Volatile oil of *Psidium cattleianum* Sabine from the  
428 Brazilian atlantic forest. *J. Essent. Oil Res.* 2008, 20, 519-520.
- 429 [13] Chen, J., Lichwa, J. and Ray, C. Essential oils of selected Hawaiian plants and  
430 associated litters. *J. Essent. Oil Res.* 2007, 19, 276-278.
- 431 [14] Pino, J.A., Bello, A., Urquiola, A., Marbot, R. and Martí, M. Leaf oils of *Psidium*  
432 *parvifolium* Griseb. and *Psidium cattleianum* Sabine from Cuba. *J. Essent. Oil Res.* 2004,  
433 16, 370-371.

- 434 [15] Tucker, A.O., Maciarello, M.J. and Landrum, L.R. Volatile leaf oils of American  
435 Myrtaceae. III. *Psidium cattleianum* Sabine, *P. friedrichsthalianum* (Berg) Niedenzu, *P.*  
436 *guajava* L., *P. guineense* Sw., and *P. sartorianum* (Berg) Niedenzu. J. Essent. Oil Res.  
437 1995, 7, 187-190.
- 438 [16] Suksathan, R., Sookkhee, S., Anuntalabhochai, S. and Chansakaow, S. Chemical  
439 composition and antibacterial activity of rhizome oils from five *Hedychium* species. Nat.  
440 Prod. Commun. 2013, 8, 519-522.
- 441 [17] Sabulal, B., Varughese, G., Dan, M. and Pradeep, S. Chemical composition and  
442 antimicrobial activities of the essential oils from the rhizomes of four *Hedychium* Species  
443 from South India. J. Essent. Oil Res. 2007, 19, 93-97.
- 444 [18] Gurib-Fakim, A., Maudarbaccus, N., Leach, D., Doimo, L. and Wohlmuth, H.  
445 Essential oil composition of Zingiberaceae species from Mauritius. J. Essent. Oil Res.  
446 2002, 14, 271-273.
- 447 [19] Wang, Q., Liu, H., Zhang, M., Liu, S., Hao, Y. and Zhang, Y. MdMYC2 and  
448 MdERF3 positively co-regulate  $\alpha$ -farnesene biosynthesis in apple. Front. Plant Sci. 2020,  
449 11,
- 450 [20] Alimboyoguen, A.B., Castro-Cruz, K.D., Altena, I.v. and Ragasa, C. Triterpenes  
451 from *Pittosporum resiniferum* Hemsl. Int. J. Toxicol. Pharmacol. Res. 2016, 8, 261-262.
- 452 [21] Mendesil, E., Bruce, T.J.A., Woodcock, C.M., Caulfield, J.C., Seyoum, E. and  
453 Pickett, J.A. Semiochemicals used in host location by the coffee berry borer,  
454 *Hypothenemus hampei*. Journal of Chemical Ecology 2009, 35, 944-950.
- 455 [22] Arruda, M., Viana, H., Rainha, N., Neng, N.R., Rosa, J.S., Nogueira, J.M.F. and  
456 Barreto, M.d.C. Anti-acetylcholinesterase and antioxidant activity of essential oils from  
457 *Hedychium gardnerianum* Sheppard ex Ker-Gawl. Molecules 2012, 17, 3082-3092.
- 458 [23] T. K. T. Do, F. Hadji-Minaglou, S. Antoniotti and Fernandez, X. Essential oil  
459 authenticity. Trends Anal. Chem. 2015, 66, 146–157.
- 460 [24] Pierson, M., Fernandez, X. and Antoniotti, S. Type and magnitude of non-  
461 compliance and adulteration in neroli, mandarin and bergamot essential oils purchased  
462 on-line: potential consumer vulnerability. Sci. Rep. 2021, 11, 11096.

463