



**HAL**  
open science

## Limited historical admixture between European wildcats and domestic cats

Alexandra Jamieson, Alberto Carmagnini, Jo Howard-Mccombe, Sean Doherty, Alexandra Hirons, Evangelos Dimopoulos, Audrey T Lin, Richard Allen, Hugo Anderson-Whymark, Ross Barnett, et al.

### ► To cite this version:

Alexandra Jamieson, Alberto Carmagnini, Jo Howard-Mccombe, Sean Doherty, Alexandra Hirons, et al.. Limited historical admixture between European wildcats and domestic cats. *Current Biology - CB*, 2023, 33 (21), pp.4751-4760.e14. 10.1016/j.cub.2023.08.031 . hal-04293381

**HAL Id: hal-04293381**

**<https://hal.science/hal-04293381v1>**

Submitted on 18 Nov 2023

**HAL** is a multi-disciplinary open access archive for the deposit and dissemination of scientific research documents, whether they are published or not. The documents may come from teaching and research institutions in France or abroad, or from public or private research centers.

L'archive ouverte pluridisciplinaire **HAL**, est destinée au dépôt et à la diffusion de documents scientifiques de niveau recherche, publiés ou non, émanant des établissements d'enseignement et de recherche français ou étrangers, des laboratoires publics ou privés.



Distributed under a Creative Commons Attribution - NonCommercial 4.0 International License

# Limited historical admixture between domestic and European wildcats.

## Authors

Alexandra Jamieson<sup>1,2\*</sup>, Alberto Carmagnini<sup>2,3\*</sup>, Jo Howard-McCombe<sup>4</sup>, Sean Doherty<sup>5</sup>, Alexandra Hiron<sup>1</sup>, Evangelos Dimopolous<sup>6,1</sup>, Audrey T. Lin<sup>7</sup>, Richard Allen<sup>1</sup>, Hugo Anderson-Whymark<sup>8</sup>, Ross Barnett<sup>9</sup>, Colleen Batey<sup>10,11</sup>, Fiona Beglane<sup>12</sup>, Will Bowden<sup>13</sup>, John Bratten<sup>14</sup>, Bea De Cupere<sup>15</sup>, Ellie Drew<sup>16</sup>, Nicole M. Foley<sup>17</sup>, Tom Fowler<sup>5</sup>, Allison Fox<sup>18</sup>, Eva-Maria Geigl<sup>19</sup>, Anne Birgitte Gotfredsen<sup>20</sup>, Thierry Grange<sup>19</sup>, David Griffiths<sup>21</sup>, Daniel Groß<sup>22</sup>, Ashleigh Haruda<sup>1</sup>, Jesper Hjerminde<sup>23</sup>, Zoe Knapp<sup>24</sup>, Ophélie Lebrasseur<sup>25,1</sup>, Pablo Librado<sup>25</sup>, Leslie A. Lyons<sup>26</sup>, Ingrid Mainland<sup>27</sup>, Christine McDonnell<sup>16</sup>, Violeta Muñoz-Fuentes<sup>28</sup>, Carsten Nowak<sup>29</sup>, Terry O'Connor<sup>30</sup>, Joris Peters<sup>31,32</sup>, Isa-Rita M. Russo<sup>33</sup>, Hannah Ryan<sup>1</sup>, Alison Sheridan<sup>8</sup>, Mikkel-Holger S. Sinding<sup>34</sup>, Pontus Skoglund<sup>35</sup>, Pooja Swali<sup>35</sup>, Robert Symmons<sup>36</sup>, Gabor Thomas<sup>37</sup>, Theis Zetner Trolle Jensen<sup>38</sup>, Andrew C. Kitchener<sup>39</sup>, Helen Senn<sup>40</sup>, Daniel Lawson<sup>41</sup>, Carlos Driscoll<sup>42</sup>, William Murphy<sup>17</sup>, Mark Beaumont<sup>4</sup>, Claudio Ottoni<sup>43</sup>, Naomi Sykes<sup>5</sup>, Greger Larson<sup>1,#&</sup> Laurent Frantz<sup>2,3,#&</sup>

## Affiliations:

- 1 The Palaeogenomics & Bio-Archaeology Research Network, Research Laboratory for Archaeology and History of Art, The University of Oxford, Oxford, UK.
- 2 Palaeogenomics Group, Institute of Palaeoanatomy, Domestication Research and the History of Veterinary Medicine, LMU, Munich, Germany
- 3 School of Biological and Chemical Sciences, Queen Mary University of London, London, UK
- 4 School of Biological Sciences, University of Bristol, Bristol UK
- 5 Department of Archaeology, University of Exeter, Exeter, UK
- 6 Department of Veterinary Medicine, University of Cambridge, Cambridge, UK
- 7 Department of Anthropology, National Museum of Natural History, Smithsonian Institution, Washington, DC, USA
- 8 Department of Scottish History and Archaeology, National Museums Scotland, Edinburgh, UK
- 9 Center for Evolutionary Hologenomics, The GLOBE Institute, University of Copenhagen, 2100 Copenhagen, Denmark
- 10 Institute for Northern Studies, University of the Highlands and Islands, Kirkwall, UK
- 11 Department of Archaeology, University of Durham, Durham, UK
- 12 CERIS, School of Science, Atlantic Technological University, Sligo, Ireland
- 13 Department of Classics and Archaeology, University of Nottingham, Nottingham, UK
- 14 Department of Anthropology, University of West Florida, Florida, USA
- 15 Royal Belgian Institute of Natural Sciences, Brussels, Belgium
- 16 York Archaeological Trust, York, UK
- 17 Texas A&M University, Veterinary Integrative Biosciences, College Station, Texas, USA
- 18 Manx National Heritage, Manx Museum, Isle of Man
- 19 Université Paris-Cité, CNRS, Institut Jacques Monod, Paris, France
- 20 Section for GeoGenetics, Globe Institute, University of Copenhagen, Copenhagen, Denmark
- 21 Department for Continuing Education, University of Oxford, Oxford, UK
- 22 Museum Lolland-Falster, Nykøbing F., Denmark
- 23 Kultur & Udvikling, Viborg Museum, Viborg, Denmark
- 24 Department of Archaeology, University of Reading, Reading UK
- 25 Centre for Anthropobiology and Genomics of Toulouse, CNRS UMR 5288, Université de Toulouse, Université Paul Sabatier, 31000 Toulouse, France

26 Department of Veterinary Medicine & Surgery, College of Veterinary Medicine, University of Missouri, Columbia, Missouri 65201 USA  
27 UHI Archaeology Institute, University of the Highlands and Islands, Orkney, Scotland  
28 European Molecular Biology Laboratory, European Bioinformatics Institute (EMBL-EBI), Wellcome Genome Campus, Hinxton, Cambridge CB10 1SD, UK  
29 Centre for Wildlife Genetics & LOEWE Centre for Translational Biodiversity Genomics (TBG), Senckenberg Research Institute, Frankfurt, Germany  
30 BioArCh, Department of Archaeology, University of York, York, UK  
31 Germany and SNSB, State Collection of Palaeoanatomy Munich, Germany  
32 Institute of Palaeoanatomy, Domestication Research and the History of Veterinary Medicine, LMU Munich  
33 School of Biosciences, Cardiff University, Cardiff, UK  
34 Department of Biology, University of Copenhagen, Copenhagen, Denmark  
35 The Francis Crick Institute, London, UK  
36 Fishbourne Roman Palace, West Sussex, UK  
37 Department of Archaeology, University of Reading  
38 Section for Molecular Ecology and Evolution, GLOBE Institute, University of Copenhagen, Copenhagen, Denmark  
39 Department of Natural Sciences, National Museums Scotland, Edinburgh, UK and School of Geosciences, University of Edinburgh, Edinburgh, UK  
40 RZSS WildGenes Laboratory, Royal Zoological Society of Scotland, Edinburgh, UK  
41 School of Mathematics, University of Bristol, Bristol, UK  
42 Galton Corp., Frederick, MD, USA  
43 Centre of Molecular Anthropology for Ancient DNA Studies, Department of Biology, University of Rome Tor Vergata

\* These authors contributed equally to this work

# These authors co-supervised this work

& Correspondence to: [laurent.frantz@lmu.de](mailto:laurent.frantz@lmu.de); [greger.larson@arch.ox.ac.uk](mailto:greger.larson@arch.ox.ac.uk)

## Summary

Domestic cats were derived from the Near Eastern wildcat (*Felis lybica*), after which they dispersed with people into Europe. As they did so, it is possible that they interbred with the indigenous population of European wildcats (*Felis silvestris*). Gene flow between incoming domestic animals and closely related indigenous wild species has been previously demonstrated in other taxa including pigs, sheep, goats, bees, chickens and cattle. In the case of cats, a lack of nuclear, genome-wide data, particularly from Near Eastern wildcats, has made this possibility difficult to either detect or quantify. To address these issues, we generated 75 ancient mitochondrial genomes, 14 ancient nuclear genomes and 31 modern nuclear genomes from European and Near Eastern wildcats. Our results demonstrate that despite cohabitating for at least 2,000 years on the European mainland and in Britain, most modern domestic cats possessed less than 10% of their ancestry from European wildcats, and ancient European wildcats possessed little to no ancestry from domestic cats. The antiquity and strength of this reproductive isolation between introduced domestic cats and local wildcats was likely the result of behavioural and ecological differences. Intriguingly, this long-lasting reproductive isolation is currently being eroded in parts of the species' distribution as a result of anthropogenic activities.

## Introduction

Previous analyses of microsatellite markers indicated that modern domestic cats (*Felis catus*) derive most of their ancestry from Near Eastern wildcat (*Felis lybica*)<sup>1</sup>. Despite the fact that the remains of domestic cats, their wild progenitor (Near Eastern wildcats) and other wild relatives such as European wildcats (*Felis silvestris*) are difficult to distinguish zooarchaeologically<sup>2,3</sup>, the archeological record suggests that domestic cats dispersed into Europe and reached France and Britain by ~2800-2200 years before present [BP]<sup>3</sup>.

Mitochondrial and nuclear genetic approaches have been used to distinguish domestic cats from European, and Near Eastern wildcats<sup>1,4</sup>. These data have then been interpreted to address both domestic cat migration and the degree of introgression between European and Near Eastern wildcats at the boundary of their overlapping natural distributions in southeastern Europe<sup>4-7</sup>. In addition, numerous studies have demonstrated that European wildcat populations across Europe have experienced gene flow from domestic cats as a consequence of anthropogenic activities<sup>8-11</sup>.

This recent gene flow between introduced domestic cats and European wild cats is perhaps unsurprising for two reasons. Firstly, Near Eastern wildcats and domestic cats are morphologically even less divergent than many other pairs of wild and domestic populations (e.g.<sup>12,13</sup>) suggesting that there are no physical barriers to hybridisation. Secondly, previous studies have demonstrated that numerous domestic animal taxa including pigs<sup>14,15</sup>, sheep<sup>16</sup>, goats<sup>17,18</sup>, bees<sup>19</sup>, chickens<sup>20</sup> and cattle<sup>21,22</sup>, have all acquired a proportion of their genomic ancestry via gene flow with sympatric, closely related wild populations. The notable exception to this rule is domestic dogs who, despite their sympatry with wolves across the Northern Hemisphere, have received little to no gene flow for at least 11,000 years<sup>23-25</sup>.

Here, to ascertain the spatial and temporal pattern of hybridization between European wildcats and domestic cats following their arrival into Europe, we extracted DNA from 258 archaeological cat samples (8,500 - 100 years BP) excavated from 85 archaeological sites (Figure 1; Table S1; Supplemental Information). We then generated and analysed 75 mitochondrial genomes (>2x coverage) as well as 14 low- to medium-coverage nuclear genomes (0.1x - 4x) (Figure 1; Table S1). To better understand patterns of hybridization between cat species, we also generated 31 modern (Figure 1; Table S2) full nuclear genomes (>15x coverage) including 16 European and 4 Near Eastern wildcats.

## Results and Discussion

### *Ancient reticulation in the genus Felis*

To establish the genetic ancestry of modern and ancient domestic cat genomes, we first reconstructed the evolutionary relationships of *Felis* lineages using complete nuclear genomes with the jungle cat (*Felis chaus*) as an outgroup (Table S2; Figure 2a; Figure S2). Phylogenetic analyses showed the Near Eastern wildcat represents an outgroup to all other wildcats including the European, Asian (*Felis lybica ornata*), and the Chinese mountain cat (*Felis bieti*; Figure 2a). This indicates that Asian and Near Eastern wildcats do not form a monophyletic group, suggesting the current IUCN taxonomy<sup>26</sup>, which implies that *Felis lybica ornata* and *Felis lybica* are sister taxa, requires reconsideration. In addition, D-statistics analyses support at least two past admixture events: one involving Near Eastern and European wildcats, and another involving Near Eastern and Asian wildcats (Figure 2b).

Though these admixture signatures could result from modern instances of gene flow from domestic cats into wildcat individuals, we found the same, significant D-statistics signal ( $Z > |3|$ ) using the genome of a Mesolithic Scottish wildcat (8,459-8,272 cal. BP; AnCorran\_1; Table S1; Supplemental Information), that predates both the emergence of domestic cats and their arrival to Scotland. This result indicates that at least a portion of the admixture signal is due to ancient reticulation between wild lineages. Our phylogenomic analyses also further confirmed that domestic cats and Near Eastern wildcats are sister clade, corroborating previous studies using microsatellites and mtDNA data<sup>1</sup>.

### ***Resolving the origins of the Near Eastern ancestry present in European wild cats***

Though ADMIXTURE analyses (both K=4 and K=6; Supplemental Information) suggested that none of the European wildcats in this study possess Near Eastern wildcat/Domestic cat ancestry (Figure S3). Although our analysis did not include samples from known domestic cat wildcat Scottish hybrids, these results contradict previous analyses that show that modern Scottish wild cats possess some degree of domestic cat ancestry due to recent gene flow<sup>28</sup>. Recent work on human data has shown that ADMIXTURE may not be able to detect admixture events if all admixed individuals analysed possess similar ancestry proportions<sup>27</sup>. This would mean that ADMIXTURE may not be able to detect admixture if most European wildcats possessed similar levels of domestic cat ancestry. To address this issue, we analysed the genome from the Scottish Mesolithic wildcat (8,459-8,272 cal. BP; AnCorran\_1; Table S1; Supplemental Information). We computed D-statistics of the form D (outgroup, Near Eastern, European wildcat, AnCorran\_1), in order to take advantage of the fact that the AnCorran\_1 cat could not possess any domestic cat ancestry. We found that other than two individuals: Kilton\_2, a 16th century cat from Kilton Castle in Northeast England, and FSX360, a modern Portuguese wildcat, all D-statistics involve the other nine European wildcats analysed here yielded significantly negative Z values ( $Z < -3$ ), indicating that these individual possess a degree of Near Eastern/Domestic ancestry (Figure S4; Supplemental Information).

The Near Eastern wildcat ancestry fraction in European wildcats was computed using f4 ratios (Supplemental Information; Figure S6). We used AnCorran\_1, Kilton\_2, and FSX360 as representatives of non-admixed European wildcats. The Near Eastern ancestry fraction in European wildcats ranged from ~3.5% in an Eastern German wildcat, to ~21% in Scottish wildcats (Figure S8). Although, the high level of ancestry in Scottish wildcats is likely due to recent hybridization with domestic cats<sup>28</sup>, it remains unclear whether the same is true for German wildcats, which possess low levels of Near Eastern wildcat ancestry. It remains possible that European wildcat populations that live closer to the edge of their distribution in Southeast Europe naturally possess some degree of Near Eastern wildcat ancestry due to admixture, and that the ancestors of these populations may not have experienced any hybridization with introduced domestic cats. In fact, mitochondrial analyses have shown that haplogroup IV, which is typically associated with Near Eastern wildcats, have been found at high frequency in southern Europe in both ancient wildcats that pre-date cat domestication (n = 18, 58%, from the Mesolithic to the 8th c. BC) and modern wildcats (n = 10, 62%)<sup>11</sup>, suggesting the existence of an admixture zone.

### ***Low levels of European wildcat ancestry in modern and ancient domestic cats***

Principal component analysis (PCA) of nuclear genomes, including 14 ancient and 52 modern genomes, further demonstrated the affinity of both AnCorran\_1 and Kilton\_2 with modern European wildcats, particularly FSX360 (Figure 3a). This analysis also indicated that all 12 archaeological cats (excluding ancient wildcats) analysed here, most of which (10/12; Figure 1) originated in Europe, likely derived the majority of their ancestry from Near Eastern wildcats/domestic cats, rather than European wildcats. The earliest evidence of nuclear Near Eastern wildcat ancestry north of the Alps was found in a Roman domestic cat from the site of Fishbourne dated to 1,926-1,827 cal. BP (Fishbourne\_2), demonstrating that domestic cats with primarily Near Eastern wildcat nuclear ancestry were present north of the Alps by at least the Roman period.

Our PCA further indicated that some ancient cats, including a Roman cat from the Isle of Man (Perwick\_1) and a 17th century cat from Ireland (Eyre\_3), were slightly shifted toward European wildcats on the PCA. This positioning suggests a possible history of gene flow with European wildcats. To test this, we first used ADMIXTURE. At K=4, ADMIXTURE detected European wildcat ancestry in all but one of the ancient domestic cats (from the site of Dhzankent, Kazakhstan, 1,175–1,010 cal BP) 30, and in most (8/9) modern European and Middle Eastern samples (Figure S3). At K=6, ADMIXTURE only found detectable levels of

European wildcat ancestry in two ancient samples, an 18th century cat from Ireland (Eyre\_3), and a Roman cat from the Isle of Man (Perwick\_1; Figure S3).

We then computed D-statistics of the form D (outgroup, FSX360/AnCorran\_1/Kilton\_2, Near Eastern wildcat, Domestic cat). All tests involving modern and ancient domestic cats from Europe, Turkey and North America, including Denmark, England, Ireland, Italy, Portugal, Scotland and the USA yielded significant Z values ( $Z > 3$ ). This result shows that all European (ancient and modern), Turkish (ancient), and North American (modern) domestic cats analysed in this study possessed a degree of European wildcat ancestry (Figure S5).

The same D-statistics computed using modern cat data from the Middle East, including Iraq, Jordan, and Oman, as well as when using the genome of a Madagascan cat, were either non-significant, or borderline significant (Figure S5). This result suggests that these non-European cats possessed either fleetingly small or no European wildcat ancestry. In addition, a Central Asian ancient domestic cat from Kazakhstan and modern cats from China, South Korea and Thailand all yielded negative ( $|Z| > 3$ ), significant, D-statistics values (Figure S5). This result suggests that these cats may possess either or both Chinese and Asian wildcat ancestry (neither of which were represented in this test), corroborating a previous genomic study of wild and domestic Chinese cats<sup>29</sup>. This was confirmed through D-statistics analyses of the form D (outgroup, Chinese mountain cat, Near Eastern wildcat, Domestic cat) which showed that these individuals share significantly more alleles with Chinese mountain cat than expected under a model with no gene flow (Figure DBIEITI).

To improve our power to estimate the contribution of European wildcat ancestry in domestic cats, we computed ancestry proportions using f4 ratios (Figure S6; Supplemental Information). We used an explicit model (Figure S6), in which each domestic cat received its ancestry from European wildcats represented by AnCorran\_1, Kilton\_2, and FSX360 (all un-admixed wild individuals; Figure S4), and Near Eastern wildcats represented by two modern Israeli samples (FSI48 and FSI51) and a modern wildcat from the United Arab Emirates (FSI7). This analysis detected significant levels of European wildcat ancestry in eight ancient cats (Kongens\_3, Perwick\_1, Lyminge\_20, Lincoln\_1, Hungate\_2, Timberyard\_1, Eyre\_3, Snusgar\_7; Figure 3b), including the two detected by ADMIXTURE at K=6 (Figure S3). The proportion of European wildcat ancestry in cats from Ireland and Britain, identified by both f4 ratio and ADMIXTURE at K=6 (Eyre\_3, Perwick\_1) was 11-14%, while those only identified by f4 ratio had values less than 10%. Similar results were obtained using qpAdm (Figure S7)<sup>31</sup> and struct-f4 analyses (Figure S9; Supplemental Information)<sup>32</sup>

Overall, the proportion of European wildcat ancestry in ancient domestic cats ranged from 0 - 14% (+-2%) (Figure 3b). Slightly lower levels of European wildcat ancestry were also identified across modern domestic cats (between 0-11%; +-1%) (Figure 3b). This is consistent with the results of recent analyses that estimated the proportion of Chinese mountain cat ancestry in Chinese domestic cat genomes<sup>29</sup>, though the restricted distribution of the Chinese mountain cat significantly lowers opportunities for introgression into domestic cats. Overall, the relatively low proportion of wild ancestry found in domestic cats is much more similar to dogs, and substantially less than the reported percentages in pigs<sup>14,15</sup>, sheep<sup>16</sup>, goats<sup>17,18</sup>, bees<sup>19</sup>, chickens<sup>20</sup> and cattle<sup>21,22</sup>.

### ***Near Eastern mitochondrial haplogroups present in European wildcats***

These low levels of hybridization between wildcats and domestic cats raises the possibility that the Near Eastern wildcat ancestry identified in the European wildcats was not mediated by admixture with domestics. If true, this would undermine the use of mitochondrial data as a definitive proxy to determine the domestic status of ancient cats. Domestic cats, and Near Eastern and European wildcats belong to two mitochondrial haplogroups: I and IV<sup>1</sup>. Haplogroup I is found exclusively in European wildcats, while haplogroup IV is



found in all domestic and Near Eastern wildcats, as well as in multiple European wildcats. The presence of haplogroup IV in European wildcats has traditionally been interpreted as the result of hybridization with domestic cats<sup>1</sup>, though it is possible that these signatures were introduced into European wildcats through hybridization with Near Eastern wildcats living in the admixture zone at the edge of their distribution<sup>11</sup>.

We found that all four Near Eastern wildcats (labelled *Felis lybica* in [Figure S13](#); [Figure S14](#)) and all 22 modern domestic cats analysed here belonged to haplogroup IV ([Figure S13](#); [Figure S14](#)). However, haplogroup I was found in 10 out of the 16 modern European wildcats, while the other six possessed haplogroup IV (IV-A; see individual highlighted in [Figure S13-14](#)). Intriguingly, haplogroup IV was also found in the three Eastern German wildcats, two of which had low levels of Near Eastern wildcat ancestry (3-4%; *Felis silvestris\_ex9*, *Felis silvestris\_ex19*; [Figure S8](#)), and one possessed >10% Near Eastern wildcat ancestry (*Felis silvestris\_ex38*). This suggests that they did not acquire their mitochondrial genome through very recent admixture with domestic cats (i.e. ~3-5 generations ago). All modern European wildcats with haplogroup IV, however, aside from a single individual from Scotland, possessed sub-haplogroup IV-A, which was also most frequently identified in previous studies of domestic cats<sup>1</sup>. This sub-haplogroup was also the most common in both our total dataset (~74% of all domestic cats), and in specific geographical populations, including ancient cats from Britain and Ireland (28 of 43 cats dated between 339 BCE - 1,799 CE). This suggests that sub-haplogroup IV-A in wild cats could have been acquired through gene flow with domestic cats.

Altogether, while the presence of haplogroup IV-A in European wildcats is, at least to some degree, due to admixture with domestic cats, the low-level Near Eastern wildcat ancestry in the Eastern German cats raises the possibility that ancient, natural hybridization, in the admixture zone of southeastern Europe and Anatolia resulted in the spread of haplogroup IV into European wildcats. This suggests that mitochondrial data alone may not provide an adequate proxy to determine the domestic status of ancient cats, or to assess the timeframe of their dispersal into Europe.

## Conclusions

Our analyses indicate that domestic cats with Near Eastern nuclear ancestry were present in Britain by at least ~2,000 years ago (1,926 - 1,827 cal. BP; *Fishbourne\_2*), and that European wildcats and domestic cats have been coexisting in Northern Europe ever since. Despite this long-term co-existence, 30 of the 35 domestic cats analysed in this study possessed less than 10% of their ancestry from European wildcats, and 17 out of 35 possessed less than 5%. This proportion of wildcat ancestry in both ancient and modern domestic cats is substantially less than many other introduced domestic taxa, and more similar to dogs<sup>33</sup>. In addition, mitochondrial analyses of four cats from the English Medieval site of Kilton Castle ([Table S1](#)) revealed individuals with both sub-haplogroup IV-A (2/4), the most globally common haplogroup in modern domestic cats, and haplogroup I (2/4), which is only found in European wildcats, co-existed at the site. Nuclear analyses of one of the wildcats from Kilton Castle that possessed haplogroup I (*Kilton\_2*) revealed a lack of any domestic cat ancestry (Supplemental Information; [Figure S4](#)), indicating that introgression from domestic cats into European wildcats was limited in the past.

These results indicate that although domestic cats were not subjected to strong, conscious selection by people until the last century, they acquired biological adaptations, as the result of their association with people, that led to at least partial reproductive isolation from European wildcats. While domestic cats possess the ability to tolerate living in anthropogenic environments with much higher population density (Biró et al. 2004), they are also likely to be competitively excluded by larger, more aggressive, wildcats in other habitats with less abundant food. Combined with differences in male reproductive behaviour (i.e. male wildcats are only reproductively active in winter and spring while domestic cats are active all year), this ecological separation likely reduced both the opportunity for hybridisation, and the ability of hybrids to survive (Germain et al. 2008).

Despite this resistance to introgression, several studies have presented evidence for recent gene flow from domestic cats into indigenous European wildcat populations, including in France<sup>11</sup> and Scotland<sup>28</sup>. In Britain, this was likely triggered by a drastic reduction of the range of wildcats, which began prior to the 19th century<sup>34,35</sup> which intensified in the second half of the 20th century<sup>36</sup>. This indicates that habitat degradation and the encroaching human presence has led to the erosion of the reproductive isolation that had maintained the genomic integrity of domestic and European wildcats for at least two thousand years.



## Acknowledgements:

This research used the University of Oxford's Advanced Research Computing, Queen Mary's Apocrita, the Leibniz-Rechenzentrum High Performance Computing facility, and the Smithsonian High Performance Cluster (SI/HPC) (<https://doi.org/10.25572/SIHPC>). A.J. was supported by a Natural Environmental Research Council grant (NERC; NE/L002612/1) and a Deutscher Akademischer Austauschdienst grant (DAAD; 57552336). L.A.F. and G.L. were supported by European Research Council grants (ERC-2013-StG-337574-UNDEAD and ERC-2019-StG-853272-PALAEOFARM) and Natural Environmental Research Council grants (NE/K005243/1, NE/K003259/1, NE/S007067/1, and NE/S00078X/1). L.A.F. and A.C. were supported by the Wellcome Trust (210119/Z/18/Z). A.T.L. was supported by the George Burch Postdoctoral Fellowship. This project also received funding from the CNRS, and the University Paul Sabatier (AnimalFarm IRP). We would like to thank the Københavns Museum (KBM), Odense Bys Museer (OBM), Roskilde Museum (ROM), Viborg Museum (VSM), Svendborg Museum and the National Museum (NM) for permission to sample the cat bones kept at the National History Museum of Denmark (NHMD), University of Copenhagen. We would also like to thank Wim Van Neer, Angela Wallace, Antoine Giacometti, Billy Quinn, Brian O'Donnchadha, Geraldine Stout, Mandy Stephens, Matthew Stout, Stuart Halliday, Carleton Jones, David McCullough, Donal Fallon, Finola O'Carroll, Matthew Seaver, Richard Crumlish, Ruairi Ó Baoill, Valerie J. Keeley, for assistance with sample acquisition and Mike Brudford for co-supervision of J. H-C. We are also indebted to the following institutions for their support: The Sussex Archaeological Society, York Archaeological Trust, Natural History Museum of Scotland, Manx Museum, Arch-Tech Ltd, CRDS Ltd, IAC Ltd, Moore Group, National Monuments Service (Ireland), National Museum of Ireland, National Roads Authority (now Transport Infrastructure Ireland), Royal Irish Academy.

## Data Availability:

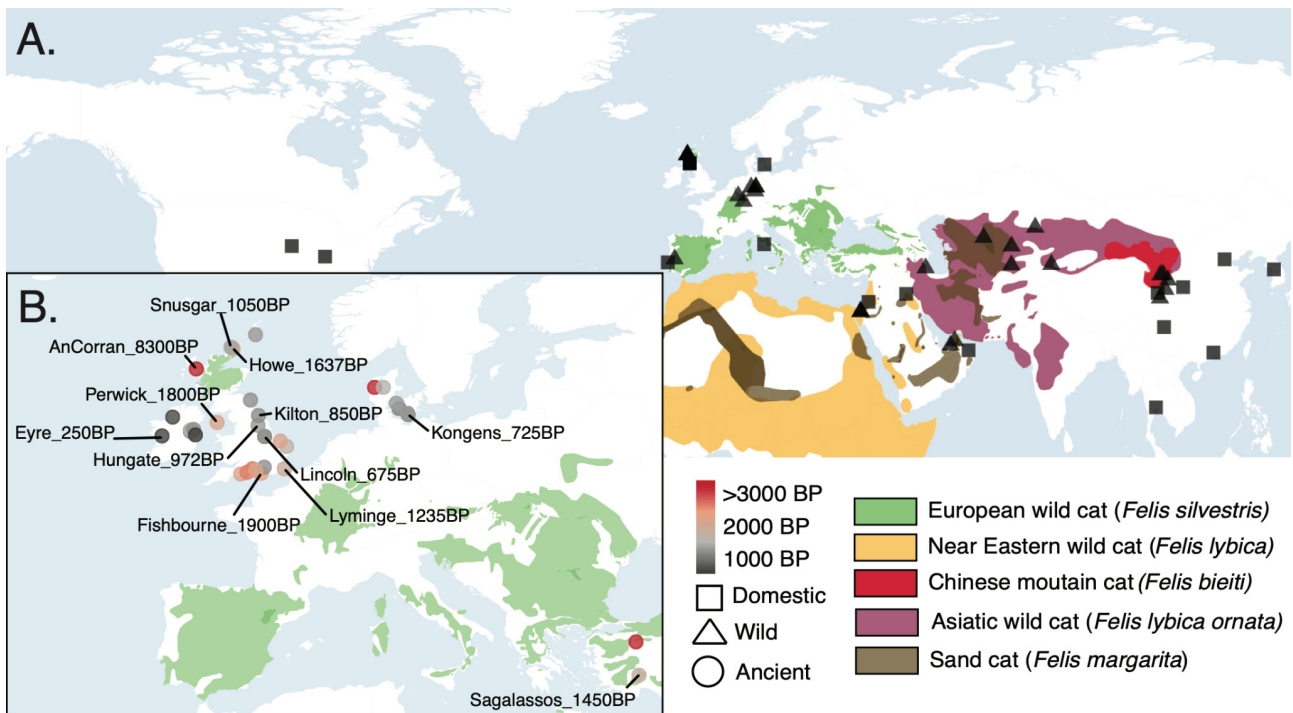
The raw FASTQ files for the DNA Sequencing data have been deposited on the European Nucleotide Archive (<https://www.ebi.ac.uk/ena/browser/home>) under project ID PRJEB57412.

## References

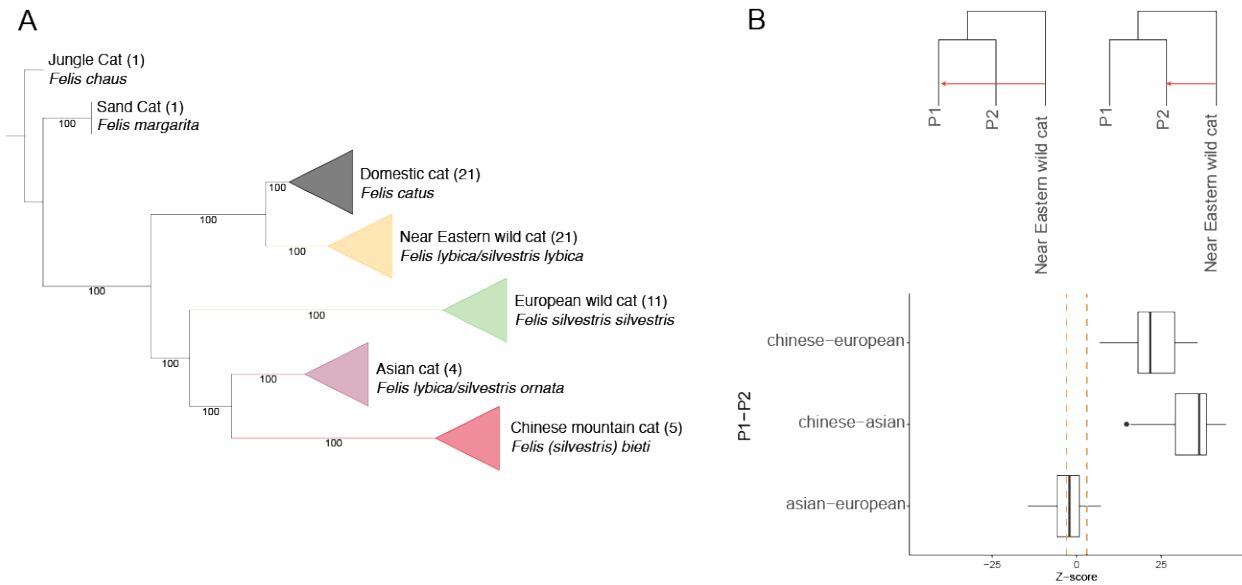
1. Driscoll, C.A., Menotti-Raymond, M., Roca, A.L., Hupe, K., Johnson, W.E., Geffen, E., Harley, E.H., Delibes, M., Pontier, D., Kitchener, A.C., et al. (2007). The Near Eastern origin of cat domestication. *Science* 317, 519–523.
2. Krajcarz, M., Krajcarz, M.T., Baca, M., Golubiński, M., Bielichová, Z., Bulatović, J., Csippán, P., Dimitrijević, V., Kyselý, R., Makowiecki, D., et al. The history of the domestic cat in Central Europe. *Antiquity*, 1–6.
3. Faure, E., and Kitchener, A.C. (2009). An Archaeological and Historical Review of the Relationships between Felids and People. *Anthrozoös* 22, 221–238.
4. Ottoni, C., Van Neer, W., De Cupere, B., Daligault, J., Guimaraes, S., Peters, J., Spassov, N., Prendergast, M.E., Boivin, N., Morales-Muñiz, A., et al. (2017). The palaeogenetics of cat dispersal in the ancient world. *Nature Ecology & Evolution* 1, 0139.
5. Robinson, R. (1977). *Genetics for cat breeders*. Pergamon Press. New York.
6. Ragni, B. (1993). Status and conservation of the wildcat in Italy. In *Seminar on the biology and conservation of the wildcat (Felis silvestris)*. Council of Europe Press, Strasbourg, pp. 40–41.
7. Randi, E., Pierpaoli, M., Beaumont, M., Ragni, B., and Sforzi, A. (2001). Genetic identification of wild and domestic cats (*Felis silvestris*) and their hybrids using Bayesian clustering methods. *Mol. Biol. Evol.* 18, 1679–1693.
8. Beugin, M.-P., Salvador, O., Leblanc, G., Queney, G., Natoli, E., and Pontier, D. (2020). Hybridization between *Felis silvestris silvestris* and *Felis silvestris catus* in two contrasted environments in France.

9. Pierpaoli, M., Birò, Z.S., Herrmann, M., Hupe, K., Fernandes, M., Ragni, B., Szemethy, L., and Randi, E. (2003). Genetic distinction of wildcat (*Felis silvestris*) populations in Europe, and hybridization with domestic cats in Hungary. *Mol. Ecol.* 12, 2585–2598.
10. Senn, H.V., Ghazali, M., Kaden, J., Barclay, D., Harrower, B., Campbell, R.D., Macdonald, D.W., and Kitchener, A.C. (2019). Distinguishing the victim from the threat: SNP-based methods reveal the extent of introgressive hybridization between wildcats and domestic cats in Scotland and inform future in situ and ex situ management options for species restoration. *Evol. Appl.* 12, 399–414.
11. Tiesmeyer, A., Ramos, L., Manuel Lucas, J., Steyer, K., Alves, P.C., Astaras, C., Brix, M., Cragolini, M., Domokos, C., Hegyeli, Z., et al. (2020). Range-wide patterns of human-mediated hybridisation in European wildcats. *Conserv. Genet.* 21, 247–260.
12. Van Neer, W., Linseele, V., Friedman, R., and De Cupere, B. (2014). More evidence for cat taming at the Predynastic elite cemetery of Hierakonpolis (Upper Egypt). *J. Archaeol. Sci.* 45, 103–111.
13. O'Connor, T.P. (2007). Wild or domestic? Biometric variation in the cat *Felis silvestris* Schreber. *International Journal of Osteoarchaeology* 17, 581–595.
14. Frantz, L.A.F., Haile, J., Lin, A.T., Scheu, A., Geörg, C., Benecke, N., Alexander, M., Linderholm, A., Mullin, V.E., Daly, K.G., et al. (2019). Ancient pigs reveal a near-complete genomic turnover following their introduction to Europe. *Proc. Natl. Acad. Sci. U. S. A.* 116, 17231–17238.
15. Frantz, L.A.F., Schraiber, J.G., Madsen, O., Megens, H.-J., Cagan, A., Bosse, M., Paudel, Y., Crooijmans, R.P.M.A., Larson, G., and Groenen, M.A.M. (2015). Evidence of long-term gene flow and selection during domestication from analyses of Eurasian wild and domestic pig genomes. *Nat. Genet.* 47, 1141–1148.
16. Cao, Y.-H., Xu, S.-S., Shen, M., Chen, Z.-H., Gao, L., Lv, F.-H., Xie, X.-L., Wang, X.-H., Yang, H., Liu, C.-B., et al. (2021). Historical Introgression from Wild Relatives Enhanced Climatic Adaptation and Resistance to Pneumonia in Sheep. *Mol. Biol. Evol.* 38, 838–855.
17. Daly, K.G., Mattiangeli, V., Hare, A.J., Davoudi, H., Fathi, H., Doost, S.B., Amiri, S., Khazaeli, R., Decruyenaere, D., Nokandeh, J., et al. (2021). Herded and hunted goat genomes from the dawn of domestication in the Zagros Mountains. *Proc. Natl. Acad. Sci. U. S. A.* 118. 10.1073/pnas.2100901118.
18. Daly, K.G., Maisano Delser, P., Mullin, V.E., Scheu, A., Mattiangeli, V., Teasdale, M.D., Hare, A.J., Burger, J., Verdugo, M.P., Collins, M.J., et al. (2018). Ancient goat genomes reveal mosaic domestication in the Fertile Crescent. *Science* 361, 85–88.
19. Wallberg, A., Han, F., Wellhagen, G., Dahle, B., Kawata, M., Haddad, N., Simões, Z.L.P., Allsopp, M.H., Kandemir, I., De la Rúa, P., et al. (2014). A worldwide survey of genome sequence variation provides insight into the evolutionary history of the honeybee *Apis mellifera*. *Nat. Genet.* 46, 1081–1088.
20. Wang, M.-S., Thakur, M., Peng, M.-S., Jiang, Y., Frantz, L.A.F., Li, M., Zhang, J.-J., Wang, S., Peters, J., Otecko, N.O., et al. (2020). 863 genomes reveal the origin and domestication of chicken. *Cell Res.* 30, 693–701.
21. Verdugo, M.P., Mullin, V.E., Scheu, A., Mattiangeli, V., Daly, K.G., Maisano Delser, P., Hare, A.J., Burger, J., Collins, M.J., Kehati, R., et al. (2019). Ancient cattle genomics, origins, and rapid turnover in the Fertile Crescent. *Science* 365, 173–176.
22. Park, S.D.E., Magee, D.A., McGettigan, P.A., Teasdale, M.D., Edwards, C.J., Lohan, A.J., Murphy, A., Braud, M., Donoghue, M.T., Liu, Y., et al. (2015). Genome sequencing of the extinct Eurasian wild aurochs, *Bos primigenius*, illuminates the phylogeography and evolution of cattle. *Genome Biol.* 16, 234.

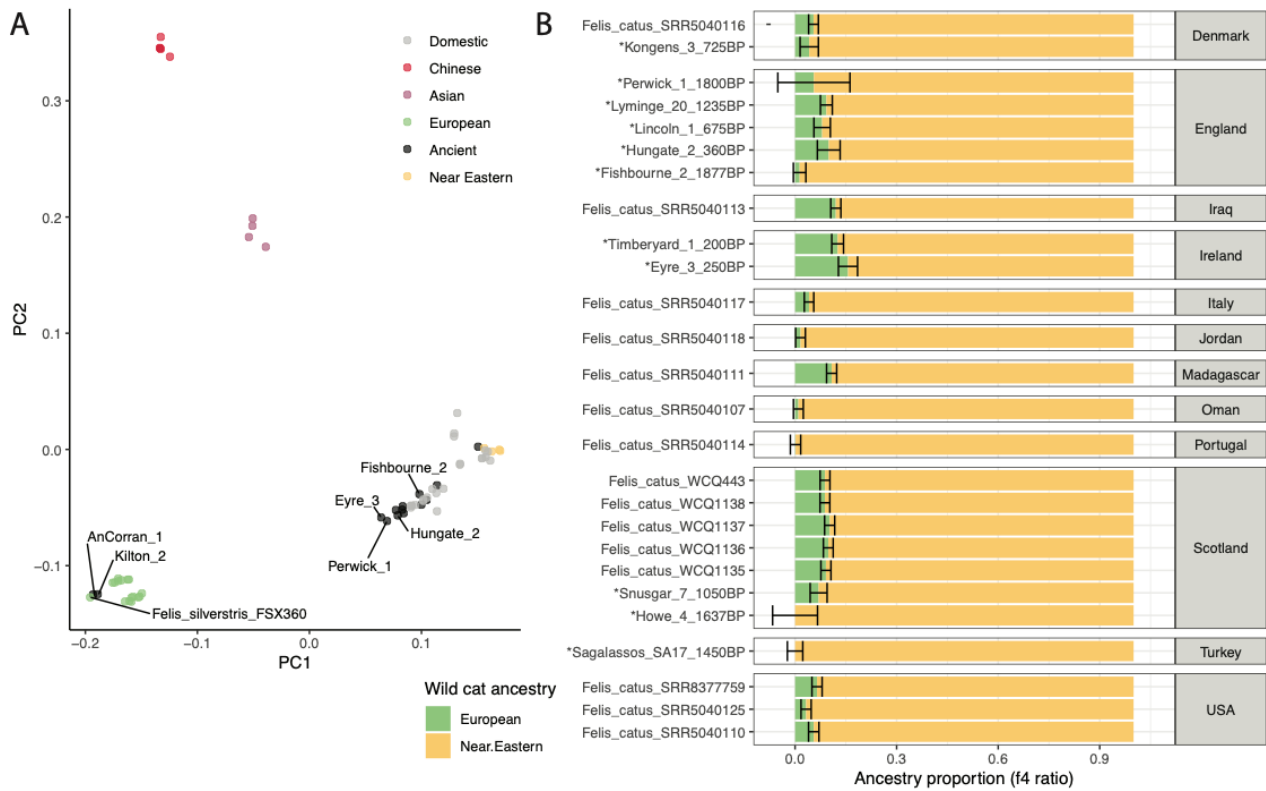
23. Ni Leathlobhair, M., Perri, A.R., Irving-Pease, E.K., Witt, K.E., Linderholm, A., Haile, J., Lebrasseur, O., Ameen, C., Blick, J., Boyko, A.R., et al. (2018). The evolutionary history of dogs in the Americas. *Science* 361, 81–85.
24. Bergström, A., Stanton, D.W.G., Taron, U.H., Frantz, L., Sinding, M.-H.S., Ersmark, E., Pfrengle, S., Cassatt-Johnstone, M., Lebrasseur, O., Girdland-Flink, L., et al. (2022). Grey wolf genomic history reveals a dual ancestry of dogs. *Nature* 607, 313–320.
25. Bergström, A., Frantz, L., Schmidt, R., Ersmark, E., Lebrasseur, O., Girdland-Flink, L., Lin, A.T., Storå, J., Sjögren, K.-G., Anthony, D., et al. (2020). Origins and genetic legacy of prehistoric dogs. *Science* 370, 557–564.
26. Kitchener, A.C., Breitenmoser-Würsten, C., and Eizirik, E. (2017). A revised taxonomy of the Felidae: The final report of the Cat Classification Task Force of the IUCN Cat Specialist Group. *Cat News*.
27. Lawson, D.J., van Dorp, L., and Falush, D. (2018). A tutorial on how not to over-interpret STRUCTURE and ADMIXTURE bar plots. *Nat. Commun.* 9, 3258.
28. Howard-McCombe, J., Ward, D., Kitchener, A.C., Lawson, D., Senn, H.V., and Beaumont, M. (2021). On the use of genome-wide data to model and date the time of anthropogenic hybridisation: An example from the Scottish wildcat. *Mol. Ecol.* 30, 3688–3702.
29. Yu, H., Xing, Y.-T., Meng, H., He, B., Li, W.-J., Qi, X.-Z., Zhao, J.-Y., Zhuang, Y., Xu, X., Yamaguchi, N., et al. (2021). Genomic evidence for the Chinese mountain cat as a wildcat conspecific (*Felis silvestris bieti*) and its introgression to domestic cats. *Sci Adv* 7. 10.1126/sciadv.abg0221.
30. Haruda, A.F., Ventresca Miller, A.R., Paijmans, J.L.A., Barlow, A., Tazhekeyev, A., Bilalov, S., Hesse, Y., Preick, M., King, T., Thomas, R., et al. (2020). The earliest domestic cat on the Silk Road. *Sci. Rep.* 10, 11241.
31. Patterson, N., Moorjani, P., Luo, Y., Mallick, S., Rohland, N., Zhan, Y., Genschoreck, T., Webster, T., and Reich, D. (2012). Ancient admixture in human history. *Genetics* 192, 1065–1093.
32. Librado, P., and Orlando, L. (2022). Struct-f4: a Rcpp package for ancestry profile and population structure inference from f4-statistics. *Bioinformatics* 38, 2070–2071.
33. Frantz, L.A.F., Bradley, D.G., Larson, G., and Orlando, L. (2020). Animal domestication in the era of ancient genomics. *Nat. Rev. Genet.* 21, 449–460.
34. Langley, P.J.W., and Yalden, D.W. (1977). The decline of the rarer carnivores in Great Britain during the nineteenth century. *Mamm. Rev.* 7, 95–116.
35. Lovegrove, R. (2008). *Silent Fields: The long decline of a nation's wildlife* First Paperback Edition. (Oxford University Press, USA).
36. Howard-McCombe J, Jamieson A, Carmagnini A, Russo I Whole genome sequencing dates the tipping point for genetic swamping of the critically endangered Scottish wildcat.
37. The IUCN Red List of Threatened Species <https://www.iucnredlist.org>.



**Figure 1. Location of cat samples sequenced in this study.** Maps representing the geographical range of the *Felis* species investigated in this study (except for *Felis chaus*, which was used as an outgroup). The data (shape files) for this plot were obtained from the IUCN Red List database<sup>37</sup>. **A.** Location of modern genomes analysed in this study **B.** Location and age of ancient cat samples for which DNA information (either mtDNA, nuclear or both) was obtained. The archeological sites from which samples possessing enough DNA to generate nuclear data are highlighted (time Before Present [BP]).



**Figure 2. Nuclear phylogeny and admixture between wildcat species.** **A.** Maximum likelihood tree built using genome-wide SNP data (Supplemental Information). Support values based on 100 bootstrap replicates are indicated near the nodes; values in brackets represent the number of samples in each collapsed clade. Species name reflects the two most used taxonomic nomenclatures by Driscoll et al. <sup>1</sup> and Kitchener et al. <sup>26</sup> **B.** Z-score obtained from D-statistics of the form  $D(\text{outgroup [Jungle cat]; Near Eastern wildcat; P1, P2})$ .



**Figure 3 Principal component and f4 ratio.** **A.** Principal component analysis (PCA) built using 67 genomes, including 14 ancient cat genomes (projected). **B.** Proportion of European wildcat ancestry in modern and ancient (denoted by an \*) domestic cat genome computed using an f4 ratio as described in Figure S6. Error bars represent standard errors computed across multiple f4 ratio using different European (AnnCorran\_1, Kilton\_2 and Felis\_silverstris\_FSX360) and Near Eastern (Felis\_lybica\_lybica\_FSI47, Felis\_lybica\_lybica\_FSI48, Felis\_lybica\_lybica\_FSI51, Felis\_lybica\_lybica\_FSI7) wildcats as sources.