



HAL
open science

**Pesticide upsurge, cross-contamination and biodiversity:
case studies from the Caribbean Coast
Human-Environment Observatory**

Vincent Hervé, Pierre Sabatier, Josie Lambourdière, Richard Raymond, Eric Foulquier, Iwan Le Berre, Pascal-Jean Lopez

► **To cite this version:**

Vincent Hervé, Pierre Sabatier, Josie Lambourdière, Richard Raymond, Eric Foulquier, et al.. Pesticide upsurge, cross-contamination and biodiversity: case studies from the Caribbean Coast Human-Environment Observatory. *Comptes Rendus. Géoscience*, 2024, 356 (S3), pp.1-22. 10.5802/cr-geos.236 . hal-04288861

HAL Id: hal-04288861

<https://hal.science/hal-04288861v1>

Submitted on 27 Nov 2023

HAL is a multi-disciplinary open access archive for the deposit and dissemination of scientific research documents, whether they are published or not. The documents may come from teaching and research institutions in France or abroad, or from public or private research centers.

L'archive ouverte pluridisciplinaire **HAL**, est destinée au dépôt et à la diffusion de documents scientifiques de niveau recherche, publiés ou non, émanant des établissements d'enseignement et de recherche français ou étrangers, des laboratoires publics ou privés.



Distributed under a Creative Commons Attribution 4.0 International License



INSTITUT DE FRANCE
Académie des sciences

Comptes Rendus

Géoscience

Sciences de la Planète

Vincent Hervé, Pierre Sabatier, Josie Lambourdière, Richard Raymond, Eric Foulquier, Iwan Le Berre and Pascal Jean Lopez

Pesticide upsurge, cross-contamination and biodiversity: case studies from the Caribbean Coast Human-Environment Observatory

Published online: 13 November 2023


<https://doi.org/10.5802/crgeos.236>

Part of Special Issue: Human Environment Observatory

Guest editors: Robert Chenorkian (Professeur Émérite Aix-Marseille Université, Conseiller Scientifique CNRS-INEE pour les OHM),

Corinne Pardo (CNRS FR3098 ECCOREV Aix-en-Provence (France), LabEx DRIIHM)

and François-Michel Le Tourneau (UMR 8586 – PRODIG, Campus Condorcet, Aubervilliers)

 This article is licensed under the
CREATIVE COMMONS ATTRIBUTION 4.0 INTERNATIONAL LICENSE.
<http://creativecommons.org/licenses/by/4.0/>



*Les Comptes Rendus. Géoscience — Sciences de la Planète sont membres du
Centre Mersenne pour l'édition scientifique ouverte*

www.centre-mersenne.org

e-ISSN : 1778-7025



Human Environment Observatory

Pesticide upsurge, cross-contamination and biodiversity: case studies from the Caribbean Coast Human-Environment Observatory

Vincent Hervé^{Ⓜ, a}, Pierre Sabatier^{Ⓜ, b}, Josie Lambourdière^c, Richard Raymond^{Ⓜ, d}, Eric Foulquier^{Ⓜ, e}, Iwan Le Berre^{Ⓜ, e} and Pascal Jean Lopez^{Ⓜ, *, c}

^a Université Paris-Saclay, INRAE, AgroParisTech, UMR SayFood, 91120 Palaiseau, France

^b EDYTEM, Université Savoie Mont Blanc, CNRS, UMR-5204, 73370 Le Bourget-Du-Lac, France

^c UMR BOREA, Muséum national d'histoire naturelle, CNRS-8067, Sorbonne Université, IRD, Université de Caen Normandie, Université des Antilles, Paris, France

^d UMR Éco-anthropologie, Muséum national d'Histoire naturelle, CNRS-7206, Université Paris-Cité, Paris, France

^e LETG, Université de Brest, CNRS, UMR 6554, F-29280 Plouzané, France

E-mails: vincent.herve@inrae.fr (V. Hervé), pierre.sabatier@univ-smb.fr (P. Sabatier), josie.lambourdiere@mnhn.fr (J. Lambourdière), richard.raymond@mnhn.fr (R. Raymond), eric.foulquier@univ-brest.fr (E. Foulquier), iwan.leberre@univ-brest.fr (I. Berre), pascal-jean.lopez@mnhn.fr (P. J. Lopez)

Abstract. Similar to many small islands within the Wider Caribbean Region, the French West Indies are rich but fragile island ecosystems threatened by global warming, pollutants and other anthropic pressures. To understand integrated and complex human impacts on the environment, the Caribbean Coast Human-Environment Observatory (OHM) is developing disciplinary and interdisciplinary studies related to the local-scale driving factors that affect the coastal evolution in Guadeloupe. We present here results that show the multiple causalities, causal asymmetries, and equifinality of environmental pollution related to chlordecone, glyphosate, arsenic and *Sargassum* and highlight the need to bring further knowledge and awareness to the local populations on these concerns.

Keywords. Biodiversity, Human-environment observatory, Interdisciplinarity, Coastal transition zone, *Sargassum*, Glyphosate, Chlordecone.

Funding. The authors would like to thank the Labex DRIIHM; the French program "Investissements d'Avenir" (ANR-11-LABX-0010), which is managed by the ANR.

Published online: 13 November 2023

* Corresponding author.

1. Introduction

The small island developing states (SIDS) and member island countries in the Caribbean Sea have been recognized to share similar sustainable development challenges, as they often have limited resources and fragile economies [Robinson, 2018, Thomas et al., 2020]. SIDS also correspond to hotspots of terrestrial and marine biodiversity with a number of endemic species that need protection [Maunder et al., 2008, Miloslavich et al., 2010, Bellard et al., 2014]. Unfortunately, the resilience of many fragile island ecosystems is threatened by global warming and its collateral effects, including sea level rise, coral bleaching, tropical cyclones, storm surges, and droughts, as well as invasive species and other forms of ecological interactions [Cohen et al., 2015, Benjamin and Thomas, 2019, Fernandez-Palacios et al., 2021, Mycoo et al., 2022]. The SIDS, like other places in the world, are also facing numerous anthropic pressures from overfishing, pollution from the shore, development operations, mass tourism, urban development, etc. [Wolf et al., 2022].

Among the nine French outermost regions, Guadeloupe and Martinique (French West Indies) are exposed to the abovementioned threats, especially marine submersion (i.e., cyclones and tsunamis), coastal erosion and sea-level rise [Paris et al., 2021]. They are also exposed to several sources of pollution, such as polycyclic aromatic hydrocarbons (PAHs) in mangroves [Munoz et al., 1997, Ramdine et al., 2012], heavy metals in seagrass beds [Bouchon et al., 2016] and pesticides in soils and rivers [Crabit et al., 2016, Comte et al., 2022]. Dumping of solid and consumptive wastes by inhabitants and users has also been documented, particularly in mangrove ecosystems [Dahomé Di Ruggiero, 2017]. Such improper solid waste deposition, associated with a lack of suitable waste treatment plants and inadequate pollutant storage areas, is one of the most severe threats to the sustainability of the natural resources of sensitive habitats and wildlife and of course to people. Despite these environmental concerns, these islands and archipelagos of the Caribbean are at the heart of important tourist flows, notably linked to cruises, because they offer all the amenities and facilities expected of a tropical destination. This tourist attraction is not devoid of environmental and social consequences [Miller and Auyong, 1991, Wilkin-

son, 2006, Scott et al., 2012, Wong, 2015, Adams, 2017, Mackay and Spencer, 2017, Wilkinson et al., 2017, Wolf et al., 2022]. Consequently, the development of ecotourism, as a form of more sustainable tourism with lesser local impacts, corresponds to great challenges that will require the development of management and educational schemes and a better integration of historical contexts [Wood, 2000, Dehoorne and Augier, 2011, Nicolas-Bragance and Saffache, 2016]. Probably, such development should not conceal a better regulation of the tourism flow and a reconsideration of the economic paradigm of tourism. In fact, even if the French islands present unique potential and assets, they have to adjust to their environmental context and to sociohistorical considerations if they want to respond adequately to both global and local challenges.

During the year 2016, the French National Center for Scientific Research (CNRS) had created one Human-Environment Observatories (OHM) which was named the OHM “Caribbean Coast”,¹ to investigate the consequences of coastal landscape and resource transformations (i.e., artificialization, accelerating urban-port dynamics, use conflicts...) on the Guadeloupean socio-ecosystem. Even if the OHMs are in line with frameworks that have been developed to address complex human-environmental processes [Binder et al., 2013, Bourgeron et al., 2018], they are unique in the sense that they have defined their own socio-environmental context along with a disruptive event that is a human-based fact [Chenorkian, 2020]. This disruptive event has its own ability to self-disperse into a plurality of positions, functions and implications. This concept of disruptive event is also considered as a benchmark or an interstice into which any OHM can dig through different approaches to study, at the local scale, socio-ecosystem trajectories (functions, communities, discourses, actors...). In the case of the OHM Caribbean Coast, the disruptive event corresponds to the modifications of urban-port dynamics in a perspective of sustainable development of the Guadeloupe archipelago. Through interdisciplinarity, integrative and multi-scalar approaches, the OHMs also aim to help stakeholders in environmental and

¹See the OHM “Littoral Caraïbe” at <https://ohm-littoral-caraïbe.in2p3.fr/>.

social action/management planning, and to increase awareness of the population. As an illustration of the wide range of approaches that are needed to properly address the complexity and the plurality of environmental concerns, we present here several studies performed by the OHM Caribbean Coast on cross-contamination issues of the coastal environment in Guadeloupe. We show here that the environmental impact of pesticides that have emerged over time, and which can be linked to changes in agricultural practices and policies, are also having impacts on the *Sargassum* crisis.

2. Phytopharmaceutical products: use, diffusion and resurgence

2.1. A brief review of historical contamination by chlordecone

In the French outermost regions, there are important ongoing concerns related to the ban on the use of the organochlorine molecule chlordecone. This molecule, which belongs to the same chemical family as dichlorodiphenyltrichloroethane (DDT), was discovered in 1951 and produced in the United States in the early 1950s under the trade name Kepone[®] to combat leaf-eating insects, ants, roaches, and fly larvae. From 1966 to 1975, the company Allied Chemical, with contractor Life Sciences Products Company (LSP), produced Kepone at a small plant in Hopewell, Virginia, along the James River [Goldfarb, 1978]. After a case report of employees suffering from shivering, studies demonstrated negative effects on human health [Cannon *et al.*, 1978, Epstein, 1978, Taylor, 1982, Reich and Spong, 1983]. Meanwhile, analyses showed that chlordecone was found throughout the James River, having spread downstream on suspended sediment and in fishes [Reich and Spong, 1983]. Chlordecone was shown to have negative effects on marine unicellular algae [Walsh *et al.*, 1977], estuarine animals [Schimmel and Wilson, 1977] and fishes [Couch *et al.*, 1977]. Even if there were debates on resistance forms, chlordecone and pentachlorophenol were also shown to inhibit the growth of estuarine bacteria [Orndorff and Colwell, 1980, Mahaffey *et al.*, 1982]. By the end of 1975, approximately half a year after the first employee case report, the production of Kepone was stopped in Hopewell, fishing was forbidden, and in 1977, all Kepone usage

was banned. Allied, LSP, the city of Hopewell and six individuals were charged by the Federal court and fined [Goldfarb, 1978]. This case serves as a model of prosecution for environmental pollution [Bacigal and Bacigal, 1987]. Starting from these dates, several monitoring programs have shown that chlordecone can still be detected in the majority of white perch and striped bass samples even thirty years after the source of contamination was removed [Luellen *et al.*, 2006]. Even partially, this information clearly reveals the large spectrum and long-term impacts of chlordecone, which was recognized as a persistent organic pollutant (POP) by the Stockholm Convention in 2009 [Madaj *et al.*, 2018].

However, in the French West Indies, chlordecone (CLD) was used in intensive cropping of bananas between 1972 and 1993, even though a number of studies performed in the late seventies warned against the putative consequences, including the contamination and impacts on human health [Snegaroff, 1977, Kermarrec, 1980]. Currently, we know that a large portion of the population in Guadeloupe and Martinique is contaminated with chlordecone. A reference study, named KANNARI,² which was performed from 2013–2014, revealed that a large proportion of the population, generally over 18 years old, has been contaminated by CLD, with differences depending on diet and place of residence. Persons living in contaminated zones consuming seafood or freshwater products from self-production of roots, tubers, poultry and eggs from contaminated zones presented a higher percentage above the internal chronic toxicological reference value (TRV) [Dereumeaux *et al.*, 2020]. In fact, CLD has been described to alter body-weight homeostasis [Costet *et al.*, 2022] and to be neurotoxic, an endocrine disruptor, reprotoxic and likely carcinogenic [Multigner *et al.*, 2010, 2016].

Contamination by CLD not only affects a large proportion of the human population but is also generalized to terrestrial, aquatic and likely atmospheric ecosystems. Similar to what has been shown in the USA, CLD has contaminated surface and ground

²This study is currently being extended to better evaluate the impregnation levels of the populations (<https://www.chlordecone-infos.fr/sites/default/files/documents/impregnation-chlordecone-kannari.pdf>).

water, and ineluctably through watershed hydrology, rain runoff and soil erosion [Bonan and Prime, 2001, Mottes *et al.*, 2016], the molecule has reached marine environments [Bertrand *et al.*, 2010]. However, a limited number of studies have specifically focused on the transport of CLD, especially between terrestrial and marine ecosystems [Woignier *et al.*, 2018, Dromard *et al.*, 2022]. Currently, various coastal marine ecosystems, including mangroves, seagrass meadows and coral reefs, are known to be contaminated. Even if details on bioaccumulation processes are scarce, various organisms from biofilms to top predators, including farmed animals, present moderate to high concentrations of CLD [Coat *et al.*, 2011, Dromard *et al.*, 2016, 2018a,b, Mendez-Fernandez *et al.*, 2018, Monti *et al.*, 2020, Dromard *et al.*, 2022, Hubas *et al.*, 2022]. Chlordecone can be detected in cetaceans living within the AGOA sanctuary [Mendez-Fernandez *et al.*, 2018]. Nevertheless, important debates still exist and further investigations have to address the actual stability of chlordecone in various terrestrial and aquatic environments [Saaidi *et al.*, 2023].

2.2. *Change in the use of pesticides*

Since the end of the 1990s and the ban of CLD, several alternative herbicides have been used for weed management. One of the cross-cutting phytosanitary practices involves the use of glyphosate, the active ingredient of broad spectrum post emergent, and nonselective systemic herbicides [Li *et al.*, 2016]. Glyphosate-based formulations have become the main herbicides used on a global scale [Cuhra *et al.*, 2016]. Studies have revealed that glyphosate from both urban and agricultural uses occurs in soil, surface water, and groundwater, and residues such as aminomethylphosphonic acid (AMPA) are found at all levels of the food chain, such as in drinking water, plants, animals, and even humans [Aparicio *et al.*, 2013, Maggi *et al.*, 2020, Rivas-Garcia *et al.*, 2022]. However, the recognition of pharmaceutical substances as being toxic, especially to the environment and humans, and the associated regulations on usage and accessibility in markets usually involve long processes that can vary depending on the state.

To control the use of glyphosate and glyphosate-based herbicides (GBHs), under the European initiative, the French government launched a program in 2008 that has since been revised twice. The program,

named the Ecophyto plan, aims to reduce the uses, risks, and impacts of plant protection products. According to accessible data from the General Commission for Sustainable Development (GCSD), the glyphosate was over the 2009–2017 period, the country's top-selling herbicide among the 119 herbicide active substances. For the French overseas territories, the NGO Générations Futures also reported the important use of glyphosate.³ Nevertheless, like other governments in the European Union, the French government has been committed to eliminate glyphosate use in cases for which alternatives already exist.

To our knowledge, only a few investigations on the presence of glyphosate and derivative products have been performed in the French West Indies. One report revealed that glyphosate is used year-round in all cropping systems in Martinique [Deffontaines *et al.*, 2017]. The same authors also showed intensified detection during the wet season in the upstream part of the watershed, suggesting a seasonal intensification of treatments to compensate for increased grass pressure. In this particular study, it was shown that the metolachlor herbicide or probably its metabolites, was present in 50% of the samples, glyphosate was present in more than 20%, and AMPA—the main degradation product of glyphosate—was present in more than 90% of the samples [Deffontaines *et al.*, 2017]. In addition, warnings on the use of the present pesticide applications and potential pollution of watershed outlets have been raised, especially in the case of their use in horticulture [Mottes *et al.*, 2017].

2.3. *Impact of agricultural uses within the coastal transition zone*

Recently, the OHM Caribbean Coast co-funded two paleoecology projects on the consequences of agricultural uses of herbicides and pesticides. The projects examined core sediments in the transition zone from coastal areas with strict fishing prohibitions from Guadeloupe and Martinique. Although the two corresponding watersheds studied were different in terms of total cultivated area,

³<https://www.generations-futures.fr/cartes/carte-ventes-de-glyphosate-ha-de-sau-departement-2017/>.

other important characteristics were similar: soil cover, types of cultures, and climate. Using core sediment analyses, a drastic increase in soil erosion was demonstrated from the turn of the 21st century (Figure 2A), which corresponded to the beginning of the usage of glyphosate in banana fields [Sabatier *et al.*, 2021]. Further analyses of the core sample fluxes helped define two periods: one period from 1950 to early 2000 characterized by a slow sedimentation rate (SSR) and a period from 2001 to 2017 characterized by a fast sedimentation rate (FSR). The two periods were also characterized by differences in fluxes of glyphosate and chlordecone, with virtually no glyphosate and low to moderate CLD flux found in marine sediments over the SSR period and increasing amounts of these pesticides found over the FSR period (Figure 2B–C).

These data allowed us to conclude that within the OHM studied areas and also in Martinique, the application of glyphosate, which is known to disrupted grass development, had a strong effect on soil erosion [Mickelson *et al.*, 2001]. We showed that the use of glyphosate has induced an increase in CLD and its degradation products in coastal and marine areas [Sabatier *et al.*, 2021]. Such an upsurge of pesticides trapped in soils some time ago by an actual application of glyphosate was also demonstrated for DDT in French vineyards [Sabatier *et al.*, 2014]. These important results clearly demonstrate that it is crucial to further study the consequences of herbicide use regarding the mechanisms of remnant pesticide (*i.e.*, CLD) mobility in various terrestrial and aquatic environments of the French West Indies [Mottes *et al.*, 2021]. Further erosion and ecotoxicological risk assessments should also be conducted, and management practices should be adjusted to the local context. We believe that the presented data reinforce the need to develop nature-based solutions coupled with sustainable agriculture using fewer pesticides, particularly in insular territories that present limited agricultural lands that are often in close vicinity to residential areas [Deffontaines *et al.*, 2020].

2.4. Impact of agricultural uses on biodiversity

The memory effect of agricultural uses can be investigated using sedimentary ancient DNA (sedaDNA), even if the processes that govern the production, transfer, incorporation, and preservation of

sedaDNAs remain only partially understood. Indeed, DNA preservation depends on multiple abiotic and biotic processes [Dell'anno *et al.*, 2002, Boere *et al.*, 2011, Torti *et al.*, 2015, Capo *et al.*, 2016, Giguët-Covex *et al.*, 2019, Capo *et al.*, 2021]. As a complement to the abovementioned results on the impacts of glyphosate on the coastal transition zone in Guadeloupe, we explored sedaDNAs to evaluate the temporal impacts on biodiversity.

The sedaDNAs of the core samples were extracted, and then a DNA library was prepared by amplifying the V7 region of the 18S rRNA gene, a universal eukaryotic marker. After sequencing the barcodes and filtering processes, we obtained 41,081 eukaryotic operational taxonomic units (OTUs; cutoff 95%) that were taxonomically assigned [Hervé *et al.*, 2023]. Regarding the *alpha* diversity (*i.e.*, the species diversity in a site at a local scale), we found that both OTU richness and diversity (the Shannon index and inverse of the Simpson index) were significantly higher in the FSR samples than in the SSR samples. Looking at the *beta* diversity (*i.e.*, the extent of change in community composition or degree of community dissimilarity between samples), nonmetric multidimensional scaling (NMDS) analyses revealed that the FSR and SSR eukaryotic communities were different (Figure 2D) and that this difference was also significant [Hervé *et al.*, 2023]. Additionally, we found significant associations between the ordination axis scores and both the terrigenous and pesticide fluxes (Figure 2D).

We investigated in more detail variations in specific eukaryotic clades, with a focus on three eukaryotic groups among the coastal biomes that presented significant temporal patterns of variation and played different ecological roles. As representative members of the organic matter decomposer community, we chose Ascomycota (Opisthokonta, Fungi). Bacillariophyta (commonly known as diatoms) and Chlorophyceae (Archaeplastida) were selected as members of the carbon-fixing organisms. For these three groups of organisms, we found no significant variation in their temporal relative abundance or diversity indices during the SSR period [Hervé *et al.*, 2023]. However, during the FSR period, we found a significant decrease in Ascomycota abundance and a significant increase in relative abundance for both Bacillariophyta and Chlorophyceae relative abundance (Figure 3). Altogether, our data demonstrate that changes in land uses alter the rates and

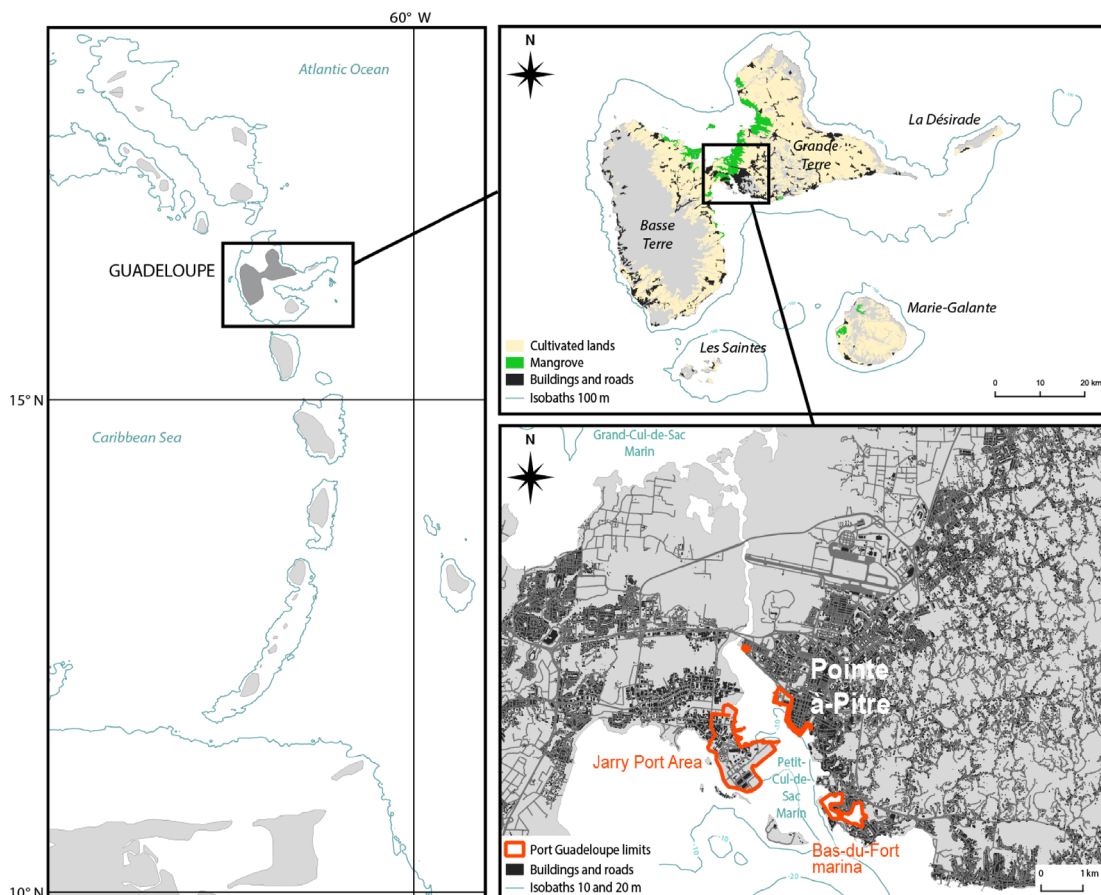


Figure 1. Maps of Guadeloupe. (Left) Location of Guadeloupe in the Lesser Antilles. (Top right) The Guadeloupe Archipelago. (Bottom right) Enlargement of Petit Cul-de-Sac Marin revealing the highly densified area and location of Guadeloupe Port Caraïbes. (BD Carto IGN, 2019; BD Topo IGN, 2019; GEBCO, 2020; TM World Borders, 2021.)

patterns of sediment transport associated with increases in the flux of pesticides, which in turn modify biodiversity in the coastal transition zone, at least in one location of the Petit Cul-de-Sac Marin, Guadeloupe, French West Indies (Figure 1) is also experiencing important anthropogenic forcing (i.e., increases in marine traffic, coastal urbanization, etc.).

For many kinds of aquatic organisms [Tresnakova et al., 2021], it is known that exposure to glyphosate can alter the diversity and abundance of fungal [Druille et al., 2013, Van Bruggen et al., 2021, Vazquez et al., 2021] or diatom communities [Debenest et al., 2010, Vera et al., 2010, Larras et al., 2013, Corrales et al., 2021]. Interestingly, it was also shown that glyphosate can differentially affect the growth of marine diatom species, with some species being ca-

pable of using glyphosate as the sole phosphorous source [Wang et al., 2016]. Moreover, the impacts of glyphosate and its uptake and degradation processes by both prokaryotic and eukaryotic photosynthetic organisms are known to depend on physicochemical conditions and nutrient concentrations [Drzyzga and Lipok, 2018, Lozano et al., 2018, Mesquita et al., 2021, Wang et al., 2022, Zabaloy et al., 2022]. Combined with our results, the latest information suggests that glyphosate and chlordecone can affect the composition and structure of coastal marine microorganism communities. Since photosynthetic organisms are directly involved in primary productivity and microbial decomposers in carbon and nutrient cycling, any alteration in their composition could potentially have long-term consequences on ecosystem

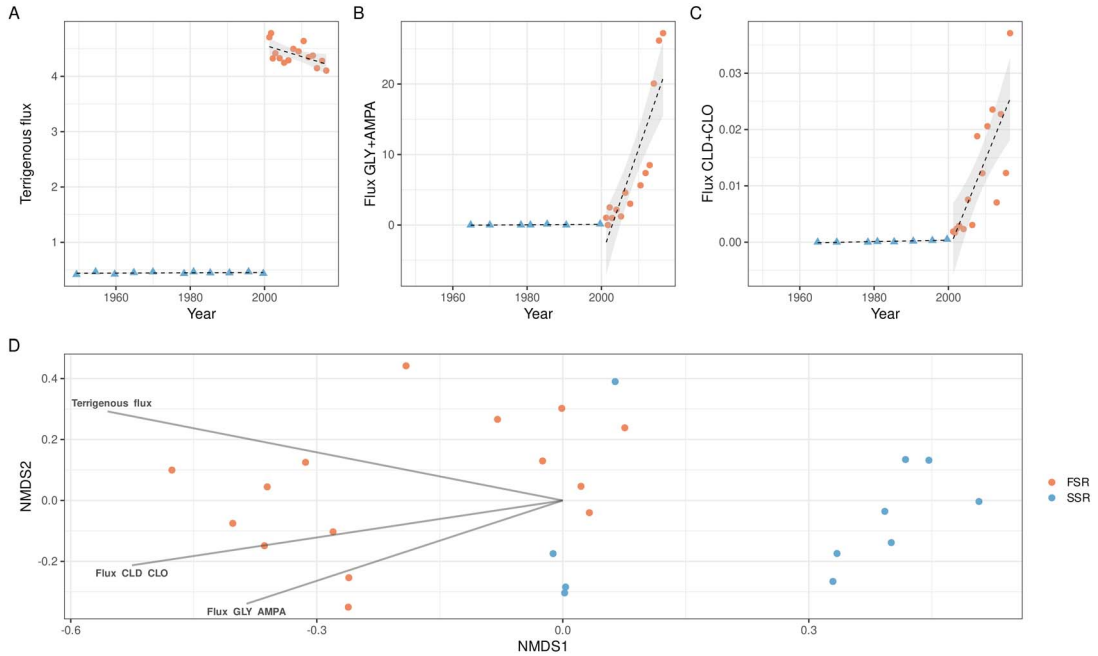


Figure 2. Changes in sedimentological data, pesticide flux and eukaryotic community composition in a core archive from a marine transition zone of Guadeloupe. (A) Terrigenous flux, (B) glyphosate (GLY) + aminomethyl-phosphonic acid (AMPA, a glyphosate primary degradation product) flux (in $\text{mol}\cdot\text{cm}^{-1}\cdot\text{yr}^{-1}$), and (C) chlordecone (CLD) + chlordecol (CLO, a chlordecone transformation product) flux (in $\text{mol}\cdot\text{cm}^{-1}\cdot\text{yr}^{-1}$). (D) Nonmetric multidimensional scaling (NMDS) ordination of the eukaryotic community composition based on Bray–Curtis distances. Arrows indicate significant correlations ($p < 0.05$) with environmental variables.

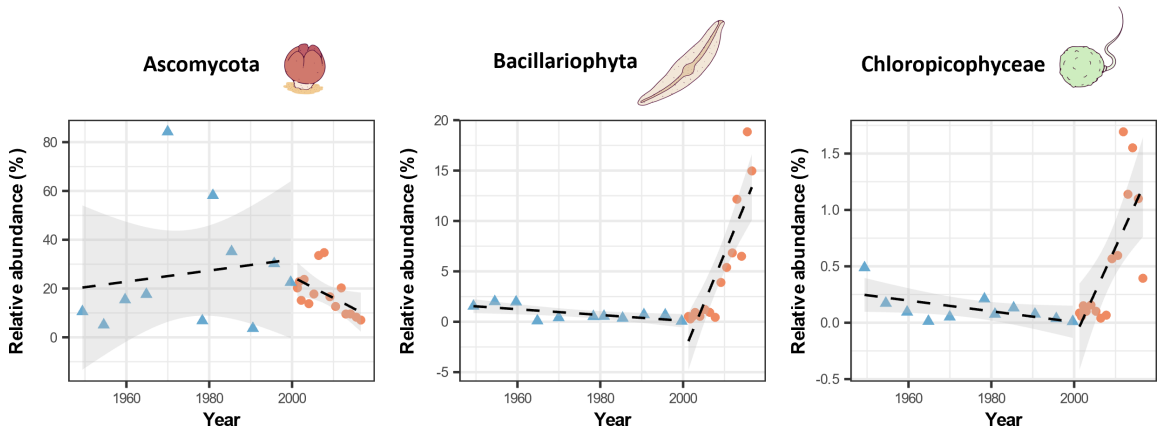


Figure 3. Temporal evolution of the relative abundance of some important eukaryotic clades over the SSR and FSR periods.

functioning and stability as a result of changes in both green and brown food webs [Zou *et al.*, 2016, Mougi, 2020].

Interestingly, analyses of the diversity present in the core sample also revealed the presence of OTUs assigned to the brown algae *Sargassum*. Even if

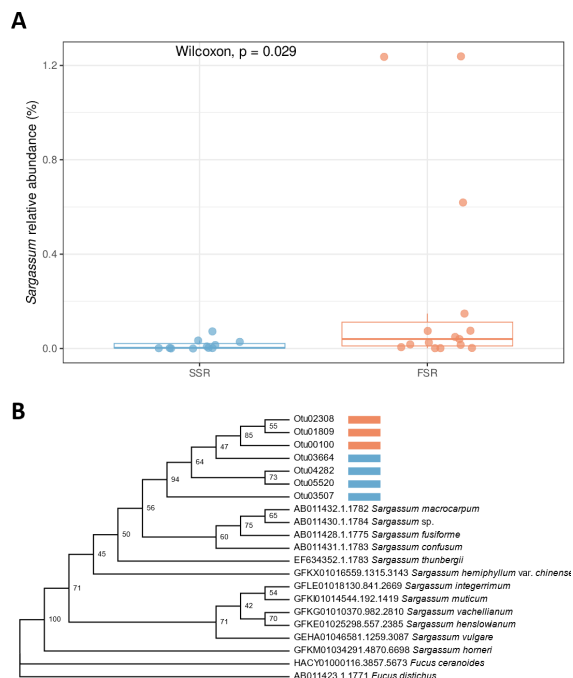


Figure 4. Abundance and diversity of *Sargassum*-related OTUs in sediment samples from the coastal transition zone in Guadeloupe. (A) Significant difference in the relative abundance of *Sargassum* between the SSR and FSR periods. (B) Maximum-likelihood tree showing the relationships between the *Sargassum*-related OTUs recovered from the Guadeloupe sediment (FSR period in orange and SSR period in blue) and other publicly available reference sequences of *Sargassum* species. This phylogenetic tree was inferred with IQ-TREE version 2.2.0 [Minh *et al.*, 2020]. Evaluation of branch supports was computed using SH-aLRT (1000 replicates). *Fucus* species were used as outgroups.

precise taxonomic assignment was rather difficult for these seaweeds because of the short length of the 18S rRNA gene amplified here and probably also because this genetic marker cannot resolve differences at the species level, we found a tendency toward an increase in their relative abundance over the most recent years. Over the period from 2012 to 2017, which corresponds to the appearance of stranding, the relative abundance of *Sargassum* OTUs tended to in-

crease (Figure 4A). In fact, this relative abundance was significantly higher during the FSR than during the SSR period (Figure 4A). Additionally, among these OTUs, we detected 7 abundant OTUs that were specific either to the SSR period or the FSR period (Figure 4B). Further studies will be necessary to show whether it is possible to analyze the temporal evolution of *Sargassum* stranding based on sedaDNAs. However, such analyses will have to consider the potential contribution of the increase in the colonization of numerous coral reefs by algae, among which *Sargassum* can be an important actor [Thabard *et al.*, 2011, Löffler and Hoey, 2018]. Finally, there is also great interest in defining an appropriate molecular marker to resolve the *Sargassum* phylogeny, especially for the three pelagic *Sargassum* morphospecies, *Sargassum fluitans* III, *S. natans* I and *S. natans* VIII [Parr, 1939, Schell *et al.*, 2015, Amaral-Zettler *et al.*, 2017, Martin *et al.*, 2021], that are spreading in the Caribbean region.

3. The golden-brown crisis and emerging concerns

Since 2011, the Caribbean and West Africa coastlines have been subject to massive and episodic influxes of floating *Sargassum* seaweed [Wang *et al.*, 2019]. The large amounts of seaweed biomass washed up along the coastlines have direct and indirect consequences for beaches [Williams and Feagin, 2010, Innocenti *et al.*, 2018, Rutten *et al.*, 2021] and for the functioning and resilience of nearshore ecosystems [Van Tussenbroek *et al.*, 2017, Cabanillas-Teran *et al.*, 2019, Rodriguez-Martinez *et al.*, 2019]. The mass stranding of these brown algae (Figure 5) also has significant negative impacts on livelihoods, public health, tourism, fisheries and the coastal economy [Resiere *et al.*, 2018, Schuhmann *et al.*, 2022].

Members of the OHM Caribbean Coast associated with other colleagues from the University of Antilles were involved in an interdisciplinary project co-funded by the French agency for ecological transition (ADEME in French) (see the complete report),⁴ and

⁴Eco3Sar: Ecologie, Ecotoxicologie et Economie des Sargasses. <https://bibliothec.ademe.fr/recherche-et-innovation/4039-eco3sar-ecologie-ecotoxicologie-et-economie-des-sargasses.html>.



Figure 5. Photographs of *Sargassum* along the coasts or at storage sites in Guadeloupe and Martinique. (A) Baie du Marigot (Les Saintes, Guadeloupe), (B) *Sargassum* spp., (C) Le Diamant (Martinique), (D) Le Marigot (Martinique), (E) Saint Félix (Guadeloupe), (F) Capesterre (Marie-Galante, Guadeloupe), (G) storage site of Pointe Faula (Martinique), and (H) storage site Capesterre, (Marie-Galante, Guadeloupe).

dedicated to chemical and biological contamination issues related to *Sargassum* and to degrees of acceptability of their use in organic amendments. The aims were (i) to determine levels of contamination by heavy metals and CLD in *Sargassum* seaweeds, (ii) describe the eukaryotic and prokaryotic biodiversity associated with *Sargassum* spp., (iii) test the potential use of these algae in organic amendments, and (iv) reveal collective representations of social ac-

tors and of the population through diachronic and prospective approaches. Hereafter, we focus on contamination and biodiversity-related issues.

3.1. Heavy metals in *Sargassum*

The accumulation of heavy metals by *Sargassum* spp. has created concerns that the inland storage and disposal of these seaweeds might also impair high

Table 1. Metal's composition in *Sargassum* spp. collected in 2018 from Guadeloupe and Martinique

Localization	<i>n</i> ^a	Cd	Cr	Co	Cu	Hg	Ni	Zn ^b	Pb	As	
Coastal	Shore zone	97	0.47 ± 0.19	11.6 ± 23.7	1.13 ± 1.44	4.20 ± 7.31	<LOD	3.91 ± 1.11	7.66 ± 7.45	0.51 ± 0.71	71.9 ± 28.4
	Offshore	3	0.43 ± 0.05	4.04 ± 0.84	0.44 ± 0.07	3.73 ± 0.31	<LOD	4.91 ± 0.16	2.20 ± 0.40	0.13 ± 0.02	100.5 ± 4.9
Inland	Storage sites	9	0.28 ± 0.07	11.5 ± 1.2	0.98 ± 0.12	5.24 ± 1.58	<LOD	2.54 ± 1.58	6.31 ± 1.77	1.11 ± 0.43	25.6 ± 15.9

The concentrations correspond to mg of metal per kg of dried *Sargassum*. Values are mean ± standard deviations.

^a Number of samples analyzed.

^b The results of the coastal shore zone for the Zinc correspond to 96 and not 97 samples since one of them was below the limit of detection (LOD).

Table 2. Arsenic concentration in *Sargassum* spp. collected in 2019 from Guadeloupe and Martinique

Localization	<i>n</i> ^a	As total	As(III)	As(V)	MMA	DMA	AsBet	AsC	
Marine water	59	96.1 ± 24.8	1.00 ± 2.87	65.2 ± 23.6	16.0 ± 12.8	5.56 ± 7.16	4.59 ± 3.63	0.47 ± 0.73	
Shore	Wet	31	96.8 ± 23.5	1.99 ± 6.29	64.7 ± 23.3	13.9 ± 12.3	6.75 ± 8.39	4.13 ± 3.17	0.61 ± 0.97
	Dry	28	54.4 ± 26.8	0.39 ± 0.46	34.3 ± 22.5	7.6 ± 10.2	5.72 ± 5.62	2.54 ± 2.20	0.70 ± 1.10

The concentrations correspond to mg of metal per kg of dried *Sargassum*. Values are mean ± standard deviations.

^a Number of samples analyzed.

The forms of arsenic are: arsenite (As(III)), arsenate (As(V)), monomethylarsonate (MMA), dimethylarsinate (DMA), arsenobetaine (AsBet), and arsenochlorine (AsC).

value subsidiaries such as agribusiness opportunities (i.e., fertilizer in crop production or food supplements for livestock production).⁵ Our project was carried out in both Guadeloupe and Martinique with sampling campaigns during 2018 and 2019, which correspond to periods with high levels of *Sargassum* stranding [Wang *et al.*, 2019]. In 2018, we collected approximately 100 samples corresponding to *Sargassum* spp. from shore zones in Guadeloupe and Martinique, offshore sites and storage sites in Martinique (Figure 6A). Among the heavy metals and metalloids tested, we found that even if arsenic is only present at very low concentration in marine waters, it is bioaccumulated by *Sargassum* with average value of 78 mg/kg dry wet (Table 1). In fact, bioaccumulation of arsenic by pelagic *Sargassum* has also been demonstrated in other Caribbean regions and territories [Florez *et al.*, 2017, Rodriguez-Martinez *et al.*, 2020, Cipolloni *et al.*, 2022, Devault *et al.*, 2022, Ortega-Flores *et al.*, 2022] and for various *Sargassum* species [Devault *et al.*, 2021].

To obtain further information on the putative effects of landing and drying processes, we performed analyses of arsenic species (i.e., inorganic and methylated forms) in *Sargassum* spp. but after the separation of seaweeds by location, with seaweeds from the shore, recently landed and dried (i.e., with a brownish color). We found a significant decrease in total arsenic concentration upon drying (Table 2). The decrease in total arsenic concentration was also significant for As(V) and MMA (Table 2). Even if we do not know the precise mechanisms underlying the decrease in *Sargassum*-associated arsenic concentration (i.e., direct or indirect leaching by rainfall or due to seaweed drying, etc.), our results warn us against the potential release of high concentrations of harmful arsenic species. Leaching and transformation into various compounds that might depend on complex physical, chemical, and biological processes can probably occur along the usage chain. These data reveal the need to further investigate the consequences of arsenic accumulated by *Sargassum* on coastal and terrestrial ecosystems, but also on the putative health concerns for populations. In addition, the presence of various arsenic forms

⁵<https://guadeloupe.ademe.fr/sites/default/files/guide-valorisation-sargasses.pdf>

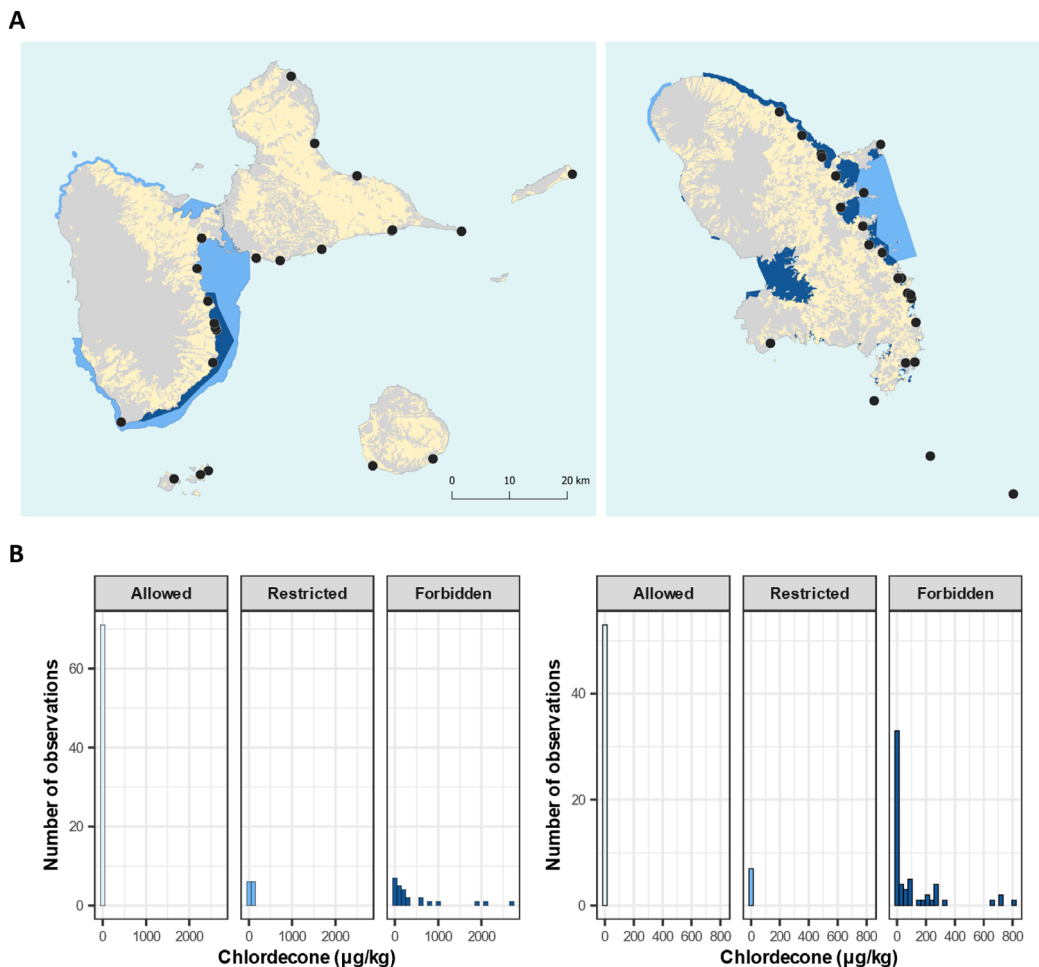


Figure 6. Maps showing the *Sargassum* sampling sites and chlordecone concentrations. (A) Some sampling sites from campaigns 2018 and 2019 overlapped. The Guadeloupe Archipelago (left) and Martinique Island (right). The color code corresponds to (yellow) cultivated lands, marine zones with no restrictions on fishing (light blue), marine zones with restrictions on fishing (medium blue), and marine zones where fishing is forbidden (dark blue) (BD Carto IGN, 2019). (B) Distribution of the chlordecone concentration ($\mu\text{g}/\text{kg}$) in *Sargassum* samples according to fishing area regulations, with the Guadeloupe Archipelago (left) and Martinique Island (right).

in *Sargassum* spp. might also hinder several downstream uses [Devault *et al.*, 2021].

3.2. Pesticide contamination

Because of the presence of chlordecone in various compartments of the French West Indies, questions about the accumulation of this pesticide in *Sargassum* were raised in 2015. The first study performed at

that time in Martinique demonstrated its presence in *Sargassum* samples.⁶

We further investigated contamination levels by CLD in *Sargassum* collected from coastal areas without or with restricted uses (Figure 6A). Indeed, since

⁶<https://www.guadeloupe.gouv.fr/content/download/8183/60117/file/1%20-%20valorisation%20-%20Institut%20Technique%20Tropical.pdf>.

2005, several prefectural decrees have led to the delimitation of coastal areas that are strictly prohibited from fishing a list of targeted fish, crustacean, mollusk and echinoderm species and others with partial protection. In both Guadeloupe and Martinique, CLD was found in samples from the watersheds of land used for banana cultivation (Figure 6B). In Guadeloupe, the highest concentrations were detected in sites that belong to the municipality Capesterre–Belle–Eau, where soils and the Pérou River are highly contaminated with chlordecone. In Martinique, the highest concentrations were found at “*Quartier bac*”, which belongs to the municipality La Trinité. Because of observed interannual variabilities, we propose that the authorities should implement more systematic analyses of CLD concentrations in *Sargassum*, at least for a number of local sites.

Contamination of *Sargassum* by other organic pollutants has been shown in the Caribbean with the presence of hydrocarbon compounds due to liquid oil spilling during the Deepwater Horizon disaster [Torralba *et al.*, 2017]. Based on our findings, we suggest a more systematic investigation of the presence of labile, persistent organic pollutants (POPs) and the so-called contaminants of emerging concern (i.e., pharmaceutical and personal care products, etc.) in these seaweeds. Chemical contaminants of edible and nonedible seaweeds are becoming a general concern [Ma *et al.*, 2018, Cherry *et al.*, 2019, Anbazhagan *et al.*, 2021, Hossain *et al.*, 2022] that will also require the adjustment of legislation and development of relevant guidelines for their handling, storage, use and disposal.

3.3. *Sargassum*-associated biodiversity

Pelagic *Sargassum* constitutes a floating ecosystem hosting various marine species, such as sea turtles, seabirds, fishes and even invertebrates [Parr, 1939, Weis, 1968, Fine, 1970, Dooley, 1972, Ryland, 1974, Haney, 1986, Jobe and Brooks, 2009, Ballard and Rakocinski, 2012, Witherington *et al.*, 2012, Jacobucci and Leite, 2014, Susilowati *et al.*, 2015, Monroy-Velazquez *et al.*, 2019], with a few being endemic species. Concerning the less described microbial (i.e., archaea, bacteria and small eukaryotes) composition, it is likely that they also contribute to *Sargassum* growth, nutrient uptake, macroalgae spore release and germination, defense against pathogens or

reproduction [Egan *et al.*, 2013, Florez *et al.*, 2017, Van Der Loos *et al.*, 2019]. Exchanges between the *Sargassum* holobiont and the surrounding environment might have reciprocal impacts and might occur depending on the environmental conditions; for example, microorganisms initially involved in algae growth, raft formation and maintenance or algae sinking might later contribute to algae biodegradation upon beaching [De Fouw *et al.*, 2016]. In addition, microbial communities associated with the seaweeds can proliferate in new habitats, as postulated for the export of surface-dwelling fauna associated with *Sargassum* from the surface to the seafloor.

At the molecular level, the investigation of the richness of microbial communities was mainly performed from surface drifting algae species [Torralba *et al.*, 2017, Michotey *et al.*, 2020]. We investigated for the first time the communities associated with *Sargassum* at beaches and storage sites [Hervé *et al.*, 2021]. For this purpose, we amplified regions corresponding to the 16S rRNA gene for prokaryotes and to 18S rRNA for eukaryotes from 100 samples collected in 2018 and corresponding to seawater surrounding the seaweeds, *Sargassum* from beaches (e.g., along the shores and landed) or storage sites. Concerning microbial richness, we identified 22,214 prokaryotic operational taxonomic units (OTUs) and 17,679 eukaryotic OTUs. Among them, we found that a large number of both prokaryotic and eukaryotic OTUs were shared between these three compartments (Figure 7A–B). Nevertheless, statistical analyses demonstrated that these three communities were different [Hervé *et al.*, 2021].

Interestingly, among the prokaryotes, we found a large number of bacterial OTUs that are probably involved in sulfur metabolism. From inland storage sites, we detected methanogenic archaea, which suggests that a portion of the carbohydrates from the seaweed alga is probably degraded and used as a potential energy source by these prokaryotes [Hervé *et al.*, 2021]. Further specific investigations of this microbial diversity could probably facilitate the development of biogas production and energy conversion procedures. We also found that the *Sargassum*-associated microbiota might contain potentially harmful and nonnative species that are probably co-transported by *Sargassum*. If confirmed, such results may have direct implications for risk assessment and reinforce the need to develop further

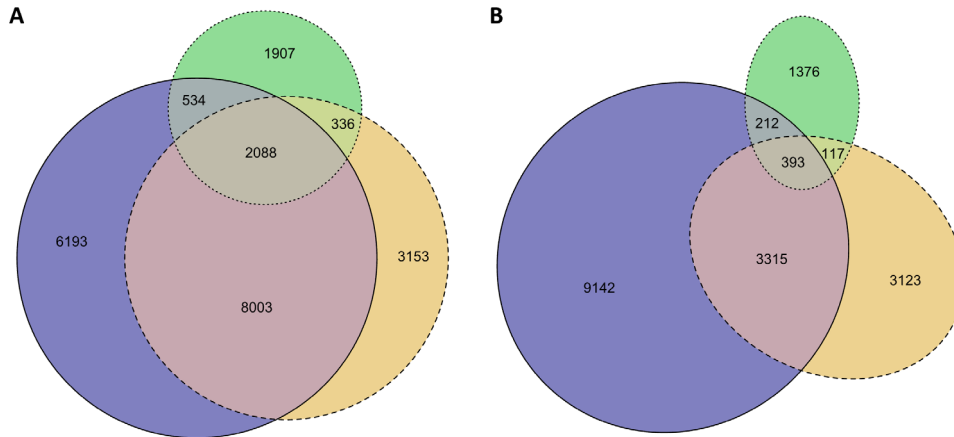


Figure 7. Venn diagrams of *Sargassum*-associated prokaryotic or eukaryotic OTUs. (A) Prokaryotes and (B) Eukaryotes. The color code corresponds to seawater surrounding *Sargassum* (blue), stranding *Sargassum* on the shore (orange), and *Sargassum* from storage sites (green).

studies on *Sargassum* holobionts, including those focused on biosafety and biosecurity.

4. Observation for knowledge and awareness

An important role of the OHM Caribbean Coast is also to promote and disseminate research findings to local stakeholders and the population, including for the teaching sphere and the younger generations. Indeed, we believe that even if there is probably in Guadeloupe, following the suggestions of Trevethan [Trevethan, 2017], a continuum on environmental concerns from general awareness knowledge (GAK) to detailed and specific knowledge (DSK), there might be considerable personal heterogeneity in awareness within the population that must be analyzed and documented for both the consequences of pesticide use and *Sargassum* influxes. In addition to scientists, social networks and local media play important roles in the construction of GAK. In a first step to analyze the putative differences between scientific information and public media, we compared here the number of scientific publications mentioning the words “biodiversity”, “arsenic”, “glyphosate”, “*Sargassum*” or “chlordecone” to the French equivalent from the local media of France Antilles (we pooled both the Martinique and Guadeloupe editions). Using the SCOPUS database and searches of article titles, abstracts and keywords, we found an increasing number of publications (Figures 8A–C)

except for chlordecone, which presented a more erratic pattern of publication with peaks in the mid-seventies corresponding to contamination issues at Hopewell and since 2010 due to issues in the French West Indies (Figure 8D). In contrast, in the local media, the interest was rather different, with a high number of publications focusing on *Sargassum* (Figure 8G) and chlordecone (Figure 8H) and barely any reports on arsenic or glyphosate (Figure 8F). For *Sargassum*, we found two peaks of publication in 2015 and 2018 corresponding to years with high levels of stranding, and potentially to the presence of an international conference on *Sargassum* that occurred in Guadeloupe during the year 2018. However, it will be interesting to study in more detail the link between press release on environmental concerns and other social issues such as political events.

Even if these analyses are still very partial, they illustrate the differences between scientific publications, local media and most likely general public awareness. Such an observation reinforces our motivation as an observatory to further develop actions to diffuse knowledge and scientific information on contaminants along the land-ocean continuum. In the future, we hope to further analyze public awareness, concerns and priorities by comparing various publication supports completed through surveys and interviews. We therefore hope to be able to gain insight into the sensitivity of the local populations and to draw comparisons to people from other European

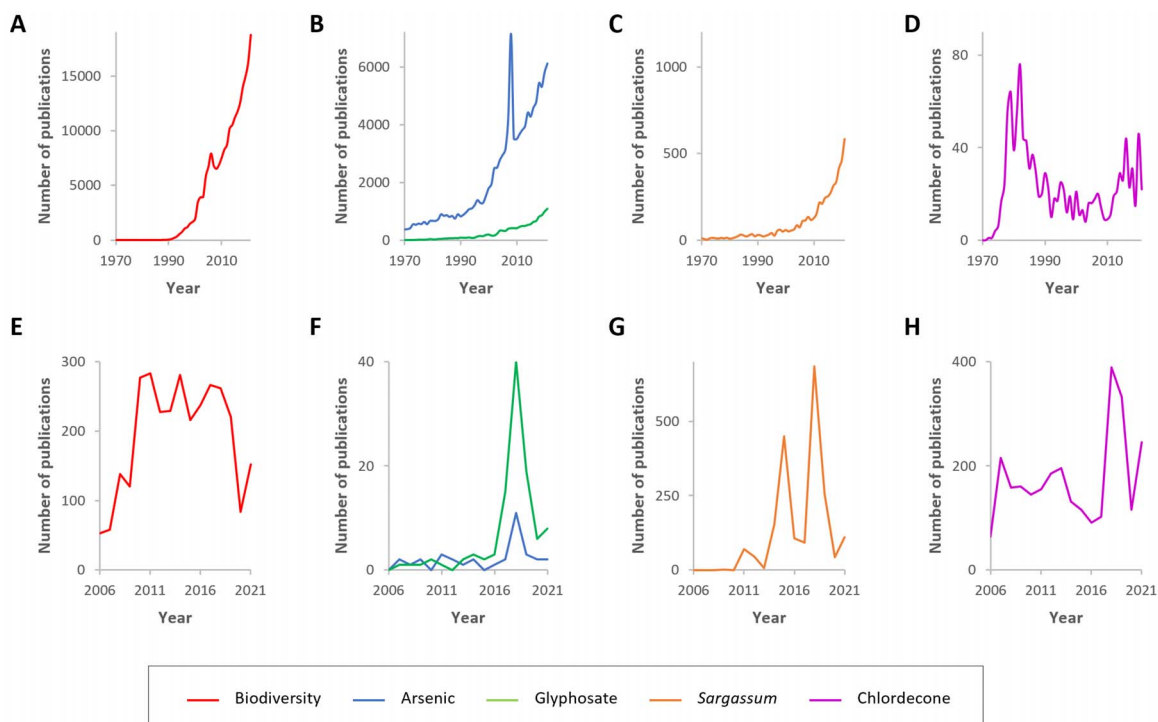


Figure 8. Environmental concern reports in the scientific literature and media of France Antilles (Guadeloupe and Martinique). Graphs correspond to searches of the SCOPUS database for 1970–2021 (A–D) or the France Antilles database for 2006 to 2021 (E–H). For arsenic, the exceptionally high number of publications from 2008 is likely related to the Second International Congress titled “Arsenic from Nature to Humans” of 2008, which accounted for 1492 conference papers published during this year. This survey was performed on October 2022.

nations in regard to, for example, marine environmental concerns [Gelcich *et al.*, 2014].

5. Conclusions

The most recent “*Sargassum* crisis” that started with the first stranding of *Sargassum* in 2011 has created new cross-contamination issues between seaweed, the coastal zone and inland storage sites by heavy metals (i.e., arsenic) and organic pollutants (i.e., chlordecone). Analyses of other pollution drivers within the coastal transition zone have revealed dependencies not only between past and current agricultural uses but also with soil erosion and the composition of coastal eukaryotic assemblages. We should also develop more theoretical approaches to evaluate social concerns, as proposed by Fitzgerald [Fitzgerald, 2019], to properly address the multiple causalities, causal asymmetries, and most likely

equifinality of environmental pollution concerns. We hope that the OHM Caribbean Coast, which uses a long-term interdisciplinary framework, will properly investigate social environmental trajectories, envision integrated solutions and bring awareness to local populations.

Declaration of interests

The authors do not work for, advise, own shares in, or receive funds from any organization that could benefit from this article, and have declared no affiliations other than their research organizations.

Acknowledgments

We would like to thank France-Antilles for allowing access to their publication database. We would like

to thank the Labex DRIIHM; the French program “Investissements d’Avenir” (ANR-11-LABX-0010), which is managed by the ANR. This work was supported in part by the Agence de l’environnement et de la maîtrise de l’énergie (ADEME). The authors thank the anonymous referees for their helpful comments that improved the quality of the manuscript. We are also grateful to our colleagues working within the OHM Caribbean Coast, and to Oscar for his support.

References

- Adams, S. A. (2017). Sustainable cruise ship employment for the Caribbean region - a conceptual perspective. *Worldw. Hospitality Tourism Themes*, 9, 60–69.
- Amaral-Zettler, L. A., Dragone, N. B., Schell, J., Slikas, B., Murphy, L. G., Morrall, C. E., and Zettler, E. R. (2017). Comparative mitochondrial and chloroplast genomics of a genetically distinct form of *Sargassum* contributing to recent “Golden Tides” in the Western Atlantic. *Ecol. Evol.*, 7, 516–525.
- Anbazhagan, V., Partheeban, E. C., Arumugam, G., Arumugam, A., Rajendran, R., Paray, B. A., Al-Sadoon, M. K., and Al-Mfarij, A. R. (2021). Health risk assessment and bioaccumulation of metals in brown and red seaweeds collected from a tropical marine biosphere reserve. *Mar. Pollut. Bull.*, 164, article no. 112029.
- Aparicio, V. C., De Gerónimo, E., Marino, D., Pri-most, J., Carriquiriborde, P., and Costa, J. L. (2013). Environmental fate of glyphosate and aminomethylphosphonic acid in surface waters and soil of agricultural basins. *Chemosphere*, 93, 1866–1873.
- Bacigal, R. J. and Bacigal, M. I. (1987). Criminal prosecutions in environmental law: a study of the Kepone case. *Columbia J. Environ. Law*, 12, 291–316.
- Ballard, S. E. and Rakocinski, C. F. (2012). Flexible feeding strategies of juvenile gray triggerfish (*Balistes capricus*) and planehead filefish (*Stephanolepis hispidus*) with *Sargassum* habitat. *Gulf Caribb. Res.*, 24, 31–40.
- Bellard, C., Leclerc, C., and Courchamp, F. (2014). Impact of sea level rise on the 10 insular biodiversity hotspots. *Global Ecol. Biogeogr.*, 23, 203–212.
- Benjamin, L. and Thomas, A. (2019). Political economy of coastal development the case of the Caribbean. In Harris, P. G., editor, *Climate Change and Ocean Governance: Politics and Policy for the Threatened Seas*, pages 45–59. Cambridge University Press, Cambridge, UK.
- Bertrand, J. A., Bodiguel, X., Abarnou, A., Reynal, L., and Bocquené, G. (2010). Chlordecone in the marine environment around the French West Indies; from measurement to pollution management decisions. Rapport CES-CM 2010 / F07. IFREMER.
- Binder, C. R., Hinkel, J., Bots, P. W. G., and Pahl-Wostl, C. (2013). Comparison of frameworks for analyzing social-ecological systems. *Ecol. Soc.*, 18(4), 1–26.
- Boere, A., Sinninghe-Damste, J., Rijpstra, I., Volkman, J., and Coolen, M. (2011). Source-specific variability in post-depositional DNA preservation with potential implications for DNA based paleoecological records. *Org. Geochem.*, 42, 1216–1225.
- Bonan, H. and Prime, J.-L. (2001). Rapport sur la présence de pesticides dans les eaux de consommation humaine de la Guadeloupe. Ministère de l’emploi et de la solidarité, Ministère de l’aménagement du territoire et de l’environnement, Inspection générale de l’environnement.
- Bouchon, C., Lemoine, S., Dromard, C., and Bouchon-Navaro, Y. (2016). Level of contamination by metallic trace elements and organic molecules in the seagrass beds of Guadeloupe island. *Environ. Sci. Pollut. Res.*, 23, 61–72.
- Bourgeron, P., Kliskey, A., Alessa, L., Loescher, H., Krauze, K., Virapongse, A., and Griffith, D. L. (2018). Understanding large-scale, complex, human–environmental processes: a framework for social–ecological observatories. *Front. Ecol. Environ.*, 16, S52–S66.
- Cabanillas-Teran, N., Hernandez-Arana, H. A., Ruiz-Zarate, M. A., Vega-Zepeda, A., and Sanchez-Gonzalez, A. (2019). *Sargassum* blooms in the Caribbean alter the trophic structure of the sea urchin *Diadema antillarum*. *PeerJ*, 7, article no. e7589.
- Cannon, S. B., Veazey Jr., J. M., Jackson, R. S., Burse, V. W., Hayes, C., Straub, W. E., Landrigan, P. J., and Liddle, J. A. (1978). Epidemic Kepone poisoning in chemical workers. *Am. J. Epidemiol.*, 107, 529–537.
- Capo, E., Debroas, D., Arnaud, F., Guillemot, T., Bichet, V., Millet, L., Gauthier, E., Massa, C., De-velle, A. L., Pignol, C., Lejzerowicz, F., and Domaizon, I. (2016). Long-term dynamics in micro-

- bial eukaryotes communities: a palaeolimnological view based on sedimentary DNA. *Mol. Ecol.*, 25, 5925–5943.
- Capo, E., Giguët-Covex, C., Rouillard, A., Nota, K., Heintzman, P. D., Vuillemin, A., Ariztegui, D., Arnaud, F., Belle, S., Bertilsson, S., Bigler, C., Bindler, R., Brown, A. G., Clarke, C. L., Crump, S. E., Debroas, D., Englund, G., Ficetola, G. F., Garner, R. E., Gauthier, J., Gregory-Eaves, I., Heinecke, L., Herzsuh, U., Ibrahim, A., Kisand, V., Kjær, K. H., Lammers, Y., Littlefair, J., Messenger, E., Monchamp, M.-E., Olajos, F., Orsi, W., Pedersen, M. W., Rijal, D. P., Rydberg, J., Spanbauer, T., Stoof-Leichsenring, K. R., Taberlet, P., Talas, L., Thomas, C., Walsh, D. A., Wang, Y., Willerslev, E., Van Wierkom, A., Zimmermann, H. H., Coolen, M. J. L., Epp, L. S., Domaizon, I. G., Alsos, I., and Parducci, L. (2021). Lake sedimentary DNA research on past terrestrial and aquatic biodiversity: overview and recommendations. *Quaternary*, 4(6), 1–61.
- Chenorkian, R. (2020). Conception and implementation of interdisciplinarity in the Human-Environment Observatories (OHM, CNRS). *Nat. Sci. Soc.*, 28, 278–291.
- Cherry, P., O'hara, C., Magee, P. J., Mccorley, E. M., and Allsopp, P. J. (2019). Risks and benefits of consuming edible seaweeds. *Nutr. Rev.*, 77, 307–329.
- Cipolloni, O. A., Gigault, J., Dassie, E. P., Baudrimont, M., Gourves, P. Y., Amaral-Zettler, L., and Pascal, P. Y. (2022). Metals and metalloids concentrations in three genotypes of pelagic *Sargassum* from the Atlantic Ocean Basin-scale. *Mar. Pollut. Bull.*, 178, article no. 113564.
- Coat, S., Monti, D., Legendre, P., Bouchon, C., Massat, F., and Lepoint, G. (2011). Organochlorine pollution in tropical rivers (Guadeloupe): role of ecological factors in food web bioaccumulation. *Environ. Pollut.*, 159, 1692–1701.
- Cohen, J. E., Clarke-Harris, D. O., Khan, A., and Isaac, W.-A. P. (2015). Sustainable management of invasive species for Small Island Developing States under changing climates. In Ganpat, W. G. and Isaac, W.-A. P., editors, *Impacts of Climate Change on Food Security in Small Island Developing States*. IGI Global.
- Comte, I., Pradel, A., Crabit, A., Mottes, C., Pak, L. T., and Cattan, P. (2022). Long-term pollution by chlordecone of tropical volcanic soils in the French West Indies: new insights and improvement of previous predictions. *Environ. Pollut.*, 303, article no. 119091.
- Corrales, N., Meerhoff, M., and Antoniadis, D. (2021). Glyphosate-based herbicide exposure affects diatom community development in natural biofilms. *Environ. Pollut.*, 284, article no. 117354.
- Costet, N., Lafontaine, A., Rouget, F., Michineau, L., Monfort, C., Thomé, J. P., Kadhel, P., Multigner, L., and Cordier, S. (2022). Prenatal and childhood exposure to chlordecone and adiposity of seven-year-old children in the Timoun mother-child cohort study in Guadeloupe (French West Indies). *Environ. Health*, 21, article no. 42.
- Couch, J. A., Winstead, J. T., and Goodman, L. R. (1977). Kepone-induced scoliosis and its histological consequences in fish. *Science*, 197, 585–587.
- Crabit, A., Cattan, P., Colin, F., and Voltz, M. (2016). Soil and river contamination patterns of chlordecone in a tropical volcanic catchment in the French West Indies (Guadeloupe). *Environ. Pollut.*, 212, 615–626.
- Cuhra, M., Bohn, T., and Cuhra, P. (2016). Glyphosate: too much of a good thing? *Front. Environ. Sci.*, 4, 14–27.
- Dahomé Di Ruggiero, M. (2017). Anthropisation du littoral à mangroves en Guadeloupe, Antilles Françaises: caractérisation et impacts. *VertigO*, 17(3), 1–22.
- De Fouw, J., Govers, L. L., Van De Koppel, J., Van Belzen, J., Dorigo, W., Sidi Cheikh, M. A., Christianen, M. J., Van Der Reijden, K. J., Van Der Geest, M., Piersma, T., Smolders, A. J., Olf, H., Lamers, L. P., Van Gils, J. A., and Van Der Heide, T. (2016). Drought, mutualism breakdown, and landscape-scale degradation of seagrass beds. *Curr. Biol.*, 26, 1051–1056.
- Debenest, T., Silvestre, J., Coste, M., and Pinelli, E. (2010). Effects of pesticides on freshwater diatoms. In Whitacre, D. M., editor, *Reviews of Environmental Contamination and Toxicology*, pages 87–103. Springer, New York, NY.
- Deffontaines, L., Mottes, C., and Comte, I. (2017). Appui au pilotage et au suivi du dispositif d'instrumentation pour la caractérisation des pesticides du bassin versant pilote martiniquais du Galion. Plan Chlordécone 3 : Action 18. Sous action "Fonctionnement des bassins versants". Rapport final CIRAD.
- Deffontaines, L., Mottes, C., Della Rossa, P., Lesueur-

- Jannoyer, M., Cattan, P., and Le Bail, M. (2020). How farmers learn to change their weed management practices: Simple changes lead to system redesign in the French West Indies. *Agric. Sys.*, 179, article no. 102769.
- Dehoorne, O. and Augier, D. (2011). Toward a new tourism policy in the French West Indies: the end of mass tourism resorts and a new policy for sustainable tourism and ecotourism. *Etud. Caribb.*, 19, 1–17.
- Dell'anno, A., Stefano, B., and Danovaro, R. (2002). Quantification, base composition, and fate of extracellular DNA in marine sediments. *Limnol. Oceanogr.*, 47, 899–905.
- Dereumeaux, C., Volatier, J. L., Guldner, L., Saoudi, A., Pecheux, M., Rivière, G., and Fillol, C. (2020). Chlordecone in French West Indies: from the characterization of food contamination to impregnation in the population. Results from the KANNARI study 2013–2014. Santé et environnement: données de biosurveillance et études d'imprégnation. *Bull. Epidémiol. Hebd.*, 18–19, 370–378.
- Devault, D. A., Massat, E., Lambourdiere, J., Mariadakis, C., Dupuy, L., Pene-Annette, A., and Dolique, F. (2022). Micropollutant content of *Sargassum* drifted ashore: arsenic and chlordecone threat assessment and management recommendations for the Caribbean. *Environ. Sci. Pollut. Res. Int.*, 29, 66315–66334.
- Devault, D. A., Pierre, R., Marfaing, H., Dolique, F., and Lopez, P. J. (2021). *Sargassum* contamination and consequences for downstream uses: a review. *J. Appl. Phycol.*, 33, 567–602.
- Dooley, J. K. (1972). Fishes associated with the pelagic *Sargassum* complex with a discussion of *Sargassum* community. *Fish. Bull.*, 16, 1–32.
- Dromard, C. R., Bodiguel, X., Lemoine, S., Bouchon-Navaro, Y., Reynal, L., Thouard, E., and Bouchon, C. (2016). Assessment of the contamination of marine fauna by chlordecone in Guadeloupe and Martinique (Lesser Antilles). *Environ. Sci. Pollut. Res.*, 23, 73–80.
- Dromard, C. R., Bouchon-Navaro, Y., Cordonnier, S., Guene, M., Harmelin-Vivien, M., and Bouchon, C. (2018a). Different transfer pathways of an organochlorine pesticide across marine tropical food webs assessed with stable isotope analysis. *PLoS One*, 13(2), article no. e0191335.
- Dromard, C. R., Devault, D. A., Bouchon-Navaro, Y., Allenou, J. P., Budzinski, H., Cordonnier, S., Tapie, N., Reynal, L., Lemoine, S., Thome, J. P., Thouard, E., Monti, D., and Bouchon, C. (2022). Environmental fate of chlordecone in coastal habitats: recent studies conducted in Guadeloupe and Martinique (Lesser Antilles). *Environ. Sci. Pollut. Res.*, 29, 51–60.
- Dromard, C. R., Guene, M., Bouchon-Navaro, Y., Lemoine, S., Cordonnier, S., and Bouchon, C. (2018b). Contamination of marine fauna by chlordecone in Guadeloupe: evidence of a seaward decreasing gradient. *Environ. Sci. Pollut. Res.*, 25, 14294–14301.
- Druille, M., Omacini, M., Golluscio, R. A., and Cabello, M. N. (2013). Arbuscular mycorrhizal fungi are directly and indirectly affected by glyphosate application. *Appl. Soil Ecol.*, 72, 143–149.
- Drzyzga, D. and Lipok, J. (2018). Glyphosate dose modulates the uptake of inorganic phosphate by freshwater cyanobacteria. *J. Appl. Phycol.*, 30, 299–309.
- Egan, S., Harder, T., Burke, C., Steinberg, P., Kjelleberg, S., and Thomas, T. (2013). The seaweed holobiont: understanding seaweed-bacteria interactions. *FEMS Microbiol. Rev.*, 37, 462–476.
- Epstein, S. S. (1978). Kepone - hazard evaluation. *Sci. Total Environ.*, 9, 1–62.
- Fernandez-Palacios, J. M., Kreft, H., Irl, S. D. H., Norder, S., Ah-Peng, C., Borges, P. A. V., Burns, K. C., De Nascimento, L., Meyer, J. Y., Montes, E., and Drake, D. R. (2021). Scientists' warning - The outstanding biodiversity of islands is in peril. *Glob. Ecol. Conserv.*, 31, article no. e01847.
- Fine, M. L. (1970). Faunal variation on pelagic *Sargassum*. *Mar. Biol.*, 7, 112–122.
- Fitzgerald, J. B. (2019). Equifinality and pathways to environmental concern: a fuzzy-set analysis. *Socius*, 5, article no. 2378023119872412.
- Florez, J. Z., Camus, C., Hengst, M. B., and Buschmann, A. H. (2017). A functional perspective analysis of macroalgae and epiphytic bacterial community interaction. *Front. Microbiol.*, 8, article no. 2561.
- Gelcich, S., Buckley, P., Pinnegar, J. K., Chilvers, J., Lorenzoni, I., Terry, G., Guerrero, M., Castilla, J. C., Valdebenito, A., and Duarte, C. M. (2014). Public awareness, concerns, and priorities about anthropogenic impacts on marine environments. *Proc. Natl. Acad. Sci. USA*, 111, 15042–15047.

- Giguet-Covex, C., Ficetola, G. F., Walsh, K., Poulenard, J., Bajard, M., Fouinat, L., Sabatier, P., Gielly, L., Messenger, E., Develle, A. L., David, F., Taberlet, P., Brisset, E., Guiter, F., Sinet, R., and Arnaud, F. (2019). New insights on lake sediment DNA from the catchment: importance of taphonomic and analytical issues on the record quality. *Sci. Rep.*, 9, article no. 14676.
- Goldfarb, W. (1978). Kepone: a case study. *Environ. Law*, 8, 645–662.
- Haney, J. C. (1986). Seabird patchiness in tropical oceanic waters - the influence of *Sargassum* "reefs". *Auk*, 103, 141–151.
- Hervé, V., Lambourdiere, J., Rene-Trouillefou, M., Devault, D. A., and Lopez, P. J. (2021). *Sargassum* differentially shapes the microbiota composition and diversity at coastal tide sites and inland storage sites on Caribbean islands. *Front. Microbiol.*, 12, article no. 701155.
- Hervé, V., Sabatier, P., Lambourdière, J., Poulenard, J., and Lopez, P. J. (2023). Temporal pesticides dynamics alter specific eukaryotic taxa in a coastal transition zone. *Sci. Total Environ.*, 866, article no. 161205.
- Hossain, M. S., Liyana, E., Sifat, S. A., Ameen, F., Ullah, M. A., Jolly, Y. N., Quraishi, S. B., Hossain, M., Salleh, S., Akter, S., Hossain, M. A., Bin Mukhlis, M. Z., and Elliott, M. (2022). Trace element bioaccumulation in edible red seaweeds (Rhodophyta): a risk assessment for consumers. *Environ. Pollut.*, 307, article no. 119560.
- Hubas, C., Monti, D., Mortillaro, J. M., Augagneur, S., Carbon, A., Duran, R., Karama, S., Meziame, T., Pardon, P., Risser, T., Tapie, N., Thiney, N., Budzinski, H., and Lauga, B. (2022). Chlordecone-contaminated epilithic biofilms show increased adsorption capacities. *Sci. Total Environ.*, 825, article no. 153942.
- Innocenti, R. A., Feagin, R. A., and Huff, T. P. (2018). The role of *Sargassum* macroalgal wrack in reducing coastal erosion. *Estuar. Coast. Shelf Sci.*, 214, 82–88.
- Jacobucci, G. and Leite, F. (2014). The role of epiphytic algae and different species of *Sargassum* in the distribution and feeding of herbivorous amphipods. *Latin Am. J. Aquat. Res.*, 42, 353–363.
- Jobe, C. F. and Brooks, W. R. (2009). Habitat selection and host location by symbiotic shrimps associated with *Sargassum* communities: The role of chemical and visual cues. *Symbiosis*, 49, 77–85.
- Kermarrec, A. (1980). Niveau actuel de la contamination des chaînes biologiques en Guadeloupe: pesticides et métaux lourds 1979–1980. Paris : INRA, 155 p.
- Larras, F., Montuelle, B., and Bouchez, A. (2013). Assessment of toxicity thresholds in aquatic environments: Does benthic growth of diatoms affect their exposure and sensitivity to herbicides? *Sci. Total Environ.*, 463–464, 469–477.
- Li, H., Joshi, S. R., and Jaisi, D. P. (2016). Degradation and isotope source tracking of glyphosate and aminomethylphosphonic acid. *J. Agric. Food Chem.*, 64, 529–538.
- Loffler, Z. and Hoey, A. S. (2018). Canopy-forming macroalgal beds (*Sargassum*) on coral reefs are resilient to physical disturbance. *J. Ecol.*, 106, 1156–1164.
- Lozano, V. L., Vinocur, A., Garcia, C., Allende, L., Cristos, D. S., Rojas, D., Wolansky, M., and Pizarro, H. (2018). Effects of glyphosate and 2, 4-D mixture on freshwater phytoplankton and periphyton communities: a microcosms approach. *Ecotoxicol. Environ. Saf.*, 148, 1010–1019.
- Luellen, D. R., Vadas, G. G., and Unger, M. A. (2006). Kepone in James River fish: 1976–2002. *Sci. Total Environ.*, 358, 286–297.
- Ma, Z. L., Lin, L. D., Wu, M. J., Yu, H. G., Shang, T. G., Zhang, T. T., and Zhao, M. (2018). Total and inorganic arsenic contents in seaweeds: absorption, accumulation, transformation and toxicity. *Aquaculture*, 497, 49–55.
- Mackay, E. A. and Spencer, A. (2017). The future of Caribbean tourism: competition and climate change implications. *Worldw. Hospitality Tourism Themes*, 9, 44–59.
- Madaj, R., Sobiecka, E., and Kalinowska, H. (2018). Lindane, kepone and pentachlorobenzene: chloropesticides banned by Stockholm convention. *Int. J. Environ. Sci. Technol.*, 15, 471–480.
- Maggi, F., La Cecilia, D., Tang, F. H. M., and Mcbratney, A. (2020). The global environmental hazard of glyphosate use. *Sci. Total Environ.*, 717, article no. 137167.
- Mahaffey, W. R., Pritchard, P. H., and Bourquin, A. W. (1982). Effects of Kepone on growth and respiration of several estuarine bacteria. *Appl. Environ. Microbiol.*, 43, 1419–1424.

- Martin, L. M., Taylor, M., Huston, G., Goodwin, D. S., Schell, J. M., and Siuda, A. N. S. (2021). Pelagic *Sargassum* morphotypes support different rafting motile epifauna communities. *Mar. Biol.*, 168, article no. 115.
- Maunder, M., Leiva, A., Santiago-Valentin, E., Stevenson, D. W., Acevedo-Rodriguez, P., Meerow, A. W., Mejia, M., Clubbe, C., and Francisco-Ortega, J. (2008). Plant conservation in the Caribbean Island biodiversity hotspot. *Bot. Rev.*, 74, 197–207.
- Mendez-Fernandez, P., Kiszka, J. J., Heithaus, M. R., Beal, A., Vandersarren, G., Caurant, F., Spitz, J., Taniguchi, S., and Montone, R. C. (2018). From banana fields to the deep blue: Assessment of chlordecone contamination of oceanic cetaceans in the eastern Caribbean. *Mar. Pollut. Bull.*, 137, 56–60.
- Mesquita, A. F., Goncalves, F. J. M., Rocha, C. P., Marques, J. C., and Goncalves, A. M. M. (2021). Biochemical effects of two pesticides in three different temperature scenarios on the diatom *Thalassiosira weissflogii*. *Processes*, 9(7), article no. 1247.
- Michotey, V., Blanfune, A., Chevalier, C., Garel, M., Diaz, F., Berline, L., Le Grand, L., Armougom, F., Guasco, S., Ruitton, S., Changeux, T., Belloni, B., Blanchot, J., Menard, F., and Thibaut, T. (2020). *In situ* observations and modelling revealed environmental factors favouring occurrence of *Vibrio* in microbiome of the pelagic *Sargassum* responsible for strandings. *Sci. Total Environ.*, 748, article no. 141216.
- Mickelson, S. K., Boyd, P., Baker, J. L., and Ahmed, S. I. (2001). Tillage and herbicide incorporation effects on residue cover, runoff, erosion, and herbicide loss. *Soil Tillage Res.*, 60, 55–66.
- Miller, M. L. and Auyong, J. (1991). Coastal zone tourism - a potent force affecting environment and society. *Mar. Policy*, 15, 75–99.
- Miloslavich, P., Diaz, J. M., Klein, E., Alvarado, J. J., Diaz, C., Gobin, J., Escobar-Briones, E., Cruz-Motta, J. J., Weil, E., Cortes, J., Bastidas, A. C., Robertson, R., Zapata, F., Martin, A., Castillo, J., Kazandjian, A., and Ortiz, M. (2010). Marine biodiversity in the Caribbean: regional estimates and distribution patterns. *PLoS One*, 5, article no. e11916.
- Minh, B. Q., Schmidt, H. A., Chernomor, O., Schrempf, D., Woodhams, M. D., Von Haeseler, A., and Lanfear, R. (2020). IQ-TREE 2: new models and efficient methods for phylogenetic inference in the genomic era. *Mol. Biol. Evol.*, 37, 1530–1534.
- Monroy-Velazquez, L. V., Rodriguez-Martinez, R. E., Van Tussenbroek, B. I., Aguiar, T., Solis-Weiss, V., and Briones-Fourzan, P. (2019). Motile macrofauna associated with pelagic *Sargassum* in a Mexican reef lagoon. *J. Environ. Manage.*, 252, article no. 109650.
- Monti, D., Hubas, C., Lourenço, X., Begarin, F., Haouisée, A., Romana, L., Lefrançois, E., Jestin, A., Budzinski, H., Tapie, N., Risser, T., Mansot, J. L., Keith, P., Gros, O., Lopez, P. J., and Lauga, B. (2020). Physical properties of epilithic river biofilm as a new lead to perform pollution bioassessments in overseas territories. *Sci. Rep.*, 10, article no. 17309.
- Mottes, C., Charlier, J.-P., Rocle, N., Gresser, J., Lesueur Jannoyer, M., and Cattan, P. (2016). From fields to rivers chlordecone transfer in water. In Lesueur Jannoyer, M., Cattan, P., Woignier, T., and Clostre, F., editors, *Crisis Management of Chronic Pollution: Contaminated Soil and Human Health*, pages 121–130. CRC Press, Boca Raton, FL.
- Mottes, C., Lesueur Jannoyer, M., Le Bail, M., Guene, M., Caries, C., and Malezieux, E. (2017). Relationships between past and present pesticide applications and pollution at a watershed outlet: The case of a horticultural catchment in Martinique, French West Indies. *Chemosphere*, 184, 762–773.
- Mottes, C., Sabatier, J., Evrard, O., Cottin, N., Arnaud, F., Comte, I., Piot, C., Lesueur-Jannoyer, M., Lichtfouse, E., and Poulenard, J. (2021). Pesticide resurrection. *Environ. Chem. Lett.*, 20, 3357–3362.
- Mougi, A. (2020). Coupling of green and brown food webs and ecosystem stability. *Ecol. Evol.*, 10, 9192–9199.
- Multigner, L., Kadhel, P., Rouget, F., Blanchet, P., and Cordier, S. (2016). Chlordecone exposure and adverse effects in French West Indies populations. *Environ. Sci. Pollut. Res.*, 23, 3–8.
- Multigner, L., Ndong, J. R., Giusti, A., Romana, M., Delacroix-Maillard, H., Cordier, S., Jegou, B., Thome, J. P., and Blanchet, P. (2010). Chlordecone exposure and risk of prostate cancer. *J. Clin. Oncol.*, 28, 3457–3462.
- Munoz, D., Guiliano, M., Doumenq, P., Jacquot, F., Scherrer, P., and Mille, G. (1997). Long term evolution of petroleum biomarkers in mangrove soil (Guadeloupe). *Mar. Pollut. Bull.*, 34, 868–874.

- Mycoo, M., Wairiu, M., Campbell, D., Duvat, V., Golbuu, Y., Maharaj, S., Nalau, J., Nunn, P., Pinnegar, J., and Warrick, O. (2022). Small Islands. In Pörtner, H.-O., Roberts, D. C., Tignor, M., Poloczanska, E. S., Mintenbeck, K., Alegría, A., Craig, M., Langsdorf, S., Löschke, S., Möller, V., Okem, A., and Rama, B., editors, *Climate Change 2022: Impacts, Adaptation and Vulnerability*, pages 2043–2121. Cambridge University Press, New York, NY.
- Nicolas-Bragance, F. and Saffache, P. (2016). Les littoraux des Antilles françaises : entre vulnérabilité et attractivité. *Dyn. Environ.*, 38, 94–107.
- Orndorff, S. A. and Colwell, R. R. (1980). Distribution and characterization of Kepone-resistant bacteria in the aquatic environment. *Appl. Environ. Microbiol.*, 39, 611–622.
- Ortega-Flores, P. A., Serviere-Zaragoza, E., De Anda-Montanez, J. A., Freile-Pelegrin, Y., Robledo, D., and Mendez-Rodriguez, L. C. (2022). Trace elements in pelagic *Sargassum* species in the Mexican Caribbean: Identification of key variables affecting arsenic accumulation in *Sargassum fluitans*. *Sci. Total Environ.*, 806(2), article no. 150657.
- Paris, R., Sabatier, P., Biguenet, M., Bougouin, A., Andre, G., and Roger, J. (2021). A tsunami deposit at Anse Meunier, Martinique island: evidence of the 1755 CE Lisbon tsunami and implication for hazard assessment. *Mar. Geol.*, 439, article no. 106561.
- Parr, A. E. (1939). *Quantitative Observations on the Pelagic Sargassum Vegetation of the Western North Atlantic*. Yale University, New Haven.
- Ramdine, G., Fichet, D., Louis, M., and Lemoine, S. (2012). Polycyclic aromatic hydrocarbons (PAHs) in surface sediment and oysters (*Crassostrea rhizophorae*) from mangrove of Guadeloupe: levels, bioavailability, and effects. *Ecotoxicol. Environ. Saf.*, 79, 80–89.
- Reich, M. R. and Spong, J. K. (1983). Kepone: a chemical disaster in Hopewell, Virginia. *Int. J. Health Serv.*, 13, 227–246.
- Resiere, D., Valentino, R., Nevriere, R., Banydeen, R., Gueye, P., Florentin, J., Cabie, A., Lebrun, T., Megarbane, B., Guerrier, G., and Mehdaoui, H. (2018). *Sargassum* seaweed on Caribbean islands: an international public health concern. *Lancet*, 392, 2691–2691.
- Rivas-Garcia, T., Espinosa-Calderón, A., Hernández-Vázquez, B., and Schwentesius-Rindermann, R. (2022). Overview of environmental and health effects related to glyphosate usage. *Sustainability*, 14, article no. 6868.
- Robinson, S. A. (2018). Adapting to climate change at the national level in Caribbean small island developing states. *Isl. Stud. J.*, 13, 79–100.
- Rodriguez-Martinez, R. E., Medina-Valmaseda, A. E., Blanchon, P., Monroy-Velazquez, L. V., Almazan-Becerril, A., Delgado-Pech, B., Vasquez-Yeomans, L., Francisco, V., and Garcia-Rivas, M. C. (2019). Faunal mortality associated with massive beaching and decomposition of pelagic *Sargassum*. *Mar. Pollut. Bull.*, 146, 201–205.
- Rodriguez-Martinez, R. E., Roy, P. D., Torrescano-Valle, N., Cabanillas-Teran, N., Carrillo-Dominguez, S., Collado-Vides, L., Garcia-Sanchez, M., and Van Tussenbroek, B. I. (2020). Element concentrations in pelagic *Sargassum* along the Mexican Caribbean coast in 2018–2019. *PeerJ*, 8, article no. e866.
- Rutten, J., Arriaga, J., Montoya, L. D., Marino-Tapia, I. J., Escalante-Mancera, E., Mendoza, E. T., Tussenbroek, B. I., and Appendini, C. M. (2021). Beaching and natural removal dynamics of pelagic *Sargassum* in a fringing-reef lagoon. *J. Geophys. Res.-Oceans*, 126, article no. e2021JC017636.
- Ryland, J. S. (1974). Observations on some epibionts of gulf-weed, *Sargassum natans* (L) Meyen. *J. Exp. Mar. Biol. Ecol.*, 14, 17–25.
- Saaidi, P.-L., Grünberger, O., Samouëlian, A., Le Roux, Y., Richard, A., Devault, D. A., Feidt, C., Benoit, P., Evrard, O., Imfeld, G., Mouvet, C., and Voltz, M. (2023). Is a dissipation half-life of 5 years for chlordecone in soils of the French West Indies relevant? *Environ. Pollut.*, 324, article no. 121283.
- Sabatier, P., Mottes, C., Cottin, N., Evrard, O., Comte, I., Piot, C., Gay, B., Arnaud, F., Lefevre, I., Develle, A.-L., Deffontaines, L., Plet, J., Lesueur-Jannoyer, M., and Poulenard, J. (2021). Evidence of chlordecone resurrection by glyphosate in French West Indies. *Environ. Sci. Technol.*, 55, 2296–2306.
- Sabatier, P., Poulenard, J., Fanget, B., Reyss, J. L., Develle, A. L., Wilhelm, B., Ployon, E., Pignol, C., Nafrechoux, E., Dorioz, J. M., Montuelle, B., and Arnaud, F. (2014). Long-term relationships among pesticide applications, mobility, and soil erosion in a vineyard watershed. *Proc. Natl. Acad. Sci. USA*, 111, 15647–15652.
- Schell, J. M., Goodwin, D. S., and Siuda, A. N. S. (2015). Recent *Sargassum* inundation events in

- the Caribbean shipboard observations reveal dominance of a previously rare form. *Oceanography*, 28, 8–10.
- Schimmel, S. C. and Wilson, A. J. (1977). Acute toxicity of Kepone to four estuarine animals. *Chesap. Sci.*, 19, 224–227.
- Schuhmann, P. W., Irvine, J., Oxenford, H. A., Degia, A. K., and Valderrama, J. P. (2022). The potential economic impacts of *Sargassum* inundations in the Caribbean, Part 1: Insights from the literature. SargAdapt Project Report, Final Draft. Centre for Resource Management and Environmental Studies (CERMES), University of the West Indies, Cave Hill, Barbados, 57pp.
- Scott, D., Simpson, M. C., and Sim, R. (2012). The vulnerability of Caribbean coastal tourism to scenarios of climate change related sea level rise. *J. Sustain. Tourism*, 20, 883–898.
- Snegaroff, J. (1977). Les résidus d'insecticides organochlorés dans les sols et les rivières de la région bananière de Guadeloupe. *Phytiatrie-Phytopharmacie*, 26, 215–268.
- Susilowati, R., Sabdono, A., and Widowati, I. (2015). Isolation and characterization of bacteria associated with brown algae *Sargassum* spp. from Pangang Island and their antibacterial activities. *Basic Res. Trop. Coast. Reg. Eco. Dev.*, 23, 240–246.
- Taylor, J. R. (1982). Neurological manifestations in humans exposed to chlordecone and follow-up results. *Neurotoxicology*, 3, 9–16.
- Thabard, M., Gros, O., Hellio, C., and Maréchal, J.-P. (2011). *Sargassum polyceratium* (Phaeophyceae, Fucaceae) surface molecule activity towards fouling organisms and embryonic development of benthic species. *Bot. Mar.*, 54, 147–157.
- Thomas, A., Baptiste, A., Martyr-Koller, R., Pringle, P., and Rhiney, K. (2020). Climate change and small island developing states. *Annu. Rev. Environ. Resour.*, 45, 1–27.
- Torralba, M. G., Franks, J. S., Gomez, A., Yooseph, S., Nelson, K. E., and Grimes, D. J. (2017). Effect of Macondo prospect 252 oil on microbiota associated with pelagic *Sargassum* in the northern Gulf of Mexico. *Microb. Ecol.*, 73, 91–100.
- Torti, A., Lever, M. A., and Jorgensen, B. B. (2015). Origin, dynamics, and implications of extracellular DNA pools in marine sediments. *Mar. Genom.*, 24, 185–196.
- Tresnakova, N., Stara, A., and Velisek, J. (2021). Effects of glyphosate and its metabolite AMPA on aquatic organisms. *Appl. Sci.*, 11, article no. 9004.
- Trevethan, R. (2017). Deconstructing and assessing knowledge and awareness in public health research. *Front. Public Health*, 5, article no. 194.
- Van Bruggen, A. H. C., Finckh, M. R., He, M., Ritssema, C. J., Harkes, P., Knuth, D., and Geissen, V. (2021). Indirect effects of the herbicide glyphosate on plant, animal and human health through its effects on microbial communities. *Front. Environ. Sci.*, 9, article no. 763917.
- Van Der Loos, L. M., Eriksson, B. K., and Falcao Salles, J. (2019). The macroalgal holobiont in a changing sea. *Trends Microbiol.*, 27, 635–650.
- Van Tussenbroek, B. I., Arana, H. a. H., Rodriguez-Martinez, R. E., Espinoza-Avalos, J., Canizales-Flores, H. M., Gonzalez-Godoy, C. E., Barba-Santos, M. G., Vega-Zepeda, A., and Collado-Vides, L. (2017). Severe impacts of brown tides caused by *Sargassum* spp. on near-shore Caribbean seagrass communities. *Mar. Pollut. Bull.*, 122, 272–281.
- Vazquez, M. B., Moreno, M. V., Amodeo, M. R., and Bianchinotti, M. V. (2021). Effects of glyphosate on soil fungal communities: a field study. *Rev. Argent. Microbiol.*, 53, 349–358.
- Vera, M. S., Lagomarsino, L., Sylvester, M., Perez, G. L., Rodriguez, P., Mugni, H., Sinistro, R., Ferraro, M., Bonetto, C., Zagarese, H., and Pizarro, H. (2010). New evidences of Roundup® (glyphosate formulation) impact on the periphyton community and the water quality of freshwater ecosystems. *Ecotoxicology*, 19, 710–721.
- Walsh, G. E., Ainsworth, K., and Wilson, A. J. (1977). Toxicity and uptake of Kepone in marine unicellular algae. *Chesap. Sci.*, 16, 222–223.
- Wang, C., Lin, X., Li, L., and Lin, S. J. (2016). Differential growth responses of marine phytoplankton to herbicide glyphosate. *PLoS One*, 11(3), article no. e0151633.
- Wang, C., Sun, X. Q., Wang, J. T., Tang, J. M., Gu, Y. F., and Lin, S. J. (2022). Physiological and metabolic effects of glyphosate as the sole P source on a cosmopolitan phytoplankton and biogeochemical implications. *Sci. Total Environ.*, 832, article no. 155094.
- Wang, M. Q., Hu, C. M., Barnes, B. B., Mitchum, G., Lapointe, B., and Montoya, J. P. (2019). The great Atlantic *Sargassum* belt. *Science*, 365, 83–87.

- Weis, J. S. (1968). Fauna associated with pelagic *Sargassum* in the Gulf Stream. *Am. Nat.*, 80, 554–558.
- Wilkinson, P., Harrison, D., and Sharpley, R. (2017). *Cruise Ship Tourism in the Caribbean: the Mess of Mass Tourism*. Cabi, Wallingford.
- Wilkinson, P. F. (2006). *The Changing Geography of Cruise Tourism in the Caribbean*. Cabi, Wallingford.
- Williams, A. M. and Feagin, R. A. (2010). *Sargassum* and beach erosion: potential costs and benefits for coastal managers. Final report. Texas A&M University, Department of Ecosystem Science & Management College Station, TX.
- Witherington, B., Hirama, S., and Hardy, R. (2012). Young sea turtles of the pelagic *Sargassum*-dominated drift community: habitat use, population density, and threats. *Mar. Ecol. Prog. Ser.*, 463, 1–22.
- Woignier, T., Clostre, E., Fernandes, P., Soler, A., Ranson, L., Sastre-Conde, M. I., and Jannoyer, M. L. (2018). The pesticide chlordecone is trapped in the tortuous mesoporosity of allophane clays. *Environ. Sci. Pollut. Res.*, 25, 21350–21361.
- Wolf, F., Moncada, S., Surroop, D., Shah, K. U., Raghoo, P., Scherle, N., Reiser, D., Telesford, J. N., Roberts, S., Havea, P. H., Naidu, R., and Nguyen, L. (2022). Small island developing states, tourism and climate change. *J. Sustain. Tourism*, 30, 2121–2143.
- Wong, A. (2015). Caribbean island tourism: pathway to continued colonial servitude. *Étud. Caribb.*, 31–32, 1–17.
- Wood, R. E. (2000). Caribbean cruise tourism - globalization at sea. *Ann. Tourism Res.*, 27, 345–370.
- Zabaloy, M. C., Allegrini, M., Guijarro, K. H., Kraemer, F. B., Morras, H., and Erijman, L. (2022). Microbiomes and glyphosate biodegradation in edaphic and aquatic environments: recent issues and trends. *World J. Microbiol. Biotechnol.*, 38, article no. 98.
- Zou, K. J., Thebault, E., Lacroix, G., and Barot, S. (2016). Interactions between the green and brown food web determine ecosystem functioning. *Funct. Ecol.*, 30, 1454–1465.