



**HAL**  
open science

## Temporal Integration at thresholds at very low and infrasonic frequencies

Ossen El Sawaf, Sabine Meunier, Jacques Chatron, Emmanuel Friot, Marc Pachebat, Renaud Côte, Philippe Herzog, Guy Rabau

► **To cite this version:**

Ossen El Sawaf, Sabine Meunier, Jacques Chatron, Emmanuel Friot, Marc Pachebat, et al.. Temporal Integration at thresholds at very low and infrasonic frequencies. 10th Convention of the European Acoustics Association, European Acoustics Association, Sep 2023, Torino, Italy. hal-04288125

**HAL Id: hal-04288125**

**<https://hal.science/hal-04288125v1>**

Submitted on 15 Nov 2023

**HAL** is a multi-disciplinary open access archive for the deposit and dissemination of scientific research documents, whether they are published or not. The documents may come from teaching and research institutions in France or abroad, or from public or private research centers.

L'archive ouverte pluridisciplinaire **HAL**, est destinée au dépôt et à la diffusion de documents scientifiques de niveau recherche, publiés ou non, émanant des établissements d'enseignement et de recherche français ou étrangers, des laboratoires publics ou privés.

# Temporal Integration at thresholds at very low and infrasonic frequencies

O. El Sawaf<sup>1\*</sup> S. Meunier<sup>1</sup> J. Chatron<sup>1</sup> E. Friot<sup>1</sup>  
M. Pachebat<sup>1</sup> R. Côte<sup>1</sup> P. Herzog<sup>2</sup> G. Rabeau<sup>1</sup>

<sup>1</sup> Aix Marseille Univ, CNRS, Centrale Méditerranée, LMA UMR 7031, Marseille, France

<sup>2</sup> ARTEAC-LAB SAS, 8 allées Léon Gambetta, Place de l'Innovation (CIC), 13001 Marseille, France

## ABSTRACT

The human ear can perceive sound well below 20 Hz, i.e. infrasound, provided that the levels involved are high enough to be heard. It is also known that below a critical duration, the shorter the sounds are, the higher their intensity must be to be detected. Furthermore, this duration seems to increase with decreasing frequency. While most studies about hearing at infrasonic frequencies mention the necessity to use stimuli of sufficient length to be above the critical duration, to our knowledge only one study has actually measured the critical duration for a couple frequencies below 20 Hz and showed that at 4 Hz, the critical duration would be above 4000 ms. The presented work aims at bringing more precision to the measurement of the critical duration. In this paper, we will present the experimental setup built in order to reproduce infrasound at audible levels and the test procedure that we will use to measure the critical duration at different durations and frequencies below 63 Hz.

**Keywords:** *Hearing thresholds, Infrasound, critical duration.*

## 1. INTRODUCTION

While infrasonic frequencies are not a part of everyday communication in human, the human ear is still actually capable of hearing them and as such will still be a carrier of information. When speaking of audible sounds, infrasonic

frequencies are often not accounted for because it is not a type of sound that we are often exposed to. However, nowadays sources of infrasounds are getting more common, among other things because of the increasing size of machines, one of the most notable examples being wind turbines.

As such, several studies have aimed to study infrasound perception by measuring features such as hearing thresholds, loudness function or spectral integration ([1]–[3]). A common aspect to all those studies is the attention brought to the length of the stimuli. Indeed, it is known that the absolute threshold tends to decrease with increasing stimulus duration. The limit above which the thresholds does not decrease anymore is called the critical duration. The critical duration tends to increase with decreasing frequency as shown by Watson & Gengel [4].

However, to our knowledge, only one paper has specifically studied this aspect in infrasonic frequencies. Jurado *et al* [5] measured critical duration at 32, 16 and 4 Hz and has shown that for 32 and 16 Hz the critical duration is about 1000 ms while at 4 Hz the absolute thresholds was still decreasing for a stimulus duration of 4000 ms (which was their longest duration evaluated). Here, we will use a room designed specifically to broadcast infrasonic frequency to study temporal integration below 32 Hz.

This project is part of the French National Research Agency (ANR) funded project “RIBEOIH” which aims to assess impact of wind turbine noise on humans.

## 2. EXPERIMENTAL SETUP

### 2.1 Testing facility

Infrasonic frequencies have absolute thresholds so high that it is a difficult task to just broadcast them at sufficient levels. To do so, a specific room has been designed at the Laboratory of Mechanics and Acoustics (LMA) to reach the needed levels with minimal harmonic distortion as this

\*Corresponding author: [elsawaf@lma.cnrs-mrs.fr](mailto:elsawaf@lma.cnrs-mrs.fr)

Copyright: ©2023 First author et al. This is an open-access article distributed under the terms of the Creative Commons Attribution 3.0 Unported License, which permits unrestricted use, distribution, and reproduction in any medium, provided the original author and source are credited.

would alter measured threshold. Indeed, as shown by Møller & Pedersen [2], hearing thresholds increase very quickly with decreasing frequency below 20 Hz, as such, harmonic distortion occurring at higher frequency that the one tested will have a much lower hearing threshold and thus might be heard instead of the frequency of interest. To broadcast infrasonic frequencies the room is equipped with 32 subwoofer speakers on opposite wall (see Fig. 1) that allows to reach the needed levels to make these frequencies audible. The room is able to reach significant level with minimal distortions (i.e. distortions levels must be lower than their associated hearing thresholds) as shown in Fig. 2. A more thorough description of the room is proposed by Pachebat *et al* [6] (in French).



**Figure 1.** Picture of the room for broadcast of infrasonic frequencies. The room is equipped with 32 subwoofers speakers ( $f \leq 40$  Hz), 40 low frequency speakers ( $40 < f \leq 3000$  Hz) and 6 medium frequency speakers ( $3000 < f \leq 17000$  Hz).

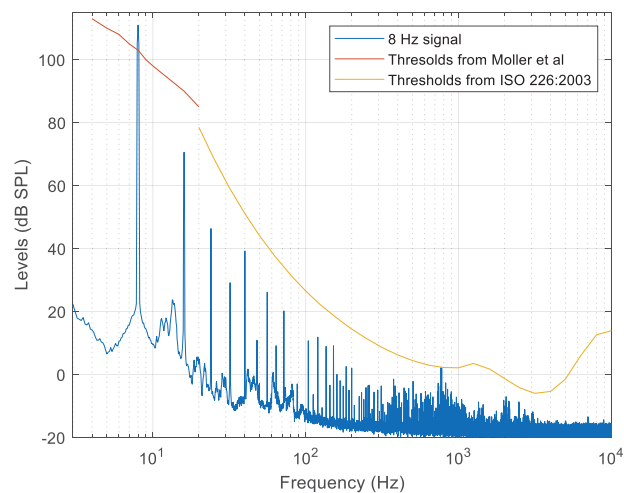
## 2.2 Listeners' hearing thresholds

To ensure that harmonic distortions will indeed not be heard by the listeners, their hearing thresholds at higher frequencies, corresponding to the harmonics, will be measured before undergoing the infrasonic thresholds measurements.

## 2.3 Test procedure

A 2-interval forced choice procedure with a 2 down-lup rule will be used to measure the absolute thresholds of frequencies at and below 63 Hz and for different duration. Based on the results of [5], a maximum duration of 1500 ms will be used for frequencies down to 16 Hz. Below that, longer durations will be used.

Starting level will be around 10 dB above the hearing thresholds for infrasounds [2]. This depend on the tested frequency as loudness has been shown to increase faster at very low frequencies [2] As such, special care will be taken to ensure starting levels not too loud for the listeners.



**Figure 2.** Example of 8 Hz signal measured in the room. A level of 111 dB (8 dB above expected threshold from [2]) is reached while all harmonics distortions' levels are below the standardized thresholds from ISO 226:2003.

## 3. RESULTS

Results will be presented at the 2023 Forum Acusticum convention.

## 4. ACKNOWLEDGEMENT

This work was supported by a grant from the French National Research Agency (ANR).

## 5. REFERENCES

- [1] B. Friedrich, H. Joost, T. Fedtke, and J. L. Verhey, « Spectral integration of infrasound at threshold »,

*The Journal of the Acoustical Society of America*,  
vol. 147, n° 3, p. EL259-EL263, March 2020, doi:  
10.1121/10.0000897.

- [2] H. Møller and C. S. Pedersen, « Hearing at low and infrasonic frequencies », *Noise Health*, vol. 6, n° 23, p. 37-57, June 2004.
- [3] C. Jurado and B. C. J. Moore, « Frequency selectivity for frequencies below 100 Hz: Comparisons with mid-frequencies », *The Journal of the Acoustical Society of America*, vol. 128, n° 6, p. 3585-3596, Dec. 2010, doi: 10.1121/1.3504657.
- [4] C. S. Watson and R. W. Gengel, « Signal Duration and Signal Frequency in Relation to Auditory Sensitivity », *The Journal of the Acoustical Society of America*, vol. 46, n° 4B, p. 989-997, oct. 1969, doi: 10.1121/1.1911819.
- [5] C. Jurado, M. Larrea, H. Patel, and T. Marquardt, « Dependency of threshold and loudness on sound duration at low and infrasonic frequencies », *The Journal of the Acoustical Society of America*, vol. 148, n° 2, p. 1030-1038, Aug 2020, doi: 10.1121/10.0001760.
- [6] M. Pachebat *et al.*, « Une cabine acoustique pour la restitution contrôlée des basses et très basses fréquences (3Hz-300Hz): qualification, identification acoustique et premier exemple de contrôle », à 16ème Congrès Français d'Acoustique, Marseille, France, avr. 2022. <https://hal-ineris.archives-ouvertes.fr/EC-MARSEILLE/hal-03599063v1>