



HAL
open science

Genomic disturbance of vitellogenin 2 (vtg2) leads to vitellin membrane deficiencies and significant mortalities at early stages of embryonic development in zebrafish (*Danio rerio*)

Özlem Yilmaz, Emmanuelle Com, Charles Pineau, Julien Bobe

► To cite this version:

Özlem Yilmaz, Emmanuelle Com, Charles Pineau, Julien Bobe. Genomic disturbance of vitellogenin 2 (vtg2) leads to vitellin membrane deficiencies and significant mortalities at early stages of embryonic development in zebrafish (*Danio rerio*). *Scientific Reports*, 2023, 13 (1), 10.1038/s41598-023-46148-2 . hal-04286427

HAL Id: hal-04286427

<https://hal.science/hal-04286427>

Submitted on 15 Nov 2023

HAL is a multi-disciplinary open access archive for the deposit and dissemination of scientific research documents, whether they are published or not. The documents may come from teaching and research institutions in France or abroad, or from public or private research centers.

L'archive ouverte pluridisciplinaire **HAL**, est destinée au dépôt et à la diffusion de documents scientifiques de niveau recherche, publiés ou non, émanant des établissements d'enseignement et de recherche français ou étrangers, des laboratoires publics ou privés.



Distributed under a Creative Commons Attribution 4.0 International License



OPEN

Genomic disturbance of vitellogenin 2 (*vtg2*) leads to vitellin membrane deficiencies and significant mortalities at early stages of embryonic development in zebrafish (*Danio rerio*)

Ozlem Yilmaz^{1✉}, Emmanuelle Com^{2,3}, Charles Pineau^{2,3} & Julien Bobe⁴

The specific functions and essentiality of type II vitellogenin (Vtg2) in early zebrafish development were investigated in this study. A *vtg2*-mutant zebrafish line was produced and effects of genomic disturbance were observed in F2 females and F3 offspring. No change in *vtg2* transcript has been detected, however, Vtg2 abundance in F2 female liver was 5×, and in 1 hpf F3 *vtg2*-mutant embryos was 3.8× less than Wt ($p < 0.05$). Fecundity was unaffected while fertilization rate was more than halved in F2 *vtg2*-mutant females ($p < 0.05$). Hatching rate was significantly higher in F3 *vtg2*-mutant embryos in comparison to Wt embryos. Survival rate declined drastically to 29% and 18% at 24 hpf and 20 dpf, respectively, in F3 *vtg2*-mutant embryos. The introduced mutation caused vitelline membrane deficiencies, significant mortalities at early embryonic stages, and morphological abnormalities in the surviving F3 *vtg2*-mutant larvae. Overrepresentation of histones, zona pellucida proteins, lectins, and protein degradation related proteins in F3 *vtg2*-mutant embryos provide evidence to impaired mechanisms involved in vitellin membrane formation. Overall findings imply a potential function of Vtg2 in acquisition of vitellin membrane integrity, among other reproductive functions, and therefore, its essentiality in early zebrafish embryo development.

Vitellogenin 2 is part of the complex zebrafish (*Danio rerio*) multiple Vtgs system which contains five type-I Vtgs (Vtg 1, 4, 5, 6, and 7), two type-II Vtgs (Vtg2 and Vtg8), and one type-III Vtg (Vtg3). These three types correspond to the spiny-rayed teleost (Acanthomorpha) Vtgs; VtgAa (type-I Vtgs), VtgAb (type-II Vtgs) and VtgC (type-III Vtgs). The linear yolk protein domain structure of complete teleost Vtgs is: NH₂-lipovitellin heavy chain (LvH)-phosvitin (Pv)-lipovitellin light chain (LvL)-beta component (Bc)-C-terminal component (Ct)-COOH^{1,2}. The type I zebrafish Vtgs and the type III Vtg (Vtg3) are incomplete lacking Bc and Ct domains and both Pv and the Bc and Ct domains, respectively, while the type II Vtgs are complete forms containing all yolk protein domains³.

The roles that different types of Vtg play in oocyte growth and maturation and in embryonic and larval development have been the target of attention for decades^{2,4}. Yolk proteins derived from VtgAa are reported to be highly susceptible to proteolytic degradation by cathepsins during oocyte maturation, yielding a pool of free amino acids (FAA) that osmotically assist oocyte hydration and acquisition of proper egg buoyancy^{5,6}, and that also serve as critical nutrients during early embryogenesis of some marine species spawning pelagic eggs^{7,8}. The major yolk protein derived from the corresponding VtgAb (LvHAb) is less susceptible to maturational proteolysis.

In zebrafish, a freshwater fish spawning demersal eggs, however, it has been demonstrated that type I Vtgs, the major contributors to yolk proteins in zebrafish eggs, are essential for early embryonic and late larval development while type III Vtg, made of Lv domains only and being the least abundant form of Vtg, is a critical

¹Norwegian Institute of Marine Research, IMR, 5392 Storebø, Norway. ²Inserm, EHESP, Irset (Institut de Recherche en Santé, Environnement et Travail) - UMR_S 1085, Univ Rennes, 35000 Rennes, France. ³CNRS, Inserm, Biosit UAR 3480 US_S 018, Protim Core Facility, Univ Rennes, 35000 Rennes, France. ⁴UR1037, Laboratory of Fish Physiology and Genomics, INRAE, Campus de Beaulieu, 35042 Rennes Cedex, France. ✉email: ozlem.yilmaz@hi.no

resource for early embryonic development⁹. These two types of Vtgs have been proven to be essentially required for the developmental competence of zebrafish eggs and/or offspring⁹. However, the contribution of type VtgII to early zebrafish development remained unknown. Therefore, the main objective of this study was to determine whether Vtg2, the predominant type II Vtg, is required for zebrafish reproduction, and to identify the specific developmental stages and processes to which it contributes significantly, by investigating the effects of genomic disturbance of its respective gene using the CRISPR/Cas9 gene-editing tool.

Results

A large deletion mutation of 2811 bp of gDNA was introduced into zebrafish *vtg2* via CRISPR/Cas9 genome editing. A schematic representation of the general strategy for CRISPR target design and application is given in Fig. 1A–C. The introduced deletion involved 1692 bp of the *vtg2* transcript, encoding 564 aa of its respective protein, and resulted in a frameshift on the ORF (Figs. 1, 2, S1 Fig). This was expected to alter the structure of the deduced LvH chain and disturb the function of the remaining domains (Pv, LvL, Bc, Ct) (Fig. 2, S1 Fig). The introduced mutation was detected by genotyping via conventional PCR screening of gDNA at each generation using combinations of primers flanking each altered target site (Fig. 1C).

Efficacy of CRISPR/Cas9 was ~54%, however, mutation transmission to subsequent generations was extremely low (0.25%) in this study. Only a single F0 male zebrafish exhibiting a mosaic mutant double band pattern was detected and used as the founder of F1, and only two heterozygous F1 male zebrafish were detected and crossed with wild type females to produce F2 generations. At this level, F2 heterozygous individuals (*vtg2*-mutant) with a single mutated *vtg2* allele (Ht; *vtg2* -/+) were crossed to produce F3 generation offspring which were ultimately subject to proteomic and phenotyping analyses (Fig. 3).

The relative expression of *vtg2* transcript in F2 generation *vtg2*-mutant female (Ht; *vtg2* -/+) liver did not differ from those of Wt female liver ($p > 0.05$). In contrast, the relative abundance of Vtg2 in liver of F2 *vtg2*-mutant

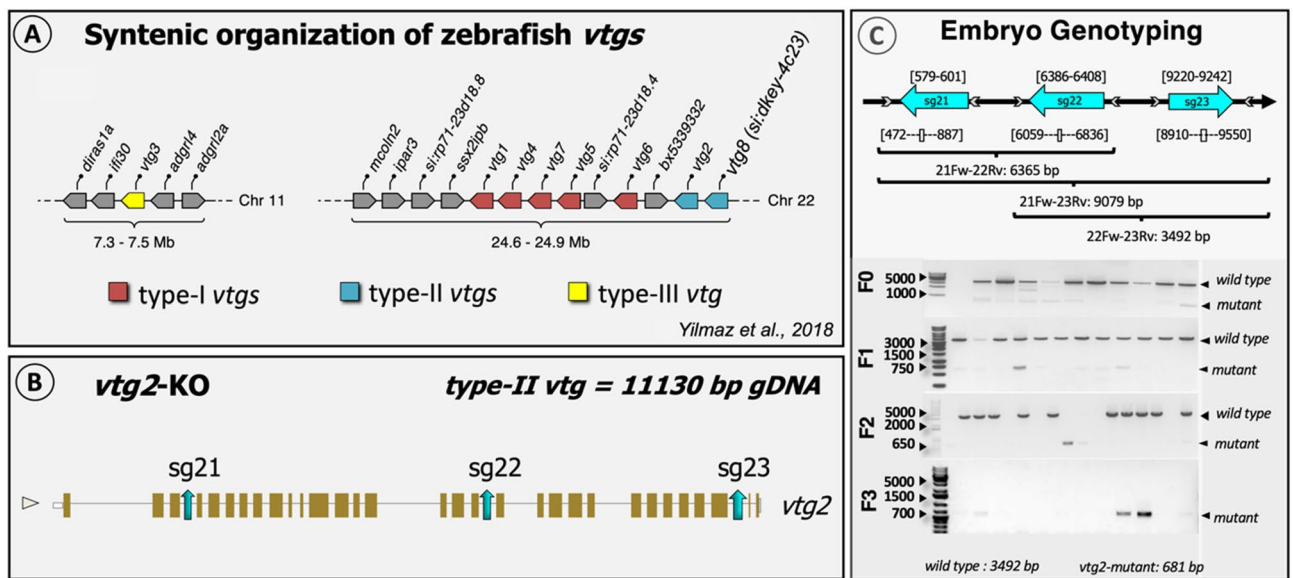


Figure 1. Schematic representation of the general strategy for CRISPR target design. (A) Syntenic organization of *vtg* genes on zebrafish genome (from³). (B) Target locations on zebrafish *vtg2* genomic structure. Target sites are shown by blue colored arrows labeled as “sg” for single guide RNA followed by 1, 2, or 3 indicating the targeted zebrafish *vtg* type and the number of the target site (i.e., sg21, sg22, and sg23). (C) Detection of CRISPR/Cas9-introduced mutation by embryo genotyping. Target sites are shown by blue colored arrows labeled as indicated for Panel B. Arrows are oriented to indicate the sense/antisense orientation of each target. Numbers above each target site specify its exact location by nucleotide in the genomic sequence of the zebrafish *vtg2*. Primers used in screening for introduced mutations by PCR are shown as grey arrowheads which are oriented to indicate the sense/antisense orientation of the primer. Numbers below each primer site indicate its exact position by nucleotide in the genomic sequence of the targeted gene (see also S1 Fig). Horizontal brackets below indicate areas screened for mutations by PCR using selected primer combinations; text below the brackets indicates the primer pair followed by the size of the band (bp) expected for wild type gDNA in agarose gel electrophoresis. 21Fw, *vtg2* target1 forward primer; 22Rv, *vtg2* target2 reverse primer; 23Rv, *vtg2* target3 reverse primer; 22Fw, *vtg2* target2 forward primer. Primer sequences are given in S3 Table. The bottom left panel illustrates genotyping of embryos at 24 h post-fertilization (hpf) by PCR for *vtg2*-mutant line, from the F0 to F3 generation. F0 indicates the generation reared from microinjected embryos and F1-3 represent offspring raised from each subsequent generation. The agarose gel electrophoresis results shown here represent screening of 10–17 randomly sampled embryos as representatives of their generations. Bands comprised of wild type intact gDNA (3492 bp) and mutated gDNA (681 bp) are shown and highlighted by black arrowheads on the right side of each panel.

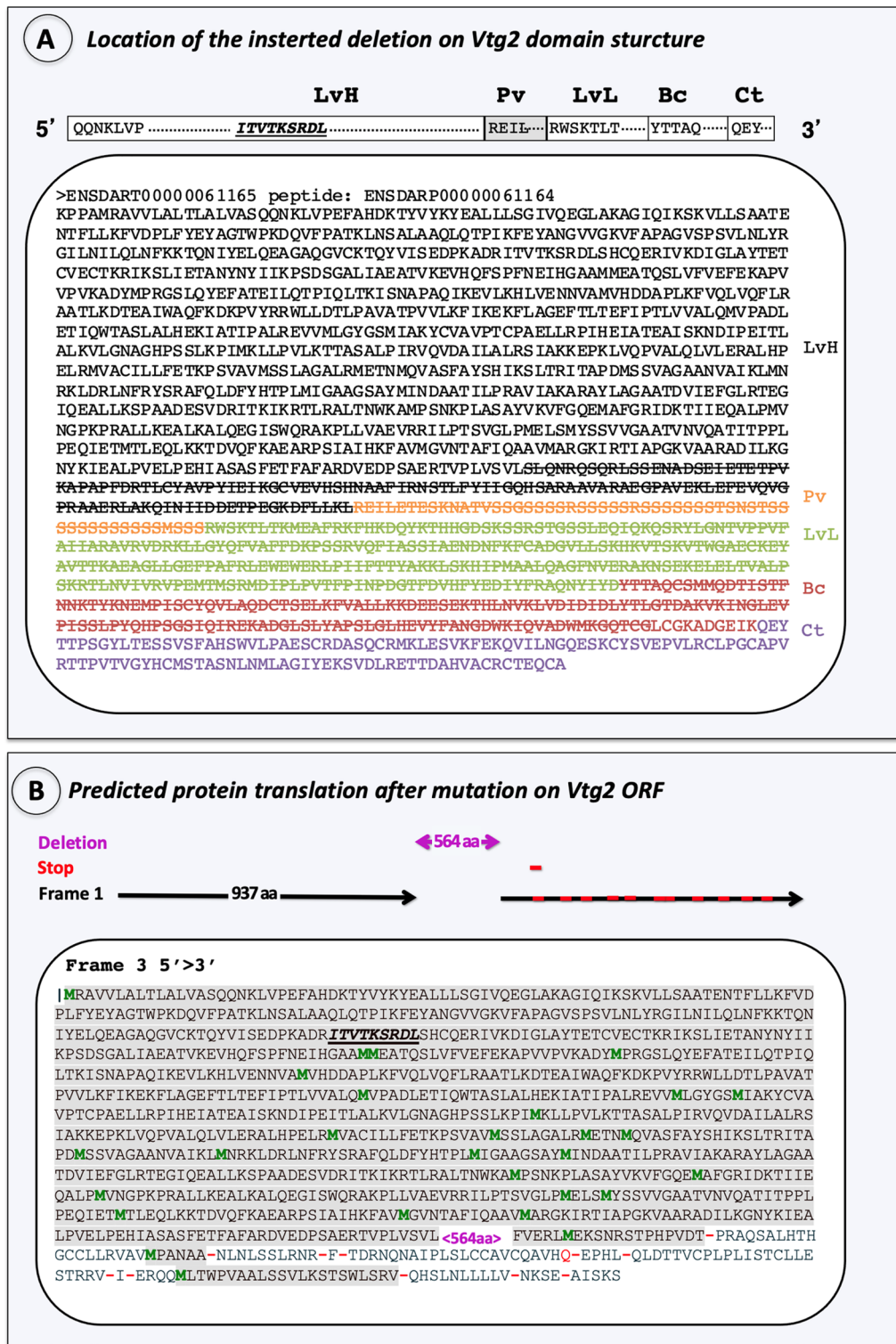


Figure 2. Characterization of the introduced mutation. (A) Location on Vtg2 polypeptide structure. The yolk protein domain structure of Vtg2 is pictured in 5' > 3' orientation above panel. Horizontal bars represent the heavy and light chain lipovitellins (LvH, LvL), phosvitin (Pv), beta component (Bc), and C-terminal (Ct) domains of the Vtg2 and are labeled above in large bold type. Sequences within these bars indicate the N-terminus of each yolk protein domain, the starting points of which are also indicated by shade color change to the polypeptide sequence shown below. Each domain is labeled to the right with the corresponding shade color. LvH: black, Pv: orange, LvL: light green, Bc: red, Ct: purple. Cas9 created mutations (large deletions) are indicated with stroked letters representing amino acid (aa) residues. (B) Frameshift caused by the introduced mutation on the Vtg2 open reading frame. A total of 973 aa which were not altered by the introduced mutation are indicated in grey shaded letters. The introduced mutation of 564 aa is indicated in magenta font set (<564 aa>). Methionine residues are shown in green font set and “stop codons” are indicated by red dashes. The receptor binding site is indicated by bold, italic and, underlined aa motif.

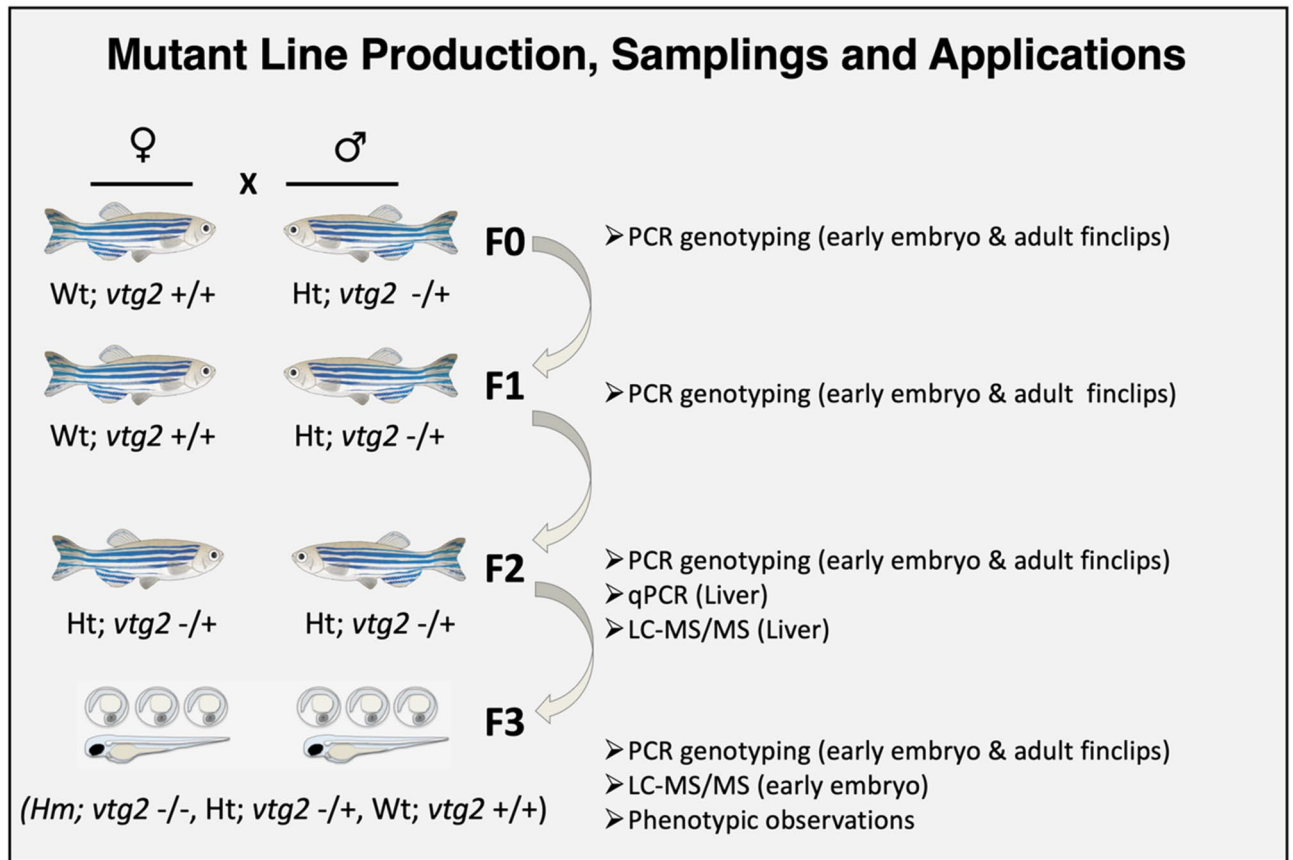


Figure 3. Production of F3 generation *vtg2*-mutants and samplings. The general strategy followed to establish zebrafish *vtg2*-mutant lines is shown above. This process involved stepwise reproductive crosses (indicated by X) between males (♂) and females (♀) indicated here with zebrafish icons. F0-3 represents the zebrafish generations produced in the process. Biological samples and the applications for which they were used are indicated on the right side of the panel. *Wt; vtg2 +/+*, wild type fish with two *vtg2* alleles, *Ht; vtg2 -/+*, heterozygous fish carrying only one *vtg2* allele, *Hm; vtg2 -/-*, homozygous fish lacking both *vtg2* alleles.

females (*vtg2*-mutant; 2.31 ± 0.65 , *Wt*; 11.6275 ± 3.31), as well as in their 1 hpf F3 *vtg2*-mutant embryos (*vtg2*-mutant; 44.405 ± 2.46 , *Wt*; 169.7675 ± 12.1), was significantly reduced in comparison to those of *Wt* ($p < 0.05$) (Fig. 4).

There were no significant differences between F2 *vtg2*-mutant (*Ht; vtg2 -/+*) and *Wt* females in the number of eggs per spawn (Fig. 5). However, the fertilization rate, hatching rate, and overall survival of F3 *vtg2*-mutant offspring were significantly different than seen in *Wt* fish ($p < 0.05$) (Fig. 5). The fertilization rate of eggs from F2 *vtg2*-mutant females ($36.95 \pm 7.0\%$) was substantially lower than those from *Wt* eggs ($81.6 \pm 5.22\%$). About 22% of the observed batches had a fertilization rate of absolute zero. About 34% of the observed batches had $< 50\%$ while the remaining 45% had $\geq 50\%$ fertilization rate. Hatching rate was significantly higher in F3 *vtg2*-mutant embryos in comparison to *Wt* embryos at 72 hpf (*vtg2*-mutant; 62.23 ± 5.6 , *Wt*; 24.8 ± 8.54) and 96 hpf (*vtg2*-mutant; 97.19 ± 1.22 , *Wt*; 70.6 ± 3.86 , $p < 0.05$) (Fig. 5). Notwithstanding, embryo and larval survival rates of F3 *vtg2*-mutant offspring were significantly less than of *Wt* offspring ($p < 0.05$), sharply decreasing to $29.3 \pm 4.4\%$ at 24 hpf, to $18.2 \pm 3.2\%$ on day 20 of the experimental period (Fig. 6). About 40% of the observed *vtg2*-mutant batches which mostly demonstrated the yolk leaking disorder from the vitellin membrane had less than 10% survival at 24 hpf, while 68% of those had $< 50\%$ survival ratio. Separate panels in Fig. 7 illustrate morphological disorders observed during development of F3 *vtg2*-mutant offspring in comparison to those from *Wt* females. Examples of yolk leakage due to vitellin membrane disintegrity and abnormal cell division are given in panels A and B. Phenotypic disorders mainly consist of pericardial and yolk sac/abdominal edema accompanied by spinal lordosis evidenced as curved or bent back deformities in *vtg2*-mutant embryos are shown in panels C and D.

When extracts of newly fertilized F3 eggs from $N = 4$ F2 *vtg2*-mutant females and $N = 4$ *Wt* females were compared in terms of their proteomic profiles via label-free LC-MS/MS, a total of $N = 365$ proteins was identified. Of these, $N = 259$ proteins were detected in at least four samples and showed a ≥ 1.0 -fold difference in normalized spectral counts (N-SC) between groups (*vtg2*-mutant versus *Wt*), or were unique to a certain group, and, on this basis, were considered to be 'differentially regulated' (S1 Table). Accordingly, proteins that were detected with lower abundance in *vtg2*-mutant embryos in comparison to *Wt* embryos were further reported as "down-regulated", and those which were detected with higher abundance in *vtg2*-mutant embryos in comparison to *Wt* embryos were further reported as "upregulated" (S1 Table). The frequency distribution of differentially regulated

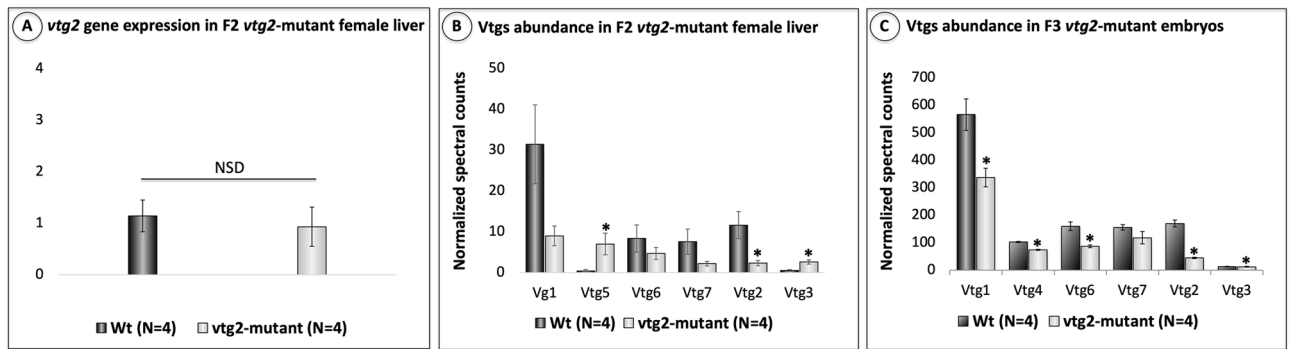


Figure 4. Relative quantification of *vtg2* gene expression in F2 *vtg2*-mutant zebrafish female liver and Vtg2 protein abundance in 1 hpf F3 *vtg2*-mutant embryos. (A) Comparison of *vtg2* gene expression levels in F2 *vtg2*-mutant (Ht; *vtg2* $-/+$) and wild type (Wt) female liver in dark and light gray vertical bars, respectively. Vertical brackets indicate SEM. SYBR Green qPCR-2 $^{-\Delta\Delta CT}$ mean relative quantification of gene expression normalized to the geometric mean expression of zebrafish elongation factor 1a (*eif1a*) and ribosomal protein L13a (*rpl13a*) was employed. Data were statistically analyzed using a Kruskal Wallis nonparametric test $p < 0.05$. (B) Relative quantification of multiple vitellogenins by LC-MS/MS in F2 *vtg2*-mutant female (Ht; *vtg2* $-/+$) liver, and (C) Relative quantification of multiple vitellogenins by LC-MS/MS in 1 hpf F3 *vtg2*-mutant embryos. Comparisons of mean normalized spectral counts for Vtg protein levels in Wt versus *vtg2*-mutants indicated by dark and light gray vertical bars, respectively. Vertical brackets indicate SEM. Statistically significant differences between group means detected by independent samples Kruskal Wallis non-parametric test ($p < 0.05$) are indicated by asterisks above bars.

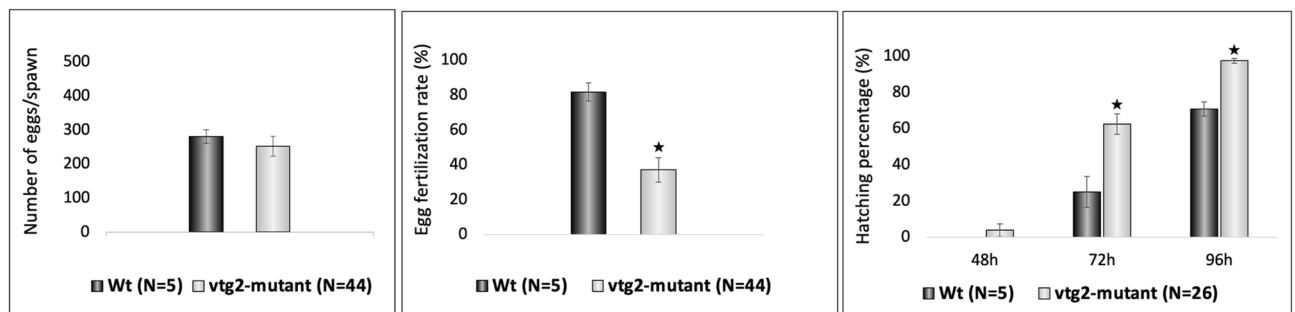


Figure 5. Phenotypic measurements of F2 *vtg2*-mutant females and their F3 progeny. Vertical bar graphs indicate mean values (\pm SEM) for measurements of (A) number of eggs per spawn in F2 *vtg2*-mutant versus wild type females, (B) egg fertilization rates in F2 *vtg2*-mutant versus wild type females, and (C) embryo hatching percentages at 48, 72 and 96 hpf in F3 *vtg2*-mutant versus wild type offspring. Labels below the x-axes indicate the groups that were compared with the number of tested batches indicated in parentheses. Black stars, in all graphs, indicate mean values that are significantly different from corresponding Wt mean values based upon results of an independent samples t-test ($p < 0.05$).

proteins among 10 functional categories significantly differed (χ^2 , $p < 0.05$) between *vtg2*-mutant and Wt embryos (Fig. 8). Frequencies of proteins related to cell cycle, division, growth and fate, protein degradation and synthesis inhibition, lectins, and zona pellucida proteins were significantly higher, whereas frequencies of proteins related to protein synthesis, lipid metabolism, and vitellogenins were significantly lower in *vtg2*-mutant embryos in comparison to Wt embryos. Individual proteins that were upregulated in *vtg2*-mutant embryos ($N = 176$, Fig. 8) were mainly related to cell cycle, division, growth and fate (40%) and lectins (23%) with the remaining categorized proteins being related to energy metabolism (10%), protein synthesis (6%), protein degradation and synthesis inhibition (5%), zona pellucida proteins (5%), redox/detox activities (3%), immune functions (3%), and Vtgs (2%). Three percent of proteins that were upregulated in *vtg2*-mutant embryos were placed in the category of 'others'. Individual proteins that were downregulated in *vtg2*-mutant embryos ($N = 83$, Fig. 8) were mainly related to cell cycle, division, growth and fate (24%), protein synthesis (22%), energy metabolism (14%), Vtgs (16%), and lectins (12%), with the remaining categorized proteins being related to redox/detox activities (6%), immune functions (4%), and lipid metabolism (2%).

When the 259 differentially regulated proteins between *vtg2*-mutant and Wt embryos were submitted separately (*vtg2*-mutant downregulated (Wt); $N = 83$, *vtg2*-mutant upregulated; $N = 176$) to a functional protein association networks analysis using the Search Tool for the Retrieval of Interacting Genes/Proteins (STRING) and the zebrafish protein database, they resolved into networks with significantly and substantially greater numbers of known and predicted interactions between proteins than would be expected of the same size lists of proteins randomly chosen from the zebrafish database (Fig. 9).

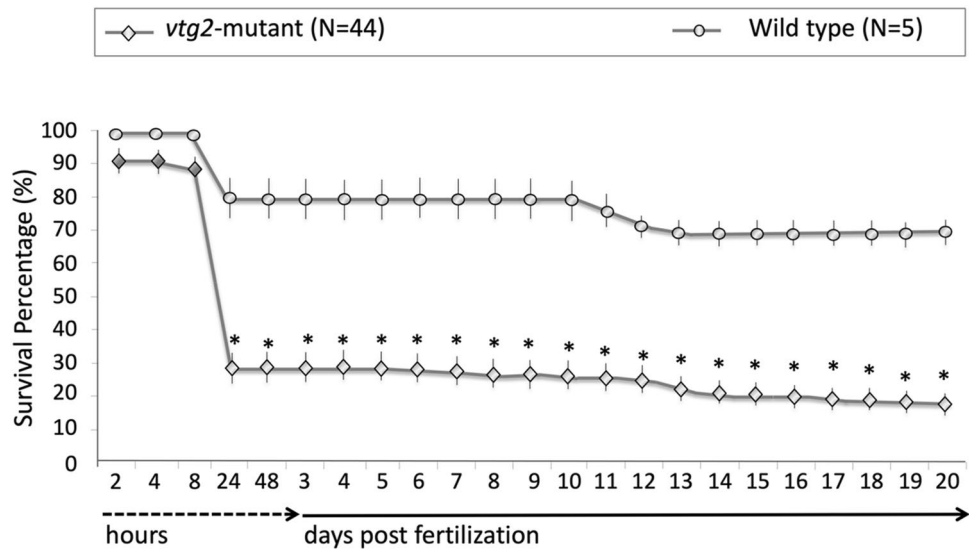


Figure 6. Comparisons of survival percentages for F3 *vtg2*-mutants versus wild type zebrafish offspring. Line plots represent mean survival percentages and numbers on the x-axis accompanied by dashed- and solid-lined arrows represent sampling times in hours or days post fertilization during the observation period. Mean survival percentages for *vtg2*-mutants and Wt embryos and larvae at each time point are indicated by diamonds and circles, respectively, and vertical lines indicate SEM. Asterisks indicate mean values that are significantly different from the corresponding mean Wt values based on results of the independent samples t-test ($p < 0.05$).

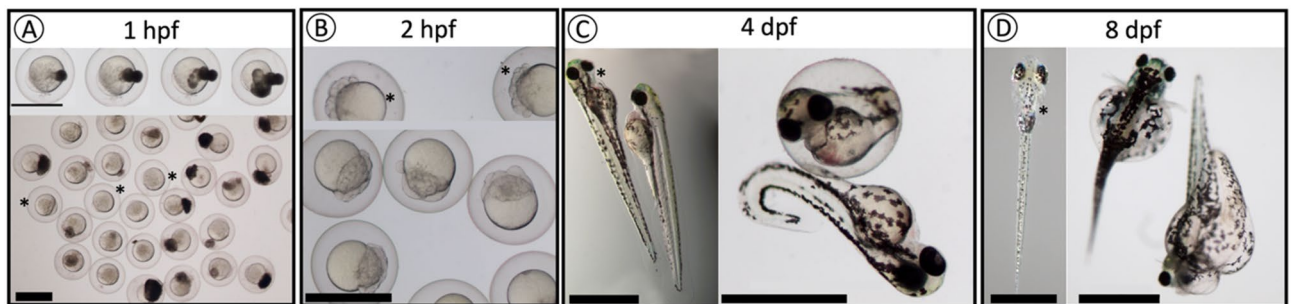


Figure 7. Observed phenotypes of F3 *vtg2*-mutant offspring compared to wild type offspring. (A) *vtg2*-mutant embryos with leaking yolk at 1 hpf. (B) *vtg2*-mutant embryos with abnormal cell division at 2 hpf. (C) Wt versus *vtg2*-mutant embryos at 4 dpf. (D) Wt versus *vtg2*-mutant embryos at 8 dpf. *Wt embryos are indicated by asterisks.

The network formed by proteins down-regulated in *vtg2*-mutant embryos (Wt; $N = 83$) is made up of a subnetwork of four Vtgs (Vtg1, Vtg2, Vtg3 and Vtg4) and another subnetwork made up proteins related to cellular homeostasis via cytoskeleton regulation, redox/detox activities, energy metabolism, and protein synthesis (protein folding and refolding activities). Cytoskeleton related proteins in this subnetwork are profilin (Pfn2), actin b1 (Actb1) and b2 (Actb2). Peroxiredoxin 1 (Prdx1), catalase (Cat), and thioredoxin (Txn) are proteins with Redox/detox functions within this subnetwork. Two forms of Enolases (Eno1a and Eno3) along with a creatinine kinase (Ckbb), a glyceraldehyde-3-phosphate dehydrogenase (Gapdh), and a triosephosphate isomerase 1a (Tpi1a) are proteins responsible for maintaining cellular energy homeostasis in this subnetwork. The eukaryotic translation elongation factor 1 alpha 1, like 1 (Eef1a1), along with two classes of heat shock proteins (Hspa, Hsp70), and a single protein disulfide-isomerase a3 (Pdia3) involved in protein folding and refolding of misfolded proteins were part of the protein synthesis cluster in this subnetwork (Fig. 9. Left Panel, PPI network enrichment value $p < 1.0e-16$).

The network formed by proteins upregulated in *vtg2*-mutant embryos (*vtg2*-mutant; $N = 176$) is made up of three major interacting subnetworks. The first subnetwork is composed of proteins that are related to cellular homeostasis via cell cycle, division, growth and faith, protein synthesis, degradation and synthesis inhibition, energy hemostasis, and redox/detox activities. Among cell cycle, division, growth, and faith proteins are actins (Acta and Actc), cofilin 1 (Cfl1), karyopherin (importin) beta 1 (Kpnb1), 5-aminoimidazole-4-carboxamide ribonucleotide formyltransferase/IMP cyclohydrolase (Atic), two forms of tyrosine 3-monooxygenase/tryptophan 5-monooxygenase activation protein, beta polypeptide (Ywhaba and Ywhabb), proliferating cell nuclear antigen (Pcna), and NME/NM23 nucleoside diphosphate kinase 2b, tandem duplicate 2 (Nme2b). Protein synthesis

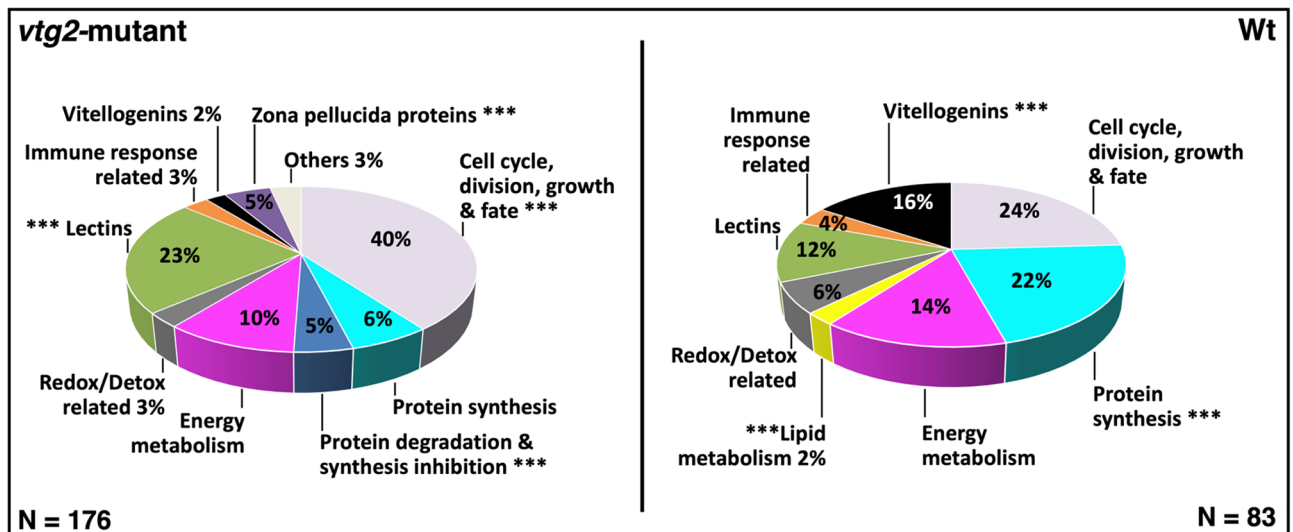


Figure 8. Percent distribution of DEPs. Distribution of differentially regulated proteins among functional categories. *Left Panel* Proteins downregulated in *vtg2*-mutant offspring (upregulated in Wt, N = 83). *Right Panel* Proteins upregulated in *vtg2*-mutant offspring (N = 176). Only proteins that were identified in > 4 biological samples and that exhibited a ≥ 1.0 -fold difference in N-SC between groups (*vtg2*-mutant versus Wt), or proteins unique to a certain group, were included in this analysis. The overall distribution of differentially regulated proteins among the functional categories significantly differed between mutant and Wt eggs (χ^2 , $p < 0.05$). Asterisks indicate significant differences between different groups in the proportion of differentially regulated proteins within a functional category (χ^2 , $p < 0.05$). The corresponding Ensembl Protein IDs and associated gene, transcript and protein names, functional categories (shown above), regulation (upregulated or downregulated in mutant compared to Wt), and fold-difference in N-SC between *vtg2*-mutant and Wt eggs for proteins included in this analysis are given in S1 Table.

cluster within this subnetwork includes translational proteins such as Eukaryotic translation elongation factors (Eef1g and Eef2b), Ribosomal protein S27a (Rps27), and folding/refolding related proteins such as Protein disulfide isomerase family A, member 4 (Pdia4), Heat shock protein 90, beta (grp94), member 1 (Hsp90b1), Heat shock 60 protein 1 (Hsp60), Peptidylprolyl isomerase Aa (cyclophilin A) (Ppiaa), and procollagen-proline, 2-oxoglutarate 4-dioxygenase (proline 4-hydroxylase), beta polypeptide (P4hb). Protein degradation and synthesis inhibition related proteins cluster includes ubiquitins which are mainly involved in response to unfolded/misfolded proteins (Uba52, Ubb, Ubc, and Uchl1), and an aspartic-type endopeptidase notheptsin (Nots). The central energy metabolism cluster of this subnetwork includes several creatine kinases (Ckba, Ckbb, Ckma, and Ckmb), lactate dehydrogenases (Ldha, Ldhab, and Ldhbb), phosphoglucosyltransferase 1 (Pgm1), malate dehydrogenase 2 (Mdh2), enolase 3 (Eno3), transketolase b (Tktb), and ATP synthase F1 subunit beta (Atp5f1b). Positioned in the center of this cluster is an unrelated protein, adenosylhomocysteinase (Ahcy), an enzyme involved in breakdown of methionine to assist DNA methylation. A group of quinoid dihydropteridine reductase b2 (Qdprb2), proteins related to redox/detox activities, and a group of type I Vtgs (Vtg5, 6, and 7) are the remaining relatively smaller clusters spotted to be formed within this subnetwork. The second subnetwork formed by proteins upregulated in *vtg2*-mutant embryos exclusively includes histones and a single histone-binding protein, nuclear autoantigenic sperm protein (Nasp). The third subnetwork includes zona pellucida proteins (ZPs), lectins, and uncharacterized proteins recognized as mucins by the STRING algorithm (Fig. 9. Right Panel, PPI network enrichment value $p < 1.0e-16$).

Functional enrichment analysis of proteins downregulated in *vtg2*-mutant embryos (S2 Table, Panel A) contributing to the identified protein-protein networks revealed the following Biological process GO-terms; Protein refolding, Chaperone cofactor-dependent protein refolding, Cellular response to unfolded protein, Protein folding, Cytolytic process, Generation of precursor metabolites and energy, Cellular response to stress, Nucleotide metabolic process, Regulation of vacuole fusion, non-autophagic, Carbohydrate metabolic process, Response to stress, Response to toxic substance. Molecular functions GO-terms for these proteins were; Protein folding chaperone, Misfolded protein binding, Nutrient reservoir activity, Unfolded protein binding, Heat shock protein binding, ATPase activity, Lipid transporter activity, Nucleoside-triphosphatase activity, 2,3-cyclic-nucleotide 3-phosphodiesterase activity, UDP-alpha-D-glucose:glucosyl-glycogenin alpha-D-glucosyltransferase activity, Glycogenin glucosyltransferase activity, Catalytic activity, Structural constituent of the postsynaptic actin cytoskeleton, Phosphopyruvate hydratase activity, Low-density lipoprotein particle binding, Carbon-oxygen lyase activity, ATP binding, Nucleotide binding, Complement binding, Purine ribonucleoside triphosphate binding, Ubiquitin protein ligase binding, and Purine ribonucleotide binding. KEGG pathways were Protein processing in endoplasmic reticulum, Spliceosome, Endocytosis, Carbon metabolism, MAPK signaling pathway, Glycolysis/Gluconeogenesis, Biosynthesis of amino acids, Salmonella infection, Starch and sucrose metabolism, Metabolic pathways.

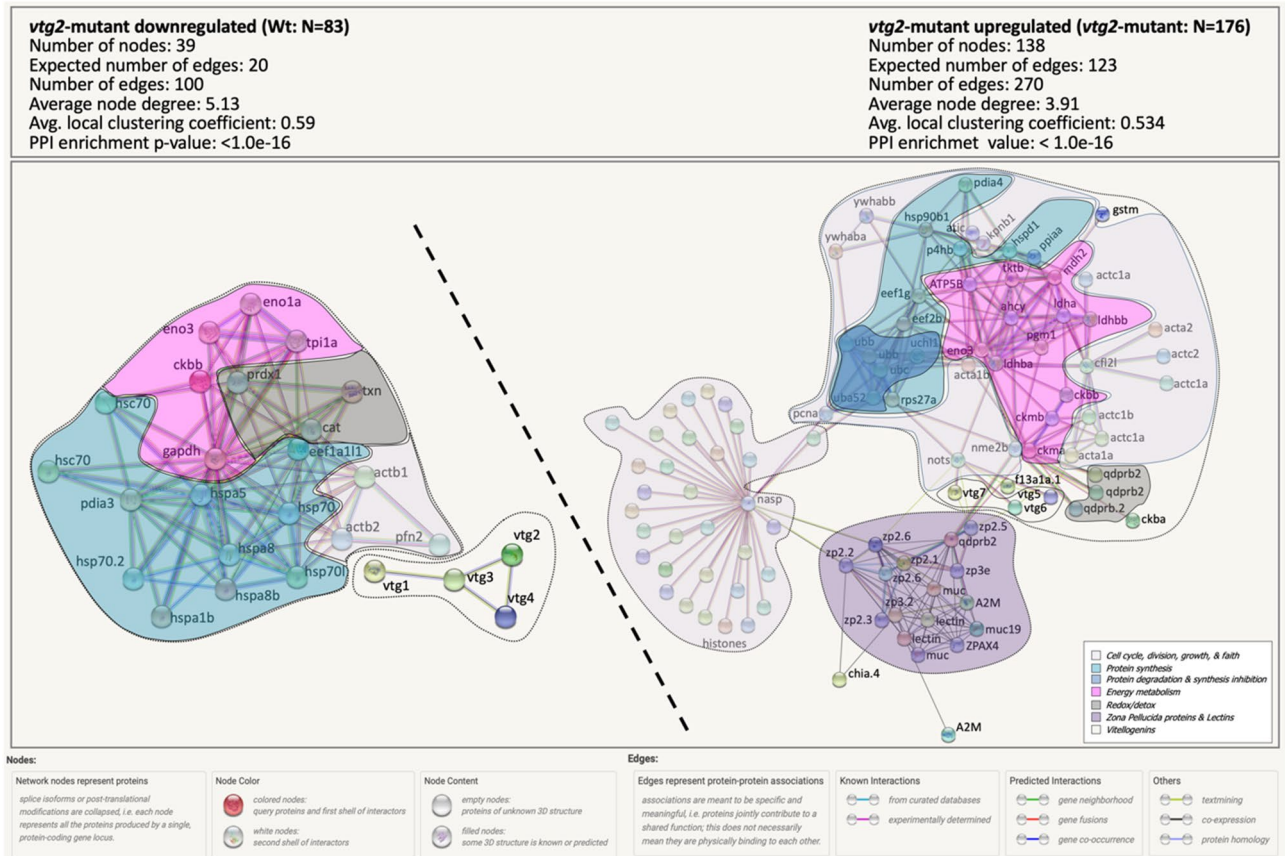


Figure 9. STRING Network Analysis of the differentially regulated proteins in *vtg2*-mutant eggs. A total of 83 proteins that were downregulated in *vtg2*-mutant eggs and 176 proteins that were upregulated in *vtg2*-mutant eggs were over-represented in specific biological pathways (S2 Table). Each network node (sphere) represents all proteins produced by a single, protein-coding gene locus (splice isoforms or post-translational modifications collapsed). Only nodes representing query proteins are shown. Nodes are named for the transcript(s) to which spectra were mapped; for full protein names, see S1 Table. Edges (colored lines) represent protein–protein associations meant to be specific and meaningful, e.g., proteins jointly contribute to a shared function but do not necessarily physically interact. Protein clusters of similar functions are framed and highlighted with the same colors of functional categories in Fig. 8. Color codes of these categories are given in the bottom left corner of the right panel. Model statistics are presented at the top left and the top right of each panel for proteins down- and up-regulated in mutant eggs, respectively. An explanation of edge colors is given below panels. The subnetwork formed by proteins downregulated in mutant eggs is shown to the upper left above the diagonal dashed line, and the subnetwork formed by proteins upregulated in mutant eggs is shown to the lower right below the diagonal dashed line. Where possible, dashed lines encircle clusters of transcripts encoding interacting proteins involved in physiological processes distinct from other such clusters.

Functional enrichment analysis of proteins upregulated in *vtg2*-mutant embryos (S2 Table. Panel B) contributing to the identified protein–protein networks revealed the following Biological process GO-terms; Nucleosome assembly, Chromosome organization, Protein-containing complex subunit organization, Mesenchyme migration, Cellular component assembly, Single fertilization, G protein-coupled receptor signaling pathway, Organelle organization, Phosphocreatine biosynthetic process, Tetrahydrobiopterin biosynthetic process, L-phenylalanine catabolic process, Cellular process, and Cell surface receptor signaling pathway. Molecular functions GO-terms for these proteins were Protein heterodimerization activity, Carbohydrate binding, Protein dimerization activity, Acrosin binding, Binding, G protein-coupled receptor activity, 6,7-dihydropteridine reductase activity, NADH binding, Protein tag, Creatine kinase activity, NADPH binding, Structural constituent of cytoskeleton, L-lactate dehydrogenase activity, Nutrient reservoir activity, DNA binding, Heterocyclic compound binding, and Organic cyclic compound binding. KEGG pathways were Gap junction, Cysteine and methionine metabolism, Arginine and proline metabolism, Phagosome, Apoptosis, Tight junction, Glycolysis/Gluconeogenesis, Cardiac muscle contraction, and Pyruvate metabolism.

Discussion

Our previous research demonstrated type I and type III Vtgs to have crucial functions during early embryo and larval development in zebrafish⁹. However, the role of type II Vtg remained to be revealed. The present research was undertaken to investigate the essentiality and functions of Vtg2 in zebrafish using complementary

methodologies such as the CRISPR/Cas9 gene knock out approach, gene expression quantification using TaqMan qPCR and protein quantification using LC-MS/MS. Accordingly, an attempt to invalidate the *vtg2* gene has been made and subsequent effects on maternal reproductive physiology and offspring development and survival were assessed.

The efficacy of CRISPR/Cas9 in this study was ~ 54% and this was a better score in comparison to *vtg1*-KO experiment (20%), where five genes were targeted concomitantly, but worse in comparison to the *vtg3*-KO experiment (80%) where only a single gene was targeted⁹. The extremely low (0.25%) mutation transmission was a serious limitation that complicated the production of subsequent generations and pure mutation line in this study. However, the presence of heterozygous males at F0 and F1 generations allowed us to continue this study with single allele contribution of F2 generation females (Ht; *vtg2* -/+), which indeed enhanced the significance of our findings. Ultimately, F3 offspring batches that were subjected to proteomic and phenotyping analyses contained a mix of homozygous (Hm; *vtg2* -/-), heterozygous (Ht; *vtg2* -/+), and wild type (Wt; *vtg2* +/+) individuals (Fig. 3). Significantly lower protein abundances of Vtg2 in F2 *vtg2*-mutant female liver and F3 generation offspring were certainly indicators of reduced functionality of *vtg2* in these heterozygous F2 females and their limited contribution of *vtg2* supplies to the F3 generation offspring. And that in fact, the phenotypic and proteomic observations made from F3 generation offspring arise from insufficient maternal Vtg2 contribution of Ht (*vtg2* -/+) F2 females to early development resources.

Even though most of it, including the receptor binding site, remained intact, by disturbing the structure of the LvH chain in *vtg2*-mutant genome via the creation of a large deletion (2811 bp, 564 aa) covering the C-terminal of the LvH polypeptide and the subsequent yolk protein domains (Pv, LvL, Bc, Ct), it is uncertain whether the mutant gene would be expressed and the protein would be synthesized, fold and transferred to the ovaries properly or not. However, qPCR and LC-MS/MS revealed limited function of *vtg2*/Vtg2 in *vtg2*-mutant individuals which is most probably resulting from the loss of a single allele in Ht; *vtg2* -/+ females. The non-significant lower gene expression of *vtg2* and significantly lower protein abundance in the liver of mutant F2 females substantiate the fact that these females are Ht; *vtg2* -/+ carrying a single *vtg2* allele. Transcripts of other types of *vtg* genes in mutant female liver were not quantified in this study. However, the Vtg2 protein levels were still detectable but significantly lower in both F2 *vtg2*-mutant female liver and in F3 *vtg2*-mutant offspring in comparison to Wt offspring. These results corroborate the reduced contribution of the Ht; *vtg2* -/+ females to Vtg2 stockpile in F3 *vtg2*-mutant offspring.

The 'genetic compensation' phenomenon which has been observed in *vtg1*- and *vtg3*-KO experiments has also been encountered in the form of a significant increase in Vtg5 and Vtg3 abundance in *vtg2*-mutant female liver in this study. However, this increase was not reflected in the Vtgs profiles of the F3 *vtg2*-mutant offspring. Protein abundance of Vtg1, 4, 6, and 3 were found to be significantly lower in F3 *vtg2*-mutant embryos. The reason for this decrease is unknown and worth further investigation. *vtg2*-mutation did not influence the number of eggs per clutch that F2 *vtg2*-mutant females spawned, however, the fertilization rate of *vtg2*-mutant eggs was only ~ 37%, less than half of that was observed in Wt eggs. Moreover, 20% of the observed F3 *vtg2*-mutant batches had absolute zero fertilization. Similar results were found in eggs from Hm *vtg3*-KO females ($35.5 \pm 7.7\%$) in our previous study⁹. In both studies, the fertilization rate was estimated conservatively, based on numbers of viable embryos showing normal cell division and subsequently developing to ~ 24 hpf. It is uncertain whether the high mortality of *vtg2*-mutant eggs at 24 hpf resulted from a failure to be fertilized or from defects in early development involving zygotes that fail to initiate cell division or that briefly undergo abnormal cell divisions and then die. The mechanism(s) whereby Vtg2 deficiency impairs fertility of zebrafish are unknown, however, Vtg2 is clearly a major contributor to fertility and/or early development in zebrafish. Interestingly, eggs from F2 *vtg2*-mutant females exhibited significantly higher embryo hatching rates at 72 and 96 hpf ($p < 0.05$) in comparison to eggs from wild type females. This unique phenomenon might well be related to over-representation/expression of ZP proteins and vitellin membrane deformities (see below). The continuous mortality of F3 *vtg2*-mutant embryos after 24 hpf leading to only ~ 18% survival at 20 dpf, suggests that Vtg2 also contributes to late embryonic and larval development, as suggested in several prior studies. Embryo and larval survival rates were severely diminished by *vtg2* disturbance. The substantial losses of *vtg2*-mutant eggs began early and less than 30% survived to 24 hps. Survival of embryos emanating from *vtg2*-mutant females decreased drastically to less than 30% at 24 hpf and further to ~ 16% thereafter, becoming significantly less than survival of Wt embryos during the experimental period. The root cause of mortalities in F3 *vtg2*-mutant offspring may be the limited Vtg2 supplies from their heterozygous mothers. It is important to note that F3 *vtg2*-mutant batches theoretically contained 50% *vtg2* -/+, 25% *vtg2* -/-, and 25% *vtg2* +/+, and *vtg2* +/- genotype could have significantly reduced Vtg2 supplies, possibly by 50%. The limited Vtg2 resources have most likely ceased to provide the necessary free amino acid supply for survival during the early embryonic developmental stage. Lack of Vtg2 derived yolk protein sources could additionally be the cause of mortalities at late embryonic and larval developmental stages. Further research on effects of genomic disruption of different types of Vtgs on the processing and utilization of Vtgs derived yolk proteins in this species is needed.

Like the *vtg1*- and *vtg3*-KO zebrafish larvae, *vtg2*-mutant survivor offspring exhibited major phenotypic disorders, mainly pericardial and yolk sac/abdominal edemas and spinal lordosis associated with curved or arched back deformities. However, those that were lost at earlier stages exhibited clear defects evidenced by leakage of the yolk throughout the vitellin membrane. *vtg2*-mutant embryos unconditionally exhibited serious and lethal developmental abnormalities. Similarities in observed phenotypes following the loss of type I, II, and III Vtgs in zebrafish might imply some commonalities in functions of these three different types of Vtgs, however, no certain evidence to that was possible to identify through our studies.

Proteomic profiles of *vtg2*-mutant embryos were significantly different from those of Wt embryos. The results of frequency distribution analysis were in agreement with those of STRING network enrichment analyses, attributing a far greater proportion of proteins to GO terms related to cell cycle, division, growth and fate, ZP

proteins, and Lectins. Most of the cell cycle, division, growth and fate related proteins were H4 histones and proteins with H4 histone domains. Histones are core proteins of the chromatin, a fundamental unit of the nucleosome, composed of DNA wrapped around these core proteins. The maturing *Xenopus* oocyte and laid egg have been reported to contain an accumulated store of nonchromatinized, predeposition histones complexed with chaperones¹⁰. Studies from Bao et al.¹¹, identify the NASP, which is in the center of the Histone H4 cluster in our STRING protein–protein network formed by proteins upregulated in *vtg2*-mutant embryos, as a major H3–H4 chaperone in histone homeostasis maintenance. The store of histones in the egg has been hypothesized to be required for the rapid cell cycles in the developing frog before the midblastula transition¹⁰. Massive dead tolls at first cell division cycles during early development in *vtg2*-mutant embryos, and concurrent overrepresentation and upregulation of histone 4 proteins in our study suggest a potential adaptive response to cope with developmental deficiencies caused by the genetic disturbance of *vtg2* in the female parent causing reduced Vtg supplies in the F3 offspring.

In addition, histones are subject to a wide range of post-translational modifications, such as acetylation, phosphorylation, and ubiquitination, that play critical roles during early embryo development¹⁰. Histone acetylation is a regulatory modification that occurs predominantly at the level of lysines in the aminoterminal tail of histones 3 and 4. It plays an important role in gene expression by altering the accessibility of DNA to proteins, such as transcription factors. In the majority of cases, genes that are undergoing transcription are hyperacetylated, and those that are repressed are deacetylated^{12–14}. Earlier studies explored changes in histone modifications and DNA methylations in relation to zona pellucida removal in mice, but only DNA methylations were reported to decline significantly at 2–4 cell stages of early embryonic development¹². Despite the lack of evidence to a link between the presence of zona pellucida and histone modifications, the high abundance and distribution of H4 histones and the parallel upregulation of zona pellucida proteins in 1 hpf *vtg2*-mutant embryos is curious and begs further investigation.

Zona radiata or zona pellucida, vitellin envelope, perivitellin envelope, is a relatively thick extracellular matrix or coat, which surrounds both invertebrate and vertebrate eggs¹⁵. In fish, the egg envelope is different in structure and has disparate functions in comparison to mammals. The eggshell in teleost eggs consists of an extremely thin, high-density outer layer and a thick, low-density inner layer, which makes up most of the structure¹⁶. Studies on localization of sea bream ZP proteins in the ZP matrix indicated the ZPX to be exclusively situated in the innermost layer, the ZPB and ZPA (ZP1 and 2) to contribute to the central portion, while the ZPC (ZP3) to be the solely constituent of the outer layer of the vitellin membrane¹⁷. According to this, upregulation of ZP1, 2, 3 in our study is somehow related to premature disintegration of the central and outmost layers of the vitellin membrane in *vtg2*-mutant embryos. Upregulation of ZP 2 and 3 proteins was also reported in poor quality zebrafish eggs¹⁸, however, the yolk leakage phenomenon has been for the first time observed in *vtg2*-mutant embryos and can be considered as evidence of these malformations.

According to Hara et al.¹⁶, the timing of eggshell formation differs by layer, and in general, the outer layer formation begins by the perinucleolar oocyte stage while the formation of the inner layer coincides with previtellogenic oocyte development. Thus, by the time of inner layer formation, the oocyte is being filled with yolk proteins derived from vitellogenins and very-low density lipoproteins carried to the oocyte by vitellogenins. Depressing of the *vtg2* function in our study might somehow have disturbed this natural sequence of events that led to disintegration of the vitellin membrane in *vtg2*-mutant embryos under insufficient Vtg provisions.

Similar to the protein profiles obtained from poor quality zebrafish eggs (1 hpf), sea urchin egg lectin (SUEL)-type and Ca²⁺-dependent (C-type) lectins were significantly elevated in number and abundance in *vtg2*-mutant embryos. Moreover, like good quality zebrafish eggs (1 hpf), fish egg lectin (FEL)-like proteins were higher in numbers and abundance in wild type embryos when compared to *vtg2*-mutant embryos in our study. C-type lectins are known to be localized at the cortical granules of fish eggs. From here they are discharged at fertilization into the perivitelline space, where they function in chorion hardening of the egg and establishing the block to polyspermy¹⁹. Overrepresentation and expression of these lectins in *vtg2*-mutant embryos indicate a contribution of the lectins into the adaptive response to maintain the integrity of the vitellin envelope.

In contrast to proteomic profiles of *vtg1*- and *vtg3*-KO embryos multifunctional endoplasmic reticulum resident redox chaperones²⁰, such as heat shock proteins (e.g., Hsp70 kDa) and protein disulfide-isomerase (Pdia3) were downregulated in *vtg2*-mutant embryos. These proteins are responsible for the correct folding and maintenance of the native protein conformation, and therefore, serve as a staminal cellular defense against general protein misfolding²¹. Downregulation of these proteins in *vtg2*-mutant embryos might indicate a failure of the cell to cope with ER stress conditions, leading to erroneous protein conformations and vitellin membrane degradation. Higher representation of proteins related to protein degradation and synthesis inhibition mechanisms in *vtg2*-mutant embryos in addition to biological processes and molecular functions revealed by functional enrichment and KEGG pathway analyses of proteins downregulated in *vtg2*-mutant embryos provide additional evidence to this conjecture.

In conclusion, this study provides a unique overview on the essentiality of *vtg2* in early embryonic development and procures empirical evidence to signatures of molecular changes and subsequent cellular dysfunctions caused by its partial genetic disturbance in zebrafish. Further research is needed if the complete disturbance effects in homozygous fish are to be pursued, however, findings of this study state unequivocally that the Vtg2 has critical requisite functions for oogenesis and embryonic and larval development in zebrafish. Findings of this study also allowed the discovery of common molecular signatures between *vtg2*-mutant, *vtg1*- and *vtg3*-KO embryos and poor quality zebrafish eggs and the establishment of the overall portrait of disparate functions of multiple Vtgs in zebrafish, providing an excellent guide to study involved mechanisms in other oviparous vertebrates.

Material and methods

Animal care

Zebrafish of the Tübingen strain originally emanating from the Nüsslein-Volhard Laboratory (Germany) were obtained from our zebrafish facility (INRA UR1037 LPGP, Rennes, France). The fish were ~15 months of age and of average length ~5.0 cm and average weight ~1.4 g. The zebrafish were housed under standard conditions of photoperiod (14 h light and 10 h dark) and temperature (28 °C) in 10 L aquaria, and were fed three times a day *ad libitum* with a commercial diet (GEMMA, Skretting, Wincham, Northwich, UK). Females were bred at weekly intervals to obtain egg batches for CRISPR sgRNA microinjection (MI). The night before spawning, paired males and females bred from different parents were separated by an opaque divider in individual aquaria equipped with marbles at the bottom as the spawning substrate. The divider was removed in the morning, with the fish left undisturbed to spawn. Egg batches in majority containing intact, clean looking, well defined, activated eggs at the 1-cell stage were immediately transferred to microinjection facilities.

Single guide RNA (sgRNA) design, synthesis and microinjection

The *vtg2* genomic sequence was submitted to online available target designer tool at <http://zifit.partners.org/ZiFiT/ChoiceMenu.aspx>^{22,23} and of the proposed candidates, three regions located on exons 4, 20 (corresponding to the LvH yolk protein domain) and 32 (corresponding to the β c yolk protein domain) were chosen as target sites for this experiment. A schematic representation of the general strategy followed for CRISPR target design is presented in Fig. 1. Forward and reverse oligonucleotides matching the chosen target sequences (given in S3 Table) were annealed and ligated to the pDR274 expression vector (Addgene). The vector was subsequently linearized by the DraI restriction digestion enzyme (Promega) and in vitro transcribed using mMessage mMachine T7 Transcription Kit (Ambion) according to instructions from the manufacturer. The pCS2-nCas9n plasmid (Addgene Plasmid 47929) was digested with Not I restriction digestion enzyme (Promega) and transcribed using mMessage mMachine SP6 Transcription Kit (Ambion) according to instructions from the manufacturer. The sgRNA concentration was measured on a Nanodrop 1000 Spectrophotometer (Thermo Scientific, USA) and integrity was tested before use using an Agilent RNA 6000 Nano Kit (Agilent) on an Agilent 2100 Bioanalyzer.

Approximately 100 eggs per batch were injected with a sgRNA mix containing sgRNAs for three target sites at ~30 ng/ul each and nCas9n RNA at ~200 ng/ul at the one-cell stage. A total of 120 pg sgRNA mix and ~800 pg Cas9 RNA was injected per embryo. Injected embryos were kept in 100 mm Petri dishes filled with embryo medium (17.1 mM NaCl, 0.4 mM KCl, 0.65 mM MgSO₄, 0.27 mM CaCl₂, 0.01 mg/L methylene blue) to assess microinjection efficiency, embryo survival, and development post injection.

Genotyping by conventional PCR

As representatives of their generation, ten embryos were sampled randomly and gDNA was extracted individually and used as a template in targeted conventional PCR reactions to screen for introduced mutations in the targeted *vtg* genes. For this purpose, embryos surviving for 24 h post-injection were incubated in 100 μ l of 5% Chelex® 100 Molecular Biology Grade Resin (BioRad) and 50 μ l of Proteinase K Solution (20 mg/ml, Ambion) initially for 2 h at 55 °C and subsequently for 10 min 99 °C with constant agitation at 12,000 rpm. Extracts were then centrifuged at 5000 xg for 10 min and supernatant containing gDNA was transferred into new tubes and stored at -20 °C until use.

To evaluate the generational transfer of introduced mutations, genotyping of ~2-month-old descendants was conducted after extraction of gDNA from fin-clips. For this purpose, fish were anesthetized in 2-phenoxyethanol (0.5 ml/L) and part of their caudal fin was excised with a sterile scalpel. Genomic DNA from fin tissues was then extracted using Chelex 5% as described above.

One μ l (~100 ng) of extracted gDNA was used in 20 μ l PCR reactions using AccuPrime™ Taq DNA Polymerase, High Fidelity (Invitrogen) and 10 \times AccuPrime™ PCR Buffer II in combination with gene specific primers (at 10 μ M each) anchoring target sites on the genomic sequence of targeted genes (Fig. 1, S3 Table). PCR cycling conditions were as follows; 1 cycle of initial denaturation at 94 °C for 2 min, 35 cycles of denaturation at 94 °C for 15–30 s, annealing at 52–64 °C for 15–30 s and extension at 68 °C for 1 min per kb plus 1 cycle of final extension at 68 °C for 5 min. Non-purified PCR products or gel-purified DNA were sequenced using gene specific primers indicated in S3 Table by the Eurofins Genomics sequencing service (<https://www.eurofinsgenomics.eu/>). Obtained sequences were aligned to corresponding zebrafish genomic sequence using Clustal Omega²⁴ for characterization and localization of introduced mutations, and then were blasted against all sequences available online using NCBI nucleotide Blast (Blastn)²⁵ for confirmation of the consistency, accuracy, and type of the mutations created at the target sites.

Generation of zebrafish mutant lines

The initial strategy to produce the pure mutant line involved crossing of adults carrying the introduced mutation from each generation to produce the next generation until the pure line is obtained. In the case of our study, due to limited availability of survivor mutants, slight changes to this strategy have been applied. A single heterozygous (Ht; *vtg2* \pm) male with the mutation on a single allele was outcrossed with wild type (Wt; *vtg2*+/+) female with no genomic disturbance to produce the F1 generation. Embryos from F1 generation were genotyped to confirm mutation transfer and remaining embryos were raised to adulthood. F1 descendants were screened again at ~2 months of age and, since mutation transmission was possible to detect in two males only, these Ht males were crossed with Wt females to produce the F2 generation. Following the same genotyping strategy, F2 Ht males were crossed with Ht females to produce the F3 generation. The low number of fish with mutations at each generation proved our attempt to produce the pure *vtg2*-KO lines unfeasible. Females from F2 generation (N = 4) and non-related wild type females (N = 4) were spawned and then euthanized with a lethal dose

of 2-phenoxyethanol (0.5 ml/L) to collect liver tissue for *vtg2* gene expression and protein quantifications. F3 *vtg2*-mutant and wild type embryo samples (N = 4 each), from the same females, were collected at 1 hpf and snap frozen to assess label free protein profiling and quantifications via LC–MS/MS.

Phenotypic observations

For phenotypic observations, Wt and F2 *vtg2*-mutant couples (N = 5 each) were spawned 1 to 8 times, respectively, and embryonic development, survival rate, hatching rate, and larval development were subsequently observed until 20 dps. Fecundity and fertilization data was collected from a total of 5 and 44 batches from Wt and F2 *vtg2*-mutant couples, respectively. Survival and hatching ratio data was collected from offspring (F3) of the same couples. Fecundity (number of eggs per spawn) was recorded immediately after spawning and collected eggs were incubated in 100 mm Petri dishes filled with embryo medium (17.1 mM NaCl, 0.4 mM KCl, 0.65 mM MgSO₄, 0.27 mM CaCl₂, 0.01 mg/L methylene blue) to assess embryonic development and phenotyping parameters. Hatching ratio was calculated based on the number of surviving embryos at 24 h and only spawns with > 5% survival rates were considered, therefore, this data was collected from 5 of Wt and 26 of *vtg2*-mutant batches, respectively. Incubated eggs/embryos were periodically observed at the early blastula (~ 256 cells) stage (~ 2–3 h post spawning hps), at mid-blastula transition stage (~ 4 hps), at the shield to 75% epiboly stages (~ 8 hps), at the early pharyngula stage (~ 24 hps), and during the hatching period at 48, 72 hps and 96 hps (long-pec to early larvae stages) following standard developmental staging²⁶. Fertilization rate was calculated based on viable embryos showing normal cell division and subsequent development to ~ 24 hpf since zygotes failing to initiate cell division, and embryos showing asymmetrical cell cleavage or early developmental arrest were dead by then. The number of surviving eggs/embryos was recorded, those not surviving were removed and the number of abnormal embryos was recorded at each observation point. Hatched embryos were transferred into larger volume containers (1 L) filled with standard 28 °C culture water and were fed ad libitum with artemia and GEMMA weaning diet mix after yolk sac absorption (at around 10 dpf). At the time of feeding, larvae were also observed for motor and feeding activities. Observations were made daily up to 20 dpf.

Quantitative real time PCR

Total RNA was extracted from frozen liver using TriReagent (SIGMA) and cDNA was synthesized using SuperScript III reverse transcriptase (Invitrogen, USA) from 1 µg of total RNA according to the manufacturer's instructions. Relative expression levels for zebrafish *vtg2* in F2 *vtg2*-mutant and wild type female liver were measured using SYBR GREEN qPCR Master Mix (SYBR Green Master Mix kit; Applied Biosystems) as indicated by the manufacturer in a total volume of 10 µl, containing RT products diluted at 1:100 and 400 nM of each primer to obtain PCR efficiency between 95 and 100%. Sequences of primers used in this experiment are given in S1 Table. The RT-qPCR cycling protocol included 3 min initial denaturation at 95 °C followed by 40 cycles of 95 °C for 3 s and 60 °C for 30 s on a StepOnePlus thermocycler (Applied Biosystem). The relative abundance of target cDNA within a sample set was calculated from a serially diluted cDNA pool (standard curve) using Applied Biosystem StepOne V.2.0 software. Similarly, the $2^{-\Delta\Delta CT}$ mean relative quantification of gene expression method with the mean expression value of zebrafish elongation factor 1a (*ef1a*) and ribosomal protein 13a (*rpl13a*) were employed as housekeeping genes in this study. Primer sequences and properties for these genes are also given in S3 Table. Obtained data was subjected to independent samples Kruskal–Wallis nonparametric test ($p < 0.05$) (IBM SPSS Statistics Version 19.0.0, Armonk, NY).

Liquid chromatography tandem mass spectrometry

Liver tissues from F2 *vtg2*-mutant and Wt females, and 1 hpf F3 embryos (N = 5 batches each) from the same females were subject to protein extraction and sample processing for LC–MS/MS as described by¹⁸ with slight changes. Concentration of extracted proteins was determined by Bradford Assay²⁷ (Bio-Rad, Marnes-la-Coquette, France). Samples of extracts were mixed with sample buffer and DTT and denatured at 70 °C for 10 min before being subjected to SDS-PAGE (60 µg protein/sample lane on NuPAGE 12% Bis–Tris Gel) for ~ 4 min at 200 V 218 mA (~ 44 W) in NuPAGE™ MES SDS Running Buffer (Thermo Fisher Scientific, Illkirch–Graffenstaden, France). When protein samples had completely penetrated the stacking gel electrophoresis was stopped and gels were briefly rinsed in MilliQ ultrapure water (Millipore S.A.S., Alsace, France) and then incubated in fixation solution containing 30% EtOH/10% acetic acid/60% MilliQ water for 15 min to fix proteins on the gel. Gels were then washed in MilliQ water and stained in EZBlue™ Gel Staining Reagent (Sigma-Aldrich, Saint-Quentin Fallavier, France) for 2 h, and de-stained in MilliQ overnight. Subsequently, protein bands were excised from the gel and processed for in-gel tryptic digestion and peptide extraction as indicated by¹⁸. Peptide extracts were resolubilized in 30 µl of 95% H₂O:5% formic acid and diluted 10 times before being injected into the LC–MS/MS system.

The LC–MS/MS system consisted of a nanoflow high-performance liquid chromatography (HPLC) (LC Packings Ultimate 3000, Thermo Fisher Scientific, Courtaboeuf, France) connected to a hybrid LTQ–Orbitrap XL spectrometer (Thermo Fisher Scientific) equipped with a nanoelectrospray ion source (New Objective), as previously described^{18,28}. Obtained MS/MS spectra were searched against a target-decoy concatenated database created from the zebrafish Ensembl proteome database (Danio rerio_Zv9, March 2015) using Mascot (Matrix Science). Protein identification, quantification by spectral counts, and spectral count normalization were conducted as described by Yilmaz et al.¹⁸. The mass spectrometry proteomics data have been deposited to the ProteomeXchange Consortium²⁹ via the PRIDE³⁰ partner repository with the dataset identifier PXD042791 (available online at <http://www.ebi.ac.uk/pride/archive/projects/PXD042791>). To detect significant differences in protein abundances based on group mean N-SC values (Wt vs. *vtg2*-mutant) an independent samples Kruskal–Wallis

nonparametric test ($p < 0.05$) followed by Benjamini–Hochberg correction for multiple tests ($p < 0.25$) was used (IBM SPSS Statistics Version 19.0.0, Armonk, NY).

Protein identification, quantification, annotation and statistics

A list with a total of 365 proteins identified in Wt and 1 hpf F3 *vtg2*-mutant embryos was filtered to exclude those detected in less than 4 biological samples and have less than 1.0 fold difference in abundance and the remaining proteins ($N = 259$) were identified using online available functional annotation tools such as Gene Ontology, Kyoto Encyclopedia of Genes and Genomes and Database for Annotation, Visualization and Integrated Discovery (DAVID)^{31–34}. These proteins were then classified into thirteen arbitrarily chosen functional categories that would account for > 90% of the proteins as originally suggested by Yilmaz et al.¹⁸. Chi square analysis with a significance level of ($p < 0.05$) was used to detect differences between groups in the distribution of differentially regulated proteins among functional categories. Proteins that were differentially regulated in 1 hpf F3 *vtg2*-mutant embryos were subjected to the additional analysis of protein–protein interaction networks³⁵ and the functional enrichment within identified interaction networks separately using the STRING Network search tool available from the STRING Consortium online at <http://string-db.org/>, with the data settings Confidence: Medium (0.40), Max Number of Interactions to Show: None/query proteins only. Only statistically significant enrichment results from this analysis ($p < 0.05$) are reported.

Ethical statement

All experiments complied with French & European regulations ensuring ‘animal welfare’ and that ‘Animals will be held in the INRA UR1037 LPGP fish facility (DDCSPP approval # B35-238-6)’. Experimental protocols involving animals were approved by the Comité Rennais d’éthique pour l’expérimentation animale (CREEA). This study is reported in accordance with ARRIVE guidelines (<https://arriveguidelines.org>).

Data availability

The mass spectrometry proteomics data have been deposited to the ProteomeXchange Consortium²⁹ via the PRIDE³⁰ partner repository with the dataset identifier PXD042791.

Received: 9 August 2023; Accepted: 27 October 2023

Published online: 01 November 2023

References

- Patiño, R. & Sullivan, C. V. Ovarian follicle growth, maturation and ovulation in teleost fish. *Fish Physiol. Biochem.* **26**, 57–70. <https://doi.org/10.1023/A:1023311613987> (2002).
- Hiramatsu, N., Cheek, A. O., Sullivan, C. V., Matsubara, T. & Hara, A. Chapter 16: Vitellogenesis and endocrine disruption. In *Biochemistry and Molecular Biology of Fishes, Environmental Toxicology* Vol. 6 (eds Mommsen, T. P. & Moon, T.) 431–471 (562) (Elsevier Science Press, 2005).
- Yilmaz, O., Patinote, A., Nguyen, T. & Bobe, J. Multiple vitellogenins in zebrafish (*Danio rerio*): quantitative inventory of genes, transcripts and proteins, and relation to egg quality. *Fish Physiol. Biochem.* **44**, 1509–1525. <https://doi.org/10.1007/s10695-018-0524-y> (2018).
- Sullivan, C. V. & Yilmaz, O. Vitellogenesis and yolk proteins, fish. In *Encyclopedia of Reproduction* 2nd edn (ed. Skinner, M. K.) 266–277 (Academic Press, 2018). <https://doi.org/10.1016/B978-0-12-809633-8.20567-0>.
- Matsubara, T., Ohkubo, N., Andoh, T., Sullivan, C. V. & Hara, A. Two forms of vitellogenin, yielding two distinct lipovitellins, play different roles during oocyte maturation and early development of barfin flounder, *Verasper moseri*, a marine teleost spawning pelagic eggs. *Dev. Biol.* **213**, 18–32. <https://doi.org/10.1006/dbio.1999.9365> (1999).
- Finn, R. N. & Kristoffersen, B. A. Vertebrate vitellogenin gene duplication in relation to the “3R hypothesis”: Correlation to the pelagic egg and the oceanic radiation of teleosts. *PLoS One.* **2**(1), e169. <https://doi.org/10.1371/journal.pone.0000169> (2007).
- Thorsen, A. & Fyhn, H. J. Final oocyte maturation in vivo and in vitro in marine fishes with pelagic eggs; yolk protein hydrolysis and free amino acid content. *J. Fish Biol.* **48**, 1195–1209. <https://doi.org/10.1111/j.1095-8649.1996.tb01814.x> (1996).
- Finn, R. N. & Fyhn, H. J. Requirement for amino acids in ontogeny of fish. *Aquac. Res.* **41**, 684–716. <https://doi.org/10.1111/j.1365-2109.2009.02220.x> (2010).
- Yilmaz, O. et al. Genome editing reveals reproductive and developmental dependencies on specific types of vitellogenin in zebrafish (*Danio rerio*). *Mol. Reprod. Dev.* **86**(9), 1168–88. <https://doi.org/10.1002/mrd.23231> (2019).
- Shechter, D. et al. Analysis of histones in *Xenopus laevis*. I. A distinct index of enriched variants and modifications exists in each cell type and is remodeled during developmental transitions. *J. Biol. Chem.* **284**(2), 1064–74. <https://doi.org/10.1074/jbc.M807273200> (2009).
- Bao, H. et al. NASP maintains histone H3–H4 homeostasis through two distinct H3 binding modes. *Nucleic Acids Res.* **50**(9), 5349–5368. <https://doi.org/10.1093/nar/gkac303> (2022).
- Ribas, R. C. et al. Effect of zona pellucida removal on DNA methylation in early mouse embryos. *Biol. Reprod.* **74**(2), 307–13. <https://doi.org/10.1095/biolreprod.105.046284> (2006).
- Waghmare, S. G. et al. Histone acetylation dynamics during in vivo and in vitro oocyte aging in common carp *Cyprinus carpio*. *Int. J. Mol. Sci.* **22**(11), 6036. <https://doi.org/10.3390/ijms22116036> (2021).
- Kurdistani, S. K. & Grunstein, M. Histone acetylation and deacetylation in yeast. *Nat. Rev. Mol. Cell Biol.* **4**, 276–284. <https://doi.org/10.1038/nrm1075> (2003).
- Litscher, E. S. & Wassarman, P. M. Egg extracellular coat proteins: From fish to mammals. *Histol. Histopathol.* **22**, 337–347. <https://doi.org/10.14670/HH-22.337> (2007).
- Hara, A., Hiramatsu, N. & Fujita, T. Vitellogenesis and choriogenesis in fishes. *Fish. Sci.* **82**, 187–202. <https://doi.org/10.1007/s12562-015-0957-5> (2016).
- Modig, C., Raldúa, D., Cerdá, J. & Olsson, P.-E. Analysis of vitelline envelope synthesis and composition during early oocyte development in gilthead seabream (*Sparus aurata*). *Mol. Rep. Dev.* **75**, 1351–1360. <https://doi.org/10.1002/mrd.20876> (2008).
- Yilmaz, O. et al. Scrambled eggs: Proteomic portraits and novel biomarkers of egg quality in zebrafish (*Danio rerio*). *PLoS ONE* **12**, e0188084. <https://doi.org/10.1371/journal.pone.0188084> (2017).

19. Dong, C.-H., Yang, S.-T., Yang, Z.-A., Zhang, L. & Gui, J.-F. A C-type lectin associated and translocated with cortical granules during oocyte maturation and egg fertilization in fish. *Dev. Biol.* **265**, 341–354. <https://doi.org/10.1016/j.ydbio.2003.08.028> (2004).
20. Stacchiotti, A. Exploring cellular stress response and chaperones. *Cells* **8**(5), 408. <https://doi.org/10.3390/cells8050408> (2019).
21. Wilkinson, B. & Gilbert, H. F. Protein disulfide isomerase. *Biochim. Biophys. Acta.* **1699**(1–2), 35–44. <https://doi.org/10.1016/j.bbapap.2004.02.017> (2004).
22. Sander, J. D., Zaback, P. Z., Joung, J. K., Voytas, D. F. & Dobbs, D. Zinc finger targeter (ZiFiT): an engineered zinc finger/target site design tool. *Nucleic Acids Res.* **35**, W599–605. <https://doi.org/10.1093/nar/gkm349> (2007).
23. Sander, J. D. *et al.* ZiFiT (zinc finger targeter): an updated zinc finger engineering tool. *Nucleic Acids Res.* **38**, W462–468. <https://doi.org/10.1093/nar/gkq319> (2010).
24. Sievers, F. *et al.* Fast, scalable generation of high quality protein multiple sequence alignments using clustal omega. *Mol. Syst. Biol.* **7**(5), 39. <https://doi.org/10.1038/msb.2011.75> (2011).
25. Altschul, S. F., Gish, W., Miller, W., Myers, E. W. & Lipman, D. J. Basic local alignment search tool. *J. Mol. Biol.* **215**, 403–410. [https://doi.org/10.1016/S0022-2836\(05\)80360-2](https://doi.org/10.1016/S0022-2836(05)80360-2) (1990).
26. Kimmel, C. B., Ballard, W. W., Kimmel, S. R., Ullmann, B. & Schilling, T. Stages of embryonic development of the zebrafish. *Dev. Dyn.* **203**, 253–310. <https://doi.org/10.1002/aja.1002030302> (1995).
27. Bradford, M. M. A rapid and sensitive method for the quantitation of microgram quantities of protein utilizing the principle of protein-dye binding. *Analyt. Biochem.* **72**, 248–254. <https://doi.org/10.1006/abio.1976.9999> (1976).
28. Lavigne, R. *et al.* Direct iterative protein profiling (DIPP)-an innovative method for large-scale protein detection applied to budding yeast mitosis. *Mol. Cell. Proteom.* **11**, M111–012682 (2012).
29. Deutsch, E. W. *et al.* The proteomexchange consortium at 10 years: 2023 update. *Nucleic Acids Res.* **51**(D1), D1539–D1548. <https://doi.org/10.1093/nar/gkac1040> (2023).
30. Perez-Riverol, Y. *et al.* The PRIDE database resources in 2022: A Hub for mass spectrometry-based proteomics evidences. *Nucleic Acids Res.* **50**(D1), D543–D552. <https://doi.org/10.1093/nar/gkab1038> (2022).
31. Huang, D. W., Sherman, B. T. & Lempicki, R. A. Systematic and integrative analysis of large gene lists using DAVID bioinformatics resources. *Nat. Protoc.* **4**(1), 44–57. <https://doi.org/10.1038/nprot.2008.211> (2009).
32. Huang, D. W., Sherman, B. T. & Lempicki, R. A. Bioinformatics enrichment tools: paths toward the comprehensive functional analysis of large gene lists. *Nucleic Acids Res.* **37**(1), 1–13. <https://doi.org/10.1093/nar/gkn923> (2009).
33. Kanehisa, M. & Goto, S. KEGG: Kyoto encyclopedia of genes and genomes. *Nucleic Acids Res.* **28**(1), 27–30. <https://doi.org/10.1093/nar/28.1.27> (2000).
34. Kanehisa, M. Toward understanding the origin and evolution of cellular organisms. *Protein Sci.* **28**(11), 1947–1951. <https://doi.org/10.1002/pro.3715> (2019).
35. Szklarczyk, D. *et al.* STRING v10: protein-protein interaction networks, integrated over the tree of life. *Nucleic Acids Res.* **43**(D1), D447–D452. <https://doi.org/10.1093/nar/gku1003> (2015).

Acknowledgements

The authors thank Dr. Amaury Herpin for his advice on guide RNA selection, Dr. Rolf Brudvik Edvardsen for his advice on genotyping strategies, Amélie Patinote and the INRAE ISC-LPGP staff for fish breeding. Protim Core Facility was supported by structural grants from Infrastructures en Biologie Santé et Agronomie (IBiSA), Conseil Régional de Bretagne (through Biogenouest), European Regional Development Fund, Rennes Métropole and University of Rennes (through Biosit). This study was supported by FP7 People 2013-Marie-Curie Actions-Intra-European Fellowships (FP7-PEOPLE-2013-MC-IEF), Grant/Award Number: 626272; Region Bretagne in France-(SAD-2013), Grant/Award Number: 13009218; and Agence Nationale de Recherches, Grant/Award Number: ANR-13-BSV7-0015.

Author contributions

O.Y., J.B., and C.P. designed the experiments. O.Y. and E.C. performed experiments. O.Y. wrote the manuscript with consultation from all authors. All authors read and approved the final manuscript.

Competing interests

The authors declare no competing interests.

Additional information

Supplementary Information The online version contains supplementary material available at <https://doi.org/10.1038/s41598-023-46148-2>.

Correspondence and requests for materials should be addressed to O.Y.

Reprints and permissions information is available at www.nature.com/reprints.

Publisher's note Springer Nature remains neutral with regard to jurisdictional claims in published maps and institutional affiliations.



Open Access This article is licensed under a Creative Commons Attribution 4.0 International License, which permits use, sharing, adaptation, distribution and reproduction in any medium or format, as long as you give appropriate credit to the original author(s) and the source, provide a link to the Creative Commons licence, and indicate if changes were made. The images or other third party material in this article are included in the article's Creative Commons licence, unless indicated otherwise in a credit line to the material. If material is not included in the article's Creative Commons licence and your intended use is not permitted by statutory regulation or exceeds the permitted use, you will need to obtain permission directly from the copyright holder. To view a copy of this licence, visit <http://creativecommons.org/licenses/by/4.0/>.

© The Author(s) 2023