



HAL
open science

Cognitive tasks and combined statistical methods to evaluate, model, and predict mental workload

Lina-Estelle Linelle Louis, Saïd Moussaoui, Aurélien van Langenhove, Sébastien Ravoux, Thomas Le Jan, Vincent Roualdes, Isabelle Milleville-Pennel

► To cite this version:

Lina-Estelle Linelle Louis, Saïd Moussaoui, Aurélien van Langenhove, Sébastien Ravoux, Thomas Le Jan, et al.. Cognitive tasks and combined statistical methods to evaluate, model, and predict mental workload. *Frontiers in Psychology*, 2023, 14, pp.1122793. 10.3389/fpsyg.2023.1122793. hal-04285301

HAL Id: hal-04285301

<https://hal.science/hal-04285301v1>

Submitted on 15 Nov 2023

HAL is a multi-disciplinary open access archive for the deposit and dissemination of scientific research documents, whether they are published or not. The documents may come from teaching and research institutions in France or abroad, or from public or private research centers.

L'archive ouverte pluridisciplinaire **HAL**, est destinée au dépôt et à la diffusion de documents scientifiques de niveau recherche, publiés ou non, émanant des établissements d'enseignement et de recherche français ou étrangers, des laboratoires publics ou privés.

Cognitive tasks and combined statistical methods to evaluate, model, and predict mental workload

L.E., Louis^{1,2}, S., Moussaoui², A., Van Langenhove³, S. Ravoux¹, T., Le Jan^{1,2}, V., Roualdes³, I., Milleville-Pennel²

1 *Entreprise onepoint, 3 rue Lavoisier, 44100 Nantes, France*

2 *Nantes Université, École Centrale Nantes, CNRS, LS2N, UMR 6004, Nantes, F-44000, France*

3 *Department of Neurosurgery, CHU (Centre Hospitalier et Universitaire) Nord Laënnec, Nantes Saint-Herblain, France*

* **Correspondence:** Lina-Estelle “Linelle” Louis

linaestelle.louis@gmail.com

ARTICLE INFO

Keywords:

Mental workload, NASA-TLX, Workload Profile (WP), Cognitive tasks, Performances, K-means clustering, Linear Discriminant Analysis (LDA), Permutation Feature Importance (PFI).

Number of words: 12638

Number of figures: 10

Number of tables: 2

ABSTRACT

Mental workload (MWL) is a concept used as a reference for assessing the mental cost of activities. Nowadays, challenges related to user experience are determining the expected MWL value for a given activity and real-time adaptation of task complexity level to achieve or maintain desired MWL. As a consequence, it is important to have at least one task that can reliably predict the MWL level associated with a given complexity level. We used several cognitive tasks to meet this need, including the N-Back task, commonly used reference test in the MWL literature, and the Corsi test. Tasks were adapted to generate different MWL classes measured via NASA-TLX and Workload Profile questionnaires. Our first objective was to identify which tasks had the most distinct MWL classes based on combined statistical methods. Our results indicated that the Corsi test satisfied our first objective, obtaining three distinct MWL classes associated with three complexity levels offering therefore a reliable model (about 80% accuracy) to predicted MWL classes.

Regarding our second objective to achieve or maintain the desired MWL, it entailed the use of an algorithm to adapt the MWL class based on an accurate prediction model. This model needed to be based on objective and real time indicator of MWL. For this purpose, we identified different performance criteria for each task. The classification models obtained indicated that only the Corsi test would be a good candidate for this aim (more than 50% accuracy compared to a chance level at 33%) but performances were not sufficient to consider identifying and adapting the MWL class online with sufficient accuracy during a task. Thus, performance indicators require to be complemented by other types of measures like physiological ones.

Finally, we could highlight the limitations of the N-back task in favor of the Corsi test which turned out to be the best candidate to model and predict the MWL among several cognitive tasks.

Introduction

Conceptual framework of mental workload

Mental workload (MWL) was first introduced by Bornemann (1942) aiming at optimizing human-machine systems. Since then, several definitions of MWL have been proposed. Nevertheless, all definitions concur to consider MWL as a *multidimensional concept* (Hancock et al. 2021).

55 According to *stress/strain* model (Karasek, 1979; Sperandio, 1988; Schlegel, 1993; Raufaste et al., 2004) MWL includes two components: *stress* (task demands) and *strain* (consequences of stress on the individual). The relevance of this approach that emphasizes task demands remains evident in the current international standard on MWL (ISO 1075-1:2017), which also adopts the *stress/strain* model.

60 Furthermore, MWL is a relative concept considering it depends upon the task's demands in relation to the amount of resources the operator is willing or able to allocate and process (Meijman and O'Hanlon, 1984; De Waard, 1996). *Able to allocate* given that mental resources have a limited capacity. The Multiple Resource Theory (MRT) proposed by Wickens (1984, 1987, 2008) suggests that there exist multiple pools of attentional resources that reach a threshold when demands exceed the resource pool. Consequently, working memory, for instance, can only process a limited amount of information at any given time as argued by Information Theory (Shannon and Weaver, 1949). This principle is also behind the Cognitive Load Theory (CLT; Sweller, 1988) which focuses on how intrinsic (IL - associated with the learning task itself), extraneous (EL- non-essential load mostly related to task instructions) and germane (GL - imposed by the learner's deliberate use of cognitive strategies for learning) loads impact the working memory of a learner (Sweller, 1988; Van Merriënboer and Sweller, 2010; Leppink et al., 2014; Young and Sewell, 2015; Orru and Longo, 2019; Young et al., 2021). Sweller (2010) re-conceptualized the CLT by introducing the concept of element interactivity. *Elements* refer to the learning content that can be processed either independently in working memory (like a word list to memorize) or simultaneously (like elements in a mathematical equation). This determines the interactivity level between the elements. Additionally, GL is the extra effort required for learning (schema construction). However, for GL to be effective, sufficient working memory must be available. If not, the EL can be reduced (such as by grouping words by meaning). In contrast, IL remains constant for a specific level of expertise. Therefore, GL is related to IL, which depends on the degree of interactivity of the task item, and to EL, which should not be high to make space for GL.

75 MWL and cognitive load are related concepts since they show common theoretical frameworks (such as Memory model of Atkinson and Shiffrin, 1968; Information Theory, Shannon and Weaver, 1949) that are reflected through common measurement types such as performances and questionnaires. Moreover, some explanative dimensions looked into through questionnaires appear common between the MWL and cognitive load models (Naismith et al., 2015). Thus, they show similar challenges when measured. Consequently, our discussion could also concern cognitive load. Yet, CLT has been developed with the aim to bring explanatory model to a specific study domain, the learning one. In our research, we aim to decontextualize from any situation in order to adapt to multiple contexts. The MWL, which is derived from several conceptual models that are not necessarily attached to an application domain, becomes therefore more appropriate. For this reason, this research is not on CLT, but on MWL assessment and prediction.

90 In conclusion, the conceptual framework of MWL can be considered as follows (**Figure 1**): an individual is influenced by internal (endogenous) and external (exogenous) factors, when she/he performs an activity. The inputs of this activity are then processed according to these factors, which can have an impact on performance. Indeed, some authors (Hart and Staveland, 1988; Spérandio, 1989; De Waard, 1996; Young et al., 2015) built a link between task demands, MWL and performance. In turn, performance influences Human's perception on what she/he is expected to do, using strategies, effort, and expending resources in order to accomplish the task objectives (Hart and Staveland, 1988). Moreover, Human's perception has an impact on subjective experience and physiological consequences (Wickens et al., 2015; Young et al., 2015). And finally, we can observe a loop with internal factors like subjective experience which can increase or decrease the motivation of the individual.

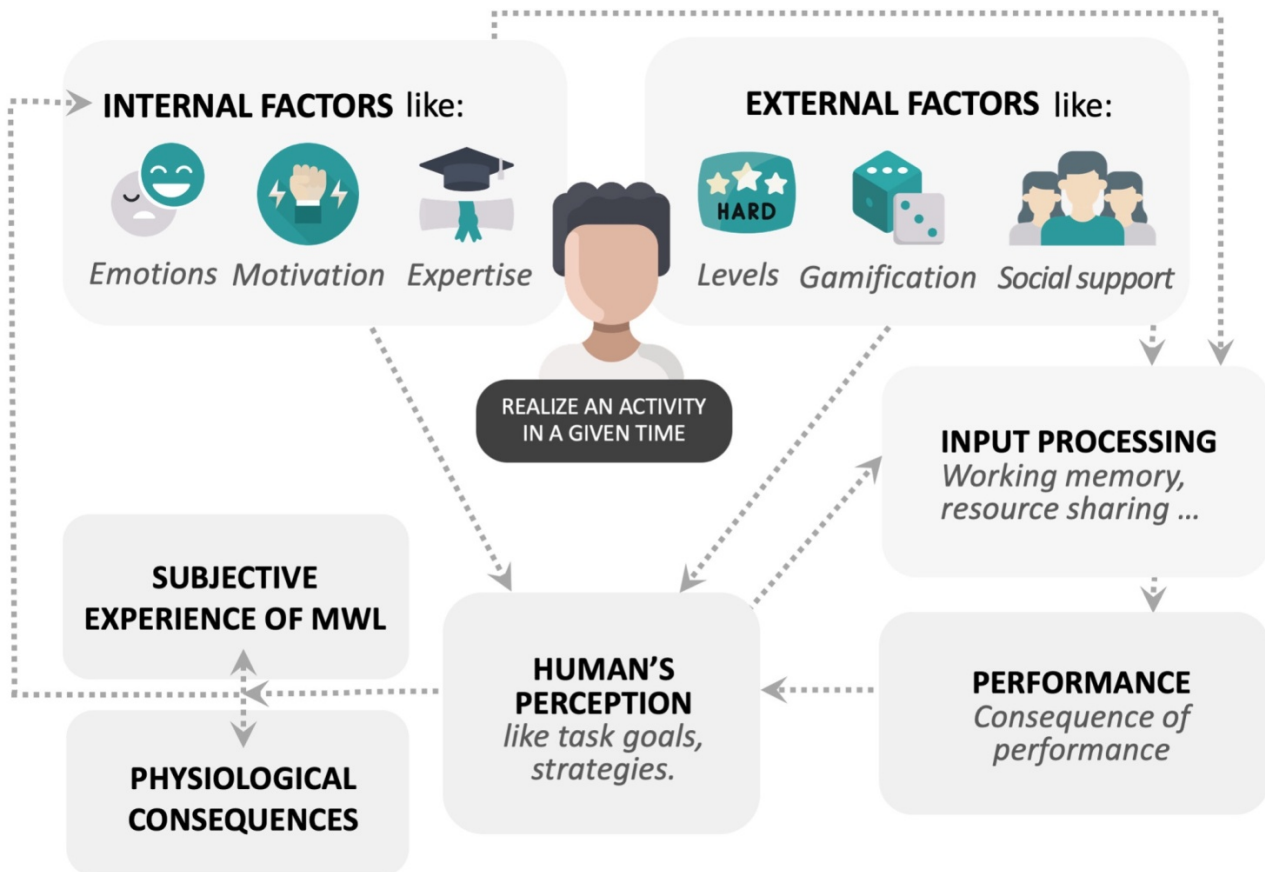


Figure 1: Conceptual framework of the mental workload's factors

105 If an individual is faced with a situation that increases demands, she/he activates additional mental resources, which will result in higher levels of MWL (Dimitrakopoulos et al., 2017). She/he shifts from a given MWL level to a higher level. Several authors (De Waard, 1996; Young et al., 2015; Martin et al., 2019) proposed three MWL levels. First, the mental underload, which according to Young et al. (2015), is an excessive stimulation leading to underload as resources are either allocated elsewhere or reduced by underuse. Then, an intermediate MWL which is considered as a “comfort zone” where performance is optimal (Dehais et al., 2020). Finally, the mental overload occurring when the operator faces more stimuli than she/he is able to handle while preserving her/his own performance standards (Young et al., 2015).

115 Finally, based on the definition proposed by Longo et al. (2022), which has emerged from hundreds of definitions, we considered mental workload as “the degree of activation of a finite pool of resources, limited in capacity, while cognitively processing a primary task over time, mediated by external dynamic environmental and situational factors, as well as affected by definite internal characteristics of a human operator, for coping with static task demands, by devoted effort and attention.” Therefore, for the continuation of this paper, we will base ourselves on this MWL definition.

Application areas of mental workload

125 Due to its features, MWL is an indicator of the mental cost related to an activity. Consequently, it is often measured during the activity and/or after the activity. Nowadays, MWL is mostly considered through operational situations such as automotive contexts (Milleville-Pennel and Charron, 2015; Foy and Chapman, 2018; Figalová et al., 2022) or aeronautic contexts like air traffic control (Averty

et al., 2004; Mélan and Cascino, 2014; Li et al., 2022). Thus, MWL is usually measured as a consequence of the activity without any a priori certainty of the MWL value in which the person is when performing the task. However, in some clinical or research contexts, it seems useful to be able to predict the MWL level before the activity. For example, in rehabilitation, technologies like Brain Computer Interface (BCI) allow to follow the cerebral activity during the achievement of cognitive tasks (Curran and Strokes, 2003; Carelli et al., 2017). In this case, the complexity level of the activity needs to be adapted to ensure the MWL is suitable for effective medical care. Thus, it is necessary to start with a known task in order to induce a certain MWL level, then, to monitor the MWL level during the activity to adjust the characteristics of the task and keep the desired MWL level (**Figure 2a**).

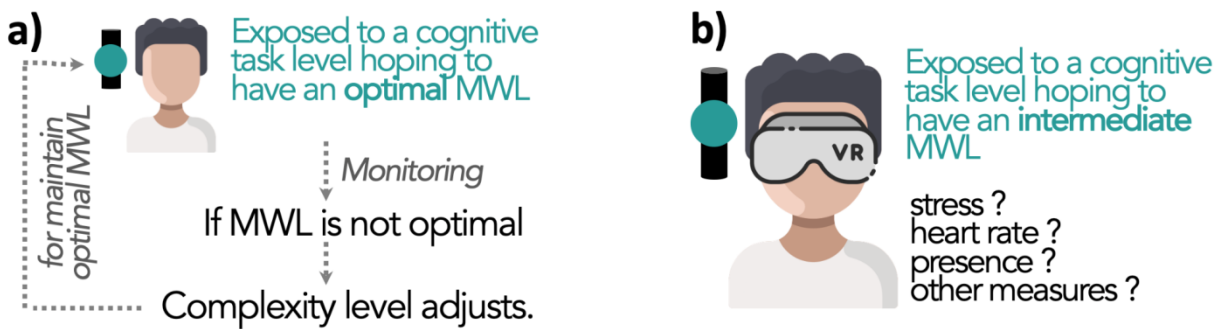


Figure 2: New possible use of the MWL concept in emerging applications such as medical remediation or Virtual Reality: (a) Online adjustment of task complexity to maintain optimized MWL or (b) assessment of the impact of a certain MWL level on different variables (such as stress or presence).

In the research context, it seems also useful to maintain a certain MWL during an activity to measure its impact on different variables (such as stress or presence in Virtual Reality; **Figure 2b**). To achieve this, we need to identify MWL evolution, applying relatively close transitions between MWL levels. Thus, we aim to identify "sliding" levels of MWL. Moreover, MWL should be in the intermediate range as required for many contexts (like in **Figure 2**). Rehabilitation in a clinical domain is a concrete example since we do not try to underload or overload patients. On the contrary, we aim at intermediate levels of MWL so that patients can be engaged with positive feelings in the rehabilitation process. Nevertheless, such applications are not yet available since no task is identified to obtain distinct and closed MWL level intervals with certainty. Then, making these level classes of MWL become directly predictable from the complexity level could be a challenge while taking into account the availability of the real time indicator. Thus, the aim of this paper is to propose several candidate cognitive tasks with distinct MWL levels that are in the intermediate zone. To identify the task(s) that best achieve distinct MWL levels, we propose to take advantage of the richness and complementary of different statistical methods.

Requirements for these mental workload applications

Several conditions are necessary. At first, we must propose at least one task with different complexity levels taking account that task difficulty is considered separately from task complexity. Indeed, task difficulty is a perceptual phenomenon while task complexity is considered as an intrinsic property to the task (Longo et al., 2022). Thus, we will consider task complexity in order to set up cognitive tasks (CTs).

Secondly, the task should be context-free, that is, it should not depend on a specific operational situation (like car driving), but it should reflect the solicitation of the different cognitive functions in a more generic way in order to be transferable and adaptable to various contexts. Indeed, several

170 authors (Berka et al., 2007; Radüntz, 2017; Guan et al., 2021) recommend studying MWL through
CTs since real-life situations can be decomposed into several cognitive functions. Currently, several
studies are mainly based on the N-back task (NBT) followed by the Sternberg task used to impact
MWL during CTs. But these are two CTs whose material is a set of letters of the Latin alphabet to be
remembered, thus soliciting only one type of cognitive function, the verbal working memory.
175 However, we aim to have several CTs soliciting several distinct cognitive functions. Furthermore,
NBT and Sternberg are socially and culturally marked since illiterates and people using other
alphabets (such as Cyrillic or Chinese characters) are excluded. Therefore, our goal is to have several
CTs, which are independent from any context and possibly used by the greatest number of people.

180 Moreover, an important question for our purpose deals with the measure of the MWL. Different
methods for assessing MWL exist and can be divided into three main categories (Miller, 2001; Galy
et al., 2012; Muñoz-de-Escalona and Cañas, 2018): subjective, performance, and
psychophysiological measures. The most relevant are the subjective ones as is it the most valid and
sensitive indicator (Hart and Staveland, 1988). Three multidimensional questionnaires are recognized
185 for measuring the MWL. These are the NASA Task Load Index (NASA-TLX; Hart and Staveland,
1988), the Subjective Workload Assessment Technique (SWAT; Reid and Nygren, 1988) and the
Workload Profile (WP; Tsang and Velazquez, 1996). According to Rubio et al. (2004) and Paxion
(2014), WP and NASA-TLX questionnaires are complementary as they compensate for the
limitations of each other. Indeed, these questionnaires are based on different methodological or
190 theoretical approaches. The WP is founded on the Multiple Resource Theory (MRT) of Wickens
(1984, 1987, 2008) cited above (Cf. *Conceptual framework of mental workload part*). Regarding
NASA-TLX, it is not rooted in a theoretical model, but on a methodological one. Following some
twenty scientific studies, Hart and Staveland (1988) identified six factors used to determine the
subjective MWL. Thus, one questionnaire (WP) is concerned with the saturation of the multiple pools
195 of attentional resources, while the other (NASA-TLX) is concerned with external (the first three
items) and internal (the last three items) factors impacting MWL. All these elements are found in the
definition of Longo et al. (2022) previously quoted.

200 However, some authors point out subjective measures which can lead to biases since individuals may
no longer remember the intrinsic details of the activity after performing it or respond in a way that
satisfies assumed expectations (Spérandio, 1988; Cain, 2007). Nevertheless, subjective measures of
MWL have a high diagnosticity criterion (ability to distinguish the source of the load) that is critical
for this multidimensional concept (Wierwille and Eggemeier, 1993). Furthermore, subjective
measures fulfill the validity criterion (ability of the measure to assess what must be evaluated).
205 However, subjective data have an important limitation for our purpose due to their lack of availability
in real time. Consequently, we also need accessible measurements during the activity taking into
account the performance (such as reaction time or errors).

MWL assessment methods based on performance analyses (primary performance or secondary
210 performance during dual-task paradigm) assume that the performance obtained in the execution of
one or more tasks will deteriorate if the demands expand (Cuvelier, 2012; Mandrick, 2013).
Moreover, several MWL models and definitions establish a link between task demands, MWL and
performance (Cf. *MWL definitions part*). Nevertheless, performance measures might sometimes be
limited to describe MWL given that operators may vary their effort to maintain a constant
215 performance level (Reid and Nygren, 1988; Cain, 2007; Raufaste et al., 2014). Also, performance
can be affected by other factors unrelated to workload such as stress or fatigue (Wickens et al., 2015).
Hence, a problem occurs linked to the validity criterion. Performance measures, although less valid,
might nevertheless be relevant, since of their multiplicity of possible variations (such as completion
time, errors, correct answers), thus making the occurrence of a high reliability criterion possible

220 (capacity to detect modulations of MWL). In addition, among the MWL measurement criteria, performance satisfies the equipment criterion (the evaluation measure requires minimal equipment).

The last category of MWL measurement is the psychophysiological measures. This term refers to the physiological response to psychological events. These measures are a natural type of workload index since work demands physiological activity (Young et al., 2015). The main advantages of this type of measure are their objectivity and their possibility to be gathered in real time (Cain, 2007). For physiological measures, EEG is one of the most effective measures of MWL (Zhang et al., 2018). For instance, the study of Raufi and Longo (2022) had demonstrated that EEG band ratios, specifically the alpha-to-theta and theta-to alpha ratios could be treated as MWL indexes for the discrimination of self-reported MWL. However, for all psychophysiological measures, Kramer (1991) mentions the required equipment and technical expertise as disadvantages. Also, the possible occurrence of a noisy signal from physiological measurements (a weak signal-to-noise ratio) can lead to undesirable effects. Furthermore, physiological measures may involve different mental concepts such as stress (Katmah et al., 2021) or mental fatigue (Tran et al., 2020), physiological data may thus be difficult to interpret and have a validity problem.

Therefore, obtaining a good indication of MWL in real time will require having tasks with enough performance indicators. This will ensure a more reliable predictive model of MWL considering the richness and diversity of the performance dimensions. Thus, it could maximize the chances of having greater sensitivity, that is, ability of the measure to discriminate changes in MWL. As a result, determining whether we can really deal without psychophysiological data whose benefit/constraint ratio is negative will become possible.

Finally, the MWL measure via questionnaires leads to large variations among people (inter-individual). We can also observe this variation with a given person from one trial to another one, despite a same effective feeling (intra-individual). Thus, a good indicator of this variable must be able to predict, not only one value of MWL (the most likely for example), but a class of values susceptible to be observed in each condition. Our task must consequently be able to propose complexity levels inducing different class of MWL in the intermediate zone of MWL while being sufficiently distinct to allow wide but not superposed classes of MWL values.

Thus, through this study, our aim is to answer the two following questions:

- 1- Can we identify subjective mental workload classes corresponding to the complexity levels?
- 2- Can we predict these mental workload classes based on complexity levels and/or performance?

Material and methods

255 Participants

Fifty-three healthy French-speaking participants, residing in France and meeting the inclusion criteria (fluent in French, right-handed, having normal or corrected-to-normal vision and normal or corrected-to-normal hearing), took part in this online experiment (28 women, 24 men, and 1 non-binary person corresponding to an "*identification with gender identities outside of male or female categories*" (Poirier, 2019)). With an average age of 28.64 years (SD = 6.89 years), the voluntary participants were told the real purpose of the experience. 96.23% of them (51 people) had at least a bachelor level + 2 years including 43.4% with a master degree. The rest of the participants had the bachelor level. Moreover, 66.26% (33 people) worked for Onepoint company, 9.43% came from the University of Nantes and the others were acquaintances of the experimenters.

265

Tasks and procedure

To have many participants in a given time and in pandemic restrictions time, we opted for an online study. Therefore, instructions for the test were designed for an optimal remote experiment (such as the need to sit in a quiet room or to put the phone on mute).

270

Cognitive tasks

All the tasks were created using *Unity3D* software (Version 2019.4.30f1).

275 Participants undertook five cognitive digitized tasks on their own personal computers. We had selected beforehand popular cognitive tasks whose structure made it possible to induce several dimensions. The tasks were (**Figure 3**): N-back task (NBT), Corsi block-tapping test, Wisconsin Card
280 Sorting test (WCST), Go/No-Go (GNG) test and a Dual task (DT). All participants were exposed to tasks in random order. NBT is renowned to have complexity levels inducing MWL levels in intermediate zone of MWL corresponding to low MWL, medium MWL and high MWL for respectively 0-back, 1-back, and 2-back levels (Arvaneh et al., 2015; Dimitrakopoulos et al., 2017; Ries et al., 2018). Thus, NBT served as a benchmark to calibrate the complexity levels of the other tasks during pre-tests where we could evaluate several levels with at least five participants. Performance measures were the indicators for selecting the three complexity levels. However, with these measures, we could not obtain comparable indicators as they were different from task to task and not easily transferable (Sirevaag et al., 1993; Raufaste et al. 2004). We therefore defined a
285 common performance indicator for all tasks, corresponding to the percentage of *Expected responses*. For example, if the participant responded properly to all her/his questions, the *Expected responses* were 100%. Thus, during pre-tests with several complexity levels, we had selected three of them according to their *Expected responses*.

TASKS

THREE LEVELS IN OUR RESEARCH

ILLUSTRATIONS FOR THE FIRST LEVEL

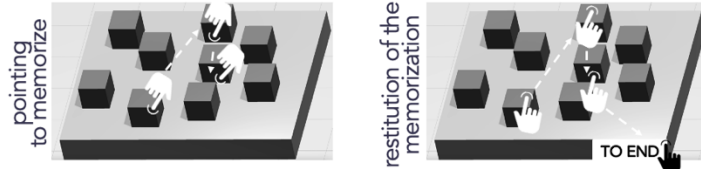
N-back task

Level 1 : 0-back
 Level 2 : 1-back
 Level 3 : 2-back



Corsi block-tapping test

Level 1 : 3 cubes
 Level 2 : 5 cubes
 Level 3 : 7 cubes



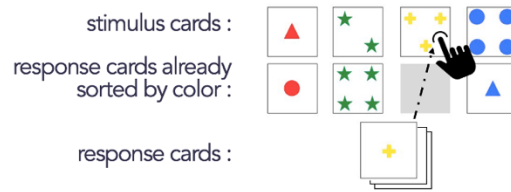
Go/No-Go test

Level 1 : 90 % of No-Go = X
 Level 2 : 50 % of No-Go = X in disk
 Level 3 : 20 % of No-Go = X in squares preceded by empty disks



Wisconsin Card Sorting Test

Level 1 : with general category AAAA, BBBB, CCCC
 Level 2 : with alternate category ABAB, BCBCB, etc. ...
 Level 3 : with difficult alternate category ABCABC etc. ...



Dual task

Level 1 : (X+X)
 Level 2 : (XX-XX)
 Level 3 : (X*X-XX+X)

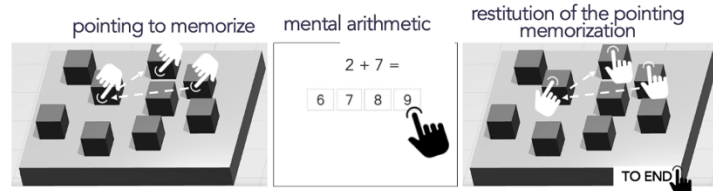


Figure 3: Experimental design of the study where participants were randomly assigned tasks.

N-back task

N-back task (NBT) is a verbal memory span test which involves the refreshment capacity of working memory proposed by Kirchner (1958). Indeed, NBT requires participants to react when a stimulus (like a letter) is the same as the stimulus presented before it (if it occurs, it is a target). In our study, the letters were presented centrally for 500 ms each, followed by a 1500 ms interstimulus interval. Participants were invited to respond by indicating whether the letter was a target (pressing the left directional key) or a non-target (pressing the right directional key). Three complexity levels (0-back; 1-back; 2-back) were proposed with 20 trials (including 6 to 8 target letters) for each level. Regarding 0-back level, the target was the letter "X". Concerning the 1-back and 2-back levels, the target was the letter presented immediately or two letters before the current one. Finally, performance measures had six dimensions: *No answers*, *False alarms* (pressing on the target key when a non-target letter was displayed), *Omissions* (not pressing on the target key when it was a target letter), *Reaction time for all items*, *Reaction time for correct answers* and *Expected responses*.

Corsi block-tapping test

Block-tapping task or Corsi test (Corsi, 1972) is a visual-spatial memory span task which consists in remembering a sequence of cubes, reproducing then the sequence in the same order. The material is

310 the same as in the study by Kessels et al. (2000). Three complexity levels (3 cubes, 5 cubes and 7
cubes) were proposed with two sequences each. As such, the maximum number of items varied from
one level to another. In this case, each performance data was expressed as a percentage (divided by
the maximum possible number) aiming to compare the different complexity levels. Finally,
315 performance measures had seven dimensions: *Pointed cubes*, *Correct cubes*, *False cubes*, *Omissions*,
(not pressing a cube), *Exact sequences* (number of cubes pointed in the expected order and position),
Total Time and *Expected responses*.

Go/No-Go

320 Go/No-Go task (GNG) is a mental inhibition of motor response task. For our study, we based
ourselves on the GNG version of Vidal et al. (2012). The stimuli were presented in a randomized
manner and consisted in black disks and black squares on a white background. A shape appeared
either full or empty. In the first level, when the shape was empty, individuals had to click on the
ENTER key of the keyboard with their right hand (Go target). Conversely, when the letter X appeared
325 randomly on the shapes, individuals had to inhibit their motor response. The X was therefore a No-
Go target. Three complexity levels were proposed. A simple level (with 90% of No-Go = X), an
intermediate level (with 50% of No-Go = "X" in disk) and a difficult level (with 20% of No-Go =
"X" in squares preceded by empty disks). Each level had 10 items presented for 200 ms followed by
a fixation point of 500 ms. Performance measures had five dimensions: *False alarms* (pressing the
330 key when a No-Go target was displayed), *Omissions* (not pressing the key when it was a Go target),
Reaction time for correct answers, *Total time*, and *Expected responses*. Also, *False alarms* and
Omissions were expressed as a percentage (divided by the maximum possible number) with the aim
of comparing the different complexity levels. Indeed, the maximum number of items varied from one
level to another. For example, in 10 items, level 1 could express maximum 9 *False alarms* (since this
335 level had 9 No-Go), level 2 could express maximum 5 *False alarms* (since this level had 5 No-Go)
and level 3 could express maximum 2 *False alarms* (since this level had 2 No-Go).

WCST

340 WCST (Heaton, 1981) is a card sorting task during which the participant must follow a classification
rule and adapt to various rule changes. Therefore, this task enables the involvement of mental
flexibility, which represents the ability to shift between tasks (Miyake et al., 2000). For the present
study, we were guided by the French version validated by Godefroy et al. (2008) dealing with the
Modified Card Sorting Test (Nelson, 1976). The top of the computer screen displayed four target
345 cards (one with a red triangle, one with two green stars, one with three yellow crosses and one with
four blue circles). At the bottom of the screen, there was a stack of several cards named response
cards which were scrolled every 2000 ms. In this stack, the shapes could be circle, cross, star, or
square, the numbers could be 1, 2, 3 or 4, and the colors yellow, red, green, or blue. Three complexity
levels were proposed: Level 1 – Sorting by general dimensions (type of figure, color of the figure or
350 number of figures). Participants had to focus on a single dimension to sort the cards. Level 2 – Sorting
by alternating dimensions. Participants had to alternate between two distinct dimensions (for example
color and number of figures) on each trial. Level 3 – Sorting by complex alternating dimensions.
Participants had to alternate between the three dimensions on each trial. Finally, performance
measures had six dimensions: *Number of errors*, *Perseverative errors* (when the incorrect answer
355 matched the category used by the person for his/her previous answer), *Reaction time for all items*,
Reaction time perseverative errors, *Total time* and *Expected responses*.

Dual task

360 This task was partly based on the previously mentioned Corsi test. But the Corsi part of this Dual
task still had three cubes to be memorized. In parallel, a mental calculation task was added to disturb
the memorization process. Consequently, this task was inserted between the pointing of the cubes by
the experimenter (thus the beginning of the memorization) and the restitution of the pointing by the

participants. The calculation task was chosen since we needed a Dual task with visual-spatial memory and verbal memory. For this last, it was necessary to have a fast and adjustable test at the complexity level. Therefore, we used a calculation task based on So et al. (2017) study, with four clickable choices of possible answers. Three complexity levels were proposed with two sequences each. A simple level: single-digit addition, an intermediate level: double-digit subtraction and a difficult level: mixed arithmetic operations with multiplication and subtraction. Finally, performance measures offered nine dimensions, including the same performance dimensions as the Corsi in addition to mental calculation performance corresponding to *Correct answers* and *Calculation total time*.

Questionnaires

As mentioned in the introduction, as NASA-TLX and WP questionnaires are multidimensional and complementary, they were used in the present study.

NASA-TLX questionnaire

NASA-TLX (Hart and Staveland, 1988) rates perceived workload on six different sub-scales: Three dimensions associated with the activity (mental demands, physical demands, time pressure), two dimensions associated with the strategies (performance, effort) and one dimension specific to the individual's emotional state (frustration). After each task level, the participant has to score each dimension from 0 (no demand) to 100 (maximum demand). In our study, we considered each dimension of the NASA-TLX questionnaire and its overall score. For this last one, we used the unweighted version of the questionnaire by averaging the six dimensions in order to calculate a Raw Task Load Index (RTLX). This method was validated by Byers et al. (1989). Thirty years later, Cegarra and Morgado (2009), demonstrated that the French version showed a strong correlation between the weighted score (TLX) and the unweighted score (RTLX).

Workload Profile questionnaire

WP (Tsang and Velazquez, 1996) was based on the Multiple Resource Theory (MRT) of Wickens (1984, 1987) and asked the participants to provide the proportion of attentional resources used after they had experienced the tasks. Thus, the workload dimensions used in this technique were defined by the resource dimensions hypothesized in the MRT: *Perceptual central processing*, *Response selection and execution*, *Spatial processing*, *Verbal processing*, *Visual processing*, *Auditory processing*, *Manual output*, and *Speech output* (Rubio et al., 2004). For each task, the participant had to provide a number between 0 (no demand) and 100 (maximum demand) representing the proportion of attentional resources used in each of the eight workload dimensions.

Since there was no solving, selection, auditory and speech tasks in our study, only four of the eight dimensions were analyzed. Indeed, referring to the main article of the questionnaire (Tsang and Velazquez, 1996, p. 362), this one can only be rated in a one-dimensional way. Thus, for our study, we considered *Spatial processing scale* (WP3), *Verbal processing* (WP4), *Visual processing* (WP5) and *Manual output* (WP7).

Experimental procedure

Each participant was clearly informed about the objectives and the course of the study before signing the consent letter to participate in the online study. This experiment adopted a 5 X 3 within-subject design with 5 task types and 3 complexity levels in tasks. The experimental phase proceeded as follows:

- Presentation of a summary of the study by email or through professional social networks.
- When the person showed interest, the experimenter sent her/him a link with a personal password.
- Therefore, the participant connected to the online experimental session once the password entered, and an electronic signature on consent letter was requested before the pre-test questionnaire (questions about age, gender, level of education).

- Once these phases completed, they performed the CTs in two one-hour sessions. All tasks included instructions on how to perform (in the form of text, images and videos) followed by a training session to become familiar with the presentation of the stimuli and the required interactions. The total duration of one task was about 15-20 min.

415 - After each task level, an electronic version of the NASA-TLX and WP questionnaires was delivered. All participants were exposed to tasks and complexity levels in random order. At the end of the study, all participants received 15 euros in vouchers.

Data analysis

420 To answer the two research questions, the following research hypotheses were defined.

Concerning the question “*Can we identify subjective MWL classes corresponding to the complexity levels?*”

425 **H1:** If the complexity levels lead to distinct MWL classes, then the means for each complexity level will be different and the MWL data will probably be spontaneously grouped according to their proximity into MWL value classes, and these classes will potentially be correlated to those obtained via the complexity levels.

→ First, for all subjective measures (NASA-TLX and WP questionnaires), we normalized these data through the correction proposed by Cousineau (Morey, 2008). This normalization was based on within-subjects confidence intervals which were recommended for subjective data like those from questionnaires. Cousineau’s method could be described as follows. Let y_{ij} be the i th participant's score in the j th condition ($i = 1, \dots, N; j = 1, \dots, M$). Then, the normalized observations z_{ij} were defined as follows:

430

$$z_{ij} = y_{ij} - \frac{1}{N} \sum_{j=1}^M y_{ij} + \frac{1}{NM} \sum_{i=1}^N \sum_{j=1}^M y_{ij}$$

435

In our case, we subtracted the mean of all conditions (the five tasks) and added the mean of every participant in all experimental conditions.

440 → Then, we carried out ANOVAs to compare the MWL class averages in relation to the complexity levels. For each specific analysis, the characteristics of the ANOVAs will be specified in the result section.

445 → Subsequently, we performed K-means classification to identify the "spontaneous" MWL classes obtained with our protocol. Indeed, comparing MWL averages through a grouping based on the complexity levels could artificially suggest the presence of different MWL averages by hiding the overlapping of classes. We therefore used another method to observe the groupings of MWL values, not based on the complexity level but on the proximity between the observed values. The classes obtained were then compared to those observed by considering the complexity levels.

450 Therefore, the other step in analyzing our results was to investigate if we could obtain three MWL classes without considering complexity level. For this purpose, we used the K-means technique to perform clustering. Existing studies (Al-Mohair et al., 2015; Shaheen et al., 2020) employing clustering referred to K-means as a simple, reliable, and robust technique for clustering. K-means clustering divided the data into K sets. The number of possible sets depended on the nature of the data or the plausible possibility of the number of sets that a data could offer.

455

→ For all CTs, we kept the whole set of dimensions of the NASA-TLX, since this questionnaire must be considered in its entirety (Hart and Staveland, 1988) unlike WP questionnaire. Indeed, referring to the main article of this questionnaire (Tsang and Velasquez, 1996, p. 362), WP is specified to be

rated in a one-dimensional way. Therefore, for each CTs and before the clustering step, we identified the dimensions of the most relevant WP depending on the logic of the task, that is, the cognitive demands it generated. We also considered the results of the previous analysis (ANOVAs) showing the most affected WP dimension by each task. It's worth noting that in this study, we specifically selected the dimensions of the WP questionnaire that we deemed relevant for examination. However, with this protocol we did not measure all the resources spent (8 dimensions in total). Consequently, WP results were limited to the presented tasks and could not be generalized across other tasks.

→ Finally, we calculated the correlation between MWL classes obtained from the K-means with the classes obtained via the complexity levels.

Concerning the question “*Can we predict these MWL classes based on complexity levels and/or performance?*”

H2: If the performance measures are rich and diversified, then it will be likely to find a model which will correctly classify the MWL according to the complexity levels and/or performance.

For this research question, we wanted to predict the belonging to a class of MWL values. For this purpose, a supervised classification (specific to each CT) was used to classify observations in different categories of the dependent variables, aiming at identifying whether an individual stayed in a MWL class or changed MWL class over time.

→ It seems interesting to note that the variable to be predicted (subjective MWL) corresponded to the classes established by K-means. For each analysis, we first considered complexity level as a variable for the model, followed by the comparison of the model precision with the one obtained when complexity level was removed from the model and that only performance was considered by the model.

→ Concerning the supervised classification technique, we selected Linear Discriminant Analysis (LDA). Besides its low computational cost (compared to the Support Vector Machine – SVM for instance), the LDA have been used in the domain of cognitive tasks (Abibullaev and An, 2012; Yoo et al., 2020). Moreover, the hyperplane of LDA used to separate different classes allowed to identify the features that maximize the between-class variances, while minimizing the within-class variance (Mohanavelu et al., 2022). This was one of the aims of our study.

LDA model in this study, calculated the balanced accuracy for our case of multiclass analysis (ratio of true positives to total positives). We then considered the Cross-validation score obtained with complexity levels and performance combinations and the one obtained with only performance combinations. The details of performance measures for each task were described in the methods section. Concerning the selection of MWL variables, we used the best selection for each task based on previous results (ANOVAs, K-means, and correlation coefficient between MWL classes with K-means and MWL classes with complexity levels).

→ We then calculated the importance of the different variables for the model. For this, we used the Permutation Feature Importance (PFI) method. PFI is defined as the decrease of the model score when the value of a predictor variable is randomly shuffled. PFI permutes the features at each round, then removes a feature from the list and associates the increase in error as the rank to the feature previously removed. Unfortunately, PFI showed a significant inconvenient as it did not indicate how many features to use but only the most highly ranked (Bel, 2020).

Finally, to have an overall picture of our analysis procedure, we proposed a diagram (**Figure 4**) with all the steps of data analysis for the two research hypotheses.

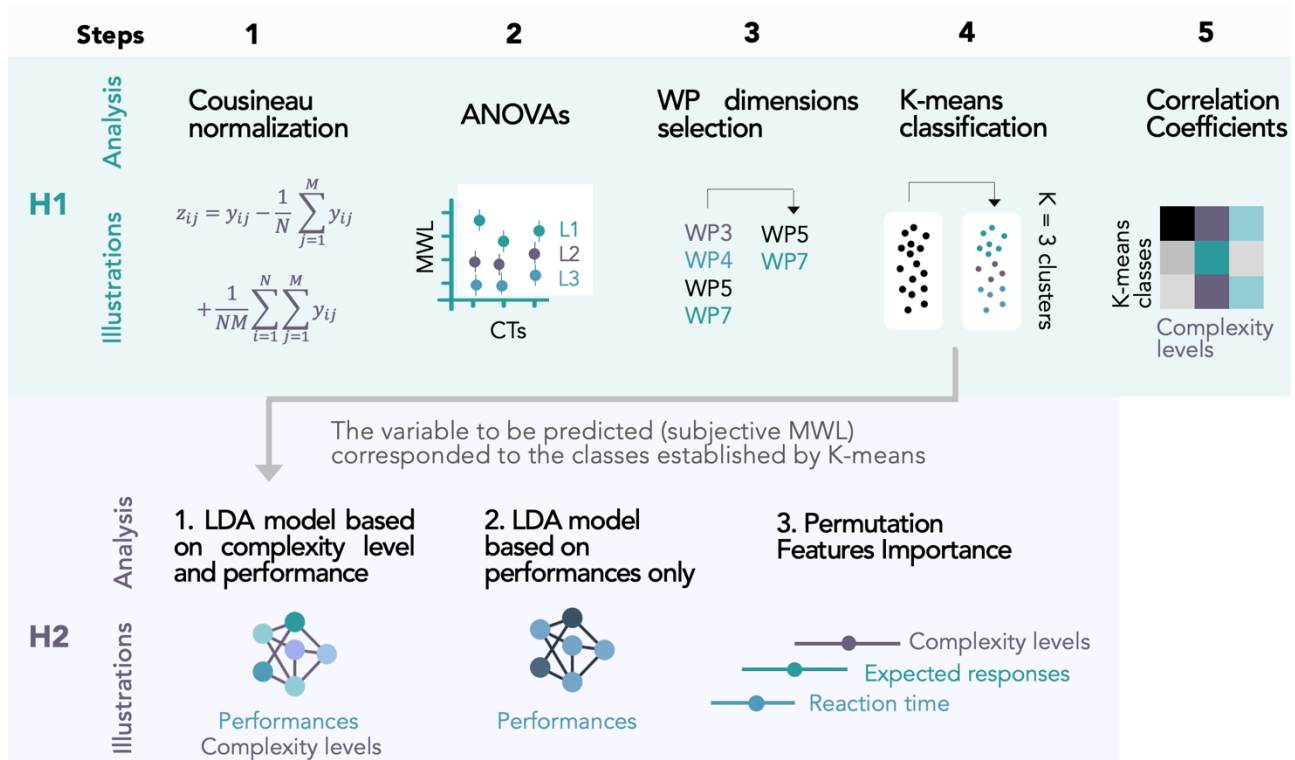


Figure 4: Diagram with all the steps of data analysis for the two research hypotheses.

Results

Above all else, we started the analysis of our results by making sure that the complexity levels of our five CTs generated three distinct levels of performance.

Complexity level and performance

To compare the performances between tasks, we established a performance criterion common to all five CTs, the *Expected responses* (Cf. *Cognitive tasks* part). Moreover, some distributions of our data were not normal, and variances were not homogeneous. For this reason, we used non-parametric statistics with the *JASP* software (version *JASP* 0.16). A non-parametric Repeated-Measures ANOVA (with the Friedman test) was performed (with the complexity level as independent variable and the performance as a dependent variable) followed by Wilcoxon signed-rank tests and Conover's post hoc comparisons.

Concerning *Expected responses* (**Figure 5**), we could observe a main effect of complexity level independently of the tasks (Table 1 part A in **Appendix**; $X^2(2) = 145.255$; $p < 0.001$). Levels 1 and 2 were significantly different (Table 1 part B in **Appendix**; $T(740) = 2.887$; $p = 0.004$), as well as levels 2 and 3 ($T(740) = 2.592$; $p = 0.010$). Thus, complexity level 1 turned out to be the least complex level and level 3 proved to be the most complex.

Moreover, considered task by task, all complexity levels were significantly different (Table 1, part C in **Appendix**) except levels 2 and 3 of GNG ($W = 561.000$; $p = 0.086$) and DT ($W = 460.000$; $p = 0.102$). Consequently, the three complexity levels generated three distinct levels of *Expected responses* for NBT, Corsi and WCST. However, levels 2 and 3 did not show significant difference when using GNG and DT.

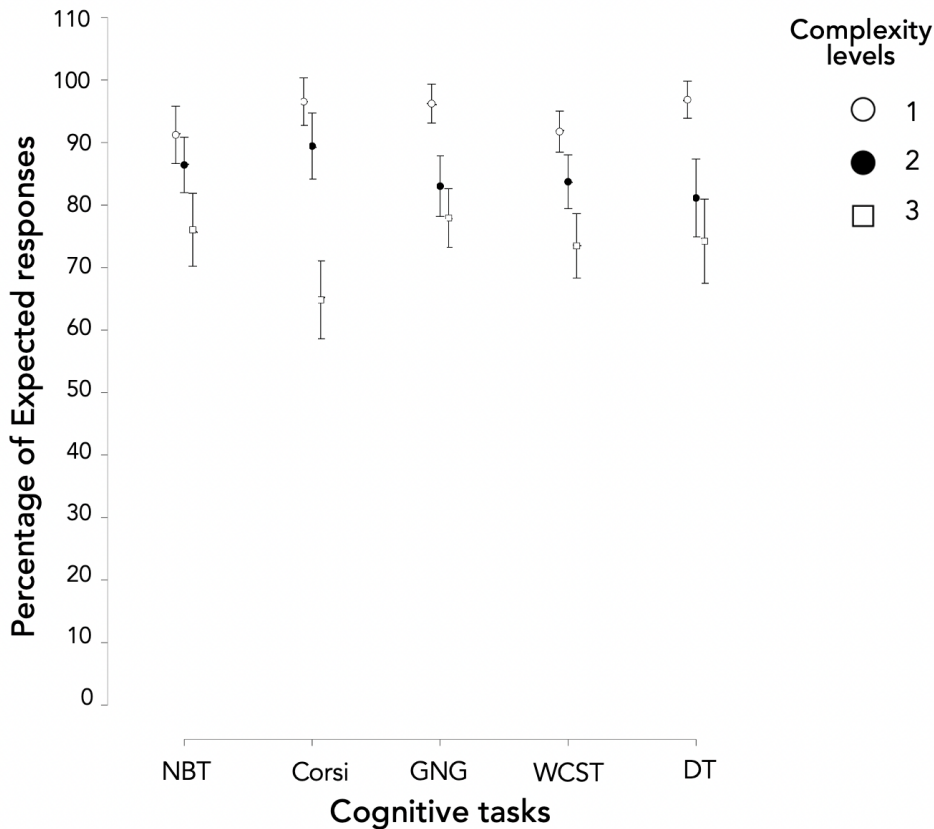


Figure 5: Performance in terms of Expected responses according to the cognitive tasks and the levels.

540

Correspondence between MWL classes and complexity levels

For this part, non-parametric statistics with the *JASP* software (version JASP 0.16) were used.

545

A non-parametric Repeated-Measures ANOVA (with the Friedman test) was performed with the complexity levels as independent variable and the subjective measures (NASA-TLX and WP) as a dependent variable. Then, Wilcoxon signed-rank tests and Conover's post hoc comparisons were used.

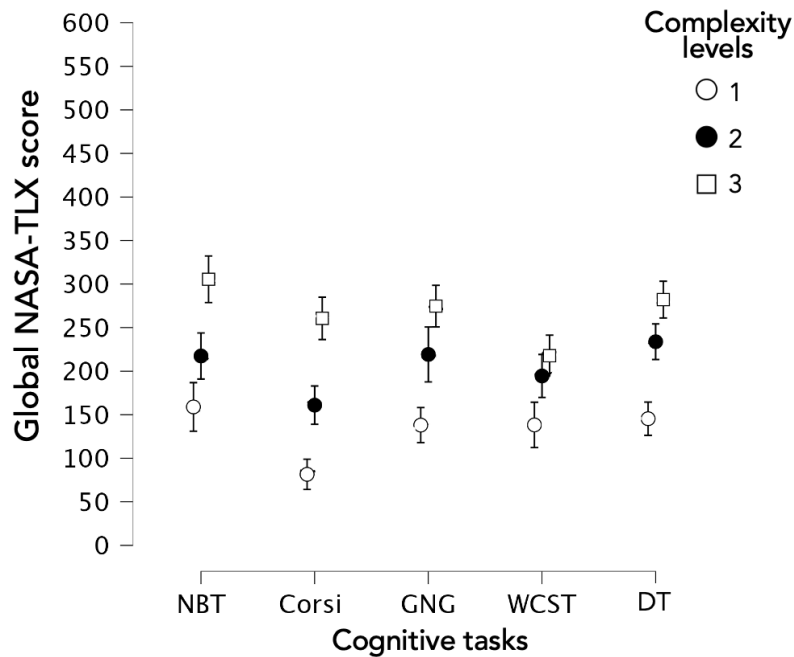
NASA-TLX questionnaire

550

Concerning *overall NASA-TLX score* (corresponding to the sum of the six NASA-TLX dimensions, **Figure 6**), a significant main effect of complexity level occurred (Table 2, part A in **Appendix**; $X^2(2) = 179,626$; $p < 0.001$). Independently of the task, all complexity levels were significantly different (Table 2, part B in **Appendix**). Furthermore, considered task by task, all complexity levels were also significantly different (Table 2, part C in **Appendix**). Hence, the three complexity levels generated three distinct levels of overall MWL.

555

Moreover, considered level by level, NBT and GNG did not turn out significantly different for the three complexity levels. Besides, this could also be observed between NBT and DT, and GNG and DT (Table 2, part D in **Appendix**).



560 *Figure 6: Mental workload based on overall NASA-TLX score according to the type of task and the level.*

Concerning the dimensions score of the NASA-TLX questionnaire, we will first consider *Mental demand* (Figure 7). A significant main effect of complexity level occurred (Table 3 in Appendix; $X^2(2) = 164,416$; $p < 0.001$). Independently of the task, all complexity levels were significantly different. Moreover, considered task by task, all complexity levels were significantly different except for the levels 2 and 3 of WCST ($W = 546.000$; $p = 0.135$). Thus, the three complexity levels generated three distinct levels of *Mental demand* except for WCST.

570 Concerning *Physical demand*, first, in Figure 7, MWL based on *Physical demand* turned out the lowest for all the tasks considered, when compared to the other dimensions, with an average below 30 in 100 on the Likert scale. Furthermore, despite a significant main effect of complexity level (Table 3 in Appendix; $X^2(2) = 14.769$; $p < 0.001$), independently of the task, the complexity levels were not significantly different. This could be explained by the effect size - Kendall's coefficient of concordance (Kendall's W) - used for assessing agreement among raters. Kendall's W ranges from 0 (no agreement) to 1 (complete agreement). Concerning the main effect of the complexity level for *Physical demand*, it turned out to be relatively small ($W = 0.061$). Moreover, considered task by task, the three complexity levels were not significantly different. Hence, our three complexity levels did not generate three distinct levels of *Physical demand*.

580 Concerning *Temporal demand*, a significant main effect of complexity level occurred (Table 3 in Appendix; $X^2(2) = 49.422$; $p < 0.001$). Independently of the task, only levels 1 and 2 ($T(740) = 2.008$; $p = 0.045$) were significantly different, as well as levels 1 and 3 ($T(740) = 3,286$; $p = 0.001$). However, considered task by task, all complexity levels were significantly different except for the levels 2 and 3 of GNG ($W = 419.000$; $p = 0.689$). Thus, our three complexity levels generated three distinct levels of *Temporal demand* except for GNG.

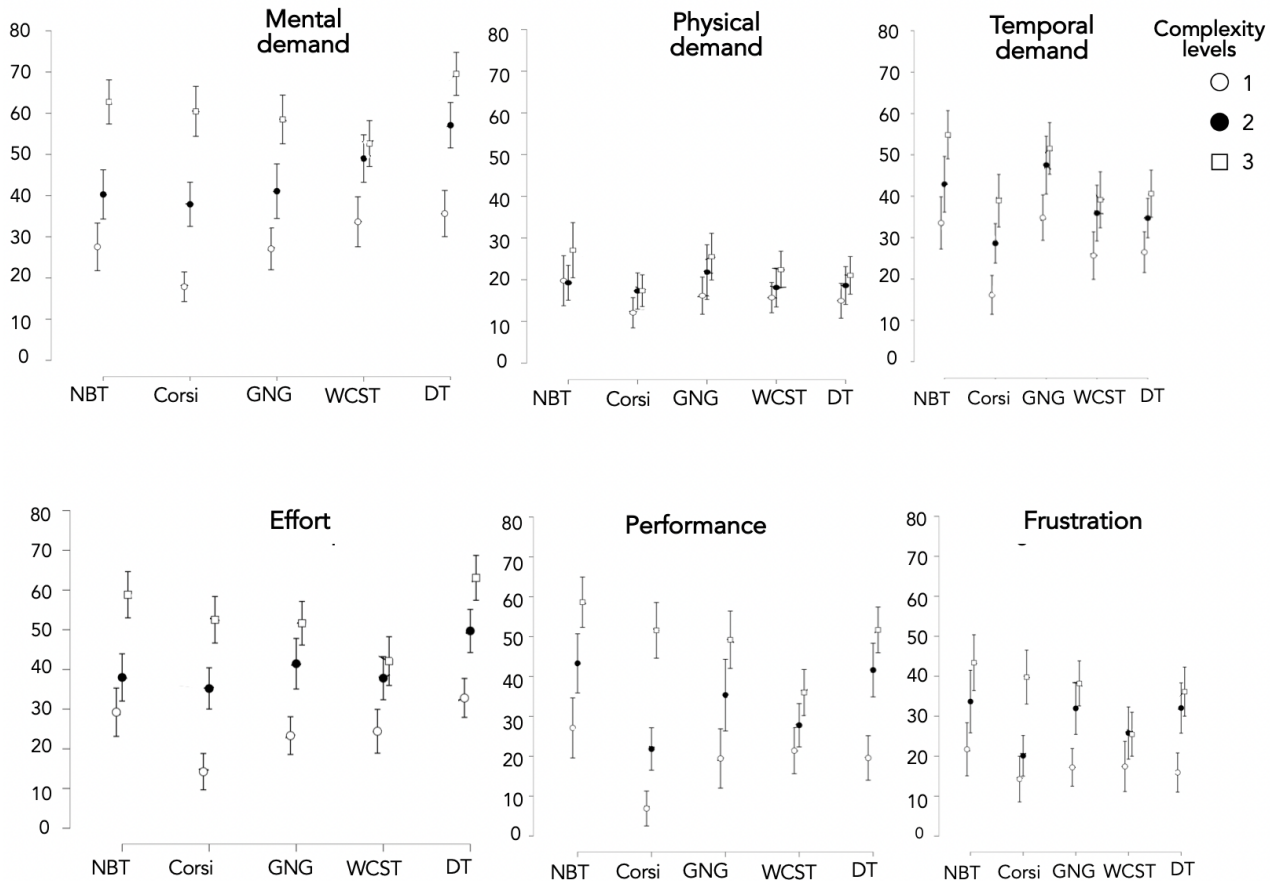


Figure 7: Scores of the 6 dimensions of NASA-TLX depending on the task and complexity level.

590

Concerning *Effort*, a significant main effect of complexity level on all tasks occurred (Table 3 in **Appendix**; $X^2(2) = 143.925$; $p < 0.001$). Independently of the task, all levels were significantly different. Moreover, considered task by task, all complexity levels were significantly different except for the levels 2 and 3 of WCST ($W = 518.000$; $p = 0.081$). Hence, the three complexity levels generated three distinct levels of *Effort* except for WCST.

595

Concerning *Performance*, a significant main effect of complexity level on all tasks occurred (Table 3 in **Appendix**; $X^2(2) = 137.616$; $p < 0.001$). Independently of the task, all levels were significantly different. Moreover, considered task by task, all complexity levels were significantly different, even for levels 2 and 3 of WCST ($W = 409.500$; $p = 0.028$). Thus, the three complexity levels generated three distinct levels of *Performance*.

500

Finally, concerning *Frustration*, a significant main effect of complexity level on all tasks occurred (Table 3 in **Appendix**; $X^2(2) = 81.364$; $p < 0.001$). Independently of the task, all levels were significantly different except for levels 2 and 3 ($T(740) = 1.662$; $p = 0.097$). Moreover, considered task by task, pairwise comparisons showed that it only concerned Corsi and DT.

505

To summarize, three complexity levels generated three distinct levels of *overall MWL*. This was the case for the *Performance* for all CTs as well. This result also concerned *Mental demand* and *Effort* except for WCST. As well, three complexity levels generated three distinct levels of *Temporal demand* except for GNG. Concerning *Frustration*, results turned out different according to the CT and only Corsi and DT induced different *Frustration* levels as a function of complexity level. Finally, *Physical demand* was the only dimension which was not influenced by the complexity level whatever

510

the CT and compared to the other dimensions, MWL from *Physical demand* was the lowest for all the tasks considered.

WP questionnaire

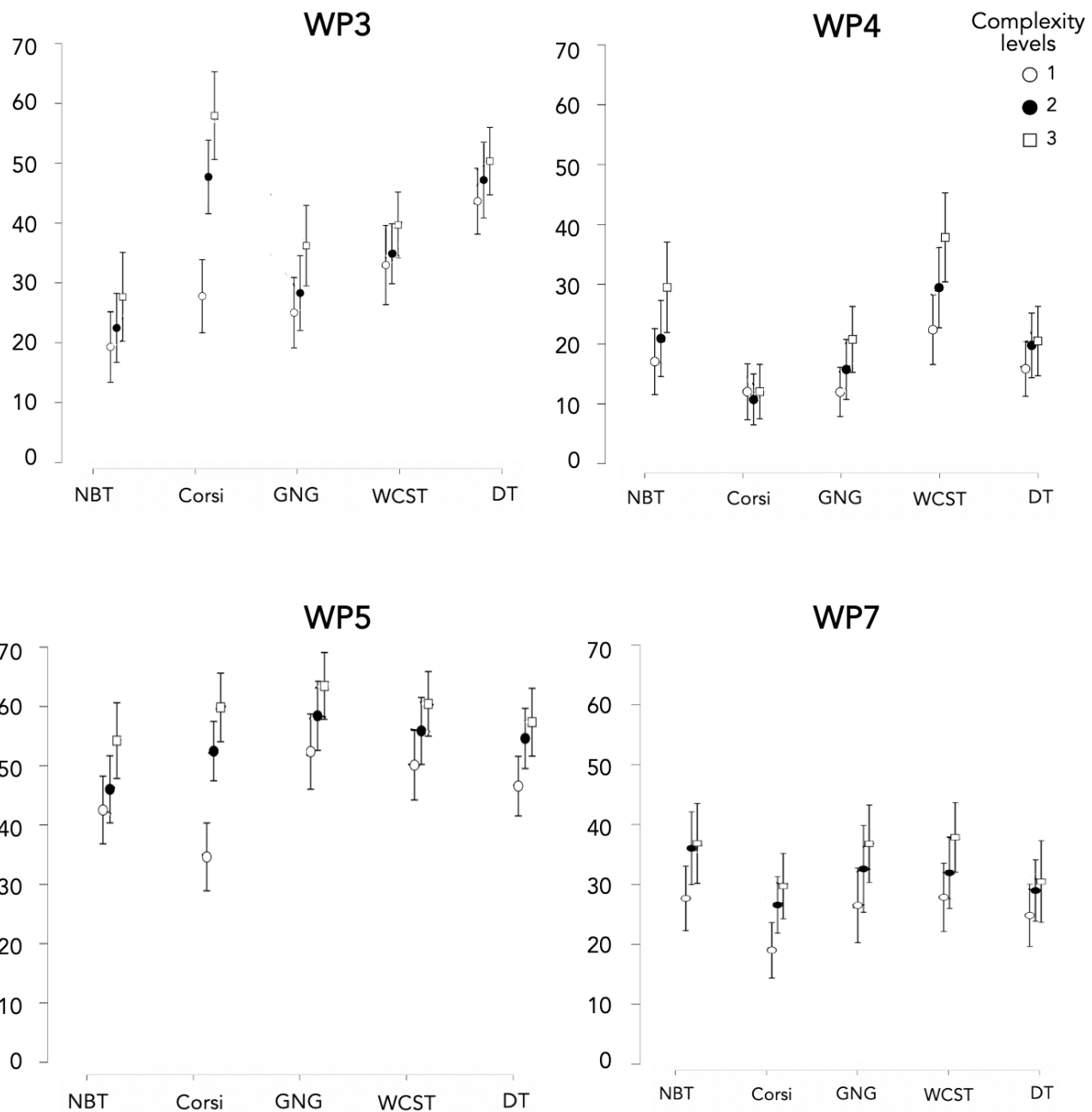
For this part, we detailed the results of each WP dimension that we had previously selected, namely WP3-*Spatial processing*, WP4-*Verbal processing*, WP5-*Visual processing*, and WP7-*Manual output* (Cf. *Workload Profile questionnaire* part).

Concerning WP5, first, in **Figure 8**, we could observe that compared to the other dimensions, MWL was the highest for nearly all the tasks considered, with an average above 30 in 100 on the Likert scale. Furthermore, despite a significant main effect of the task ($X^2(4) = 13.893$; $p = 0.008$), Conover's post hoc comparisons between tasks indicated no significant differences (Table 4, part C in **Appendix**). This could be explained by the relatively small effect size ($W = 0.026$). Moreover, a significant main effect of complexity level on all tasks ($X^2(2) = 43.682$; $p < 0.001$) but only levels 1 and 3 ($T(740) = 3.056$; $p = 0.002$) were significantly different. Finally, considered task by task, all complexity levels turned out significantly different for NBT and Corsi only.

Concerning WP3 (**Figure 8**), a significant main effect of the task occurred (Table 4, part A in **Appendix**; $X^2(4) = 86.422$; $p < 0.001$). WP3 for DT and Corsi were significantly greater than for GNG. Furthermore, WP3 for NBT was significantly lower than for all the tasks (except with GNG). Moreover, a main effect of complexity level occurred (Table 4, part A in **Appendix**; $X^2(2) = 27.797$; $p < 0.001$) but only levels 1 and 3 were significantly different ($T(740) = 2.447$; $p = 0.015$). Considered task by task, all complexity levels turned out significantly different for Corsi only.

Concerning WP4, a significant main effect of the task occurred (Table 4 in **Appendix**; $X^2(4) = 55.564$; $p < 0.001$). WP4 of NBT and WCST generated the highest MWL compared to the other CTs. Moreover, despite a significant main effect of complexity level ($X^2(2) = 13.809$; $p = 0.001$), no level was significantly different with another, even for levels 1 and 3 ($T(740) = 1.699$; $p = 0.090$). Thus, considered task by task, all complexity levels were significantly different for WCST only.

Concerning WP7, the main effect of the task did not turn out statistically significant ($X^2(4) = 5.944$; $p = 0.203$). Moreover, despite a statistically significant main effect of complexity level ($X^2(2) = 15.296$; $p < 0.001$), when compared two by two, levels did not appear significantly different, even for levels 1 and 3 ($T(740) = 1.809$; $p = 0.071$). This could be explained by the small effect size ($W = 0.055$).



550

Figure 8: Mental workload score of four dimensions of WP questionnaire (WP3, WP4, WP5 and WP7) depending on the task and complexity level.

555

To summarize, WP5 was an important dimension, since whatever the CT, MWL from WP5 appeared the highest compared to the other WP dimensions. This result was coherent with the logic of the tasks which were carried out on a screen with visual processing of the information. Moreover, our protocol with three complexity levels generated three distinct levels of WP5 for NBT and Corsi. This case also concerned both WP3 for Corsi and WP4 for WCST. WP7 was the only dimension which was not influenced by the complexity level whatever the CT.

560

Moreover, for each WP dimension, there were significant differences between tasks. Concerning WP3, DT and Corsi were significantly greater than GNG. This result was logical since these two tasks solicited visuo-spatial memory. Concerning WP4, NBT and WCST generated the highest MWL compared to the other CTs. It was coherent with the logic of these tasks since they implicitly led the

565 participant to say mentally or out loud the information to keep in mind. Finally, WP7 was the only CT without a main effect of the task, showing therefore constituency since all participants had similar manual output (interactions limited to keystrokes or mouse/touchpad movements).

Clustering subjective MWL and verifying the correlation between subjective classes and complexity level

570 For these analyses, we used *JASP* software (version *JASP* 0.16).

575 We used an unsupervised classification method, the K-means technique with Hartigan-Wong algorithm, a default parameter in *JASP* software. We observed the quality control of the clusters with three criteria. The first two were Akaike Information Criterion (AIC) and the Bayesian Information Criterion (BIC) which were analytical methods for estimating the relevancy of statistical models to each other for a given data set (the lower the values the better the clustering results). Also, we added the Silhouette score that compared the mean intra-cluster distance to the mean nearest-cluster distance (ranged from -1 to 1, where 1 represented a perfect score). Obtaining several quality criteria was critical since they could nuance the results.

580 *Variables selection for K-means clustering*

The selection of subjective dimensions for each task was summarized in **Table 1**.

	WP3-spatial	WP4-verbal	WP5-visual	WP7-manual
N-back task (NBT)		X	X	
Corsi	X		X	X
Go/No-Go (GNG)			X	X
WCST	X	X	X	
Dual task (DT)	X	X	X	

585 *Table 1: Selection of dimensions of the WP which will be used by K-means clustering for each task.*

First, WP5 was selected for all tasks due to its dimension importance. Indeed, whatever the CT, MWL from WP5 turned out the highest compared to the other WP dimensions (Cf. *WP questionnaire in Results section*).

590 Concerning NBT, the retained WP dimensions were WP4 and WP5. Indeed, Conover's post hoc comparisons indicated that MWL based on WP3 for NBT turned out significantly lower than for all the tasks (except with GNG). Moreover, NBT presented a set of letters in the center of the screen without spatial movement of the stimuli and the manual interactions were limited to the directional pad (left and right arrow only) and were not part of the logic of the task (only verbal working memory).

595 Concerning Corsi, the retained WP dimensions were WP3, WP5, and WP7. Indeed, Corsi showed a lower WP4 score than all the other tasks. Furthermore, verbal dimension was not supposed to come into play, given that the task was based on visual-spatial memory.

700 Regarding GNG, the retained WP dimensions were WP5, and WP7. We discarded WP3 as it presented a set of stimuli in the center of the screen (black disks and black squares) without spatial movement of these stimuli. We also discarded WP4, given that GNG appeared significantly lower than NBT and WCST (tasks involving verbal processing).

Concerning WCST, the retained WP dimensions were WP3, WP4 and WP5. We discarded WP7 given that manual interactions were not part of the logic of the task (which implied mostly mental flexibility).

705 Concerning DT, the retained WP dimensions were WP3, WP4 and WP5. Indeed, DT solicited visual-spatial memory (WP3) during the Corsi test and verbal dimension during the calculation task. We

discarded WP7 given that all its levels did not turn out significantly different (Cf. Table 4 in **Appendix**).

710 Once the WP dimensions selection step over, we realized a K-means clustering of the data with all
the selected subjective variables (Cf. **Table 1**) to determine the number of proposed clusters
associated with the quality criteria scores. We therefore performed K-means clustering in three ways.
The first aimed to perform the K-means model, optimizing it by the Silhouette score followed by BIC
and AIC values with a limit of 10 clusters (default setting on *JASP* software). Then, we compared
715 these scores with another way of clustering data: fixing $K = 3$ clusters.

Accordingly, for each selected subjective variables, we obtained 4 X 3 scores with 4 ways of
clustering and 3 clustering quality criteria (Cf. Table 5 in **Appendix**).

720 First, for the results analysis, for each quality – for instance, the AIC value - we identified among the
selected subjective variables (Cf. **Table 1**) which one gave the best AIC value score (gray cells in
Figure 5 in **Appendix**). Then, in a second step, we identified the selected subjective variables, fixed
at $K = 3$, which gave the two best AIC values. Green cells and light blue were respectively the best
selected subjective variables (based on AIC) fixed at 3, and the second one. This method allowed for
725 the selection of the selected subjective variables showing the best scores for $K = 3$ compared to the
scores obtained in the same conditions but with an optimized K .

Then, we wanted to determine whether the MWL values classified in each of the three classes of
clustering were actually obtained in the conditions believed to induce these MWL classes. Thus, we
examined if a high correlation occurred (ranging from "0"- no correlation to "100"- best correlation)
730 between the assignment of a MWL data in a MWL class by K-means and the data assignment by
complexity levels.

Concerning NBT, we compared the reliability of rankings on the basis of different combinations of
selected subjective variables based on complete NASA-TLX, WP4 and WP5. For each variable
735 selection, the clustering quality criteria for each clustering technique had been considered beforehand,
once optimized by the Silhouette score followed by the BIC and AIC values. Comparing the AIC
values (the lower the values the better the clustering results) when the classification was fixed at three
clusters or optimizing by AIC, the results ranged from 513.520 (shaded cell in Table 5 in **Appendix**)
to 790.680. Moreover, among the fixed $K = 3$, the NASA/WP5 selection obtained the lowest AIC
740 score (thus the best score) with 644.160 (which was relatively close to 513.520, the best score with
AIC optimization). Concerning BIC value (the lower the values the better the clustering results) with
the $K = 3$ fixed, the NASA/WP5 selection obtained the lowest BIC score with 708.600 (which was
relatively close to 667.610, the best score with BIC optimization). Concerning Silhouette score
(ranging from “-1”- poor clustering to “1”- very good clustering) with the fixed $K = 3$, the selection
745 NASA/WP4 obtained the highest Silhouette score (thus the best score) with 0.230 (which was
relatively close to 0.290, the best score with Silhouette optimization). Therefore, we were able to
obtain three classes of MWL classes with high quality indicators for the NASA/WP4 and NASA
/WP5 selections.

750 Concerning correlation coefficient (**Table 2**) between MWL classes with K-means and MWL classes
with complexity levels, we obtained respectively 0.64 and 0.65 for NASA/WP4 and NASA/WP5
selections.

Concerning Corsi, we compared different selected subjective variables based on complete NASA-
755 TLX, WP3, WP5 and WP7. Concerning AIC value with $K = 3$ fixed (Table 5 in **Appendix**), the
selection NASA/WP3 obtained the lowest AIC score with 573.400 (which was relatively close to

457.160, the best score with AIC optimization). Concerning BIC value with $K = 3$ fixed, the selection NASA/WP3 obtained the lowest BIC score with 637.840 (which was relatively close to 609.490, the best score with BIC optimization). Concerning Silhouette score with fixed $K = 3$, the selection NASA/WP3/WP5 obtained the highest Silhouette score with 0.260 (which was relatively close to 0.340, the best score with Silhouette optimization). We could also notice that NASA/WP5 selection consistently arrived in second place while being very close to the results of NASA/WP3. Therefore, three classes of MWL classes could be obtained with high quality indicators for NASA/WP3, NASA/WP5 and NASA/WP3/WP5 selections. Concerning correlation coefficient (**Table 2**) between MWL classes with K-means and MWL classes with complexity levels, we obtained respectively 0.79; 0.82 and 0.80 for NASA/WP3, NASA/WP5 and NASA/WP3/WP5 selections.

As an example, the **Figure 9** showed visually the overlap between the three clusters of subjective MWL (with NASA-TLX/WP5) for the Corsi test. The results were presented in a PCA (Principal Component Analysis) space, as the representation in the PCA space allowed to reduce the number of dimensions of the data (there were 7 dimensions of MWL). Thus, the part A showed the three MWL classes based on K-means. The part B showed the same distribution of points (than the part A), but through complexity level. We could notice that between the two techniques, there was a good agreement in the positioning of statistical individuals in the MWL classes. However, there was little or even no overlapping of points in part A. Concerning the part B, we observed some overlaps, particularly at the boundaries adjacent to level 2.

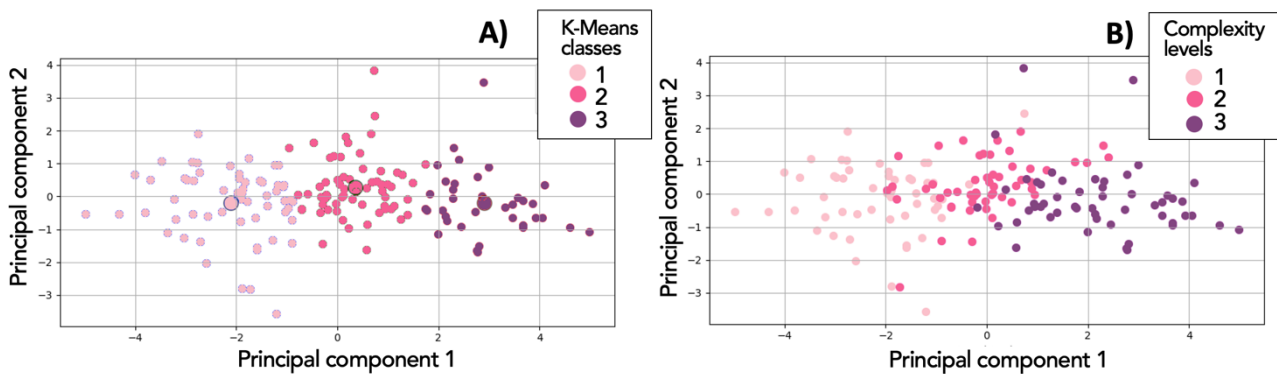


Figure 9: Three MWL classes (based on K-means) in Principal Component Analysis (PCA) space for Corsi test. In part A, visualization independently of complexity level. In part B, the same distribution of points (than the part A), but through complexity level.

Concerning GNG, we compared different selected subjective variables based on complete NASA-TLX, WP5 and WP7. Concerning AIC value and BIC value with $K = 3$ fixed (Table 5 in **Appendix**), the selection NASA/WP5, obtained the lowest AIC and BIC scores. Concerning Silhouette score with the fixed $K = 3$, the selection NASA/WP7, obtained the highest Silhouette score. In which concerns correlation coefficient (**Table 2**) between MWL classes with K-means and MWL classes with complexity levels, we obtained 0.65 for both NASA/WP5 and NASA/WP7 selections.

Concerning WCST, we compared different selected subjective variables based on complete NASA-TLX, WP3, WP4 and WP5. For all clustering quality criteria, NASA/WP5 selection showed the best scores with $K = 3$ fixed, closely followed by NASA/WP3 selection (Table 5 in **Appendix**). Moreover, when clustering was obtained by the Silhouette score, K-means proposed $K = 3$ for these two-variable selections. Therefore, three classes of MWL classes with high quality indicators could be obtained for NASA/WP3 and NASA/WP5. Concerning correlation coefficient (**Table 2**) between MWL classes with K-means and MWL classes with complexity levels, we obtained respectively 0.50 and 0.51 for NASA/WP3 and NASA/WP5 selections.

Finally, concerning DT, we compared different selected subjective variables based on complete NASA-TLX, WP3, WP4 and WP5. For all clustering quality criteria, NASA/WP5 selection showed the best scores with K = 3 fixed, closely followed by NASA/WP3 selection (Table 5 in Appendix). Therefore, without complexity levels, three MWL classes with high quality indicators could be obtained for NASA/WP3 and NASA/WP5 selections. Concerning correlation coefficient (Table 2) between MWL classes with K-means and MWL classes with complexity levels, we obtained respectively 0.75 and 0.76 for NASA/WP3 and NASA/WP5 selections.

Subjective combinaison	NBT						GNG					
	NASA + WP5			NASA + WP4			NASA + WP5			NASA + WP7		
Complexity level	1	2	3	1	2	3	1	2	3	1	2	3
MWL0	37	16	1	25	8	0	20	4	0	20	3	0
MWL1	15	32	26	27	37	20	31	33	13	31	34	14
MWL2	1	5	26	1	8	33	2	16	40	2	16	39
Correlation coefficient	0,65			0,64			0,65			0,65		

Subjective combinaison	Corsi								
	NASA + WP3			NASA + WP5			NASA + WP3 + WP5		
Complexity level	1	2	3	1	2	3	1	2	3
MWL0	41	6	0	46	6	0	43	5	0
MWL1	12	43	20	7	44	22	10	45	22
MWL2	0	4	33	0	3	31	0	3	31
Correlation coefficient	0,79			0,82			0,8		

Subjective combinaison	WCST						DT					
	NASA + WP3			NASA + WP5			NASA + WP3			NASA + WP5		
Complexity level	1	2	3	1	2	3	1	2	3	1	2	3
MWL0	34	6	4	34	6	4	39	2	0	39	1	0
MWL1	17	41	37	17	42	37	13	36	17	14	37	18
MWL2	2	6	12	2	5	12	1	15	36	0	15	35
Correlation coefficient	0,5			0,51			0,75			0,76		

Table 2: Correlation coefficient (Spearman) between MWL classes through K-means and complexity levels.

In conclusion, we could obtain three classes of subjective MWL for each of the five CTs while having high quality criteria, without considering complexity levels. When each quality criterion between tasks was compared, the scores varied relatively little. Regarding AIC value, Corsi showed the best score (573.400) and WCST the worst (705.550). For BIC value, Corsi showed the best score (637.840) and WCST the worst (769.990). Concerning Silhouette score, GNG showed the best score (0.270), closely followed by Corsi (0.260) and DT was the worst (0.180). Moreover, WCST was the only task which proposed naturally K = 3 clusters with Silhouette score optimization for several selected subjective variables. Hence, for all three clustering quality criteria, Corsi appeared systematically in the lead of the CTs and WCST often appeared in the bottom. Furthermore, WCST (for all selected subjective variables) was the CT with the lowest correlation between MWL classes with K-means and MWL classes with complexity levels (≤ 0.51), unlike Corsi and DT which showed the highest correlation (> 0.70).

MWL classification based on complexity levels and performance or performance only Procedure

For these analyses, we used the programming language Python (version Python 3.9.7). Moreover, we only presented the best result between the selected subjective variables from previous statistics to avoid overloading the reading.

Concerning NBT, NASA-TLX/WP4, with balanced accuracy, our model could determine subjective MWL based on *Complexity level*, *False alarms*, *Omissions* and *Reaction time for all items* with the

best cross-validation score equal to 57.6% ($\pm 3.64\%$). Then, the importance of the different variables through the PFI (all performance variables combined) was considered. We calculated the importance of the different variables on the accuracy score for NASA-TLX/WP4 (**Figure 10**). The LDA model was mainly based on *Complexity level* and *Expected responses* for the prediction. Without *Complexity level*, the accuracy of the model was equal to 36.12% ($\pm 2.64\%$) with five NBT performances: *No answers*, *Expected responses*, *False alarms*, *Omissions*, and *Reaction time for all items*.

Concerning Corsi, NASA-TLX/WP5, with balanced accuracy, our model could determine subjective MWL based on *Complexity level* only with the best cross-validation score equal to 79.97% ($\pm 0.0\%$). In **Figure 10**, the LDA model for NASA-TLX/WP5 was mainly based on *Complexity level* for the prediction. Without *Complexity level*, the accuracy of the model was equal to 53.28% ($\pm 3.48\%$) with four Corsi performances: *False cubes*, *Omissions*, *Exact sequences*, and *Total Time*.

Concerning GNG, NASA-TLX/WP5, with balanced accuracy, our model could determine subjective MWL based on *Complexity level*, *Expected responses* and *Omissions* with the best cross-validation score equal to 51.35% ($\pm 1.75\%$). In **Figure 10**, the LDA model for NASA-TLX/WP5 was based on *Complexity level*, *Expected responses* and *Reaction time for all answers* for the prediction. Without *Complexity level*, the accuracy of the model was equal to 47.74% ($\pm 1.9\%$) with three GNG performances: *Reaction time for correct answers*, *Reaction time for all answers*, and *Expected responses*.

Concerning WCST, NASA-TLX/WP5, with balanced accuracy, our model could determine subjective MWL based on *Complexity level* and the *Number of errors* with the best cross-validation score equal to 53.86% ($\pm 1.64\%$). In **Figure 10**, the LDA model for NASA-TLX/WP5 was based on *Complexity level* and *Expected responses* for the prediction. Without *Complexity level*, the accuracy of the model was equal to 42.88% ($\pm 3.43\%$) with four WCST performances: *Number of errors*, *Perseverative errors*, *Reaction time for all items* and *Expected responses*.

Finally, for DT, NASA-TLX/WP5, with balanced accuracy, our model could determine subjective MWL based on *Complexity level* with the best cross-validation score equal to 73.71% ($\pm 0.0\%$). In **Figure 10**, the LDA model for NASA-TLX/WP5 was mainly based on *Complexity level* for the prediction. Without *Complexity level*, the accuracy of the model was equal to 44.74% ($\pm 5.66\%$) with six DT performances such as *False cubes*, *Omissions* or *Expected responses*.

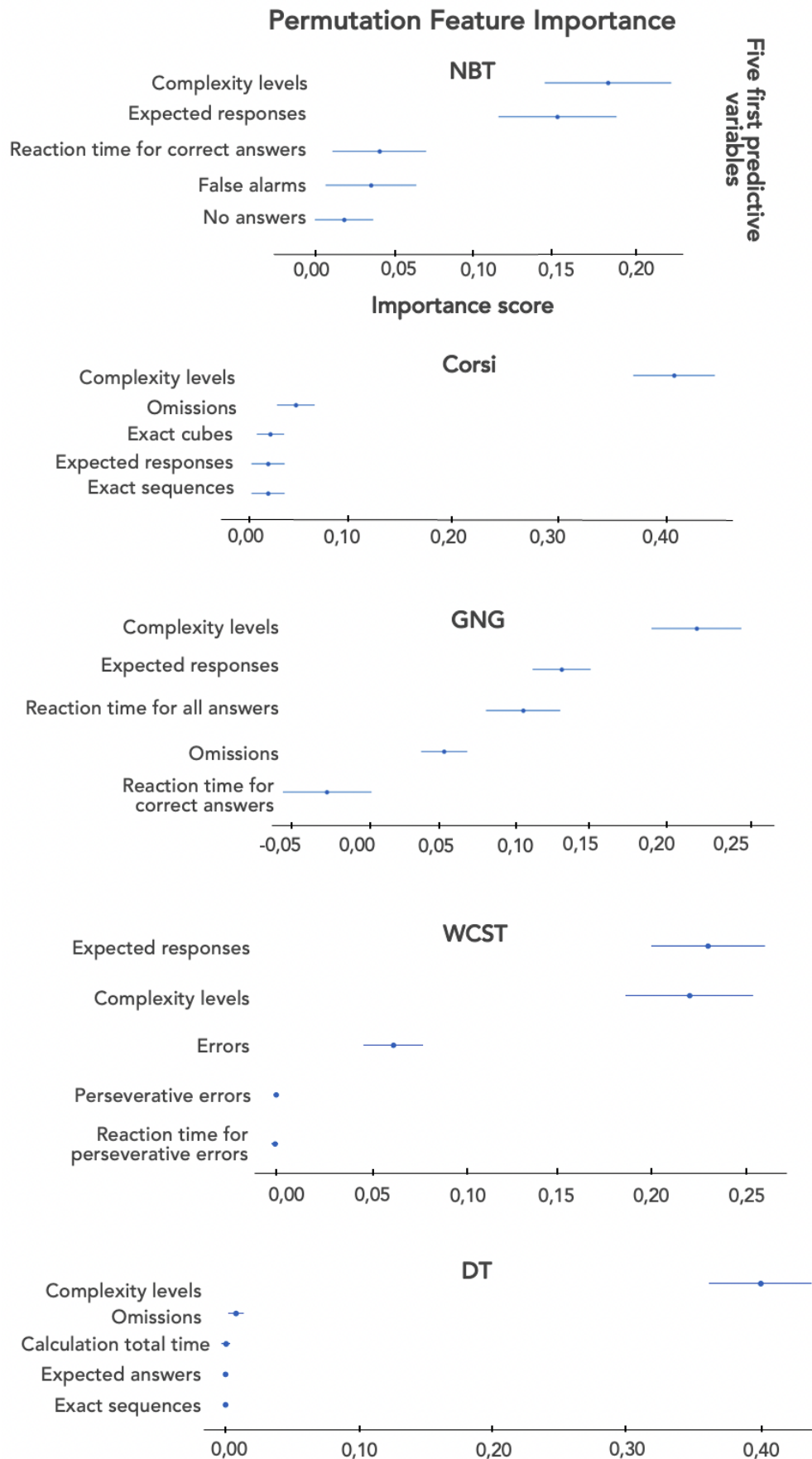


Figure 10: Bar graphs on the importance of five first performance variables for each task.

In conclusion, we were able to predict subjective MWL far beyond the chance threshold (equal to 33%) when considering *Complexity level* and performance as variables for all tasks. It seems relevant to note that the best prediction results were based on the selected subjective variables NASA-TLX/WP5 for all CTs except NBT. Therefore, this dimension turned out to be the most relevant one to consider for establishing the classification model. Moreover, Corsi and DT were the tasks with a cross-validation score appearing higher than 73% ($\pm 0.0\%$). With *Complexity level*, the MWL prediction model relied predominantly on *Complexity level* only (according to the PFIs). The other tasks performed less well, but the importance of the predictive variables was not focused mostly on the *Complexity level*.

Thus, when considering models only based on performance measures to predict MWL, the validation score decreased for Corsi and DT, but they remained above the chance threshold. Moreover, the validation scores also decreased for the other tasks, and Corsi remained the best candidate with a cross-validation score appearing higher than 50%. NBT was the worst with an accuracy smaller than 40%.

Discussion

The aim of this study was to test several candidate cognitive tasks (CTs) with distinct complexity levels. We then tried to rely on combined statistical methods to answer the two following questions:
1- Can we identify subjective mental workload classes corresponding to the complexity levels?
2- Can we predict these mental workload classes based on complexity levels and/or performance?

Conception of cognitive tasks with three complexity levels

First, we aimed to obtain three complexity levels in terms of impact on performance (*Expected responses*). As expected, NBT proved to be in line with previous studies (Arvaneh et al., 2015; Dimitrakopoulos et al., 2017; Ries et al., 2018). In this context, NBT served initially as a benchmark to calibrate the complexity levels of the other tasks. As expected, for at least two tasks (Corsi and WCST), several complexity levels generated several *Expected responses* levels. Concerning GNG and DT, the last complexity levels were not different in terms of performances. These results could be explained by the levels of requested solicitations which were too close between the last levels for the two tasks. For example, in the DT, adding a multiplication (highest complexity level) to a subtraction (intermediate level) did not impact performance. This result was not in line with So et al. (2017) study that obtained significant differences in performance measures between an intermediate level of subtraction and a higher level with multiplication. However, the So et al. (2017) study showed a limit as it mixed multiplication and division operations during the last level, making the impact of the two operations difficult to distinguish. Perhaps a division would have given more significant differences. Nevertheless, based on our pre-test calibration phase, we could observe that division would have led to a too high difficulty with respect to the other tasks.

In conclusion and to reach our first objective, the priority was to obtain three complexity levels that generated three levels of *Expected responses*, which NBT, Corsi and WCST demonstrated. Next, we aimed to know if these complexity levels also generated three MWL classes.

Tasks complexity level to induce MWL classes

In relation to the definition of MWL, which is a multidimensional concept, we systematically considered two questionnaires from two models of MWL: NASA-TLX and WP questionnaires. Concerning WP dimensions, for some tasks, all complexity levels generated distinct classes of MWL, like WP3-*Spatial processing* for the Corsi.

However, no WP dimension could discriminate all MWL classes for GNG and DT. These last results were in contradiction with the Rubio study (2014) which observed that WP was the only questionnaire to reveal differences due to the task complexity. Nevertheless, despite a least

discrimination to complexity level, WP questionnaire appeared worthwhile when measuring the attentional resources proportion used in a particular sensory-motor dimension as specified in Tsang and Velasquez (1996). For example, in our study, Corsi and DT were the CTs generating the highest MWL based on spatial processing. These results were coherent with the logic of the tasks based on spatial memory.

Concerning NASA-TLX, all complexity levels generated distinct levels of overall MWL for all CTs. However, across tasks, non-equivalence occurred between the overall MWL classes. Thus, the levels obtained were relative, not absolute, and therefore depended on the task despite a quite close “orders” of values. Moreover, for the overall MWL classes of all tasks, the averages varied between approximately 100 and 300 on a scale of 600. Thus, the three levels of overall MWL were not in the intermediate MWL zone but in the first half of the MWL, within a low and intermediate zone of MWL. Even though we didn’t expect this result, it made us consider that the tasks offered allowed to reach levels of MWL being fairly close but nevertheless distinguishable and often difficult to obtain with subjective scales. Once this level of accuracy in discriminating MWL classes potentially reached, we could add a complexity level to the tasks. For this purpose, the Corsi test was the best candidate since, among all the tasks, it allowed the most distinct overall NASA-TLX levels. This was a first argument for not considering the NBT as a reference task for MWL measurement and modeling.

Regarding the measures of each of NASA-TLX dimensions, they demonstrated that the dimensions contributed differently to the overall MWL score. This result was in line with previous findings (Rubio et al., 2014; Fallahi et al., 2016; Longo, 2017) where the overall score did not allow the detection of subtle variations. Nevertheless, NASA-TLX dimensions could be used to determine which dimensions were pulling up or down the overall NASA-TLX. For example, for all complexity levels of our NBT, *Physical demand* turned out the lowest compared to the other NASA-TLX dimensions. This result was in line with Malakoutikhah et al. (2021) study which had also compared the six dimensions of NASA-TLX for NBT and observed that *Physical demand* turned out the lowest compared to the other NASA-TLX dimensions. It was coherent with the solicitations of our task since manual interactions were limited to keystrokes or mouse/touchpad movements.

Moreover, this study confirmed the complementary of the questionnaires based on different methodological or theoretical approaches. While the WP questionnaire concerned the saturation of the multiple pools of attentional resources, the NASA-TLX questionnaire concerned, in part, the impact of external factors on subjective MWL.

Concerning our hypothesis **H1**, we could conclude that our protocol provided different overall MWL classes in relation to the complexity level. To this aim, Corsi and DT were the best tasks and WCST was the worst. Indeed, the NASA-TLX questionnaire is known to show a high correlation with performance (Rubio et al. 2004). This may explain why MWL based on NASA-TLX did not allow three distinct levels for all dimensions of GNG for which performances were not impacted by the third complexity level. However, through WCST which had three distinct levels of performance but not three levels of overall MWL, we could observe the limit of using only performance for MWL measurement. Performance could sometimes degrade as the complexity level increased, but MWL did not increase linearly. In our study, WCST turned out to be a perfect example of the non-linear relationship between subjective MWL and performance.

Correspondence between MWL classes considering the complexity level

To ensure that the three complexity levels of each task could allow distinct classes of MWL, we decided to consider the correlation between MWL classes of values obtained with a clustering method

(considering only subjective measures of MWL as variables) and MWL classes of values obtained with complexity levels.

First, among the CTs, Corsi allowed the best clustering, that is, the most distinct MWL classes, this task being the one for which the most dimensions of MWL allowed this distinction between classes.

Hence the interest in considering all the dimensions of MWL rather than just the overall value as some authors did (Radüntz, 2017; Guan et al., 2021).

Moreover, if we compared the MWL classes obtained via the labels of complexity level or via the clustering, we obtained a good correspondence and more particularly for Corsi. Thus, our **H1** has been confirmed. Thus, the Corsi test allowed the best grouping into MWL classes. Moreover, these classes corresponded well to what was expected via the complexity levels. These results were the second argument for not considering the NBT as a reference task. Furthermore, as far as we knew, no previous study had ascertained the observation of three distinct classes of MWL by combining two analytics methods as we did by considering the correspondence between MWL classes with K-means and MWL classes with complexity levels. Our approach of considering the correlation between two different ways of grouping data was a first in the scientific literature.

Proposal of a predictive model of MWL classes

The Corsi test turned out to be the best task to predict MWL with complexity levels and performance. Therefore, this task was well dimensioned in terms of complexity levels. Thus, Corsi demonstrated a high level of reliability to induce a priori (at least at the beginning of the activity) the class of MWL in which the person should be. This result was the third argument for not considering the NBT as a reference task. Using NBT as a reference to establish a MWL model, as several authors (Dimitrakopoulos et al., 2017; Beh et al., 2021; Malakoutikhah et al., 2021) did, could explain the increasing number of studies using it to obtain several levels of MWL. A selectivity bias due to the number of NBT-based studies for MWL could have been introduced. Thanks to our analysis, we pointed out the limits of NBT. Concerning the Corsi test, we found different MWL classes, and these classes were correlated to those obtained by considering the MWL data via the complexity level. Moreover, for Corsi, we could propose a model based on performance and complexity levels predicting MWL with a good accuracy. Furthermore, Corsi had simple instructions and was not socially marked, as illiterates and people with different alphabets could use it. Finally, it appeared to be a CT allowing constant overall MWL gaps and easy to modify in complexity level with a high number of possibilities. In consequence, among our five CTs, the Corsi test proved to be the best candidate to fulfill our first objective.

A model to predict mental workload only with performance

For the second objective of this study, we aimed to obtain a “real time” indicator in order to identify the “shifts” of MWL during the activity. This was another critical aspect of our work as we knew that MWL evolved during the activity due to its multidimensional nature. Thus, we decided to focus only on performance data during the task, neglecting physiological ones considered as difficult to interpret and with validity problems. Therefore, we tried to circumvent the limits of the correspondence between MWL and performance data by favoring the number and thus the sensitivity of the performance measurements performed. Nevertheless, when the MWL predictive models were only based on performance measures without including the complexity level, the results decreased for all the tasks despite the result remaining quite good for Corsi and DT. It seems relevant to note that Corsi was the only task with an accuracy appearing higher than 50% (which was above the chance threshold of about 33%). The number of performance dimensions can explain this result. Corsi and DT had the best predictions and had performance dimensions higher than the other tasks (7 and 9 for Corsi and DT respectively). Thus, multiplying the performance data was a good way to make this real-time indicator become more reliable and sensitive. Thus, the **H2** has been confirmed.

115 Nevertheless, even if the prediction level was still much higher than the chance level for these two
tasks, adjusting the complexity level only on these models did not seem sufficient. These results were
in line with studies indicating that performance measures could not, of themselves, describe MWL,
since the operators could potentially vary effort to maintain a constant performance level (Reid and
Nygren, 1988; Cain, 2007; Raufaste et al. 2014; Radüntz, 2017). Although performance measures
120 could account for MWL during the activity, we must be aware of their main limit. Thus, to improve
our model, we should carry it out on other measures of MWL. Therefore, even though those
psychophysiological measures had several constraints, they could be worthwhile to improve our
models. It could indeed become possible to triangulate the three categories of measures (subjective,
performance and psychophysiological) to better understand an operator's MWL (Charles and Nixon,
125 2019; Longo, 2022). As a matter of fact, considering MWL through the prism of these three categories
of measures would overcome the limitations of each measure. The future studies measuring MWL
through physiological measures should require a reference model of subjective MWL being close to
the essence of MWL (Hart and Staveland, 1988) like our model which was based on two
complementary models of subjective MWL.

130 **Contribution to the body of knowledge**

Firstly, it is widely accepted that MWL is a *multidimensional concept* (Hancock et al. 2021), and our
results support this by showing that the dimensions vary depending on the activity. Indeed, the
NASA-TLX and WP questionnaires are complementary since they are sensitive to different sources
135 of MWL. Thus, we were able to demonstrate that the cognitive tasks in our study induced different
MWL classes (with differences according to the task) depending on the complexity level of the
activity (mental demands, time pressure), the strategies used (performance, mental effort) and the
individual's emotional state (frustration). However, some dimensions measured by the WP did not
appear to show significant variation across tasks, suggesting that cognitive tasks more or less saturate
140 the attentional resources mobilized in each resource pool of Wickens' model (1984, 1987, 2008). In
that we confirm that MWL can be defined as *the degree of activation of a finite pool of resources,
limited in capacity, while cognitively processing a primary task over time*. Thus, the variations in the
dimensions of MWL solicited as a function of the tasks accrediting that MWL enables individuals to
cope with static task demands, by devoted effort and attention (Longo et al., 2022). Moreover, our
145 results confirmed that for the same task demand, the profile of solicitation and dimensions of MWL
are task-specific. Therefore, it's essential to carefully choose the type of measure used based on the
task's characteristics to avoid missing any effects by selecting an unsuitable questionnaire.

Secondly, we have demonstrated that performances can serve as a predictor of MWL, supporting
models that establish a link between task demands, MWL and, performance (Hart and Staveland,
150 1988; De Waard, 1996; Young et al., 2015). Nevertheless, we nuanced these models in that
performance predictors must be sufficiently numerous and varied to be correctly linked to changes in
MWL. Our results also support models that emphasize the contribution of exogenous factors like the
stress/strain model (Karasek, 1979; Raufaste et al., 2004). Indeed, the prediction of MWL increased
for all the tasks when we included the complexity level (corresponding to task demands) as a
155 predictor.

Thirdly, we proposed a protocol that can induce a desired MWL class at the beginning of an activity,
at least for the Corsi test. Indeed, our results suggest that the NBT may not be a suitable reference
task to model the MWL, as is currently done in some studies (Dimitrakopoulos et al., Ries et al.,
2018; 2017; Beh et al., 2021; Malakoutikhah et al., 2021). Among our five CTs, Corsi proved to be
160 a better candidate as it reliably induced different MWL classes, allowing us to predict the expected
MWL.

Conclusion

We tested five context-free tasks, all providing three distinct levels of overall MWL. Moreover, thanks to combined statistical methods, we could evaluate the distinction of three MWL classes associated with three complexity levels. Among our five CTs, the Corsi test obtained different MWL classes reliably enough to make predictions about the expected MWL. Consequently, this study provides a foundation for future research aimed at predicting the MWL class before the activity and adjust the complexity level to keep the desired MWL class. For this purpose, multiplying the performance data was a good way to obtain a more reliable and sensitive real-time indicator. This recommendation could also be applied to the learning context with the aim to measure or predict cognitive load. Thus, our future objective is to improve this model with psychophysiological measurements (like EEG data) of MWL available in real time during a task.

Limitations

Our experiment was conducted in a remote environment. The results could be different in presence tasks. Moreover, the subjective MWL model could be enriched with other factors that could influence MWL such as internal factors (emotions or expertise) or external factors (the design for instance). Besides, the impact of design on MWL is a research question currently studied within our team.

Captions

Figure 1: Conceptual framework of the mental workload's factors

Figure 2: New possible use of the MWL concept in emerging applications such as medical remediation or Virtual Reality: (a) Online adjustment of task complexity to maintain optimized MWL or (b) assessment of the impact of a certain MWL level on different variables (such as stress or presence).

Figure 3: Experimental design of the study where participants were randomly assigned tasks.

Figure 4: Diagram with all the steps of data analysis for the two research hypotheses.

Figure 5: Performance in terms of Expected responses according to the cognitive tasks and the levels.

Figure 6: Mental workload based on overall NASA-TLX score according to the type of task and the complexity level.

Figure 7: Scores of the 6 dimensions of NASA-TLX depending on the task and complexity level.

Figure 8: Mental workload score of four dimensions of WP questionnaire (WP3, WP4, WP5 and WP7) depending on the task and complexity level.

Figure 9: Three MWL classes (based on K-means) in Principal Component Analysis (PCA) space for Corsi test. In part A, visualization independently of complexity level. In part B, the same distribution of points (than the part A), but through complexity level.

Figure 10: Bar graphs on the importance of five first performance variables for each task.

Conflict of interest

The authors declare that the research was conducted in the absence of any commercial or financial relationships that could be construed as a potential conflict of interest.

Author contributions

LEL wrote the protocol with IMP's regard. SR was responsible for technical and computational work of the study. LEL conducted the experiment. Signal processing, data analysis, and interpretation were performed by LEL, IM, SM, and TLJ. The manuscript was written by LEL with IM's regard. To finish, all authors read and approved the final manuscript.

Acknowledgements

The authors want to thank all participants for voluntarily taking part in this study, Sébastien Maire that implemented the task battery under the supervision of LEL and the company Onepoint and ANRT (in French) for National Association of Research and Technology, which financed this study.

Supplementary material

The Supplementary Material for this article can be found online at:
<https://www.frontiersin.org/articles/...>

References

Abibullaev, B., & An, J. (2012). Classification of frontal cortex haemodynamic responses during cognitive tasks using wavelet transforms and machine learning algorithms. *Medical engineering & physics*, 34(10), 1394-1410.

Al-Mohair, H. K., Saleh, J. M., & Suandi, S. A. (2015). Hybrid human skin detection using neural network and K-means clustering technique. *Applied Soft Computing*, 33, 337-347.

Arvaneh, M., Umilta, A., & Robertson, I. H. (2015). Filter bank common spatial patterns in mental workload estimation. In *2015 37th Annual International Conference of the IEEE Engineering in Medicine and Biology Society (EMBC)*, (pp. 4749-4752). Milan: IEEE.

Atkinson, R. C., & Shiffrin, R. M. (1968). Human memory: A proposed system and its control processes. In K. W. Spence & J. T. Spence (Eds.), *The psychology of learning and motivation: Advances in research and theory, Vol. II* (pp. 89-195). New York: Academic press.

Averty, P., Collet, C., Dittmar, A., Athènes, S., & Vernet-Maury, E. (2004). Mental workload in air traffic control: an index constructed from field tests. *Aviation, space, and environmental medicine*, 75(4), 333-341.

Beh, W. K., & Wu, Y. H. (2021). MAUS: A Dataset for Mental Workload Assessment on N-back Task Using Wearable Sensor. In: *arXiv preprint arXiv:2111.02561*.

Bel, O. M. S. (2020). *Dynamic performance enhancement of scientific networks and systems*. PhD. thesis, University of California, Santa Cruz.

Berka, C., Levendowski, D. J., Lumicao, M. N., Yau, A., Davis, G., Zivkovic, V. T., ... & Craven, P. L. (2007). EEG correlates of task engagement and mental workload in vigilance, learning, and memory tasks. *Aviation, space, and environmental medicine*, 78(5), B231-B244.

Bornemann, E. (1942). Untersuchungen über den Grad der geistigen Beanspruchung, 2. Teil: Praktische Ergebnisse. *Arbeitsphysiologie* 12, 173-191.

Byers, J. C., Bittner, A. C., Hill, S. G. (1989). Traditional and raw task load index (TLX) correlations: are paired comparisons necessary? In Mital, A. (Ed.), *Advances in industrial ergonomics and safety* (pp. 481-485). London: Taylor and Francis.

Cain, B. (2007). *A review of the mental workload literature*. Technical report, Defence Research and Development Toronto, Canada.

- 160 Carelli, L., Solca, F., Faini, A., Meriggi, P., Sangalli, D., Cipresso, P., et al. (2017). Brain-computer interface for clinical purposes: cognitive assessment and rehabilitation. *BioMed Research International*, vol. 2017, 1695290.
- 165 Cegarra, J., & Morgado, N. (2009). Étude des propriétés de la version francophone du NASA-TLX. In *2009 5ème Colloque de Psychologie Ergonomique* (pp. 233-239). Nice, EPIQUE.
- Charles, R. L., and Nixon, J. (2019). Measuring mental workload using physiological measures: a systematic review. *Applied Ergonomics*, 74, 221–232.
- 170 Cinaz, B., Arnrich, B., La Marca, R., & Tröster, G. (2013). Monitoring of mental workload levels during an everyday life office-work scenario. *Personal and ubiquitous computing*, 17(2), 229-239.
- Corsi, P.M. (1972). *Human memory and the medial temporal region of the brain*. PhD. thesis, McGill University, Montreal, Montreal.
- 175 Curran, E. A., & Stokes, M. J. (2003). Learning to control brain activity: A review of the production and control of EEG components for driving brain–computer interface (BCI) systems. *Brain and cognition*, 51(3), 326-336.
- 180 Cuvelier, L. (2012). Mesures quantitatives de la charge mentale : avancées, limites et usages pour la prévention des risques professionnels. *Archives des Maladies Professionnelles et de l'Environnement*, 73(2), 120-126.
- Dehais, F., Lafont, A., Roy, R., & Fairclough, S. (2020). A neuroergonomics approach to mental workload, engagement and human performance. *Frontiers in neuroscience*, 14, 268.
- 185 De Waard, D. (1996). *The measurement of drivers' mental workload*. Ph.D. thesis, University of Groningen, Traffic Research Centre, Haren, The Netherlands.
- 190 Dimitrakopoulos, G. N., Kakkos, I., Dai, Z., Lim, J., deSouza, J. J., Bezerianos, A. et Sun, Y. (2017). Task-independent mental workload classification based upon common multiband EEG cortical connectivity. *IEEE Transactions on Neural Systems and Rehabilitation Engineering*, 25(11), 1940–1949.
- 195 Figalová, N., Chuang, L. L., Pichen, J., Baumann, M., & Pollatos, O. (2022). Ambient light conveying reliability improves drivers' takeover performance without increasing mental workload. *Multimodal Technologies and Interaction*, 6(9), 73.
- Foy, H. J., & Chapman, P. (2018). Mental workload is reflected in driver behaviour, physiology, eye movements and prefrontal cortex activation. *Applied ergonomics*, 73, 90-99.
- 200 Galy, E., Cariou, M., & Mélan, C. (2012). What is the relationship between mental workload factors and cognitive load types? *International Journal of Psychophysiology*, 83(3), 269-275.
- 205 Godefroy, O., & les membres du GREFEX. (2008). *Fonctions exécutives et pathologies neurologiques et psychiatriques : Évaluation en pratique clinique*. Marseille : Solal.
- Guan, K., Chai, X., Zhang, Z., Li, Q., & Niu, H. (2021). Evaluation of Mental Workload in Working Memory Tasks with Different Information Types Based on EEG. In *2021 43rd Annual International*

- 210 *Conference of the IEEE Engineering in Medicine & Biology Society (EMBC)* (pp. 5682-5685). Mexico, IEEE.
- Hancock, G. M., Longo, L., Young, M. S., & Hancock, P. A. (2021). Mental workload. *Handbook of human factors and ergonomics*, 203-226.
- 215 Hart, S.G. & Staveland, L.E. (1988). Development of NASA-TLX (Task Load Index): results of empirical and theoretical research. In P.A. Hancock & N. Meshkati (Eds.), *Human Mental Workload* (pp. 139-183). Amsterdam: North-Holland Press.
- Heaton, R. K (1981). *Wisconsin Card Sorting Test Manual*. Psychological Assessment Resources, 220 Incl., Odessa, FL.
- ISO (2017). *ISO 1075-1:2017 - Ergonomic Principles Related to Mental Workload - Part 1: General Issues and Concepts, terms and definitions*. Geneva: ISO.
- 225 Katmah, R., Al-Shargie, F., Tariq, U., Babiloni, F., Al-Mughairbi, F., & Al-Nashash, H. (2021). A review on mental stress assessment methods using EEG signals. *Sensors*, 21(15), 5043.
- Karasek Jr, R. A. (1979). Job demands, job decision latitude, and mental strain: Implications for job redesign. *Administrative science quarterly*, 285-308.
- 230 Kessels, R. P., Van Zandvoort, M. J., Postma, A., Kappelle, L. J., & De Haan, E. H. (2000). The Corsi block-tapping task: standardization and normative data. *Applied neuropsychology*, 7(4), 252-258.
- 235 Kirchner, W. K. (1958). Age differences in short-term retention of rapidly changing information. *Journal of experimental psychology*, 55(4), 352.
- Kramer, A.F. (1991). Physiological metrics of mental workload: A review of recent progress. Multiple task performance. In: D.L. Damos (Ed.), *Multiple-task performance* (pp. 279-328). London: 240 Taylor & Francis.
- Leppink, J., Paas, F., Van Gog, T., van Der Vleuten, C. P., & Van Merriënboer, J. J. (2014). Effects of pairs of problems and examples on task performance and different types of cognitive load. *Learning and instruction*, 30, 32-42.
- 245 Li, W., Li, R., Xie, X., & Chang, Y. (2022). Evaluating mental workload during multitasking in simulated flight. *Brain and Behavior*, 12(4), e2489.
- Longo, L. (2017). Subjective usability, mental workload assessments and their impact on objective human performance. In *IFIP Conference on Human- Computer Interaction* (pp. 202–223). Mumbai, 250 Springer International Publishing.
- Longo, L., Wickens, C. D., Hancock, P. A., & Hancock, G. M. (2022). Human Mental Workload: A Survey and a Novel Inclusive Definition. *Frontiers in psychology*, 13, 883321.
- 255 Malakoutikhah, M., Kazemi, R., Rabiei, H., Alimohammadlou, M., Zare, A., & Hassanipour, S. (2021). Comparison of mental workload with N-Back test: A new design for NASA-task load index questionnaire. *International Archives of Health Sciences*, 8(1), 7-13.

- 260 Mandrick, K. (2013). *Application de la spectroscopie proche infrarouge dans la discrimination de la charge de travail*. Ph.D. thesis, University of Montpellier I, Montpellier.
- Martin, C. (2013). *La gestion de la charge mentale des contrôleurs aériens en-route : apports de l'eye-tracking dans le cadre du projet européen SESAR*. Ph.D. thesis, University of Toulouse,
265 Toulouse.
- Meijman, T.F. & O'Hanlon, J.F. (1984). Workload. An introduction to psychological theories and measurement methods. In P.J.D. Drenth, H. Thierry, P.J. Willems & C.J. de Wolff (Eds.), *Handbook of Work and Organizational Psychology* (pp. 257-288). New York: Wiley.
- 270 Mélan, C., & Cascino, N. (2014). A multidisciplinary approach of workload assessment in real-job situations: Investigation in the field of aerospace activities. *Frontiers in psychology*, 5, 964.
- 275 Miyake, A., Friedman, N. P., Emerson, M. J., Witzki, A. H., Howerter, A., & Wager, T. D. (2000). The unity and diversity of executive functions and their contributions to complex "frontal lobe" tasks: A latent variable analysis. *Cognitive Psychology*, 41(1), 49-100.
- Milleville-Pennel, I., & Charron, C. (2015). Do mental workload and presence experienced when driving a real car predispose drivers to simulator sickness? An exploratory study. *Accident Analysis & Prevention*, 74, 192-202.
- 280 Miller, S. (2001). *Workload measures*. Iowa City, IA: National Advanced Driving Simulator.
- Miyake, A., Friedman, N. P., Emerson, M. J., Witzki, A. H., Howerter, A., & Wager, T. D. (2000). The unity and diversity of executive functions and their contributions to complex "frontal lobe" tasks: A latent variable analysis. *Cognitive psychology*, 41(1), 49-100.
- 285 Mohanavelu, K., Poonguzhali, S., Janani, A., & Vinutha, S. (2022). Machine learning-based approach for identifying mental workload of pilots. *Biomedical Signal Processing and Control*, 75, 103623.
- 290 Morey, R. D. (2008). Confidence intervals from normalized data: A correction to Cousineau (2005). *Tutorials in Quantitative Methods for Psychology*, 4(2), 61-64.
- Muñoz-de-Escalona, E., & Cañas, J. J. (2019). Latency differences between mental workload measures in detecting workload changes. In *Communications in computer and information science* (pp. 131–146). Berlin, Springer.
- 295 Naismith, L. M., Cheung, J. J., Ringsted, C., & Cavalcanti, R. B. (2015). Limitations of subjective cognitive load measures in simulation-based procedural training. *Medical education*, 49(8), 805-814.
- 300 Nelson, H. E. (1976). A modified card sorting test sensitive to frontal lobe defects. *Cortex*, 12(4), 313-324.
- Orru G., & Longo, L. (2019). The evolution of cognitive load theory and the measurement of its
305 intrinsic, extraneous and germane loads: a review. In Longo, L., Leva, MC. (Eds.) *Human mental workload: models and applications* (pp. 23–48). Berlin : Springer.

- 310 Paxion, J. (2014). *Complexité des situations, expérience, tension et vigilance : quels impacts sur la charge de travail et les performances de jeunes conducteurs*. Ph.D. thesis, University of Aix-Marseille, France.
- 315 Poirier, F., Condat, A., Laufer, L., Rosenblum, O., & Cohen, D. (2019). Non-binarité et transidentités à l'adolescence : une revue de la littérature. *Neuropsychiatrie de l'Enfance et de l'Adolescence*, 67(5-6), 268-285.
- Radüntz, T. (2017). Dual frequency head maps: A new method for indexing mental workload continuously during execution of cognitive tasks. *Frontiers in physiology*, 8, 1019.
- 320 Raufaste, É., Daurat, A., Mélan, C., & Ribert-Van De Weerd, C. (2004). Aspects intensifs de la cognition en situation de travail. In Darses, F., & Hoc, J. M. (Eds.), *Psychologie ergonomique : tendances actuelles* (pp. 175-199). Presses Universitaires de France.
- 325 Raufi, B., & Longo, L. (2022). An Evaluation of the EEG alpha-to-theta and theta-to-alpha band Ratios as Indexes of Mental Workload. *Frontiers in Neuroinformatics*, 16, 44.
- Reid, G.B., & Nygren, T.E. (1988). The subjective workload assessment technique: A scaling procedure for measuring mental workload. In P.A. Hancock & N. Meshkati (Eds.), *Human mental workload* (pp. 185–218). Amsterdam: Elsevier.
- 330 Ries, A. J., Slayback, D., & Touryan, J. (2018). The Effect of Visual Task Difficulty on the Fixation-Related Lambda Response. In *2016 49th Hawaii International Conference on System Sciences (HICSS)*, (pp. 1226–1235), Hawaii, HICSS.
- 335 Rubio, S., Díaz, E., Martín, J., & Puente, J. M. (2004). Evaluation of subjective mental workload: A comparison of SWAT, NASA-TLX, and workload profile methods. *Applied psychology*, 53(1), 61-86.
- Schlegel, R. E. (1993). Driver mental workload. In B. Peacock & W. Karwowski (Eds.), *Automotive ergonomics* (pp. 359–382). London: Taylor & Francis.
- 340 Shaheen, N., Raza, B., Shahid, A. R., & Alquhayz, H. (2020). A novel optimized case-based reasoning approach with K-means clustering and genetic algorithm for predicting multi-class workload characterization in autonomic database and data warehouse system. *IEEE Access*, 8, 105713-105727.
- 345 Shannon, C. E., & Weaver, W. (1949). *The mathematical theory of communication*. Urbana, IL: University of Illinois Press.
- 350 Sirevaag, E. J., Kramer, A. F., Wickens, C. D., Reisweber, M., Strayer, D. L., & Grenell, J. F. (1993). Assessment of Pilot Performance and Mental Workload in Rotary Wing Aircraft. *Ergonomics*, 36(9), 1121-1140.
- 355 So, W. K., Wong, S. W., Mak, J. N., & Chan, R. H. (2017). An evaluation of mental workload with frontal EEG. *PloS one*, 12(4), e0174949.
- Spérandio, J.-C. (1988). *Ergonomie du travail mental*. Paris: Masson.

Sweller, J. (1988). Cognitive load during problem solving: Effects on learning. *Cognitive science*, 12(2), 257-285.

Sweller, J. (2010). Element interactivity and intrinsic, extraneous, and germane cognitive load. *Educational psychology review*, 22(2), 123–138.

Tran, Y., Craig, A., Craig, R., Chai, R., & Nguyen, H. (2020). The influence of mental fatigue on brain activity: Evidence from a systematic review with meta-analyses. *Psychophysiology*, 57(5), 1-17.

Tsang, P.S., Velazquez, V.L. (1996). Diagnosticity and multidimensional subjective workload ratings. *Ergonomics* 39(3), 358–381.

Van Merriënboer, J. J., & Sweller, J. (2010). Cognitive load theory in health professional education: design principles and strategies. *Medical education*, 44(1), 85-93.

Vidal, J., Mills, T., Pang, E. W., & Taylor, M. J. (2012). ResPZhangonse inhibition in adults and teenagers: spatiotemporal differences in the prefrontal cortex. *Brain and cognition*, 79(1), 49-59.

Yoo, S. H., Woo, S. W., Shin, M. J., Yoon, J. A., Shin, Y. I., & Hong, K. S. (2020). Diagnosis of mild cognitive impairment using cognitive tasks: A functional near-infrared spectroscopy study. *Current Alzheimer Research*, 17(13), 1145-1160.

Young, M. S., Brookhuis, K. A., Wickens, C. D., & Hancock, P. A. (2015). State of science: mental workload in ergonomics. *Ergonomics*, 58(1), 1-17.

Young, J. Q., John, M., Thakker, K., Friedman, K., Sugarman, R., Sewell, J. L., & O'sullivan, P. S. (2021). Evidence for validity for the cognitive load inventory for handoffs. *Medical Education*, 55(2), 222-232.

Wickens, C.D. (1984). Processing resources in attention. In R. Parasuraman & D.R. Davis (Eds.), *Varieties of Attention* (pp. 63-101). New York: Academic Press.

Wickens, C. D. (1987). Attention. In P. A. Hancock (Ed.), *Human Factors Psychology* (pp. 29-80). New York: North- Holland Press.

Wickens, C. D., Hollands, J. G., Banbury, S., & Parasuraman, R. (2015). Mental workload, stress, and individual differences: cognitive and neuroergonomic perspectives. In *Engineering Psychology and human performance* (pp. 346-376). New Jersey: Pearson Education.

Wierwille, W.W. & Eggemeier, F.T. (1993). Recommendation for mental workload measurement in a test and evaluation environment. *Human Factors*, 35, 263-281.

Zhang, P., Wang, X., Zhang, W. et Chen, J. (2018). Learning spatial–spectral–temporal eeg features with recurrent 3d convolutional neural networks for cross-task mental workload assessment. *IEEE Transactions on neural systems and rehabilitation engineering*, 27(1) : 31–42.