



HAL
open science

Ricercar Data Lab - Early Music Database

Sarra Ferjani, Suzy Piat, Hyacinthe Belliot, Vincent Besson, Guillaume Avocat

► **To cite this version:**

Sarra Ferjani, Suzy Piat, Hyacinthe Belliot, Vincent Besson, Guillaume Avocat. Ricercar Data Lab - Early Music Database. 10th International Conference on Digital Libraries for Musicology, Nov 2023, Milan, Italy. . hal-04284760

HAL Id: hal-04284760

<https://hal.science/hal-04284760>

Submitted on 16 Nov 2023

HAL is a multi-disciplinary open access archive for the deposit and dissemination of scientific research documents, whether they are published or not. The documents may come from teaching and research institutions in France or abroad, or from public or private research centers.

L'archive ouverte pluridisciplinaire **HAL**, est destinée au dépôt et à la diffusion de documents scientifiques de niveau recherche, publiés ou non, émanant des établissements d'enseignement et de recherche français ou étrangers, des laboratoires publics ou privés.



Distributed under a Creative Commons Attribution - NonCommercial - NoDerivatives 4.0 International License

Ricercar Data Lab

Early Music Database

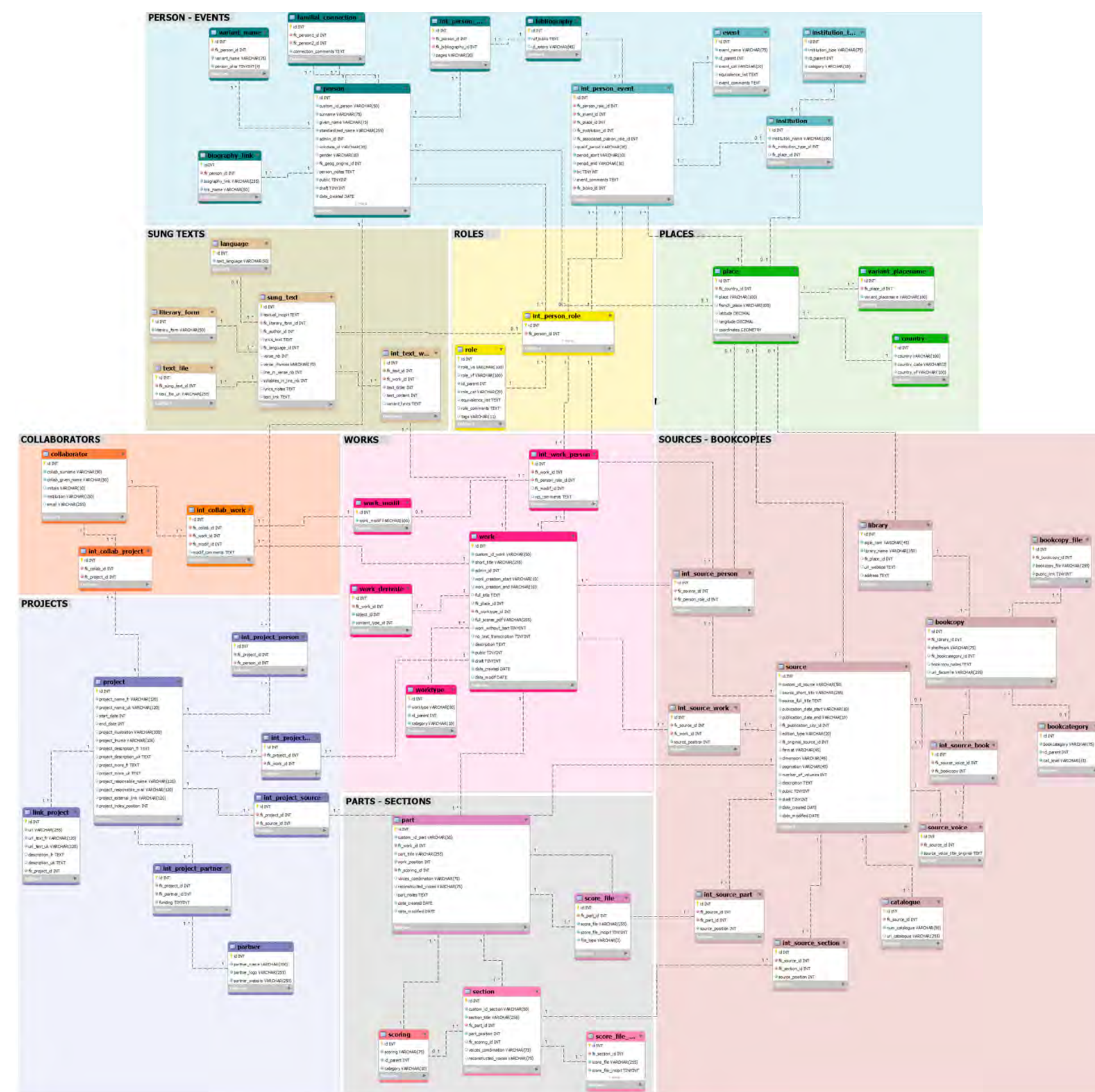
Sarra Ferjani & Suzy Piat - CESR

THE RICERCAR LAB aims to study and promote all musical expressions of the early modern period, with three main objectives:

- **to enrich our knowledge of Renaissance music in all its aspects:** repertoires, compositional processes, performance practices, global studies, theory, iconography and organology
- **to construct databases and online repertoires**
- **to promote musical heritage**

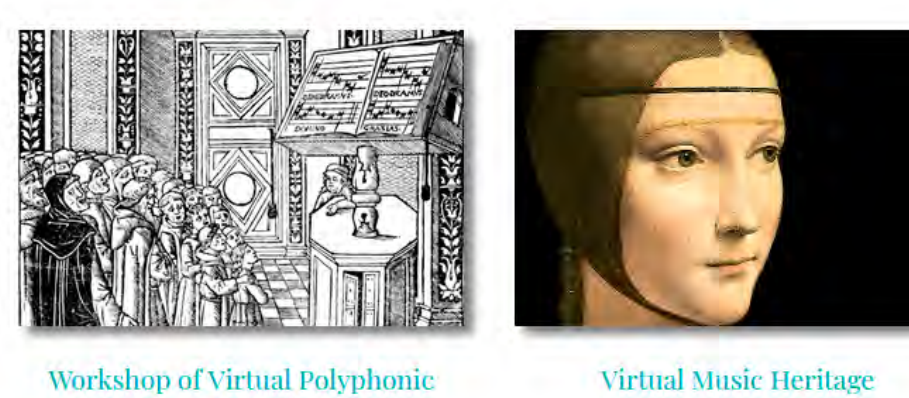
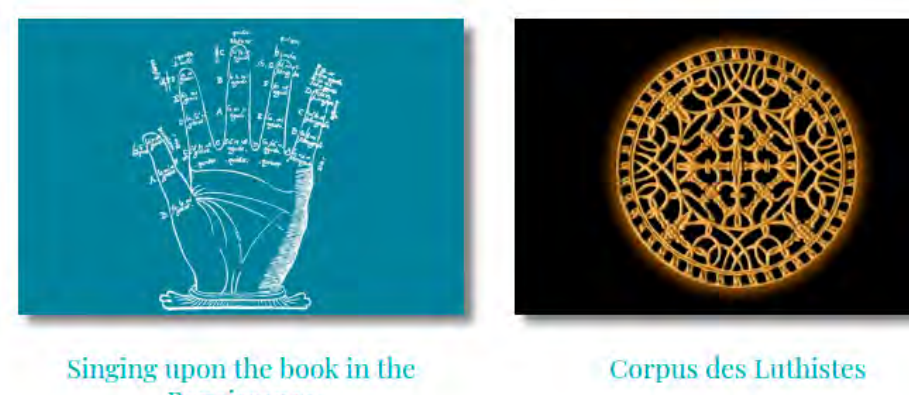
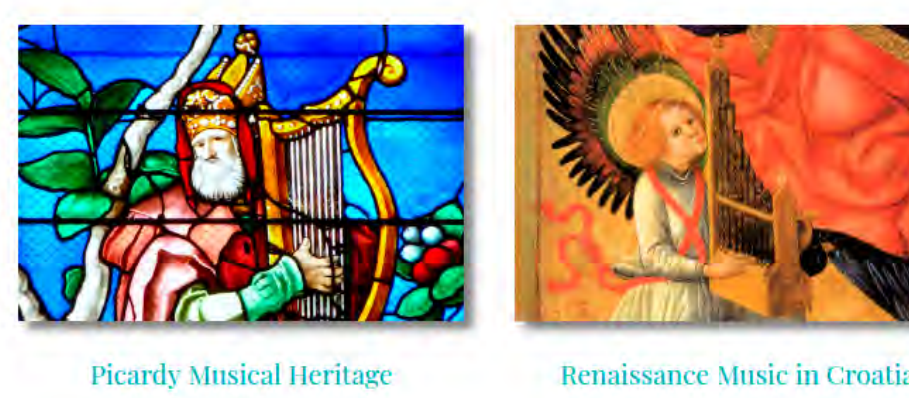
A database thought for musical data

The database focuses on three main entities: musical works, sources and people. The musical works are organised in a complex way in order to manage aggregations, adaptations and derivatives, in conjunction with a prosopographical section which aims to provide an overview of Renaissance musical society.

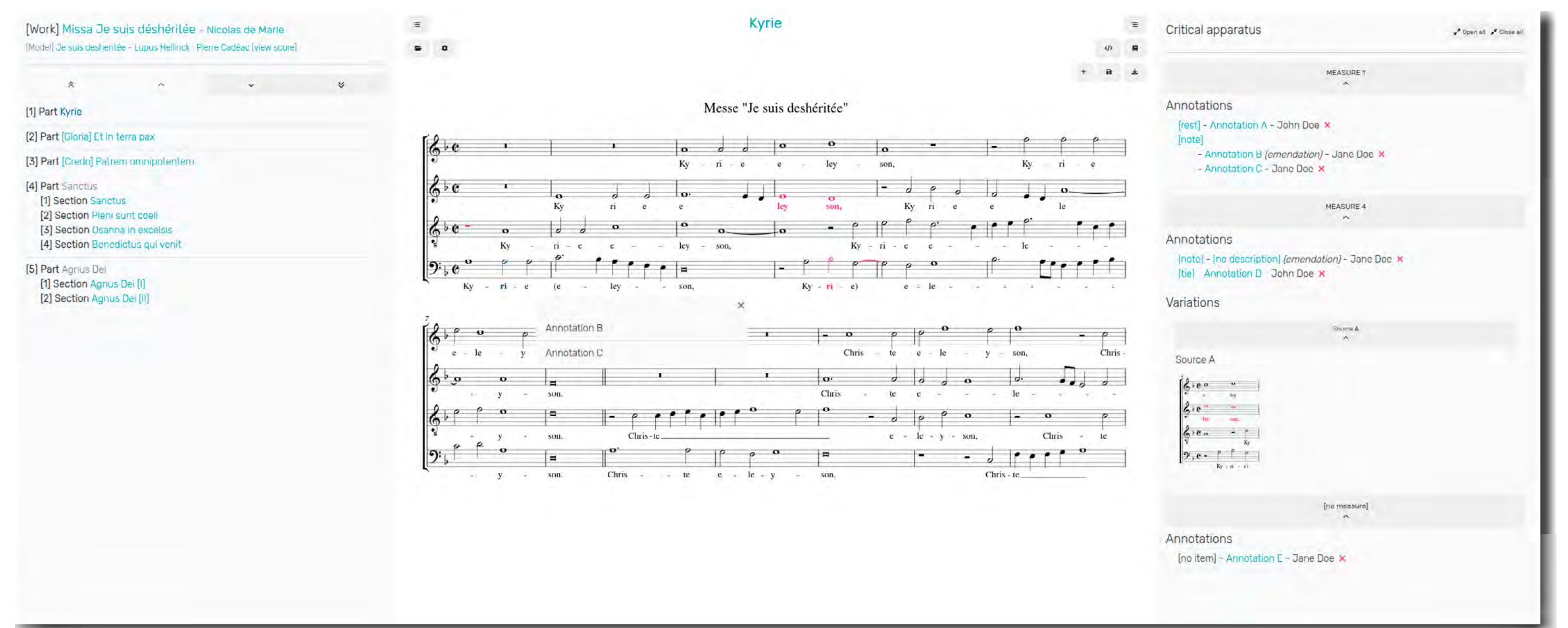
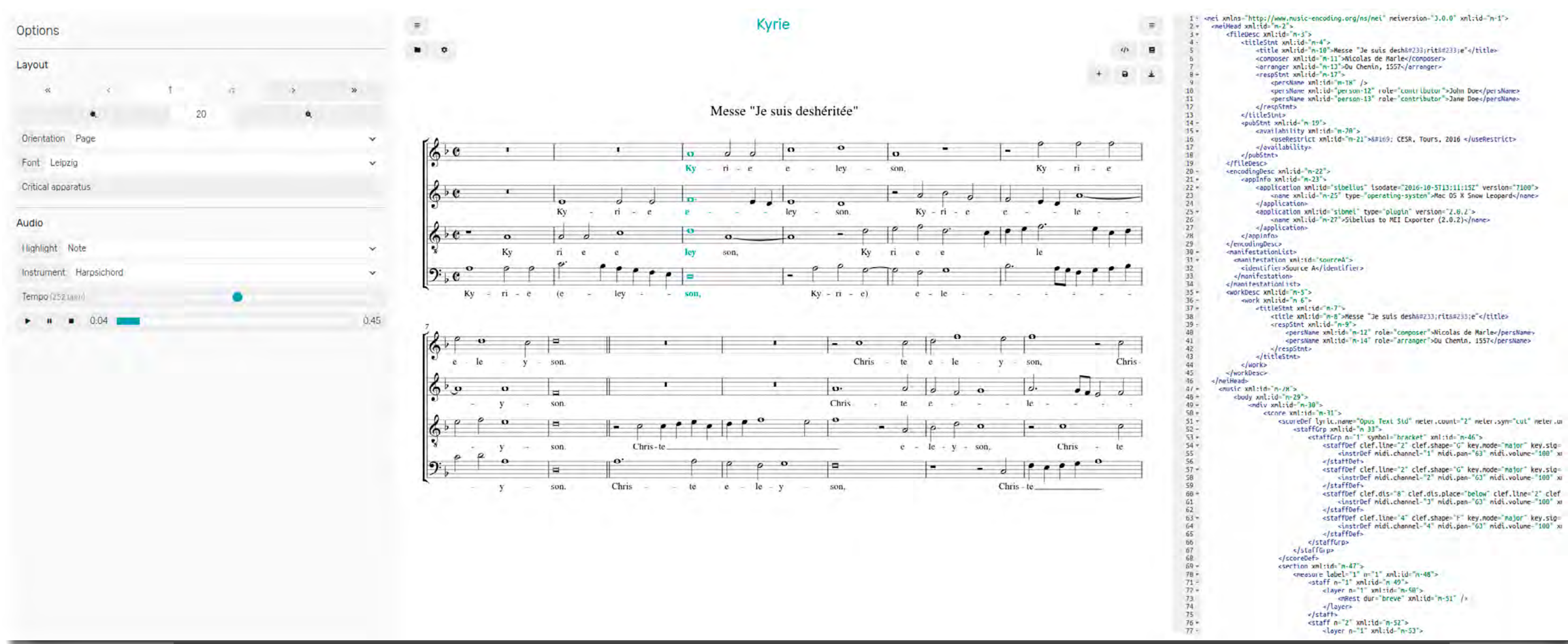


Browse data

Users can browse projects, works, sources and people and perform multi-criteria search queries. The data is enriched with links to external resources, such as digitisations of the sources, and aligned with authority files. The available scores can be downloaded in different file formats.



View, play and explore scores



Each score can be seen and played according to several options relating to score display (orientation, zoom, etc.) or audio (instrument, tempo, etc.). A side section allows users to view either the MEI code or the critical apparatus encoded in the MEI file. Users can suggest annotations.

