



HAL
open science

Prognostic impact of RUNX1 mutations and deletions in pediatric acute myeloid leukemia: results from the French ELAM02 study group

Lucille Lew-Derivry, Alice Marceau-Renaut, Laurène Fenwarth, Wendy Cuccuini, Paola Ballerini, Maxime Ferreboeuf, Audrey Guilmatre, Arnaud Petit, Virginie Gandemer, Fanny Rialland, et al.

► To cite this version:

Lucille Lew-Derivry, Alice Marceau-Renaut, Laurène Fenwarth, Wendy Cuccuini, Paola Ballerini, et al.. Prognostic impact of RUNX1 mutations and deletions in pediatric acute myeloid leukemia: results from the French ELAM02 study group. *Leukemia*, 2023, 37 (8), pp.1723-1726. 10.1038/s41375-023-01931-y . hal-04283874

HAL Id: hal-04283874

<https://hal.science/hal-04283874>

Submitted on 14 Nov 2023

HAL is a multi-disciplinary open access archive for the deposit and dissemination of scientific research documents, whether they are published or not. The documents may come from teaching and research institutions in France or abroad, or from public or private research centers.

L'archive ouverte pluridisciplinaire **HAL**, est destinée au dépôt et à la diffusion de documents scientifiques de niveau recherche, publiés ou non, émanant des établissements d'enseignement et de recherche français ou étrangers, des laboratoires publics ou privés.



Distributed under a Creative Commons Attribution 4.0 International License

LETTER OPEN



Prognostic impact of *RUNX1* mutations and deletions in pediatric acute myeloid leukemia: results from the French ELAM02 study group

Lucille Lew-Derivry¹✉, Alice Marceau-Renaut², Laurène Fenwarth^{1,2,3}, Wendy Cuccuini⁴, Paola Ballerini⁵, Maxime Ferreboeuf¹, Audrey Guilmatre¹, Arnaud Petit^{1,6}, Virginie Gandemer⁷, Fanny Rialland^{1,8}, Pascale Schneider⁹, Gérard Michel¹⁰, Yves Bertrand¹¹, Andre Baruchel^{1,12}, Claude Preudhomme^{2,3}, Guy Leverger^{1,6} and Hélène Lapillonne^{5,6}

© The Author(s) 2023

Leukemia (2023) 37:1723–1726; <https://doi.org/10.1038/s41375-023-01931-y>

TO THE EDITOR:

Acute myeloid leukemia (AML) accounts for about 20% of acute leukemias in children and still has a poor prognosis compared to lymphoblastic leukemia (5-year survival rate about 68%) [1]. Over the years, knowledge of oncogenetic abnormalities has improved, allowing AML to be classified into groups with different prognosis, leading to different treatment intensity [2]. However, most genetic alterations have been described in adult cohorts. Bolouri et al. [3] and Marceau-Renaut et al. [4] have shown that the molecular landscape in children differs from that of adult AMLs and further studies are needed for a comprehensive classification of pediatric AML.

RUNX1, runt related transcription factor 1, is a transcription factor expressed in hematopoietic cells, plays a role in the early differentiation of progenitor and stem cells, and is known to be involved in hematologic diseases and leukemogenesis as a site of mutations [5].

In adult AML cohorts, *RUNX1* mutations are identified in 5–8% of younger patients, associated with M0 FAB subtype, normal karyotype and correlate with poor clinical outcome [6–8]. As an unfavorable marker, adult patients with *RUNX1* mutation are stratified in high risk group of treatment [9]. In contrast to *RUNX1* mutations, *RUNX1* deletions have rarely been studied and their impact is therefore unknown. In children, the impact of *RUNX1* mutations or deletions remains unclear because of their low frequency and is not used for risk stratification and choice of treatment intensity.

438 children with de novo AML were treated in the ELAM02 trial and *RUNX1* gene status was screened in 386 of them. *RUNX1* abnormality was found in 8% (29 of 386) of the cases, 24 patients with mutation and 5 with deletion. Because the majority of *RUNX1* mutations in AML behave as loss-of-function mutations,

we decided to study both *RUNX1* mutations and deletions as one group.

Main clinical, cytological and cytogenetic characteristics of children with *RUNX1* mutated and deleted (*RUNX1*^{m/del}) compared with *RUNX1* wild type (*RUNX1*^{wt}) are reported in Table 1.

There were no differences between *RUNX1*^{m/del} and *RUNX1*^{wt} regarding sex, age, white blood cell count, or central nervous system involvement.

RUNX1^{m/del} AMLs were more likely to be AML-FAB M0 (5/29 (17%) vs 19/357 (5%), *p* value = 0.03), and exclusive with AML-FAB M5. *RUNX1* mutations were associated with a normal karyotype (10/24 (42%) vs 90/357 (25%), *p* = 0.09) as previously described in adult studies [6, 8], exclusive with *KMT2A* (11q23) rearrangement, and rarely associated with Core Binding Factor (CBF) abnormalities as t(8;21)(q22;q22). Therefore, 69% of *RUNX1*^{m/del} patients were classified in the intermediate risk group. The distribution between risk groups was similar between *RUNX1*^{m/del} and *RUNX1*^{wt} patients leading to a comparable treatment intensity.

We identified 30 *RUNX1* mutations in 24 patients (6 of them cumulating 2 mutations), 16 of them in the RUNT Homology domain, and 8 mutations had been previously described in the literature by Brown et al. [10]. We found no association between the level of variant allele frequency (VAF), type (frameshift, missense, nonsense), and location of the mutation with leukemia prognosis. In addition to mutated patients, 5 patients had *RUNX1* deletion (between 50 kb and 1,6 Mb; all involving the RUNT domain).

Based on the 2015 American College of Medical Genetics and Genomics and Association for Molecular Pathology guidelines [11], all *RUNX1* alterations are classified as pathogenic or likely pathogenic except for 2; the first is known to be a benign variant of *RUNX1* gene and the second is of unknown significance. These

¹AP-HP, Pediatric Hematology and Oncology Department, Trousseau Hospital, F-75012 Paris, France. ²CHU Lille, Laboratory of Hematology, F-59000 Lille, France. ³INSERM, UMR-S 1172, F-59000 Lille, France. ⁴AP-HP, Department of cytogenetics, Saint-Louis Hospital, F-75010 Paris, France. ⁵AP-HP, Laboratory of Hematology, Trousseau hospital, F-75012 Paris, France. ⁶Sorbonne Université, INSERM, UMRS_938, Centre de Recherche Saint-Antoine-CRSA, F-75012 Paris, France. ⁷Department of Pediatric Hematology/Oncology, University Hospital of Rennes, F-35000 Rennes, France. ⁸Department of Pediatric Hematology/Oncology, University Hospital of Nantes, F-44000 Nantes, France. ⁹Department of Pediatric Hematology/Oncology, University Hospital Charles-Nicolle, F-76000 Rouen, France. ¹⁰AP-HM, Department of Pediatric Hematology, La Timone University Hospital, F-13000 Marseille, France. ¹¹Hospices civils de Lyon, Institute of Hematology and Oncology Pediatrics, F-69000 Lyon, France. ¹²AP-HP, Department of Pediatric Hematology and Immunology, Robert Debre University Hospital, F-75019 Paris, France. ✉email: l.derivry@gmail.com

Received: 23 September 2022 Revised: 17 April 2023 Accepted: 18 May 2023
Published online: 16 June 2023

Table 1. Clinical, cytological, cytogenetic characteristics and outcome of *RUNX1*^{m/del} and *RUNX1*^{wt} children.

	<i>RUNX1</i> ^{m/del} n = 29 (8%)	<i>RUNX1</i> ^{wt} n = 357 (92%)	P value
<i>Clinical data, n (%)</i>			
Male gender	14 (48%)	196 (55%)	0.56
<i>Age at diagnosis</i>			
≤2 years old	2 (7%)	79 (22%)	0.06
Median age [min-max]	11.2 [0.7–17.2]	8.4 [0–18.6]	0.07
CNS involvement	3 (10%)	57 (16%)	0.60
<i>White blood cells count at diagnosis</i>			
>100 G/L	4 (14%)	57 (16%)	0.62
Median count	10.8 [1.7–445]	17.7 (0.4–575)	0.20
<i>Risk group</i>			
Standard	2 (7%)	90 (25%)	
Intermediate	20 (69%)	181 (51%)	ns
Adverse	6 (21%)	84 (24%)	
<i>Cytogenetics, n (%)</i>			
Normal	10 (34%)	90 (25%)	0.28
CBF	2 (7%)	90 (25%)	0.02
MLL	0	78 (22%)	0.002
–7/del7q	5 (17%)	28 (8%)	0.09
Complex karyotype	6 (21%)	39 (11%)	0.13
Missing	1 (4%)	2 (1%)	0.21
<i>FAB classification, n (%)</i>			
M0	5 (17%)	19 (5%)	0.03
M1	8 (28%)	54 (15%)	0.11
M2	8 (28%)	82 (23%)	0.65
M4	3 (10%)	76 (21%)	0.23
M5	1 (3%)	85 (24%)	0.009
M6	2 (7%)	9 (3%)	0.20
M7	1 (3%)	18 (5%)	1
Unclassified + basophil	1 (3%)	9 (3%)	0.55
Chloroma	0	5 (1%)	1
<i>Outcome, n (%)</i>			
Complete remission	24 (83%)	327 (92%)	0.17
Relapse	11 (38%)	122 (34%)	0.69
HSCT	9 (31%)	99 (28%)	0.67
Death	17 (59%)	86 (24%)	<0.001
<i>Survival, [CI 95%]</i>			
5-years OS	33.6% [18.6–60.8]	75.7% [71.3–80.4]	<0.001
5-years EFS	32.5% [16.8–62.8]	61.4% [56.2–67.2]	0.003

Data presented as number (%), unless otherwise indicated.

CNS central nervous system, FAB French-American-British classification.

CBF Core binding factor define by inv(16) or t(8;21).

HSCT hematopoietic stem cell transplantation.

OS Overall survival, EFS Event-free survival.

2 patients are cured and were treated in the favorable group because of CBF alteration.

RUNX1 mutated patients had a higher number of co-mutations compared with the rest of the cohort (2.71 on average vs 1.43, $p < 0.001$), as described by Brown et al. [10]. The most common class of co-mutated genes involved control kinase signaling (50%) especially *FLT3-ITD*, *NRAS*, *FLT3-TKD* and *KRAS* or *WT1*. *RUNX1* alterations were also associated with *EZH2* and *BCOR* mutations, as reported by Gaidzik [8] in adults.

We found no *CEBPA*, *NPM1*, *TET2*, *SETBP1*, *RAD21*, *CBL* mutations in *RUNX1* mutated patients. Except for 1 patient with *RUNX1* deletion who had a co-mutation in *U2AF1*, *RUNX1* mutated patients had no alteration in splicing factor (SF) (such as *SRSF2* or *SF3B1*). In contrast to what was recently reviewed by Inge van der Werf et al. [12] in adult AML, the prognostic value of *RUNX1* mutations in our cohort was not limited to their co-occurrence with SF mutations.

We observed a significantly worse outcome for *RUNX1*^{m/del} patients compared with *RUNX1*^{wt} (5-year EFS = 32.5% [95%

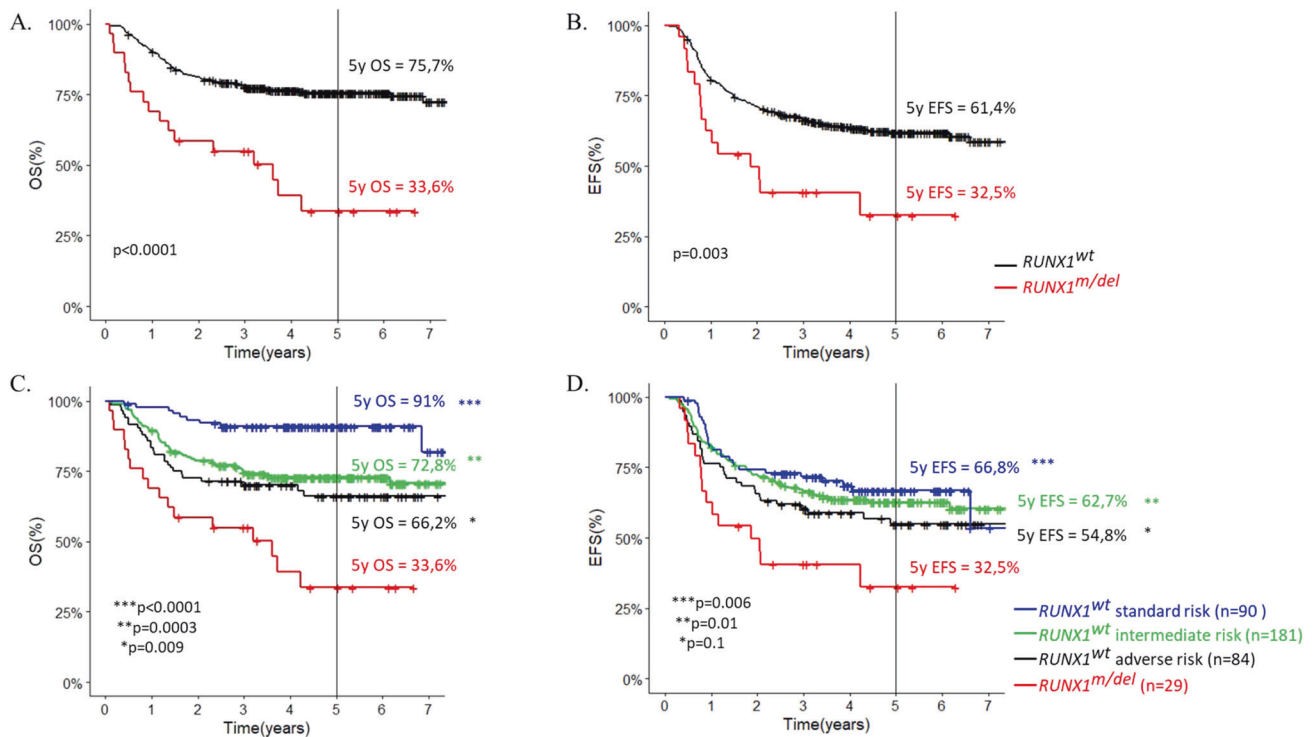


Fig. 1 Childhood AML outcome according RUNX1 status. A Overall survival according RUNX1 status - **B** Event-free survival according RUNX1 status - **C** Overall survival according to risk group and RUNX1^{m/del} - **D** EFS according to risk group and RUNX1^{m/del}. *Significant difference between RUNX1^{m/del} and RUNX1^{wt} risk subgroup.

confidence interval = 16.8–62.8] vs 61.4% [CI = 56.2–67.2]; and 5-yOS = 33.6% [CI = 18.6–60.8] vs 75.7% [CI = 71.3–80.4]). Hazard ratios for EFS and OS were 2.2 (CI = 1–4.7; *p* value = 0.003) and 3.3 (CI = 1.4–7.5; *p* < 0.0001), respectively. Comparing by risk groups, RUNX1^{m/del} patients still had a worse outcome than patients in adverse risk group (5-y OS = 33.6% for RUNX1^{m/del} vs 66.2% for RUNX1^{wt} in adverse risk group). (Fig. 1).

However, RUNX1^{m/del} patients achieved complete remission (CR) as RUNX1^{wt} patients (83% vs 92%, *p* = 0.17) and had the same relapse rate (11/29 (38%) vs 122/357 (34%), *p* = 0.69).

Causes of death included leukemia (7/17), infection (4/17), or post-transplant toxicity (4/17). To elucidate the reason for this high toxicity and to understand how the RUNX1 alteration leads to such a poor outcome, further studies need to be performed on a larger cohort.

Three arguments led us to question whether some of these children with mutated RUNX1 might have a constitutional mutation: (1) the high toxic death rate, which could be explained by abnormal hematopoiesis exacerbating treatment toxicities(2), the high number of patients (16/24, 67%) with an increased VAF (>30%), suggesting a possible germline origin, and (3) the presence of two different RUNX1 mutations in 6 patients, one of which may be of germline origin and a second of somatic origin [13].

In our study, among these 16 patients with VAF > 30%, only 1/12 of the patients tested was confirmed to have a RUNX1 germline mutation; this patient had only one RUNX1 mutation, is still alive, and showed no treatment-related toxicity.

Among the 5 deletions, only one patient had a large germline RUNX1 deletion (1.6 Mb), already described by Preudhomme et al. [14].

Although further studies are needed to determine whether these constitutional mutations require specific treatment, the systematic search for germline mutations in complete remission may be of interest to adjust therapeutic agents.

In conclusion, our study demonstrates the prevalence, co-mutation profile, and poor survival of RUNX1-mutated or -deleted AML in a well-described pediatric cohort. The *EZH2* and *BCOR* genes, known as chromatin modifiers, are frequent co-mutations in RUNX1^{m/del} leukemia and may play a role in the unfavorable future of this leukemia. Considering other pediatric studies [3, 15], RUNX- mutated and -deleted AML in children should be classified into a poor risk group to benefit from optimal intensified treatment, taking into account the high mortality due to toxicity.

DATA AVAILABILITY

The datasets analyzed during the current study are available from the corresponding author on reasonable request.

REFERENCES

- Siegel RL, Miller KD, Fuchs HE, Jemal A. Cancer Statistics, 2021. *CA Cancer J Clin.* 2021;71:7–33.
- Rubnitz JE. Current Management of Childhood Acute Myeloid Leukemia. *Paediatr Drugs.* 2017;19:1–10.
- Bolouri H, Farrar JE, Triche T, Ries RE, Lim EL, Alonzo TA, et al. The molecular landscape of pediatric acute myeloid leukemia reveals recurrent structural alterations and age-specific mutational interactions. *Nat Med.* 2018;24:103–12.
- Marceau-Renaut A, Duployez N, Ducourneau B, Labopin M, Petit A, Rousseau A, et al. Molecular Profiling Defines Distinct Prognostic Subgroups in Childhood AML: A Report From the French ELAM02 Study Group. *HemaSphere.* 2018;2:e31.
- Sood R, Kamikubo Y, Liu P. Role of RUNX1 in hematological malignancies. *Blood.* 2017;129:2070–82.
- Khan M, Cortes J, Kadia T, Naqvi K, Brandt M, Pierce S, et al. Clinical Outcomes and Co-Occurring Mutations in Patients with RUNX1-Mutated Acute Myeloid Leukemia. *Int J Mol Sci.* 2017;18:1618.
- Jalili M, Yaghmaie M, Ahmadvand M, Alimoghaddam K, Mousavi SA, Vaezi M, et al. Prognostic Value of RUNX1 Mutations in AML: A Meta-Analysis. *Asian Pac J Cancer Prev APJCP.* 2018;19:325–9.

8. Gaidzik VI, Teleanu V, Papaemmanuil E, Weber D, Paschka P, Hahn J, et al. RUNX1 mutations in acute myeloid leukemia are associated with distinct clinico-pathologic and genetic features. *Leukemia*. 2016;30:2160–8.
9. Döhner H, Estey E, Grimwade D, Amadori S, Appelbaum FR, Büchner T, et al. Diagnosis and management of AML in adults: 2017 ELN recommendations from an international expert panel. *Blood*. 2017;129:424–47.
10. Brown AL, Arts P, Carmichael CL, Babic M, Dobbins J, Chong CE, et al. RUNX1-mutated families show phenotype heterogeneity and a somatic mutation profile unique to germline predisposed AML. *Blood Adv*. 2020;4:1131–44.
11. Luo X, Feurstein S, Mohan S, Porter CC, Jackson SA, Keel S, et al. ClinGen Myeloid Malignancy Variant Curation Expert Panel recommendations for germline RUNX1 variants. *Blood Adv*. 2019;3:2962–79.
12. van der Werf I, Wojtuszkiewicz A, Meggendorfer M, Hutter S, Baer C, Heymans M, et al. Splicing factor gene mutations in acute myeloid leukemia offer additive value if incorporated in current risk classification. *Blood Adv*. 2021;5:3254–65.
13. Brown AL, Hahn CN, Scott HS. Secondary leukemia in patients with germline transcription factor mutations (RUNX1, GATA2, CEBPA). *Blood*. 2020;136:24–35.
14. Preudhomme C, Renneville A, Bourdon V, Philippe N, Roche-Lestienne C, Boissel N, et al. High frequency of RUNX1 biallelic alteration in acute myeloid leukemia secondary to familial platelet disorder. *Blood*. 2009;113:5583–7.
15. Yamato G, Shiba N, Yoshida K, Hara Y, Shiraishi Y, Ohki K, et al. RUNX1 mutations in pediatric acute myeloid leukemia are associated with distinct genetic features and an inferior prognosis. *Blood*. 2018;131:2266–70.

ACKNOWLEDGEMENTS

The authors are grateful to Christophe Roumier and Olivier Nibourel (Tumor Bank, CHU Lille) and technical support of Trousseau Laboratory (National ELAM02 biobanking) for handling, conditioning, and storing patient samples. The work of all clinical research assistants is also acknowledged here. Thank you to Alain Degenne for his work on statistical analysis. The authors would like to thank all the patients, their families, the investigators, and staff of all the centers of Société Française de lutte contre les Cancers et leucémies de l'Enfant et de l'Adolescent (SFCE) for their implication in the trial.

AUTHOR CONTRIBUTIONS

GL was the principal investigator of ELAM02 study. LLD, HL, and GL performed the research. LLD and HL wrote the paper. AMR, LF, WC, PB, CP, and HL performed genetic analysis. LLD and MF performed statistical analysis. AG ensured the database management. AP, VG, FR, PS, GM, YB, AB, and GL enrolled patients in the study.

FUNDING

This work was supported by the French National Cancer Institute (INCA-DGOS_5797) and by a grant from the French Ministry of Health (PHRC-K 2003 no 03142). The Trousseau laboratory received funding from the Association Laurette Fugain (ALF2015/12) and La Fondation de France (RFDF9) to support molecular study and the ELAM02 national tumor Bank.

COMPETING INTERESTS

The authors declare no competing interests.

ADDITIONAL INFORMATION

Supplementary information The online version contains supplementary material available at <https://doi.org/10.1038/s41375-023-01931-y>.

Correspondence and requests for materials should be addressed to Lucille Lew-Derivy.

Reprints and permission information is available at <http://www.nature.com/reprints>

Publisher's note Springer Nature remains neutral with regard to jurisdictional claims in published maps and institutional affiliations.



Open Access This article is licensed under a Creative Commons Attribution 4.0 International License, which permits use, sharing, adaptation, distribution and reproduction in any medium or format, as long as you give appropriate credit to the original author(s) and the source, provide a link to the Creative Commons license, and indicate if changes were made. The images or other third party material in this article are included in the article's Creative Commons license, unless indicated otherwise in a credit line to the material. If material is not included in the article's Creative Commons license and your intended use is not permitted by statutory regulation or exceeds the permitted use, you will need to obtain permission directly from the copyright holder. To view a copy of this license, visit <http://creativecommons.org/licenses/by/4.0/>.

© The Author(s) 2023