



**HAL**  
open science

## Morphology-based classification of the flying capacities of aquatic insects: A first attempt

Rémi Gerber, Christophe Piscart, Jean-Marc Roussel, Benjamin Bergerot

### ► To cite this version:

Rémi Gerber, Christophe Piscart, Jean-Marc Roussel, Benjamin Bergerot. Morphology-based classification of the flying capacities of aquatic insects: A first attempt. *Current zoology*, 2023, pp.zoad047. 10.1093/cz/zoad047 . hal-04283015

**HAL Id: hal-04283015**

**<https://hal.science/hal-04283015>**

Submitted on 13 Nov 2023

**HAL** is a multi-disciplinary open access archive for the deposit and dissemination of scientific research documents, whether they are published or not. The documents may come from teaching and research institutions in France or abroad, or from public or private research centers.

L'archive ouverte pluridisciplinaire **HAL**, est destinée au dépôt et à la diffusion de documents scientifiques de niveau recherche, publiés ou non, émanant des établissements d'enseignement et de recherche français ou étrangers, des laboratoires publics ou privés.



Distributed under a Creative Commons Attribution - NonCommercial 4.0 International License

# Morphology-based classification of the flying capacities of aquatic insects: A first attempt

Rémi Gerber<sup>a,b</sup>, Christophe Piscart<sup>a</sup>, Jean-Marc Roussel<sup>b</sup>, Benjamin Bergerot<sup>a</sup>

<sup>a</sup>University of Rennes, CNRS, ECOBIO - UMR 6553, F-35042 Rennes, France

<sup>b</sup>DECOD (Ecosystem Dynamics and Sustainability), INRAE, Institut Agro, IFREMER, France

\*Address correspondence to Benjamin Bergerot. E-mail: [benjamin.bergerot@univ-rennes.fr](mailto:benjamin.bergerot@univ-rennes.fr), [Orcid: 0000-0003-4313-4925](https://orcid.org/0000-0003-4313-4925)

Handling editor: Zhi-Yun Jia

© The Author(s) 2023. Published by Oxford University Press on behalf of Editorial Office, Current Zoology.

This is an Open Access article distributed under the terms of the Creative Commons Attribution-NonCommercial License (<https://creativecommons.org/licenses/by-nc/4.0/>), which permits non-commercial re-use, distribution, and reproduction in any medium, provided the original work is properly cited. For commercial re-use, please contact [journals.permissions@oup.com](mailto:journals.permissions@oup.com)

## Abstract

Flight is a key feature of the reproduction and dispersal of emerging aquatic insects. However, morphological measurements of insect flight are mostly available for terrestrial taxa and dragonflies, while aquatic insects have been poorly investigated. We analyzed seven flight-related morphological parameters of 32 taxa belonging to five orders of emerging aquatic insects (Ephemeroptera, Trichoptera, Plecoptera, Diptera, and Megaloptera) with different life history traits related to flight (dispersal strategy, voltinism, adult lifespan, and swarming behavior). After correcting for allometry, we used an *a priori*-free approach to cluster the individuals according to their flight-related morphology. Then, we explored the levels of agreement between these clusters, taxonomy, and several life history traits of the taxa. All orders were scattered among several clusters, suggesting a large range of flight capacities, particularly for Diptera. We found swarming taxa in each cluster, showing that morphological adaptations to swarming are not identical in all aquatic insects. The clusters did not match the expected dispersal capacity of the taxa as derived from the literature or databases. Heavy wide-winged insects notably gathered taxa traditionally described as good or weak dispersers. Flight capacities based on morphology partly matched with the taxonomy and life-history traits of aquatic insect imagoes. Other parameters such as flight propensity, energy stores, and wing kinematics should help refine their flying and dispersal capacity.

**Key words:** allometry, dispersal, flight, freshwater, wing

Accepted Manuscript

Aquatic insects are found in all freshwater ecosystems (rivers, streams, lakes, temporary ponds, etc.). They represent more than 100,000 species all over the world and belong to twelve orders (Dijkstra et al. 2014). Among orders, Ephemeroptera (mayfly), Plecoptera (stonefly), Trichoptera (caddisfly) – often referred to as EPT –, Odonata and Megaloptera are almost entirely aquatic, whereas only a small number of Hymenoptera, Lepidoptera and Neuroptera have an aquatic life stage (Dijkstra et al. 2014). Diptera make up the most diverse order, including nearly 46,000 species belonging to 41 families (Adler & Courtney 2019) and truly aquatic Diptera (Chironomidae) represent more than 4,000 known species (Ferrington 2007). Aquatic insects spend at least one stage of their life cycle in the water, and most species exhibit aquatic larvae that emerge from the water as winged adults. Literature about the larvae of aquatic insects is abundant because they are used as bioindicators (Montes et al. 2012; Cortelezzi et al. 2020), whereas literature about the adult stage is scarce. Almost all imagoes (*i.e.*, the last stage of the life cycle of insects – the adult stage) of aquatic species have wings and can fly (Nilsson 1996). Intensive research has been carried out about how insects fly (Ellington 1999; Dudley 2002; Harbig 2017). Flight relies on a number of different capacities: flight speed, manoeuvrability (the space needed to change the flight path while flying at a fixed speed), and endurance and agility (the speed at which an individual can change its flight trajectory). However, apart from Odonata, the distances that aquatic insects are able to fly are poorly known. Studies have often concluded that Plecoptera and Ephemeroptera stay close to the water and are “weak” flyers, while Trichoptera fly farther (Muehlbauer et al. 2014) and are considered as “good” flyers. The ‘weak/good flyer’ dichotomy simplifies the complexity of insect flight and is not necessarily based on the real flight capacities of the insects.

Flight is particularly crucial for aquatic insects during two phases of their life cycle (Dudley 2002), namely mating and dispersal (Peckarsky et al. 2002; Nowinszky et al. 2014; Ptatscheck et al. 2020). Mating is highly dependent on the flight capacity. For example, male chironomids, most mayflies and some caddisfly species fly in large groups to attract females (*i.e.*, they swarm (Sullivan 1981)). In this study, we assumed that swarming required the following flight capacities: endurance, agility, and maneuverability. Dispersal is defined as the movement of individuals from one population to another, leading to successful reproduction in the new population and potential gene flow (Raffard et al. 2021). Aerial dispersal requires the capacity to fly long distances (*i.e.*, endurance). Adult insects also tend to fly upstream to compensate for the downstream drifting of the larvae (*i.e.*, longitudinal dispersal, also known as the freshwater insect colonization cycle (Müller 1982)). Although this trend does not seem to apply to all contexts (May, 2019), studies on longitudinal dispersal have provided insights into the flight behavior of aquatic insects (Didham et al. 2012). More recent studies have focused on their lateral dispersal (*i.e.*, dispersal away from a watercourse, as opposed to longitudinal dispersal). Lateral dispersal provides a better estimate of the distance that aquatic insects can fly from their water source than longitudinal dispersal does (Muehlbauer et al. 2014; Peredo Arce et al. 2021; Raitif et al. 2022; Gerber et al. 2023). Other characteristics, such as flight propensity – take-off capacity and its frequency (Asplen 2018) – are linked to the dispersal capacity. Insects that often take off are more likely to disperse, regardless of their flight capacities (Steyn et al. 2016).

Among the morphological characteristics studied in relation to dispersal, size is closely linked to the flight capabilities because aerodynamic forces change with scale. For example, aerodynamic constraints result in the vast majority of insects having to flap their wings to maintain flight; only the larger insects such as butterflies and dragonflies can glide briefly (Bhat et al. 2019). Moreover, wingbeat frequency is known to be closely related to size (Tercel et al. 2018). Dispersal strategies could also be indirectly affected by body size. Larger species can fly faster than the wind speed (Compton 2002) and thus “choose” their flight direction. These species – mainly EPT in our study – can be considered as active dispersers. Conversely, light species (*e.g.*, Chironomidae) are more easily blown away by wind (Peredo Arce et al. 2021) and are most often considered as passive dispersers. In other words, climatic conditions may facilitate take-off depending on the species (Reynolds 2013).

Size is an interesting characteristic in the study of dispersal, along with other morphological characteristics showed to be key components for understanding insect aerodynamics and flight mechanisms (Ellington 1984; Wootton 1992; Bhat et al. 2019). In this context, we aimed to (1) check for allometric relationships between morphological flight parameters and insect body length, (2) test whether morphological flight parameters were related to taxonomy, and (3) analyze the relationships between life-history traits (dispersal affinity, potential number of generations *per* year, adult lifespan and swarming behavior) and morphological flight parameters. More precisely, in 32 different taxa belonging to five orders of emerging aquatic insect (Ephemeroptera, Trichoptera, Plecoptera, Diptera, and Megaloptera), and encompassing a wide range of body sizes (from small Chironomidae to large Plecoptera), we selected five raw parameters (*i.e.*, dry body mass, body length, thorax width, forewing length and total wing area) and two wing shape parameters based on raw parameter measurements (*i.e.*, the radius of the second moment of wing area and the aspect ratio). Increased wing area leads to increased flapping wing force (Dudley 2002) and thorax width (which is related to the amount of flight muscles and therefore flight endurance (Marden 2000; Turlure et al. 2016; Crawford & Keyghobadi 2018)). The radius of the second moment of wing area (Ellington, 1984) is related to the energy efficiency of flight, and the aspect ratio is related to the ratio between lift and drag (Bhat et al. 2019). The aspect ratio has been widely studied. Empirical studies on insect dispersal suggest that a low aspect ratio correlates with the dispersal capacity (Hassall 2015). This is consistent with recent results on insect aerodynamics indicating that the wing aerodynamic performance decreases as the wing aspect ratio increases (Harbig 2017).

## Materials and Methods

### Collection and identification of aquatic insects

Imagoes of aquatic insects (EPT, Megaloptera, and Diptera) were collected and sampled in Brittany and Normandy (France) from 2018 to 2021, using aquatic emergence traps (Cadmus et al. 2016), malaise traps, and mowing nets. Most of the samples were collected nearby streams or water points, but some Ephemeroptera

and Trichoptera were caught far from water sources (> 500 m). We also set up a citizen science program to enlarge the insect collection. Eight organizations were involved and collected around 25% of the individuals. The samples came from 32 different locations (Figure 1). They were stored in a freezer or in 96% ethanol.

We aimed to collect 30 individuals *per taxon* (15 individuals *per sex* and *per taxon* whenever possible), but this number eventually ranged from 18 to 35 because of the sporadic emergence of some species. Male *Dinocras cephalotes* (Plecoptera: Perlidae), were not considered because they cannot fly (they are brachypterous).

EPT and Megaloptera were identified to the genus or species level, and Diptera to the family level (Supplementary Material S1), except Chironomidae that were identified to the genus or species level.

### Morphological measurements

After checking insect integrity, we took pictures of the dorsal and lateral views of each specimen. One forewing and one hindwing were carefully removed and flattened between a microscope slide and a cover slip. One picture of each wing was taken using a stereomicroscope (Leica M205 C) equipped with a binocular camera (Leica DMC4500). It was not possible to remove the very small hindwings (less than 8% of the total wing surface area) of *Baetis rodhani* (Ephemeroptera: Baetidae) and *Habrophlebia* spp. (Ephemeroptera: Leptophlebiidae) without damaging them. Consequently, only their forewings were analyzed. Afterward, the insects were freeze-dried for 24 h and weighed to the nearest 0.0001 mg (XP2U Mettler Toledo ultra-microbalance; Sartorius M2P microbalance).

Five raw parameters were measured for each insect: (1) dry body mass (to investigate its relationships with body length), (2) body length from the antenna base to the genitalia, (3) thorax width between the forewings, (4) forewing length from the base to the tip of the wing (Ellington, 1984), and (5) total wing area. Based on these parameters, two wing shape parameters were calculated. Firstly, the radius of the second moment (*RSM*) of wing area was computed (Ellington, 1984). The *RSM* (equation 1) describes the distribution

$$(1) RSM = \sqrt[2]{\frac{S_2}{S R^2}}$$

$$(2) S_2 = \int cr^2 dr$$

of the wing area along the wing span. At low *RSM* values, most of the wing area is close to the insect body. At high values, most of the wing area is at its tip. The *RSM* was calculated from the second moment of wing area

$S_2$  (equation 2), where  $S$  is the wing area and  $c$  the wing chord for a distance  $r$  along the wing span  $R$ . High  $RSM$  wings increase the energetic costs of flight and in turn lift force production (Lancaster et al. 2020). Secondly, the aspect ratio ( $AR$ , equation 3) of the total wing area is the ratio of the forewing length over the wing area. High-aspect ratio wings are long and thin, while low-aspect ratio wings are short and wide.

$$(3) AR = \frac{R^2}{S}$$

## Statistical analyses

*Allometry analyses:* The allometry analyses followed the procedure proposed by Warton et al. (2006). We conducted a standardized major axis (SMA) regression with the “Smatr” package and the *sma()* function (Warton et al. 2012) to determine the relationship between each morphological parameter as a response variable and body length as an explanatory variable, both log-transformed. Using the *sma()* function, we calculated the regression lines between the means of the morphological parameters and body length *per* taxon to remove intra-taxon variation. As the data were log-transformed, the slope  $b$  of the regression line was equal to the allometry coefficient (see Peig & Green (2009) for details). Length parameters (forewing length and thorax width), the aspect ratio, the  $RSM$ , and body length were proportional when  $b = 1$  (*i.e.*, they were isometric). As area  $A$  corresponded to the squared length  $L$  ( $A = L^2$ ), wing area and body length were isometric when  $b = 2$ . Dry body mass and body length were isometric when  $b = 3$  (the volume  $V$  was related to the mass  $M$ , so that  $M \approx V = L^3$  (Chown et Gaston, 2010)). If  $b > 1$  ( $b > 2$  for wing area and  $b > 3$  for dry body mass), the parameter value increased faster than body size (hyper-allometry). If  $b < 1$ , the parameter value increased more slowly than body size (hypo-allometry). Slope  $b$  was compared with the isometric value for each parameter by testing the correlation between residuals and fitted values.

*Clustering of emerging insects based on flight-related morphological parameters:* A principal component analysis (PCA) based on normalized data was carried out on all individuals using forewing length, allometry-adjusted thorax width, allometry-adjusted wing area, the aspect ratio, and the  $RSM$  (“Factominer” package, *PCA()* function; Lê, Josse & Husson 2008). Aerodynamic forces are strongly influenced by size. Therefore, we chose forewing length as a size parameter (*i.e.*, without any allometric adjustment). A Euclidean distance matrix was calculated (“vegan” package, *vegdist()* function; Oksanen et al. 2015) from the mean of the PCA coordinates *per* taxon (*i.e.*, the centroid of each taxon). Only the first three components were considered.

We allometrically adjusted the raw parameters using  $b$  obtained from the SMA regressions to allow for size-independent comparisons. The allometrically adjusted ratio was  $\bar{Y}_i = Y_i/X_i^b$  (Albrecht et al. 1993). For each individual  $i$ ,  $\bar{Y}_i$  was the allometrically adjusted ratio of any given morphological parameter used in the further analyses.  $Y_i$  was the morphological parameter and  $X_i$  was body length. As the aspect ratio and the  $RSM$  were non-dimensional numbers and forewing length was needed for the size variable, no allometric adjustment was needed for these parameters.

The morphology-based classification was based on the coordinates of each taxon on the first three axes of the PCA following the procedure described by Borcard, Gillet, and Legendre (2011). We selected the methods that best fitted our data in an *a priori*-free manner. First, the clustering model of the distance matrix was selected by comparing several hierarchical cluster analysis (HCA) methods with the Gower distance (“stats” package, *hclust()* function; R Core Team, 2021). The average method was selected to perform the HCA. Second, the number of clusters (*k*) was determined by computing the silhouette width *S* for each taxon after *k*-means consolidation. The average *S* was calculated for each cluster and partition (“cluster” package, *silhouette()* function (Maechler et al. 2021)). *S* ranged from -1 to 1: 1 indicated a perfect quality cluster and 0 a bad quality cluster (except for the clusters composed of only one taxon).

*Relationship between flight-related morphological parameters and life-history traits:* Four life-history traits drawn from the DISPERSE database (Sarremejane et al. 2020) were considered: (1) affinity for dispersal (weak affinity for dispersal, strong affinity for active dispersal, strong affinity for passive dispersal), (2) the potential number of generations *per* year (*i.e.*, voltinism; three modalities: multivoltine, univoltine, semivoltine), (3) the adult lifespan (three modalities: less than one week, one week to one month, one month to one year), and (4) the swarming behavior (two modalities: swarming or not swarming).

To test the relationships between flight-related morphological parameters, dispersal traits, and swarming, the mean coordinates of the first two principal components of each taxon were used as response variables, and the dispersal traits and swarming were used as explanatory variables. Comparisons were made using Kruskal-Wallis or ANOVA tests, depending on the normality and homoscedasticity of the data (checked using Shapiro-Wilk and Bartlett’s tests).

All statistical analyses were performed with R software v. 4.1.1 (R Core Team 2021).

## Results

We analyzed 898 individuals distributed into five orders and 32 taxa: eleven Diptera (including six Chironomidae), five Ephemeroptera, five Plecoptera, one Megaloptera, and ten Trichoptera. Sexual dimorphism was not detected. Therefore, sex was not considered in the further analyses (Supplementary Material S2).

### Allometry

Body length was highly related with raw parameters (*i.e.*, forewing length, wing area and thorax width, minimum  $R^2$  value > 0.92). Dry body mass and thorax width were proportional to body length ( $P$  values = 0.37 and 0.34, respectively). Consequently, body length was considered as a good proxy of size. The relationships



between other raw parameters and body length were not isometric. Forewing length ( $b = 1.10$ ,  $P$  value = 0.008, Figure 2A) and wing area ( $b = 2.57$ ,  $P$  value < 0.001, Figure 2B) increased with body size.

The correlations between shape parameters (aspect ratio and  $RSM$ ) and body length were low ( $R^2 = 0.31$  and  $R^2 = 0.55$ , respectively). The absolute value of the aspect ratio decreased when size increased ( $b = -0.47$ ,  $P$  value < 0.001, Figure 2D). The  $RSM$  varied little with size ( $b = -0.09$ ,  $P$  value < 0.001, Figure 2E).

We showed allometric relationships between body length and morphological parameters, except dry body mass and thorax width that were not proportional to body length, but the intensity (slope  $b$ ) and direction varied.

### Clustering of flight-related morphologies

The average silhouette width  $S$  was the highest for partitions  $k = 6$  ( $S = 0.390$ , Figure 3A). Based on the silhouette analysis, two taxa (Diptera: Psychodidae, and Ephemeroptera: Ephemeraidae) did not fit in with their specific clusters (cluster 1:  $S = 0.088$ ; cluster 5:  $S = 0.099$ , respectively).

The taxa were structured by size, adjusted wing area and thorax width, and wing shape (aspect ratio and  $RSM$ ). Size partly contributed to the three main axes (PC1, 17%; PC2, 21%; PC3, 10%). Wing shape mainly contributed to PC1 (36% and 35%, respectively), which separated clusters 3, 4 and 6 (only including Diptera with high  $RSM$  and aspect ratio values) from clusters 1, 2, and 5 – with lower  $RSM$  and aspect ratio values. Allometrically adjusted thorax width and wing area mainly contributed to PC2, by 38% and 37% respectively, which separated clusters 1 and 4 (high adjusted thorax width and adjusted wing area) from clusters 2, 3, 5 and 6 (Figure 3C). Almost all the confidence ellipses of the taxa were flattened and oriented in the same direction, along the axis of adjusted wing area and thorax width (Figure 3B, C).

Each cluster was characterized by a different set of parameters (Figure 4). Cluster 1 included small insects with relatively high allometrically adjusted wing area and thorax width. It was represented by seven taxa, belonging to three orders (Trichoptera, Plecoptera, and Diptera). Cluster 2 included light insects characterized by a relatively narrow thorax (adj\_TW). It included four Ephemeroptera taxa and two Plecoptera taxa. Cluster 3 included very small insects, with narrow wings (high  $RSM$  and aspect ratio) but a relatively small wing area. It only included Diptera (two chironomids: *Brillia bifida* and Chironomini), Dolichopodidae and Empididae. Cluster 4 included the smallest taxa, all three chironomid taxa with very high  $RSM$ , and an allometrically adjusted wing area but narrow forewing length (FL). Cluster 5 included large species (EPTM) characterized by wings larger at their base than at their tip. Cluster 6 only included Tipulidae (Diptera) – heavy insects with high  $RSM$  and aspect ratio but a very narrow thorax and a relatively low allometrically adjusted wing area.

Overall, morphological parameters differentiated the taxa along three axes: size, wing shape (aspect ratio and  $RSM$ ) and raw parameters (allometrically adjusted wing area and thorax width).

## Dispersal traits and swarming

Significant differences along PC1 (ANOVA;  $P = 0.002$ ) were detected for affinity for dispersal (Figure 5A). According to the DISPERSE database, only three taxa out of 32 (Diptera only, in clusters 1 and 3) exhibited a strong affinity for passive dispersal (Table 1). The other dipteran taxa had a weak affinity for dispersal and represented 50% of the weak dispersers. Half of the taxa exhibited a weak affinity for dispersal. Weak dispersers were distributed among all six clusters. Thirteen taxa (mainly Trichoptera and Ephemeroptera in clusters 1, 2, and 5) were known to disperse actively (strong affinity for active dispersal, Table 1).

Swarming and non-swarming taxa differed along PC1 (Figure 5B). In general, the smaller species of our dataset tended to swarm more than the larger species. All clusters included at least one taxon with swarming behavior, so that no cluster was solely composed of non-swarming taxa (Table 1). In contrast, cluster 4 only included swarming taxa.

Significant differences along PC1 and PC2 (Kruskal Wallis test;  $P$  values  $< 0.05$ ) were detected for voltinism and adult lifespan (Figure 5C-D, respectively). All the taxa belonging to cluster 5 were either semi- or univoltine, while all the taxa belonging to cluster 4 were multivoltine. A short adult lifespan mainly characterized clusters 3 and 4.

A general link was highlighted between morphological parameters, size, and life-history traits. More specifically, the clusters did not reflect the life-history traits.

## Discussion

Our analysis of the morphology of 32 taxa highlighted strong correlations between raw flight parameters and insect body length (Figure 2). When insect size decreased, the relative values of wing area and forewing length decreased too, while the relative values of thorax width increased. This pattern seems consistent for all insects, terrestrial ones included (Dudley 2002; García & Sarmiento 2012). Air viscosity is higher for small insects than for large ones (Tercel, Veronesi & Pope, 2018), so the cost of flight should be higher for small insects. However, the power required for flight is proportional to insect size, so that the relative cost of flight does not increase when size decreases (Lyu & Sun 2021). The discrepancy between the facts that (1) the cost of flight is proportional to size, and (2) physical constraints vary according to scale is consistent with the existence of allometric morphological adaptation for flight among insects of various body sizes (García & Sarmiento 2012; Shyy et al. 2016). Correlations between body length and wing shape parameters do exist, but they are considerably weaker than those of raw flight parameters. According to Bhat et al. (2019), small insects have short and wide wings (*i.e.*, a low aspect ratio) and a higher wingbeat frequency. Our results show that small aquatic insects except Tipulidae have a higher aspect ratio than large ones. The influence of the aspect ratio on wing flapping is complex and likely depends on the kinematics involved (Wootton 2020). The large number of taxa and the wide range of insect body sizes in our study could explain these apparent differences

with the literature. The difficulties in establishing relationships between size and wing shape suggest that factors other than size, *e.g.*, wing kinematics, the flight metabolic rate (Niven and Scharlemann 2005; Tercel, Veronesi, and Pope 2018) or body stores (Gerber et al. 2022) also need to be investigated to study insect flight allometry.

Based on cluster analysis, we grouped or separated the taxa into six clusters according to their flight morphology, taking the aspect ratio, RSM, thorax width and wing area into account (Figure 3). Each cluster significantly differed in size and size-dependent aerodynamical constraints (Dudley 2002). Since size was homogenous within the clusters, we can assume that morphological similarities within the six clusters induced similar flight capacities. We are aware of the limitations of this kind of analysis, because many other parameters than morphology – ranging from kinematics to behavior – influence the way insects fly (Ellington 1999). However, empirical knowledge of flight is still lacking for most aquatic insects, and the present study provides part of the answer. Although more tests on the aerodynamics of insect flight are needed, our morphology-based classification allows studying and quantifying the flight of aquatic insects for the first time, and improves knowledge on flight patterns. Our results show that taxonomy is partly related to flight-related morphology. This result makes sense because taxonomy underlies that morphology follows from evolutionary history (Medved et al. 2015). For example, the number of wing pairs (or the size of the hind wings) explains the general patterns of Diptera and EPT (Figure 2C). Two large pairs of wings relatively increase the wing area and decrease the aspect ratio (Figure 3B). Taxonomy is intermixed with the general differences observed for life history traits, swarming and dispersal. First, it goes against the commonly held belief that morphology and flight capacities are similar among families of a same taxonomic order (Tercel et al. 2018), highlighting the diversity of insect flight. Second, there is no congruence between flight-related morphology and life history traits and dispersal. For example, most of the taxa in cluster 5 are trichopterans known for their active dispersal (except *Sericostoma* sp., Table 1). Yet, they are morphologically close to female *Dinocras cephalotes* and to *Sialis* spp., which have been reported as weak dispersers and “weak” or “clumsy” flyers (Elliott and Humpesch 1983; Ketmaier et al. 2001). Imagoes of *Sialis* spp. are primarily observed standing or walking on vegetation (Elliott and Humpesch 1983). This would suggest that the low dispersal capacity of *Sialis* spp. is related to their flight propensity – not to their flight capacities. This apparent contradiction between dispersal and flight-related morphology shows how carefully dispersal should be considered. Although insects from different taxa may share similar morphological traits, they may not have the same flying capacities (Lancaster & Downes 2017). Moreover, because flight is an energy-intensive activity (Marden 2000), we expected swarming taxa to be morphologically adapted to prolonged and energy-efficient flight (Akutsu & Morse 2020). Swarming species need to fly much longer than non-swarming species to reproduce (Dudley, 2002; Lancaster & Downes, 2013). Lightness and agility in flight might also be necessary for swarming (Peckarsky et al. 2002; Fyodorova & Azovsky, 2003). However, each of our morphological clusters contained swarming taxa (Figure 5B), suggesting that swarming behavior of insects cannot solely be inferred from basic morphological traits. Swarming taxa notably have more fuel for flight (triglycerides) than non-swarming taxa (Gerber et al. 2022). Therefore, they can fly longer. Other factors influence the capacity for dispersal, such as flight capacities through wing kinematics and aerodynamics that interact with morphology (Hall et al. 2015), the navigation capacities (*i.e.*, the ability to position oneself in space; Turlure et al. 2016), physiology (amounts of energy substrates for flight such as lipids, carbohydrates or proteins), flight propensity (Steyn et al. 2016) or temperature (Mattila 2015). A broader approach combining these factors with flight-related morphology would provide a better understanding of aquatic insect dispersal.

In conclusion, using a wide range of emerging aquatic insects, the present study shows allometry between size and raw flight-related parameters. When body length increases, forewing length and wing area relatively increase too, while thorax width relatively decreases. Conversely, wing shape parameters (*i.e.*, the aspect ratio and the RSM) are not strongly correlated with body length. Based on flight-related morphological parameters, we clustered 32 taxa of aquatic insects according to their potential flight capacities. The various flight-related

morphologies observed among taxa suggest highly variable flight capacities between and within orders. Six clusters of flight-related morphologies emerged, partly correlated with taxonomy or life-history traits of the taxa. Contrary to a commonly held belief, insect morphology alone is a questionable proxy for “good” and “poor” flyer categories. A more comprehensive approach combining morphology with physiology, kinematics and behavior is now required for further understanding of the flight and dispersal of aquatic emerging insects.

Accepted Manuscript

## Acknowledgments

This research work was funded by two grants from the LTSER Zone Atelier Armorique and Earth Sciences and Astronomy Observatory (OSUR) Rennes. We particularly thank all the people involved in the citizen science program (Lionel Picard of “gRoupe ”eTude des Invertébrés Armoricains” (<http://www.gretia.org/>); Anthony le Gall of “Maison de la Rivière” (<https://www.maison-de-la-riviere.com>; Sizun); Jean-Pierre Pichard and Romain Bazire of “Réserve naturelle des étangs du Petit et du Grand Loc’h” (Guidel, <https://www.chasserenbretagne.fr/fdc56/>); Sébastien Gautier (with Matthieu and Pauline’s help) of “Office français de la biodiversité” (<https://ofb.gouv.fr/>); Aurélien Fritot of “Syndicat mixte du assin versant du Linon” (<https://bvlinon.fr/>); Annegret Nicolai of “Station biologique de Paimpont” (<https://paimpont.univ-rennes1.fr/>) as well as all those motivated but prevented by the covid19 epidemic. We also thank Joel Breil-Moubayed for the Chironomidae identification, the internships students Marie Petit and Séréna Hadfield for the help in data acquisition, and Romain Georges for fieldwork.

## Declaration of authorship

B.B., J-M.R. and C.P. *conceived the ideas and designed the methodology*; R.G. conducted fieldwork; R.G. analyzed the data; R.G., C.P. and B.B. wrote the manuscript. All authors contributed critically to the drafts and gave final approval for publication.

## Competing interests

The authors declare that they have no conflict of interest.

## Ethical approval

Ethics approval was not required for this study according to French legislation.

## Data availability statement

The datasets used and analysed during the current study are available from the corresponding author upon reasonable request.

## References

- Adler PH, Courtney GW, 2019. Ecological and Societal Services of Aquatic Diptera. *Insects* **10**:70.
- Akutsu T, Morse DH, 2020. Male morphology, performance and female mate choice of a swarming insect. *Ecol Entomol* **45**:1080–1087.
- Albrecht GH, Gelvin BR, Hartman SE, 1993. Ratios as a size adjustment in morphometrics. *Am J Phys Anthropol* **91**:441–468.
- Asplen MK, 2018. Dispersal strategies in terrestrial insects. *Curr Opin Insect Sci* **27**:16–20.
- Bauernfeind E, Humpesch UH, 2001. *Die Eintagsfliegen Zentraleuropas (Insecta:Ephemeroptera): Bestimmung und Ökologie*. Wien: Verl. des Naturhistorischen Museums.
- Bhat SS, Zhao J, Sheridan J, Hourigan K, Thompson MC, 2019. Aspect ratio studies on insect wings. *Phys Fluids* **31**:121301.
- Borcard D, Gillet F, Legendre P, 2011. Cluster Analysis. In: Borcard D, Gillet F, Legendre P eds. *Numerical Ecology with R*. New York: Springer, 53–114.
- Brittain JE, 1990. Life history strategies in Ephemeroptera and Plecoptera. In: Campbell IC ed. *Mayflies and Stoneflies: Life Histories and Biology*. Springer Netherlands:1–12.
- Cadmus P, Pomeranz JP, Kraus JM, 2016. Low-cost floating emergence net and bottle trap: Comparison of two designs. *J Freshw Ecol* **31**:653–658.
- Chown SL, Gaston KJ, 2010. Body size variation in insects: a macroecological perspective. *Biol Rev* **85**:139–169.
- Compton S, 2002. Sailing with the wind: dispersal by small flying insects. In: Bullock JM, Kenward R, Hails R eds. *Dispersal Ecology: 42nd Symposium of the British Ecological Society*. Malden: Blackwell Pub.
- Cortelezzi A, Simoy MV, Siri A, Donato M, Cepeda RE et al., 2020. New insights on bioindicator value of Chironomids by using occupancy modelling. *Ecological Indicators* **117**:106619.
- Crawford LA, Keyghobadi N, 2018. Flight morphology corresponds to both surrounding landscape structure and local patch conditions in a highly specialized peatland butterfly (*Lycaena epixanthe*). *Ecol Entomol* **43**:629–639.
- Didham RK, Blakely TJ, Ewers RM, Hitchings TR, Ward JB et al., 2012. Horizontal and vertical structuring in the dispersal of adult aquatic insects in a fragmented landscape. *Fundamental and Applied Limnology / Archiv für Hydrobiologie* **180**:27–40.

- Dijkstra KDB, Monaghan MT, Pauls SU, 2014. Freshwater Biodiversity and Aquatic Insect Diversification. *Annu Rev Entomol* **59**:143–163.
- Downes JA, 1969. The swarming and mating flight of Diptera. *Annu Rev Entomol* **14**:271–298.
- Dudley R, 2002. *The Biomechanics of Insect Flight: Form, Function, Evolution*. Princeton: Princeton University Press.
- Ellington CP, 1984. The Aerodynamics of hovering insect flight. II. Morphological parameters. *Philos Trans R Soc B: Biological Sciences* **305**:17–40.
- Ellington CP, 1999. The novel aerodynamic of insect flight: Applications to micro-air vehicles. *J Exp Biol* **202**:3439–3448.
- Elliott JM, Humpesch UH, 1983. *A Key to the Adults of the British Ephemeroptera with Note on Their Ecology*. Freshwater Biological Association.
- Elliott JM, Sutcliffe DW, 2009. *Freshwater Megaloptera and Neuroptera of Britain And Ireland: Keys to Adults and Larvae, and a Review of Their Ecology*. Cumbria: Freshwater Biological Association.
- Ferrington LC, 2007. Global diversity of non-biting midges (Chironomidae; Insecta-Diptera) in freshwater. *Hydrobiologia* **595**:447.
- Fyodorova MV, Azovsky AI, 2003. Interactions between swarming *Chironomus annularius* (Diptera: Chironomidae) males: Role of acoustic behavior. *J Insect Behav* **16**:295–306.
- García Z, Sarmiento CE, 2012. Relationship between body size and flying-related structures in Neotropical social wasps (Polistinae, Vespidae, Hymenoptera). *Zoomorphology* **131**:25–35.
- Gerber R, Cabon L, Piscart C, Roussel JM, Bergerot B, 2022. Body stores of emergent aquatic insects are associated with body size, sex, swarming behaviour, and dispersal strategies. *Freshw Biol* **67**:2161-2175.
- Gerber R, Piscart C, Roussel JM, Georges R, Houet T et al., 2023. Landscape models can predict the distribution of aquatic insects across agricultural areas. *Land Ecol* **38**: 2917-2929.
- Gullefors B, Petersson E, 1993. Sexual dimorphism in relation to swarming and pair formation patterns in leptocerid caddisflies (Trichoptera: Leptoceridae). *J Insect Behav* **6**:563–577.
- Hall JM, McLoughlin DP, Kathman ND, Yarger AM, Mureli S et al., 2015. Kinematic diversity suggests expanded roles for fly halteres. *Biol Lett* **11**:20150845.
- Harbig RR, 2017. *The Role of Wing Morphology in the Aerodynamics of Insect Flight*. Thesis, Monash University, Australia.

- Hassall C, 2015. Strong geographical variation in wing aspect ratio of a damselfly *Calopteryx maculata* (Odonata: Zygoptera). *PeerJ* **3**:e1219.
- Lancaster J, Downes BJ, 2013. *Aquatic Entomology*. Oxford: Oxford University Press.
- Lancaster J, Downes BJ, 2017. Dispersal traits may reflect dispersal distances, but dispersers may not connect populations demographically. *Oecologia* **184**:171–182.
- Lancaster J, Downes BJ, Lester RE, Rice SP, 2020. Avoidance and aggregation create consistent egg distribution patterns of congeneric caddisflies across spatially variable oviposition landscapes. *Oecologia* **192**:375–389.
- Lê S, Josse J, Husson F, 2008. FactoMineR: An R package for multivariate analysis. *Journal of Statistical Software* **25**:1–18.
- Lyu YZ, Sun M, 2021. Power requirements for the hovering flight of insects with different sizes. *J Insect Physiol* **134**:104293.
- Maechler M, Rousseeuw P, Struyf A, Hubert M, Hornik K, 2021. cluster: Cluster Analysis Basics and Extensions.
- Marden JH, 2000. Variability in the size, composition, and function of insect flight muscles. *Annu Rev Physiol* **62**:157–178.
- May ML, 2019. Dispersal by Aquatic Insects. In: Del-Claro K, Guillermo R eds. *Aquatic Insects: Behavior and Ecology*. Cham: Springer, 35–73.
- Mattila AKL, 2015. Thermal biology of flight in a butterfly: Genotype, flight metabolism, and environmental conditions. *Ecol Evol* **5**(23):5539–5551.
- Moller Pillot H, 2014. *Chironomidae Larvae*, Vol. 3. *Orthoclaadiinae*. KNNV Publishing.
- Montes MP, Mondy C, Polatera PU, 2012. Le nouvel indice I2M2. Indice Invertébrés Multimétrique. Changement de la méthode d'évaluation des cours d'eau: 2.
- Muehlbauer JD, Collins SF, Doyle MW, Tockner K, 2014. How wide is a stream? Spatial extent of the potential “stream signature” in terrestrial food webs using meta-analysis. *Ecology* **95**:44–55.
- Müller K, 1982. The colonization cycle of freshwater insects. *Oecologia* **52**:202–207.
- Müller-Peddinghaus E, 2011. *Flight-morphology of Central European Caddisflies (Insecta: Trichoptera) in Relation to Their Ecological Preferences*. Thesis, Duisburg-Essen University.
- Nilsson AN, 1996. *Aquatic Insects of North Europe: A Taxonomic Handbook*. Stenstrup, Denmark: Apollo Books.



- Niven JE, Scharlemann JPW, 2005. Do insect metabolic rates at rest and during flight scale with body mass? *Biol Lett* **1**:346–349.
- Nowinszky L, Kiss O, Puskás J, 2014. Swarming patterns of light trapped individuals of caddisfly species (Trichoptera) in Central Europe. *Open Life Sci* **9**:417–430.
- Oksanen J, Blanchet FG, Kindt R, Legendre P, Minchin PR et al., 2015. *Vegan Community Ecology Package: Ordination Methods, Diversity Analysis and Other Functions for Community and Vegetation Ecologists*. R package ver 2–3.
- Peckarsky BL, McIntosh AR, Caudill CC, Dahl J, 2002. Swarming and mating behavior of a mayfly *Baetis bicaudatus* suggest stabilizing selection for male body size. *Behav Ecol Sociobiol* **51**:530–537.
- Peig J, Green AJ, 2009. New perspectives for estimating body condition from mass/length data: the scaled mass index as an alternative method. *Oikos* **118**:1883–1891.
- Peredo Arce A, Hörren T, Schletterer M, Kail J, 2021. How far can EPTs fly? A comparison of empirical flying distances of riverine invertebrates and existing dispersal metrics. *Ecol Indic* **125**:107465.
- Ptatscheck C, Gansfort B, Majdi N, Traunspurger W, 2020. The influence of environmental and spatial factors on benthic invertebrate metacommunities differing in size and dispersal mode. *Aquat Ecol* **54**:447–461.
- R Core Team, 2021. *R: A Language and Environment for Statistical Computing*. Vienna, Austria: R Foundation for Statistical Computing.
- Raitif J, Roussel JM, Olmos M, Piscart P, 2022. Assessing spatial deposition of aquatic subsidies by insects emerging from agricultural streams. *Sci Total Environ* **837**:155686.
- Reynolds AM, 2013. Beating the odds in the aerial lottery: Passive dispersers select conditions at takeoff that maximize their expected fitness on landing. *Am Nat* **181**:555–561.
- Rupprecht R, 2009. Attempts to re-colonise water insects in German brooks. *Aquat Insects* **31**:429–441.
- Sarremejane R, Cid N, Stubbington R, Datry T, Alp M et al. 2020. DISPERSE, a trait database to assess the dispersal potential of European aquatic macroinvertebrates. *Sci Data* **7**:386.
- Shyy W, Kang C, Chirarattananon P, Ravi S, Liu H, 2016. Aerodynamics, sensing and control of insect-scale flapping-wing flight. *Proc R Soc A: Mathematical, Physical and Engineering Sciences* **472**:20150712.
- Steyn VM, Mitchell KA, Terblanche JS, 2016. Dispersal propensity, but not flight performance, explains variation in dispersal ability. *Proc R Soc B: Biological Sciences* **283**:20160905.
- Sullivan RT, 1981. Insect Swarming and Mating. *The Fla Entomol* **64**:44–65.

- Tercel MPTG, Veronesi F, Pope TW, 2018. Phylogenetic clustering of wingbeat frequency and flight-associated morphometrics across insect orders. *Physiol Entomol* **43**:149–157.
- Turlure C, Schtickzelle N, Van Dyck H, Seymoure B, Rutowski R, 2016. Flight morphology, compound eye structure and dispersal in the bog and the cranberry fritillary butterflies: An inter- and intraspecific comparison. *PLoS ONE* **11**:e0158073.
- Vallenduuk HJ, Moller Pillot H, 2007. *Chironomidae Larvae of the Netherlands and Adjacent Lowlands: General Ecology and Tanypodinae*. KNNV Publishing.
- Warton DI, Duursma RA, Falster DS, Taskinen S, 2012. smatr 3: An R package for estimation and inference about allometric lines. *Methods Ecol Evol* **3**:257–259.
- Warton DI, Wright IJ, Falster DS, Westoby M, 2006. Bivariate line-fitting methods for allometry. *Biol Rev* **81**:259–291.
- Wootton RJ, 1992. Functional Morphology of Insect Wings. *Annu Rev Entomol* **37**:113–140.
- Wootton RJ, 2020. Dragonfly flight: Morphology, performance and behaviour. *Int J Odonatol* **23**:31–39.

Accepted Manuscript

**Table 1 Summary table of dispersal traits *per taxon*. Rows correspond to the lowest taxonomical taxon considered in the analyses.**

'Order' column: D, Diptera; E, Ephemeroptera; M, Megaloptera; P, Plecoptera; T, Trichoptera. The 'Short name' column refers to the name used in Figure 3. The 'Voltinism', 'Affinity for dispersal', and 'Adult lifespan' columns are issued from the DISPERSE database (Sarremejane et al. 2020). 'Voltinism' refers to the potential number of reproductive cycles *per year*. 'Affinity for dispersal' describes whether the taxa have a weak affinity for dispersal ("weak"), a strong affinity for active dispersal ("active"), or a strong affinity for passive dispersal ("passive"). The 'Swarming behavior' column refers to whether insects have a swarming behavior before mating (swarm) or not (no swarm).

<i>Order</i>	<i>Family</i>	<i>Taxon</i>	<i>Short name</i>	<i>Cluster</i>	<i>Number of individuals per sex</i> ♀♂	<i>Affinity for dispersal</i>	<i>Voltinism</i>	<i>Adult lifespan</i>	<i>Swarming behavior</i>	<i>Swarm references</i>
T	Glossosomatidae	<i>Agapetus</i> spp	Agap	1	23:7	Weak	Univoltine	1 week to 1 month	no swarm	Müller-Peddinghaus 2011
T	Lepidostomatidae	<i>Lepidostoma hirtum</i>	Lepi		13:17	Active	Univoltine	Less than 1 week	no swarm	Müller-Peddinghaus 2011
T	Psychomyiidae	<i>Lype</i> spp	Lype		15:15	Weak	Multivoltine	1 week to 1 month	swarm	Müller-Peddinghaus 2011
P	Nemouridae	<i>Nemoura cinerea</i>	Nemo		16:14	Active	Univoltine	1 month to 1 year	no swarm	Brittain 1990
T	Polycentropodidae	<i>Polycentropus</i> spp.	Poly		20:3	Active	Univoltine	1 week to 1 month	swarm	Müller-Peddinghaus 2011
D	Psychodidae	Psychodidae	Psyc		14:16	Weak	Multivoltine	Less than 1 week	no swarm	Downes 1969
D	Simuliidae	Simuliinae	Simu		17:13	Passive	Multivoltine	1 week to 1 month	swarm	Downes 1969
E	Baetidae	<i>Baetis rodhani</i>	Baet	2	14:9	Active	Multivoltine	Less than 1 week	swarm	Elliott and Humpesch 1983
E	Baetidae	<i>Cloeon dipterum</i>	Cloe		15:14	Active	Multivoltine	1 week to 1 month	swarm	Elliott and Humpesch 1983
E	Leptophlebiidae	<i>Habrophlebia</i> spp	Habr		20:15	Weak	Univoltine	Less than 1 week	swarm	Bauernfeind et Humpesch 2001
P	Leuctridae	<i>Leuctra</i> spp	Leuc		15:15	Weak	Univoltine	1 month to 1 year	no swarm	Brittain 1990
E	Ephemerellidae	<i>Serratella ignita</i>	Serr		8:10	Active	Univoltine	Less than 1 week	swarm	Elliott and Humpesch 1983
P	Chloroperlidae	<i>Siphonoperla torrentium</i>	Siph	15:15	Weak	Univoltine	1 week to 1 month	no swarm	Brittain 1990	
D	Chironomida	<i>Brillia bifida</i>	Bril	3	15:15	Weak	Multivolt	Less than 1	swarm	Moller Pillot 2014

Order	Family	Taxon	Short name	Cluster	Number of individuals per sex ♀♂	Affinity for dispersal	Voltinism	Adult lifespan	Swarming behavior	Swarm references
D	Chironomidae	Chironomini	Chir		14:16	Passive	Multivoltine	Less than 1 week	swarm	Downes 1969
D	Dolichopodidae	Dolichopodidae	Doli		15:15	Weak	Univoltine	NA	no swarm	Downes 1969
D	Empididae	Empididae	Empi		18:16	Weak	Univoltine	NA	swarm	Downes 1969
D	Chironomidae	<i>Rheotanytarsus curtistylus</i>	Rheo		10:18	Passive	Multivoltine	Less than 1 week	swarm	Vallenduuk et Pillot 2007
D	Chironomidae	<i>Corynoneura</i> spp.	Cory		3:19	Weak	Multivoltine	Less than 1 week	swarm	Moller Pillot 2014
D	Chironomidae	<i>Nanocladius</i> spp.	Nano	4	9:19	Weak	Multivoltine	Less than 1 week	swarm	Moller Pillot 2014
D	Chironomidae	<i>Thienemanniella</i> spp.	Thie		12:15	Weak	Multivoltine	Less than 1 week	swarm	Downes 1969
P	Perlidae	<i>Dinocras cephalotes</i>	Dino	5	14:0	Weak	Semi-voltine	1 week to 1 month	no swarm	Brittain 1990
E	Ephemerae	<i>Ephemera danica</i>	Ephe		8:10	Active	Semi-voltine	Less than 1 week	swarm	Elliott and Humpesch 1983
T	Limnephilidae	<i>Glyptotendipes pellucidus</i>	Glyp		14:16	Active	Univoltine	1 month to 1 year	no swarm	Gullefors and Petersson 1993
T	Hydropsychidae	<i>Hydropsyche</i> sp.	Hydr		18:12	Active	Univoltine	1 week to 1 month	swarm	Müller-Peddinghaus 2011
P	Perlodidae	<i>Isoperla grammatica</i>	Isop		20:10	Active	Univoltine	1 month to 1 year	no swarm	Rupprecht 2009
T	Limnephilidae	<i>Limnephilus</i> spp.	Limn		15:14	Active	Univoltine	1 month to 1 year	no swarm	Müller-Peddinghaus 2011
T	Rhyacophilidae	<i>Rhyacophila dorsalis</i>	Rhya		19:11	Active	Univoltine	1 week to 1 month	no swarm	Müller-Peddinghaus 2011
T	Sericostomidae	<i>Sericostoma</i> sp.	Seri		14:16	Weak	Univoltine	1 week to 1 month	no swarm	Müller-Peddinghaus 2011
M	Sialidae	<i>Sialis</i> spp.	Sial		11:19	Weak	Semi-voltine	1 week to 1 month	no swarm	Elliott and Sutcliffe 2009
T	Limnephilidae	<i>Stenophylax lateralis</i>	Sten		14:16	Active	Univoltine	1 month to 1 year	no swarm	Müller-Peddinghaus 2011

<i>Order</i>	<i>Family</i>	<i>Taxon</i>	<i>Short name</i>	<i>Cluster</i>	<i>Number of individuals per sex</i> ♀♂	<i>Affinity for dispersal</i>	<i>Voltinism</i>	<i>Adult lifespan</i>	<i>Swarming behavior</i>	<i>Swarm references</i>
D	Tipulidae	Tipulidae	Tipu	6	11:19	Weak	Univoltine	1 week to 1 month	swarm	Downes 1969 Sullivan 1981

## List of figures

**Figure 1** Map representing the sampling sites, Brittany region (France).

**Figure 2** Standardized major axis (SMA) regression between the log-values of body length (mm) and of (A) forewing length (mm), (B) wing area (mm<sup>2</sup>), (C) thorax width (mm), (D) the aspect ratio, (E) the radius of the second moment (*RSM*) of wing area, and (F) dry body mass (mg). All regressions were significant ( $P < 0.001$ ). The linear equations include the slope ( $b$ ) and elevation:  $Y = bX + \text{elevation}$ . Coefficient  $R^2$  is the correlation between residual and fitted values. Orders are showed for information purposes. The link between length parameters, the aspect ratio, the *RSM*, and body length is proportional (*i.e.*, isometric) when  $b = 1$ . As area  $A$  corresponds to the squared body length ( $A = L^2$ ), the link between wing area and body length is isometric when  $b = 2$ . Dry body mass and body length are isometric when  $b = 3$  (volume  $V$  is related to mass  $M$ , so that  $M \approx V = L^3$ ).

**Figure 3** (A) Silhouette plot showing the quality of the clusters. The silhouette width  $S$  was computed for each taxon. The average  $S$  was calculated *per* cluster for each partition. Average  $S$  ranged from -1 to 1: 1 = a perfect quality cluster, and 0 = a bad quality cluster (except for clusters composed of only 1 taxon). (B) Circle showing the contribution of the variables according to components 1 and 2. *RSM*, radius of the second moment of wing area. (C) Principal component analyses on all individuals. Ellipses represent the 0.95 confidence interval for the individuals of each taxon around its centroid. Colors represent the 6 clusters. Point sizes are proportional to the mean size of each taxon. Short names are given in Table 1.

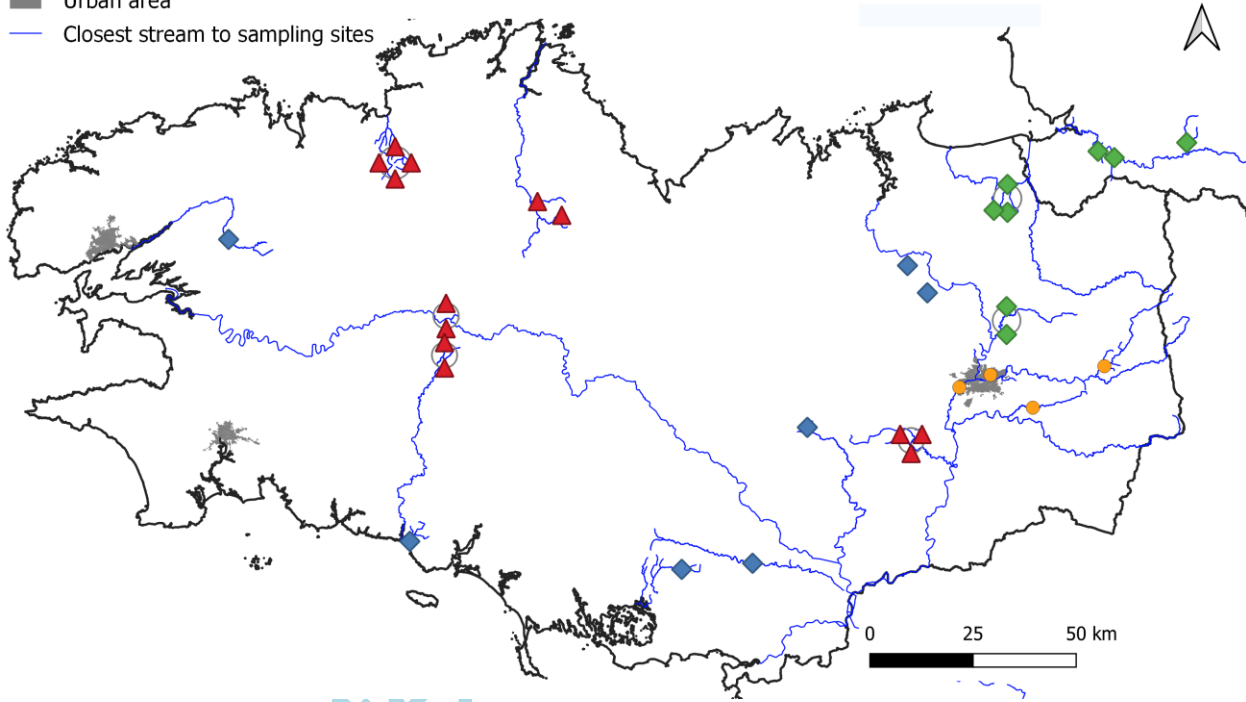
**Figure 4** Characterization of the 6 clusters (1-6) determined by hierarchical clustering. Each bar represents the mean of a normalized parameter for a given cluster. *RSM*, radius of the second moment. For each morphological parameter taken independently, letters between brackets indicate significant differences between clusters, ranging from  $a$  (highest mean) to  $f$  (lowest mean). Error bars indicate standard errors.

**Figure 5** Principal component analyses on all individuals. Point sizes are proportional to the mean size of each taxon. Black squares, centroids of each cluster. Colors represent the projected trait modalities: (A) dispersal; (B) swarming behavior; (C) number of generations *per* year (voltinism); (D) adult lifespan. The adult lifespan of Dolichopodidae and Empididae is not known (NA).

Figure 1

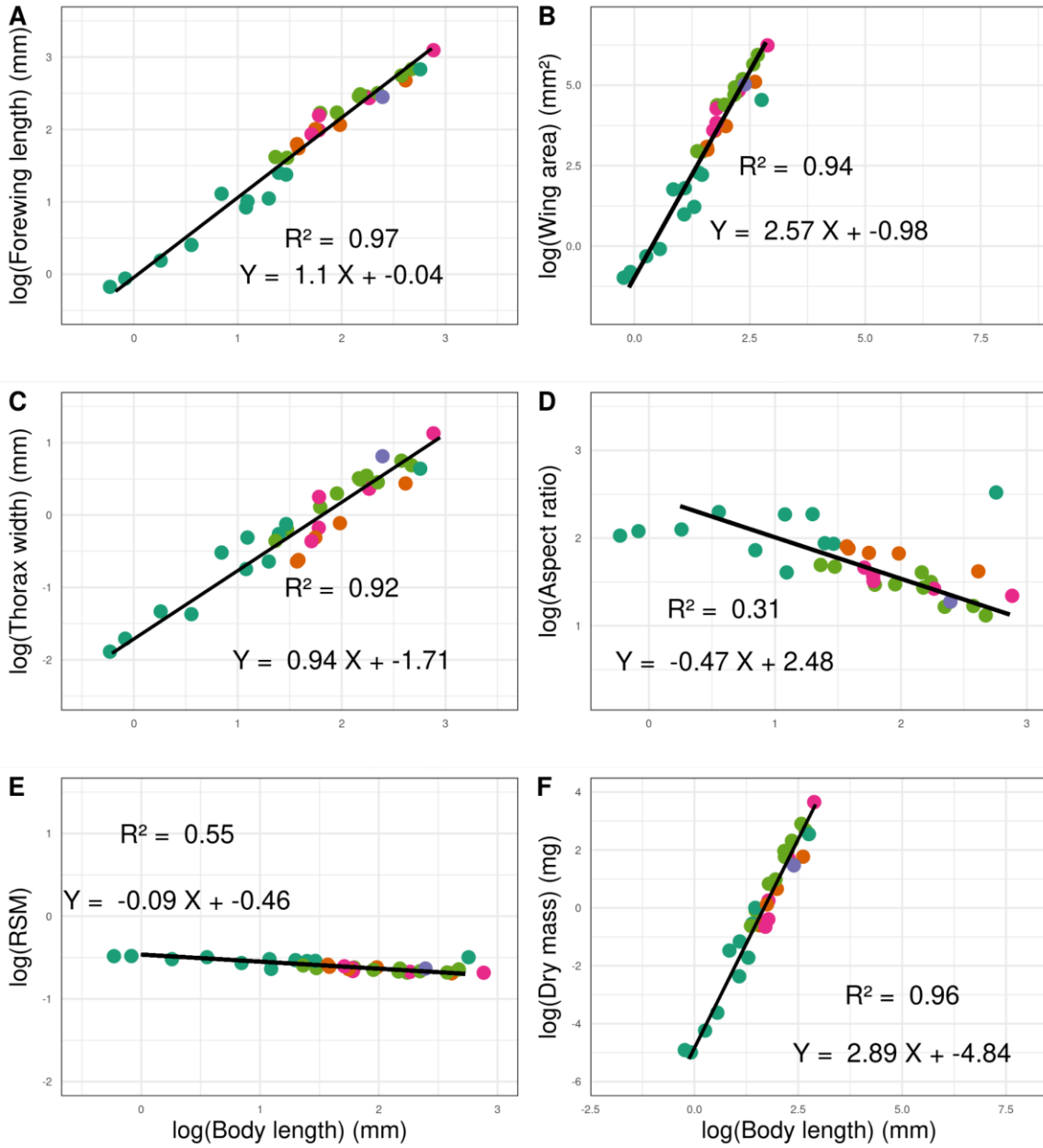
*Sampling sites*

- ◆ Citizen science collects with aquatic emergence traps
  - ◆ Laboratory collects with aquatic emergence traps
  - ▲ Citizen science collects with malaise traps
  - Opportunistic collect with mowing nets
- Urban area
- Closest stream to sampling sites



Accepte

Figure 2

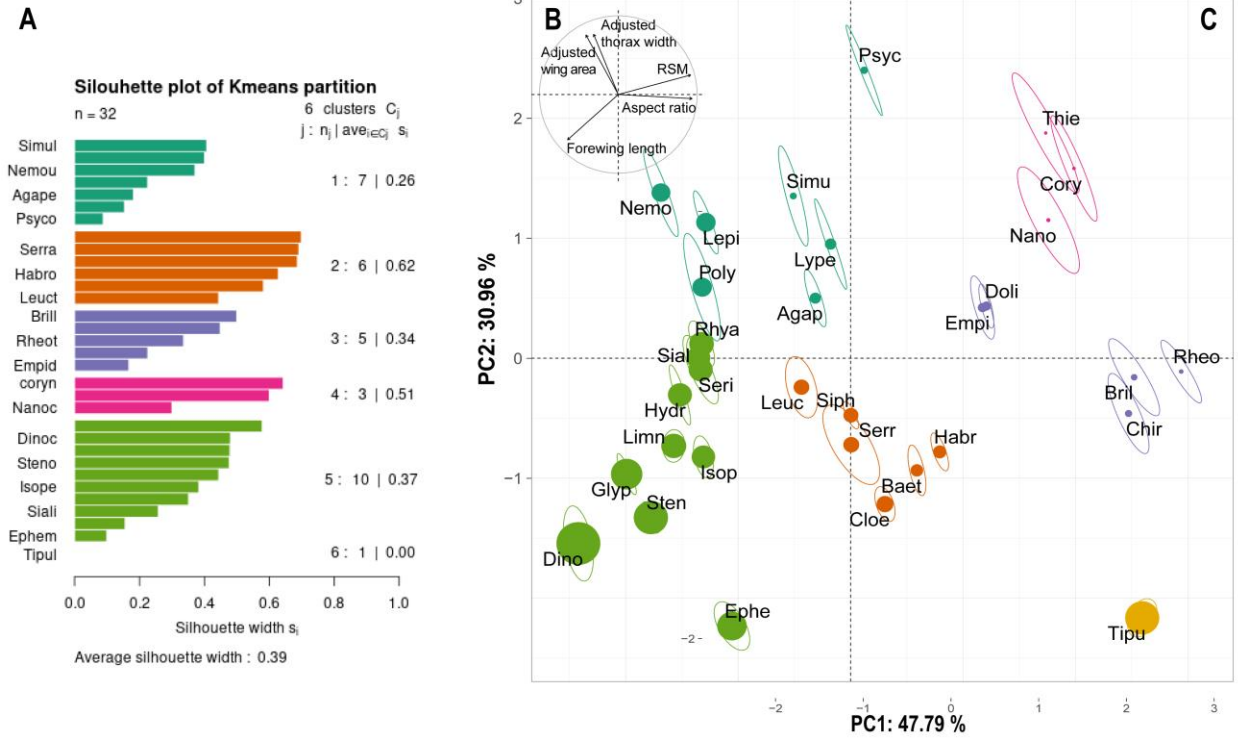


Order

- Diptera
- Megaloptera
- Plecoptera
- Ephemeroptera
- Trichoptera

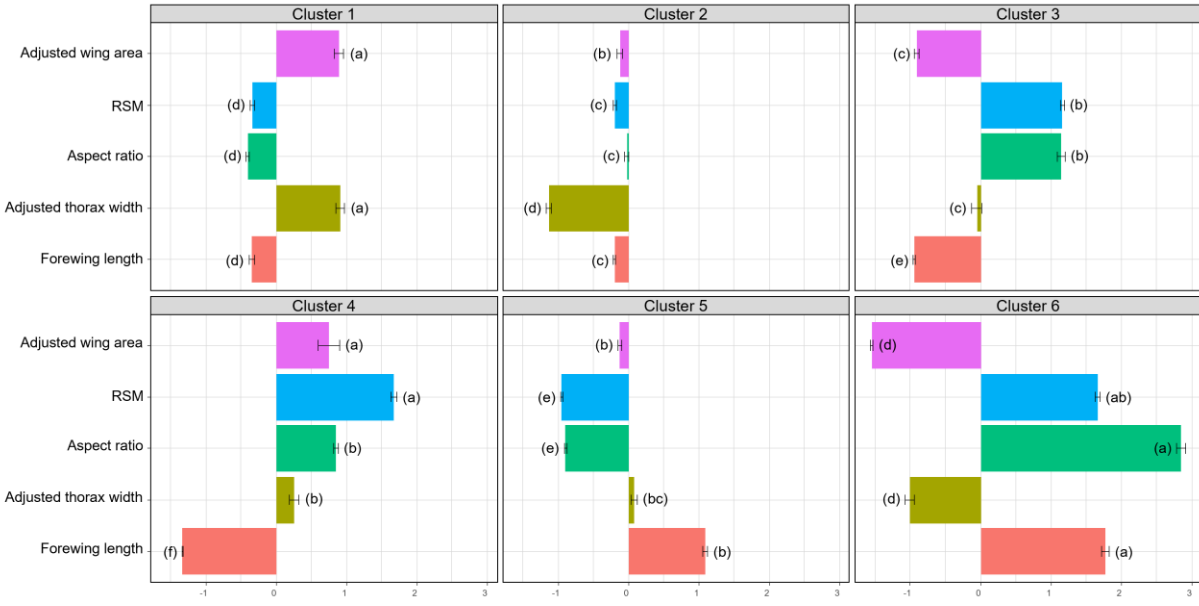


Figure 3



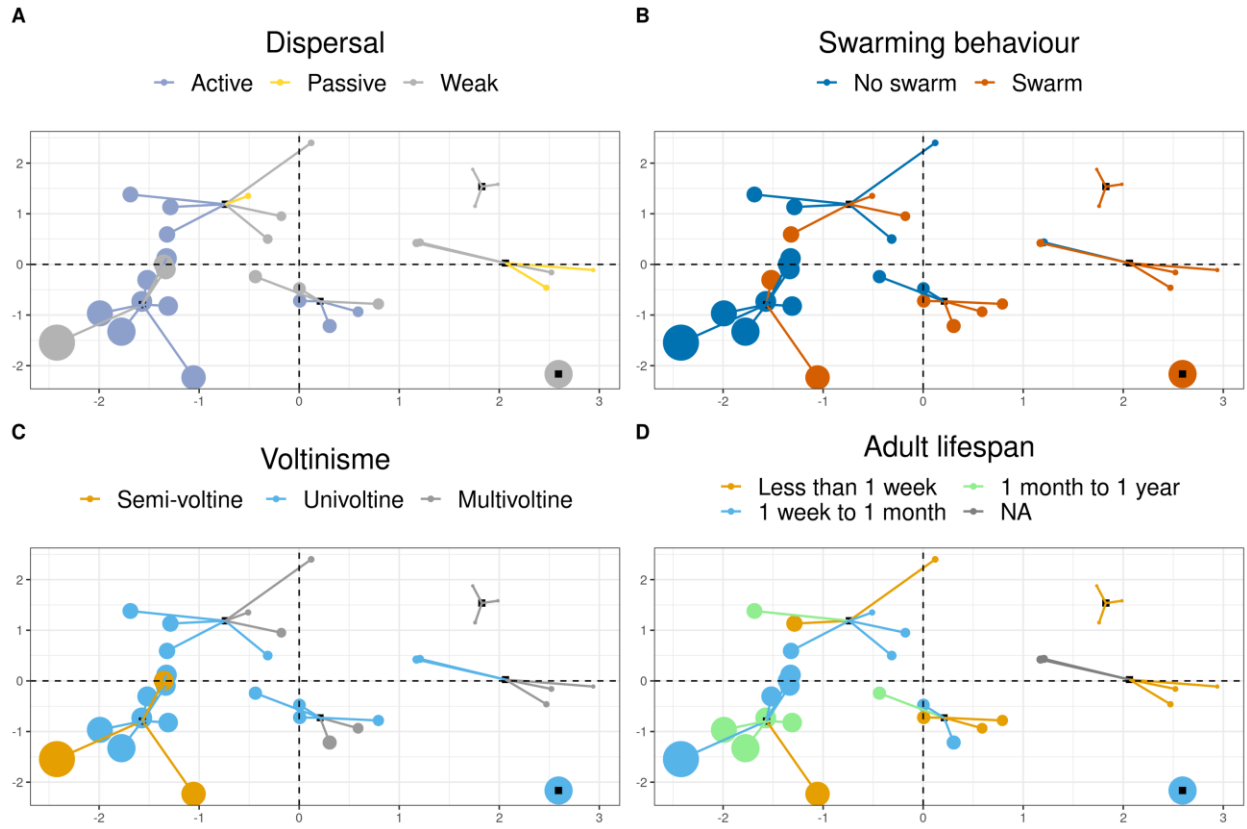
Accepted

Figure 4



Accepted Manuscript

Figure 5



Accepted