



HAL
open science

THREE-DIMENSIONAL OSTEOCYTE LACUNO-CANALICULAR NETWORK AT THE BONE IMPLANT INTERFACE

Khaoula Abouzaid, Thomas Reiss, Guillaume Haiat, Hugues Albin Lomami,
Elsa Vennat, Sophie Le Cann

► **To cite this version:**

Khaoula Abouzaid, Thomas Reiss, Guillaume Haiat, Hugues Albin Lomami, Elsa Vennat, et al..
THREE-DIMENSIONAL OSTEOCYTE LACUNO-CANALICULAR NETWORK AT THE BONE
IMPLANT INTERFACE. 28th Congress of the European Society of Biomechanics, July 9-12, 2023,
Maastricht, the Netherlands, Jul 2023, Maastricht, Netherlands. hal-04281950

HAL Id: hal-04281950

<https://hal.science/hal-04281950v1>

Submitted on 14 Nov 2023

HAL is a multi-disciplinary open access archive for the deposit and dissemination of scientific research documents, whether they are published or not. The documents may come from teaching and research institutions in France or abroad, or from public or private research centers.

L'archive ouverte pluridisciplinaire **HAL**, est destinée au dépôt et à la diffusion de documents scientifiques de niveau recherche, publiés ou non, émanant des établissements d'enseignement et de recherche français ou étrangers, des laboratoires publics ou privés.



Distributed under a Creative Commons Attribution 4.0 International License

THREE-DIMENSIONAL OSTEOCYTE LACUNO-CANALICULAR NETWORK AT THE BONE IMPLANT INTERFACE

Khaoula Abouzaid (1), Thomas Reiss (2), Guillaume Haiat (1), Hugues Albini-Lomami (1), Elsa Vennat (2), Sophie Le Cann (1)

1. CNRS, MSME UMR 8208, France; 2. Université Paris-Saclay, CentraleSupélec, ENS Paris-Saclay, CNRS, LMPS, France

Introduction

Osteocytes are the most abundant cell type found in bones and play a key role in the regulation of bone metabolism. In woven bone, formed after implantation, osteocytes communicate with the implant surface via lacuno-canalicular network (LCN) and detect changes in mechanical loading by releasing numerous biochemical messengers that modulate bone metabolism [1,2]. It is not fully understood how the osteocyte extensive and intricate LCN adapts to the presence of an implant, to provide the mechanical stability, exchange of nutrients, and vascularization necessary for successful osseointegration [3]. The aim of this study is to investigate the LCN formed in peri-implant newly-formed bone tissue, to understand its structural complexity and differences compared to a mature bone tissue.

Methods

Sample. Cortical bone from a rabbit tibia was retrieved after the osseointegration of a standardized coin-shaped implant for 7 weeks (TiAl6V4, Ø5-H3mm). Samples were stored immediately following surgical removal, embedded in PMMA, sectioned to a baton of $2 \times 5 \times 2 \text{ mm}^3$ and polished to expose the mineralized tissue at the BII.

Image acquisition. A FIB-SEM (FEI Helios NanoLab 660) was used in BSE mode to image a $20 \times 30 \times 30 \text{ }\mu\text{m}^3$ region close to the implant. The 3D output images (stack of 1027 2D grayscale images) were obtained using a “Auto slice and view” software (Fig 1A), with an anisotropic pixel size of $16.78 \times 16.78 \times 20 \text{ nm}$.

Image processing was carried out using Fiji. Local excessive brightness was removed using a bandpass filter. A 3D Gaussian filter was then applied to reduce noise (std dev of 3pixels). Moreover, artifacts present in the image (eg saturation close to a cavity) were reduced by applying Kuwahava filter (sampling window width of 7 pixels). Finally, the lacunae canaliculi network was segmented from the mineralized bone (visual threshold).

Data analysis. Two preferential subvolumes with limited artefacts ($9 \times 9 \times 16 \text{ }\mu\text{m}$) were isolated around the osteocyte cavity, with visual differences in porosity. Canaliculi thickness maps were extracted using BoneJ plugin, and analyzed using a matlab routine.

Results and discussion

An ellipsoidal osteocyte lacuna was observed in the center of the imaged volume, connected to a dense meshwork of canaliculi (Fig 1B) and visually aligned parallel with the direction of the implant surface. The two isolated subvolumes presented different local

porosity of 0.53% (fig 1.C1) and 2.34% (fig 1.D1), associated with relative maximum canaliculi thickness of $200 \pm 60 \text{ nm}$ (fig 1.C2) and $240 \pm 80 \text{ nm}$ (fig 1.D2). This difference of density may be due to the heterogeneity of the newly formed bone. Further analysis is ongoing (orientation, connectivity, etc) as well as comparison with data from a mature bone region, to highlight and understand differences in the bone tissue local micro and sub-nanostructure, close to an implant[4,5].

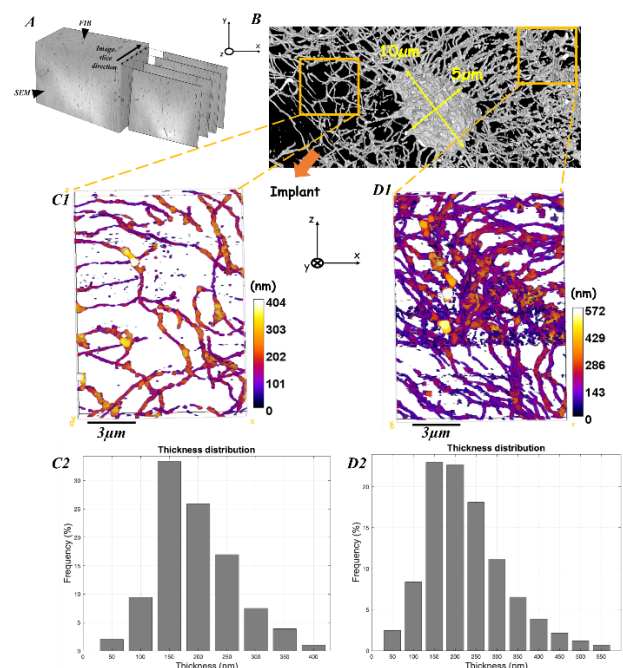


Figure 1: FIB-SEM “slice and view” (A); LCN network in the immature bone tissue (B), canaliculi connected to the same osteocyte (C1) and (D1), thickness distribution (C2) and (D2).

References

1. Haridy, Y., et al. Science advances, 14, eabb9113. 2021.
2. Shah, F.A. et al. Jour. of Dental Research, 9, 977-986, 2018.
3. Shah, F.A. et al., Acta Biomater., 84 :1-15, 2019
4. Buenzli, P. R., et al. Bone, 75, 144-150. 2015.
5. Turner, C. H., et al. Bone, 16, 283-285. 1995.

Acknowledgements

Funding by Paris Ile-de-France Region (DIM “Respire”), the CNRS (MITI interdisciplinary program) and the EU H2020 research and innovation programme (the MSCA-IF Bomb project #797764 and the ERC-CoG BoneImplant project #682001). We thank the EquipEx MATMECA for access to the FIB-SEM.

