

## SUPPLEMENTARY DATA

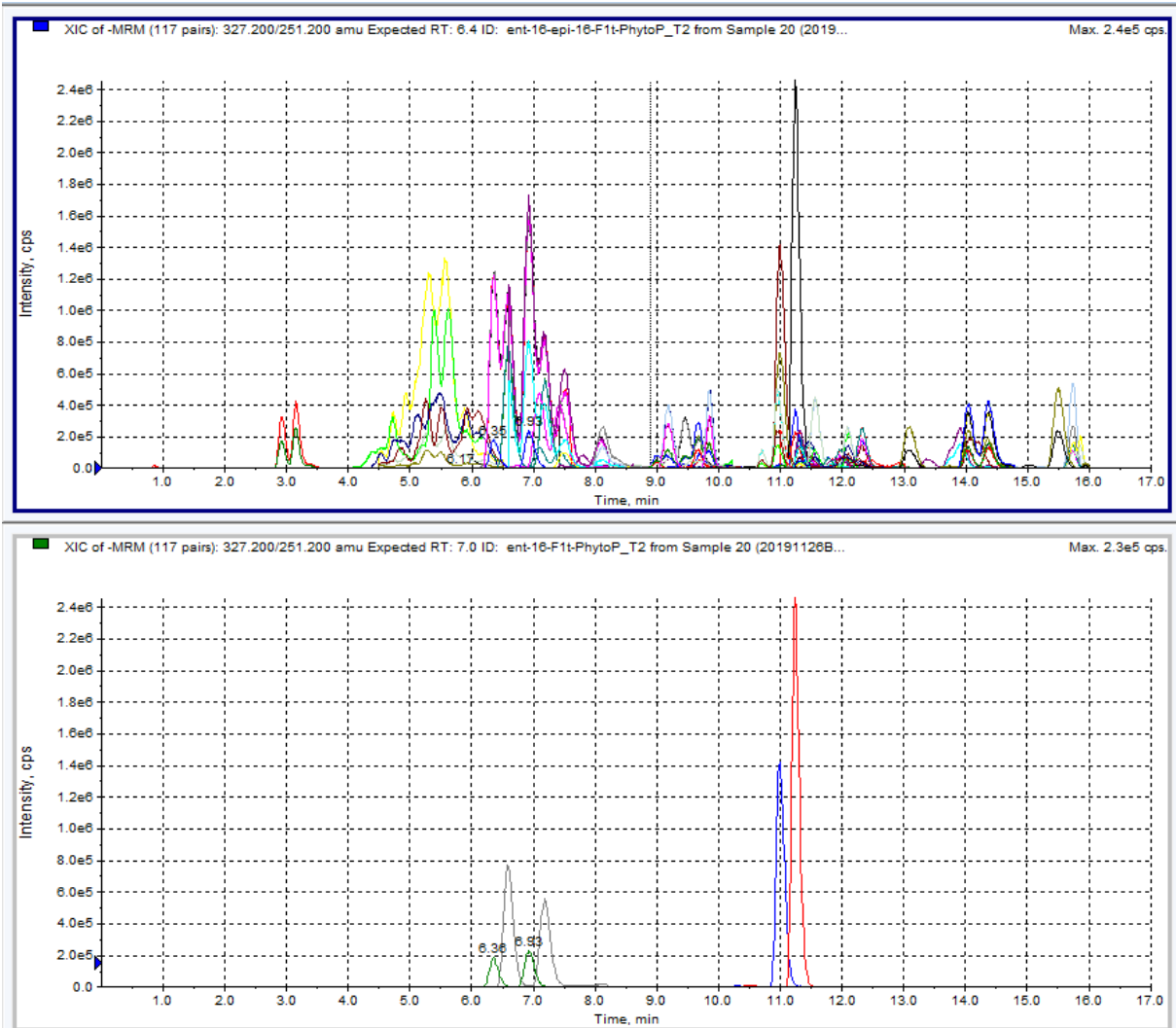
### 1. Phytoprostanes data (chromatographic profile from detected LC-MS(/MS) features)

For each compound:

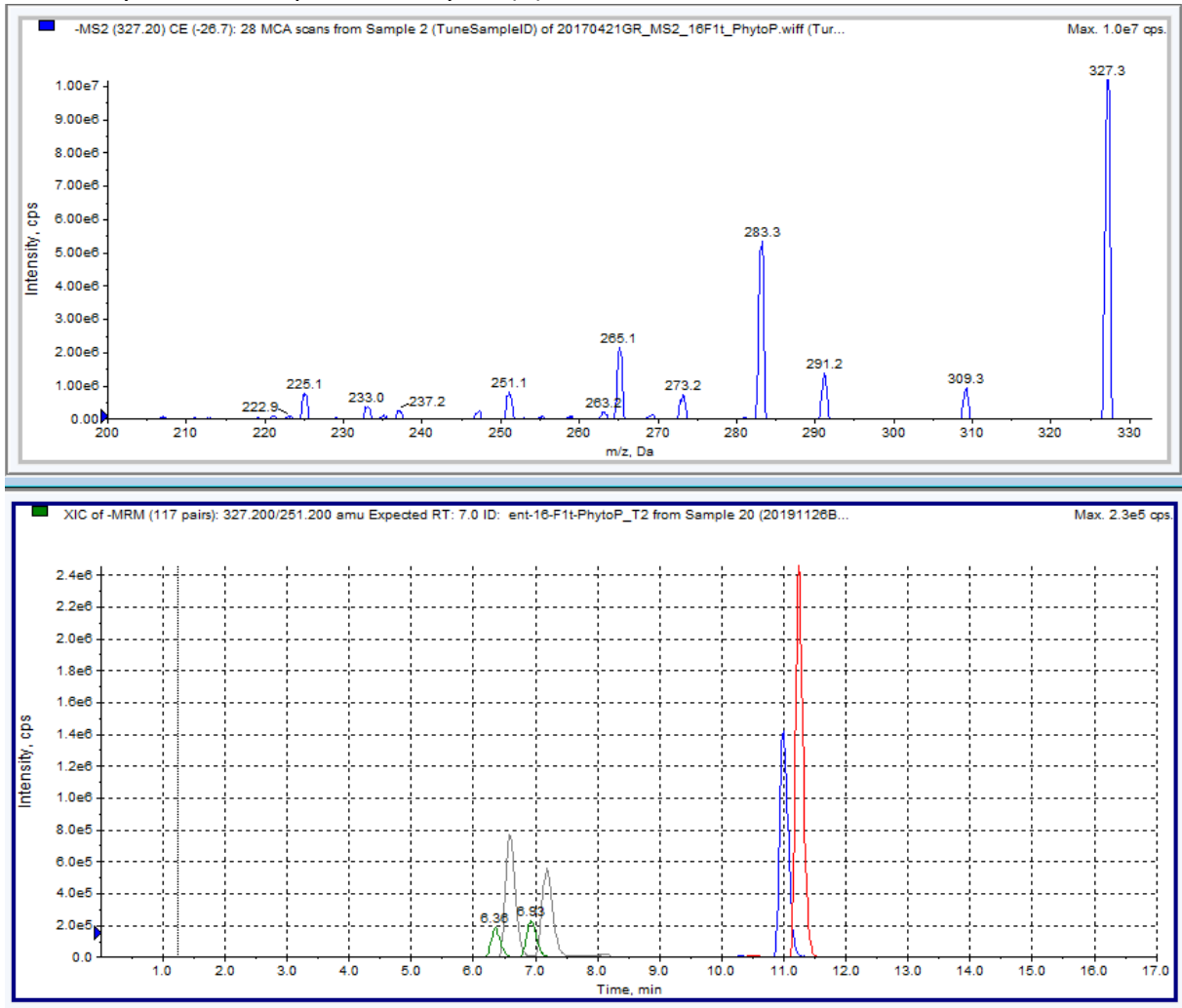
A- Example of electrospray ionization (ESI) extract ion chromatogram (XIC) of selected MRM

B- MS/MS spectrum

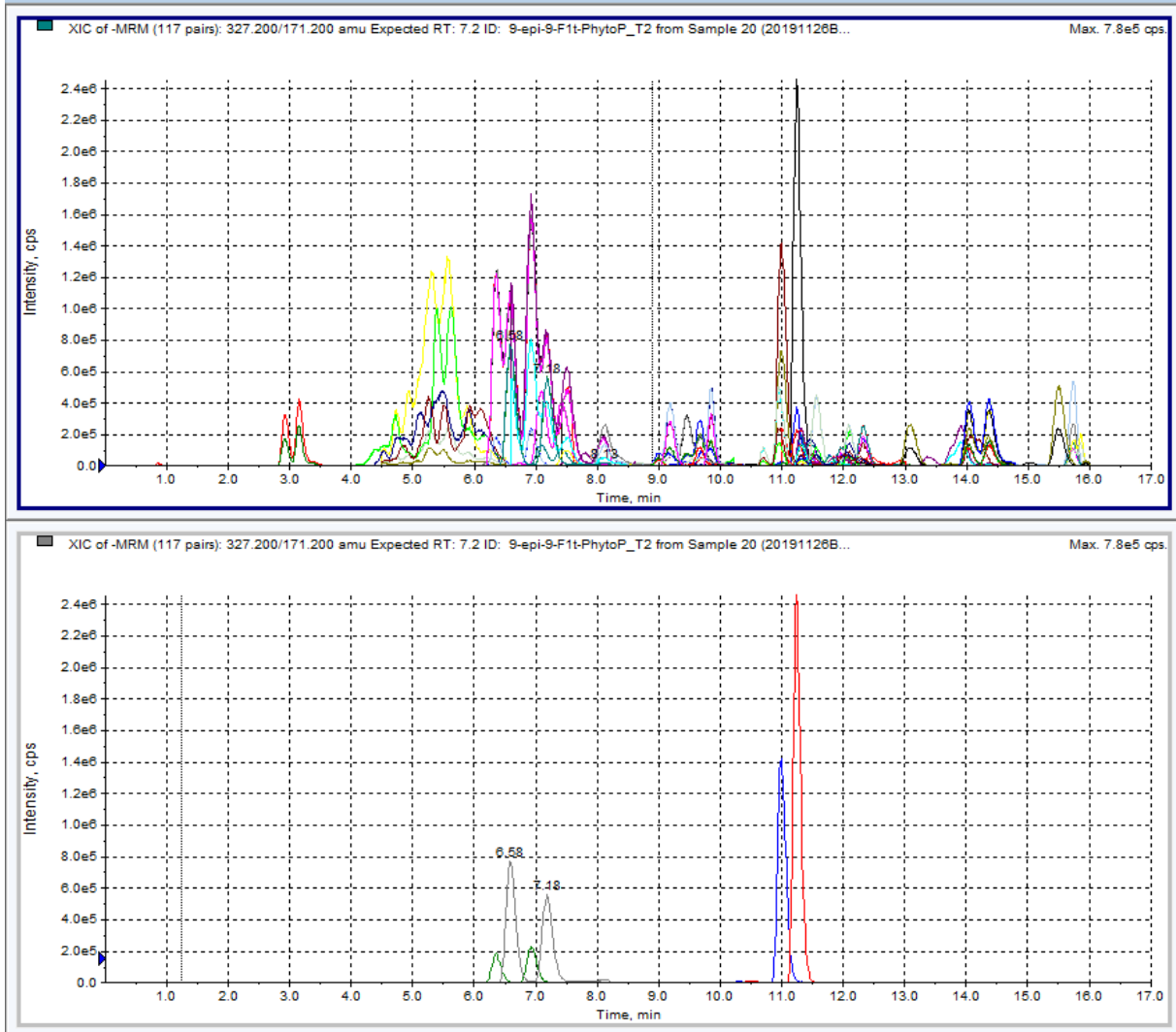
#### 16-F<sub>1t</sub>-PhytoP and 16-*epi*-16-F<sub>1t</sub>-PhytoP (A)



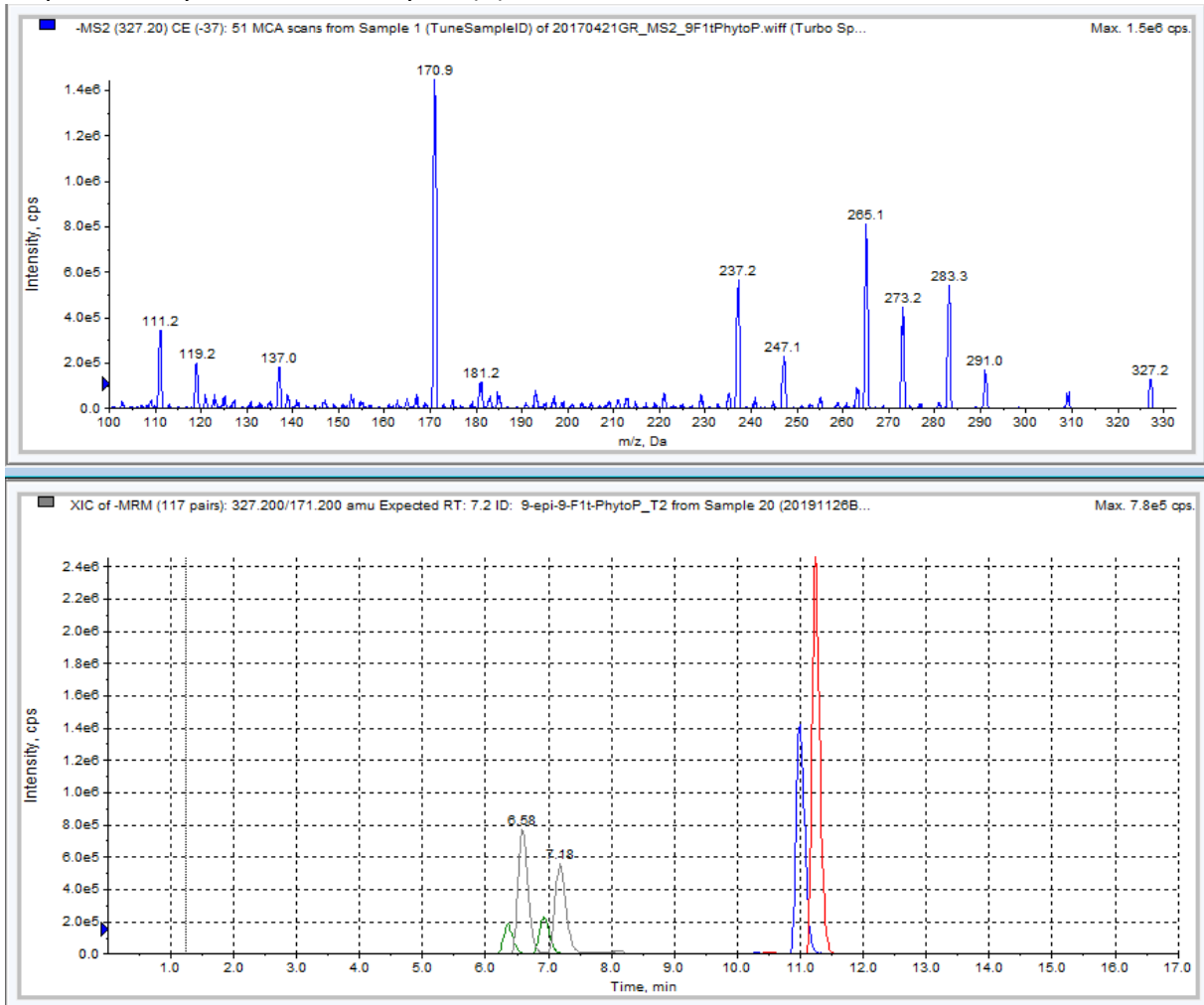
# 16-F<sub>1t</sub>-PhytoP and 16-*epi*-16-F<sub>1t</sub>-PhytoP (B)



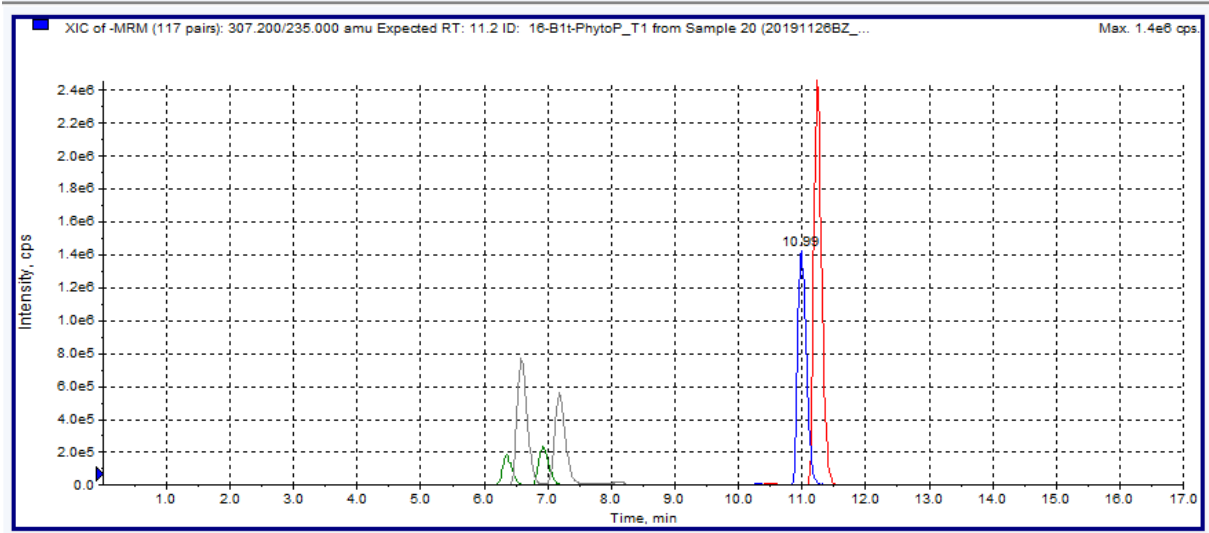
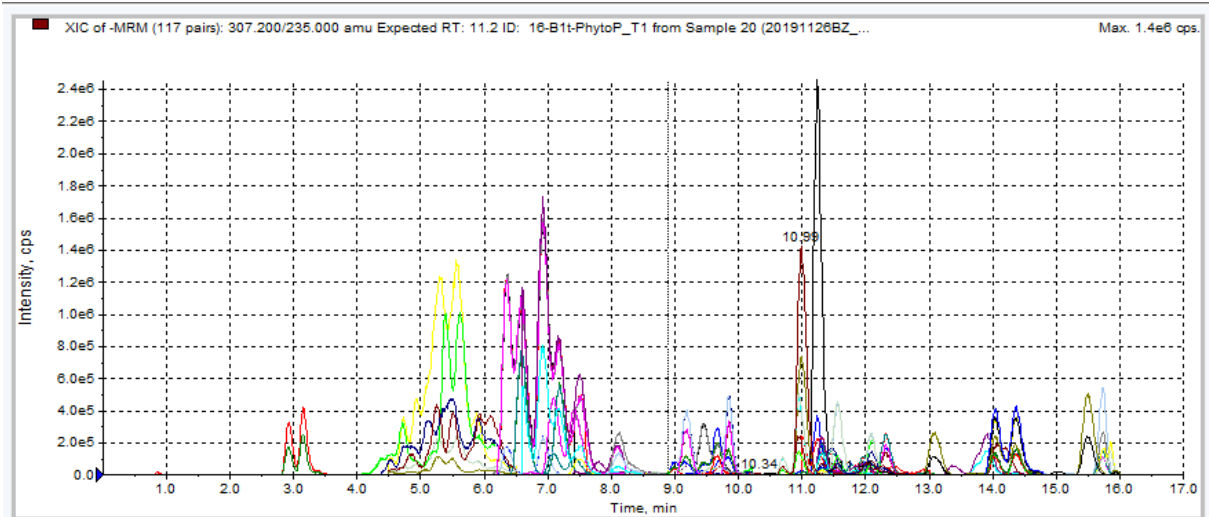
9-*epi*-9-F<sub>1t</sub>-PhytoP and 9-F<sub>1t</sub>-PhytoP (A)



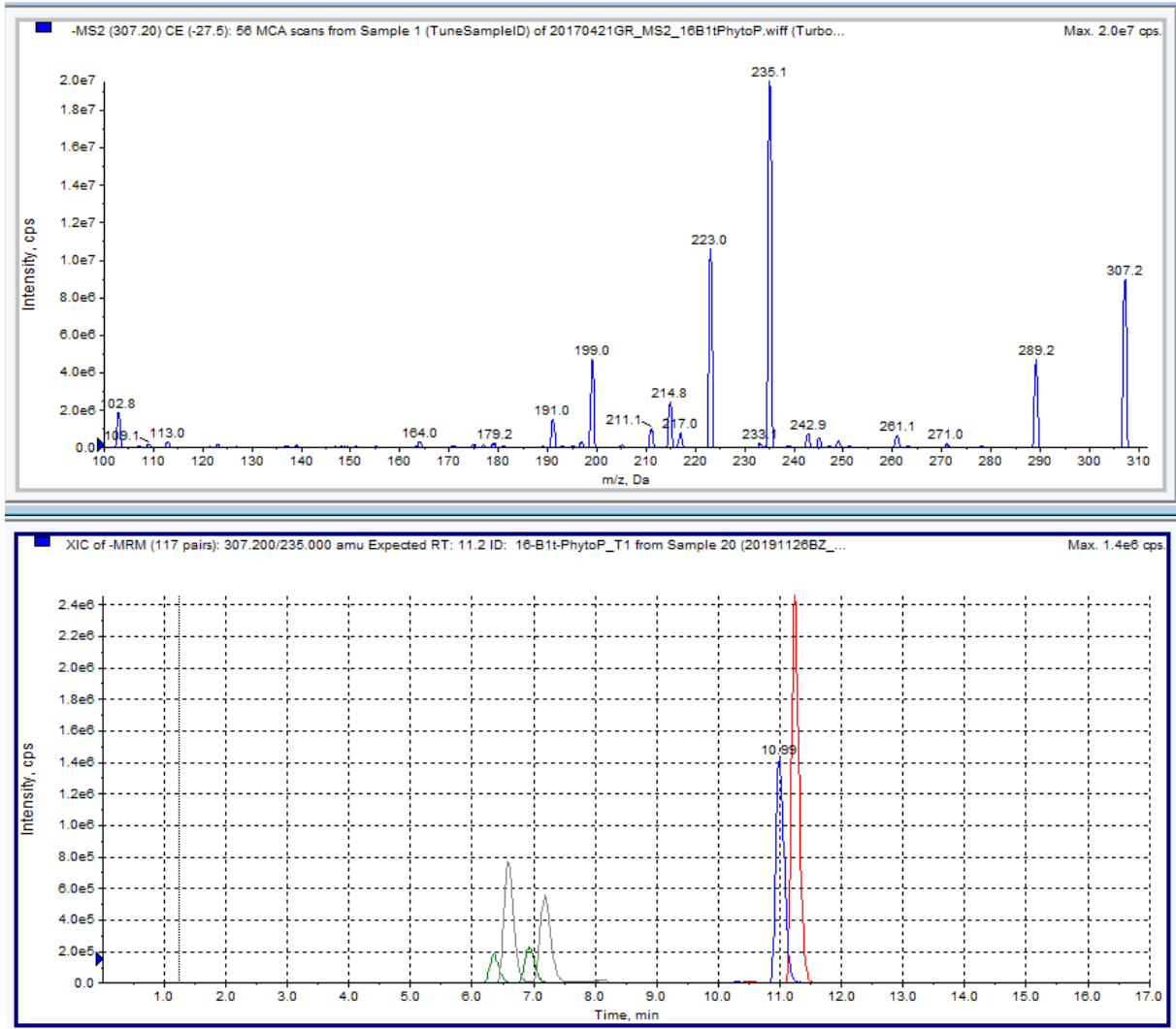
### 9-*epi*-9-F<sub>1t</sub>-PhytoP and 9-F<sub>1t</sub>-PhytoP (B)



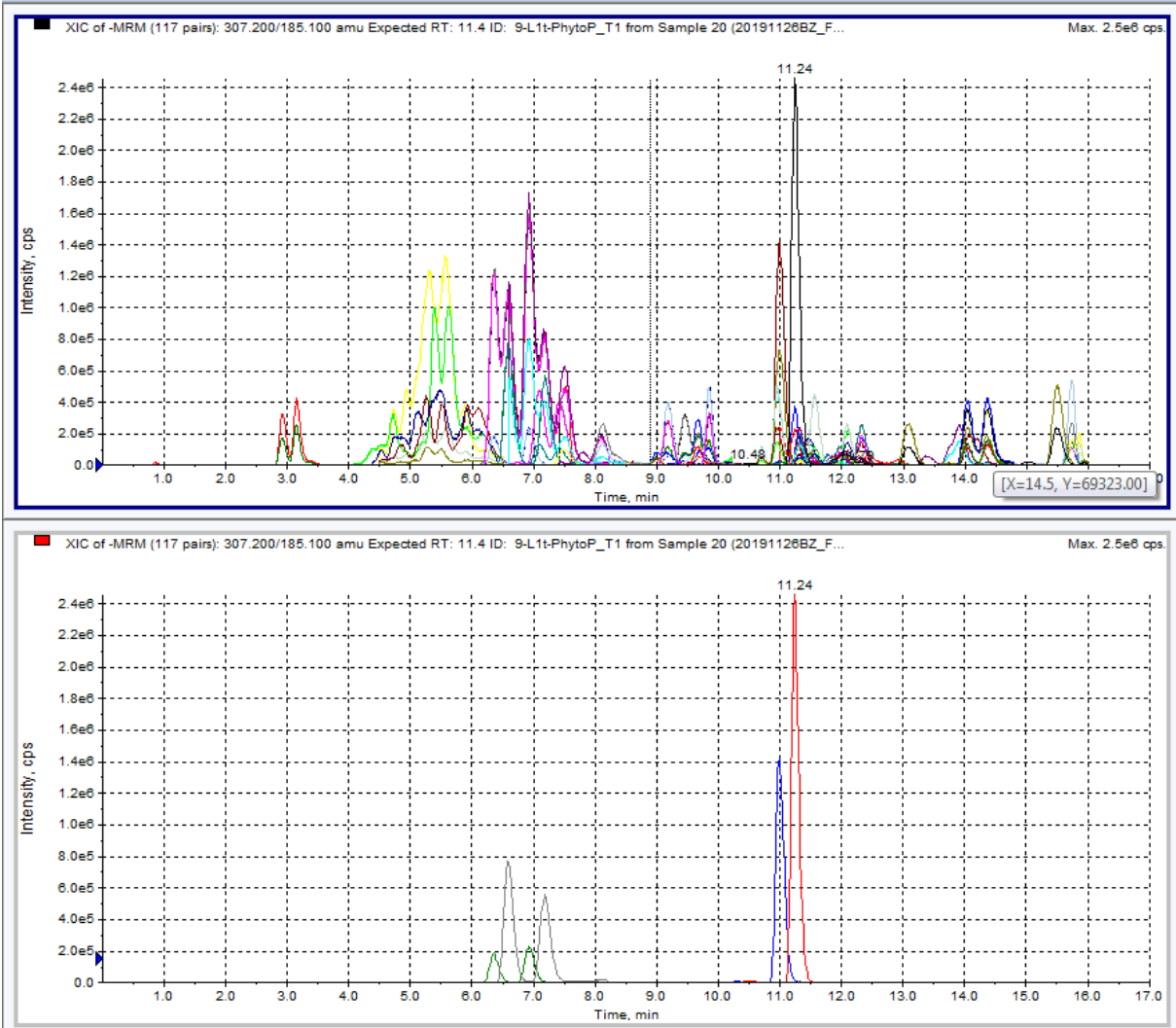
*ent-16-B<sub>1</sub>-PhytoP (A)*



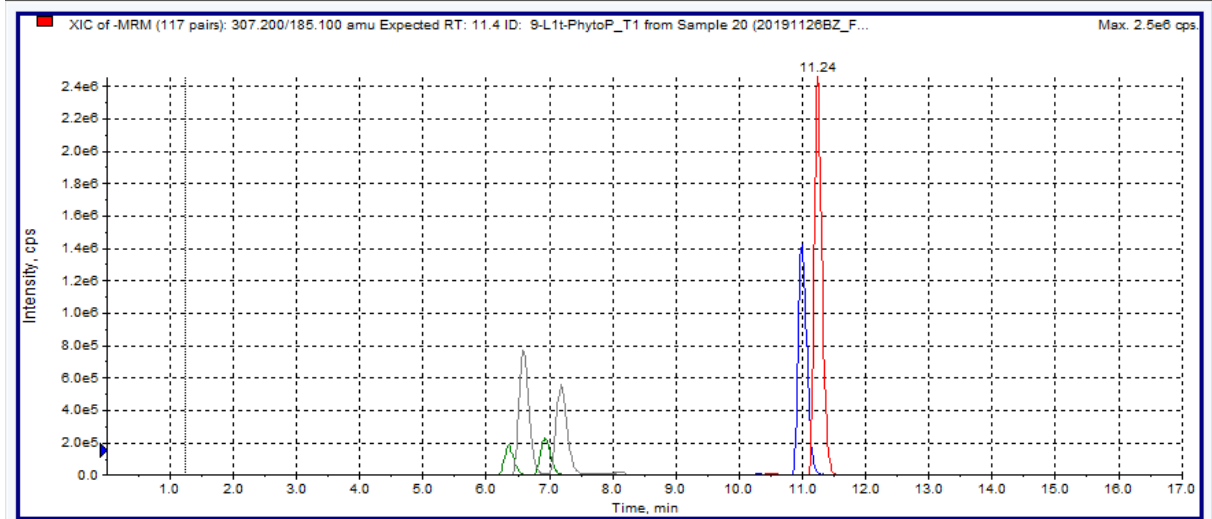
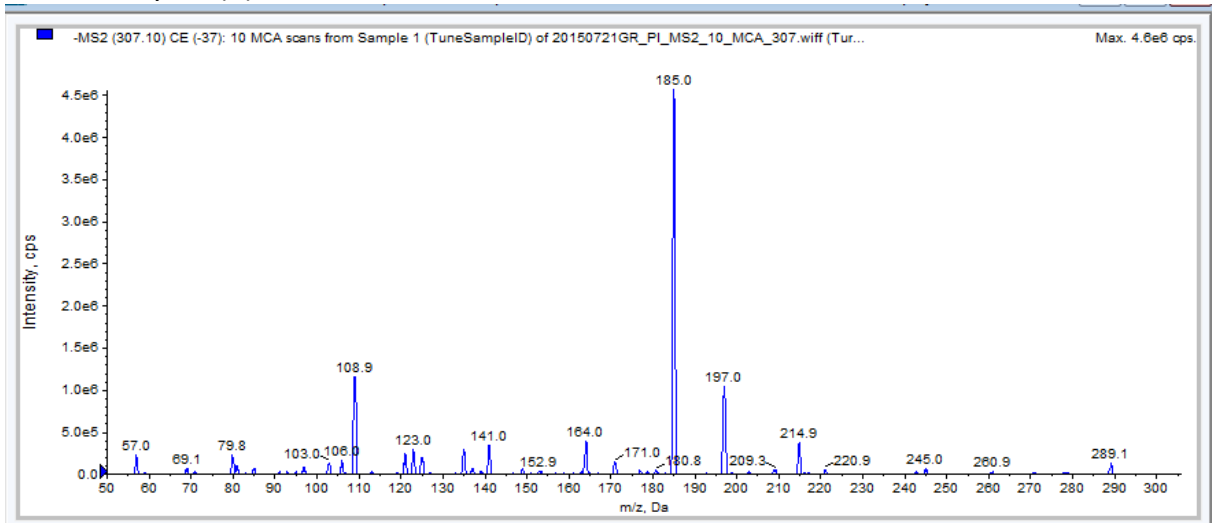
*ent*-16-B<sub>1</sub>-PhytoP (B)



*ent*-9-*L*<sub>1</sub>-PhytoP (A)



*ent*-9-L<sub>1</sub>-PhytoP (B)



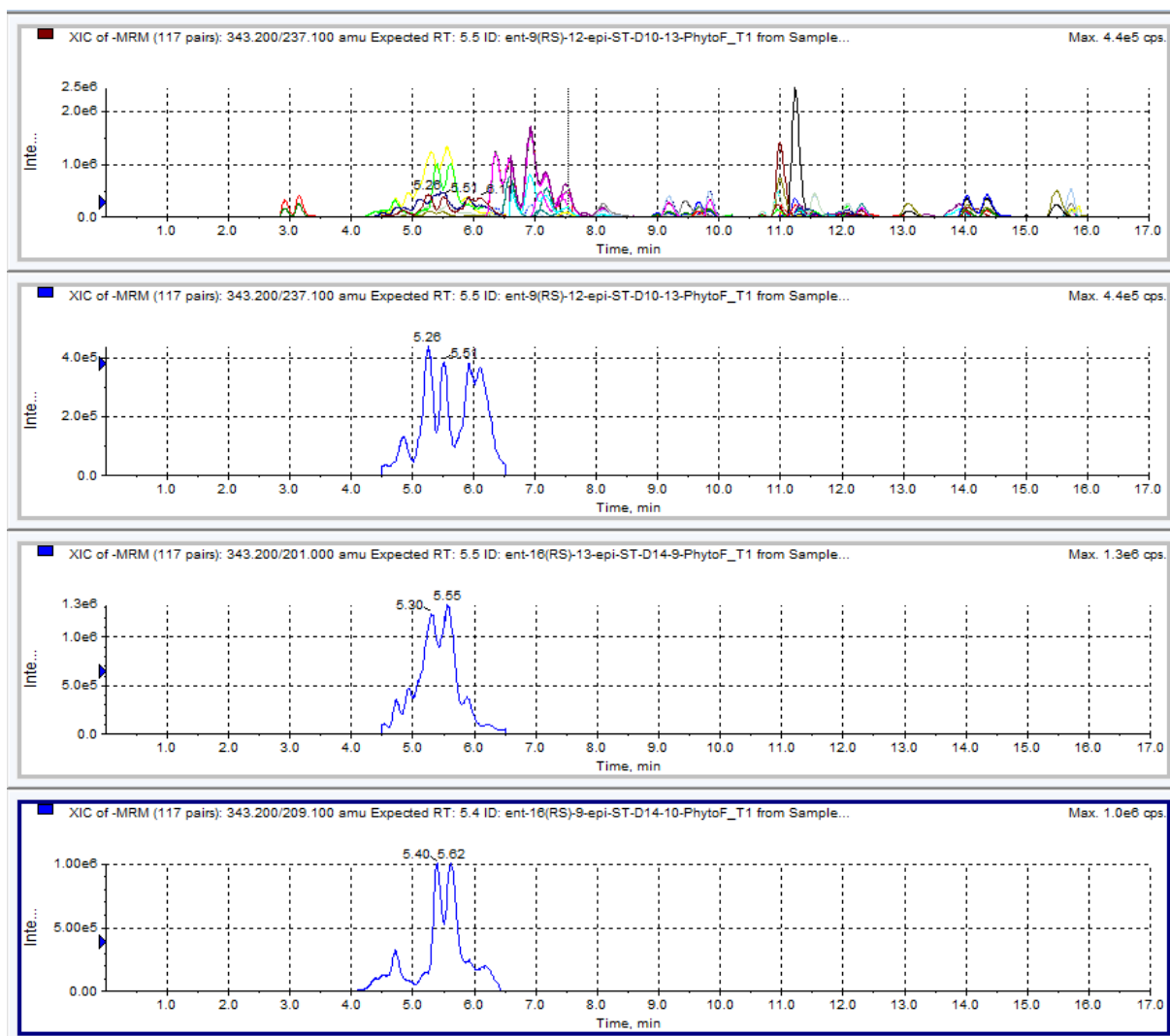


## 2. Phytofuranes data (chromatographic profile from detected LC-MS(/MS) features)

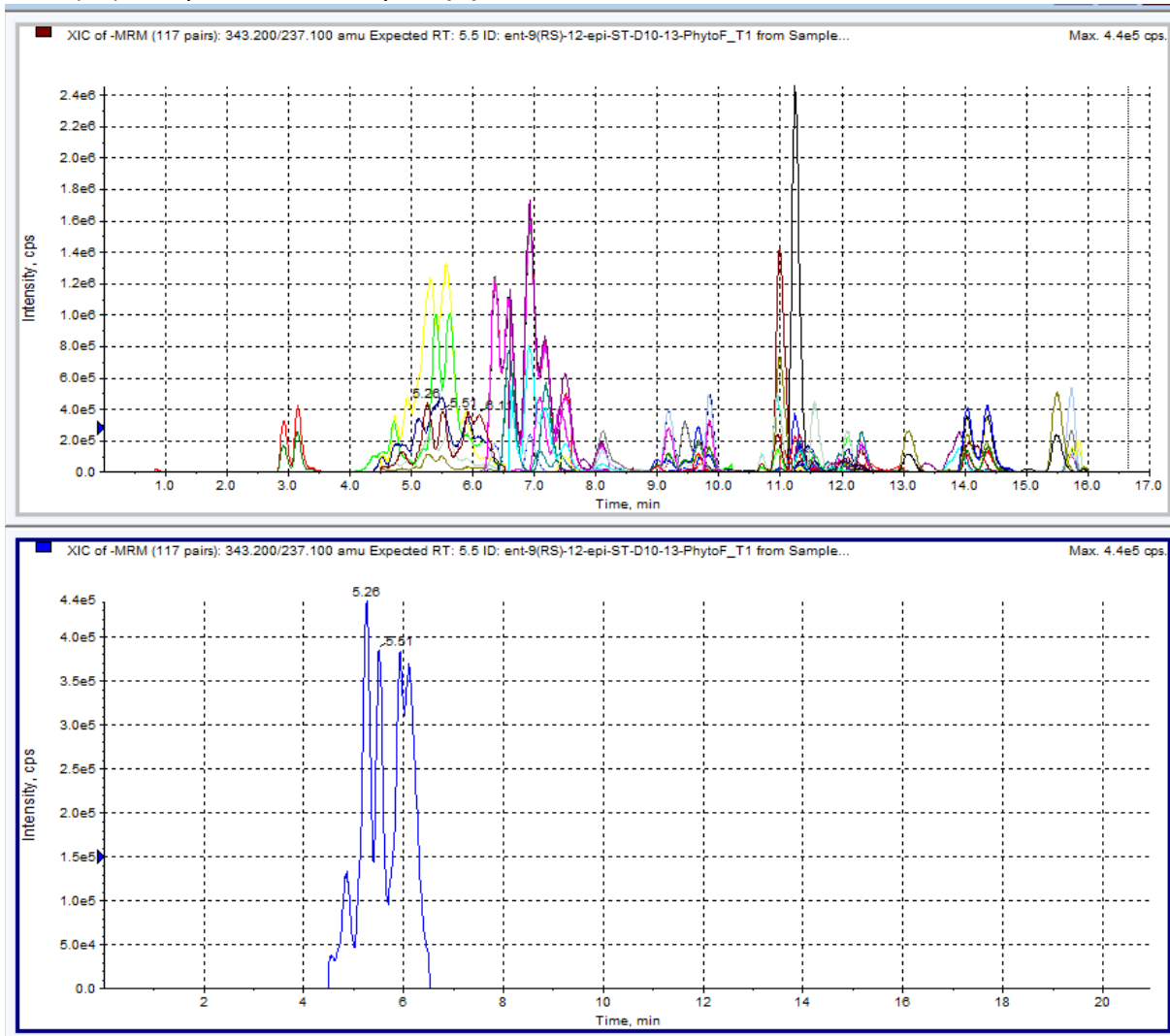
For each compound:

A- Example of electrospray ionization (ESI) extract ion chromatogram (XIC) of selected MRM

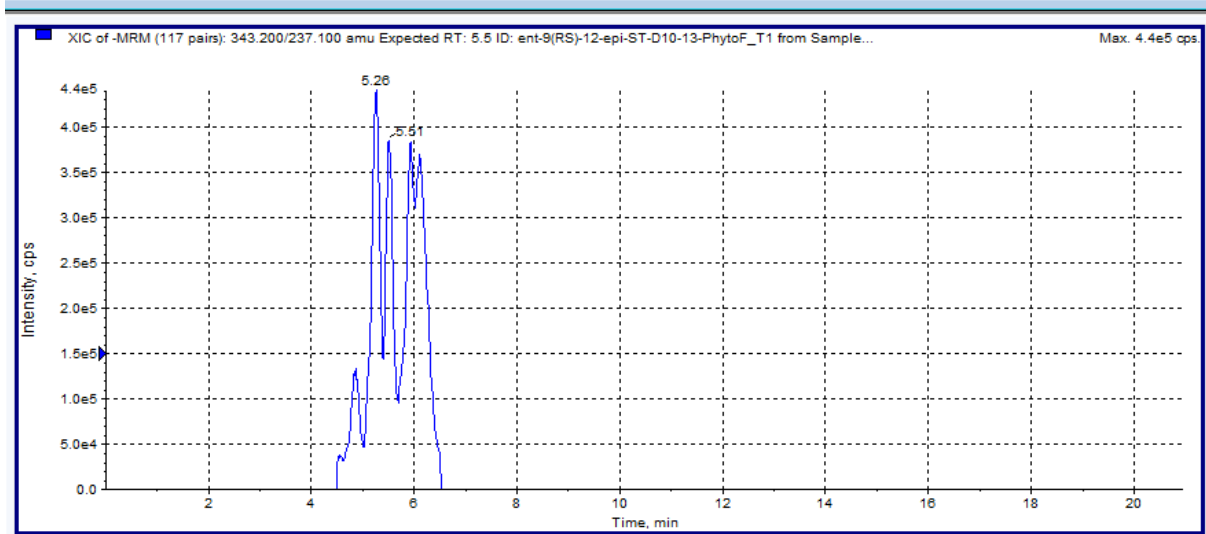
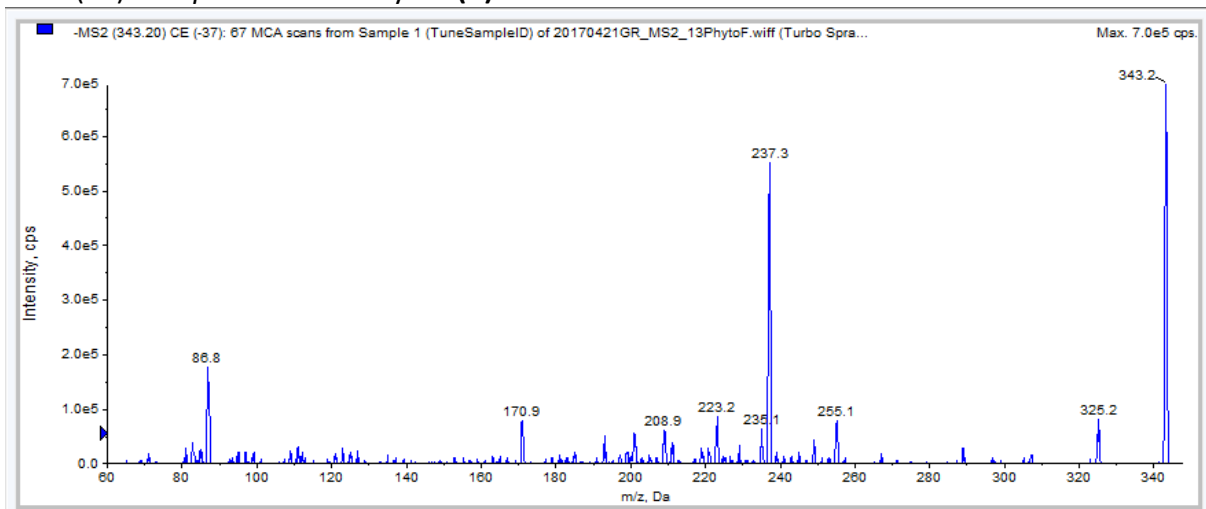
B- MS/MS spectrum



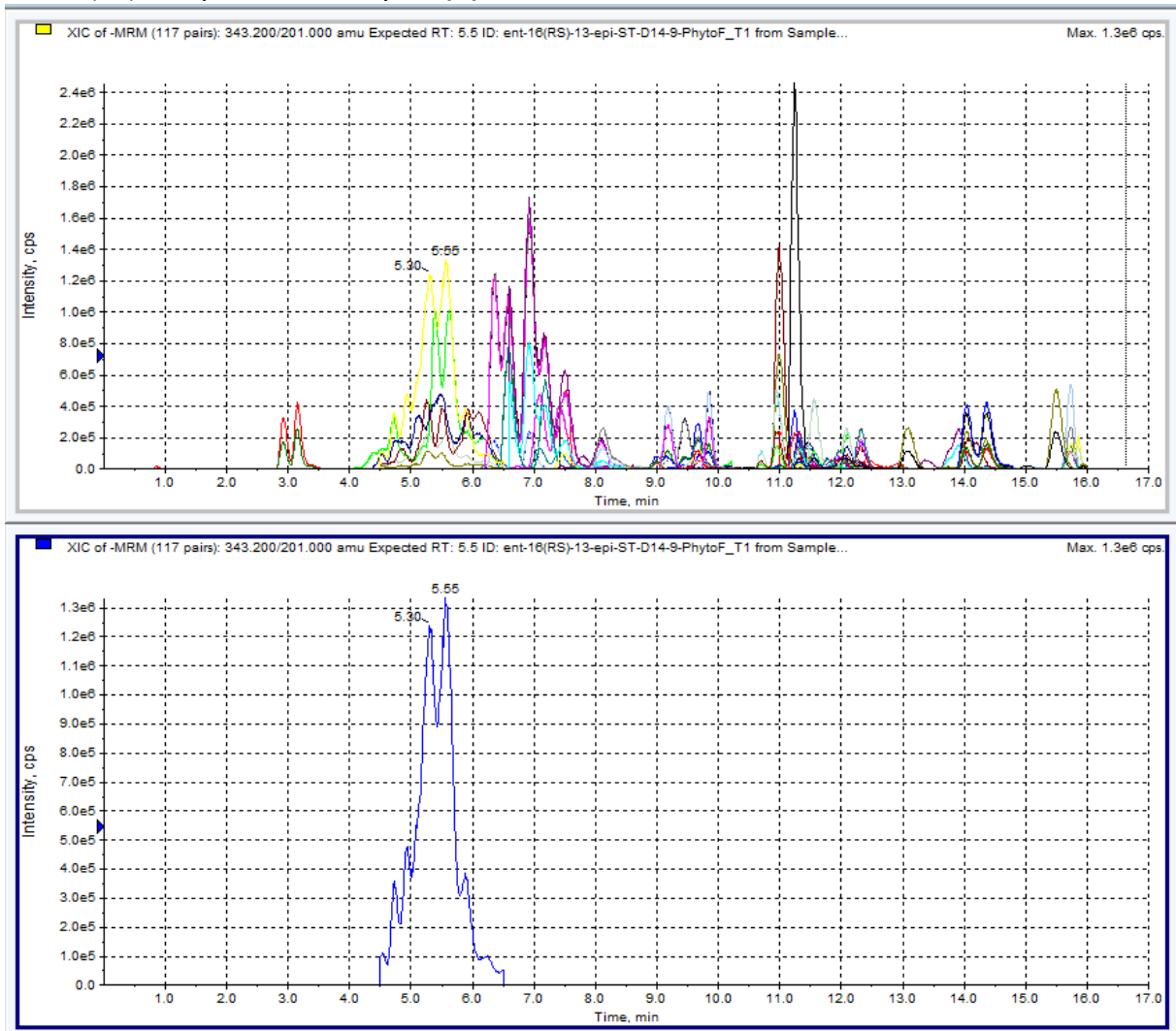
*ent-9(RS)-12-epi-ST- $\Delta^{10}$ -13-PhytoF (A)*



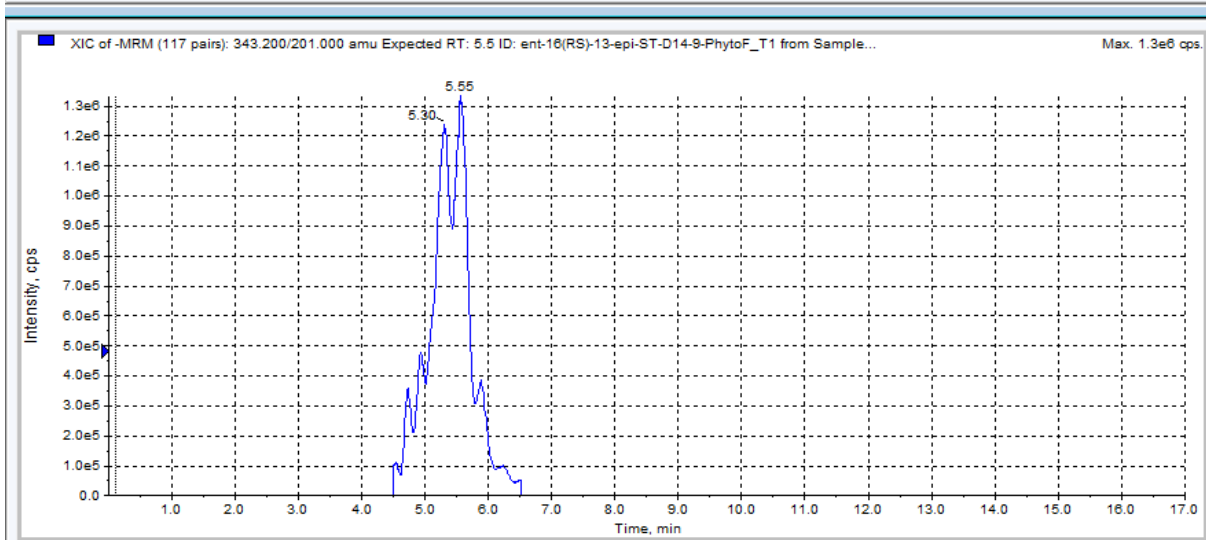
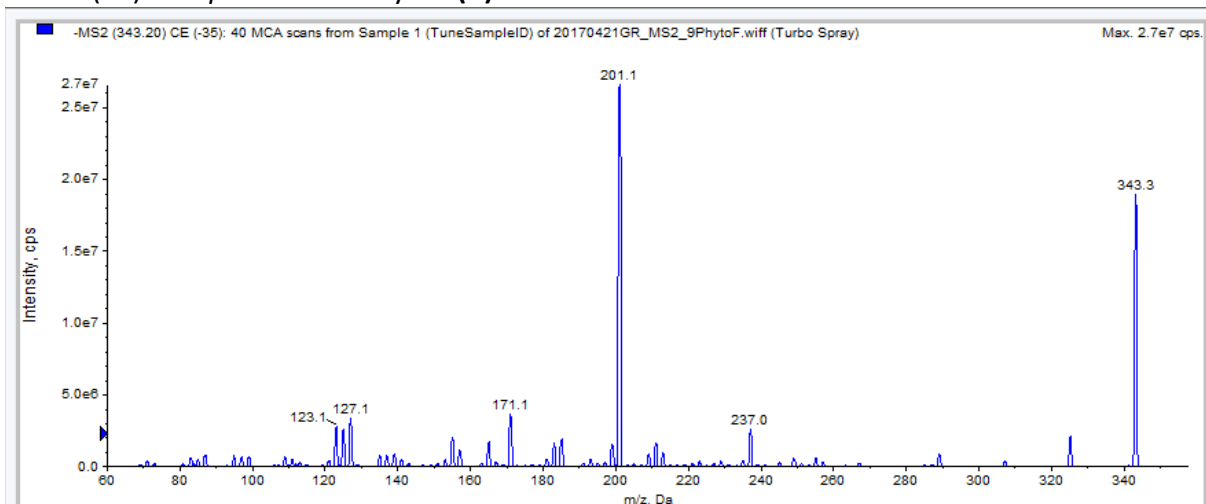
*ent-9(RS)-12-epi-ST- $\Delta^{10}$ -13-PhytoF (B)*



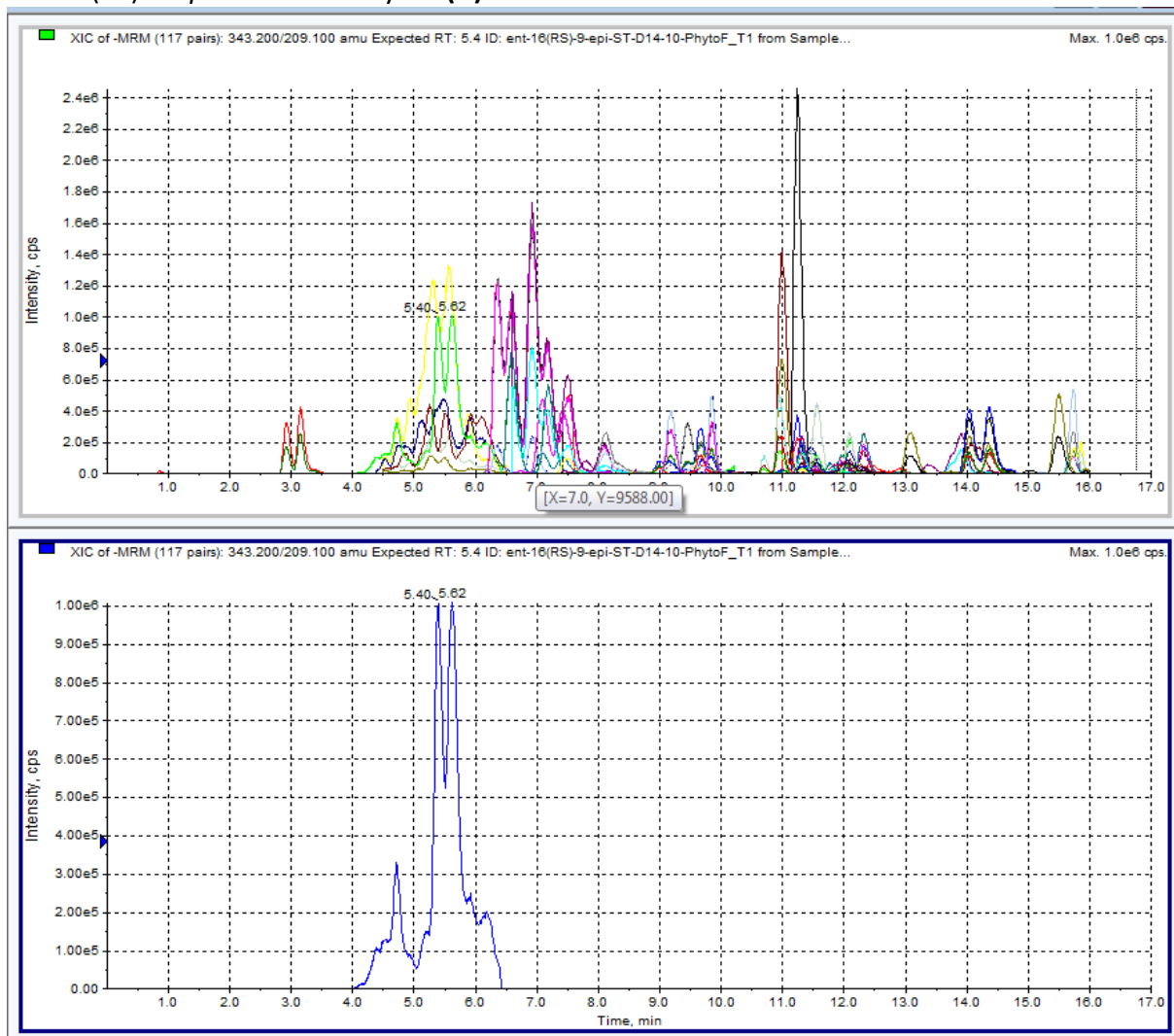
*ent-16(RS)-13-epi-ST- $\Delta^{14}$ -9-PhytoF (A)*



*ent-16(RS)-13-epi-ST- $\Delta^{14}$ -9-PhytoF (B)*



*ent-16(RS)-9-epi-ST- $\Delta^{14}$ -10-PhytoF (A)*



*ent-16(RS)-9-epi-ST- $\Delta^{14}$ -10-PhytoF (B)*

