



**HAL**  
open science

## Phosphatidylserine transport in cell life and death

Alenka Čopič, Thibaud Dieudonné, Guillaume Lenoir

► **To cite this version:**

Alenka Čopič, Thibaud Dieudonné, Guillaume Lenoir. Phosphatidylserine transport in cell life and death. *Current Opinion in Cell Biology*, 2023, Special Issue on Membrane Trafficking, 83, pp.102192. 10.1016/j.ceb.2023.102192 . hal-04275033

**HAL Id: hal-04275033**

**<https://hal.science/hal-04275033>**

Submitted on 8 Nov 2023

**HAL** is a multi-disciplinary open access archive for the deposit and dissemination of scientific research documents, whether they are published or not. The documents may come from teaching and research institutions in France or abroad, or from public or private research centers.

L'archive ouverte pluridisciplinaire **HAL**, est destinée au dépôt et à la diffusion de documents scientifiques de niveau recherche, publiés ou non, émanant des établissements d'enseignement et de recherche français ou étrangers, des laboratoires publics ou privés.

**Current Opinion in Cell Biology, Vol. 83, Aug.2023: Special Issue on Membrane Trafficking**

Article 12092

Edited by Karin Reinisch and Aurélien Roux

## Phosphatidylserine transport in cell life and death

Alenka Čopič<sup>1\*</sup>, Thibaud Dieudonné<sup>2</sup>, Guillaume Lenoir<sup>2</sup>

<sup>1</sup>Centre de Recherche en Biologie Cellulaire de Montpellier (CRBM), Université de Montpellier, CNRS, 34293 Montpellier CEDEX 05, France

<sup>2</sup>Université Paris-Saclay, CEA, CNRS, Institute for Integrative Biology of the Cell, 91198 Gif-sur-Yvette, France

\*Correspondence: alenka.copic@crbm.cnrs.fr

### Abstract

Phosphatidylserine (PS) is a negatively-charged glycerophospholipid found mainly in the plasma membrane (PM) and in the late secretory/endocytic compartments, where it regulates cellular activity and can mediate apoptosis. Export of PS from the endoplasmic reticulum, its site of synthesis, to other compartments, and its transbilayer asymmetry must therefore be precisely regulated. We review recent findings on non-vesicular transport of PS by lipid transfer proteins (LTPs) at membrane contact sites, on PS flip-flop between membrane leaflets by flippases and scramblases, and on PS nano-clustering at the PM. We also discuss emerging data on cooperation between scramblases and LTPs, how perturbation of PS distribution can lead to disease, and the specific role of PS in viral infection.

**Keywords:** Phosphatidylserine, Lipid transfer protein, Flippase, Scramblase, Lipid nanodomain, Membrane Asymmetry, Viral Infection

### Introduction

Phosphatidylserine (PS) is a negatively-charged phospholipid with a highly uneven distribution in cellular membranes, which is important for cellular function [1-3]. It is also used as a signal for engulfment of apoptotic cells by macrophages, and is exploited by pathogens for cell entry and propagation [4]. First, although PS is synthesized at the endoplasmic reticulum (ER), it is enriched in the plasma membrane (PM) and in late secretory/endocytic compartments. Second, an even steeper gradient exists between the two leaflets of the PM, as well as the *trans*-Golgi network (TGN) and endosomes, where PS is confined to the cytosolic side. Third, at the PM and possibly also in other compartments, PS has been shown to laterally segregate into nanodomains. Such uneven distribution necessitates mechanisms of selective PS transport and/or retention and depletion from specific membrane compartments. Here, we highlight some recent advances in our

understanding of the function of LTPs, which can mediate PS transport between compartments, and of lipid flippases and scramblases, which mediate its flip-flop between membrane leaflets. We specifically focus on the selectivity of these proteins for PS, and how the selectivity can be increased by other processes.

### **PS transport between cellular compartments**

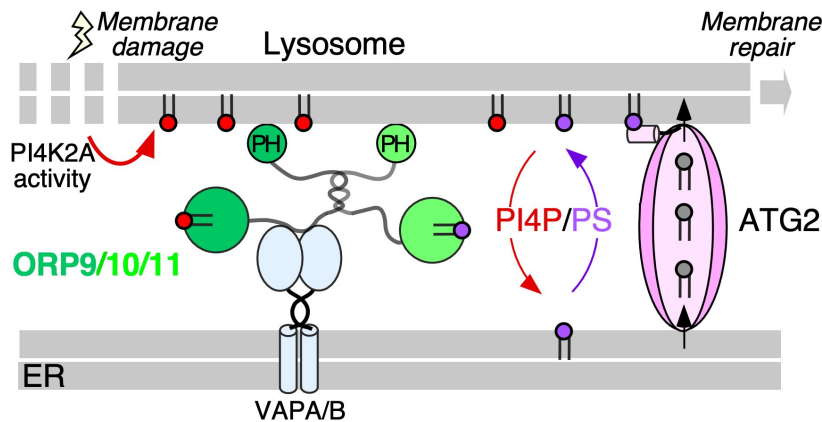
Like most other phospholipids, PS is synthesized at the ER, where its synthesis is under feedback inhibition [3]. LTPs, functioning within membrane contact sites, can extract PS from the cytosolic leaflet of the ER to transport it to other compartments [5,6]. Alternatively, PS can exit the ER following bulk membrane flow via COPII-coated membrane carriers.

In contrast to vesicular transport, it is well established that some LTPs can transport PS in a highly selective manner. This was first shown for two homologous yeast proteins from the Osh/ORP family, Osh6 and Osh7, which localize to the ER-PM contact sites, and later for their orthologues ORP5 and ORP8 in mammalian cells [7,8]. These proteins, which are related via their lipid-binding ORD domain, exchange PS with phosphatidylinositol-4-phosphate (PI4P). PI4P is continuously generated at the PM and dephosphorylated back to phosphatidylinositol at the ER, thus fueling the transport of PS against its concentration gradient [8,9]. *In vitro*, Osh6 and ORP8 show preference for unsaturated PS species [10], suggesting that they may contribute to divergent acyl chain composition of different cellular compartments.

Three other members of the ORP family, ORP9, ORP10 and ORP11, which are most closely related to ORP5/8, localized to the ER-TGN contact sites and influenced PS levels at the TGN [11]. Two recent studies further show that they mediate PS-PI4P exchange between the ER and the endocytic compartments to support downstream processes, either fission of recycling endosomes [12], or lysosomal repair [\*\*13]. The lysosomal repair pathway is triggered by accumulation of PI4P in response to lysosome damage, followed by recruitment ORP9/10/11 and an increase in PS on the lysosomal membrane, which in turn leads to the recruitment of another LTP, ATG2A (Figure 1). ATG2A belongs to the Vps13-related family of large channel-like LTPs [14], which can transport phospholipids in a very efficient but non-selective manner; the activity of ATG2A could therefore enable rapid sealing of the damaged lysosomes [\*\*13]. Cholesterol, supplied by the ORP family members OSBP and ORP1L, is also required for lysosomal repair [13,15]; the details of this process remain to be explored.

In yeast, Osh6/7 are the only known LTPs with a clearly demonstrated preference and role in PS transport; however, in cells lacking Osh6/7, enrichment of PS at the PM is still observed at steady state, suggesting additional mechanisms. Tricalbins, members of the extended synaptotagmin LTP family that localize to the ER-PM contacts, maintain PS levels at the PM under heat stress conditions [16]; the underlying mechanisms remain to be explored. Enrichment of PS in a target membrane can also be achieved by coupling a non-specific lipid transport pathway with specific retention of PS in the target membrane, for example by virtue of its association with other lipids or proteins, as discussed in the final chapter. At the donor site, lipid export can be promoted by lipid synthesis [17], but direct evidence for a positive feedback between the two processes is currently lacking. Opposite to this, the existence of a PS sink in the target compartment, *i.e.*, a mechanism to deplete PS upon delivery, can create a downward gradient to promote PS flow. This may be important for PS transport to mitochondria, where PS is converted to phosphatidylethanolamine (PE) via decarboxylation, following transfer by a specific intra-mitochondrial LTP complex to the

inner mitochondrial membrane [5,18,19]. In yeast, a second PS-decarboxylase, Psd2, localizes to endosomes and functions downstream of Osh6/7 [20]; it may therefore represent a mechanism to regulate PS levels at the PM via endocytosis.



**Figure 1. Partnership of LTPs during lysosomal membrane repair.** Lysosome membrane damage induces the production of PI4P by the PI4-kinase PI4K2A. PI4P accumulation promotes the formation of ER-lysosome membrane contacts through recruitment of ORP9, which binds to VAP proteins in the ER membrane. ORP10 and ORP11 are also recruited to this contact site likely via formation of hetero-dimers with ORP9, because they don't display a strong affinity for VAP proteins. These ORPs mediate the exchange of PI4P with PS and thereby accumulation of PS at the lysosomal membrane, which in turn promotes the binding of ATG2 via an amphipathic helix. High phospholipid transfer activity of ATG2 enables repair of the lysosomal membrane, likely in collaboration with LTPs that transport cholesterol (not shown) [11-13,15].

By what route PS reaches the mitochondria has been the subject of intense investigations; non-selective glycerophospholipid transporters, such as Vps13 and the ERMES complex, play an important role [21]. PS-specific LTPs have also been observed at the ER-mitochondria contact sites; in particular, ORP5/8 are enriched in these contacts and affect transport of PS in cells [22]. Mitochondria lack PI4P, therefore there can be no counter-exchange of PI4P in this case, consistent with the down-hill flow of PS. Interestingly, the Drin group has observed that the acyl-chain specificity of the ORP8-ORD- or Osh6-mediated PS transfer *in vitro* changes depending on the presence of PI4P in acceptor membranes, suggesting the possibility of sorting of PS species between the PM and the mitochondria [10]. In yeast cells, PS transport to mitochondria also displays selectivity at the level of acyl chains, with a preference for shorter and more unsaturated PS species [23].

ORP5 and ORP8 have also been detected in contact sites between the ER and the lipid droplets (LDs) that are closely associated with mitochondria, and LDs are affected by ORP5/8 depletion [24]. However, how these phenotypes relate to the PS transport activity of ORP5/8 is not clear. Another recently-identified LTP, mitoguardin-2, also localizes to these tri-partite ER-LD-mitochondria contact sites and was initially shown to have some specificity for PS, but a concomitant study instead suggests a lack of selectivity between different glycerophospholipids [25,26].

## Transbilayer transport of PS

A very steep PS gradient exists between the two leaflets of the PM, the TGN or the endosomes [27,28], suggesting tight regulation. At the PM, all glycerophospholipids except phosphatidylcholine (PC) are almost exclusively localized to the inner leaflet, whereas the outer leaflet is enriched in PC and sphingolipids. Phospholipid flippases (P4-ATPases in eukaryotic cells) are active transporters that pump lipids towards the cytosolic leaflet of cell membranes. P4-ATPases form heteromeric complexes with members the Cdc50 protein family, which are required for proper localization of the complex (Figure 2). In various instances, such as during blood coagulation or apoptosis, PS must be rapidly flipped to the cell surface, where it serves as a scaffold for blood-clotting enzymes or as an ‘eat me’ signal for clearance by macrophages, a process catalyzed by lipid scramblases [4]. Changes in PS transbilayer distribution are also exploited by various intracellular pathogens (Box 1).

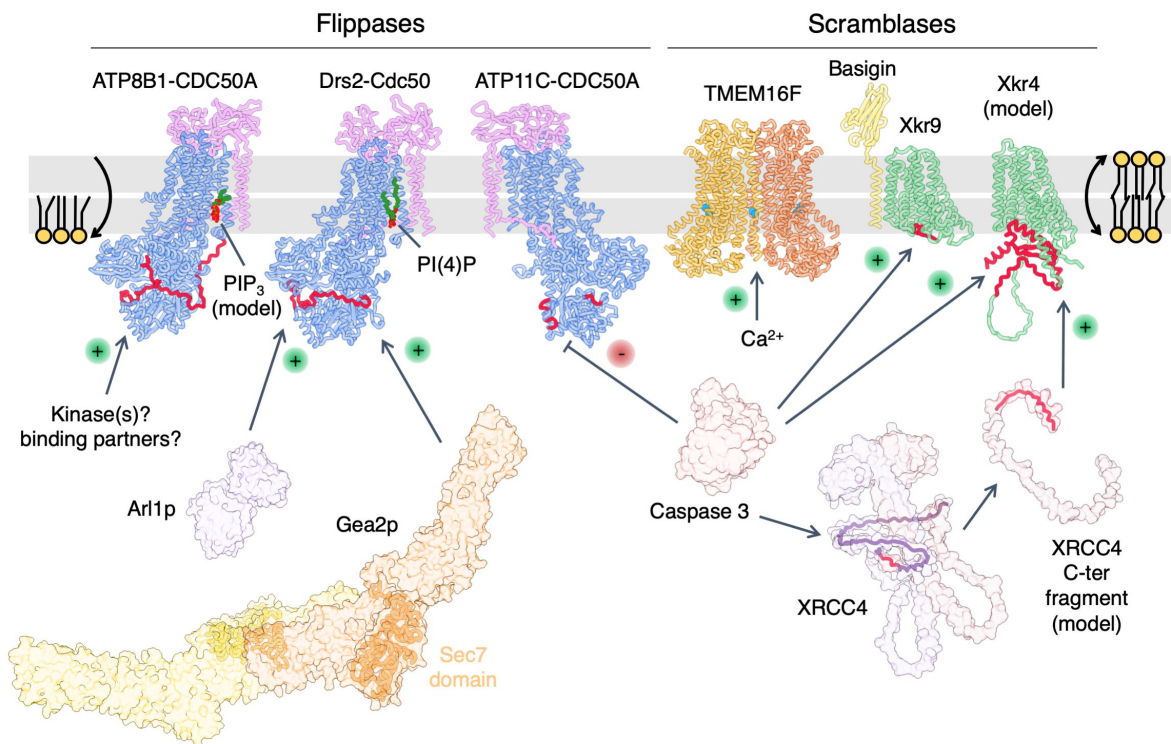
### **Box 1. Emerging roles of scramblases, flippases and PS distribution in infectious diseases**

Several lines of evidence point to a crucial role of PS transbilayer distribution in host-pathogen interactions. The ATP2B/CDC50.4 lipid flippase complex, which has been shown to transport PS, is required for the lytic cycle of *Toxoplasma gondii* [68]. In the host cell, the scramblases VMP1 and TMEM41B play a role in the formation of double membrane vesicles (DMV) upon infection by  $\beta$ -coronavirus. This function is dependent on the ability of cells to regulate PS distribution, as depletion of the PS synthase PTSS1 rescues the DMV defects in VMP1 knock-out cells [69]. Furthermore, analysis of pneumocytes from COVID-19 patients revealed the presence of multinucleated cells called syncytia, and screening for drugs that block SARS-CoV-2 infection yielded molecules targeting TMEM16F. Inhibition of TMEM16F reduced externalization of PS in cells treated with the  $\text{Ca}^{2+}$  ionophore ionomycin and downregulation of TMEM16F blunted syncytia formation in spike protein-expressing cells [70]. These results are consistent with a role of PS in cell fusion events, and are supported by a study showing that compounds inhibiting TMEM16F-mediated PS externalization have antiviral effects [71]. Genetic screens also identified TMEM41B and CDC50A as crucial host factors for infection by human coronaviruses, including SARS-CoV-2 [72]. Furthermore, co-expression of Ebola virus matrix protein VP40 (eVP40) and glycoprotein GP in cells yielded virus-like particles (VLPs) with PS exposed at the surface as a result of incorporation of Xkr8 in VLPs, which increased the uptake of VLPs by target cells in a process known as apoptotic mimicry [73]. Expression of eVP40 was shown to enhance PS clustering at the PM of living cells, which in turn promoted eVP40 membrane binding and oligomerization. Consistently, fendiline, a recently FDA-approved drug that reduces PS levels and clustering at the PM, decreased eVP40 oligomerization and VLP production from infected cells [74].

In contrast to early reports suggesting that flippases were PS/PE transporters, only a subset of P4-ATPases actually transports PS, among which mammalian ATP11A, ATP11C, ATP8A1, ATP8A2 and ATP8B1, as well as Drs2 in yeast [29]. Erythrocytes of ATP11C-deficient mice display elevated PS at the cell surface, abnormal shape and reduced lifetime [30]. Mutations in human ATP8A2 that disrupt PS-activated ATPase activity have been reported to cause severe neurological disorders [31]. Interestingly, recent work indicates that elevated PS levels at synapses promote synaptic pruning, i.e., removal of synapses to establish proper connections during brain development, and points to a prominent role of the P4-ATPase chaperone CDC50A in mediating PS exposure and subsequent aberrant synapse removal *in vivo* [32,33]. Similarly, the expression of the lipid scramblase Xkr8 has been shown to be dynamically regulated in the developing brain and to contribute to axonal pruning [34]. Intriguingly, the brain-specific G protein-coupled cell

adhesion receptor BAI1, originally described to bind PS exposed on apoptotic cells for engulfment by macrophages, is also enriched in the post-synaptic density, where it interacts with ATP11A. The lipid flippase activity of ATP11A reduces the signaling activity of BAI1 in a manner dependent on the extracellular PS-binding motif of BAI1, suggesting a complex mechanism of PS sensing, whether BAI1 is located on microglia/astrocytes or on neurons [\*35].

Recent structural investigations have allowed detailed understanding of P4-ATPase-catalyzed PS transport across cell membranes and disclosed the regulatory mechanisms at play [36-39]. ATP8A1, ATP8B1 and the yeast Drs2 are autoinhibited by their C- and N-terminal extensions. For human ATP8B1, phosphorylation of a serine in the C-terminus may control the dissociation of the inhibitory tail [39]. Furthermore, phosphoinositides have been identified as critical activators of Drs2 and ATP8B1 via an unknown molecular mechanism (Figure 2) [36,39,40].



**Figure 2. Regulatory mechanisms underpinning flippase- and scramblase-mediated phospholipid transport.** Flippases are exemplified by the human ATP8B1-CD50A (7PY4), yeast Drs2-Cdc50 (6ROJ) and human ATP11C-CDC50A (6LKN) complexes, with the P4-ATPase subunit shown in light blue and Cdc50 proteins in pink. Scramblases are exemplified by human TMEM16F (6QP6), the human Xkr8-Basigin complex (7DCE) and a model of Xkr4 generated with AlphaFold2. Autoinhibition in ATP8B1-CDC50A and Drs2-Cdc50 complexes is achieved through binding of their C- and N-terminal extensions (in red) at the interface between the catalytic ATPase domains, thereby preventing conformational changes required for lipid transport. The mechanism by which autoinhibition is relieved is still unclear, but the N- and C-terminal tails of Drs2 contain binding sites for the small GTP-binding protein Arl1 (1MOZ) and the Sec7 domain (1KU1) of the large Arf-GEF Gea2 (7UTH), respectively. The regulatory phosphoinositides, PI(3,4,5)P, and PI4P, are displayed in the structures of ATP8B1 and Drs2, respectively. The TMEM16F dimer (yellow/orange), is shown in a Ca<sup>2+</sup>-bound conformation (Ca<sup>2+</sup> spheres in blue). Ca<sup>2+</sup> binding stimulates lipid transport by TMEM16F. The Xkr8 scramblase is shown in green, with its associated subunit Basigin in yellow. Upon activation of caspase 3 (3GJS), Xkr8-mediated PS exposure at the cell surface is activated

*through cleavage of a C-terminal peptide (in red), which is concurrent with inhibition of ATP11C-mediated inward movement of PS through cleavage of its large cytosolic loop (in red) by caspase 3. Xkr4-mediated PS exposure requires both direct cleavage by caspase 3, which removes a large C-terminal domain (in red) and additional activation through binding of a C-terminal fragment of the nuclear protein XRCC4 (in purple), released upon cleavage by caspase 3 (cleavage site in red). The portion of the XRCC4 C-terminal fragment that binds Xkr4 is colored red.*

Exposure of PS on the cell surface may also result from scramblase activation. TMEM16F and several other TMEM16 family members function as  $\text{Ca}^{2+}$ -dependent lipid scramblases and are responsible for exposing PS in activated platelets, whereas Xkr family members Xkr9, 8 and 4 have been found to stimulate PS scrambling under apoptotic conditions [41]. TMEM16 proteins function as homodimers. Each protomer contains a hydrophilic pathway that would shield lipid headgroups, the access to which is controlled by  $\text{Ca}^{2+}$  binding to a site buried in the hydrophobic core of the membrane (Figure 2). Transport of lipids through the membrane may be facilitated by the ability of certain TMEM16 proteins to distort the membrane bilayer, thereby lowering the energy barrier for lipid flip-flop [42].

Recent studies revealed the architecture of Xkr proteins Xkr8 and Xkr9 [\*43,\*44]. Whereas Xkr8 interacts with basigin, a type I membrane protein, no evidence for such interaction was shown for Xkr9 (Figure 2). The activity of Xkr proteins is tightly regulated by apoptotic signals. Both Xkr8 and 9 are positively regulated by caspase-mediated cleavage of their C-terminal region. In addition, caspases act as inhibitors of lipid transport by cleaving the P4-ATPase ATP11C (Figure 2). Recently, Maruoka and colleagues uncovered an elaborate regulatory mechanism for Xkr4, whereby a caspase-cleaved fragment of XRCC4, a nuclear protein involved in DNA repair, acts as an activating factor of caspase-cleaved Xkr4 [\*\*45].

Interestingly, a constitutively active *Drosophila* homolog of Xkr8 promotes high elasticity and low tension of insect cell membranes, indicating that transbilayer lipid dynamics controls membrane deformability. Scramblase-catalyzed lipid flip-flop may also regulate membrane deformation in mammalian cells [\*46]. Another recent study suggests that dynamic PS flip-flop may occur during cell migration [47]. A higher cytosolic surface charge was observed in PM protrusions at the front of migrating cells compared to the back, which correlated with a transient increase in PS in the outer PM leaflet; the molecular mechanism of this flip-flop remains to be explored.

### **Partnership between lipid scramblases and LTPs**

Apart from TMEM16 and Xkr proteins, other proteins have been shown to facilitate phospholipid scrambling, including the ER-resident proteins TMEM41B and VMP1, which regulate LD and lipoprotein biogenesis, and the ATG9A autophagy protein present in Golgi-derived vesicles [48-50]. Partnership between these scramblases and the channel-like LTP ATG2A, which connects the ER and the autophagosomal membrane and interacts with TMEM41B, VMP1 and ATG9A, has been proposed to be important for generating new membrane [\*\*48]. It is not known what powers the transport of phospholipids towards the expanding membrane, for example during autophagosome formation; an enticing candidate is lipid synthesis at the ER [51].

There is no evidence for PS specificity in these pathways. However, depletion of TMEM41B and VMP1 results in a slight change in PS distribution [50], and a recent study suggests that PS

enrichment occurs during maturation of the yeast autophagosomal membrane [52]. The importance of PS in non-canonical autophagy has been recently shown by Durgan and co-workers, who have found that ATG8 can be conjugated to PS instead of PE thanks to a switch in the lipid specificity of the conjugating enzyme [53].

A functional partnership relevant for PS distribution is illustrated by the interaction between the yeast ER-embedded TMEM16 protein Ist2, which tethers the ER and the PM, and Osh6. Upon deletion of Ist2, cellular PS levels decrease, probably due to inhibition of the PS synthase Cho1 by its own product [54]. Moreover, functional partnership may arise in the context of endosome fission, where both ORP10 and ATP8A1 contribute to PS enrichment in the cytosolic leaflet of endosomes, which facilitates recruitment of the fission protein EHD1 [12].

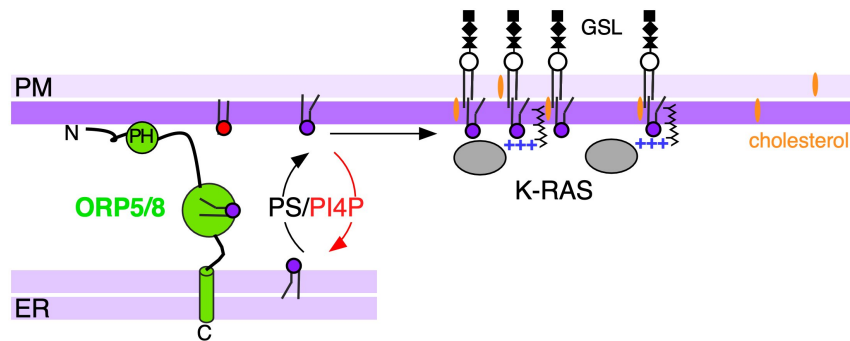
Similar partnership between scramblases and lipid-transfer proteins has been shown in the context of inflammation, where high extracellular ATP concentration induces PS exposure at the surface of T lymphocytes. The missing link between elevated ATP and PS exposure has now been unraveled: a complex formed by Xk and the LTP VPS13A at ER-PM contact sites was shown to be essential for P2X7-mediated PS exposure [55,56].

### **PS nanodomains at the PM**

PS can also laterally segregate in membranes. It is proposed that enrichment of PS at membrane contact sites is important for its export from the ER [7,57], but this has not been directly demonstrated. The distribution of PS at the PM can be more directly assessed, and the importance of dynamic clustering of PS into nanodomains for signaling at the PM is well established. The small GTPase K-RAS, which regulates cell proliferation through the mitogen-activated protein kinase pathway and is mutated in a large number of cancers, binds to the PM via a bi-partite C-terminal signal composed of a lysine patch and a highly branched farnesyl lipid anchor. K-RAS localization depends on the activity of the PS transfer proteins ORP5 and ORP8, and on the PI4-kinase that generates PI4P used in PS exchange [58] (Figure 3). At the PM, K-RAS forms dynamic nano-clusters, which are required for its signaling activity and are dependent on PS. K-RAS recognizes both the headgroup and specific acyl chain composition of PS, preferring mixed-chain PS species containing one saturated and one unsaturated acyl chain [59,60]. The PS acyl chain specificity is dependent on the precise chemistry of the K-RAS lipid anchor. PS can associate with sterols, likewise in an acyl-chain selective manner [61], and sterol distribution at the PM is affected by PS levels [16,62,63]. Glycosphingolipids, which reside in the outer PM leaflet, can also promote PS clustering and K-RAS signaling (Figure 3). This association specifically depends on the presence of long acyl chains in both lipids [64], in agreement with a previous observation that PS species with long acyl chains can promote trans-bilayer coupling of two membrane leaflets [65].

Together, K-RAS signaling is a good illustration of how the combination of small affinities can contribute to a strong preference for PS retention at the PM and promote its lateral nano-clustering (Figure 3). Another interesting example is the Rho-of-plants (ROP) GTPase ROP6, which contains a hyper-variable C-terminal tail similar to K-RAS. ROP6 forms nanoclusters at the PM in a PS-dependent manner, which are critical for hormone signaling and osmo-sensing in plant cells [66]. A recent study shows that the PM receptor kinase FERONIA (FER) also controls ROP6 nano-cluster dynamics and downstream signaling *via* controlling PS distribution and levels at the PM [67].





**Figure 3. Different mechanisms promote PS clustering in the cytosolic leaflet of the PM and K-RAS signaling.** PS (in purple) is delivered to the PM by the LTPs ORP5 and ORP8, which exchange it with PI4P (in red) that is produced locally by PI4-kinase. ORP8 has a preference for unsaturated PS [10]. K-RAS interacts with PS headgroup and acyl chains via its C-terminal localization signal, composed of a lysine patch and a branched lipid anchor. PS and K-RAS nano-clustering is also promoted by interactions with cholesterol, which depend on acyl chain unsaturation, and interactions with glycosphingolipids (GSL) in the outer PM leaflet, which depend on acyl chain length [58,60,64].

## Conclusion

Recent years have brought an exponential increase in studies of cellular lipid traffic and its implications for other cellular processes, as attested by the large number of very recent papers cited in this review (and others that we could not cite due to space constraints). However, understanding of lipid flow in the cell requires quantitative analysis at high (nanometer range) spatial as well as temporal resolution. This is far from an easy task, given the difficulty in labeling and tracking lipids, their molecular diversity, where seemingly small differences can have a large effect [60,61], and the diverse (often low affinity) molecular interactions that contribute to their behavior. It is in fact striking how much of our knowledge on intracellular distribution of PS and other lipids stems from careful biochemical and cell fractionation studies performed several decades ago, long before the explosion in lipidomics, high-resolution imaging techniques and the use of fluorescent probes in cells [27,57]. The latter techniques have brought many new insights, but also controversy (the continuing debate on the nature and functional importance of lipid rafts in cells being just one obvious example). The understanding of PS function and flow in the cell necessarily requires diverse approaches and revisits of old discoveries that may be perceived as incremental (or obvious), but are absolutely essential, given how fine-tuning of various lipid gradients and interactions, coupled with feedback loops, can lead to vastly different outcomes.

## Acknowledgments

We wish to thank Bruno Antony and Guillaume Drin for insightful discussions. This work was supported by the Agence Nationale de la Recherche Grant (ANR-20-CE13-0030-02), the CNRS, Université Paris-Saclay, and FRM (ARF202209015714) grant to T.D.

## Conflict of Interest

The authors declare no conflict of interest.

## References

Papers of particular interest, published within the period of review, have been highlighted as:

\* of special interest

\*\* of outstanding interest

1. Yeung T, Gilbert GE, Shi J, Silviu J, Kapus A, Grinstein S: **Membrane Phosphatidylserine Regulates Surface Charge and Protein Localization.** *Science* 2008, **319**:210–213.
2. Fairn GD, Hermansson M, Somerharju P, Grinstein S: **Phosphatidylserine is polarized and required for proper Cdc42 localization and for development of cell polarity.** *Nat Cell Biol* 2011, **13**:1424–1430.
3. Kimura AK, Kimura T: **Phosphatidylserine biosynthesis pathways in lipid homeostasis: Toward resolution of the pending central issue for decades.** *FASEB J* 2021, **35**:e21177.
4. Bevers EM, Williamson PL: **Getting to the Outer Leaflet: Physiology of Phosphatidylserine Exposure at the Plasma Membrane.** *Physiol Rev* 2016, **96**:605–645.
5. Wong LH, Gatta AT, Levine TP: **Lipid transfer proteins: the lipid commute via shuttles, bridges and tubes.** *Nat Rev Mol Cell Biol* 2019, **20**:85–101.
6. Drin G: **Creating and sensing asymmetric lipid distributions throughout the cell.** *Emerg Top Life Sci* 2023, **7**:7–19.
7. Maeda K, Anand K, Chiapparino A, Kumar A, Poletto M, Kaksonen M, Gavin A-C: **Interactome map uncovers phosphatidylserine transport by oxysterol-binding proteins.** *Nature* 2013, **501**:257–261.
8. Chung J, Torta F, Masai K, Lucast L, Czaplá H, Tanner LB, Narayanaswamy P, Wenk MR, Nakatsu F, De Camilli P: **INTRACELLULAR TRANSPORT. PI4P/phosphatidylserine countertransport at ORP5- and ORP8-mediated ER-plasma membrane contacts.** *Science* 2015, **349**:428–432.
9. Moser Von Filseck J, Copic A, Delfosse V, Vanni S, Jackson CL, Bourguet W, Drin G: **INTRACELLULAR TRANSPORT. Phosphatidylserine transport by ORP/Osh proteins is driven by phosphatidylinositol 4-phosphate.** *Science* 2015, **349**:432–436.
10. Ikhlef S, Lipp N-F, Delfosse V, Fuggetta N, Bourguet W, Magdeleine M, Drin G: **Functional analyses of phosphatidylserine/ PI(4)P exchangers with diverse lipid species and membrane contexts reveal unanticipated rules on lipid transfer.** *BMC Biol* 2021, **19**:248.
11. Venditti R, Rega LR, Masone MC, Santoro M, Polishchuk E, Sarnataro D, Paladino S, D'Auria S, Varriale A, Olkkonen VM, et al.: **Molecular determinants of ER–Golgi contacts identified through a new FRET–FLIM system.** *J Cell Biol* 2019, **218**:1055–1065.
12. Kawasaki A, Sakai A, Nakanishi H, Hasegawa J, Taguchi T, Sasaki J, Arai H, Sasaki T, Igarashi M, Nakatsu F: **PI4P/PS countertransport by ORP10 at ER-endosome membrane contact sites regulates endosome fission.** *J Cell Biol* 2022, **221**: e202103141.
- \*\*13. Tan JX, Finkel T: **A phosphoinositide signalling pathway mediates rapid lysosomal repair.** *Nature* 2022, **609**:815–821.  
A tour de force describing a novel role of the LTPs ORP9, ORP10, and ORP11 in promoting lysosomal repair via their PS-PI4P lipid exchange activity between the ER and the lysosomal membrane. The authors further propose that the downstream recruitment of ATG2 enables supply of phospholipids in bulk that is required to generate new membrane.
14. Melia TJ, Reinisch KM: **A possible role for VPS13-family proteins in bulk lipid transfer, membrane expansion and organelle biogenesis.** *J Cell Sci* 2022, **135**:jcs259357.
15. Radulovic M, Wenzel EM, Gilani S, Holland LK, Lystad AH, Phuyal S, Olkkonen VM, Brech A, Jäättelä M, Maeda K, et al.: **Cholesterol transfer via endoplasmic reticulum contacts mediates lysosome damage repair.** *EMBO J* 2022, **41**:e112677.
16. Thomas FB, Omnus DJ, Bader JM, Chung GH, Kono N, Stefan CJ: **Tricalbin proteins regulate plasma membrane phospholipid homeostasis.** *Life Sci Alliance* 2022, **5**:e202201430.
17. Balla T, Sengupta N, Kim YJ: **Lipid synthesis and transport are coupled to regulate membrane lipid dynamics in the endoplasmic reticulum.** *BBA - Mol Cell Biol Lipids* 2020, **1865**:158461.
18. Aaltonen MJ, Friedman JR, Osman C, Salin B, di Rago J-P, Nunnari J, Langer T, Tatsuta T: **MICOS and phospholipid transfer by Ups2-Mdm35 organize membrane lipid synthesis in mitochondria.** *J Cell Biol* 2016, **213**:525–534.
19. Sam PN, Calzada E, Acoba MG, Zhao T, Watanabe Y, Nejatfard A, Trinidad JC, Shutt TE, Neal SE, Claypool SM: **Impaired phosphatidylethanolamine metabolism activates a reversible stress response that detects and resolves mutant mitochondrial precursors.** *SCIENCE* 2021, **24**:102196.

20. Wong AKO, Young BP, Loewen CJR: **Ist2 recruits the lipid transporters Osh6/7 to ER-PM contacts to maintain phospholipid metabolism.** *J Cell Biol* 2021, **220**:e201910161.
21. John Peter AT, Petrunaro C, Peter M, Kornmann B: **METALIC reveals interorganelle lipid flux in live cells by enzymatic mass tagging.** *Nat Cell Biol* 2022, **24**:996–1004.
22. Monteiro-Cardoso VF, Rochin L, Arora A, Houcine A, Jääskeläinen E, Kivelä AM, Sauvanet C, Le Bars R, Marien E, Dehairs J, et al.: **ORP5/8 and MIB/MICOS link ER-mitochondria and intra-mitochondrial contacts for non-vesicular transport of phosphatidylserine.** *Cell Rep* 2022, **40**:111364.
23. Renne MF, Bao X, Hokken MW, Bierhuizen AS, Hermansson M, Sprenger RR, Ewing TA, Ma X, Cox RC, Brouwers JF, et al.: **Molecular species selectivity of lipid transport creates a mitochondrial sink for di-unsaturated phospholipids.** *EMBO J* 2022, **41**:e106837.
24. Guyard V, Monteiro-Cardoso VF, Omrane M, Sauvanet C, Houcine A, Boulogne C, Ben M'barek K, Vitale N, Faklaris O, Khallouki El N, et al.: **ORP5 and ORP8 orchestrate lipid droplet biogenesis and maintenance at ER-mitochondria contact sites.** *J Cell Biol* 2022, **221**:e202112107.
25. Kim H, Lee S, Jun Y, Lee C: **Structural basis for mitoguardin-2 mediated lipid transport at ER-mitochondrial membrane contact sites.** *Nat Commun* 2022, **13**:3702.
26. Hong Z, Adlakha J, Wan N, Guinn E, Giska F, Gupta K, Melia TJ, Reinisch KM: **Mitoguardin-2-mediated lipid transfer preserves mitochondrial morphology and lipid droplet formation.** *J Cell Biol* 2022, **221**:e202207022.
27. Op den Kamp JA: **Lipid asymmetry in membranes.** *Annu Rev Biochem* 1979, **48**:47–71.
28. Lorent JH, Levental KR, Ganesan L, Rivera-Longworth G, Sezgin E, Doktorova M, Lyman E, Levental I: **Plasma membranes are asymmetric in lipid unsaturation, packing and protein shape.** *Nat Chem Biol* 2020, **16**:644–652.
29. Lopez-Marques RL, Gourdon P, Günther Pomorski T, Palmgren M: **The transport mechanism of P4 ATPase lipid flippases.** *Biochem J* 2020, **477**:3769–3790.
30. Yabas M, Coupland LA, Cromer D, Winterberg M, Teoh NC, D'Rozario J, Kirk K, Bröer S, Parish CR, Enders A: **Mice deficient in the putative phospholipid flippase ATP11C exhibit altered erythrocyte shape, anemia, and reduced erythrocyte life span.** *J Biol Chem* 2014, **289**:19531–19537.
31. Onat OE, Gulsuner S, Bilguvar K, Nazli Basak A, Topaloglu H, Tan M, Tan U, Gunel M, Ozcelik T: **Missense mutation in the ATPase, aminophospholipid transporter protein ATP8A2 is associated with cerebellar atrophy and quadrupedal locomotion.** *Eur J Hum Genet* 2013, **21**:281–285.
32. Li T, Yu D, Oak HC, Zhu B, Wang L, Jiang X, Molday RS, Kriegstein A, Piao X: **Phospholipid-flippase chaperone CDC50A is required for synapse maintenance by regulating phosphatidylserine exposure.** *EMBO J* 2021, **40**:e107915.
33. Park J, Choi Y, Jung E, Lee S-H, Sohn J-W, Chung W-S: **Microglial MERTK eliminates phosphatidylserine-displaying inhibitory post-synapses.** *EMBO J* 2021, **40**:e107121.
34. Neniskyte U, Kuliesiute U, Vadisiute A, Jevdokimenko K, Coletta L, Deivasigamani S, Pamedytyte D, Daugelaviciene N, Dabkeviciene D, Perlas E et al.: **Phospholipid scramblase Xkr8 is required for developmental axon pruning via phosphatidylserine exposure.** *EMBO J* 2023:e111790.
- \*35. Lala T, Doan JK, Takatsu H, Hartzell HC, Shin H-W, Hall RA: **Phosphatidylserine exposure modulates adhesion GPCR BAI1 (ADGRB1) signaling activity.** *J Biol Chem* 2022, **298**:102685.  
This paper sheds light on the role of PS exposure in the signaling activity of BAI1 GPCR. It demonstrates that the signaling activity of BAI1 is reduced when PS is kept in the cytosolic leaflet by ATP11A and that BAI1 and ATP11A interact with each other.
36. Timcenko M, Dieudonne T, Montigny C, Boesen T, Lyons JA, Lenoir G, Nissen P: **Structural Basis of Substrate-Independent Phosphorylation in a P4-ATPase Lipid Flippase.** *J Mol Biol* 2021, **433**:167062.
37. Hiraizumi M, Yamashita K, Nishizawa T, Nureki O: **Cryo-EM structures capture the transport cycle of the P4-ATPase flippase.** *Science* 2019, **365**:1149–1155.
38. Cheng M-T, Chen Y, Chen Z-P, Liu X, Zhang Z, Chen Y, Hou W-T, Zhou C-Z: **Structural insights into the activation of autoinhibited human lipid flippase ATP8B1 upon substrate binding.** *Proc Natl Acad Sci USA* 2022, **119**:e2118656119.
39. Dieudonne T, Herrera SA, Laursen MJ, Lejeune M, Stock C, Slimani K, Jaxel C, Lyons JA, Montigny C, Pomorski TG, et al.: **Autoinhibition and regulation by phosphoinositides of ATP8B1, a human lipid flippase associated with intrahepatic cholestatic disorders.** *Elife* 2022, **11**:e75272.
40. Natarajan P, Liu K, Patil DV, Sciorra VA, Jackson CL, Graham TR: **Regulation of a Golgi flippase by phosphoinositides and an ArfGEF.** *Nat Cell Biol* 2009, **11**:1421–1426.

41. Nagata S, Sakuragi T, Segawa K: **Flippase and scramblase for phosphatidylserine exposure.** *Curr Opin Immunol* 2020, **62**:31–38.
42. Kalienkova V, Mosina VC, Paulino C: **The Groovy TMEM16 Family: Molecular Mechanisms of Lipid Scrambling and Ion Conduction.** *J Mol Biol* 2021, **43**:166491.
- \*43. Sakuragi T, Kanai R, Tsutsumi A, Narita H, Onishi E, Nishino K, Miyazaki T, Baba T, Kosako H, Nakagawa A, et al.: **The tertiary structure of the human Xkr8-Basigin complex that scrambles phospholipids at plasma membranes.** *Nat Struct Mol Biol* 2021, **28**:825–834.  
The first structure of a scramblase from the Xkr family, revealing a novel fold, the interaction mode with the ancillary subunit basigin, a phosphatidylcholine binding site and a possible pathway for phospholipid scrambling.
- \*44. Straub MS, Alvadia C, Sawicka M, Dutzler R: **Cryo-EM structures of the caspase-activated protein XKR9 involved in apoptotic lipid scrambling.** *Elife* 2021, **10**.  
One of the two papers published in 2021 unraveling the structure of an Xkr family member. This study provides an alternative hypothesis as to the path taken by lipids through the protein and comparison of full-length and caspase-cleaved structures provides a molecular basis for the activation of Xkr9 by caspases.
- \*\*45. Maruoka M, Zhang P, Mori H, Imanishi E, Packwood DM, Harada H, Kosako H, Suzuki J: **Caspase cleavage releases a nuclear protein fragment that stimulates phospholipid scrambling at the plasma membrane.** *Mol Cell* 2021, **81**:1397–1410.e9.  
An impressive study providing compelling evidence that, in addition to its own cleavage by caspase 3, the Xkr4 scramblase requires binding of a C-terminal peptide released upon cleavage of the nuclear protein XRCC4 by caspase 3.
- \*46. Shiomi A, Nagao K, Yokota N, Tsuchiya M, Kato U, Juni N, Hara Y, Mori MX, Mori Y, Ui-Tei K, et al.: **Extreme deformability of insect cell membranes is governed by phospholipid scrambling.** *Cell Rep* 2021, **35**:109219.  
In this study, the authors show that Drosophila cell membranes are highly deformable compared to their mammalian counterparts. This high deformability is associated with a lack of transbilayer lipid asymmetry, induced by the presence of a constitutively active Xkr protein. Xkr modulates the deformability of cell membranes by altering the architecture of the actin cortex as well as the mechanical properties of the phospholipid bilayer.
47. Banerjee T, Biswas D, Pal DS, Miao Y, Iglesias PA, Devreotes PN: **Spatiotemporal dynamics of membrane surface charge regulates cell polarity and migration.** *Nat Cell Biol* 2022, **24**:1499–1515.
- \*\*48. Ghanbarpour A, Valverde DP, Melia TJ, Reinisch KM: **A model for a partnership of lipid transfer proteins and scramblases in membrane expansion and organelle biogenesis.** *Proc Natl Acad Sci USA* 2021, **118**:e2101562118.  
Among the first reports demonstrating a role for VMP1, TMEM41B and ATG9 as phospholipid scramblases, and the ability of the LTP ATG2 to interact with VMP1 and TMEM41B via one end and ATG9A via the other. This study proposes that functional coupling between LTPs and scramblases is an effective mechanism for lipid supply and stable membrane building in different cell processes.
49. Matoba K, Kotani T, Tsutsumi A, Tsuji T, Mori T, Noshiro D, Sugita Y, Nomura N, Iwata S, Ohsumi Y, et al.: **Atg9 is a lipid scramblase that mediates autophagosomal membrane expansion.** *Nat Struct Mol Biol* 2020, **27**:1185–1193.
50. Li YE, Wang Y, Du X, Zhang T, Mak HY, Hancock SE, McEwen H, Pandzic E, Whan RM, Aw YC, et al.: **TMEM41B and VMP1 are scramblases and regulate the distribution of cholesterol and phosphatidylserine.** *J Cell Biol* 2021, **220**:e202103105.
51. Osawa T, Matoba K, Noda NN: **Lipid Transport from Endoplasmic Reticulum to Autophagic Membranes.** *Cold Spring Harb Persp Biol* 2022, **14**:a041254.
52. Yamakuchi Y, Kurokawa Y, Konishi R, Fukuda K, Masatani T, Fujita A: **Selective increment of phosphatidylserine on the autophagic body membrane in the yeast vacuole.** *FEBS Lett* 2021, **595**:2197–2207.
- \*53. Durgan J, Lystad AH, Sloan K, Carlsson SR, Wilson MI, Marcassa E, Ulferts R, Webster J, Lopez-Clavijo AF, Wakelam MJ, et al.: **Non-canonical autophagy drives alternative ATG8 conjugation to phosphatidylserine.** *Mol Cell* 2021, **81**:2031–2040.e8.  
This study reports an unexpected discovery that during non-conventional autophagy, where the hallmark autophagy protein ATG8 is conjugated to single membranes, ATG8 is lipidated to PS instead of to PE. The authors provide the molecular mechanism for the change of specificity of the lipid-conjugating enzymes.
54. D'Ambrosio JM, Albanèse V, Lipp N-F, Fleuriot L, Debayle D, Drin G, Copic A: **Osh6 requires Ist2 for localization to ER-PM contacts and efficient phosphatidylserine transport in budding yeast.** *J Cell Sci* 2020, **133**.

55. Ryoden Y, Segawa K, Nagata S: **Requirement of Xk and Vps13a for the P2X7-mediated phospholipid scrambling and cell lysis in mouse T cells.** *Proc Natl Acad Sci USA* 2022, **119**:e2119286119.
56. Guillén-Samander A, Wu Y, Pineda SS, García FJ, Eisen JN, Leonzino M, Ugur B, Kellis M, Heiman M, De Camilli P: **A partnership between the lipid scramblase XK and the lipid transfer protein VPS13A at the plasma membrane.** *Proc Natl Acad Sci USA* 2022, **119**:e2205425119.
57. Vance JE: **Phospholipid synthesis in a membrane fraction associated with mitochondria.** *J Biol Chem* 1990, **265**:7248–7256.
58. Kattan WE, Liu J, Montufar-Solis D, Liang H, Brahmendra Barathi B, van der Hoeven R, Zhou Y, Hancock JF: **Components of the phosphatidylserine endoplasmic reticulum to plasma membrane transport mechanism as targets for KRAS inhibition in pancreatic cancer.** *Proc Natl Acad Sci USA* 2021, **118**:e2114126118.
59. Zhou Y, Prakash P, Liang H, Cho K-J, Gorfe AA, Hancock JF: **Lipid-Sorting Specificity Encoded in K-Ras Membrane Anchor Regulates Signal Output.** *Cell* 2017, **168**:239–251.e16.
60. Zhou Y, Prakash PS, Liang H, Gorfe AA, Hancock JF: **The KRAS and other prenylated polybasic domain membrane anchors recognize phosphatidylserine acyl chain structure.** *Proc Natl Acad Sci USA* 2021, **118**:e2014605118.
61. Maekawa M, Fairm GD: **Complementary probes reveal that phosphatidylserine is required for the proper transbilayer distribution of cholesterol.** *J Cell Sci* 2015, **128**:1422–1433.
62. Trinh MN, Brown MS, Goldstein JL, Han J, Vale G, McDonald JG, Seemann J, Mendell JT, Lu F: **Last step in the path of LDL cholesterol from lysosome to plasma membrane to ER is governed by phosphatidylserine.** *Proc Natl Acad Sci USA* 2020, **117**:18521–18529.
63. Castro IG, Shortill SP, Dziurdzik SK, Cadou A, Ganesan S, Valenti R, David Y, Davey M, Mattes C, Thomas FB, et al.: **Systematic analysis of membrane contact sites in *Saccharomyces cerevisiae* uncovers modulators of cellular lipid distribution.** *Elife* 2022, **11**:e74602.
64. Liu J, van der Hoeven R, Kattan WE, Chang JT, Montufar-Solis D, Chen W, Wong M, Zhou Y, Lebrilla CB, Hancock JF: **Glycolysis regulates KRAS plasma membrane localization and function through defined glycosphingolipids.** *Nat Commun* 2023, **14**:465–16.
65. Raghupathy R, Anilkumar AA, Polley A, Singh PP, Yadav M, Johnson C, Suryawanshi S, Saikam V, Sawant SD, Panda A, et al.: **Transbilayer lipid interactions mediate nanoclustering of lipid-anchored proteins.** *Cell* 2015, **161**:581–594.
66. Platre MP, Bayle V, Armengot L, Bareille J, Marquès-Bueno MDM, Creff A, Maneta-Peyret L, Fiche J-B, Nollmann M, Miège C, et al.: **Developmental control of plant Rho GTPase nano-organization by the lipid phosphatidylserine.** *Science* 2019, **364**:57–62.
67. Smokvarska M, Bayle V, Maneta-Peyret L, Fouillen L, Poutout A, Dongois A, Fiche J-B, Gronnier J, Garcia J, Höfte H, et al.: **The receptor kinase FERONIA regulates phosphatidylserine localization at the cell surface to modulate ROP signaling.** *Sci Adv* 2023, **9**:eadd4791.
68. Bisio H, Krishnan A, Marq J-B, Soldati-Favre D: **Toxoplasma gondii phosphatidylserine flippase complex ATP2B-CDC50.4 critically participates in microneme exocytosis.** *PLoS Pathog* 2022, **18**:e1010438.
69. Ji M, Li M, Sun L, Zhao H, Li Y, Zhou L, Yang Z, Zhao X, Qu W, Xue H, et al.: **VMP1 and TMEM41B are essential for DMV formation during  $\beta$ -coronavirus infection.** *J Cell Biol* 2022, **221**:e202112081.
70. Braga L, Ali H, Secco I, Chiavacci E, Neves G, Goldhill D, Penn R, Jimenez-Guardeño JM, Ortega-Prieto AM, Bussani R, et al.: **Drugs that inhibit TMEM16 proteins block SARS-CoV-2 spike-induced syncytia.** *Nature* 2021, **594**:88–93.
71. Sim J-R, Shin DH, Park P-G, Park S-H, Bae J-Y, Lee Y, Kang D-Y, Kim YJ, Aum S, Noh SH, et al.: **Amelioration of SARS-CoV-2 infection by ANO6 phospholipid scramblase inhibition.** *Cell Rep* 2022, **40**:111117.
72. Baggen J, Persoons L, Vanstreels E, Jansen S, Van Looveren D, Boeckx B, Geudens V, De Man J, Jochmans D, Wauters J, et al.: **Genome-wide CRISPR screening identifies TMEM106B as a proviral host factor for SARS-CoV-2.** *Nat Genet* 2021, **53**:435–444.
73. Nanbo A, Maruyama J, Imai M, Ujie M, Fujioka Y, Nishide S, Takada A, Ohba Y, Kawaoka Y: **Ebola virus requires a host scramblase for externalization of phosphatidylserine on the surface of viral particles.** *PLoS Pathog* 2018, **14**:e1006848.
74. Husby ML, Amiar S, Prugar LI, David EA, Plescia CB, Huie KE, Brannan JM, Dye JM, Pienaar E, Stahelin RV: **Phosphatidylserine clustering by the Ebola virus matrix protein is a critical step in viral budding.** *EMBO Rep* 2022, **23**:e51709.