



HAL
open science

Cardiorespiratory coupling in the bottlenose dolphin (*Tursiops truncatus*)

A. Fahlman, J. Mcknight, A. Blawas, N. West, Angelo Torrente, K. Aoki

► **To cite this version:**

A. Fahlman, J. Mcknight, A. Blawas, N. West, Angelo Torrente, et al.. Cardiorespiratory coupling in the bottlenose dolphin (*Tursiops truncatus*). *Frontiers in Physiology*, 2023, 14, pp.1234432. 10.3389/fphys.2023.1234432 . hal-04272456

HAL Id: hal-04272456

<https://hal.science/hal-04272456>

Submitted on 8 Nov 2023

HAL is a multi-disciplinary open access archive for the deposit and dissemination of scientific research documents, whether they are published or not. The documents may come from teaching and research institutions in France or abroad, or from public or private research centers.

L'archive ouverte pluridisciplinaire **HAL**, est destinée au dépôt et à la diffusion de documents scientifiques de niveau recherche, publiés ou non, émanant des établissements d'enseignement et de recherche français ou étrangers, des laboratoires publics ou privés.



Distributed under a Creative Commons Attribution 4.0 International License



OPEN ACCESS

EDITED BY

Andrew T. Lovering,
University of Oregon, United States

REVIEWED BY

Randall William Davis,
Texas A&M University at Galveston,
United States

Bill Milsom,
University of British Columbia, Canada

*CORRESPONDENCE

A. Fahlman,
✉ gdrsl16@gmail.com

RECEIVED 04 June 2023

ACCEPTED 11 September 2023

PUBLISHED 21 September 2023

CITATION

Fahlman A, Mcknight JC, Blawas AM,
West N, Torrente AG and Aoki K (2023),
Cardiorespiratory coupling in the
bottlenose dolphin (*Tursiops truncatus*).
Front. Physiol. 14:1234432.
doi: 10.3389/fphys.2023.1234432

COPYRIGHT

© 2023 Fahlman, Mcknight, Blawas, West,
Torrente and Aoki. This is an open-access
article distributed under the terms of the
[Creative Commons Attribution License
\(CC BY\)](#). The use, distribution or
reproduction in other forums is
permitted, provided the original author(s)
and the copyright owner(s) are credited
and that the original publication in this
journal is cited, in accordance with
accepted academic practice. No use,
distribution or reproduction is permitted
which does not comply with these terms.

Cardiorespiratory coupling in the bottlenose dolphin (*Tursiops truncatus*)

A. Fahlman^{1,2,3*}, J. C. Mcknight⁴, A. M. Blawas⁵, N. West⁶,
A. G. Torrente⁷ and K. Aoki⁸

¹Fundación Oceanográfica de la Comunidad Valenciana, Gran Vía Marques del Turia 19, Valencia, Spain, ²Kolmården Wildlife Park, Kolmården, Sweden, ³Global Diving Research SL, Valencia, Spain, ⁴Sea Mammal Research Unit, Scotland, United Kingdom, ⁵Duke University Marine Laboratory, Nicholas School of the Environment Duke University, Beaufort, NC, United States, ⁶Dolphin Quest, Kahala Resort, Waikoloa, HI, United States, ⁷Institut de Génomique Fonctionnelle, Université de Montpellier, CNRS, INSERM, Montpellier, France, ⁸Department of Marine Bioscience, Atmosphere and Ocean Research Institute, The University of Tokyo, Chiba, Japan

Introduction: The bottlenose dolphin (*Tursiops truncatus*) is an intermittent breather, where the breath begins with an exhalation followed by inhalation and an extended inter-breath interval ranging from 10 to 40 s. Breathing has been shown to alter both the instantaneous heart rate (if_H) and stroke volume (iSV) in the bottlenose dolphin, with a transitory ventilatory tachycardia following the breath, and an exponential decrease to a stable if_H around 40 beats \bullet min⁻¹ during the inter-breath period. As the total breath duration in the dolphin is around 1 s, it is not possible to assess the contribution of exhalation and inhalation to these changes in cardiac function during normal breathing.

Methods: In the current study, we evaluated the if_H response by separating expiration and inspiration of a breath, which allowed us to distinguish their respective contribution to the changes in if_H . We studied 3 individual male bottlenose dolphins trained to hold their breath between the different respiratory phases (expiration and inhalation).

Results: Our data show that inspiration causes an increase in if_H , while expiration appears to result in a decrease in if_H .

Discussion: These data provide improved understanding of the cardiorespiratory coupling in dolphins, and show how both exhalation and inhalation alters if_H .

KEYWORDS

cardiorespiratory physiology, marine mammal, cetacean, heart rate, perfusion, ventilatory tachycardia

Introduction

Cardiorespiratory coupling, where breathing results in variation in the instantaneous heart rate (if_H), has been reported in seals and cetaceans (Irving, 1939; Ridgway, 1972; Kooyman, 1985; Kaczmarek et al., 2018; Fahlman et al., 2020b; Blawas et al., 2021b). In the bottlenose dolphin (*Tursiops truncatus*), the intermittent breathing pattern begins with a rapid exhalation followed by inhalation with a breath duration of approximately 1 s (Fahlman et al., 2017). The end of the breath, i.e., end-inspiration, results in an initial increase in if_H followed by a slow decline to a heart rate between 35 and 50 beats \bullet min⁻¹ (Cature et al., 2019; Fahlman et al., 2020b; Blawas et al., 2021a). During the inter-breath

TABLE 1 Animal identification (ID), body mass (M_b), year of birth (YOB), number of breaths analyzed (N), and mean instantaneous heart rate (f_H) for pre- and post-breaths, with either complete breaths (*Full*, exhalation followed by immediate inhalation), or either exhalation (*Ex*) or inhalation (*In*). The uneven number between the number of exhalations and inhalations was due to exhalation followed by inhalations outside the pneumotachometer (i.e., flow not measured, 63H4 and 90N6), or repeated shallow exhalations before a full inspiration (9FL3).

ID	M_b (kg)	YOB	N			Pre- f_H (beats \cdot min $^{-1}$)			Post- f_H (beats \cdot min $^{-1}$)		
			<i>Full</i>	<i>Ex</i>	<i>In</i>	<i>Full</i>	<i>Ex</i>	<i>In</i>	<i>Full</i>	<i>Ex</i>	<i>In</i>
63H4	178	1991	8	5	6	79.5 \pm 9.0	78.9 \pm 9.2	55.3 \pm 13.0	88.7 \pm 7.1	54.6 \pm 8.6	79.8 \pm 14.6
9FL3	182	1997	20	39	5	59.2 \pm 8.8	62.1 \pm 8.5	50.1 \pm 14.4	71.9 \pm 6.7	44.1 \pm 5.7	67.2 \pm 6.9
90N6	244	1985	17	9	8	73.4 \pm 19.9	62.8 \pm 15.9	54.7 \pm 5.2	84.4 \pm 8.6	55.5 \pm 11.2	69.9 \pm 2.6

period there is often a sinusoidal variation in if_H with a period of varying duration of between 4 and 10 s (Cauture et al., 2019; Blawas et al., 2021a). The magnitude of this respiratory tachycardia varies both with changes in breathing frequency (f_R) and tidal volume (V_T) (Cauture et al., 2019; Blawas et al., 2021a; Blawas et al., 2021b). However, the respiratory characteristics of the bottlenose dolphin, with high respiratory flow during exhalation and a breath duration that lasts one or two heartbeat cycles, makes it difficult to separately evaluate how exhalation and inhalation affect cardiac function.

To improve our understanding of the ventilatory tachycardia, and to assess the variation in if_H during the exhalation and inspiration phases in bottlenose dolphins, we measured electrocardiograms (ECGs) using a data logger with suction cup-embedded electrodes and respiratory flow using a custom-built pneumotachometer during both normal breaths and breaths where exhalation and inhalation were separated. Our results provide evidence that normal breaths result in a respiratory tachycardia, and that exhalation and inhalation, respectively, result in a decrease and increase in if_H . Thus, the cardiac variability in bottlenose dolphins associated with respiration occurs at their typical breathing frequencies between 0.025 and 0.1 Hz. The results also highlight a second frequency of cardiac variability during breathing in the range of 0.1–0.2 Hz, possibly associated with blood pressure regulation. The data presented in the current study imply that both exhalation and inhalation alter if_H , and that breathing frequency alters cardiac function and heart rate.

Materials and methods

Animal information

Three male bottlenose dolphins housed in managed care were studied for this work (Table 1). Individual animal ID, body mass, and year of birth are summarized in Table 1. Dolphins were not restrained and could refuse to participate or withdraw at any point during the experimental trial. Before data collection, animals had been desensitized to the equipment and trained for novel research-associated behaviours using operant conditioning (Fahlman et al., 2015; Fahlman et al., 2020b). These individual animals had participated in similar cardiorespiratory trials on numerous occasions since 2015 (Fahlman et al., 2015; Fahlman et al., 2019a; Fahlman et al., 2019b; Cauture et al., 2019; Fahlman et al., 2020b; Blawas et al., 2021a).

Research trials

During each trial, the dolphin remained stationary in the water, allowing placement of the ECG data logger on the chest (ECG400-DT, Little Leonardo co.) and placement of the pneumotachometer over the blow-hole (Fahlman et al., 2015; Aoki et al., 2021).

The dolphins performed two types of trials for data collection. During *normal breathing*, an exhalation was followed by an immediate inhalation. During an *exhale hold*, a single exhalation was followed by an inter-breath interval of between 5 and 45 s, followed by inhalation. In one dolphin, several exhalation signals were given, which resulted in repeated exhalations before inhalation, i.e., *repeated exhale hold*. These breathing manoeuvres were repeated during a single session and multiple sessions were repeated for each animal over several days. One individual was trained to perform repeated exhales before inhalation with a respiratory pause between 3 and 5 s.

The dolphins were not fasted, but were inactive before, for between 2 and 5 min, and during each trial, which lasted between 5 and 10 min. All trials were conducted between 7 and 10 November 2022, either in the morning or afternoon.

Measurements

We analyzed the if_H 1–3 s before (pre) and after (post) a full breath (*Full*), exhalation (*Ex*), or inhalation (*In*). We did this to assess the immediate cardiovascular response caused by ventilation, and due to limitations in obtaining extended exhalation holds. The relative change in if_H (%) before and after each respiratory phase was analyzed as (post-pre) \cdot pre $^{-1}$ \cdot 100. Thus, a positive or negative change is, respectively, an increase or decrease in if_H following a breathing phase.

The respiratory timing was measured using a custom-made pneumotachometer, as previously detailed (Fahlman et al., 2015; Fahlman et al., 2020a), but briefly summarized below. Respiratory flows were measured using a custom-made Fleisch type pneumotachometer (Mellow Design, Valencia, Spain), which housed a low-resistance laminar flow matrix (Item #Z9A887-2, Merriam Process Technologies, Cleveland, OH). A differential pressure transducer (Spirometer Pod, ML 311, ADInstruments, Colorado Springs, CO) was connected to the pneumotachometer with two, 310 cm lengths of 2 mm I.D., firm walled, flexible tubing. The differential pressure transducer was connected to a data acquisition system (Powerlab 8/35, ADInstruments, Colorado Springs, CO), and the data were captured at 400 Hz and displayed on a computer running LabChart (v. 8.1,

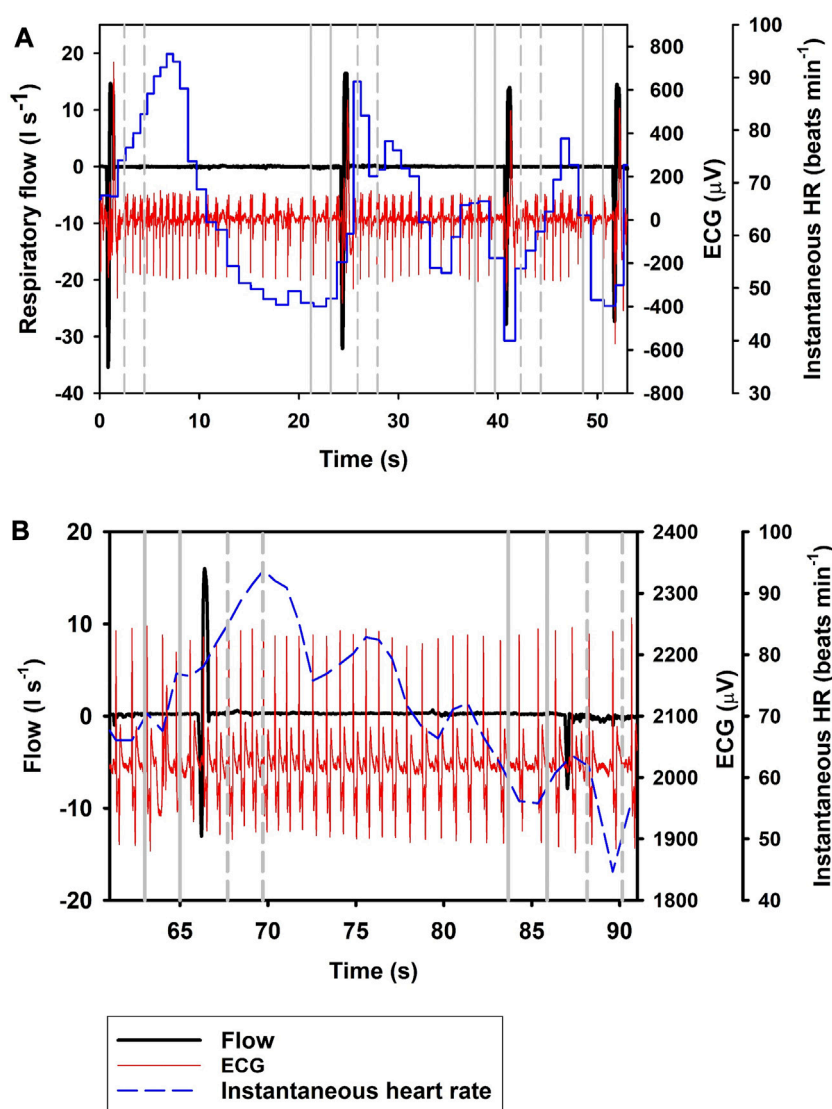


FIGURE 1

Respiratory flow, raw ECG, and instantaneous heart rate (HR) during (A) four single full (*Full*; $t_1 = 0.7$ s, $t_2 = 25$ s, $t_3 = 41$ s, $t_4 = 52$ s) breaths, and (B) a single full breath ($t = 67$ s) with a 20 s interbreath interval until the next exhalation (*Ex*; $t = 88$ s). Vertical lines show section used for analysis, with solid gray line indicating pre- and broken gray line post-breath.

ADInstruments, Colorado Springs, CO). The respiratory flow was used to determine the beginning and end of each exhalation and inhalation for a total of 117 respiratory events (Table 1). The beginning and end of a respiratory phase were used as time = 0 for the averaging of the heart rate. For example, for a *Full* breath time = 0 for the pre data was at the beginning of the exhalation, while for post time = 0 was the end of the inhalation.

The respiratory flow and heart rate signals were synchronized by aligning start and end times of data collection.

Statistical analysis

We used a general linear mixed-effects (GLM) model with nested random effects of individual to account for differences

between animals. Models were fitted in the R statistical computing software (R Core Team, 2021; RStudio Team, 2021) using the *nlme* package (Pinheiro et al., 2021).

Results

Figure 1 shows the if_H following *Full* breaths, with panel A) showing the response during repeated *Full* breaths, and panel B) following a single *Full* breath followed by an exhalation. The most parsimonious model showed that if_H increased by 19.9% following a *Full* breath (Eq. 1; Table 1; Figure 1, $df = 2$, $\chi^2 = 84.2$). When breaths were separated into exhalation and inhalation, *Ex* resulted in a 33.5% decrease in if_H . *In* resulted in an additional 20.1% increase in if_H (Eq. 1; Table 1; Figures 2, 3), similar to what we recorded during a normal breathing cycle.

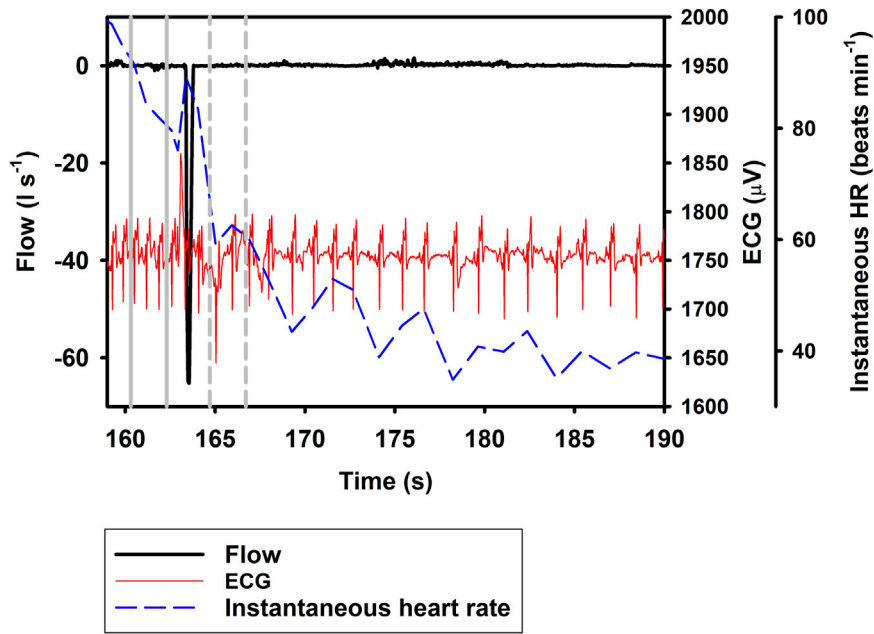


FIGURE 2
Respiratory flow, raw ECG, and instantaneous heart rate (HR) during a single exhalation (*Ex*; *t* = 164 s). Vertical lines show section used for analysis, with solid gray line indicating pre- and broken gray line post-breath.

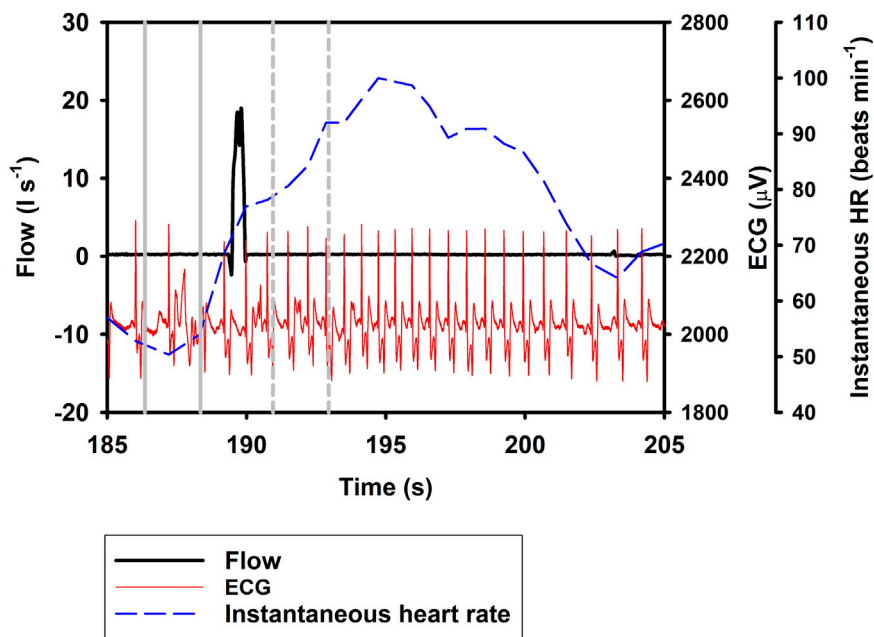


FIGURE 3
Respiratory flow, raw ECG, and instantaneous heart rate (HR) during a single inhalation (*In*; *t* = 190 s). Vertical lines show section used for analysis, with solid gray line indicating pre- and broken gray line post-breath.

$$\Delta f_H (\%) = 19.9 (2.8) - 33.5 (3.9) \bullet Ex + 20.1 (5.5) \bullet In \quad (1)$$

Discussion

For repeated *Ex*, the decrease in if_H was not affected by the number of repeated exhalations (*df* = 1, Loglikelihood = 447.4, χ^2 = 0.03).

In the current study, we show a respiratory tachycardia associated with normal breaths in the bottlenose dolphin, similar

to what has been previously reported in this species and also other small to medium sized cetaceans (Irving, 1939; Ridgway, 1972; Fahlman et al., 2020b; Blawas et al., 2021b). We also report that when exhalation and inhalation are separated, the changes in if_H associated with exhalation and inhalation appear to occur in opposite directions. In addition, we confirm that the sinusoidal variation in if_H of between 0.1 and 0.2 Hz that is present following *Full* breaths (Figure 1B) (Cauture et al., 2019; Fahlman et al., 2020a; Blawas et al., 2021a; Blawas et al., 2021b), also is present after exhalations and inhalations (Figures 2, 3). We propose that this respiratory tachycardia may be important to enhance gas exchange during inspiration and help reduce cardiac work during the extended inter-breath intervals in intermittent breathers. The respiratory tachycardia we report in the bottlenose dolphin has implications for how to define resting heart rate, which may help improve comparative studies.

The data provided in the current study show that following a *Full* breath, there is a temporary 19.9% increase in if_H (Figure 1; Eq. 1; Table 1). We restricted the analysis of if_H to a 2-s interval between 1 and 3 s before or after the breathing phase for two reasons; first, we wanted to show that the response develops soon following a breath phase, and second, to be able to assess the effect of repeated exhalation. Under conditions of held phases of respiration, our data further suggest a decrease in if_H by 33.5% following exhalation (Figures 1, 2), with a 20.1% increase during inhalation (Figure 3; Eq. 1; Table 1). Notably, the magnitude of increase in if_H during the short period following a *Full* breath (19.9%, range: 14.9%–59.8%) was less than has been reported in previous studies in cetaceans where the increase can be as high as 100% (Ridgway, 1972; Fahlman et al., 2019a; Cauture et al., 2019; Blawas et al., 2021a; Blawas et al., 2021b). One reason for this could be the variation in the temporal response during *Full* breaths, where the maximal if_H following the breath can take several seconds to develop (Figure 1A). Thus, the increase may not have fully developed during our restricted period of analysis following a *Full* breath. When the *In* was separated from the *Ex* phase, it resulted in an additional 20.1% increase in if_H (Figure 3, Table 1, Eq. 1). One possible explanation for this result could be that during a normal breath the *Ex* phase partially suppresses the effects of the *In* phase, which gives rise to the temporary increase in if_H that we report. However, when breathing phases are separated the responses represent the distinct effect of the *In* and *Ex* phases. Thus, separating the breathing phases allows the effect of lung inflation and deflation on if_H to be observed on an extended time scale. (Eq. 1).

Following a *Full* breath in the bottlenose dolphin, the transient increase followed by an exponential decrease in if_H between breaths commonly does not reach a stable value until after 7–12 s, but can be as long as 15 s (Figure 1A) (Irving, 1939; Ridgway, 1972; Fahlman et al., 2019b; Cauture et al., 2019; Blawas et al., 2021a; Blawas et al., 2021b). In the present study, when the exhalation was separated from the inhalation, the if_H decreased by 33.5% within the 1–3 s after the exhalation. One alternative explanation to the decrease in if_H that we observed is that this merely represents the progressive sinusoidal decline during the inter-breath period (Figure 1B). Thus, it is possible that the decrease in if_H following exhalation alone is the result of this continuous decline. If so, *Ex* may not result in a further decrease in heart rate, however, we do not believe this is the case as studies in other mammals show a decrease in heart rate during a reduction in lung volume (Hayano et al., 1996; Looga, 1997; Mortola et al., 2015). Finally, in a limited number of samples ($n = 64$), we analyzed the change in if_H

between 1 and 5 s following the inhalation or exhalation (i.e., a 4-s interval), which showed no further increase in if_H compared to if_H between 1 to 3 s following inhalation, but that following exhalation if_H decreased by an average of 42.6%. Thus, if *Ex* did not further reduce if_H there would not have been a further reduction.

Although these results are preliminary, we show that the *Ex* and *In* phases of respiration result in rapid and opposite f_H responses. Thus, after breathing, the tachycardia followed by a slowly declining if_H , may be a compound effect of the rapid inhalation and/or lung inflation resulting in transient vagal withdrawal or sympathetic activation, followed by the gradual extinction of this chronotropic stimulation. In addition, it has been shown that both f_R and VT alter the magnitude of the change in if_H (Fahlman et al., 2019b; Cauture et al., 2019; Blawas et al., 2021a; Blawas et al., 2021b). For example, when varying the f_R from 2 breaths \bullet min⁻¹ to 6 breaths \bullet min⁻¹ the average resting if_H increased by 40% (Cauture et al., 2019; Fahlman et al., 2020b; Blawas et al., 2021a; Blawas et al., 2021b). Consequently, this makes it difficult to assign a resting f_H that can be used to compare within and between species (Kooyman, 1985). In comparative physiology, resting f_H is an important measure as it provides a link between how cardiac function relates to energy use, e.g., allometric scaling (He et al., 2023). In this context, the resting f_H should be the value that represents no limitation to blood flow to support organs with O₂ for aerobic metabolism (Kooyman, 1985). However, variation in respiratory effort (f_R and VT) likely causes large variation between species and studies. Thus, without accounting for the cardiorespiratory coupling, studies, such as allometric scaling and diving physiology, that use an estimated “resting” f_H rate from intermittent breathers may have inflated variance.

Cardiac variability is a well-known phenomenon in continuous breathing mammals, referred to as respiratory sinus arrhythmia (RSA), where the if_H varies throughout the respiratory phase, with increase and decrease of if_H related to the inspiration and exhalation phases (Ben-Tal et al., 2012). The cyclical variation is thought to improve gas exchange or to maintain blood gases while minimizing the work of breathing (Hirsch and Bishop, 1981; Ben-Tal et al., 2012; Mortola et al., 2015). We propose that the respiratory tachycardia that we report in intermittent breathing bottlenose dolphin serves a similar purpose. Following inhalation, the pulmonary PO₂ and PCO₂ are, respectively higher and lower, which enhances the diffusion rate of both gases with the blood in the pulmonary capillary. The increase in instantaneous cardiac output, through increase in if_H and an increase in the instantaneous stroke volume, helps to enhance O₂ uptake and CO₂ removal (Fahlman et al., 2020b). Inspiration likely also results in a transient change in arterial blood pressure (Figure 1B), which then is seen as the sinusoidal variation in if_H during the inter-breath interval (Larsen et al., 2010). The initial increase followed by a decrease in both f_H and stroke volume helps reduce cardiac work, while also enhancing gas exchange. This cardiorespiratory strategy may be especially important as dolphins return to the surface following a dive, when reducing the recovery time at the surface allows the dolphin to return to the foraging patch. Past data in marine mammals have shown that the duration of the surface interval is mainly driven by CO₂ removal from the tissues and blood (Reed et al., 1994; Reed et al., 2000; Boutilier et al., 2001; Fahlman et al., 2008) and elevated cardiac output helps transport CO₂ to the lungs and enhances gas exchange. Thus, this respiratory tachycardia has a dual effect to reduce the surface interval.

In summary, in the current study we show that cardiorespiratory coupling in the bottlenose dolphin results in a respiratory

tachycardia associated with the inhalation. When we separated the two phases of breathing, we observed that inhalation results in tachycardia similar to what we observed during a normal breathing cycle, while exhalation reduces if_H . The sinusoidal variation in if_H seen throughout the inter-breath interval is likely the effect variation in arterial blood pressure (Figure 1B), which in turn alters if_H . We propose that the cardiorespiratory coupling reported in the bottlenose dolphin, which results in a temporary increase in cardiac output, improves gas exchange and reduces recovery time during a surface interval following a dive.

Data availability statement

The raw data supporting the conclusion of this article will be made available by the authors, without undue reservation.

Ethics statement

The animal studies were approved by the Oceanographic Foundation animal care and research committee. The studies were conducted in accordance with the local legislation and institutional requirements. Written informed consent was obtained from the owners for the participation of their animals in this study. All procedures were approved by the Oceanographic Animal Care & Welfare Committee at the Fundación Oceanográfica Valencia, Spain (OCE-10-20), and the Bureau of Medicine (BUMED, NRD1170).

Author contributions

AF conceived of the study, collected and analyzed the data, and drafted the paper. NW helped collect the data, JM, AB, AT, and KA

helped interpret results and conclusions. All authors contributed to the article and approved the submitted version.

Funding

This study was funded by a grant to AF and CM from ONR (Award #N000141912560). Dolphin Quest provided in kind support. All data will be made available upon request to the corresponding author.

Acknowledgments

We are grateful to the trainers and staff at Dolphin Quest who made this study possible. We would also like to thank Peter Madsen who provided helpful advice.

Conflict of interest

The authors declare that the research was conducted in the absence of any commercial or financial relationships that could be construed as a potential conflict of interest.

Publisher's note

All claims expressed in this article are solely those of the authors and do not necessarily represent those of their affiliated organizations, or those of the publisher, the editors and the reviewers. Any product that may be evaluated in this article, or claim that may be made by its manufacturer, is not guaranteed or endorsed by the publisher.

References

- Aoki, K., Watanabe, Y., Inamori, D., Funasaka, N., and Sakamoto, K. Q. (2021). Towards non-invasive heart rate monitoring in free-ranging cetaceans: A unipolar suction cup tag measured the heart rate of trained risso's dolphins. *Philosophical Trans. R. Soc. B Biol. Sci.* 376, 20200225. doi:10.1098/rstb.2020.0225
- Ben-Tal, A., Shamailov, S. S., and Paton, J. F. R. (2012). Evaluating the physiological significance of respiratory sinus arrhythmia: looking beyond ventilation-perfusion efficiency. *J. Physiology* 590, 1989–2008. doi:10.1113/jphysiol.2011.222422
- Blawas, A. M., Nowacek, D. P., Allen, A., Rocho-Levine, J., and Fahlman, A. (2021a). Respiratory sinus arrhythmia and submersion bradycardia in bottlenose dolphins (*Tursiops truncatus*). *J. Exp. Biol.* 224, jeb234096. doi:10.1242/jeb.234096
- Blawas, A. M., Nowacek, D. P., Rocho-Levine, J., Robeck, T. R., and Fahlman, A. (2021b). Scaling of heart rate with breathing frequency and body mass in cetaceans. *Philosophical Trans. R. Soc. B Biol. Sci.* 376, 20200223. doi:10.1098/rstb.2020.0223
- Boutillier, R. G., Reed, J. Z., and Fedak, M. A. (2001). Unsteady-state gas exchange and storage in diving marine mammals: the harbor porpoise and gray seal. *Am. J. Physiology* 281, R490–R494. doi:10.1152/ajpregu.2001.281.2.R490
- Cature, F., Sterba-Boatwright, B., Miedler, S., Rocho-Levine, J., Harms, C., and Fahlman, A. (2019). Using Respiratory Sinus Arrhythmia to estimate inspired tidal volume in the bottlenose dolphin (*Tursiops truncatus*). *Front. Physiology* 10, 128. doi:10.3389/fphys.2019.00128
- Fahlman, A., Borque-Espinosa, A., Facchin, F., Ferrero Fernandez, D., Muñoz Caballero, P., Haulena, M., et al. (2020a). Comparative respiratory physiology in cetaceans. *Front. Physiol.* 11, 142–147. doi:10.3389/fphys.2020.00142
- Fahlman, A., Brodsky, M., Miedler, S., Dennison, S., Ivančić, M., Levine, G., et al. (2019a). Ventilation and gas exchange before and after voluntary static surface breath-holds in clinically healthy bottlenose dolphins, *Tursiops truncatus*. *J. Exp. Biol.* 222, jeb192211–9. doi:10.1242/jeb.192211
- Fahlman, A., Loring, S. H., Levine, G., Rocho-Levine, J., Austin, T., and Brodsky, M. (2015). Lung mechanics and pulmonary function testing in cetaceans. *J. Exp. Biol.* 218, 2030–2038. doi:10.1242/jeb.119149
- Fahlman, A., Miedler, S., Marti-Bonmati, L., Ferrero Fernandez, D., Muñoz Caballero, P., Arenarez, J., et al. (2020b). Cardiorespiratory coupling in cetaceans; a physiological strategy to improve gas exchange? *J. Exp. Biol.* 223, jeb226365. doi:10.1242/jeb.226365
- Fahlman, A., Miedler, S., Rocho-Levine, J., Jabois, A., Arenarez, J., Marti-Bonmati, L., et al. (2019b). Re-evaluating the significance of the dive response during voluntary surface apneas in the bottlenose dolphin, *Tursiops truncatus*. *Sci. Rep.* 9, 8613. doi:10.1038/s41598-019-45064-8
- Fahlman, A., Moore, M. J., and Garcia-Parraga, D. (2017). Respiratory function and mechanics in pinnipeds and cetaceans. *J. Exp. Biol.* 220, 1761–1773. doi:10.1242/jeb.126870
- Fahlman, A., Svård, C., Rosen, D. A. S., Jones, D. R., and Trites, A. W. (2008). Metabolic costs of foraging and the management of O₂ and CO₂ stores in Steller sea lions. *J. Exp. Biol.* 211, 3573–3580. doi:10.1242/jeb.023655
- Hayano, J., Yasuma, F., Okada, A., Mukai, S., and Fujinami, T. (1996). Respiratory sinus arrhythmia: A phenomenon improving pulmonary gas exchange and circulatory efficiency. *Circulation* 94, 842–847. doi:10.1161/01.cir.94.4.842
- He, R. S., De Ruiter, S., Westover, T., Somarelli, J. A., Blawas, A., Dayanidhi, D. L., et al. (2023). Allometric scaling of metabolic rate and cardiorespiratory variables in aquatic and terrestrial mammals. *Physiol. Rep.* 11, e15698. doi:10.14814/phy2.15698
- Hirsch, J. A., and Bishop, B. (1981). Respiratory sinus arrhythmia in humans: how breathing pattern modulates heart rate. *Am. J. Physiology - Heart Circulatory Physiology* 241, H620–H629. doi:10.1152/ajpheart.1981.241.4.H620

- Irving, L. (1939). Respiration in diving mammals. *Physiol. Rev.* 19, 112–134. doi:10.1152/physrev.1939.19.1.112
- Kaczmarek, J., Reichmuth, C., McDonald, B. I., Kristensen, J. H., Larson, J., Johansson, F., et al. (2018). Drivers of the dive response in pinnipeds; apnea, submergence or temperature? *J. Exp. Biol.* 221, jeb176545. doi:10.1242/jeb.176545
- Kooyman, G. L. (1985). Physiology without restraint in diving mammals. *Science* 1, 166–178. doi:10.1111/j.1748-7692.1985.tb00004.x
- Larsen, P. D., Tzeng, Y. C., Sin, P. Y. W., and Galletly, D. C. (2010). Respiratory sinus arrhythmia in conscious humans during spontaneous respiration. *Respir. Physiology Neurobiol.* 174, 111–118. doi:10.1016/j.resp.2010.04.021
- Looga, R. (1997). Reflex cardiovascular responses to lung inflation: A review. *Respir. Physiol.* 109, 95–106. doi:10.1016/s0034-5687(97)00049-2
- Mortola, J. P., Marghescu, D., and Siegrist-Johnstone, R. (2015). Respiratory sinus arrhythmia in young men and women at different chest wall configurations. *Clin. Sci.* 128, 507–516. doi:10.1042/CS20140543
- Pinheiro, J., Bates, D., DebRoy, S., and Sarkar, D. (2021). “nlme: linear and Nonlinear Mixed Effects Models. R package version 3,” in *R Core Team*, 1–152.
- Reed, J. Z., Chambers, C., Fedak, M. A., and Butler, P. J. (1994). Gas exchange of captive freely diving grey seals (*Halichoerus grypus*). *J. Exp. Biol.* 191, 1–18. doi:10.1242/jeb.191.1.1
- Reed, J. Z., Chambers, C., Hunter, C. J., Lockyer, C., Kastelein, R., Fedak, M. A., et al. (2000). Gas exchange and heart rate in the harbour porpoise, *Phocoena phocoena*. *J. Comp. Physiology B* 170, 1–10. doi:10.1007/s003600050001
- Ridgway, S. H. (1972). “Homeostasis in the aquatic environment,” in *Mammals of the sea: Biology and medicine*. Editor S. H. Ridgway (Springfield, IL: Thomas), 590–747.