



HAL
open science

Bacterial defences interact synergistically by disrupting phage cooperation

Alice Maestri, Elizabeth Pursey, Charlotte Chong, Benoit J Pons, Sylvain Gandon, Rafael Custodio, Matthew Chisnall, Anita Grasso, Steve Paterson, Kate Baker, et al.

► **To cite this version:**

Alice Maestri, Elizabeth Pursey, Charlotte Chong, Benoit J Pons, Sylvain Gandon, et al.. Bacterial defences interact synergistically by disrupting phage cooperation. 2023. <hal-04269914>

HAL Id: hal-04269914

<https://hal.science/hal-04269914v1>

Preprint submitted on 3 Nov 2023

HAL is a multi-disciplinary open access archive for the deposit and dissemination of scientific research documents, whether they are published or not. The documents may come from teaching and research institutions in France or abroad, or from public or private research centers.

L'archive ouverte pluridisciplinaire **HAL**, est destinée au dépôt et à la diffusion de documents scientifiques de niveau recherche, publiés ou non, émanant des établissements d'enseignement et de recherche français ou étrangers, des laboratoires publics ou privés.



HAL Authorization

1 **Bacterial defences interact synergistically by disrupting phage cooperation**

2

3 Alice Maestri¹, Elizabeth Pursey^{1#}, Charlotte Chong^{2#}, Benoit J. Pons¹, Sylvain Gandon³, Rafael
4 Custodio¹, Matthew Chisnall¹, Anita Grasso^{1,4}, Steve Paterson², Kate Baker², Stineke van Houte¹, Anne
5 Chevallereau^{5*}, Edze R. Westra^{1*}

6

7 ¹ Environment and Sustainability Institute, Biosciences, University of Exeter, Penryn TR10 9FE, UK

8 ² Institute of Infection, Veterinary and Ecological Sciences, University of Liverpool, Liverpool L69
9 3BX, UK

10 ³ CEFE, CNRS, Université de Montpellier, EPHE, IRD, Montpellier 34293, France

11 ⁴ Department of Comparative Biomedicine and Food Science, Università degli Studi di Padova, Padova
12 35020, Italy (current affiliation)

13 ⁵ Université Paris Cité, CNRS, INSERM, Institut Cochin, Paris F-75014, France

14

15 #*These authors contributed equally

16 Correspondence to: anne.chevallereau@inserm.fr; E.R.Westra@exeter.ac.uk

17

18 **Summary**

19 The constant arms race between bacteria and their phages has resulted in a large diversity of bacterial
20 defence systems^{1,2}, with many bacteria carrying several systems^{3,4}. In response, phages often carry
21 counter-defence genes⁵⁻⁹. If and how bacterial defence mechanisms interact to protect against phages
22 with counter-defence genes remains unclear. Here, we report the existence of a novel defence system,
23 coined MADS (Methylation Associated Defence System), which is located in a strongly conserved
24 genomic defence hotspot in *Pseudomonas aeruginosa* and distributed across Gram-positive and Gram-
25 negative bacteria. We find that the natural co-existence of MADS and a Type I E CRISPR-Cas adaptive
26 immune system in the genome of *P. aeruginosa* SMC4386 provides synergistic levels of protection
27 against phage DMS3, which carries an anti-CRISPR (*acr*) gene. Previous work has demonstrated that
28 Acr-phages need to cooperate to overcome CRISPR immunity, with a first sacrificial phage causing host
29 immunosuppression to enable successful secondary phage infections^{10,11}. Modelling and experiments
30 show that the co-existence of MADS and CRISPR-Cas provides strong and durable protection against
31 Acr-phages by disrupting their cooperation and limiting the spread of mutants that overcome MADS.
32 These data reveal that combining bacterial defences can robustly neutralise phage with counter-defence
33 genes, even if each defence on its own can be readily by-passed, which is key to understanding how
34 selection acts on defence combinations and their coevolutionary consequences.

35

1 **Introduction**

2 Phage are important drivers of the ecology and evolution of their bacterial hosts¹². In response to phage
3 predation, bacteria have evolved many different defence systems, such as Restriction-Modification
4 (RM) and CRISPR-Cas¹³. Crucially, literally dozens of previously unknown defences were discovered
5 in recent years^{2,14-19}, often aided by their clustering in defence islands^{20,21}. These defence systems
6 frequently coexist in the same genome²⁰⁻²³, which can prevent the emergence of spontaneous phage
7 mutants that overcome host resistance. For example, the co-occurrence of a Type I BREX and Type IV
8 RM systems prevents the emergence of epigenetic mutants that overcome BREX, since these are cleaved
9 by the Type IV RM system²⁴, and the co-existence of RM and CRISPR-Cas leads to a reduction in the
10 frequency of spontaneous phage mutants that escape both defences as well as a higher rate of CRISPR
11 immunity acquisition^{25,26,27}. However, many phage can employ more sophisticated counter-defence
12 mechanisms, such as anti-RM⁵, anti-CRISPR (Acr)⁶ and the more recently identified anti-CBASS^{7,8},
13 anti-Pycsar⁸ and anti-TIR-STING⁹ proteins. We currently lack an understanding of how multi-layered
14 bacterial defences impact the efficacy and deployment of these sophisticated phage counter-defence
15 systems, and how this influences bacteria-phage coevolution. Previous work on the epidemiological and
16 co-evolutionary consequences of Acr-phage infections has demonstrated that Acr are imperfect,
17 resulting in a high proportion of failed infections of CRISPR-immune bacteria⁶. This imperfection is at
18 least in part due to Acr production taking place after infection (i.e., Acr are not packaged into the phage
19 capsid)^{6,28}, whereas CRISPR immune complexes are already present in the cell upon infection. Because
20 of this, Acr-phages must cooperate to overcome CRISPR immunity: the production of Acr proteins by
21 a first sacrificial phage into a CRISPR immune host cell is necessary to enable a second Acr-phage to
22 successfully infect the same host^{10,11}. As a consequence, Acr-phages can amplify only if their density
23 exceeds a critical threshold that supports the required frequency of secondary infections. However, our
24 understanding of these dynamics is currently limited to the simple scenario where CRISPR-Cas immune
25 systems are the sole resistance determinants, and it is unclear if and how this may be impacted by the
26 presence of other defence genes in the bacterial genome.

27

28 **Results**

29 **Bacteria drive Acr-phages extinct**

30 We aimed to study how the Type IE CRISPR-Cas immune system of *P. aeruginosa* SMC4386 shapes
31 the coevolutionary interactions with its phage DMS3. The CRISPR-Cas immune system of this bacterial
32 strain carries a spacer that perfectly matches the genome of DMS3, whereas the phage carries an anti-
33 CRISPR gene (*acrIE3*) that blocks the Type IE CRISPR-Cas system²⁹. However, infection experiments
34 of *P. aeruginosa* SMC4386 with phage DMS3^{vir}, a c-repressor mutant locked in the lytic cycle, revealed
35 that, although phages successfully adsorbed to the bacteria (Extended Data Fig. 1a), they were unable to

1 amplify and instead rapidly went extinct, even at high initial multiplicity of infection (MOI) (Extended
2 Data Fig. 1b). Moreover, infection experiments with the temperate phage DMS3-Gm, a mutant of phage
3 DMS3 that carries a gentamycin resistance gene¹¹ which allows the selection for lysogens, revealed that
4 no lysogens were formed in the SMC4386 strain, while lysogens could be observed for the reference
5 PA14 strain (Extended Data Fig. 1c). The absence of lysogen formation in SMC4386 contrasts with
6 previous work showing efficient lysogenization on bacteria with CRISPR-Cas immunity when phages
7 carry *acr* genes^{6,11,30}.

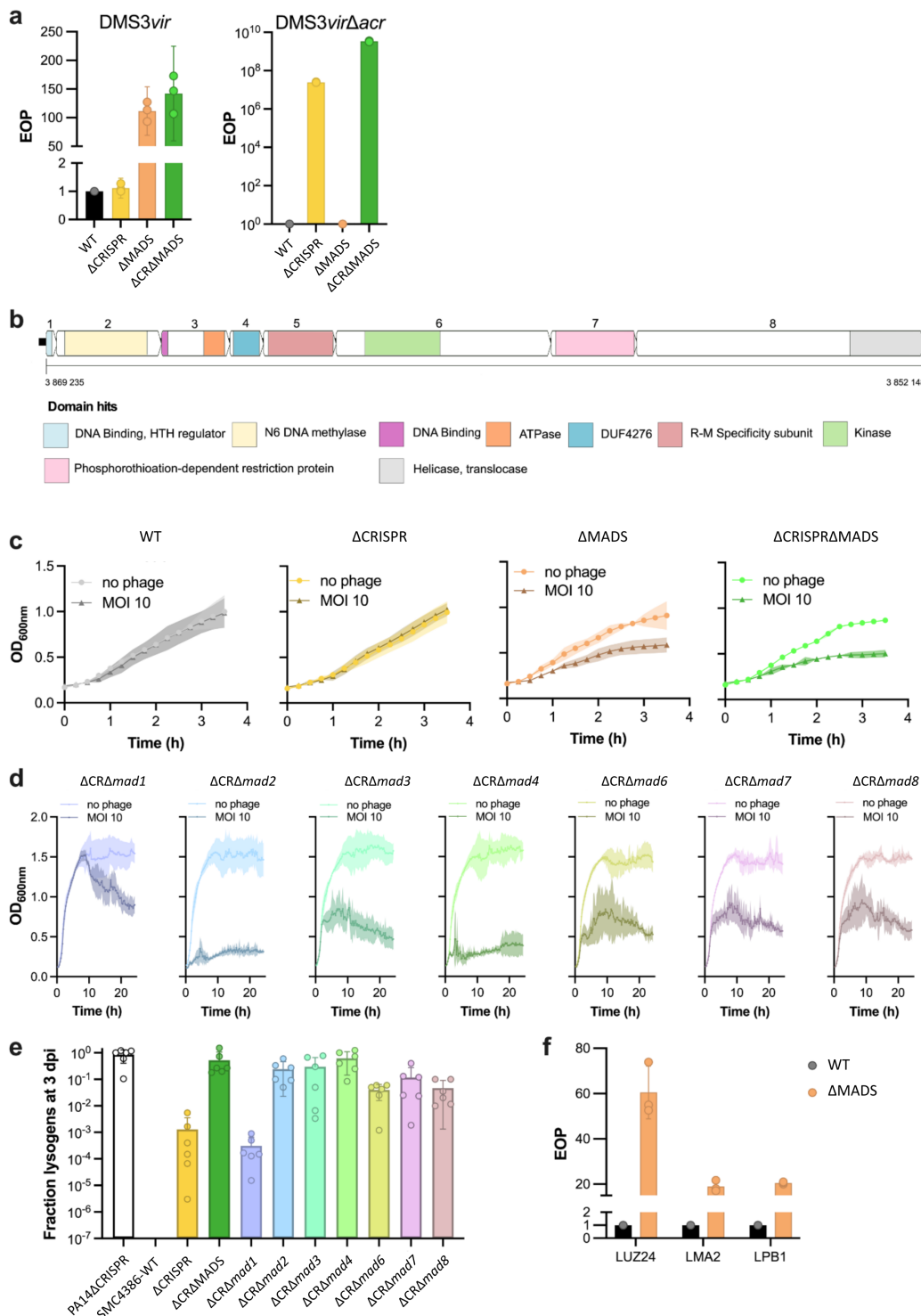
8 Previous studies have shown that Acr proteins are imperfect and vary in their strength, ranging
9 from highly effective to weak inhibitors of CRISPR-Cas^{10,11}. If AcrIE3 was a weak inhibitor of CRISPR-
10 Cas, it would explain the lack of phage amplification or lysogen formation on CRISPR immune bacteria.
11 To test this hypothesis, we compared the efficiency of plating (EOP) of phage DMS3*vir* and a phage
12 mutant lacking the *acrIE3* gene (referred to as DMS3*vir* Δ *acr*). While DMS3*vir* could form plaques on
13 SMC4386, DMS3*vir* Δ *acr* could not, supporting the hypothesis that AcrIE3 efficiently blocks the Type
14 IE CRISPR-Cas immune system of SMC4386 (Extended Data Fig. 1d). Consistent with this observation,
15 phage DMS3*vir* Δ *acr* was able to form plaques on a CRISPR-Cas deletion mutant (SMC4386 Δ CRISPR,
16 referred to as Δ CRISPR) (Extended Data Fig. 1d). Moreover, unlike DMS3*vir* Δ *acr*, we did not detect
17 an increase in DMS3*vir* EOP on the Δ CRISPR strain compared to the wildtype SMC4386 (SMC4386-
18 WT) (Fig. 1a, compare yellow and black bars). Collectively, these data suggest that AcrIE3 is an
19 effective inhibitor of the Type IE CRISPR-Cas system of *P. aeruginosa* SMC4386.

20 **A novel defence system coined MADS**

21 Based on these observations, we hypothesised that *P. aeruginosa* SMC4386 may carry additional
22 defence systems that limit DMS3 infectivity. To test this prediction, we generated a transposon (Tn)
23 mutant library of SMC4386-WT, which we then infected with DMS3-Gm. Interestingly, lysogen
24 formation was observed in the SMC4386-Tn mutant library (Extended Data Fig. 2c, yellow line), but
25 not in the SMC4386-WT strain (Extended Data Fig. 1c). PCR analysis of the DMS3 c-repressor gene
26 confirmed that 83.6% of the Gm-resistant clones within the SMC4386-Tn mutant population were
27 lysogens, and not spontaneous Gm-resistant mutants. Sanger sequencing of these lysogens revealed that
28 most of the Tn insertions were located in *cas* genes (Extended Data Fig. 2b), supporting the idea that
29 Acr proteins are imperfect and that CRISPR-Cas plays a role in blocking DMS3 lysogen formation,
30 despite the phage carrying an *acrIE3* gene. To test the hypothesis that additional genes, beyond CRISPR-
31 Cas, are involved in defence against phage DMS3, we next generated a transposon mutant library of the
32 Δ CRISPR strain. Using the same method, we identified multiple Tn insertions in a restricted genomic
33 region containing a predicted operon of 8 genes^{31,32} (Extended Data Fig. 2c). This putative operon did
34 not contain a known defence system based on PADLOC and DefenseFinder analyses^{3,33} (Supplementary
35 Table 1). However, PADLOC identified 3 genes in this operon as putative components of DNA-

1 modification systems: a kinase, a specificity subunit and a methylase (Supplementary Table 1).
2 Therefore, we hypothesised that this operon might encode a defence system that has not been previously
3 described, which we coined MADS (Methylation Associated Defence System) (Fig. 1b). Interestingly,
4 this putative new 8-gene system contains predicted domains that are also found in other bacterial defence
5 systems (see Supplementary Notes), supporting a role in defence against mobile genetic elements (MGE)
6 (Fig. 1b). To experimentally test this hypothesis, we knocked out ~22kb of the genome encompassing
7 this operon (referred to as Δ MADS). Plaque assays with phage DMS3 vir showed a 100-fold increase in
8 the EOP on Δ MADS compared to the WT strain (Fig. 1a, orange bar). Likewise, the EOP of
9 DMS3 $vir\Delta$ *acr* increases by approximately 100-fold on a double mutant Δ MADS Δ CRISPR compared to
10 Δ CRISPR (Fig. 1a, compare yellow and green bars). The observed differences in phage infectivity were
11 reflected in the suppression of bacterial growth in the presence of phages. When MADS is not present
12 (Δ CRISPR Δ MADS and Δ MADS strains), bacteria displayed normal growth in the absence of phage
13 DMS3 vir but reduced growth in its presence (Fig. 1c, orange and green curves), whereas in the presence
14 of MADS (WT and Δ CRISPR strains) bacteria grew equally well in the presence and absence of phage
15 at a MOI of 10 (Fig. 1c, black and yellow curves).

16 Having established that this operon encodes a novel defence system, we next wanted to test the
17 implication of each gene in this phenotype (*mad1-8*, Fig. 1b). We therefore generated knock-out mutants
18 of each individual gene and measured how this impacted the phage resistance. Interestingly, despite
19 repeated attempts, we were unable to delete *mad5*, unless also *mad2* or *mad3* were deleted, suggesting
20 that deletion of *mad5* alone is lethal. Infection experiments showed that individual gene deletions of
21 *mad2-4* and *mad6-8* all resulted in reduced bacterial growth in the presence of phage DMS3 vir , whereas
22 deletion of *mad1* had limited effect (Fig. 1d). Moreover, deletion of either the full system or each of the
23 individual *mad* genes resulted in a 30- to 400-fold increase in phage DMS3 lysogen formation in mutant
24 backgrounds relative to the Δ CRISPR strain, except for *mad1* (Fig. 1e). To understand the range of
25 protection offered by MADS, we carried out infection assays with diverse phages, including temperate
26 phage LPB1(*Casadabanvirus*) and lytic phages LMA2 (*Pbunavirus*) and LUZ24 (*Bruynoghevirus*). We
27 observed a similar increase (>10-fold) in the EOP of all phages in Δ MADS strain relative to the
28 SMC4386-WT (Fig. 1f). Based on these data, we conclude that the MADS system encodes a novel
29 defence system that is active against at least 4 different phages, with genes *mad2-4* and *mad6-8* being
30 essential for phage resistance.



1
2
3
4
5
6
7
8
9
10
11
12
13
14

Fig. 1 | MADS protects bacteria against phages. **a**, Efficiency of plating (EOP) of phage DMS3vir or DMS3virΔacr on strains SMC4386-WT, ΔCRISPR, ΔMADS and ΔCRISPRΔMADS. **b**, MADS is an 8-gene operon. Numbers in the top arrows correspond to gene numbering (*mad1-mad8*). Colours in bottom arrows indicate domain hits predicted with HHpred analyses and the scale indicates the position of the *mad* operon on the SMC4386 genome assembled as single chromosome (in bp). **c**, **d**, Bacterial growth curves of WT and mutant strains in absence or presence of phage DMS3vir (with multiplicity of infection, MOI, of 10). Single *mad* gene deletions are all in a ΔCRISPR background (indicated as ΔCRΔ*mad*X, with X the gene number). **e**, Fraction of the bacterial population carrying the DMS3 prophage (lysogens) in WT and mutant SMC4386 backgrounds, as indicated. ΔCR is an abbreviation for ΔCRISPR. **f**, EOP of phages LUZ24, LMA2 and LBP1 on SMC4386-WT and the isogenic ΔMADS strain. For each panel, values for individual replicates are shown (3 replicates in panels a and f, 4 replicates in c and d and 6 replicates in panel e) as well as mean values. Error bars (panels a, e, f) and shaded areas (panels c, d) show 95% confidence intervals (c.i.).

1 **Distant bacterial classes carry MADS**

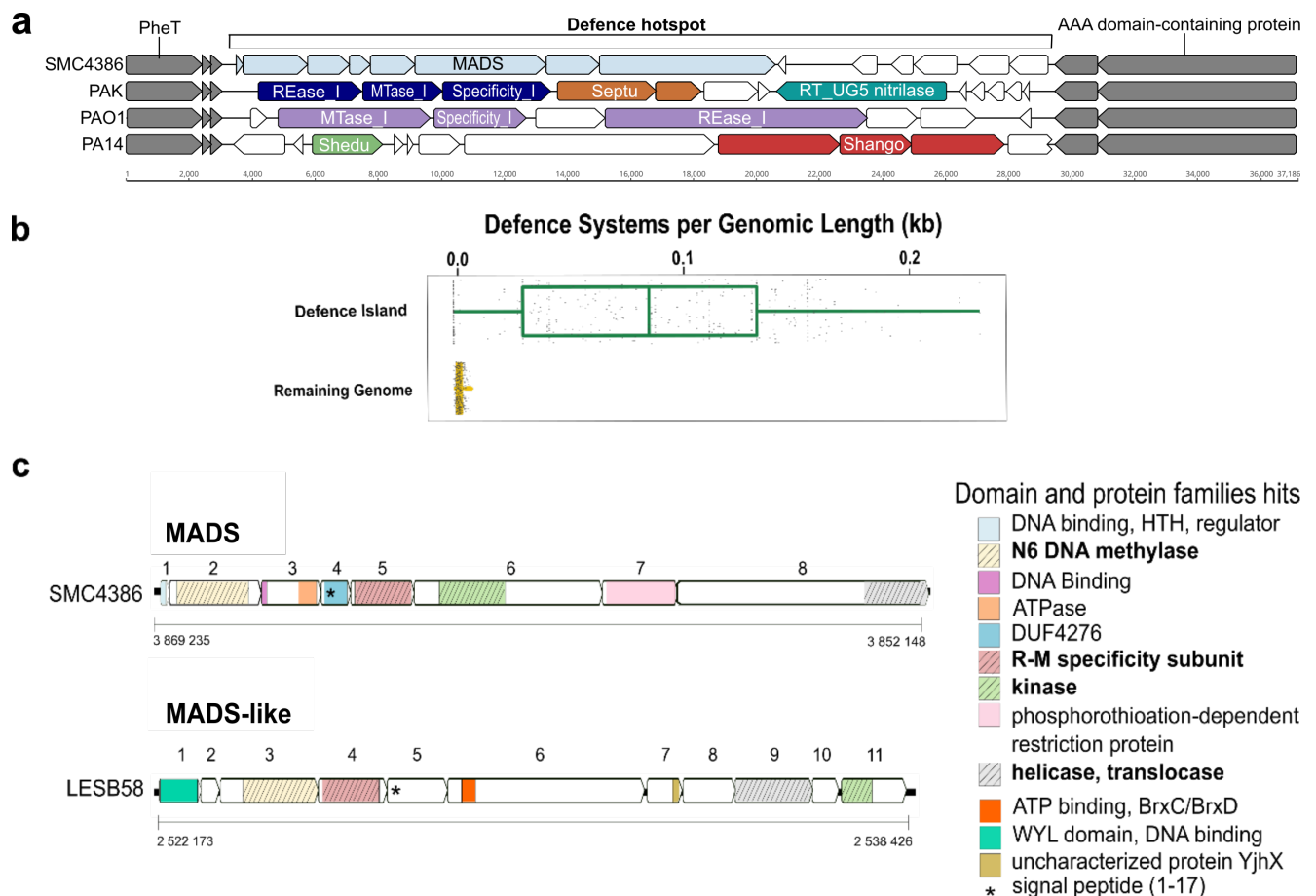
2 To determine how widespread and conserved MADS is, we built a MacSyFinder model³⁴ and searched
3 through all bacterial and archaeal genomes in the RefSeq database. We identified 422 MADS in 100
4 different species belonging to *Alpha*, *Beta*, *Gamma* and *Deltaproteobacteria*, *Actinobacteria* and
5 *Nostocales* (Extended Data Fig. 3a). The *mad1-8* operon was most commonly found in the genera
6 *Escherichia* (n=113, 27% of systems detected), *Pseudomonas* (n=71, 17%), *Ralstonia* (n=51, 12%),
7 *Streptomyces* (n=33, 8%), *Klebsiella* (n=31, 7%) and *Vibrio* (n=15, 4%) (Extended Data Fig. 3b). This
8 analysis also revealed varying levels of completeness of MADS operon, with some genes missing or
9 being detected less frequently in some bacterial genera, suggesting the existence of multiple subtypes of
10 MADS (Extended Data Fig. 3c,d). The majority of operons identified in the search contained 8 or more
11 genes, including multiple hits to the same gene type, possibly reflecting gene duplication events
12 (Extended Data Fig. 3e).

13

14 **MADS is located in a defence hotspot**

15 A deeper examination of the *P. aeruginosa* genomes containing MADS revealed that the complete
16 operon was detected in approximately 1% (66/6103) of the genomes analysed. Interestingly, manual
17 inspection of these 66 genomes led to the observation that in at least 51/66 (77%), the MADS operon
18 was located within a genomic region with conserved gene boundaries: *pheT*, a phenylalanine tRNA
19 ligase subunit beta (MPAO1_RS11510) and a histidine kinase (MPAO1_RS11445). An extended search
20 encompassing all the currently available complete *P. aeruginosa* genomes (n= 454) revealed a highly
21 conserved hotspot for *P. aeruginosa* defence systems at this location in the genome (Fig. 2a). The gene
22 boundaries were found in 97% (444/454) of the genomes analysed (Supplementary Table 2), delimiting
23 genomic islands with sizes ranging from 9.5 kb to 2402.9 kb, with an average length of 64.3 kb. For the
24 444 genomes containing the island, PADLOC³³ was used to annotate defence systems both on the
25 extracted islands (Supplementary Table 3) and on the remainder of the genome (Supplementary Table
26 3). Analysing the number of defence systems detected by PADLOC per unit of genomic length (in kb)
27 confirmed a statistically significant enrichment for defence systems on this island, with a median of 0.1
28 systems/kb in the defence island and 0.003 systems/kb in the remainder of the genome (Fig. 2b,
29 Wilcoxon's signed rank test, p<0.05). Further analysis revealed that this island contains at least one
30 defence system in 81% (358/444) and two or more defence systems in 78% (346/444) of all genomes
31 analysed, with a total of 46 different known defence systems, as well as potential novel or incomplete
32 defence systems (Extended Data Fig.4a and Supplementary Notes). Manual inspection of such systems
33 revealed a putative novel defence system related to the MADS system that we coined 'MADS-like': this
34 is a 11-gene system (numbered *mad11* to *mad111*), which was found in 10/444 islands (Fig. 2c, Extended
35 Data Fig.4b and Supplementary Notes). Interestingly, both MADS and the MADS-like are predicted to
36 encode a N6-Methyltransferase (Fig. 2c and Supplementary Notes), which suggests that self/non-self

1 discrimination relies on a methylation-based mechanism, a common strategy employed by many
 2 bacterial innate immune systems, such as Restriction-Modification, BREX and DISARM³⁵.
 3



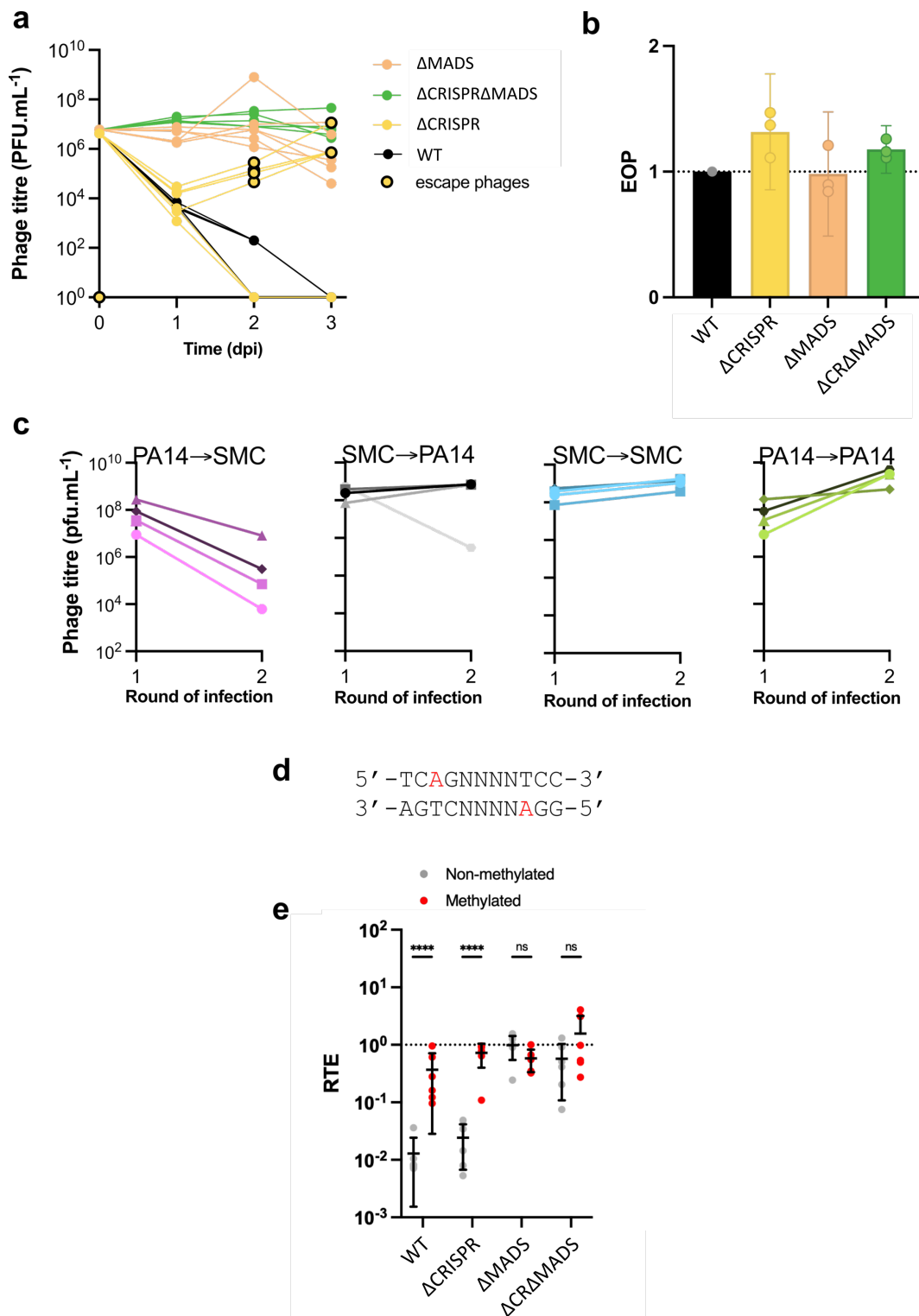
4
 5 **Fig. 2 | MADS is located in an integration hotspot for bacterial defence systems.** **a**, Composition of the
 6 genomic island in strains SMC4386, PAK, PAO1 and PA14. Conserved genes forming the boundaries of the
 7 island are indicated in grey. Coloured arrows indicate genes forming indicated defence systems. **b**, Number of
 8 defence systems per genomic length (kb) in the defence island compared to the remaining genome. Boxplots
 9 display the interquartile range, median and maximum defence systems per genomic length (kb) in the defence
 10 island and the remaining genome. Each grey dot represents density values for each isolate. **c**, Comparison of the
 11 MADS and MADS-like putative defence systems. Predicted protein domains (HHpred) are indicated with
 12 coloured boxes. Protein domains that are common between MADS and MADS-like are indicated in bold
 13 characters.
 14

15 Epigenetic phage mutants escape MADS

16 To test whether MADS uses epigenetic modification for self/non-self discrimination, we co-cultured
 17 phage DMS3*vir* and SMC4386 Δ CRISPR, and monitored whether phages could evolve to overcome
 18 MADS. When the Δ CRISPR strain was infected with phage DMS3*vir*, we noticed that in some of the
 19 replicates, the phage population amplified after 2 days of infection (Fig. 3a, yellow circles with black
 20 outline). This indicates that in the absence of CRISPR-Cas, some phages evolved to overcome MADS.
 21 Interestingly, such ‘escape’ phages did not emerge during infection of the WT strain, suggesting a
 22 synergistic effect of CRISPR-Cas and MADS that prevents the evolutionary emergence of phage escape
 23 variants (Fig. 3a, black lines). The phages that evolved to overcome MADS were isolated and their

1 infectivity was measured on different SMC4386 mutant backgrounds. This test revealed that they formed
2 plaques with equal efficiency on all genomic backgrounds (WT, Δ CRISPR, Δ MADS and
3 Δ CRISPR Δ MADS strains, Fig 3b). To test whether the modification which allowed these escape phages
4 to overcome MADS was epigenetic, we next amplified these phages successively on PA14 Δ CRISPR
5 (which lacks MADS) and on SMC8346-WT strains. We predicted that during amplification in the PA14
6 background, escape phages would lose the epigenetic modification that underpins their ability to bypass
7 MADS, and hence lose their ability to infect SMC4386-WT in a successive passage. Consistent with
8 this hypothesis, phages that replicated on PA14 Δ CRISPR had a decreased infectivity when they were
9 next passaged on the SMC4386-WT strain (Fig. 3c, PA14 \rightarrow SMC), whereas this was not the case if they
10 replicated on the SMC4386-WT strain in the previous round of infection (Fig 3c, SMC \rightarrow PA14) or if
11 they replicated on the same strain in the previous round of infection (Fig. 3c, SMC \rightarrow SMC,
12 PA14 \rightarrow PA14).

13 To corroborate these phenotypic analyses and to identify the epigenetic modification site, we
14 carried out PacBio sequencing of the escape phages and the ancestral DMS3*vir* phage. Sequencing
15 results revealed that the motif 5'-TCAGNNNTCC-3' has m6A modifications at positions 3 and 9 on
16 the positive and negative strands, respectively, in the escape phage, but not in the ancestral phage
17 genome (Fig. 3d). The phage has 7 such motifs, all of which were methylated in the escape phages.
18 Moreover, PacBio sequencing of the bacterial DNA revealed that the same motifs were methylated on
19 the bacterial chromosome in the SMC4386-WT and Δ CRISPR strains, whereas these sites were not
20 methylated in the Δ CRISPR Δ MADS, nor in the Δ CRISPR Δ mad2 strain, which encodes the predicted
21 methyltransferase. The combination of phenotypic and sequencing data therefore supports the
22 hypothesis that MADS uses a methylation-based self/non-self discrimination mechanism. To further
23 corroborate the hypothesis that MADS provides resistance against MGE with unmethylated 5'-
24 TCAGNNNTCC-3' sequence, but not against MGE with a methylated sequence, we measured the
25 transformation efficiency of methylated and unmethylated plasmids with the target sequence relative to
26 a plasmid without this sequence. Consistent with our hypothesis, a methylated plasmid carrying a 5'-
27 TCAGCGCGTCC -3' sequence had a 100-fold increased relative transformation efficiency (RTE)
28 compared to the non-methylated plasmid when recipient cells carried MADS (SMC4386-WT or
29 SMC4386 Δ CRISPR, Fig. 3e), while no differences could be observed when strains lacked MADS
30 (Δ MADS or Δ CRISPR Δ MADS). Overall, our data show that recognition of the unmethylated 5'-
31 TCAGCGCGTCC -3' sequence by MADS is required for mediating resistance against infections by
32 MGE.



1

2 **Fig. 3 | Phages escape MADS through epigenetic modification.** **a**, Titre of phage DMS3vir over 3 days post
3 infection (MOI 0,1) of strains SMC8386-WT, Δ CRISPR, Δ MADS or Δ CRISPR Δ MADS. Yellow circles with
4 black outline indicate replicates from which DMS3vir escape phage mutants were isolated. Data are shown for 6
5 individual replicates. **b**, EOP of DMS3vir escape mutants (isolated in the experiment shown in panel a) measured
6 on indicated strains. Individual and mean data are shown for 3 individual replicates. Error bars show 95%
7 confidence intervals (c.i.). **c**, Amplification patterns of DMS3vir escape mutants when successively passaged on
8 PA14 Δ CRISPR and SMC4386-WT, with the order of passaging indicated on top of the graphs. Phage titre was
9 assessed after each round of amplification using spot assay on PA14 Δ CRISPR. Each panel shows data obtained
10 with four independent escape phages (isolated in the experiment shown in panel a). **d**, Sequence of the genomic
11 site that is modified by the MADS system. Adenosines that are methylated at positions 3 and 9 on the positive
12 and negative strands (respectively) are highlighted in red. **e**, Transformation efficiency for methylated (red) or
13 unmethylated (grey) plasmid carrying a 5'-TCAGNNNTCC-3' sequence, relative to a plasmid lacking this
14 sequence.

1 CRISPR-Cas and MADS act in synergy

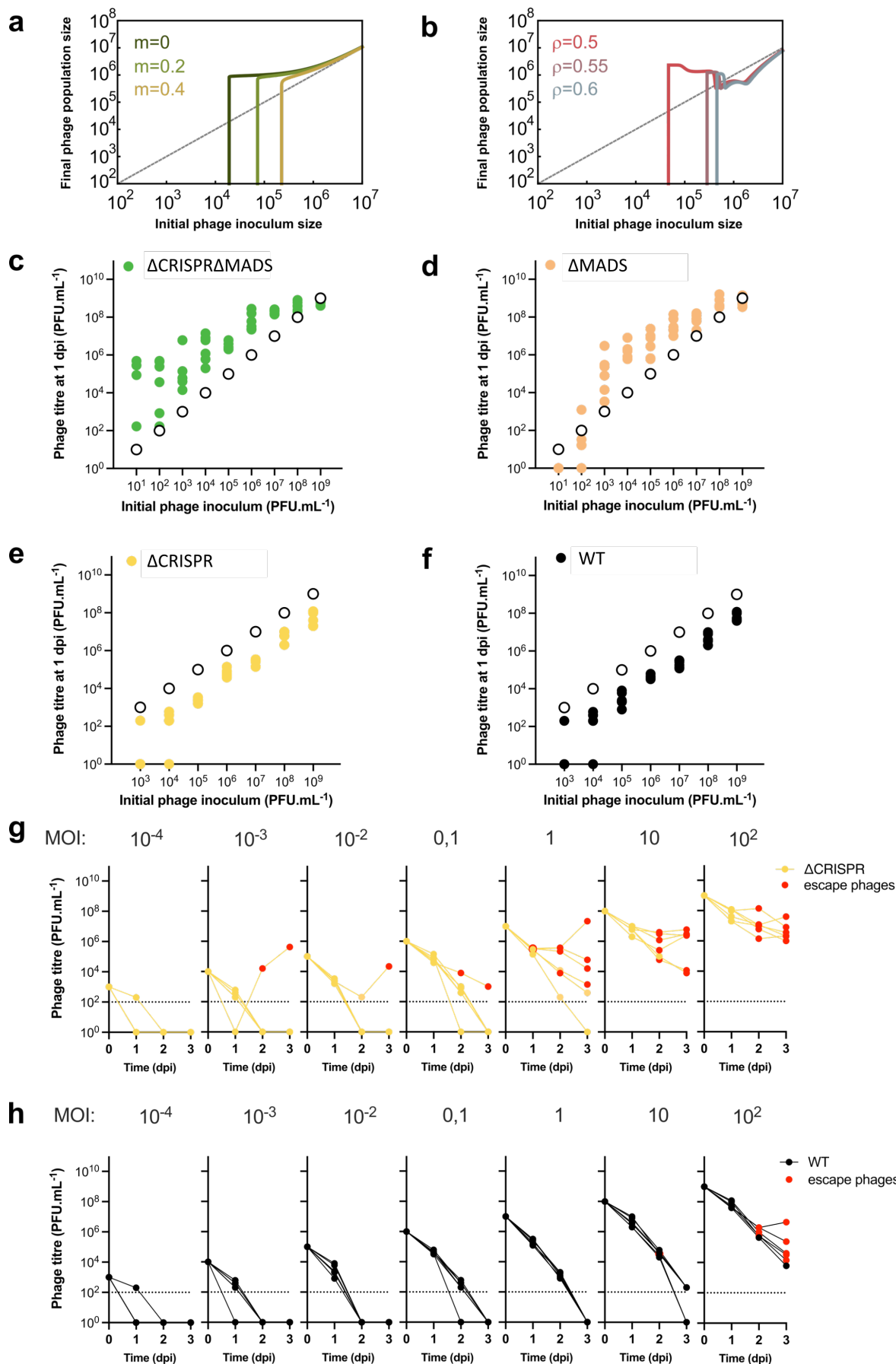
2 Given that the DMS3*vir* phage has already evolved to overcome the Type IE CRISPR-Cas system of the
3 host through the *acrIE3* gene, and that it can readily evolve to overcome MADS through the acquisition
4 of epigenetic modifications, it is unclear why the phage is unable to persist when bacteria carry both
5 defences (Fig. 3a, black lines). To explore the reasons why this may be the case, we developed a
6 mathematical model (see Extended Data Fig.5a and Methods for a detailed description of the model)
7 which builds on a previous model that considered the conditions for phage amplification in the absence
8 of phage evolution, when bacteria have CRISPR-Cas immunity and phages carry *acr* genes¹⁰. This
9 previous model assumes that protection against CRISPR immunity provided by Acr proteins is
10 imperfect, with the probability of a successful infection depending both on the level of host resistance
11 (ρ) and the efficacy of the Acr (ϕ). The model further assumes that during failed infections, some Acr
12 proteins are produced and induce an immunosuppressed state in the surviving host, which reverts back
13 to an immunocompetent state with rate γ ¹⁰. In order to understand how the combination of adaptive and
14 innate defences impacts phage persistence and evolution, we modified this model to include an
15 additional defence system that prevents phage replication with efficacy m , which phage mutants can
16 overcome through the acquisition of epigenetic modification. As we showed previously¹⁰, if $m=0$ (i.e.
17 CRISPR-Cas is the only system that provides defence), the ability of phages with *acr* genes to amplify
18 on CRISPR-Cas immune bacteria is density-dependent, with a critical threshold in phage density
19 required for phage amplification (Fig. 4a, dark green line and ref¹⁰). However, when bacteria have both
20 CRISPR and an additional innate immune system (i.e. $m>0$), the model predicts that the critical threshold
21 density required for phage amplification increases towards higher phage densities (Fig 4a). This is
22 because CRISPR-immunosuppressed cells cannot be exploited as efficiently during a secondary phage
23 infection due to the activity of the innate immune system (such as MADS). When we examine the
24 evolution of escape phages from the innate immune system using the same model, we find that the ability
25 of escape mutants to amplify depends on the levels CRISPR-Cas immunity, with the threshold phage
26 density required for phage amplification shifting to higher densities as the levels of CRISPR immunity
27 increase (increasing values of ρ in the model, Fig. 4b). This is because infections of bacteria that are
28 more resistant to immunosuppression limit the spread of epigenetic phage mutants in the population.

29 To test the model predictions, we first validated that DMS3*vir* infection causes
30 immunosuppression of the SMC4386 Type IE CRISPR-Cas system, as this assumption was based on
31 studies using the *P. aeruginosa* PA14 model that carries a Type IF CRISPR-Cas system^{10,11}. To test this,
32 we briefly pre-exposed either the SMC4386-WT or the Δ MADS strain to phage DMS3*vir*, washed away
33 all phages, followed by transformation of a CRISPR-targeted or a non-targeted plasmid³⁶. We found that
34 the transformation efficiency of the targeted plasmid, relative to the non-targeted plasmid, increased
35 following pre-exposure to phage DMS3*vir*, but not DMS3*vir* Δ *acrIE3*. This demonstrates that failed
36 infections cause bacteria to become immunosuppressed when the phage carries the *acrIE3* gene

1 (Extended Data Fig.5b). Moreover, a similar increase in the relative transformation efficiency of the
2 targeted plasmid was observed when bacteria encode only one (the Δ MADS strain) or both defence
3 systems (SMC4386-WT) (Extended Data Fig.5b). Hence, these data validate the model assumption that
4 phages carrying *acrIE3* are imperfect in their ability to by-pass CRISPR-Cas, and that failed infections
5 cause cells to enter into an immunosuppressed state.

6 Next, we performed infection assays over a broad range of initial phage inoculi to test that (i)
7 phage amplification requires higher initial phage densities when both defences are present and (ii) that,
8 in the presence of CRISPR-Cas, escape phage emergence is suppressed compared to the situation where
9 bacteria only carry MADS. This assay revealed consistent phage amplification one day post infection
10 (dpi), regardless of the initial phage inoculum, when bacteria lack both defence systems (i.e.,
11 Δ CRISPR Δ MADS) (Fig. 4c). However, when bacteria only carry the CRISPR-Cas immune system (i.e.,
12 Δ MADS), phage extinctions were observed at 1 dpi in all replicates at an initial phage inoculum of 10
13 PFU/mL and in 5 out of 6 replicates at an initial phage inoculum of 100 PFU/mL (Fig. 4d), whereas
14 phage amplification was observed at higher initial phage densities, consistent with previous observations
15 that Acr-phage amplification on CRISPR-immune bacteria depends on the initial phage density^{10,11}. In
16 contrast, when bacteria carry only MADS (i.e., Δ CRISPR) we never observed phage amplification at 1
17 dpi, even at the highest phage density (10^9 PFU/mL) (Fig. 4e). Crucially, when bacteria carry both
18 CRISPR-Cas and MADS (SMC4386-WT), we again could not observe amplification at 1 dpi across all
19 of the initial phage inoculi (Fig. 4f). This demonstrates that at 1 dpi, phages have not yet evolved to
20 overcome MADS, explaining why Acr-phages cannot amplify on WT bacteria.

21 However, we frequently observed later in the experiment that the phage population started to
22 recover, but only when bacteria carried a stand-alone MADS (Δ CRISPR) (Fig. 4g). Specifically, at 2 or
23 3 dpi of the Δ CRISPR strain we typically observed an increase in phage densities. Analysis of the
24 infectivity patterns of these phages on the different host backgrounds (WT, Δ CRISPR) revealed that this
25 increased density was due to the emergence of escape phages that had evolved to overcome MADS (Fig.
26 4g, red circles). Evolution of these escape phages during infection of the Δ CRISPR strain was identified
27 in 20 out of 42 (47%) independent experiments spanning different initial phage inoculi, from 10^4
28 PFU/mL to 10^9 PFU/mL (corresponding to MOI of 10^{-3} to 10^2). By contrast, when bacteria carried both
29 the MADS and the CRISPR-Cas systems (i.e., SMC4386-WT), analysis of the infectivity patterns of the
30 phage populations on the different host backgrounds (WT, Δ CRISPR) detected escape phages in 12%
31 of the replicates (5 out of 42) and only in experiments where the initial phage titres were very high, that
32 is 10^9 PFU/mL (MOI 10^2 , Fig. 4h, red circles). However, recovery of phage population density was only
33 observed in 1 out of these 5 replicates (Fig. 4h). Collectively, these experiments support the model
34 prediction that evolution of Acr-phages to overcome MADS is suppressed when bacteria also encode a
35 CRISPR-Cas immune system, since imperfect infectivity of Acr-phage on CRISPR-immune bacteria
36 limits both the emergence and spread of such epigenetic mutants of the phage.



1

2 **Fig. 4 | Synergy between CRISPR-Cas and MADS.** a, Final phage density for different values of MADS
 3 efficacy of resistance (m) when $\rho = 0.6$. b, Final phage density for different values of CRISPR efficacy of
 4 resistance (ρ). In both plots the initial density of resistant cells is $K/2$. Other parameter values: $m = 0.8$, $r =$
 5 1 , $\gamma = 20$, $\phi = 0.4$, $B = 5$, $a = 0.001$, $d = 0.001$, $\lambda = 1$, $\mu = 0.0001$, $K = 10^6$. c-f, DMS3vir titre at 1 dpi
 6 upon infection of strains that (c, d) lack or (e, f) carry MADS. Empty circles show initial phage titres and coloured

1 dots show titre at 1 dpi. **g-h**, Titre of phage DMS3*vir* over 3 days upon infection of strains (**g**) SMC4386 Δ CRISPR
2 and (**h**) SMC4386-WT. Each graph shows infection experiments starting with initial phage concentrations varying
3 from 10^3 to 10^9 PFU/mL (with 10-fold increments) corresponding to initial MOIs ranging from 10^{-4} to 10^2 . Red
4 circles highlight replicates where escape phages could be detected. All panels show individual data for 6
5 independent replicates.

6

7 **Discussion**

8 For the past few years, new defence systems have been discovered at unprecedented rates, suggesting
9 that many more remain to be uncovered. These discoveries have mainly been based on computational
10 “guilt-by-association” approaches which take advantage of the fact that defence genes often cluster
11 together in bacterial and archaeal genomes in so-called “defence islands”^{14,17,23}. Anti-phage genes are
12 also frequently identified in MGE, where they form hotspots of genetic variation within the MGE^{37–39}.
13 In addition, these MGE tend to integrate at preferential locations in bacterial genomes, known as
14 integration hotspots. Therefore, systematic mapping of integration hotspots and careful analyses of their
15 gene content is becoming a valuable strategy for the discovery of the full repertoire of bacterial defence
16 systems^{40–43}. We now understand that bacteria encode many more defence systems than previously
17 thought, and that individual bacterial genomes typically contain multiple defences. However, how these
18 defences interact at the molecular, transcriptional and phenotypic levels, and how this shapes bacteria-
19 phage coevolution remains largely unclear.

20 Here, we identify a new defence system that we named MADS in a genomic locus that is a
21 hotspot for defence systems. MADS uses N6-methyladenosine modification of a specific recognition
22 sequence to discriminate self from non-self DNA. We found that a bacterial strain that encodes MADS
23 alone suppresses phage DMS3*vir* densities but only transiently as phages can readily acquire epigenetic
24 modifications to escape immunity mediated by MADS. Interestingly, when bacteria also carried
25 CRISPR-Cas immunity, phage escape evolution was rarely observed, despite the phage carrying an anti-
26 CRISPR gene that blocks the CRISPR-Cas immune system of the host. Mathematical modelling explains
27 why this synergy between the two defence systems emerges. It has previously been shown that phage
28 carrying *acr* genes need to cooperate in order to overcome CRISPR immunity of their host bacteria, and
29 this in turn causes amplification only if the initial phage densities are sufficiently high^{10,11}. Cooperation
30 is needed because initial infections of CRISPR immune bacteria by Acr-phages often fail, due to phage
31 genomes being detected and destroyed by CRISPR immune complexes before they are inactivated by
32 the Acr proteins. However, some Acr proteins will have been produced, and although the initial infection
33 was unsuccessful, the cell enters an immunosuppressed state that can be exploited in a secondary
34 infection (Extended Data Fig. 6). The probability that this cell will be re-infected by another Acr-phage
35 increases with phage density, explaining the critical tipping point in Acr-phage density beyond which
36 phage amplification is observed. However, in the presence of a second layer of defence, such as MADS,
37 these cells with a suppressed CRISPR-Cas immune system are unavailable for phage replication. To

1 exploit these cells, phages first need to acquire the epigenetic modification to overcome MADS. The
2 presence of CRISPR-Cas immunity limits the evolution of Acr-phage mutants that escape MADS, and
3 even if phage mutants arise, they cannot spread as efficiently as they would in the absence of CRISPR-
4 Cas immunity (Extended Data Fig. 6). Based on our understanding of the synergy between CRISPR-
5 Cas and MADS upon infection with Acr-phages, we expect that similar synergistic interactions may
6 occur between CRISPR-Cas and other innate immune systems. Future work will be needed to test this
7 hypothesis, and if validated, to understand if and how the activity of these systems is coordinated to
8 provide an optimal anti-phage response.

9 Collectively, our study sheds light on how multi-layered defence systems can shape bacteria-
10 phage interactions, and shows that the coexistence of CRISPR-Cas and MADS impairs the successful
11 deployment of phage counter-defence strategies by interfering with phage cooperation. Specifically, the
12 presence of MADS reduces the infection success of immunosuppressed bacteria by Acr-phages, whereas
13 the presence of the CRISPR immune system limits the emergence and spread of epigenetic mutants of
14 the phage that overcome MADS. A more detailed understanding of the interactions between multi-
15 layered defences and the counter-defences encoded by phages will be key to predict and manipulate
16 bacteria-phage interactions in natural and clinical settings.

17

18 **Acknowledgments**

19 A.M. was supported by funding from a PhD studentship sponsored by the College of Life and
20 Environmental Sciences (CLES, University of Exeter), and the Centre for Environment, Fisheries and
21 Aquaculture Science (CEFAS). This work was supported by a grant from the ERC (ERC-STG-2016-
22 714478 - EVOIMMECH), which was awarded to E.R.W. A.C. received funding from the European
23 Union's Horizon 2020 research and innovation programme under the Marie Skłodowska-Curie grant
24 agreement No 834052 and from IdEx Université Paris Cité (ANR 18 IDEX 0001). K. B. and C.C. drew
25 on funding from the MRC MR/R020787/1. S.v.H. acknowledges funding from the Biotechnology and
26 Biological Sciences Research Council (BB/S017674/1). The authors thank Dr. L. Zhang for his support
27 in optimizing the protocol for arbitrary PCR, Dr. D. Walker-Sünderhauf for assistance in generating the
28 transposon-mutant library, Dr. B. Watson for contributing to phage DNA isolation, Dr. A. Bernheim for
29 feedback on building macromolecular models to detect MADS, E. Cenraud for DefenseFinder analyses,
30 Prof. Bondy-Denomy for kindly providing phage DMS3-Gm, Prof. R. Lavigne and Dr. J. Wagemans
31 for kindly providing phages LPB1, LMA2 and LUZ24, Prof. O'Toole for kindly providing phage
32 DMS3_{vir} and strain *P. aeruginosa* UCBPP-PA14 *csy3::lacZ*, and Prof. Davidson for kindly providing
33 strain SMC4386.

34

35 **Declaration of interests**

36 A.M., A.C. and E.R.W. are inventors on patent GB2303034.9.

1 **Authors contributions**

2 Conceptualization, A.M., A.C. and E.R.W.; Methodology, A.M., E.P., C.C., S.G, K.B., A.C., and
3 E.R.W.; Investigation A.M., E.P., C.C., S.G, R.C., B.J.P., M.C., A.G., S.P., K.B., S.v.H., A.C. and
4 E.R.W.; Formal Analysis, A.M., E.P., C.C., S.G, S.P., K.B., A.C., and E.R.W.; Mathematical Modelling,
5 S.G; Writing – Original Draft, A.M., A.C. and E.R.W.; Writing – Review & Editing, A.M., A.C. and
6 E.R.W. with contributions from E.P., C.C., S.G., R.C., B.J.P., M.C., S.P., K.B., S.v.H.; Supervision,
7 A.C. and E.R.W.; Funding Acquisition, E.R.W.

8 9 **Methods**

10 All experiments were carried out in six biological replicates unless otherwise specified.

11 12 **Bacterial strains**

13 *P. aeruginosa* UCBPP-PA14 *csy3::lacZ* (referred to as PA14 Δ CRISPR, since it carries a disruption of
14 an essential *cas* gene that causes the CRISPR-Cas system to be non-functional), was grown overnight at
15 28°C or 37°C in LB broth. *P. aeruginosa* SMC4386 (referred to as SMC4386-WT), and deletion mutants
16 of this strain (referred to as Δ CRISPR, Δ MADS, Δ CRISPR Δ MADS, Δ mad1, Δ mad2, Δ mad3, Δ mad4,
17 Δ mad6, Δ mad7, Δ mad8) were grown at 28°C or 37°C in either LB broth or M9 medium (22 mM
18 Na₂HPO₄; 22 mM KH₂PO₄; 8.6 mM NaCl; 20 mM NH₄Cl; 1 mM MgSO₄; 0.1 mM CaCl₂) supplemented
19 with 0.2% glucose. *E. coli* MFDpir was used as donor to build the transposon mutant library, *E. coli*
20 DH5 α was used to assemble the allelic exchange vectors for the gene deletions, and *E. coli* S17.1 λ pir
21 was used as donor strain to deliver the allelic exchange vectors to recipient cells during conjugation
22 assays. Whenever applicable, media was supplemented with ampicillin (100 μ g/mL), streptomycin (50
23 μ g/mL), or gentamicin (either 30 μ g/mL, when selecting for *E. coli*, or 50 μ g/mL, when selecting for *P.*
24 *aeruginosa*) to ensure plasmid maintenance. *E. coli* MFDpir was cultured in the presence of
25 diaminopimelic acid (DAP) (0.3 mM).

26 27 **Phage strains**

28 Recombinant temperate phage DMS3-Gm, which encodes a gentamycin resistance gene, was used to
29 enable selection of lysogens following infection of WT and mutant SMC4386 strains as well as the
30 transposon mutant library. Phage DMS3vir, which is obligately lytic due to the deletion of the c-
31 repressor gene, and/or phage DMS3vir Δ acrIE3, which lacks both the c-repressor gene and the anti-
32 CRISPR gene that blocks the Type I E CRISPR-Cas system of strain SMC4386, were used in all other
33 experiments, and have been described previously^{28,44}. Lytic phages LMA2, LUZ24 and temperate phage
34 LPB1 were used in spot assays to determine the range of resistance conferred by MADS. Phage stocks

1 were extracted from lysates prepared on *P. aeruginosa* PA14 Δ CRISPR or SMC4386 Δ CRISPR and
2 stored at 4°C.

4 **Adsorption assay**

5 The measurement of phage adsorption was performed according to Kropinsky, 2009⁴⁵ with some
6 modifications. Briefly, 9 mL of *P. aeruginosa* SMC4386-WT and PA14 Δ CRISPR culture (OD₆₀₀=0.25)
7 were infected with 2x10⁶ plaque forming units (PFU)/mL of phage DMS3*vir*. Every 6 min for 1h, an
8 aliquot of 100 μ L was taken from each vial and transferred into a chilled Eppendorf tube containing 800
9 μ L of LB broth and 100 μ L of chloroform. Extracted phages were serially diluted and spotted onto a
10 lawn of *P. aeruginosa* PA14 Δ CRISPR to determine the phage titre. The experiment was carried out in
11 a water bath, at 28°C and with 100 rounds per minute (rpm) agitation.

13 **Efficiency of Plaquing (EOP) assays**

14 EOP assays were carried out on square polystyrene plates containing LB with 1.5% agar. A mixture of
15 molten soft LB agar (0.5%) and 300 μ L of bacteria (grown overnight in LB broth) were poured on top
16 of the hard agar layer and allowed to set. Next, 5 μ L of serially diluted phage were spotted on the
17 resulting plates, which were subsequently incubated overnight at 28°C and plaque forming units (PFUs)
18 were enumerated the next day. The EOP was determined as the ratio of the number of PFUs on a mutant
19 *P. aeruginosa* SMC4386 and the *P. aeruginosa* SMC4386-WT strains. To be able to calculate the EOP
20 with DMS3*vir* Δ *acr*, we arbitrarily set the phage titre on *P. aeruginosa* SMC4386-WT at 1 PFU/mL
21 (instead of 0).

23 **Generation of the transposon (Tn)-mutant library**

24 To generate the transposon-mutant library we used the synthetic construct pBAM (born-again-mini-
25 transposon) described by García et al., 2011⁴⁶. Specifically, we utilised the vector pBAMD1-4⁴⁷, which
26 delivers the Tn5 while conferring resistance to streptomycin to the target cells at the same time, allowing
27 for selection of transconjugants. The pBAMD1-4 vector was delivered to the recipient bacteria via
28 conjugation using the *E. coli* MFD*pir* strain as donor cell, following previously described methods⁴⁸.
29 Briefly, we separately incubated 15 mL of *E. coli* MFD*pir* donor cells and recipients (*P. aeruginosa*
30 SMC4386-WT and SMC4386 Δ CRISPR strains), which were incubated overnight at 37°C with agitation
31 at 180 rpm. Recipients were grown in LB broth, while donors were grown in LB broth supplemented
32 with DAP (0.3mM), ampicillin (100 μ g/mL) and streptomycin (50 μ g/mL). The following day, 10 mL
33 of each strain was pelleted and washed twice with 10 mL of M9 salts saline solution. Bacterial cultures
34 were pelleted again and resuspended in 10 mL of LB supplemented with 0.3 mM DAP. Donors and
35 recipient were mixed together (7500 μ L donor: 500 μ L recipient), pelleted and resuspended in 1 mL of
36 M9 saline solution. To allow for conjugation between donor and recipient, 100 μ L of mix was spotted

1 onto 10 individual Binder-Free Glass Microfiber 1.2 μ M filter papers (Whatman) which were placed
2 onto a squared LB agar plate supplemented with DAP (0.3mM), and incubated at 28°C for 48h. Cells
3 from each filter were then recovered into LB supplemented with streptomycin (to kill the non-
4 transconjugants), pelleted, washed twice (resuspended first in 1 mL and then in 100 μ L) and plated onto
5 an LB agar plate supplemented with streptomycin to select for the transconjugants. Plates were incubated
6 for 24-48h at 28°C. For each recipient strain, an *E. coli* MFD π donor strain without plasmid was used
7 as negative control. Based on pilot data that yielded around 1000 transconjugants, this procedure was
8 carried out in 10 independent biological replicates, which were pooled during the last step in order to
9 obtain a saturated Tn mutant library.

10

11 **Measuring frequencies of lysogeny**

12 ***Lysogeny in PA14 Δ CRISPR, SMC4386 and derivative knockouts strains***

13 Cultures were grown overnight at 37°C with 180 rpm agitation, in 6 mL of LB broth. Cultures were then
14 diluted 1:100 into fresh LB broth and infected with phage DMS3-Gm⁴⁹ at an MOI of 0.01. After 24h,
15 samples were serially diluted, plated onto selective (LBA with Gm) and non-selective (LBA) agar plates
16 and incubated overnight at 28°C. Colonies were enumerated the next day. The proportion of lysogens
17 was expressed as the number of CFU (Colony Forming Units) grown on selective plates divided by the
18 number of CFU on non-selective media.

19

20 ***Lysogeny in the Tn5 mutant library***

21 The transconjugants (see **Generation of the transposon (Tn)-mutant library** for details on how they
22 were obtained) were scraped off LBA plates, pooled, and resuspended in 10 mL of LB broth and then
23 infected with 10⁵ PFU of phage DMS3-Gm, followed by overnight incubation at 28°C with agitation at
24 180 rpm.

25 Each day and for 3 days, 1 mL of the culture was transferred into 10 mL of fresh LB broth, the phages
26 were extracted to monitor phage titre and bacteria were plated onto non-selective LBA as well as LBA
27 supplemented with streptomycin (selecting for Tn mutants) or both streptomycin and gentamicin
28 (selecting for Tn mutants carrying the DMS3-Gm prophage). Plates were incubated at 28°C for 24-48h.
29 Lysogenization of bacterial colonies on LBA with streptomycin and gentamicin was confirmed by
30 colony PCR using primers Crep_F (forward, 5'- GCGGAATGAGCGCTAAACC-3') and Crep_R
31 (reverse, 5'- CAAGTGCTTTAGCGAGGAATGC-3'), that amplify the c-repressor gene of phage
32 DMS3.

33

34 **Localization of the Tn5 insertions**

35 Before being subjected to arbitrary PCR (described below), we verified using colony PCR that the clones
36 of interest carried the miniTn5 insertion using the primer pairs PS5 (5'-CCCTGCTTCGGGGTCATT-

1 3') and PS4 (5'-CCAGCCTCGCAGAGCAGG-3'), and PS5 and PS6 (5'-
2 GGACAAATCCGCCGCCCT-3'), using cells carrying the plasmid pBAMD1-4 as a positive control.
3 Both primer pairs amplify the *oriT* region of the plasmid, leading to a product size of 225 bp and 665 bp
4 respectively. Only in case of absence of *oriT* amplification we proceeded with the arbitrary PCR. Next,
5 we applied a protocol of arbitrary PCR to identify the location of Tn5 insertions, based on the methods
6 described by García et al., 2014⁴⁷ and Saavedra et al., 2017⁵⁰. In the first round of arbitrary PCR we used
7 the forward primer ME-O-Sm-Ext-F (5'- CTTGGCCTCGCGCGCAGATCAG-3') and the reverse
8 primer ARB6 (5'- GGCACGCGTCGACTAGTACNNNNNNNNNNACGCC-3'), while in the second
9 round of arbitrary PCR we used the forward primer ME-O-Sm-Int-F (5'-
10 CACCAAGGTAGTCGGCAAAT-3') and the reverse primer ARB2 (5'-
11 GGCACGCGTCGACTAGTAC-3'). We followed the PCR conditions that have been previously
12 described⁴⁷. Since all the transconjugants are different from one another (i.e., the Tn5 is in different
13 location in the bacterial genome), some PCR conditions, such as the annealing temperature, work for
14 some clones but not for others. Therefore, for clones where we did not obtain clear and definite bands
15 after the second round, we adjusted the protocol as follows: in the first round the number of cycles
16 increased from 30 to 35 and/or the annealing temperature gradually increased to a maximum of 38°C; in
17 the second round the annealing temperature increased to 52°C. PCR products obtained after the second
18 round of arbitrary PCR were gel purified and sent for Sanger sequencing (Eurofins Genomics UK
19 Limited, Wolverhampton, UK). The chromatogram derived from the Sanger sequencing was mapped
20 against the genome of *P. aeruginosa* SMC4386-WT using Geneious v10.2.6 to identify the genes where
21 the transposon was inserted.

22

23 **Generation of gene knockouts**

24 The deletion of CRISPR-Cas and MADS systems, as well as the deletion of single genes from MADS
25 were carried out using two-step allelic exchange, as described by Hmelo et al., 2015⁵¹. The homologous
26 sequences flanking either side of the desired target system and/or gene were synthesized by Integrated
27 DNA Technology (IDT™) or PCR amplified and fused together via SOE-PCR^{52,53}, and then cloned into
28 the pDONRPEX18Gm donor vector via Gateway cloning. The resulting allelic exchange vector was
29 transformed into chemically competent *E. coli* DH5α and verified by PCR. Vectors were then
30 electroporated into competent *E. coli* S17-1λpir to allow for conjugation with *P. aeruginosa* SMC4386-
31 WT recipient strains⁵¹. The merodiploids that were obtained were selected on cetrимide agar plates (to
32 select for *P. aeruginosa*) supplemented with gentamicin (50 µg/mL). Every genomic deletion was
33 confirmed by colony PCR, first by positive amplification of the knockout junction, and then by negative
34 amplification of the left and right side of the intact system and/or gene, followed by Sanger sequencing
35 (Eurofins Genomics UK Limited, Wolverhampton, UK). The list of primers used to generate and screen
36 the knockout strains are listed in Supplementary Table 4.

1

2 **Bioinformatic analysis of the distribution of MADS**

3 *Analysis of protein domains and HMM profiles*

4 MADS locus protein sequences were determined from genome annotations made using Prokka v1.14.6,
5 which uses Prodigal to predict protein regions. These proteins were searched against the pfam (protein
6 family) database, as well as Phyre2 and HHpred, to perform HMM-HMM matching-based remote
7 homology detection and obtain structural predictions^{54,55}. Curated alignments for each gene were
8 constructed by identifying homologues for each protein sequence using HHpred. A probability cut-off
9 score of 50% was set, with default parameters for all other options, searching against the PDB database.
10 Alignments extracted from HHpred outputs (max 250 sequences) were then used to generate profile-
11 HMMs using the *hmmbuild* function from HMMER v3.0. For further investigations of remote
12 homology, HHpred was run against the PDB, COG, NCBI conserved domains and Pfam-A databases.

13

14 **Genomes**

15 A total of 172,366 bacterial and archaeal RefSeq assemblies (retrieved January 2022 using ncbi-genome-
16 download, <https://github.com/kblin/ncbi-genome-download/>) were downloaded for use in prevalence
17 analysis.

18

19 **Macromolecular models for MADS**

20 MacSyFinder v2, a tool for macromolecular systems detection⁵⁶, was used to develop models for MADS.
21 This tool requires the specification of mandatory or accessory components within the system, which are
22 not biological definitions but rather describe whether a protein is easy to detect or more divergent and
23 thus harder to detect with a single HMM profile, as well as whether components are frequently missing
24 from systems.

25 After making sure that no known anti-phage systems could be identified by PADLOC⁵⁷ and
26 DefenseFinder⁵⁸ within the MADS operon (Supplementary Table 1), genomes were retrieved in genbank
27 (.gbff) format and ordered protein fasta files were created by extracting the CDS features using SeqIO
28 from Biopython. Initial models with various levels of system completeness and genomic distance
29 between components were tested. Initially, all *P. aeruginosa* RefSeq genomes (n=6,103) were searched.
30 Next, preliminary tests, and manual inspection of hits from a subset of the entire Bacterial and Archaeal
31 RefSeq dataset (n=15,000), the following model parameters were set. Proteins MAD6, 7 and 8 were
32 defined as mandatory and their presence was required for the system to be detected. Proteins MAD1, 2
33 and 5 were defined as accessory due to their homology to Restriction-Modification system components
34 and widespread regulators, which could lead to false positive hits if made mandatory. Finally, proteins
35 MAD3 and 4 were also classified as accessory, due to them not being reliably detected in all systems.
36 In addition, the maximum inter gene distance was set to 10.

1

2 ***Taxonomic distribution and plots***

3 Species classifications for genomes with MADS were retrieved using the Entrez python module.
4 Taxonomic trees were retrieved from NCBI using the ete3 v3.1.2 module, and used to visualise the
5 phylogenetic distribution of MADS. Other plots were created in R, with operons plotted using gggenes.
6 Additional editing of plots was performed using Inkscape v1.2.

7

8 ***Reproducibility and computational resources***

9 The University of Exeter's Advanced Research Computing Facilities were used to carry out for this
10 bioinformatics analysis. A Snakemake pipeline was used to run MacSyFinder searches on all genomes,
11 whilst the remaining analyses were carried out using R v4.0.4 and Python version 3.9.7 with Biopython
12 v1.79. All scripts used for this analysis are available at <https://github.com/elliekpurse/Maestri>.

13

14 ***Bioinformatic analysis of defence islands***

15 A total of 454 publicly available complete *P. aeruginosa* genomes were included in the assessment of
16 the putative defence island (Supplementary Table 2). Defence islands were extracted from genomes by
17 first examining the BLASTx percentage identity and genome coordinates against relevant query
18 reference sequences of the distinct gene boundaries pheT (MPAO1_RS11510) and a histidine kinase
19 (MPAO1_RS11445)⁵⁹. FASTA sequence files of defence islands were extracted from complete genome
20 FASTA files using BEDTools v2.29.2 getfasta and subtract, based upon BLASTx genome coordinates⁶⁰.
21 Prokka v1.14.6 was used to annotate defence islands and the remainder of the genome⁶¹. Defence
22 systems in all sequence files were identified using using PADLOC⁵⁷ and DefenseFinder⁵⁸, both with
23 additional CRISPR array detection. Wilcoxon's signed rank testing was used to determine enrichment
24 for defence systems on the island and was performed using R v4.1.3. Manual inspection of the defence
25 hotspots containing MADS was carried out using Geneious v10.2.6

26

27 ***Growth curves***

28 Growth curves to assess the role of MADS during infection with phage DMS3vir were performed in 96-
29 well plates with agitation at 37°C. Briefly, overnight cultures of WT and mutant strains of *P. aeruginosa*
30 SMC4386 grown in LB media at 37°C with agitation at 180 rpm were diluted 100-fold into fresh LB
31 media and grown until cultures reached mid-log phase (OD600 nm of 0.3, approximately 10⁸ CFU/mL).
32 One mL of each mid-log culture was centrifuged for 3 min at 6000 rpm to remove the supernatant and
33 the pellets were infected with 1 mL of DMS3vir at an MOI of 10 in LB and incubated for 10 min at 37°C
34 whilst shaking at 180 rpm. After initial incubation to synchronise the infection, 200 µL of the infected
35 cultures were transferred to a 96-well plate, then 20 µL of mineral oil were added on the surface of each
36 well to avoid evaporation and bacterial growth was measured by optical density at 600 nm (OD600) for

1 24h at 37°C with agitation in a BioTek Synergy 2 plate reader. At t=0 200 µL samples were used to
2 quantify initial bacteria CFU/mL and phage titre PFU/mL. Growth measurements in the absence of
3 phage were carried out in parallel as a control.

4

5 **Analysis of MADS self/non-self discrimination**

6 ***Infection assays in liquid medium***

7 Infection assays to measure the population dynamics of phage DMS3vir in the presence or absence of
8 MADS were performed in glass vials by inoculating 6 mL M9 medium supplemented with 0.2% glucose
9 with approximately 5×10^7 CFU bacteria from fresh overnight cultures (also grown in M9 medium +
10 0.2% glucose) of either *P. aeruginosa* SMC4386-WT strain or the isogenic Δ CRISPR, Δ MADS or
11 Δ CRISPR Δ MADS strains. Cultures were infected at MOI 0.1 and 10, incubated at 37°C while shaking
12 at 180 rpm and transferred daily (1:100 dilution) for three days into fresh medium. Phages were
13 chloroform extracted (1:10 volume) every day and their titres measured via spot test assay onto a lawn
14 of the sensitive *P. aeruginosa* PA14 Δ CRISPR strain. Plates were incubated overnight at 28°C. We
15 monitored whether phages in these experiments evolved to overcome bacterial defence systems, and
16 whether this was due to genetic or epigenetic mutations. To this end, we performed plaque-purification
17 of phages from the SMC4386 lawns using chloroform extractions, and phage were titrated on lawns of
18 SMC4386-WT and PA14 Δ CRISPR strains. These phages were then used in a next round of parallel
19 infections on SMC4386-WT or PA14 Δ CRISPR strains as hosts, at 28°C in glass vials containing 6mL
20 of LB broth, while shaking at 180 rpm. Phages were chloroform extracted again, and titrated on both
21 strains. This process was repeated for another round of infection, to understand the heritability of the
22 escape phenotype of the phage.

23

24 ***Phage and bacteria DNA extraction for sequencing***

25 For phage DNA extraction the 4 replicate experiments of DMS3vir that during infection assays with *P.*
26 *aeruginosa* SMC4386 Δ CRISPR (referred to as Δ CRISPR) gained the capability to amplify after 2 days
27 of infection (see Fig.3a), were amplified on Δ CRISPR and Δ CRISPR Δ mad2, which is the mutant lacking
28 the predicted methylase, while the ancestral DMS3vir was amplified on Δ CRISPR Δ MADS. To this end,
29 500 µL of bacteria from a fresh overnight culture were inoculated into 50 mL of LB broth and mixed
30 with 100 µL of an approximately 1×10^8 PFU phage stock. Those infected cultures were grown overnight
31 in 50 mL of broth at 28°C, 180 rpm. The resulting viscous cultures were centrifuged at 25,000 xg and
32 phages were found to have concentrated in the pellet. The pellet was resuspended with 5 mL of phosphate
33 buffered saline (PBS) and centrifuged at 21,000 xg to remove bacterial cells. Phages were concentrated
34 from the supernatant using 0.5 mL 100kDa Amicon spin filters as per the manufacturers guidelines and
35 retained in the filters. Whilst still in the filter, phages were washed twice with DNase I buffer (up to 400
36 µL), treated with DNase I as per the manufacturers guidelines, washed twice with RNase buffer (up to

1 400 μ L), treated with RNase A as per the manufacturers guidelines, washed twice with RNase buffer
2 (up to 400 μ L) and eluted from the Amicon filters by inversion and centrifugation with RNase buffer
3 (up to 400 μ L) to give a final volume for each phage solution of 400 μ L. Phage DNA was extracted
4 using a proteinase K lysis step (20 μ g of proteinase K, 0.5% SDS, 20mM EDTA pH 8.0) for 1 h at 60
5 $^{\circ}$ C followed by 2 phenol:chloroform extractions (1:1 volume, inversion and centrifugation), DNA was
6 precipitated using sodium acetate (1/10 volume, 3M, pH 7.5 and ethanol (2.5 volume, 100%, ice-cold)
7 overnight at -20 $^{\circ}$ C. DNA was pelleted (30min, 20,000 xg, 4 $^{\circ}$ C) and washed twice with ice-cold 70%
8 ethanol, dried and resuspended in TE buffer.

9
10 For bacterial DNA extraction (*P. aeruginosa* SMC4386-WT, SMC4386 Δ CRISPR,
11 SMC4386 Δ CRISPR Δ MADS, SMC4386 Δ CRISPR Δ mad2) bacteria were pelleted from overnight
12 culture and DNA was extracted using the phenol chloroform method outlined previously. Quality
13 Control and quantification of bacteria and phage DNA was performed with NanoDrop, Qubit and
14 agarose gel electrophoresis; 2 μ g of DNA were used for Pacific Biosciences (PacBio) sequencing
15 (Centre For Genomic Research, Liverpool, UK).

16

17 ***PacBio sequencing***

18 Barcoded SMRT-Bell PacBio libraries were created from each DNA sample and run on a SMRT cell in
19 CLR mode on a Sequel IIe platform, yielding >300,000x coverage for phage samples and 1,400 – 2,200x
20 coverage for bacterial samples. The PacBio SMRT-Link v10.0 analysis pipeline
21 (<https://www.pacb.com/support/software-downloads/>) was used to demultiplex samples, to detect
22 methylation signals based on polymerase kinetics, and to identify motifs associated with methylation,
23 all under default parameters. Resulting diagnostic plots and gff files were inspected manually. Output
24 files, including logs, are available at https://github.com/scottishwormboy/Maestri_pbio. The genome
25 reference used for DMS3 was NC_008717.1. For SMC4386, the PacBio reads were used to create a new
26 genome reference (accession: PRJNA905210) from the wild-type, using SMRT-Link v10.0 for
27 microbial assembly.

28

29 **CRISPR immunosuppression assay**

30 CRISPR immunosuppression assays were performed as previously described^{36,53}. This assay relies on
31 transformation of *P. aeruginosa* SMC4386 cells with plasmid pHERD30T (non-targeted by the
32 SMC4386 CRISPR-Cas system) and pHERD30T-cr2sp1-SMC (targeted by SMC4386 CRISPR-Cas
33 system). Briefly, the pHERD30T-cr2sp1-SMC plasmid was constructed by inserting a 32 nucleotide
34 protospacer matching the 1st spacer of CRISPR array 2 of the *P. aeruginosa* SMC4386 strain, flanked
35 by the AAG Protospacer Adjacent Motif (PAM). Oligonucleotides containing the PAM and protospacer
36 sequence (5'-agcttAAGAACCTCTACGAGCAGACCGAGTTGAAAGGGCAg-3' and 5'-

1 aattcTGCCCTTTCAACTCGGTCTGCTCGTAGAGGTTCTTa-3', restriction sites overhangs are
2 indicated in small caps, protospacer in capitals and PAM underlined) were annealed to create overhangs
3 compatible with HindIII and EcoRI, phosphorylated by T4 Polynucleotide Kinase and ligated in EcoRI-
4 HindIII digested pHERD30T vector. Cultures of *P. aeruginosa* SMC4386-WT and isogenic Δ CRISPR,
5 Δ MADS and Δ CRISPR Δ MADS strains grown overnight in 50 mL of LB medium (approximately $3.5 \times$
6 10^9 CFU/mL) were divided in three 50 mL tubes with 10 mL of culture in each. Cells were either non-
7 infected or infected using a final density of 10^9 PFU/mL (MOI=0.3) of DMS3vir or DMS3vir Δ acrIE3.
8 After 2h of incubation at 37°C with agitation at 180 rpm, cells were harvested by centrifugation at 3500
9 rpm for 15 minutes. A sample of the supernatant was kept for phage titration by spot assay to validate
10 homogeneity of the phage titre across the replicates. Cells were made electrocompetent by washing them
11 twice with 1 mL of 300 mM sucrose solution at room temperature and resuspended in 300 μ L of the
12 same solution. A 100 μ L sample of the resuspended cells was taken to evaluate the bacterial density.
13 The remaining 200 μ L were equally divided across two vials and electroporated with 500 ng of either
14 pHERD30T or pHERD30T-cr2sp1-SMC, followed by addition of 700 μ L fresh LB medium. After
15 incubating for 1h at 37°C at 180 rpm, bacteria were pelleted, resuspended in 100 μ L of LB medium and
16 serially diluted in LB-medium. Fifty microliters of each dilution were spotted on LB agar plates
17 containing Gentamycin (50 μ g/mL) and incubated overnight at 37°C to allow transformants to grow.
18 Relative transformation efficiency was calculated as the number of colonies obtained after
19 transformation with pHERD30T-cr2sp1-SMC divided by the number of colonies obtained after
20 transformation with pHERD30T.

21

22 **Plasmid transformation assay**

23 This assay was adapted from the CRISPR immunosuppression assay to fit the MADS. It relies on
24 transformation of *P. aeruginosa* SMC4386 cells with plasmid pHERD30T (non-targeted by the
25 SMC4386 MADS) and pHERD30T-M24 (targeted by SMC4386 MADS). Briefly, the pHERD30T-M24
26 plasmid was constructed by inserting a 11 nucleotide MADS target sequence (5'-TCAGCGCGTCC-3').
27 Oligonucleotides containing the target sequence (5'-agcttTCAGCGCGTCCg-3' and 5'-
28 aattcGGACGCGCTGAa-3', restriction sites overhangs are indicated in small caps and target sequence
29 in capitals) were annealed to create overhangs compatible with HindIII and EcoRI, phosphorylated by
30 T4 Polynucleotide Kinase and ligated in EcoRI-HindIII digested pHERD30T vector. Each of the two
31 plasmids were then transformed in either *P. aeruginosa* SMC4386 Δ CRISPR Δ MADS or isogenic
32 Δ CRISPR Δ mad3. These transformed strains were then used for plasmid production, which were purified
33 with GeneJET Plasmid Midiprep kit (Thermo Scientific, USA) according to the manufacturer's
34 instructions. Plasmid produced in *P. aeruginosa* SMC4386 Δ CRISPR Δ MADS were called pHERD30T-
35 Nonmeth and pHERD30T-M24-Nonmeth, while plasmids produced in *P. aeruginosa*
36 SMC4386 Δ CRISPR Δ mad3 were called pHERD30T-Meth and pHERD30T-M24-Meth.

1 Cultures of *P. aeruginosa* SMC4386-WT and isogenic Δ CRISPR, Δ MADS and Δ CRISPR Δ MADS
2 strains grown overnight in 20 mL of LB medium (approximately 3.5×10^9 CFU/mL) were harvested by
3 centrifugation at 3500 rpm for 15 minutes. Cells were made electrocompetent by washing them twice
4 with 2 mL of 300 mM sucrose solution at room temperature and resuspended in 500 μ L of the same
5 solution. A 100 μ L sample of the resuspended cells was taken to evaluate the bacterial density. The
6 remaining 400 μ L were equally divided across four vials and electroporated with 500 ng of either
7 pHERD30T-Nonmeth, pHERD30T-M24-Nonmeth, pHERD30T-Meth or pHERD30T-M24-Meth,
8 followed by addition of 700 μ L fresh LB medium. After incubating for 1h at 37°C at 180 rpm, bacteria
9 were pelleted, resuspended in 100 μ L of LB medium and serially diluted in LB-medium. Fifty
10 microliters of each dilution were spotted on LB agar plates containing Gentamycin (50 μ g/mL) and
11 incubated overnight at 37°C to allow transformants to grow. Relative transformation efficiency of
12 methylated or non-methylated plasmids (respectively) were calculated as the number of colonies
13 obtained after transformation with pHERD30T-M24-Nonmeth or pHERD30T-M24-Meth divided by
14 the number of colonies obtained after transformation with pHERD30T-Nonmeth or pHERD30T-Meth,
15 respectively.

16

17 **Phenotypic interactions between CRISPR-Cas and MADS**

18 ***Tipping-point assay***

19 Infection assays were performed in glass vials by inoculating 6 mL M9 medium supplemented with
20 0.2% glucose with approximately 10^7 CFU bacteria from fresh overnight cultures (also grown in M9
21 medium + 0.2% glucose) of the *P. aeruginosa* SMC4386-WT strain and the isogenic Δ CRISPR,
22 Δ MADS and Δ CRISPR Δ MADS strains. To these vials, phage DMS3vir was added at a MOI of 10^{-4} , 10^{-3} ,
23 10^{-2} , 10^{-1} , 1, 10^1 , or 10^2 , and incubated at 37°C while shaking at 180 rpm. Cultures were transferred
24 daily (1:100 dilution) for three days into fresh M9 medium. For the *P. aeruginosa* SMC4386 Δ MADS
25 and the SMC4386 Δ CRISPR Δ MADS strains we performed additional infections at MOI 10^{-5} and MOI
26 10^{-6} for seven days. Phages were chloroform extracted every day and the titres were measured using spot
27 assays onto lawns of each of the four different bacterial strains (i.e., *P. aeruginosa* SMC4386-WT,
28 Δ CRISPR, Δ MADS and Δ CRISPR Δ MADS strains). Plates were incubated overnight at 28°C.

29 To identify replicate experiments in which phage mutants had emerged that escape MADS, we
30 determined for each phage sample the EOP ratio's on *P. aeruginosa* SMC4386 Δ CRISPR Δ MADS and
31 either the Δ CRISPR or WT bacteria. For WT DMS3vir phages, these ratios are 127 ± 17 and 142 ± 33
32 (mean \pm 95% c.i.), respectively. For clonal phage populations of DMS3vir escape mutants (carrying the
33 epigenetic modification to overcome MADS), these ratios are $0,91 \pm 0,15$ and $1,18 \pm 0,12$ (mean \pm 95%
34 c.i.), respectively. We therefore applied a conservative threshold of EOP=5 (i.e. corresponding to \pm 20%
35 escape mutants in the phage population) to identify samples that contained significant numbers of

1 MADS escape phages. Replicates where escape phages were detected are depicted as red circles in
2 Figure 4 g, h.

4 **Mathematical modelling**

5 *Epidemiological dynamics (no phage evolution)*

6 We develop a model to understand the dynamics of bacteriophages in a multiresistant bacteria
7 population. Earlier studies have examined the evolution of Acr in well-mixed environments^{44,62}. Here,
8 we explore how the addition of a second resistance could affect the dynamics.

9 Extended Data Fig.5a shows a schematic representation of the phage life cycle (where we assume that
10 bacteria are initially CRISPR resistant to the phage). The Acr-phage is able to infect resistant bacteria
11 with a probability $1 - \rho$, where ρ is a measure of CRISPR efficiency. These infections can either lead
12 in (i) the production of immunosuppressed cells with probability $r(1 - \phi)$, where r is another measure
13 of CRISPR efficiency and ϕ is a measure of anti-CRISPR efficiency, or (ii) they can result in cell lysis
14 and the release of B virions with probability $(1 - r(1 - \phi))(1 - m)$, where m is a measure of MADS
15 efficiency.

16 This yields the following system of ordinary differential equations (where $N = R + S$):

$$\begin{aligned}
 \frac{dR}{dt} &= \lambda R \left(1 - \frac{N}{K}\right) - aV(1 - \rho) \left(1 - (1 - e)m(1 - r(1 - \phi))\right) R - dR + \gamma S \\
 \frac{dS}{dt} &= a(1 - \rho)r(1 - \phi)RV - aV(1 - (1 - e)m)S - dS - \gamma S \\
 \frac{dV}{dt} &= \left(aB \left((1 - \rho)(1 - (1 - e)m)(1 - r(1 - \phi))R + (1 - (1 - e)m)S\right) - aN\right)V
 \end{aligned} \tag{1}$$

18 The change in the total density of virus V at the beginning of an epidemic where $S = 0$ and $N = R$:

$$\frac{dV}{dt} = aN(B(1 - \rho)(1 - (1 - e)m)(1 - r(1 - \phi)) - 1)V$$

22 In other words, the phage population can grow only when:

$$\phi > \phi_0 = \frac{1}{B(1 - \rho)(1 - (1 - e)m)r} - \frac{1 - r}{r}$$

25 Yet, if one introduces a large density of phages in the host population they will immunosuppress a
26 fraction S/N of the cells. This will yield the following threshold

27

$$\phi > \phi_0 - \frac{S}{R} (B(1 - (1 - e)m) - 1) \left(\phi_0 + \left(\frac{1 - r}{r} \right) \right)$$

In other words, we recover the results of ref⁶² (in the case where $m = 0$) and extend it to the case where bacteria carry the MADS resistance. The above expression shows that increasing m always increases the threshold density of viruses above which the epidemic can take off (see Fig. 4a).

Evolutionary dynamics of the phage (MADS escape)

In the following we consider an alternative model where the phage can acquire an epigenetic mutation allowing the virus to escape MADS (i.e., the parameter $e = 1$ for the escape mutant):

$$\begin{aligned} \frac{dR}{dt} &= rR \left(1 - \frac{N}{K} \right) - a(1 - \rho)R \left((1 - (1 - e)m(1 - r(1 - \phi)))V + V^e \right) - dR + \gamma S \\ \frac{dS}{dt} &= a(1 - \rho)r(1 - \phi)R(V + V^e) - a \left((1 - (1 - e)m)V + V^e \right) S - (d + \gamma)S \\ \frac{dV}{dt} &= \left(aB(1 - (1 - e)m) \left((1 - \rho)(1 - r(1 - \phi))R + S \right) - aN \right) V - \mu V \\ \frac{dV^e}{dt} &= \left(aB \left((1 - \rho)(1 - r(1 - \phi))R + S \right) - aN \right) V^e + \mu V \end{aligned} \quad (2)$$

We use this model to explore what happens if we allow some mutation to occur between V and V^e (i.e., $\mu = 0.0001$), showing that the tipping point for phage amplification shifts to higher initial phage densities as the strength of CRISPR immunity increases (see Fig 4b).

Another way to formalise the evolution of escape mutation (focusing on the frequency f^e of the mutant) where f^e is the frequency of the mutated virus:

$$f^e = \frac{V^e}{V^T}$$

with $V^T = V^e + V$ and:

$$\frac{dV^T}{dt} = \left(aB \left((1 - \rho)(1 - r(1 - \phi))R + S \right) (1 - (1 - f^e)(1 - e)m) - aN \right) V^T$$

In other words, the phage population V^T can only grow when:

$$\phi > \phi_0 = \frac{1}{B(1 - \rho)(1 - (1 - f^e)(1 - e)m)r} - \frac{1 - r}{r}$$

Yet, if one introduces a large density of phages in the host population they will immunosuppress a fraction S/N of the cells. This will yield the following threshold

1
2
3
4
5
6
7
8
9
10
11
12
13
14
15
16
17
18
19
20
21
22
23
24
25

$$\phi > \phi_0 - \frac{S}{R} (B(1 - (1 - f^e)(1 - e)m) - 1) \left(\phi_0 + \left(\frac{1 - r}{r} \right) \right)$$

The change in mutant frequency is:

$$\frac{df^e}{dt} = \underbrace{f^e(1 - f^e)}_{\text{genetic variance}} \underbrace{aB \left((1 - \rho)(1 - r(1 - \phi))R + S \right)}_{\text{coefficient of selection}} (1 - e)m \quad (2)$$

The equation (2) captures what parameters govern the speed at which the mutant virus is expected to increase in frequency. In particular, higher m (stronger MADS), higher ϕ (stronger Acr), lower ρ or r (less effective CRISPR resistance, i.e., lower numbers of spacers in the CRISPR array) promote the evolution of the mutant virus. Besides, the parameter γ may also affect the strength of selection via its effect on the quantity of R cells. When γ is large, the immunosuppressed cells recover their immunity very fast, the density R increases which favors the increase in V^e frequency.

Data availability

Source data associated with main figures and Extended Data Figures will be provided prior publication. Ordinary differential equations generated for mathematical modelling are included in Methods. Sequencing data have been deposited in NCBI under the BioProject accession number PRJNA905210.

Code availability

Bacterial and archaeal RefSeq assemblies and scripts used to carry out bioinformatic analyses are publicly available as indicated in Methods and Supplementary Tables.

1 **References**

- 2 1. Tal, N., and Sorek, R. (2022). SnapShot: Bacterial immunity. *Cell* *185*, 578-578.e1.
3 10.1016/j.cell.2021.12.029.
- 4 2. Millman, A., Melamed, S., Leavitt, A., Doron, S., Bernheim, A., Hör, J., Lopatina, A., Ofir, G.,
5 Hochhauser, D., Stokar-Avihail, A., et al. (2022). An expanding arsenal of immune systems that
6 protect bacteria from phages (*Microbiology*) 10.1101/2022.05.11.491447.
- 7 3. Tesson, F., Hervé, A., Mordret, E., Touchon, M., d'Humières, C., Cury, J., and Bernheim, A.
8 (2022). Systematic and quantitative view of the antiviral arsenal of prokaryotes. *Nat. Commun.* *13*,
9 2561. 10.1038/s41467-022-30269-9.
- 10 4. Tesson, F., and Bernheim, A. (2023). Synergy and regulation of antiphage systems: toward the
11 existence of a bacterial immune system? *Curr. Opin. Microbiol.* *71*, 102238.
12 10.1016/j.mib.2022.102238.
- 13 5. Spoerel, N., Herrlich, P., and Bickle, T. (1979). A novel bacteriophage defence mechanism: the
14 anti-restriction protein. *Nature* *278*, 30–34. <https://doi.org/10.1038/278030a0>.
- 15 6. Bondy-Denomy, J., Pawluk, A., Maxwell, K.L., and Davidson, A.R. (2013). Bacteriophage genes
16 that inactivate the CRISPR/Cas bacterial immune system. *Nature* *493*, 429–432.
17 10.1038/nature11723.
- 18 7. Huiting, E., Athukoralage, J., Guan, J., Silas, S., Carion, H., and Bondy-Denomy, J. (2022).
19 Bacteriophages antagonize cGAS-like immunity in bacteria (*Microbiology*)
20 10.1101/2022.03.30.486325.
- 21 8. Hobbs, S.J., Wein, T., Lu, A., Morehouse, B.R., Schnabel, J., Leavitt, A., Yirmiyya, E., Sorek, R.,
22 and Kranzusch, P.J. (2022). Phage anti-CBASS and anti-Pycsar nucleases subvert bacterial
23 immunity. *Nature* *605*, 522–526. 10.1038/s41586-022-04716-y.
- 24 9. Ho, P., Chen, Y., Biswas, S., Canfield, E., and Feldman, D.E. (2022). Bacteriophage anti-defense
25 genes that neutralize TIR and STING immune responses (*Microbiology*)
26 10.1101/2022.06.09.495361.
- 27 10. Landsberger, M., Gandon, S., Meaden, S., Rollie, C., Chevallereau, A., Chabas, H., Buckling, A.,
28 Westra, E.R., and van Houte, S. (2018). Anti-CRISPR Phages Cooperate to Overcome CRISPR-
29 Cas Immunity. *Cell* *174*, 908-916.e12. 10.1016/j.cell.2018.05.058.
- 30 11. Borges, A.L., Zhang, J.Y., Rollins, M.F., Osuna, B.A., Wiedenheft, B., and Bondy-Denomy, J.
31 (2018). Bacteriophage Cooperation Suppresses CRISPR-Cas3 and Cas9 Immunity. *Cell* *174*, 917-
32 925.e10. 10.1016/j.cell.2018.06.013.
- 33 12. Chevallereau, A., Pons, B.J., van Houte, S., and Westra, E.R. (2022). Interactions between
34 bacterial and phage communities in natural environments. *Nat. Rev. Microbiol.* *20*, 49–62.
35 10.1038/s41579-021-00602-y.
- 36 13. Dimitriu, T., Szczelkun, M.D., and Westra, E.R. (2020). Evolutionary Ecology and Interplay of
37 Prokaryotic Innate and Adaptive Immune Systems. *Curr. Biol.* *30*, R1189–R1202.
38 10.1016/j.cub.2020.08.028.
- 39 14. Doron, S., Melamed, S., Ofir, G., Leavitt, A., Lopatina, A., Keren, M., Amitai, G., and Sorek, R.
40 (2018). Systematic discovery of antiphage defense systems in the microbial pangenome. *Science*
41 *359*, eaar4120. 10.1126/science.aar4120.

- 1 15. Cohen, D., Melamed, S., Millman, A., Shulman, G., Oppenheimer-Shaanan, Y., Kacen, A., Doron,
2 S., Amitai, G., and Sorek, R. (2019). Cyclic GMP–AMP signalling protects bacteria against viral
3 infection. *Nature* 574, 691–695. 10.1038/s41586-019-1605-5.
- 4 16. Millman, A., Bernheim, A., Stokar-Avihail, A., Fedorenko, T., Voichkek, M., Leavitt, A.,
5 Oppenheimer-Shaanan, Y., and Sorek, R. (2020). Bacterial Retrons Function In Anti-Phage
6 Defense. *Cell* 183, 1551-1561.e12. 10.1016/j.cell.2020.09.065.
- 7 17. Gao, L., Altae-Tran, H., Böhning, F., Makarova, K.S., Segel, M., Schmid-Burgk, J.L., Koob, J.,
8 Wolf, Y.I., Koonin, E.V., and Zhang, F. (2020). Diverse enzymatic activities mediate antiviral
9 immunity in prokaryotes. *Science* 369, 1077–1084. 10.1126/science.aba0372.
- 10 18. Tal, N., Morehouse, B.R., Millman, A., Stokar-Avihail, A., Avraham, C., Fedorenko, T., Yirmiya,
11 E., Herbst, E., Brandis, A., Mehlman, T., et al. (2021). Cyclic CMP and cyclic UMP mediate
12 bacterial immunity against phages. *Cell* 184, 5728-5739.e16. 10.1016/j.cell.2021.09.031.
- 13 19. Bernheim, A., Millman, A., Ofir, G., Meitav, G., Avraham, C., Shomar, H., Rosenberg, M.M., Tal,
14 N., Melamed, S., Amitai, G., et al. (2021). Prokaryotic viperins produce diverse antiviral
15 molecules. *Nature* 589, 120–124. 10.1038/s41586-020-2762-2.
- 16 20. Makarova, K.S., Wolf, Y.I., Snir, S., and Koonin, E.V. (2011). Defense Islands in Bacterial and
17 Archaeal Genomes and Prediction of Novel Defense Systems. *J. Bacteriol.* 193, 6039–6056.
18 10.1128/JB.05535-11.
- 19 21. Makarova, K.S., Wolf, Y.I., and Koonin, E.V. (2013). Comparative genomics of defense systems
20 in archaea and bacteria. *Nucleic Acids Res.* 41, 4360–4377. 10.1093/nar/gkt157.
- 21 22. Oliveira, P.H., Touchon, M., and Rocha, E.P.C. (2014). The interplay of restriction-modification
22 systems with mobile genetic elements and their prokaryotic hosts. *Nucleic Acids Res.* 42, 10618–
23 10631. 10.1093/nar/gku734.
- 24 23. Bernheim, A., and Sorek, R. (2020). The pan-immune system of bacteria: antiviral defence as a
25 community resource. *Nat. Rev. Microbiol.* 18, 113–119. 10.1038/s41579-019-0278-2.
- 26 24. Picton, D.M., Luyten, Y.A., Morgan, R.D., Nelson, A., Smith, D.L., Dryden, D.T.F., Hinton,
27 J.C.D., and Blower, T.R. (2021). The phage defence island of a multidrug resistant plasmid uses
28 both BREX and type IV restriction for complementary protection from viruses. *Nucleic Acids Res.*
29 49, 11257–11273. 10.1093/nar/gkab906.
- 30 25. Dupuis, M.-È., Villion, M., Magadán, A.H., and Moineau, S. (2013). CRISPR-Cas and restriction-
31 modification systems are compatible and increase phage resistance. *Nat. Commun.* 4, 2087.
32 10.1038/ncomms3087.
- 33 26. Hynes, A.P., Villion, M., and Moineau, S. (2014). Adaptation in bacterial CRISPR-Cas immunity
34 can be driven by defective phages. *Nat. Commun.* 5, 4399. 10.1038/ncomms5399.
- 35 27. Maguin, P., Varble, A., Modell, J.W., and Marraffini, L.A. (2022). Cleavage of viral DNA by
36 restriction endonucleases stimulates the type II CRISPR-Cas immune response. *Mol. Cell* 82, 907-
37 919.e7. 10.1016/j.molcel.2022.01.012.
- 38 28. Cady, K.C., Bondy-Denomy, J., Heussler, G.E., Davidson, A.R., and O’Toole, G.A. (2012). The
39 CRISPR/Cas Adaptive Immune System of *Pseudomonas aeruginosa* Mediates Resistance to
40 Naturally Occurring and Engineered Phages. *J. Bacteriol.* 194, 5728–5738. 10.1128/JB.01184-12.

- 1 29. Pawluk, A., Bondy-Denomy, J., Cheung, V.H.W., Maxwell, K.L., and Davidson, A.R. (2014). A
2 New Group of Phage Anti-CRISPR Genes Inhibits the Type I-E CRISPR-Cas System of
3 *Pseudomonas aeruginosa*. *mBio* 5, e00896-14. 10.1128/mBio.00896-14.
- 4 30. Rollie, C., Chevallereau, A., Watson, B.N.J., Chyou, T., Fradet, O., McLeod, I., Fineran, P.C.,
5 Brown, C.M., Gandon, S., and Westra, E.R. (2020). Targeting of temperate phages drives loss of
6 type I CRISPR–Cas systems. *Nature* 578, 149–153. 10.1038/s41586-020-1936-2.
- 7 31. Taboada, B., Estrada, K., Ciria, R., and Merino, E. (2018). Operon-mapper: a web server for
8 precise operon identification in bacterial and archaeal genomes. *Bioinformatics* 34, 4118–4120.
9 10.1093/bioinformatics/bty496.
- 10 32. Coppens, L., and Lavigne, R. (2020). SAPPHERE: a neural network based classifier for $\sigma 70$
11 promoter prediction in *Pseudomonas*. *BMC Bioinformatics* 21, 415. 10.1186/s12859-020-03730-z.
- 12 33. Payne, L.J., Meaden, S., Mestre, M.R., Palmer, C., Toro, N., Fineran, P.C., and Jackson, S.A.
13 (2022). PADLOC: a web server for the identification of antiviral defence systems in microbial
14 genomes. *Nucleic Acids Res.* 50, W541–W550. 10.1093/nar/gkac400.
- 15 34. Abby, S.S., Néron, B., Ménager, H., Touchon, M., and Rocha, E.P.C. (2014). MacSyFinder: A
16 Program to Mine Genomes for Molecular Systems with an Application to CRISPR-Cas Systems.
17 *PLoS ONE* 9, e110726. 10.1371/journal.pone.0110726.
- 18 35. Hampton, H.G., Watson, B.N.J., and Fineran, P.C. (2020). The arms race between bacteria and
19 their phage foes. *Nature* 577, 327–336. 10.1038/s41586-019-1894-8.
- 20 36. Pons, B.J., Westra, E.R., and van Houte, S. (2023). Determination of Acr-mediated
21 immunosuppression in *Pseudomonas aeruginosa*. *MethodsX* 10, 101941.
22 10.1016/j.mex.2022.101941.
- 23 37. Hussain, F.A., Dubert, J., Elsherbini, J., Murphy, M., VanInsberghe, D., Arevalo, P., Kauffman,
24 K., Rodino-Janeiro, B.K., Gavin, H., Gomez, A., et al. (2021). Rapid evolutionary turnover of
25 mobile genetic elements drives bacterial resistance to phages. *Science* 374, 488–492.
26 10.1126/science.abb1083.
- 27 38. Rousset, F., Dowding, J., Bernheim, A., Rocha, E.P.C., and Bikard, D. (2021). Prophage-encoded
28 hotspots of bacterial immune systems (*Microbiology*) 10.1101/2021.01.21.427644.
- 29 39. Fillol-Salom, A., Rostøl, J.T., Ojiogu, A.D., Chen, J., Douce, G., Humphrey, S., and Penadés, J.R.
30 (2022). Bacteriophages benefit from mobilizing pathogenicity islands encoding immune systems
31 against competitors. *Cell* 185, 3248-3262.e20. 10.1016/j.cell.2022.07.014.
- 32 40. Johnson, M.C., Laderman, E., Huiting, E., Zhang, C., Davidson, A., and Bondy-Denomy, J.
33 (2022). Core Defense Hotspots within *Pseudomonas aeruginosa* are a consistent and rich source of
34 anti-phage defense systems. 2022.11.11.516204. 10.1101/2022.11.11.516204.
- 35 41. Vassallo, C.N., Doering, C.R., Littlehale, M.L., Teodoro, G.I.C., and Laub, M.T. (2022). A
36 functional selection reveals previously undetected anti-phage defence systems in the *E. coli*
37 pangenome. *Nat. Microbiol.* 7, 1568–1579. 10.1038/s41564-022-01219-4.
- 38 42. Hochhauser, D., Millman, A., and Sorek, R. (2022). The defence island repertoire of the
39 *Escherichia coli* pan-genome (*Microbiology*) 10.1101/2022.06.09.495481.
- 40 43. Benler, S., Faure, G., Altae-Tran, H., Shmakov, S., Zhang, F., and Koonin, E. (2021). Cargo Genes
41 of Tn7-Like Transposons Comprise an Enormous Diversity of Defense Systems, Mobile Genetic
42 Elements, and Antibiotic Resistance Genes. *12*, 20.

- 1 44. Chevallereau, A., Meaden, S., Fradet, O., Landsberger, M., Maestri, A., Biswas, A., Gandon, S.,
2 van Houte, S., and Westra, E.R. (2020). Exploitation of the Cooperative Behaviors of Anti-
3 CRISPR Phages. *Cell Host Microbe* 27, 189-198.e6. 10.1016/j.chom.2019.12.004.
- 4 45. Clokie, M.R.J., and Kropinski, A.M. eds. (2009). *Bacteriophages* (Humana Press) 10.1007/978-1-
5 60327-164-6.
- 6 46. Martínez-García, E., Calles, B., Arévalo-Rodríguez, M., and de Lorenzo, V. (2011). pBAM1: an
7 all-synthetic genetic tool for analysis and construction of complex bacterial phenotypes. *BMC*
8 *Microbiol.* 11, 38. 10.1186/1471-2180-11-38.
- 9 47. Martínez-García, E., Aparicio, T., de Lorenzo, V., and Nikel, P.I. (2014). New Transposon Tools
10 Tailored for Metabolic Engineering of Gram-Negative Microbial Cell Factories. *Front. Bioeng.*
11 *Biotechnol.* 2. 10.3389/fbioe.2014.00046.
- 12 48. Ferrières, L., Hémerly, G., Nham, T., Guérout, A.-M., Mazel, D., Beloin, C., and Ghigo, J.-M.
13 (2010). Silent Mischief: Bacteriophage Mu Insertions Contaminate Products of *Escherichia coli*
14 Random Mutagenesis Performed Using Suicidal Transposon Delivery Plasmids Mobilized by
15 Broad-Host-Range RP4 Conjugative Machinery. *J. Bacteriol.* 192, 6418–6427. 10.1128/JB.00621-
16 10.
- 17 49. Borges, A.L., Zhang, J.Y., Rollins, M.F., Osuna, B.A., Wiedenheft, B., and Bondy-Denomy, J.
18 (2018). Bacteriophage Cooperation Suppresses CRISPR-Cas3 and Cas9 Immunity. *Cell* 174, 917-
19 925.e10. 10.1016/j.cell.2018.06.013.
- 20 50. Saavedra, J.T., Schwartzman, J.A., and Gilmore, M.S. (2017). Mapping Transposon Insertions in
21 Bacterial Genomes by Arbitrarily Primed PCR. *Curr. Protoc. Mol. Biol.* 118. 10.1002/cpmb.38.
- 22 51. Hmelo, L.R., Borlee, B.R., Almblad, H., Love, M.E., Randall, T.E., Tseng, B.S., Lin, C., Irie, Y.,
23 Storek, K.M., Yang, J.J., et al. (2015). Precision-engineering the *Pseudomonas aeruginosa* genome
24 with two-step allelic exchange. *Nat. Protoc.* 10, 1820–1841. 10.1038/nprot.2015.115.
- 25 52. Horton, R.M., Hunt, H.D., Ho, S.N., Pullen, J.K., and Pease, L.R. (1989). Engineering hybrid
26 genes without the use of restriction enzymes: gene splicing by overlap extension. *Gene* 77, 61–68.
27 10.1016/0378-1119(89)90359-4.
- 28 53. Horton, R.M., Cai, Z., Ho, S.N., and Pease, L.R. (2013). Gene Splicing by Overlap Extension:
29 Tailor-Made Genes Using the Polymerase Chain Reaction. *BioTechniques* 54, 129–133.
30 10.2144/000114017.
- 31 54. Zimmermann, L., Stephens, A., Nam, S.-Z., Rau, D., Kübler, J., Lozajic, M., Gabler, F., Söding,
32 J., Lupas, A.N., and Alva, V. (2018). A Completely Reimplemented MPI Bioinformatics Toolkit
33 with a New HHpred Server at its Core. *J. Mol. Biol.* 430, 2237–2243. 10.1016/j.jmb.2017.12.007.
- 34 55. Kelley, L.A., Mezulis, S., Yates, C.M., Wass, M.N., and Sternberg, M.J.E. (2015). The Phyre2
35 web portal for protein modeling, prediction and analysis. *Nat. Protoc.* 10, 845–858.
36 10.1038/nprot.2015.053.
- 37 56. Abby, S.S., Néron, B., Ménager, H., Touchon, M., and Rocha, E.P.C. (2014). MacSyFinder: A
38 Program to Mine Genomes for Molecular Systems with an Application to CRISPR-Cas Systems.
39 *PLoS ONE* 9, e110726. 10.1371/journal.pone.0110726.
- 40 57. Payne, L.J., Meaden, S., Mestre, M.R., Palmer, C., Toro, N., Fineran, P.C., and Jackson, S.A.
41 (2022). PADLOC: a web server for the identification of antiviral defence systems in microbial
42 genomes. *Nucleic Acids Res.* 50, W541–W550. 10.1093/nar/gkac400.

- 1 58. Tesson, F., Hervé, A., Mordret, E., Touchon, M., d’Humières, C., Cury, J., and Bernheim, A.
2 (2022). Systematic and quantitative view of the antiviral arsenal of prokaryotes. *Nat. Commun.* *13*,
3 2561. [10.1038/s41467-022-30269-9](https://doi.org/10.1038/s41467-022-30269-9).
- 4 59. Altschul, S.F., Gish, W., Miller, W., Myers, E.W., and Lipman, D.J. (1990). Basic Local
5 Alignment Search Tool. *J. Mol. Biol.* *215*, 8. [https://doi.org/10.1016/S0022-2836\(05\)80360-2](https://doi.org/10.1016/S0022-2836(05)80360-2).
- 6 60. Quinlan, A.R., and Hall, I.M. (2010). BEDTools: a flexible suite of utilities for comparing
7 genomic features. *Bioinformatics* *26*, 841–842. [10.1093/bioinformatics/btq033](https://doi.org/10.1093/bioinformatics/btq033).
- 8 61. Seemann, T. (2014). Prokka: rapid prokaryotic genome annotation. *Bioinformatics* *30*, 2068–2069.
9 [10.1093/bioinformatics/btu153](https://doi.org/10.1093/bioinformatics/btu153).
- 10 62. Landsberger, M., Gandon, S., Meaden, S., Rollie, C., Chevallereau, A., Chabas, H., Buckling, A.,
11 Westra, E.R., and van Houte, S. (2018). Anti-CRISPR Phages Cooperate to Overcome CRISPR-
12 Cas Immunity. *Cell* *174*, 908-916.e12. [10.1016/j.cell.2018.05.058](https://doi.org/10.1016/j.cell.2018.05.058).

13