



**HAL**  
open science

## **A consensus protocol for functional connectivity analysis in the rat brain**

Joanes Grandjean, Gabriel Desrosiers-Gregoire, Cynthia Anckaerts, Diego Angeles-Valdez, Fadi Ayad, David A Barrière, Ines Blockx, Aleksandra Bortel, Margaret Broadwater, Beatriz M Cardoso, et al.

### ► To cite this version:

Joanes Grandjean, Gabriel Desrosiers-Gregoire, Cynthia Anckaerts, Diego Angeles-Valdez, Fadi Ayad, et al.. A consensus protocol for functional connectivity analysis in the rat brain. *Nature Neuroscience*, 2023, 26 (4), pp.673-681. 10.1038/s41593-023-01286-8. hal-04268925

**HAL Id: hal-04268925**

**<https://hal.science/hal-04268925>**

Submitted on 4 Nov 2023

**HAL** is a multi-disciplinary open access archive for the deposit and dissemination of scientific research documents, whether they are published or not. The documents may come from teaching and research institutions in France or abroad, or from public or private research centers.

L'archive ouverte pluridisciplinaire **HAL**, est destinée au dépôt et à la diffusion de documents scientifiques de niveau recherche, publiés ou non, émanant des établissements d'enseignement et de recherche français ou étrangers, des laboratoires publics ou privés.



Distributed under a Creative Commons Attribution 4.0 International License

# A consensus protocol for functional connectivity analysis in the rat brain

Received: 8 May 2022

Accepted: 15 February 2023

Published online: 27 March 2023

 Check for updates

A list of authors and their affiliations appears at the end of the paper

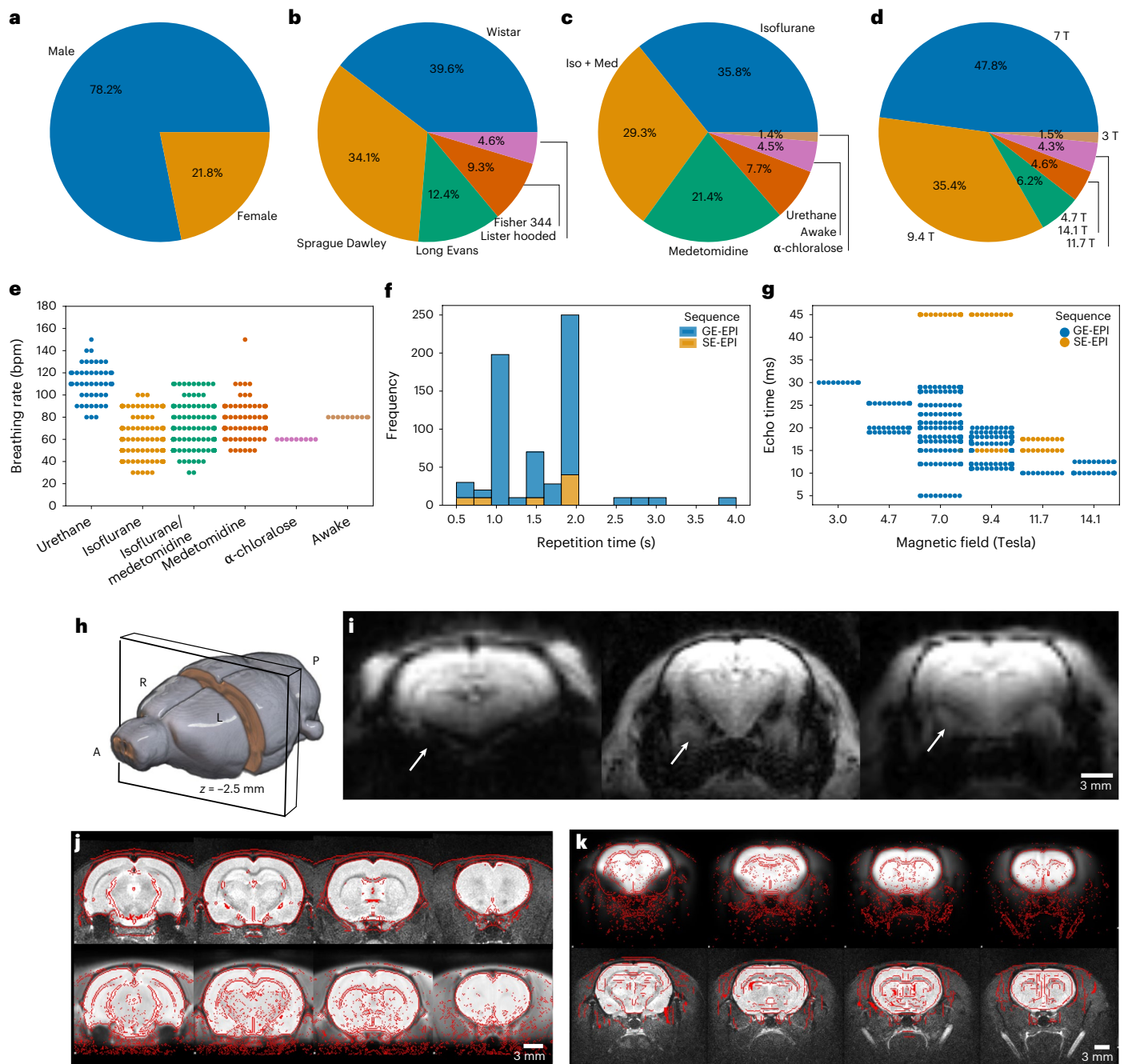
Task-free functional connectivity in animal models provides an experimental framework to examine connectivity phenomena under controlled conditions and allows for comparisons with data modalities collected under invasive or terminal procedures. Currently, animal acquisitions are performed with varying protocols and analyses that hamper result comparison and integration. Here we introduce StandardRat, a consensus rat functional magnetic resonance imaging acquisition protocol tested across 20 centers. To develop this protocol with optimized acquisition and processing parameters, we initially aggregated 65 functional imaging datasets acquired from rats across 46 centers. We developed a reproducible pipeline for analyzing rat data acquired with diverse protocols and determined experimental and processing parameters associated with the robust detection of functional connectivity across centers. We show that the standardized protocol enhances biologically plausible functional connectivity patterns relative to previous acquisitions. The protocol and processing pipeline described here is openly shared with the neuroimaging community to promote interoperability and cooperation toward tackling the most important challenges in neuroscience.

Understanding the brain requires a multi-level approach across spatial and temporal scales. Distinct brain network features, as revealed by task-free functional magnetic resonance imaging (fMRI), play a central role in the comprehension of healthy brain function and disorder mechanisms. This hemodynamic readout method relies on spontaneous fluctuations in the blood oxygenation level-dependent contrast signal to infer functional connectivity (FC) across the brain. Human neuroimaging has made great strides in understanding of the brain through open data-sharing initiatives focused on task-free fMRI data<sup>1–5</sup>. Nonetheless, animal models, particularly small rodents, continue to play an important role in neuroscience discovery, partly owing to the feasibility of performing invasive and terminal manipulations on genetically controlled animals<sup>6</sup>. For example, rats are commonly used in pharmacological studies, owing to similarities in drug metabolism, as well as in behavioral neuroscience, owing to their high proficiency in learning complex tasks. By leveraging the same neuroimaging methods and metrics obtained in humans, task-free neuroimaging in rodents may provide a translational bridge from the invasive methods possible only in animal models.

Human neuroimaging sharing initiatives have led to a standardization of fMRI acquisition protocols that aid in the dissemination, aggregation and reuse of data<sup>4,7,8</sup>. In contrast, preclinical neuroimaging essentially remains without harmonizing guidelines<sup>9</sup>. Animal data acquisitions are performed under diverse protocols that span different strains, restraint and anesthesia conditions, radiofrequency coil designs and magnetic field strengths. These impact the generalization of the results and conclusions. Efforts to propose acquisition and/or pre-processing protocols rarely extend beyond the confines of single laboratories, thus limiting interoperability and widespread adoption<sup>9,10</sup>. Because of the potential of fMRI in rodents to study the biological basis for connectivity phenomena across the whole brain longitudinally<sup>11</sup>, an optimized consensus protocol could potentiate future scientific discoveries.

In this pre-registered study, we set out to aggregate and make publicly available representative datasets with various fMRI acquisition protocols in the rat and identify experimental parameters associated with robust and reliable FC detection. We curated the MultiRat\_rest collection (646 rats from 65 datasets) representing protocols used

✉ e-mail: [joanes.grandjean@radboudumc.nl](mailto:joanes.grandjean@radboudumc.nl)



**Fig. 1 | MultiRat\_rest dataset description.** **a**, Sex. **b**, Strain. **c**, Anesthesia. **d**, Magnetic field strength. **e**, Breathing rate as a function of anesthesia. **f**, Repetition time. **g**, Echo time as a function of magnetic field strength. **h**, Slice position for the examples. **i**, Example of representative raw functional images. Arrows indicate different susceptibility artifact-related geometric distortions

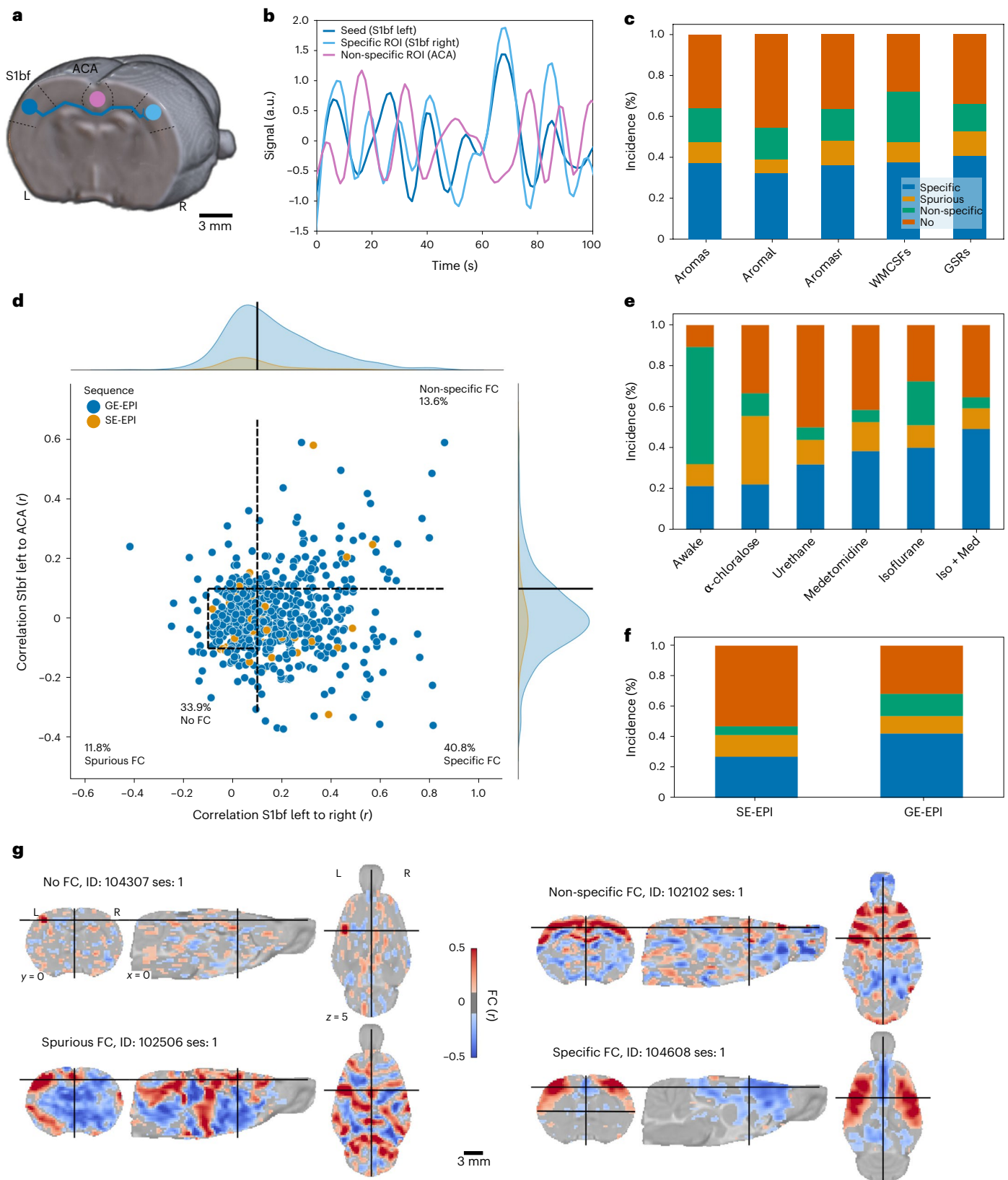
in the amygdala. **j**, Successful anatomical (top) to standard (bottom) space registration. Red lines indicate the outlines of the standard image (top) and the anatomical (bottom). **k**, Successful functional (top) to anatomical (bottom) registration. Red lines indicate the outlines of the anatomical image (top) and the functional (bottom).

at 46 institutions. Based on the analysis of the MultiRat\_rest collection, we devised a new consensus protocol and used it to aggregate the StandardRat collection (209 rats from 21 datasets). Pre-processing and confound correction were tailored to rodent data of different characteristics using a rodent-adapted fMRI pre-processing and analysis tool. Our primary outcome was the detection of plausible FC patterns corresponding to the biologically expected models. Collating data from 50 centers and 855 rats, we show that standardized acquisition and the associated pre-processing pipeline optimize the detection of distributed fMRI networks in rats. In line with large-scale

studies from other species<sup>12,13</sup>, we have freely released all data and the generated code.

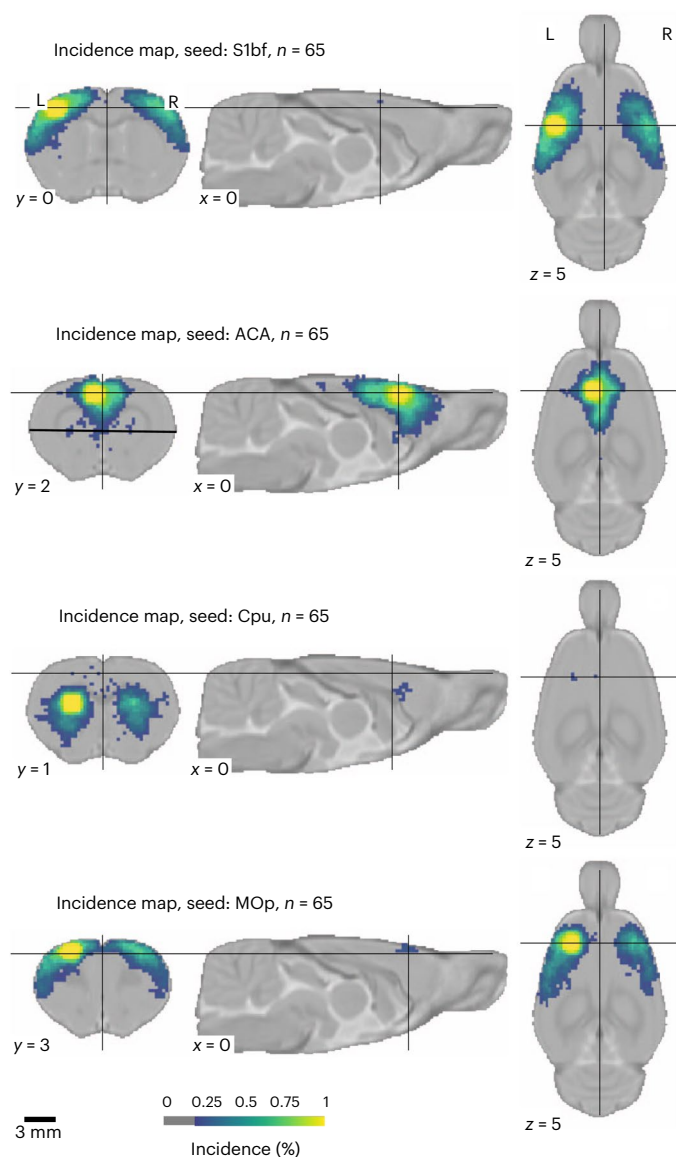
## Results

We aggregated the MultiRat\_rest collection of unstandardized fMRI datasets representative of local site acquisition procedures ( $n = 65$  datasets and  $n = 646$  rats). As expected, we found high heterogeneity in all experimental factors recorded, including rat characteristics (sex and strain, Fig. 1a,b, and age and weight, Extended Data Fig. 1), in-scan physiology (anesthesia/awake and breathing rates; Fig. 1c,e) and



**Fig. 2 | FC specificity.** **a**, Diagram illustrating the logic behind FC specificity. The sensory (barrel field, S1bf) area (blue) chiefly projects to the contralateral homotopic area (light blue) but not to the ACA area (purple). **b**, Example of temporal dynamics in the resting-state signal. Correlated signal between the ipsilateral and contralateral S1bf and anti-correlated signal from the ACA. **c**, Distribution of FC categories as a function of confound correction models. **d**, FC in left S1bf relative to specific (right S1bf) and non-specific (ACA) regions of interest using the global regression correction model. Dots represent

scans ( $n = 638$  rats); dotted lines indicate the thresholds used to delineate the categories. **e**, Distribution of connectivity categories as a function of anesthesia. Example of individual seed-based analysis maps for each connectivity category. **f**, Distribution of connectivity categories as a function of imaging sequence (EPI, echo-planar imaging; GE, gradient echo; SE, spin echo). Group-level FC incidence map ( $n = 65$  datasets). **g**, Example of individual seed-based analysis maps for each connectivity category. a.u., arbitrary units; ROI, region of interest; WMCSFs, white-matter + cerebrospinal fluid.



**Fig. 3 | Incidence of FC at the group level ( $n = 65$  datasets of  $n - 10$  subjects per dataset) for four seeds.** Cpu, caudate-putamen; MOp, primary motor area. MOp and Cpu seeds were generally observed in 50–75% of the datasets.

image acquisitions (magnetic field strength, sequence and sequence parameters; Fig. 1d,f,g). Notably, there was a large sex bias in favor of males (Fig. 1a). Similarly, the distribution of anesthesia protocols was also in line with current trends in the field (Fig. 1c)<sup>9</sup>. Despite the heterogeneous distribution of the acquisition parameters and ensuing image quality (Fig. 1g,h,i), 638 of 646 of the scans passed pre-processing quality control (one scan with excessive motion, one empty scan and six scans with failed image registrations; Fig. 1j,k and Extended Data Fig. 2). As further quality controls, we described temporal signal-to-noise (Extended Data Fig. 3) and motion parameters (Extended Data Fig. 4). Overall, we found that the aggregated datasets represent current rodent fMRI acquisition trends<sup>9</sup>. Moreover, given the low exclusion rate due to mis-registration, we concluded that the RABIES toolbox can be effectively employed to pre-process rat datasets despite widely varying acquisition parameters<sup>14</sup>. This paves the way for reproducible and interoperable data processing across sites.

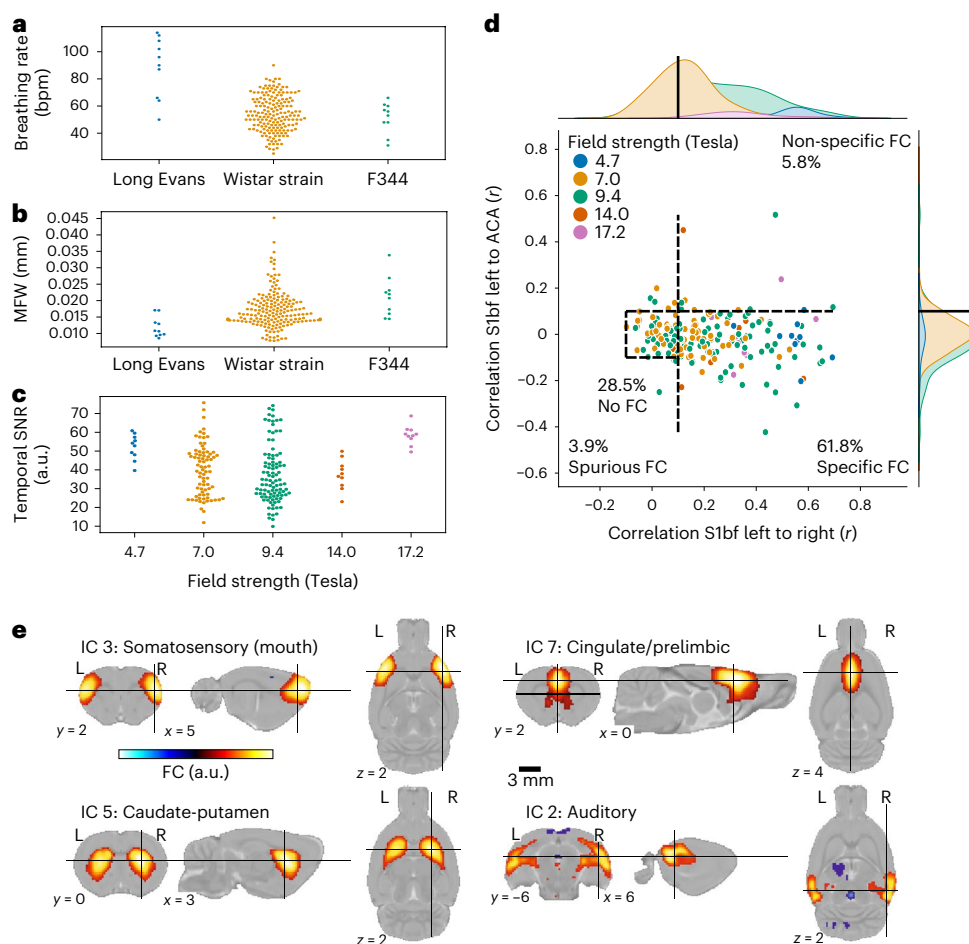
We focused on examining FC in the sensory cortex, as sensory networks are robust to assess anesthesia effects in the anesthesia depth range typically used in fMRI<sup>15</sup>. More specifically, we evaluated

the specificity of the connectivity of the S1 barrel field area (S1bf) using two complementary criteria as indexes of accurate FC identification (Fig. 2a,b)<sup>12</sup>. The first criterion was the strong connectivity between inter-hemispheric sensory cortices (barrel field, S1bf). Indeed, in both humans and animals, dating back to the original description of FC<sup>16</sup>, most networks, including sensory-motor networks, have a bilateral homotopic organization. The second criterion was a weak or anti-correlation between S1bf and the anterior cingulate area (ACA). The ACA is a major node in the task-negative rodent default mode network. Task-positive (as the S1bf-associated sensory network<sup>17,18</sup>) and task-negative networks are generally non-correlated or anti-correlated<sup>19</sup>.

FC was evaluated for each animal and divided into four categories based on these two criteria referred above: specific, non-specific, spurious and no connectivity. Five confound correction models were tested (Supplementary Table 2 and Fig. 2c). The global signal regression (GSR) nuisance model was the one that performed the best for specific connectivity detection (40.8% of the animals with specific connectivity, 11.8% as non-specific, 13.6% as spurious and 33.9% as containing no detectable FC; Fig. 2c,d,g). To test the generalizability of the specificity metric to other networks, we implemented the same quality control metric to the cingulate cortex, a node of the rodent default mode network, which uncovered lower connectivity specificity (22.1%; Extended Data Fig. 5). Because network inference is often assessed at the group level rather than at the individual level, we performed a one-sample  $t$ -test per dataset to estimate the incidence of contralateral connectivity detected within groups, relative to the S1bf seed as well as three other seeds (Fig. 3). Up to 70% of the 65 datasets presented limited evidence of contralateral connectivity relative to the seeds, and 50% of the datasets captured the features of a larger sensory network at the group level. We conclude that rat datasets do not capture FC equally, similar to what we reported in the mouse<sup>12</sup>. We also found that GSR enhances the incidence of specific connectivity of S1bf seeds, so we decided to use this confound model for the remainder of our analysis.

Our observations underline the need for an improved acquisition protocol to maximize individual-level inferences to potentiate discovery in experimental network neuroscience. To address this, we evaluated parameters associated with increased specificity incidence in the MultiRat\_rest collection. Because our analysis relied on categorical data, we tested for differences against the expected frequency distribution of the four connectivity categories as a function of anesthesia and sequence categories using the  $\chi^2$  test. Medetomidine/isoflurane anesthesia combination condition was enriched in scans categorized as specific (Fig. 2e; 92/187 scans,  $\chi^2$  test *connectivity category - anesthesia*:  $\phi = 0.27$ , degrees of freedom (dof) = 15,  $g = 92.38$ ,  $P = 3.5 \times 10^{-13}$ ). The use of gradient echo imaging sequence was also associated with higher specificity incidence (Fig. 2f; 241/568 scans,  $\chi^2$  test *connectivity category - sequence*:  $\phi = 0.11$ , dof = 3,  $g = 16.00$ ,  $P = 0.001$ ). Based on these observations, we devised an anesthesia protocol derived from dataset ds01031 (9/10 specific scans) and an imaging sequence based on ds01028 (8/10 specific scans), acquired on a 4.7T mid-field system. The sequence selection is justified as it allows for the detection of specific connectivity on one of the lower-field systems used in this collection and should also perform well for higher-field systems. We optimized relevant sequence parameters (echo time, flip angle and bandwidth) as a function of field strength (Supplementary Table 1). We hypothesized that this protocol would enhance functional specificity while being compatible with lower-field systems that continue to represent a relevant share of the systems used (Fig. 1d)<sup>9</sup>.

Using this consensus protocol, we curated the StandardRat collection of 21 datasets obtained across 20 centers. This consisted of  $n = 209$  rats (93/116 female/male), mainly Wistar (189/209), aged ~2 months (Extended Data Fig. 6). Dataset acquisitions were performed at magnetic field strengths ranging from 4.7T to 17.2T. Pre-processing



**Fig. 4 | StandardRat dataset description.** **a**, Breathing rate (bpm) as a function of strain. **b**, MFW as a function of strain. **c**, Temporal signal-to-noise ratio in the sensory cortex as a function of field strength. **d**, FC in left S1bf relative to specific (right S1bf) and non-specific (ACA) regions of interest using the global regression

correction model. Dots represent scans ( $n = 207$  rats); dotted lines indicate the thresholds used to delineate the categories. **e**, Representative independent components. a.u., arbitrary units.

was performed similarly to the unstandardized dataset. In total, 207 of 209 scans passed quality assurance (two discards due to image mis-registration). Interestingly, despite the same anesthesia protocol being used, the respiratory rates reported at the start of fMRI acquisition differed as a function of rat strain (Fig. 4a,b; analysis of variance *breathingrate - rat strain*,  $\eta^2 = 0.24$ ,  $F_{195,2} = 31.17$ ,  $P = 1.8 \times 10^{-12}$ ). Finally, there was only a negligible effect on the temporal signal-to-noise ratio as a function of magnetic field strength (Fig. 4c; linear regression *temporal signal-to-noise ratio - field strength*, coefficient = 0.53 [−0.23, 1.30],  $r^2 = 0.01$ , dof = 201,  $T = 1.37$ ,  $P = 0.17$ ).

The objective of the StandardRat study was to improve the detection of specific connectivity in the individual datasets. We found that 61.8% of the scans were categorized as exhibiting specific connectivity (Fig. 4d) against 40.8% in the MultiRat\_rest dataset with unstandardized acquisitions (Extended Data Fig. 8a) when using GSR ( $\chi^2$  test *connectivity category - dataset collection*:  $\phi = 0.13$ , dof = 3,  $g = 33.01$ ,  $P = 3.2 \times 10^{-7}$ ). The difference remained when we compared datasets from centers that contributed to both collections exclusively ( $\chi^2$  test *connectivity category - dataset collection*:  $\phi = 0.17$ , dof = 3,  $g = 28.37$ ,  $P = 3.0 \times 10^{-6}$ ). This is going against the notion that the StandardRat collection outperforms due to characteristics of the contributing laboratories (for example, magnet type or strength and greater experience in data collection). Intriguingly, we could not establish a field strength effect on connectivity specificity ( $\chi^2$  test *connectivity category - field strength*:  $\phi = 0.19$ , dof = 12,  $g = 14.89$ ,  $P = 0.25$ ), suggesting

that acquisition systems are not the limiting factor in this protocol. We conclude that the newly standardized protocol outperforms, on average, previously used protocols within the community for the detection of biologically plausible connectivity patterns. Finally, to explore whole-brain connectivity patterns, we examined connectivity incidence at the dataset level for four selected seeds (Extended Data Fig. 7) and group independent component analysis (Fig. 4e and Extended Data Fig. 10). We found improvement in distal connectivity detection at the dataset level compared to the MultiRat\_rest dataset as well as evidence for previously described rodent networks spanning across the whole brain<sup>20</sup>.

Intriguingly, there remained differences in the connectivity patterns between datasets from the StandardRat collection. Indeed, five of 21 datasets achieved 90% specificity or higher. This underlines the potential of our protocol but also the need to understand what factors hamper other datasets. We next sought to identify the variables associated with greater incidences of specific connectivity patterns. Notably, we could not establish strain, sex or magnetic field strength effects, suggesting that the protocol is applicable for a large range of conditions (Supplementary Table 3). Next, we examined breathing rate and temporal signal-to-noise ratio as indicators of acquisition variability (Extended Data Fig. 9). Overall, scans with breathing rates ranging from 84 to 114 breaths per minute (bpm) and cortical temporal signal-to-noise ratio >53 achieved higher incidences of connectivity specificity among the StandardRat collection. These provide the first

line of evidence to refine the StandardRat protocol by identifying practices that can further enhance connectivity outcomes. The importance of these observations will require confirmations in new datasets, preferably across multiple centers, before the StandardRat protocol can be updated with new guidelines.

## Discussion

In summary, we curated two dataset collections (MultiRat\_rest and StandardRat), analyzed them and made them an open-access resource. To our knowledge, these are the largest rodent fMRI datasets currently available. We developed and deployed a pre-processing and confound correction strategy generalizable to most scans and every dataset. Using information from the MultiRat\_rest collection, we provide useful population parameter estimates to enhance the comparison of rat fMRI datasets. We proposed and evaluated a new standardized protocol and found that this consensus acquisition and pre-processing pipeline outperformed the previous acquisitions for connectivity specificity. To allow replication and to inspire new analyses, we release all raw and processed data to the broader community.

On average, the standardized protocol yielded improvements over previous acquisitions gathered in the MultiRat\_rest collection. However, individual-level inferences remain limited to 61.8% of the scans acquired. For comparison, we estimated 55% specificity in the 7T Human Connectome Project dataset (based on 184 scans) using the same quality assurance metrics<sup>5</sup>. This underlines the importance of implementing sound quality assurance metrics based on assumptions of biologically plausible FC. Improving output quality, through understanding the factors leading to successful acquisitions, enhanced protocols, pre-processing or nuisance regression models, would lead to tangible outcomes capable of further potentiating future data acquisitions and reducing animal use by reducing discards.

Notably, our new protocol relies on light sedation to restrain the animals. Although optimized for fMRI, this protocol may not generalize to other procedures, such as electrophysiology. We also found that existing awake restraining protocols, on average, lead to a lower incidence of specific connectivity patterns (Extended Data Fig. 8b). A previous report indicated similar values in a dataset in awake rats<sup>21</sup>, which we confirmed with pre-processing using the RABIES pipeline (Extended Data Fig. 8b). Due to the impact of anesthesia on networks<sup>9,10</sup>, it remains central to develop awake imaging as an alternative. However, these protocols should be examined through the lens of quality control metrics to ensure that plausible connectivity patterns are achieved consistently. Furthermore, physiological factors, such as heart rate, were scarcely reported. This limited our ability to examine the possible contribution of these factors on connectivity outcomes. We take this opportunity to encourage the community to acquire these data and report them in ensuing publications. Finally, the acquisition sequence in StandardRat is designed to run on many systems. The effectiveness of new sequences should be examined against the current protocol—for example, isotropic resolution<sup>22</sup> or multiband acquisition<sup>23</sup>.

Our project's methodological and conceptual advancements are the first step toward large multi-site rat neuroimaging acquisitions. Coordinated open-science projects in neuroimaging and other disciplines are transforming the scientific landscape<sup>24</sup>. Through the concerted efforts of our centers and potentiated by a substantially improved protocol, rat functional brain imaging is set to tackle urgent questions in neuroscience and mental health research.

## Online content

Any methods, additional references, Nature Portfolio reporting summaries, source data, extended data, supplementary information, acknowledgements, peer review information; details of author contributions and competing interests; and statements of data and code availability are available at <https://doi.org/10.1038/s41593-023-01286-8>.

## References

- Elam, J. S. et al. The Human Connectome Project: a retrospective. *Neuroimage* **244**, 118543 (2021).
- Mennes, M., Biswal, B., Castellanos, F. X. & Milham, M. P. Making data sharing work: the FCP/INDI experience. *Neuroimage* **82**, 683 (2013).
- Miller, K. L. et al. Multimodal population brain imaging in the UK Biobank prospective epidemiological study. *Nat. Neurosci.* **19**, 1523–1536 (2016).
- Smith, S. M. et al. Resting-state fMRI in the Human Connectome Project. *Neuroimage* **80**, 144–168 (2013).
- Van Essen, D. C. et al. The WU-Minn Human Connectome Project: an overview. *Neuroimage* **80**, 62–79 (2013).
- Homberg, J. R. et al. The continued need for animals to advance brain research. *Neuron* **109**, 2374–2379 (2021).
- Alfaro-Almagro, F. et al. Image processing and quality control for the first 10,000 brain imaging datasets from UK Biobank. *Neuroimage* **166**, 400–424 (2018).
- Esteban, O. et al. FMRIPrep: a robust preprocessing pipeline for functional MRI. *Nat. Methods* **16**, 111–116 (2019).
- Mandino, F. et al. Animal functional magnetic resonance imaging: trends and path toward standardization. *Front. Neuroinform.* **13**, 78 (2019).
- Reimann, H. M. & Niendorf, T. The (un)conscious mouse as a model for human brain functions: key principles of anesthesia and their impact on translational neuroimaging. *Front. Syst. Neurosci.* **14**, 8 (2020).
- Pais-Roldán, P. et al. Contribution of animal models toward understanding resting state functional connectivity. *Neuroimage* **245**, 118630 (2021).
- Grandjean, J. et al. Common functional networks in the mouse brain revealed by multi-centre resting-state fMRI analysis. *Neuroimage* **205**, 116278 (2020).
- Milham, M. P. et al. An open resource for non-human primate imaging. *Neuron* **100**, 61–74 (2018).
- Desrosiers-Gregoire, G., Devenyi, G. A., Grandjean, J. & Chakravarty, M. M. Rodent Automated Bold Improvement of EPI Sequences (RABIES): a standardized image processing and data quality platform for rodent fMRI. 2022.08.20.504597 Preprint at <https://www.biorxiv.org/content/10.1101/2022.08.20.504597v1> (2022).
- Paasonen, J., Stenroos, P., Salo, R. A., Kiviniemi, V. & Gröhn, O. Functional connectivity under six anesthesia protocols and the awake condition in rat brain. *Neuroimage* **172**, 9–20 (2018).
- Biswal, B., Yetkin, F. Z., Haughton, V. M. & Hyde, J. S. Functional connectivity in the motor cortex of resting human brain using echo-planar MRI. *Magn. Reson. Med.* **34**, 537–541 (1995).
- Gozzi, A. & Schwarz, A. J. Large-scale functional connectivity networks in the rodent brain. *Neuroimage* **127**, 496–509 (2016).
- Mandino, F. et al. A triple-network organization for the mouse brain. *Mol. Psychiatry* **27**, 865–872 (2021).
- Fox, M. D. et al. The human brain is intrinsically organized into dynamic, anticorrelated functional networks. *Proc. Natl Acad. Sci. USA* **102**, 9673–9678 (2005).
- Zerbi, V., Grandjean, J., Rudin, M. & Wenderoth, N. Mapping the mouse brain with rs-fMRI: an optimized pipeline for functional network identification. *Neuroimage* **123**, 11–21 (2015).
- Liu, Y. et al. An open database of resting-state fMRI in awake rats. *Neuroimage* **220**, 117094 (2020).
- Lee, S.-H. et al. An isotropic EPI database and analytical pipelines for rat brain resting-state fMRI. *Neuroimage* **243**, 118541 (2021).

23. Lee, H.-L., Li, Z., Coulson, E. J. & Chuang, K.-H. Ultrafast fMRI of the rodent brain using simultaneous multi-slice EPI. *Neuroimage* **195**, 48–58 (2019).
24. Milham, M. P. et al. Assessment of the impact of shared brain imaging data on the scientific literature. *Nat. Commun.* **9**, 2818 (2018).

Springer Nature or its licensor (e.g. a society or other partner) holds exclusive rights to this article under a publishing agreement with the author(s) or other rightsholder(s); author self-archiving of the accepted manuscript version of this article is solely governed by the terms of such publishing agreement and applicable law.

**Publisher's note** Springer Nature remains neutral with regard to jurisdictional claims in published maps and institutional affiliations.

© The Author(s), under exclusive licence to Springer Nature America, Inc. 2023

Joanes Grandjean <sup>1,2</sup>✉, Gabriel Desrosiers-Gregoire<sup>3,4</sup>, Cynthia Anckaerts<sup>5,6</sup>, Diego Angeles-Valdez<sup>7</sup>, Fadi Ayad<sup>8,9,10</sup>, David A. Barrière <sup>11</sup>, Ines Blockx<sup>5,6</sup>, Aleksandra Bortel<sup>9,10,12</sup>, Margaret Broadwater<sup>13,14,15</sup>, Beatriz M. Cardoso<sup>16</sup>, Marina Célestine<sup>17</sup>, Jorge E. Chavez-Negrete<sup>18</sup>, Sangcheon Choi <sup>19,20</sup>, Emma Christiaen<sup>21</sup>, Perrin Clavijo<sup>22</sup>, Luis Colon-Perez <sup>23</sup>, Samuel Cramer<sup>24</sup>, Tolomeo Daniele<sup>25</sup>, Elaine Dempsey <sup>26,27</sup>, Yujian Diao<sup>28,29</sup>, Arno Doelemeyer<sup>30</sup>, David Dopfel<sup>24</sup>, Lenka Dvořáková<sup>31</sup>, Claudia Falfán-Melgoza<sup>32</sup>, Francisca F. Fernandes <sup>16</sup>, Caitlin F. Fowler<sup>3,8</sup>, Antonio Fuentes-Ibañez <sup>18</sup>, Clément Garin <sup>17</sup>, Eveline Gelderman <sup>1</sup>, Carla E. M. Golden <sup>33</sup>, Chao C. G. Guo <sup>1</sup>, Marloes J. A. G. Henckens <sup>1,34</sup>, Lauren A. Hennessy <sup>35,36</sup>, Peter Herman <sup>37,38</sup>, Nita Hofwijks<sup>1</sup>, Corey Horien <sup>37</sup>, Tudor M. Ionescu<sup>39</sup>, Jolyon Jones<sup>40</sup>, Johannes Kaesser<sup>41</sup>, Eugene Kim <sup>42</sup>, Henriette Lambers <sup>43</sup>, Alberto Lazari<sup>44</sup>, Sung-Ho Lee <sup>13,14,15</sup>, Amanda Lillywhite <sup>45,46</sup>, Yikang Liu<sup>24</sup>, Yanyan Y. Liu<sup>47</sup>, Alejandra López -Castro <sup>7</sup>, Xavier López-Gil <sup>48</sup>, Zilu Ma<sup>24</sup>, Eilidh MacNicol <sup>42</sup>, Dan Madularu<sup>8,49</sup>, Francesca Mandino <sup>37</sup>, Sabina Marciano<sup>39</sup>, Matthew J. McAuslan<sup>26</sup>, Patrick McCunn<sup>50</sup>, Alison McIntosh<sup>26,27</sup>, Xianzong Meng<sup>1</sup>, Lisa Meyer-Baese<sup>22</sup>, Stephan Missault<sup>5,6</sup>, Federico Moro <sup>51</sup>, Daphne M. P. Naessens <sup>52</sup>, Laura J. Nava-Gomez <sup>53,54</sup>, Hiroi Nonaka<sup>55</sup>, Juan J. Ortiz<sup>18</sup>, Jaakko Paasonen<sup>31</sup>, Lore M. Peeters<sup>5,6</sup>, Mickaël Pereira <sup>56</sup>, Pablo D. Perez<sup>24</sup>, Marjory Pompilus<sup>57</sup>, Malcolm Prior<sup>58</sup>, Rustam Rakhmatullin<sup>59</sup>, Henning M. Reimann<sup>60</sup>, Jonathan Reinwald<sup>61</sup>, Rodrigo Triana Del Rio<sup>62</sup>, Alejandro Rivera-Olvera<sup>1</sup>, Daniel Ruiz-Pérez<sup>59</sup>, Gabriele Russo<sup>63</sup>, Tobias J. Rutten<sup>1</sup>, Rie Ryoke<sup>55</sup>, Markus Sack<sup>32</sup>, Piergiorgio Salvan <sup>44</sup>, Basavaraju G. Sanganahalli <sup>37,38</sup>, Aileen Schroeter<sup>64</sup>, Bhedita J. Seewoo <sup>35,36,65</sup>, Erwan Selingue<sup>66</sup>, Aline Seuwen<sup>64</sup>, Bowen Shi <sup>67</sup>, Nikoloz Sirmipilatzé <sup>68,69,70</sup>, Joanna A. B. Smith<sup>71,72,73</sup>, Corrie Smith<sup>22</sup>, Filip Sobczak <sup>19,20</sup>, Petteri J. Stenroos<sup>74</sup>, Milou Straathof<sup>75</sup>, Sandra Strobel<sup>41</sup>, Akira Sumiyoshi<sup>55,76</sup>, Kengo Takahashi<sup>19,20</sup>, Maria E. Torres-García<sup>18</sup>, Raul Tudela<sup>77</sup>, Monica van den Berg <sup>5,6</sup>, Kajo van der Marel<sup>75</sup>, Aran T. B. van Hout<sup>1</sup>, Roberta Vertullo<sup>1</sup>, Benjamin Vidal <sup>56</sup>, Roël M. Vrooman <sup>1</sup>, Victora X. Wang<sup>78</sup>, Isabel Wank<sup>41</sup>, David J. G. Watson<sup>45</sup>, Ting Yin<sup>79</sup>, Yongzhi Zhang<sup>80</sup>, Stefan Zurbrugg<sup>81</sup>, Sophie Achard <sup>82</sup>, Sarael Alcauter<sup>18</sup>, Dorothee P. Auer<sup>58,83</sup>, Emmanuel L. Barbier <sup>74</sup>, Jürgen Baudewig<sup>68</sup>, Christian F. Beckmann<sup>1,44</sup>, Nicolau Beckmann <sup>30</sup>, Guillaume J. P. C. Becq <sup>84</sup>, Erwin L. A. Blezer<sup>75</sup>, Radu Bolbos<sup>85</sup>, Susann Boretius <sup>68,69,70</sup>, Sandrine Bouvard<sup>56</sup>, Eike Budinger <sup>86,87</sup>, Joseph D. Buxbaum <sup>33</sup>, Diana Cash <sup>42</sup>, Victoria Chapman<sup>45,46,83</sup>, Kai-Hsiang Chuang <sup>88</sup>, Luisa Ciobanu<sup>66</sup>, Bram F. Coolen<sup>52</sup>, Jeffrey W. Dalley<sup>40</sup>, Marc Dhenain <sup>17</sup>, Rick M. Dijkhuizen<sup>75</sup>, Oscar Esteban <sup>89</sup>, Cornelius Faber <sup>43</sup>, Marcelo Febo<sup>57</sup>, Kirk W. Feindel<sup>65</sup>, Gianluigi Forloni <sup>90</sup>, Jérémie Fouquet<sup>3</sup>, Eduardo A. Garza-Villarreal<sup>7</sup>, Natalia Gass<sup>32</sup>, Jeffrey C. Glennon<sup>91</sup>, Alessandro Gozzi <sup>92</sup>, Olli Gröhn<sup>31</sup>, Andrew Harkin<sup>26,27</sup>, Arend Heerschap <sup>2</sup>, Xavier Helluy<sup>63,93</sup>, Kristina Herfert <sup>39</sup>, Arnd Heuser <sup>94</sup>, Judith R. Homberg <sup>1</sup>, Danielle J. Houwing<sup>1</sup>, Fahmeed Hyder <sup>37,38</sup>, Giovanna Diletta Ielacqua<sup>94</sup>, Ileana O. Jelescu <sup>28</sup>, Heidi Johansen-Berg<sup>44</sup>, Gen Kaneko <sup>95</sup>, Ryuta Kawashima<sup>55</sup>, Shella D. Keilholz <sup>22</sup>, Georgios A. Keliris <sup>5,6</sup>, Clare Kelly <sup>27,96,97</sup>, Christian Kerskens<sup>27,98</sup>, Jibrán Y. Khokhar<sup>50</sup>, Peter C. Kind<sup>71,72,73,99</sup>, Jean-Baptiste Langlois<sup>85</sup>, Jason P. Lerch<sup>44,100</sup>, Monica A. López-Hidalgo<sup>54</sup>, Denise Manahan-Vaughan<sup>63</sup>, Fabien Marchand<sup>101</sup>, Rogier B. Mars<sup>1,44</sup>, Gerardo Marsella<sup>102</sup>, Edoardo Micotti<sup>90</sup>, Emma Muñoz-Moreno <sup>48</sup>, Jamie Near <sup>3,103</sup>, Thoralf Niendorf<sup>60,104</sup>, Willem M. Otte<sup>75,105</sup>, Patricia Pais-Roldán <sup>19,106</sup>, Wen-Ju Pan<sup>22</sup>, Roberto A. Prado-Alcalá<sup>18</sup>, Gina L. Quirarte <sup>18</sup>, Jennifer Rodger <sup>35,36</sup>, Tim Rosenow <sup>107</sup>, Cassandra Sampaio-Baptista <sup>44,108</sup>, Alexander Sartorius <sup>61</sup>, Stephen J. Sawiak <sup>109</sup>, Tom W. J. Scheenen <sup>2,110</sup>, Noam Shemesh <sup>16</sup>, Yen-Yu Ian Shih <sup>13,14,15,111</sup>, Amir Shmuel <sup>8,9,10,12,112</sup>, Guadalupe Soria <sup>113</sup>, Ron Stoop<sup>62</sup>, Garth J. Thompson <sup>67</sup>, Sally M. Till<sup>71,72,73</sup>, Nick Todd<sup>80</sup>, Annemie Van Der Linden<sup>5,6</sup>, Annette van der Toorn <sup>75</sup>, Geralda A. F. van Tilborg <sup>75</sup>, Christian Vanhove <sup>21</sup>, Andor Veltien <sup>2</sup>, Marleen Verhoye <sup>5,6</sup>, Lydia Wachsmuth<sup>43</sup>, Wolfgang Weber-Fahr<sup>32</sup>, Patricia Wenk<sup>86</sup>, Xin Yu<sup>19,114</sup>, Valerio Zerbi <sup>115,116</sup>, Nanyin Zhang <sup>24</sup>, Baogui B. Zhang<sup>47</sup>, Luc Zimmer <sup>56,85,117</sup>, Gabriel A. Devenyi <sup>3,118</sup>, M. Mallar Chakravarty<sup>3,8,118</sup> & Andreas Hess <sup>41</sup>

<sup>1</sup> Donders Institute for Brain, Behaviour, and Cognition, Radboud University, Nijmegen, The Netherlands. <sup>2</sup> Department for Medical Imaging, Radboud University Medical Center, Nijmegen, The Netherlands. <sup>3</sup> Cerebral Imaging Centre, Douglas Mental Health University Institute, Verdun, QC, Canada. <sup>4</sup> Integrated Program in Neuroscience, McGill University, Montreal, QC, Canada. <sup>5</sup> Bio-imaging Lab, University of Antwerp, Antwerp, Belgium.



<sup>6</sup>μNEURO Research Centre of Excellence, University of Antwerp, Antwerp, Belgium. <sup>7</sup>Instituto de Neurobiología, Universidad Nacional Autónoma de México, Campus Juriquilla, Querétaro, Mexico. <sup>8</sup>Biological and Biomedical Engineering, McGill University, Montreal, QC, Canada. <sup>9</sup>McConnell Brain Imaging Centre, McGill University, Montreal, QC, Canada. <sup>10</sup>Montreal Neurological Institute, McGill University, Montreal, QC, Canada. <sup>11</sup>UMR INRAE/CNRS 7247 Physiologie des Comportements et de la Reproduction, Physiologie de la reproduction et des comportements, Centre de recherche INRAE de Nouzilly, Tours, France. <sup>12</sup>Department of Neurology and Neurosurgery, McGill University, Montreal, QC, Canada. <sup>13</sup>Center for Animal MRI, University of North Carolina at Chapel Hill, Chapel Hill, NC, USA. <sup>14</sup>Department of Neurology, University of North Carolina at Chapel Hill, Chapel Hill, NC, USA. <sup>15</sup>Biomedical Research Imaging Center, University of North Carolina at Chapel Hill, Chapel Hill, NC, USA. <sup>16</sup>Preclinical MRI, Champalimaud Research, Champalimaud Centre for the Unknown, Lisbon, Portugal. <sup>17</sup>Laboratoire des Maladies Neurodégénératives, Molecular Imaging Research Center (MIRCent), Université Paris-Saclay, Commissariat à l'Énergie Atomique et aux Énergies Alternatives (CEA), CNRS, Fontenay-aux-Roses, France. <sup>18</sup>Departamento de Neurobiología Conductual y Cognitiva, Instituto de Neurobiología, Universidad Nacional Autónoma de México, Campus Juriquilla, Querétaro, México. <sup>19</sup>Translational Neuroimaging and Neural Control Group, High-Field Magnetic Resonance, Max Planck Institute for Biological Cybernetics, Tuebingen, Germany. <sup>20</sup>Graduate Training Centre of Neuroscience, International Max Planck Research School, University of Tuebingen, Tuebingen, Germany. <sup>21</sup>Institute Biomedical Technology (IBiTech), Electronics and Information Systems (ELIS), Ghent University, Ghent, Belgium. <sup>22</sup>Department of Biomedical Engineering, Emory University/Georgia Institute of Technology, Atlanta, GA, USA. <sup>23</sup>Department of Pharmacology & Neuroscience, University of North Texas Health Science Center, Fort Worth, TX, USA. <sup>24</sup>Translational Neuroimaging and Systems Neuroscience Lab, Biomedical Engineering, Pennsylvania State University, University Park, PA, USA. <sup>25</sup>Centre for Advanced Biomedical Imaging, University College London, London, UK. <sup>26</sup>Neuropsychopharmacology Research Group, School of Pharmacy and Pharmaceutical Sciences, Trinity College Dublin, Dublin, Ireland. <sup>27</sup>Trinity College Institute of Neuroscience, Trinity College Dublin, Dublin, Ireland. <sup>28</sup>CIBM Center for Biomedical Imaging, Ecole Polytechnique Fédérale de Lausanne, Lausanne, Switzerland. <sup>29</sup>Laboratory for Functional and Metabolic Imaging, Ecole Polytechnique Fédérale de Lausanne, Lausanne, Switzerland. <sup>30</sup>Musculoskeletal Diseases Department, Novartis Institutes for BioMedical Research, Basel, Switzerland. <sup>31</sup>Biomedical Imaging Unit, A.I.V. Institute for Molecular Sciences, University of Eastern Finland, Kuopio, Finland. <sup>32</sup>Translational Imaging, Department of Neuroimaging, Central Institute of Mental Health, Medical Faculty Mannheim, Mannheim, Germany. <sup>33</sup>Seaver Autism Center for Research & Treatment, Department of Psychiatry, Icahn School of Medicine at Mount Sinai, New York City, NY, USA. <sup>34</sup>Department of Neuroscience and Pharmacology, Rudolf Magnus Institute of Neuroscience, University Medical Center Utrecht, Utrecht, The Netherlands. <sup>35</sup>Experimental and Regenerative Neurosciences, School of Biological Sciences, University of Western Australia, Crawley, WA, Australia. <sup>36</sup>Brain Plasticity Group, Perron Institute for Neurological and Translational Science, Nedlands, WA, Australia. <sup>37</sup>Radiology and Biomedical Imaging, Yale University School of Medicine, New Haven, CT, USA. <sup>38</sup>Quantitative Neuroscience with Magnetic Resonance (QNMR) Core Center, Yale University School of Medicine, New Haven, CT, USA. <sup>39</sup>Werner Siemens Imaging Center, Department of Preclinical Imaging and Radiopharmacy, University of Tuebingen, Tuebingen, Germany. <sup>40</sup>Department of Psychology, University of Cambridge, Cambridge, UK. <sup>41</sup>Institute of Experimental and Clinical Pharmacology and Toxicology, FAU Erlangen-Nürnberg, Erlangen, Germany. <sup>42</sup>Biomarker Research And Imaging in Neuroscience (BRAIN) Centre, Department of Neuroimaging King's College London, London, UK. <sup>43</sup>Experimental Magnetic Resonance Group, Clinic of Radiology, University of Münster, Münster, Germany. <sup>44</sup>Nuffield Department of Clinical Neurosciences, Wellcome Centre for Integrative Neuroimaging, FMRIB, University of Oxford, John Radcliffe Hospital, Headington, Oxford, UK. <sup>45</sup>School of Life Sciences, University of Nottingham, Nottingham, UK. <sup>46</sup>Pain Centre Versus Arthritis, University of Nottingham, Nottingham, UK. <sup>47</sup>Brainnetome Center, Institute of Automation, Chinese Academy of Sciences, Beijing, China. <sup>48</sup>Magnetic Imaging Resonance Core Facility, Institut d'Investigacions Biomèdiques August Pi I Sunyer (IDIBAPS), Barcelona, Spain. <sup>49</sup>Center for Translational Neuroimaging, Northeastern University, Boston, MA, USA. <sup>50</sup>Khokhar Lab, Department of Anatomy and Cell Biology, Western University, London, ON, Canada. <sup>51</sup>Laboratory of Acute Brain Injury and Therapeutic Strategies, Department of Neuroscienze Istituto di Ricerche Farmacologiche Mario Negri, IRCCS, Milan, Italy. <sup>52</sup>Biomedical Engineering and Physics, Amsterdam UMC, University of Amsterdam, Amsterdam, The Netherlands. <sup>53</sup>Facultad de Medicina, Universidad Autónoma de Querétaro, Querétaro, México. <sup>54</sup>Escuela Nacional de Estudios Superiores, Juriquilla, Universidad Nacional Autónoma de México, Querétaro, México. <sup>55</sup>Institute of Development, Aging and Cancer, Tohoku University, Sendai, Japan. <sup>56</sup>Lyon Neuroscience Research Center, Université Claude Bernard Lyon 1, INSERM, CNRS, Lyon, France. <sup>57</sup>Febo Laboratory, Department of Psychiatry, University of Florida, Gainesville, FL, USA. <sup>58</sup>School of Medicine, University of Nottingham, Nottingham, UK. <sup>59</sup>Comparative Medicine Unit, Trinity College Dublin, Dublin, Ireland. <sup>60</sup>Berlin Ultrahigh Field Facility (B.U.F.F.), Max-Delbrück Center for Molecular Medicine in the Helmholtz Association, Berlin, Germany. <sup>61</sup>Translational Imaging, Department of Psychiatry and Psychotherapy, Central Institute of Mental Health, Medical Faculty Mannheim, University of Heidelberg, Mannheim, Germany. <sup>62</sup>Psychiatric neurosciences, Center for Psychiatric Neuroscience, Lausanne University and University Hospital Center, Uniceur, Lausanne, Switzerland. <sup>63</sup>Department of Neurophysiology, Medical Faculty, Ruhr University Bochum, Bochum, Germany. <sup>64</sup>Institute for Biomedical Engineering, University and ETH Zurich, Zurich, Switzerland. <sup>65</sup>Centre for Microscopy, Characterisation & Analysis, Research Infrastructure Centres, University of Western Australia, Nedlands, WA, Australia. <sup>66</sup>NeuroSpin, CEA Saclay, Paris, France. <sup>67</sup>iHuman Institute, ShanghaiTech University, Shanghai, China. <sup>68</sup>Functional Imaging Laboratory, German Primate Center - Leibniz Institute for Primate Research, Göttingen, Germany. <sup>69</sup>Faculty of Biology and Psychology, Georg-August University of Göttingen, Göttingen, Germany. <sup>70</sup>DFG Research Center for Nanoscale Microscopy and Molecular Physiology of the Brain (CNMPB), Göttingen, Germany. <sup>71</sup>Simons Initiative for the Developing Brain, University of Edinburgh, Edinburgh, UK. <sup>72</sup>Patrick Wild Centre, University of Edinburgh, Edinburgh, UK. <sup>73</sup>Centre for Discovery Brain Sciences, University of Edinburgh, Edinburgh, UK. <sup>74</sup>Univ. Grenoble Alpes, Inserm, U1216, Grenoble Institut Neurosciences, Grenoble, France. <sup>75</sup>Biomedical MR Imaging and Spectroscopy Group, Center for Image Sciences, University Medical Center Utrecht & Utrecht University, Utrecht, The Netherlands. <sup>76</sup>National Institutes for Quantum Science and Technology, Chiba, Japan. <sup>77</sup>Group of Biomedical Imaging, Consorcio Centro de Investigación Biomédica en Red (CIBER) de Bioingeniería, Biomateriales y Nanomedicina (CIBER-BBN), University of Barcelona, Barcelona, Spain. <sup>78</sup>BioMedical Engineering and Imaging Institute, Icahn School of Medicine at Mount Sinai, New York City, NY, USA. <sup>79</sup>Animal Imaging and Technology Section, Center for Biomedical Imaging, École polytechnique fédérale de Lausanne, Lausanne, Switzerland. <sup>80</sup>Focused Ultrasound Laboratory, Department of Radiology Brigham and Women's Hospital, Boston, MA, USA. <sup>81</sup>Neurosciences Department, Novartis Institutes for BioMedical Research, Basel, Switzerland. <sup>82</sup>Inria, University Grenoble Alpes, CNRS, Grenoble, France. <sup>83</sup>NIHR Biomedical Research Centre, University of Nottingham, Nottingham, UK. <sup>84</sup>Gipsa-lab, University Grenoble Alpes, CNRS, Grenoble, France. <sup>85</sup>CERMEP - Imagerie du vivant, Lyon, France. <sup>86</sup>Combinatorial NeuroImaging Core Facility, Leibniz Institute for Neurobiology, Magdeburg, Germany. <sup>87</sup>Center for Behavioral Brain Sciences, Magdeburg, Germany. <sup>88</sup>Queensland Brain Institute and Centre for Advanced Imaging, University of Queensland, St. Lucia, QLD, Australia. <sup>89</sup>Lausanne University Hospital and University of Lausanne, Lausanne, Switzerland. <sup>90</sup>Biology of Neurodegenerative Disorders, Department of Neuroscience Istituto di Ricerche Farmacologiche Mario Negri, IRCCS, Milan, Italy. <sup>91</sup>Conway Institute of Biomedical and Biomolecular Sciences, School of Medicine, University College Dublin, Dublin, Ireland. <sup>92</sup>Functional Neuroimaging Laboratory, Center for Neuroscience and Cognitive Systems, Istituto Italiano di Tecnologia, Rovereto, Italy. <sup>93</sup>Department of Biopsychology, Institute of Cognitive Neuroscience, Ruhr University Bochum, Bochum, Germany. <sup>94</sup>Max-Delbrück Center

for Molecular Medicine in the Helmholtz Association, Berlin, Germany. <sup>95</sup>School of Arts & Sciences, University of Houston-Victoria, Victoria, TX, USA. <sup>96</sup>School of Psychology, Trinity College Dublin, Dublin, Ireland. <sup>97</sup>Department of Psychiatry, School of Medicine, Trinity College Dublin, Dublin, Ireland. <sup>98</sup>Trinity Centre for Biomedical Engineering, School of Medicine, Trinity College Dublin, Dublin, Ireland. <sup>99</sup>Centre for Brain Development and Repair, Institute for Stem Cell Biology and Regenerative Medicine, Bangalore, India. <sup>100</sup>Department of Medical Biophysics, University of Toronto, Toronto, QC, Canada. <sup>101</sup>Université Clermont Auvergne, Inserm U1107 Neuro-Dol, Pharmacologie Fondamentale et Clinique de la Douleur, Clermont-Ferrand, France. <sup>102</sup>Animal Care Unit, Istituto di Ricerche Farmacologiche Mario Negri, IRCCS, Milan, Italy. <sup>103</sup>Physical Sciences Platform, Sunnybrook Research Institute, Toronto, QC, Canada. <sup>104</sup>Experimental and Clinical Research Center, A Joint Cooperation Between the Charité Medical Faculty and the Max-Delbrück Center for Molecular Medicine in the Helmholtz Association, Berlin, Germany. <sup>105</sup>Department of Pediatric Neurology, UMC Utrecht Brain Center, University Medical Center Utrecht & Utrecht University, Utrecht, The Netherlands. <sup>106</sup>Medical Imaging Physics (INM-4), Institute of Neuroscience and Medicine, Forschungszentrum Juelich, Juelich, Germany. <sup>107</sup>Centre for Microscopy, Characterisation and Analysis, University of Western Australia, Crawley, WA, Australia. <sup>108</sup>School of Psychology and Neuroscience, University of Glasgow, Glasgow, UK. <sup>109</sup>Translational Neuroimaging Laboratory, Physiology, Development and Neuroscience, University of Cambridge, Cambridge, UK. <sup>110</sup>Erwin L. Hahn Institute for MR Imaging, University of Duisburg-Essen, Essen, Germany. <sup>111</sup>Biomedical Engineering, University of North Carolina at Chapel Hill, Chapel Hill, NC, USA. <sup>112</sup>Department of Physiology, McGill University, Montreal, QC, Canada. <sup>113</sup>Laboratory of Surgical Neuroanatomy, Institute of Neuroscience, University of Barcelona, Barcelona, Spain. <sup>114</sup>Athinoula A. Martinos Center for Biomedical Imaging, Massachusetts General Hospital and Harvard Medical School, Charlestown, MA, USA. <sup>115</sup>Neuro-X Institute, School of Engineering (STI), EPFL, Lausanne, Switzerland. <sup>116</sup>Centre for Biomedical Imaging (CIBM), Lausanne, Switzerland. <sup>117</sup>Hospices Civils de Lyon, Lyon, France. <sup>118</sup>Department of Psychiatry, McGill University, Montreal, QC, Canada. ✉ e-mail: [joanes.grandjean@radboudumc.nl](mailto:joanes.grandjean@radboudumc.nl)

## Methods

### Pre-registration

This study was pre-registered (<https://doi.org/10.17605/OSF.IO/EMQ4B>). The following are notable deviations. We used the SIGMA rat template<sup>25</sup> instead of the Papp et al. template<sup>26</sup>, owing to fewer artifacts, additional relevant assets and improved in vivo contrast. Some datasets had field of view cropped to ease image registration. Some datasets had time series cropped to ease the computational load. We used temporal signal-to-noise instead of signal-to-noise ratio, as these were shown to be correlated<sup>12</sup>. Detailed deviations are listed here: <https://github.com/grandjeanlab/MultiRat>.

### Animals

All acquisitions were performed after approval from the respective local and national ethical authorities. Participating laboratories were instructed to provide  $n = 10$  rat imaging acquisitions consisting of one anatomical and one resting-state functional run. Exclusion criteria were unsuitability for RABIES pre-processing (for example, dedicated image reconstruction needs and restricted field of view). The MultiRat\_rest collection consists of  $n = 65$  datasets from 46 research centers and  $n = 646$  rats (141/505 female/male). StandardRat consists of  $n = 21$  datasets and  $n = 209$  rats (93/116 female/male) from 20 research centers. For comparison, 224 scans ( $n = 39$  rats) from a single-center awake rat dataset were included<sup>21</sup>. Exclusions were based on the following criteria: image misregistration (Extended Data Fig. 2), excessive motion and missing or corrupted data.

### Standardized fMRI acquisition protocol

The standardized protocol was determined based on the outcomes of the analysis of MultiRat\_rest and used to acquire the StandardRat dataset. Acquisitions were performed chiefly in ~2-month-old free-breathing Wistar rats, mixed sex, and anesthetized using 4% isoflurane and 0.05 mg kg<sup>-1</sup> medetomidine subcutaneous (s.c.) bolus for induction and 0.4% isoflurane and 0.1 mg/kg/h medetomidine s.c. for maintenance. Imaging with a gradient-echo echo-planar imaging technique was conducted 40 minutes after anesthesia induction, with repetition time = 1,000 ms, echo time/flip angle/bandwidth defined as a function of field strength (Supplementary Table 1), repetitions = 1,000, matrix size [64 × 64], field of view 25.6 × 25.6 mm<sup>2</sup> and 18 interleaved axial slices of 1 mm with 0.1-mm gap. The full protocol is available here: <https://github.com/grandjeanlab/StandardRat>.

### Data pre-processing and confound correction

Scans were organized according to the BIDS format<sup>27</sup>. Pre-processing was performed on each scan session separately using a reproducible containerized software environment for RABIES 0.3.5 (Singularity 3.7.3–1.el7, Sylabs)<sup>14</sup>. The pre-processing was performed using auto-box<sup>28</sup>, N4 inhomogeneity correction<sup>29</sup>, motion correction<sup>29</sup>, a rigid registration between functional and anatomical scans<sup>29</sup>, non-linear registration between anatomical scan and template and a common space resampling to 0.3 × 0.3 × 0.3 mm<sup>3</sup>. A volumetric image registration and brain masking workflow was developed to address discrepancies in brain size, image contrast and susceptibility distortions that are found in rodent images. Visual inspection was performed on pre-processing outputs for all scans for quality control. Five confound correction models were tested, using three approaches based on ICA-AROMA<sup>30</sup>, white matter and ventricle signal or GSR (Supplementary Table 2). These were done together with motion regression, spatial smoothing to 0.5 mm<sup>3</sup>, a high-pass filter of 0.01 Hz and a low-pass filter of either 0.1 Hz or 0.2 Hz. The ICA-AROMA method was adapted from humans to rats by using dedicated rat cerebrospinal fluid and brain edge masks and by training the classifier parameters based on a set of rodent images. A visual inspection of the components and their classifications indicated that less than 5% of the plausible signal components were erroneously labeled as noise.

### Data analysis

To determine FC in individual rats, seed-based analysis was performed with RABIES in template space using spherical seeds of 0.9-mm diameter located on the S1bf and the ACA, caudate-putamen and primary motor area. Functional connectivity was calculated as the Pearson's correlation coefficient between regional time courses. Functional connectivity specificity was defined relative to the left S1bf seed, using the contralateral right S1bf region of interest as the specific region of interest and the ACA as the non-specific region of interest<sup>12</sup>. FC was evaluated for each animal and divided into four categories: specific ( $r_{\text{S1bf left to right}} > 0.1$  AND  $r_{\text{S1bf left to ACA}} < 0.1$ ); non-specific ( $r_{\text{S1bf left to right}} > 0.1$  AND  $r_{\text{S1bf left to ACA}} > 0.1$ ); no ( $r_{\text{S1bf left to right}} [-0.1, 0.1]$  AND  $r_{\text{S1bf left to ACA}} [-0.1, 0.1]$ ); and spurious connectivity (remaining cases). To assess connectivity specificity in the default mode network, the same approach was implemented with a seed in the ACA. The specific region of interest was located in the ACA (3.3 mm posterior to the seed), and the non-specific region of interest was located in the S1bf. To assess whole-brain connectivity, group independent component analysis was performed with  $n = 20$  components using Nilearn ([https://github.com/grandjeanlab/MultiRat/blob/master/assets/nifti/canica\\_resting\\_state\\_clean.nii.gz](https://github.com/grandjeanlab/MultiRat/blob/master/assets/nifti/canica_resting_state_clean.nii.gz)). Components' biological plausibility was assessed using criteria defined in Zerbi et al.<sup>20</sup>. For comparison against humans, the same quality control metric was implemented on the 7T Human Connectome Project dataset<sup>5</sup>. The FIX-denoised scans ( $n = 184$  participants) were bandpass corrected (0.01–0.1 Hz) and smoothed (2.5 mm<sup>2</sup>) using 3dTproject. Regions of interest were positioned in the sensory cortex and ACA.

### Statistics and reproducibility

Sample size was determined on the basis of the available datasets forming this collection. No randomization was applied. Data collection and analysis were not performed blinded to the conditions of the experiments. One-sample *t*-test voxel-wise maps and group independent component analysis were estimated using Nilearn 0.7.1 (ref. <sup>31</sup>). Comparisons between FC specificity and categorical variables (for example, magnetic field strength, strain and sex) were determined using  $\chi^2$  tests, as implemented in SciPy 1.6.2 (ref. <sup>32</sup>). Continuous variables (for example, mean framewise displacement (MFW)) were transformed into six categorical bins to allow comparison with  $\chi^2$  tests. Linear regression and analysis of variance were performed using Pingouin 0.5 (ref. <sup>33</sup>). Individual seed-based maps are represented as color-coded overlays thresholded at  $r > 0.1$ . Given the emphasis on detection of FC and the factors that affect it, we mitigated against false negatives by applying a liberal threshold of  $P_{\text{uncorrected}} < 0.05$  to the one-sample *t*-test maps, following pre-registration specifications. This thresholding is justified because we did not want to exclude any datasets with weak potential traces of FC. Slice positions are indicated in millimeters relative to the anterior commissure.

### Reporting summary

Further information on research design is available in the Nature Portfolio Reporting Summary linked to this article.

### Data availability

The raw datasets are available here: unstandardized resting-state fMRI (MultiRat\_rest) (<https://doi.org/10.18112/openneuro.ds004114.v1.0.0>); standardized resting-state fMRI (StandardRat) (<https://doi.org/10.18112/openneuro.ds004116.v1.0.0>). The pre-processed volumes, time series and quality control files are available here: <https://doi.org/10.34973/1gp6-gg97>. Image pre-processing, confound correction and connectivity analysis were performed using RABIES 0.3.5 (<https://github.com/CoBrALab/RABIES> (ref. <sup>14</sup>)).

## Code availability

Jupyter notebooks demonstrating the analysis code are available under the terms of the Apache-2.0 license (<https://github.com/grandjeanlab/MultiRat>; <https://doi.org/10.5281/zenodo.7614670>).

## References

- Barrière, D. A. et al. The SIGMA rat brain templates and atlases for multimodal MRI data analysis and visualization. *Nat. Commun.* **10**, 5699 (2019).
- Papp, E. A., Leergaard, T. B., Calabrese, E., Johnson, G. A. & Bjaalie, J. G. Waxholm Space atlas of the Sprague Dawley rat brain. *Neuroimage* **97**, 374–386 (2014).
- Gorgolewski, K. J. et al. The brain imaging data structure, a format for organizing and describing outputs of neuroimaging experiments. *Sci. Data* **3**, 160044 (2016).
- Cox, R. W. AFNI: software for analysis and visualization of functional magnetic resonance neuroimages. *Comput. Biomed. Res.* **29**, 162–173 (1996).
- Avants, B., Tustison, N. J. & Song, G. Advanced Normalization Tools: V1.0. *Insight J.* <https://doi.org/10.54294/uvnhin> (2009).
- Pruim, R. H. R. et al. ICA-AROMA: a robust ICA-based strategy for removing motion artifacts from fMRI data. *Neuroimage* **112**, 267–277 (2015).
- Abraham, A. et al. Machine learning for neuroimaging with scikit-learn. *Front. Neuroinform.* **8**, 14 (2014).
- Virtanen, P. et al. SciPy 1.0: fundamental algorithms for scientific computing in Python. *Nat. Methods* **17**, 261–272 (2020).
- Vallat, R. Pingouin: statistics in Python. *J. Open Source Softw.* **3**, 1026 (2018).

## Acknowledgements

This research was enabled, in part, by support provided by Compute Ontario (<https://www.computeontario.ca/>) and Compute Canada ([www.computecanada.ca](http://www.computecanada.ca)). For the purpose of open access, we have applied a CC BY public copyright license to any Author Accepted Manuscript version arising from this submission. This research was funded by: the National Institutes of Health (K01EB023983, R03DA042971, R21AG065819, K25DA047458, I015I01CX000642-04, R01NS085200, R01MH098003, RF1MH114224, T32AA007573, R01MH067528, P30NS05219, T32GM007205, R01MH111416, R01NS078095, R01EB029857, F31 MH115656 and 1R21MH116473-01A1); the Wellcome Trust (212934/Z/18/Z, 109062/Z/15/Z, 110027/Z/15/Z, 204814/Z/16/Z and 203139/Z/16/Z); the Dutch Research Council (OCENW.KLEIN.334, O21.002.053, 016.130.662 and 016.168.038); the German Research Foundation (SA 1869/15-1, SA 2897/2-1, SFB 1436/BO6, SFB874/B3 project no.: 122679504, SFB 1280/A04 project no.: 316803389); the French National Research Agency (ANR-15-IDEX-02 and ANR-11-INBS-0006); Programa de Apoyo a Proyectos de Investigación e Innovación Tecnológica (IN212219, IA202120 and IA201622); the UK Medical Research Council (MR/N013700/1 and 1653552); the Portuguese Foundation for Science and Technology (LISBOA-01-0145-FEDER-022170 and 275-FCT-PTDC/BBB/IMG/5132/2014); the Swiss National Science Foundation (PCEFP3\_203005 and PCEFP2\_194260); King's College London, Biotechnology and Biological Sciences Research Council (BB/N009088/1); the European Community's Seventh Framework Program (FP7/2007-2013); TACTICS (278948); the Brain and Behaviour Foundation (NARSAD, 25861); the Dutch Brain Foundation (F2014(1)-06); the National Science Foundation (DMR-1644779, DMR-1533260, DMR-2128556); the Human Brain Project (945539); the Canadian Institutes of Health Research (PJT-148751, PJT-173442 and MOP-102599); the Natural Sciences and Engineering Research Council of Canada (RGPIN-2020-05917, RGPIN-375457-09 and RGPIN-2015-05103); the Horizon 2020 Framework Programme of

the European Union (740264 and 802371); the Academy of Finland (298007); the European Research Council (679058 and 802371); Innosuisse (18546.1); the Research Foundation – Flanders (12W1619N, FWO-GO48917N and GO45420N); the Stichting Alzheimer Onderzoek (SAO-FRA-20180003); Special Research Programmes (1158); CIBER-BBN; Instituto de Salud Carlos III - FEDER (PI18/00893); Versus Arthritis (20777); the Brain Behavior Foundation (25861); the Telethon Foundation (GGP19177); Eurostars (E!14985); the Brain Canada Foundation platform support grant (PSG15-3755); the National Natural Science Foundation of China (81950410637); Science Foundation Ireland (20/FFPP/8799); Trinity Foundation (RCN 20028626); Consejo Nacional de Ciencia y Tecnología Ciencia de Frontera (171874); PAPIIT-DGAPA (IA208022); Fonds de recherche du Québec – Nature et technologies; the Forrest Research Foundation; the Australian National Imaging Facility; the University of Western Australia; the National Health and Medical Research Council of the Australian Government; the Perron Institute for Neurological and Translational Science; McGill University's Faculty of Medicine; the Seaver Foundation; Autism Speaks; the Centre d'Imagerie BioMédicale of the UNIL, UNIGE, HUG, CHUV, EPFL; the Leenaards and Louis-Jeantet Foundations; the DFG Research Center for Nanoscale Microscopy and Molecular Physiology of the Brain; the Synapsis Foundation; the Simons Initiative for the Developing Brain; the Patrick Wild Centre; the Department of Biotechnology India; Utrecht University High Potential Program; ERA-NET NEURON Neuromarket; Mannheim Advanced Clinician Scientist Program; ICON – Interfaces and Interventions in Complex Chronic Conditions; the Werner Siemens Foundation; the Lisboa Regional Operational Programme; the Japan Ministry of Education, Culture, Sports, Science and Technology (MEXT); ShanghaiTech University; the Shanghai Municipal Government; and the Interdisciplinary Center for Clinical Research Münster (PIX).

## Author contributions

J.G. designed, planned and executed the study and wrote the manuscript. G.D.G., G.A.D. and M.M.C. provided the software and hardware environment for the analysis. All authors contributed experimental data and edited the manuscript. A.H. initiated the study.

## Competing interests

A.S. is an employee of Bruker, the manufacturer of preclinical MRI systems used for the acquisition of most of the datasets in this collection. E.L.B. is a consultant for Bruker. B.V. is an employee of TheraNexus. S.Z., A.D. and N.B. are employees of Novartis Pharma AG. T.N. is founder and CEO of MRI.TOOLS GmbH. The other authors declare no competing interests.

## Additional information

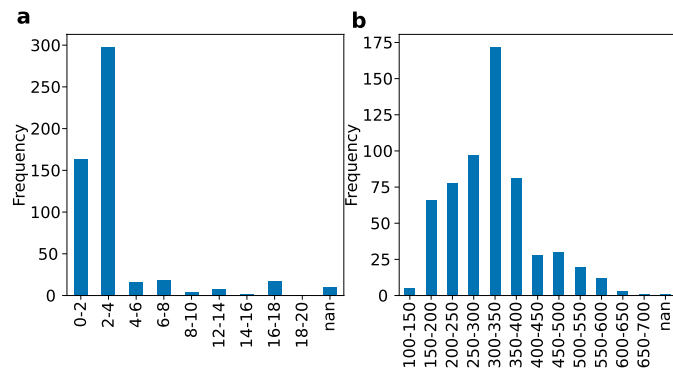
**Extended data** is available for this paper at <https://doi.org/10.1038/s41593-023-01286-8>.

**Supplementary information** The online version contains supplementary material available at <https://doi.org/10.1038/s41593-023-01286-8>.

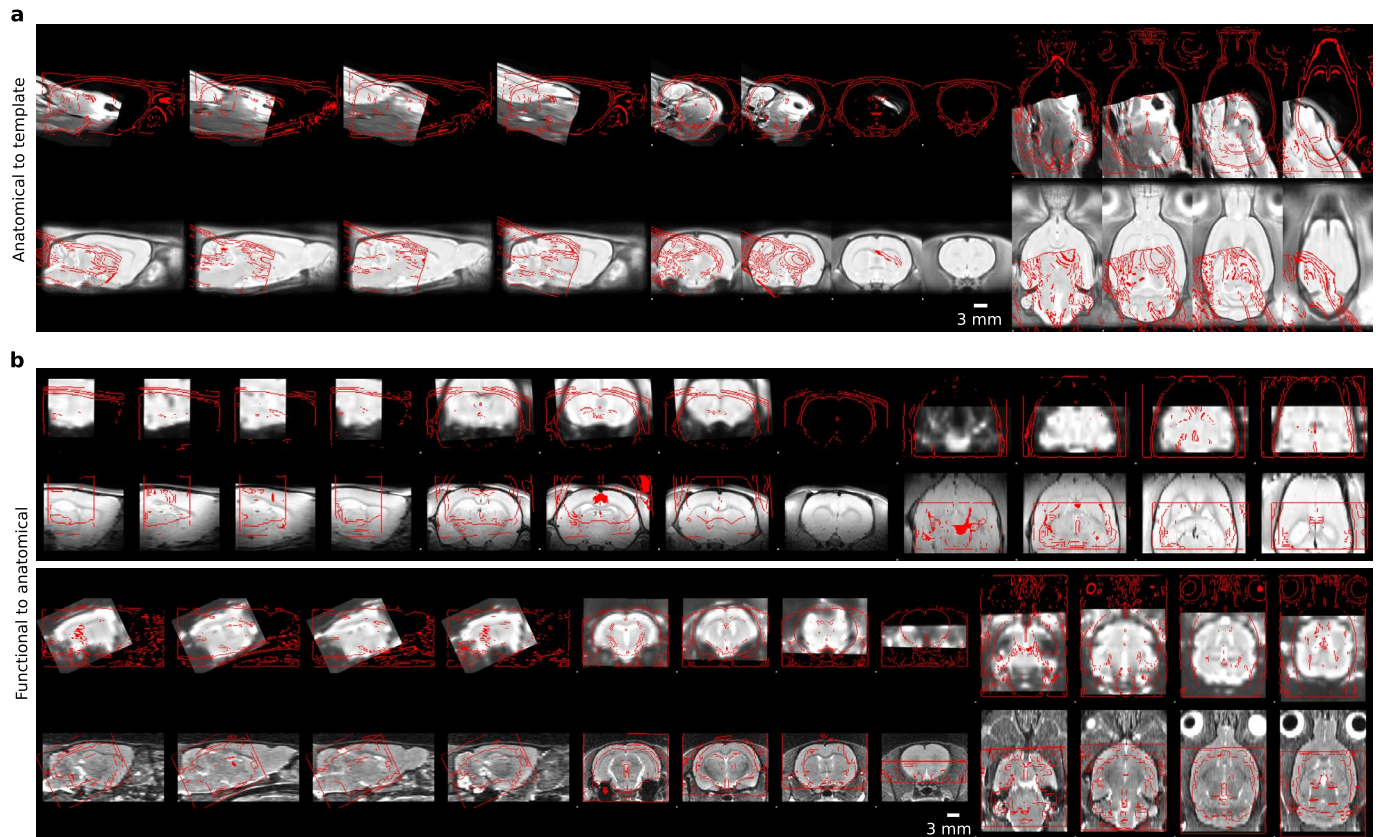
**Correspondence and requests for materials** should be addressed to Joanes Grandjean.

**Peer review information** *Nature Neuroscience* thanks Peter Klink, Afonso Silva and the other, anonymous, reviewer(s) for their contribution to the peer review of this work.

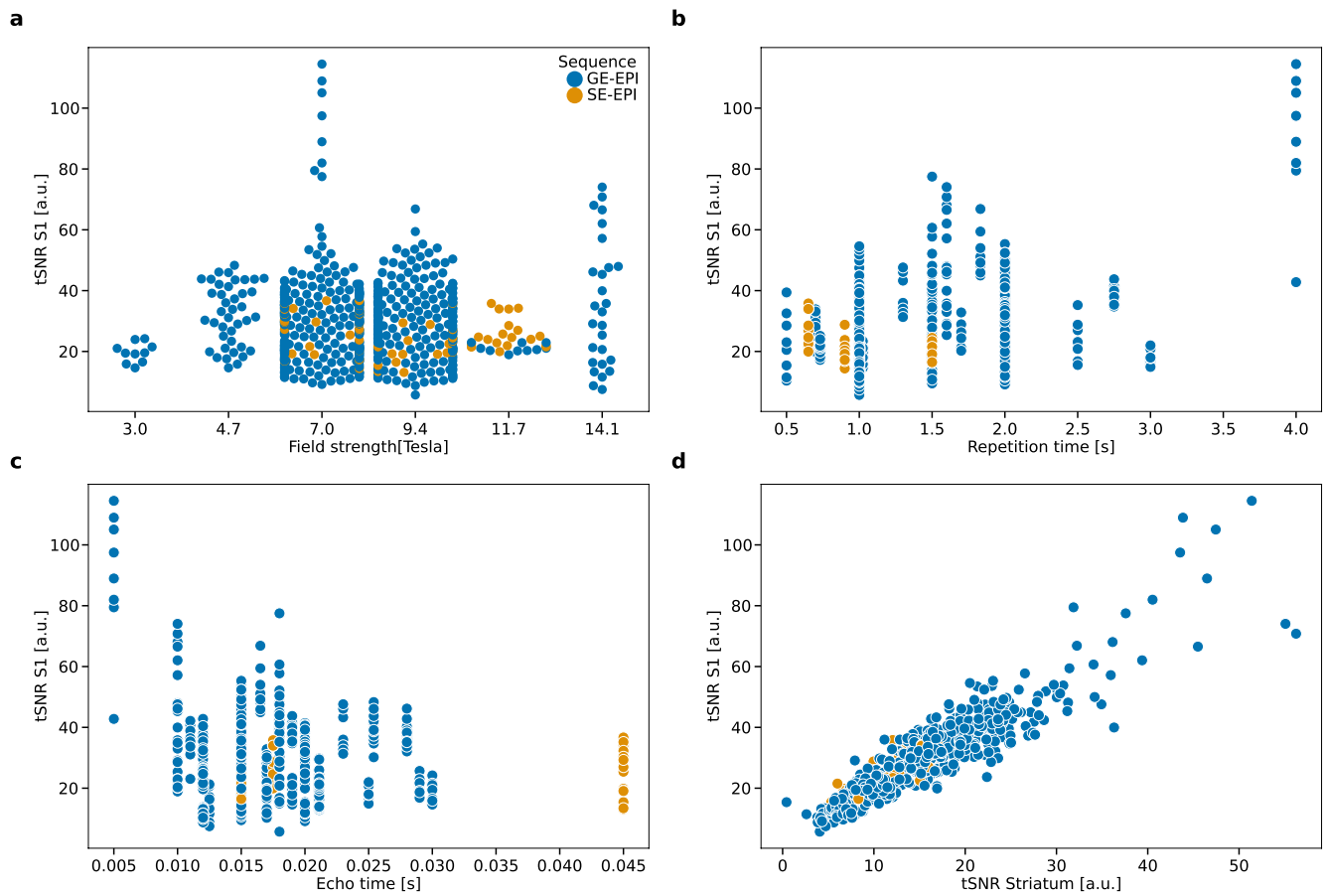
**Reprints and permissions information** is available at [www.nature.com/reprints](http://www.nature.com/reprints).



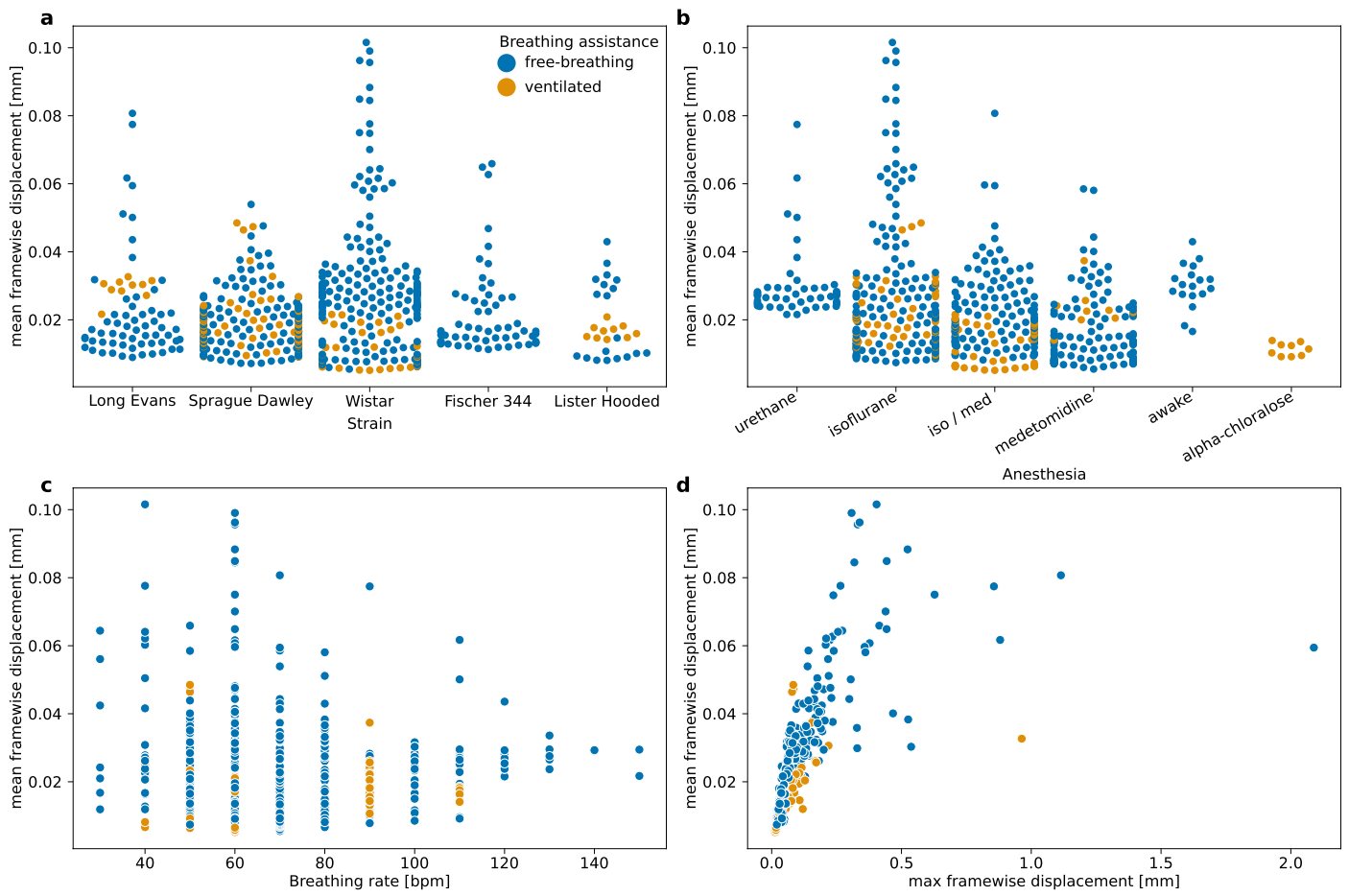
**Extended Data Fig. 1 | Age and weight distributions.** Age (a) and weight (b) distribution for the rats in the MultiRat\_rest collection.



**Extended Data Fig. 2 | Quality control examples.** Failed quality controls for anatomical to template registrations (a) and functional to anatomical registrations (b). The top rows are the moving objects, bottom rows are the reference objects. The red lines indicate the outlines of the other object. Four slices along the sagittal, axial, and coronal axis are shown for each case.

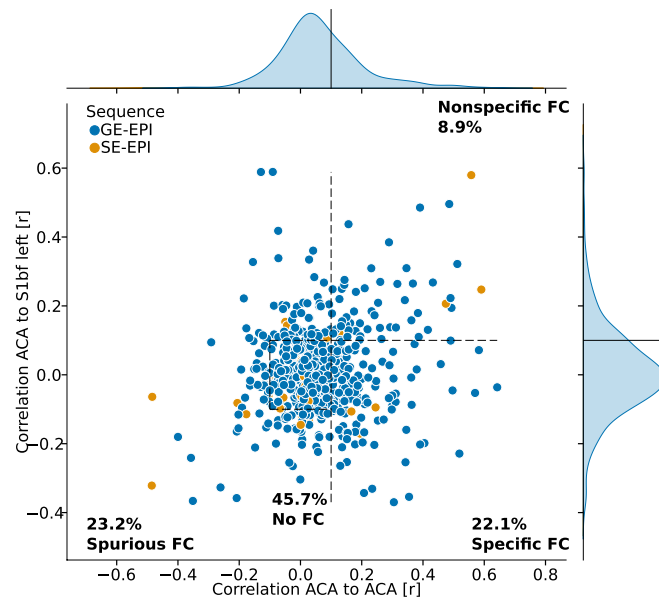


**Extended Data Fig. 3 | Temporal signal-to-noise ratio.** Temporal signal-to-noise ratio in the sensory cortex (tSNR S1) in the MultiRat\_rest dataset collection as a function of (a) magnetic field strength, (b) repetition time, (c) echo time, (d) temporal signal-to-noise ratio in the striatum.

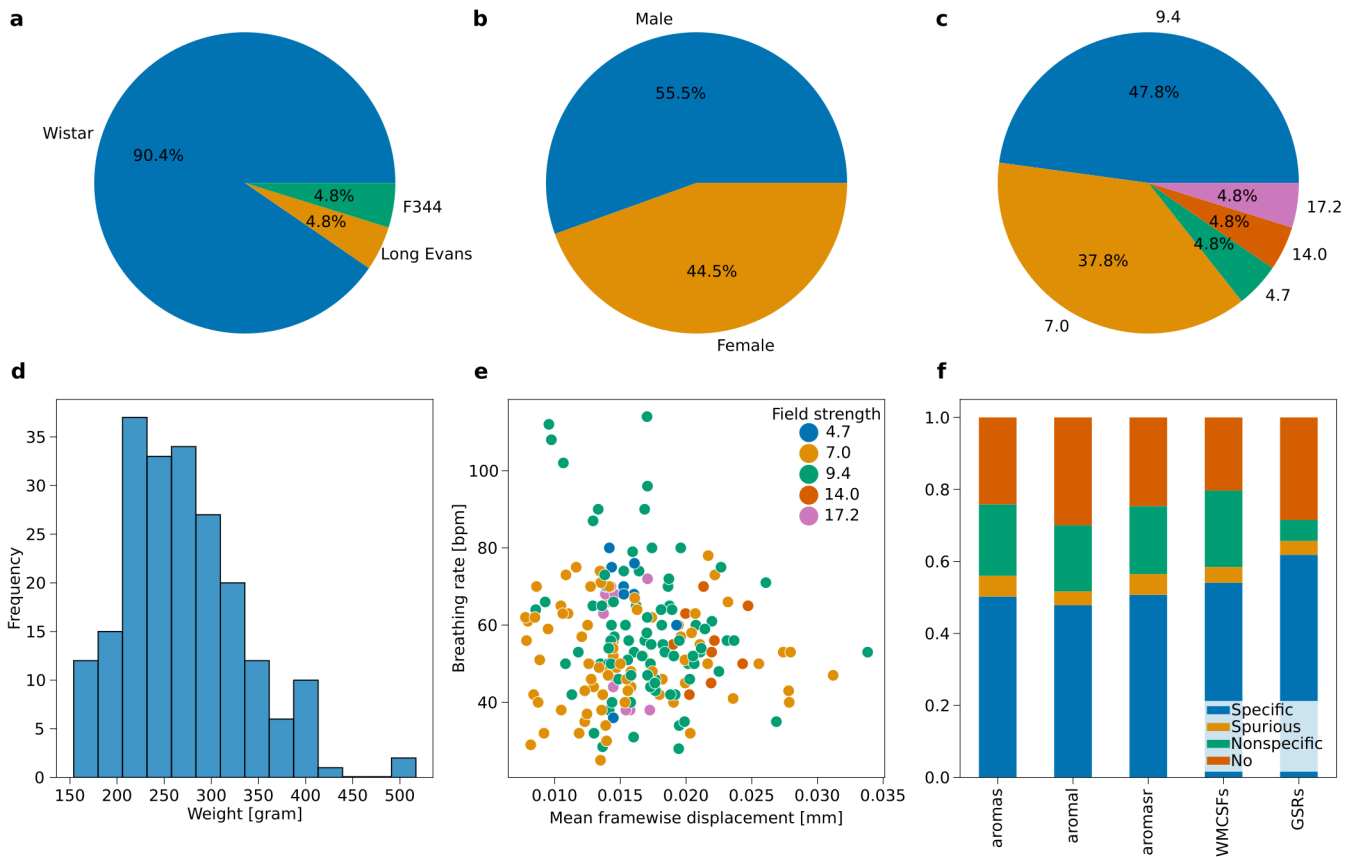


**Extended Data Fig. 4 | Framewise displacement.** MFW in the MultiRat\_rest dataset collection as a function of (a) strain, (b) anesthesia, (c) breathing rate, (d) maximal framewise displacement.

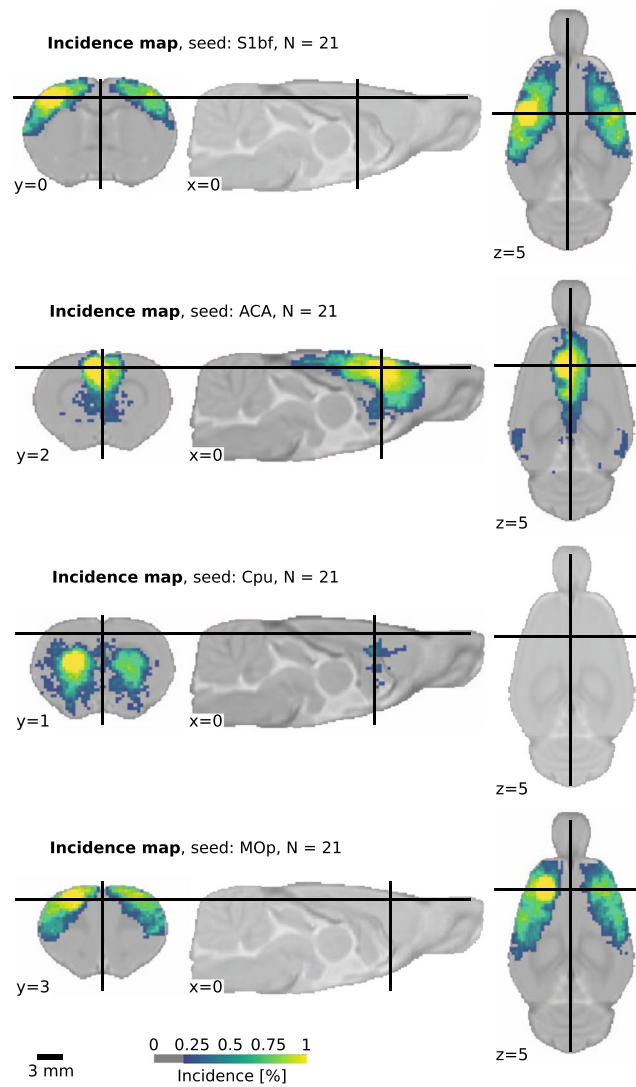




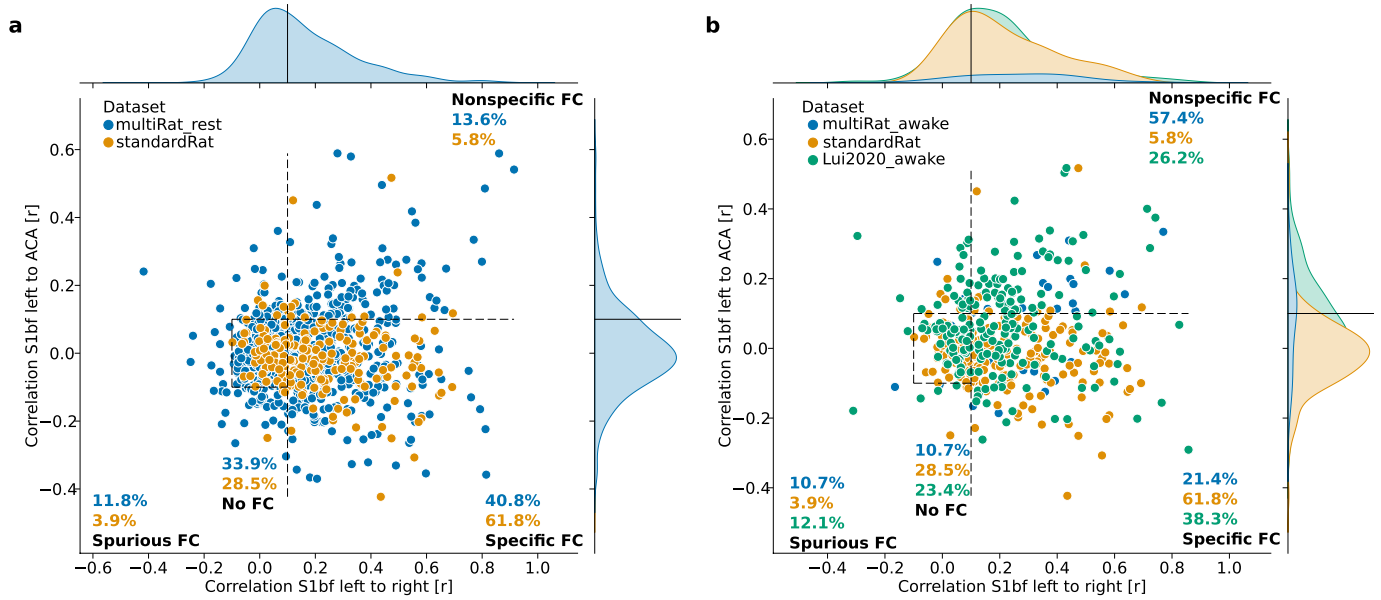
**Extended Data Fig. 5 | FC in the default-mode network.** The reference seed is positioned in the anterior cingulate cortex (Fig. 2a), the specific region-of-interest is positioned 3.3 mm posterior in the cingulate cortex and the nonspecific region-of-interest is positioned in the S1bf.



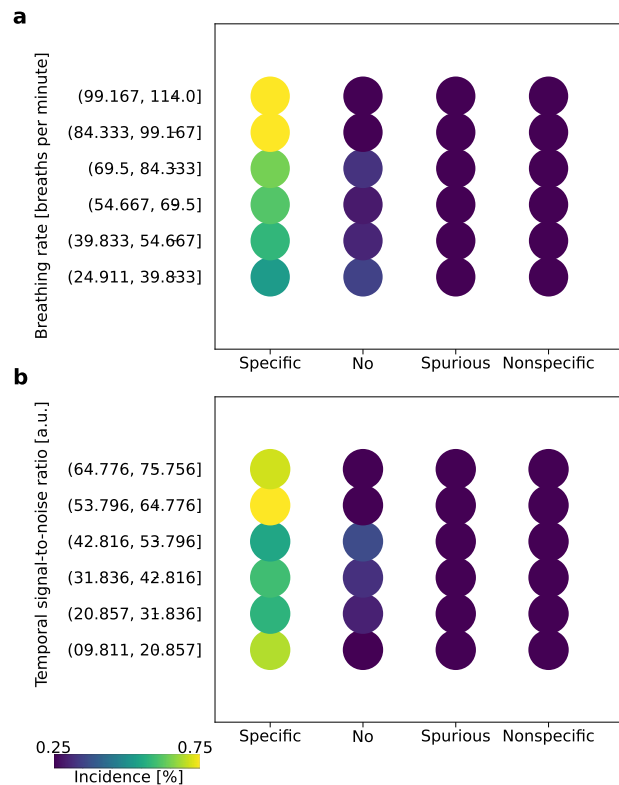
**Extended Data Fig. 6 | StandardRat dataset description. a. Strain. b. Sex. c. Field strength. d. Weight. e. Breathing rate as a function of MFW. f. FC specificity as a function of confound correction models.**



**Extended Data Fig. 7 | FC incidence.** Incidence of FC at the group level in the StandardRat collection for four selected seeds ( $n = 21$  datasets,  $n = 10$  subjects per dataset). Connectivity incidence is improved in the StandardRat collection relative to MultiRat\_rest (Fig. 3).

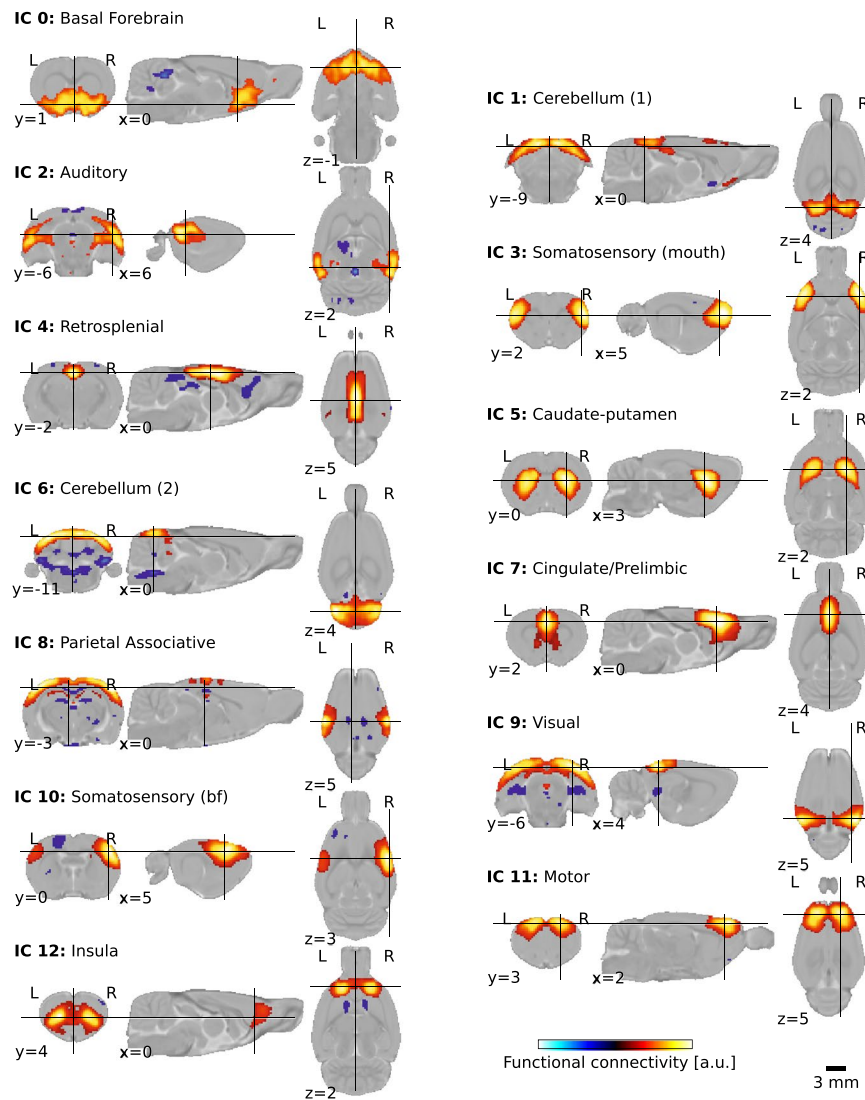


**Extended Data Fig. 8 | Between-datasets connectivity comparisons.** FC category comparison between MultiRat\_rest and StandardRat (**a**) and between the awake datasets of MultiRat\_rest and the awake dataset from Lui et al. 2020 (**b**).



**Extended Data Fig. 9 | Connectivity specificity as a function of breathing rate and signal-to-noise ratio.** FC specificity as a function of binned breathing rate (**a**) AND temporal signal-to-noise ratio (**b**) in the StandardRat collection. The percentage of each condition is size and color-coded. High levels of connectivity specificity were achieved in scans where the breathing rates were in the 84 to 114

bpm range. Similarly, higher connectivity specificity incidences were found when the cortical temporal signal-to-noise ratio was  $> 53$ . These observations support the notion of an optimal breathing rate when applying the StandardRat protocol, along with temporal signal-to-noise ratio and movement targets.



**Extended Data Fig. 10 | Group independent components analysis.** Plausible independent components overlapping with known rodent networks, obtained after group-level decomposition with  $n = 20$  components. Labels are based on the SIGMA anatomical atlas.

## Reporting Summary

Nature Portfolio wishes to improve the reproducibility of the work that we publish. This form provides structure for consistency and transparency in reporting. For further information on Nature Portfolio policies, see our [Editorial Policies](#) and the [Editorial Policy Checklist](#).

### Statistics

For all statistical analyses, confirm that the following items are present in the figure legend, table legend, main text, or Methods section.

n/a | Confirmed

- The exact sample size ( $n$ ) for each experimental group/condition, given as a discrete number and unit of measurement
- A statement on whether measurements were taken from distinct samples or whether the same sample was measured repeatedly
- The statistical test(s) used AND whether they are one- or two-sided  
*Only common tests should be described solely by name; describe more complex techniques in the Methods section.*
- A description of all covariates tested
- A description of any assumptions or corrections, such as tests of normality and adjustment for multiple comparisons
- A full description of the statistical parameters including central tendency (e.g. means) or other basic estimates (e.g. regression coefficient) AND variation (e.g. standard deviation) or associated estimates of uncertainty (e.g. confidence intervals)
- For null hypothesis testing, the test statistic (e.g.  $F$ ,  $t$ ,  $r$ ) with confidence intervals, effect sizes, degrees of freedom and  $P$  value noted  
*Give  $P$  values as exact values whenever suitable.*
- For Bayesian analysis, information on the choice of priors and Markov chain Monte Carlo settings
- For hierarchical and complex designs, identification of the appropriate level for tests and full reporting of outcomes
- Estimates of effect sizes (e.g. Cohen's  $d$ , Pearson's  $r$ ), indicating how they were calculated

*Our web collection on [statistics for biologists](#) contains articles on many of the points above.*

### Software and code

Policy information about [availability of computer code](#)

Data collection

Data analysis

All manuscripts utilizing custom algorithms or software that are central to the research but not yet described in published literature, software must be made available to editors and reviewers. We strongly encourage code deposition in a community repository (e.g. GitHub). See the Nature Portfolio [guidelines for submitting code & software](#) for further information.

### Data

Policy information about [availability of data](#)

All manuscripts must include a [data availability statement](#). This statement should provide the following information, where applicable:

- Accession codes, unique identifiers, or web links for publicly available datasets
- A description of any restrictions on data availability
- For clinical datasets or third party data, please ensure that the statement adheres to our [policy](#)

## Human research participants

Policy information about [studies involving human research participants and Sex and Gender in Research](#).

Reporting on sex and gender	<input type="text" value="na"/>
Population characteristics	<input type="text" value="na"/>
Recruitment	<input type="text" value="na"/>
Ethics oversight	<input type="text" value="na"/>

Note that full information on the approval of the study protocol must also be provided in the manuscript.

## Field-specific reporting

Please select the one below that is the best fit for your research. If you are not sure, read the appropriate sections before making your selection.

Life sciences       Behavioural & social sciences       Ecological, evolutionary & environmental sciences

For a reference copy of the document with all sections, see [nature.com/documents/nr-reporting-summary-flat.pdf](https://www.nature.com/documents/nr-reporting-summary-flat.pdf)

## Life sciences study design

All studies must disclose on these points even when the disclosure is negative.

Sample size	<input type="text" value="n = 10 per dataset. This value is based on pre-existing data availability in the participating laboratories"/>
Data exclusions	<input type="text" value="Unsuitability for preprocessing (e.g., dedicated image reconstruction needs, restricted field-of-view), image misregistration, excessive motion, and missing or corrupted data"/>
Replication	<input type="text" value="All dataset and code is released under permissive licenses to allow replication of the analysis"/>
Randomization	<input type="text" value="The study consist of an analysis after the acquisition of the data. Randomization is not applicable."/>
Blinding	<input type="text" value="The experimenter was blind to the origin of the data during the analysis"/>

## Reporting for specific materials, systems and methods

We require information from authors about some types of materials, experimental systems and methods used in many studies. Here, indicate whether each material, system or method listed is relevant to your study. If you are not sure if a list item applies to your research, read the appropriate section before selecting a response.

### Materials & experimental systems

n/a	Involvement in the study
<input checked="" type="checkbox"/>	<input type="checkbox"/> Antibodies
<input checked="" type="checkbox"/>	<input type="checkbox"/> Eukaryotic cell lines
<input checked="" type="checkbox"/>	<input type="checkbox"/> Palaeontology and archaeology
<input type="checkbox"/>	<input checked="" type="checkbox"/> Animals and other organisms
<input checked="" type="checkbox"/>	<input type="checkbox"/> Clinical data
<input checked="" type="checkbox"/>	<input type="checkbox"/> Dual use research of concern

### Methods

n/a	Involvement in the study
<input checked="" type="checkbox"/>	<input type="checkbox"/> ChIP-seq
<input checked="" type="checkbox"/>	<input type="checkbox"/> Flow cytometry
<input type="checkbox"/>	<input checked="" type="checkbox"/> MRI-based neuroimaging

## Animals and other research organisms

Policy information about [studies involving animals; ARRIVE guidelines](#) recommended for reporting animal research, and [Sex and Gender in Research](#)

Laboratory animals	<input type="text" value="Rats; Sprague Dawley, Long Evans, Wistar, Fischer 344, Lister Hooded; 0 to 20 months"/>
Wild animals	<input type="text" value="No wild animals were used"/>



Reporting on sex	Sex effect was tested
Field-collected samples	No field collected sampled were used
Ethics oversight	<p>This study was approved by the authorities of:</p> <p>Radboudumc, The Netherlands;  Univ. Grenoble Alpes, France;  The University of Western Australia, Australia;  University of Queensland, Australia;  Brigham and Women's Hospital, USA;  McGill University, Canada;  University Hospital Münster, Germany;  University of Florida, USA;  University of Eastern Finland, Finland;  German Primate Center - Leibniz Institute for Primate Research, Germany;  Icahn School of Medicine at Mount Sinai, USA;  Max-Delbrück Center for Molecular Medicine in the Helmholtz Association, Germany;  École polytechnique fédérale de Lausanne, Switzerland;  Universidad Nacional Autónoma de México, Mexico;  The University of Edinburgh, UK;  King's College London, UK;  Pennsylvania State University, USA;  Tohoku University, Japan;  Max Planck Institute for Biological Cybernetics, USA;  University and ETH Zurich, Switzerland;  Trinity College Dublin, Ireland;  University of Antwerp, Belgium;  University Medical Center Utrecht, Netherlands;  The University of North Carolina at Chapel Hill, USA;  University of Barcelona, Spain;  Ghent University, Belgium;  Yale University School of Medicine, USA;  University of Nottingham, UK;  Institute of Automation, Chinese Academy of Sciences, China;  University of Cambridge, UK;  Amsterdam UMC location University of Amsterdam, Netherlands;  CEA Saclay, France;  FAU Erlangen-Nürnberg, Germany;  Champalimaud Centre for the Unknown, Portugal;  University of Guelph, Canada;  Emory University/Georgia Institute of Technology, USA;  Istituto di Ricerche Farmacologiche Mario Negri, IRCCS, Italy;  Novartis Institutes for BioMedical Research, Switzerland;  Ruhr University Bochum, Germany;  Northeastern University, USA;</p>

Note that full information on the approval of the study protocol must also be provided in the manuscript.

## Magnetic resonance imaging

### Experimental design

Design type	resting-state
Design specifications	One run and one session per subject.
Behavioral performance measures	na

### Acquisition

Imaging type(s)	functional
Field strength	3 to 17.6T
Sequence & imaging parameters	Gradient and spin echo echo-planar imaging
Area of acquisition	Whole-brain
Diffusion MRI	<input type="checkbox"/> Used <input checked="" type="checkbox"/> Not used

## Preprocessing

Preprocessing software	RABIES 0.3.5 default parameters
Normalization	ANTs 2.3.5
Normalization template	SIGMA rat template
Noise and artifact removal	RABIES 0.3.5 default parameters
Volume censoring	na

## Statistical modeling & inference

Model type and settings	Chi-square test between categorical data
Effect(s) tested	Differences in the expected distribution of the functional connectivity categories
Specify type of analysis:	<input checked="" type="checkbox"/> Whole brain <input type="checkbox"/> ROI-based <input type="checkbox"/> Both
Statistic type for inference (See <a href="#">Eklund et al. 2016</a> )	Effect size and confidence intervals
Correction	na

## Models & analysis

n/a	Involvement in the study
<input type="checkbox"/>	<input checked="" type="checkbox"/> Functional and/or effective connectivity
<input checked="" type="checkbox"/>	<input type="checkbox"/> Graph analysis
<input checked="" type="checkbox"/>	<input type="checkbox"/> Multivariate modeling or predictive analysis
Functional and/or effective connectivity	Pearson's correlation