



**HAL**  
open science

## Role of the interstitium during septic shock: a key to the understanding of fluid dynamics?

Auguste Dargent, Hugo Dumargne, Marie Labruyère, Stéphane Brézillon, S Brassart-Pasco, Mathieu Blot, Pierre-Emmanuel Charles, Isabelle Fournel, Jean-Pierre Quenot, Marine Jacquier

### ► To cite this version:

Auguste Dargent, Hugo Dumargne, Marie Labruyère, Stéphane Brézillon, S Brassart-Pasco, et al.. Role of the interstitium during septic shock: a key to the understanding of fluid dynamics?. *Journal of Intensive Care*, 2023, 11 (1), pp.44. 10.1186/s40560-023-00694-z . hal-04268684

**HAL Id: hal-04268684**

**<https://hal.science/hal-04268684>**

Submitted on 3 Nov 2023

**HAL** is a multi-disciplinary open access archive for the deposit and dissemination of scientific research documents, whether they are published or not. The documents may come from teaching and research institutions in France or abroad, or from public or private research centers.

L'archive ouverte pluridisciplinaire **HAL**, est destinée au dépôt et à la diffusion de documents scientifiques de niveau recherche, publiés ou non, émanant des établissements d'enseignement et de recherche français ou étrangers, des laboratoires publics ou privés.

REVIEW

Open Access



# Role of the interstitium during septic shock: a key to the understanding of fluid dynamics?

Auguste Dargent<sup>1,2\*</sup> , Hugo Dumargne<sup>1</sup>, Marie Labruyère<sup>3</sup>, Stéphane Brezillon<sup>4</sup>, Sylvie Brassart-Pasco<sup>4</sup>, Mathieu Blot<sup>5,6</sup>, Pierre-Emmanuel Charles<sup>3,6</sup>, Isabelle Fournel<sup>7</sup>, Jean-Pierre Quenot<sup>3,6,7</sup> and Marine Jacquier<sup>3,6</sup>

## Abstract

**Background** While not traditionally included in the conceptual understanding of circulation, the interstitium plays a critical role in maintaining fluid homeostasis. Fluid balance regulation is a critical aspect of septic shock, with a well-known association between fluid balance and outcome. The regulation of transcapillary flow is the first key to understand fluid homeostasis during sepsis.

**Main text** Capillary permeability is increased during sepsis, and was classically considered to be necessary and sufficient to explain the increase of capillary filtration during inflammation. However, on the other side of the endothelial wall, the interstitium may play an even greater role to drive capillary leak. Indeed, the interstitial extracellular matrix forms a complex gel-like structure embedded in a collagen skeleton, and has the ability to directly attract intravascular fluid by decreasing its hydrostatic pressure. Thus, interstitium is not a mere passive reservoir, as was long thought, but is probably major determinant of fluid balance regulation during sepsis. Up to this date though, the role of the interstitium during sepsis and septic shock has been largely overlooked. A comprehensive vision of the interstitium may enlight our understanding of septic shock pathophysiology. Overall, we have identified five potential intersections between septic shock pathophysiology and the interstitium: 1. increase of oedema formation, interacting with organ function and metabolites diffusion; 2. interstitial pressure regulation, increasing transcapillary flow; 3. alteration of the extracellular matrix; 4. interstitial secretion of inflammatory mediators; 5. decrease of lymphatic outflow.

**Conclusions** We aimed at reviewing the literature and summarizing the current knowledge along these specific axes, as well as methodological aspects related to interstitium exploration.

**Keywords** Interstitium, Septic shock, Microcirculation, Capillary leak, Extracellular matrix

\*Correspondence:

Auguste Dargent  
auguste.dargent@chu-lyon.fr

<sup>1</sup> Service d'Anesthésie Médecine Intensive-Réanimation, Hospices Civils de Lyon, Hôpital Lyon Sud, 165 Chemin du Grand Revoyet, Pierre-Bénite, 69495 Lyon, France

<sup>2</sup> APCSe VetAgro Sup UPSP 2016.A101, 1 Avenue Bourgelat, 69280 Marcy l'Etoile, France

<sup>3</sup> Médecine Intensive et Réanimation, CHU François Mitterrand, 14 Rue Paul Gaffarel, 21000 Dijon, France

<sup>4</sup> UMR CNRS/URCA 7369, MEDyC, 51 Rue Cognacq-Jay, 51096 Reims, France

<sup>5</sup> Maladies Infectieuses et Tropicales, CHU François Mitterrand, 14 Rue Paul Gaffarel, 21000 Dijon, France

<sup>6</sup> Lipness Team, INSERM LNC-UMR1231 et LabEx LipSTIC, Université de Bourgogne, 7 Bd Jeanne d'Arc, 21000 Dijon, France

<sup>7</sup> Module Épidémiologie Clinique, Inserm, CHU Dijon, Bourgogne, Université de Bourgogne, CIC1432, 14 Rue Paul Gaffarel, 21000 Dijon, France



© The Author(s) 2023. **Open Access** This article is licensed under a Creative Commons Attribution 4.0 International License, which permits use, sharing, adaptation, distribution and reproduction in any medium or format, as long as you give appropriate credit to the original author(s) and the source, provide a link to the Creative Commons licence, and indicate if changes were made. The images or other third party material in this article are included in the article's Creative Commons licence, unless indicated otherwise in a credit line to the material. If material is not included in the article's Creative Commons licence and your intended use is not permitted by statutory regulation or exceeds the permitted use, you will need to obtain permission directly from the copyright holder. To view a copy of this licence, visit <http://creativecommons.org/licenses/by/4.0/>. The Creative Commons Public Domain Dedication waiver (<http://creativecommons.org/publicdomain/zero/1.0/>) applies to the data made available in this article, unless otherwise stated in a credit line to the data.

## Background

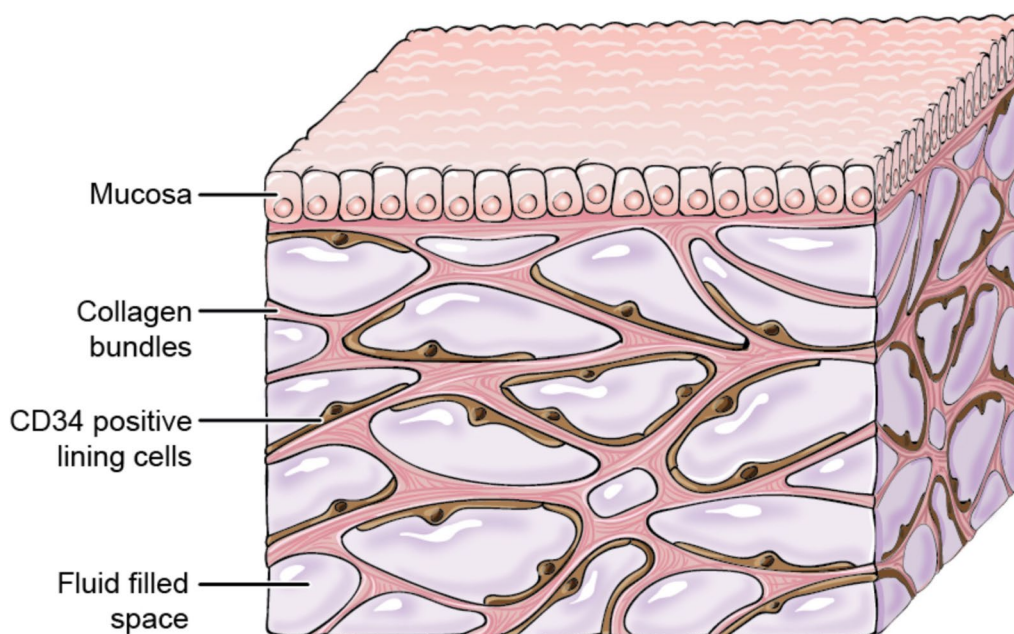
Interstitialium can be defined as the interstitial, often virtual space existing between cells of any given tissue, but it is also a structured tissue in its own right. Advances in *in vivo* microscopy allowed the description of large anatomical spaces with thick collagen bundles delimiting fluid-filled polygons (Fig. 1), especially developed in the subcutis and the digestive tract submucosae [1]. Comprising around 20% of body weight [2], interstitium is mostly referred to as a fluid compartment, counterpart of the vascular compartment, from which it is separated by the capillary wall. Interstitium is not traditionally included in the conceptual understanding of circulation. However, between the cardiovascular and lymphatic system, interstitium is the essential link in the continuous fluid circulation that maintains homeostasis through the whole body (conveying metabolic substrates, waste products and immune mediators). The continuous transfer of fluids between the blood and interstitial compartment is governed by the so-called Starling forces. During sepsis and septic shock, acute changes in Starling forces lead to intense capillary leakage [3], responsible for the hypovolemia which characterizes the early phase of septic shock [4]. The development of diffuse oedema, a common feature of the later phase of septic shock, is also directly related to capillary leakage [5], although this relationship is

masked by the delayed clinical recognition of oedema. Sepsis-induced oedema is aggravated by fluid therapy and is mostly referred to as fluid overload. It has been identified in recent years as a major prognostic factor for morbidity and mortality in patients with septic shock [6, 7].

As septic shock patients can gain up to one-third of their weight in a few days due to interstitium expansion, this “third space” deserves closer attention and should be understood as a whole by the intensivist. The interstitium has long been neglected and considered as a passive reservoir, whereas the vascular compartment was the only focus. Major physiology discoveries were made in the past decades, revealing how the interstitium plays a major role during acute inflammation, especially in regulating capillary filtration [8].

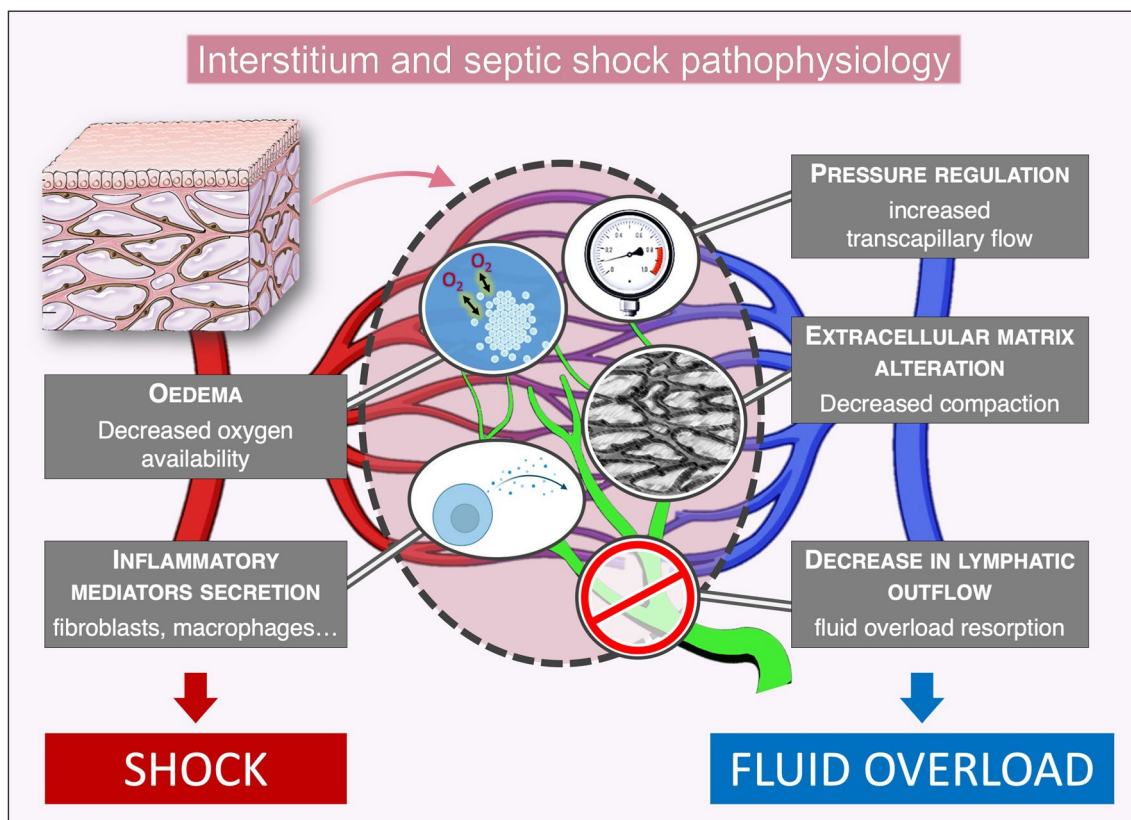
Overall, we have identified five potential intersections between septic shock pathophysiology and interstitium (Fig. 2): 1. increase of oedema formation, interacting with organ function and metabolites diffusion; 2. interstitial pressure self-regulation, increasing transcapillary flow; 3. alteration of the extracellular matrix (ECM); 4. interstitial secretion of inflammatory mediators; 5. decrease of lymphatic outflow.

To shed light on the potential role of the interstitium in the pathophysiology of septic shock, we aimed at reviewing the literature and summarizing the current



J Gregory ©2018 Mount Sinai Health System

**Fig. 1** Three-dimensional structure of the interstitium. Schematic of the fluid-filled space supported by a network of collagen bundles lined on one side with cells. Illustration by Jill Gregory. Printed with permission from Mount Sinai Health System, licenced under CC-BY-ND. (<https://creativecommons.org/licenses/by-nd/4.0/legalcode>)



**Fig. 2** Proposed mechanisms by which interstitium may interact with sepsis pathophysiology. Diagram representing the interstitial compartment, surrounding the capillary bed (red: arterial side, blue: venous side). Lymphatic vessels appear in green

knowledge along these specific axes, as well as methodological aspects related to interstitium exploration.

### Interstitium anatomy and histology

The interstitium is traditionally defined as a fluid compartment, separating blood vessels and cells. It was recently shown that the interstitial space was continuous across tissue and organ boundaries, allowing movement of particles between layers of the colonic wall or through subcutis and fascia [9]. An interstitial tissue is found in every organ, but its extent varies a lot between different “mother” tissues. The structure and composition of the interstitium may also vary, but remains similar in the interstitia surrounding peripheral blood vessels and loose connective tissue associated with dermal and glandular basal membranes [10]. Although interstitium composition has been known for long, its three-dimensional structure was only observed recently, especially thanks to the progress of in vivo microscopy (Fig. 1) [1]. Typically, the extracellular matrix (ECM) is scaffolded by a three-dimensional fibrous collagen network, in which collagen fibres form thick, 20 µm wide bundles. A microfibril–elastin framework is also attached to

collagen bundles, uniformly distributing the stress to the structure [11]. The ground substance is formed from proteoglycans, composed from glycosaminoglycans (GAGs) covalently linked to a core protein, but also the free GAG hyaluronan. GAGs are long, linear structures comprising repeated disaccharide units. They are highly polar and attract water, forming gel-like structures. GAGs interact with the collagen structure of the ECM but are also found unbound in the interstitial fluid. The interstitial fluid itself is an ultrafiltrate from plasma with about 50% of its protein concentration [8]. The ECM is lined and supported by mesenchymal cells [1].

### Oedema formation: genesis and consequences of acute interstitial oedema

When inflammation is present in a circumscribed area, vascular flow and permeability are regionally increased to enable rapid recruitment of humoral (e.g., antibodies, complement) and cellular elements (neutrophils, monocytes), required to control the pathogens. During sepsis, global hyperactivation of innate immunity results in diffuse endothelial alterations leading to macro- and micro-circulatory dysfunction. Endothelial barrier alteration is

probably the most relevant consequence at the capillary level, with impairment of each strata of the endothelial wall, enabling capillary leak [12]. VE-cadherin is a major component of endothelial intercellular junctions. Its internalisation, prompted by inflammatory cytokines (TNF- $\alpha$ , IL-1 $\beta$ , IL-6, and IL-10) is alone sufficient to break down intercellular junctions, thereby enhancing vascular permeability [13, 14], which is also influenced by other factors, such as glycocalyx alterations [15, 16]. Vascular permeability is often cited as both necessary and sufficient to drive and sustain capillary leak during septic shock. However, it should be kept in mind that other “forces” are at play and drive sepsis-associated fluid overload.

### Starling principles

The pathophysiology of capillary filtration, and thereby of oedema formation was first described by Ernest Henry Starling in 1896 [17]. Transcapillary filtration occurs as a function of various factors expressed in the following formula:

$$J_v = K_f \cdot (P_c - P_i) - \sigma[\pi_c - \pi_i] = K_f \cdot \Delta P_f$$

where:

$J_v$  is the trans-endothelial filtration volume per second;  $K_f$  is the coefficient of filtration of the membrane,  $P_c$  is the capillary hydrostatic pressure,  $P_i$  is the interstitial hydrostatic pressure,  $\pi_c$  is capillary colloid osmotic pressure (COP),  $\pi_i$  is the interstitial colloid osmotic pressure,  $\sigma$  is the reflection coefficient for plasma proteins, and  $\Delta P_f$  is the net filtration pressure.

Capillary hydrostatic pressure declines, from around 30–40 mmHg at the end of the arterioles to 10–15 mmHg at the venular end. Plasma and interstitial oncotic pressure are, respectively, around 28 and 8 mmHg [18]. Normal interstitial pressure is slightly negative, at between –1 and –3 mmHg [19]. The classic view of the Starling principle predicted that absorption of fluid (from interstitium to vascular lumen) should occur at the venular end of the capillary, due to the drop in  $P_c$  and  $\pi_i$  at this point, and compensate in part the filtrated volume [20]. This classical view was revised by Levick and Michel in 2010, based on extensive prior experimental data, and leading to the “no steady-state filtration” rule [21]. Indeed, they showed that that  $\pi_i$  could be replaced in the classic Starling formula by sub-glycocalyx COP ( $\pi_g$ ), considering that the protein-reflecting element in the endothelial barrier was actually the glycocalyx fibre-matrix, acting like an ultrafiltrating sieve [22]. Due to the high velocity flow in intercellular clefts, interstitial proteins cannot diffuse back through the subglycocalyx space, and  $\pi_g$  remains lower than  $\pi_i$  (around 10%) but constant [21], whereas the classical view considered interstitial pressures as

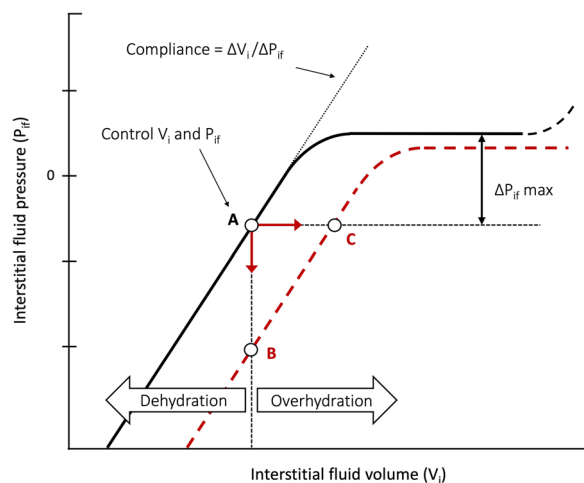
negligible. This explains the absence of observed filtration despite  $P_c$  decreasing below  $\pi_c$  in venules at steady state [23]. However, transient absorption can still occur, e.g., during haemorrhage, due to dramatic decrease in  $P_c$  and increasing  $\pi_c$ . Absorption is also naturally occurring in intestinal mucosa and renal peritubular interstitium [24].

### Oedema preventing factors

Thus, the revised Starling principle states that lymphatic drainage equals transcapillary filtration at steady state. Oedema formation is then due to an imbalance between increased capillary filtration and/or lowered lymphatic outflow. In physiology, the mechanisms protecting against oedema have been abundantly described, notably by Guyton [19]. First, an increase in capillary filtration augments the interstitial volume by reducing interstitial oncotic pressure by dilution, which in turn reduces filtration [21]. Another protective factor against oedema formation is interstitial compliance, defined as the variation of interstitial pressure ( $\Delta P_{if}$ ) obtained with a given increase in interstitial volume ( $\Delta V_i$ ) [25], and which is specific to each tissue. In a baseline state of dehydration and in the initial phase of overhydration, the shape of the volume–pressure curve is linear, which protects the tissue against oedema formation (Fig. 3, solid line). When there is extreme overhydration, compliance is potentially infinite, and a plateau of the volume–pressure curve is observed in skin and muscle interstitium [26]. The subcutaneous interstitial tissue is especially compliant and can accumulate a large volume of oedema [8]. During fluid overload, the exact contribution of the subcutaneous interstitium to the total volume is difficult to assess, but it could be above 50%, as skin and muscle already accounts, during steady state, for two-thirds of the total extracellular volume [26].

### Fluid overload, an expression of capillary leak and prognostic factor during septic shock

During initial management of septic shock, high volumes of resuscitation fluids are often needed to compensate for the capillary leak [27]. Oedema accumulates in all tissues, especially subcutaneous tissue [28, 29], and reflects the intensity of capillary leak. The development of oedema (i.e., fluid overload) has been identified in recent years as a major prognostic factor for morbidity and mortality in patients with septic shock [6, 7]. Yet, the nature of the link between fluid overload and poor outcome is not yet fully understood. First, it can be argued that the intensity of capillary leak at the acute phase is directly related to the severity of shock [5]. However, in most of the numerous studies finding this association, mortality was adjusted on initial shock severity [30]. In



**Fig. 3** Interstitium pressure–volume relationship during homeostasis and inflammation. General shape of interstitial volume–pressure relationship (solid line) with normal values for interstitial volume ( $V_i$ ) and pressure ( $P_{if}$ ) (A). Compliance ( $\Delta V_i/\Delta P_{if}$ ) is constant in dehydration and in the initial part of overhydration. Compliance then increases to infinity (plateau in the P/V curve), after a maximal rise in  $P_{if}$  ( $\Delta P_{if}$  max) is obtained (reflecting maximal counterpressure toward filtration). Compliance decreases again at excessive increase of interstitial fluid volume [2]. During inflammation, this relationship shifts (red dashed line). If filtration is impeded (thus preventing an increase in volume), e.g., by capillary flow interruption,  $P_{if}$  falls abruptly (B). If capillary flow is maintained, filtration rate may increase 10–20-fold and  $V_i$  can expand rapidly with little change in pressure (C) [116]

addition, observational studies in patients with septic shock determined that patients with negative fluid balance had better outcomes [31, 32], suggesting that interstitial oedema may cause harm in itself. Interstitial oedema increases intercellular spaces and has long been recognized as a critical factor for tissue oxygenation [33]. Indeed, the dioxygen molecule ( $O_2$ ) is an “hydrophobic”, nonpolar molecule, with low solubility and diffusivity in water, which makes its diffusion through aqueous media such as interstitial fluid and cytoplasm a challenge. It is thought that oxygen diffusion is helped through “hydrophobic channeling” via networked lipids, especially for intracellular diffusion [34]. Thus, interstitial oedema with increased diffusion distance could indeed be a prominent factor in the sepsis-associated decreased oxygen extraction and impaired metabolism [35]. Another link between interstitial oedema and outcome can be found in the direct contribution of oedema to organ dysfunction, as seen in acute respiratory distress syndrome (ARDS) [36], but also in acute kidney injury [37]. Some authors also described that fluid overload is a risk factor for the development of abdominal compartment syndrome [38].

In the light of these data, the reduction of fluid overload has become a primary therapeutic target. Fluid

restriction is currently the main candidate therapeutic strategy aimed at reducing fluid overload. A meta-analysis of studies published between 2015 and 2020 did not find any significant benefit, whether on all-cause mortality or secondary outcomes, such as acute kidney injury or lung injury [39]. In 2022, Meyhoff and al. reported the results of the CLASSIC trial, which also did not find any difference in mortality (nor any secondary outcomes) between a restrictive and a liberal fluid strategy [40]. The CLOVERS trial, published in 2023, confirmed these findings with no difference in mortality, and an increased vasopressor use in the restrictive group with (non-significantly) increased adverse events [41]. Overall, the effect of the intervention on fluid balance was low and not always statistically significant. The negative results of these trials underline the complexity of this issue, and suggest that the approach of fluid restriction is probably not appropriate.

#### Interstitial fluid assessment: interstitial volume

Oedema begins to form very early, but becomes apparent only 24–48 h after the onset of septic shock, as it is not clinically detectable below approximately 4 L [14]. Indeed, clinical appraisal of fluid overload is insufficient in septic shock and lacks sensitivity. Daily fluid balance monitoring is the simplest, most straightforward way to measure the extent of fluid overload. In a historic cohort of septic shock patients, Boyd reported a cumulative average fluid balance of +11 L by day 4, a more positive fluid balance being associated with an increased risk of mortality in these patients [42]. The most accurate measurement of the blood compartment volume and transcapillary filtration requires the injection of a bolus of albumin labeled with radioactive iodine, allowing the measurement of its transcapillary escape rate (TER). This technique was used to evaluate the benefit of albumin infusions during sepsis, which failed to decrease vascular permeability [43]. In a randomized trial using isotopic blood volume and TER analysis in critically ill patients (with a majority of septic shock), fluid management was changed by the analysis in 44% of cases, and the overall mortality was significantly decreased in the intervention arm [44]. This underpins the difficulty to assess the fluid status of critically ill patients. The discrepancy between intravascular and interstitial volume was elegantly explored with a “volume kinetics” method, using the haemodilution induced by an infusion of crystalloids [45]. This method was able to predict the repartition of fluids in the plasma and the interstitium in healthy volunteers and anesthetized patients, and also confirmed the “interstitial albumin washout” phenomenon predicted by Guyton [45].

## Interstitial pressure (and transcapillary flow) regulation during inflammation

### Interstitial pressure measurement

Arthur C. Guyton pioneered the exploration of the interstitium, and developed the reference technique for measuring interstitial pressure with the implantation of a perforated capsule in animal models [46]. The pressure could be measured after allowing several weeks for healing and stabilization. In the 1980s, many new approaches emerged to measure interstitial pressure. Various subcutaneous catheter techniques were then developed in animal models, with either fluid-filled side ported catheters or using the wick-in-needle technique [47]. Since then, most experimental studies [48, 49] have used glass micropipettes linked to an automated counterpressure system. Finally, miniaturization of pressure sensors has enabled the development of reliable and accurate catheters for measuring pressure, although their size remains significantly greater than that of micropipettes [50].

### Discovery of interstitial pressure regulation in models of burn injury

If a rise in  $P_{if}$  can prevent oedema formation, a decrease in  $P_{if}$  is sufficient to enhance transcapillary filtration and promote oedema formation. In healthy volunteers, the application of negative pressure on the lower limbs led to an almost instantaneous drop in interstitial pressure in the leg with increased fluid filtration and leg oedema [51]. During inflammation, the rapid formation of oedema is facilitated not only by changes in the endothelial barrier, but also a sudden drop in interstitial pressure [52]. Indeed, in the case of a burn, a visible oedema appears within a few minutes. The interstitial volume must at least double for an oedema to become visible [48]. The filtration rate must, therefore, increase several hundred times above the normal to generate oedema in such a short time, since the interstitial fluid usually turns over in 12 to 24 h. Studies measured  $K_f$  variations during experimental burn injury, which was increased by a factor of 2 to 3 [53, 54]. With this modest increase in  $K_f$ , it was calculated that the net filtration pressure would have to increase to 200 mmHg to explain the observed filtration rate [53]. To explore this hypothesis, Lund et al. measured interstitial pressure in an experimental model of thermal burn injury in rats. They observed that intradermal  $P_{if}$  was reduced from normal level of  $-1$  mmHg to highly negative values ( $-150$  mmHg) after thermal injury [52]. The hypothesis of an increase in net filtration pressure was thus confirmed, mainly driven by a reduction in  $P_{if}$  rather than an increase in  $P_c$ . This landmark study, whose results were subsequently confirmed by

other teams in similar models [55], was the first to demonstrate an active role (via “aspiration”) for the interstitial tissue.

### Extension to other local and systemic inflammation models

The phenomenon of “interstitial suction” has been reproduced in models of systemic inflammation, such as during anaphylactic reaction induced in rats by the administration of intravenous dextran [56], with a reduction of  $-10$  mmHg in  $P_{if}$  in subcutaneous interstitial tissue. Similarly, “septic” inflammation seems to bring on the same effects. In an experimental rat model, injection of LPS reduced interstitial pressure and contributed to oedema formation with extravasation of I-125-marked albumin [57]. A comparable reduction was previously observed in a model of endotoxic shock in dogs, with an immediate reduction in interstitial pressure of up to 9 mmHg [58].

Apart from inflammation, the power of this interstitial “suction” phenomenon is also illustrated in the salivary glands, where it is allowing the bursts of salivary secretion which require, in response to a vegetative stimulus, an increase in the transcapillary flow by a factor of ten [59]. This is a striking illustration on how this phenomenon, in a daily physiologic function, has the ability to recruit a large volume from the circulation, in a limited time.

Interestingly, it was found that adrenergic vasoconstriction and vasopressors also had a lowering effect on  $P_{if}$ . In their study, Border et al. explored the effect of different shock types and isolated vasopressors on interstitial fluid pressure measured with the Guyton technique. As mentioned earlier, endotoxic shock was characterized by a marked, although transient lowering of  $P_{if}$  (increasing  $V_i$  due to capillary filtration explains the return to pre-shock values). However, in hemorrhagic shock and with the isolated perfusion of catecholamines,  $P_{if}$  was also lowered, but in a constant and dose-dependent manner [58]. This was predicted, according to authors, by the Starling principles, as the vascular volume is decreased by vasopressors (thereby increasing relative  $V_i$ ). These results could also be explained by a decreased capillary flow due to extreme vasoconstriction [60].

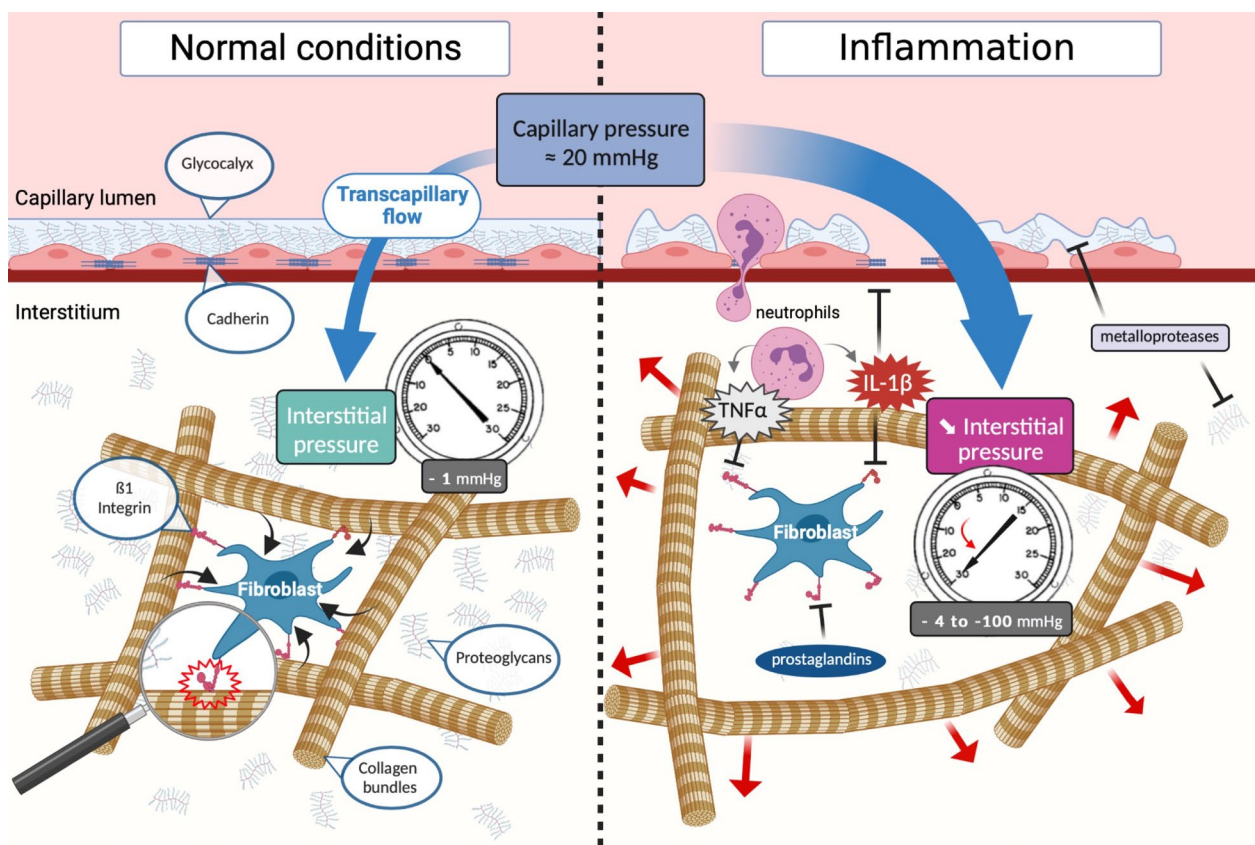
### Role of the extracellular matrix and fibroblasts

Oedema is, therefore, not accidental, but rather represents a finely tuned mechanism and necessary component of the local immune response (by facilitating the trafficking of humoral and cell mediators). Indeed, the phenomenon of “interstitial suction” contributes, as seen above, to inflammatory oedema. The regulation of interstitial pressure is primarily based on the interaction between fibroblasts and the ECM.

Fibroblasts interact with the ECM and play a role in regulating interstitial pressure within this molecular network. They express specific integrins that are capable of binding to collagen fibres, notably via their  $\beta 1$  subunit (e.g., integrin  $\alpha 2\beta 1$ ). Integrins are transmembrane proteins comprising 2 subunits that enable bidirectional adhesion, attaching the cell cytoskeleton to the ECM. The  $\beta 1$  integrin subunit, therefore, enables transmission of constant mechanical tension to the ECM via the interaction with collagens, opposing the natural tendency of GAGs to expand with hydration. Thus, a sudden depression can be caused by rapid release of the pressure exerted on the collagen fibres (Fig. 4) [10].

The role of  $\beta 1$  integrin subunit in the formation of oedema has been demonstrated in vitro by the assessment of fibroblast-mediated contraction of floating collagen type I gels [61]. In this study, it was shown that fibroblasts are capable of contracting collagen gels to

10% of the initial gel volume within a 24-h incubation period. These findings were confirmed by in vivo experiments in which blockade of  $\beta 1$ -integrin adhesion receptors in rat skin led to a decrease in interstitial pressure and formation of oedema [49, 62]. During inflammation, pro-inflammatory mediators such as IL-1 $\beta$  and TNF- $\alpha$  counteract this contraction via their activity on the  $\beta 1$  integrin subunit, causing a reduction in interstitial pressure, and subsequently, oedema [63]. The platelet-derived growth factor (PDGF) exerts an inverse effect on this cascade linked to the  $\beta 1$  integrin, leading to an increase in interstitial pressure via the contraction of fibroblasts and the mediation of another integrin subunit ( $\alpha V\beta 3$ ) [64]. In tumors, where interstitium is enlarged and interstitial pressure is increased, PDGF inhibitors reverse the tumor-induced increase in interstitial pressure, and improve antitumor response by promoting capillary filtration and local diffusion of antitumor agents [65].



**Fig. 4** Interaction between the microcirculation and interstitial extracellular matrix during homeostasis and sepsis. In steady state, transcapillary flow is regulated by a solid endothelial barrier and a compacted interstitium with stable, slightly negative pressure (left panel). Fibroblasts apply constant tension to the network of collagen bundles. Fibroblasts' cytoskeleton is tethered to collagen IV through transmembrane protein  $\beta 1$  integrin. When inflammation is present (right panel), the binding of collagen bundles by  $\beta 1$  integrin is inhibited by inflammatory mediators (especially IL-1 $\beta$ ), releasing the physical tension constraining the collagen network, which leads to an abrupt decrease in interstitial pressure [10]. Furthermore, like the glycocalyx, the extracellular matrix is altered by the various proteases released by innate immune cells. The massive increase of transcapillary flow is allowed by the resultant increase in filtration pressure (capillary pressure—interstitial pressure) and by a parallel increase in endothelial permeability due to intercellular adhesion inhibition and glycocalyx shedding



Furthermore, ECM's GAGs are also involved in interstitial volume regulation. They are negatively charged and interact in particular with sodium, the most abundant cation in the extracellular fluid. Depending on their spatial conformation, GAGs accumulate a varying quantity of sodium, which can contribute to variations in interstitial volume, oedema formation and resolution [66, 67]. During sepsis, sodium load is increased due to hyperaldosteronism, a phenomenon that is thus enhanced by the ECM's "hunger" for sodium, which could overall hinder oedema resolution and interfere with the complex interaction between interstitial sodium, macrophages osmosensors and VEGF-induced lymphangiogenesis [67].

### Extracellular matrix alteration

The ECM forms the physical structure of the interstitial space. We described the functional changes induced by inflammation, leading to ECM decompaction. Moreover, inflammation also leads to the direct alteration of ECM structural compounds due to the release by infiltrating neutrophils of potent catalytic enzymes, such as MMPs (matrix metalloproteases), heparanases and hyaluronidases [68], activated by IL-1 $\beta$  and TNF- $\alpha$  [69]. During sepsis as well, evidence was found of massive ECM degradation, giving rise to the concept of "systemic wound" [70]. In septic shock patients at the time of diagnosis, circulating levels of cross-linked type I collagen telopeptides (ICTP), a marker of collagen I degradation, were five times higher compared to controls [70]. In this study, markers of collagen synthesis were also increased, although it was only the case for the precursor of collagen III and not collagen I. Levels of ICTP and procollagen were also higher in non-survivors compared to survivors [70]. Increased levels of ICTP were also found in patients with Gram-negative sepsis [71], and increased procollagen III levels were found in other studies in septic patients [72, 73]. Procollagen III is also increased during ARDS, and might be an important contributor to the progression to fibrosis [74].

A small descriptive study from Koskela and collaborators [75], reported that the epidermal expression of both laminin-332 and type IV collagen was decreased early in severe sepsis, and for up to 3 months in survivors. Hoffmann and collaborators reported elevated levels of matrix metalloproteases and their inhibitors (MMP-9, TIMP-2 and TIMP-1) in severe sepsis, and TIMP-1 was suggested as a useful biomarker in predicting the clinical outcome of patients with severe sepsis [76]. The prognostic role of TIMP1 and MMP9 during sepsis was confirmed by another study [77].

Other ECM macromolecules, such as proteoglycans and small leucine-rich proteoglycans (SLRP), can be synthesized *de novo* or released from collagen association

during ECM remodelling. Recently, Maiti G and collaborators reported that during sepsis, lumican (a proteoglycan from the SLRP family) is endocytosed by immune cells and is able to control receptor ligand trafficking [78]. Lumican promoted TLR4 but restricted TLR9 during sepsis: it may thus play a dual protective role in barrier ECM tissues, by promoting bacterial defense and control antiviral and autoimmune inflammatory responses [78]. Circulating GAGs were also used to monitor inflammation-induced ECM alteration during disease, like in rheumatoid arthritis [79], and acute pancreatitis [80]. Elevated levels of circulating GAGs were also described during sepsis, mostly as a marker of the degradation of the endothelial glycocalyx, a thick layer of glycosaminoglycans covering the endoluminal side of the endothelium, comprising a network of glycosaminoglycans and proteoglycans anchored to the endothelial cell wall [81]. Animal models of endotoxemia demonstrate the sepsis-induced shedding of the glycocalyx, with an increased plasma concentration of its byproducts (e.g., syndecan-1 and heparin sulfate) [82], in response to the same enzymes as the ECM [15]. Median plasma levels of glycosaminoglycans (GAGs) resulting from vascular damage, were found to be increased almost fourfold in septic shock patients, and correlate with shock severity and mortality rate [83, 84]. The major role of glycocalyx in sepsis pathophysiology is now well-known. However, glycocalyx is considered to be a cellular counterpart, an extension or even a specialized form of ECM [85]. Indeed, their structure and composition are very similar, although glycocalyx does not include collagen fibers but hyaluronan and transmembrane proteoglycans, such as syndecan. Glycocalyx is in fact an external organelle for every cell, serving as a physical interface with the ECM (or blood in the case of the thicker endothelial glycocalyx) [86].

The consequences of ECM alteration during sepsis are not known yet. It could participate in the increased capillary filtration, as ECM physical structure is a key to the regulation of interstitial pressure: collagen and proteoglycans alteration could enhance the "decompaction" of the ECM. This is supported by experimental data: enzymatic digestion potentiates the *ex vivo* swelling of loose connective tissue immersed in isotonic saline, which is normally restrained by the collagen fibers network [87]. Furthermore, the collagen-protecting role of vitamin C was proposed as a potential mechanism to explain its oedema preventing effect in a model of burn injury [88]. Moreover, the alteration of the ECM may be especially relevant in the process of oedema resorption, i.e., the de-escalation phase of the septic shock fluid management. First, the altered ECM may have lost its ability to increase interstitial pressure and initiate a pressure gradient for lymphatic drainage, as compared with an intact ECM.

Second, the decrease of the collagen in the interstitium increases the interstitial protein content, due to the phenomenon of steric exclusion by the collagen fibres, described by Wiig et al. [89]. Indeed, with a normal ECM, the apparent distribution volume of albumin and other macromolecules is lower than the total interstitial volume, because the multiple spaces delimited by the collagen network are not fully available to these molecules. An increased interstitial protein mass can increase colloid osmotic pressure and directly impair fluid transfers, as a higher lymph flow (“washout”) will be required to restore interstitial fluid volume [2]. Although clinical data are lacking yet, healing of the ECM may be a prerequisite for achieving negative fluid balance in septic shock patients.

#### **Extracellular matrix repair and adaptation**

Increased interstitial flow has biophysical effects on ECM and residing cells. Mechanical stress, as well as inflammation, can induce the differentiation of fibroblast into myofibroblasts, and may ultimately lead to fibrogenesis [90]. It was found that increased interstitial flow could induce fibroblast motility through MMP-1 upregulation [91] as well as drive myofibroblast differentiation and matrix alignment, in a TGF- $\beta$ -dependent mechanism [92]. The alignment of the ECM was observed 12–24 h after flow onset, whereas myofibroblast differentiation occurred after 1–5 days. Interestingly, ECM’s fibers reorganize perpendicularly to the flow, decreasing the matrix’s conductivity. Another interesting effect of this realignment is a change in the shear stress repartition, transferred away from the cells and onto the matrix fibers [93]. Matrix alignment and fibroblast contraction also increase the ECM stiffness. Overall, these *in vitro* findings suggest that persistent increased interstitial flow can rapidly lead to ECM stiffening, alignment and myofibroblast differentiation, which are hallmarks of interstitial fibrosis.

It is yet unknown if interstitial fibrosis can develop in critically ill patients with persistent inflammation, but it might then contribute to inadequate healing with a persistent state of fluid overload, as seen in the more severe patients.

#### **Interstitialium-derived inflammation (local production of mediators)**

##### **Interstitial fluid assessment: collection and analysis of interstitial fluid**

In the view of the emerging role of the interstitium, it appears that interstitial fluid is a promising medium for the discovery of new biomarkers. However, access to this fluid is difficult. In the 1900s, metal tubes were introduced subcutaneously for the evacuation of oedema in patients with heart failure (“Southey’s tubes”) [94].

This invasive technique was abandoned, but we can still observe in ICU that subcutaneous interstitial fluid is easily flowing through any cutaneous effraction in patients with overt oedema. The technique of pre-nodal lymphatic cannulation is probably the best way to obtain “pure” interstitial fluid [95], but it is invasive and requires microsurgery skills. Microdialysis was developed to determine the biochemical composition of interstitial tissue [96]. It is now mainly used for the monitoring of critically ill patients with brain injury to identify ischemia-associated metabolic changes [97]. Due to the semi-permeable membrane, it is limited to the analysis of ions and small metabolites. The microperfusion technique does not involve an exchange membrane and, therefore, enables analysis of a wider range of molecules, such as cytokines. It is widely used in pharmacologic studies, especially for topical drugs [98].

##### **Interstitial exploration during sepsis and other inflammatory diseases**

The interstitial compartment is much more difficult to access than the blood for the analysis of biomarkers. However, numerous markers of inflammation are of local origin. Olszewski et al. performed lower leg lymphatic cannulation in patients with rheumatoid arthritis and in control subjects and collected prenodal lymph continuously for 72 h [99]. A lymph/serum ratio greater than 1, indicating local production, was found for most of the pro-inflammatory cytokines measured (IL-1  $\beta$ , TNF- $\alpha$ , IL-6, IL-8). Those cytokines are also primarily involved in sepsis pathophysiology and produced for the most part by macrophages [100]. Furthermore, the interindividual variations in cytokine concentration, or the variations induced by treatment with methylprednisolone, were clearly visible at the lymphatic level, whereas the serum concentration did not vary significantly [99].

Using a microperfusion catheter inserted into the abdominal cutaneous adipose tissue of nine patients with severe sepsis, Ikeoka et al. found that the concentrations of IL-1 $\beta$ , IL-6 and IL-8 were higher in subcutaneous adipose tissue than in serum, indicating a subcutaneous interstitial production of these pro-inflammatory mediators, remotely from the infection site [101]. In addition, blood pressure was negatively correlated with subcutaneous concentrations of IL-1 $\beta$ , IL-6 and IL-8. Subcutaneous interstitial production of IL-1 has previously been demonstrated in a rat model of endotoxaemia using skin centrifugation [102], suggesting that the subcutaneous interstitium is involved during a systemic inflammatory stimulus. Immunohistochemical studies showed that the cells at the origin of this production of cytokines were primarily interstitial fibroblasts, but also epidermal cells and hair follicles [102]. The same authors have shown a

direct mechanistic role of IL-1 $\beta$  and TNF- $\alpha$  concentrations in the formation of inflammatory oedema, and reported an immediate drop in interstitial pressure after exposure of subcutaneous tissue to similar cytokine concentrations as those found in endotoxaemia [63] or in models of ischemia–reperfusion [103]. Remote interstitial production of cytokines was also demonstrated in the subcutaneous adipose tissue of patients undergoing cardiac surgery, with increased IL-6 in the interstitial fluid, originating from the adipocytes with nuclear factor- $\kappa$ B-regulated genes activation [104]. The interstitial production of cytokines may also find its origin in a contingent of CD34+ (a pan-myeloid marker, also present at the surface of certain mesenchymal cells) interstitial fibroblasts observed in the microscopic study of sub epithelial interstitium by Benias et al. [1]. Indeed, CD34 fibroblasts secrete large amounts of IL-6, CXCL12, and CCL2 when stimulated with tumor necrosis factor (TNF) in vitro, suggesting their role in the recruitment of monocytes during inflammation [105].

### Alteration of lymphatic outflow

The lymphatic system plays a critical role in the circulation. At steady state, pre-nodal lymph flow equals capillary filtration, with an estimated 8–12 L reabsorbed daily through the lymphatic system [106], beginning in the interstitium as blind-ended sacs. The junctions between endothelial cells function as one-way valves for interstitial fluid, and drain into the precollecting lymphatics. Subatmospheric pressures are maintained by the rhythmic contraction of smooth muscle cells enclosed in the walls of lymphatic vessels, along with unidirectional valves [107]. Like blood vessels, lymphatic vessels respond to inflammatory mediators. Thus, lymphatic contractility is down-regulated by classic vasodilator mediators, such as NO, prostaglandins [108], histamine [109], and also with proinflammatory cytokines [110]. Lymphatic drainage is yet very important for the trafficking of antigens and dendritic cells to the lymph nodes. This explains the intense, CD11+ macrophages-induced lymphangiogenesis observed during local inflammation, which compensates the decrease in lymphatic contractility and allows an increase in regional lymph flow [111]. On the contrary, during acute conditions with systemic inflammation, such as sepsis, lymphangiogenesis may not be sufficient to overcome the global effect of inflammation-induced lymphatic relaxation. Thereby, inflammation-induced decrease in lymphatic drainage may be a major contributor to the deregulation of fluid balance during sepsis, and was considered by some authors as a therapeutic target [112].

Moreover, lymphatic alterations are also critical in the development of organ damage, and may prevent healing

mechanisms. In the lungs, the role of lymphatic circulation is evidenced in lung transplantation, during which lymphatic vessels are interrupted. Lung transplant recipients exhibit persistent oedema, and the role of lymphatic vessels and lymphangiogenesis is suspected in primary graft dysfunction [113]. Resorption of pulmonary oedema plays a critical role for the outcome of ARDS. Fluid from the alveolar lumen is transported to the interstitium via transmembrane pumps. In LPS-induced acute lung damage, improved fluid clearance and survival was linked to increased lymphangiogenesis markers [114]. The role of lymphatics in acute organ failure was also evidenced in a murine model of acute kidney injury (AKI), where expansion of lymphatics improved recovery, suggesting an important role of lymphangiogenesis to prevent the progression of AKI to chronic kidney disease [115]. Although clinical data are lacking in human sepsis, the role of lymphatic drainage is obviously very important especially in the resolution phase of sepsis, both for organ dysfunction and general fluid overload resorption.

### Conclusions

The interstitium is not merely a passive bystander but finally emerges as a key player in the regulation of transcapillary flow, in particular with its ability to aspirate fluid from the blood vessels. This important role in the regulation of capillary filtration is increasingly well-documented in the setting of local inflammation and in tumours, but evidence of interstitium involvement during sepsis is still scarce. A lot of questions remain open as to its exact role during sepsis: what is the magnitude of pressure changes? Are there organ-specific responses? What is the respective role of subcutaneous fibroblasts and adipocytes in cytokine secretion? What is the role of ECM damage on oedema formation and resolution? In the current era of personalized medicine, the study of this little-known compartment could yield valuable insights, enhance our understanding of the pathophysiology and open unique perspectives for the investigation of new biomarkers and therapies.

### Abbreviations

ARDS	Acute respiratory distress syndrome
COP	Colloid osmotic pressure
$\Delta P_f$	Net filtration pressure
ECM	Extracellular matrix
GAG	Glycosaminoglycan
ICTP	Cross-linked type I collagen telopeptides
$J_v$	Trans-endothelial filtration volume per second
$K_f$	Coefficient of filtration
MMP	Matrix metalloprotease
$P_c$	Capillary hydrostatic pressure
$P_i$	Interstitial hydrostatic pressure
$\pi_c$	Capillary colloid osmotic pressure
$\pi_g$	Sub-glycocalyx colloid osmotic pressure
$\pi_i$	Interstitial colloid osmotic pressure

PDGF	Platelet-derived growth factor
SLRP	Small leucine-rich proteoglycans
$\sigma$	Reflection coefficient for plasma proteins
TER	Transcapillary escape rate

### Acknowledgements

We would like to extend our special thanks to Professor Helge Wiig for his outstanding contribution to the discoveries discussed in this review, and for his kind permission to adapt his extracellular matrix diagram. We also thank Jill Gregory (Mt. Sinai Health System) for giving her permission to use her illustration, and Fiona Ecartot (EA3920, University Hospital Besançon, France) for translation and editorial assistance.

### Author contributions

AD and MJ drafted the initial manuscript and gathered bibliography. SB and SBP drafted and reviewed the extracellular matrix section. HD, ML, MB, PEC, IF and JPQ reviewed and corrected the manuscript. All authors read and approved the final manuscript.

### Funding

This work did not receive any funding.

### Availability of data and materials

Not applicable.

### Declarations

#### Ethics approval and consent to participate

Not applicable

#### Consent for publication

Not applicable

#### Competing interests

The authors declare that they have no competing interests.

Received: 26 June 2023 Accepted: 29 September 2023

Published online: 10 October 2023

### References

- Benias PC, Wells RG, Sackey-Aboagye B, Klavan H, Reidy J, Buonocore D, et al. Structure and distribution of an unrecognized interstitium in human tissues. *Sci Rep*. 2018;8:395.
- Aukland K, Reed RK. Interstitial-lymphatic mechanisms in the control of extracellular fluid volume. *Physiol Rev*. 1993;73:1–78.
- Angus DC, van der Poll T. Severe sepsis and septic shock. *New Engl J Med*. 2013;369(840):851.
- Marx G, Meyer MC, Schuerholz T, Vangerow B, Gratz K, Hecker H, et al. Hydroxyethyl starch and modified fluid gelatin maintain plasma volume in a porcine model of septic shock with capillary leakage. *Intens Care Med*. 2002;28(629):635.
- Cordemans C, Laet ID, Regenmortel NV, Schoonheydt K, Dits H, Huber W, et al. Fluid management in critically ill patients: the role of extravascular lung water, abdominal hypertension, capillary leak, and fluid balance. *Ann Intensive Care*. 2012;2(Suppl 1):S1.
- Tigabu BM, Davari M, Kebriaeezadeh A, Mojtahedzadeh M. Fluid volume, fluid balance and patient outcome in severe sepsis and septic shock: a systematic review. *J Crit Care*. 2018;48:153–9.
- Besen BAMP, Taniguchi LU. Negative fluid balance in sepsis: when and how? *Shock*. 2017;47:35–40.
- Reed RK, Rubin K. Transcapillary exchange: role and importance of the interstitial fluid pressure and the extracellular matrix. *Cardiovasc Res*. 2010;87:211–7.
- Cenaj O, Allison DHR, Imam R, Zeck B, Drohan LM, Chiriboga L, et al. Evidence for continuity of interstitial spaces across tissue and organ boundaries in humans. *Commun Biol*. 2021;4:436.
- Wiig H, Rubin K, Reed RK. New and active role of the interstitium in control of interstitial fluid pressure: potential therapeutic consequences. *Acta Anaesth Scand*. 2003;47(111):121.
- Ushiki T. Collagen fibers, reticular fibers and elastic fibers: a comprehensive understanding from a morphological viewpoint. *Arch Histol Cytol*. 2002;65:109–26.
- Joffe J, Hellman J, Ince C, Ait-Oufella H. Endothelial responses in sepsis. *Am J Resp Crit Care*. 2020;202:361–70.
- London NR, Zhu W, Bozza FA, Smith MCP, Greif DM, Sorensen LK, et al. Targeting Robo4-dependent slit signaling to survive the cytokine storm in sepsis and influenza. *Sci Transl Med*. 2010;2:23ra19.
- Lee WL, Slutsky AS. Sepsis and endothelial permeability. *New Engl J Med*. 2010;363:689–91.
- Goligorsky MS, Sun D. Glycocalyx in endotoxemia and sepsis. *Am J Pathol*. 2020;190:791–8.
- Abe K, Tanaka J, Mishima K, Iijima T. Exploring the mechanism of hyperpermeability following glycocalyx degradation: beyond the glycocalyx as a structural barrier. *PLoS ONE*. 2021;16:e0252416.
- Starling EH. On the absorption of fluids from the connective tissue spaces. *J Physiol*. 1896;19:312–26.
- Kurbel S, Kurbel B, Belovari T, Maric S, Steiner R, Bozic D. Model of interstitial pressure as a result of cyclical changes in the capillary wall fluid transport. *Med Hypotheses*. 2001;57:161–6.
- Guyton AC, Taylor AE, Brace RA. A synthesis of interstitial fluid regulation and lymph formation. *Fed Proc*. 1976;35:1881–5.
- Starling EH. Physiological factors involved in the causation of dropsy. *Lancet*. 1896;147(1267):1270.
- Levick JR, Michel CC. Microvascular fluid exchange and the revised Starling principle. *Cardiovasc Res*. 2010;87(198):210.
- Curry FE, Michel CC. A fiber matrix model of capillary permeability. *Microvasc Res*. 1980;20:96–9.
- Bates DO, Levick JR, Mortimer PS. Starling pressures in the human arm and their alteration in postmastectomy oedema. *J Physiology*. 1994;477:355–63.
- Levick JR. Capillary filtration-absorption balance reconsidered in light of dynamic extravascular factors. *Exp Physiol*. 1991;76(825):857.
- Guyton AC. Interstitial fluid pressure: pressure-volume curves of interstitial space. *Circ Res*. 1965;16(452):460.
- Wiig H, Lund T. Relationship between interstitial fluid volume and pressure (compliance) in hypothyroid rats. *Am J Physiol-Hear Circ Physiol*. 2001;281:H1085–92.
- Evans L, Rhodes A, Alhazzani W, Antonelli M, Coopersmith CM, French C, et al. Surviving sepsis campaign: international guidelines for management of sepsis and septic shock 2021. *Crit Care Med*. 2021;49:e1063–143.
- Stranden E, Myhre HO. Pressure–volume recordings of human subcutaneous tissue: a study in patients with edema following arterial reconstruction for lower limb atherosclerosis. *Microvasc Res*. 1982;24(241):248.
- Kolb L, Rimmelink M, Salmon I, Vincent J-L. Organ edema in patients with severe sepsis. *Crit Care Med*. 2012;40(1):328.
- Kelm DJ, Perrin JT, Cartin-Ceba R, Gajic O, Schenck L, Kennedy CC. Fluid overload in patients with severe sepsis and septic shock treated with early goal-directed therapy is associated with increased acute need for fluid-related medical interventions and hospital death. *Shock*. 2015;43:68–73.
- Alsous F, Khamees M, DeGirolamo A, Amoateng-Adjepong Y, Manthous CA. Negative fluid balance predicts survival in patients with septic shock: a retrospective pilot study. *Chest*. 2000;117(1749):1754.
- Dhondup T, Tien J-CC, Marquez A, Kennedy CC, Gajic O, Kashani KB. Association of negative fluid balance during the de-escalation phase of sepsis management with mortality: a cohort study. *J Crit Care*. 2020;55:16–21.
- Silver IA. Local factors in tissue oxygenation. *J Clin Pathol*. 1977;30:117.
- Pias SC. Oxygen transport to tissue XLI. *Adv Exp Med Biol*. 2020;1232:183–90.
- Mallat J, Rahman N, Hamed F, Hernandez G, Fischer M-O. Pathophysiology, mechanisms, and managements of tissue hypoxia. *Anaesth Crit Care Pa*. 2022;41:101087.
- Roch A, Guervilly C, Papazian L. Fluid management in acute lung injury and ards. *Ann Intensive Care*. 2011;1:16.

37. Liu J, Abdel-Razek O, Liu Z, Hu F, Zhou Q, Cooney RN, et al. Role of surfactant proteins A and D in sepsis-induced acute kidney injury. *Shock*. 2015;43:31–8.
38. Malbrain MLNG, Marik PE, Witters I, Cordemans C, Kirkpatrick AW, Roberts DJ, et al. Fluid overload, de-resuscitation, and outcomes in critically ill or injured patients: a systematic review with suggestions for clinical practice. *Anaesthesiol Intensive Ther*. 2014;46:361–80.
39. Meyhoff TS, Møller MH, Hjortrup PB, Cronhjort M, Perner A, Wetterslev J. Lower vs higher fluid volumes during initial management of sepsis: a systematic review with meta-analysis and trial sequential analysis. *Chest*. 2020;157:1478–96.
40. Meyhoff TS, Hjortrup PB, Wetterslev J, Sivapalan P, Laake JH, Cronhjort M, et al. Restriction of intravenous fluid in ICU patients with septic shock. *New Engl J Med*. 2022;386:2459–70.
41. National Heart, Lung, and Blood Institute Prevention and Early Treatment of Acute Lung Injury Clinical Trials Network, Shapiro NI, Douglas IS, Brower RG, Brown SM, Exline MC, et al. Early restrictive or liberal fluid management for sepsis-induced hypotension. *New Engl J Med*. 2023;388:499–510.
42. Boyd JH, Forbes J, Nakada T, Walley KR, Russell JA. Fluid resuscitation in septic shock: a positive fluid balance and elevated central venous pressure are associated with increased mortality\*. *Crit Care Med*. 2011;39(259):265.
43. Margaron MP, Soni NC. Effects of albumin supplementation on microvascular permeability in septic patients. *J Appl Physiol*. 2002;92(2139):2145.
44. Yu M, Pei K, Moran S, Edwards KD, Domingo S, Steinemann S, et al. A prospective randomized trial using blood volume analysis in addition to pulmonary artery catheter, compared with pulmonary artery catheter alone, to guide shock resuscitation in critically ill surgical patients. *Shock*. 2011;35:220–8.
45. Hahn RG, Dull RO. Interstitial washdown and vascular albumin refill during fluid infusion: novel kinetic analysis from three clinical trials. *Intensive Care Med Exp*. 2021;9:44.
46. Guyton AC, Granger HJ, Taylor AE. Interstitial fluid pressure. *Physiol Rev*. 1971;51:527–63.
47. Wiig H, Reed RK, Aukland K. Measurement of interstitial fluid pressure: comparison of methods. *Ann Biomed Eng*. 1986;14:139–51.
48. Aukland K, Reviews GNP. Interstitial fluid volume: local regulatory mechanisms. *Am Physiol Soc*. 1981. <https://doi.org/10.1152/physrev.1981.61.3.556>.
49. Reed RK, Rubin K, Wiig H, Rodt SA. Blockade of beta 1-integrins in skin causes edema through lowering of interstitial fluid pressure. *Circ Res*. 1992;71(978):983.
50. Ozerdem ARHU. A simple method for measuring interstitial fluid pressure in cancer tissues. *Microvasc Res*. 2005;70(116):120.
51. Aratow M, Fortney SM, Watenpaugh DE, Crenshaw AG, Hargens AR. Transcapillary fluid responses to lower body negative pressure. *J Appl Physiol*. 1993;74:2763–70.
52. Lund T, Wiig H, Reed RK. Acute postburn edema: role of strongly negative interstitial fluid pressure. *Am J Physiol-heart C*. 1988;255:H1069–74.
53. Arturson G, Mellander S. Acute changes in capillary filtration and diffusion in experimental burn injury. *Acta Physiol Scand*. 1964;62(457):463.
54. Dyess DL, Ardell JL, Townsley MI, Taylor AE, Ferrara JJ. Effects of hypertonic saline and dextran 70 resuscitation on microvascular permeability after burn. *Am J Physiol-Heart C*. 1992;262:H1832–7.
55. Kinsky MP, Guha SC, Button BM, Kramer GC. The role of interstitial starling forces in the pathogenesis of burn edema. *J Burn Care Rehabil*. 1998;19:1–9.
56. Reed RK, Rodt SA. Increased negativity of interstitial fluid pressure during the onset stage of inflammatory edema in rat skin. *Am J Physiol-Heart C*. 1991;260(H1985):91.
57. Nedrebø T, Reed RK. Different serotypes of endotoxin (Lipopolysaccharide) cause different increases in albumin extravasation in rats. *Shock*. 2002;18:138–41.
58. Border JR, Heyden WC, Jacobs RR, Hopkinson BR, Schenk WG. The microcirculatory effects of endotoxin shock as evaluated by effects on interstitial fluid pressure. *Arch Surg*. 1970;101(284):289.
59. Berggreen E, Wiig H. Lowering of interstitial fluid pressure in rat submandibular gland: a novel mechanism in saliva secretion. *Am J Physiol-Heart C*. 2006;290:H1460–8.
60. Tveit E, Hultborn R, Weiss L. Effects of noradrenaline on interstitial fluid pressure in induced rat mammary tumours. *Cancer Lett*. 1985;27:249–53.
61. Gullberg D, Tingström A, Thureson A-C, Olsson L, Terracio L, Borg TK, et al.  $\beta 1$  Integrin-mediated collagen gel contraction is stimulated by PDGF. *Exp Cell Res*. 1990;186(264):272.
62. Svendsen ØS, Barczyk MM, Popova SN, Lidén A, Gullberg D, Wiig H. The  $\alpha 1 \beta 1$  integrin has a mechanistic role in control of interstitial fluid pressure and edema formation in inflammation. *Arter Thromb Vasc Biol*. 2009;29:1864–70.
63. Nedrebø T, Berg A, Reed RK. Effect of tumor necrosis factor- $\alpha$ , IL-1 $\beta$ , and IL-6 on interstitial fluid pressure in rat skin. *Am J Physiol-Heart C*. 1999;277:H1857–62.
64. Lidén Å, Berg A, Nedrebø T, Reed RK, Rubin K. Platelet-derived growth factor BB-mediated normalization of dermal interstitial fluid pressure after mast cell degranulation depends on  $\beta 3$  but not  $\beta 1$  Integrins. *Circ Res*. 2006;98:635–41.
65. Wagner M, Wiig H. Tumor interstitial fluid formation, characterization, and clinical implications. *Front Oncol*. 2015;5:115.
66. Nijst P, Verbrugge FH, Grieten L, Dupont M, Steels P, Tang WHW, et al. The pathophysiological role of interstitial sodium in heart failure. *J Am Coll Cardiol*. 2015;65:378–88.
67. Wiig H, Luft FC, Titze JM. The interstitium conducts extrarenal storage of sodium and represents a third compartment essential for extracellular volume and blood pressure homeostasis. *Acta Physiol Oxf Engl*. 2017;222:e13006.
68. Zhu Y, Huang Y, Ji Q, Fu S, Gu J, Tai N, et al. Interplay between extracellular matrix and neutrophils in diseases. *J Immunol Res*. 2021;2021:8243378.
69. Uchimido R, Schmidt EP, Shapiro NI. The glycocalyx: a novel diagnostic and therapeutic target in sepsis. *Crit Care*. 2019;23:16.
70. Gäddnäs F, Koskela M, Koivukangas V, Risteli J, Oikarinen A, Laurila J, et al. Markers of collagen synthesis and degradation are increased in serum in severe sepsis: a longitudinal study of 44 patients. *Crit Care*. 2009;13:R53.
71. Wenisch C, Graninger W, Schönthal E, Rumpold H. Increased serum concentrations of the carboxy-terminal cross-linked telopeptide of collagen type I in patients with Gram-negative septicaemia. *Eur J Clin Invest*. 1996;26:237–9.
72. Zakyntinos S, Papanikolaou S, Mentzelopoulos S, Konstandelou E, Psachoulia C, Mavrommatis A. Procollagen type III aminoterminal propeptide as biomarker of host response in severe sepsis. *J Crit Care*. 2013;28:577–85.
73. Saleh NY, Aboelghar HM, Salem SS, Soliman SE, Elian DM. Relation of procollagen type III amino terminal propeptide level to sepsis severity in pediatrics. *Children*. 2021;8:791.
74. Tsukui T, Sun K-H, Wetter JB, Wilson-Kanamori JR, Hazelwood LA, Henderson NC, et al. Collagen-producing lung cell atlas identifies multiple subsets with distinct localization and relevance to fibrosis. *Nat Commun*. 2020;11:1920.
75. Koskela M, Gäddnäs F, Koivukangas V, Oikarinen A, Laurila J, Kallioinen M, et al. Dermal expression of laminin-332 and type IV collagen in humans with severe sepsis. *Acta Anaesth Scand*. 2015;59:1009–14.
76. Hoffmann U, Hoffmann U, Bertsch T, Hoffmann U, Bertsch T, Dvorsak E, et al. Matrix-metalloproteinases and their inhibitors are elevated in severe sepsis: prognostic value of TIMP-1 in severe sepsis. *Scand J Infect Dis*. 2006;38:867–72.
77. Niño ME, Serrano SE, Niño DC, McCosham DM, Cardenas ME, Villareal VP, et al. TIMP1 and MMP9 are predictors of mortality in septic patients in the emergency department and intensive care unit unlike MMP9/TIMP1 ratio: multivariate model. *PLoS ONE*. 2017;12:e0171191.
78. Maiti G, Frikeche J, Lam CY-M, Biswas A, Shinde V, Samanovic M, et al. Matrix lumican endocytosed by immune cells controls receptor ligand trafficking to promote TLR4 and restrict TLR9 in sepsis. *Proc National Acad Sci*. 2021;118:e2100999118.
79. Szeremeta A, Jura-Póltorak A, Koźma EM, Glowacki A, Kucharz EJ, Kopeć-Mędrak M, et al. Effects of a 15-month anti-TNF- $\alpha$  treatment on plasma levels of glycosaminoglycans in women with rheumatoid arthritis. *Arthritis Res Ther*. 2018;20:211.

80. Löhr M, Hummel F, Martus P, Cidlinsky K, Kröger JC, Hahn EG, et al. Serum levels of extracellular matrix in acute pancreatitis. *Hepato-gastroenterol.* 1999;46:3263–70.
81. Pillinger NL, Kam PCA. Endothelial glycocalyx: basic science and clinical implications. *Anaesth Intens Care.* 2017;45:295–307.
82. Michael H, Marco G, Weigand MA. Sepsis-induced degradation of endothelial glycocalyx. *Sci World J.* 2010;10:917–23.
83. Nelson A, Berkestedt I, Bodelsson M. Circulating glycosaminoglycan species in septic shock: glycosaminoglycans during septic shock. *Acta Anaesth Scand.* 2013;58:36–43.
84. Anand D, Ray S, Srivastava LM, Bhargava S. Evolution of serum hyaluronan and syndecan levels in prognosis of sepsis patients. *Clin Biochem.* 2016;49:768–76.
85. Moore KH, Murphy HA, George EM. The glycocalyx: a central regulator of vascular function. *Am J Physiol Regul Integr Comp Physiol.* 2021;320:R508–18.
86. Möckl L. The emerging role of the mammalian glycocalyx in functional membrane organization and immune system regulation. *Front Cell Dev Biol.* 2020;8:253.
87. Meyer FA, Laver-Rudich Z, Tanenbaum R. Evidence for a mechanical coupling of glycoprotein microfibrils with collagen fibrils in Wharton's jelly. *Biochim Biophys Acta BBA Gen Subj.* 1983;755:376–87.
88. Tanaka H, Lund T, Wiig H, Reed RK, Yukioka T, Matsuda H, et al. High dose vitamin C counteracts the negative interstitial fluid hydrostatic pressure and early edema generation in thermally injured rats. *Burns.* 1999;25:569–74.
89. Wiig H, Gyenge C, Iversen PO, Gullberg D, Tenstad O. The role of the extracellular matrix in tissue distribution of macromolecules in normal and pathological tissues: potential therapeutic consequences. *Microcirculation.* 2008;15:283–96.
90. Ahamed J, Burg N, Yoshinaga K, Janczak CA, Rifkin DB, Collier BS. In vitro and in vivo evidence for shear-induced activation of latent transforming growth factor- $\beta$ 1. *Blood.* 2008;112:3650–60.
91. Ng CP, Hinz B, Swartz MA. Interstitial fluid flow induces myofibroblast differentiation and collagen alignment in vitro. *J Cell Sci.* 2005;118:4731–9.
92. Shi Z-D, Wang H, Tarbell JM. Heparan sulfate proteoglycans mediate interstitial flow mechanotransduction regulating MMP-13 expression and cell motility via FAK-ERK in 3D collagen. *PLoS ONE.* 2011;6:e15956.
93. Pedersen JA, Lichter S, Swartz MA. Cells in 3D matrices under interstitial flow: effects of extracellular matrix alignment on cell shear stress and drag forces. *J Biomech.* 2010;43:900–5.
94. Leech CB. An improvement of Southey's tubes. *J Amer Med Assoc.* 1936;106:1895.
95. Olszewski WL. Collection and physiological measurements of peripheral lymph and interstitial fluid in man. *Lymphology.* 1977;10:137–45.
96. Ungerstedt U. Microdialysis—principles and applications for studies in animals and man. *J Intern Med.* 1991;230:365–73.
97. Ungerstedt U, Rostami E. Microdialysis in neurointensive care. *Curr Pharm Design.* 2004;10:2145–52.
98. Bodenlenz M, Tiffner KI, Raml R, Augustin T, Dragatin C, Birngruber T, et al. Open flow microperfusion as a dermal pharmacokinetic approach to evaluate topical bioequivalence. *Clin Pharmacokinet.* 2016;56:91–8.
99. Olszewski WL, Pazdur J, Kubasiewicz E, Zaleska M, Cooke CJ, Miller NE. Lymph draining from foot joints in rheumatoid arthritis provides insight into local cytokine and chemokine production and transport to lymph nodes. *Arthritis Rheum.* 2001;44:541–9.
100. Faix JD. Biomarkers of sepsis. *Crit Rev Cl Lab Sci.* 2013;50:23–36.
101. Ikeoka D, Pachler C, Korsatko S, Mader JK, Weinhandl H, Bodenlenz M, et al. Interleukin-6 produced in subcutaneous adipose tissue is linked to blood pressure control in septic patients. *Cytokine.* 2010;50:284–91.
102. Nedrebø T, Reed RK, Jonsson R, Berg A, Wiig H. Differential cytokine response in interstitial fluid in skin and serum during experimental inflammation in rats. *J Physiology.* 2004;556:193–202.
103. Nedrebø T, Reed RK, Berg A. Effect of alpha-trinositol on interstitial fluid pressure, edema generation, and albumin extravasation after ischemia-reperfusion injury in rat hind limb. *Shock.* 2003;20:149–53.
104. Ekström M, Halle M, Bjessmo S, Liska J, Kolak M, Fisher R, et al. Systemic inflammation activates the nuclear factor- $\kappa$ B regulatory pathway in adipose tissue. *Am J Physiol-endoc M.* 2010;299:E234–40.
105. Mizoguchi F, Slowikowski K, Wei K, Marshall JL, Rao DA, Chang SK, et al. Functionally distinct disease-associated fibroblast subsets in rheumatoid arthritis. *Nat Commun.* 2018;9:789.
106. Wiig H, Swartz MA. Interstitial fluid and lymph formation and transport: physiological regulation and roles in inflammation and cancer. *Physiol Rev.* 2012;92:1005–60.
107. Scallan JP, Zawieja SD, Castorena-Gonzalez JA, Davis MJ. Lymphatic pumping: mechanics, mechanisms and malfunction: lymphatic pumping mechanisms. *J Physiol.* 2016;594:5749–68.
108. Mizuno R, Koller A, Kaley G. Regulation of the vasomotor activity of lymph microvessels by nitric oxide and prostaglandins. *Am J Physiol Regul Integr Comp Physiol.* 1998;274:R790–6.
109. Nizamutdinova IT, Maejima D, Nagai T, Bridenbaugh E, Thangaswamy S, Chatterjee V, et al. Involvement of histamine in endothelium-dependent relaxation of mesenteric lymphatic vessels. *Microcirculation.* 2014;21:640–8.
110. Chen Y, Rehal S, Roizes S, Zhu H, Cole WC, von der Weid P. The pro-inflammatory cytokine TNF- $\alpha$  inhibits lymphatic pumping via activation of the NF- $\kappa$ B-iNOS signaling pathway. *Microcirculation.* 2017;24:e12364.
111. Kataru RP, Jung K, Jang C, Yang H, Schwendener RA, Baik JE, et al. Critical role of CD11b+ macrophages and VEGF in inflammatory lymphangiogenesis, antigen clearance, and inflammation resolution. *Blood.* 2009;113:5650–9.
112. Wu C, Li H, Zhang P, Tian C, Luo J, Zhang W, et al. Lymphatic flow: a potential target in sepsis-associated acute lung injury. *J Inflamm Res.* 2020;13:961–8.
113. Cui Y, Liu K, Lamattina AM, Visner G, El-Chemaly S. Lymphatic vessels: the next frontier in lung transplant. *Ann Am Thorac Soc.* 2017;14:S226–32.
114. Zhang P, Han J, Cao F, Liu Y, Tian C, Wu C, et al. PCTRI improves pulmonary edema fluid clearance through activating the sodium channel and lymphatic drainage in lipopolysaccharide-induced ARDS. *J Cell Physiol.* 2020;235:9510–23.
115. Baranwal G, Creed HA, Black LM, Auger A, Quach AM, Vegiraju R, et al. Expanded renal lymphatics improve recovery following kidney injury. *Physiol Rep.* 2021;9:e15094.
116. Stewart RH. A modern view of the interstitial space in health and disease. *Front Vet Sci.* 2020;7:609583.

## Publisher's Note

Springer Nature remains neutral with regard to jurisdictional claims in published maps and institutional affiliations.

Ready to submit your research? Choose BMC and benefit from:

- fast, convenient online submission
- thorough peer review by experienced researchers in your field
- rapid publication on acceptance
- support for research data, including large and complex data types
- gold Open Access which fosters wider collaboration and increased citations
- maximum visibility for your research: over 100M website views per year

At BMC, research is always in progress.

Learn more [biomedcentral.com/submissions](https://biomedcentral.com/submissions)

