



**HAL**  
open science

# Comparative mitogenomic analyses and gene rearrangements reject the alleged polyphyly of a bivalve genus

Regina Cunha, Katy Nicastro, Gerardo Zardi, Celine Madeira, Christopher Mcquaid, Cymon Cox, Rita Castilho

## ► To cite this version:

Regina Cunha, Katy Nicastro, Gerardo Zardi, Celine Madeira, Christopher Mcquaid, et al.. Comparative mitogenomic analyses and gene rearrangements reject the alleged polyphyly of a bivalve genus. PeerJ, 2022, 10, pp.e13953. 10.7717/peerj.13953 . hal-04268129

**HAL Id: hal-04268129**

**<https://hal.science/hal-04268129>**

Submitted on 2 Jan 2024

**HAL** is a multi-disciplinary open access archive for the deposit and dissemination of scientific research documents, whether they are published or not. The documents may come from teaching and research institutions in France or abroad, or from public or private research centers.

L'archive ouverte pluridisciplinaire **HAL**, est destinée au dépôt et à la diffusion de documents scientifiques de niveau recherche, publiés ou non, émanant des établissements d'enseignement et de recherche français ou étrangers, des laboratoires publics ou privés.

# Comparative mitogenomic analyses and gene rearrangements reject the alleged polyphyly of a bivalve genus

Regina L. Cunha<sup>1</sup>, Katy R. Nicastró<sup>1,2,3</sup>, Gerardo I. Zardi<sup>3</sup>,  
Celine Madeira<sup>1</sup>, Christopher D. McQuaid<sup>3</sup>, Cymon J. Cox<sup>1</sup> and  
Rita Castilho<sup>1</sup>

<sup>1</sup> Centre of Marine Sciences, CCMAR, University of Algarve, Campus de Gambelas, Faro, Algarve, Portugal

<sup>2</sup> CNRS, Univ. Littoral Côte d'Opale, UMR 8187 – LOG – Laboratoire d'Océanologie et de Géosciences, Université de Lille, Lille, France

<sup>3</sup> Department of Zoology and Entomology, Rhodes University, Grahamstown, South Africa

## ABSTRACT

**Background:** The order and orientation of genes encoded by animal mitogenomes are typically conserved, although there is increasing evidence of multiple rearrangements among mollusks. The mitogenome from a Brazilian brown mussel (hereafter named B1) classified as *Perna perna* Linnaeus, 1758 and assembled from Illumina short-length reads revealed an unusual gene order very different from other congeneric species. Previous mitogenomic analyses based on the Brazilian specimen and other Mytilidae suggested the polyphyly of the genus *Perna*.

**Methods:** To confirm the proposed gene rearrangements, we sequenced a second Brazilian *P. perna* specimen using the “primer-walking” method and performed the assembly using as reference *Perna canaliculus*. This time-consuming sequencing method is highly effective when assessing gene order because it relies on sequentially-determined, overlapping fragments. We also sequenced the mitogenomes of eastern and southwestern South African *P. perna* lineages to analyze the existence of putative intraspecific gene order changes as the two lineages show overlapping distributions but do not exhibit a sister relationship.

**Results:** The three *P. perna* mitogenomes sequenced in this study exhibit the same gene order as the reference. CREx, a software that heuristically determines rearrangement scenarios, identified numerous gene order changes between B1 and our *P. perna* mitogenomes, rejecting the previously proposed gene order for the species. Our results validate the monophyly of the genus *Perna* and indicate a misidentification of B1.

**Subjects** Evolutionary Studies, Genomics, Marine Biology, Molecular Biology, Zoology

**Keywords** Mitogenomics, *Perna perna*, Gene rearrangements, Polyphyly, Primer-walking

## INTRODUCTION

The order and orientation of genes encoded by animal mitochondrial genomes may be highly variable, particularly among invertebrate lineages (Boore, 1999; Boore, 2006). Multiple rearrangements involving gene reversals, transpositions, reverse transpositions, or tandem duplications with subsequent random loss have been extensively described, for

Submitted 3 March 2022  
Accepted 5 August 2022  
Published 26 September 2022

Corresponding author  
Regina L. Cunha, rcunha@ualg.pt

Academic editor  
Tim Collins

Additional Information and  
Declarations can be found on  
page 10

DOI 10.7717/peerj.13953

© Copyright  
2022 Cunha et al.

Distributed under  
Creative Commons CC-BY 4.0

**OPEN ACCESS**

example, in crustaceans (Kilpert, Held & Podsiadlowski, 2012) and gastropods (Grande, Templado & Zardoya, 2008). While rearrangements are relatively common in mollusks of the same genus (Rawlings et al., 2010), they have not yet been described at the intraspecific level in this group.

Gene order inference in mitogenomes has been traditionally determined by the “primer-walking” strategy, a method that uses universal primers to amplify long PCR fragments over which new specific primers are designed to produce contiguous sequences (Boore, Macey & Medina, 2005). This time-consuming method is highly effective when assessing gene order because it relies on long, and sequentially-determined, overlapping fragments. High-throughput sequencing revolutionized the mitogenomic analysis of non-model organisms by allowing the data to be collected in a faster manner (Briscoe, Hopkins & Waeschenbach, 2016). Nonetheless, the use of Illumina’s short-length reads for gene order assessment still poses notable challenges for those working with organisms without a good reference genome (Singhal, 2013) due to the widespread existence of repeats and the difficulty of assembling non-overlapping smaller fragments.

Studies on the mitochondrial DNA of the brown mussel *Perna perna* have generated controversial results. For instance, the mitogenome of a Brazilian specimen produced with Illumina short-reads showed a unique gene order for the species (Uliano-Silva et al., 2016a), very different from congeneric species. Mitogenome comparisons between the same Brazilian specimen of *P. perna* and *P. viridis* showed seven translocations of protein-coding genes (see Fig. 4 in Uliano-Silva et al., 2016b). Although the monophyly of *Perna* has already been established by previous phylogenies based on the nuclear ITS1 and the mitochondrial COI gene (Wood et al., 2007), *P. perna* was found to be more closely related to *Brachidontes exustus* than to *P. viridis* in the study of Uliano-Silva et al. (2016b). Another study based on nuclear and mitochondrial data indicated a sister relationship between two *P. perna* lineages that exist contiguously along the eastern and southern coasts of South Africa (SA) (Zardi et al., 2007). However, wider sampling including better coverage of the distribution of the species revealed that the two lineages although showing overlapping geographic distributions did not exhibit a sister relationship (Cunha et al., 2014).

The analysis of gene rearrangements in mitogenomes may improve phylogenetic inference at lower taxonomic levels in which incomplete lineage sorting is pervasive and can generate misleading gene trees but where traces of gene duplication, translocation or remoulding have not yet been completely erased over evolutionary time (Rawlings et al., 2010). To confirm the mitochondrial gene order in *P. perna* and phylogenetic relationships within the genus *Perna*, we used the “primer-walking” methodology and Sanger sequencing to generate the mitogenome genome of a second Brazilian *P. perna* specimen. As gene rearrangements are frequently observed in bivalves even at lower taxonomic levels (Feng et al., 2021; Ghiselli et al., 2013), we expanded on previous results producing the mitogenomes of the two SA *Perna* lineages to explore putative intraspecific gene order changes. Phylogenetic analyses included all available *Perna* mitogenomes and other Mytilidae to analyze the alleged polyphyly of the genus.

## MATERIALS AND METHODS

### Taxon sampling, amplification and sequencing

The selection of the *P. perna* specimens used in this study included one individual from each South African lineage (eastern and western) and one specimen from Santa Catarina, Brazil, (hereafter called B2) from the same geographic area as the specimen for which the mitogenome was previously sequenced (B1; NCBI GenBank accession number: [KM655841](https://www.ncbi.nlm.nih.gov/nuclom/KM655841)). Rhodes University approved sampling of the eastern and western South African *P. perna* specimens (Research Reference Number: RES2019/30) and Federal University of Santa Catarina approved sampling of the Brazilian *P. perna* specimen under the MTA – Material Transfer Agreement, SISGEN (<https://sisgen.gov.br/>) registration number: RB435EFp. All specimens were preserved in 96% ethanol.

DNA was extracted using the DNeasy® animal tissue QIAGEN kit (QIAGEN, Hilden, Germany) according to the manufacturer's instructions. Initially, universal primers were used to amplify a portion of the following genes: cytochrome *c* subunit I (LCO 1490 and HCO02198, [Folmer et al., 1994](#)) and 16S rRNA (Sar-L and Sbr-H, [Palumbi, 1996](#)). Primer-walking methodology involves the amplification of long overlapping PCR fragments of about 5–9 kb using specific outwardly facing primers. Those specific primers were designed over amplified fragments using the universal primers for 16S rRNA and COI described above. The design of the primers followed general rules: (1) melting temperatures of the primer pair between 55 and 65 °C and within 5 °C of each other, which is based on the GC content; (2) lengths from 18 to 30 nucleotides; (3) dinucleotide repeats (e.g., ATATAT) were avoided, and (4) intra-primer homology to avert primer-dimer was also avoided. Each long PCR fragment was sequenced with Sanger technology, which produces sequences of about 700 bp. Over these sequences a new set of two inwardly facing primers is designed. The process of connecting fragments is repeated until reproducing the complete circular molecule (of about 16,000 bp for *Perna perna*). The list of the pairs of primers used in this study are in Supplemental information [Table S1](#).

All PCR amplifications were conducted in 25- $\mu$ l reactions containing 2.5  $\mu$ l of 10X TaKaRa LA Taq™ Buffer II (Mg<sup>2+</sup> free), 2.5 mM MgCl<sub>2</sub>, 2.5 mM of each dNTP, 0.5  $\mu$ M of each primer, 1  $\mu$ l template DNA (10 to 100 ng), and Taq DNA polymerase (5 units/ $\mu$ l, TaKaRa LA Taq). The PCR reactions had the following profile: denaturation period at 94 °C lasting for 30 s, followed by: 35 cycles at 98 °C for 10 s, annealing temperature specific to each primer combination for 30 s, extension at 68 °C of 60 s/1 kb; a final extension period at 72 °C for 10 min.

PCR products were cleaned using purified ethanol/sodium acetate precipitation and directly sequenced with the corresponding PCR primers. Sequencing was performed on an Applied Biosystems 3130xl Genetic Analyzer, using Sanger technology and the BigDye® Terminator v3.1 kit. Sequences of the complete mitochondrial genomes *P. perna* from this study were deposited in GenBank under the accession numbers [OK576479](#) (Brazilian specimen B2); [OK576480](#) (western South African specimen) and [OK576481](#) (eastern South African specimen).

## Gene annotation, phylogenetic analyses and gene rearrangements

The approximate locations of the rRNA and protein coding genes were determined by aligning the obtained sequences against the mitochondrial genome of *Perna canaliculus* (NCBI GenBank accession number [MK775558](#)) using Geneious v. 7.1.4 ([Drummond et al., 2010](#)) with the option “highest sensitivity”. Protein coding genes were confirmed by inferring open reading frames (ORFs), and by delimiting start and stop codons. “Cloverleaf” secondary structures of all tRNA genes were reconstructed manually upon localization in Geneious of the specific anticodons, and using the tRNAs of *P. canaliculus* as reference.

To reanalyze phylogenetic relationships within *Perna* and investigate the putative polyphyly of the genus as claimed in ([Uliano-Silva et al., 2016b](#)), we used a dataset (nine taxa, 14,251 bp) that included the newly sequenced genomes and the mitogenomes of the mussels *Perna viridis* ([JQ970425](#)), *P. canaliculus* ([MG766134](#)), *P. perna* ([KM655841](#)), *Brachidontes exustus* ([KM233636](#)) and *Musculista senhousia* ([GU001954](#)). Following the results of ([Uliano-Silva et al., 2016b](#)), we selected *Limnoperna fortunei* ([KP756905](#)) as the most appropriate outgroup. The deduced amino-acid sequences of each of the 13 protein-coding genes and the two ribosomal RNAs (12S rRNA and 16S rRNA) were aligned using Mafft v7.245 (Multiple alignment using Fast Fourier Transform) ([Katoh & Toh, 2010](#)) using the—auto option that automatically selects the appropriate strategy according to data size. Refinement of the alignment was performed “by eye” to maximize positional homology. The aligned sequences were concatenated into a single data set in interleaved Nexus format. The Akaike information criterion ([Akaike, 1973](#)) as implemented in jmodeltest-2.1.10 ([Darriba et al., 2012](#); [Guindon & Gascuel, 2003](#)) selected the GTR+I+ $\Gamma_4$  (general time-reversible substitution model with a proportion of invariant sites and among-site rate variation modeled by a discrete gamma-distribution with four categories) as the evolutionary model that best fitted the dataset.

The best partitioning schemes were identified by PartitionFinder2 v.2.1.1 ([Lanfear et al., 2017](#)) and used in maximum likelihood (ML) analysis. Our ML and BI analyses included *P. canaliculus*, *P. viridis* and four *P. perna* lineages (two specimens from Brazil and two from South Africa). *Musculista senhousia* and *Brachidontes exustus* were also included to compare with results from [Uliano-Silva et al. \(2016b\)](#). We performed the ML analysis of the 13 protein-coding and the two ribosomal genes with RAxML v8.2.10 ([Stamatakis, 2014](#)) using the options – M that switches on estimation of individual per-partition branch lengths and – q which specifies the file name which contains the assignment of models to alignment partitions for multiple models of substitution under the GTRGAMMA (gamma model of rate heterogeneity). The best-scoring tree was determined from 100 randomized maximum-parsimony starting trees using the rapid hill-climbing algorithm. 500 bootstrap replicates were drawn on each best-scored ML tree using the exhaustive bootstrap algorithm.

Bayesian Inference was conducted with MrBayes v.3.2.7a ([Ronquist et al., 2012](#)) under the selected model (lset nst = 6 rates = invgamma;) using the same dataset as in ML

**Table 1** Comparison of the protein-coding and ribosomal gene sizes (in base pairs) between the three mitochondrial genomes newly sequenced.

	<i>Perna perna</i> ESA	<i>Perna perna</i> WSA	<i>Perna perna</i> Brazil (B2)	<i>Perna perna</i> Brazil (B1)
Total size	16,081	16,093	16,065	18,415
l-rRNA	1,114	1,118	1,118	1,185
s-rRNA	782	782	782	818
atp6	714	714	714	509
atp8	161	161	161	absent
cytb	1,151	1,151	1,151	1,157
cox1	1,550	1,550	1,550	1,628
cox2	692	692	692	704
cox3	857	854	854	935
ND1	935	935	935	905
ND2	953	953	953	935
ND3	353	353	353	350
ND4	1,310	1,310	1,310	965
ND4L	266	266	266	260
ND5	1,679	1,679	1,679	1,637
ND6	476	476	476	536

**Note:**

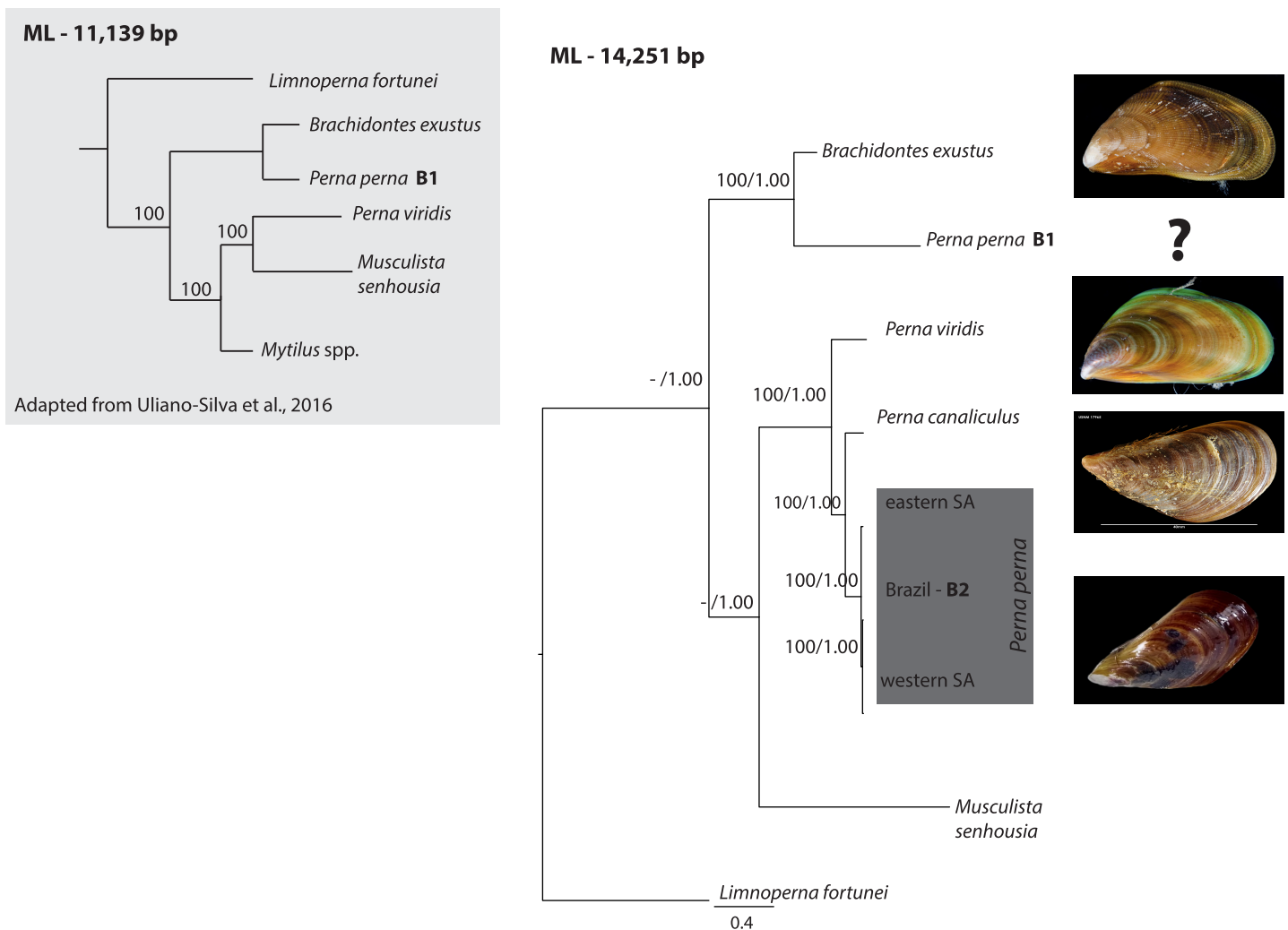
Comparison of the protein-coding and ribosomal gene sizes (in base pairs) between the three mitochondrial genomes newly sequenced (highlighted in bold) and the *Perna perna* mitogenome (B1) published in (Uliano-Silva et al., 2016a). ESA, eastern South Africa; WSA, western South Africa.

analysis. The Metropolis coupled Markov chain Monte Carlo (MCMCMC) was sampled for  $2 \times 10^7$  generations (two simultaneous MC chains) with a sampling frequency of 1,000.

We used CREx (Bernt et al., 2007) to determine the most parsimonious scenario for pairwise gene rearrangements, which included transpositions, reverse transpositions, reversals and tandem-duplication-random-loss (TDRL), given a phylogenetic hypothesis. The analysis was performed by applying the common intervals parameter for distance measurement. Based on the results from (Lubošny et al., 2020) and our ML analyses we consider the gene order of *Musculista senhousia* as the ancestral gene order for the genus *Perna*, and the gene order of *Limnoperna fortunei* as the ancestral gene order for *Brachidontes exustus* and the Brazilian specimen B1.

## RESULTS

The three *P. perna* mitogenomes sequenced in this study encode a total of 13 protein-coding genes, two rRNA (Table 1) and 23 tRNAs, one more (tRNA-Met, codon AUA) than usually found in metazoan mitochondrial DNA but already described for other bivalves (Hoffmann, Boore & Brown, 1992). The heavy strand encoded all genes. Overlapping of adjacent genes occurred between some of the tRNAs (Leu1-Asn; Ile-Gly) and between protein-coding genes (ND4-ATP8) in the three genomes. All the tRNAs of the three mitogenomes present a similar typical “cloverleaf” structure with four arms (acceptor, DHU, anti-codon and T Ψ C) except the two tRNA Ser that lack the DHU-arm, as

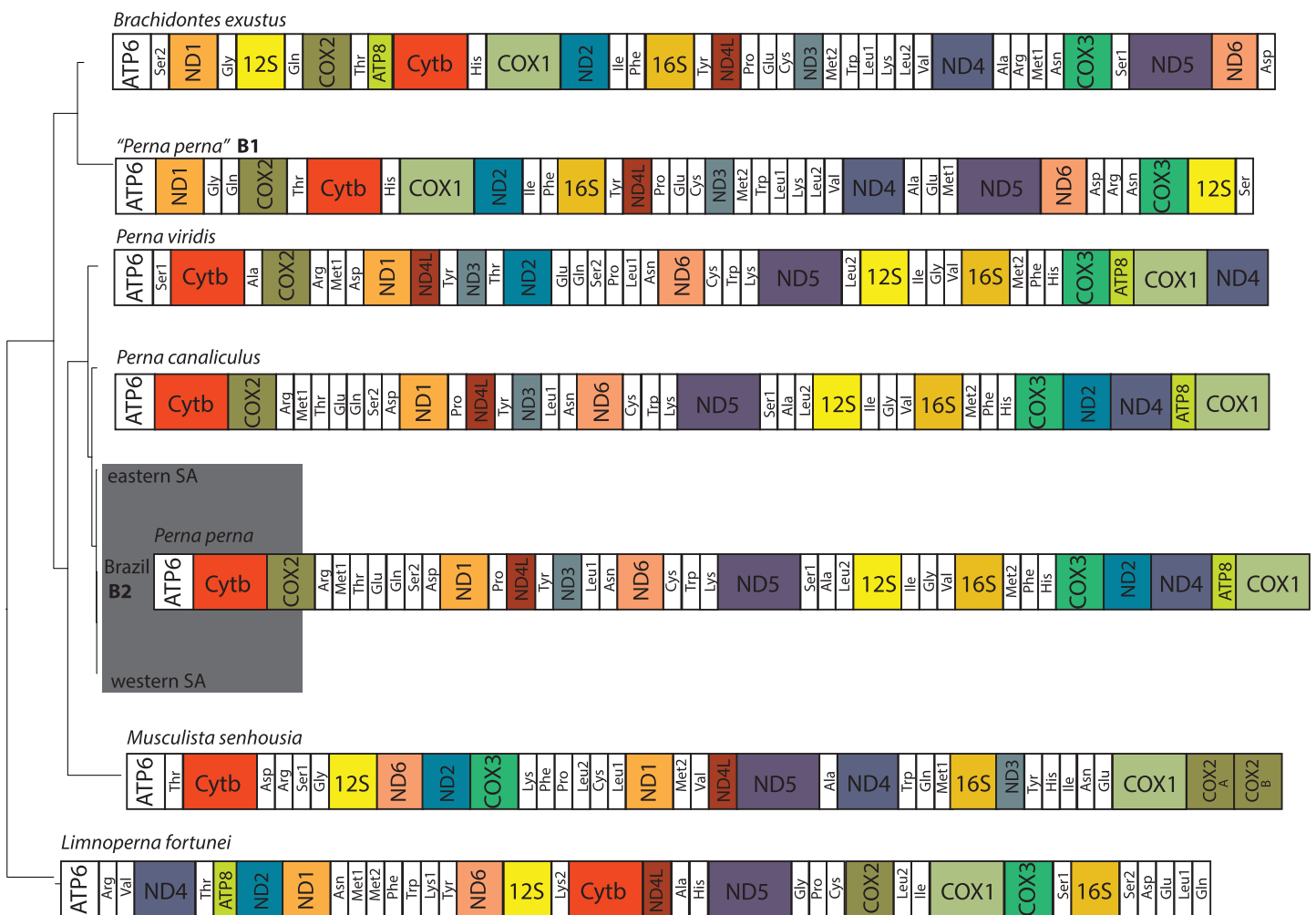


**Figure 1** Phylogenetic relationships of *Perna* and other Mytilidae based on complete mitochondrial genomes. Phylogenetic relationships of *Perna* and other Mytilidae based on a maximum likelihood (ML) analysis of 12 mitochondrial protein-coding genes (ATP8 excluded) and the two ribosomal RNAs (12S and 16S) combined into an alignment of 14,251 base pairs. *Limnoperna fortunei* was selected as outgroup. *Perna perna* specimens sequenced in this study are highlighted in dark grey. Numbers at the nodes represent ML bootstrap proportions and BI posterior probabilities. Only values above 70% are depicted. B1 and B2: Brazilian *P. perna* samples sequenced in (Uliano-Silva et al., 2016a) and in this study, respectively. SA: South Africa. The inset highlighted in light grey shows a ML topology based on 11,139 bp corresponding to 12 mitochondrial protein-coding genes (ATP8 excluded) adapted from (Uliano-Silva et al., 2016b). Values at the nodes represent ML bootstrap proportions.

Full-size DOI: 10.7717/peerj.13953/fig-1

observed in nearly all metazoans (Pons et al., 2019). The sequences of 12 mitochondrial protein-coding genes (ATP8 was excluded because it is not present in *Musculista senhousia* and *P. perna* B1) and the two ribosomal RNAs from the analyzed Mytilidae were combined into an alignment of 14,251 nucleotide positions.

The ML (-ln L = 89440.34) tree shown in Fig. 1 exhibited an identical topology to the BI tree (-ln L = 90617.33). All *Perna* specimens clustered together except one of the Brazilian specimens of *P. perna* (B1) that grouped with *Brachidontes exustus* (Fig. 1). The western South African *P. perna* lineage grouped with our Brazilian *P. perna* (B2) and the eastern



**Figure 2** Hypothesized mitochondrial gene order of the analyzed Mytilidae. All genes are encoded by the heavy strand. *Perna perna* specimens sequenced in this study are highlighted in dark grey. B1 and B2: Brazilian *P. perna* samples sequenced in (Uliano-Silva et al., 2016a) and in this study, respectively. SA: South Africa.  
Full-size DOI: 10.7717/peerj.13953/fig-2

South African *P. perna* was retrieved as their sister lineage (Fig. 1). *Perna perna* (the three specimens sequenced in this study) and *P. canaliculus* were recovered as sister species.

Given previous results that suggested the non-monophyly of the genus *Perna* (Uliano-Silva et al., 2016b), we performed a nucleotide BLAST search (<https://blast.ncbi.nlm.nih.gov/>) using the cytochrome oxidase subunit I (COI) gene of the published Brazilian mitogenome B1 to find the closest matching sequences in NCBI GenBank database. COI is the most common gene for DNA barcoding and widely used for species identification. The BLAST search indicated that the COI from the Brazilian mitogenome of *P. perna* (B1) is 100% similar to *Mytilaster solisianus* (synonymized with *Brachidontes solisianus*) and there was no match with any other *Perna* species.

The two Brazilian *P. perna* mitochondrial genomes (B1 and B2) differed in size (Fig. 2). While our sample B2 (16,065 bp) is similar in length to the other two *Perna* species (*P. viridis*: 16,014 bp and *P. canaliculus*: 16,065 bp), B1 is 2,350 bp longer (18,415 bp).



The length of the mitogenomes of the eastern and western *P. perna* lineages were 16,081 and 16,093 bp, respectively. The gene ATP8 was only absent from the annotations of the Brazilian B1 *P. perna* and *M. senhousia* mitogenomes. We observed extensive differences in the gene order among the bivalve genera analyzed here (Fig. 2). Based on CREX analysis, the gene order of *P. viridis* evolved from its ancestral gene order (*M. senhousia*) as the result of a transposition of the block [ND3+Tyr] in which ND3 moved to the right and the tRNA Tyr to the left and three TDRLs (Fig. S1). The evolution of the gene order of *P. canaliculus*/*P. perna* eastern, western SA and Brazil B2 from its ancestral gene order (*P. viridis*) involved the following steps: (1) a transposition of the block [(ATP8+COX1)+ND4] in which (ATP8+COX1) moved to the right and the ND4 moved to the left; (2) the transposition of the ND2 that moved to the left; (3) two TDRLs (Fig. S2). According to our phylogenetic hypothesis, the gene order of the Brazilian specimen B1 evolved from the ancestral gene order of *L. fortunei* as the result of four TDRLs (Fig. S3). If we consider that the Brazilian specimen B1 evolved from the ancestral gene order of *M. senhousia* as the remaining *Perna*, we have to consider a transposition from the gene block (Ala+ND4) in which Ala moved to the right and ND4 to the left and four TDRLs (Fig. S4).

## DISCUSSION

Our phylogeny based on 12 mitochondrial genes (ATP8 excluded) and the two ribosomal RNAs showed that the western South African *P. perna* lineage groups with our Brazilian *P. perna* specimen B2. *Perna canaliculus* is retrieved as sister species of all *Perna* with the exception of the Brazilian specimen B1 (Fig. 1). A recent mitogenomic study analyzing mytilid mussels also found a sister relationship between *P. perna* and *P. canaliculus* (Lubošny *et al.*, 2020). These results are in agreement with a previous study based on a fragment of the COI gene and the nuclear ITS1 (Cunha *et al.*, 2014). In the phylogenetic analysis of *Uliano-Silva et al.* (2016b) also based on the same 12 mitochondrial protein-coding genes, the Brazilian *P. perna* B1 grouped with *Brachidontes exustus* and *P. viridis* with *Musculista senhousia* (Fig. 1-inset). Despite our larger taxon sampling (we included *P. canaliculus* and three more *P. perna* specimens in the analyses), the Brazilian *P. perna* sample B1 and *B. exustus* remained as sister species in all analyses (Fig. 1).

The well-established monophyly of the genus *Perna* (Wood *et al.*, 2007) raises concerns regarding the taxonomic identification of the Brazilian *P. perna* specimen B1.

The nucleotide BLAST search we performed indicated 100% similarity of the COI gene between the *P. perna* mitogenome B1 sequenced by *Uliano-Silva et al.* (2016a) and *Mytilaster* (“*Brachidontes*”) *solisianus*. A misidentification of the specimen B1 could explain why it grouped with *B. exustus* instead of clustering with the remaining *P. perna*. We could not retrieve from the authors (*Uliano-Silva et al.*, 2016a) any voucher picture of the specimen used to produce the mitogenome B1 that would enable us confirming its taxonomic classification. Further, a previous study using a chromosomal approach already pointed out that the COI from the Brazilian specimen was most likely incorrectly assigned to *P. perna* (*García-Souto et al.*, 2017).

Gene order changes are usually associated with tRNAs due to their stem-and-loop structure (*Saccone et al.*, 1999) and translocations involving protein-coding genes are

much rarer among metazoans (Rawlings, Collins & Bieler, 2001). Interestingly, the inferred rearrangements of the evolution of the gene order of *P. canaliculus* from its ancestral gene order (*P. viridis*) involved the transposition of the protein-coding genes ATP8, COX1, ND4 and ND2 (Supplemental Information S2). Given our phylogenetic hypothesis (Fig. 1), the inferred evolution of the gene order of *P. perna* B1 from its ancestral gene order (*L. fortunei*) involved the occurrence of four TDRLs (Supplemental Information S3). The alternative hypothesis of the evolution of the gene order of *P. perna* B1 from the ancestral gene order of the remaining *Perna* (*M. senhousia*) would imply four TDRLs and a transposition, which is less parsimonious and reinforces the idea of misidentification of B1 (Fig. S4).

The ATP8 is absent from the annotation of the Brazilian *P. perna* B1 mitogenome (Fig. 2). The absence of this gene may result from annotation errors due to its short and variable length (Breton, Stewart & Hoeh, 2010), which we believe is the case of *P. perna* B1, considering that ATP8 is present in its sister taxon *B. exustus*. However, we cannot fully discard its absence because there is no mitogenome available of *M. solisianus*, the species we consider correspond to the mitogenome *P. perna* B1. Regardless of the frequent gene rearrangements reported in bivalves, even at lower taxonomic levels (Rawlings, Collins & Bieler, 2001), and previous results suggesting independent origins for the eastern and western South African *P. perna* lineages (Cunha et al., 2014), we found no differences in the mitogenome gene order at the intraspecific level (Fig. 2).

The development of next-generation sequencing such as Illumina short-read sequencing, provides genome-wide data quickly and at relatively low cost. However, the existence of repetitive regions and missing data may complicate the assembly, even if a close reference is available (Treangen & Salzberg, 2011). The B1 mitogenome was produced with Illumina short-reads. We used the “primer-walking” methodology, which reduces the source of error due to the existence of larger overlapping fragments and the absence of repeats. The assembly of B1 was performed using as reference the *P. viridis* mitogenome (NC\_018362), while we used *P. canaliculus*, which is the sister species of *P. perna*. We were not able to perform a new assembly of B1 using *P. canaliculus* as reference to analyze if gene order would change or to confirm that ATP8 was not present, as raw reads are not available in either public databases or from the authors.

## CONCLUSIONS

The previously published mitogenome of the brown mussel *Perna perna* from a Brazilian specimen (Uliano-Silva et al., 2016a) has a strikingly different gene order compared to its congeneric counterparts. Here, we used the primer-walking methodology to evaluate the unexpected gene order of this bivalve species. This time-consuming method produces very accurate results because of relying on sequentially-determined, overlapping fragments. We also inferred putative gene rearrangements at the intraspecific level using *P. canaliculus* as reference to facilitate annotation. The mitogenomes of the three *P. perna* specimens sequenced in this study (a second Brazilian specimen and the two South African lineages) showed the same gene order as the reference. Our results suggest a misidentification of the Brazilian specimen B1 used to produce the published mitogenome.

The non-monophyly of the genus *Perna* previously claimed by [Uliano-Silva et al. \(2016b\)](#) is not corroborated by our data.

## ACKNOWLEDGEMENTS

We are very grateful to Paulo A. Horta and Paulo R. Pagliosa for collecting the sample of *Perna perna* from Brazil and dealing with all the required permits. We also thank Luana Corona for helping in the laboratory. Phylogenetic analyses were performed on the R2C2 computational cluster facility provided by the IT Department of the University of Algarve and on the CCMAR computational cluster facility (CETA).

## ADDITIONAL INFORMATION AND DECLARATIONS

### Funding

Regina L. Cunha was funded by the transitional norm—DL 57/2016/CP1361/CT0013. This study received Portuguese national funds from FCT—Foundation for Science and Technology through project UIDB/04326/2020, and from the operational programmes CRESC Algarve 2020 and COMPETE 2020 through projects EMBRC.PT ALG-01-0145-FEDER-022121 and BIODATA.PT ALG-01-0145-FEDER-022231. This research was further supported by the Foundation for Science and Technology (FCT—MEC, Portugal (Grant Number: EXPL/BIA-BMA/0682/2021)), and the National Research Foundation of South Africa (Grant Number: 64801). The funders had no role in study design, data collection and analysis, decision to publish, or preparation of the manuscript.

### Grant Disclosures

The following grant information was disclosed by the authors:

DL 57/2016/CP1361/CT0013.

FCT—Foundation for Science and Technology Through Project: UIDB/04326/2020.

CRESC Algarve 2020 and COMPETE 2020 Through Projects: EMBRC.PT ALG-01-0145-FEDER-022121 and BIODATA.PT ALG-01-0145-FEDER-022231.

Foundation for Science and Technology (FCT—MEC, Portugal): EXPL/BIA-BMA/0682/2021.

National Research Foundation of South Africa: 64801.

### Competing Interests

Rita Castilho is an Academic Editor for PeerJ.

### Author Contributions

- Regina L Cunha conceived and designed the experiments, performed the experiments, analyzed the data, prepared figures and/or tables, authored or reviewed drafts of the article, and approved the final draft.
- Katy R Nicastro conceived and designed the experiments, authored or reviewed drafts of the article, and approved the final draft.
- Gerardo I Zardi conceived and designed the experiments, authored or reviewed drafts of the article, and approved the final draft.

- Celine Madeira performed the experiments, authored or reviewed drafts of the article, and approved the final draft.
- Christopher D McQuaid conceived and designed the experiments, authored or reviewed drafts of the article, and approved the final draft.
- Cymon J Cox analyzed the data, authored or reviewed drafts of the article, and approved the final draft.
- Rita Castilho analyzed the data, prepared figures and/or tables, authored or reviewed drafts of the article, and approved the final draft.

### Field Study Permissions

The following information was supplied relating to field study approvals (*i.e.*, approving body and any reference numbers):

The Federal University of Santa Catarina, Brazil approved sampling regarding the *Perna perna* specimen under the MTA-Material Transfer Agreement, SISGEN (registration number: RB435EFp).

The sampling of the two *Perna perna* specimens from South Africa was approved by Rhodes University under the project RES2019/30.

### DNA Deposition

The following information was supplied regarding the deposition of DNA sequences:

The sequences of the complete mitogenomes of *P. perna* produced in this study are available in NCBI GenBank: [OK576479](#), [OK576480](#) and [OK576481](#) corresponding to the Brazilian, western and eastern South Africa samples, respectively.

### Data Availability

The following information was supplied regarding data availability:

The complete mitochondrial genomes from three *Perna perna* specimens: western South Africa (W2); eastern South Africa (E2) and Brazil (B2) and the annotations from each of the three mitogenomes of *Perna perna* are available in the [Supplemental Files](#).

### Supplemental Information

Supplemental information for this article can be found online at <http://dx.doi.org/10.7717/peerj.13953#supplemental-information>.

## REFERENCES

- Akaike H. 1973.** Information theory as an extension of the maximum likelihood principle. In: Parzen E, Tanabe K, Kitagawa G, eds. *2nd International Symposium on Information Theory*. Budapest, Hungary: Akademiai Kiado, 267–281.
- Bernt M, Merkle D, Ramsch K, Fritsch G, Perseke M, Bernhard D, Schlegel M, Stadler PF, Middendorf M. 2007.** CREx: inferring genomic rearrangements based on common intervals. *Bioinformatics* **23**(1):2957–2958 DOI [10.1093/bioinformatics/btm468](#).
- Boore JL. 1999.** Animal mitochondrial genomes. *Nucleic Acids Research* **27**(8):1767–1780 DOI [10.1093/nar/27.8.1767](#).
- Boore JL. 2006.** The use of genome-level characters for phylogenetic reconstruction. *Trends in Ecology & Evolution* **21**(8):439–446 DOI [10.1016/j.tree.2006.05.009](#).

- Boore JL, Macey JR, Medina M. 2005.** Sequencing and comparing whole mitochondrial genomes of animals. *Methods in Enzymology* **395**:312–348 DOI [10.1016/S0076-6879\(05\)95019-2](https://doi.org/10.1016/S0076-6879(05)95019-2).
- Breton S, Stewart DT, Hoeh WR. 2010.** Characterization of a mitochondrial ORF from the gender-associated mtDNAs of *Mytilus* spp.(Bivalvia: Mytilidae): identification of the missing ATPase 8 gene. *Marine Genomics* **3**(1):11–18 DOI [10.1016/j.margen.2010.01.001](https://doi.org/10.1016/j.margen.2010.01.001).
- Briscoe AG, Hopkins KP, Waeschenbach A. 2016.** High-throughput sequencing of complete mitochondrial genomes. In: *Marine Genomics*. Berlin: Springer, 45–64.
- Cunha RL, Nicastro KR, Costa J, McQuaid CD, Serrão EA, Zardi GI. 2014.** Wider sampling reveals a non-sister relationship for geographically contiguous lineages of a marine mussel. *Ecology and Evolution* **4**(11):2070–2081 DOI [10.1002/ece3.1033](https://doi.org/10.1002/ece3.1033).
- Darriba D, Taboada GL, Doallo R, Posada D. 2012.** jModelTest 2: more models, new heuristics and parallel computing. *Nature Methods* **9**(8):772 DOI [10.1038/nmeth.2109](https://doi.org/10.1038/nmeth.2109).
- Drummond AJBA, Buxton S, Cheung M, Cooper A, Duran C, Field M, Heled J, Kearse M, Markowitz S, Moir R, Stones-Havas S, Sturrock S, Thierer T, Wilson A. 2010.** Geneious v7.1.4. Available at <http://www.geneious.com> (accessed 11 October 2021).
- Feng J, Guo Y, Yan C, Ye Y, Yan X, Li J, Xu K, Guo B, Lü Z. 2021.** Novel gene rearrangement in the mitochondrial genome of *Siliqua minima* (Bivalvia, Adapedonta) and phylogenetic implications for Imparidentia. *PLOS ONE* **16**(4):e0249446 DOI [10.1371/journal.pone.0249446](https://doi.org/10.1371/journal.pone.0249446).
- Folmer O, Black M, Hoeh W, Lutz R, Vrijenhoek R. 1994.** DNA primers for amplification of mitochondrial cytochrome c oxidase subunit I from diverse metazoan invertebrates. *Molecular Marine Biology and Biotechnology* **3**(5):294–297.
- García-Souto D, Sumner-Hempel A, Ferverza S, Pérez-García C, Torreiro A, González-Romero R, Eirín-López JM, Morán P, Pasantes JJ. 2017.** Detection of invasive and cryptic species in marine mussels (Bivalvia, Mytilidae): a chromosomal perspective. *Journal for Nature Conservation* **39**:58–67 DOI [10.1016/j.jnc.2017.07.005](https://doi.org/10.1016/j.jnc.2017.07.005).
- Ghiselli F, Milani L, Guerra D, Chang PL, Breton S, Nuzhdin SV, Passamonti M. 2013.** Structure, transcription, and variability of metazoan mitochondrial genome: perspectives from an unusual mitochondrial inheritance system. *Genome Biology and Evolution* **5**(8):1535–1554 DOI [10.1093/gbe/evt112](https://doi.org/10.1093/gbe/evt112).
- Grande C, Templado J, Zardoya R. 2008.** Evolution of gastropod mitochondrial genome arrangements. *BMC Evolutionary Biology* **8**:61 DOI [10.1186/1471-2148-8-61](https://doi.org/10.1186/1471-2148-8-61).
- Guindon S, Gascuel O. 2003.** A simple, fast and accurate algorithm to estimate large phylogenies by maximum likelihood. *Systematic Biology* **52**(5):696–704 DOI [10.1080/10635150390235520](https://doi.org/10.1080/10635150390235520).
- Hoffmann RJ, Boore J, Brown W. 1992.** A novel mitochondrial genome organization for the blue mussel, *Mytilus edulis*. *Genetics* **131**(2):397–412 DOI [10.1093/genetics/131.2.397](https://doi.org/10.1093/genetics/131.2.397).
- Katoh K, Toh H. 2010.** Parallelization of the MAFFT multiple sequence alignment program. *Bioinformatics* **26**(5):1899–1900 DOI [10.1093/bioinformatics/btq224](https://doi.org/10.1093/bioinformatics/btq224).
- Kilpert F, Held C, Podsiadlowski L. 2012.** Multiple rearrangements in mitochondrial genomes of Isopoda and phylogenetic implications. *Molecular Phylogenetics and Evolution* **64**(1):106–117 DOI [10.1016/j.ympev.2012.03.013](https://doi.org/10.1016/j.ympev.2012.03.013).
- Lanfear R, Frandsen PB, Wright AM, Senfeld T, Calcott B. 2017.** PartitionFinder 2: new methods for selecting partitioned models of evolution for molecular and morphological phylogenetic analyses. *Molecular Biology and Evolution* **34**(3):772–773 DOI [10.1093/molbev/msw260](https://doi.org/10.1093/molbev/msw260).
- Lubośny M, Przyłucka A, Śmietanka B, Burzyński A. 2020.** Semimytilus algosus: first known hermaphroditic mussel with doubly uniparental inheritance of mitochondrial DNA. *Scientific Reports* **10**(1):1–12 DOI [10.1038/s41598-020-67976-6](https://doi.org/10.1038/s41598-020-67976-6).

- Palumbi SR. 1996.** Nucleic acids II: the polymerase chain reaction. In: Hillis DM, Moritz C, Mable BK, eds. *Molecular Systematics*. Second Edition. Massachusetts: Sinauer Associates, 205–247.
- Pons J, Bover P, Bidegaray-Batista L, Arnedo MA. 2019.** Arm-less mitochondrial tRNAs conserved for over 30 millions of years in spiders. *BMC Genomics* **20**(1):665 DOI [10.1186/s12864-019-6026-1](https://doi.org/10.1186/s12864-019-6026-1).
- Rawlings TA, Collins TM, Bieler R. 2001.** A major mitochondrial gene rearrangement among closely related species. *Molecular Biology and Evolution* **18**(8):1604–1609 DOI [10.1093/oxfordjournals.molbev.a003949](https://doi.org/10.1093/oxfordjournals.molbev.a003949).
- Rawlings TA, MacInnis MJ, Bieler R, Boore JL, Collins TM. 2010.** Sessile snails, dynamic genomes: gene rearrangements within the mitochondrial genome of a family of caenogastropod molluscs. *BMC Genomics* **11**(1):1–24 DOI [10.1186/1471-2164-11-440](https://doi.org/10.1186/1471-2164-11-440).
- Ronquist F, Teslenko M, van der Mark P, Ayres DL, Darling A, Höhna S, Larget B, Liu L, Suchard MA, Huelsenbeck JP. 2012.** MrBayes 3.2: efficient Bayesian phylogenetic inference and model choice across a large model space. *Systematic Biology* **61**(3):539–542 DOI [10.1093/sysbio/sys029](https://doi.org/10.1093/sysbio/sys029).
- Saccone C, De Giorgi C, Gissi C, Pesole G, Reyes A. 1999.** Evolutionary genomics in Metazoa: the mitochondrial DNA as a model system. *Gene* **238**(1):195–209 DOI [10.1016/S0378-1119\(99\)00270-X](https://doi.org/10.1016/S0378-1119(99)00270-X).
- Singhal S. 2013.** De novo transcriptomic analyses for non-model organisms: an evaluation of methods across a multi-species data set. *Molecular Ecology Resources* **13**(3):403–416 DOI [10.1111/1755-0998.12077](https://doi.org/10.1111/1755-0998.12077).
- Stamatakis A. 2014.** RAXML version 8: a tool for phylogenetic analysis and post-analysis of large phylogenies. *Bioinformatics* **30**(9):1312–1313 DOI [10.1093/bioinformatics/btu033](https://doi.org/10.1093/bioinformatics/btu033).
- Treangen TJ, Salzberg SL. 2011.** Repetitive DNA and next-generation sequencing: computational challenges and solutions. *Nature Reviews Genetics* **13**(1):36–46 DOI [10.1038/nrg3117](https://doi.org/10.1038/nrg3117).
- Uliano-Silva M, Americo J, Bastos AS, Furtado C, Rebelo MDF, Prosdocimi F. 2016a.** Complete mitochondrial genome of the brown mussel *Perna perna* (Bivalve, Mytilidae). *Mitochondrial DNA Part A* **27**:3955–3956 DOI [10.3109/19401736.2014.989502](https://doi.org/10.3109/19401736.2014.989502).
- Uliano-Silva M, Americo JA, Costa I, Schomaker-Bastos A, de Freitas Rebelo M, Prosdocimi F. 2016b.** The complete mitochondrial genome of the golden mussel *Limnoperna fortunei* and comparative mitogenomics of Mytilidae. *Gene* **577**(2):202–208 DOI [10.1016/j.gene.2015.11.043](https://doi.org/10.1016/j.gene.2015.11.043).
- Wood AR, Apte S, MacAvoy ES, Gardner J. 2007.** A molecular phylogeny of the marine mussel genus *Perna* (Bivalvia: Mytilidae) based on nuclear (ITS1&2) and mitochondrial (COI) DNA sequences. *Molecular Phylogenetics and Evolution* **44**(2):685–698 DOI [10.1016/j.ympev.2006.12.019](https://doi.org/10.1016/j.ympev.2006.12.019).
- Zardi GI, McQuaid CD, Teske PR, Barker NP. 2007.** Unexpected genetic structure of mussel populations in South Africa: indigenous *Perna perna* and invasive *Mytilus galloprovincialis*. *Marine Ecology Progress Series* **337**:135–144 DOI [10.3354/meps337135](https://doi.org/10.3354/meps337135).