



**HAL**  
open science

## A stand-alone polarimetric acquisition system for producing a long-term skylight dataset

Léo Poughon, Jocelyn Monnoyer, Stéphane Viollet, Vincent Aubry, Julien R Serres

► **To cite this version:**

Léo Poughon, Jocelyn Monnoyer, Stéphane Viollet, Vincent Aubry, Julien R Serres. A stand-alone polarimetric acquisition system for producing a long-term skylight dataset. IEEE. IEEE Sensors 2023, Oct 2023, Vienna, Austria. IEEE, 2023, 10.1109/SENSORS56945.2023.10325176 . hal-04267779v1

**HAL Id: hal-04267779**

**<https://hal.science/hal-04267779v1>**

Submitted on 2 Nov 2023 (v1), last revised 6 Sep 2024 (v2)

**HAL** is a multi-disciplinary open access archive for the deposit and dissemination of scientific research documents, whether they are published or not. The documents may come from teaching and research institutions in France or abroad, or from public or private research centers.

L'archive ouverte pluridisciplinaire **HAL**, est destinée au dépôt et à la diffusion de documents scientifiques de niveau recherche, publiés ou non, émanant des établissements d'enseignement et de recherche français ou étrangers, des laboratoires publics ou privés.



Distributed under a Creative Commons Attribution 4.0 International License



# A stand-alone polarimetric acquisition system for producing a long-term skylight dataset

Léo PUGHON<sup>1,2</sup>, Jocelyn MONNOYER<sup>1,2</sup>, Stéphane VIOLLET<sup>1</sup>, Vincent AUBRY<sup>2</sup>, and Julien R SERRES<sup>1,3</sup>

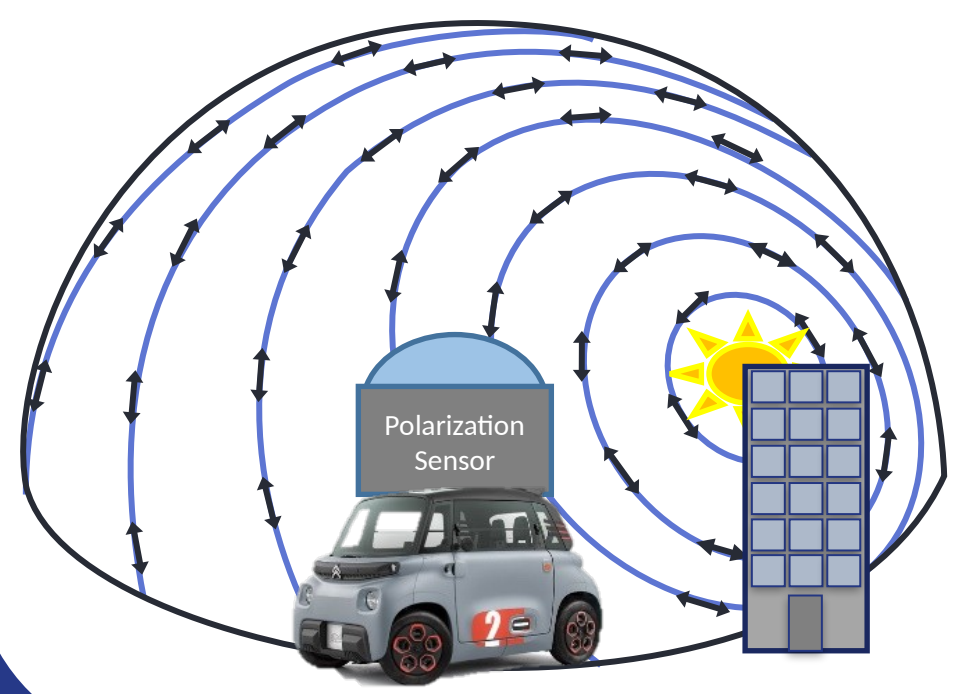
<sup>1</sup>Aix Marseille Univ., CNRS, ISM, Marseille, France

<sup>2</sup>Stellantis, Velizy-Villacoublay, France

<sup>3</sup>Institut Universitaire de France, Paris, France

## Context

In nature, some **desert ants** [1] are able to **navigate without GPS** using a heading derived from sun position by measuring skylight polarization.



How does varying weather change the skylight polarization pattern?



Goal: create a long-term database of the skylight polarization in a fixed location

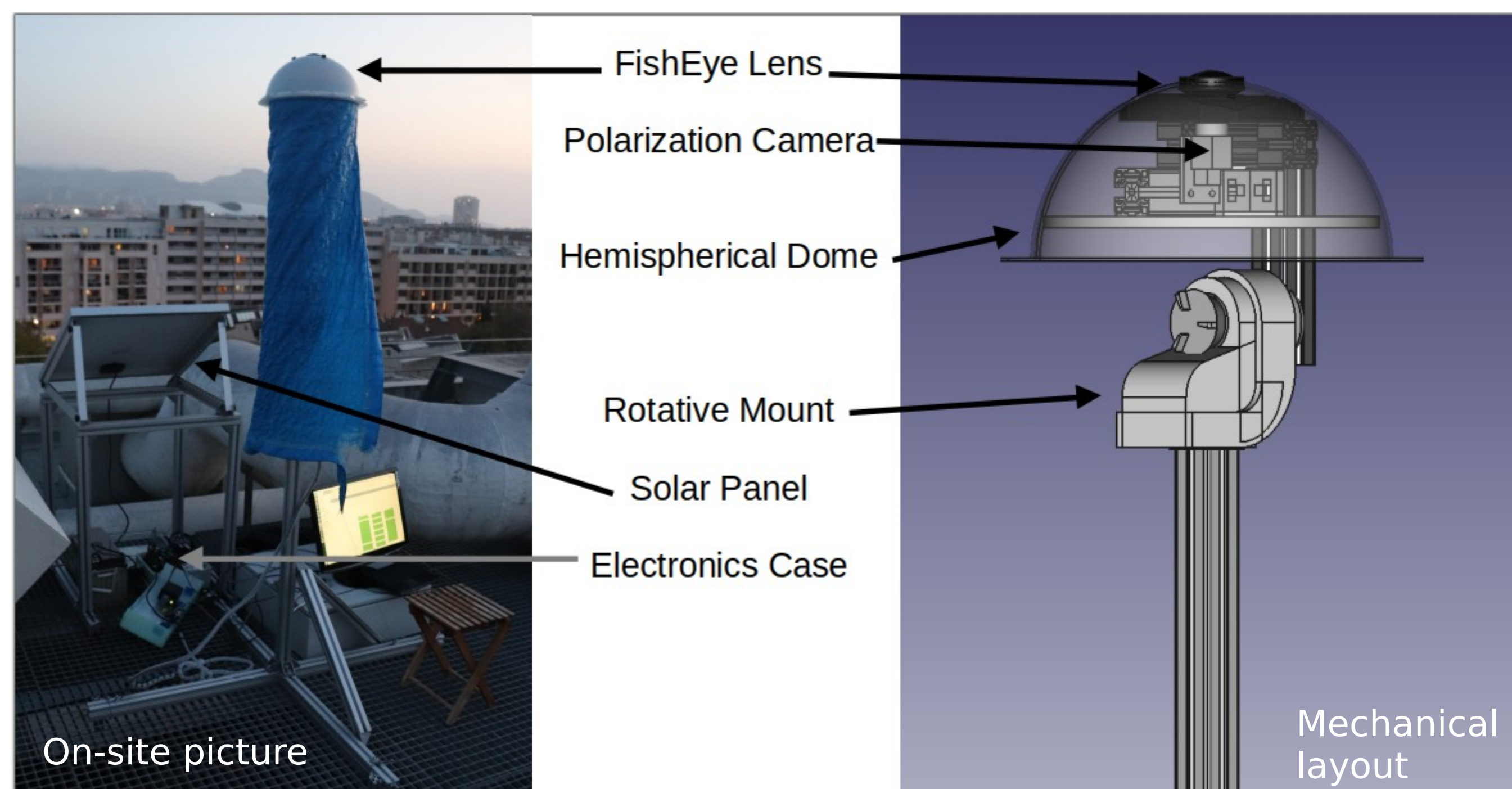
## Methods

State-of-the-art for skylight polarization imaging use a **Division of Focal Plane (DoFP)** sensor with a fisheye lens. [2]

→ We use a color-polarization camera (Sony IMX250MYR sensor) fixated on a rotative telescope mount with a fisheye lens (Fujinon FE185C057HA-1)

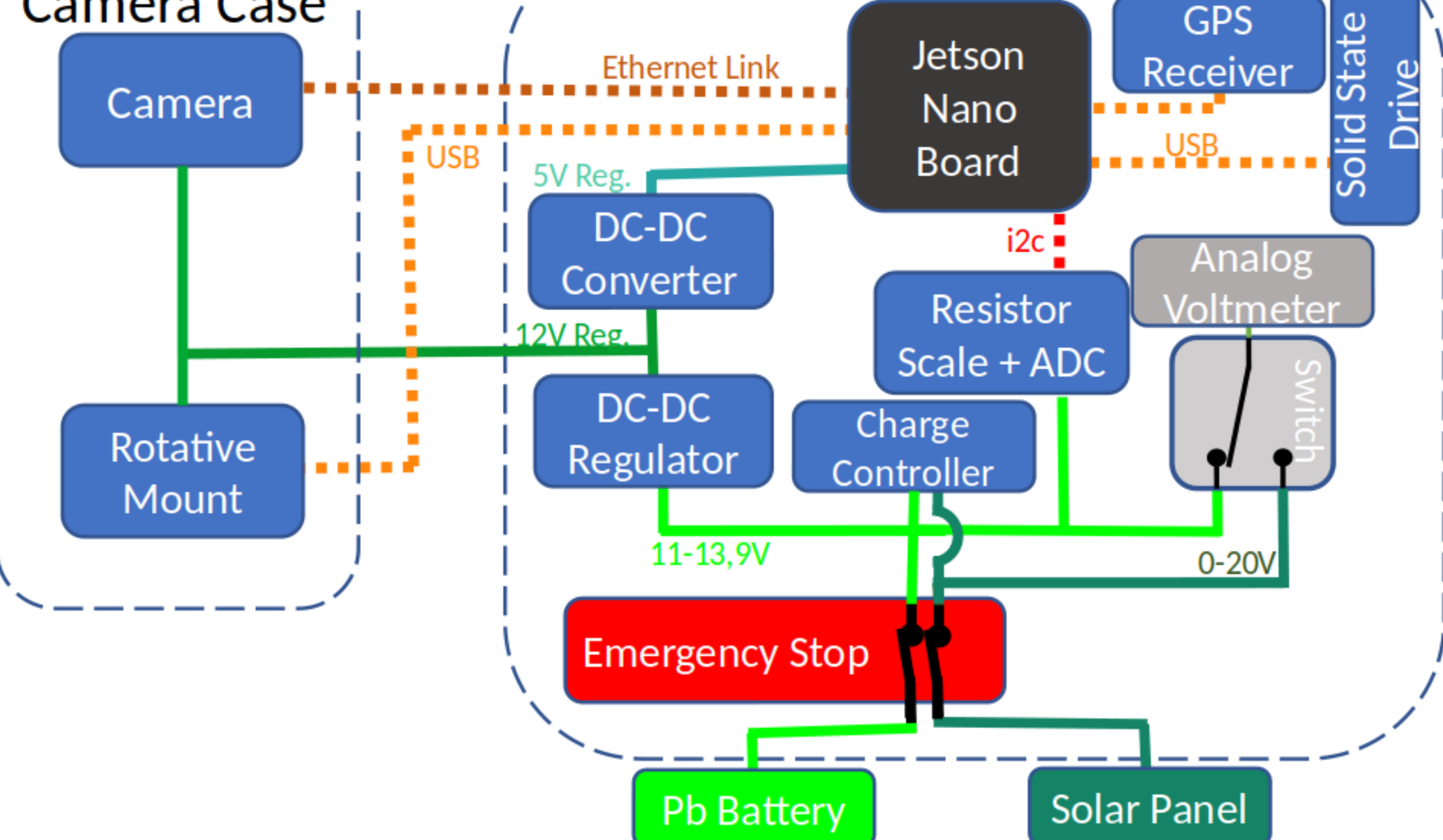
90°	45°	90°	45°
135°	0°	135°	0°
90°	45°	90°	45°
135°	0°	135°	0°

Camera left on a distant roof → Wide view angle and vandalism-free, with weather protection and autonomous solar power source.



## Camera Case

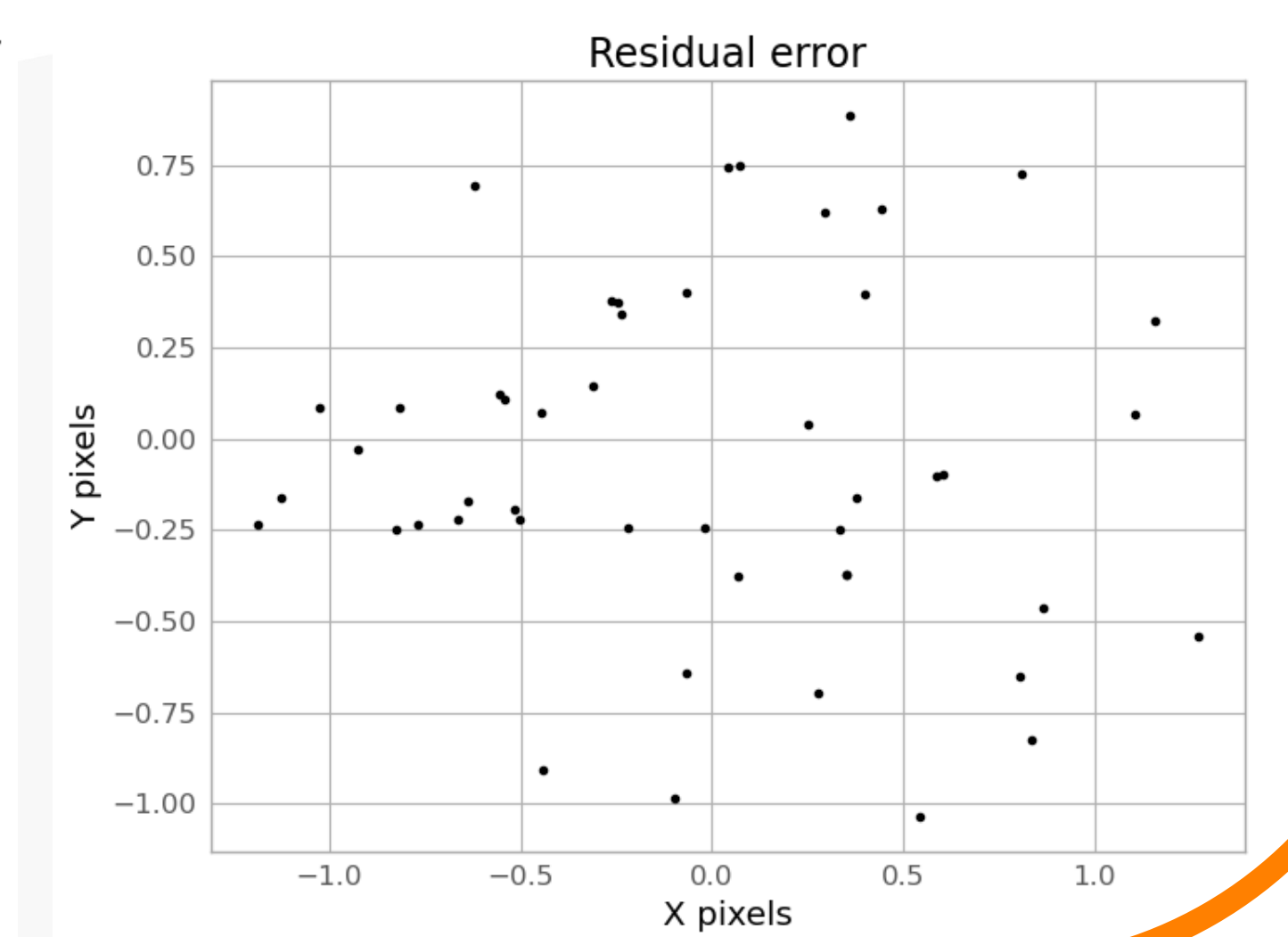
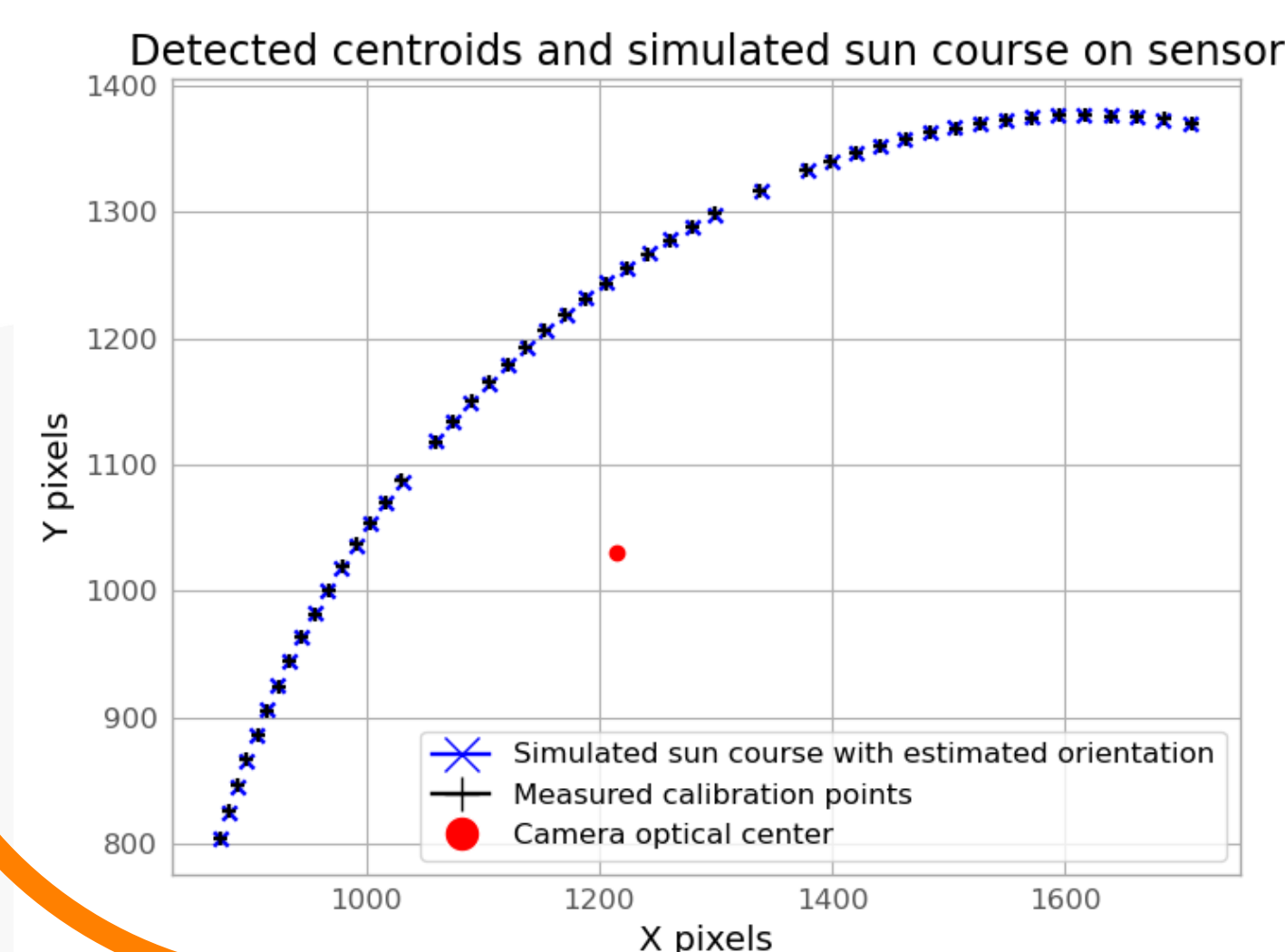
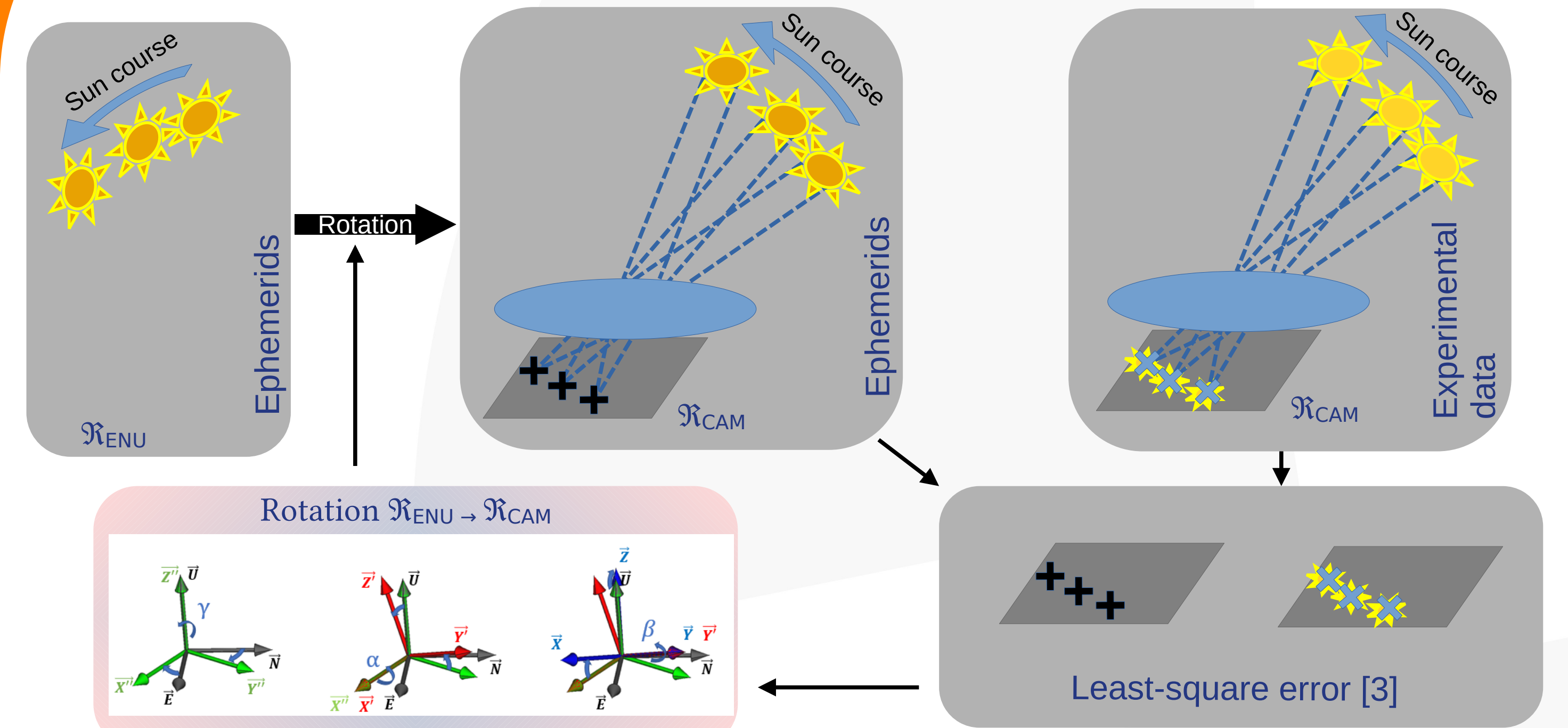
## Acquisition & Power Supply Case



The hardware architecture of the setup.

## Orientation calibration

→ **Camera frame** ( $\mathcal{R}_{CAM}$ ) orientation measured in respect to the local **East-North-Up** ( $\mathcal{R}_{ENU}$ ) **frame**. To do this, we chose to compare the **sun course** measured on the sensor with sun ephemeris provided by the Astropy Python package [4]

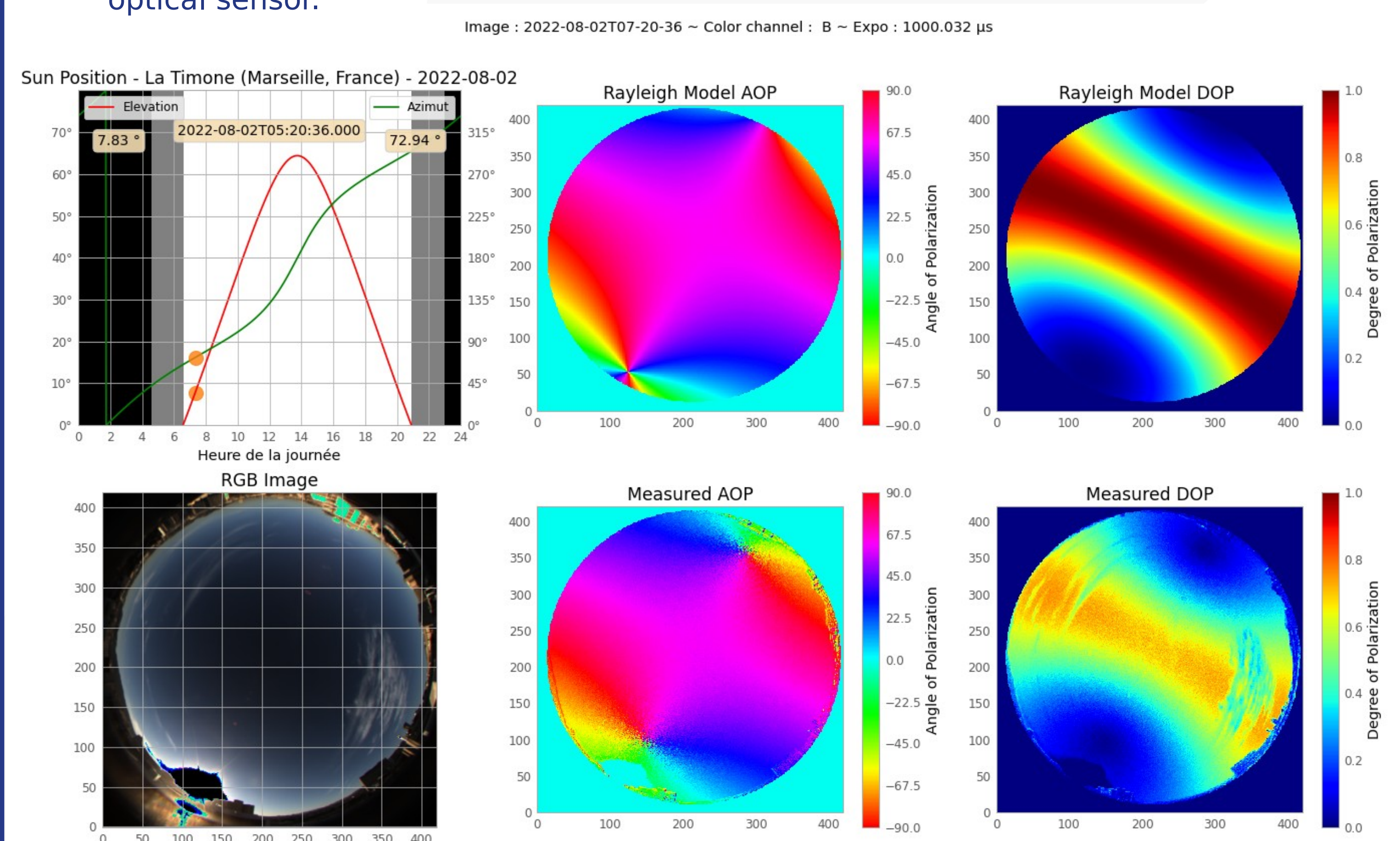


## Results

→ Several thousands of images were taken between 2022-07-29 and 2022-08-25.

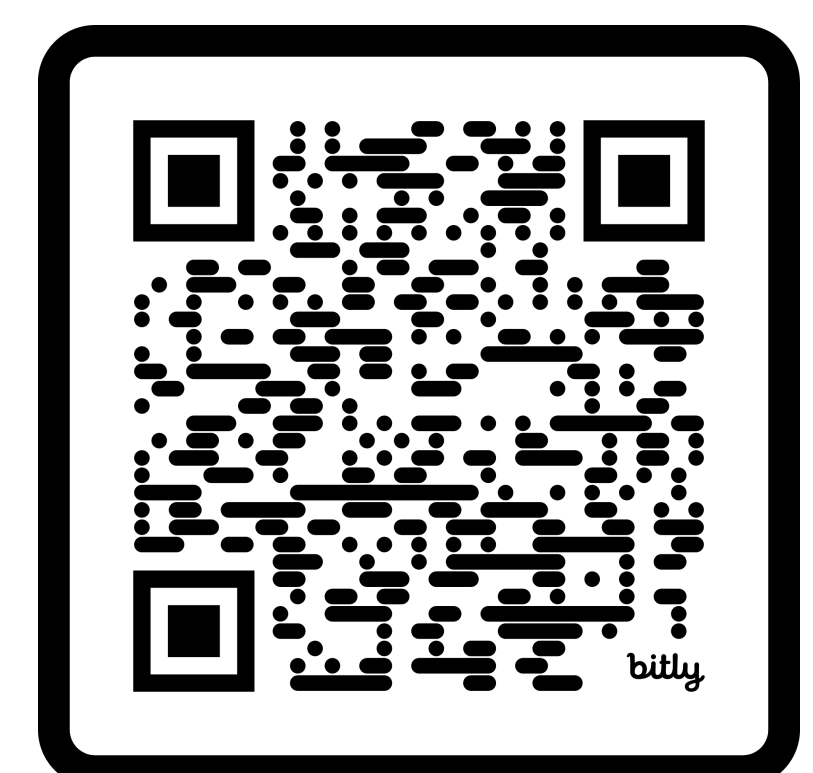
→ One image acquired every 10 minutes with several fixed and auto-adaptive exposure times. Camera orientation was assumed to be constant over time.

→ Comparison with Rayleigh model of sky simulated for similar time, location and optical sensor.



Dataset taken from a laboratory rooftop in Marseille, France (43.286990365824785°N, 5.403361407820939°E).

Database is available here: <https://doi.org/10.57745/610QTS>



- Stand-alone system based on a polarimetric camera for building a database of images.
- Open-source tool in Python to visualize and compare the real images with simulated images obtained with the Rayleigh model.
- Our database could be useful for testing and developing neural network-based and classical image processing, or to validate models of the polarized skylight patterns in various outdoor conditions.

[1] G. Horváth et D. Varjú, Polarized Light in Animal Vision. Berlin, Heidelberg: Springer Berlin Heidelberg, 2004. doi: 10.1007/978-3-662-09387-0.

[2] F. Kong, Y. Guo, J. Zhang, X. Fan, and X. Guo, Review on bio-inspired polarized skylight navigation. Chinese Journal of Aeronautics, 2023

[3] Newville, Matthew et al. LMFIT: Non-Linear Least-Square Minimization and Curve-Fitting for Python, 2014

This work made use of Astropy (<http://www.astropy.org>), a community-developed core Python package and an ecosystem of tools and resources for astronomy

\* This research was supported by the Openlab "Automotive MotionLab" part of the StellLab network.