



**HAL**  
open science

## Impact of the COVID-19 pandemic on clinical presentation, treatments, and outcomes of new breast cancer patients: A retrospective multicenter cohort study

Etienne Guével, Sonia Priou, Guillaume Lamé, Johanna Wassermann, Romain Bey, Catherine Uzan, Gilles Chatellier, Yazid Belkacemi, Xavier Tannier, Sophie Guillerm, et al.

### ► To cite this version:

Etienne Guével, Sonia Priou, Guillaume Lamé, Johanna Wassermann, Romain Bey, et al.. Impact of the COVID-19 pandemic on clinical presentation, treatments, and outcomes of new breast cancer patients: A retrospective multicenter cohort study. *Cancer Medicine*, 2023, 12 (22), pp.20918-20929. 10.1002/cam4.6637 . hal-04267498

**HAL Id: hal-04267498**

<https://hal.science/hal-04267498v1>

Submitted on 1 Nov 2023

**HAL** is a multi-disciplinary open access archive for the deposit and dissemination of scientific research documents, whether they are published or not. The documents may come from teaching and research institutions in France or abroad, or from public or private research centers.


L'archive ouverte pluridisciplinaire **HAL**, est destinée au dépôt et à la diffusion de documents scientifiques de niveau recherche, publiés ou non, émanant des établissements d'enseignement et de recherche français ou étrangers, des laboratoires publics ou privés.



Distributed under a Creative Commons Attribution 4.0 International License

## RESEARCH ARTICLE

# Impact of the COVID-19 pandemic on clinical presentation, treatments, and outcomes of new breast cancer patients: A retrospective multicenter cohort study

Etienne Guével<sup>1</sup> | Sonia Priou<sup>1,2</sup> | Guillaume Lamé<sup>2</sup>  | Johanna Wassermann<sup>3,4</sup> | Romain Bey<sup>1</sup> | Catherine Uzan<sup>4,5</sup>  | Gilles Chatellier<sup>6</sup> | Yazid Belkacemi<sup>7</sup> | Xavier Tannier<sup>8</sup> | Sophie Guillerm<sup>9</sup> | Rémi Flicoteaux<sup>10</sup> | Joseph Gligorov<sup>4,11</sup>  | Ariel Cohen<sup>1</sup>  | Marc-Antoine Bendersa<sup>4,11</sup>  | Luis Teixeira<sup>12</sup> | Christel Daniel<sup>1,8</sup> | Barbara Hersant<sup>13</sup> | Christophe Tournigand<sup>14</sup> | Emmanuelle Kempf<sup>8,14</sup> 

on behalf of the Assistance Publique–Hôpitaux de Paris (AP-HP) Cancer Group, a Cancer Research Application on Big Data (CRAB) initiative

<sup>1</sup>Assistance Publique–Hôpitaux de Paris, Innovation and Data, IT Department, Paris, France

<sup>2</sup>CentraleSupélec, Laboratoire Génie Industriel, Université Paris-Saclay, Gif-sur-Yvette, France

<sup>3</sup>Assistance Publique–Hôpitaux de Paris, Department of medical oncology, Pitié Salpêtrière University Hospital, Sorbonne Université, Paris, France

<sup>4</sup>Assistance Publique–Hôpitaux de Paris, Institut Universitaire de cancérologie, Sorbonne Université, Paris, France

<sup>5</sup>Assistance Publique–Hôpitaux de Paris, Department of gynecology, Pitié Salpêtrière University Hospital, Sorbonne Université, Paris, France

<sup>6</sup>Department of medical informatics, Assistance Publique Hôpitaux de Paris, Centre-Université de Paris (APHP-CUP), Université Paris Cité, Paris, France

<sup>7</sup>Assistance Publique–Hôpitaux de Paris, Department of Radiation Oncology and Henri Mondor Breast Center, Henri Mondor and Albert Chenevier University Hospital, Université Paris Est Créteil, Créteil, France

<sup>8</sup>Sorbonne University Inserm, Université Sorbonne Paris Nord, Laboratoire d'Informatique Médicale et d'Ingénierie des Connaissances pour la e-Santé, LIMICS, Paris, France

<sup>9</sup>Assistance Publique–Hôpitaux de Paris, Department of radiation therapy, Saint Louis University Hospital, Université Paris Cité, Créteil, France

<sup>10</sup>Assistance Publique–Hôpitaux de Paris, Department of medical information, Paris, France

<sup>11</sup>Assistance Publique–Hôpitaux de Paris, Department of medical oncology, Tenon University Hospital, Sorbonne Université, Paris, France

<sup>12</sup>Assistance Publique–Hôpitaux de Paris, Department of senology, Saint Louis Teaching Hospital, Université Paris Cité, Paris, France

<sup>13</sup>Assistance Publique – Hôpitaux de Paris, Department of plastic surgery, Henri Mondor and Albert Chenevier University Hospital, Université Paris Est Créteil, Créteil, France

<sup>14</sup>Assistance Publique – Hôpitaux de Paris, Department of medical oncology, Henri Mondor and Albert Chenevier University Hospital, Université Paris Est Créteil, Créteil, France

## Correspondence

Emmanuelle Kempf, Department of medical oncology, Henri Mondor and Albert Chenevier Teaching Hospital, Assistance Publique–Hôpitaux de Paris, 1 rue Gustave Eiffel, 94000 Créteil, France.  
Email: [emmanuelle.kempf@aphp.fr](mailto:emmanuelle.kempf@aphp.fr)

## Abstract

**Background:** The SARS CoV-2 pandemic disrupted healthcare systems. We compared the cancer stage for new breast cancers (BCs) before and during the pandemic.

Etienne Guével, Sonia Priou, and Emmanuelle Kempf have equally contributed to this article.

This is an open access article under the terms of the [Creative Commons Attribution](https://creativecommons.org/licenses/by/4.0/) License, which permits use, distribution and reproduction in any medium, provided the original work is properly cited.

© 2023 The Authors. *Cancer Medicine* published by John Wiley & Sons Ltd.

**Funding information**

Fondation ARC pour la Recherche sur le Cancer, Grant/Award Number: COVID202001343

**Methods:** We performed a retrospective multicenter cohort study on the data warehouse of Greater Paris University Hospitals (AP-HP). We identified all female patients newly referred with a BC in 2019 and 2020. We assessed the timeline of their care trajectories, initial tumor stage, and treatment received: BC resection, exclusive systemic therapy, exclusive radiation therapy, or exclusive best supportive care (BSC). We calculated patients' 1-year overall survival (OS) and compared indicators in 2019 and 2020.

**Results:** In 2019 and 2020, 2055 and 1988, new BC patients underwent cancer treatment, and during the two lockdowns, the BC diagnoses varied by  $-18\%$  and by  $+23\%$  compared to 2019. De novo metastatic tumors ( $15\%$  and  $15\%$ ,  $p=0.95$ ), pTNM and ypTNM distributions of 1332 cases with upfront resection and of 296 cases with neoadjuvant therapy did not differ ( $p=0.37$ ,  $p=0.3$ ). The median times from first multidisciplinary meeting and from diagnosis to treatment of 19 days (interquartile 11–39 days) and 35 days (interquartile 22–65 days) did not differ. Access to plastic surgery ( $15\%$  and  $17\%$ ,  $p=0.08$ ) and to treatment categories did not vary: tumor resection ( $73\%$  and  $72\%$ ), exclusive systemic therapy ( $13\%$  and  $14\%$ ), exclusive radiation therapy ( $9\%$  and  $9\%$ ), exclusive BSC ( $5\%$  and  $5\%$ ) ( $p=0.8$ ). Among resected patients, the neoadjuvant therapy rate was lower in 2019 ( $16\%$ ) versus 2020 ( $20\%$ ) ( $p=0.02$ ). One-year OS rates were  $99.3\%$  versus  $98.9\%$  (HR = 0.96; 95% CI, 0.77–1.2),  $72.6\%$  versus  $76.6\%$  (HR = 1.28; 95% CI, 0.95–1.72),  $96.6\%$  versus  $97.8\%$  (HR = 1.09; 95% CI, 0.61–1.94), and  $15.5\%$  versus  $15.1\%$  (HR = 0.99; 95% CI, 0.72–1.37), in the treatment groups.

**Conclusions:** Despite a decrease in the number of new BCs, there was no tumor stage shift, and OS did not vary.

**KEYWORDS**

COVID-19, breast neoplasms, early detection of cancer, health services research, quality of health care, routinely collected health data

## 1 | INTRODUCTION

At the start of the European SARS CoV-2 pandemic in 2020, most healthcare systems were heavily impacted. Governments and public health authorities implemented national lockdowns and social distancing policies to reduce contamination. These disruptions may have affected the care trajectories of cancer patients across the world.<sup>1</sup> Indeed, the number of newly referred solid cancer patients dropped during the first waves of the pandemic, and it is not clear whether this drop in diagnoses was compensated later.<sup>2</sup> In the specific case of breast cancer (BC), which accounts for more than 30% of female cancers, national BC screening programs were interrupted in many countries at some point in 2020.<sup>3</sup> A meta-analysis showed that the number of patients screened for BC dropped by 40% at the beginning of the pandemic compared to the pre-pandemic period, a result confirmed by other systematic reviews.<sup>4–6</sup> Recent nationwide studies showed that national BC

screening programs may have reached back to pre-pandemic levels in the United Kingdom, but not in the United States.<sup>7,8</sup> As a result of these disruptions, modelers have anticipated a worldwide increase in BC mortality by 2030 because of delays in diagnosis and treatment.<sup>9,10</sup> However, real-world evaluations of the impact of the outbreak on care trajectories and outcomes of new BC cases remain scarce, include a low number of patients, and/or lack mid-term follow-up of patients' clinical outcomes.<sup>10–15</sup>

In France, national guidelines recommended to postpone BC screening and reconstruction surgeries during the initial outbreak, and to prioritize surgical and radiation therapies according to the severity of BC cases.<sup>16,17</sup> The National Cancer Institute reported a drop of 10% in the annual number of mammograms ( $-492,500$  procedures) and a  $1.4\%$ – $1.7\%$  drop in BC surgery between 2019 and 2020.<sup>18,19</sup> At a regional level, the impact of the pandemic on initial tumor stages and care pathways varied. In Burgundy, the authors reported no impact on BC

initial presentation or times to anticancer treatment in 2020 compared to 2019.<sup>20</sup> In South West France, investigators reported less new BC cases, diagnosed with larger tumors.<sup>21</sup> In Paris region, a comprehensive cancer center reported no impact of the pandemic on clinical presentation or time to treatment, despite a 42% decrease in the number of initial visits for recently diagnosed BC during the first national lockdown (March–May 2020).<sup>22</sup>

The aim of this study was to assess the impact of the SARS CoV-2 pandemic on tumor stage at diagnosis, anticancer upfront treatments, and 1-year overall survival (OS) of newly referred BC cases, in the Greater Paris area, before, during, and after the outbreak of the SARS CoV-2 pandemic in early 2020.

## 2 | METHODS

We performed a retrospective multicenter cohort study on the Clinical Data Warehouse (CDW) of Greater Paris University Hospitals (Assistance Publique–Hôpitaux de Paris, AP-HP), following the REporting of studies Conducted using Observational Routinely-collected Data (RECORD) extension of the Strengthening the Reporting of Observational studies in Epidemiology (STROBE) guidelines.<sup>26,2</sup> AP-HP's CDW was initiated in 2015 to help monitor the quality of care and to promote secondary use of electronic health records (EHR) for research. It contains routinely collected data for 11.4 million patients from 2015 onwards,<sup>23</sup> covering 39 teaching hospitals in Paris area. The data include patient demographics, claims data, vital status, lab and imaging results, images, and clinical notes.<sup>24</sup> During the SARS CoV-2 pandemic, AP-HP's CDW adapted its procedures to support managers, researchers, and caregivers efficiently.<sup>25</sup>

We identified patients and care events using the CDW's claims database, which contains two types of structured data: diagnoses, based on the International Classification of Diseases (ICD, 10th edition), and medical procedures, based on the French Common Classification of Medical Procedures (CCAM, 11th edition). We identified female patients newly referred between January 1, 2019, and December 31, 2020, to one of the 28 AP-HP teaching hospitals for which clinical data was available since January 2017. We included patients with (1) an ICD-10 code C50 or D05 (principal or related diagnosis), not previously registered in the previous 18 months, and (2) no other primary cancer code. We considered that patients had received their BC diagnosis at AP-HP if one of the CCAM codes related to breast biopsy was present (Table S1). Male patients were excluded from the study.

For the analysis of treatment strategies, we classified patients into four mutually exclusive categories: BC

surgery (regardless of any perioperative cancer treatment, using CCAM codes in Table S1), exclusive parenteral systemic anticancer therapy (chemotherapy ICD-10 Z511, regardless of radiation therapy), exclusive radiation therapy (no chemotherapy, no BC surgery), and exclusive best supportive care (BSC) (ICD-10 Z515 with no BC anticancer treatment). Patients with no treatment code at AP-HP were excluded from this analysis. We calculated the 3-month moving average (average of the month of interest with the previous and following months) of treatment distribution, within the 18 months after the first BC diagnosis code. We compared the proportions of patients who received neo-adjuvant chemoradiation therapy (ICD-10 code Z5101) or systemic neo-adjuvant chemotherapy (ICD-10 Z511) in 2019 and 2020. We defined elderly patients as those over the age of 70. We compared the rate of BC surgery for these patients during the lockdown periods (March 17–May 11, 2020, October 30–December 15, 2020) to the rates before and after those lockdowns.

We assessed the time between a patient's first multidisciplinary team meeting (MDM) and the start of their BC treatment (the date of BC diagnosis was not exploitable because most BC screening and diagnostic procedures are performed outside the AP-HP teaching hospitals). We obtained the date of MDM from the structured metadata attached to each MDM report, and we identified the treatment date using claims data. Two separate analyses were conducted depending on which event happened first. For patients who had cancer diagnosis performed in one of AP-HP's hospitals, we also calculated the median delay between the issue of the pretreatment pathology report and the date of the first treatment.

We used rule-based natural language processing algorithms to identify the initial tumor stage using (1) baseline PET/CT-scan and CT-scan reports (i.e., those coded between 90 days before and 45 days after the diagnosis date) and (2) the first postoperative pathology report for resected tumors (details on the development and validation of these algorithms are provided in the Data S1).<sup>27</sup> The metastatic tumor stage was identified in the conclusion sections of baseline PET/CT-scan and CT-scan reports. We classified resected tumors by ypTNM and pTNM stage (8th WHO TNM classification) according to the risk of relapse, with low- and high-risk defined as (y)pTxN0 and (y)pTxN1-2, respectively. The “p” in pTNM/ypTNM denotes that the stage was established based on a pathology report, and the “y” in ypTNM indicates that the patient received neoadjuvant treatment.<sup>28</sup>

We analyzed BC patients' OS using daily deaths data obtained by the routine chaining of AP-HP's CDW and the National Death Registry (NDR) supervised by the French National Institute of Statistics and Economic Studies (INSEE). A patient's OS was defined as the time between

the first occurrence of an ICD-10BC code and the date of the patient's death. Living patients were censored at the date of the last NDR update in AP-HP's CDW (June 2022). We plotted survival curves plotted using the Kaplan–Meier method. We compared the OS of BC patients referred in 2019 and 2020 (overall, per age class, and per anticancer treatment category). To do so, we estimated hazard ratios (HRs) and their 95% confidence intervals (CIs) through a Cox time-varying proportional hazard model, with age as a constant covariate and SARS CoV-2 infection as a time-varying covariate. We identified SARS CoV-2 infections by looking for PCR results, positive serologic tests, or the presence of one of the U071 ICD-10 codes on the year following the date of the BC diagnosis.

We used the chi-squared test to compare categorical variables and Mann–Whitney's *U* test for quantitative variables. Final data extraction was performed on December 5, 2022. Statistical significance was set at  $p < 0.05$ . All calculations were performed using Python release 3.7 ([www.python.org](http://www.python.org)).

The French Data Protection Agency (CNIL, Commission Nationale de l'Informatique et des Libertés) authorized the constitution of AP-HP's CDW on January 19, 2017 (approval no. 19800120). In a single commitment to the CNIL, AP-HP declared that its CDW complied with the French national reference methodology MR-004 for processing personal data for the purposes of research of public interest nature and that does not involve the human person, which includes research reusing existing data. The study reported in this article was approved by AP-HP's Scientific and Ethics Committee (IRB00011591) (approval CSE 20-0055\_COVONCO-AP) on May 15, 2020. This study conforms to the Declaration of Helsinki standards. French regulations do not require written patient consent for this type of research. In accordance with the European General Data Protection Regulation, patients were informed and those who objected to the secondary use of their data for research were excluded from the study.

### 3 | RESULTS

#### 3.1 | Patients' characteristics (Table 1)

Two thousand three hundred and three female patients were newly referred to AP-HP with a BC diagnosis in 2019, and 2258 in 2020. Patients' median age was 60.5 (interquartile range (IQR): 49.9–71.5) in 2019 and 61.0 (IQR: 49.8–71.9) in 2020 ( $p = 0.62$ ). The number of newly referred BC patients decreased by 18% during the first national lockdown (March–May 2020) and increased by 23% during the second one (October–November 2020) compared to the same periods in 2019 (Figure 1). The number of newly referred elderly patients changed by the same proportions, and we did not find a correlation between the number of newly referred patients and patients' age (Table S2 and Figure S1).

#### 3.2 | Anticancer treatment strategies

Two thousand and fifty-five patients received BC treatment in 2019 and 1988 in 2020, respectively (Table 1). One thousand four hundred and ninety-nine (73%) underwent BC resection in 2019, versus 1425 (72%) in 2020. Two hundred and sixty-eight patients (13%) had exclusive systemic anticancer therapy in 2019, versus 276 (14%) in 2020. One hundred and seventy-seven patients (9%) had exclusive radiation treatment in 2019, and 180 (9%) in 2020. Finally, 111 patients (5%) had exclusive BSC in 2019, versus 107 (5%) in 2020. There was no difference in the distribution of patients between treatment categories either overall ( $p = 0.81$ ) or by age categories (Table S3 and Figure S2) ( $p = 0.95$ ).

Among the patients who underwent BC resection, 133 (9%) had a subsequent BC resection in 2019 compared to 141 (10%) in 2020 ( $p = 0.38$ ), 245 (16%) underwent neoadjuvant anticancer treatment in 2019 compared to 283

TABLE 1 Characteristics of the study population.

	2019	2020
Number of newly referred female BC patients who underwent anticancer treatment at AP-HP	2055	1988
Patients age median (IQR)	60.5 (49.9–71.5)	61.0 (49.8–71.9)
Anticancer treatment strategy		
• BC resection–no (%)	1499 (72.9)	1425 (71.7)
• Exclusive systemic treatment–no (%)	268 (13.0)	276 (13.9)
• Radiation therapy–no (%)	177 (8.6)	180 (9.1)
• Exclusive best supportive care–no (%)	111 (5.4)	107 (5.4)
Number of hospital SARS CoV-2 infection diagnoses	22	104

Abbreviations: AP-HP, Greater Paris Teaching Hospital (Assistance Publique–Hôpitaux de Paris); BC, breast cancer; interquartile, IQR, interquartile range.

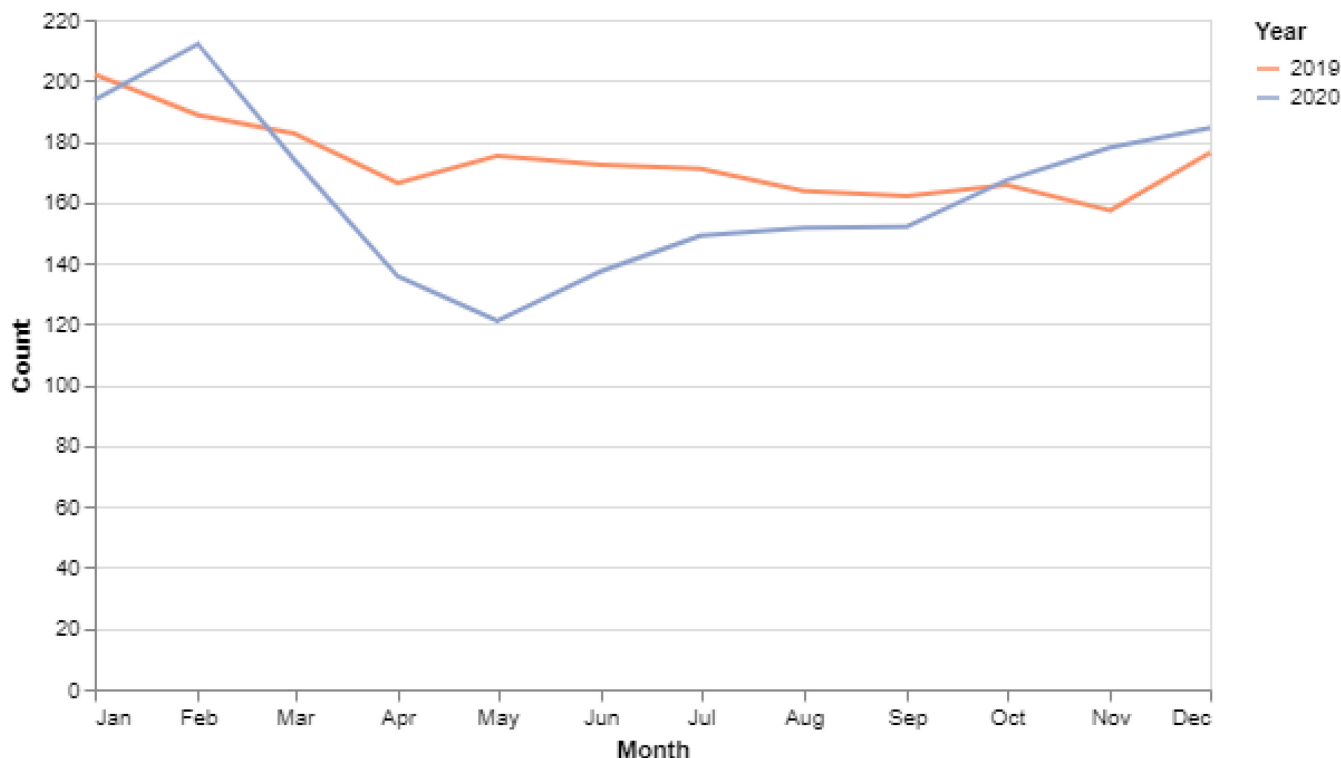


FIGURE 1 Monthly (3-month moving average) number of breast cancer cases newly referred to Assistance Publique–Hôpitaux de Paris (AP-HP) hospitals between January 2019 and December 2020.

(20%) in 2020 ( $p=0.02$ ), 402 (27%) underwent adjuvant chemotherapy in 2019 compared to 355 (25%) in 2020 ( $p=0.26$ ), and 651 (43%) underwent adjuvant radiation therapy in 2019 compared to 686 (48%) in 2020 ( $p=0.01$ ) (Tables S4 and S5). In the 50–70 years age group, 108 (15%) patients underwent neoadjuvant treatment in 2019, compared to 137 (21%) in 2020 ( $p=0.01$ ) (Table S4). There was no significant difference in the age distribution of patients who underwent resection ( $p=0.65$ ) (Table S4). Two hundred and twenty-four (15%) patients had reconstructive breast plastic surgery in 2019, compared to 248 (17%) in 2020 ( $p=0.08$ ). Among patients who underwent total mastectomy, 65/522 (13%) had immediate breast reconstruction in 2019, compared to 93/489 (19%) in 2020, with a rate of breast prosthesis placement reaching 43% and 53% ( $p=0.30$ ), respectively. Among patients who underwent BC resection, 77 (4%) and 73 (4%) had oncoplastic surgery (of which 58 and 60 occurred during the BC resection) in 2019 and in 2020, respectively ( $p=0.41$ ).

### 3.3 | Care pathways

Among the 4043 patients with any type of anticancer treatment at AP-HP in 2019 and 2020, 2071 (50%) had a cancer diagnosis performed in AP-HP teaching hospitals, with a median delay of 35 days (IQR 22–65) between the

pre-treatment pathology report and the initiation of the first treatment. The proportion of patients with a pre-treatment pathology report and the delay between the report and the initiation of treatment did not vary over time (Figures S3 and S4). Three thousand and forty-one of the 3831 patients who underwent active anticancer treatment (79%) had an MDM report available. The median time between the first MDM and the first therapeutic procedure was stable at 19 days (IQR 11–39 days) in 2019 and 2020, including during the lockdown periods.

### 3.4 | Initial tumor stage

Among the 2924 patients who underwent BC resection, 2762 (94%) had available pathology reports following BC resection. One thousand six hundred and twenty-eight (59%) of these reports mentioned a (y)pTNM score. In the 1332 patients with upfront BC resection and available data, the repartition between the pTNM risk groups did not change over time: 168 (25%) and 148 (23%) for the high-risk category in 2019 and 2020, respectively ( $p=0.37$ ). Among the 296 patients with neo-adjuvant treatment, 55 (37%) were in the high-risk ypTNM category in 2019, and 67 (45%) in 2020 ( $p=0.31$ ). Among the 725 (17.9% of the overall population) patients with an available baseline PET-scan and/or a CT-scan report, the

proportion of metastatic cancers did not differ over time: 15% and 15% in 2019 and 2020, respectively (Figures S5–S8 and Tables S6 and S7).

### 3.5 | Clinical outcomes and overall survival

In the overall population, the 1-year OS rate did not differ between 2019 and 2020 when patients' age and the occurrence of a SARS CoV-2 infection were taken into consideration (92.3% vs. 92.1% [HR=1.0; 95% CI: 0.89–1.20]) (Figure 2A). The OS rate remained stable between 2019 and 2020 across all treatment categories: patients undergoing tumor resection (99.3% vs. 98.9% in 2019 and 2020, respectively [HR=1.0, 95% CI: 0.8–1.2]), exclusive systemic anticancer therapy (72.6% vs. 76.6% [HR=1.3, 95% CI: 1.0–1.7]), exclusive radiation therapy (96.6% vs. 97.8% [HR=1.09; 95% CI: 0.61–1.94]), or BSC (15.5% vs. 15.1% [HR=1.0; 95% CI, 0.7–1.4]) (Figure 2B). Older age was associated with a lower 1-year OS, both in the overall population and in individual treatment categories (Figure 2B).

### 3.6 | SARS CoV-2 infection

In 2020, 48 patients undergoing tumor resection had a proven SARS CoV-2 infection (3% of patients with BC resection that year), 33 (11%) of those with exclusive systemic anticancer therapy, 4 (2%) of those with exclusive radiation therapy, and 19 (17%) of those who received BSC. Patients with SARS CoV-2 infection had a significantly lower OS rates than patients without infection in the overall population (HR=5.3, [95% CI: 3.7–7.7]) (Figure 2B), and in patients with exclusive systemic anticancer therapy (HR=4.7 [95% CI: 2.9–7.6]), but not for patients undergoing tumor resection (HR=1.5 [95% CI: 0.7–3.4]), exclusive radiation therapy (HR=0.9 [95% CI: 0.1–12.0]) or BSC (HR=1.2 [95% CI: 0.7–2.1]) (Figure 2B).

## 4 | DISCUSSION

In this large multicenter cohort study using real-life data, we observed a significant decrease in the number of patients newly referred for BC to AP-HP hospitals during the first national SARS CoV-2 lockdown, with a subsequent catch-up. The timeline of initial hospital management, the distribution of tumor stages, the repartition of patients across treatment categories (including plastic surgery), and the 1-year OS rate did not differ significantly between 2019 and 2020. Older patients were represented in all subpopulations with no significant differences compared to

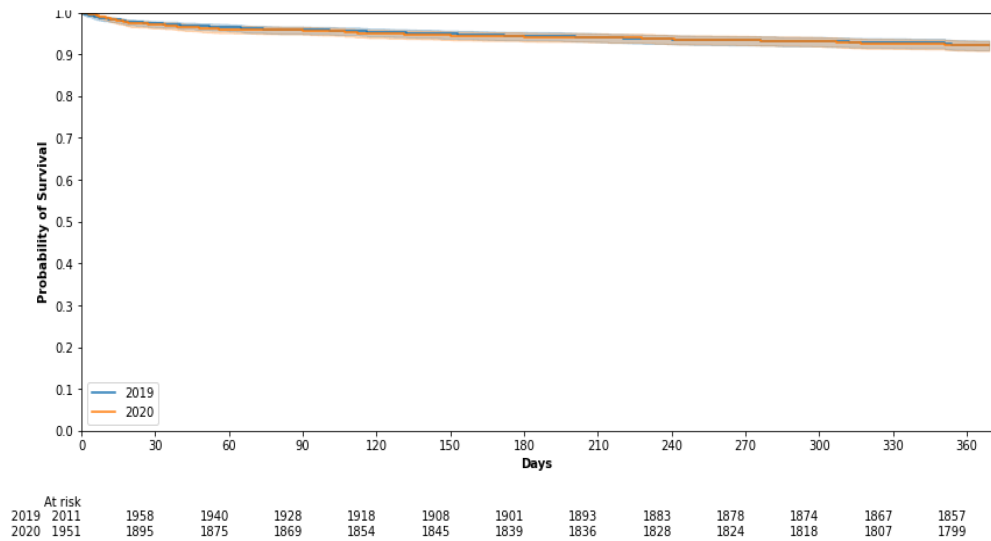
younger patients. However, older age was associated with poorer clinical outcomes, regardless of the occurrence of a SARS CoV-2 infection or the type of BC cancer treatment strategy.

Other international studies showed a decrease in the number of newly referred BC patients during the beginning of the pandemic, mostly due to the interruption of national programs of BC screening.<sup>4–6,29,30</sup> In France, the National Cancer Institute (Institut national du cancer, INCa) stopped the national BC screening program between March and June 2020, following scientific guidelines.<sup>17,31</sup> Yet, in this study, the overall number of new BC cases diagnosed in 2020 was not different from the 2019 figures, which indicates that patients not seen during the lockdown were seen later in the year. Moreover, the age distribution of patients was stable throughout the study period. In Paris area, dedicated BC screening programs were launched after the initial outbreak to catch up the potential BC diagnosis delays efficiently, according to national guidelines.<sup>32,33</sup> In England, the screening program resumed in July 2020 and a recent study showed figures consistent with ours. After a 9% decrease in 2020, as many new BC referrals were observed in 2021 as pre-pandemic, but with a larger proportion of “urgent referrals.”<sup>7</sup> A Spanish study showed that BC was over-diagnosed by 14% in 2020–2021 compared to the pre-pandemic period.<sup>34</sup> In other countries such as the US, the number of diagnoses has not yet recovered its pre-pandemic level.<sup>8</sup> An American study based on the 1,600,000 annual BC screening mammography performed between 2017 and 2022 showed that the rates of mammography performed between March 2020 and February 2021, and between March 2021 and April 2022, were 17% and 4% lower than expected, respectively.<sup>35</sup> This decrease in BC screenings may have exacerbated preexisting social disparities.<sup>36</sup>

Our study showed that hospital delays between diagnostic breast biopsies, first MDM, and first administration of cancer treatment did not vary over time. These results highlight that hospital BC patients were managed as usual during the initial waves of the pandemic, as other BC centers have reported in Italy.<sup>37</sup> This finding is at odds with the results of a quasi-experimental study performed in six European countries, which found that the median time-to-treatment for newly diagnosed BC patients in 2020 may have increased compared to the 2017–2019 period, with significant heterogeneity between countries.<sup>38</sup> Other studies reported comparable results, with a negative impact on patient-reported outcomes.<sup>39–42</sup>

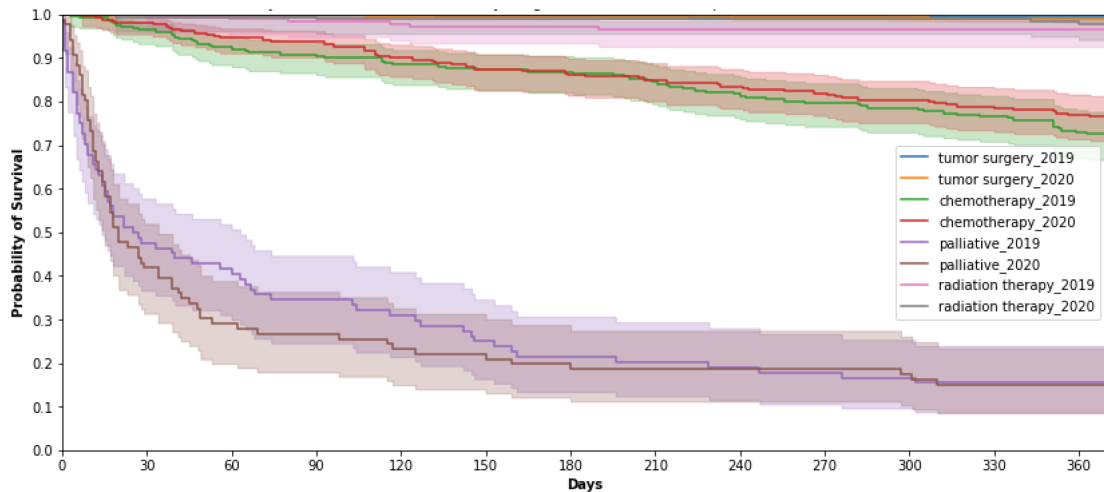
We observed no significant impairment in the initial clinical presentation or the anticancer therapeutic strategies during and after the SARS CoV-2 outbreak. This is also true for surgeries, despite pressures on anesthesia during the pandemic. Patients did not present with

(A)



Covariates	Covid	Age of the patient	Year of BC diagnosis
unHR (95% CI)	x	x	0.98 (0.79 - 1.23)
aHR (95% CI)	<b>5.35 (3.7-7.73)</b>	<b>1.02 (1.02-1.03)</b>	<b>1.03 (0.89-1.19)</b>

(B)



	At risk	2019	2011	1958	1940	1928	1918	1908	1901	1893	1883	1878	1874	1867	1857
tumor surgery_2019	1499	1499	1499	1497	1496	1495	1492	1492	1491	1491	1491	1491	1490	1489	
tumor surgery_2020	1425	1424	1424	1423	1421	1421	1420	1420	1416	1416	1416	1415	1411	1409	
chemotherapy_2019	252	243	232	228	223	220	219	213	205	201	198	193	184		
chemotherapy_2020	261	256	247	245	235	228	225	222	218	214	210	205	201		
palliative_2019	83	40	34	29	26	21	18	17	16	15	14	13	13		
palliative_2020	85	36	25	23	20	18	16	16	16	16	15	13	13		
radiation therapy_2019	177	176	175	174	173	172	172	171	171	171	171	171	171	171	
radiation therapy_2020	180	179	179	178	178	178	178	178	178	178	178	178	178	176	

Anticancer strategy	Chemotherapy	BSC	Radiation therapy	BC resection
unHR for the year of BC diagnosis (95% CI)	1.19 (0.85-1.68)	0.96 (0.69-1.33)	1.54 (0.43-5.45)	0.59 (0.27-1.31)
aHR for the year of BC diagnosis (95% CI)	<b>1.28 (0.95-1.72)</b>	<b>0.99 (0.72-1.37)</b>	<b>1.09 (0.61-1.94)</b>	<b>0.96 (0.77-1.19)</b>
Sars Cov-2 infection (95% CI)	<b>4.66 (2.85-7.63)</b>	<b>1.21 (0.7-2.1)</b>	<b>0.88 (0.06-12.2)</b>	<b>1.55 (0.7-3.4)</b>
Age of the patient (95% CI)	<b>1.01 (1.0-1.02)</b>	<b>1.0 (0.99-1.01)</b>	<b>1.02 (1.0-1.04)</b>	<b>1.01 (1.0-1.01)</b>

**FIGURE 2** One-year OS of newly referred breast cancer patients in (A) the overall population, and in patients who underwent (B) upfront tumor resection, exclusive anticancer systemic therapy, exclusive radiation therapy, or best supportive care in 2019 and 2020 in AP-HP teaching hospitals. aHR, adjusted hazard ratio; AP-HP, Assistance Publique–Hôpitaux de Paris; BC, breast cancer; BSC, best supportive care; CI, confidence interval; OS, overall survival; unHR, unadjusted H.



a higher tumor burden due to delays in BC diagnostic procedures or access to anticancer therapeutic strategies, independently from their age. In the patient group aged from 50 to 70 years, the administration of neoadjuvant chemotherapy may have increased in 2020 compared to 2019. Yet, there were no differences in ypTNM and pTNM in 2020 compared to 2019 for patients with neoadjuvant chemotherapy and upfront BC resection, respectively. This increase in neoadjuvant chemotherapy in 2020 may be due to logistic care pathway issues rather than to delays in BC diagnoses or to more advanced tumors at initial presentation.<sup>43</sup> Modified strategies for localized BC care were observed in other developed countries during the outbreak. This approach may have helped to maintain the time-to-first-treatment stable and comparable to the pre-pandemic level during the outbreak.<sup>44</sup>

Our results are at odds with other studies that found a shift in initial tumor staging in new BC cases following the pandemic. A Japanese study found increased rates of stage IIB or more after the pandemic outbreak compared to 2019.<sup>10</sup> An English study on 439 patients showed more advanced BCs at initial presentation, with higher rates of node-positive and metastatic stages in 2020 compared to 2019.<sup>45</sup> Other studies in the US, South America, Europe, the Middle East, and Asia, obtained similar results.<sup>12-14,30,43,46-49</sup> Studies showing no tumor shift, as displayed in the presented results, are scarce,<sup>11,15</sup> but may also have been underreported. Our study showed no difference in terms of frequency and modalities of breast reconstruction surgery in 2020 compared to 2019, unlike other studies that found less breast reconstruction surgeries post-pandemic, in consistence with scientific recommendations.<sup>15,50-53</sup>

After adjustment on patients' age and occurrence of a SARS CoV-2 infection, the mortality rate of patients in this study patients was not different in 2020, compared to 2019, across treatment categories. Older age was an independent negative prognostic factor, regardless of the therapeutic strategy.<sup>54</sup> As expected, the occurrence of a SARS CoV-2 infection was associated with a fourfold increase in mortality risk in patients treated with exclusive chemotherapy.<sup>55</sup>

Among the study strengths, we report one of the largest published cohorts of newly referred BC patients with one-year clinical outcomes, in an area severely hit by the SARS CoV-2 outbreak. Our analysis relies on extensive analysis of EHR data, from which we assessed their care management, initial clinical presentation, and 1-year clinical outcomes. We identified BC cases and therapeutic strategies based on hospital claims. Cancer registries remain the gold standard for such analyses, but studies have concluded that French claims databases are reliable for our scientific purpose.<sup>56</sup> Among the study limits, our

results are limited to one regional healthcare provider, despite the size of the database we investigated (11 million patient records). This generates limitations. For example, only 9% of BC patients in our study received exclusive radiation therapy. Their OS rate suggests that at least some of them had BC resection elsewhere, highlighting the fact that we did not have access to data on patient care outside of this provider, such as most of BC diagnostic biopsies and initial screening mammograms. Even in our database, data availability was an issue for some items, for example, for TNM scores. In parallel, the outbreak may have modified hospital recruitment patterns, biasing comparisons between 2019 and 2020. The natural language processing algorithms we used to identify tumor stages from EHRs may lack classification precision. Finally, the occurrence of SARS CoV-2 infection may have been underestimated as the use of diagnostic tests was not systematic at the beginning of the outbreak.

## 5 | CONCLUSION

Despite a significant decrease in the number of patients newly referred for a BC during the first pandemic wave, the tumor stages, the initial hospital delays of care management, the distribution across therapeutic strategy categories, and the 1-year OS rate did not vary significantly between 2019 and 2020. Prognostic factors such as the occurrence of a SARS CoV-2 infection during chemotherapy course or older age were confirmed. Larger population-based studies with longer follow-up will be necessary to assess the long-term impact of the SARS CoV-2 outbreak on newly referred BC patients.

## AUTHOR CONTRIBUTIONS

**Etienne Guével:** Data curation (lead); formal analysis (supporting); methodology (supporting); software (equal); validation (lead); visualization (lead); writing – review and editing (supporting). **Sonia Priou:** Conceptualization (lead); data curation (lead); formal analysis (lead); investigation (equal); methodology (lead); software (lead); validation (lead); visualization (equal); writing – review and editing (lead). **Guillaume Lamé:** Conceptualization (lead); data curation (supporting); formal analysis (lead); funding acquisition (lead); investigation (lead); methodology (lead); project administration (supporting); resources (supporting); supervision (lead); validation (lead); visualization (lead); writing – original draft (lead); writing – review and editing (lead). **Johanna Wassermann:** Investigation (equal); validation (equal); writing – review and editing (lead). **Romain Bey:** Conceptualization (supporting); data curation (supporting); funding acquisition (supporting); investigation (equal); methodology

(supporting); project administration (supporting); resources (supporting); software (supporting); supervision (supporting); visualization (supporting); writing – review and editing (supporting). **Catherine Uzan:** Formal analysis (supporting); resources (supporting); validation (supporting); writing – review and editing (supporting). **Gilles Chatellier:** Conceptualization (lead); data curation (supporting); formal analysis (lead); investigation (lead); methodology (lead); supervision (lead); validation (lead); visualization (lead); writing – original draft (supporting); writing – review and editing (lead). **Yazid Belkacemi:** Formal analysis (equal); investigation (equal); methodology (equal); resources (equal); validation (equal); writing – review and editing (lead). **Xavier Tannier:** Conceptualization (lead); data curation (supporting); formal analysis (lead); investigation (lead); methodology (lead); resources (equal); software (lead); supervision (lead); validation (lead); visualization (equal); writing – original draft (supporting); writing – review and editing (lead). **Sophie Guillerm:** Formal analysis (equal); investigation (equal); methodology (equal); resources (equal); validation (lead); writing – review and editing (lead). **Rémi Flicoteaux:** Conceptualization (supporting); data curation (equal); formal analysis (supporting); investigation (equal); methodology (equal); supervision (equal); validation (lead); visualization (equal); writing – original draft (supporting); writing – review and editing (lead). **Joseph Gligorov:** Conceptualization (equal); formal analysis (equal); investigation (equal); methodology (equal); resources (equal); supervision (equal); validation (lead); writing – original draft (supporting); writing – review and editing (lead). **Ariel Cohen:** Data curation (lead); formal analysis (lead); investigation (lead); methodology (lead); resources (supporting); software (lead); validation (lead); visualization (lead); writing – original draft (supporting); writing – review and editing (lead). **Marc-Antoine Benderra:** Formal analysis (equal); investigation (equal); methodology (equal); resources (equal); validation (equal); writing – original draft (supporting); writing – review and editing (lead). **Luis Teixeira:** Investigation (equal); methodology (equal); resources (equal); validation (equal); writing – review and editing (lead). **Christel Daniel:** Conceptualization (equal); data curation (equal); formal analysis (equal); funding acquisition (equal); investigation (equal); methodology (equal); project administration (lead); resources (lead); software (lead); supervision (supporting); validation (equal); visualization (equal); writing – review and editing (lead). **Barbara Hersant:** Conceptualization (lead); formal analysis (equal); investigation (equal); methodology (equal); supervision (equal); validation (equal); writing – review and editing (lead). **Christophe Tournigand:** Conceptualization (equal); formal analysis

(equal); funding acquisition (lead); investigation (lead); methodology (equal); project administration (lead); resources (lead); supervision (lead); validation (supporting); writing – original draft (supporting); writing – review and editing (lead). **Emmanuelle Kempf:** Conceptualization (lead); data curation (lead); formal analysis (lead); funding acquisition (lead); investigation (lead); methodology (lead); project administration (lead); resources (lead); software (supporting); supervision (lead); validation (lead); visualization (lead); writing – original draft (lead); writing – review and editing (lead).

## ACKNOWLEDGMENTS

We thank Mrs. Patricia Serre, Mrs. Cécile Poret, Mr. Bastien Rance, Mr. Thomas Petitjean, Mr. Alexandre Mouchet and Mr. Stéphane Bréant for their help in the data access, quality assessment and analysis. Data used in preparation of this article were obtained from the AP-HP Covid CDW Initiative database. A complete listing of the members can be found at: (<https://eds.aphp.fr/covid-19>). This research was supported by the teams in charge of the Clinical Data Warehouse of Greater Paris University Hospitals (AP-HP).

## FUNDING INFORMATION

This research was supported by a grant from the AP-HP foundation and by a grant from ARC Foundation for cancer research (grant reference COVID202001343).

## CONFLICT OF INTEREST STATEMENT

The authors have no conflict of interest to disclose.

## DATA AVAILABILITY STATEMENT

The data and the code that support the findings of this study are available on request from the corresponding author. The process to access the raw data of the clinical data warehouse is described on its website [eds.aphp.fr](https://eds.aphp.fr).

## ETHICS STATEMENT

The French Data Protection Agency (CNIL, Commission Nationale de l'Informatique et des Libertés) authorized the constitution of the AP-HP Clinical Data Warehouse (CDW) on January 19, 2017 (approval no. 19800120). In a single commitment to the CNIL, AP-HP declared complying with the French national reference methodology MR-004 (<https://www.legifrance.gouv.fr/jorf/id/JORFT-EXT000037187498>) governing the processing of personal data for the purposes of research of a public interest nature that does not involve the human person, in particular research reusing previously registered data. Finally, the present research was approved by the AP-HP Scientific and Ethics Committee (IRB00011591) (approval CSE 20-0055\_COVONCO-AP) on May 15, 2020. This study conforms to

the Declaration of Helsinki standards. French regulations do not require written patient consent for this type of research. In accordance with the European General Data Protection Regulation, patients were informed and those who objected to the secondary use of their data for research were excluded from the study.


## ORCID

Guillaume Lamé  <https://orcid.org/0000-0001-9514-1890>

Catherine Uzan  <https://orcid.org/0000-0003-3972-819X>

Joseph Gligorov  <https://orcid.org/0000-0002-9900-6386>

Ariel Cohen  <https://orcid.org/0000-0002-2550-9773>

Marc-Antoine Benderra  <https://orcid.org/0000-0001-9338-0345>

Emmanuelle Kempf  <https://orcid.org/0000-0002-9285-1966>

## REFERENCES

- Jazieh AR, Akbulut H, Curigliano G, et al. Impact of the COVID-19 pandemic on cancer care: a global collaborative study. *JCO Glob Oncol*. 2020;6:1428-1438. doi:10.1200/go.20.00351
- Kempf E, Lamé G, Layese R, et al. New cancer cases at the time of SARS-Cov2 pandemic and related public health policies: a persistent and concerning decrease long after the end of the national lockdown. *Eur J Cancer*. 2021;150:260-267. doi:10.1016/j.ejca.2021.02.015
- Bosch G, Posso M, Louro J, et al. Impact of the COVID-19 pandemic on breast cancer screening indicators in a Spanish population-based program: a cohort study. *Elife*. 2022;11:e77434. doi:10.7554/eLife.77434
- Mayo M, Potugari B, Bzeih R, Scheidel C, Carrera C, Shellenberger RA. Cancer screening during the COVID-19 pandemic: a systematic review and meta-analysis. *Mayo Clin Proc Innov Qual Outcomes*. 2021;5(6):1109-1117. doi:10.1016/j.mayocpiqo.2021.10.003
- Li T, Nickel B, Ngo P, et al. A systematic review of the impact of the COVID-19 pandemic on breast cancer screening and diagnosis. *The Breast*. 2023;67:78-88. doi:10.1016/j.breast.2023.01.001
- Ng JS, Hamilton DG. Assessing the impact of the COVID-19 pandemic on breast cancer screening and diagnosis rates: a rapid review and meta-analysis. *J Med Screen*. 2022;29(4):209-218. doi:10.1177/09691413221101807
- Gathani T, Dodwell D, Horgan K. The impact of the first 2 years of the COVID-19 pandemic on breast cancer diagnoses: a population-based study in England. *Br J Cancer*. 2023;128(3):481-483. doi:10.1038/s41416-022-02054-4
- Grimm LJ, Lee C, Rosenberg RD, et al. Impact of the COVID-19 pandemic on breast imaging: an analysis of the National Mammography Database. *J Am Coll Radiol*. 2022;19(8):919-934. doi:10.1016/j.jacr.2022.04.008
- Alagoz O, Lowry KP, Kurian AW, et al. Impact of the COVID-19 pandemic on breast cancer mortality in the US: estimates from collaborative simulation modeling. *J Natl Cancer Inst*. 2021;113(11):1484-1494. doi:10.1093/jnci/djab097
- Adachi K, Kimura F, Takahashi H, et al. Delayed diagnosis and prognostic impact of breast cancer during the COVID-19 pandemic. *Clin Breast Cancer*. 2023;23(3):265-271. doi:10.1016/j.clbc.2023.01.001
- Cairns A, Jones VM, Cronin K, et al. Impact of the COVID-19 pandemic on breast cancer screening and operative treatment. *Am Surg*. 2022;88(6):1051-1053. doi:10.1177/00031348221087920
- İlgün AS, Özmen V. The impact of the COVID-19 pandemic on breast cancer patients. *Eur J Breast Heal*. 2022;18(1):85-90. doi:10.4274/ejbh.galenos.2021.2021-11-5
- Yadav PB, Rana D, Bharti D, Dahiya D, Gupta A. Impact of COVID-19 pandemic on breast cancer care: report from a regional cancer Centre. *Lancet Oncol*. 2022;23:S17. doi:10.1016/S1470-2045(22)00416-8
- Resende CAA, Fernandes Cruz HM, Costa e Silva M, et al. Impact of the COVID-19 pandemic on cancer staging: an analysis of patients with breast cancer from a community practice in Brazil. *JCO Glob Oncol*. 2022;8:e2200289. doi:10.1200/GO.22.00289
- Fancellu A, Sanna V, Piredda C, et al. The COVID-19 outbreak may be associated to a reduced level of care for breast cancer. A comparative study with the pre-COVID era in an Italian breast unit. *Eur J Cancer*. 2020;138:S16-S17. doi:10.1016/S0959-8049(20)30562-1
- Daraï E, Mathelin C, Gligorov J. Breast cancer management during the COVID 19 pandemic: French guidelines. *Eur J Breast Health*. 2020;16(3):160-161. doi:10.5152/ejbh.2020.200420
- Gligorov J, Bachelot T, Pierga JY, et al. COVID-19 and people followed for breast cancer: French guidelines for clinical practice of Nice-St Paul de Vence, in collaboration with the Collège Nationale des Gynécologues et Obstétriciens Français (CNGOF), the Société d'Imagerie de la femme (SIFEM), the Société Française de Chirurgie Oncologique (SFÇO), the Société Française de Sénologie et Pathologie Mammaire (SFSPM) and the French Breast Cancer Intergroup-UNICANCER (UCBG). *Bull Cancer*. 2020;107(5):528-537. doi:10.1016/j.bulcan.2020.03.008
- Le Bihan Benjamin C, Simonnet JA, Rocchi M, et al. Monitoring the impact of COVID-19 in France on cancer care: a differentiated impact. *Sci Rep*. 2022;12(1):4207. doi:10.1038/s41598-022-07984-w
- Le Bihan Benjamin C, Rocchi M, Putton M, Méric J, Bousquet PJ. Estimation of oncologic surgery case volume before and after the COVID-19 pandemic in France. *JAMA Netw Open*. 2023;6(1):e2253204. doi:10.1001/jamanetworkopen.2022.53204
- Feron Agbo C, Assogba E, Bertaut A, et al. Impact of Covid-19 on breast cancer stage at discovery, and time to treatment in cote d'Or, France. *Prev Med Rep*. 2023;34:102248. doi:10.1016/j.pmedr.2023.102248
- Linck PA, Garnier C, Depetiteville MP, et al. Impact of the COVID-19 lockdown in France on the diagnosis and staging of breast cancers in a tertiary cancer centre. *Eur Radiol*. 2022;32(3):1644-1651. doi:10.1007/s00330-021-08264-3
- Tran M, Brouard N, Hequet D, Rouzier R, Donval L. Impact of the COVID-19 pandemic on breast cancer management: experience of a French Comprehensive Cancer Center. *Bull Cancer*. 2022;109(12):1236-1244. doi:10.1016/j.bulcan.2022.09.004
- Daniel C, Salamanca E. Hospital databases. AP-HP Clinical Data Warehouse. *Healthcare and Artificial Intelligence*. Springer; 2020:57-67.
- Daniel C, Serre P, Orlova N, Bréant S, Paris N, Griffon N. Initializing a hospital-wide data quality program. The

- AP-HP experience. *Comput Methods Programs Biomed.* 2019;181:104804. doi:10.1016/J.CMPB.2018.10.016
25. Daniel C, Paris N, Pierre O, et al. AP-HP health data space (AHDS) to the test of the Covid-19 pandemic. *Stud Health Technol Inform.* 2022;294:28-32. doi:10.3233/SHTI220390
  26. von Elm E, Altman DG, Egger M, Pocock SJ, Gøtzsche PC, Vandenbroucke JP. Strengthening the reporting of observational studies in epidemiology (STROBE) statement: guidelines for reporting observational studies. *BMJ.* 2007;335(7624):806-808. doi:10.1136/BMJ.39335.541782.AD
  27. Kempf E, Priou S, Lamé G, et al. Impact of two waves of Sars-Cov2 outbreak on the number, clinical presentation, care trajectories and survival of patients newly referred for a colorectal cancer: a French multicentric cohort study from a large group of university hospitals. *Int J Cancer.* 2022;150:1-10. doi:10.1002/ijc.33928
  28. Brierley JD, Greene FL, Sobin LH, Wittekind C. The “y” symbol: an important classification tool for neoadjuvant cancer treatment. *Cancer.* 2006;106(11):2526-2527. doi:10.1002/cncr.21887
  29. Ramanakumar AV, Annie B, Frederic L, Christine B, Cathy R, Jean L. Evaluating the impact of COVID-19 on cancer declarations in Quebec. *Cana.* 2023;12:6260-6269. doi:10.1002/cam4.5389
  30. Mentrasti G, Cantini L, Vici P, et al. Rising incidence of late stage breast cancer after COVID-19 outbreak. Real-world data from the Italian COVID-DELAY study. *Breast.* 2022;65:164-171. doi:10.1016/j.breast.2022.08.007
  31. Communiqué de presse INCa. Organisation de la reprise des traitements et des dépistages des cancers: assurer la qualité et la sécurité des parcours de soins pour les patients en tenant compte des situations territoriales. 2020.
  32. Centre de coordination Ile de France–Dépistage des Cancers. Inviter, dépister, informer La stratégie du CRCDC-IDF pour le dépistage des cancers en pleine épidémie de Covid 19. 2021 <https://www.oncorif.fr/inviter-depister-informer-la-strategie-du-crcdc-idf-pour-le-depistage-des-cancers-en-pleine-epidemie-de-covid-19/>
  33. Ceugnart L, Delalogue S, Balleyguier C, et al. Breast cancer screening and diagnosis at the end of the COVID-19 confinement period, practical aspects and prioritization rules: recommendations of 6 French health professionals societies. *Bull Cancer.* 2020;107(6):623-628. doi:10.1016/j.bulcan.2020.04.006
  34. Garrido-Cantero G, Longo F, Hernández-González J, et al. Impact of the COVID-19 pandemic on cancer diagnosis in Madrid (Spain) based on the RTMAD tumor registry (2019-2021). *Cancers (Basel).* 2023;15(6):1753.
  35. Doan C, Li S, Goodwin JS. Breast and lung cancer screening among Medicare enrollees during the COVID-19 pandemic. *JAMA Netw Open.* 2023;6(2):e2255589. doi:10.1001/jamanetworkopen.2022.55589
  36. Richman I, Tessier-Sherman B, Galusha D, Oladele CR, Wang K. Breast cancer screening during the COVID-19 pandemic: moving from disparities to health equity. *J Natl Cancer Inst.* 2023;115(2):139-145. doi:10.1093/jnci/djac172
  37. Losurdo A, Lisa AVE, Tomatis M, et al. Highly specialized breast centers did not experience delay of care during COVID-19 pandemic in Italy: the Senonetwork experience. *Breast Cancer Res Treat.* 2022;196(1):87-95. doi:10.1007/s10549-022-06694-1
  38. Estupiñán-Romero F, González-Galindo J, Martínez-Lizaga N, et al. Was there any delay in the treatment of breast cancer patients because of the COVID-19 stringency measures? *Eur J Public Health.* 2022;32(Suppl 3):ckac129.274. doi:10.1093/eurpub/ckac129.274
  39. Hawrot K, Shulman LN, Bleiweiss IJ, et al. Time to treatment initiation for breast cancer during the 2020 COVID-19 pandemic. *JCO Oncol Pract.* 2021;17(9):534-540. doi:10.1200/OP.20.00807
  40. Papautsky EL, Hamlsh T. Patient-reported treatment delays in breast cancer care during the COVID-19 pandemic. *Breast Cancer Res Treat.* 2020;184(1):249-254. doi:10.1007/s10549-020-05828-7
  41. Vanni G, Tazzioli G, Pellicciaro M, et al. Delay in breast cancer treatments during the first COVID-19 lockdown. A multicentric analysis of 432 patients. *Anticancer Res.* 2020;40(12):7119-7125. doi:10.21873/anticancer.14741
  42. He S, Wang Y, Zhao X, et al. Factors influencing delayed treatment in patients with breast cancer during COVID-19 pandemic. *Front Public Health.* 2022;10:808873. doi:10.3389/fpubh.2022.808873
  43. Abd El Wahab MH, Ibrahim AH, Gado O, et al. Changes in breast cancer staging trends among Egyptian women after COVID-19: A retrospective single-center study. *Int J Immunopathol Pharmacol.* 2023;37:3946320231152835. doi:10.1177/03946320231152835
  44. Prodhon AHMSU, Islam DZ, Khandker SS, et al. Breast cancer management in the era of Covid-19; key issues, contemporary strategies, and future implications. *Breast Cancer (Dove Med Press).* 2023;15:51-89.
  45. Borsky K, Shah K, Cunnick G, Tsang-Wright F. Pattern of breast cancer presentation during the coronavirus disease pandemic: results from a cohort study in the UK. *Future Oncol.* 2022;18(4):437-443. doi:10.2217/fon-2021-0970
  46. Vanni G, Pellicciaro M, Materazzo M, et al. Advanced stages and increased need for adjuvant treatments in breast cancer patients: the effect of the one-year COVID-19 pandemic. *Anticancer Res.* 2021;41(5):2689-2696. doi:10.21873/anticancer.15050
  47. Berrian J, Liu Y, Ezenwajaku N, et al. Impact of the COVID-19 pandemic on breast, colorectal, lung, and prostate cancer stage at diagnosis according to race. *Cancer Med.* 2023;12:7381-7388. doi:10.1002/cam4.5439
  48. Hui NJ, Hoong SM, Min TJ, et al. Impact of COVID-19 on breast cancer management in a multiethnic middle-income Asian country setting. *Eur J Breast Health.* 2023;19(2):177-183. doi:10.4274/ejbh.galenos.2023.2022-12-6
  49. Simão D, Sardinha M, Reis AF, Spencer AS, Luz R. What has changed during the COVID-19 pandemic?-The effect on an Academic Breast Department in Portugal. *Eur J Breast Health.* 2022;18(1):74-78. doi:10.4274/ejbh.galenos.2021.2021-11-1
  50. Rubenstein RN, Stern CS, Ba ELP, Matros E, Nelson MJA. Effects of COVID-19 on mastectomy and breast reconstruction rates: a national surgical sample. *J Surg Oncol.* 2022;126:205-213. doi:10.1002/jso.26889
  51. Boyd CJ, Hemal K, Ramesh S, et al. Breast reconstruction during the COVID-19 pandemic: single institution experience from the pandemic's epicenter in the United States. *J Plast Reconstr Aesthet Surg.* 2022;75(7):2236-2241.
  52. Joseph WJ, Bustos SS, Losee JE, Rubin JP, DE LA Cruz C. The impact of the COVID-19 pandemic on breast reconstruction practices in the United States. *Anticancer Res.* 2021;41(4):1903-1908. doi:10.21873/anticancer.14956

53. Isaac KV, Buchel EW, Brackstone MM, Doherty C, Lipa JE, Zhong T, Semple JL, Brown MH, Snell L, Mahoney MH, Vorstenbosch J, Wheelock M, Macadam SA, Coroneos CJ, Tremblay-Champagne MP, Voineskos SH, Zhang J, Somogyi R, Temple-Oberle C, Ross D Canadian expert opinion on breast reconstruction access: strategies to optimize care during COVID-19. *Plast Reconstr Surg Glob Open* 2022;10(2):e4204. [https://journals.lww.com/prsgo/Fulltext/2022/02000/Canadian\\_Expert\\_Opinion\\_on\\_Breast\\_Reconstruction.71.aspx](https://journals.lww.com/prsgo/Fulltext/2022/02000/Canadian_Expert_Opinion_on_Breast_Reconstruction.71.aspx)
54. Cai S, Zuo W, Lu X, Gou Z, Zhou Y, Liu P. The prognostic impact of age at diagnosis upon breast cancer of different immunohistochemical subtypes: a Surveillance, Epidemiology, and End Results (SEER) population-based analysis. 2020;10:1729. doi:10.3389/fonc.2020.01729
55. Benderra MA, Aparicio A, Leblanc J, et al. Clinical characteristics, care trajectories and mortality rate of SARS-CoV-2 infected cancer patients: a multicenter cohort study. *Cancers*. 2021;13(19):4749. doi:10.3390/CANCERS13194749
56. Schott AM, Hajri T, Colin C, et al. Intérêt de l'utilisation du PMSI pour l'analyse d'activité cancérologique d'une structure de soins multidisciplinaire: l'expérience de la coordination de

cancérologie des Hospices Civils de Lyon [Usefulness of the French DRG based information system (PMSI) in the measurement of cancer activity in a multidisciplinary hospital: the Hospices Civils de Lyon]. *Bull Cancer*. 2002;89(11):969-973.

## SUPPORTING INFORMATION

Additional supporting information can be found online in the Supporting Information section at the end of this article.

**How to cite this article:** Guével E, Priou S, Lamé G, et al. Impact of the COVID-19 pandemic on clinical presentation, treatments, and outcomes of new breast cancer patients: A retrospective multicenter cohort study. *Cancer Med*. 2023;00:1-12. doi:10.1002/cam4.6637